

PROLOGA



***SAP S/4HANA for waste and recycling,
environmental services add-on by
PROLOGA
Material Flow Management - Config
Guide***

SAP® Certified
Powered by SAP NetWeaver®

No part of this publication may be reproduced or transmitted in any form or for any purpose without the express permission of PROLOGA GmbH. The information contained herein may be changed without prior notice.

Some software products marketed by PROLOGA GmbH and its distributors contain proprietary software components of other software vendors.

SAP and other SAP products and services mentioned herein as well as their respective logos are trademarks or registered trademarks of SAP SE in Germany and in several other countries all over the world. All other product and service names mentioned and associated logos displayed are the trademarks of their respective companies. Data contained in this document serves informational purposes only. National product specifications may vary.

The information in this document is proprietary to PROLOGA. No part of this document may be reproduced, copied, or transmitted in any form or for any purpose without the express prior written permission of PROLOGA GmbH. This document is a preliminary version and not subject to your license agreement or any other agreement with PROLOGA. This document contains only intended strategies, developments, and functionalities of the SAP® product and is not intended to be binding upon SAP SE and/or PROLOGA GmbH to any particular course of business, product strategy, and/or development. Please note that this document is subject to change and may be changed by PROLOGA at any time without notice. PROLOGA assumes no responsibility for errors or omissions in this document. PROLOGA does not warrant the accuracy or completeness of the information, text, graphics, links, or other items contained within this material. This document is provided without a warranty of any kind, either express or implied, including but not limited to the implied warranties of merchantability, fitness for a particular purpose, or non-infringement.

PROLOGA shall have no liability for damages of any kind including without limitation direct, special, indirect, or consequential damages that may result from the use of these materials. This limitation shall not apply in cases of intent or gross negligence.

The statutory liability for personal injury and defective products is not affected. PROLOGA has no control over the information that you may access through the use of hot links contained in these materials and does not endorse your use of third-party Web pages nor provide any warranty whatsoever relating to third-party Web pages.

©Copyright 2021 PROLOGA GmbH. All rights reserved.

Relevance



This documentation is relevant for:

- SAP S/4HANA for waste and recycling, environmental services add-on by PROLOGA
- Cloud SAP S/4HANA for waste and recycling, environmental services add-on by PROLOGA
- SAP S/4HANA Cloud for waste and recycling, private edition, environmental services add-on by PROLOGA

Whenever SAP S/4HANA for waste and recycling, environmental services add-on by PROLOGA is referred to in the following, the mentioned products above are always meant as well. To ensure a better overview when reading the document, SAP S/4HANA for waste and recycling, environmental services add-on by PROLOGA is used as a reference of all products.

Document History



Before you start the implementation, make sure you have the latest version of this document. You can find the latest version at the following location: [SAP S/4HANA for waste and recycling, environmental services add-on by PROLOGA](#)

The following table provides an overview of the most important document changes.

Version	Important Changes
1	Initial version
3	Chapter 10: Data Archiving and Data Aging

Table 1: Most important document changes

Table of Content

1 Introduction 5

1.1 Country Specific Templates and Basis Framework 5

2 Configuration 6

2.1 Pre-requisites 6

2.2 Importing the License Key 6

2.2.1 Request the License Key 6

2.2.2 Register the License Key 6

2.2.2.1 Registering the License Key to use the application 6

2.3 Activation of necessary BAdI-Implementations 7

2.4 Creating the Number Range for the application *Material Flow Management* 8

2.5 Activation of the *Material Flow Management* functions in transaction (/WATP/BASE_OBJCONFIG) 9

2.5.1 Implementation of Country Templates (/WATP/BASE_OBJCONFIG) 11

2.5.1.1 Implementations of Austrian Template 11

2.5.1.2 Implementations of Australia Template 13

2.5.1.3 Implementations of Belgian Template 15

2.5.1.4 Implementations of German Template 17

2.5.1.4.1 Implementations to Activate and Deactivate the New and Old UI 19

2.5.1.4.2 Screenshots: View of UI (Old/New) 21

2.5.1.5	Implementations of Dutch Template	24
2.5.1.6	Implementations of Norwegian Template	27
2.5.1.7	Implementations Transnational	29
2.5.2	Global Implementations (/WATP/BASE_OBJCONFIG)	29
2.5.2.1	Configuration	29
2.5.2.2	Implementation Disposal Documents	33
2.5.2.3	Implementations of Notification Template	34
2.5.2.4	Implementations of Declaration Analysis Template	35
2.5.2.5	Implementations of General Waste Streams Templates	35
2.5.2.6	Available Templates of Print Forms	36
3	Implementations to combine with the application Operational Planning	41
4	Basic Configuration in Transaction (/WATP/ARB_CONFIG).....	42
4.1	General Settings of Material Flow Management (ARB Configuration).....	42
4.1.1	Multi-country compatible	42
4.1.2	Unit – Internal Unit.....	42
4.1.3	Waste code – manual code entry	42
4.1.4	Waste Approval/Waste Stream	43
4.1.5	Target quantity	43
4.1.6	Small quantity regulation for Single German Waste Stream Templates	43
Quant	43	
4.1.7	Document management	43
4.1.8	Waste approval management.....	44
4.1.9	NGS/ Indicator	44
4.1.10	Automatic cancellation	45
4.1.11	Selection of date for transfer.....	45
4.1.12	ADR-regulations	45
4.1.13	EWC-Collective categories	45
4.1.14	Federal State Codes.....	45
4.1.15	Material Risk Level.....	46
4.1.16	Monitoring Level for Waste Stream Templates	46
4.1.17	Partner Types.....	46
4.1.18	Treatment procedures	47
4.1.19	Types of transport	49
4.1.20	Waste disposal procedure	49
4.2	Document management	49
4.2.1	Disposal Document Type	49
4.3	Settings for the Austrian Template – Knot Legal Requirements (Austria)	51
4.3.1	Link-end-type indicator	51
4.3.2	Quantification method	51
4.3.3	Specifications of the AT Norm Catalog	51
4.3.3.1	General	51
4.3.3.2	Material assignment.....	52
4.3.3.3	EWC catalog assignment	52
4.3.4	Waste movement types	52
4.4	Settings of the Belgian Template - Knot Legal Requirements (Belgium)	53
4.4.1	Pre-treatments for waste	53
4.4.2	Note types.....	53
4.5	Settings for Dutch Template - Knot Legal Requirements (Netherlands)	53
4.5.1	EWC Entries in the special regulation procedure	53
4.6	Material Inspection	53
4.6.1	General Settings.....	53
4.6.2	Clarification case categories with deviation	54
4.6.3	Dynamic Calculation	54
4.6.4	Strategic Calculating Methods	55
4.7	Material Flows	55
4.7.1	General Settings.....	55
4.7.2	Declaration analysis parameter	55
4.7.3	Waste Stream Types (Material Flows).....	56
4.8	Material Output Steering	57
4.8.1	Accepted Contract Types	57
4.8.2	General Settings.....	57
4.9	Notification	58

4.9.1	H-Code.....	58
4.9.2	Packaging Types.....	58
4.9.3	Physical properties.....	58
5	Configuration for the use of Material Flow Management in combination with SD-Contracts.....	59
6	Enhancement of the Material for Material Inspection and Output Steering.....	63
6.1	Object Navigator	63
6.2	Create Screen sequence	63
6.2.1	Creation of 4 tabs for the enhancement.....	64
6.3	Assignment of a Screen Sequence to a Material Type	66
7	Configuration for usage of Material Inspection.....	68
7.1	Activation of Modules for Material Inspection in Transaction /WATP/BASE_OBJCONFIG.....	68
7.2	Implementation in /WATP/BASE_OBJCONFIG	69
7.3	Material Risk	71
8	Configuration for usage of Output Steering	73
8.1	Activate Output Steering Modules in Transaction /WATP/BASE_OBJCONFIG	73
8.2	Implementation in /WATP/BASE_OBJCONFIG	73
9	Enhancement Multiple Item Weighing	77
9.1	Implementations Multiple Item Weighing	77
9.2	BAdI's Multiple Item Weighing.....	78
10	Data Archiving and Data Aging	79
10.1	Retention Period for Archiving Objects.....	81

Table of Figures

Figure 1:	Entering the license key to use the component.....	6
Figure 2:	Successful registration of the license key to use the component	7
Figure 3:	Implementation of Material Flow Management Parameters in Transaction /WATP/BASE_OBJCONFIG	9
Figure 4:	Search function for implementations	11
Figure 5:	ARB_DE_NW_OLD_UI activated.....	21
Figure 6:	Displayed tabs in the old UI	21
Figure 7:	ARB_DE_NW_NEW_UI activated	22
Figure 8:	Displayed tabs in the new UI.....	22
Figure 9:	Tab VE1 in the old UI	23
Figure 10:	Tab VE1 in the new UI	24
Figure 11:	Assignment of Print Form Templates to Implementations	37
Figure 12:	Material Flow Management Configuration in Transaction /WATP/ARB_CONFIG	42
Figure 13:	Setting for Collective Waste Approval/Waste Stream	57
Figure 14:	Define short description of the project	59
Figure 15:	Assignment of an enhancement	59
Figure 16:	Enhancement from function exit	60
Figure 17:	Example expression of an Include	60
Figure 18:	Activate the project.....	61
Figure 19:	Transaction: /WATP/CS_CUST01.....	61
Figure 20:	BAdI Material enhancement.....	63
Figure 21:	Basis for copy screen sequence 99	64
Figure 22:	Register for material enhancement.....	65
Figure 23:	Screen sequence sub screen.....	66
Figure 24:	Screen Sequence – Screen Reference	66
Figure 25:	Screen Sequence – Screen Reference – Material Type	67
Figure 26:	Material Inspection in Object Configuration	68
Figure 27:	Material Risk Level in Object Configuration Tree.....	71
Figure 28:	Output Steering in Object Configuration.....	73
Figure 29:	Material Enhancement for Output Steering	76
Figure 30:	Retention period overview with BC set	81
Figure 31:	Country-specific retention period	82

Table of Tables

Table 1: Most important document changes.....	1
Table 2: Using Implementation types.....	10
Table 3: Material Flow Management Austria.....	12
Table 4: Implementations Austria.....	13
Table 5: Material Flow Management Australia.....	14
Table 6: Implementations Australia.....	15
Table 7: Material Flow Management Belgium.....	15
Table 8: Implementations Belgium.....	16
Table 9: Material Flow Management Germany.....	17
Table 10 Implementations Germany.....	19
Table 11 Sets to activate the old or new UI.....	20
Table 12 Plugins to hide/disable tabs in new and old UI.....	21
Table 13 Material Flow Management Netherlands.....	25
Table 14: Implementations of the Netherlands.....	26
Table 15: Netherlands EBA.....	27
Table 16: Material Flow Management Norway.....	28
Table 17: Implementation Norway.....	28
Table 18: Implementations transnational.....	29
Table 19: Implementations for /WATP/ARB_CONFIG.....	30
Table 20: Global Implementations.....	33
Table 21: Implementation Disposal Documents.....	34
Table 22: Implementations Notification Template.....	35
Table 23: Implementation Declaration Analysis Template.....	35
Table 24: Implementation of General Waste Stream Templates.....	36
Table 25: Overview Print forms.....	40
Table 26: Implementation SAP® Dispatching & Planning by PROLOGA.....	41
Table 27: Partner Types.....	47
Table 28: Disposal Document Type.....	50
Table 29: Waste Pre-Treatment for Belgian Template.....	53
Table 30: Note Type Belgium.....	53
Table 31: Waste Approval/Waste Stream Types.....	56
Table 32: Function exits for SD-contracts.....	60
Table 33: Structure of the screen sequence.....	64
Table 34: Screen sequence tabs.....	65
Table 35: Implementations of Material Inspection.....	71
Table 36: Implementations of Material Risk Level.....	72
Table 37: Implementations of Output Steering.....	75
Table 38: Implementations for Multiple Item Weighing.....	77
Table 39: Implementation Set for Multiple Item Weighing.....	78
Table 40: Enhancement Implementations for Multiple Item Weighing.....	78
Table 39: Archiving objects and their corresponding tables.....	80
Table 40: Reports for the archiving objects.....	80
Table 41: Archiving objects with extended tables.....	81

Glossary



Attention



Note

1 Introduction

The application *Material Flow Management* contains the basic framework to enable your company to integrate processes according to the environmental legislation. This can be applied for different countries in the system in order to map the documentation of waste stream relevant disposal services.

The solution allows the maintenance of necessary master data such as catalogs (EWC in Europe) and the use in corresponding movement data (legal transport documents) during the collection processes. It is fully integrated into the SAP® S/4HANA for Utilities business solution which provides all standard data required for monitoring material flows such as waste generation sites, waste disposer sites, materials and quantities.

This document describes the necessary steps after a successful installation of the add-on to use the application *Material Flow Management* in its standard version.

1.1 Country Specific Templates and Basis Framework

The application *Material Flow Management* already contains country specific templates and basic functionality for several European countries which can be used according to the basic framework or customer specifically enhanced. In addition they can be reused in order to create new country templates. These templates are available for material flows/waste stream, the related disposal documents/consignment notes.



The solution provides a Legal Requirement Foundation and will not be extended continuously according to the country specific requirements.

2 Configuration

2.1 Pre-requisites

Pre-requisite for the implementation of the configuration is the successful and proper installation of the add-on *SAP S/4HANA for waste and recycling, environmental services add-on by PROLOGA*

2.2 Importing the License Key

To use the application *Material Flow Management*, you need a license key.

2.2.1 Request the License Key

If you do not have a license key, please use SAP note 2514597 (<https://support.sap.com/en/index.html>) which describes how to obtain a license key.

2.2.2 Register the License Key

Before you start registering the license key, please check whether the installation number submitted with the license key agrees with the installation number of your SAP® system.



License keys are always coupled with the installation number of the SAP® system. Therefore they cannot be used in other SAP® systems.

2.2.2.1 Registering the License Key to use the application

Log on to the SAP® system with your user name and password.

Start transaction */WATP/BASE_KEYREG*. If you do not have permission to start this transaction, please contact your system administrator.

Select the component *ARB* in the list and press the register button (*Ctrl + Shift + F8*).

Enter the license key in the dialog that opens and if you have purchased a time-limited license, the *Expiring date* as well.

Field	Value
Component	ARB
Description	Material Flow Management
Code	
Expiring date	

Figure 1: Entering the license key to use the component

Confirm the entry.

You recognize the successful completion of registration with help of the green icon in the status column (see Figure 2: Successful registration of the license key to use the component).

Status	Obj. ty...	Technical Name	Component	Object type	Expiring Date	Reg. Date	Max ...	User Name	Allow...
○○	☒	ARB	ARB	BASE_OBJMOD		14.05.2017	2.0	ALULEICH	X
○○	☒	BC	BC	BASE_OBJMOD		14.05.2017	3.0	ALULEICH	X
○○	☒	MOB	MOB	BASE_OBJMOD		14.05.2017	1.0	ALULEICH	X
○○	☒	PORTAL_EEWA	PORTAL_EEWA	BASE_OBJMOD		14.05.2017	1.0	ALULEICH	X
○○	☒	SM	SM	BASE_OBJMOD		14.05.2017	1.0	ALULEICH	X
○○	☒	TP	TP	BASE_OBJMOD		14.05.2017		ALULEICH	X
○○	☒	TP_DISTRICT	TP_DISTRICT	BASE_OBJMOD		14.05.2017		ALULEICH	X
○○	☒	WAMM	WAMM	BASE_OBJMOD		14.05.2017		ALULEICH	X
○○	☒	CONTSERVICE	CONTSERVICE	BASE_IMPLGRP		14.05.2017	1.1	ALULEICH	X
○○	☒	CONTSERVICE_UBE	CONTSERVICE	BASE_IMPLGRP		14.05.2017	1.1	ALULEICH	X
○○	☒	MOB_MOMA	MOB	BASE_IMPLGRP		14.05.2017	2.0	ALULEICH	X
○○	☒	TPOPTIMIZER	TP	BASE_IMPLGRP		14.05.2017		ALULEICH	X
○○	☒	TP_DISTRICT	TP_DISTRICT	BASE_ADM_ARCH...		14.05.2017		ALULEICH	X
○○	☒	MOB_READER_COUNT	MOB	BASE_ACCLMT					
○○	☒	BC_VEHICLE_COUNT	BC	BASE_ACCLMT					
○○	☒	POEW_ACTION_COUNT	PORTAL_EEWA	BASE_ACCLMT					

Figure 2: Successful registration of the license key to use the component



If you receive an error message while registering, please check the following details:

- Does the SAP installation number specified in the application form comply with the installation number of the system?
- Does the add-on version specified in the application form comply with the version installed in the system?
- Have you selected the correct component?
- For a temporary key: Was the correct expiration date entered?

2.3 Activation of necessary BAdI-Implementations

To use the application *Material Flow Management* it is required to activate several BAdI implementations.

To activate an implementation use the transaction *SE19* and select the area, "edit implementation", "classic BAdI".

The following implementations have to be activated:

BAdI	Implementation
ISU_WA_HAZARD_WASTE	ISU_WA_HAZARD_WASTE
EEWAWA_BA_WEIGHPROC	/WATP/BA_WEIGHPROC
EEWA_BA_WDORDER	/WATP/BA_WDORDER
EEWA_BA_WDORDERITEM	/WATP/ARB_BA_WDOITEM
EEWA_BA_WDORDERWEIGH	/WATP/ARB_BA_WOWEIGH
EEWA_BD_WA_MULTWEIGHPROCFAST	/WATP/ARBHAZARDWASTE_MWEIGHT

Activate the implementation of ARB (*/WATP/ARBHAZARDWASTE*) in the BAdI *ISU_WA_HAZARD_WASTE*. This implementation enables the screen enhancements for the waste disposal facilities (transaction *EWAELO4*) for the business partner and EWC-code assignment,

2.4 Creating the Number Range for the application *Material Flow Management*

After the license key has been activated, the required number range intervals will be created for the application.

The number ranges for the component are created in the transaction (*/WATP/BASE_OBJCONFIG*).

The number ranges to be activated for the waste legislation are given in the tree on the path:
Material Flow Management → *Implementations* → *Material Flow Management (ARB)*.

Select the following implementations and execute the function *Creating Number Ranges* in the menu *Extras*:

- *Number Ranges (General) (ARB_SNRO)*
- *Number Ranges (Notes) (ARB_NOTES_SNRO)*
- *Number Ranges (Waste Stream management/waste stream management) (ARB_NW_SNRO)*

According to this there are several more country-specific number ranges required according to the existing country templates. These are described in section *2.5.1 Country-Specific Implementations*.

2.5 Activation of the Material Flow Management functions in transaction (/WATP/BASE_OBJCONFIG)

In order to use the application *Material Flow Management* certain implementations have to be activated in transaction /WATP/BASE_OBJCONFIG.

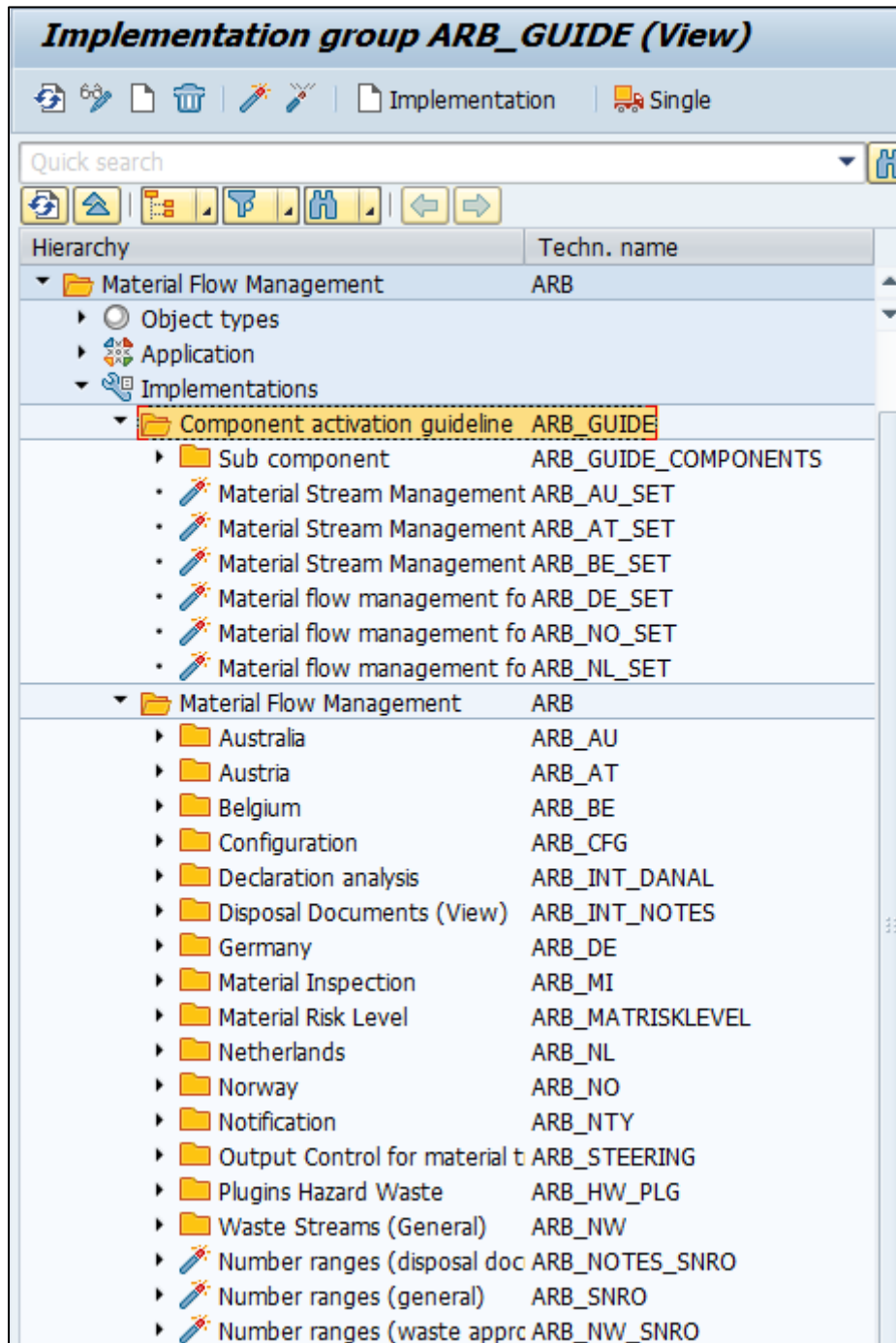


Figure 3: Implementation of Material Flow Management Parameters in Transaction /WATP/BASE_OBJCONFIG

Whether a feature is enabled, you can see at the precede symbol in the tree:



Function is activated



Function is deactivated

To activate a non-activated functionality, select the function in the tree and press the button *Activate*



The implementations are located in the tree on the path:

Material Flow Management → *Implementations* → *Material Flow Management (ARB)*.

The structuring of the Plugins to be activated occurs in sets.

The activation has to be done for each country template.

There are different types of using the implementations:

Using type	Implementation	Description
	Direct Using (activate and deactivate)	
R	Has to be activated	This implementation always has to be active.
A	Gets activated too.	The activation of a set activates this plugin too. Deactivating a set does not affect this plugin. Such plugins contain functionality that is the universally valid.
O	Additional option (does not get activated or deactivated)	Here an enhancement can be made, e.g. material inspection (possible for every country template). Please look for the suitable Plugin by the help of the "search function" and activate it separately.
N	May not be activated	
D	Activation leads to deactivation.	

Table 2: Using Implementation types

The implementation sets of the country templates consist of generally valid configurations/sets.

In the following, the country sets will be presented and afterwards a list of generally valid sets is displayed (global implementation)

Global implementations are affecting on all activated country templates.

Country specific implementations are affecting only on the related country template.

In the tables below an overview of the available implementations is given. In the column *Function* a brief description of the function that is activated by the implementation is given. In some points it is spoken of a "general basic functionality". These implementations are the pre-requisites for the activation of other implementations or activate general base functions. Please enable all "general implementations" that do not explicitly refer to other implementations, for which they are a pre-requisite. In the column *Node in the tree* the implementation group (technical name) is specified, in which the corresponding implementations are located. If it is not specified, the implementation is in the implementation group ARB = Material Flow Management parameters (see path above).



It is possible to activate all implementations of an implementation group together. Select the implementation group and confirm with



2.5.1 Implementation of Country Templates (/WATP/BASE_OBJCONFIG)



Always activate the implementation *ARB_DE_NW_SCR_INT* in the node *ARB_DE* → *IMPGRP_ARB_DE_NW*, if you use the Waste Stream administration.

1. Activate the Material Flow Management for X- the specific country. (*Material Flow Management* → *Implementations* → *Component activation guideline*)
2. Activate the ARB mask at the service frequency. (*Material Flow Management* → *Implementations* → *Material Flow Management* → *Plugins Hazard Waste* → *Service frequency* (for transaction *ELOC*))



Pay attention, here only one mask is allowed to be active.

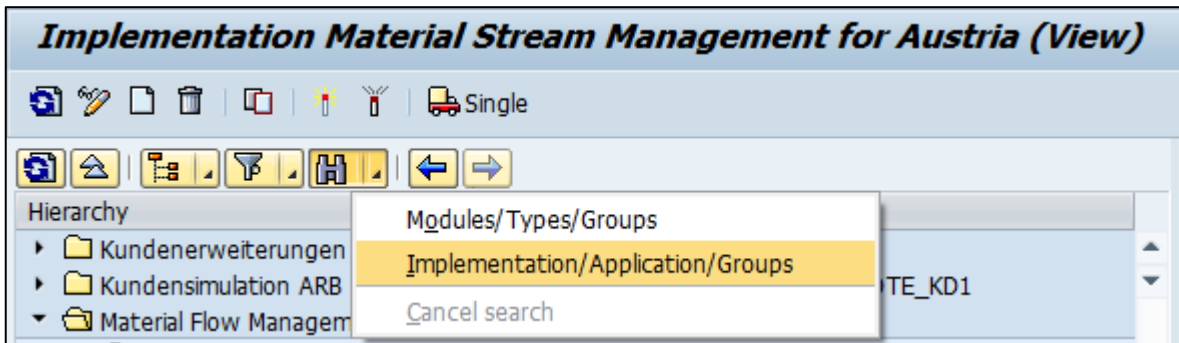


Figure 4: Search function for implementations

The sets of the country templates you will find under *Material Flow Management* → *Implementations* → *Component activation guideline*.

2.5.1.1 Implementations of Austrian Template

1. Please switch on the set: *ARB_AT_SET*. (*Material Flow Management* → *Implementations* → *Component activation guideline*)
2. Please switch on the set of service frequency for Austria: *ARB_HW_SR_AT_NEW* – mask for Austria (new) (*Material Flow Management* → *Implementations* → *Material Flow Management* → *Plugins Hazard Waste*)
3. Optionally you can switch on the material inspection *ARB_AT_MI_SET* and the automatic creation of disposal documents at waste disposal order creation *ARB_AT_AUTOGEN_SET*. (*Material Flow Management* → *Implementations* → *Material Flow Management* → *Austria* → *Component Collection*)

The set *ARB_AT_SET* includes the following Plugins / Sets:

Implementation	Using type	Function	Node in tree (technical name)	Name of Implementation in tree
<i>ARB_AT_AUTOGEN_SET</i>	0			Create notes (and approvals)

SAP S/4HANA for waste and recycling, environmental services add-on by PROLOGA - Material Flow Management - Config Guide

				automatically while order creation
ARB_AT_BASE_SET				Basic components for the Austrian Template
ARB_AT_CFG_SET				Settings specifically for the Austrian Template
ARB_AT_MI_SET	O			Integrate material inspection
ARB_CFG_SET	A			Material flow management configuration
ARB_NOTES_SET	A			Document management
ARB_NW_SET	A			Material flow management
ARB_OPTIONS				Optional Components

Table 3: Material Flow Management Austria

Other plugins can be found at: *Material Flow Management* → *Implementations* → *Material Flow Management* → *Austria*: (The plugins are partially activated due to the activation of Material Flow Management for the sets of the Austrian Template).

Implementation	Function	Node in tree (technical name)	Name of implementation in tree
ARB_NOTE_PLG_EWAO_AT	General basic functionality. Activate this implementation, if you use the Austrian Template.	ARB_AT_PLG_EEWA	Plugin for order items (Austria)
ARB_AT_PLG_AUTO_NOTE	Additionally switch on: ARB_HW_PLG_ORDOBJECT In transaction ELOC → Service frequency under the tab "Waste data", you find "Disp. doc.". If you choose "no disposal document" and you have a hazardous waste, a disposal document will be created nevertheless.	ARB_AT_PLG	Creating a waste disposal order for hazardous waste leads to the creation of a disposal document
ARB_AT_PLG_BO_ORDER	If a disposal order gets planned (e.g. /WATP / TP_SHORTTERM - a disposal order is distributed on another vehicle) - an update is made to the relevant carrier.	ARB_AT_PLG	Update note data if disposal order is disposed
ARB_AT_PLG_ORDERPOS	If a disposal order item gets planned (e.g. /WATP / TP_SHORTTERM - a disposal order item is distributed on another vehicle) - an update is made to the relevant carrier.	ARB_AT_PLG	Update note data while saving disposal order
ARB_AT_NOTES2012_EXT	Can be switched on. In the /WATP/ARB_NOTES an additional rider (additional data) is visible, for	ARB_AT → IMPGRP_ARB_AT_NOTES	Register additional data on mask disposal document (ANV 2012)

	example the actual material.		
<i>ARB_AT_NOTES2012_MSK</i>	A consignment note created for ANV2012 will be visible in the <i>/WATP/ARB_NOTES</i> as a disposal document (2012).	<i>ARB_AT</i> → <i>IMPGRP_ARB_AT_NOTES</i>	Register mask disposal document (ANV 2012) in <i>N/WATP/ARB_NOTES</i>
<i>ARB_AT_NOTES_PRINT</i>	Activates the integration of the print forms of disposal documents for the Austrian Template. Activate this implementation, if you want to print consignment documents in the document administration <i>/WATP/ARB_NOTES</i> for Austria.	<i>ARB_AT</i> → <i>IMPGRP_ARB_AT_NOTES</i>	Print forms (Notes)
<i>ARB_AT_NOTES_SCR_INT</i>	Activates the input screens for Austrian consignment documents in the notes & document management (<i>/WATP/ARB_NOTES</i>). Activate this implementation, if you use the Austrian Template.	<i>ARB_AT</i> → <i>IMPGRP_ARB_AT_NOTES</i>	Subscreens (Transnational)
<i>ARB_HW_SR_AT_NEW</i>	Activates the country-specific data fields required for the Austrian Template in order to register the waste data at the service frequency (<i>ELOC</i>). Activate this implementation, if you use the Austrian Template.	<i>ARB_HW_PLG</i> → <i>ARB_HW_SR</i>	Hazard waste implementation at the service frequency (Austria)
<i>ARB_MI_EXT_NW_AT</i>	A tab for Material Inspection should be visible in the Material Flow (<i>/WATP/ARB_NW</i>)	<i>ARB_AT</i> → <i>IMPGRP_ARB_AT_NW</i>	Integration Material Inspection in Material Flow Austria
<i>ARB_NW_AT_MASK</i>	Mask for Austrian Material Flow template becomes visible (<i>/WATP/ARB_NW</i>)	<i>ARB_AT</i> → <i>IMPGRP_ARB_AT_NW</i>	Registration Mask for Austrian Material Flow template in <i>/WATP/ARB_NW</i>

Table 4: Implementations Austria

2.5.1.2 Implementations of Australia Template

1. Please switch on the set: *ARB_AU_SET*. (*Material Flow Management* → *Implementations* → *Component activation guideline*)
2. Please switch on the set of service frequency for Australia: *ARB_HW_SR_AU* – mask for Australia (*Material Flow Management* → *Implementations* → *Material Flow Management* → *Plugins Hazard Waste*)
3. Optionally you can switch on the material inspection (*ARB_AU_MI_SET*). (*Material Flow Management* → *Implementations* → *Material Flow Management* → *Australia* → *Component Collection*)

The set *ARB_AU_SET* includes the following Plugins / Sets:

Implementation	Function	Node in tree (technical name)	Name of implementation in tree	Implementation
<i>ARB_AU_BASE_SET</i>				Basic components for the Australia Template
<i>ARB_AU_CFG_SET</i>				Settings specifically for the Australia Template
<i>ARB_AU_MI_SET</i>	O			Integrate material inspection
<i>ARB_AU_NOTE_OPTIONS</i>				Options for Australian disposal documents
<i>ARB_CFG_SET</i>	A			Material flow management configuration
<i>ARB_DECLANS_SET</i>	A			Declaration analysis
<i>ARB_INT_NW_SCR_DECL</i>	A			Subscreens (declaration analysis)
<i>ARB_INT_NW_SCR_NOTE</i>	A			Subscreens (documents)
<i>ARB_NOTES_SET</i>	A			Document management
<i>ARB_NW_SET</i>	A			Material flow management
<i>ARB_OPTIONS</i>				Optional Components

Table 5: Material Flow Management Australia

Other plugins can be found at: *Material Flow Management* → *Implementations* → *Material Flow Management* → *Australia*: (The plugins are partially activated due to the activation of Material Flow Management for the Australian sets.)

Implementation	Function	Node in tree (technical name)	Name of implementation in tree
<i>ARB_NOTE_PLG_AU_TC</i>	If you put the status of the consignment note to "finished" and its date is > validity date of the material flow/waste stream → Automatic renewal of the material flow/waste stream (/WATP/ARB_NW)	<i>ARB_INT_NOTES</i> → <i>ARB_NOTES_PLUGINS</i> → <i>ARB_NOTE_PLG_NW</i>	Plugin for renewal of supporting document when changing the status for disposal document type TC_AU
<i>ARB_AU_NOTES_SCR_INT</i>	Activates the input screens for Australian consignment documents in the notes & document management (/WATP/ARB_NOTES). Activate this implementation, if you use Australia Template.	<i>ARB_AU</i> → <i>IMPGRP_ARB_AU_NOTES</i>	Subscreens (Transnational)

ARB_HW_SR_AU	Activates the country-specific data fields required for the Australia Template in order to register the waste data at the service frequency. Activate this implementation, if you use the Australia Template.	ARB_HW_PLG → ARB_HW_SR	Hazard waste implementation at the service frequency (Australia)
ARB_MI_EXT_NW_AU	Enhancement: Tab at Material Flow for Material Inspection	ARB_AU → IMPGRP_ARB_AU_NW	Integration of Material Inspection into Material Flow Australia
ARB_NW_AU_MASK	Mask for Australian Material Flow template becomes visible (/WATP/ARB_NW)	ARB_AU → IMPGRP_ARB_AU_NW	Registration mask for Australian Material Flow template in /WATP/ARB_NW

Table 6: Implementations Australia

2.5.1.3 Implementations of Belgian Template

1. Please switch on the set: ARB_BE_SET. (*Material Flow Management → Implementations → Component activation guideline*)
2. Please switch on the set of service frequency for Belgium: ARB_HW_SR_DE - mask for (especially Belgium) (*Material Flow Management → Implementations → Material Flow Management → Plugins Hazard Waste*)
3. Optionally you can switch on the material inspection ARB_BE_MI_SET. (*Material Flow Management → Implementations → Material Flow Management → Belgium → Component Collection*)

The set ARB_BE_SET includes the following Plugins / Sets:

Implementation	Using type	Function	Node in tree (technical name)	Name of implementation in tree
ARB_BE_BASE_SET				Basic components for the Belgian Template
ARB_BE_CFG_SET				Settings specifically for the Belgian Template
ARB_BE_MI_SET	O			Integrate material inspection
ARB_BE_NOTE_OPTIONS				Options for Belgium disposal documents
ARB_CFG_SET	A			Material flow management configuration
ARB_NOTES_SET	A			Document management
ARB_NW_SET	A			Material flow management
ARB_OPTIONS				Optional Components

Table 7: Material Flow Management Belgium

Other plugins can be found at: *Material Flow Management → Implementations → Material Flow Management → Plugins for Belgium*: (The plugins are partially activated due to the activation of Material Flow Management for the sets of the Belgian Template).

Implementation	Function	Nodes in tree (technical Name)	Name of implementation in tree
ARB_NOTE_PLG_BE_IVA	If you put the status of the consignment note to "finished" and its date is > validity date of the material flow/waste stream → Automatic renewal of the material flow/waste stream (/WATP/ARB_NW)	ARB_INT_NOTES → ARB_NOTES_PLUGINS → ARB_NOTE_PLG_NW	Plugin for renewal of supporting document when changing the status for disposal document type IVA_BE
ARB_BE_NOTES_PRINT	Activates the connection of the print forms of disposal documents for the Belgian template. Activate this implementation, if you want to print consignment documents in the note management (/WATP/ARB_NOTES).	ARB_BE → IMPGRP_ARB_BE_NOTES	Print forms (documents)
ARB_BE_NOTES_SCR_INT	Activates the input screen for the Belgian consignment documents in the approval management (/WATP/ARB_NOTES). Activate this implementation, if you use the Belgian Template.	ARB_BE → IMPGRP_ARB_BE_NOTES	Subscreens (transnational)
ARB_NW_BE_MASK	Display Mask for material flow/waste stream document. (/WATP/ARB_NW)	ARB_BE IMPGRP_ARB_BE_NW	Registration mask for Belgian material flow template/WATP/ARB_NW
ARB_IMJV_SNRO	Activates the number range object for the Belgian authorities report (Numbers of the authorities' reports).	ARB_BE	Number ranges IMJV import/export
ARB_NW_TF_BE	Enhancement of the tree sorting by "authority" (/WATP/ARB_NW)	ARB_BE → IMPGRP_ARB_BE_NW	Tree sorting enhancement for Belgium
ARB_BE_CFG_NTP	Created in /WATP/ARB_CONFIG for Belgium	ARB_BE → IMPGRP_ARB_BE_CONFIG	Note types (mask)
ARB_BE_CFG_NTP_TREE	Created in /WATP/ARB_CONFIG for Belgium		Note types (tree)
ARB_BE_CFG_PTM	Created in /WATP/ARB_CONFIG for Belgium		Pre-treatments for waste (mask)
ARB_BE_CFG_PTM_TREE	Created in /WATP/ARB_CONFIG for Belgium		Pre-treatments for waste (tree)
ARB_BE_CFG_ROOT	Created in /WATP/ARB_CONFIG for Belgium		Main node for Belgium in configuration tree

Table 8: Implementations Belgium

2.5.1.4 Implementations of German Template

1. Please switch on the set: *ARB_DE_SET*. (*Material Flow Management → Implementations → Component activation guideline*)
2. Please switch on the set of service frequency for Germany: *ARB_HW_SR_DE* - mask for Germany (*Material Flow Management → Implementations → Material Flow Management → Plugins Hazard Waste*)
3. Optionally you can switch on the material inspection: *ARB_DE_MI_SET*. (*Material Flow Management → Implementations → Material Flow Management → Germany → Component Collection*)

The set *ARB_DE_SET* includes the following Plugins / Sets:

Implementation	Using type	Function	Node in tree (technical name)	Name of implementation in tree
<i>ARB_CFG_SET</i>	A			Material flow management configuration
<i>ARB_DE_BASE_SET</i>				Basic components for the German Template
<i>ARB_DE_CFG_SET</i>				Settings specifically for the German Template
<i>ARB_DE_EANV_CFG_SET</i>				eANV Configuration
<i>ARB_DE_EANV_SET</i>				EANV components (without configuration)
<i>ARB_DE_MI_SET</i>	O			Integrate material inspection
<i>ARB_DE_NOTE_OPTIONS</i>				Options for German disposal documents
<i>ARB_DECLANS_SET</i>	A			Declaration analysis
<i>ARB_INT_NW_SCR_DECL</i>	A			Subscreens (declaration analysis)
<i>ARB_INT_NW_SCR_NOTE</i>	A			Subscreens (documents)
<i>ARB_NOTES_SET</i>	A			Document management
<i>ARB_NW_SET</i>	A			Material flow management
<i>ARB_OPTIONS</i>				Optional Components

Table 9: Material Flow Management Germany

Other plugins can be found at: *Material Flow Management → Implementations → Material Flow Management → Plugins for Germany*: (The plugins are partially activated due to the activation of Material Flow Management for the sets of the German Template).

Implementation	Function	Nodes in tree (technical name)	Name of implementation in tree
ARB_NOTE_PLG_DE_BS	If you put the status of the consignment note to "finished" and its date is > validity date of the material flow/waste stream → Automatic renewal of the material flow/waste stream (/WATP/ARB_NW)	ARB_INT_NOTES → ARB_NOTES_PLUGINS → ARB_NOTE_PLG_NW	Plugin for renewal of supporting document when changing the status for disposal document type BS
ARB_NOTE_PLG_DE_SBS	If you put the status of the consignment note to "finished" and its date is > validity date of the material flow/waste stream → Automatic renewal of the material flow/waste stream (/WATP/ARB_NW)	ARB_INT_NOTES → ARB_NOTES_PLUGINS → ARB_NOTE_PLG_NW	Plugin for renewal of supporting document when changing the status for disposal document type SBS
ARB_NOTE_PLG_DE_SUES	If you put the status of the consignment note to "finished" and its date is > validity date of the Waste Stream/waste stream → Automatic renewal of the material flow/waste stream (/WATP/ARB_NW)	ARB_INT_NOTES → ARB_NOTES_PLUGINS →	Plugin for renewal of supporting document when changing the status for disposal document type SUES
ARB_NOTE_PLG_DE_UES	If you put the status of the consignment note to "finished" and its date is > validity date of the material flow/waste stream → Automatic renewal of the material flow/waste stream (/WATP/ARB_NW)	ARB_INT_NOTES → ARB_NOTES_PLUGINS → ARB_NOTE_PLG_NW	Plugin for renewal of supporting document when changing the status for disposal document type UES
ARB_DE_DECLANLS	Activates the declaration analysis in the system. Because of this the input screens and print forms for the declaration analysis in transaction (/WATP/ARB_DECLANLS) will be integrated. Activate this implementation, if you use the German Template. <i>Remark:</i> <i>Activate this implementation country independent, when you want to use declaration analysis.</i>	ARB_INT_DANAL → ARB_DECLANLS_GUI	Declaration analysis
ARB_DE_NOTES_PRINT	Activates the connection of the print forms for disposal document type of the German Template. Activate this implementation, if you want to print consignment documents in the note administration (/WATP/ARB_NOTES).	ARB_DE → IMPGRP_ARB_DE_NOTES	Print forms (documents)
ARB_DE_NOTES_SCR_INT	Activates the input screen for the German consignment documents in the approval management (/WATP/ARB_NOTES). Activate this implementation, if you use the German Template.	ARB_DE → IMPGRP_ARB_DE_NOTES	Subscreens (transnational)

ARB_DE_NW_PRINT	Activates the integration of the print forms for German Waste Streamstream types. Activate this implementation, if you want to print approvals in approval administration (/WATP/ARB_NW)	ARB_DE → IMPGRP_ARB_DE_NW	Print forms (waste approval/waste stream management)
ARB_DE_EWAORDERDOWN	Activates the integration of the print forms for consignment documents of the German Template in the transaction (EWAORDERDOWN). Activate this implementation, if you want to use the German Template.	ARB_DE → IMPGRP_ARB_DE_ODOWN	Output waste disposal orders
ARB_HW_SR_DE	Activates the country-specific data fields required for the German Template in order to register waste data in service frequency (/ELOC). Activate this implementation, if you want to use the German Template.	ARB_HW_PLG → ARB_HW_SR	Implementation of hazardous waste in service frequency (Germany)
ARB_NOTE_PLG_CRECOL	Activates the automatic generation of German collective consignment notes and collective transfer notes when creating waste disposal orders. This function will be active if the following requirements are fulfilled: - in the tab "Waste data" of the service frequency has to be assigned a transfer or consignment note to a waste disposal document template - the transfer or consignment note is assigned to a collective approval - a waste disposal order will be created for that	ARB_DE → IMPGRP_ARB_DE_NOTES	Plugin for automatic generation of collective notes when scheduling waste disposal orders
ARB_NOTES_CFG		ARB_INT_NOTES → ARB_NOTES_SETS	Settings Notes (/WATP/ARB_CONFIG)

Table 10 Implementations Germany

2.5.1.4.1 Implementations to Activate and Deactivate the New and Old UI

The plugins can be found at: *Material Flow Management* → *Implementations* → *Material Flow Management* → *Germany* → *Component collection*

Implementation	Function	Nodes in tree (technical name)	Name of implementation in tree
ARB_DE_NW_OLD_UI (Set/default)	Activates the view of the old ARB_NW mask(s). Activate this implementation to use the view of tabs according to the requirements until 2010. All corresponding plugins to view the old ARB-NW mask(s) will be activated automatically	ARB → ARB_DE → ARB_DE_SETS	

SAP S/4HANA for waste and recycling, environmental services add-on by PROLOGA - Material Flow Management - Config Guide

	while all plugins for viewing the new ARB-NW mask(s) will be deactivated.		
ARB_DE_NW_NEW_UI (Set)	Activates the view of the new ARB_NW mask(s). Activate this implementation to use the view of tabs according to the requirements starting in 2010. All corresponding plugins to view the new ARB-NW mask(s) will be activated automatically while all plugins for viewing the old ARB-NW mask(s) will be deactivated.	ARB → ARB_DE → ARB_DE_SETS	

Table 11 Sets to activate the old or new UI

The corresponding plugins of the sets *ARB_DE_NW_OLD_UI* and *ARB_DE_NW_NEW_UI* can be found at: *Material Flow Management → Implementations → Material Flow Management → Germany → Plugins for Waste Streams → [IMPGRP_ARB_DE_NW_UI]*: (Plugins will be activated or deactivated automatically by activating the respective set but can also be activated or deactivated manually.)

Implementation	Function	Nodes in tree (technical name)	Name of implementation in tree
ARB_NW_DE_SW_AE	Disables the AE tab (new UI starting in 2010)	ARB → ARB_DE → IMPGRP_ARB_DE_NW → IMPGRP_ARB_DE_NW_UI → ARB_NW_DE_SW_AE	
ARB_NW_DE_SW_AE1	Disables the AE1 tab (old UI until 2010)	ARB → ARB_DE → IMPGRP_ARB_DE_NW → IMPGRP_ARB_DE_NW_UI → ARB_NW_DE_SW_AE	
ARB_NW_DE_SW_AE2	Disabled the AE2 tab (old UI until 2010)	ARB → ARB_DE → IMPGRP_ARB_DE_NW → IMPGRP_ARB_DE_NW_UI → ARB_NW_DE_SW_AE	
ARB_NW_DE_SW_BB	Hides the BB tab (old UI until 2010)	ARB → ARB_DE → IMPGRP_ARB_DE_NW → IMPGRP_ARB_DE_NW_UI → ARB_NW_DE_SW_BB	
ARB_NW_DE_SW_BB_NEW	Hides the BB tab (new UI starting in 2010)	ARB → ARB_DE → IMPGRP_ARB_DE_NW → IMPGRP_ARB_DE_NW_UI → ARB_NW_DE_SW_BB	
ARB_NW_DE_SW_DEN	Hides DEN tab (old UI until 2010)	ARB → ARB_DE → IMPGRP_ARB_DE_NW → IMPGRP_ARB_DE_NW_UI → ARB_NW_DE_SW_DEN	
ARB_NW_DE_SW_DEN_NEW	Hides DEN tab (new UI until 2010)	ARB → ARB_DE → IMPGRP_ARB_DE_NW → IMPGRP_ARB_DE_NW_UI → ARB_NW_DE_SW_DEN	
ARB_NW_DE_SW_INFO2	Disables the MengenInfo tab (old UI until 2010)	ARB → ARB_DE → IMPGRP_ARB_DE_NW → IMPGRP_ARB_DE_NW_UI → ARB_NW_DE_SW_INFO	
ARB_DE_NW_UI_SW_INFO	Disables the MengenInfo tab (new UI starting in 2010)	ARB → ARB_DE → IMPGRP_ARB_DE_NW → IMPGRP_ARB_DE_NW_UI → ARB_NW_DE_SW_INFO	
ARB_DE_NW_UI_FLD_VE1	Hides fields in the VE1 tab (new UI starting in 2010)	ARB → ARB_DE → IMPGRP_ARB_DE_NW →	

		<i>IMPGRP_ARB_DE_NW_UI</i> → <i>ARB_NW_DE_SW_VE1</i>	
<i>ARB_NW_DE_SW_VE1</i>	Hides the VE1 tab (old UI until 2010)	<i>ARB</i> → <i>ARB_DE</i> → <i>IMPGRP_ARB_DE_NW</i> → <i>IMPGRP_ARB_DE_NW_UI</i> → <i>ARB_NW_DE_SW_VE1</i>	
<i>ARB_NW_DE_SW_VE1_NEW</i>	Hides VE1 tab (new UI starting in 2010)	<i>ARB</i> → <i>ARB_DE</i> → <i>IMPGRP_ARB_DE_NW</i> → <i>IMPGRP_ARB_DE_NW_UI</i> → <i>ARB_NW_DE_SW_VE1</i>	
<i>ARB_NW_DE_SW_VE2</i>	Hides VE2 tab (old UI until 2010)	<i>ARB</i> → <i>ARB_DE</i> → <i>IMPGRP_ARB_DE_NW</i> → <i>IMPGRP_ARB_DE_NW_UI</i> → <i>ARB_NW_DE_SW_VE2</i>	
<i>ARB_NW_DE_SW_VE2_NEW</i>	Hides VE2 tab (new UI starting in 2010)	<i>ARB</i> → <i>ARB_DE</i> → <i>IMPGRP_ARB_DE_NW</i> → <i>IMPGRP_ARB_DE_NW_UI</i> → <i>ARB_NW_DE_SW_VE2</i>	

Table 12 Plugins to hide/disable tabs in new and old UI

2.5.1.4.2 Screenshots: View of UI (Old/New)

When *ARB_NW_DE_OLD_U* is activated the tabs are displayed as shown in the figure:

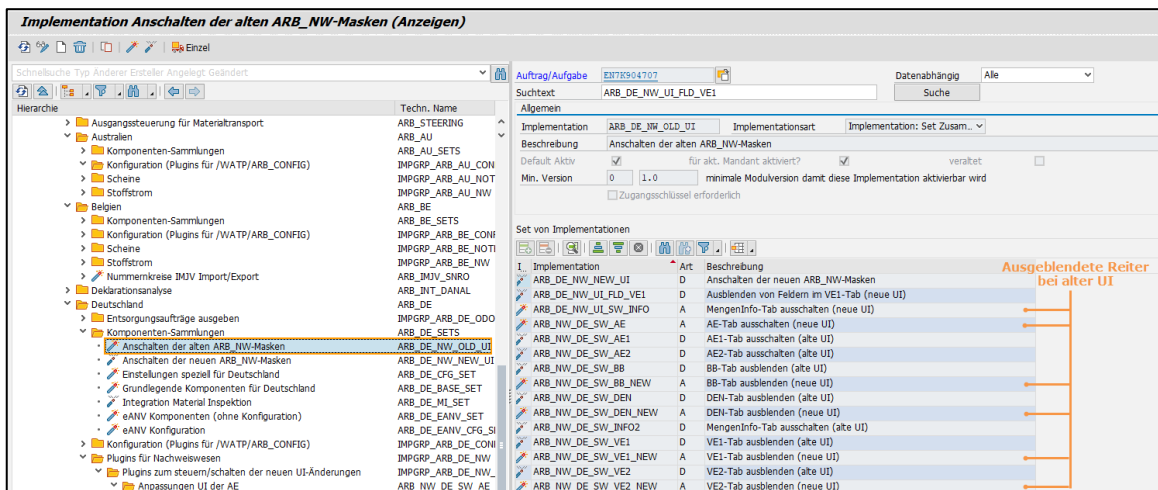


Figure 5: ARB_DE_NW_OLD_UI activated

The following tabs are displayed in the UI:

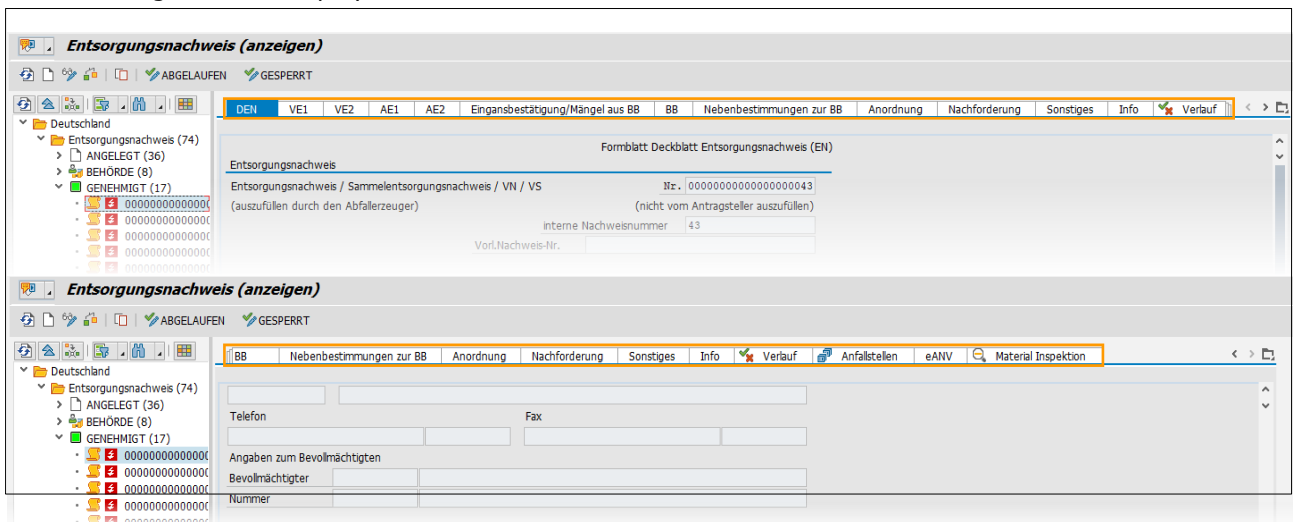


Figure 6: Displayed tabs in the old UI

SAP S/4HANA for waste and recycling, environmental services add-on by PROLOGA - Material Flow Management - Config Guide

When ARB_NW_DE_NEW_U is activated the tabs are displayed as shown in the figure:

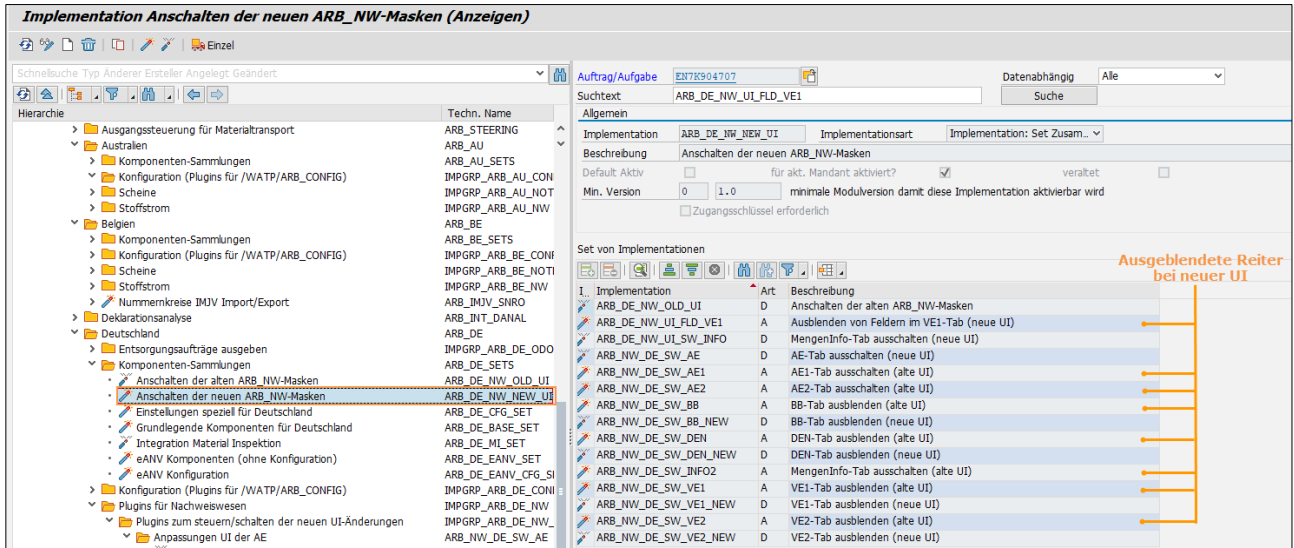


Figure 7: ARB_DE_NW_NEW_UI activated

The following tabs are displayed in the UI:

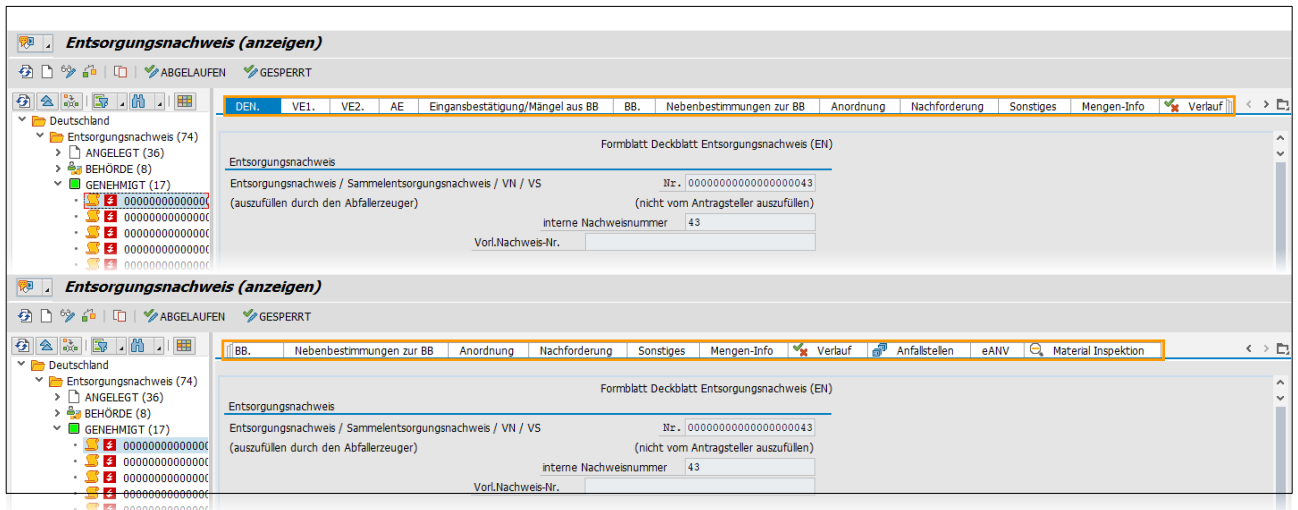


Figure 8: Displayed tabs in the new UI

The view in tab VE31 differs in the following way:

DEN	VE1	VE2	AE1	AE2	Eingangsbestätigung/Mängel aus BB	BB	Nebenbestimmungen zur BB
Art der Verantwortlichen Erklärung					zu Nr. 00000000000000000043		
V Verantwortliche Erklärung für Entsorgungsn... (auszufüllen durch den Abfallerzeuger)					(nicht vom Antragsteller auszufüllen, bei Konzept/Bilanz aus Deckblatt zu übertragen) zu lfd. Nr. 0 VE 1) Folgeblatt ist beigefügt <input type="checkbox"/>		
Abfallherkunft							
Abfallherkunft (nicht auszufüllen bei Sammelentsorgung)							
Erzeugernummer				Standplatz			
NERZ1000020				20000273			
Bezeichnung der Anfallstelle 1							
Bezeichnung der Anfallstelle 2							
Anlage ist nach BImSchG, Nr.		Spalte 0		der Anlage zur 4. BImSchV, genehmigt.			
Anlagennummer nach BImSchG-Genehmigung							
Zuständiger Betriebsbeauftragter für Abfall lfd.Nr.				0 BA (aus Deckblatt für Konzept/Bilanz)			
Name		Straße					
Postleitzahl		Ort					
Ansprechpartner		Name					
Telefon				Fax			
E-Mail-Adresse							
Die Anzeige nach §11 NachweisV für die Anfallstelle liegt der zuständigen Behörde vor: <input type="checkbox"/>							
				wenn ja, Anzeigenummer			
Gültigkeit							
Beginn Laufzeit VE		Ende Laufzeit VE					
1) Bitte fortlaufend nummerieren							
2) Betriebsstätte, ortsfeste Einrichtung, ortsveränderliche technische Einrichtung oder Grundstück							

Figure 9: Tab VE1 in the old UI

DEN.	VE1.	VE2.	AE	Eingangsbestätigung/Mängel aus BB	BB.	Nebenbestimmungen zur BB	A
------	-------------	------	----	-----------------------------------	-----	--------------------------	---

Formblatt Verantwortlichen Erklärung (VE)

Art _____ Nr _____

Art der Verantwortlichen Erklärung _____ zu Nr. 00000000000000000043

V Verantwortliche Erklärung für Entsorgungsn... ▾
(auszufüllen durch den Abfallerzeuger)

Abfallherkunft

Abfallherkunft (nicht auszufüllen bei Sammelentsorgung)

Erzeugernummer _____ Standplatz _____

NERZ1000020 _____ 20000273

Bezeichnung der Anfallstelle 1 _____

Anlage ist nach BImSchG, Nr. _____ Spalte 0 der Anlage zur 4. BImSchV, genehmigt.

Anlagennummer nach BImSchG-Genehmigung _____

Name _____ Straße _____

Postleitzahl _____ Ort _____

Ansprechpartner _____ Name _____

Telefon _____ Fax _____

Gültigkeit

Beginn Laufzeit VE _____ Ende Laufzeit VE _____

Figure 10: Tab VE1 in the new UI

2.5.1.5 Implementations of Dutch Template

1. Please switch on the set: *ARB_NL_SET*. (*Material Flow Management → Implementations → Component activation guideline*)
2. Please switch on the set of service frequency for Netherlands: *ARB_HW_SR_NL* – mask for Netherlands. (*Material Flow Management → Implementations → Material Flow Management → Plugins Hazard Waste*)
3. Optionally you can switch on the material inspection: *ARB_NL_MI_SET*. (*Material Flow Management → Implementations → Material Flow Management → Netherlands → Component Collection*)

The set *ARB_NL_SET* includes the following Plugins / Sets:

Implementation	Function	Nodes in tree (technical name)	Name of implementation in tree	Implementation
ARB_CFG_SET	A			Material flow management configuration
ARB_DECLANS_SET	A			Declaration analysis
ARB_INT_NW_SCR_DECL	A			Subscreens (declaration analysis)
ARB_INT_NW_SCR_NOTE	A			Subscreens (documents)
ARB_NL_BASE_SET				Basic components for the Dutch Template
ARB_NL_CFG_SET				Settings specifically for the Dutch Template
ARB_NL_EBA_SET	O			Electronically dispatch note for wastes
ARB_NL_MI_SET	O			Integrate material inspection
ARB_NL_NOTE_OPTIONS				Option for Dutch disposal documents
ARB_NOTES_SET	A			Document management
ARB_NW_SET	A			Material flow management
ARB_OPTIONS				Optional Components

Table 13 Material Flow Management Netherlands

Other plugins can be found at: *Material Flow Management* → *Implementations* → *Material Flow Management* → *Plugins for Netherlands*: (The plugins are partially activated due to the activation of Material Flow Management sets of the Dutch Template).

Implementation	Function	Nodes in tree (technical name)	Name of Implementation in tree
ARB_NOTE_PLG_NL_BS	Automatically renewal of document when changing status finished.	ARB_NOTE_PLG_NW	Plugin for renewal of supporting document when changing the status for disposal document type BS_NL
ARB_NL_CFG_AVVSR	Display mask for AVV-settings in /WATP/ARB_CONFIG.	ARB_NL → ARB_NL_CFG	EWC entries in the special regulation procedure
ARB_NL_CFG_AVVSRTREE	Display node AVV-settings on tree (/WATP/ARB_CONFIG).	ARB_NL → ARB_NL_CFG	Implement EWC special regulation in the configuration tree
ARB_NL_NOTES_PRINT	Activates the integration of the print forms for the disposal document type of the Dutch Template. Activate this implementation, if you want to print	ARB_NL → IMPGRP_ARB_NL_NOTES	Print forms (documents)

	consignment notes in notes management (/WATP/ARB_Notes).		
ARB_NL_NOTES_SCR_INT	Activates the input screens for the Dutch consignment document in the note management (/WATP/ARB_NOTES). Activate this implementation, if you use the Dutch Template.	ARB_NL → IMPGRP_ARB_NL_NOTES	Subscreens (transnational)
ARB_NL_NW_PRINT	Activates the integration of the print forms for the Dutch material flow/waste stream. (Omschrijvingsformulier) Activate this implementation, if you want to print this form in the Waste Stream management (/WATP/ARB_NW).	ARB_NL → IMPGRP_ARB_NL_NW	Print forms (waste approval/waste stream management)
ARB_NW_TF_NL	(Additional filter in search help /WATP/ARB_NW)	ARB_NL → IMPGRP_ARB_NL_NW	Dutch enhancement to enhanced filter
ARB_AMICE_SNRO	Activates the number range object for the Dutch authorities report -AMICE/LMA (Numbers of authorities report).	ARB_NL	Number ranges LMA/AMICE Import/Export
ARB_HW_SR_NL	Activates the country-specific data fields required for the Netherlands template in the tab waste data at the service frequency. (/ELOC) Activate this implementation, if you use the waste legislation in the Netherlands.	ARB_HW_PLG → ARB_HW_SR	Implementation of hazardous waste in service frequency (Netherlands)
ARB_NW_NL_MASK		ARB_NL → IMPGRP_ARB_NL_NW	Registration mask for the Dutch material flow template in transaction /WATP/ARB_NW
ARB_MI_EXT_NW_NL_TAB		ARB_NL → IMPGRP_ARB_NL_NW	Integration material inspection in material flow template of the Netherlands

Table 14: Implementations of the Netherlands

The following set switches on EBA for the Netherlands: ARB_NL_EBA_SET.

Implementation	Function	Nodes in tree (technical name)	Name of Implementation in tree
ARB_EBA_IEPROC	Activates the integration of the export/ import protocol into transaction /WATP/EBA_OVERVIEW.		Integrate Imp/Exp process from EBA document into EBA overview
ARB_EBA_NOTE_CONFIG	Activates the tab EBA on the disposal document NL.		Integration of EBA setting into disposal document (Netherlands)
ARB_EBA_NW_CONFIG	Activates the tab EBA on the waste stream NL		Integration of EBA setting into material flow (Netherlands)

ARB_EBA_PLG_BO_NOTE	Activates the EBA process integration of an EBA relevant disposal document, if it's marked as EBA relevant within transaction /WATP/ARB_NOTES.		Connection of disposal document with EBA processes
ARB_EBA_PLG_HW	Activates the takeover of the license plate from the EBA relevant disposal document into the weighing transaction.		EBA enhancement of Hazard Waste
ARB_EBA_PLG_NOTE_BOK			EBA plugin for overload the transaction post in the disposal document
ARB_EBA_PLG_NOTE_CFG	Activates the takeover of the EBA settings on the waste stream NL into the related disposal document.		Apply the EBA settings of the disposal document blueprint resp. the material flow
ARB_EBA_PLG_NOTE_MSK	Activates the disconnection of manually cancellation or editing of an EBA-relevant disposal document. It can just be done by a document status message.		EBA plugin for disposal document mask - restrict the functions in the mask for EBA relevant disposal documents
ARB_EBA_PLG_WPROC	Activates all EBA relevant processes after posting a weighing transaction with an EBA relevant disposal document.		EBA enhancement of the weighing process EBA

Table 15: Netherlands EBA

2.5.1.6 Implementations of Norwegian Template

1. Please switch on the set: *ARB_NO_SET*. (*Material Flow Management → Implementations → Component activation guideline*)
2. Please switch on the set of service frequency for Norway: *ARB_HW_SR_NO* – mask for Norway. (*Material Flow Management → Implementations → Material Flow Management → Plugins Hazard Waste*)
3. Optionally you can switch on the material inspection: *ARB_NO_MI_SET*. (*Material Flow Management → Implementations → Material Flow Management → Norway → Component Collection*)

The set *ARB_NO_SET* includes the following Plugins / sets:

Implementation	Function	Nodes in tree (technical name)	Name of Implementation in tree	Implementation
<i>ARB_CFG_SET</i>	A			Material flow management configuration
<i>ARB_NO_BASE_SET</i>				Basic components for the Norwegian Template
<i>ARB_NO_CFG_SET</i>				Settings specifically for the Norwegian Template

SAP S/4HANA for waste and recycling, environmental services add-on by PROLOGA - Material Flow Management - Config Guide

ARB_NOTES_SET	A			Document management
ARB_NW_SET	A			Material flow management
ARB_OPTIONS				Optional Components

Table 16: Material Flow Management Norway

Other plugins can be found at: *Material Flow Management* → *Implementations* → *Material Flow Management* → *Plugins for Norway*: (The plugins are partially activated due to the activation of Material Flow Management sets of the Norwegian Template for the Norwegian sets.)

Implementation	Function	Nodes in tree (technical name)	Name of Implementation in tree
ARB_NO_CFG_FLDMOD	General basic functionality. Activate this implementation, if you use the Norwegian Template.	ARB_NO → IMPGRP_ARB_NO_CONFIG	Field modification (configuration)
ARB_NO_NOTES_BFLDMOD	General basic functionality. Activate this implementation, if you use the Norwegian Template.	ARB_NO → IMPGRP_ARB_NO_NOTES	BO field modifications (disposal documents)
ARB_NO_NOTES_FLDMOD	General basic functionality. Activate this implementation, if you use the Norwegian Template.	ARB_NO → IMPGRP_ARB_NO_NOTES	Field modifications (disposal documents)
ARB_NO_NOTES_PRINT	Activates the integration of the print forms for the Norwegian disposal document type. Activate this implementation, if you want to print consignment documents in the note management (/WATP/ARB_NOTES).	ARB_NO → IMPGRP_ARB_NO_NOTES	Print forms (documents)
ARB_NO_NOTES_SCR_INT	Activates the input screens for the Norwegian consignment documents in the notes management (/WATP/ARB_NOTES). Activate this implementation, if you use Norwegian Template.	ARB_NO → IMPGRP_ARB_NO_NOTES	Subscreens (transnational)
ARB_NO_EWAORDERDOWN	Activates the integration of the print forms for Norwegian consignment documents in the transaction (EWAORDERDOWN). Activate this implementation, if you use the Norwegian Template.	ARB_NO → IMPGRP_ARB_NO_ODOWN	Output waste disposal orders
ARB_HW_SR_NO	Activates the country specific data fields required for the Norwegian Template in the tab waste data in service frequency. Activate this implementation, if you use the waste legislation in Norway.	ARB_HW_PLG → ARB_HW_SR	Implementation of hazardous waste in service frequency (Norway)

Table 17: Implementation Norway

2.5.1.7 Implementations Transnational

Implementation	Function	Nodes in tree (technical name)	Name of Implementation in tree
ARB_INT_NOTES_CHOICE	Activates the selection dialog for the disposal facility of waste disposal documents in service frequency and the accelerated weight entry.	ARB_INT_NOTES → ARB_NOTES_PLUGINS	Subscreens (Selection of note)
ARB_INT_NW_SCR_DECL	Activates the input screen for the declaration analysis in the Waste Stream management.	ARB_INT_DANAL → ARB_DECLANS_GUI	Subscreens (Declaration analysis)
ARB_INT_NW_SCR_NOTE	Activates the input screen for consignment documents in the approval management (/WATP/ARB_NW).	ARB_NW → IMPGRP_ARB_NW	Subscreens (Disposal documents)

Table 18: Implementations transnational

2.5.2 Global Implementations (/WATP/BASE_OBJCONFIG)

2.5.2.1 Configuration

Global implementations will be activated with all specific territorial rights:

The set ARB_CFG_CMN_SET includes the following Plugins:

- Consideration of the new terms in the transaction /WATP/ARB_CONFIG.
- After the migration report the country classifications of the partner types, note types and the material flow/waste stream types have to be checked and if necessary be changed.

Implementation	Function	Nodes in tree (technical name)	Name of Implementation in tree
ARB_CFG_CMN		ARB_CFG_CMN	Plugins for general setting
ARB_CFG_ADRRLE	Needed for the use of the ADR regulations in /WATP/ARB_ADRUNCA		ADR regulation (mask)
ARB_CFG_ADRRLE_TREE	Needed for the use of the ADR regulations in /WATP/ARB_ADRUNCA		ADR regulation (tree)
ARB_CFG_CMN			ARB configuration (mask)
ARB_CFG_CMN_TREE			ARB configuration (tree)
ARB_CFG_COLLCAT	Needed for the collective categories in /WATP/ARB_AVV		Collective categories
ARB_CFG_COLLCAT_TREE			Collective categories (tree)
ARB_CFG_CTRLVL			Monitoring level (mask)
ARB_CFG_CTRLVL_TREE			Monitoring level (tree)
ARB_CFG_POLREG			Federal state codes (mask)
ARB_CFG_POLREG_TREE			Federal state codes (tree)

SAP S/4HANA for waste and recycling, environmental services add-on by PROLOGA - Material Flow Management - Config Guide

ARB_CFG_PTNRTYPE			Partner types (mask)
ARB_CFG_TMM			Treatment procedures (tree)
ARB_CFG_TMM_TREE			Treatment procedures (mask)
ARB_CFG_WOT			Type of transport (mask)
ARB_CFG_WOT_TREE			Type of transport (tree)
ARB_CFG_WSTMODE			Waste disposal procedure (mask)
ARB_CFG_WSTMODE_TREE			Waste disposal procedure (tree)
ARB_CFG_TRANS_SET			Configuration transaction /WATP/ARB_CONFIG
ARB_CFG_TREESORT			Tree sorting in ARB configuration

Table 19: Implementations for /WATP/ARB_CONFIG

Implementation	Function	Nodes in tree (technical name)	Name of implementation in tree
ARB_NOTES_SNRO	Activates the number range objects for external (/WATP/AESN) and internal (/WATP/NOTE) numbers of disposal notes. Activate this implementation if you use the material flow management component.		Number ranges (disposal documents)
ARB_NW_SNRO	Activates the number range object (/WATP/ARNW) for the internal number of approvals. Activate this implementation if you use the material flow management component.		Number ranges (waste approval/waste stream management)
ARB_SNRO	Activates the number range object for: a) AVV-Group-Number (/WATP/ARAG) b) Declaration analyses (/WATP/ARDN) c) NGS (/WATP/ARNA)		Number ranges (general)
ARB_HW_PLG_ORDOBJECT	Activates the integration of the material flow management component to the waste disposal order process chain of SAP S/4HANA for waste and recycling. This is the automatic generation of the consignment note by order creation. Activate this implementation if you use the material flow management component.	ARB_HW_PLG	Waste disposal order item
ARB_HW_PLG_ORDWEIGH	Activates the integration of the material flow management component in the weigh bill processing of		Weigh bill

SAP S/4HANA for waste and recycling, environmental services add-on by PROLOGA - Material Flow Management - Config Guide

	<p>SAP S/4HANA for waste and recycling. The automatic quantity posting of weighing records to consignment notes is activated.</p> <p>Activate this implementation if you use the material flow management component.</p>		
ARB_HW_PLG_WDORDER	<p>General basic functionality. Activate this implementation if you want to use the implementation ARB_HW_PLG_WDORD_SC.</p>		Implementation of legal requirements for basic plugin for enhancements to the waste disposal order head
ARB_HW_PLG_WDORD_SC	<p>Activates the automatic status change of consignment notes with posting of a waste disposal order head in the confirmation transaction EWAWDOC.</p> <p>Consignment notes in posted weighing bills on the order head is automatically set to the status FINISHED when the waste disposal order head is posted.</p>		Implementation ARB plugin for changing the note status upon confirmation of the waste disposal order head
ARB_HW_PLG_WEIGHPROC	<p>General basic functionality.</p>	ARB_SW	Implementation of legal requirements of basic plugin for enhancements to the weighing process
ARB_HW_PLG_WPROC_NWB	<p>Activates the automatic quantity posting of the weighing procedure to disposal documents at posting the weighing procedure in the transaction EWAWA01.</p>	ARB_SW	Accelerated weighing entry, weighing process for external delivery: Update quantities in corresponding disposal document when posting.
ARB_HW_PLG_WPROC_NWR	<p>Activates the automatic quantity cancellation of the weighing procedure to disposal documents at cancellation the weighing procedure in the transaction EWAWA01.</p> <p>In order to use this plugin ARB_HW_PLG_WPROC_SCB has to be deactivated.</p>	ARB_SW	Accelerated weighing entry, weighing process for external delivery: Update quantities in corresponding disposal document when cancelling.
ARB_HW_PLG_WPROC_SCB	<p>Enables the automatic status change of disposal documents by SD transfer or cash sales in the transaction EWAWA01. The disposal document associated with the weighing procedure will be automatically set to the status FINISHED.</p>	ARB_SW	Accelerated weighing entry, weighing process for external delivery: Set corresponding disposal document to "finished" when posting.
ARB_HW_PLG_WPROC_SCR	<p>Enables the automatic status change of disposal documents from FINISHED to CANCELLED at cancellation of the weighing</p>	ARB_SW	Accelerated weighing entry, weighing process for external delivery: Set

	procedure in transaction EWAWA01.		corresponding disposal document to "cancelled" when cancelling.
ARB_HW_PLG_SW_NW_SET	Activates following plugins: ARB_HW_PLG_WEIGHPROC ARB_HW_PLG_WPROC_NWB ARB_HW_PLG_WPROC_NWR	ARB_SW	Accelerated weighing entry, weighing process for external delivery: Update quantities in corresponding disposal document when posting/cancelling.
ARB_HW_PLG_SW_SC_SET	Activates following plugins: ARB_HW_PLG_WEIGHPROC ARB_HW_PLG_WPROC_SCB ARB_HW_PLG_WPROC_SCR	ARB_SW	Accelerated weighing entry, weighing process for external delivery: Set corresponding disposal document to "finished"/"cancelled" when posting/cancelling.
ARB_NOTE_PLG_EXTNR	Enables the transfer of the external consignment note number from the confirmation transaction EWAWDOC in consignment notes. The external document number is displayed in the confirmation in a confirmation field on order item level and is written back in the consignment note of the order item.	ARB_INT_NOTES → ARB_NOTES_PLUGINS	Plugin for automatic transfer of external document numbers from confirmation
ARB_NOTE_PLG_NSC	Enables the automatic status change of the consignment note on an order item by posting the order item in the confirmation transaction EWAWDOC. While posting the order item, the consignment note is automatically set to the status COMPLETED. This feature is data dependent configured on the Legal Requirements configuration transaction /WATP/ARB_CONFIG.		Status change of the notes from the confirmation
ARB_NOTE_PLG_NW	Activates a function for automatically extension of a Waste Stream of 3 years. The function is active when a consignment document initiates an approval post. It is recommended to use this feature when the Dutch waste legislation is to be used.		Plugin for renewal of supporting document when booking quantity in the note
ARB_NOTE_PLG_QNT_NSC	Enables automatic quantity posting to an order item to the corresponding consignment document during the posting of the order item in the confirmation transaction EWAWDOC. This implementation should not be activated together with		Transfer of the waste quantities from the confirmation (without status change of the notes)

	the implementation <i>ARB_HW_PLG_WPROC_NB</i> or <i>ARB_NOTE_PLG_QUANT</i> .		
<i>ARB_NOTE_PLG_QUANT</i>	Activates simultaneously the functions of the implementations <i>ARB_NOTE_PLG_NSC</i> and <i>ARB_NOTE_PLG_QNT_NSC</i> . It is recommended not to use these implementations. Instead, activate the two implementations <i>ARB_NOTE_PLG_NSC</i> und <i>ARB_NOTE_PLG_QNT_NSC</i> .		Plugin for automatic transmission of waste quantity from confirmation
<i>ARB_NW_LIST_FILTER</i>	Activates approval filter in transaction <i>/WATP/ARB_NW_LIST</i>	<i>ARB_NW</i> → <i>ARB_NW_LIST</i>	wasteapproval/waste stream/waste stream filter in <i>ARB_NW_LIST</i> (Initial)
<i>ARB_NW_LIST_OVERVIEW</i>	Activates standard view in transaction <i>/WATP/ARB_NW_LIST</i>		Overview list of waste approval /waste streams in <i>ARB_NW_LIST</i>
<i>ARB_NW_OVERVIEW_EXC</i>	Activates suppression of warning messages at status changes of Waste Streams		Overview list of waste approval/waste stream: Hiding warnings while booking
<i>ARB_NW_TF_PLG</i>	Activates approval filter in transaction <i>/WATP/ARB_NW</i>	<i>ARB_NW</i> → <i>IMPGRP_ARB_NW</i>	waste approval/waste stream filter in <i>ARB_NW</i> (Initial + "enhanced filter")

Table 20: Global Implementations

2.5.2.2 Implementation Disposal Documents

Implementation	Function	Nodes in tree (technical name)	Name of Implementation in tree
<i>ARB_CFG_CERTTYPE</i>		<i>ARB_INT_NOTES</i> → <i>ARB_NOTES_CFG</i>	Document type (screen)
<i>ARB_CFG_CERTTYP_TREE</i>			Document types (tree)
<i>ARB_CFG_NOTES_TREE</i>			Disposal documents (tree)
<i>ARB_CFG_NQUANT</i>			Service types for automatic disposal document postings (screen)
<i>ARB_CFG_NQUANT_TREE</i>			Service types for automatic disposal document postings (tree)
<i>ARB_NOTES_PLUGINS</i>			
<i>ARB_NOTE_PLG_NW</i>			Waste Stream/waste stream
<i>ARB_NOTE_PLG_AU_TC</i>		<i>ARB_INT_NOTES</i> → <i>ARB_NOTES_PLUGINS</i> → <i>ARB_NOTE_PLG_NW</i>	Plugin for renewal of supporting document when changing the status for disposal document type <i>TC_AU</i>
<i>ARB_NOTE_PLG_BE_IVA</i>			Plugin for renewal of

			supporting document when changing the status for disposal document type IVA_BE
ARB_NOTE_PLG_DE_SBS			Plugin for renewal of supporting document when changing the status for disposal document type SBS
ARB_NOTE_PLG_DE_SUES			Plugin for renewal of supporting document when changing the status for disposal document type SUES
ARB_NOTE_PLG_DE_UES			Plugin for renewal of supporting document when changing the status for disposal document type UES
ARB_NOTE_PLG_NL_BS			Plugin for renewal of supporting document when changing the status for disposal document type BS_NL
ARB_INT_NOTES_CHOICE		ARB_NOTES_PLUGINS	Subscreens (selection of note)
ARB_NOTE_PLG_EXTNR			Plugin for automatic transfer of external document numbers from confirmation
ARB_NOTE_PLG_NSC			Status change of the notes from the confirmation
ARB_NOTE_PLG_QNT_NSC			Transfer of the waste quantities from the confirmation (without status change of the notes)
ARB_NOTE_PLG_QUANT			Plugin for autom. transmission of waste quantity from confirmation
ARB_NOTES_CFG		ARB_INT_NOTES	disposal document settings (/WATP/ARB_CONFIG)

Table 21: Implementation Disposal Documents

2.5.2.3 Implementations of Notification Template

Implementation	Function	Nodes in tree (technical name)	Name of Implementation in tree
ARB_NTY_CFG_BASE	General basic functionality. Activate this implementation, if you want to use the notification.	ARB_NTY → IMPGRP_ARB_NTY_CFG	General settings (configuration)
ARB_BF_NOTES_SCR_INT	Activates the input mask for the consignment form of notification in the transaction	ARB_NTY → ARB_NTY_NOTES	Subscreens (accompanying form)

	(/WATP/ARB_NTY). Activate this implementation, if you want to use the notification.		
ARB_NTY_CFG_SCREEN	Activates the configuration of the specifications of waste legislation for the notification in the transaction (/WATP/ARB_CONFIG). Because of this, there are additional configurations nodes which will appear in that transaction. Activate this implementation, if you want to use the notification.	ARB_NTY → IMPGRP_ARB_NTY_CFG	Subscreens (configuration)
ARB_NTY_PNT_INT	Activates the integration of the print forms for notification. Activate this implementation, if you want to print the notification form in the transaction (/WATP/ARB_NTY).	ARB_NTY	Printed forms (notification)

Table 22: Implementations Notification Template

2.5.2.4 Implementations of Declaration Analysis Template

The declaration analysis can be switched on with the set ARB_DECLANS_SET.

Implementation	Function	Nodes in tree (technical name)	Name of Implementation in tree
ARB_DECLANS_CFG		ARB_INT_DANAL	Settings (Plugins for /WATP/ARB_CONFIG)
ARB_CFG_DECLV		ARB_INT_DANAL → ARB_DECLANS_CFG	Parameter for declaration analysis (screen)
ARB_CFG_DECLV_TREE			Parameter for declaration analysis (tree)
ARB_DECLANS_GUI		ARB_INT_DANAL	Screens and integration in transactions
ARB_DE_DECLANLS		ARB_INT_DANAL → ARB_DECLANS_GUI	Declaration analysis (mask) in /WATP/ARB_DECLANLS
ARB_INT_NW_SCR_DECL			Subscreens (declaration analysis)
ARB_DECLANS_SET		ARB_INT_DANAL	Declaration analysis

Table 23: Implementation Declaration Analysis Template



2.5.2.5 Implementations of General Waste Streams Templates

Implementation	Function	Nodes in tree (technical name)	Name of Implementation in tree
ARB_NW			Waste Streams (General)
ARB_CFG_MS		ARB_NW	Configuration (Plugins

			for /WATP/ARB_CONFIG)
ARB_CFG_NWC		ARB_NW → ARB_CFG_MS	General settings for material flows (screen)
ARB_CFG_NWC_TREE			material flows (main nodes in the tree)
ARB_CFG_PRT			Material flow type (screen)
ARB_CFG_PRT_TREE			Material flow type (tree)
ARB_NW_LIST		ARB_NW	Material flow list /WATP/ARB_NW_LIST
ARB_NW_LIST_FILTER		ARB_NW → ARB_NW_LIST	Approval filter in ARB_NW_LIST (Initial)
ARB_NW_LIST_OVERVIEW			Overview list of Waste Streams in ARB_NW_LIST
ARB_NW_OVERVIEW_EXC			Overview list of Waste Streams: Hiding warnings while booking
ARB_NW_SET		ARB_NW	Component collection
ARB_CFG_MS_SET		ARB_NW → ARB_NW_SET	Material flow settings
ARB_NW_LIST_SET			List transaction for material flows (/WATP/ARB_NW_LIST)
ARB_NW_TREE_SET			Tree transaction for material flow (/WATP/ARB_NW)
IMPGRP_ARB_NW		ARB_NW	Documentation of Waste Streams
ARB_INT_NW_SCR_NOTE			Subscreens (documents)
ARB_NW_TF_PLG			Approval filter in ARB_NW (Initial + "enhanced filter")

Table 24: Implementation of General Waste Stream Templates

2.5.2.6 Available Templates of Print Forms

In order to print forms in the appropriate transactions in the material flow management application, you have to assign the forms in the implementations for this (see chapter 2.5.1 and 2.5.2). To do this, select the appropriate implementation, change into edit mode with  and assign the corresponding print forms with  on the tab *Print forms* of this application.

SAP S/4HANA for waste and recycling, environmental services add-on by PROLOGA - Material Flow Management - Config Guide

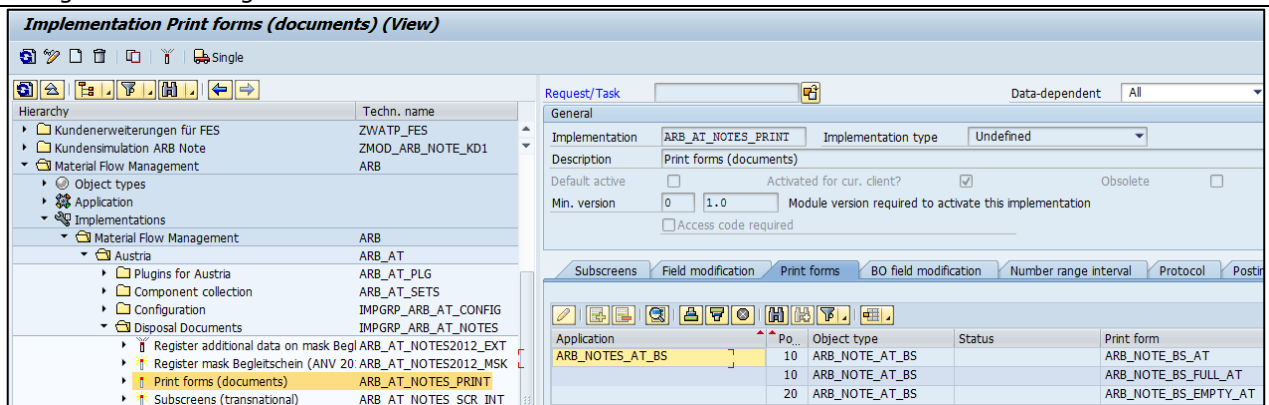


Figure 11: Assignment of Print Form Templates to Implementations

The application *Material Flow Management* already includes a variety of templates for print forms in the delivery. These can be used as a template for its own characteristics.

The following table provides an overview of existing print forms:

Print Forms	Used for	Associated Application	Associated Implementation
ARB_DECLANLS_DE	Declaration analysis	ARB_DECLANLS	ARB_DE_DECLANLS
ARB_DECLANLS_EMPTY_DE	Declaration analysis	ARB_DECLANLS	ARB_DE_DECLANLS
ARB_DECLANLS_EMPTY_SW_DE	Declaration analysis	ARB_DECLANLS	ARB_DE_DECLANLS
ARB_DECLANLS_FULL_DE	Declaration analysis	ARB_DECLANLS	ARB_DE_DECLANLS
ARB_DECLANLS_FULL_SW_DE	Declaration analysis	ARB_DECLANLS	ARB_DE_DECLANLS
ARB_NOTE_BS_AT	Waste Disposal Document Austria	ARB_NOTES_AT_BS	ARB_AT_NOTES_PRINT
ARB_NOTE_BS_EMPTY_AT	Waste Disposal Document Austria	ARB_NOTES_AT_BS	ARB_AT_NOTES_PRINT
ARB_NOTE_BS_FULL_AT	Waste Disposal Document Austria	ARB_NOTES_AT_BS	ARB_AT_NOTES_PRINT
ARB_NOTE_BE_IVA	Waste Disposal Document Belgium	ARB_NOTE_BE_IVA	ARB_BE_NOTES_PRINT
ARB_NOTE_BE_IVA_EMPTY	Waste Disposal Document Belgium	ARB_NOTE_BE_IVA	ARB_BE_NOTES_PRINT
ARB_NOTE_BE_IVA_FULL	Waste Disposal Document Belgium	ARB_NOTE_BE_IVA	ARB_BE_NOTES_PRINT
ARB_NOTE_BF_INT	Consignment Form Germany	ARB_NOTES_INT_BF	ARB_DE_NOTES_PRINT
ARB_NOTE_BF_EMPTY_SW_INT	Consignment Form Germany	ARB_NOTES_INT_BF	ARB_DE_NOTES_PRINT
ARB_NOTE_BF_FULL_SW_INT	Consignment Form Germany	ARB_NOTES_INT_BF	ARB_DE_NOTES_PRINT
ARB_NOTE_BS_DE	Consignment Note Germany	ARB_NOTES_BS	ARB_DE_NOTES_PRINT
ARB_NOTE_BS_EMPTY_DE	Consignment Note Germany	ARB_NOTES_BS	ARB_DE_NOTES_PRINT
ARB_NOTE_BS_EMPTY_SW_DE	Consignment Note Germany	ARB_NOTES_BS	ARB_DE_NOTES_PRINT

SAP S/4HANA for waste and recycling, environmental services add-on by PROLOGA - Material Flow Management - Config Guide

	Germany		
ARB_NOTE_BS_FULL_DE	Consignment Note Germany	ARB_NOTES_BS	ARB_DE_NOTES_PRINT
ARB_NOTE_BS_FULL_SW_DE	Consignment Note Germany	ARB_NOTES_BS	ARB_DE_NOTES_PRINT
ARB_NOTE_SBS_DE	Collective Consignment Note Germany	ARB_NOTES_SBS	ARB_DE_NOTES_PRINT
ARB_NOTE_SBS_FULL_DE	Collective Consignment Note Germany	ARB_NOTES_SBS	ARB_DE_NOTES_PRINT
ARB_NOTE_SBS_FULL_SW_DE	Collective Consignment Note Germany	ARB_NOTES_SBS	ARB_DE_NOTES_PRINT
ARB_NOTE_SUES_DE	Collective Transfer Note Germany	ARB_NOTES_SUES	ARB_DE_NOTES_PRINT
ARB_NOTE_SUES_FULL_DE	Collective Transfer Note Germany	ARB_NOTES_SUES	ARB_DE_NOTES_PRINT
ARB_NOTE_SUES_FULL_SW_DE	Collective Transfer Note Germany	ARB_NOTES_SUES	ARB_DE_NOTES_PRINT
ARB_NOTE_UES_DE	Transfer Note Germany	ARB_NOTES_UES	ARB_DE_NOTES_PRINT
ARB_NOTE_UES_EMPTY_DE	Transfer Note Germany	ARB_NOTES_UES	ARB_DE_NOTES_PRINT
ARB_NOTE_UES_EMPTY_SW_DE	Transfer Note Germany	ARB_NOTES_UES	ARB_DE_NOTES_PRINT
ARB_NOTE_UES_FULL_DE	Transfer Note Germany	ARB_NOTES_UES	ARB_DE_NOTES_PRINT
ARB_NOTE_UES_FULL_SW_DE	Transfer Note Germany	ARB_NOTES_UES	ARB_DE_NOTES_PRINT
ARB_NOTE_BS_NL	Consignment Document (Begeleidingsbrief) the Netherlands	ARB_NOTES_NL_BS	ARB_NL_NOTES_PRINT
ARB_NOTE_BS_FULL_NL	Consignment Document (Begeleidingsbrief) the Netherlands	ARB_NOTES_NL_BS	ARB_NL_NOTES_PRINT
ARB_NOTE_BS_EMPTY_NL	Consignment Document (Begeleidingsbrief) the Netherlands	ARB_NOTES_NL_BS	ARB_NL_NOTES_PRINT
ARB_NOTE_BS_NO	Consignment Document Norway	ARB_NOTES_NO_BS	ARB_NO_NOTES_PRINT
ARB_NTY_INT	Notification Form	ARB_NTY_STD	ARB_NTY_PNT_INT
ARB_NTY_EMPTY_SW_INT	Notification Form	ARB_NTY_STD	ARB_NTY_PNT_INT
ARB_NTY_FULL_SW_INT	Notification Form	ARB_NTY_STD	ARB_NTY_PNT_INT
ARB_NW_AE_DE	Declaration of Acceptance Waste Approval Germany	ARB_NW_DE	ARB_DE_NW_PRINT
ARB_NW_AE_EMPTY_DE	Declaration of Acceptance Waste Approval Germany	ARB_NW_DE	ARB_DE_NW_PRINT
ARB_NW_AE_EMPTY_SW_DE	Declaration of Acceptance Waste Approval Germany	ARB_NW_DE	ARB_DE_NW_PRINT
ARB_NW_AE_FULL_DE	Declaration of Acceptance Waste Approval Germany	ARB_NW_DE	ARB_DE_NW_PRINT

SAP S/4HANA for waste and recycling, environmental services add-on by PROLOGA - Material Flow Management - Config Guide

ARB_NW_AE_FULL_SW_DE	Declaration of Acceptance Waste Approval Germany	ARB_NW_DE	ARB_DE_NW_PRINT
ARB_NW_AA_DE	Display / Request Waste Stream Germany	ARB_NW_DE	ARB_DE_NW_PRINT
ARB_NW_AA_EMPTY_DE	Display / Request Waste Stream Germany	ARB_NW_DE	ARB_DE_NW_PRINT
ARB_NW_AA_EMPTY_SW_DE	Display / Request Waste Stream Germany	ARB_NW_DE	ARB_DE_NW_PRINT
ARB_NW_AA_FULL_DE	Display / Request Waste Stream Germany	ARB_NW_DE	ARB_DE_NW_PRINT
ARB_NW_AA_FULL_SW_DE	Display / Request Waste Stream Germany	ARB_NW_DE	ARB_DE_NW_PRINT
ARB_NW_BB_DE	Authority Confirmation Waste Stream Germany	ARB_NW_DE	ARB_DE_NW_PRINT
ARB_NW_BB_EMPTY_DE	Authority Confirmation Waste Stream Germany	ARB_NW_DE	ARB_DE_NW_PRINT
ARB_NW_BB_EMPTY_SW_DE	Authority Confirmation Waste Stream Germany	ARB_NW_DE	ARB_DE_NW_PRINT
ARB_NW_BB_FULL_DE	Authority Confirmation Waste Stream Germany	ARB_NW_DE	ARB_DE_NW_PRINT
ARB_NW_BB_FULL_SW_DE	Authority Confirmation Waste Stream Germany	ARB_NW_DE	ARB_DE_NW_PRINT
ARB_NW_S1	Cover Page Waste Stream Germany	ARB_NW_DE	ARB_DE_NW_PRINT
ARB_NW_EN_DE	Single Approval Germany	ARB_NW_DE	ARB_DE_NW_PRINT
ARB_NW_EN_EMPTY_DE	Single Waste Stream Germany	ARB_NW_DE	ARB_DE_NW_PRINT
ARB_NW_EN_EMPTY_SW_DE	Single Waste Stream Germany	ARB_NW_DE	ARB_DE_NW_PRINT
ARB_NW_EN_FULL_DE	Single Waste Stream Germany	ARB_NW_DE	ARB_DE_NW_PRINT
ARB_NW_EN_FULL_SW_DE	Single Waste Stream Germany	ARB_NW_DE	ARB_DE_NW_PRINT
ARB_NW_ALL_DE	Single Waste Stream Complete Germany	ARB_NW_DE	ARB_DE_NW_PRINT
ARB_NW_ALL_EMPTY_DE	Single Waste Stream Complete Germany	ARB_NW_DE	ARB_DE_NW_PRINT
ARB_NW_ALL_EMPTY_SW_DE	Single Waste Stream Complete Germany	ARB_NW_DE	ARB_DE_NW_PRINT

SAP S/4HANA for waste and recycling, environmental services add-on by PROLOGA - Material Flow Management - Config Guide

ARB_NW_ALL_FULL_DE	Single Waste Stream Complete Germany	ARB_NW_DE	ARB_DE_NW_PRINT
ARB_NW_ALL_FULL_SW_DE	Single Waste Stream Complete Germany	ARB_NW_DE	ARB_DE_NW_PRINT
ARB_NW_VE_DE	Liability Declaration Waste Stream Germany	ARB_NW_DE	ARB_DE_NW_PRINT
ARB_NW_VE_EMPTY_DE	Liability Declaration Waste Stream Germany	ARB_NW_DE	ARB_DE_NW_PRINT
ARB_NW_VE_EMPTY_SW_DE	Liability Declaration Waste Stream Germany	ARB_NW_DE	ARB_DE_NW_PRINT
ARB_NW_VE_FULL_DE	Liability Declaration Waste Stream Germany	ARB_NW_DE	ARB_DE_NW_PRINT
ARB_NW_VE_FULL_SW_DE	Liability Declaration Waste Stream Germany	ARB_NW_DE	ARB_DE_NW_PRINT
ARB_NW_EN_NL	Waste Stream (Omschrijvingsformulier) the Netherlands	ARB_NW_NL	ARB_NL_NW_PRINT
ARB_NW_EN_FULL_NL	Waste Stream (Omschrijvingsformulier) the Netherlands	ARB_NW_NL	ARB_NL_NW_PRINT
ARB_NW_EN_EMPTY_NL	Waste Stream (Omschrijvingsformulier) the Netherlands	ARB_NW_NL	ARB_NL_NW_PRINT

Table 25: Overview Print forms

3 Implementations to combine with the application *Operational Planning*

In order to link the application *Material Flow Management* to the application *Operational Planning* several implementations are available which can be activated in the transaction (/WATP/BASE_OBJCONFIG).

The implementations are in the tree in the path:



Route planning <--> *Legal Requirements* → *Implementations* → *ARB customization in route planning* (ARB_TP).

Implementation	Function	Nodes in the tree (technical name)	Name of Implementation in the tree
ARB_TP_BASE	General basic functionality. Activate this implementation, if you want to use the material flow management component.	ARB_TP	General settings
ARB_TP_OPERATIVE	Activates the display of data from consignment documents to order items in the operational "Route Planning" (/WATP/TP_SHORTTERM). The following characteristics will be displayed there: - Consignment Document Number, - Producer, - Transporter - Disposer Data Activate this implementation, if you want to use the material flow management component within operative Route Planning.	ARB_TP	ARB data in operational route planning

Table 26: Implementation SAP® Dispatching & Planning by PROLOGA

4 Basic Configuration in Transaction (/WATP/ARB_CONFIG)

After the implementations were selected for the material flow management component, it needs to be configured. In the transaction (/WATP/ARB_CONFIG) the basic configurations are made. The activated material flow management component works with these configurations in the system. The configuration is built in tree form. In each tree node, various functions can be configured. Select the respective nodes

in the tree and use the available functions for creating  and editing  of settings. The possible settings in the nodes of the tree are described below.

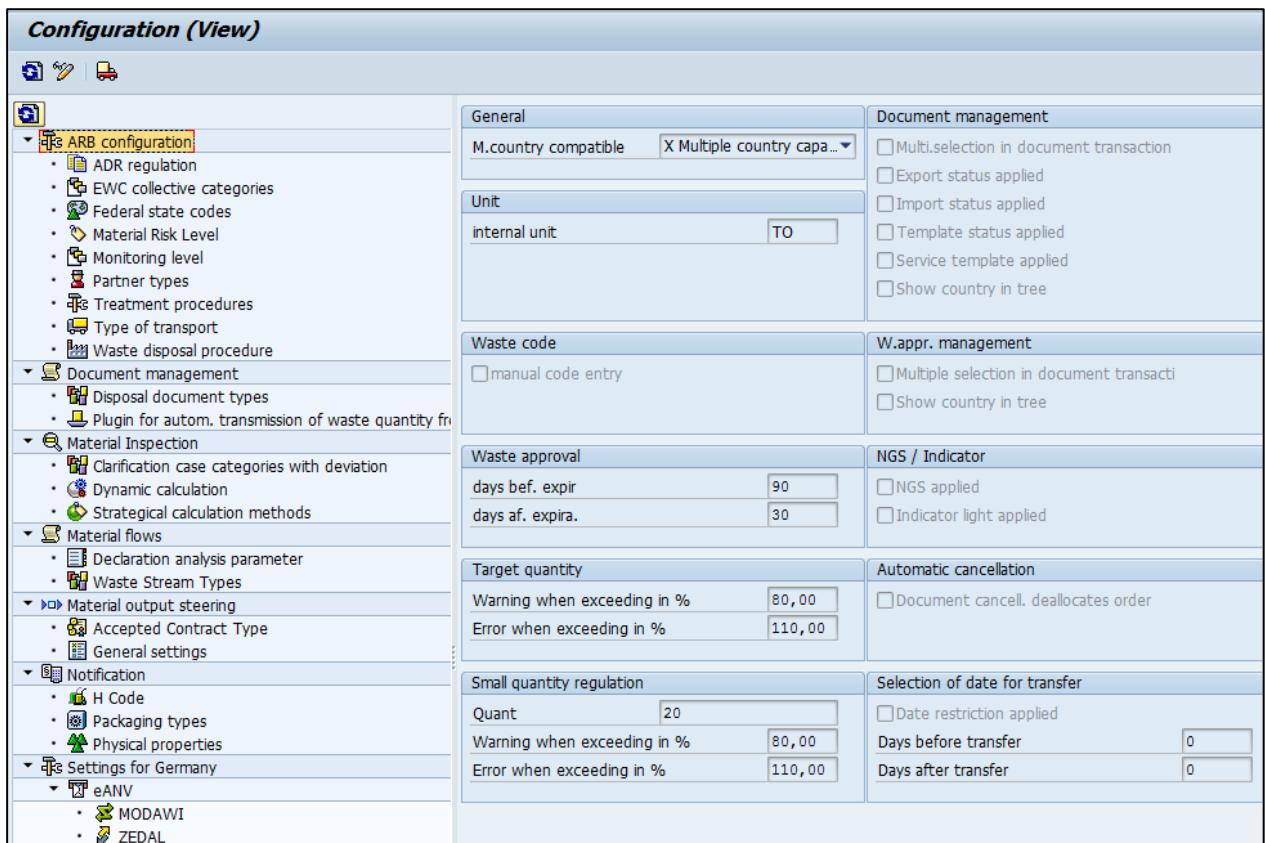


Figure 12: Material Flow Management Configuration in Transaction /WATP/ARB_CONFIG

4.1 General Settings of Material Flow Management (ARB Configuration)

4.1.1 Multi-country compatible

Activate this option In order to use more than 1 country template in parallel.

4.1.2 Unit – Internal Unit


Define the quantity unit which is to be used to post quantity statistics within the material flow management component. This setting applies across countries for all activated waste legislation in the system.

4.1.3 Waste code – manual code entry


Activate this feature if you want to maintain your own EWC code in the system. Without enabling this function a EWC code is automatically assembled from the main group and the subgroup.

4.1.4 Waste Approval/Waste Stream

Days before expiration

Here you can define a time value in which the material flow/ waste stream in the waste approval management (/WATP/ARB_NW) should be presented with the symbol . The icon tells you that the validity of this material flow/ waste stream expires within the defined time specification.

Days after expiration

Here you can define a time value in which the material flow/ waste stream in the waste approval management (/WATP/ARB_NW) should be presented with the symbol . The icon tells you that the validity of this material flow/ waste stream has already expired. material flow/ waste stream may not be used for order entry, weighing and confirmation.

4.1.5 Target quantity

Warning when exceeding in %

This feature is only available for German Templates. Here you can define a threshold at which a warning message should appear at the order entry, the weighing process or the confirmation. This warning message should tell you the achievement of the defined concept quantity of this material flow/ waste stream. After the message it is possible to proceed. The concept quantity is defined in the material flow/ waste stream itself.

Error when exceeding in %

This feature is only available for German Templates. Here you can define a threshold at which an error message should appear at the order entry, the weighing process or the confirmation. This error message should tell you the achievement of the defined concept quantity of this material flow/ waste stream. The error message leads to the termination of the executed function. The concept quantity is defined in the material flow/ waste stream itself.

4.1.6 Small quantity regulation for Single German Waste Stream Templates

Quant

In this field you can define the limit value of the small quantities regulation.

Warning when exceeding in %

This feature is only available for German Templates. Here you can define a threshold at which a warning message should appear at the order entry, the weighing process or the confirmation. This warning message should tell you the achievement of the defined concept quantity of this material flow/ waste stream. After the message it is possible to proceed. The small quantity regulation is defined in the material flow/ waste stream itself.

Error when exceeding in %

This feature is only available for German Templates. Here you can define a threshold at which an error message should appear at the order entry, the weighing process or the confirmation. This error message should tell you the achievement of the defined concept quantity of this material flow/ waste stream. The error message leads to the termination of the executed function.

4.1.7 Document management

Multiple selections in document transaction

Activate this feature to processed several disposal documents within the disposal document management (/WATP/ARB_NOTES) simultaneously. This function does not relate to the data given in the disposal documents. Thus it is given the opportunity to change the status of several disposal documents simultaneously.

Export status applied

Activate this feature when the status EXPORT should be available in the disposal document management (/WATP/ARB_NOTES).

Import status applied

Activate this feature when the status IMPORT should be available in the disposal document management (/WATP/ARB_NOTES).

Template status applied

Activate this feature when the status TEMPLATE should be available in the disposal document management (/WATP/ARB_NOTES). This feature should be used when you create the disposal document manually without a reference to a material flow/waste stream.

Service template applied

Activate this feature when the status SERVICE TEMPLATE should be available in the disposal document management (/WATP/ARB_NOTES). This feature should be used if you want to create disposal documents in order creation automatically and for this, you want to use the option "Note Template" as disposal document template.

Show country in tree

Activate this function, if you have assigned the disposal document types to the associated country (see chapter 4.1.12 – Disposal Document Type) and the disposal documents should be displayed below the associated country knot within the navigation tree of the disposal document management (transaction /WATP/ARB_NOTES).

4.1.8 Waste approval management

Multiple selections in disposal document transaction

Activate the multi selection of material flows/waste streams in *waste approval management* (transaction /WATP/ARB_NW).

Show country in tree

Activate this function, if you have assigned the material flows/waste streams types to the associated country (see chapter 4.7.3– Waste Stream Types) and the material flows/waste streams should be displayed below the associated country knot within the navigation tree of the waste management (transaction /WATP/ARB_NW).

4.1.9 NGS/ Indicator

NGS is used

Activate the NGS- functionalities for German Templates.

Indicator light is used

This functionality enables the red, yellow and green traffic light symbol at waste disposal documents in the disposal documents management. There is the possibility to define when each traffic light symbol is displayed there. This works about BAdI.

4.1.10 Automatic cancellation

Document cancellation de-allocates order

This functionality activates the automatic cancellation of the connection of a disposal document to a disposal order item. The disposal document is set to the status *CANCELLED* in the disposal document management (*/WATP/ARB_NOTES*).

4.1.11 Selection of date for transfer

Date restriction applied

Activate this feature if you want to pre-assign the entry filter in the disposal document management (*/WATP/ARB_NOTES*) with a date interval for the acceptance date of the waste transporter. Thus there are only disposal documents shown which are in the specified date interval.

Days before transfer

Enter the start date, which is calculated depending on the system date to the date of the acceptance date interval.

Days after transfer

Enter the end date, which is calculated depending on the system date to the date of the acceptance date interval.

4.1.12 ADR-regulations

Define the special regulations for ADR-catalog. These special regulations are assigned to the UN-catalog (*/WATP/ARB_ADRUNCA*).

4.1.13 EWC-Collective categories

Define the collective categories which are used in the system, for example waste oils. In EWC-Catalog (*/WATP/ARB_AVV*), these collective categories will be assigned to the EWC-keys.

Collective Category

Define the number of collective category, for example: 1.

Description

Define a description of the collective category, for example: collective category waste oil 1)

4.1.14 Federal State Codes

Here you can define the federal state codes with following parameters:

Country

Country key (e.g. US = USA)

Region

The numeric value of the federal state

Description

The name of the federal state

Code

Code of region in waste legislation

4.1.15 Material Risk Level

Here the standard material risk level can be defined which will be used for the dynamic calculation of material inspection intervals

Risk Level

Define the potential risk which could exist for materials. The risk level can be created either numerical or alphanumeric values.

Order

Define the sequence of the risk levels with a numeric value.

Description

Define description for the risk level.

4.1.16 Monitoring Level for Waste Stream Templates

Here you can define the required supervision for the waste to be disposed. In Germany, GEF stands for hazardous waste and NGEF, for non-hazardous waste. The monitoring level will apply in the EWC-Catalog (/WATP/ARB_AVV).

The following settings must be defined per monitoring level:

Categorization

Here you can define a short name (max. 5 signs) for the monitoring level.

Description

Here you can define a description for the monitoring level. This is shown in material flow management catalogs such as EWC- catalog and search helps.

Approval optional

Here you can define whether the use of material flow/waste stream at this monitoring level should be optional or mandatory.

Tab "Available waste appr. Types"

Define the material flow/waste stream types here which are to be used for this monitoring level. In advance the material flow/waste stream types must be defined. In this setting a plausibility check at the service frequency creation and weighing procedure takes place.

4.1.17 Partner Types

Before creating the partner types the identification types of the *SAP Business Partner* are required for the mapping to the partner types of the material flow management component. They have to be created in the transaction SPRO.

Path: SAP Customizing Implementation Guide → Cross-Application Components → SAP-Business Partner → Business Partner → Basic Settings → Identification Numbers

Create here the partner types required in the material flow management component and assign the defined identification types to these partner types. The functions in the material flow management component are working with these internal partner types. Some partner types are country-specific needed. The country-specific usage is shown by indicating the country in the following table.

Partner Type	Function of the Partner Type	Deposit at the SAP - Object	Country
ERZ	Identification number for Waste Generator	Business Partner, Waste Generation Side	DE, BE, NL, AU, AT, NO
BEF	Identification number for Waste Transporter	Business Partner	DE, BE, NL, AU, AT, NO
ENT	Identification number for Waste Disposer	Business Partner, Disposal Facility	DE, BE, NL, AU, AT, NO
BVE	Identification number for authorized Waste Generator	Business Partner	DE
AVST	First 5 Signs of the Waste Code	Disposal Facility	NL
BEMID	Identification number of the Bemiddelaar	Business Partner	NL
HAND	Identification number of the Handelaar	Business Partner	NL
VIHB	VIHB Number of the Waste Transporter	Business Partner	NL

Table 27: Partner Types

Define a description of the Partner Type in the field *Description*.

The partner types are used to deposit the identification numbers:

- Business Partner (Transaction: *BP* → *Tab: Identification*)
- Waste Generation Side (Transaction: */WATP/ARB_SRCPLACE*)
- Disposal Facility (Transaction: *EWAELO4*)

Please note that for the use of eANV in German waste legislation, additional partner types are required.

Country allocation

Here you can assign which country is associated with the partner type. This is useful if you have several country-specific material flow templates in your system. If the partner type is assigned to a specific country, then only material flow/waste stream types and disposal document types with the equal country assignment can be used in combination with this partner type.

4.1.18 Treatment procedures

Define the types of treatment of waste after entrance to a waste disposal facility with a particular disposal method (recycling or disposal).

Treatment procedures

Here you can define the code of the treatment process, for example R1, D1)

Name

Define here the description of the treatment process.

GTIN

Global Trade Item Number

The GTIN is an identification number which uniquely identifies products and packages worldwide.

The GTIN is donated by the G1.

The Global Trade Item Number (GTIN) is an identification number which is managed and granted by the GS1. It serves identifying products and packages worldwide. The GTIN acts as a key to access the

product information stored in databases, such as the name, weight, package size or product group. Normally the GTIN includes 13 digits. For small items where the long number cannot be accommodated, it is an 8-digit short number.

For the award of the GS1 organization each country is responsible.

Waste disposal procedure

Assign the treatment procedures to the appropriate waste disposal procedure. The waste disposal procedure must be defined previously in the corresponding node.

Notes/Comments

Define here specific information for the treatment process.

4.1.19 Types of transport

Here you can define the transport routes, which are used in the system.

Type of transport

Define the name of the transport path.

Name

Define the description of the transport path.

GTIN

Global Trade Item Number

The GTIN is an identification number, which uniquely identified a product and packages worldwide.

The GTIN is donated by the G1.

The GTIN acts as a key to access the product information stored in databases, such as the name, weight, package size or product group. Normally, the GTIN includes 13 points. For small items, on which the long number cannot be accommodated, is an 8-digit short number.

For the award of the GS1 organization in each country is responsible.

Notes/Comments

Define here specific information, for the transport path.

4.1.20 Waste disposal procedure

Define the two waste disposal procedures which are used in the system and assign them to the internal modes of treatment of waste (recycling or disposal). It must be exactly one assignment for recovery and one for disposal.

4.2 Document management

4.2.1 Disposal Document Type

Define the country-specific disposal document types required for the material flow management functionality in the disposal document management (*/WATP/ARB_NOTES*). If you use the material flow management functionality of a certain country template you define the intended disposal document type for this as described in the following.

The following settings must be taken in the definition:

- Disposal Document Type
- Object Type
- Form Name

Define the disposal document types, object types and forms according to the available templates in the following table:

Disposal Document Type	Country Template	Object Type	Form Name
------------------------	------------------	-------------	-----------

BS_DE	Consignment Note (Germany)	ARB_NOTE_BS	/WATP/ARB_NOTES_BS_DE
UES_DE	Transfer Note (Germany)	ARB_NOTE_UES	/WATP/ARB_NOTES_UES_DE
SBS_DE	Collective Consignment Note (Germany)	ARB_NOTE_SBS	/WATP/ARB_NOTES_SBS_DE
SUES_DE	Collective Transfer Note (Germany)	ARB_NOTE_SUES	/WATP/ARB_NOTES_SUES_DE
BS_AT	Consignment Note to 2012 (Austria)	ARB_NOTE_AT_BS	/WATP/ARB_NOTES_BS_AT
BS_AT2012	Consignment Note from 2012 (Austria)	ARB_NOTE_AT_BS2012	/WATP/ARB_NOTES_BS_AT
BS_NL	Consignment Note (the Netherlands)	ARB_NOTE_NL_BS	/WATP/ARB_NOTES_BS_NL
BS_NO	Consignment Note (Norway)	ARB_NOTE_NO_BS	/WATP/ARB_NOTES_BS_NO
IVA_BE	Consignment Note (Belgium)	ARB_NOTE_BE_IVA	
BF_INT	Notification	ARB_NOTE_INT_BF	

Table 28: Disposal Document Type



Every object type can be used once in the system.

Furthermore the following settings per disposal document type are to be defined:

Disposal document type

Here you can define whether the disposal document type is used as a collective note.

This adjustment is made only for the German Template. For the German Template the disposal document types *SBS_DE* and *SUES_DE* are provided with this code. For other countries this option is not used.

Description

Define here the description of the disposal document type. Among other things, this description is also used in the representation of the note management (*/WATP/ARB_NOTES*). Here you can define a country-specific name for the consignment document.

Sequence

Define the sequence (numbering) of the representation of the disposal document type in the disposal document management. The disposal document type with the lowest number is displayed in the disposal document management (*/WATP/ARB_NOTES*) at the top.

Digital Signature

Define the participation of the disposal document type at eANV in this area. This marking is only relevant for the German document types (for more information, see the document: *SAP_eANV_Modawi_Integration_by_PROLOGA_eANV_Cofigurationguide.pdf*)

Country allocation

Here you can assign which country is associated with the disposal document type. This is useful if you have several country-specific material flows in your system. If the disposal document type is assigned to a specific country, then only material flow/waste stream types with the equal country assignment can be used in combination with this disposal document type.

4.3 Settings for the Austrian Template – Knot Legal Requirements (Austria)

4.3.1 Link-end-type indicator

It's a functionality which represents an indicator for a third-party business.

4.3.2 Quantification method

Quantification method

Key which identifies the quantification method.

Name

Define the description for quantification method. (Calculation, Estimation)

GTIN

The GTIN is an identification number, which uniquely identified a product and packages worldwide.

Default

Mark the button, if the settings are used as default.

Notes/comments

Define here remarks to the quantification methods.

4.3.3 Specifications of the AT Norm Catalog

The AT-Norm catalog is the waste catalog of Austria. In the application *Material Flow Management* this is maintained in the transaction */WATP/ARB_AVK*.

In this transaction additional specifications are defined which are assigned to the AT-Norm catalog.

Pre-requisite for the possible definitions here is to enable the implementation of the Austrian Template in the transaction */WATP/BASE_OBJCONFIG*.

4.3.3.1 General

Waste code

Waste code as in /WATP/ARB_AVV.

Specification

Define here the number of the specification (max. 2 signs, for example: 01).

Short term

Define here the short description of the specification.

Name

Define here the description of the specification (for example: treated wood, pollution-free)

Icon

Shows the icon which displays the status.

Categorization

Here you can define the required monitoring level for the waste to be disposed. (*/WATP/ARB_AVV*)

GTIN

The Global Trade Identification Number is a number which uniquely identifies products and packages worldwide.

Notes/comments

Define here remarks to the specification.

Note on specification

Define here additional remarks to the specification.

If hazardous, the following collective document

If hazardous waste, then define the waste as other AT-Norm catalog entry.

If non-hazardous, the following collective document

If non-hazardous waste, then define the waste as other AT-Norm catalog entry.

4.3.3.2 Material assignment

A material can be clearly assigned to a single entry.

Material

You can maintain a material.

Material short description

The description from material master data.

4.3.3.3 EWC catalog assignment

You can assign the material to EWC-Catalog.

Applied

Ability to restrict all associated EWC codes for only owner-occupied EWC codes. If this flag is set for this EWC code, it will also appear in the search aids and can be used. It should be checked at least 1 EWC code per Ö-Norm.

EWC-Code

The different types of waste are fully defined by a six-digit code. The EWC code is created from the EWC group code (or in case of several hierarchy levels from all group codes) and the EWC catalog code.

Description

The description of the EWC-Catalog entry.

Hazardous in recycling

Hazardous in disposal

4.3.4 Waste movement types

Sales document type

The sales document type determines how the system processes the sales document. For example, depending on the sales document type, the system determines which screens to present and which data to ask you for.

GTIN

The GTIN is an identification number, which uniquely identified a product and packages worldwide.

Notes/comments

Define here remarks to the way of waste movement.

4.4 Settings of the Belgian Template - Knot Legal Requirements (Belgium)

Define here additional parameters for the Belgian Template.

Pre-requisite for the possible definitions here is to enable the implementation of the Belgian Template in the transaction (/WATP/BASE_OBJCONFIG).

4.4.1 Pre-treatments for waste

Define the need for waste treatment types in Belgium. The types of waste preparation are selectable in transportation documents in the disposal document management (/WATP/ARB_NOTES).

Take here the following definitions:

Waste pre-treatment	Description
01	Classify
02	Other Preparations
03	Reuse
04	Recycling
05	Composting
06	Incinerate und Deposit

Table 29: Waste Pre-Treatment for Belgian Template

There is the possibility to specify additional information in the field remarks/annotations.

4.4.2 Note types

Define the types of transportation documents needed for Belgium. These types are selectable in Belgian transport documents in the note management (/WATP/ARB_NOTES).

Take here the following definitions:

Note Type	Designation	Remarks/Observations
ABFSAM	Waste Collection	Note type for Waste Collection
ANLAUS	Plant Output	Note type for Plant Output
ANLEIN	Plant Input	Note type for Plant Input

Table 30: Note Type Belgium

4.5 Settings for Dutch Template - Knot Legal Requirements (Netherlands)

4.5.1 EWC Entries in the special regulation procedure

Here you must define the EWC entries which will be needed in case of special regulation procedure for the Dutch Template. Only the materials which are assigned to the EWC codes can be assigned to the material flow type NW NL S.

4.6 Material Inspection

4.6.1 General Settings

Automatic Completion

Indicates after how many days an inspection is to be closed automatically.

Retroactive Re-Calculation

Indicates how many days to be included retroactively in a recalculation.

Upfront Calculation

Indicates for how many days in advance the material inspection to take place

Document Type Outbound Delivery

Indicates which document type should be used for outbound deliveries.

4.6.2 Clarification case categories with deviation

Here a selection of the stored clarification case categories will be made.

Case Category

ID of case category

Use Note

Manually maintainable note to the case category

4.6.3 Dynamic Calculation

Here rules can be defined for the dynamic calculation which can be assigned in the material master on tab *Material Inspection*.

Waste Disposal Facility

Waste disposal facility where the inspection has to take place

Risk Level

Selection and input of the created risk levels

Inspection Interval Deliveries

Count of inspection intervals in order to define how often an inspection has to take place.

Lower Risk Level

Defines the risk level which is used if the inspections were positive within the inspection count and the allowed deviations.

Inspections for Decrease Risk Level

Count of inspections, which are necessary to decrease the risk level in combination with allowed deviations.

Deviations

Count of deviations, which are allowed.

Higher Risk Level

Defines the risk level which is used if the inspections were negative within the inspection count and the not allowed deviations.

Inspections for Increase Risk Level

Count of inspections, which are necessary to increase the risk level in combination with the not allowed deviations.

Deviations

Count of deviations which are not allowed.

4.6.4 Strategic Calculating Methods

Here rules can be defined for the strategic calculation which can be assigned in the material master on tab *Material Inspection*.

Strategy Number

Key which identify a strategy clearly

Description

Define a description for the strategy.

Strategy Type

Defines how the inspections have to take place.

- No check
- E – Every N deliveries
- F – The first N deliveries
- T – Every N tons

Quantity of Deliveries

Defines the count of deliveries in which the inspections have to take place.

Delivered Quantity in Tons

Defines the amount within the inspections have to take place.

4.7 Material Flows

4.7.1 General Settings

Here you can define the general settings for the Waste Approval/Waste Stream management (/WATP/ARB_NW) which is used in the system.

Waste Approval/Waste Stream management – Disposal papers do not show

Define here by setting the hook that the disposal papers in the Waste Approval/Waste Stream management (/WATP/ARB_NW) are not displayed.

Waste Approval/Waste Stream management – declaration analyzes do not show

Define here by setting the hook that the disposal papers in the Waste Approval/Waste Stream management (/WATP/ARB_NW) are not displayed.

Hidden disposal documents status

Define here disposal document status which is not displayed in the Waste Approval/Waste Stream management (/WATP/ARB_NW).

4.7.2 Declaration analysis parameter

Define the parameters for the declaration analysis in this area.

Sample parameters

Select a parameter which was previously defined in Customizing in transaction SPRO.

Path: *SAP Customizing Configuration Guide* → *SAP Utilities* → *Waste Management* → *Waste Disposal Facilities* → *Basic Data* → *Define Sample Parameter(s)*.

Description

Here you can define a description for the sample parameters. This description is used in the transaction (/WATP/ARB_DECLANLS) as a field description for the sample parameters.

4.7.3 Waste Stream Types (Material Flows)

Define here the waste stream types for the country-specific templates which can be used in the Waste Approval/Waste Stream management (/WATP/ARB_NW).

The following settings have to be defined for each Waste Approval/Waste Stream template:

Waste Streams Type	Country Template	Object type	Collector
EN_DE	Waste Stream Germany	ARB_NW_DE	
SN_DE	Collective Waste Stream Germany	ARB_NW_DE	X
VN_DE	Simplified Waste Stream Germany)	ARB_NW_DE	
VS_DE	Simplified Collective Waste Stream Germany	ARB_NW_DE	X
NW_AT	Waste Stream Austria	ARB_NW_AT	
NW_NL	Waste Stream Netherland	ARB_NW_NL	
NW_AU	Waste Stream Australia	ARB_NW_AU	

Table 31: Waste Approval/Waste Stream Types

Furthermore the following settings have to be defined for each Waste Approval/Waste Stream type:

Description

Define here the description of Waste Approval/Waste Stream type. Among others this description is used in the representation of the Waste Approval/Waste Stream management (/WATP/ARB_NW). Here you can define a country-specific name for the Waste Stream/waste stream.

Sequence

Define the sequence (numbering) of the representation of the Waste Approval/Waste Stream types in the Waste Approval/Waste Stream management.



Tab Available Document Types

Define the types of Waste Approval/Waste Stream which have to be used for a certain monitoring level for the Waste Approval/Waste Stream types. The monitoring level is defined in the EWC- Catalog (/WATP/ARB_AVV) and specified over the EWC code in the process at various points. The disposal method is determined and checked against the settings defined here.

Country allocation

Here you can assign which country is associated with the Waste Approval/Waste Stream type. This is useful if you have several country-specific material flows in your system. If the Waste Approval/Waste Stream type is assigned to a specific country, then only disposal document types with the equal country assignment can be used in combination with this Waste Approval/Waste Stream type.

Proceed with the definition as follows:

1. Select the Waste Approval/Waste Stream type to be edited and change into edit mode with the  button
2. Open the tab *available disp. doc.types* and push the button .

3. Now define the monitoring level and select the Waste Approval/Waste Stream type which is used at this level. It is possible to assign various types of Waste Approval/Waste Stream per monitoring level.
4. Define also optional on the hook, if the Waste Approval/Waste Stream type has to be defined at the monitoring level or not.

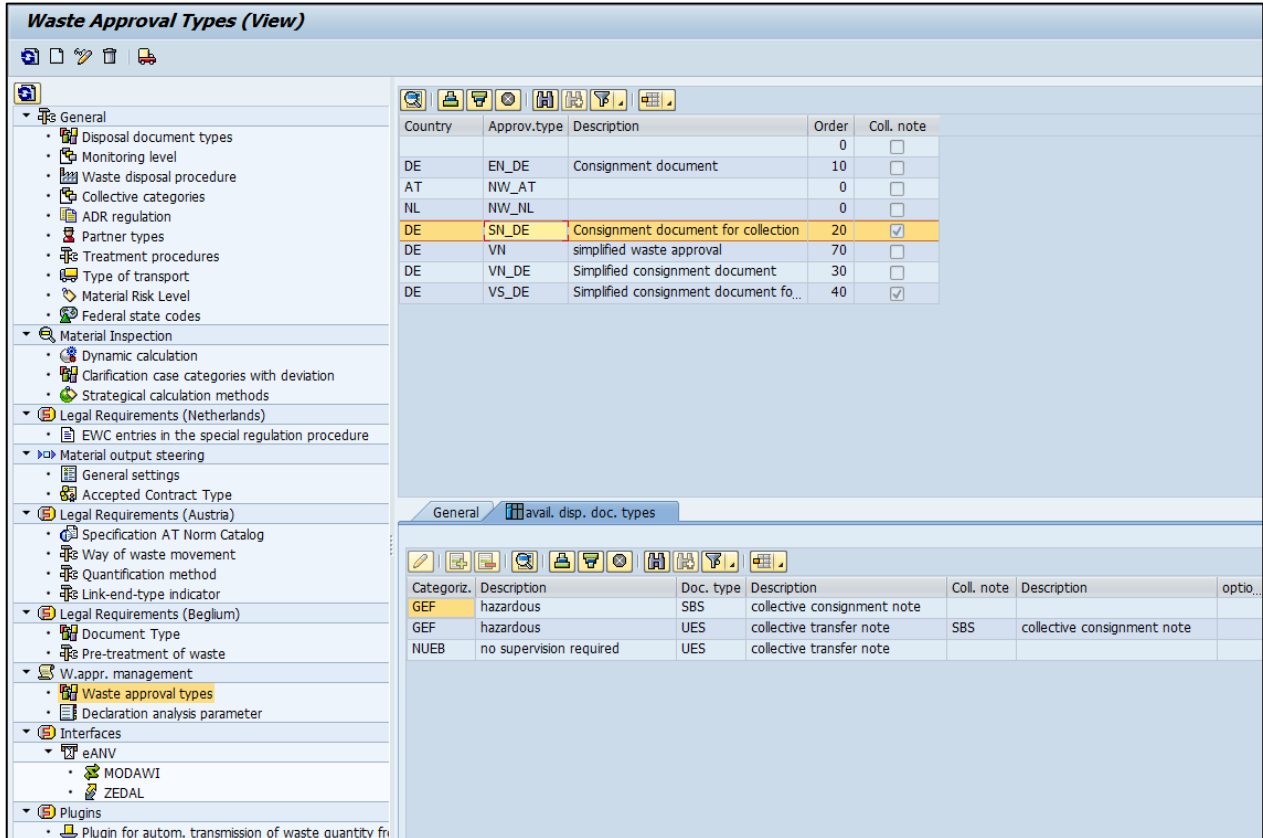


Figure 13: Setting for Collective Waste Approval/Waste Stream

In this case additionally to define the document type, the document type for the collection consignment note in the field collector will be defined.

4.8 Material Output Steering

4.8.1 Accepted Contract Types

Here can be defined which contract types are accepted for output steering.

4.8.2 General Settings

Following settings can be made:

Standard Currency

Standard currency for the use within the output steering

Standard Weight Format

Standard weight format for the use of output steering (e.g. tons)

Order type for Waste Disposal Facility

Specifies how a weighing procedure or a general cargo entry has to be copied in a sales document.

4.9 Notification

Define the parameters for the notification.

Pre-requisite for the possible definitions here is to enable the implementation of the notification in transaction (/WATP/BASE_OBJCONFIG).

4.9.1 H-Code

Define here the H-codes (Hazard Statements) for the notification.

Define here the H-codes of the waste to specify in the notification form in transaction /WATP/ARB_NTY. The codes defined in the notification (/ N / WATP / ARB_NTY) specified in the notification form.

H-Code

Define here the H-Code.

Name

Define here a description for the H-Code.

Notes/comments

Define here additional remarks for the H-Code.

4.9.2 Packaging Types

Define the types of packaging, in which waste is transported to specify in the notification form in the transaction (/WATP/ARB_NTY).

Packaging Type

Define here the type of package.

Name

Define here a description for the packaging type.

Notes/comments

Define here additional remarks for the packaging type.

4.9.3 Physical properties

Define the physical characteristics of the waste to specify in the notification form in the transaction (/WATP/ARB_NTY).

Physical property

Define the physical characteristic (for example: fixed, liquid...).

Name

Define here the description of the physical characteristic.

Notes/comments

Define here the additional remarks for the physical characteristic.

5 Configuration for the use of Material Flow Management in combination with SD-Contracts

Define the transfer of property values from the service product configuration in SD-contracts in the service frequency.

By using this function, fields to be filled can be automatically filled with values of the associated contract in the service frequency. This function can also be used for fields that are not required by the material flow management component.

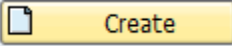
For the material flow management, for example the amount of scheduled services, the EWC code, the treatment (disposal or recycling) and waste materials are relevant.

The following description is an example. At this, the basic operation is described. The functions have to be adapted to the characteristics of each SAP system.

Pre-requisite:

Activate at the enhancement spot *service frequency enhancements (ISU_WA_SERVICE_FREQ)* the extension implementation: *implementation ISU_WA_SERVICE_FREQ (/WATP/CS_BADISERVFRE)*.

Also start the transaction: *CMOD*

Create the project ZSERVFRQ with the button . Project and short text in the customer namespace is user definable, ZSERVFRQ is used in this description as an example. The project should begin with Z or Y.

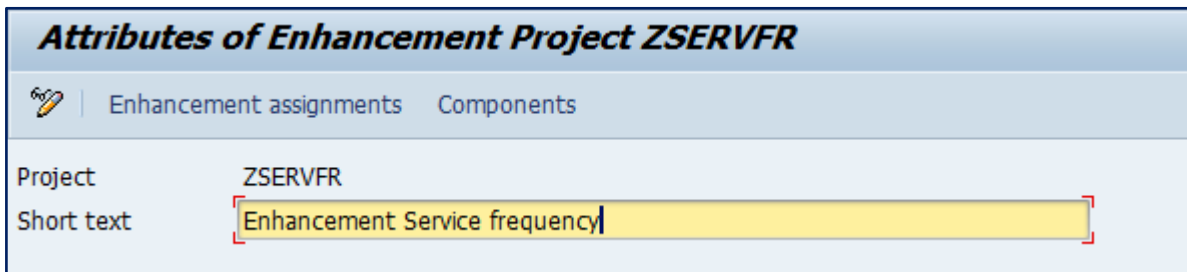
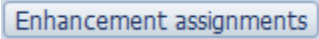


Figure 14: Define short description of the project

Push the button .

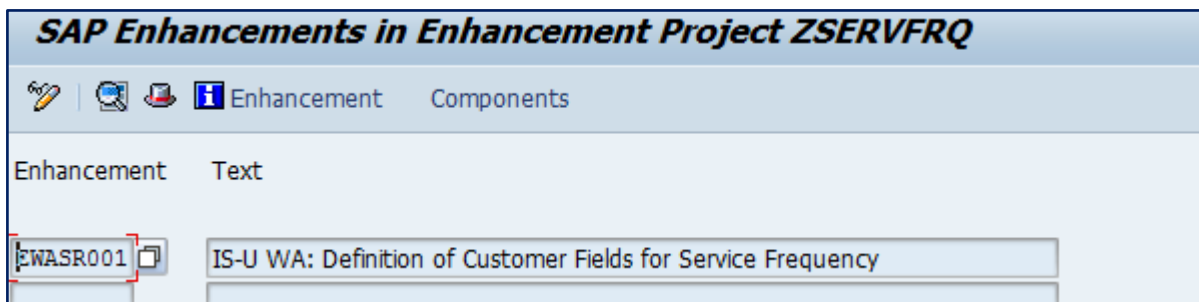


Figure 15: Assignment of an enhancement

Assign the enhancements *EWASR001* to the project.

Afterwards push the button *Components*.

Display ZSERVFRQ						
Enhancement assignments Enhancement						
Project				ZSERVFRQ		
Enhancement	Impl	Exp	EWASR001 IS-U WA: Definition of Customer Fields for Service Frequency			
Function exit	✓	■	EXIT_SAPLEEWA_MD_RO_004			
	✓	■	EXIT_SAPLEEWA_MD_RO_005			
	✓	■	EXIT_SAPLEEWA_MD_RO_006			
	✓	■	EXIT_SAPLEEWA_MD_RO_007			
	✓	■	EXIT_SAPLEEWA_MD_RO_008			
	✓	■	EXIT_SAPLEEWA_MD_RO_009			
Screen exit	✓	■	SAPLEEWA_MD_RO	0102	SUBCUST	SAPLEEWAROBJ 0100
	✓	■	SAPLEEWA_MD_RO	0130	SERVCUST	SAPLEEWAROBJ 0200
Include tables	✓	■	CI_EWAOBJ			
			CI_EWAOBJH			

Figure 16: Enhancement from function exit

Memorize the function exits from here: *EXIT_SAPLEEWA_MD_RO_004*, *EXIT_SAPLEEWA_MD_RO_006*, *EXIT_SAPLEEWA_MD_RO_007* and *EXIT_SAPLEEWA_MD_RO_009*.

Take the following includes in the function exit:

Function exit	Include
EXIT_SAPLEEWA_MD_RO_004	include /WATP/CS_INC_ZXEWAROBJU04.
EXIT_SAPLEEWA_MD_RO_006	include /WATP/CS_INC_ZXEWAROBJU06.
EXIT_SAPLEEWA_MD_RO_007	include /WATP/CS_INC_ZXEWAROBJU03.
EXIT_SAPLEEWA_MD_RO_009	include /WATP/CS_INC_ZXEWAROBJU08.

Table 32: Function exits for SD-contracts

As an example the enhancement for the function exits *EXIT_SAPLEEWA_MD_RO_004*:

```

ABAP Editor: Change Include ZXEWAROBJU04
Include ZXEWAROBJU04 Active (Revised)
*&-----*
*& Include      ZXEWAROBJU04                *
*&-----*

include /WATP/CS_INC_ZXEWAROBJU04.
    
```

Figure 17: Example expression of an Include

Save and activate the project.

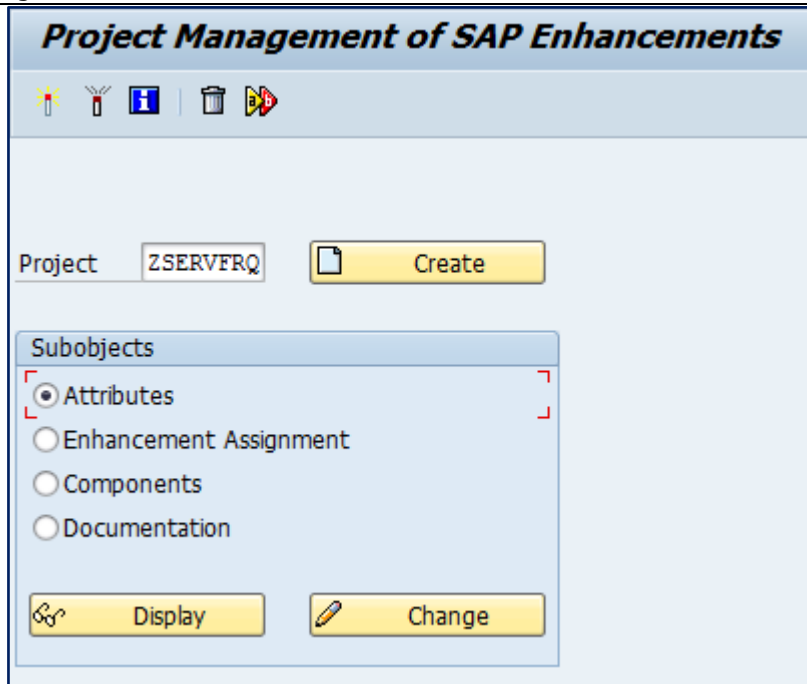


Figure 18: Activate the project

Definition of the characteristic transfer:
 Use the transaction /WATP/CS_CUST01 for the definition.

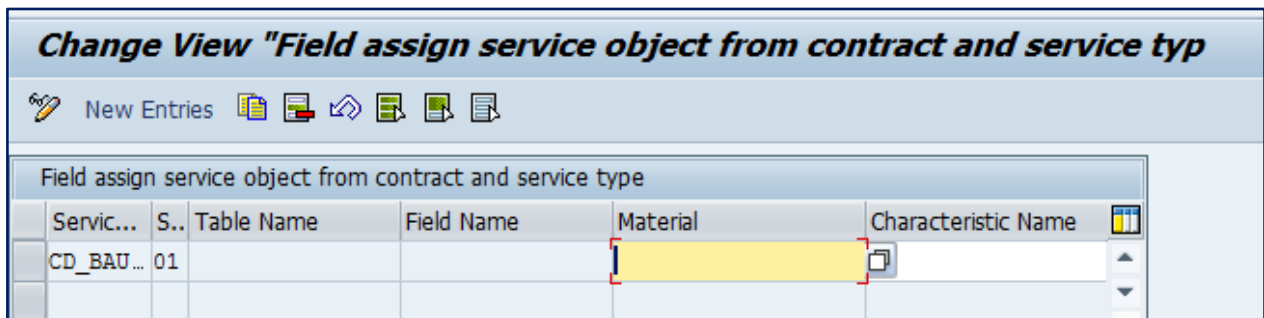


Figure 19: Transaction: /WATP/CS_CUST01

Service object

Define here the service product from which a characteristic should be transferred into the service frequency. The entries are based on the used service products in your system.

Activity type

Define here the activity types, in which a characteristic of the service product configuration will be transferred to the service frequency.

If no activity type is defined a transfer always takes place. The entries are based on the activity types used in your system.

Table name:

Define here the target table or target structure of the value transfer. The value from the service product is transferred. The following values are possible:

EWAOBJ – Service frequency head

Over this entry it is defined that a characteristic is transmitted in the field service frequency head.

EWAOBJH – Service frequency time slice

Over this entry it is defined that a characteristic is transmitted in the field service frequency time slice.

EWAOBJD – Additional entry to bind the transaction ELOC

Use this configuration if you use the transaction *ELOC*. For the used entries for *EWAOBJ* and *EWAOBJH*, an additional entry *EWAOBJD* has to be generated so that the transmitted data are visible on the screen (Dynpro).

Field name:

Define here the target field of the service frequency for the property value of the service product. The available fields of the tables above can be chosen.

Material:

Define the material of the service product for which the settings should be valid.

Property name:

Define the property of the material from the value that should be transferred in the service frequency.

Only if initial:

Define, if the transfer always should be done or only, when the target field is not filled (initial) yet.

6 Enhancement of the Material for Material Inspection and Output Steering

For the use of material inspection and output steering the material is enhanced with other views. For this material data enhancement following steps need be done.

Material enhancement in /WATP/BASE_OBJCONFIG

Activate the sets for material inspection, output steering and risk level (see following chapters).

6.1 Object Navigator

Transaction: SE80

In advance it must be checked whether the BAdI is activated which is responsible for the replacement of the tab.

Therefore you open the transaction SE80 and search for the package "/WATP/ARB_MM". Under *enhancements* → *Classic BAdIs (Impl.)* you find the BAdI "/WATP/ARB_MM". Is the BAdI name written blue it is inactive and has to be activated manually. For this purpose you have to go to the edit mode and activate this BAdI. If this possibility does not exist please navigate forward to the Definition name "BADI_MATERIAL_OD". Afterwards you choose in the menu bar Implementation→ Overview. Select the BAdI "/WATP/ARB_MM" and click on "change" (F6). Then you can activate the BAdI.

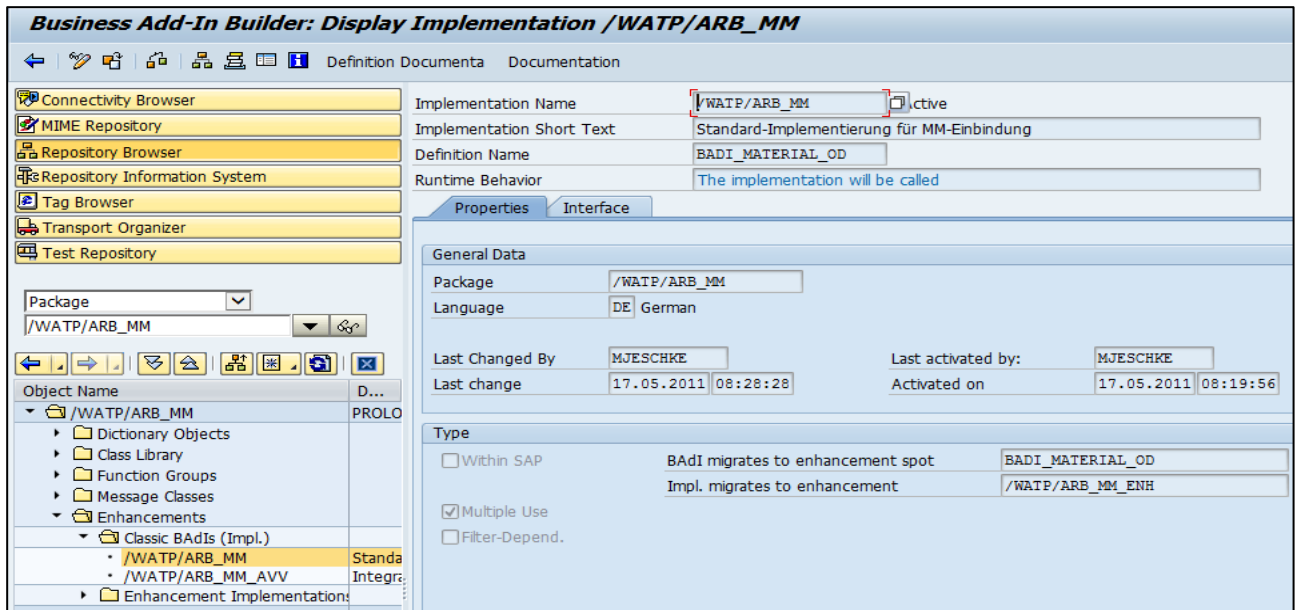


Figure 20: BAdI Material enhancement

6.2 Create Screen sequence

Transaction: SPRO

Logistics - General → Material Master → Configuring the Material Master → Define Structure of Data Screens for Each Screen Sequence

Please use a screen sequence as a basis for copy which includes tabs. 4-digits screen numbers starting with "4" are created as tabs.

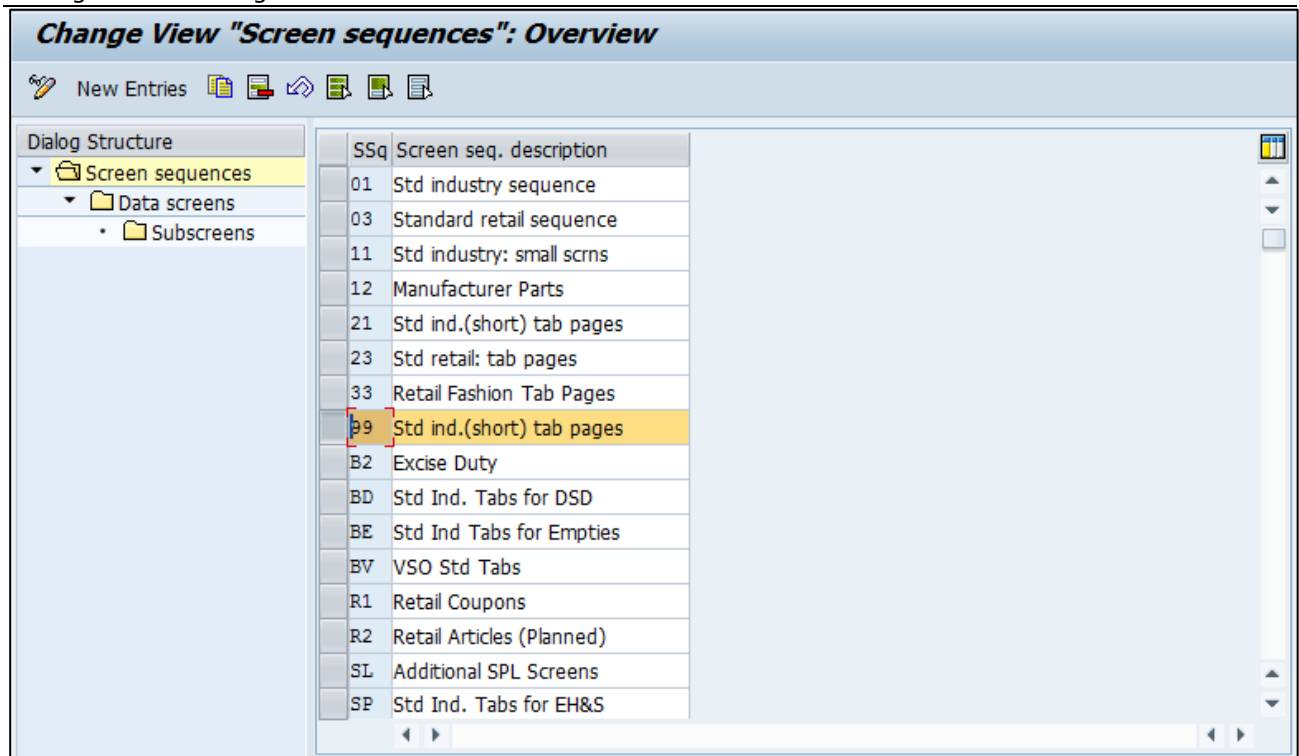


Figure 21: Basis for copy screen sequence 99

Please copy 99 but pay attention to the customer-specific naming: for e.g. Y1 or Z1.

Field name	Description
Screen sequence number	Currently selected customer-specific screen sequence
Logical screen	Technical name (double-digit), freely selectable
Screen description	Meaningful name which will be overwritten by the object configuration in the further working process, freely selectable
Screen type	Every tab is independent, that means one
Number of the screen containers	Generally freely selectable but the 4040 is the biggest subscreen
Data maintenance status	Which data are required for this tab? (at least on data maintenance is obligation)
Status	Recommendation: DATELT00
Title type for selection group	Recommendation 2
Retail- data maintenance status	empty
Alternative screen description	Same value as the screen description

Table 33: Structure of the screen sequence

6.2.1 Creation of 4 tabs for the enhancement

Create 4 tabs which serve as placeholders

Waste data 1, waste data 2, waste data 3, waste data 4

SAP S/4HANA for waste and recycling, environmental services add-on by PROLOGA - Material Flow Management - Config Guide

SSq	Scrn	Screen description	T	SCon	Maint. status	GUI status	T.	Ret.maint.status	Alt. screen descrip.
Y1	76	Planning Variant Configuration	2	0001	ABDEFGLPQSVXZ		3		Plng Variant Config.
Y1	77	Material Memo	2	0001	D		3		Material memo
Y1	78	Copy Cross-Plant Configuration	2	0001	ABDEFGLPQSVXZ		3		Copy X-plant config.
Y1	79	Display Revision Level	2	0001	ABCDEFGLPQSVXZ		3		Display rev. level
Y1	80	Create Revision Level	2	0001	ABCDEFGLPQSVXZ		3		Create rev. level
Y1	81	Proportion/Product Unit	2	4300	ABCDEFGLPQSVXZ	ADD2001	2		Proportion/prod.unit
Y1	82	MRP Areas	2	0001	EDVALBQPSZXFG		3		MRP areas
Y1	83	Operation Parameters	2	0001	EDVALBQPSZXFG		3		Operation parameters
Y1	84	Cust. Replenishment Parameters	2	0001	EDVALBQPSZXFG		3		Replenishment Params
Y1	A1	Waste data 1	1	4040	ABCDEFGLPQSVXZ	DATELT00	2		
Y1	A2	Waste data 2	1	4040	ABCDEFGLPQSVXZ	DATELT00	2		
Y1	A3	Waste data 3	1	4040	ABCDEFGLPQSVXZ	DATELT00	2		
Y1	A4	Waste data 4	1	4040	ABCDEFGLPQSVXZ	DATELT00	2		
Y1	KL	Costing (Current)	2	0001	EDVALBQPSZXFG		3		Costing (current)
Y1	KV	Costing (Past)	2	0001	EDVALBQPSZXFG		3		Costing (Past)
Y1	KZ	Costing (Future)	2	0001	EDVALBQPSZXFG		3		Costing (Future)

Figure 22: Register for material enhancement

Please store the following data/program for a sub screen.

Tab	Data screen	Number		Program	Dynpro
Waste data 1	Y1	A1	1	SAPLMGD1	0001
	Y1	A1	2	/WATP/SAPLARB_MM	0100
Waste data 2	Y1	A2	1	SAPLMGD1	0001
	Y1	A2	2	/WATP/SAPLARB_MM	0200
Waste data 3	Y1	A3	1	SAPLMGD1	0001
	Y1	A3	2	/WATP/SAPLARB_MM	0300
Waste data 4	Y1	A4	1	SAPLMGD1	0001
	Y1	A4	2	/WATP/SAPLARB_MM	0400

Table 34: Screen sequence tabs

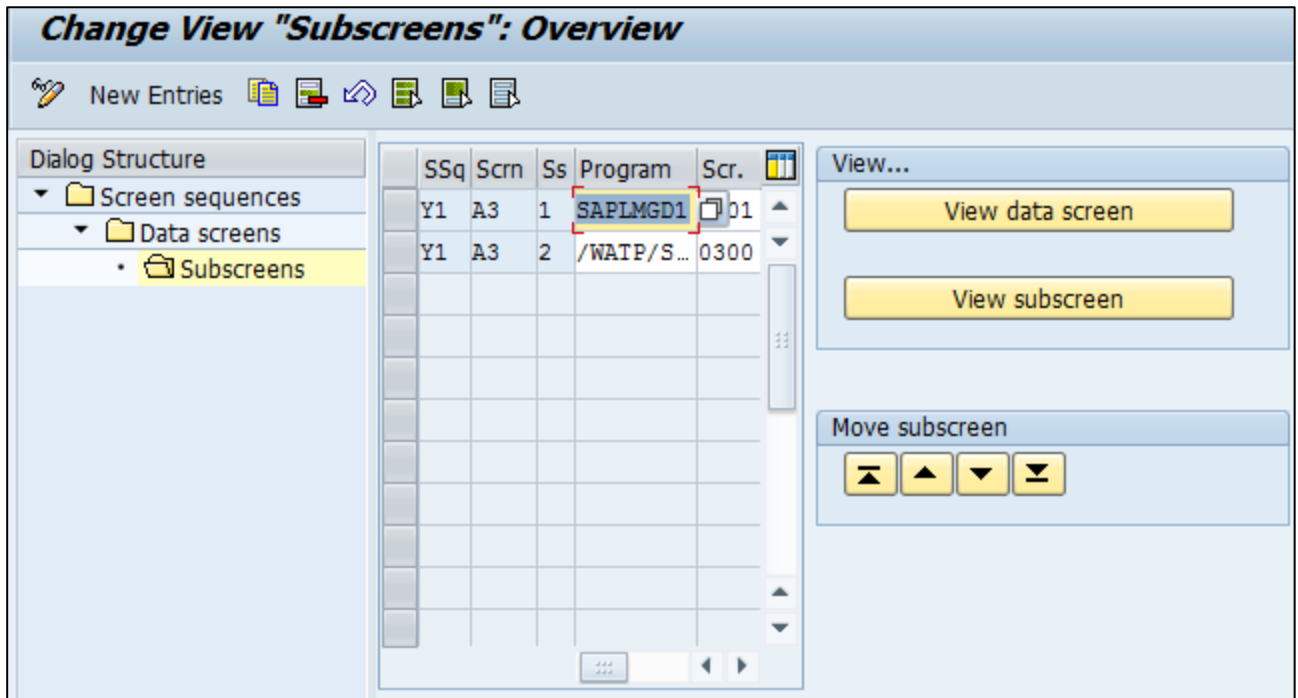


Figure 23: Screen sequence sub screen

6.3 Assignment of a Screen Sequence to a Material Type

Transaction: *SPRO*

Logistics – General → Material Master → Configuring the Material Master

Assign Screen Sequences to User/Material Type/Transaction/Industry Sector

Please name a screen reference and assign it to the screen sequence. YWDA – Y1

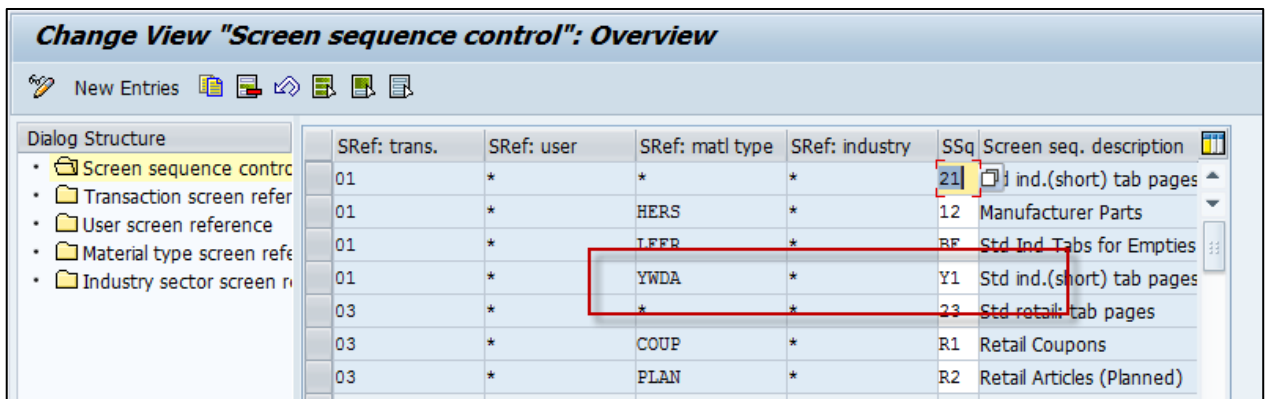


Figure 24: Screen Sequence – Screen Reference

Now you assign the screen reference to the material type. ABF – YWDA

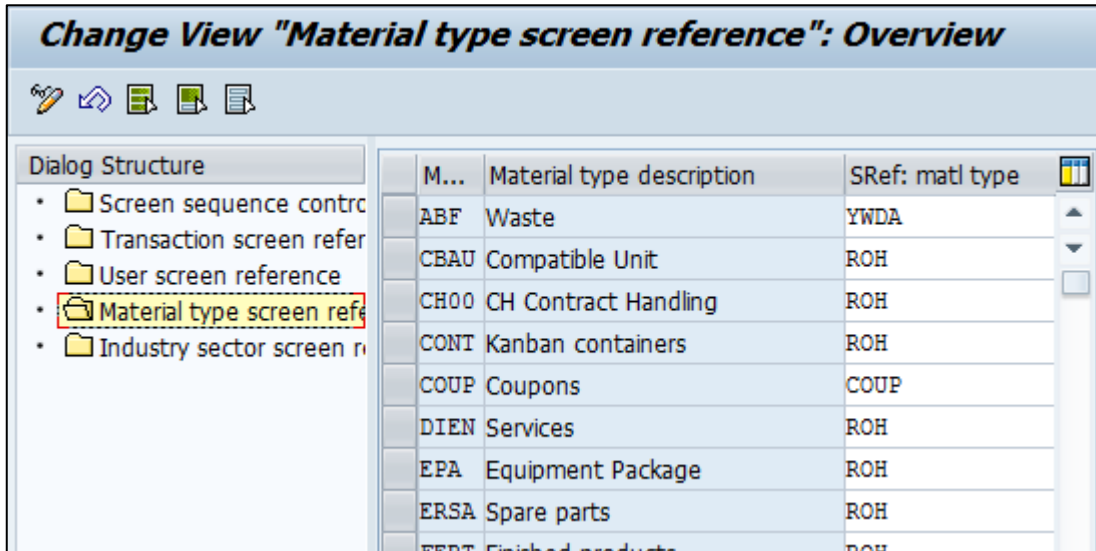


Figure 25: Screen Sequence – Screen Reference – Material Type

7 Configuration for usage of Material Inspection

The material inspection involves the input and output monitoring of material flows within a waste disposal facility. The required functions are provided in Add-on 7.0.

There are several reasons for executing material inspections, such as customer agreements or guidelines/regulations set up by the actual recycling company or authorities. These requirements define time and type of the material to be inspected.

The following chapters will give more detailed information on the prerequisites related to the implementation and their functionalities.

7.1 Activation of Modules for Material Inspection in Transaction /WATP/BASE_OBJCONFIG

You have to activate certain implementations in transaction /WATP/BASE_OBJCONFIG in order to use the material inspection.

Go to

Material Flow Management → Implementations → Material Flow Management → Material Inspection

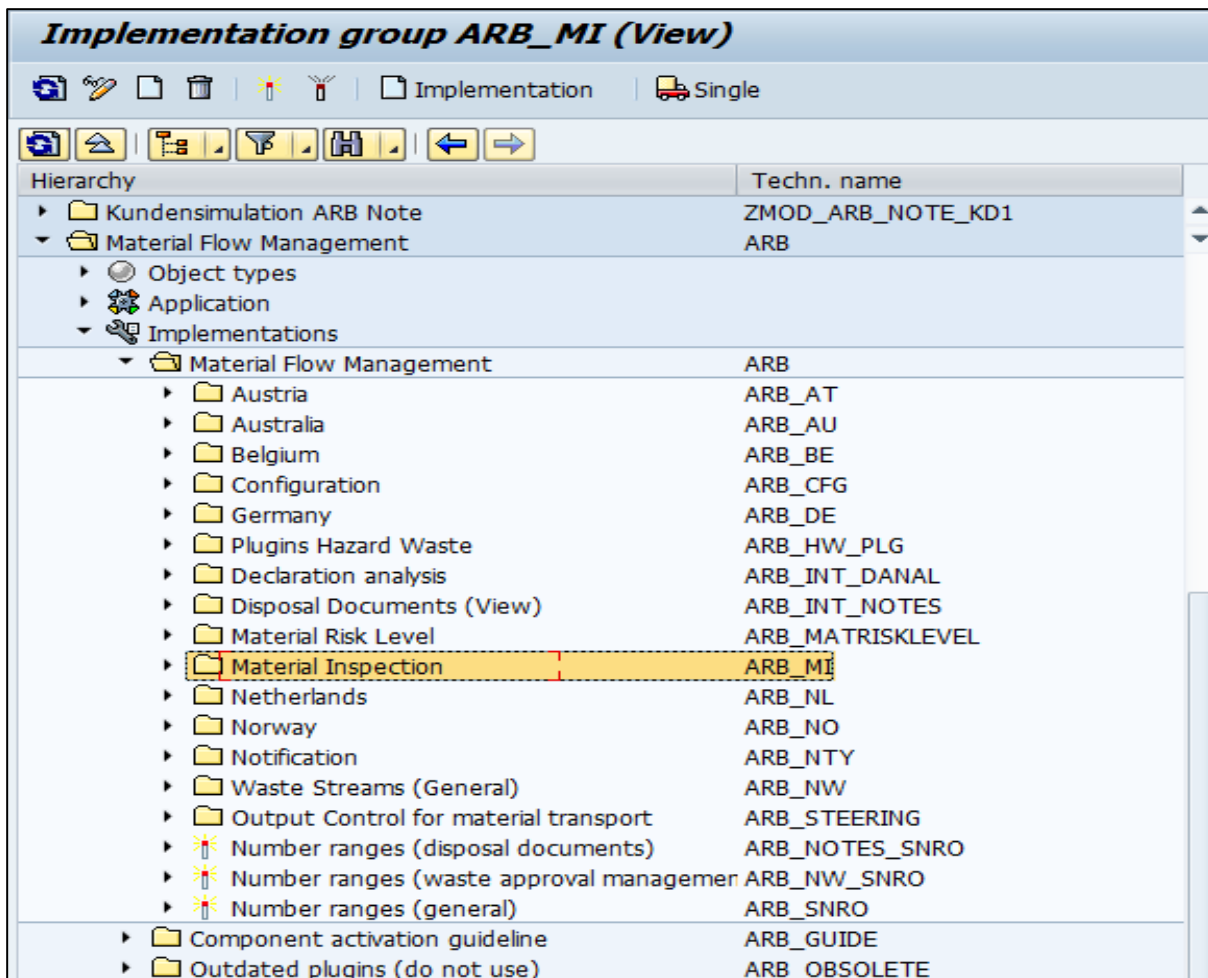


Figure 26: Material Inspection in Object Configuration

An overview of the implementations and their functions to be activated will be given in the following table. The column *Function* gives a short description of the function that is activated by the implementation. In the column *Node in Tree* the implementation group (technical name) is given.

7.2 Implementation in /WATP/BASE_OBJCONFIG



In order to activate all implementations of one implementation group, select the implementation group and click on the button



Implementation	Function	Node in Tree (Techn. Name)	Name of Implementation in Tree
ARB_MI	Activates the function „Material Inspection“ in the system. Activate this implementation if you want to use the material inspection.	ARB	Material Inspection
ARB_MI_CFG	Activates the configuration of the material inspection. Activate this implementation if you want to use the material inspection.	ARB_MI	Configuration
ARB_MI_CFG_CONF	General basic functionality. Activate this implementation if you want to use the material inspection.	ARB_MI ARB_MI_CFG	Material Inspection
ARB_MI_CFG_CONFTREE	Activates the material inspection in the configuration tree /WATP/ARB_CONFIG Activate this implementation if you want to use the material inspection.	ARB_MI ARB_MI_CFG	Implement material inspection in the configuration tree
ARB_MI_CFG_DYNAM	Activates the dynamic strategy of the material inspection. Activate this implementation if you want to use the material inspection.	ARB_MI ARB_MI_CFG	Dynamic
ARB_MI_CFG_DYNAMTREE	Activates the dynamic strategy in tree /WATP/ARB_CONFIG: Activate this implementation if you want to use the material inspection.	ARB_MI ARB_MI_CFG	Implement dynamic in configuration tree
ARB_MI_CFG_ECCAT	Activates the allocation of clarification cases in material inspection. Activate this implementation if you want to use the material inspection.	ARB_MI ARB_MI_CFG	Clarification Category Assignment
ARB_MI_CFG_ECCATTREE	Activates the integration of a clarification case allocation in the configuration tree. /WATP/ARB_CONFIG Activate this implementation if you want to use the material inspection.	ARB_MI ARB_MI_CFG	Implement clarification case category assignment in configuration tree
ARB_MI_CFG_STRAT	Activates a strategic monitoring	ARB_MI	Strategy

	of the material inspection. Activate this implementation if you want to use the material inspection.	ARB_MI_CFG	
ARB_MI_CFG_STRATTREE	Activates the integration of the strategic monitoring in the configuration tree. /WATP/ARB_CONFIG Activate this implementation if you want to use the material inspection.	ARB_MI ARB_MI_CFG	Strategy in the configuration tree
ARB_MI_EXT	Activates the enhancements required in material inspection. Activate this implementation if you want to use the material inspection.	ARB_MI	Extension/Integration to other application
ARB_MI_EXT_MAT	Activates the enhancements in the material master data (MM) enabling the administrator to make the required settings in the material inspection. Activate this implementation if you want to use the material inspection.	ARB_MI ARB_MI_EXT	Material enhancement
ARB_MI_EXT_NW_DE	Activates the enhancement of approvals in /WATP/ARB_NW enabling the selection of a monitoring strategy. Activate this implementation if you want to use the material inspection.	ARB_MI ARB_MI_EXT	Waste Stream/waste stream enhancement GER
ARB_MI_MASK	Activates adjustments in transaction /WATP/ARB_MAINS. Activate this implementation if you want to use the material inspection.	ARB_MI	Adjustments at the material inspection mask
ARB_MI_NAV	Enables forward navigation in /WATP/ARB_MAINS. Double click for a detailed view of the control record and the user. Activate this implementation if you want to use the forward navigation in the material inspection.	ARB_MI ARB_MI_MASK	Forward navigation in transaction material inspection
ARB_MI_PLG	Activates Plugins required for material inspection. Activate this implementation if you want to use the material inspection.	ARB_MI	Plugins for material inspection
ARB_MI_PLG_BO_HWSR		ARB_MI ARB_MI_PLG	Additional checks on the service frequency
ARB_MI_PLG_BO_HWSRAT		ARB_MI ARB_MI_PLG	Additional checks on the service frequency (Austria)
ARB_MI_PLG_BO_ORDER		ARB_MI ARB_MI_PLG	Connection to disposal order
ARB_MI_PLG_ORDERPOS	Activates a function for enhancing the material inspection to individual waste disposal items. This function is activated if a waste disposal item is saved.	ARB_MI ARB_MI_PLG	Additional checks on the service frequency

	Material inspection is informed of relevant changes. It is recommended to use this function with the material inspection.		
ARB_MI_PLG_WEIGHPROC	Activates a function that triggers the automatic creation of a control record with every weighing transaction (e.g. direct delivery) It is recommended to use this function with the material inspection.	ARB_MI ARB_MI_PLG	Material inspection enhancement for weighing processes

Table 35: Implementations of Material Inspection



You can implement an implementation set in the material inspection that contains all relevant implementations.

ARB_MI_SET: Set Material Inspection

- ARB_MATRISKLEVEL_SET → Set- Material Risk Level
- ARB_MI_CFG_CONF → Material Inspection
- ARB_MI_CFG_CONFTREE → Material Inspection in Configuration Tree
- ARB_MI_CFG_DYNAM → Dynamic
- ARB_MI_CFG_DYNAMTREE → Display Dynamic in Configuration Tree
- ARB_MI_CFG_ECCAT → Clarification Case Category Allocation
- ARB_MI_CFG_ECCATTREE → Display Clarification Case Category Allocation in Configuration Tree
- ARB_MI_CFG_STRAT → Strategy
- ARB_MI_CFG_STRATTREE → Strategy in Configuration Tree
- ARB_MI_EXT_MAT → Material Enhancement
- ARB_MI_EXT_NW_DE → Approval Enhancement DE
- ARB_MI_NAV → Forward Navigation in Transaction Material Inspection
- ARB_MI_PLG_ORDERPOS → Material Inspection Enhancements for Waste Disposal Items
- ARB_MI_PLG_WEIGHPROC → Material Inspection Enhancement for Weighing Processes

7.3 Material Risk

In order to use the dynamic material inspection you have to implement the implementation group „Material Risk Level“. The following table lists all relevant implementations of the group and their related functions.

Material Risk Level	ARB_MATRISKLEVEL
Configuration	ARB_INT_CONFIG
Material risk level - mask	ARB_INT_CONFIG_MRL
Material risk level . Implement in conf	ARB_INT_CONFIG_MRLT
Enhancements on the material	ARB_MAT_EXT
Integration risk level on the material	ARB_MAT_EXT_RISKLEVL
Set - Material risk level	ARB_MATRISKLEVEL_SET

Figure 27: Material Risk Level in Object Configuration Tree

Implementation	Function	Node in Tree (Techn. Name)	Name of Implementation in Tree
<i>ARB_MATRISKLEVEL</i>	Activates the function „Material Risk Level“ in the system. Activate this implementation if you want to use the Material Risk Level.	<i>ARB</i>	Material Risk Level
<i>ARB_INT_CONFIG</i>	Enables the configuration of the Material Risk Level. Activate this implementation if you want to use the Material Risk Level.	<i>ARB_MATRISKLEVEL</i>	Configuration
<i>ARB_INT_CONFIG_MRL</i>	General basic settings of Material Risk Level. Activate this implementation if you want to use the Material Risk Level.	<i>ARB_MATRISKLEVEL</i> <i>ARB_INT_CONFIG</i>	Material Risk Level - Screen
<i>ARB_INT_CFG_MRLT</i>	Activates the Material Risk Level in the configuration tree. /WATP/ARB_CONFIG Activate this implementation if you want to use the Material Risk Level.	<i>ARB_MATRISKLEVEL</i> <i>ARB_INT_CONFIG</i>	Display Material Risk Level in Configuration Tree
<i>ARB_MAT_EXT</i>	Activates the enhancements of the material master data (MM) that are required by the Material Risk Level. Activate this implementation if you want to use the Material Risk Level.	<i>ARB_MATRISKLEVEL</i>	Material Enhancements
<i>ARB_MAT_EXT_RISKLEVL</i>	Activates the integration of the Material Risk Level in the material master data (MM) enabling the administrator to make the relevant settings. Activate this implementation if you want to use the Material Risk Level.	<i>ARB_MATRISKLEVEL</i> <i>ARB_MAT_EXT</i>	Integration of Risk Level at Material

Table 36: Implementations of Material Risk Level



You can implement the Material Risk Set „*ARB_MATRISKLEVEL_SET*“ which already contains the following implementations: *ARB_INT_CONFIG_MRL* (Material Risk Level Screen), *ARB_INT_CONFIG_MRL* (Material Risk Level Configuration) and *ARB_MAT_EXT_RISKLEVL* (Integration Risk Level at Material)

8 Configuration for usage of Output Steering

The „output steering“ is closely linked to the material flow management component. The function allows for the monitoring of outgoing material flows in order to guarantee contractually agreed upon delivery quota. „

The required functions are provided in Add-on 7.0.

The following chapters will give more detailed information on the prerequisites related to the implementation and their functionalities.

8.1 Activate Output Steering Modules in Transaction /WATP/BASE_OBJCONFIG

You have to activate certain implementations in transaction /WATP/BASE_OBJCONFIG in order to use the output steering.

Go to:

Legal Requirements → Implementations → Legal Requirements → Output Steering for Material Transport

▼	Output Control for material transport	ARB_STEERING
▼	Configuration	ARB_ST_CONFIG
▶	Allowed Contract Types	ARB_ST_CONFIG_CONTR
▶	General settings	ARB_ST_CONFIG_DEF
▶	Application enhancement for demarc	ARB_ST_CONFIG_RNG
▶	Tree enhancement of the ARB config	ARB_ST_CONFIG_TREE
▼	Material master enhancement	ARB_ST_MM_ENHANCE
▶	Output steering - connection for mat	ARB_STEERING_MM
▼	Plugins for Output Control	ARB_ST_PLG
▶	Standard dialog for order creation	ARB_ST_PLG_OPO
▶	Plugin for order item	ARB_ST_PLG_ORDERPOS
▶	Standard dialog for order distribution	ARB_ST_PLG_ORI
•	Set - output steering	ARB_ST_SET
▶	Number ranges (disposal documents)	ARB_NOTES_SNRO
▶	Number ranges (waste approval managemer	ARB_NW_SNRO
▶	Number ranges (general)	ARB_SNRO

Figure 28: Output Steering in Object Configuration

An overview of the implementations and their functions to be activated will be given in the following table. The column *Function* gives a short description of the function that is activated by the implementation. In the column *Node in Tree* the implementation group (technical name) is given.

8.2 Implementation in /WATP/BASE_OBJCONFIG



In order to activate all implementations of one implementation group, select the implementation group and click on the button



Implementation	Function	Node in Tree (Techn. Name)	Name of Implementation in Tree
<i>ARB_STEERING</i>	Activates the function „Output Steering“ in the system. Activate this implementation if you want to use the output steering function.	<i>ARB</i>	Output Steering for Material Transport
<i>ARB_ST_CONFIG</i>	Activates the configuration of the output steering. Activate this implementation if you want to use the output steering function.	<i>ARB_STEERING</i>	Configuration
<i>ARB_ST_CONFIG_CONTR</i>	Activates the definition of those contract types that are to be used with the output steering. Activate this implementation if you want to use the output steering function.	<i>ARB_STEERING</i> <i>ARB_ST_CONFIG</i>	Permitted Contract Types
<i>ARB_ST_CONFIG_DEF</i>	General settings of the output steering in /WATP/ARB_CONFIG. Enables the definition of a standard currency, standard weight unit and of a waste disposal facility related order type. Activate this implementation if you want to use the output steering function.	<i>ARB_STEERING</i> <i>ARB_ST_CONFIG</i>	General Settings
<i>ARB_ST_CONFIG_RNG</i>	Activates the range definition of the output steering in /WATP/BASE_ADMIN. A check is triggered when changes in the timeline of the route plan profile are made although planning data are already available. , It is recommended to activate this plugin if you want to use the output steering function.	<i>ARB_STEERING</i> <i>ARB_ST_CONFIG</i>	Application Enhancements for Ranges
<i>ARB_ST_CONFIG_TREE</i>	Activates the enhancements in tree /WATP/ARB_CONFIG. Activate this implementation if you want to use the output steering function.	<i>ARB_STEERING</i> <i>ARB_ST_CONFIG</i>	Tree Enhancement of ARB-Config
<i>ARB_ST_MM_ENHANCE</i>	Activates the enhancements in the material master data (MM) by adding tab „Output Steering“. Activate this implementation if you want to use the output steering function.	<i>ARB_STEERING</i>	Material Master Data Enhancement
<i>ARB_STEERING_MM</i>	Activates the selection function that defines the type of steering allocated to a material in MM. Activate this plugin if you want to use the output steering function.	<i>ARB_STEERING</i> <i>ARB_ST_MM_ENHANCE</i>	Output Steering – Integration Material Master Data
<i>ARB_ST_PLG</i>	Enables the usage of Plugins for the output steering function.	<i>ARB_STEERING</i>	Plugins for Output Steering

	Activate this plugin if you want to use the output steering function.		
<i>ARB_ST_PLG_OPO</i>	Defines the dialog content that is displayed when creating an order. Activate this plugin if you want to use the output steering function.	<i>ARB_STEERING</i> <i>ARB_ST_PLG</i>	Standard Dialog for Order Creation
<i>ARB_ST_PLG_ORDERPOS</i>	Activates the calculation of the estimated weight and updates the planned weight. Activate this plugin if you want to use the output steering function.	<i>ARB_STEERING</i> <i>ARB_ST_PLG</i>	Plugin for Order Item
<i>ARB_ST_PLG_ORI</i>	Activates the dialog for order allocation and enables a selective control of certain facilities. Activate this plugin if you want to use the output steering function.	<i>ARB_STEERING</i> <i>ARB_ST_PLG</i>	Standard Dialog for Order Allocation

Table 37: Implementations of Output Steering



You can implement an implementation set in the material inspection that contains all relevant implementations.

<i>ARB_ST_SET</i> →	Set – Output Steering:
<i>ARB_ST_CONFIG_CONTR</i> =	Permitted Contract Types
<i>ARB_ST_CONFIG_DEF</i> =	General Settings
<i>ARB_ST_CONFIG_RNG</i> =	Application Enhancement for Range
<i>ARB_ST_CONFIG_TREE</i> =	Tree Enhancements in ARB-Config
<i>ARB_ST_PLG_OPO</i> =	Standard Dialog for Order Creation
<i>ARB_ST_PLG_ORDERPOS</i> =	Plugin for Order Item
<i>ARB_ST_PLG_ORI</i> =	Standard Dialog for Order Allocation
<i>ARB_STEERING_MM</i> =	Output Steering – Integration in Material Master Data

The enhancement is made at the plugin *ARB_STEERING_MM*.

Now you can decide in the object configuration in which tab the MM enhancement should be displayed. Each subscreen is divided into two more sub screens - here named slots. 0100 has got the slots SS SLOT1 and SS SLOT1A below. 0200 has got the slots SS SLOT2 etc. The upper slot (the one with no "A" in it) is the main slot and gives the name for the tab. Is this slot not filled, the slot below becomes the main slot. Is it not filled, too (both slots are empty), you finally cannot see the tab.

The same also applies to switched-off applications, for e.g.: Is the material inspection not activated, it cannot be seen in MM, too. The description (Name of the tab in MM) has its origin in the object configuration and can also be changed here. (See red frame)

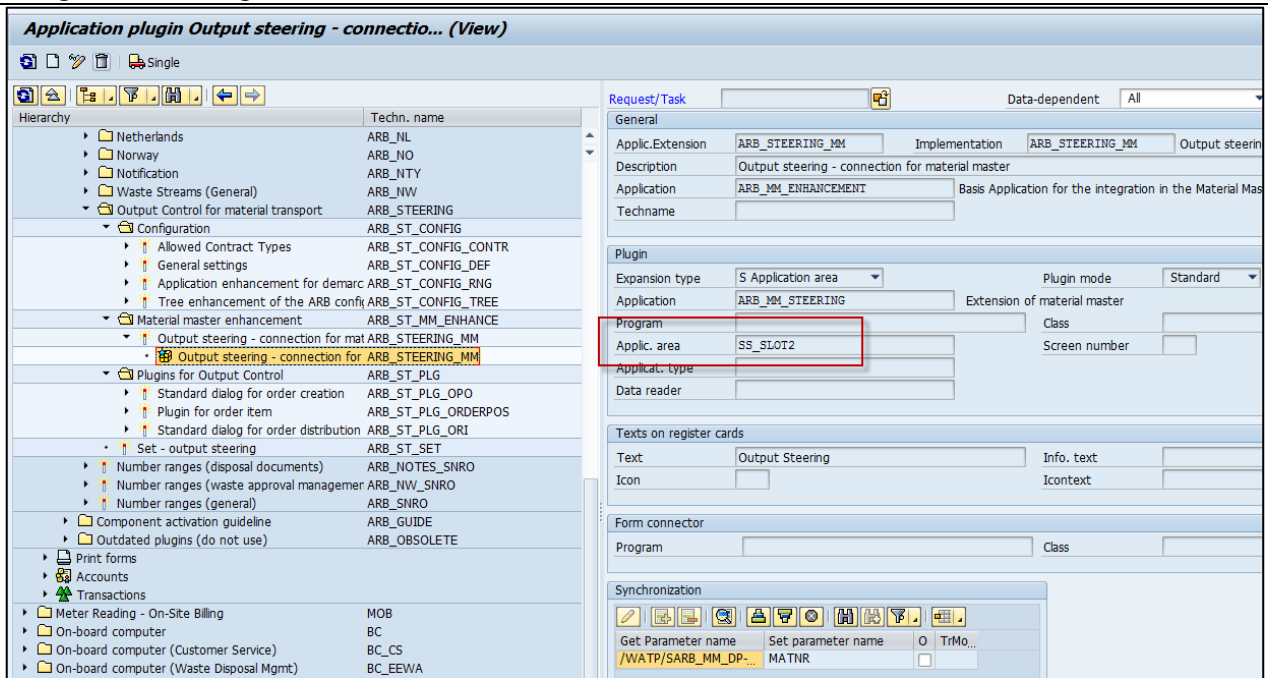


Figure 29: Material Enhancement for Output Steering

9 Enhancement Multiple Item Weighing

9.1 Implementations Multiple Item Weighing

The application *Material Flow Management* supports also the Multiple Item Weighing (transaction *EWAWA_MULTI*). In order to use the integration of the material flow management application following implementations has to be activated in transaction */WATP/BASE_OBJ_CONFIG*.

The implementations to be activated for the waste legislation are located in the tree on the path:

Material Flow Management → *Implementations* → *Material Flow Management (ARB)* → *Plugins Hazard Waste* → *ARB plugins for weighing processes* → *Multi item scale*.

Implementation	Function	Nodes in tree (technical name)	Name of Implementation in tree
<i>ARB_PLG_MULTIWEIGHHD</i>	Main implementation for the multi item scale	<i>ARB_MW</i>	Multi item scale header
<i>ARB_HW_PLG_MW_NWB</i>	Enables the quantity posting from the weighing ticket in the disposal document.	<i>ARB_MW</i>	Weighing process for external delivery: Update weight in note when weighing record gets booked.
<i>ARB_HW_PLG_MW_NWR</i>	Enables the cancellation of the quantity posting from the weighing ticket in the disposal document. In order to cancel the quantity posting within the disposal document the plugin <i>ARB_HW_PLG_MW_SCB</i> has to be deactivated.	<i>ARB_MW</i>	Multiple item weighing, weighing process for external delivery: Update quantities at corresponding disposal document when cancelling.
<i>ARB_HW_PLG_MW_SCB</i>	Enables the status change of the disposal document from Complete to finish after during posting of the weighing ticket. Afterwards there is no additional quantity posting in the disposal document possible.	<i>ARB_MW</i>	Multiple item weighing, weighing process for external delivery: Set corresponding disposal document to "finished" when posting.
<i>ARB_HW_PLG_MW_SCR</i>	Enables the status change of the disposal document from finish to cancel during cancellation of the weighing ticket.	<i>ARB_MW</i>	Multiple item weighing, weighing process for external delivery: Set corresponding disposal document to "cancelled" when cancelling.

Table 38: Implementations for Multiple Item Weighing

Implementation	Using type	Function	Node in tree (technical name)	Name of Implementation in tree
ARB_HW_PLG_MW_NW_SET	A		ARB_MW	Multiple item weighing, weighing process for external delivery: Update quantities in corresponding disposal document when posting/cancelling.
ARB_HW_PLG_MW_SC_SET	A		ARB_MW	Multiple item weighing, weighing process for external delivery: Set corresponding disposal document to "finished"/"cancelled" when posting/cancelling.

Table 39: Implementation Set for Multiple Item Weighing

9.2 BAdI's Multiple Item Weighing

Please check after activation of the application *Material Flow Management* if the enhancement implementations for the multiple item weighing are active.

The standard BAdI's for the enhancement implementations are located in the standard customizing of waste management in following path: *Waste Management* → *Waste Disposal Facilities* → *Weighing Connection* → *Special Settings for Multiple Item Weighing* → *BAdI: Enhancement to Multiple Item Application*.

The enhancement implementations enable the screen enhancements for the material flow documents in the multiple item weighing.

Standard BAdI	Enhancement Implementation
Enhancements Business Object Multiple Item Weighing	/WATP/BA_MULTIWEIGHPROCHEAD
Enhancements Fast Weighing Entry (Multiple Item)	/WATP/ARBHAZARDWASTE_MWEIGHT

Table 40: Enhancement Implementations for Multiple Item Weighing

10 Data Archiving and Data Aging

SAP S/4HANA for waste and recycling, environmental services add-on by PROLOGA provides the functionality to archive data. Furthermore to reduce the workload of the database it is possible and recommended to delete no longer needed data.

You can also use an archiving object in Information Lifecycle Management. A prerequisite is that you have activated the associated business function. The system then also displays the ILM actions group box. You can use these actions to perform archiving in which the retention periods defined in the Information Retention Manager are evaluated. You can also make snapshot (copies) of data and destroy data that meets the appropriate criteria.

The following archiving objects and the corresponding tables are provided by PROLOGA:

Archiving Objects	Table	Description
/WATP/ANOT		Consignment Note Transnational
	/WATP/TARBNOTES	Disposal Documents (View)
	/WATP/TARBNOTEEX	External Documents
	/WATP/TARBNOTESV	Note for Documents
	/WATP/TARBNOTETT	Additional Texts for Disposal Document
	/WATP/TARBNOTEUN	UN Catalog for Disposal Document
	/WATP/TARBNWSTAD	Single Record for Approval Statistic
	/WATP/TNOTEAGIO	Allocation Waste Relat. Surcharge to Document
	/WATP/TNOTEROUTE	Allocation of Collector to Route
	/WATP/TNOTEUNRL	UN Catalog Regulations at Document
	/WATP/TARBNOTEAT	Documents (Austria)
	/WATP/TARBNTATCO	Additional Waste Collector (at Document)
	/WATP/TARBNOTEAU	Documents (Australia)
	/WATP/TARBNOTEBE	Document (Belgium)
	/WATP/TARBZKSNR	ZKS Number for Documents
	/WATP/TARBZKSDOC	eANV ZKS Document
	/WATP/TARBZKSMMSG	eANV ZKS Document - Detail Message IDs
	/WATP/TARBNOTENL	Document (Netherlands)
	/WATP/TARB_AMK	AMICE Interface - Key for Message
	/WATP/TARB_AMM	AMICE Interface - Message
	/WATP/TARB_AMR	AMICE Interface - Confirmation
	/WATP/TARB_AMF	AMICE Interface - Error of Confirmation
	/WATP/TEBAMSGST	Electronic Dispatch Note for Waste Products
	/WATP/TEBANOTENL	EBA Setting at Documents (Netherlands)
/WATP/ANTY		Notification
	/WATP/TARB_NTY	Notification
	/WATP/TARBNOTEIN	Documents (Transnational) Accompanying Form Notification
	/WATP/TARBNTNTB	Document Allocated Transporter from Notification
/WATP/ANW		Approval Transnational
	/WATP/TARBZKSDOC	eANV ZKS Document
	/WATP/TARBZKSRGA	Login Information Data
	/WATP/TARBZKSRGK	Register Information Data
	/WATP/TARBZKSRGZ	Part Register Move-out Data
	/WATP/TARBZKSMMSG	eANV ZKS Document - Detail Messages IDs
/WATP/AREG		Archiving of Registers
	/WATP/TARBZKSDOC	eANV ZKS Document
	/WATP/TARBZKSRGA	Login Information Data
	/WATP/TARBZKSRGK	Register Information Data

	/WATP/TARBZKSRGZ	Part Register Move-out Data
	/WATP/TARBZKSMMSG	eANV ZKS Document - Detail Messages IDs

Table 41: Archiving objects and their corresponding tables

The following reports are available for archiving the respective archiving object:

Archiving Objects	Program	Function
/WATP/ANOT		
	/WATP/ANOT_ARCHIVE_WRITE	Write Program
	/WATP/ANOT_ARCHIVE_DELETE	Deletion Program
/WATP/ANTY		
	/WATP/ANTY_ARCHIVE_WRITE	Write Program
	/WATP/ANTY_ARCHIVE_DELETE	Deletion Program
/WATP/ANW		
	/WATP/ANW_ARCHIVE_WRITE	Write Program
	/WATP/ANW_ARCHIVE_DELETE	Deletion Program
/WATP/AREG		
	/WATP/AREG_ARCHIVE_WRITE	Write Program
	/WATP/AREG_ARCHIVE_DELETE	Deletion Program

Table 42: Reports for the archiving objects

Furthermore the following archiving objects are extended by tables provided by PROLOGA:

Archiving Objects	Table	Description
ISU_EORDER		IS-U Archiving: Waste Disposal Order The tables refer to the order or order items and will be archived when archiving an order.
	/WATP/TARB_AWN	AMICE Interface – Reported Weighing Notes
	/WATP/TARB_AOO	AMICE Interface – Reported Waste Disposal Orders
	/WATP/TARB_AMK	AMICE Interface – Key for Messages
	/WATP/TARB_AMM	AMICE Interface - Message
	/WATP/TARB_AMR	AMICE Interface - Confirmation
	/WATP/TARB_AMF	AMICE Interface – Error of Confirmation
ISU_WPROC / ISU_MWPROC		Weighing Transactions / Weighing Transactions - Multiple Item Weighing The tables will be archived when archiving a weighing transaction, regardless of the transaction you are using for recording weighing transactions.
	/WATP/TARB_AWP	AMICE Interface – Reported Weighing Transactions
	/WATP/TARB_AMK	AMICE Interface – Key for Messages
	/WATP/TARB_AMM	AMICE Interface - Message
	/WATP/TARB_AMR	AMICE Interface – Confirmation
	/WATP/TARB_AMF	AMICE Interface – Error of Confirmation
CA_BUPA		Archiving Business Partners The tables only refer to business partners and cannot be connected to technical documents. Therefore these tables will be archived when archiving a business partner.

	/WATP/TARBCTRLBP	eANV Business Partner Control Parameter
	/WATP/TARBSIGGP	eANV Signature Group Allocation Business Partner
	/WATP/TSRCPLACE	Premise
	/WATP/TSRCPLID	Identification Number for Premise
	/WATP/TARBPTRNR	Expansion Business Partner ARB
	/WATP/TARB_BPEWC	Allocation AVV Code for Business Partner
	/WATP/TPOEWUICP	Allocation Contact and UI Side with Rights
SD_VBAK		Sales Documents Depending on the customizing a reference to an address characteristic is available in the contract header or its item. When archiving a contract the tables are also archived and the reference will not be displayed anymore.
	/WATP/TCSCABNADR	Allocation for Characteristic Addresses (Master)
	/WATP/TCSCABADRD	Allocation for Characteristics Addresses (Detail)

Table 43: Archiving objects with extended tables

10.1 Retention Period for Archiving Objects

The retention period must have expired in order to be able to archive the weighing data records. You make the relevant settings in the application customizing. In the implementation guide (IMG) go to *SAP Utilities → Tools → Archiving → Define Retention Period for Archiving Objects*.

To maintain the retention period for the archiving objects /WATP/ANOT, /WATP/ANTY, /WATP/ANW and /WATP/AREG call up the transaction /WATP/ARCH_RESIDENZ.

For each archiving objects at least one value has to be maintained. Therefore the business configuration set /WATP/ARB_ARCHIVING_001 can be installed.

Change View "Maintain Retention Period": Overview				
Maintain Retention Period				
Arch. Object	Country	Description	Res.zeit	
/WATP/ANOT		Accompanying document transnational	730	
/WATP/ANTY		Notifications	730	
/WATP/ANW		Approval transnational	730	
/WATP/AREG		Archiving of registers	730	

Figure 30: Retention period overview with BC set

For the archiving objects /WATP/ANOT and /WATP/ANW a special retention period for a certain country can be entered. For example documents from Belgium can be archived after end of purpose (EoP) after 365 days.

Change View "Maintain Retention Period": Overview			
New Entries			
Maintain Retention Period			
Arch. Object	Country	Description	Res.zeit
/WATP/ANOT		Accompanying document transnational	730
/WATP/ANOT	BE	Accompanying document transnational	365
/WATP/ANFY		Notifications	730
/WATP/ANW		Approval transnational	730
/WATP/AREG		Archiving of registers	730

Figure 31: Country-specific retention period