

# Extensibility of SAP Global Batch Traceability 3.0 (SAP GBT)

The screenshot displays the SAP NetWeaver Business Client interface for SAP Global Batch Traceability 3.0. It is divided into several key sections:

- Search: Batches**: A search criteria panel with fields for Batch Number (starts with C\_3), Material Number (is), Material Description (is), and Posting Date (is between). It includes options for 'Restrict Available Search Criteria', 'Choose Network View', 'Limit Analyzed Network', and 'Active Worklist'.
- Result List: 5 Batches**: A table listing search results with columns for Batch Number, Material Number, Plant, Stor., Logical System, and Vendor Batch.
- Network: Graphic**: A complex network diagram showing the flow of materials between various plants and logical systems, with nodes representing different stages of production and distribution.
- Example Report for Distribution List**: A detailed table showing distribution data for selected batches, including columns for Batch No., Material Description, Plant, Logical System, Plant, Delivery, Del. Qy, Del. To, Goods Receipt, and Goods Recd. Address.
- Stock Information**: A table providing stock details for selected batches, including columns for Batch, Material, Material Description, Logical System, Plant, P-Info, Stor. No., Stock Descr, Unit, Stock ID, Historical, Out. Ind, Stocked, In-Transit, Type, Stock No., and Stock No.
- Batch Details**: A detailed view for a specific batch (C\_3002), including basic data (Batch Number, Material Description, Plant, Storage Location, Vendor), dates (Date of Manufacture, Batch Received Stock, Next Inspection Date), administrative data (Insert in GBT), and classification (Insert in GBT, Model in GBT).

Document version: 3.0 (as of SP02) V04 – 2019-05-24  
PUBLIC

## Disclaimer

*In the following, you find SAP-owned information which is not part of the SAP product documentation. By using this documentation, YOU AGREE that unless expressly stated otherwise in your agreements with SAP, the content of this document is not part of SAP product documentation and that you may not infer any product documentation claims against SAP based on this information.*

## Contents

|       |   |    |
|-------|---|----|
| 1     | Introduction .....  | 5  |
| 1.1   | Architecture Overview of GBT .....                          | 5  |
| 1.2   | Data Model of GBT .....                                     | 7  |
| 1.2.1 | List of Objects in the GBT-Network.....                     | 8  |
| 1.3   | Package Structure GBT .....                                 | 10 |
| 2     | Overview of Extensibility in GBT.....                       | 11 |
| 2.1   | Object Extensibility.....                                   | 11 |
| 2.2   | Process Extensibility .....                                 | 12 |
| 2.2.1 | Extensions to integrate with QM .....                       | 12 |
| 2.2.2 | Extensions to restrict Batches .....                        | 12 |
| 2.2.3 | Extensions to show usage decisions in Network Graphic.....  | 12 |
| 3     | Batch Master.....   | 13 |
| 3.1   | Mapping of Class and Characteristic for Classification..... | 13 |
| 3.2   | Extend the Batch Master in GBT .....                        | 13 |
| 3.2.1 | Extend by Classification .....                              | 13 |
| 3.2.2 | Extension of Batch Table.....                               | 13 |
| 3.3   | Search for Batches.....                                     | 14 |
| 3.3.1 | Add new Search Criteria to 'Search for Batches'.....        | 15 |
| 3.3.2 | Adapt batch specific search criteria .....                  | 17 |
| 3.3.3 | Enhance Search result with additional Attributes .....      | 17 |
| 3.3.4 | Predefined Search Patterns .....                            | 18 |
| 3.4   | Search for Handling Units .....                             | 18 |
| 3.4.1 | Add new Search Criteria to 'Search for Handling Units'..... | 19 |
| 4     | Network Objects of Batch Genealogy Network.....             | 20 |
| 4.1   | Extension of received GBT-Events (BAdI).....                | 20 |
| 4.2   | Extension of business documents .....                       | 21 |
| 4.2.1 | Field extension.....  | 21 |
| 4.2.2 | New Business Documents.....                                 | 22 |
| 4.2.3 | UI extension.....   | 24 |
| 4.2.4 | Extension of UI Navigation .....                            | 27 |

|       |   |    |
|-------|---|----|
| 4.2.5 | Extent load of Business Documents Details.....                | 29 |
| 4.2.6 | Confidential attributes.....                                  | 30 |
| 4.3   | Extension of missing events.....                              | 31 |
| 4.3.1 | Field extension.....  | 31 |
| 4.3.2 | Configuration of Mandatory Fields.....                        | 31 |
| 4.4   | Extension of Worklist.....                                    | 32 |
| 4.4.1 | Workgroup.....  | 32 |
| 4.4.2 | Worklist Header.....  | 32 |
| 4.4.3 | Worklist Items.....   | 32 |
| 4.4.4 | Worklist Action.....  | 33 |
| 5     | Master data.....  | 33 |
| 5.1   | Material.....   | 33 |
| 5.1.1 | Product Category to group Materials.....                      | 34 |
| 5.1.2 | Extension of Product.....                                     | 35 |
| 5.1.3 | Extension of other Objects with Material attributes.....      | 36 |
| 5.2   | Business Partner.....   | 36 |
| 5.2.1 | Extension of Business Partner.....                            | 36 |
| 5.2.1 | Extension of other Objects with Plant attributes.....         | 36 |
| 5.3   | Descriptions.....   | 36 |
| 5.3.1 | Add a new Class for Description Integration.....              | 37 |
| 5.3.2 | Store Description to database table /GBT/D_CODE_GEN.....      | 37 |
| 6     | Extension of ALE / IDOC.....                                  | 39 |
| 6.1   | Configure use of an IDOC Inbound Function Module in GBT.....  | 39 |
| 7     | Altering the Network Query.....                               | 39 |
| 7.1   | BAdI /GBT/EX_NW_DB_QUERY.....                                 | 39 |
| 8     | Extent Network Views (Filter and Aggregation).....            | 39 |
| 8.1   | Introduction.....   | 39 |
| 8.2   | Define Simplifications for Filtering.....                     | 40 |
| 8.3   | Define Simplifications for Aggregating.....                   | 41 |
| 8.4   | Define Views for Filtering and Aggregation.....               | 41 |
| 8.5   | Define a Default Network View.....                            | 42 |
| 9     | Enable custom Use Cases with Reports and Worklists.....       | 42 |
| 9.1   | Custom reports in GBT UIs.....                                | 42 |
| 9.2   | Dynamical determined Worklist Items.....                      | 44 |
| 9.3   | Creating a (static) worklist and adding items via report..... | 46 |
| 9.4   | Custom actions in GBT Worklist.....                           | 48 |
| 10    | Enhancement of Network Graphic.....                           | 49 |
| 10.1  | Modification of node label and mouse overview.....            | 49 |
| 10.2  | BAdI /GBT/EX_UI_NW_GFX.....                                   | 49 |

- 11 Important GBT Classes and Examples .....50
  - 11.1 Example for Maintain and Extract methods.....51
  - 11.2 Example for setting appended fields.....53
- 12 Use of Implicit Enhancements .....54
- 13 SOA Service Enhancement.....54
  - 13.1 SOA Inbound Services.....54
  - 13.2 SOA Outbound Service.....58
    - 13.2.1 Enhancement of the identifier tagging.....59
    - 13.2.2 Enhancement of the TrackedGoodsMovementNotification\_Out interface .....61
- 14 Create URLs to access GBT-UI.....66
  - 14.1 URL Schema to Display Batches.....66
  - 14.2 URL Schema to Display a Worklist Items.....67
  - 14.3 URL Schema to prefill search fields for Batches or HUs.....67
    - 14.3.1 Rules to define Search Parameter Names.....67

# 1 Introduction

[SAP Global Batch Traceability](#) offers a repository for the genealogy of batches, a partial quantity for a material respectively product.

The genealogy has the relation (aka GBT-Events) between different batches and / or business documents which occurs in the supply chain.

The focus of this document is to describe how the [GBT](#) genealogy and the business objects shown in the genealogy graph can be extended.

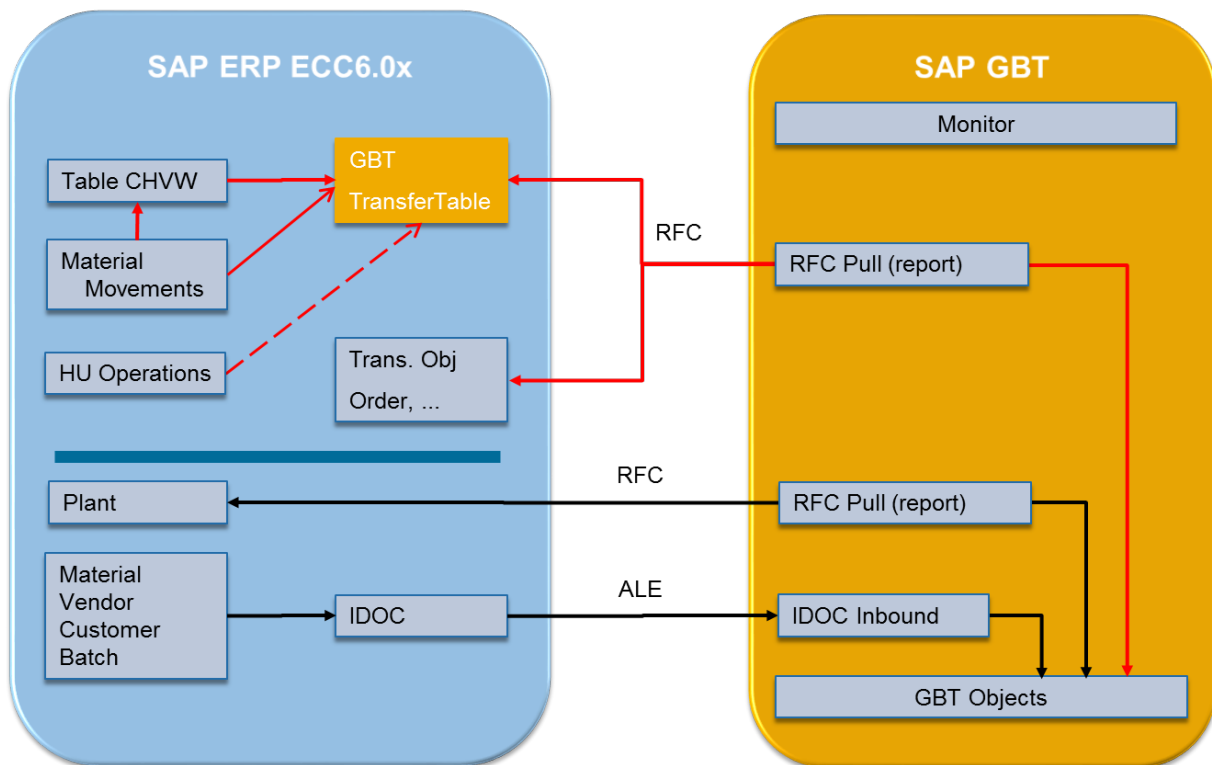
Tip: See also [Note 1257033 - Cookbook: Modification/enhancement for standard SAP system](#).

Please also feel free to check [GBT on SCN](#).

## 1.1 Architecture Overview of GBT

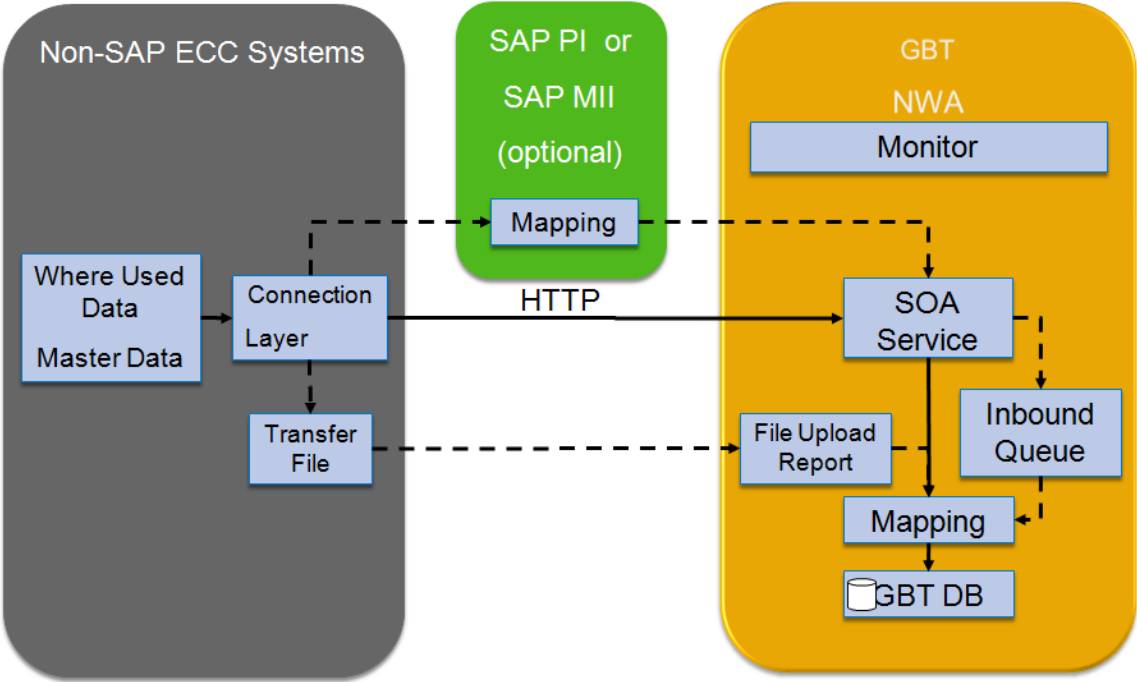
GBT supports integration to ERP600 and S/4HANA out of the box. The GBT business documents are tailored to store the GBT relevant attributes of an ERP Business document. Specific attributes which are part of a customer SAP-ERP implementation naturally not supported out of the box and may be needed to be added to GBT.

The following diagram shows the principals integration with SAP ERP (same for S/4HANA):



- Note: Events only triggered if the Plant is registered to send GBT-Events. To generate GBT-Events for HUs an additionally registration is needed. The HU-Events are separated and independent from Material Movements generated within BAdi BADI\_HU\_SAVE.

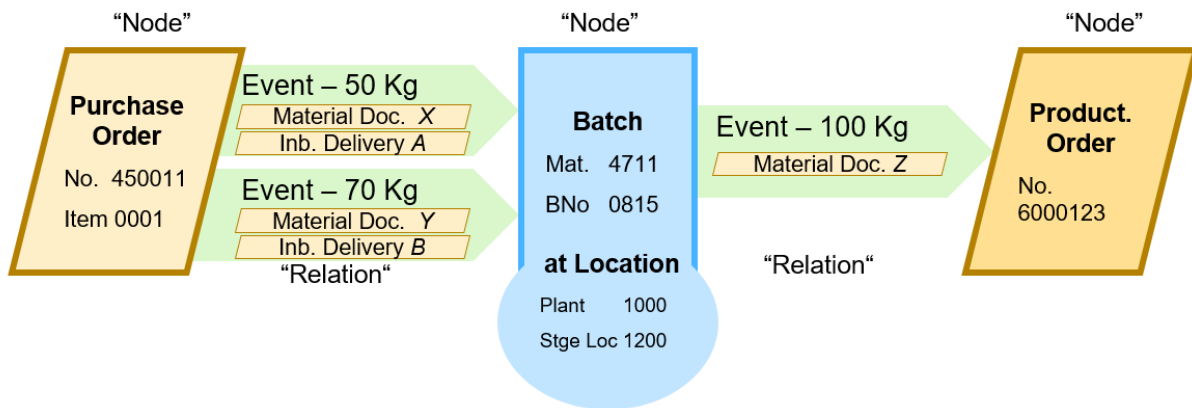
If a non-SAP-ERP system should be connected to GBT it is quite likely that the ERP business documents not fit. Therefore, it is also possible to extent the object model in GBT.



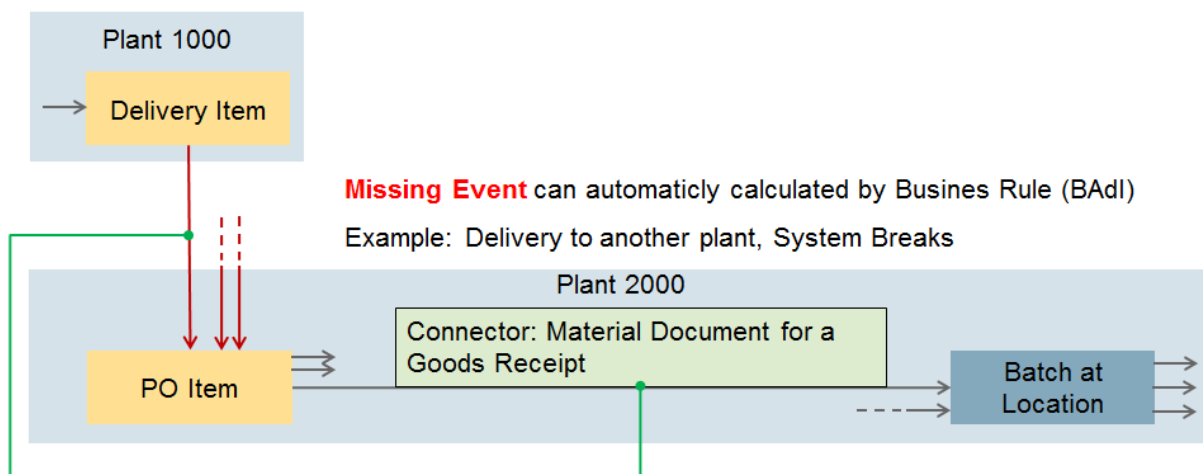
## 1.2 Data Model of GBT

The following picture shows the structure of GBT Events. A GBT Event is a directed relation between 2 objects. The trigger for the Event is a connector object which links the 2 objects together.

Section of a Network (example):



Remark: In some cases, especially for object Production Order or Purchase Order Items, several incoming and outgoing events are possible. There can be a relation between one incoming event to one outgoing event and not to others. To model this, the events can be tied together.



**TIE for Events** needed if incoming and outgoing Events needs to be paired.

Example: Purchase Order can be fulfilled by multiple Deliveries and so has multiple Goods Receipts. But one Delivery triggers one Goods Receipt.

Implementation Detail: The Tie is realised as ordered group (or path) of 3 Objects: From-,Middle-,To-Object.

### 1.2.1 List of Objects in the GBT-Network

| GBT Tracing Object (TRC) |  | /GBT/<br>C_TRC_OBJ | Class               | Table           | Comments                                    |
|--------------------------|--|--------------------|---------------------|-----------------|---|
| Node                     | Batch at Location                      | BAT                | /GBT/CL_TRC_BO_BAT  | /GBT/O_BAT_ITM  | Not a Document                              |
|                          | Delivery Item (Outbound)               | DIO                | /GBT/CL_TRC_BO_DLIO | /GBT/O_DLVY_ITM | Incl. Delivery Ship-To-Address              |
|                          | Customer Returns Delivery Item         | DRC                | /GBT/CL_TRC_BO_DRIC | /GBT/O_DLVY_ITM |   |
|                          | Goods Issue Posting                    | GIP                | /GBT/CL_TRC_BO_GIPD | /GBT/O_MDOC_ITM | "To-Nirvana"- Object                        |
|                          | Goods Receipt Posting                  | GRP                | /GBT/CL_TRC_BO_GRPD | /GBT/O_MDOC_ITM | "From-Nirvana"- Object                      |
|                          | Handling Unit at Location              | HUT                | /GBT/CL_TRC_BO_HUT  | /GBT/O_HUT_ITM  | Not a Document<br>Business Function /GBT/HU |
|                          | Document Details Not Available         | NAD                | /GBT/CL_TRC_BO_NADA | /GBT/O_NADA     | Key-completion not possible (deleted)       |
|                          | Production- / Process Order            | POR                | /GBT/CL_TRC_BO_PORD | /GBT/O_PORD_HDR | only Header - no Item                       |
|                          | Purchase Order Item                    | PUI                | /GBT/CL_TRC_BO_PURI | /GBT/O_PURO_ITM |   |
|                          | Return Purchase Order Item to Vendor   | RPI                | /GBT/CL_TRC_BO_RPUI | /GBT/O_PURO_ITM |   |
| Primary Connector        | Administr. Data of GBT Internal Events | ADI                | /GBT/CL_TRC_BO_ADIN | /GBT/O_ADIN     | Created by BAdI or manual created links     |
|                          | HU Operation                           | HDC                | /GBT/CL_TRC_BO_HDOC | /GBT/O_HDOC_HDR | Document of GBT Business Function /GBT/HU   |
|                          | Material Document Item                 | MDI                | /GBT/CL_TRC_BO_MDIT | /GBT/O_MDOC_ITM |   |
| Secondary Connector      | Delivery Item (Inbound)                | DII                | /GBT/CL_TRC_BO_DLII | /GBT/O_DLVY_ITM |   |
|                          | Returns Order Item                     | ROI                | /GBT/CL_TRC_BO_RORI | /GBT/O_SALO_ITM |   |
|                          | Sales Order Item                       | SAI                | /GBT/CL_TRC_BO_SALI | /GBT/O_SALO_ITM |   |

Remark:

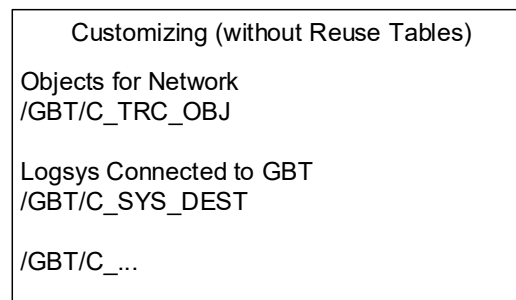
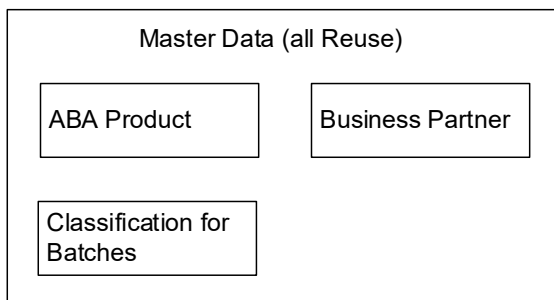
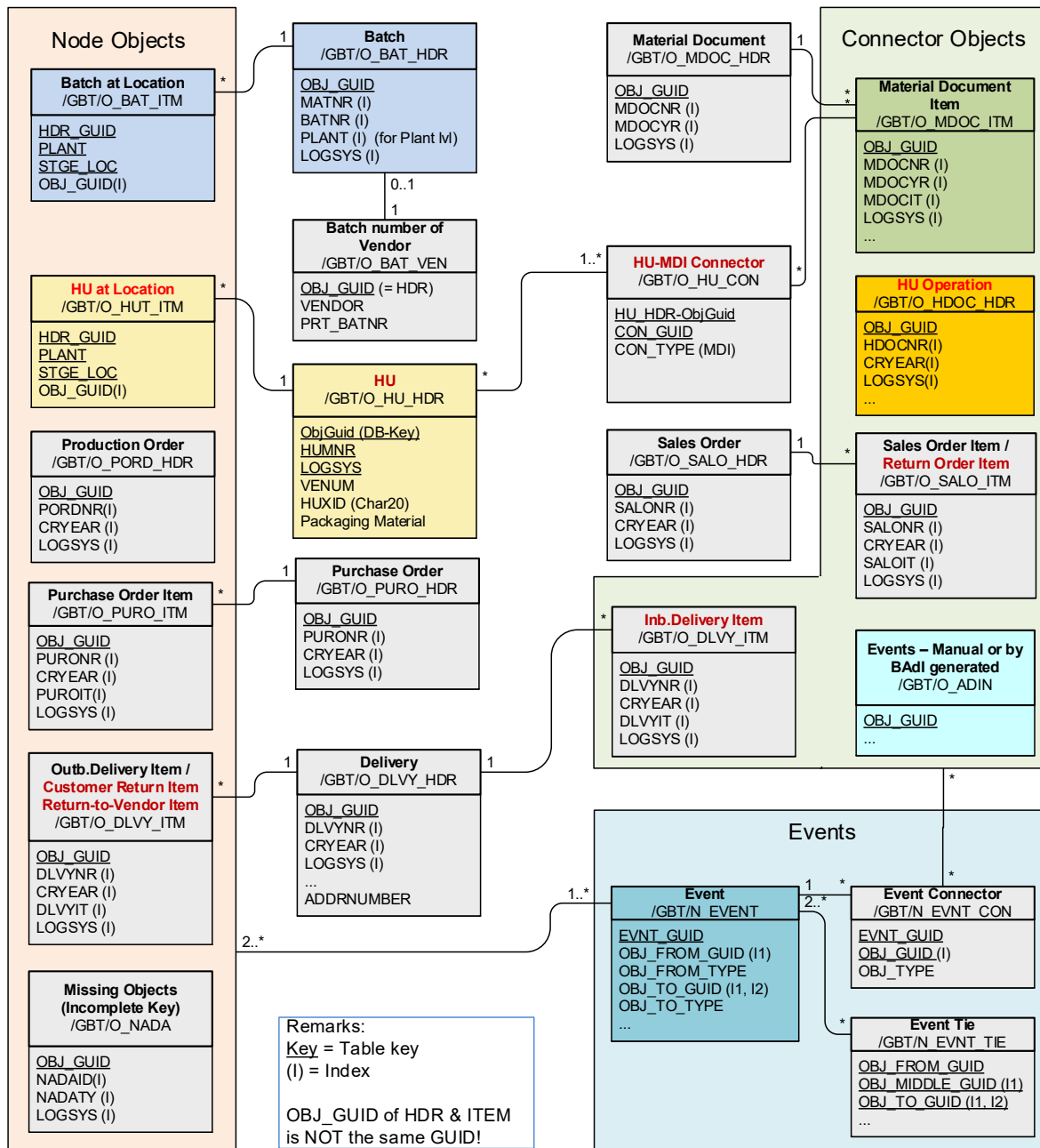
- Heterogeneous Business Objects used to build up the Network
- No editing of Business Objects within GBT
- Business Document fit into the Network either as Node or Connector
- From-,To-Node (+Connector) used as Event Identification
- Business Documents (Business Objects) from several Systems (SAP, Non-SAP)
- "Primary Connector" is the primary data for an Event and used also as Identification part for Events
- "Secondary Connectors" are additional data for the Event

Attention: If additional objects are implemented the implementation slightly changed between GBT 2.0 and GBT 3.0.

Please see implementation of [New Business Documents](#)



Database tables of GBT

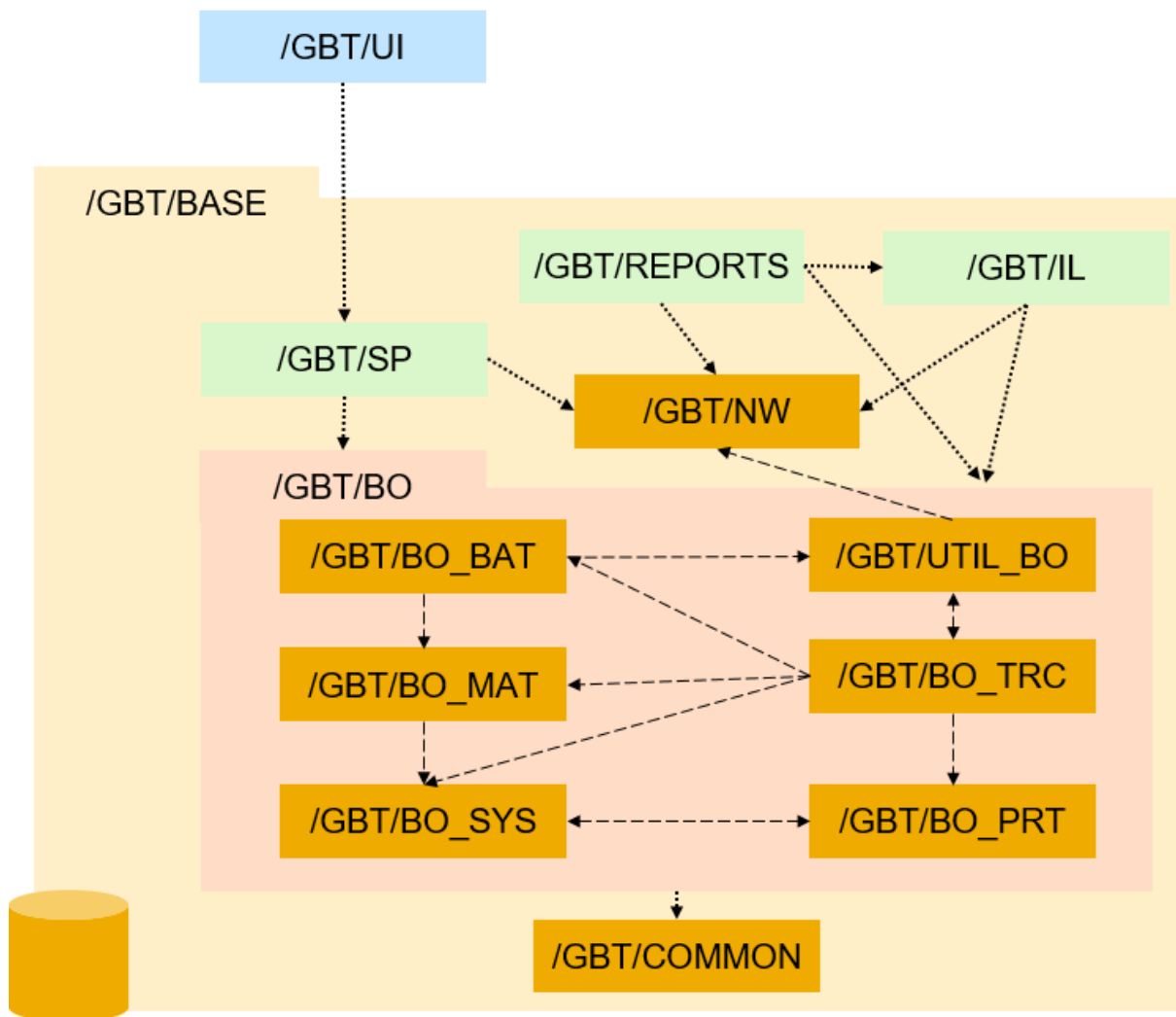


NEW Object Types GBT2.0 (FP2) (different Obj.Types can share same Table (like modeled in ERP))

Only in case the Business Function for HUs is switched on the tables /GBT/HU\_CON and /GBT/HU\_HDR are used.

### 1.3 Package Structure GBT

GBT has two Structure Packages /GBT/BASE and /GBT/UI. /GBT/BASE owns the Data model (BOs like Material etc. and the Network), the Integration Layer (for IDocs, WebService, Event Collector, ...), the Reports and the Service Provider for the ABAP WebDynpro UI. The ABAP WebDynpro UI is part of Structure package /GBT/UI.



Remarks:

- The Package Structure Figure shows not all Packages but should give an impression on the relation between the packages.
- The /GBT/XX packages are “Main Packages” which itself contain other packages.
- The packages /GBT/SP, /GBT/REPORTS, /GBT/IL and all their sub-packages have not directly to manage persistency (DB-Tables) and therefore got a different color.

## 2 Overview of Extensibility in GBT

### 2.1 Object Extensibility

Batch master extensibility is provided by using classification.

Master Data Implementation in GBT reuses the standard implementation of the ABA-layer (nothing additional for GBT): Product, Business partner

If more data from [IDOC](#) are needed to store in GBT you can

- for Product (MATMAS, /GBT/MATMAS) implement the [BAdI /GBT/EX\\_IL\\_MATMAS](#) where the Enhancements can be done.
- In any case, it is also possible to create a new IDOC Inbound function module (existing GBT FM can be copied and enhanced) and exchange the GBT-IDOC-FM by the new IDOC-FM.

For an extension of ALE / IDOC for inbound processing in GBT see [here](#).

Extensibility of other Business documents (used in the GBT Network):

Field extensibility of existing business documents supported by customer includes.

New business documents need to be registered in GBT with their access class.

Integration from ERP needs to be extended by implementing a BAdI in GBT and offer an Access Class in ERP and enhance data of GBT-Events in ERP or also trigger new GBT-Events.

The integration to a non-SAP ECC System can be done via [SOA Service\(aka Webservice\)](#) as well as File import. (Remark: The SOA Service is recommended).

Out-of-the box this is possible for the GBT-Events which build up the genealogy network.

To get details of the Business documents from a non-SAP ERP system is also task of a GBT implementation project.

The UI is based on [Floor Plan Manager \(FPM\)](#) for [WebDynpro ABAP](#). For the Graphic in GB30 Javascript with D3 is used ([Microsoft Silverlight](#) before GBT 3.0). For changes of the WebDynpro UI mainly the FPM configuration needs to be adapted. The [SPI-Framework](#)<sup>1</sup> is used to feed the FPM UI ([Generic UI Building Block \(GUIBB\)](#)). The graphic is embedded into WebDynpro with [HTMLIsland](#) (for Silverlight see [WebDynpro Island for Silverlight](#)) and is able to displays all objects out-of-the box if they are integrated in the Network.

---

<sup>1</sup> For getting started with SPI you can check the [SPI-Tutorial](#).

## 2.2 Process Extensibility

In principle, the following topics may be needed to implement a specific process with GBT:

- Add new Reports, which can be called from Batch Search and Worklist via FPM Launchpad.
- Add Actions to Worklist which can be triggered from UI.
- Navigate to other UIs / ERP Transactions via FPM Launchpad in GBT
- Create a simplification view

The following examples should give an impression how to use these kinds of extension to implement a process.

### 2.2.1 Extensions to integrate with QM

- Navigate from SAP GBT batch details screen to the display of **QM notifications** for a batch in SAP ERP (GBT customizing only)

Hint: use Transaction /GBTINT/LIST\_QM\_NOTE (in ERP)

- Navigate from SAP GBT batch details screen to the display of **inspection lots** for a batch in SAP ERP (GBT customizing only)
- Create quality notifications in SAP ERP or SAP QIM starting from the worklist in GBT

Hint: The title of the Worklist may correspond to the text of the QM notification.

### 2.2.2 Extensions to restrict Batches

A RFC-enabled Function module in ERP (e.g. 'BAPI\_BATCH\_SAVE\_REPLICA) can be called to set a batch to status 'restricted'. This can either be achieved by a report or from a Worklist-Action.

### 2.2.3 Extensions to show usage decisions in Network Graphic

Display available usage decisions in SAP GBT graphical view using color codes (reads data using BAPIs in ERP). See therefore [BAAd /GBT/EX\\_UI\\_NW\\_GFX](#).

- Collect all inspection lots available for the batch from SAP ERP
- Read the usage decision data for each inspection lot from SAP ERP
- Build an aggregated status for the batch
- Color the batch nodes in the graphical UI

Recommendation: This may be time consuming and not always needed. Therefore, only if a specific Simplification Views is chosen the coding within GBT/EX\_UI\_NW\_GFX should be executed.

For additional reporting enhancements see [here](#).

## 3 Batch Master

The GBT implementation of the Batch Master uses the [classification](#) (CA-CL) as well as the ERP Batch implementation. The classification is the main enhancement possibility for additional Batch attributes. This includes a fully integration into the GBT Batch search functionality as well as visibility in the Batch Details UI.

The classification master data ([classes and characteristics](#)), the classification of batches and the batches itself are integrated from ERP with ALE / IDOC.

### 3.1 Mapping of Class and Characteristic for Classification

If multiple systems provide their characteristics and classes, it may be needed to distinct same names which are defined in different Systems differently. To do so the GBT offers the BAdI /GBT/EX\_CLF\_MAPPING

(Customizing Path: Cross-Application Components -> SAP Global Batch Traceability -> Business Add-Ins (BAdIs) for SAP GBT -> Integration -> BAdI: Mapping of Class and Characteristic for Classification)

The 'LOBM'-Characteristics are delivered as 'SAP\_GBT': To get them use report /GBT/R\_COPY\_STANDARD\_CHARS to copy them into the current client.

### 3.2 Extend the Batch Master in GBT

To see the additional fields in the Table view or Batch Detail screen a new configuration of the ABAP-WebDynpro and Floor Plan Manager (FPM) configuration is needed. For details see [here](#).

To add fields to the Batch master it is recommended to use classification.

#### 3.2.1 Extend by Classification

Classification is the standard way to enhance a Batch with additional attributes (aka characteristics).

The Batch Characteristics are only displayed in the Batch Detail screen. As a precondition to display them also in Graphic and/or Table-View the needed characteristics must be added to the Include CI\_BAT\_CHR.

For example: Assume the internal value for a characteristic, let say COLOUR, is '3' and the textual value is 'purple'. The field COLOUR (same name as the characteristic) needs to be added to CI\_BAT\_CHR and the data element should have the size to contain the textual value.

Instead of adding a new field to CI\_BAT\_CHR also a structure can be included which contains ONE characteristic. The GROUP name of this structure must be equal to the characteristic name. This approach is needed in two cases:

1. If the Characteristic name is not allowed as fieldname (e.g. the hyphen '-' is not allowed ) a structure must be used. The structure contains only one field, with a freely defined name to get the textual value.
2. If beside the textual value also the internal value is needed. The 1<sup>st</sup> field of the structure has to be the text field and the 2<sup>nd</sup> field has to be the value field. The names of the structure and the fields in this structure can be freely defined e.g. structure ZMY\_COLOUR with fields COLOUR\_TXT and COLOUR\_VAL. If the value has a Unit (or Currency) this must be the 3<sup>rd</sup> field.

#### 3.2.2 Extension of Batch Table

##### 3.2.2.1 Extension of Batch Table /GBT/O\_BAT\_HDR

There are also in some rare cases it may be needed to extend the Batch Master table in GBT. Therefore, the database table /GBT/O\_BAT\_HDR has an include structure (customer Include):

---

PUBLIC: Extensibility of SAP Global Batch Traceability (SAP GBT)

CI\_BAT\_ATT. This structure must be created with the missing attributes. To fill these attributes in ALE Integration the segment E1BPBNCOMZ in ERP (and the corresponding segment /GBT/E1BPBNCOMZ in GBT) can be extended by using [WE31](#). If the attributes of the segment /GBT/E1BPBNCOMZ exists with the same name in CI\_BAT\_ATT, they will be copied by function module /GBT/IL\_IDOC\_IN\_BATMAS.

For an extension of ALE / IDOC for inbound processing in GBT see [here](#).

### 3.2.2.2 Extension of Batch Table /GBT/O\_BAT\_ITM

The database table /GBT/O\_BAT\_ITM contains the Plant /Storage location specific entries. GBT has by standard no attributes on this level. But there is a 'customer include': CI\_BAT\_ITM\_ATT. To fill this from ERP the BAdI /GBT/EX\_IL\_LOAD\_DETAIL can be implemented for object type BAT.

## 3.3 Search for Batches

You can search for batches at a location by entering the batch number in the quick search or using the 'Search for Batches' which allows a combination of several attributes. If an attribute is not offered as search criteria to 'Search for Batches', it can be added.

The Batch Search Screen, Global Batch Traceability 2.0 provides the following search criteria:

- *Batch*
  - Batch Number (BATNR)
  - Material Number (MATNR)
  - Plant (PLANT)
  - Logical System (LOGSYS)
  - Vendor Batch Number (PRT\_BATNR)
- *Material*
  - Material Description (MATERIAL\_DESCR)
- *Product Group*
  - *Any Product Group defined is added dynamically*
- *Handling Unit (Only offered if Business function /GBT/HU\_SFWS is switched on)*
  - Handling Unit (HUMNR)
  - Packaging Material (PACK\_MAT)
  - Warehouse (WHSENUMBER)
  - WM Transfer Order (WMTONR)
- *Delivery*
  - Ship-To Party (SHIP\_TO)
  - Sold-To Party (SOLD\_TO)
  - Actual Goods Issue Date (GI\_DATE)
- *Material Document*
  - Posting Date (PSTNG\_DATE)
  - Movement Type (MOVE\_TYPE)
- *Characteristics*

*Added dynamically (can be defined by creating batch class GBT\_SEL\_CRITERIA as described in SAP note 1870447)*

### 3.3.1 Add new Search Criteria to 'Search for Batches'

Create an implementation for BAdI definition /PLMB/EX\_SPI\_METADATA\_DYN in Enhancement Spot /PLMB/ES\_SPI and implement method /PLMB/IF\_EX\_SPI\_METADATA\_DYN~GET\_NEW\_NODE\_DEFINITION to define the additional search criteria.

#### 3.3.1.1 Prefix for Search Criteria

To enable the query to identify the object to which the field belongs to, a prefix is used in the technical name of the new search criterion. The prefix is used to define the object and therefore the query path for specific criteria.

The following prefixes (plus separator '%') must be used for the different object types in the batch search:

- *Batch search attributes: SAP% (use 'BAT' as parameter for method BUILD\_BATCH\_SEL\_ATTR\_DESCR)*

Attributes of network objects used in search:

- *Handling Unit: HUX% (use 'HUT' as parameter for method BUILD\_BATCH\_SEL\_ATTR\_DESCR)*
- *Delivery: DLV% (use 'DIO' as parameter for method BUILD\_BATCH\_SEL\_ATTR\_DESCR)*
- *Material Document: MDI%*
- *Purchase Order: PUI%*
- *Production Order: POR%*
- *Sales Order: SAI%*

*... and other existing Object types (plus separator %)*

Additional prefix which can be used for enhancements which needs customer specific selections

- *Material: MAT% (see method /GBT/CL\_MAT\_BO\_UTIL-> ENHANCE\_SEL\_PARAM)*

**Attention:** It may be that some combinations of search criteria are not possible and the error message "Selection path is too complex" occurs.

See the example where the different prefixes, separated by '%' from the fieldname of the criteria internal fieldname, are used in variable *ls\_component-name*.

#### 3.3.1.2 Sorting of Search Criteria

The sequence of the search criteria is defined first by the number in field *ls\_component\_detail-description\_s* and then by the text in field *ls\_component\_detail-description\_l*.

By default, the following search criteria (related to a batch) are sorted first by using field *ls\_component\_detail-description\_s*:

- *Batch Number*
- *Material Number*
- *Material Description*
- *Plant*

All other search criteria are sorted alphabetically by field *ls\_component\_detail-description\_l*.

### 3.3.1.3 Example how to enhance Batch Search Criteria

The following example describes how to add the fields

- *PROD\_DATE* (Date of Manufacture from Batch)
- *VENDOR* (Vendor from Purchase Order)
- *ORDER\_CATG* (Order Category from Production Order)

to the batch search.

The example also shows how to remove the search criteria *PSTNG\_DATE* (Posting Date from Material Document) if you do not want to provide it to the users.

Create the following coding in method

/PLMB/IF\_EX\_SPI\_METADATA\_DYN~GET\_NEW\_NODE\_DEFINITION:

```
METHOD /plmb/if_ex_spi_metadata_dyn~get_new_node_definition.

DATA:
  ls_component          TYPE /plmb/s_spi_component_descr,
  ls_component_detail  TYPE /plmb/s_spi_criteria_details.

FIELD-SYMBOLS:
  <ls_query_def> LIKE LINE OF cs_metadata_node-queries-sp.

*****
* Batch specific additional selection criteria
*****
READ TABLE cs_metadata_node-queries-sp ASSIGNING <ls_query_def>
  WITH KEY query_name = /gbt/cl_nw_mp=>gc_query_name-batch_by_char.
IF sy-subrc = 0.

* Batch: 'Date of Manufacture'
CLEAR ls_component.
CLEAR ls_component_detail.
ls_component-name = 'SAP%PROD_DATE'.
ls_component-type = '/GBT/BAT_PROD_DATE'.
APPEND ls_component TO <ls_query_def>-definition-criteria-components.
ls_component_detail-name = ls_component-name.
ls_component_detail-description_s = '100'.
ls_component_detail-
description_l = /gbt/cl_spi_util=>get_data_element_description( ls_compon
ent-type ).
/gbt/cl_nw_mp=>build_batch_sel_attr_descr(
  EXPORTING
    iv_obj_type = 'BAT'
  CHANGING
    cv_description = ls_component_detail-description_l ).
ls_component_detail-
options = /gbt/cl_spi_util=>fill_char_select_options( ).
INSERT ls_component_detail INTO TABLE <ls_query_def>-definition-
criteria-component_details.

* Purchase Order: 'Vendor'
CLEAR ls_component.
CLEAR ls_component_detail.
ls_component-name = 'PUI%VENDOR'.
ls_component-type = '/GBT/VENDOR'.
APPEND ls_component TO <ls_query_def>-definition-criteria-components.
ls component detail-name = ls component-name.
```



```

ls_component_detail-description_s = '100'.
ls_component_detail-
description_l = /gbt/cl_spi_util=>get_data_element_description( ls_compon
ent-type ).
/gbt/cl_nw_mp=>build_batch_sel_attr_descr(
EXPORTING
iv_obj_type = 'PUI'
CHANGING
cv_description = ls_component_detail-description_l ).
ls_component_detail-
options = /gbt/cl_spi_util=>fill_char_select_options( ).
INSERT ls_component_detail INTO TABLE <ls_query_def>-definition-
criteria-component_details.

* Production Order: 'Order Category'
CLEAR ls_component.
CLEAR ls_component_detail.
ls_component-name = 'POR%ORDER_CATG'.
ls_component-type = 'AUFTYP'.
APPEND ls_component TO <ls_query_def>-definition-criteria-components.
ls_component_detail-name = ls_component-name.
ls_component_detail-description_s = '100'.
ls_component_detail-
description_l = /gbt/cl_spi_util=>get_data_element_description( ls_compon
ent-type ).
/gbt/cl_nw_mp=>build_batch_sel_attr_descr(
EXPORTING
iv_obj_type = 'POR'
CHANGING
cv_description = ls_component_detail-description_l ).
ls_component_detail-
options = /gbt/cl_spi_util=>fill_char_select_options( ).
INSERT ls_component_detail INTO TABLE <ls_query_def>-definition-
criteria-component_details.

* Remove Material Documents Posting Date
DELETE <ls_query_def>-definition-criteria-components
WHERE name = 'MDI%PSTNG_DATE'.
DELETE TABLE <ls_query_def>-definition-criteria-component_details
WITH TABLE KEY name = 'MDI%PSTNG_DATE'.

ENDIF.

ENDMETHOD.

```

### 3.3.2 Adapt batch specific search criteria

To adapt 'SAP%' criteria just before used for batch search they can be checked and modified in Method /GBT/CL\_BAT\_BO->ENHANCE\_SEL\_PARAM. In case the criteria 'material number' needs to be adapted check also if the Method /GBT/CL\_MAT\_BO\_UTIL-> ENHANCE\_SEL\_PARAM needs to be adapted.

### 3.3.3 Enhance Search result with additional Attributes

In case that additional attributes, which have no further relevance in other UIs, should only be shown in the search result list, an additional enhancement option is possible.

First the node-structure needs to be enhanced and second the Ui component.

The attributes should directly (not as part of an include) added to the Node-Structure using an append structure (see [here](#)).

To set the attribute values for the search result list the method AFTER\_RETRIEVE of BAdI interface /PLMB/IF\_EX\_SPI\_APPL\_ACCESS can be used.

Remark: Method AFTER\_QUERY is also called but a retrieve is done to get the details. Therefore, changes to the output data in method AFTER\_QUERY may not have an effect.

To enhance the UI component, see [UI extension - field enhancement](#).

### 3.3.4 Predefined Search Patterns

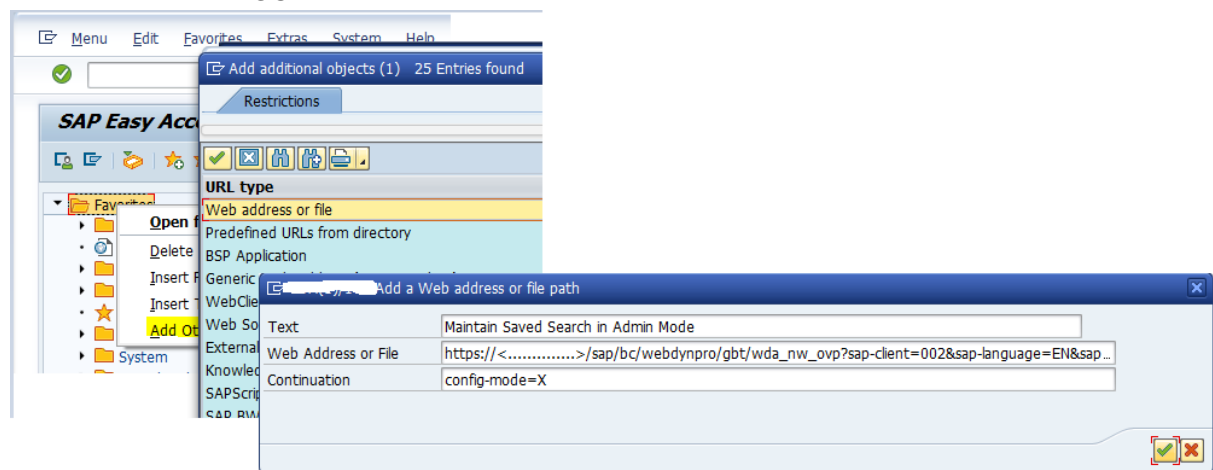
As of NetWeaver release 7.40 SP03, FPM offers the possibility to store predefined Searches.

You need to run a WD-application explicitly in administrative mode

To do this, proceed as follows:

- Open transaction SE80.
- In the Object Navigator navigate to the relevant Applic. Configurations folder and double-click an application configuration inside it.
- In the main menu bar, choose *Web Dynpro Configuration* → *Test* → *Execute in Administration Mode*.
- The application is opened in administrator mode; check if the Customizing Mode banner is displayed above the title bar.

Tip: The URL used with Web Dynpro can be added as short cut to the Favorite of the Administrators SAP-GUI-Menu



How to add an URL as Favorite to the SAP-GUI-Menu

Remark: The URL is expected to be longer than one line => fill line "Web address or file" up to the end AND insert the trailing missing part into the line "Continuation".

## 3.4 Search for Handling Units

You can search for handling units using the 'Search for Handling Units' which allows a combination of several attributes. If an attribute is not offered as search criteria, it can be added.

The Handling Unit Search Screen, Global Batch Traceability 2.0 provides the following search criteria:

- *Handling Unit*
  - Handling Unit (HUMNR)
  - Created On (CREATED\_DATE)
  - Created By (CREATED\_BY)
  - Plant (PLANT)
  - Storage Location (STGE\_LOC)

- Logical System (LOGSYS)
- Packaging Material (PACK\_MAT)
- Pack. Material Descr. (PACK\_MAT\_DESCR)
- Source Handling Unit (HUMNR\_ORIG)
- *Batch*
  - Batch Number (BATNR)
  - Material Number (MATNR)
  - Material Description (MATERIAL\_DESCR)
- *Delivery*
  - Delivery (DLVYNR)
  - Ship-To Party (SHIP\_TO)
  - Sold-To Party (SOLD\_TO)
  - Actual Goods Issue Date (GI\_DATE)
- *HU Operation*
  - HU Operation Type (HU\_OP\_TYPE)

### 3.4.1 Add new Search Criteria to 'Search for Handling Units'

In general, the same logic for adding and deleting search criteria in the batch search also applies to the handling unit search.

The following prefixes (plus separator '%') must be used for the different object types in the handling unit search:

- *Handling Unit search attributes: SAP% (use 'HUT' as parameter for method BUILD\_BATCH\_SEL\_ATTR\_DESCR)*

Attributes of network objects used in search:

- *Batch: BAT%*
- *Delivery: DLV% (use 'DIO' as parameter for method BUILD\_BATCH\_SEL\_ATTR\_DESCR)*
- *HU Operations: HDC%*

In the handling unit search, the search criteria *Handling Unit* is sorted first by using field *ls\_component\_detail-description\_s*.

Hint: Enhance Search result with additional Attributes is like Batch e.g. [Enhance Search result with additional Attributes](#).

#### 3.4.1.1 Example how to enhance Handling Unit Search Criteria

The following example describes how to add the field HUTYPE (Handling Unit Type) to the handling unit search.

Create the following coding in method  
/PLMB/IF\_EX\_SPI\_METADATA\_DYN~GET\_NEW\_NODE\_DEFINITION:

```
METHOD /plmb/if_ex_spi_metadata_dyn~get_new_node_definition.

DATA:
  ls_component          TYPE /plmb/s_spi_component_descr,
  ls_component_detail  TYPE /plmb/s_spi_criteria_details.

FIELD-SYMBOLS:
```

```

<ls_query_def> LIKE LINE OF cs_metadata_node-queries-sp.

*****
* HU specific additional selection criteria
*****
  READ TABLE cs_metadata_node-queries-sp ASSIGNING <ls_query_def>
    WITH KEY query_name = /gbt/cl_nw_mp=>gc_query_name-hut_default.
  IF sy-subrc = 0.

*   Handling Unit: 'Handling Unit Type'
  CLEAR ls_component.
  CLEAR ls_component_detail.
  ls_component-name = 'SAP%HUTYPE'.
  ls_component-type = '/GBT/HU_VHART'.
  APPEND ls_component TO <ls_query_def>-definition-criteria-components.
  ls_component_detail-name          = ls_component-name.
  ls_component_detail-description_s = '100'.
  ls_component_detail-
description_1 = /gbt/cl_spi_util=>get_data_element_description( ls_compon
ent-type ).
  /gbt/cl_nw_mp=>build_batch_sel_attr_descr(
    EXPORTING
      iv_obj_type = 'HUT'
    CHANGING
      cv_description = ls_component_detail-description_1 ).
  ls_component_detail-
options = /gbt/cl_spi_util=>fill_char_select_options( ).
  INSERT ls_component_detail INTO TABLE <ls_query_def>-definition-
criteria-component_details.

  ENDIF.

ENDMETHOD.

```

## 4 Network Objects of Batch Genealogy Network

The GBT Batch genealogy consists of Batches and business document such as Purchase Order, Production or Process Order or Outbound-Delivery. The business document items and Batches at a specific Plant/ Storage Location are the nodes in the network. The relations between these nodes based on GBT-Events which derived mainly from Material Documents Items as primary connector. Also, supplemental connectors like Sales Order can be assigned to an Event to hold further information in GBT.

Remark: all the Objects in the Batch Genealogy Network are defined by an Object type and a GUID.

### 4.1 Extension of received GBT-Events (BAdI)

It may be needed to provide new Events in GBT which are not coming from an external system but which can be provided by GBT. An example is Cross System Scenario where a single Systems only provides its objects but the linkage (GBT-Event) can be calculated in GBT.

You can use example BAdI implementation /GBT/EX\_IL\_BATCH\_TIE\_X\_STO to create additional event links across stock transfer order items to link received batch and issued batch by batch and material number. Furthermore, you can use example BAdI implementation /GBT/EX\_IL\_EVENT\_ENHANCE to create additional events to link delivery item and purchase order item imported from different systems.

Terminology explanation:

**Event:** Represents a goods movement booking step in the connected system. It connects two objects that are relevant for the network with a booking step.  
 Example: You have a batch 4711 of product STEEL\_123 for a delivery item 10 of a delivery 800001. You book a goods issue event at time 1 about 10 pieces and a goods issue event at time 2 about 50 pieces. As a result two events are created.

**Event link:** A link between 2 relationships and connects 3 network objects

For details about the BAdI, check the documentation and example implementation of the BAdI /GBT/EX\_IL\_EVENT\_ENHANCE (for an example of an implementation see section [Important GBT Classes](#)).

## 4.2 Extension of business documents

### 4.2.1 Field extension

Two types of field extensions are needed. Fields for object attributes which needs to be stored additional in the DB and fields for linked attributes which are already stored in GBT like e.g. a description for a field value.

#### 4.2.1.1 Field extension with DB table enhancement

All Business documents can be extended by customer includes on header database table as well as on the item database table. To see the additional fields in the details-screen a new WebDynpro configuration of the specific details-screen needs to be created.

Database tables and the related customer include:

| Business Documents                 | Header           |                  | Item             |                  |
|------------------------------------|------------------|------------------|------------------|------------------|
|                                    | DB Table         | Customer Include | DB table         | Customer Include |
| <b>Material Document</b>           | /GBT/O_MDOC_HDR  | CI_MDOC_ATT      | /GBT/O_MDOC_ITM  | CI_MDOC_ITM_ATT  |
| <b>Purchase Order</b>              | /GBT/O_PURO_HDR  | CI_PURO_ATT      | /GBT/O_PURO_ITM  | CI_PURO_ITM_ATT  |
| <b>Production or Process Order</b> | /GBT/O_PORD_HDR  | CI_PORD_ATT      | -                | -                |
| <b>Delivery</b>                    | /GBT/O_DLVEY_HDR | CI_DLVEY_ATT     | /GBT/O_DLVEY_ITM | CI_DLVEY_ITM_ATT |
| <b>Sales Order</b>                 | /GBT/O_SALO_HDR  | CI_SALO_ATT      | /GBT/O_SALO_ITM  | CI_SALO_ITM_ATT  |
| <b>Batch at a Location</b>         | -                | -                | /GBT/O_BAT_ITM   | CI_BAT_ITM_ATT   |

**Attention:** Same named attributes in Customer Include for header table and item table are not allowed!

#### 4.2.1.2 UI specific field extension without DB table enhancement

All Business documents can be extended without DB extension by an append-structure to the related 'Node'-structure used for UI. To see the additional fields in the detailed screen a new WebDynpro configuration of the specific detailed screen needs to be created.

To fill these new append fields additional logic can be placed in the read method /GBT/IF\_TRC\_OBJ~GET\_UI\_DATA\_BY\_GUID of the class /GBT/CL\_TRC\_BO\_<...> as [Implicit Enhancements](#).

| Business Document | DDIC Structure for UI  | Internal used read method /GBT/IF_TRC_OBJ~GET_UI_DATA_BY_GUID of Class |
|-------------------|------------------------|--|
| <b>Batch</b>      | /GBT/S_BAT_NODE_STRUCT | /GBT/CL_TRC_BO_BAT   |

|                                    |                         |  |
|------------------------------------|-------------------------|--|
| <b>Batch Characteristics</b>       | CI_BAT_CHR              | (see <a href="#">Remark to Batch Characteristic</a> below) |
| <b>Material Document Item</b>      | /GBT/S_MDIT_NODE_STRUCT | /GBT/CL_TRC_BO_MDIT  |
| <b>Purchase Order Item</b>         | /GBT/S_PURI_NODE_STRUCT | /GBT/CL_TRC_BO_PURI  |
| <b>Production or Process Order</b> | /GBT/S_PORD_NODE_STRUCT | /GBT/CL_TRC_BO_PORD  |
| <b>Outb. Delivery Item</b>         | /GBT/S_DLIO_NODE_STRUCT | /GBT/CL_TRC_BO_DLIO  |
| <b>Sales Order Item</b>            | /GBT/S_SALI_NODE_STRUCT | /GBT/CL_TRC_BO_SALI  |

An [example for setting appended fields](#).

**Remark:**

To extend UI specific structures and to fill them only for the WebUI purpose the BAdIs of Enhancement Spot /PLMB/ES\_SPI , especial /PLMB/EX\_SPI\_METADATA and /PLMB/EX\_SPI\_APPL\_ACCESS, can be used ([example use case](#)).

#### 4.2.2 New Business Documents

All business documents shown in the Genealogy network needs an Entry in the Customizing.

(Customizing Path: Cross-Application Components -> SAP Global Batch Traceability -> Business Add-Ins (BAdIs) for SAP GBT -> Definition of Object Types -> Define Objects for Global Batch Traceability Network)

This customizing needs a class which provides the access to the business document persistency.

The following steps are needed:

1. Create the Database table(s) for the new business document  
The Purchase Order is an example in GBT with header and item table. For the Production Order the header is only relevant.

Add the fields        OBJ\_GUID with type /GBT/OBJ\_GUID and  
                              OBJ\_TYPE with type /GBT/OBJ\_TYPE to each table.

**Remark:**

- OBJ\_TYPE must be set (see therefore the ADJUST\_OUTPUT-Method of Interface /GBT/IF\_GEN\_BO\_CB (GBT3.0) or Method /GBT/IF\_TRC\_OBJ->GET\_UI\_DATA\_BY\_GUID .
- Business document often consist of a header and items. If only the header data should be used in the genealogy the item table is not needed (as for ERP production Order). An item-entry and its corresponding header-entry have different values for OBJ\_GUID.

| DB Table name    | Purpose   |
|------------------|---|
| ZGBT_O_<...>_HDR | Business Document Header table<br>with field OBJ_GUID |
| ZGBT_O_<...>_ITM | Business Document Item table<br>with field OBJ_GUID   |

As Example see DB table /GBT/O\_PURO\_\* .

Remark: 'ZGBT' represents a non-SAP namespace and '<...>' is an abbreviation for the business document.

2. Create several structures and table types

E.g. typically the following are needed

| Structure name           | Purpose  |
|--------------------------|--|
| ZGBT_S_<...>_KEY         | Key for Business Document inclusive field LOGSYS (if needed also year of creation) |
| ZGBT_S_<...>_NODE_STRUCT | Business Document Item with all Item and also header attributes.                   |
| ZGBT_S_<...>_UI_LABEL    | ID for UI (Graphic) of the Object  |
| ZGBT_S_<...>_UI_OVERVIEW | ID and main attributes for UI (Graphic)  |
| ZGBT_S_<...>_MAINT       | Business Document Maintenance  |
| ZGBT_S_<...>_MAINT_ITM   | Business Document Maintenance for Item   |

E.g. see structures /GBT/S\_PUR\*

| Table type name        | Purpose                                |
|------------------------|--|
| ZGBT_T_<...>_MAINT     | Business Document Maintenance          |
| ZGBT_T_<...>_MAINT_ITM | Business Document Maintenance for Item |

Tip: E.g. see table types /GBT/T\_PUR\*

3. Create a class (SE24) for the new business document which is used in the genealogy. This class needs to implements the interface /GBT/IF\_TRC\_OBJ (E.g. adopt a copy of an existing class like /GBT/CL\_TRC\_BO\_PURI). /GBT/IF\_TRC\_OBJ defines methods which has untyped attributes for the business document import and export structures and tables. The new tracking class for the business document can also provide a MAINTAIN method which has as typed attributes as well as other methods which are not part of the interface /GBT/IF\_TRC\_OBJ.

The Method /GBT/IF\_TRC\_OBJ~QUERY needs only be implemented if a search with Quick search is needed. The Query can also be used to implement a DDIC Search help.

Hint: Use class /GBT/CL\_GEN\_BO to implement the new class will shorten the development time. Than only the data base tables need to be declared (constant instance attributes) to get maintain, save and read methods.

```
CV_DB_HDR = 'ZGBT_O_<...>_HDR'
CV_DB_ITM = 'ZGBT_O_<...>_ITM'
```

The main structures used for the new business and a search help needs to populate with method /gbt/if\_trc\_obj~get\_obj\_info.

```
es_obj_info-key_struct_name      = 'ZGBT_S_<...>_KEY'.
es_obj_info-label_struct_name    = 'ZGBT_S_<...>_UI_LABEL'.
es_obj_info-overview_struct_name = 'ZGBT_S_<...>_UI_OVERVIEW'.
es_obj_info-node_struct_name     = 'ZGBT_S_<...>_NODE_STRUCT'.
es_obj_info-shlp_name            = 'ZGBT_<...>_TD_SH'.
```

Hint: The Search help can be implemented by using the Query if using a search help exit by using the method /gbt/cl\_trc\_obj=>shlp\_exit\_select for selection.

Attention: The Interface /GBT/IF\_GEN\_BO\_CB (GBT 3.0) needs to be implemented:

- Method GET\_AUTH\_COND - provides the "Where"-Condition for Authority check by select statement
- Method ADJUST\_OUTPUT - mainly needs to set the OBJ\_TYPE (Within GBT 2.0 this was set in Method /GBT/IF\_TRC\_OBJ->GET\_UI\_DATA\_BY\_GUID) e.g. with the following code snippet:

```
MOVE-
CORRESPONDING /gbt/if_trc_obj~gs_obj_type TO cs_data. "s
et OBJ_TYPE in output structure
```

- Method ADJUST\_DB\_DATA – allows to adjust DB records. Changes to the records itself as well as trigger additional changes in other tables (e.g. in case of deletion cleanup subsequent data records).

**Remark:** Method Introduced with note [2673008](#). (part of GBT 3.0 SP03)

#### 4. Add a new object type to the customizing.

##### Define Generic Object Types

(Customizing Path: Cross-Application Components -> Processes and Tools for Enterprise Applications -> Settings for BO Framework and Navigation-> Define Generic Object Types)

- Define an Object type (starting with Z max. 10 characters)
- Use a description
- Enter the key structure 'ZGBT\_S\_<...>\_KEY'
- Chose an Icon

Define Objects for Global Batch Traceability Network in Customizing.

Choose a 3-character Object type (starting with Z)

(Customizing Path: Cross-Application Components -> SAP Global Batch Traceability -> Business Add-Ins (BAIs) for SAP GBT -> Definition of Object Types -> Define Objects for Global Batch Traceability Network)

- Define if the Object is used as connector (like material document) or not (like Purchase Order)
- Enter the new class which has the Interface implemented/GBT/IF\_TRC\_OBJ
- Enter the Generic Object type (defined in the step before)
- Enter the descriptions

#### 5. Activate new BAdI implementation in GBT for BAdI /GBT/EX\_IL\_LOAD\_DETAIL

This step is only needed if the Business documents details are derived from ERP.

A BAdI implementation is needed as described [below](#).

Also the new GBT Events may be needed and have to be added into ERP implementation.

If the business documents are standard ERP Objects, this may be done in the appropriate ERP BAdI or otherwise added to the Object implementation.

### 4.2.3 UI extension

The UI is based on [Floor Plan Manager \(FPM\)](#) for [WebDynpro ABAP](#). The Home Screen is built with the [WebDynpro ABAP Page Builder](#) and offers several search possibilities. Which elements are shown can be configured. For FPM see also [FPM - Slides](#).

Extensions to the UI are Configuration of the Floor Plan Manager. Navigation also to other Systems is done with the [Lauchpad](#). All Objects are displayed in the Network Graphic out of the box.

Remark: See [here](#) how to enhance the Network Graphic.

#### 4.2.3.1 Field Enhancement of UIs

To provide a new field in WebDynpro the field must exist in the related DDIC structure. The administrator first must create a Component Customizing (= Customer Standard) for a WebDynpro Component (e.g. a list or a form) a Component Configuration (= SAP Standard) to add the new appended field to the UI fields.

Precondition: The field, to be shown in the UI is available in the appropriate Node-Structure (e.g. for Batch in Structure /GBT/S\_BAT\_NODE\_STRUCTURE).



#### 4.2.3.1.1 Field enhancement for detail screens

The detailed screens are WebDynpro-screens which can be adjust by [Floor Plan Manager Configuration Editor](#).

Example to change the Batch result list:

1. Start transaction FPM\_WB.  
Precondition: The service FPM\_WB must be enabled (transaction SICF).
2. Choose the link 'Edit FPM Customizing (FLUID)' in the Configuration Tools
3. Enter Component Name = FPM\_LIST\_UIBB\_ATS, Configuration ID = /GBT/WDC\_BATCH\_LIST\_CFG.
4. Press 'New' resp. 'Continue in Change Mode' if a customizing already exists (you will receive a message in this case).
5. Press 'Add Column' in the list header on tab 'List UIBB Schema'.
6. Select your new field and press 'OK'. You can change the position of the new field with the 'Up' and 'Down' buttons.
7. By default, the field will be visible to all users. If the field should not automatically add to the UI but only available by user specific personalization you must change the value of attribute 'Visibility' to 'Not Visible'. In this case the field is not added to the UI but can be chosen by the users via personalization.

For more information on customizing see [Customizing FPM Applications](#) in the SAP Help.

#### 4.2.3.1.2 Add Column to TopDown- and/or BottomUp Table View

Depending on where the field should be displayed (Top-Down view (TD) and/or the Bottom-Up view (BU) the implementation is slightly different.

- Add field to Display Structure

First step is to enhance the structure which contains the fields needed to display. If the field should be displayed in

1. For both, Top-Down and Bottom-Up view, create an append structure for structure /GBT/S\_NW\_TREE\_DATA.
2. Only for the Top-Down view, create an append structure for structure /GBT/S\_NW\_TREE\_TD.
3. Only for the Bottom-Up view, create an append structure for structure /GBT/S\_NW\_TREE\_BU.

- Set field value in Display Structure

Create an implicit enhancement point for the appropriate method of class /GBT/CL\_NW\_READ and add the coding to set the field value. If you created the field in

4. /GBT/S\_NW\_TREE\_DATA, choose method GET\_NODE\_DATA\_TREE.
5. /GBT/S\_NW\_TREE\_TD, choose method GET\_NODE\_DATA\_TREE\_TD.
6. /GBT/S\_NW\_TREE\_BU, choose method GET\_NODE\_DATA\_TREE\_BU.

- Add field to Screen by Customizing within the Floor Plan Manager

Customize the screens with the table views and add the field to the Web Dynpro Component configuration. If the field should be displayed in

7. The Top-Down tree, add the field to /GBT/WDC\_NW\_TREE\_TD\_CFG.
  8. The Bottom-Up tree, add the field to /GBT/WDC\_NW\_TREE\_BU\_CFG.
- Create customizing of configuration /GBT/WDC\_\*\_CFG for component.**

1. Open NWBC and navigate to the screen you want to enhance.
2. Open technical help of workitem list.
3. Navigate to the 'Component Configuration' of 'Current View'
4. Create configuration (part of Additional Function)
5. Select an transport.

6. scroll down to see the UiBB Schema
7. In a List UiBB you might want to add columns  
Important: For Screen which supports already save a field, which is editable, can be set to Display Type = 'Input Field' to enable editing.  
Additional coding is need (see [here](#))!
8. Save your entries.  
Within the preview section, the columns are already visible.

#### 4.2.3.2 Home Screen

[Create Chips](#) and add them with the [WebDynpro ABAP Page Builder](#) (ToDo: Example for Search/Quick Access)

#### 4.2.3.3 UI Enhancements for Customer Objects

##### 4.2.3.3.1 Introduction

GBT uses the [Floor Plan Manager \(FPM\)](#) for its WebDynpro ABAP UIs.

- A new pages has to be created for object details screen in the [OVP](#) configuration for new business objects which are defined in table /GBT/C\_TRC\_OBJ with their OBJ\_TYPE.

Dialog box with:

- Page Type = 'Dialog Box'
- Page Id = <OBJ\_TYPE>

The new page contains the new configuration for FPM\_FORM\_UIBB\_GL2 which has to be added to the wiring model.

##### 4.2.3.3.2 Step by Step example

To integrate a new object type (in this example **ZZZ**) into the GBT UI, the following enhancements have to be performed:

1. Create a new class which implements interface /GBT/IF\_TRC\_OBJ.
2. Create new GBT object type **ZZZ** using customizing activities "Define Generic Object Types" and "Define Objects for Global Batch Traceability Network".
3. Create a display structure ZGBT\_S\_ZZZ\_NODE\_STRUCT which contains fields to be displayed on the UI.
4. Create a WebDynpro Configuration Z\_WDC\_ZZZ\_DETAILS\_CFG "Details of **ZZZ** in SAP GBT" for WebDynpro Component FPM\_FORM\_UIBB\_GL2 (Form GUIBB). Enter /GBT/CL\_FDF\_TRC\_OBJ as the feeder class with parameters
  - Application Building Block ID: GBT
  - Node Name: **ZZZ**
  - RETRIEVE by Association: not set
5. In the Component Customizing create a dialog box for OVP /GBT/WDC\_NW\_OVP\_CFG:

On the tab 'Navigation' create a page with

- Page Type: Dialog Box
- Page ID: **ZZZ**
- Title: <Header text for the Dialog Box>

In the section 'Attributes of Page' set the following Standard Attributes:

- Button Sets: Close
- Width: 900
- Height: 400

On the tab Overview Page Schema, create a section and add a UIBB of type 'FPM\_FORM\_UIBB\_GL2' with

- Component: FPM\_FORM\_UIBB\_GL2
- Window Name: FORM\_WINDOW
- Configuration Name: Z\_WDC\_ZZZ\_DETAILS\_CFG

On the tab 'Wire Schema' add a row with:

- Component: FPM\_FORM\_UIBB\_GL2
- Configuration Name: Z\_WDC\_ZZZ\_DETAILS\_CFG
- Source Component: /GBT/WDC\_OBJ\_NAV\_KEY
- Port Type: Collection
- Port Identifier: OBJECT\_DETAILS
- Connector Class: /PLMU/CL\_FRW\_W\_CONN\_DEFAULT

#### 4.2.4 Extension of UI Navigation

GBT offers the functionality to navigate to the original system of the data record displayed. This is possible on every details screen within the UI of GBT.

##### 4.2.4.1 Add an additional navigation

Details screens can be customized by the customer to show additional fields or remove some of the fields displayed in standard GBT. In addition to this it is possible to customize navigation buttons on the details screens. For example, a customer can add a button to the purchase order details screen to jump to the vendor master record in ERP. For the navigation [FPM-Launchpads](#) are used which needs to be customized.

The following describes the steps which need to be executed to add an additional navigation to another system.

1. Define Parameter for Parameter Mapping:  
Cross-Application Components -> Processes and Tools for Enterprise Applications -> Settings for BO Framework and Navigation -> Navigation, Parameter Mapping, and Services -> Define Parameters for Parameter Mapping (cross-client customizing)

If the parameter you want to pass to the external system is not yet defined, you have to create a new entry in this table.

Example:

Define Parameter "VENDOR\_NO" with description "Vendor Number" and assign data element "/GBT/VENDOR" to this parameter.

2. Define Mapping of Structure Components to Parameters:  
Cross-Application Components -> Processes and Tools for Enterprise Applications -> Settings for BO Framework and Navigation -> Navigation, Parameter Mapping, and Services -> Define Mapping of Structure Components to Parameters (cross-client customizing)

In this customizing activity you define the mapping of the structure components used in the details screens to the parameters defined in the previous step. This enables passing of data from the details screen to the Launchpad parameters.

Example:

You create a new entry for field "VENDOR" of table name "/GBT/S\_PURI\_NODE\_STRUCT", which is the table used for display of Purchase Order Item details in GBT. You map this field "VENDOR" to your newly defined parameter "VENDOR\_NO".

3. Define Navigation Targets:  
Cross-Application Components -> Processes and Tools for Enterprise Applications -> Settings for BO Framework and Navigation -> Navigation, Parameter Mapping, and Services -> Define Navigation Targets (cross-client customizing)

To create an additional navigation functionality for a details-screen you define a navigation

target which will be used to determine the action you want to execute on the screen. Each Navigation Target will result in a separate FPM Event in the customizing of the details screens.

Example:

Create a new navigation target called “DISPLAY\_VENDOR” with Description “Display Vendor Record”.

4. Create a new Launchpad application:  
Cross-Application Components -> SAP Global Batch Traceability -> Analysis of Global Batch Traceability Network -> Navigate to External Systems Using Launchpad

A Launchpad application defines the application you want to include in your existing UI. This application can be on the same system but can also be any other system. There are several types of Launchpad applications you can define. Most popular are SAP Transaction and URL. Within the Launchpad application you define the parameters used for navigation and the target application itself.

Example:

Create a new Launchpad application by copying an existing application (for example “Display Batch in SAP ERP”). Enter a new name e.g. “Display Vendor in SAP ERP” and change the transaction code to ME13.

Set the Application Alias to a new value e.g. “LPD\_VEND\_DISP”. This value will be used in the next step to link this Launchpad application to a navigation target.

In section Target App. Parameters you must define the mapping of parameters to the target transaction parameters. Click on the Parameter Mapping Button and maintain the following:

Program: SAPMM06I

Dynpro Number: 0100

OK Code: <space>

Forward only the following parameters: <checked>

Not completed by COMMIT: <checked>

In the table for parameters enter the following two parameters and their target parameters:

|                   |        |                   |            |
|-------------------|--------|-------------------|------------|
| Source Parameter: | VENDOR | Target Parameter: | EINA-LIFNR |
|-------------------|--------|-------------------|------------|

|                   |       |                   |            |
|-------------------|-------|-------------------|------------|
| Source Parameter: | MATNR | Target Parameter: | EINA-MATNR |
|-------------------|-------|-------------------|------------|

Save the Launchpad application.

5. Assign the Navigation Target:  
Cross-Application Components -> Processes and Tools for Enterprise Applications -> Settings for BO Framework and Navigation -> Navigation, Parameter Mapping, and Services -> Assign the Navigation Target

In this step you create the link of the internal GBT data and navigation structure to the external navigation using Launchpad technology. For each object type, application building block and navigation target combination you define the link to the Launchpad role, instance and application alias you want to use.

Example:

Create a new entry in this table with the following data:

Object type: GBT\_PURI

ABB ID: GBT

Nav. Target: DISPLAY\_VENDOR

Role: GBT

Instance: GBT\_SAP\_EXT\_SYS

App. Alias: LPD\_VEND\_DISP

6. Adjust the Detailed Screen as described [above](#).

Example:

Create a customizing for the purchase order details screen. In this customizing add a new button or link and assign the FPM Event “DISPLAY\_VENDOR” to the button or link.

#### 4.2.4.2 Navigation to NON-SAP ERP Systems

In case the original system for the GBT data is not an SAP ERP or SAP S/4 System the set of display functions in the source system is obviously different. The 'Display in Source System' functionality offered on the Detail-Screens can be configured depending to the logical system.

To assign a different set of external display functionality the Navigations Target must be assigned to the logical system (see transaction /GBT/LOGSYS\_CONFIG).

The Navigations Target has to be defined with prefix 'EXTERNAL\_DISPLAY' (see customizing 'Define Navigation Target'. For more details see [above](#)).

#### 4.2.5 Extent load of Business Documents Details

To fill the extended data (additional fields or even new Objects) in GBT the integration needs to be adapted.

##### 4.2.5.1 Integration of additional attributes from ERP

The following steps are needed:

1. Create new RFC Structures in ERP and GBT
2. Create selection class in ERP (e.g. by copy and adaption of existing class)
3. Create BAdI implementation in GBT (e.g. by copy and adaption of existing implementation)
4. Activate new BAdI implementation in GBT

##### 4.2.5.1.1 Extension in ERP

- (1) Create new RFC Structure

Example: copy /GBTINT/S\_PURI\_DATA\_RFC to ZGBTINT\_S\_PURI\_DATA\_RFC and exchange the table type of component OBJ\_HDR and/or OBJ\_ITM to the table types which has the extended structures.

- (2) Create a new selection class with interface /GBTINT/IF\_OBJ\_ACCESS

Example: copy /GBTINT/CL\_PURI\_ACCESS to ZGBTINT\_CL\_PURI\_ACCESS

- a. fill the new created RFC structure in method /GBTINT/IF\_OBJ\_ACCESS~GET\_DETAILS

Example: exchange type /GBTINT/S\_PURI\_DATA\_RFC and /GBTINT/S\_PURI\_HDR\_RFC and/or /GBTINT/S\_PURI\_ITM\_RFC with the extended ZGBTINT -Type and adjust the selection if needed.

Usually only change the type of the variable which has the different RFC-Structure is needed.

- b. populate the used structures with method /GBTINT/IF\_OBJ\_ACCESS~ GET\_INFO

Example:

```
es_info-key_struct      = '/GBTINT/S_PURI_KEY_RFC'.  
es_info-data_list_struct = 'ZGBTINT_S_PURI_DATA_RFC'.
```

##### 4.2.5.1.2 Extension in GBT

- (1) Create new RFC Structure

Example: copy /GBT/S\_PURI\_DATA\_RFC to ZGBT\_S\_PURI\_DATA\_RFC and exchange the table type of component OBJ\_HDR and/or OBJ\_ITM to the table types which has the extended structures.

- (2) Implement BAdI /GBT/EX\_IL\_LOAD\_DETAIL

(Customizing Path: Cross-Application Components -> SAP Global Batch Traceability -> Business Add-Ins (BAdIs) for SAP GBT -> Integration BAdI: Loading of Object Details from External System)

- a. Create a new BAdI implementation for BAdI /GBT/EX\_IL\_LOAD\_DETAIL

Example: Copy /GBT/CL\_EX\_IL\_LOAD\_DETAIL\_PUI to ZGBT\_CL\_EX\_IL\_LOAD\_DETAIL\_PUI

fill the new created RFC structure in GBT in the method /GBT/IF\_EX\_IL\_LOAD\_DETAIL~LOAD\_DETAIL by calling the new created ERP selection class with function module '/GBTINT/RFC\_LOAD\_DETAIL' and use the [ABAP command 'IMPORT'](#) to fill the new created GBT RFC structure.

Example:

```

DATA lv_data TYPE /gbt/xstring.

CALL FUNCTION '/GBTINT/RFC_LOAD_DETAIL'
  DESTINATION iv_rfc_dest
  EXPORTING
    iv_obj_type = iv_erp_obj_type
    iv_keys     = lv_keys
    iv_class_name = 'ZGBTINT_CL_PURI_ACCESS'
  IMPORTING
    ev_data     = lv_data.

* uncompress data
DATA ls_obj_data_rfc TYPE zgbt_s_puri_data_rfc.

IMPORT object_data = ls_obj_data_rfc " <= GBTRINT-SP10
      obj_hdr      = ls_obj_data_rfc-obj_hdr ">= SP11
      obj_itm      = ls_obj_data_rfc-obj_itm ">= SP11
      FROM DATA BUFFER lv_data
      ACCEPTING PADDING
      ACCEPTING TRUNCATION.
" <-RFC

```

Activate BAdI in GBT

- i. Check the filter values of the new BAdI Implementation  
Example: PUI = OBJ\_TYPE
- ii. deactivate the standard GBT BAdI implementation
- iii. activate the new BAdI implementation

*Remark:* instead of using the ABAP-command IMPORT FROM DATA BUFFER it is also possible to use method /gbt/cl\_exim\_util=>import\_data. This method has the advantage also to accept different field length as well as extended structures.

#### 4.2.5.2 Integration of new business documents

This is mainly expected for non-SAP ERP systems. But also, this may be needed for customer specific business documents in ERP.

The kind of integration needs to be provided by the implementation project. It depends if a PUSH scenario (like used by a File Import) or a PULL scenario (like used for transferring GBT-Events from ERP to GBT) can be chosen.

#### 4.2.6 Confidential attributes

Some detailed information, stored within a business document (e.g. the quantity information), should not be visible to every user.

Hint: To define a user-specific authorization use an authorization-object (see SE11).

All attributes offered by a business document are member of a '[Node-Structure](#)' like /GBT/S\_BAT\_NODE\_STRUCT, /GBT/S\_MDIIT\_NODE\_STRUCT, etc.

To suppress the confidential attributes an enhancement is needed within the implementation of those business documents where the 'Node-Structure' contains these attributes.

The enhancement to suppress the selection of confidential attributes can be done in the implementation of method GET\_OBJ\_INFO (defined with the interface /GBT/IF\_TRC\_OBJ).

Within GET\_OBJ\_INFO the used Node-Structure can be overwritten by a reduced version containing only the non-confidential attributes.

If for example the quantities should be suppressed create a structure like

'ZXY\_S\_MDIT\_NODE\_STRUCT' which is similar to /GBT/S\_MDIT\_NODE\_STRUCT without the quantity fields. At end of Method GET\_INFO the authority-check for a user should be performed and if no authority given the setting of the Node-Structure should be overwrite:

```
es_obj_info-node_struct_name = 'ZXY_S_MDIT_NODE_STRUCT'
```

Remark: For the given example, it is also needed to suppress also the quantity attribute of the event, by initializing the quantities in the result of Method /GBT/CL\_NW\_DB=>TREE\_BY\_ROOT\_OBJECT.

## 4.3 Extension of missing events

### 4.3.1 Field extension

You can add customer specific fields to table /GBT/N\_MS\_EV\_OBJ and add these fields as search criteria in the missing events UI.

Add customer specific fields to table /GBT/N\_MS\_EV\_OBJ and add these fields as search criteria in the missing events UI doing the following steps (see SAP Note 1889447):

1. Create the customer include CI\_OBJ\_MS\_EVNT\_ATTR if necessary.

Define your fields in the customer include.

2. Copy standard search help /GBT/OBJ\_MISS\_EVENT\_SH to create your customer search help with the new fields defined in the customer include.

NOTE: Make sure to use the same selection method /GBT/N\_MS\_EV\_OBJ in your customer search help.

3. Add your customer search help to the standard search help by EITHER

a) Creating an implementation for BAdI definition /PLMB/EX\_SPI\_METADATA to add your customer search help as query.

See the correction instruction for an example coding.

OR

b) Appending your customer specific search help to the standard collective search help /GBT/OBJ\_MISS\_EVENT\_CSH.

4. Create a customizing for the missing events search GUIBB and enter your customer search help in feeder class parameter (Button 'Feeder Class Parameters' in section General Settings).

5. In the customizing, add the new fields from customer include CI\_OBJ\_MS\_EVNT\_ATTR as selection parameters to the missing events search GUIBB.

6. If you want to display the new fields also in the result list for missing events, create a customizing for the result list GUIB and add the new fields from customer include CI\_OBJ\_MS\_EVNT\_ATTR to the result list GUIBB.

### 4.3.2 Configuration of Mandatory Fields

Manual added Events via "Missing Event" functionality it may require mandatory information like e.g. "Reason Code". To configure a field as mandatory you must change the WebDynpro Configuration in

Administration Mode. You must navigate to the screen where the field is shown. There, with a right click on the field, you can change the “Settings for Current Configuration”. Switch the state of the chosen field to “Required Entry” and save the changes.

## 4.4 Extension of Worklist

In most cases, it is expected that the Worklist Item needs to be extended. But also Workgroup and Worklist header can be enhanced.

### 4.4.1 Workgroup

Append own fields to workgroups by creating the customer include **CI\_WL\_GROUP\_ATTR**.

Add the new fields to the UI by creating customizing for:

- Workgroup List: List UIBB configuration /GBT/WDC\_WL\_GROUP\_LIST\_CFG.
- Workgroup Details: Form UIBB configuration /GBT/WDC\_WL\_GROUP\_CFG.

### 4.4.2 Worklist Header

Append own fields to worklists by creating the customer include **CI\_WRKLSH\_HDR\_ATTR**.

Add the new fields to the UI by creating customizing for:

- Worklist List: List UIBB configuration /GBT/WDC\_WORKLIST\_LIST\_CFG.
- Worklist Details: Form UIBB configuration /GBT/WDC\_WORKLIST\_CFG
- Create Worklist: Form UIBB configuration /GBT/WDC\_WORKLIST\_CREATE\_CFG

### 4.4.3 Worklist Items

Append own fields to worklist items by creating the customer include **CI\_WRKLSH\_ITM\_ATTR**.

Add the new fields to the UI by creating customizing for:

- Worklist Item List: List UIBB configuration /GBT/WDC\_WORKLIST\_ITEM\_LIST\_CFG.

#### 4.4.3.1 Example: add an editable field to Worklist Items

Set a new field to editable is possible by creating an enhancement in method /PLMB/IF\_SPI\_PROPERTIES\_ACCESS~GET\_PROPERTIES in class /GBT/CL\_NW\_SP.

The following example coding shows how to set the field ‘NOTE’ in the worklist item to editable for already existing entries (CHANGE).

```
DATA:
  lt_worklist_item_key TYPE /gbt/t_worklist_item_key.

FIELD-SYMBOLS:
  <ls_worklist_item_key> LIKE LINE OF lt_worklist_item_key.

CASE iv_reference_type.
*-----*
  WHEN /plmb/if_spi_c=>gs_c_prpty_ref_type-data_record.
    CASE iv_node_name.
      WHEN /gibt/cl_nw_mp=>gc_node_name-worklist_item.
*
        No changes for aggregated nodes!
        lt_worklist_item_key = ig_reference_data.
        LOOP AT lt_worklist_item_key ASSIGNING <ls_worklist_item_key>.
          CLEAR ls_property_index.
          CLEAR ls_indexed_prp_multi.
          ls_property_index-property_index = sy-tabix.
          INSERT ls_property_index
            INTO TABLE ls_indexed_prp_multi-property_index.
```



```

IF /gbt/cl_nw_eng=>node_is_cumulation_node(
    <ls_worklist_item_key>-obj_guid ) = abap_false.
    ls_property-option = /plmb/if_spi_c=>gs_c_property-changeable.
ELSE.
    ls_property-option = /plmb/if_spi_c=>gs_c_property-readonly.
ENDIF.
ls_property-node_field = 'NOTE'.
INSERT ls_property INTO TABLE ls_indexed_prp_multi-properties.
APPEND ls_indexed_prp_multi TO et_properties_multi_idx.
ENDLOOP.
ENDCASE.
ENDCASE.

```

Automatically trigger a SAVE-event after changing an editable field by creating an enhancement in method /PLMU/IF\_FRW\_G\_ACTIONS~PROCESS\_ACTION\_EVENT in class /GBT/CL\_FDL\_WORKLIST\_ITEM.

The following example coding shows how to automatically trigger a SAVE-event after changing the content of field 'NOTE' in the worklist item.

```

CASE io_event->mv_event_id.
    WHEN if_fpm_guihb_list=>gc_guihb_list_on_cell_action.
        io_event->mo_event_data->get_value(
            EXPORTING
                iv_key    = if_fpm_guihb_constants=>gc_guihb_attributes-field_name
            IMPORTING
                ev_value = lv_field_name ).
    CASE lv_field_name.
        WHEN 'NOTE'.
            *
            Direct SAVE
            lo_event = cl_fpm_event=>create_by_id(
                iv_event_id = if_fpm_constants=>gc_event-save ).
            cl_fpm_factory=>get_instance( )->raise_event( lo_event ).

            *
            Switch back to edit mode
            lo_event = cl_fpm_event=>create_by_id(
                iv_event_id = if_fpm_constants=>gc_event-edit ).
            cl_fpm_factory=>get_instance( )->raise_event( lo_event ).
    ENDCASE.
ENDCASE.

```

#### 4.4.4 Worklist Action

Actions on Worklist Items can be triggered. This is described in [Custom actions in GBT Worklist](#).

## 5 Master data

Master data in GBT are optional and not mandatory for GBT. Nevertheless, it is useful to have them to get search possibilities, text, alternative IDs and some common attributes. Master data are integrated from ERP with ALE / IDOC.

If additional attributes needed e.g. for reporting in GBT the IDOC-Inbound logic needs to be extended. For this kind of extension, the appropriate GBT-Inbound Function module (/GBT/IL\_IDOC\_IN\_\*) should be replaced by a new one (a modified Copy of the GBT standard IDOC function module) which has the needed attribute value mapping into the target Object.

Remark: UI for Master data is SAP-GUI.

### 5.1 Material

The ERP Material is stored within the [Product](#) (based on the implementation used in CRM and SRM) (AP-MD-PRO) with type material (01). The integration is specific to GBT and includes the mapping between ERP Material and GBT Product Key.

Attributes taken over by the integration are material description, unit of measures (UoM), Global Trade Item Number (GTIN).

### 5.1.1 Product Category to group Materials

Material attributes used for grouping and needed in GBT for search of materials. This can be e.g. the material type (MARA-MTART) or any other MARA attribute as well as Z-fields if they are part of the Material IDOC Segment for MARA. It is also possible to use plant specific fields like production planner (MARC-DISPO).

#### 5.1.1.1 Configure ERP Material attribute as Product Category

To use one of the Material attributes as Product Category in GBT, use report /GBT/R\_PROD\_CAT\_SETUP (for details check the documentation). The attribute will be automatically added to the Material Search Help.

If this Product Category should also be directly used in the Batch Search Screen the Product Category needs to be appended to structure /GBT/S\_BAT\_NODE\_STRUCT. The data element is defined in class /GBT/CL\_PROD\_GROUP\_ERP\_<attribute name> => GV\_ROLLNAME.

**Attention:** Don't add the requested attribute to the CI-Includes. This would also extend the Database.

Existing Classes for Product Category Integration:

| Class Name                   | ERP Table | Description   |
|------------------------------|-----------|---|
| /GBT/CL_PROD_GROUP_ERP_MATKL | MARA      | Retrieve Material Type from ERP as Prod. Cat. Hierarchy     |
| /GBT/CL_PROD_GROUP_ERP_MTART | MARA      | Retrieve Material Type from ERP as Prod. Cat. Hierarchy     |
| /GBT/CL_PROD_GROUP_ERP_PRDHA | MARA      | Retrieve Product Hierarchy from ERP as Prod. Cat. Hierarchy |
| /GBT/CL_PROD_GROUP_ERP_SPART | MARA      | Retrieve Division from ERP as Prod. Cat. Hierarchy          |
| /GBT/CL_PROD_GROUP_ERP_MAGRV | MARA      | Retrieve Packaging MatlGrp from ERP as Prod. Cat. Hier.     |
| /GBT/CL_PROD_GROUP_ERP_DISPO | MARC      | Retrieve MRP Planner from ERP as Prod. Cat. Hierarchy       |
| /GBT/CL_PROD_GROUP_ERP_FEVOR | MARC      | Retrieve Prodn. Supervisor from ERP as Prod. Cat. Hierarchy |

### Create a new Class for Product Category Integration

If another attribute from MARA, which is used to group Material, should be used as Product Category the interface /GBT/IF\_PROD\_GROUP needs to be implemented for this.

#### 1. Global Definitions

| Global value | Description  |
|--------------|--|
| GV_FIELDNAME | Fieldname used in ERP MARA or MARC                                       |
| GV_ROLLNAME  | Date element used in GBT for this Field                                  |
| GV_TABKIND   | 'A' for MARA or 'C' for MARC<br>Constant values CV_MARA, CV_MARC defined |

|              |   |
|--------------|---|
| GV_EX_SEGNAM | Used for customer defined MARA field extensions which are transferred in an Customer defined IDOC-Segment (not Supported for MARC-fields) |
|--------------|---|

## 2. Methods which needs to be implemented

| Method Name        | Description   |
|--------------------|---|
| READ_AS_CATEGORY   | Read Product Group values from external Source as Category.<br><br>This method does the extraction of the possible values for the specified attribute |
| MAP_TO_CATEGORY_ID | Map Product Group value to category ID<br><br>This method defines the value representation in GBT.  |

Tip: Check existing Implementations of this interface (e.g. /GBT/CL\_PROD\_GROUP\_ERP\_MTART)

### 5.1.2 Extension of Product

The Product can be extended by creating a new [Set type](#) (Transaction COMM\_ATTRSET). New set types can be filled by the ALE/IDOC Integration (BAI-Method /GBT/EX\_IL\_MATMAS

MAP\_TO\_PRODUCT (Note 1828085 / SP03). For Set type see documentation:

[http://help.sap.com/saphelp\\_crm50/helpdata/en/91/d8fc377cb5be5ae10000009b38f842/frameset.htm](http://help.sap.com/saphelp_crm50/helpdata/en/91/d8fc377cb5be5ae10000009b38f842/frameset.htm)

[http://help.sap.com/saphelp\\_crm70/helpdata/en/46/5786ec01a208e7e10000000a114a6b/content.htm?frameset=/en/46/57672501a208e7e10000000a114a6b/frameset.htm](http://help.sap.com/saphelp_crm70/helpdata/en/46/5786ec01a208e7e10000000a114a6b/content.htm?frameset=/en/46/57672501a208e7e10000000a114a6b/frameset.htm)

For an extension of ALE / IDOC for inbound processing in GBT see [here](#).

#### 5.1.2.1 How to create a set type

1. Call Transaction COMM\_ATTRSET (Development authorization is needed)
2. Create all needed Attributes (using COMM\_ATTRSET)
3. Create the Set type (also using COMM\_ATTRSET) for Product Extension

Definition:

Set Product Type to 'Material'

Org. Dependency is independent

Don't check for "multiple use"

Assign the new attributes you need to extend the product with.

Please check:

1. A Table with the name of the Set Type you choose should exist.  
Remark: the fieldname of the attributes in the table are generated.
2. Function modules: ZOM\_<table name> \* should exist

#### 4. Transport Set Type

Use Transaction COMM\_ATTRSET Start Menu: Set Types/Attributes -> Transport -> Set type

Please check:

1. Structure COMT\_PROD\_MAT\_MAINTAIN\_API must have a new Append structure with an internal table for the created 'SetType'.

#### 5. Assign Set Type to Main Category (e.g. GBT\_MATERIAL)

- a. Call Transaction COMM\_HIERARCHY (or via SPRO => Cross Application Components -> SAP Product -> Product without Customizing Transfer ...=> Maintain Categories/Hierarchies)

1. Chose Tab 'Find' Select Category (e.g. GBT\_MATERIAL)
2. Chose Tab 'Set Types' add your created Set type to these Category.

### 5.1.3 Extension of other Objects with Material attributes

In some scenarios, a material attribute is relevant for an object e.g. like Batch or Production Order. If the Method /GBT/IF\_TRC\_OBJ~GET\_UI\_DATA\_BY\_GUID cannot be used (e.g. too expensive by doing also more than needed) the method /GBT/CL\_MAT\_BO\_UTIL=> ENRICH\_DATA is recommended.

Remark: The enrich-method takes the material number and logical system from the given structure and enrich the attributes of these structure with corresponding values. For this the attribute 'product\_guid' is needed as additional attribute in any case. To suppress an attribute (like e.g. Material Description) set the corresponding Parameter with the fieldname (e.g. IV\_DESCR\_FLD) to space.

## 5.2 Business Partner

The ERP Business Object Plant, Customer and Vendor are stored as Business Partner (AP-MD-BP) in GBT. The integration is specific to GBT and includes the mapping between ERP and GBT Business Partner Key.

The standard address with its attributes and Global Location Number are transferred by the integration.

### 5.2.1 Extension of Business Partner

The Business Partner can be extended by using the [Easy Enhancement Workbench \(EEW\)](#). Additional attributes which should be filled by the ALE/IDOC Integration must be supported by a new IDOC Function Module.

For an extension of ALE / IDOC for inbound processing in GBT see [here](#).

### 5.2.1 Extension of other Objects with Plant attributes

In some scenarios, a Plant attribute e.g. (name) are relevant for an object e.g. like Batch. If the Method /GBT/IF\_TRC\_OBJ~GET\_UI\_DATA\_BY\_GUID cannot be used (e.g. too expensive by doing also more than needed) the method /GBT/CL\_PRT\_BO\_UTIL=> ENRICH\_PLANT\_DATA is recommended.

## 5.3 Descriptions

Codes to identify a Category, a Type or an Object often have an additional textual description. Codes and their descriptions may be specific to the sending system (e.g. by customizing).

**Attention:** Descriptions for attribute values which are used to group materials are handled by [Product Category](#) within GBT.

To load descriptions from ERP into GBT the use of report /GBT/R\_DESC\_TABLE\_SETUP (for details check the documentation) is recommended. New kinds of description for codes can be added by implementing the interface /GBT/IF\_DESC\_LOAD.

Existing Classes which implement the interface:

| Class Name                  | ERP Table | Description   |
|-----------------------------|-----------|---|
| /GBT/CL_DESC_LOAD_ERP_T001L | T001L     | Retrieve Name for Storage Location (not language dependent) |
| /GBT/CL_DESC_LOAD_ERP_T156T | T156T     | Retrieve Material Movement Description (Standard)           |

|                                |       |   |
|--------------------------------|-------|---|
| /GBT/CL_DESC_LOAD_ERP_T156T900 | T156T | Retrieve Material Movement Description (Custom specific)              |
| /GBT/CL_DESC_LOAD_ERP_T163Y    | T163Y | Retrieve Description for Item Categories used in Purchasing Documents |

### 5.3.1 Add a new Class for Description Integration

If descriptions of a specific table should be integrated to GBT the interface /GBT/IF\_DESC\_LOAD needs to be implemented.

#### 1. Global Definitions

| Global value    | Description  |
|-----------------|--|
| GV_TABNAME      | Table used as Identifier for set of descriptions   |
| GV_DESCRIPTION  | Text which identifies for which type of values the descriptions are used (value can be set in the class constructor depending on login language) |
| GV_LOCAL_SCOPE  | Expected scope<br>global => used in all Systems<br>local => used for one System  |
| GV_SWITCH_SCOPE | Allow to switch the scope  |

#### 2. Methods which needs to be implemented

| Method Name | Description  |
|-------------|--|
| READ        | Read Description from external Source and store to buffer.<br><br>This method does the extraction of the possible values for the specified attribute |
| SAVE        | This method stores the buffered values to data base.   |
| CLEAR       | Clear buffer   |

**Addition:** To see the descriptions in the UI extend /GBT/S\_\*\_NODE\_STRUCT (but not the CI-Includes!) and extend the implementation of /GBT/IF\_TRC\_OBJ->GET\_UI\_DATA\_BY\_GUID.

### 5.3.2 Store Description to database table /GBT/D\_CODE\_GEN

The descriptions can be stored in the standard GBT database table /GBT/D\_CODE\_GEN which offers a central place for various sets of descriptions. These sets are separated by the name of the different data elements which are used for the different code-sets.

This table can be used if the codes, for which a description is needed, can be stored with 4 Characters and the description is fully specified by Code and Language.

Attention: This table cannot be used if the key needs more than 4 Characters or is not described by a single code. This table should also not be used if a big set of descriptions is expected.

Class /GBT/CL\_CODE\_GEN\_DESCR is used to maintain and read the description form the central table /GBT/D\_CODE\_GEN.

As example how to deal with this class check implementation of /GBT/CL\_DESC\_LOAD\_ERP\_T163Y and also method ENRICH of class /GBT/CL\_TRC\_BO\_PUR1.

### **5.3.2.1 Search help for Code values based on table /GBT/D\_CODE\_GEN**

A generic Function module /GBT/CODE\_GEN\_SHLP\_EXIT for the search help exit offers the search within the table /GBT/D\_CODE\_GEN.

DTEL is a key of table /GBT/D\_CODE\_GEN which groups a set of code.

The search help which uses the generic FM needs to set the attribute DTEL with the name of the corresponding data element as default value.

As example see data element /GBT/PURO\_PSTYP and search help /GBT/PURO\_PSTYP\_SH.

How to extend the UI with additional description fields see chapter [UI extension](#).

## 6 Extension of ALE / IDOC

If an extension of the ERP IDOC type is needed please refer to [SAP- Documentation of Extending an IDOC type](#).

**Attention:** Customer specific IDOC-Segments-Types need a name like 'Z1\*', e.g. a name has to start with 'Z1' like in 'Z1SEGMENT\_TYPE'.

### 6.1 Configure use of an IDOC Inbound Function Module in GBT

The following steps are needed to use a new created IDOC Function Module in GBT:

1. Transaction BD51 - Maintain Attributes of the Inbound Function Modules
2. Transaction WE57 - Assign Inbound Function Module to Message Types and IDOC Types
3. Transaction WE42 - Define Process Codes

To configure the ALE/IDOC on GBT check also [Basic Settings for SAP GBT 2.0](#).

## 7 Altering the Network Query

### 7.1 BAdI /GBT/EX\_NW\_DB\_QUERY

This BAdI allows dynamic suppressing of network events during network query. The example BAdI implementation /GBT/EX\_NW\_DB\_BREAK\_REUSE breaks repeated use of the same material as input for production orders. This can help avoiding huge networks e.g. when reusing production output.

**Caution:**

Implementing this BAdI affects every kind of network analysis within GBT. This includes reports as well as table and graphical view. Performance of network analysis may suffer.

## 8 Extent Network Views (Filter and Aggregation)

### 8.1 Introduction

Beside the predefined Network Views, you can define own views using the predefined simplifications. Furthermore, own simplifications can be defined.

- For more information about the delivered views, see Customizing for SAP Global Batch Traceability under *Analysis of Global Batch Traceability Network -> Analysis of Global Batch Traceability Network -> Define Views for Filtering and Aggregation*.
- For more information about the delivered simplifications, see the transaction for view cluster maintenance (transaction SM34) for view cluster /GBT/VC\_SIMP.

**Note**

A view summarizes several simplifications. A simplification reduces the complexity of a global batch traceability network by either filtering specific nodes out of the network, or by aggregating many nodes into a few aggregation nodes. A simplification defines a specific selection of network nodes to which it is applied. If the simplification is an aggregation, it also contains the aggregation key fields. This enables you to combine multiple simplifications.

On the user interface, you select such a combination simply by selecting a view.

On the user interface, the filtered network nodes or events are deleted and not displayed in a network. In comparison, aggregated network nodes or events are replaced, and displayed as aggregated network nodes or events.

## Examples

- You can define own simplifications like the following:
  - To filter all nodes but purchase orders and batches
  - To filter all nodes but production orders and batches
  - To cut segments at a certain purchase order
  - To cut segments bottom up at a certain material
- You can define own views like the following:
  - Batch Only on Plant Material Level
  - Outbound Delivery by Ship-To Party

## 8.2 Define Simplifications for Filtering

1. Start the transaction for the view cluster maintenance (transaction SM34).
2. Enter /GBT/VC\_SIMP as view cluster name and *Maintain*.
3. For the simplification maintain the following:
  - a. Define a simplification ID.
  - b. Choose simplification type *Filter*.
  - c. Choose the simplification object that is on which object the simplification makes an impact: on a network node or on a relationship.
  - d. Enter a description of the simplification ID
4. In the *Dialog Structure* choose *Selection of Nodes or Events*.
5. Maintain the following:
  - a. Define a selection ID.
  - b. Choose a selection criterion.  
Enter the field name of an object attribute as it is defined in the corresponding dictionary table /GBT/S\_<**table identification**>\_NODE\_STRUCT.

### Example

- If you want to create a selection for batches using a certain plant, enter **PLANT** as the selection criterion.  
You find this field name in table /GBT/S\_BAT\_NODE\_STRUCT.
  - If you want to create a selection for batches using a certain storage location, enter **STGE\_LOC** as the selection criterion.  
You find this field name in table /GBT/S\_BAT\_NODE\_STRUCT.
  - If you want to define a selection for the object type, enter **OBJ\_TYPE** as the selection criterion.
- c. Define the selection option, for example, *Equals*.
  - d. Include or exclude the selected objects from the network.

### Note

For filtering, the combination of selection criterion *Equals* and selection option *Include in Selection* results in a **deletion** of the respective network nodes. They are no longer displayed in the network.



- e. Define the data type, for example, *Character*, of the selected objects.
- f. Define the value of the selection criterion, for example, *BAT* for objects of type batch or *DII* for objects of type inbound delivery.
- g. Save your entries.

**Note**

For filtering, you have nothing to define in the *Dialog Structure* under *Definition of Aggregation*.

### 8.3 Define Simplifications for Aggregating

1. See step 1, 2, 3, 4, and 5 of chapter [Define own Simplifications for Filtering](#). In step 3, choose simplification type *Aggregation* instead of simplification type *Filter*.

**Note to step 5**

For aggregating, the combination of selection criterion *Equals* and selection option *Include in Selection* results in a **selection** of the respective network nodes. They are the input for the aggregation in step 3.

2. In the *Dialog Structure* choose *Definition of Aggregation*.
3. Maintain column *Property ID*

Enter one or more fields which are used to aggregate network nodes in one network node.

**Example**

If you want to define an aggregation of batches on plant level, you first select batches as nodes and second enter *BATNR*, *LOGSYS*, *MATNR*, and *PLANT* as property IDs. All nodes of object type *BAT* (batch) which have the same batch number, logical system, material number, and plant are aggregated and displayed as one node in the network.

**Recommendation**

If you want to support the usage of an aggregated network node as a root node, we recommend to **index the respective database tables** with prefix */GBT/O\**, for example, */GBT/O\_BAT\_ITM*. Otherwise, **performance issues** could occur.

### 8.4 Define Views for Filtering and Aggregation

1. In Customizing for SAP Global Batch Traceability (transaction *SPRO*) choose *Analysis of Global Batch Traceability Network* -> *Analysis of Global Batch Traceability Network* -> *Define Views for Filtering and Aggregation*.
2. Define a view ID and a text. This text is used on the user interface to select a certain view, and is added to the screen title to inform the user about the selected view.
3. Select one or more of the predefined simplification IDs that apply to your prerequisites. Depending on the simplification type, the network nodes or events are filtered or replaced with aggregated nodes or events on the user interface.
4. Save your entries.

**Example to filter both all network nodes except batches and all relationships with a relationship quantity of zero (combination of views *BATCH\_ONLY* and *REL\_GT\_ZERO\_ONLY*)**

If you select this view on the user interface, the system displays only batches and only relationships with a quantity that is greater than zero. All other nodes and relationships are filtered.

1. In this Customizing activity, under *Filter and Aggregation View*, enter **Z\_BATCHES\_AND\_REL\_GT\_ZERO\_ONLY** as the view ID and **Only Batches / Relations. > Zero** as the view text.
2. Under *Simplification*, select *FILTER\_ALL\_NODES\_BUT\_BATCHES* and *FILTER\_REL\_QUANTITY\_EQ\_ZERO* as the simplification IDs and save your entry.
3. On the user interface, you can choose the new view *Z\_BATCHES\_AND\_REL\_GT\_ZERO\_ONLY*.

## 8.5 Define a Default Network View

The Set/Get parameter ID /GBT/NETWORK\_VIEW needs to be predefined for a user if a network view should be set as the new default view. Assign the view-ID (as defined in table /GBT/C\_VIEW) as value to the parameter /GBT/NETWORK\_VIEW with transaction SU3 (own data), SU01 or SU10 (mass maintenance).

## 9 Enable custom Use Cases with Reports and Worklists

Additional functionality can be added to GBT integrated into the Batch Search UI and with the Worklist UI.

Special Reports, which can accept a list of GBT-Objects as input (see details below) can be developed. As example please check usage list, distribution list or others provided in GBT.

A complex selection of Objects, Batches or others, can also be programmed as dynamical Worklist. E.g. Batches which will soon reach their best-before-date and still on stock.

For the Worklist it is also possible to develop and add Actions like e.g. create a Quality-Notification or to block a Batch in ERP.

See also [Extension of UI Navigation](#) and [Enhancement of Network Graphic](#).

### 9.1 Custom reports in GBT UIs

Reports can be directly included in the GBT user interface for the Batch Search and to the Worklist.

These reports need the specific Parameter p\_handle, which allows the transfer from the Selected Data from the WebDynpro UI.

Also, existing reports developed by SAP can be replaced or removed from the user interface. For the integration of reports in the GBT user interface the SAP NetWeaver functionality called Launchpad is used.

#### 1. Create report

A new report must be created in customer namespace. To create a new report, open the ABAP Editor (SE38) from the SAP Easy Access Menu Tools → ABAP Workbench → Development → ABAP Editor.

Enter the name of the new report in field Program and press the button Create.

In the popup enter the title of your report and select “Executable program” as type for your report.

The report must provide input parameter p\_handle of type memory\_id. This parameter receives a handle which points to a database table. The database table is filled with object ids from the UI when the user selects objects and requests to execute the report.

Example code:

```
PARAMETERS: p_handle TYPE memory_id MEMORY ID handle.
To read the object ids from the database, implement the following data definitions and method calls:
DATA:
  lv_handle          TYPE          sysuuid_x16,
  lo_buffer_handle   TYPE REF TO /plmb/cl_frw_buffer,
  lt_parameter_set   TYPE          /plmb/t_frw_parameter_set.
* Get handle to read IDs from shared memory using framework functionality
/plmb/cl_frw_buffer=>get_buffer_handle(
  EXPORTING
    iv_lifetime = 3600 " Lifetime in seconds
  IMPORTING
    eo_handle = lo_buffer_handle " Buffer class
).

lv_handle = p_handle.

* Read IDs from buffer
lo_buffer_handle->get_data(
  EXPORTING
    iv_handle          = lv_handle          " Object Type
    iv_clear_buffer    = abap_true         " Supplement for True Boolean Type: 'X'
    ' == True ' ' == False
  IMPORTING
    et_data            = lt_parameter_set
).

```

Save and activate your report.

## 2. Create a transaction

For the new report a transaction of type “report transaction” has to be created.

On the SAP Easy Access Menu choose Tools → ABAP Workbench → Development → Other Tools → Transactions.

Enter the name of the new transaction in field “Transaction code” and press button “Create”.

In the popup enter a short text for your transaction and select start object “Program and selection screen (report transaction)”. Press enter.

In the next screen enter your report name in field “Program”. Enter the screen number which includes the input parameter fields in field “Screen number”. In input area “Classification” set the flag for “SAPGUI for HTML”.

Save your transaction and test if the right report is called.

## 3. Configure the user interface to call the new report

All reports which can be called directly from the GBT user interface are registered within a launchpad. The launchpad is of role “GBT” and the instance is called “GBT\_REPORTS”.

To include a custom developed report into the GBT user interface the SAP delivered GBT launchpad has to be changed. In the customizing for SAP Global Batch Traceability select User Interface Settings → Launchpad for integration of reports. The screen will show all linked applications in the left frame.

Add your report by clicking the button “New Application” and enter the following values:

| Field name                        | Value                                 |
|-----------------------------------|---------------------------------------|
| <b>Link Text</b>                  | <Display name of your report>         |
| <b>Application Type</b>           | Transaction                           |
| <b>Transaction Code</b>           | <Transaction code you created before> |
| <b>System Alias</b>               | SAP_LocalSystem                       |
| <b>Force local system if NWBC</b> | <checked>                             |

Addition parameters:

| Field name                    | Value  |
|-------------------------------|--|
| <b>Application Alias</b>      | LPD_REPORT_<Add a abbreviation for the report>   |
| <b>Target App. Parameters</b> | Click on the button for “Parameter Mapping”. In the area for batch input enter the name of your report and the dynpro number of the selection screen (default 1000). Check the option for “Forward only the following parameters”.<br>In the area for additional options for call transaction activate checkboxes for “Not completed by COMMIT” and “No batch input for CALL trans.”.<br>Select processing mode “Display errors” and update mode “Asynchronous”.<br>Add one line to the table at the bottom of the popup and enter source parameter “HANDLE_ID” and target parameter “P_HANDLE”. |
| <b>GUI type</b>               | SAP GUI for HTML   |
| <b>Entries once started</b>   | Skip initial screen if possible  |
| <b>Navigation mode</b>        | Headerless Portal Window   |
| <b>History mode</b>           | Navigation entry can occur once in history   |
| <b>Parameter Forwarding</b>   | Post parameters  |

Save the launchpad.

Now you should be able to access your report in the SAP GBT user interface.

Note: the first time you change a SAP delivered launchpad a new version of the launchpad will be generated and this new version will be used from there on. To access the launchpad originally delivered by SAP choose Extras → Show SAP Version.

For more details about changing an existing launchpad, read the [documentation for launchpad](#).

## 9.2 Dynamical determined Worklist Items

Worklist items can either be read from the standard database tables or they can be selected dynamically when displaying a worklist by executing a specific programmed determination.

Interface /GBT/IF\_WORKLIST\_ITEM\_READ, which has two methods, needs to be implemented. Define a name for the dynamical determination of worklist items with GET\_NAME and GET\_ITEM\_BY\_WORKLIST\_ID which has the worklist item determination logic.

In this example, a worklist is implemented to displays all batches which already expired until today. This worklist should always display the current result for the date it is displayed.

The implementation of interface /GBT/IF\_WORKLIST\_ITEM\_READ has to be created using transaction SE24.

**Class Builder: Change Class ZGBT\_CL\_WL\_ITEM\_SHELF\_LIFE**

Class Interface: ZGBT\_CL\_WL\_ITEM\_SHELF\_LIFE | Implemented / Active

Properties | Interfaces | Friends | Attributes | **Methods** | Events | Types | Aliases

| Method                       | Level      | Visibility | M... | Description                                    |
|------------------------------|------------|------------|------|--|
| </GBT/IF_WORKLIST_ITEM_READ> |            |            |      |  |
| GET_ITEM_BY_WORKLIST_ID      | Static ... | Public     |      | Read worklist items by worklist ID             |
| GET_NAME                     | Static ... | Public     |      | Read implementation name to be displayed in UI |

1. Double click on method *GET\_NAME*, copy the following coding into this method, and choose Save (Ctrl+S):

```
rv_name = 'Batches expired today'(001).
```

2. Go back to the class header (F3), and double click on method *GET\_ITEM\_BY\_WORKLIST\_ID*.
3. Copy the following coding into this method and choose Save (Ctrl+S):

```
DATA:
  lt_bat_itm_guid TYPE /gbt/t_obj_guid.

FIELD-SYMBOLS:
  <ls_worklist_itm_key> LIKE LINE OF et_worklist_itm_key,
  <lv_bat_itm_guid>     LIKE LINE OF lt_bat_itm_guid.

CLEAR et_worklist_itm_key.

* Perform selection to return items with real batches
SELECT obj_guid FROM /gbt/v bat_itm INTO TABLE lt_bat_itm_guid
  WHERE expiry_date <> '00000000'
  AND expiry_date < sy-datum.

LOOP AT lt_bat_itm_guid ASSIGNING <lv_bat_itm_guid>.
  APPEND INITIAL LINE TO et_worklist_itm_key
    ASSIGNING <ls_worklist_itm_key>.
  <ls_worklist_itm_key>-worklist_id = iv_worklist_id.
  <ls_worklist_itm_key>-obj_guid     = <lv_bat_itm_guid>.
  <ls_worklist_itm_key>-obj_type    = 'BAT'.
ENDLOOP.
```

4. Activate all objects of the new class (Ctrl+F3).
5. Add the new class to the GBT customizing *Analysis of Global Batch Traceability Network* → *Maintain Available Classes for Dynamic Worklist Items*.

6. Create a worklist with dynamic items:
  1. In the SAP NetWeaver Business Client (transaction NWBC) select a role and navigate to the *Process Worklists* screen.
  2. Enter a name and a description for the new dynamic worklist to show all batches expired today.
  3. From the dropdown menu for column *Item Selection* choose the class name created before ('Batches expired today').
  4. Select the new worklist and save it.
  5. Select the new worklist and choose *Display*.

### 9.3 Creating a (static) worklist and adding items via report

Creating a worklist and adding items is possible not only interactively in the UI but also via a report.

All methods can be found in class /GBT/CL\_WORKLIST.

In general, the following steps must be performed:

1. On the entry screen, a worklist ID and description are entered plus some selection criteria if needed.
2. Check if the worklist entered already exists by calling method GET\_WORKLIST\_BY\_WORKLIST\_ID.  
If the worklist is found, store the worklist attributes for later update.
3. If the worklist does not exist yet:
  - a. Call method CREATE\_WORKLIST to create a new worklist. A worklist ID and a description have to be provided.
  - b. Call method GET\_WORKLIST\_BY\_WORKLIST\_ID to read the attributes for later update.
4. Call method ADD\_ITEM to add items to a worklist. Item key is the combination of worklist ID and object ID.
5. Call method CHANGE\_WORKLIST with the updated attributes LAST\_ITEM\_CHANGE\_BY and LAST\_ITEM\_CHANGE\_AT (provide complete worklist structure).
6. Call method CHECK\_BEFORE\_SAVE to perform a validity check on all changes.
7. Call method SAVE\_BUFFER to write the changes to the database.

The main part of the report could look as follows:

```

DATA:
gv_batnr          TYPE /gbt/batnr,
gv_matnr          TYPE /gbt/matnr,
gv_plant          TYPE /gbt/plant,
gv_logsys         TYPE /gbt/logsys,
gv_now            TYPE timestamp,
gt_object_id     TYPE /gbt/t_object_id,
gt_worklist_id   TYPE /gbt/t_worklist_id,
gt_worklist      TYPE /gbt/t_wrklst_hdr,
gt_worklist_itm  TYPE /gbt/t_worklist_itm,
gv_failed        TYPE /plmb/spi_failed_ind,
gt_message       TYPE /plmb/t_spi_msg.

FIELD-SYMBOLS:
<gs_worklist>    LIKE LINE OF gt_worklist,
<gs_object_id>   LIKE LINE OF gt_object_id,
<gs_worklist_itm> LIKE LINE OF gt_worklist_itm.

SELECT-OPTIONS:
so_batnr FOR gv_batnr,
so_matnr FOR gv_matnr,
so_plant FOR gv_plant,
so_lgsys FOR gv_logsys.

SELECTION-SCREEN SKIP 1.

```

```

PARAMETERS:
  p_wl_id TYPE /gbt/w_wrklst_i-worklist_id,
  p_wl_dsc TYPE /gbt/w_wrklst_h-worklist_descr.

GET TIME STAMP FIELD gv_now.

*-----*
* Perform your selection to receive object IDs
* using the selection criteria so_batnr, so_matnr, ...
*-----*
PERFORM get_bat_guids CHANGING gt_object_id.

*-----*
* Create new worklist and read worklist attributes
*-----*
* Check if worklist already exists
APPEND p_wl_id TO gt_worklist_id.
/gbt/cl_worklist=>get_worklist_by_worklist_id(
  EXPORTING
    it_worklist_id = gt_worklist_id
    iv_include_auth = abap_false
  IMPORTING
    et_worklist = gt_worklist ).

IF lines( gt_worklist ) IS INITIAL.
* Worklist does not yet exist -> Create
APPEND INITIAL LINE TO gt_worklist ASSIGNING <gs_worklist>.
<gs_worklist>-worklist_id = p_wl_id.
<gs_worklist>-worklist_descr = p_wl_dsc.
/gbt/cl_worklist=>create_worklist( gt_worklist ).

* Read new worklist for later update
CLEAR gt_worklist.
/gbt/cl_worklist=>get_worklist_by_worklist_id(
  EXPORTING
    it_worklist_id = gt_worklist_id
    iv_include_auth = abap_false
  IMPORTING
    et_worklist = gt_worklist ).
ENDIF.

*-----*
* Add objects as items to worklist
*-----*
* Build worklist item table
LOOP AT gt_object_id ASSIGNING <gs_object_id>.
  APPEND INITIAL LINE TO gt_worklist_itm ASSIGNING <gs_worklist_itm>.
  <gs_worklist_itm>-worklist_id = p_wl_id.
  <gs_worklist_itm>-obj_guid = <gs_object_id>-obj_guid.
  <gs_worklist_itm>-obj_type = <gs_object_id>-obj_type.
ENDLOOP.

* Write new items to buffer
/gbt/cl_worklist=>add_item( gt_worklist_itm ).

* Update items last changed by/at in worklist header for new items
LOOP AT gt_worklist ASSIGNING <gs_worklist>.
  <gs_worklist>-last_item_change_at = gv_now.
  <gs_worklist>-last_item_change_by = sy-uname.
ENDLOOP.

* Write changed worklist headers to buffer
/gbt/cl_worklist=>change_worklist( gt_worklist ).

* Check before save
/gbt/cl_worklist=>check_before_save(
  IMPORTING

```

```

    ev_failed = gv_failed
    et_message = gt_message ).

* Save
/gbt/cl_worklist=>save_buffer( ).

*****
* Read and display worklist & worklist items if wanted
*****
...

```

This kind of report can e.g. run over night to refresh a worklist once a day or triggered by a user action.

## 9.4 Custom actions in GBT Worklist

It is possible to trigger actions on Objects referenced in a Worklist. For this the BAdI /GBT/EX\_UI\_NW\_ACTION to Define and Execute Actions for Objects in the Network needs to be implemented.

You have to define the following BAdI methods:

- With method GET\_ACTION\_INFO, you add a new entry to table CT\_ACTION\_DEF.

With this entry, you provide the following information about the action, which is implemented in the BAdI:

- EVENT\_ID: Technical ID of the action  
This ID is used to define the filter of the BAdI implementation (see description for method EXECUTE\_ACTION below).
- TEXT: Description of the action, which is displayed in the dropdown box in the toolbar
- INDEX: Use this parameter to define the sequence (ascending) in which the actions are displayed in the dropdown box.

- With method EXECUTE\_ACTION, you implement the function used as an action.

Input parameters:

- IT\_OBJECT\_ID: This table contains the selected objects, identified by object type and object GUID.
- IV\_WORKLIST\_ID this method offers the reference to the Worklist at all. Therefore, it is possible to get the Worklist description and the Users assigned to.

Output/Changing parameters:

- CT\_MESSAGES: Use this table to return error or success messages.  
You have to fill the field SEVERITY and either fields MSGID and MSGNO for T100 messages, or simply field PLAINTEXT with a class text.



Example to get short text from the worklist:

```
IF iv_worklist_id IS NOT INITIAL. "Check if Action used from a Worklist
"  Read worklist details to get Short text
  APPEND iv_worklist_id TO lt_worklist_id.
  /gbt/cl_worklist=>get_worklist_by_worklist_id(
    EXPORTING
      it_worklist_id = lt_worklist_id
      iv_include_auth = abap_false
    IMPORTING
      et_worklist      = lt_worklist ).
  READ TABLE lt_worklist INTO ls_worklist INDEX 1.
ENDIF.
```

## 10 Enhancement of Network Graphic

### 10.1 Modification of node label and mouse overview

There are 3 ways to modify the graphical node content and mouse over information:

1. Use a custom DDIC structure: Within transaction SPRO go to 'SAP Global Batch Traceability'->'Business Add-Ins (BAdIs) for SAP GBT'->'User Interface'->'Modify UI Details of Object Types'. There you enter your own Z-structure (subset of structure /GBT/S\_\*\_NODE\_STRUCT) per object type. This is usually a copy of standard structure /GBT/S\_\*\_UI\_LABEL/OVERVIEW. For batch nodes you can even include class attributes by name if you have extended structure /GBT/S\_BAT\_NODE\_STRUCT with those attributes. These fields are automatically populated in the order of the DDIC structure. You don't need to do anything further.
2. Extend standard structures /GBT/S\_\*\_UI\_LABEL/OVERVIEW with a custom include with a subset of structure /GBT/S\_\*\_NODE\_STRUCT. These fields are automatically populated in the order of the DDIC structure. You don't need to do anything further.
3. Use method DATA\_MODIFY of BAdI /GBT/EX\_UI\_NW\_GFX to modify/append fields. The order of the fields matches the order of above mentioned structure /GBT/S\_\*\_UI\_LABEL/OVERVIEW with \* being the technical object type (except plant / storage location and quantity / unit are concatenated into one field).

The SAP recommended way is 1 or 2. Only for appending fields which are not part of /GBT/S\_\*\_NODE\_STRUCT you may want to use 3.

### 10.2 BAdI /GBT/EX\_UI\_NW\_GFX

The BAdI /GBT/EX\_UI\_NW\_GFX is used to modify all data shown in the graphical view of the global batch traceability network and to add additional callback functions in the context menu.

The following BAdI methods exist:

- DATA\_MODIFY modifies the following data in the graphical view:
  - Network node instances including labels and colors
  - Network edge instances
  - Tooltips of buttons and standard context menu entries
  - Register custom events of custom context menu entries on background, network nodes and edges

- CUSTOM\_GENERIC\_EVENT\_PROCESS, custom entry processing of background context menu.
- CUSTOM\_NODE\_EVENT\_PROCESS, custom entry processing of network node context menu.
- CUSTOM\_EDGE\_EVENT\_PROCESS, custom entry processing of network edge context menu.
- CLEANUP, clean up non-local modifications, for example, static class variables or function group variables, when navigating away from the graphical view. Other views, for example, the top-down or bottom-up table view, are not affected as a result.

Note: Constants for fields of parameters of method DATA\_MODIFY can be found as attributes of interface /GBT/IF\_EX\_UI\_NW\_GFX. For example, /GBT/IF\_EX\_UI\_NW\_GFX=>GC\_SETTING\_NODEZOOM\_MAX is used for altering the maximum node size via parameter CT\_SETTINGS. The default value for this setting is 65 (percent).

An example implementation of this BAdI is /GBT/EX\_UI\_NW\_GFX\_MOVE\_TYPE. It extends the tooltips of network edges with movement types and posting dates.

Another possible custom BAdI implementation could color code blocked batches by retrieving this information on demand from the original ERP system via RFC call.

**Caution:**

The implementation of this BAdI can slow down the roundtrips of the graphical view, including time for initial display and root node change.

## 11 Important GBT Classes and Examples

**Disclaimer:**

There is currently no class interface which is open to public use. Nevertheless, programming enhancements may need to access GBT data. The following will give an overview about important internal used classes. But they may change without any warning if GBT development needs to adjust them.

Access to the Network: /GBT/CL\_NW\_READ

Access and Maintain GBT-Events, Ties, and Connectors: /GBT/CL\_NW\_DB

Access and maintain objects used as Network Node and Connectors: /GBT/CL\_TRC\_BO\_<...>

Generic access to Objects used as Network Node and for Connectors: /GBT/CL\_TRC\_OBJ

Access to Master Data Objects: /GBT/CL\_<...>\_BO (Instantiation by /GBT/CL\_\*\_FACTORY)

Info about connected Systems: /GBT/CL\_SYS\_INFO

## 11.1 Example for Maintain and Extract methods

Let's assume the Table /GBT/O\_BAT\_ITM was enhanced by ZZQUAN and ZZUOM. This should cumulate the quantity delivered from a specific Vendor. We need to access the node data and to update existing data of a node. The following coding example shows the usage of /GBT/CL\_TRC\_BO\_<...> in the context of BAdI /GBT/EX\_IL\_EVENT\_ENHANCE by implementing the method EVENT\_ENHANCE.

The example covers the methods:

```
/gdt/cl_trc_bo_<...>=>get_single_itm_by_key - getting a single data set
/gdt/cl_trc_bo_<...>=>extract_itm - get a table of data sets in maintain structure
/gdt/cl_trc_bo_<...>=>maintain - set a table of data sets for update/insert
/gdt/cl_trc_obj=>save - do a save to all changed node and Connector Objects
METHOD /gdt/if_ex_il_event_enhance~event_enhance.
  FIELD-SYMBOLS: <ls_event_maintain> LIKE LINE OF ct_event_maintain.
  DATA: lt_puri_key TYPE /gdt/t_puri_key,
         lt_bat_itm_key TYPE /gdt/t_bat_itm_key.
  FIELD-SYMBOLS: <ls_puri_key> TYPE /gdt/s_puri_key,
                 <ls_bat_itm_key> TYPE /gdt/s_bat_itm_key.
  DATA: ls_puro_hdr TYPE /gdt/s_puro_hdr_data,
         lt_bat_maint_itm TYPE /gdt/t_bat_maint_itm.

  FIELD-SYMBOLS: <ls_bat_maint_itm> TYPE /gdt/s_bat_maint_itm.

  " 1. Get Document for PURchase order Item (PUI) (filter by Vendor)
  and BATch (BAT)
  LOOP AT ct_event_maintain ASSIGNING <ls_event_maintain>.
    IF <ls_event_maintain>-obj_type_from = 'PUI' AND
       <ls_event_maintain>-obj_type_to = 'BAT'.
      CLEAR: lt_puri_key, lt_bat_itm_key.

      " Get Vendor of Purchase Order
      ASSIGN <ls_event_maintain>-r_obj_key_from->* TO <ls_puri_key>.
      /gdt/cl_trc_bo_puri=>get_single_itm_by_key(
        EXPORTING
          is_key = <ls_puri_key> " Key for Purchasing Document Item
        IMPORTING
          es_hdr_data = ls_puro_hdr " Data of Purchasing Document Header
      ).

      IF ls_puro_hdr-vendor <> 'VENDOR_A'. "Filter on A Vendor
        CONTINUE. "not needed
      ENDIF.

      " Get Quantity of Batch Item
      ASSIGN <ls_event_maintain>-r_obj_key_to->* TO <ls_bat_itm_key>.
      APPEND <ls_bat_itm_key> TO lt_bat_itm_key.
      /gdt/cl_trc_bo_bat=>extract_itm(
        EXPORTING
          it_item_key = lt_bat_itm_key "
        IMPORTING
          et_item = lt_bat_maint_itm "
      ).
      READ TABLE lt_bat_maint_itm ASSIGNING <ls_bat_maint_itm> INDEX 1.
      IF sy-subrc = 0.
        " 2. take the Quantity & UoM from MDoc Item (alternative use Quantity of Event)
        IF <ls_bat_maint_itm>-zzuom IS NOT INITIAL.
          IF <ls_bat_maint_itm>-zzuom <> <ls_event_maintain>-unit.
```

```

        CONTINUE. "something wrong-what to do???"
    ENDIF.
ELSE.
    <ls_bat_maint_itm>-zzuom = <ls_event_maintain>-
unit. "initialize UoM
    ENDIF.

    " calculate new Quantity
    " Attention! Unsolved so far in this
example: how to detect if the Quantity is already added (for Reload of ex
iting Events this is wrong)
    IF <ls_event_maintain>-db_cr_ind = 'S'.
        "add quantity
        <ls_bat_maint_itm>-zzquan = <ls_bat_maint_itm>-
zzquan + <ls_event_maintain>-quantity.
    ELSE. " Cancelation
        "subtract quantity
        <ls_bat_maint_itm>-zzquan = <ls_bat_maint_itm>-
zzquan - <ls_event_maintain>-quantity.
    ENDIF.
ELSE.
    CONTINUE. "something wrong-what to do???"
ENDIF.

    " 3. Store / update / maintain Batch at Location (Plant/Stge_Loc)
(/GBT/O_Bat_Itm (extended Fields)) with the Quantity.
    /gbt/cl_trc_bo_bat=>maintain(
        EXPORTING
            it_item      =   lt_bat_maint_itm  " Batch Maintenance for inter
nal tracking member
        ).
    ENDIF.
ENDLOOP.

    " Save Bat Item by saving all changes to Network Objects.
    /gbt/cl_trc_obj=>save( ).
ENDMETHOD.

```

## 11.2 Example for setting appended fields

The example covers extension of the method /GBT/IF\_TRC\_OBJ~GET\_UI\_DATA\_BY\_GUID by an [Implicit Enhancements](#).

1. Append 2 fields `zssold_to_name1` TYPE `bu_mcname1` and `zssold_to_name2` TYPE `bu_mcname2` to structure `/GBT/S_SALI_NODE_STRUCT`.
2. Do an implicit enhancement of `/GBT/CL_TRC_BO_SALI->/GBT/IF_TRC_OBJ~GET_UI_DATA_BY_GUID` and add at the end of the method the following logic to set `zssold_to_name1` and `zssold_to_name2`:

```
DATA:
    lo_prt_bo          TYPE REF TO /gbt/cl_prt_bo.
FIELD-SYMBOLS:
<ls_sali_node_struct> TYPE /GBT/S_SALI_NODE_STRUCT.

*appended:
zssold_to_name1 TYPE bu_mcname1 zssold_to_name2 TYPE bu_mcname2

*Get the GBT Partner class for Customer
lo_prt_bo ?= /gbt/cl_prt_factory=>get_instance( iv_gos_otype_name = /gbt/
cl_prt_bo=>cv_gos_otype_customer ).

LOOP at et_data assigning <ls_sali_node_struct> .

lo_prt_bo->/gbt/if_prt_bal~get_name(
    EXPORTING
        iv_prtnr = <ls_sali_node_struct>-sold_to " ERP Customer Number
        iv_logsys = <ls_sali_node_struct>-logsys " Logical System
    IMPORTING
        ev_name1 = <ls_sali_node_struct>-zssold_to_name1
        ev_name2 = <ls_sali_node_struct>-zssold_to_name2
).
" missing name => show key instead
IF <ls_sali_node_struct>-zssold_to_name1 IS INITIAL AND
<ls_sali_node_struct>-zssold_to_name2 IS INITIAL.
    /gbt/cl_fmt_util=>encapsulate_string(
        EXPORTING
            iv_info = <ls_sali_node_struct>-sold_to
        IMPORTING
            ev_info_encapsulated = <ls_sali_node_struct>-name1
    ).
ENDIF.
ENDLOOP.
```

## 12 Use of Implicit Enhancements

Implicit enhancements can be placed at start and end of methods and function modules.

The implicit enhancement options can be displayed in the ABAP Editor by following the path: *Edit -> Enhancement Operations -> Show Implicit Enhancement Options*, and then enhanced using [source code plug-ins](#). You directly put your cursor on the enhancement option and create your implementations by right click. See also <http://wiki.sdn.sap.com/wiki/display/ABAP/How+To+Do+Implicit+Enhancement> .

### Attention

There is a risk to use implicit enhancements. Please be aware that coding might change and that this also may affect the method interface or use of this interface. Also the method might be called at different places which not be expected before.

## 13 SOA Service Enhancement

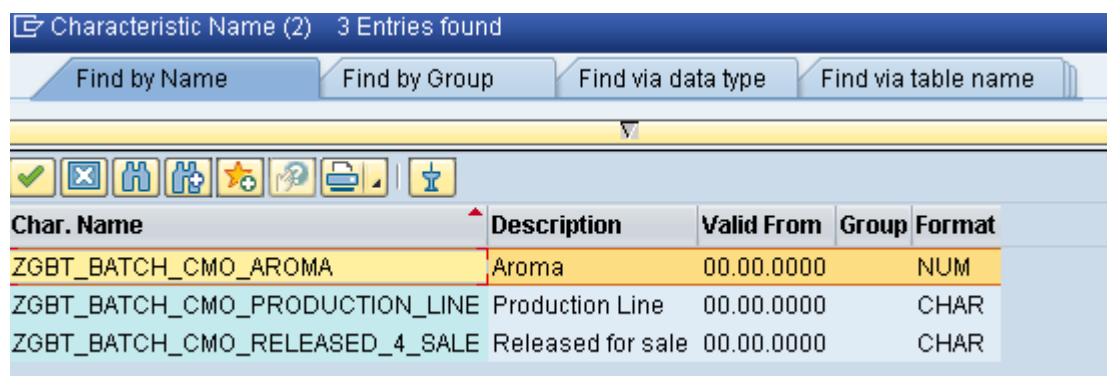
### 13.1 SOA Inbound Services

The SOA service interfaces supports also customer enhancements. It is possible to apply new data fields or even complete new data nodes. The procedure of Enterprise Service enhancement is described in the official available SAP Enterprise Service Enhancement Guide 2.0 (<http://scn.sap.com/docs/DOC-18402>).

There exists the possibility to enhance the standard SOA interfaces for master data and the goods movement event data. Also, for the standard identification of a sender party can be enhanced or overruled.

The below example shows a good known practice, how the **TrackedGoodsMovementNotification\_In** (Batch-related event data import) service interface can be enhanced by adding new data fields to classify batches. The steps below describe the necessary development actions in detail. You have to do two different activities in two different systems. These are the SAP Enterprise Service Repository (ESR) and the SAP BGT ABAP backend. If you do not know the URL to the SAP ESR you can use the transaction SPROXY to launch the SAP Exchange Infrastructure in the SAP GBT backend.

1. Firstly, it is necessary to create a customer own software component version and namespace in the SAP ESR, as described in detail in the Enterprise Service Enhancement Guide 2.0. In the ESR you find also the technical name of the data type you want to enhance. In our example it is the data type TrackedGoodsMovmntBatchObj (element node for batch).
2. Clarify which additional fields are necessary for the batch. In our example we use new attributes like ProductionLine, Aroma and ReleasedForSales. These attributes need to be created as characteristics with ABAP transaction CT04 before.

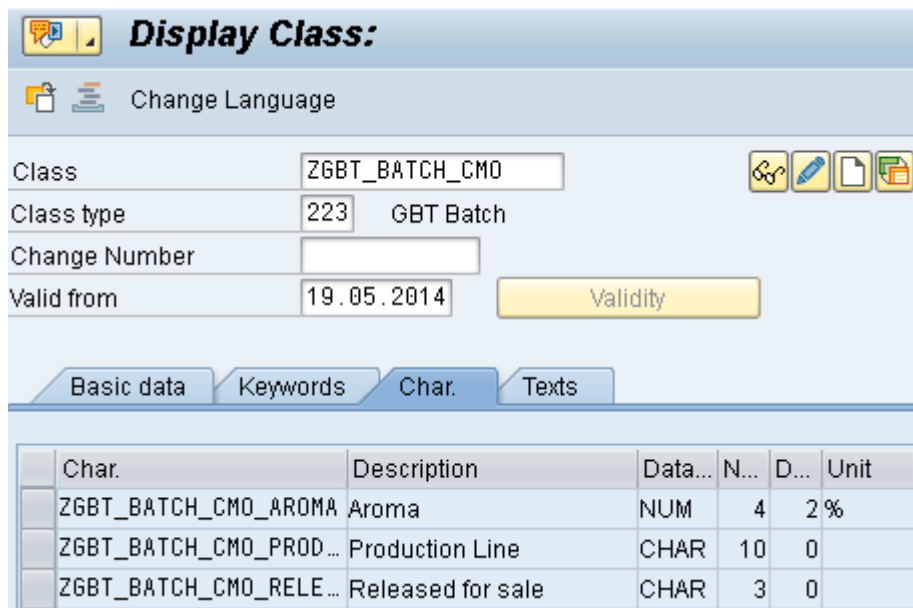


Characteristic Name (2) 3 Entries found

Find by Name Find by Group Find via data type Find via table name

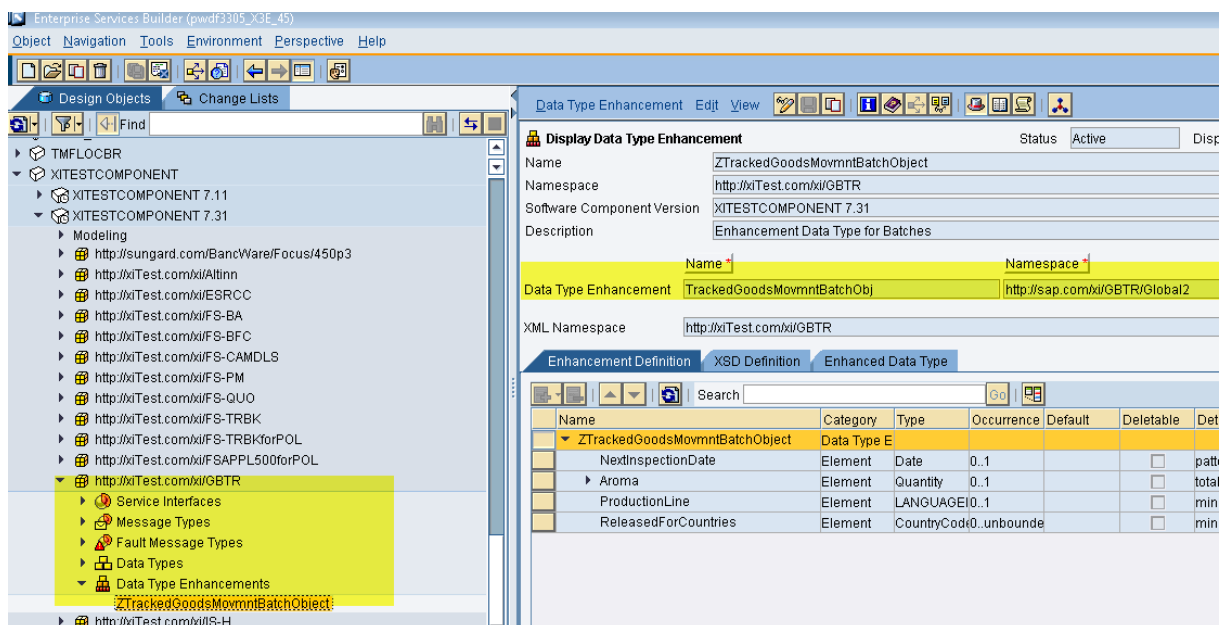
| Char. Name                     | Description       | Valid From | Group | Format |
|--------------------------------|-------------------|------------|-------|--------|
| ZGBT_BATCH_CMO_AROMA           | Aroma             | 00.00.0000 |       | NUM    |
| ZGBT_BATCH_CMO_PRODUCTION_LINE | Production Line   | 00.00.0000 |       | CHAR   |
| ZGBT_BATCH_CMO_RELEASED_4_SALE | Released for sale | 00.00.0000 |       | CHAR   |

Screen-shot: Additional characteristics



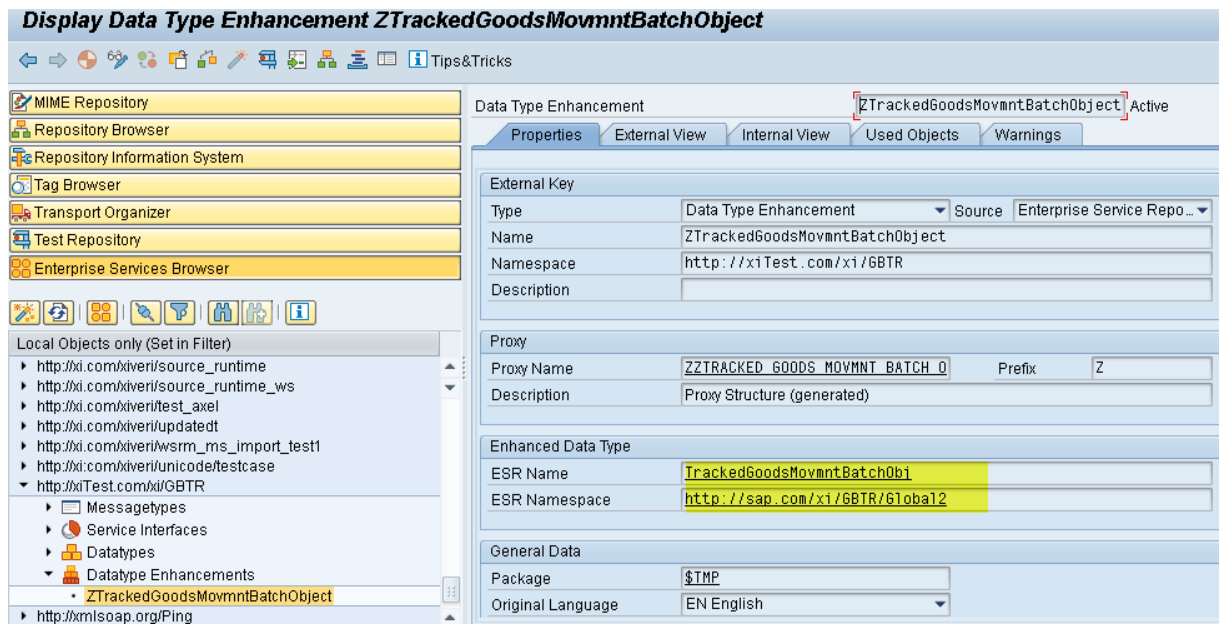
Screen-shot: Assignment of the characteristics to a class

3. Assign the newly created characteristics to an existing classification class or create a new one. In our example we use a new class with name ZGBT\_BATCH\_CMO and class type '223'.
4. Enhance the data type TrackedGoodsMovmntBatchObj in the SAP ESR with the new characteristics you created in the step before. This can be done by creating a data type enhancement, which refers to the data type TrackedGoodsMovmntBatchObj. Assign this data type enhancement to your own created software component version and namespace, created in step 1.
5. Check and activate the data type enhancement.

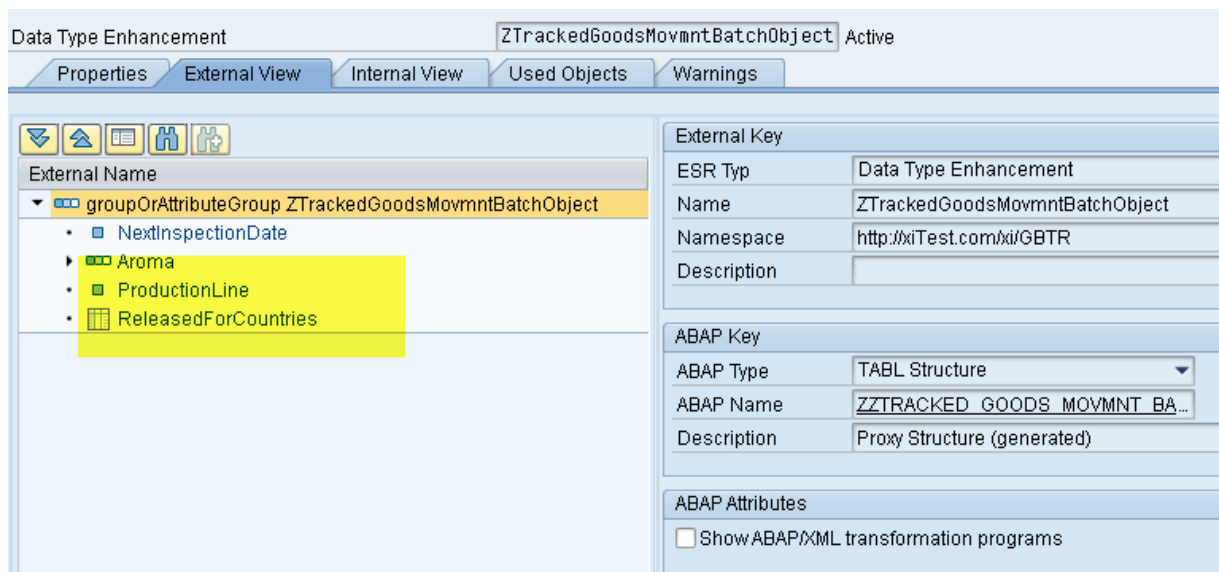


Screen-shot: Data type Enhancement in the SAP ESR

6. Go to the SAP GBT ABAP backend system. Start transaction SPROXY.
7. Navigate to your software component version and namespace. Double-click on the data type enhancement and regenerate the data type enhancement. Save and activate it. During the activation phase the existing ABAP DDIC proxy of the data type TrackedGoodsMovmntObj is enhanced by a append structure which consists the new attributes.



Screen-shot: The data type enhancement generated in the SAP GBT backend (transaction SPROXY)



Screen-shot: Structure of the data type enhancement



| Component          | Typing Method | Component Type     | Data Type | Length | Deci... | Short Description              |
|--------------------|---------------|--------------------|-----------|--------|---------|--------------------------------|
| LOCATION ID        | Types         | /GBT/LOCATION I... |           | 0      | 0       | Proxy Structure (generated)    |
| PRODUCTION DATE    | Types         | /GBT/DATE          | DATS      | 8      | 0       | Proxy Data Element (generated) |
| EXPIRATION DATE    | Types         | /GBT/DATE          | DATS      | 8      | 0       | Proxy Data Element (generated) |
| SUPPLIER PARTY ... | Types         | /GBT/PARTY INTE... |           | 0      | 0       | Proxy Structure (generated)    |
| SUPPLIER BATCH ... | Types         | /GBT/BATCH ID      |           | 0      | 0       | Proxy Structure (generated)    |
| ORIGIN COUNTRY ... | Types         | /GBT/COUNTRY CO... | CHAR      | 3      | 0       | Proxy Data Element (generated) |
| ORIGIN REGION C... | Types         | /GBT/REGION CODE   |           | 0      | 0       | Proxy Structure (generated)    |
| .APPEND            | Types         | ZTRACKED GOODS...  |           | 0      | 0       | Proxy Structure (generated)    |
| ZNEXT INSPECTIO... | Types         | ZDATE1             | DATS      | 8      | 0       | Proxy Data Element (generated) |
| ZAROMA             | Types         | ZQUANTITY          |           | 0      | 0       | Proxy Structure (generated)    |
| ZPRODUCTION LINE   | Types         | ZLANGUAGEINDEPE... | CHAR      | 40     | 0       | Proxy Data Element (generated) |
| ZRELEASED FOR C... | Types         | ZCOUNTRY CODE I... |           | 0      | 0       | Proxy Table Type (generated)   |

Screen-shot: Append structure of the data type enhancement to the origin data type

- In the last step a BADI implementation for interface /GBT/IF\_EX\_IL\_B2B\_TRC\_GDS\_MVM needs to be created, which maps the incoming batch data to the API from SAP GBT. Therefore, the corresponding interface method /GBT/IF\_EX\_IL\_B2B\_TRC\_GDS\_MVM~MAP\_BATCH has to be implemented. Below you find a code example.

```

METHOD /gbt/if_ex_il_b2b_trc_gds_mvm~map_batch.
  FIELD-SYMBOLS: <lf_batch> TYPE /gbt/tracked_goods_movmnt_batc,
                 <lf_bat_maint> TYPE /gbt/s_bat_maint,
                 <lf_rel_4_country> TYPE zcountry_code.

  DATA:
    ls_clf_val_num      LIKE LINE OF <lf_bat_maint>-clf-t_val_num,
    ls_clf_val_char     LIKE LINE OF <lf_bat_maint>-clf-t_val_char.

  *->Customer Enhancements for batches
  LOOP AT it_batch ASSIGNING <lf_batch>.
  READ TABLE ct_bat_maint ASSIGNING <lf_bat_maint> INDEX sy-tabix.
  IF sy-subrc = 0.
    "NextInspectionDate
    <lf_bat_maint>-nextinspec_date = <lf_batch>-
znext_inspection_date.
    "Classification Characteristics
    <lf_bat_maint>-clf-s_alloc-classnum      = 'ZGBT_BATCH_CMO'.
    <lf_bat_maint>-clf-s_alloc-classtype    = '223'.
    <lf_bat_maint>-clf-s_alloc-objecttable = '/GBT/BATCH'.
    "--Aroma
    IF <lf_batch>-zaroma-content IS NOT INITIAL.
      ls_clf_val_num-charact      = 'ZGBT_BATCH_CMO_AROMA'.
      ls_clf_val_num-unit_from    = <lf_batch>-zaroma-unit_code.
      ls_clf_val_num-value_from   = <lf_batch>-zaroma-content.
      APPEND ls_clf_val_num TO <lf_bat_maint>-clf-t_val_num.
      CLEAR ls_clf_val_num.
    ENDIF.
    "--Production line
    IF <lf_batch>-zproduction_line IS NOT INITIAL.
      ls_clf_val_char-charact

```

```

        = 'ZGBT_BATCH_CMO_PRODUCTION_LINE'.
    ls_clf_val_char-value_char = <lf_batch>-zproduction_line.
    APPEND ls_clf_val_char TO <lf_bat_maint>-clf-t_val_char.
    CLEAR ls_clf_val_char.
ENDIF.
"--Released for sale
LOOP AT <lf_batch>-zreleased_for_countries
        ASSIGNING <lf_rel_4_country>.

    ls_clf_val_char-charact
        = 'ZGBT_BATCH_CMO_RELEASED_4_SALE'.
    ls_clf_val_char-value_char = <lf_rel_4_country>.
    APPEND ls_clf_val_char TO <lf_bat_maint>-clf-t_val_char.
    CLEAR ls_clf_val_char.
ENDLOOP.

ENDIF.
ENDLOOP.
ENDMETHOD.

```

- Test the service interface TrackedGoodsMovementNotification\_In within the test environment (F8) of the transaction SPROXY. Below a xml snippet is depicted, which supports the enhanced attributes in the batch element node.

```

...
<Batch>
  <ID>2002_1</ID>
  <MaterialID>GBT_FINISH1</MaterialID>
  <LocationID>0001</LocationID>
  <SubLocationID>0001</SubLocationID>
  <ExpirationDate>2020-02-22</ExpirationDate>
  <OriginCountryCode>CA</OriginCountryCode>
  <OriginRegionCode>ON</OriginRegionCode>
  <gbtr:NextInspectionDate>2015-02-19</gbtr:NextInspectionDate>
  <gbtr:Aroma unitCode="%">19.15</gbtr:Aroma>
  <gbtr:ProductionLine>LINE_B</gbtr:ProductionLine>
  <gbtr:ReleasedForCountries>DE</gbtr:ReleasedForCountries>
  <gbtr:ReleasedForCountries>FR</gbtr:ReleasedForCountries>
</Batch>
...

```

## 13.2 SOA Outbound Service

With SAP GBT 2.0 FP02 the SAP GBT offers also an SOA outbound web service interface. This outbound web service interface will be called via an example report, which select the top-down event data by deliveries. In brief, the outbound web service interface uses the same message type (data structure) as the inbound web service interface. This means that, when the inbound web service interface will be structurally enhanced then in the same way the outbound web service interface is also be enhanced.

The outbound web service also provides BAdI's to enhance the business data provisioning for the enhanced outbound web service interface. So it is possible to enhance or change the event key and the business object details mapping.

The report /GBT/R\_SEND\_TRCD\_FOR\_DEL\_GOODS is an example implementation, which shows how the outbound web service interface can be used. It contains the basic steps like authorization

check, selecting GBT event data, mapping of internal to external data, applying ID tagging information and finally sending of the transformed SAP GBT data to an external system.

### 13.2.1 Enhancement of the identifier tagging

The outbound service provides the functionality to change the tagging of used identifiers in the sending message. To avoid identifier (ID) clashes of business objects, which potentially came from different ERP systems, it is necessary provide an ID tagging. The ID tagging provide the information about the issuer of the ID. The ID tagging uses the standard SAP GDT attributes for Identifiers like Scheme Agency Id and Scheme ID.

The SAP GBT 2.0 FP02 delivers three different standard implementations to provide an identifier tagging. These are ID tagging on logical system, SLD business system ID and Global Location Number for plants.

| ABAP class                 | Description   |
|----------------------------|---|
| /GBT/CL_TRCD_IDS_LOGSYS    | Identifier Key Mapping for Logical System               |
| /GBT/CL_TRCD_IDS_SLD_BS_ID | Identifier Key Mapping for SLD Business Key             |
| /GBT/CL_TRCD_IDS_PLANT_GLN | Identifier Key Mapping for Plant Global Location Number |

In the SAP GBT standard ID tagging we use the ID tagging only on the first key level. This means for example for batches, which consists of a concatenated key like batch, material and plant number we provide the ID tagging only for the batch number in the concatenated key. This is sufficient to uniquely identify objects in the overall message content. The same is true for all other objects like Handling Unit and Document References (Purchase Order, Sales Order, Delivery...). Below a xml snippet is shown, which uses for example the SLD Business Key ID mapping.

```

...
<GoodsMovementEvent>
  <From>
    <BatchDocumentReference>
      <ID schemeAgencyID="CMO_001">2002_1</ID>
      <MaterialID>GBT_RAW1</MaterialID>
      <LocationID>0001</LocationID>
      <SubLocationID>0001</SubLocationID>
    </BatchDocumentReference>
  </From>
  <To>
    <DocumentReference>
      <ID schemeAgencyID="CMO_001">1001081</ID>
      <TypeCode>97</TypeCode>
      <CreationDate>2014-01-01</CreationDate>
    </DocumentReference>
  </To>
...

```

If the customer or partner needs a special ID tagging, an interface is provided, which allows an own implementation.

In a public constructor of the own ID tagging provider ABAP class, it is necessary to provide an own scheme ID and a description for that ID, as depicted in the code snippet below:

```

method CONSTRUCTOR.
  /GBT/IF_TRCD_IDS~GV_SCHEMA      = 'ZSCHEMA_ID'.
  /GBT/IF_TRCD_IDS~gv_description = text-001.
endmethod.

```

The interface is called:

**/GBT/IF\_TRCD\_IDS** and has the following methods and attributes:

- GET\_KEYS: Map internal to external keys

| Parameter       | TYPE      | Data Type                | Description  |
|-----------------|-----------|--------------------------|--|
| IS_KEY_PROVIDER | Importing | /GBT/S_TRCD_KEY_PROVIDER | Internal Key Provider like logical system, plant...        |
| IS_KEY_CONTEXT  | Importing | /GBT/S_TRCD_KEY_CONTEXT  | Identifier context   |
| IV_VALUE_INT    | Importing | CSEQUENCE                | Internal Key Value   |
| ES_VALUE_EXT    | Exporting | /GBT/S_TRCD_IDS          | External Key Values (SchemeAgencyID, SchemeID and Content) |

- CLEAR\_BUFFER: Clear internal key mapping buffer

To provide an own implementation for ID tagging, it is necessary to implement this interface method in an own ABAP class. A factory class is available to create an instance as a singleton.

**/GBT/CL\_TRCD\_IDS\_FACTORY** Factory class for Tracked Goods Movement Identifier Tagging

- GET\_INSTANCE: Get instance of identifier tagging provider

| Parameter    | TYPE      | Data Type        | Description  |
|--------------|-----------|------------------|--|
| IV_SCHEME_ID | Importing | /GBT/SCHEME_ID   | Scheme ID like SAP_LOGSYS, SAP_SLD_BSID, SAP_PLANT_GLN, etc. |
| ER_ID_SCHEME | Exporting | /GBT/IF_TRCD_IDS | External Key Providers for Identifiers                       |

- GET\_SCHEMES: Get meta information of all schema providers

| Parameter | TYPE      | Data Type                              | Description                    |
|-----------|-----------|--|--------------------------------|
| ET_SCHEME | Exporting | /GBT/CL_TRCD_IDS_FACTORY=>TT_SCHEME_ID | List of schemes of ID provider |

Attributes and constants:

| Attribute        | Level    | Data Type      | Description        |
|------------------|----------|----------------|--------------------|
| GV_SCHEMA        | Instance | /GBT/SCHEME_ID | Schema ID          |
| GV_DESCRIPTION   | Instance | /GBT/DESCR     | Schema description |
| CV_SAP_LOGSYS    | Constant | /GBT/SCHEME_ID | SAP_LOGSYS         |
| CV_SAP_SLD_BS_ID | Constant | /GBT/SCHEME_ID | SAP_SLD_BS_ID      |
| CV_SAP_PLANT_GLN | Constant | /GBT/SCHEME_ID | SAP_PLANT_GLN      |

The ID tagging is used in the example report mentioned above. The selection screen of this report is depicted below:

**Send Traceability Information For Delivered Goods**

**Selection**

|                  |                                     |    |                      |  |
|------------------|-------------------------------------|----|----------------------|--|
| Delivery         | <input type="text"/>                | to | <input type="text"/> |  |
| Date of Delivery | <input type="text"/>                | to | <input type="text"/> |  |
| Ship To Party    | <input type="text"/>                | to | <input type="text"/> |  |
| Logical System   | <input checked="" type="checkbox"/> | to | <input type="text"/> |  |
| Network Type     | Batch Network                       |    |                      |  |

**Technical Settings**

|   |                                     |
|---|-------------------------------------|
| Logical Port (Target System)                          | <input checked="" type="checkbox"/> |
| Network View (Data Filter)                            | <input type="text"/>                |
| Provider of Identifiers                               | SAP Logical System                  |
| <input checked="" type="checkbox"/> Test / Simulation |                                     |

Dropdown menu options for Provider of Identifiers:

- SAP Logical System
- SAP Logical System
- SAP Plant with Global Location Number
- SAP SLD Business System ID
- Customer Enhancement ID Provider

### 13.2.2 Enhancement of the TrackedGoodsMovementNotification\_Out interface

In chapter 11.1 above the process is described how to enhance the SOA inbound service interface when the SAP XI, as a so called middleware, is used in the customer system landscape to control and orchestrate centrally the overall message flow.

**HINT:** The inbound and the outbound SOA web service interface use the same message type. This means, when you enhance the inbound service interface, also the outbound interface is enhanced accordingly and vice versa.


In this chapter another possibility to enhance SOA service interfaces is described, when no SAP XI is used at customer side.

The step-by-step description below, supports the use case that existing classification data needs to be exposed by the outbound web service interface on the batch detail level.

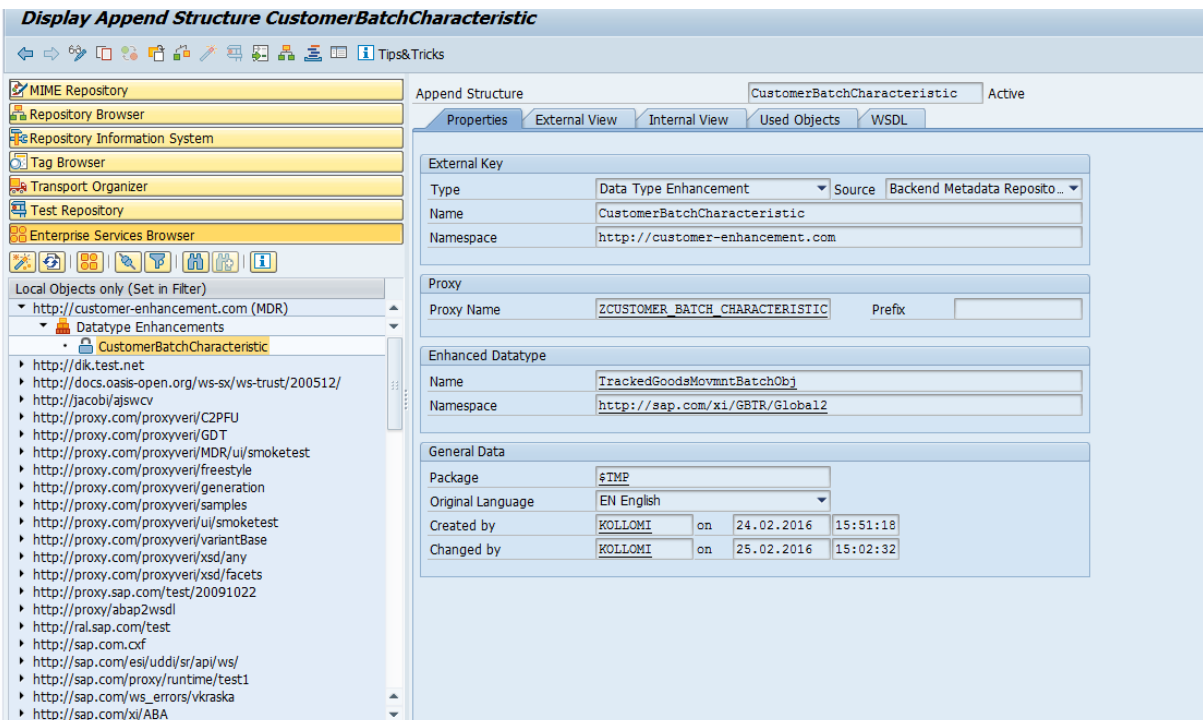
1. Register customer namespace with transaction **SPXNGENAPPL**, for instance namespace = `http://customer-enhancement.com` and Generation Source = Backend Metadata Repository.

**Change View "Assignment Namespace <-> Metadata Repository": Overview**

| Namespace                       | Generation Source           |
|---------------------------------|-----------------------------|
| http://customer-enhancement.com | Backend Metadata Repository |

2. Start transaction **SPROXY**
3. Press on the button 'Create MDR Proxy' 
4. Choose option: Data type Enhancement and press continue.
5. Choose option: Backend and press continue.
6. Enter an own qualified name and namespace of the data type enhancement, for instance Name = ZBatchDetailsEnhancement and namespace = <http://customer-enhancement.com>.
7. Enter the qualified name and namespace of the data type, which needs to be enhanced, for instance name = TrackedGoodsMovmntBatchObj and namespace = <http://sap.com/xi/GBTR/Global2>. Press continue.
8. Choose a valid development package or store it local in the system. Choose a prefix, if you want and press continue.
9. Press button 'Complete' to finalize the data type enhancement creation.
10. Save and activate the data type enhancement.

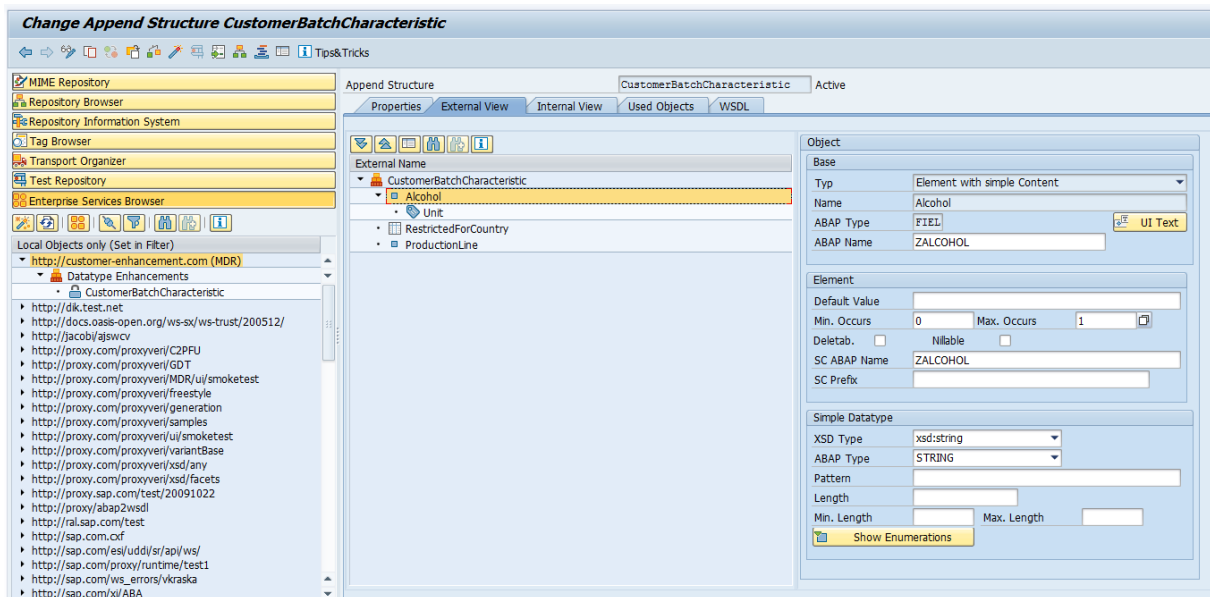
Below, the activated data type enhancement is shown within the transaction SPROXY.



The screenshot displays the SAP SPROXY transaction 'Display Append Structure CustomerBatchCharacteristic'. The interface is divided into several sections:

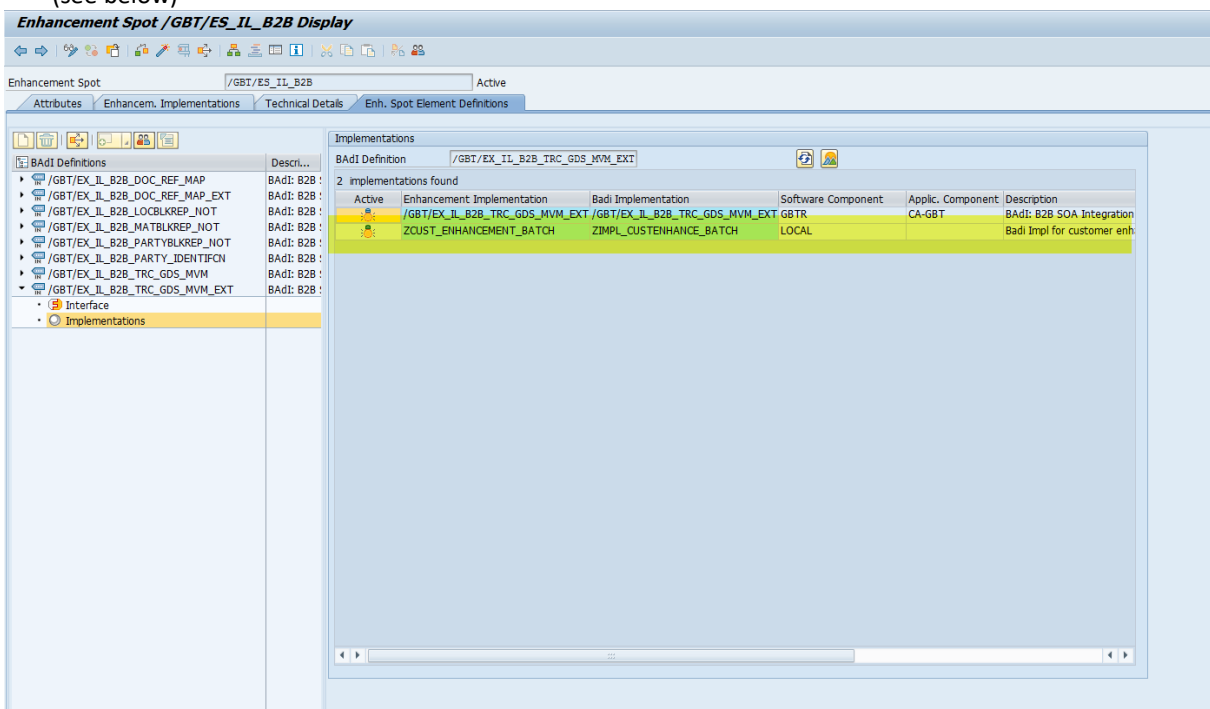
- Left Panel (Local Objects only):** Shows a tree view of repository objects. The selected object is 'CustomerBatchCharacteristic' under 'Datatype Enhancements'.
- Top Panel (Append Structure):** Shows the 'CustomerBatchCharacteristic' is active. Tabs include 'Properties', 'External View', 'Internal View', 'Used Objects', and 'WSDL'.
- External Key Section:**
  - Type: Data Type Enhancement
  - Source: Backend Metadata Reposito...
  - Name: CustomerBatchCharacteristic
  - Namespace: http://customer-enhancement.com
- Proxy Section:**
  - Proxy Name: ZCUSTOMER\_BATCH\_CHARACTERISTIC
  - Prefix: (empty)
- Enhanced Datatype Section:**
  - Name: TrackedGoodsMovmntBatchObj
  - Namespace: http://sap.com/xi/GBTR/Global2
- General Data Section:**
  - Package: \$TMP
  - Original Language: EN English
  - Created by: KOLLOMI on 24.02.2016 15:51:18
  - Changed by: KOLLOMI on 25.02.2016 15:02:32

11. In the change-mode it is now possible to add arbitrary elements and attributes. Therefore, it is necessary to switch to tab 'External View' or 'Internal View' and set the cursor to the top level node (here: for instance, CustomerBatchCharacteristic) and open the context menu. In our example we add three new elements like Alcohol, restricted for Country and Production Line (see below).

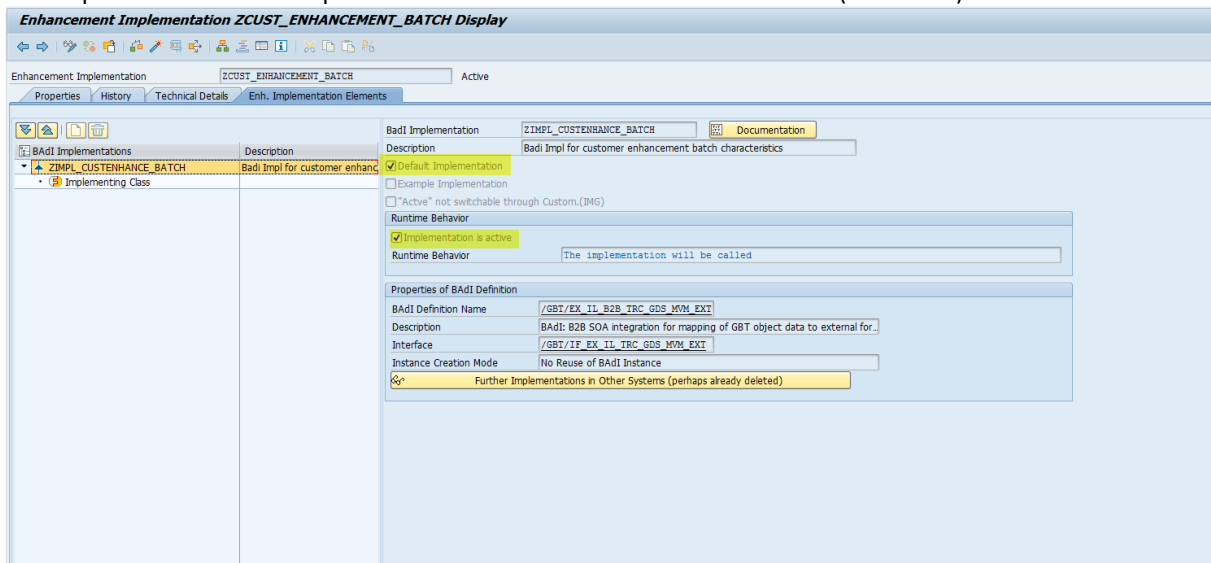


12. The next step is to provide a BADI implementation for the data type enhancement in the outbound service. The outbound service offers a BADI interface to provide access to the different Node-Structures. In this example the batch detail node was enhanced, therefore the method MAP\_BATCH needs to be implemented to map the GBT internal data to the external outbound web service interface data. Use transaction SE18 and choose the enhancement spot /GBT/ES\_IL\_B2B.

13. Right mouse-click on the implementation of BAdI-Definition /GBT/EX\_IL\_B2B\_TRC\_GDS\_MVM\_EXT and choose 'Create BAdI-Implementation'.
14. Press the create button on the popup appearing.
15. Provide an arbitrary name (in a customer system something with a starting Z) of the Enhancement Implementation and a descriptive text. Press button 'Enter'.
16. Choose a proper development package (here: Local Object). Press the button 'Enter'.
17. Choose the currently created Enhancement Implementation and create an own BAdI Implementation.
18. Choose an arbitrary name (for instance: Customer Z name), a descriptive text and an Implementation Class (see below)



19. Double-click on the newly created BAdI implementation and mark the checkboxes for 'Default Implementation' and 'Implementation is active'. Press save and activate (see below).



20. Double-click on the Implementation Class. Double-click on the method /GBT/IF\_IL\_TRC\_GDS\_MVM\_EXT~MAP\_BATCH. Provide a ABAP code implementation to read the classification data through the GBT API: /gibt/cl\_clf\_bo=>get\_clf\_classification. Below an example coding is depicted to provide the necessary information from GBT and the corresponding mapping from the internal to the external data representation. It is possible to copy and paste the complete coding. It is only necessary to adapt the class name and classification attributes according to your attributes.

```

METHOD /gibt/if_ex_il_trc_gds_mvm_ext~map_batch.
  DATA:
    lo_struct          TYPE REF TO cl_abap_structdescr,
    ls_bat_details    TYPE /gibt/tracked_goods_movmnt_batc,
    lv_class          TYPE klasse_d,
    lv_class_type     TYPE klassenart,
    ls_class          TYPE /gibt/s_class,
    lt_attr           TYPE /gibt/cl_attr=>tt_attr,
    lv_obj_guid       TYPE /gibt/obj_guid,
    ls_msg_list       TYPE /gibt/s_msg_list,
    lv_indx           TYPE sy-tabix.

  FIELD-SYMBOLS:
    <ls_obj_data>     TYPE /gibt/cl_nw_read=>ts_obj_type_data,
    <lt_data_tab>     TYPE ANY TABLE,
    <ls_obj_type_data> TYPE any,
    <lv_comp>         TYPE any,
    <ls_comp_def>     TYPE abap_compdescr,
    <ls_attr>         LIKE LINE OF lt_attr,
    <ls_bat_detail>  LIKE LINE OF ct_bat_detail.

  READ TABLE it_event_obj_data WITH KEY obj_type = iv_gbt_obj_type ASSIGNING <ls_obj_data>.
  IF sy-subrc = 0.

    ASSIGN <ls_obj_data>-data_tab->* TO <lt_data_tab>.

    LOOP AT <lt_data_tab> ASSIGNING <ls_obj_type_data>.
      CLEAR: lv_class, lv_class_type, lv_obj_guid.
      lv_indx = lv_indx + 1.

      AT FIRST.
        lo_struct ?= cl_abap_typedescr=>describe_by_data( <ls_obj_type_data> ).
      ENDAT.

      LOOP AT lo_struct->components ASSIGNING <ls_comp_def> WHERE name = 'CLASS_TYPE' OR
        name = 'CLASS' OR
        name = 'HDR_GUID'.

```



```

ASSIGN COMPONENT <ls_comp_def>-name
      OF STRUCTURE <ls_obj_type_data> TO <lv_comp>.

CASE <ls_comp_def>-name.

  WHEN 'CLASS'.
    lv_class = <lv_comp>.

  WHEN 'CLASS_TYPE'.
    lv_class_type = <lv_comp>.

  WHEN 'HDR_GUID'.
    lv_obj_guid = <lv_comp>.

  WHEN OTHERS.

ENDCASE.
ENDLOOP.

IF lv_class IS NOT INITIAL AND lv_class_type IS NOT INITIAL.

  /gbt/cl_clf_bo=>get_clf_classification( EXPORTING iv_object_tab = '/GBT/BATCH'
                                         iv_object_key = lv_obj_guid
                                         iv_class_type = '223'
                                         IMPORTING es_class      = ls_class
                                                  et_attr       = lt_attr
                                                  es_msg_list   = ls_msg_list ).

  IF ls_class-class = 'ZSOA_ENHANCEMENT01'.
    READ TABLE ct_bat_detail INDEX lv_indx ASSIGNING <ls_bat_detail>.
    IF sy-subrc <> 0.
      CONTINUE.
    ENDIF.

    LOOP AT lt_attr ASSIGNING <ls_attr>.
      CASE <ls_attr>-key.

        WHEN 'GBT_ALCOHOL'.
          <ls_bat_detail>-zalcohol-content = <ls_attr>-valn_id-valfr.
          <ls_bat_detail>-zalcohol-unit   = <ls_attr>-valn_id-vunit.

        WHEN 'GBT_PRODUCTION_LINE'.
          <ls_bat_detail>-zproduction_line = <ls_attr>-valc_id.

        WHEN 'GBT_RESTRICTED_FOR_COUNTRY'.
          IF <ls_attr>-valc_id IS NOT INITIAL.
            APPEND <ls_attr>-valc_id TO <ls_bat_detail>-zrestricted_for_country.
          ENDIF.

        WHEN OTHERS.
      ENDCASE.
    ENDLOOP.
  ENDIF.

ENDIF.
ENDLOOP.

ENDIF.
ENDMETHOD.

```

## 14 Create URLs to access GBT-UI

To integrate GBT UIs in other applications, supporting their processes, an URL to start a GBT UI has to be used.

The general URL-schema to start GBT is defined as following:

**https://<host>:<port>/nwbc/&sap-client=<client>&sap-language=<language>&sap-theme=<theme>**

### Description of the URL-Parameters

- Parameter *sap-client*  
Client of the GBT system.
- Parameter *sap-language*  
Language key for the logon (e.g. EN, FR, DE).
- Parameter *sap-theme*  
Define the [theme](#) to be used (e.g. SAP\_CORBU, SAP\_BELIZE, SAP\_BELIZE\_HCB etc. ).

These parameters are available also for the following schemas.

The navigation to a dedicated GBT UI is based on OBN-Navigation targets (see transaction PFCG).

### 14.1 URL Schema to Display Batches

Access the GBT UI directly using an URL including a set of external batch keys.

The batches are selected based on the given keys in the URL parameter and are displayed either in the tree top-down, tree bottom-up or graphical view.

**https://<host>:<port>/nwbc/~canvas/obn/GBTBATSAVS.DISPLAY/?WDCONFIGURATIONID=%2FGBT%2FWDA\_NW\_OVP\_CFG&P\_DISPLAY\_AREA=<page\_id>&P\_BAT\_KEY=<batch\_key\_1>,<batch\_key\_2>,<batch\_key\_n>&sap-client=<client>&sap-language=<language>**

**Attention:** the number of Batch keys is limited by the string length of the URL.

### Description of the URL-Parameters

- Parameter *P\_DISPLAY\_AREA*  
<page\_id> has to be set to one of the following values:
  - TREE\_TD (Top-Down view as table)
  - TREE\_BU (Bottom-Up view as table)
  - GRAPHIC (Graphic view)
  - The page id of a customer page as defined in the component customizing for /GBT/WDC\_NW\_OVP\_CFG
- Parameter *P\_BAT\_KEY*  
<batch\_key\_x> must be filled with <material number>%23<batch number>%23<plant>%23<storage location>%23<logical system>.

Several batch keys can be passed in the parameter P\_BAT\_KEY separated by a comma (,).

For each of these batch keys the system executes a query with the key components as selection criteria.

An empty component in the key is interpreted as not specified (comparable to '\*').

The results of all single queries are collected to the overall result list.

## 14.2 URL Schema to Display a Worklist Items

Access the GBT Worklist UI directly using an URL.

**https://<host>:<port>/nwbc/~canvas/obn/GBTWRKLST.DISPLAY/?WDCONFIGURATIONID=/GBT/WDA\_NW\_OVP\_CFG&P\_DISPLAY\_AREA=WORKLIST&P\_WORKLIST\_ID=<worklist\_id>&sap-client=<client>&sap-language=<language>**

### Description of the URL-Parameters

- Parameter *P\_WORKLIST\_ID*  
<worklist\_id> has the Id of the Worklist.

## 14.3 URL Schema to prefill search fields for Batches or HUs

Access the GBT search UI with given search parameters.

See [note 2402146](#) for the necessary steps to call GBT with prefilled search criteria from URL parameters.

### 14.3.1 Rules to define Search Parameter Names

The names of the search parameters are built at runtime. Parameter belonging to the main object requested by the search are built with prefix "SAP" like SAP%BATNR or SAP%MATERIAL\_DESCR. Parameter belonging to other traceability object type e.g. Material Document have the [Object Type](#) as prefix e.g. MDI%PSTING\_DATE. Batch Characteristics have no prefix and the name is taken as it is (see table CABN field ATNAM).