



CUSTOMER

Security Guide

SAP ECTR for SAP S/4HANA 1.2

Contents

1	Document history	3
2	Introduction.....	4
2.1	Target Group.....	4
2.2	Why is Security Necessary?	4
2.2.1	About this Document	4
2.2.2	Overview of the Main Sections	4
3	Before you Start.....	5
4	Security aspects for data	7
5	Java implementations	10
6	Data protection	11
6.1	Handling of personal data.....	11
6.2	Blocking of personal data	11
6.3	Deleting of personal data	11

1 Document history

NOTE

Before you start the implementation, make sure you have the latest version of this document.

This guide is valid as of SAP ECTR for SAP S/4HANA 1.2.0.0

The latest version is available on SAP Help Portal

https://help.sap.com/docs/SAP_ENGINEERING_CONTROL_CENTER_S4HANA

Version	Date	Change
1.0	26.10.2023	Initial creation

2 Introduction

This guide does not replace the Administrator or Operations Guides that are available for production operation.

2.1 Target Group

- Technology consultants
- Security consultants
- System administrators

This document is not part of installation guides, configuration guides, technical manuals or upgrade guides. These guides are only relevant for a certain phase of the software life cycle. The security guide provides information for all phases of the life cycle.

2.2 Why is Security Necessary?

Security requirements increase with the increasing use of distributed systems and the internet for managing business data. In a distributed system, you have to be sure that your data and processes meet the requirements of your company. Furthermore, unauthorized persons must not be able to access to critical information. User errors, carelessness or attempts to manipulate the system must not result in a loss of data or processing time. These security requirements also apply to the SAP ECTR for SAP S/4HANA.

2.2.1 About this Document

The Security Guide provides an overview of security-relevant information for SAP ECTR for SAP S/4HANA.

2.2.2 Overview of the Main Sections

The Security Guide consists of the following main sections:

- Before you start
This section contains information about the reasons why security is necessary and how the document is used as well as references to other security guides that form the basis for this Security Guide. Relevant SAP Notes are also listed.
- Technical system landscape
This section provides an overview of the technical components and communication paths that SAP ECTR for SAP S/4HANA uses.
- Security aspects for data, in the flow of data and in processes
This section provides an overview of the security aspects of the most frequently used processes within SAP ECTR for SAP S/4HANA.

3 Before you Start

SAP ECTR for SAP S/4HANA is based on S/4HANA 2021. Hence the corresponding security guides also apply to SAP ECTR for SAP S/4HANA.

Underlying Security Guides

Security guide of the scenario, application or component	Internet address
SAP S/4HANA, On-Premise edition 1511	SAP Help Portal
SAP NetWeaver for SAP S/4HANA, On-Premise edition	SAP NetWeaver Security Guide

For a complete list of available SAP Security Guides, see <https://www.sap.com/corporate/en/company/security.html>.

Important SAP Notes

The following table shows the most important SAP notes regarding the security of SAP ECTR for SAP S/4HANA.

Title	SAP Note
SAPHTTP and SSL	506314
Access to Content Server via HTTPS	712330
Subsequent Introduction of the Security Level for Documents (URL Signature)	792366
CAD Services: DUPEC Problem and Additional Message	1904365
ACC Integration in CAD Desktop: Enhancement for new RFCs (EA-APPL)	1895895
ACC Integration in CAD Desktop: Enhancement for new RFCs (PLMWUI)	1893807
CDESK_SRV_GET_FILE_UPLOAD_URL: Check can be Deactivated	1957344
CAD Services: Hierarchy Explosion	1926438
Workflow: Unify Access to Configuration	1830685
WF Notify: User Decision with Automatic Notification Not Supported	1964571
CAD Services: Improvements to Troubleshooting	1982509
CDESK: CAD user group not set to default value if user does not belong to a user group for group maintenance in Customizing	2028915
Update capability of the KPRO DMS	810391
Update capability of the KPRO DMS	942227

Title	SAP Note
Modified report DMS_KPRO_CHECK1 for KPRO update	942228
DIR has Files with Several Active Content Versions	1302899

For a list of additional security-related SAP Hot News and SAP Notes, see also <https://support.sap.com/en/my-support/knowledge-base/security-notes-news.html>.

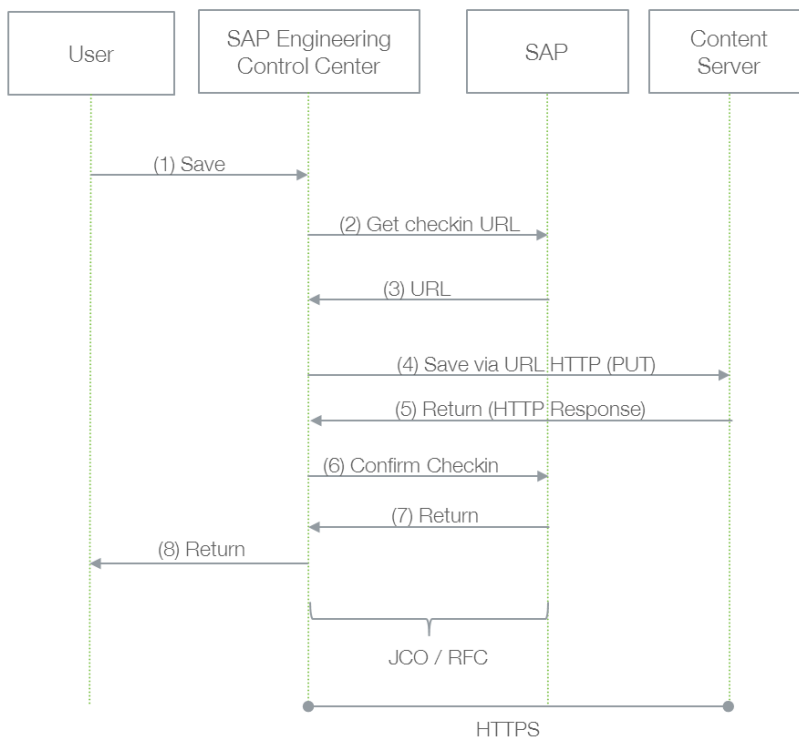
4 Security aspects for data

The following figure provides an overview of the following processes for SAP ECTR for SAP S/4HANA:

Save

- Take into editing mode
- Password processing
- Save

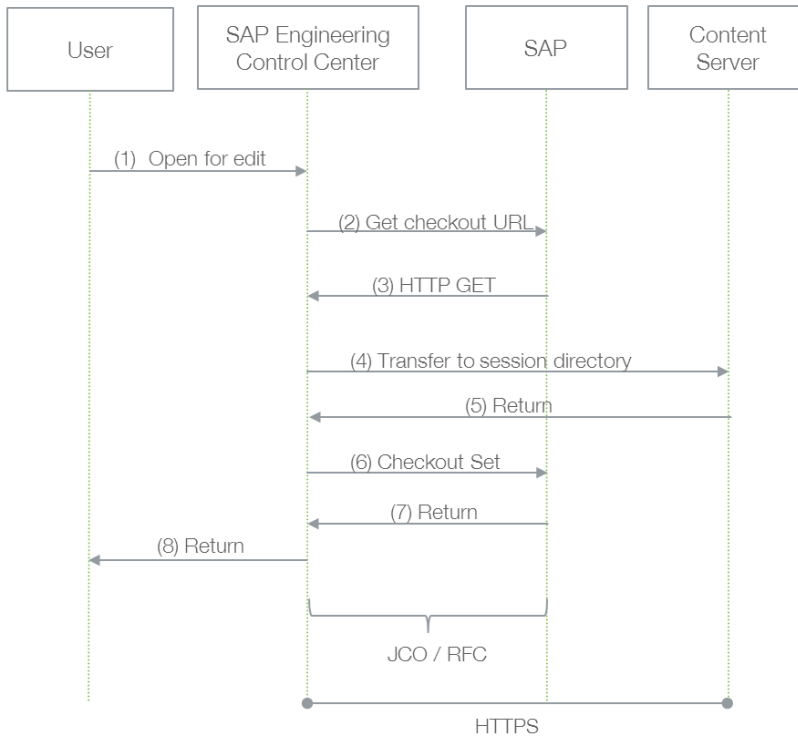
The following figure provides an overview of saving.



Step	Description	Security measure
1	The user stores a document in SAP ECTR for SAP S/4HANA.	Not relevant
2	The URL for the document is requested.	Not relevant
3	SAP returns the saving URL	RFC
4	Data transfer to the content server with URLs	Transfer protocol HTTPS
5	The content server sends an http-Response to SAP ECTR for SAP S/4HANA.	Transfer protocol HTTPS
6	The data transfer to the content server is confirmed in SAP.	RFC
7,8	Return to SAP ECTR for SAP S/4HANA.	RFC

Take into editing mode

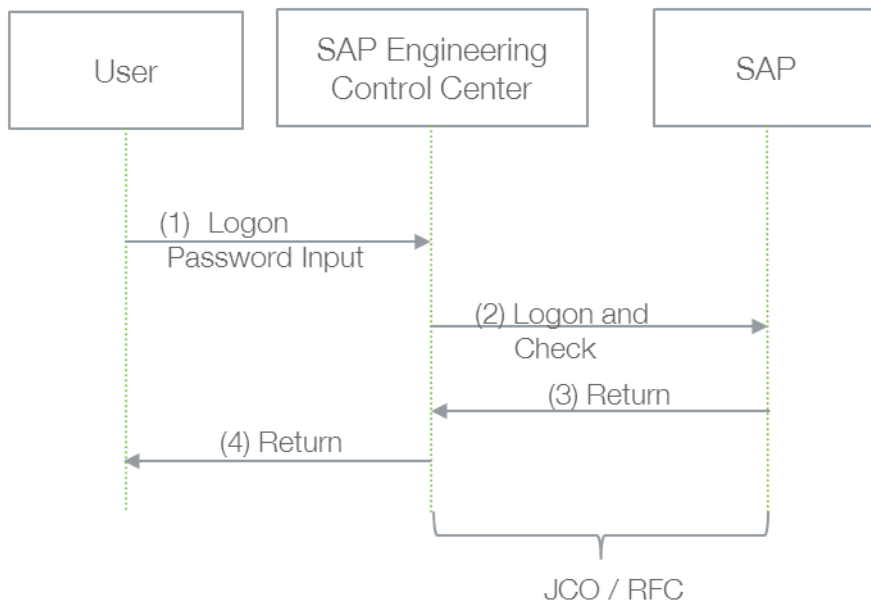
The following figure provides an overview of taking into editing mode.



Step	Description	Security measure
1	The user starts editing a document in SAP ECTR for SAP S/4HANAr.	Not relevant
2	The URL for the document is requested.	Not relevant
3	SAP returns the editing URL.	RFC
4	Data transfer to the content server with URLs.	Transfer protocol HTTPS
5	The content server sends an http-Response to SAP ECTR for SAP S/4HANA.	Transfer protocol HTTPS
6	The data transfer to the content server is confirmed in SAP.	RFC
7,8	Return to SAP ECTR for SAP S/4HANA.	RFC

Password processing

The following figure provides an overview of password processing.



Step	Description	Security measure
1	The user logs on with the user data.	The password is not displayed when entered
2	Transfer of logon data to SAP JCo and forward to the SAP system for checking.	SNC / RFC, passwords are encrypted
3	Feedback whether the logon was successful and the session object is for the currently valid session.	RFC
4	Feedback to user.	Not relevant

5 Java implementations

Several Java implementations exist. SAP ECTR for SAP S/4HANA is based on SAP JVM and SAP JVM is in turn based on Java SE 17. Java implementations other than those provided by SAP are not tested and therefore not supported.

SAP pays attention to security in its Java implementations. No browser add-ins are used. Only various .dll, .jar, and .exe files are saved on the hard disk. An installation does not take place. The mentioned files are only called with user rights at runtime.

6 Data protection

Data protection is associated with numerous legal requirements and data protection concerns. In addition to compliance with the general data protection laws, compliance with industry-specific legislation in various countries must be observed. This Guide describes how you can support compliance with legal regulations and data protection.

This section and all other sections in this Guide do not indicate whether these features and functions are the best way to support business, industry, regional, or country-specific requirements. In addition, this Guide does not provide advice or recommendations on additional features that would be required in an environment; data protection decisions must be made on a case-by-case basis and in compliance with the given system landscape and applicable regulatory requirements.

6.1 Handling of personal data

For information on how personal data is handled in SAP, please read the SAP note 2627073 and the chapter "Deleting Personal Data" in this Guide.

6.2 Blocking of personal data

It is not possible to block the output of personal data, such as the user name in log files.

6.3 Deleting of personal data

In SAP ECTR for SAP S/4HANA, personal data is backed up in various places.

To locate and delete the data, search for the following preference variables in the configuration files:

Variable	Configuration file
PLM_DATAROOT	%PLM_INSTDIR%\customize\config\plm_initialize.env
PLM_TEMPBASE PLM_COMMONDIR	%PLM_INSTDIR%\customize\config\plm_initialize.env %PLM_INSTDIR%\customize\config\plm_setenv.env
PLM_LOGDIR	%TEMP%\SAP\ECTR\%PLM_INSTID%\logs
PLM_DATAROOT	%PLM_INSTDIR%\customize\config\plm_initialize.env
PLM_TEMPBASE	%PLM_INSTDIR%\customize\config\plm_initialize.env
PLM_COMMONDIR	%PLM_INSTDIR%\customize\config\plm_setenv.env

Data can also be stored, depending on the customizing in the following files:

Variable	File name
%PLM_INSTDIR%\customize\config\ attributes-from-sap.xml	attributes-from-sap.xml
%PLM_INSTDIR%\customize\config\ attributes-to.sap.xml	attributes-to.sap.xml

In addition, personal data may be stored in the temporary Windows folder. To find them, please enter %TEMP% in your Windows Explorer.

Deleting this data has no effect on SAP ECTR for SAP S/4HANA operation. However, if the log files are deleted, SAP SE can no longer track errors.