



**PUBLIC**  
2020-04-20

# **Configuration Guide (DCM)**

# Content

- 1 Customizing. . . . . 3**
- 1.1 General Settings. . . . . 3
- 1.2 Business Object Deactivation and Activation. . . . . 4
- 1.3 Control of Business Object Dependencies. . . . . 4
  - Selection Screen. . . . . 5
  - Business Object Configuration. . . . . 6
- 1.4 Configuration of Versioning. . . . . 10
  
- 2 Technical Information. . . . . 13**
- 2.1 Deactivation and Activation of Additional Functions. . . . . 13
  - Technical Analytics Tools. . . . . 13
- 2.2 Authorizations. . . . . 15
  - DCM Business Object. . . . . 16
  - DCM Rule. . . . . 16
  - DCM Routine. . . . . 16
  - DCM Inspection Result. . . . . 16
- 2.3 User Parameters. . . . . 16
- 2.4 Enhancement Options. . . . . 17
  - Business Add-Ins (BADIs). . . . . 17

# 1 Customizing

The sections described in this chapter cover all major Customizing configurations of the **DCM**.

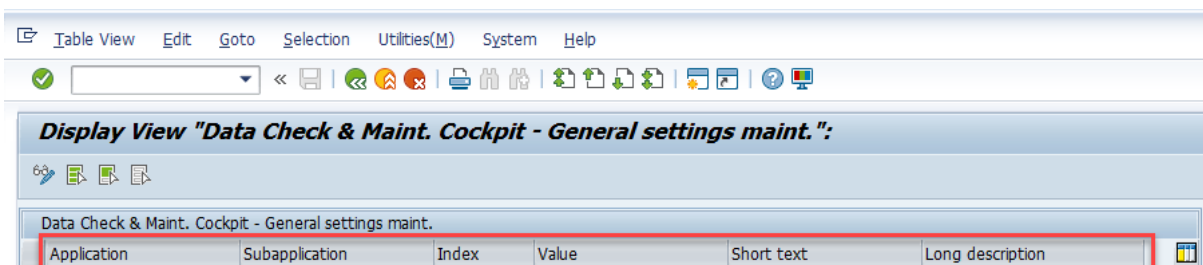
## 1.1 General Settings

General settings are used to list general parameters for various functions of **DCM**.

The general settings are located in Customizing for the consulting solution **data check & maintenance cockpit (DCM)** in the transaction *SPRO*, under ► *SAP Customizing Implementation Guide* ► *Logistics - General* ► *SCM Consulting Solutions* ► *Data Check & Maintenance Cockpit (DCM)* ► *General DCM Settings* ► *General DCM Settings Maintenance* ►, or in transaction */SAPLOM/DCM\_GS*.

### i Note

Please note that when executing **SCM consulting solutions**, you must enter the prefix */n/SAPLOM/* before each transaction (here: */n/SAPLOM/DCM\_GS*).



General DCM Settings

Fields of Parameter Table in General Settings

Field	Description
Application	Main category for which the parameter is valid
Subapplication	Parameter ID
Index	Used to set multiple values for a parameter; if only one unique parameter value is used in the program, the value with the lowest index is passed to the program
Value	Parameter value
Short Text	Short text of parameter
Long Description	Description of parameter

### → Recommendation

Only parameter values can be changed after consultation with the SAP consulting team. The number and the remaining fields of the parameters are predefined and can vary between the **DCM** versions.

## 1.2 Business Object Deactivation and Activation

In the current version of the **DCM**, business objects can only be activated or deactivated by the SAP consulting team. The number of business objects is also continuously supplemented by this team, which enhances existing business objects and links them to each other according to the standard SAP logic. The number and configuration of the business objects that is currently installed, corresponding to the **DCM** version, can be viewed transparently by means of the Customizing functions in the control of the business object dependencies for selected experts.

### Related Information

[Control of Business Object Dependencies \[page 4\]](#)

## 1.3 Control of Business Object Dependencies

In the previous version of the **DCM**, analysis objects whose technical definition and database table links were stored in the source code and therefore not transparent for SAP users were stored in the previous version.

The application for controlling the business object dependencies is primarily intended to create transparency for a better understanding of how data is analyzed and to make it easier for the data analyst to trace the results of the inspection.

The control of the business object dependencies are located in Customizing for the consulting solution **data check & maintenance cockpit (DCM)** in the transaction *SPRO*, under [▶ SAP Customizing Implementation Guide ▶ Logistics - General ▶ SCM Consulting Solutions ▶ Data Check & Maintenance Cockpit \(DCM\) ▶ Control of DCM Business Object Dependencies ▶](#), or in transaction */SAPL0M/DCM\_BO\_DEP*.

### i Note

Please note that when executing **SCM consulting solutions**, you must enter the prefix */n/SAPL0M/* before each transaction (here: */n/SAPL0M/DCM\_BO\_DEP*).

The following control options are available and define a business object in **DCM**:

- **Business Object Basic Configuration:** Defines the reference of the business object to a database table field

- **Table Dependencies:** Links the database table of the basic configuration with other database tables or views that can be assigned to the relevant business object in accordance with the standard SAP process logic.
- **Selection Screen Configuration:** Configuration of the available database table fields in the selection restriction of the **DCM** cockpit
- **Result Screen Configuration:** Configuration of the generally displayed database table fields that can be evaluated in the output of the inspection result of the **DCM** cockpit
- **Dependencies with Other Business Objects:** Technical links between the business objects to be able to perform data analyses across business objects

### → Recommendation

Changes to the business object dependencies can only be made by the SAP consulting team and will vary between the **DCM** versions due to ongoing enhancements in this area; change requests are therefore to be addressed to the SAP consulting team. It cannot be ruled out that the control of the business object dependencies for a selected target group of users (see User Parameters) may be enhanced in future **DCM** versions.

## Related Information

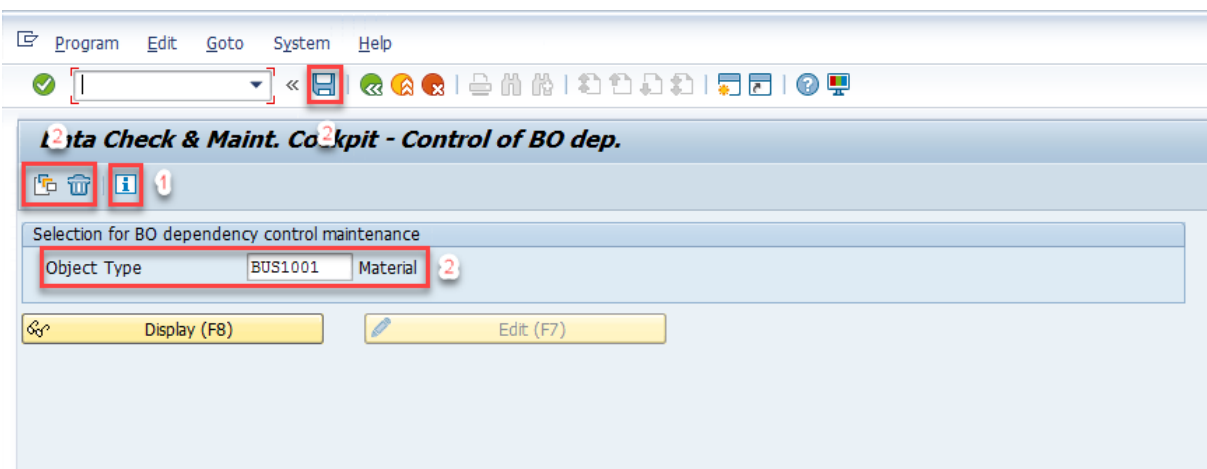
[Selection Restriction Tab Page](#)

[Output of Inspection Result](#)

[User Parameters \[page 16\]](#)

## 1.3.1 Selection Screen

On the selection screen for controlling the business object dependencies, the system uses the F4 search help to select the business object whose configurations are to be displayed in a further sequence.

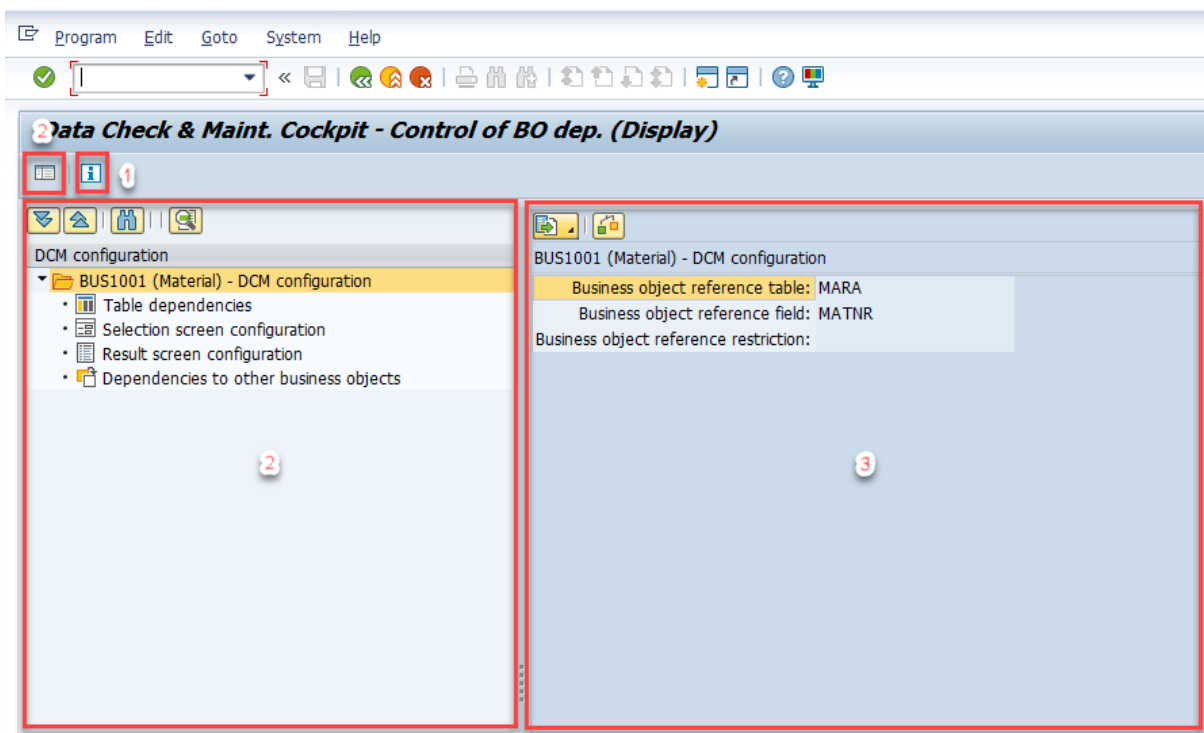


Selection Screen

1. **Product Information:** Information on the current **DCM** version
2. **Report Variant:** Save/manage/delete report variants on the selection screen
3. **Business Object:** Selection of business object for controlling the business object dependencies

## 1.3.2 Business Object Configuration

The configuration of the business object is divided into a navigation area and a detail area.

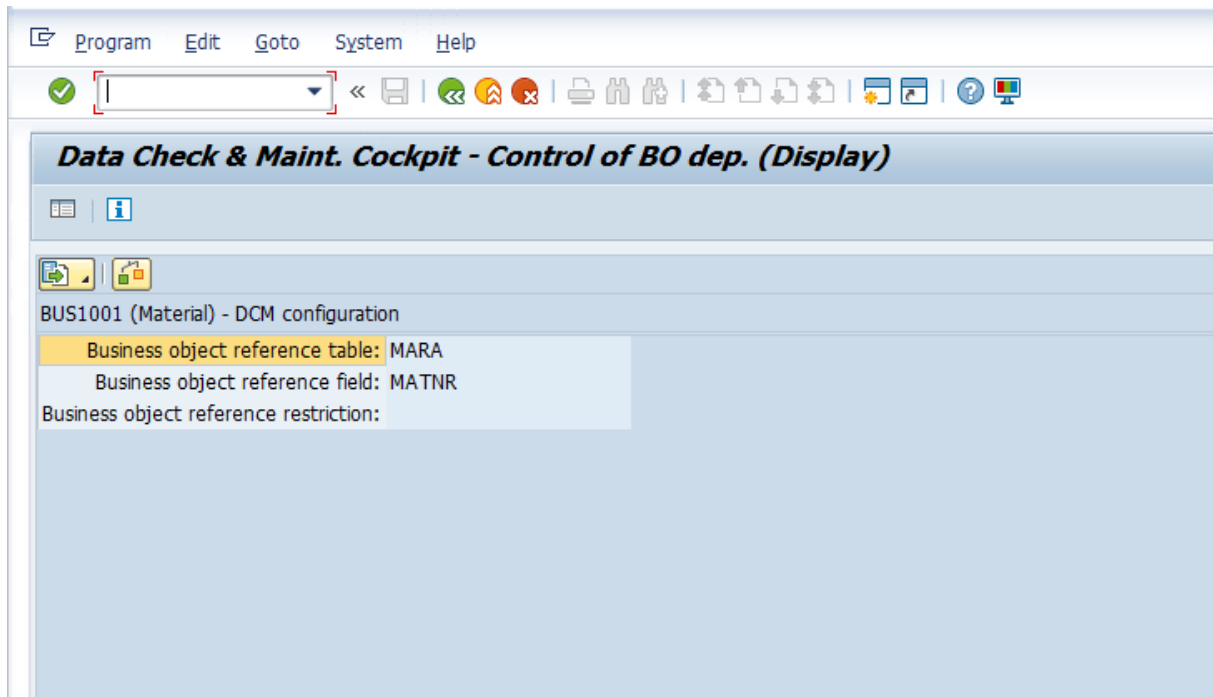


Basic Structure of the Configuration of the Business Object

1. **Product Information:** Information on the current **DCM** version
2. **Navigation Area:** This area can be displayed or hidden
3. **Detail Area:** Displays the configuration step selected in the navigation area

### 1.3.2.1 Business Object Basic Configuration

The business object reference is defined in a database table field in the basic configuration of the business object.



Basic Configuration of Business Object

If the reference field business object is also assigned to another business object, the reference must be further restricted to differentiate between the business objects and to be able to assign the dataset within the reference table to exactly one business object.

## 1.3.2.2 Table Dependencies

The configuration of the table dependencies of a business object links the database table of the basic configuration with other database tables or views that can be assigned to the relevant business object in accordance with the standard SAP process logic.

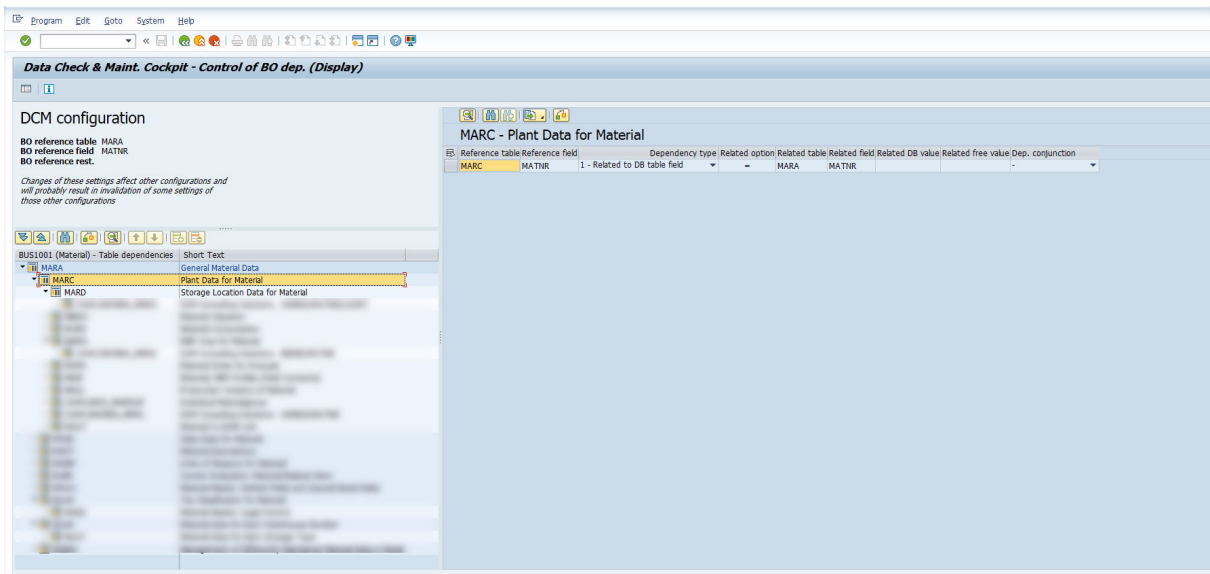


Table Relationships Within the Business Object

On the left side of the detail area, an overview of all database tables or views that make up the relevant business object is displayed.

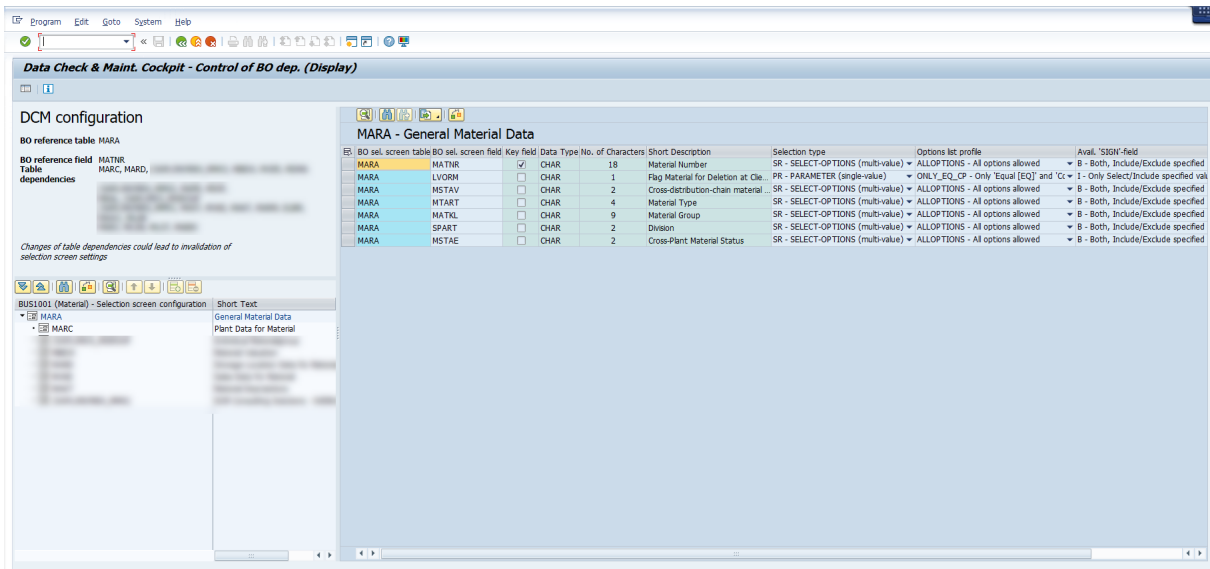
On the right side of the detail area, the dependencies at the level of the database table fields are specified according to the standard SAP process logic.

### 1.3.2.3 Selection Screen Configuration

The configuration of the selection screen of a business object defines the available DB table fields in the selection restriction of the **DCM** cockpit.

#### Configuration of the Selection Screen





Configuration of the Selection Screen

On the left side of the detail area, the system lists those database tables or views from the configuration of the table dependencies that are available in the selection restriction of the relevant business object.

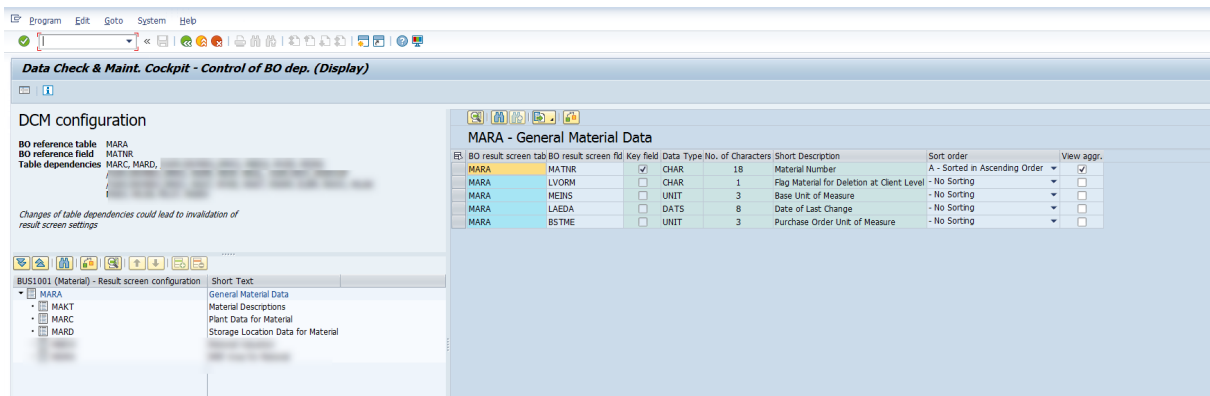
On the right side of the detail area, the respective DB table fields and their selection options are specified.

## Related Information

[Selection Restriction Tab Page](#)

### 1.3.2.4 Configuration Result Screen

The configuration of the results screen of a business object defines the database table fields that are displayed and can be evaluated in the output of the inspection result of the **DCM** cockpit.



(Basic) Configuration of the Result Screen

On the left side of the detail area, the database tables or views from the configuration of the table dependencies that are displayed in the output of the inspection result of the relevant business object are listed.

On the right side of the detail area, the corresponding DB table fields are specified, which must always be displayed when the business object is evaluated, and their sort sequence and aggregation option. If the aggregation option is enabled, the field can be evaluated in the area of the KPI aggregations of the inspection result.

In addition to the database table fields that appear in the configuration of the results screen, the system displays the fields in the inspection results output that a checked **DCM** rule accesses. This ensures that checks are analyzed and displayed transparently.

## Related Information

[Output of Inspection Result](#)  
[KPI Aggregations Area](#)

### 1.3.2.5 Dependencies with Other Business Objects

The configuration of dependencies with other business objects links a database table or view of the business object in accordance with the standard SAP process logic with database tables or views of other business objects to be able to perform data analyses across business objects.

The screenshot shows the SAP Data Check & Maint. Cockpit interface. The main content area displays a table titled "Dependencies to other business objects". The table has the following columns: Reference BO, Reference table, Reference field, Data Type, No. of Characters, Short Description, Dependency type, Related option, Related table, Related field, Data Type, No. of Characters, Short Description, Related DB value, Related free value, and Dep. conjunction.

Reference BO	Reference table	Reference field	Data Type	No. of Characters	Short Description	Dependency type	Related option	Related table	Related field	Data Type	No. of Characters	Short Description	Related DB value	Related free value	Dep. conjunction
BUS1002	STKO	STLNR	CHAR	8	Bill of material	1 - Related to DB table field	-	MAST	STLNR	CHAR	8	Bill of material			AND - AND operator
BUS1002	STKO	STLAL	CHAR	2	Alternative BOM	1 - Related to DB table field	-	MAST	STLAL	CHAR	2	Alternative BOM			-

Links Between Business Objects

## 1.4 Configuration of Versioning

The versioning of **DCM** rules/routines can be activated or deactivated using the general **DCM** settings.

**Display View "Data Check & Maint. Cockpit - General settings maint.":**

Application	Subapplication	Index	Value	Short text	Long description
PROGRAM Program	ACTIVATE_VERSIONING	0	X	Activation of DCM Rule/Routine versioning	If this field is not empty, versioni...

General Settings for Versioning/Activation by Setting the Value 'X'

The details on configuring the versioning for the **DCM** are located in Customizing for the consulting solution **data check & maintenance cockpit (DCM)** in the transaction *SPRO*, under **SAP Customizing Implementation Guide > Logistics - General > SCM Consulting Solutions > Data Check & Maintenance Cockpit (DCM) > General DCM Settings > DCM Versioning Settings Maintenance**, or in transaction `/SAPLOM/DCM_VERS`.

**i Note**

Please note that when executing **SCM consulting solutions**, you must enter the prefix `/n/SAPLOM/` before each transaction (here: `/n/SAPLOM/DCM_VERS`).

In Customizing for the versioning settings, all database table fields of the **DCM** rules/routines are listed that are responsible for creating a new version once the versioning has been activated.

**Display View "Data Check & Maint. Cockpit - Versioning settings maint.":**

Versioning category	Versioning DB table	Versioning DB table field	Versioning activation
ROUT DCM Routine	/SAPLOM/DCM_ROU	ELEM_ROUTINE_OBJTYPE	A Trigger versioning
ROUT DCM Routine	/SAPLOM/DCM_ROU	ELEM_RULE_ID	A Trigger versioning
ROUT DCM Routine	/SAPLOM/DCM_ROU	ELEM_RULE_OBJTYPE	A Trigger versioning
ROUT DCM Routine	/SAPLOM/DCM_ROU	ELEM_TYPE	A Trigger versioning
ROUT DCM Routine	/SAPLOM/DCM_ROU	MANDT	N DO NOT CHANGE - Trigger not possible
ROUT DCM Routine	/SAPLOM/DCM_ROU	OBJTYPE	N DO NOT CHANGE - Trigger not possible
ROUT DCM Routine	/SAPLOM/DCM_ROU	ROUTINE_ID	N DO NOT CHANGE - Trigger not possible
ROUT DCM Routine	/SAPLOM/DCM_ROU	VERSION_ROUTINE	N DO NOT CHANGE - Trigger not possible
RULE DCM Rule	/SAPLOM/DCM_RUL	ACTIVE	Not relevant for versioning
RULE DCM Rule	/SAPLOM/DCM_RUL	MANDT	N DO NOT CHANGE - Trigger not possible
RULE DCM Rule	/SAPLOM/DCM_RUL	MASTERLANG	Not relevant for versioning
RULE DCM Rule	/SAPLOM/DCM_RUL	OBJTYPE	N DO NOT CHANGE - Trigger not possible
RULE DCM Rule	/SAPLOM/DCM_RUL	REF_FIELD	A Trigger versioning
RULE DCM Rule	/SAPLOM/DCM_RUL	REF_FIELD_SF	A Trigger versioning

Details on Configuration of Versioning

### → Recommendation

The entries are always maintained by the SAP consulting team and can vary between the **DCM** versions. It is recommended that you only change the version activation for individual database table fields after consulting the SAP consulting team.

## Related Information

[General Settings \[page 3\]](#)

## 2 Technical Information

The sections described in this chapter cover all the technical information about the use of the **DCM**, which is not explained in Customizing for **DCM**.

### 2.1 Deactivation and Activation of Additional Functions

You can also activate or deactivate the functions listed in this section after installing the **DCM**.

#### 2.1.1 Technical Analytics Tools

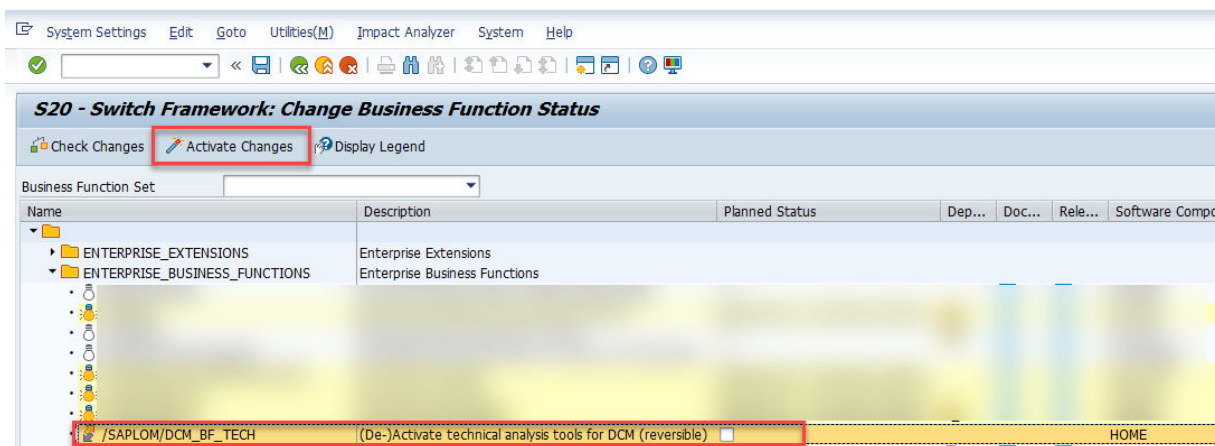
The technical analytics tools help to increase the transparency of calculations and actions in the **DCM** from a technical perspective and to find application errors more quickly.

##### → Recommendation

This function should only be activated if expressly recommended by the SAP consulting team.

##### 2.1.1.1 Activating the Function

The business function `/SAPL0M/DCM_BF_TECH` for the technical analytics tools of the **DCM** is activated and deactivated in standard SAP Customizing for business functions, using transaction [SFW5](#). This functionality is delivered inactive and needs to be configured by an administrator with corresponding authorizations where necessary.



Business Function for Technical Analytics Tools of the DCM

## 2.1.1.2 Use of Function

The business function for the technical analytics tools activates the switches of the Switch Framework listed in the following table.

Switch Framework Switches Linked to Business Function

Switch	Description
/SAPLOM/DCM_SW_ASSERT_STACK	Additional reading of the ABAP/system call stack for ASSERT logs; this can lead to a deterioration in system performance

To obtain detailed information about data processing in the **DCM** applications during debugging, the source code contains ASSERT commands certain places, which can be activated using checkpoint groups. The following table lists all the checkpoint groups that are available in the **DCM**.

Checkpoint Groups for Technical Analytics in the DCM

Checkpoint Group	Description
/SAPLOM/DCM_SQL_NATIVE	Native SQL generation and processing in the <b>DCM</b>
/SAPLOM/DCM_TRANS_CALL	Jump to transactions
/SAPLOM/DCM_WI_ADHOC_OBJ	Display and processing of a <b>DCM</b> work item
/SAPLOM/DCM_WORKITEM	Creation of a <b>DCM</b> work item

### i Note

Checkpoint groups can be activated on the initial screen of transaction **SAAB** by choosing the activation function, or in the ABAP Debugger.

### → Recommendation

It is only recommended to activate logging of assertions in the checkpoint group for the executing user. The ASSERT log generated during processing can then be made available to the SAP consulting team for further analysis.

## Related Information

[Checkpoint Groups](#)  
[ASSERT Commands](#)

## 2.2 Authorizations

In general, the **DCM** provides authorizations at transactional level.

The transactions in the table below are part of the **DCM** menu (transaction code [/SAPLOM/DCM\\_MENU](#)) and must be taken into account when assigning user authorizations in the SAP system.

List of All Transactions in the DCM

Transaction Code	Type	Description
<a href="#">/SAPLOM/DCM_HELP</a>	Application	SAP Help Portal <b>data check &amp; maintenance cockpit</b> home page
<a href="#">/SAPLOM/DCM</a>	Application	<b>DCM</b> - selection & check
<a href="#">/SAPLOM/DCM_R</a>	Application	<b>DCM</b> - rules & routines
<a href="#">/SAPLOM/DCM_IMP_EXP</a>	Administration	<b>DCM</b> import/export; <u>not activated in current <b>DCM</b> version</u>
<a href="#">/SAPLOM/DCM_LOCK</a>	Administration	View of unconditional program locks in the <b>DCM</b> ; these unconditional program locks are used in addition to the standard SAP locks (see transaction <a href="#">SM12</a> ) in certain cases.
<a href="#">/SAPLOM/DCM_GS</a>	Configuration	Maintenance of the general <b>DCM</b> settings
<a href="#">/SAPLOM/DCM_BO_DEP</a>	Configuration	Control of the <b>DCM</b> business object dependencies; in current <b>DCM</b> version only visible for selected experts (see Control of Business Object Dependencies)
<a href="#">/SAPLOM/DCM_VERS</a>	Configuration	Maintenance of <b>DCM</b> versioning settings

### i Note

Please note that when executing **SCM consulting solutions**, you must enter the prefix [/n/SAPLOM/](#) before each transaction.

## Related Information

[Control of Business Object Dependencies \[page 4\]](#)

### 2.2.1 DCM Business Object

Currently, no special authorization concept is provided for **DCM** business objects.

### 2.2.2 DCM Rule

Currently, no special authorization concept is provided for **DCM** rules.

### 2.2.3 DCM Routine

Currently, no special authorization concept is provided for **DCM** routines.

### 2.2.4 DCM Inspection Result

Currently, no special authorization concept is provided for **DCM** inspection results.

## 2.3 User Parameters

The parameter IDs listed in the following table are available to users of the **DCM**. A user parameter is usually assigned to an SAP user using transactions *SU01* or *SU3*.

User Parameters for DCM

Parameter ID	Description
/SAPL0M/DCM_EXPERT	For a special user group (for example, data analysts); releases the expert mode of the <b>DCM</b>
OBJ	Default business object that is set when a <b>DCM</b> application is first called after logging on to the SAP system.



## 2.4 Enhancement Options

The enhancement options described in this section are offered in addition to the standard SAP options of the Enhancement Framework for the **DCM**.

### Related Information

[Enhancement Framework](#)

### 2.4.1 Business Add-Ins (BAdIs)

The following table lists all the BAdIs that are available in the **DCM**.

Business Add-Ins (BAdIs) in the DCM

Business Add-In	Description
/SAPL0M/DCM_BADI_MASS_CHANGE	<b>DCM</b> Mass change of data; this BAdI is used to implement specific procedures for data changes that can be used in mass change functions (see data processing and correction) of the <b>DCM</b>

The list of the available BAdIs, including the BAdI implementations available in your SAP system, is located in Customizing for the consulting solution **data check & maintenance cockpit (DCM)** in the transaction *SPRO*, under [▶ SAP Customizing Implementation Guide ▶ Logistics - General ▶ SCM Consulting Solutions ▶ Enhancement Options for the SCM Consulting Solutions ▶ Enhancement Options for DCM ▶](#).

#### → Recommendation

For more information about the interface and the use of the BAdIs, as well as an example implementation, see the relevant BAdI documentation in the SAP system.

### Related Information



[Data Processing and Correction As Response](#)

# Important Disclaimers and Legal Information

## Hyperlinks

Some links are classified by an icon and/or a mouseover text. These links provide additional information.

About the icons:

- Links with the icon : You are entering a Web site that is not hosted by SAP. By using such links, you agree (unless expressly stated otherwise in your agreements with SAP) to this:
  - The content of the linked-to site is not SAP documentation. You may not infer any product claims against SAP based on this information.
  - SAP does not agree or disagree with the content on the linked-to site, nor does SAP warrant the availability and correctness. SAP shall not be liable for any damages caused by the use of such content unless damages have been caused by SAP's gross negligence or willful misconduct.
- Links with the icon : You are leaving the documentation for that particular SAP product or service and are entering a SAP-hosted Web site. By using such links, you agree that (unless expressly stated otherwise in your agreements with SAP) you may not infer any product claims against SAP based on this information.

## Beta and Other Experimental Features

Experimental features are not part of the officially delivered scope that SAP guarantees for future releases. This means that experimental features may be changed by SAP at any time for any reason without notice. Experimental features are not for productive use. You may not demonstrate, test, examine, evaluate or otherwise use the experimental features in a live operating environment or with data that has not been sufficiently backed up.

The purpose of experimental features is to get feedback early on, allowing customers and partners to influence the future product accordingly. By providing your feedback (e.g. in the SAP Community), you accept that intellectual property rights of the contributions or derivative works shall remain the exclusive property of SAP.

## Example Code

Any software coding and/or code snippets are examples. They are not for productive use. The example code is only intended to better explain and visualize the syntax and phrasing rules. SAP does not warrant the correctness and completeness of the example code. SAP shall not be liable for errors or damages caused by the use of example code unless damages have been caused by SAP's gross negligence or willful misconduct.

## Gender-Related Language

We try not to use gender-specific word forms and formulations. As appropriate for context and readability, SAP may use masculine word forms to refer to all genders.

## Videos Hosted on External Platforms

Some videos may point to third-party video hosting platforms. SAP cannot guarantee the future availability of videos stored on these platforms. Furthermore, any advertisements or other content hosted on these platforms (for example, suggested videos or by navigating to other videos hosted on the same site), are not within the control or responsibility of SAP.



© 2020 SAP SE or an SAP affiliate company. All rights reserved.

No part of this publication may be reproduced or transmitted in any form or for any purpose without the express permission of SAP SE or an SAP affiliate company. The information contained herein may be changed without prior notice.

Some software products marketed by SAP SE and its distributors contain proprietary software components of other software vendors. National product specifications may vary.

These materials are provided by SAP SE or an SAP affiliate company for informational purposes only, without representation or warranty of any kind, and SAP or its affiliated companies shall not be liable for errors or omissions with respect to the materials. The only warranties for SAP or SAP affiliate company products and services are those that are set forth in the express warranty statements accompanying such products and services, if any. Nothing herein should be construed as constituting an additional warranty.

SAP and other SAP products and services mentioned herein as well as their respective logos are trademarks or registered trademarks of SAP SE (or an SAP affiliate company) in Germany and other countries. All other product and service names mentioned are the trademarks of their respective companies.

Please see <https://www.sap.com/about/legal/trademark.html> for additional trademark information and notices.