



Nevada Division of Natural Heritage

Department of Conservation and Natural Resources
901 S. Stewart Street, Suite 5002, Carson City, Nevada 89701-5245
voice: (775) 684-2900 | fax: (775) 684-2909 | web: heritage.nv.gov

At-Risk Plant and Animal Tracking List January 2023

The Nevada Division of Natural Heritage (NDNH) systematically curates information on Nevada's endangered, threatened, sensitive, rare, and at-risk plants and animals providing the most comprehensive source of information on Nevada's imperiled biodiversity.

Nevada's health and economic well-being depend upon its biodiversity and wise land stewardship. This challenge increases as population and land-use pressures continue to grow. Nevada is among the top 10 states for both the diversity and the vulnerability of its living heritage. With early planning and responsible development, economic growth and our biological resources can coexist. NDNH is a central source for information critical to achieving this balance. Management priorities for the state's imperiled biodiversity are continually assessed, providing opportunities to prevent population losses or elevations to endangered or threatened legal status through conservation actions.

A multi-disciplinary team of scientists and data management specialists assimilates information from diverse sources including field surveys, museum collections, resource management agencies, published and unpublished reports, online data portals, and knowledgeable individuals. This comprehensive inventory is maintained in a sophisticated database of spatial and tabular data, and is continually updated, refined, and subjected to quality controls.

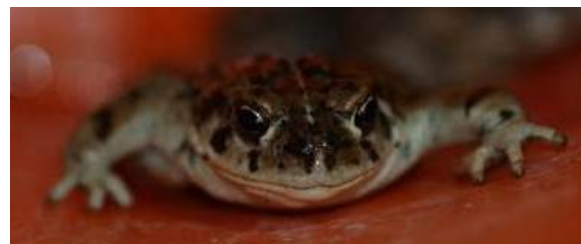
The attached At-Risk Plant and Animal Tracking List directs NDNH's data acquisition priorities and provides current information on the status of these taxa. Taxa considered at-risk and actively inventoried by NDNH typically include those with federal or other Nevada agency status, and those with global and/or state ranks 1-3, indicating some level of imperilment.

A separate list, the Plant and Animal Watch List, contains taxa that could become at-risk in the future.

Taxa on the At-Risk Plant and Animal Tracking List are organized by taxonomic group, and presented alphabetically by scientific name within each group. Currently, there are 650 Tracking List taxa: 290 plants, 215 invertebrates, 65 fishes, 9 amphibians, 7 reptiles, 27 birds, and 37 mammals.

Documentation of population status, locations, or other updates or corrections for any of the taxa on this list are always welcome. Literature citations with taxonomic revisions and descriptions of new taxa are also appreciated. The Nevada Native Species Site Survey Report form is available on our website under the Submit Data tab and is the preferred format for submitting information to NDNH.

This list is created and published periodically as a quick and easy reference; however, the most up-to-date species information, including the ability to create custom checklists, can be found on our website at <http://heritage.nv.gov/species/>. Other lists on the website include the Plant and Animal Watch List, Nevada Losses List, Nevada Endemic List, and more (<http://heritage.nv.gov/species/lists.php>).



Amargosa Toad (*Anaxyrus nelsoni*)
Photo by Eric Miskow

Nevada Division of Natural Heritage - At-Risk Plant and Animal Tracking List

Scientific Name Common Name G Rank S Rank USESA BLM USFS State Endemic CCVI

Non-Vascular Plants

Lichens

<i>Circinaria rogeri</i>	rim lichen	G2G3	S1						
<i>Dermatocarpon luridum</i>	silverskin lichen	G5	S1		S				
<i>Solorina spongiosa</i>	fringed chocolate chip lichen	G4G5	S1						

Bryophytes

<i>Bruchia bolanderi</i>	Bolander candlemoss	G3	S1			R5S			
<i>Crossidium seriatum</i>	rough fringemoss	G2G4	S2						
<i>Didymodon nevadensis</i>	Gold Butte moss	G4	S2		S				
<i>Entosthodon planoconvexus</i>	planoconvex cordmoss	G3	S1						
<i>Grimmia americana</i>	American dry rock moss	G1	S1						
<i>Meesia triquetra</i>	threerank humpmoss	G5	S1			R4S			
<i>Orthotrichum praemorsum</i>	bitten bristle moss	G2	S1						
<i>Orthotrichum spjutii</i>	Spjut bristle moss	G1G2	S1			R4S			
<i>Pseudocrossidium crinitum</i>	bearded screwmoss	G4G5	S1						
<i>Trichostomum sweetii</i>	Sweet moustache moss	G2?	S1						

Vascular Plants

Ferns and Clubmosses

<i>Botrychium ascendens</i>	upswept moonwort	G4	S1			R4S, R5S			
<i>Botrychium crenulatum</i>	dainty moonwort	G4	S2		S	R4S, R5S			
<i>Botrychium tunux</i>	moosewort	G3G4	S1			R4S, R5S			
<i>Selaginella utahensis</i>	Utah spikemoss	G2G3Q	SH						

Gymnosperms

<i>Pinus albicaulis</i>	whitebark pine	G3G4	S3	LT	S	R5S			
<i>Pinus ponderosa</i> ssp. <i>washoensis</i>	Washoe pine	G3Q	S2		S		CY		

Dicots

<i>Angelica scabrida</i>	rough angelica	G1G2	S2		S	R4S		Y	
<i>Antennaria arcuata</i>	meadow pussytoes	G3	S1		S	R4S			
<i>Antennaria soliceps</i>	Charleston pussytoes	G1	S1			R4S		Y	
<i>Anulocaulis leiosolenus</i> var. <i>leiosolenus</i>	sticky ringstem	G4T3T4	S2		S				
<i>Arabis rigidissima</i> var. <i>demota</i>	Galena Creek rockcress	G3T3Q	S2			R4S, R5S			
<i>Arctomecon californica</i>	Las Vegas bearpoppy	G3	S3		S		CE		
<i>Arctomecon merriamii</i>	white bearpoppy	G3	S3		S				
<i>Asclepias eastwoodiana</i>	Eastwood milkweed	G2	S2S3		S	R4S		Y	IL
<i>Astragalus ackermanii</i>	Ackerman milkvetch	G2	S2					Y	
<i>Astragalus aequalis</i>	Clokey milkvetch	G2	S2			R4S		Y	

Nevada Division of Natural Heritage - At-Risk Plant and Animal Tracking List

Scientific Name	Common Name	G Rank	S Rank	USESA	BLM	USFS	State	Endemic	CCVI
<i>Astragalus amphioxys</i> var. <i>musimonum</i>	Sheep Range milkvetch	G5T2	S2						
<i>Astragalus anserinus</i>	Goose Creek milkvetch	G2?	S2		S				EV
<i>Astragalus austiniae</i>	Austin milkvetch	G2G3	S1						
<i>Astragalus beatleyae</i>	Beatley milkvetch	G2	S2					Y	
<i>Astragalus calycosus</i> var. <i>monophyllidius</i>	one-leaflet Torrey milkvetch	G5T2Q	S3		S				
<i>Astragalus cimae</i> var. <i>cimae</i>	Cima milkvetch	G3T3	S1		S				
<i>Astragalus convallarius</i> var. <i>margaretiae</i>	Margaret's Rushy milkvetch	G5T2	S2		S			Y	
<i>Astragalus diversifolius</i>	meadow milkvetch	G2	S1						
<i>Astragalus ensiformis</i> var. <i>gracilior</i>	Veyo milkvetch	G3T1T2Q	S1		S				
<i>Astragalus eurylobus</i>	Needle Mountains milkvetch	G2	S2		S				PS
<i>Astragalus funereus</i>	black woollypod	G2	S2		S				
<i>Astragalus geyeri</i> var. <i>triquetrus</i>	threecorner milkvetch	G4T2T3	S2S3		S		CE		
<i>Astragalus gilmanii</i>	Gilman milkvetch	G2	S1		S				
<i>Astragalus hornii</i> var. <i>hornii</i>	Horn milkvetch	GUT1	SH		C				
<i>Astragalus inyoensis</i>	Inyo milkvetch	G3	S1						
<i>Astragalus johannis-howellii</i>	Long Valley milkvetch	G2	S2		S	R4S, R5S			PS
<i>Astragalus lemmonii</i>	Lemmon milkvetch	G2	S1		C	R5S			
<i>Astragalus lentiginosus</i> var. <i>kernensis</i>	Kern Plateau milkvetch	G5T2	S1			R5S			
<i>Astragalus lentiginosus</i> var. <i>latus</i>	broad-pod freckled milkvetch	G5T2	S2			R4S		Y	
<i>Astragalus lentiginosus</i> var. <i>sesquimetralis</i>	Sodaville milkvetch	G5T1	S1		S		CE		
<i>Astragalus lentiginosus</i> var. <i>stramineus</i>	straw milkvetch	G5T2T3	S1		S				
<i>Astragalus mohavensis</i> var. <i>hemigyris</i>	halfring milkvetch	G3G4T2T3	S3		S			Y	
<i>Astragalus mokiacensis</i>	Mokiak milkvetch	G3G4Q	S1S2		S				
<i>Astragalus nyensis</i>	Nye milkvetch	G3	S3		C				
<i>Astragalus oophorus</i> var. <i>clokeyanus</i>	Clokey eggvetch	G4T2	S2			R4S		Y	
<i>Astragalus oophorus</i> var. <i>lavinii</i>	Lavin eggvetch	G4T2	S2		S	R4S			
<i>Astragalus oophorus</i> var. <i>lonchocalyx</i>	long-calyx eggvetch	G4T3	S2		S				
<i>Astragalus phoenix</i>	Ash Meadows milkvetch	G2	S1	LT	S		CE	Y	
<i>Astragalus preussii</i> var. <i>laxiflorus</i>	Littlefield milkvetch	G4T2	S1S2						

Nevada Division of Natural Heritage - At-Risk Plant and Animal Tracking List

Scientific Name	Common Name	G Rank	S Rank	UESA	BLM	USFS	State	Endemic	CCVI
<i>Astragalus pseudodanthus</i>	Tonopah milkvetch	G3Q	S2		S				PS
<i>Astragalus pulsiferae</i> var. <i>coronensis</i>	Rams Horn Spring milkvetch	G4T3	S1						
<i>Astragalus pulsiferae</i> var. <i>pulsiferae</i>	Ames milkvetch	G4T2	S1		S				
<i>Astragalus remotus</i>	Spring Mountains milkvetch	G2	S2		S	R4S		Y	
<i>Astragalus robbinsii</i> var. <i>occidentalis</i>	Lamoille Canyon milkvetch	G5T2	S2			R4S		Y	
<i>Astragalus solitarius</i>	lonesome milkvetch	G3	S1		S				
<i>Astragalus tiehmii</i>	Tiehm milkvetch	G3	S2		S			Y	MV
<i>Astragalus toquimanus</i>	Toquima milkvetch	G2	S2		S	R4S		Y	PS
<i>Astragalus uncialis</i>	Currant milkvetch	G2	S2		S	R4S			IL
<i>Astragalus yoder-williamsii</i>	Osgood Mountains milkvetch	G3	S1		S		CE		
<i>Atriplex argentea</i> var. <i>longitrichoma</i>	Pahrump silverscale	G5T2	S1		S				
<i>Boechera bodiensis</i>	Bodie Hills rockcress	G3	S2		S	R4S, R5S			MV
<i>Boechera falcifructa</i>	Elko rockcress	G1G2	S1S2		S			Y	
<i>Boechera nevadensis</i>	Spring Mountains rockcress	G1	S1			R4S		Y	
<i>Boechera ophira</i>	Ophir rockcress	G1G2	S1			R4S		Y	EV
<i>Boechera pinzliae</i>	Pinzl rockcress	G1G2	S1			R5S			HV
<i>Boechera rectissima</i> x <i>Boechera retrofracta</i>	Washoe tall rockcress	GNA	S1			R4S		P	
<i>Boechera tiehmii</i>	Tiehm rockcress	G3	S1			R4S, R5S			MV
<i>Castilleja salsuginosa</i>	Monte Neva paintbrush	G1	S1		S		CE	Y	
<i>Caulanthus barnebyi</i>	Barneby stemflower	G1	S2					Y	
<i>Ceanothus bakeri</i>	Carson Range buckbrush	GNA	S1					Y	
<i>Centaurium namophilum</i>	spring-loving centaury	G2Q	S1	LT	S		CE	Y	
<i>Chrysothamnus eremobius</i>	remote rabbitbrush	G1	S1					Y	
<i>Chylismia megalantha</i>	Cane Spring suncup	G3Q	S3					Y	
<i>Cirsium arizonicum</i> var. <i>tenuisectum</i>	Keystone Canyon thistle	G5T2	S2						
<i>Cirsium eatonii</i> var. <i>clokeyi</i>	Clokey thistle	G5T1	S1					Y	
<i>Cirsium eatonii</i> var. <i>viperinum</i>	Snake Range thistle	G5T1	S1					Y	
<i>Cirsium virginense</i>	Virgin River thistle	G2	S1						
<i>Claytonia panamintensis</i>	Panamint spring beauty	G1	S1S2						
<i>Collomia renacta</i>	Barren Valley collomia	G1	S1		S				
<i>Cordylanthus tecopensis</i>	Tecopa birdbeak	G2	S2		S				
<i>Cryptantha clokeyi</i>	Clokey cryptantha	G3	S1						
<i>Cryptantha compacta</i>	mound catseye	G2G3	S1						

Nevada Division of Natural Heritage - At-Risk Plant and Animal Tracking List

Scientific Name	Common Name	G Rank	S Rank	USES A	BLM	USFS	State	Endemic	CCVI
<i>Cryptantha insolita</i>	Las Vegas catseye	GH	SH				CE	Y	
<i>Cryptantha schoolcraftii</i>	Schoolcraft catseye	G3	S3		S			P	MV
<i>Cusickiella quadricostata</i>	Bodie Hills draba	G2	S2		S	R4S			PS
<i>Cylindropuntia multigeniculata</i>	Blue Diamond cholla	G2	S2		S		CE		
<i>Cymopterus basalticus</i>	shadscale spring parsley	G2	S1		S				
<i>Cymopterus cinerarius</i>	gray wavewing	G3	S1						EV
<i>Cymopterus goodrichii</i>	Goodrich biscuitroot	G2	S2		S	R4S		Y	
<i>Cymopterus ripleyi</i> var. <i>saniculoides</i>	sanicle biscuitroot	G3T3Q	S3		C				
<i>Diplacus ovatus</i>	Steamboat monkeyflower	G2	S2		S			Y	
<i>Draba arida</i>	desert whitlowcress	G2	S2			R4S		Y	MV
<i>Draba asterophora</i> var. 3	Heavenly draba	G2T1T2	S1			R4S, R5S			
<i>Draba asterophora</i> var. <i>asterophora</i>	Tahoe draba	G2T2Q	S1S2			R4S, R5S		P	
<i>Draba brachystylis</i>	Wasatch draba	G1G2	S1			R4S			
<i>Draba californica</i>	California draba	G3	S1						
<i>Draba jaegeri</i>	Jaeger whitlowcress	G2	S2			R4S		Y	
<i>Draba paucifructa</i>	Charleston draba	G1G2	S1			R4S		Y	
<i>Draba pedicellata</i> var. <i>wheelerensis</i>	Wheeler Peak whitlowcress	G3T1	S1					Y	
<i>Draba pennellii</i>	Pennell draba	G2	S2			R4S		Y	PS
<i>Draba serpentina</i>	Snake Range whitlowcress	G1	S1			R4S		Y	
<i>Draba subumbellata</i>	White Mountains cushion draba	G3	S1						
<i>Enceliopsis argophylla</i>	silverleaf sunray	G2	S2		S				
<i>Enceliopsis nudicaulis</i> var. <i>corrugata</i>	Ash Meadows sunray	G5T1T2Q	S1	LT	S		CE	P	
<i>Epilobium nevadense</i>	Nevada willowherb	G3	S2		S	R4S			
<i>Eremogone congesta</i> var. <i>charlestonensis</i>	Mount Charleston sandwort	G5T2?	S2?						
<i>Eremogone congesta</i> var. <i>simulans</i>	Lassen sandwort	G5T3?Q	S1S2						
<i>Eremogone kingii</i> var. <i>rosea</i>	rosy King sandwort	G4T2Q	S1			R4S		Y	
<i>Eremogone stenomeris</i>	Meadow Valley sandwort	G2	S2					Y	
<i>Ericameria cervina</i>	Antelope Canyon goldenbush	G2G3	S1		S				
<i>Ericameria compacta</i>	Charleston goldenbush	G2?	S2?			R4S		Y	
<i>Erigeron cavernensis</i>	Cave Mountain fleabane	G1G2	S1S2			R4S		Y	
<i>Erigeron clokeyi</i> var. <i>clokeyi</i>	Clokey fleabane	G4G5T1T2	S1S2					Y	
<i>Erigeron latus</i>	broad fleabane	G3	S1		S				

Nevada Division of Natural Heritage - At-Risk Plant and Animal Tracking List

Scientific Name	Common Name	G Rank	S Rank	UESA	BLM	USFS	State	Endemic	CCVI
<i>Erigeron multiceps</i>	Kern River daisy	G2	S1		C	R5S			
<i>Erigeron ovinus</i>	sheep fleabane	G2	S2		S			Y	PS
<i>Erigeron uncialis</i> var. <i>uncialis</i>	limestone daisy	G3?T2	S1		C	R5S			
<i>Eriogonum alexanderae</i>	Alexander buckwheat	G5T2T3	S2S3		S				
<i>Eriogonum ampullaceum</i>	Mono buckwheat	G3	S1						
<i>Eriogonum anemophilum</i>	windloving buckwheat	G3	S3		S			Y	IL
<i>Eriogonum argophyllum</i>	Sulphur Springs buckwheat	G1	S1				CE	Y	
<i>Eriogonum beatleyae</i>	Beatley buckwheat	G3	S3		S				PS
<i>Eriogonum bifurcatum</i>	Pahrump Valley buckwheat	G3	S2		S				
<i>Eriogonum concinnum</i>	Darin buckwheat	G3	S3		S			Y	
<i>Eriogonum corymbosum</i> var. <i>aureum</i>	golden buckwheat	G5T3?Q	S1S2						
<i>Eriogonum corymbosum</i> var. <i>nilesii</i>	Las Vegas buckwheat	G5T2	S2		S				
<i>Eriogonum crosbyae</i> var. <i>crosbyae</i>	Crosby buckwheat	G4T3	S3		S				HV
<i>Eriogonum crosbyae</i> var. <i>mystrium</i>	Pueblo Mountain buckwheat	G4T2T3	S1						
<i>Eriogonum diatomaceum</i>	Churchill Narrows buckwheat	G1	S1		S		CE	Y	
<i>Eriogonum douglasii</i> var. <i>elkoense</i>	Sunflower Flat buckwheat	G5T1	S1			R4S		Y	
<i>Eriogonum eremicum</i>	hermit buckwheat	G2G3	S1		S				
<i>Eriogonum heermannii</i> var. <i>clokeyi</i>	Clokey buckwheat	G5T2	S2		S	R4S		Y	
<i>Eriogonum holmgrenii</i>	Holmgren buckwheat	G1	S1					Y	
<i>Eriogonum lewisii</i>	Lewis buckwheat	G3Q	S3		S	R4S		Y	MV
<i>Eriogonum mensicola</i>	Pinyon Mesa buckwheat	G3	S2		C				
<i>Eriogonum microthecum</i> var. <i>arceuthinum</i>	Juniper Mountain wild buckwheat	G5TNR	S1					Y	
<i>Eriogonum microthecum</i> var. <i>schoolcraftii</i>	Schoolcraft buckwheat	G5T3	S1		S				
<i>Eriogonum nutans</i> var. <i>glabratum</i>	Deeth buckwheat	G4T2	S2		S			Y	
<i>Eriogonum ovalifolium</i> var. <i>eximium</i>	Slide Mountain buckwheat	G5T3	S2						
<i>Eriogonum ovalifolium</i> var. <i>williamsiae</i>	Steamboat buckwheat	G5T1	S1	LE	S		CE	Y	
<i>Eriogonum pharnaceoides</i> var. <i>cervinum</i>	Deer Lodge buckwheat	G4G5T2	S1		S				
<i>Eriogonum phoeniceum</i>	scarlet buckwheat	G5T1	SNA		S				
<i>Eriogonum prociduum</i>	prostrate buckwheat	G3	S1		C				

Nevada Division of Natural Heritage - At-Risk Plant and Animal Tracking List

Scientific Name	Common Name	G Rank	S Rank	USES A	BLM	USFS	State	Endemic	CCVI
<i>Eriogonum robustum</i>	altered andesite buckwheat	G2	S2		S	R4S		Y	HV
<i>Eriogonum tiehmii</i>	Tiehm buckwheat	G1	S1	LE	S			Y	
<i>Eriogonum viscidulum</i>	sticky buckwheat	G2	S2		S		CE		
<i>Erythranthe brachystylis</i>	lone monkeyflower	G1	S1					Y	
<i>Erythranthe calcicola</i>	limestone monkeyflower	G3	S1S2						
<i>Erythranthe carsonensis</i>	Carson Valley monkeyflower	G2	S2		S				
<i>Erythranthe charlestonensis</i>	Spring Mountains monkeyflower	G1G2	S1S2						
<i>Frangula rubra</i> ssp. <i>nevadensis</i>	Nevada coffeeberry	G4T2T3	S2S3					Y	
<i>Frasera albomarginata</i> var. <i>induta</i>	Clark Mountain green gentian	G5T2	S2						
<i>Frasera gypsicola</i>	Sunnyside green gentian	G2	S2		S		CE		HV
<i>Frasera pahutensis</i>	Pahute green gentian	G3Q	S3					Y	
<i>Galium hilendiae</i> ssp. <i>kingstonense</i>	Kingston Mountains bedstraw	G4T3	S1		C				
<i>Glossopetalon clokeyi</i>	Clokey greasbush	G2	S1			R4S		Y	
<i>Glossopetalon pungens</i> var. <i>glabrum</i>	smooth dwarf greasbush	G2G3T2Q	S2		S	R4S			
<i>Glossopetalon pungens</i> var. <i>pungens</i>	rough dwarf greasbush	G2G3T2Q	S2		S			Y	
<i>Goodmania luteola</i>	yellow spinecape	G3	S1						
<i>Grindelia fraxinoprattensis</i>	Ash Meadows gumplant	G2	S1	LT	S		CE		
<i>Gymnosteris nudicaulis</i>	starcup	G4	S2?						
<i>Helianthus deserticola</i>	dune sunflower	G2G3Q	S3						
<i>Helianthus devernii</i>	Red Rock sunflower	G1	S1					Y	
<i>Horkelia hispidula</i>	White Mountains horkelia	G3	S1			R5S			
<i>Hulsea vestita</i> ssp. <i>inoensis</i>	Inyo hulsea	G5T2T3	S2						
<i>Ionactis caelestis</i>	Red Rock Canyon aster	G1	S1		S			Y	
<i>Ipomopsis congesta</i> var. <i>nevadensis</i>	Toiyabe gilia	G5T1	S1					Y	
<i>Ivesia aperta</i> var. <i>aperta</i>	Sierra Valley mousetails	G2T2	S1		S	R4S			
<i>Ivesia aperta</i> var. <i>canina</i>	Dog Valley ivesia	G2T1	S1			R4S			
<i>Ivesia arizonica</i> var. <i>saxosa</i>	rock purpusia	G3T2	S2		S			Y	
<i>Ivesia cryptocaulis</i>	hidden ivesia	G2	S1			R4S		Y	
<i>Ivesia jaegeri</i>	Jaeger ivesia	G2G3	S2		S	R4S			
<i>Ivesia kingii</i> var. <i>eremica</i>	Ash Meadows mousetails	G4T1	S1	LT	S		CE	Y	
<i>Ivesia pityocharis</i>	Pine Nut Mountains mousetails	G1	S1		S			Y	MV
<i>Ivesia rhypara</i> var. <i>rhypara</i>	grimy mousetails	G2T2	S2		S				MV

Nevada Division of Natural Heritage - At-Risk Plant and Animal Tracking List

Scientific Name	Common Name	G Rank	S Rank	USESA	BLM	USFS	State	Endemic	CCVI
<i>Ivesia webberi</i>	Webber ivesia	G2	S2	LT	S	T	CE		PS
<i>Jamesia tetrapetala</i>	waxflower	G2	S2		S	R4S			PS
<i>Johanneshowellia crateriorum</i>	Lunar Crater buckwheat	G1	S1		S			Y	
<i>Lathyrus grimesii</i>	Grimes vetchling	G2	S2		S	R4S		Y	HV
<i>Lathyrus hitchcockianus</i>	Bullfrog Hills sweetpea	G2	S2		S				
<i>Lepidium davisii</i>	Davis peppercross	G3	S1		S				
<i>Lepidium integrifolium</i>	thickleaf pepperweed	G2G3T2T3	S1		S				
<i>Lepidium montanum</i> var. <i>nevadense</i>	Pueblo Valley peppercross	G5?T1?	S1?		S				
<i>Leptodactylon glabrum</i>	Owyhee prickly phlox	G2	S1		S				
<i>Lewisia maguirei</i>	Maguire bitterroot	G2	S1		S	R4S		Y	
<i>Lomatium packardiae</i>	Succor Creek parsley	G2	S1?		S				
<i>Lomatium roseanum</i>	adobe parsley	G2G3	S2		C				MV
<i>Lotus argyraeus</i> var. <i>multicaulis</i>	scrub lotus	G4?T2	S1?		S				
<i>Lupinus holmgrenianus</i>	Holmgren lupine	G2	S2		S				
<i>Mentzelia argillicola</i>	Pioche blazing star	G1G2	S1S2		S			Y	
<i>Mentzelia inyoensis</i>	Inyo blazing star	G2	S1		S	R5S			
<i>Mentzelia leucophylla</i>	Ash Meadows blazing star	G1	S1	LT	S		CE	Y	
<i>Mentzelia mollis</i>	smooth stickleaf	G2	S1		S				
<i>Mentzelia polita</i>	polished blazing star	G2G3	S2		S				
<i>Mentzelia tiehmii</i>	Tiehm blazingstar	G2	S2		S			Y	PS
<i>Nevada holmgrenii</i>	Holmgren smelowskia	G3	S3		S			Y	PS
<i>Nitrophila mohavensis</i>	Amargosa niterwort	G1	S1	LE	S		CE		
<i>Oenothera cavernae</i>	Gypsum Cave evening primrose	G2G3	S1S2						
<i>Orobanche californica</i> ssp. <i>grayana</i>	Gray broomrape	G4T3T4	S1			R5SP			
<i>Oryctes nevadensis</i>	oryctes	G3	S2S3		S				MV
<i>Pediomelum castoreum</i>	Beaver Dam breadroot	G3	S2		S				
<i>Penstemon albomarginatus</i>	white margined beardtongue	G2	S2		S				
<i>Penstemon arenarius</i>	Nevada dune beardtongue	G2	S2		S	R4S		Y	MV
<i>Penstemon bicolor</i> ssp. <i>bicolor</i>	yellow twotone beardtongue	G3T2Q	S2		S				
<i>Penstemon bicolor</i> ssp. <i>roseus</i>	rosy twotone beardtongue	G3T3Q	S3		S				
<i>Penstemon calcareus</i>	limestone beardtongue	G2G3	S1						
<i>Penstemon concinnus</i>	Tunnel Springs beardtongue	G3	S2		S	R4S			
<i>Penstemon floribundus</i>	Cordelia beardtongue	G2	S2		S			Y	

Nevada Division of Natural Heritage - At-Risk Plant and Animal Tracking List

Scientific Name	Common Name	G Rank	S Rank	USESA	BLM	USFS	State	Endemic	CCVI
<i>Penstemon fruticiformis</i> ssp. <i>amargosae</i>	Death Valley beardtongue	G4T3	S2		S				
<i>Penstemon idahoensis</i>	Idaho beardtongue	G2	S1		S				
<i>Penstemon leiophyllus</i> var. <i>francisci-pennellii</i>	Pennell beardtongue	G3T2	S2		S				
<i>Penstemon leiophyllus</i> var. <i>keckii</i>	Charleston beardtongue	G3T2	S2			R4S		Y	
<i>Penstemon moriahensis</i>	Mount Moriah beardtongue	G2	S1S2		S	R4S		Y	
<i>Penstemon pahutensis</i>	Pahute Mesa beardtongue	G3	S3		S				
<i>Penstemon palmeri</i> var. <i>macranthus</i>	Lahontan beardtongue	G4G5T2?	S2?		S			Y	
<i>Penstemon patricus</i>	dad's penstemon	G4G5T2	S1						
<i>Penstemon procerus</i> var. <i>modestus</i>	Ruby Mountains beardtongue	G5T2T3	S2S3					Y	
<i>Penstemon pudicus</i>	bashful beardtongue	G1G2	S1		S	R4S		Y	
<i>Penstemon rhizomatosus</i>	Schell Creek beardtongue	G1	S1			R4S		Y	
<i>Penstemon rubicundus</i>	Wassuk beardtongue	G2G3	S3		S	R4S		Y	PS
<i>Penstemon thompsoniae</i> ssp. <i>jaegeri</i>	Jaeger beardtongue	G4T2	S3		S	R4S		Y	
<i>Penstemon tiehmii</i>	Tiehm beardtongue	G1	S1		S			Y	
<i>Phacelia beatleyae</i>	Beatley scorpionflower	G3	S2		S			Y	
<i>Phacelia filiae</i>	Clarke phacelia	G3	S3		S			Y	
<i>Phacelia geraniifolia</i>	Jaeger phacelia	G2Q	S2						
<i>Phacelia inconspicua</i>	obscure scorpionflower	G2	S1		S	R4S	CE		
<i>Phacelia inundata</i>	playa phacelia	G3	S2?		S				
<i>Phacelia minutissima</i>	least phacelia	G3	S3		S	R4S			
<i>Phacelia monoensis</i>	Mono County phacelia	G3	S2		S	R4S, R5S			
<i>Phacelia mustelina</i>	weasel phacelia	G3	S3		C				
<i>Phacelia parishii</i>	Parish phacelia	G3	S3		S				
<i>Physaria hitchcockii</i> var. <i>confluens</i>	Quinn Canyon Range bladderpod	G3T1T2	S1S2					Y	
<i>Physaria hitchcockii</i> var. <i>hitchcockii</i>	Hitchcock bladderpod	G3T2	S2			R4S		Y	
<i>Physaria pendula</i>	hanging bladderpod	G2?	S3					Y	
<i>Plagiobothrys glomeratus</i>	altered andesite popcorn flower	G2G3	S2		S	R4S		Y	MV
<i>Polemonium chartaceum</i>	White Mountains skypilot	G2	S1			R4S, R5S			
<i>Polemonium nevadense</i>	Nevada Jacobs ladder	G1Q	S1					Y	
<i>Polycytenium williamsiae</i>	Williams combleaf	G2Q	S2		S	R4S, R5S	CE		
<i>Porophyllum pygmaeum</i>	pygmy poreleaf	G2	S2					Y	
<i>Potentilla basaltica</i>	Soldier Meadow cinquefoil	G2	S1		S				

Nevada Division of Natural Heritage - At-Risk Plant and Animal Tracking List

Scientific Name	Common Name	G Rank	S Rank	USESA	BLM	USFS	State	Endemic	CCVI
<i>Potentilla cottamii</i>	Cottam cinquefoil	G1	S1		S				
<i>Potentilla holmgrenii</i>	Holmgren cinquefoil	G2	S2						
<i>Potentilla hookeriana</i> var. <i>charletii</i>	Charlet cinquefoil	G4TNR	S1					Y	
<i>Potentilla johnstonii</i>	sagebrush cinquefoil	G1	S1			R4S		Y	
<i>Potentilla versicolor</i>	Steens Mountain cinquefoil	G3	S1						
<i>Primula capillaris</i>	Ruby Mountains primrose	G1	S1			R4S		Y	
<i>Primula cusickiana</i> var. <i>nevadensis</i>	Nevada primrose	G2	S1			R4S		Y	
<i>Psoralea kingii</i>	Lahontan indigobush	G3	S3					Y	MV
<i>Ranunculus tritermatus</i>	obscure buttercup	G5T2	S1?		S				
<i>Rorippa subumbellata</i>	Tahoe yellowcress	G1	S1		S	R5S	CE		
<i>Salvia dorrii</i> var. <i>clokeyi</i>	Clokey mountain sage	G5T3	S2					Y	
<i>Salvia funerea</i>	Death Valley sage	G4	S1		S				
<i>Sclerocactus blainei</i>	Blaine pincushion	G1G2Q	S1		S		CY	P	
<i>Sclerocactus nyensis</i>	Nye pincushion cactus	G1Q	S1		S		CY	Y	
<i>Sclerocactus polyancistrus</i>	hermit cactus	G3	S2S3				CY		
<i>Sclerocactus pubispinus</i>	Great Basin fishhook cactus	G3	S2		S		CY		
<i>Sclerocactus schlesseri</i>	Schlesser pincushion	G1Q	S1		S		CY	P	
<i>Senecio pattersonensis</i>	Mono ragwort	G3	S1			R4S, R5S			
<i>Silene clokeyi</i>	Clokey catchfly	G1	S1			R4S		P	
<i>Silene nachlingerae</i>	Nachlinger catchfly	G2	S2		S	R4S			MV
<i>Sphaeralcea caespitosa</i> var. <i>williamsiae</i>	Railroad Valley globemallow	G2T2	S2		S	R4S		Y	PS
<i>Sphaeromeria compacta</i>	Charleston tansy	G2	S1			R4S		Y	
<i>Streptanthus oliganthus</i>	Masonic Mountain jewelflower	G3	S2		S	R4S, R5S			
<i>Stroganowia tiehmii</i>	Tiehm peppergrass	G2	S2		S			Y	PS
<i>Synthyris ranunculina</i>	Charleston kittentails	G1	S1			R4S		Y	
<i>Tonestus alpinus</i>	alpine goldenheads	G2	S2			R4S		Y	HV
<i>Tonestus graniticus</i>	Lone Mountain goldenheads	G1	S1		S			Y	
<i>Townsendia jonesii</i> var. <i>tumulosa</i>	Charleston grounddaisy	G4T3	S3			R4S		Y	
<i>Trifolium andinum</i> var. <i>podocephalum</i>	Currant Summit clover	G3G4T2?	S1		S	R4S		Y	
<i>Trifolium eriocephalum</i> var. <i>villiferum</i>	woolly clover	G5T1T2	S1S2						
<i>Trifolium leibergii</i>	Leiberg clover	G3	S2			R4S			
<i>Trifolium rollinsii</i>	Rollins clover	G2G3Q	S2			R4S		Y	EV
<i>Viola charlestonensis</i>	Charleston violet	G3Q	S2			R4S			

Nevada Division of Natural Heritage - At-Risk Plant and Animal Tracking List

Scientific Name	Common Name	G Rank	S Rank	USESA	BLM	USFS	State	Endemic	CCVI
<i>Viola lithion</i>	rock violet	G1G2	S1		S	R4S			
Monocots									
<i>Calochortus striatus</i>	alkali mariposa lily	G3	S1		S				
<i>Imperata brevifolia</i>	satintail	G3	S1S2						
<i>Poa abbreviata</i> ssp. <i>marshii</i>	Marsh bluegrass	G5T2	S1			R4S			
<i>Sisyrinchium funereum</i>	Death Valley blue eyed grass	G2	S1S2						
<i>Sisyrinchium radicum</i>	Saint George blue eyed grass	G2?Q	S1S2		S				
<i>Spiranthes diluvialis</i>	Ute ladies tresses	G2G3	S1	LT	S		CE		
<i>Spiranthes infernalis</i>	Ash Meadows lady's tresses	G2	S1					Y	
Invertebrate Animals									
Mollusks									
<i>Anodonta californiensis</i>	California floater	G3	S1		S				MV
<i>Discus shimekii</i>	Striate Disc	G5	S1						
<i>Eremarionta rowelli</i>	Eastern Desert Snail	G3G4	S1						
<i>Eremopyrgus eganensis</i>	Steptoe hydrobe	G1	S1		S			Y	PS
<i>Fluminicola dalli</i>	Pyramid Lake pebblesnail	G1	S1		S			Y	HV
<i>Fluminicola multifarius</i>	Shasta pebblesnail	G2	SNR						
<i>Fluminicola turbiniformis</i>	turban pebblesnail	G3	S3						HV
<i>Fluminicola virginius</i>	Virginia Mountains pebblesnail	G1	S1		S			Y	HV
<i>Fluminicola warnerensis</i>	Warner Pebblesnail	G2	S1						
<i>Gonidea angulata</i>	Western Ridged Mussel	G3	S1		S				
<i>Juga acutifilosa</i>	Scalloped Juga	G2?	S1						
<i>Margaritifera falcata</i>	western pearlshell	G5	S1						
<i>Oreohelix handi</i>	Spring Mountainsnail	G1	S1					Y	
<i>Oreohelix hemphilli</i>	Whitepine mountainsnail	G2	S2						
<i>Oreohelix jaegeri</i>	Kyle Canyon mountainsnail	G1	S1					P	
<i>Oreohelix loisae</i>	Goshute mountainsnail	G1G3	S2		S			Y	
<i>Oreohelix nevadensis</i>	Schell Creek Mountainsnail	G1	S1					Y	
<i>Oreohelix strigosa</i>	Rocky Mountainsnail	G5	SNR						
<i>Oreohelix strigosa depressa</i>	Great Basin Mountainsnail	G5T5	S1						
<i>Pristiloma chersinella</i>	black-footed tightcoil	G3G4	S3						
<i>Pyrgulopsis aloba</i>	Duckwater pyrg	G1	S1		S			Y	PS
<i>Pyrgulopsis anatina</i>	southern Duckwater pyrg	G1	S1		S			Y	PS
<i>Pyrgulopsis anguina</i>	longitudinal gland pyrg	G1	S1		S				EV
<i>Pyrgulopsis augustae</i>	elongate Cain Spring pyrg	G1	S1					Y	EV
<i>Pyrgulopsis aurata</i>	Pleasant Valley pyrg	G1	S1					Y	EV

Nevada Division of Natural Heritage - At-Risk Plant and Animal Tracking List

Scientific Name	Common Name	G Rank	S Rank	USESA	BLM	USFS	State	Endemic	CCVI
<i>Pyrgulopsis avernalis</i>	Moapa pebblesnail	G1G2	S1S2		S			Y	PS
<i>Pyrgulopsis bacchus</i>	Grand Wash Springsnail	G2	S1						
<i>Pyrgulopsis basiglans</i>	large gland Carico pyrg	G1	S1		S			Y	EV
<i>Pyrgulopsis bifurcata</i>	small gland Carico pyrg	G1	S1					Y	EV
<i>Pyrgulopsis breviloba</i>	Flag pyrg	G1	S1		S			Y	EV
<i>Pyrgulopsis bruesi</i>	Fly Ranch pyrg	G1	S1					Y	HV
<i>Pyrgulopsis bryantwalkerii</i>	Cortez Hills pebblesnail	G1	S1		S			Y	EV
<i>Pyrgulopsis carinata</i>	carinate Duckwater pyrg	G1	S1		S			Y	PS
<i>Pyrgulopsis carinifera</i>	Moapa Valley pyrg	G1	S1		S			Y	PS
<i>Pyrgulopsis coloradensis</i>	Blue Point pyrg	G1	S1					Y	MV
<i>Pyrgulopsis cruciglans</i>	transverse gland pyrg	G1	S1		S			Y	EV
<i>Pyrgulopsis crystalis</i>	Crystal Spring pyrg	G1	S1		S			Y	PS
<i>Pyrgulopsis cybele</i>	Goddess pyrg	G1	S1					P	
<i>Pyrgulopsis deaconi</i>	Spring Mountains pyrg	G1	S1		S			Y	HV
<i>Pyrgulopsis dixensis</i>	Dixie Valley pyrg	G1	S1		S			Y	MV
<i>Pyrgulopsis erythropoma</i>	Ash Meadows pebblesnail	G1	S1		S			Y	PS
<i>Pyrgulopsis fairbanksensis</i>	Fairbanks pyrg	G1	S1		S			Y	PS
<i>Pyrgulopsis fausta</i>	Corn Creek pyrg	G1	S1					Y	PS
<i>Pyrgulopsis gracilis</i>	Emigrant pyrg	G1	S1		S			Y	EV
<i>Pyrgulopsis hamlinensis</i>	Hamlin Valley pyrg	G1	S1						
<i>Pyrgulopsis hovinghi</i>	Upper Thousand Spring pyrg	G1	S1					Y	EV
<i>Pyrgulopsis hubbsi</i>	Hubbs pyrg	G1	S1		S			Y	PS
<i>Pyrgulopsis humboldtensis</i>	Humboldt pyrg	G1	S1		S			Y	EV
<i>Pyrgulopsis imperialis</i>	Kings River pyrg	G1	S1	Nevada				Y	EV
<i>Pyrgulopsis isolata</i>	Elongate-gland springsnail	G1	S1		S			Y	PS
<i>Pyrgulopsis kolobensis</i>	Toquerville Springsnail	G5	S3						
<i>Pyrgulopsis landyei</i>	Landyes pyrg	G1	S1		S			Y	PS
<i>Pyrgulopsis lata</i>	Butterfield pyrg	G1	S1		S			Y	EV
<i>Pyrgulopsis lentiglans</i>	Crittenden pyrg	G1	S1					Y	EV
<i>Pyrgulopsis leporina</i>	Elko pyrg	G1	S1					Y	EV
<i>Pyrgulopsis licina</i>	Curved filament pyrg	GNR	S1					Y	
<i>Pyrgulopsis limaria</i>	squat Mud Meadows pyrg	G1	S1		S			Y	HV
<i>Pyrgulopsis lockensis</i>	Lockes pyrg	G1	S1					Y	PS
<i>Pyrgulopsis longiglans</i>	western Lahontan pyrg	G2	S2		S			Y	
<i>Pyrgulopsis marcida</i>	Hardy pyrg	G2	S1		S			Y	EV
<i>Pyrgulopsis merriami</i>	Pahrnagat pebblesnail	G1	S1		S			Y	PS
<i>Pyrgulopsis micrococcus</i>	Oasis Valley pyrg	G1	S1		S			Y	MV

Nevada Division of Natural Heritage - At-Risk Plant and Animal Tracking List

Scientific Name	Common Name	G Rank	S Rank	USESA	BLM	USFS	State	Endemic	CCVI
<i>Pyrgulopsis militaris</i>	northern Soldier Meadow pyrg	G1	S1		S			Y	HV
<i>Pyrgulopsis millenaria</i>	Twentyone Mile pyrg	G1	S1					Y	EV
<i>Pyrgulopsis montana</i>	Camp Valley pyrg	G1	S1		S			Y	EV
<i>Pyrgulopsis nanus</i>	Distal-gland pyrg	G1	S1		S			Y	PS
<i>Pyrgulopsis neritella</i>	neritiform Steptoe Ranch pyrg	G1	S1		S			Y	PS
<i>Pyrgulopsis notidicola</i>	elongate Mud Meadows pyrg	G1	S1					Y	HV
<i>Pyrgulopsis orbiculata</i>	sub-globose Steptoe Ranch pyrg	G1	S1		S			Y	PS
<i>Pyrgulopsis papillata</i>	Big Warm Spring pyrg	G1	S1		S			Y	PS
<i>Pyrgulopsis peculiaris</i>	bifid duct pyrg	G2	S1		S				EV
<i>Pyrgulopsis pellita</i>	Antelope Valley pyrg	G1	S1					Y	EV
<i>Pyrgulopsis pictilis</i>	ovate Cain Spring pyrg	G1	S1		S			Y	EV
<i>Pyrgulopsis pisteri</i>	median-gland Nevada pyrg	G1	S1		S			Y	PS
<i>Pyrgulopsis planulata</i>	flat-topped Steptoe pyrg	G1	S1		S			Y	PS
<i>Pyrgulopsis ruinoso</i>	Fish Lake Valley pyrg	GX	S1					Y	HV
<i>Pyrgulopsis sadai</i>	Sadas pyrg	G2	S1S2		S			Y	EV
<i>Pyrgulopsis sanchezi</i>	Sanchez pyrg	GNR	S2						
<i>Pyrgulopsis sathos</i>	White River Valley pyrg	G1	S1		S			Y	EV
<i>Pyrgulopsis serrata</i>	Northern Steptoe pyrg	G1	S1		S			Y	EV
<i>Pyrgulopsis sterilis</i>	Sterile basin pyrg	G1	S1					Y	EV
<i>Pyrgulopsis sublata</i>	Lake Valley pyrg	G1	S1		S			Y	EV
<i>Pyrgulopsis sulcata</i>	southern Steptoe pyrg	G1	S1		S			Y	PS
<i>Pyrgulopsis turbatrix</i>	southwest Nevada pyrg	G3	S1		S				HV
<i>Pyrgulopsis umbilicata</i>	southern Soldier Meadow pyrg	G1Q	S1		S			Y	HV
<i>Pyrgulopsis variegata</i>	northwest Bonneville pyrg	G2	S1						EV
<i>Pyrgulopsis varneri</i>	Varner's pyrg	G1	S1					Y	
<i>Pyrgulopsis villacampae</i>	Duckwater Warm Springs pyrg	G1	S1		S			Y	PS
<i>Pyrgulopsis vinyardi</i>	Vinyards pyrg	G1	S1		S			Y	EV
<i>Pyrgulopsis wongi</i>	Wong's springsnail	G2	S1		S	R5S			MV
<i>Tryonia angulata</i>	sportinggoods tryonia	G1	S1		S			Y	PS
<i>Tryonia clathrata</i>	grated tryonia	G2	S2		S			Y	PS
<i>Tryonia elata</i>	Point of Rocks tryonia	G1	S1		S			Y	PS
<i>Tryonia ericae</i>	minute tryonia	G1	S1		S			Y	PS
<i>Tryonia infernalis</i>	Blue Point Springs Tryonia	GNR	S1					Y	

Nevada Division of Natural Heritage - At-Risk Plant and Animal Tracking List

Scientific Name	Common Name	G Rank	S Rank	UESA	BLM	USFS	State	Endemic	CCVI
<i>Tryonia monitorae</i>	Monitor tryonia	G1	S1					Y	PS
<i>Tryonia variegata</i>	Amargosa tryonia	G2	S2		S				PS
<i>Valvata humeralis</i>	Glossy Valvata	G5	S1						

Crustaceans

<i>Eubbranchipus hesperius</i>		G5	SNR						
<i>Pacifastacus connectens</i>	Snake River pilose crayfish	G3G4	SNR						
<i>Pacifastacus gambelii</i>	pilose crayfish	G4G5	S1						
<i>Paruroctonus arenicola arenicola</i>	Mesquite Dunes Scorpion	GNRTNR	S1					P	
<i>Pseudouroctonus peccatum</i>	a scorpion	G1	S1					Y	
<i>Sclerobunus unguatus</i>	cave obligate harvestman	G1G2	S1S2						

Insects

<i>Aegialia crescenta</i>	Crescent Dunes aegialian scarab	G1	S1		S			Y	
<i>Aegialia hardyi</i>	Hardy's aegialian scarab	G1	S1		S			Y	
<i>Aegialia knighti</i>	aegialian scarab beetle	G1?	S1		S			Y	
<i>Aegialia magnifica</i>	large aegialian scarab	G1	S1		S			Y	
<i>Ambrysus amargosus</i>	Ash Meadows naucorid	G1	S1	LT	S			Y	
<i>Andrena balsamorhizae</i>	Mojave gypsum bee	G2	S1		S				
<i>Ashmeadiella sculleni</i>	A Leafcutting Bee	GNR	SNR						
<i>Capnia hornigi</i>	Esmeralda Snowfly	G3	S1						
<i>Capnia lacustra</i>	Tahoe benthic stonefly	G1	S1					Y	
<i>Cercyonis oetus alkalorum</i>	Big Smoky wood nymph	G5T1	S1		S			Y	
<i>Cercyonis oetus pallescens</i>	pallid wood nymph	G5T1	S1					Y	
<i>Cercyonis pegala carsonensis</i>	Carson Valley wood nymph	G5T1T2	S2		S				
<i>Cercyonis pegala paucilineatus</i>	plain-marked wood nymph	G5T2	S2						
<i>Cercyonis pegala pluvialis</i>	White River wood nymph	G5T2	S2		S				
<i>Chlosyne acastus robusta</i>	Spring Mountains acastus checkerspot	G4G5T2	S1			R4S		Y	
<i>Cinacanthus crescentus</i>	Crescent Dunes aphodius scarab	G1?	S1?		S			Y	
<i>Coenonycha pygmaea</i>	Sand Mountain pygmy scarab	G1?	S1		S			Y	
<i>Danaus plexippus plexippus</i>	monarch butterfly	G4T3	S3	C	S				
<i>Euphilotes ancilla cryptica</i>	Spring Mountains Dark Blue Butterfly	G5TNR	S1S2					Y	
<i>Euphilotes ancilla giulianii</i>	Giuliani's blue	G5T2T4	S1						
<i>Euphilotes ancilla purpura</i>	Spring Mountains dark blue	G5T2	S2			R4S		Y	
<i>Euphilotes ancilla shieldsi</i>	Shield's blue	G5T3?	S1						

Nevada Division of Natural Heritage - At-Risk Plant and Animal Tracking List

Scientific Name	Common Name	G Rank	S Rank	USESA	BLM	USFS	State	Endemic	CCVI
<i>Euphilotes battoides fusimaculata</i>	fused battoides blue	G5T1	S1					Y	
<i>Euphilotes bernardino inyomontana</i>	Bret's blue (Spring Mountains phenotype)	G4T3T4	S1						
<i>Euphilotes bernardino minuta</i>	Baking Powder Flat blue	G4T1	S1		S			Y	
<i>Euphilotes enoptes aridorum</i>	Peavine blue	G5T1	S1					P	
<i>Euphilotes enoptes primavera</i>	early blue	G5T1	S1		S			P	
<i>Euphilotes mojave virginensis</i>	northern Mojave blue	G3T1T2	S1		S				
<i>Euphilotes pallescens arenamontana</i>	Sand Mountain blue	G3?T1	S1		S			Y	
<i>Euphilotes pallescens calneva</i>	Honey Lake blue	G3?T1	S1						
<i>Euphilotes pallescens mattonii</i>	Mattoni's blue	G3?T1	S1		S			Y	
<i>Euphilotes pallescens ricei</i>	Rice's blue	G3?T1	S1		S			Y	
<i>Euphydryas chalcedona morandi</i>	Morand's checkerspot	G5T2	S2			R4S		Y	
<i>Euphydryas editha monoensis</i>	Mono checkerspot	G5T2	S1			R5S			
<i>Formica microphthalma</i>	northern Sierra endemic ant	G2	S1						
<i>Gaufinia jarbidge</i>	Jarbidge stonefly	GNR	SNR					Y	
<i>Haliphus eremicus</i>	Warm Springs crawling water beetle	GNR	S1					Y	
<i>Hesperia colorado mojavenis</i>	Spring Mountains comma skipper	G5T3	S3					Y	
<i>Hesperia miriamae longaevicola</i>	White Mountains skipper	G2G3T1T2	S1		S				
<i>Hesperia uncas fulvapalla</i>	Railroad Valley skipper	G4G5T1	S1		S			Y	
<i>Hesperia uncas giulianii</i>	Mono Basin skipper	G4G5T1	S1		S				
<i>Hesperia uncas grandiosa</i>	White River Valley skipper	G4G5T1	S1		S			Y	
<i>Hesperopsis graciellae</i>	MacNeill sooty wing skipper	G2?	S1		S				
<i>Lasius nevadensis</i>	Charleston ant	G1?	S1					Y	
<i>Limenitis archippus idaho</i>	Idaho viceroy	G5T4Q	S1						
<i>Limenitis archippus lahontani</i>	Nevada viceroy	G5T1T2	S1S2					Y	
<i>Limenitis archippus obsoleta</i>	obsolete viceroy butterfly	G5T3T4	S1						
<i>Limenitis lorquini pallidafacies</i>	White Mountains admiral	G5T2T3	S1						
<i>Limenitis weidemeyerii nevadae</i>	Nevada admiral	G5T3	S2S3					Y	
<i>Lycaena editha obscuramaculata</i>	Elko copper	G5T2T3Q	S3						
<i>Lycaena rubidus incana</i>	White Mountains ruddy copper	G5T2T3	S1						
<i>Malenka murvoshi</i>	Spring Mountains Forestfly	GNR	S1					Y	
<i>Megandrena mentzeliae</i>	Red-tailed blazing star bee	G2	S2					Y	

Nevada Division of Natural Heritage - At-Risk Plant and Animal Tracking List

Scientific Name	Common Name	G Rank	S Rank	UESA	BLM	USFS	State	Endemic	CCVI
<i>Microcylloepus thermarum</i>		GNR	SNR					P	
<i>Miloderes amargosensis</i>	Rulien's Amargosa dune weevil	G1	S1		S			Y	
<i>Miloderes mercuryensis</i>	Mercury weevil	G1	S1					Y	
<i>Myrmecocystus snellingi</i>	dune honey ant	G2?	S2?					Y	
<i>Nebria baumanni</i>	Spring Mountains nebria	G1	S1					Y	
<i>Neivamyrmex nyensis</i>	endemic ant	G1?	S1					Y	
<i>Oroperla barbara</i>	Gilltail Springfly	G3	S1						
<i>Parnassius smintheus sayii</i>	Nevada smintheus	G5TNR	S1						
<i>Pelocoris biimpressus shoshone</i>	Pahranagat naucorid bug	G1G3T1	S1		S			Y	
<i>Pelocoris shoshone amargosus</i>	Amargosa naucorid	G1G3T1	S1						
<i>Perdita celadona</i>	Mojave twilight bee	GNR	S1					Y	
<i>Perdita cephalotes</i>	big-headed perdita	G1G3	S1						
<i>Perdita crotonis caerulea</i>	Virgin River perdita	GNRT2	S2						
<i>Perdita euphorbiae</i>	Spurge-loving Perdita	GNR	S1						
<i>Perdita exusta</i>	Tiquilia perdita	GNR	S1					Y	
<i>Perdita fulvescens</i>	Moapa Perdita	GNR	S1					P	
<i>Perdita inornata</i>	Unadorned Perdita	GNR	SNR						
<i>Perdita meconis</i>	Mojave poppy bee	G2	S1		S			P	
<i>Perdita prodigiosa</i>	Prodigious perdita	GNR	SNR					Y	
<i>Perdita stephanomeriae</i>	A Perdita bee	GNR	S1						
<i>Perdita vespertina</i>	Virgin River Twilight Bee	GNR	S1					Y	
<i>Perdita xerophila</i>	Desert-loving Perdita	GNR	SNR						
<i>Philotiella speciosa septentrionalis</i>	Great Basin small blue	G3T1	S1		S			Y	
<i>Phyciodes cocyta arenacolor</i>	Steptoe Valley crescent-spot	G5T1	S1		S			Y	
<i>Phyciodes pulchella shoshoni</i>	Humboldt River crescent-spot	G5T2	S2					Y	
<i>Plebejus icarioides albihalos</i>	White Mountains icarioides blue	G5T2T3	S1						
<i>Plebejus icarioides austinorum</i>	Spring Mountains icarioides blue	G5T3	S3					Y	
<i>Plebejus saepiolus albomontanus</i>	White Mountains saepiolus blue	G5T2	S1						
<i>Plebejus shasta charlestonensis</i>	Mt. Charleston blue	G5T1	S1	LE		E		Y	
<i>Polites sabuleti albamontana</i>	White Mountains sandhill skipper	G5T2	S1						
<i>Polites sabuleti alkaliensis</i>	alkaline sandhill skipper	G5T3T4	SNR						

Nevada Division of Natural Heritage - At-Risk Plant and Animal Tracking List

Scientific Name	Common Name	G Rank	S Rank	USESA	BLM	USFS	State	Endemic	CCVI
<i>Polites sabuleti basinensis</i>	pallid skipper	G5T2	S2					Y	
<i>Polites sabuleti genoa</i>	Carson Valley sandhill skipper	G5T3T4	S1						
<i>Polites sabuleti nigrescens</i>	dark sandhill skipper	G5T3	S3					Y	
<i>Polites sabuleti sinemaculata</i>	Denio sandhill skipper	G5T1	S1		S			Y	
<i>Pseudocopaeodes eunus alinea</i>	Ash Meadows alkali skipper	G3T1T3	S1						
<i>Pseudocopaeodes eunus flavus</i>	Nevada alkali skipperling	G3T3	S1		S				
<i>Pseudocopaeodes eunus obscurus</i>	Carson wandering skipper	G3T1	S1	LE	S				
<i>Pseudocotalpa giulianii</i>	Giuliani's dune scarab	G1	S1		S			Y	
<i>Rhaphiomidas moapa</i>	Moapa mydas fly	G1	S1					Y	
<i>Satyrium sylvinus megapallidum</i>	pallid sylvinus hairstreak	G5T2T4	S2						
<i>Serica ammomenisco</i>	Crescent Dunes serican scarab	G1	S1		S			Y	
<i>Serica humboldti</i>	Humboldt serican scarab	G1	S1		S			Y	
<i>Serica psammobunus</i>	Sand Mountain serican scarab	G1	S1		S			Y	
<i>Sierracapnia washoe</i>	Washoe snowfly	GNR	S2					Y	
<i>Speleketor flocki</i>	Flocki booklouse	GNR	S1						
<i>Speyeria carolae</i>	Carole's silverspot	G2	S2S3					Y	
<i>Speyeria hesperis elko</i>	Elko silverspot	G5T1	S1					Y	
<i>Speyeria hesperis greyi</i>	Grey's silverspot	G5T1	S1					Y	
<i>Speyeria nokomis apacheana</i>	Apache silverspot butterfly	G3T3	S3			R5S			
<i>Speyeria nokomis carsonensis</i>	Carson Valley silverspot	G3T1T2	S1		S				
<i>Stenammas wheelerorum</i>	endemic ant	G1?	S1					Y	
<i>Stenelmis calida calida</i>	Devils Hole warm spring riffle beetle	GNRT1	S1		S			Y	
<i>Stenelmis lariversi</i>	Ash Springs riffle beetle	G1	S1		S			Y	
<i>Stenelmis moapa</i>	Moapa Warm Spring riffle beetle	G1	S1		S			Y	
<i>Thorybes mexicana blanca</i>	White Mountains cloudy wing	G5T2	S1						
<i>Usingerina moapensis</i>	Moapa Warm Springs naucorid	G1	S1					Y	
<i>Utacapnia tahoensis</i>	endemic Tahoe stonefly	G3	S1						

Vertebrate Animals

Fishes

<i>Catostomus clarkii intermedius</i>	White River desert sucker	G3G4T1T2Q	S1		S		PF	Y	HV
---------------------------------------	---------------------------	-----------	----	--	---	--	----	---	----

Nevada Division of Natural Heritage - At-Risk Plant and Animal Tracking List

Scientific Name	Common Name	G Rank	S Rank	USESA	BLM	USFS	State	Endemic	CCVI
<i>Catostomus clarkii</i> ssp. 2	Meadow Valley Wash desert sucker	G3G4T2	S2		S		PF	Y	PS
<i>Catostomus discobolus</i>	Bluehead Sucker	G4	S1						
<i>Catostomus latipinnis</i>	Flannelmouth Sucker	G3G4	S1						PS
<i>Catostomus</i> sp. 1	Wall Canyon sucker	G1	S1				PF	Y	MV
<i>Catostomus virescens</i>	Bonneville-Upper Snake River (form) Bluehead Sucker	GNR	S1						
<i>Catostomus warnerensis</i>	Warner sucker	G1	S1	LT			TF		MV
<i>Chasmistes cujus</i>	Cui-ui	G1	S1	LE	S		EF	Y	MV
<i>Cottus confusus</i>	Shorthead Sculpin	G5	S1						
<i>Cottus</i> sp. 3	White River sculpin	G1	S1					Y	
<i>Crenichthys baileyi albivallis</i>	Preston White River springfish	G2T1	S1				PF	Y	PS
<i>Crenichthys baileyi baileyi</i>	White River springfish	G2T1	S1	LE	S		EF	Y	PS
<i>Crenichthys baileyi grandis</i>	Hiko White River springfish	G2T1	S1	LE	S		EF	Y	PS
<i>Crenichthys baileyi moapae</i>	Moapa White River springfish	G2T2	S2					Y	PS
<i>Crenichthys baileyi thermophilus</i>	Moorman White River springfish	G2T1	S1				PF	Y	PS
<i>Crenichthys nevadae</i>	Railroad Valley springfish	G1	S1	LT	S	T	TF	Y	PS
<i>Cyprinodon diabolis</i>	Devils Hole pupfish	G1	S1	LE	S		EF	Y	PS
<i>Cyprinodon nevadensis mionectes</i>	Ash Meadows Amargosa pupfish	G2T2	S2	LE	S		EF	Y	PS
<i>Cyprinodon nevadensis pectoralis</i>	Warm Springs Amargosa pupfish	G2T1	S1	LE	S		EF	Y	PS
<i>Empetrichthys latos</i>	Pahrump poolfish	G1	S1	LE	S		EF	Y	MV
<i>Eremichthys acros</i>	Desert Dace	G1	S1	LT	S		TF	Y	MV
<i>Gila elegans</i>	bonytail chub	G1	S1	LE	S		EF		PS
<i>Gila robusta jordani</i>	White River Chub	G3T1	S1	LE	S		EF	Y	PS
<i>Gila seminuda</i>	Virgin River chub	G1	S1	LE			EF		PS
<i>Gila seminuda</i> pop. 2	Virgin River chub (Muddy River pop.)	G1T1Q	S1		S		PF		
<i>Lepidomeda albivallis</i>	White River spinedace	G1	S1	LE	S		EF	Y	PS
<i>Lepidomeda copei</i>	Northern Leatherside Chub	G3	S1		S				
<i>Lepidomeda mollispinis mollispinis</i>	Virgin River spinedace	G2T2	S1				PF		PS
<i>Lepidomeda mollispinis pratensis</i>	Big Spring spinedace	G2T1	S1	LT	S		TF	Y	MV
<i>Moapa coriacea</i>	Moapa dace	G1	S1	LE	S		EF	Y	PS
<i>Oncorhynchus clarkii bouvieri</i>	Yellowstone cutthroat trout	G5T4	S1		S		GF		MV

Nevada Division of Natural Heritage - At-Risk Plant and Animal Tracking List

Scientific Name	Common Name	G Rank	S Rank	USESA	BLM	USFS	State	Endemic	CCVI
<i>Oncorhynchus clarkii henshawi</i>	Lahontan cutthroat trout	G5T3	S3	LT	S	T	GF		MV
<i>Oncorhynchus clarkii utah</i>	Bonneville cutthroat trout	G5T4	S1		S	R4S	GF		
<i>Oncorhynchus mykiss gairdneri</i>	inland Columbia Basin redband trout	G5T4	S2		S		GF		
<i>Oncorhynchus mykiss</i> pop. 4	Warner Valley Redband Trout	G5T2Q	S1				GF		HV
<i>Plagopterus argentissimus</i>	Woundfin	G1	S1	LE, XN	S		EF		PS
<i>Relictus solitarius</i>	Relict Dace	G2G3	S3		S		PF	Y	MV
<i>Rhinichthys cataractae</i>	longnose dace	G5	S2						
<i>Rhinichthys osculus lariversi</i>	Big Smoky Valley speckled dace	G5T1	S1		S		PF	Y	HV
<i>Rhinichthys osculus lethoporus</i>	Independence Valley speckled dace	G5T1	S1	LE	S		EF	Y	HV
<i>Rhinichthys osculus moapae</i>	Moapa speckled dace	G5T1	S1		S		PF	Y	PS
<i>Rhinichthys osculus nevadensis</i>	Ash Meadows speckled dace	G5T1	S1	LE	S		EF	Y	PS
<i>Rhinichthys osculus oligoporus</i>	Clover Valley speckled dace	G5T1	S1	LE	S		EF	Y	HV
<i>Rhinichthys osculus</i> ssp. 10	Diamond Valley speckled dace	G5TH	SH				PF	Y	HV
<i>Rhinichthys osculus</i> ssp. 11	Meadow Valley speckled dace	G5T2	S2		S			Y	PS
<i>Rhinichthys osculus</i> ssp. 5	Monitor Valley speckled dace	G5T1	S1		S		PF	Y	HV
<i>Rhinichthys osculus</i> ssp. 6	Oasis Valley speckled dace	G5T1	S1		S		PF	Y	PS
<i>Rhinichthys osculus</i> ssp. 7	White River speckled dace	G5T2T3Q	S2S3		S		PF	Y	MV
<i>Rhinichthys osculus velifer</i>	Pahranagat speckled dace	G5T1Q	S1		S		SF	Y	PS
<i>Salvelinus confluentus</i> pop. 4	bull trout (Jarbidge River basin pop)	G5T2Q	S1	LT	S	T	GF		HV
<i>Siphateles alvordensis</i>	Alvord chub	G2	S1		S		PF		HV
<i>Siphateles bicolor euchila</i>	Fish Creek Springs tui chub	G4T1Q	S1				PF	Y	
<i>Siphateles bicolor eurysoma</i>	Sheldon tui chub	G4T2	S1				PF		HV
<i>Siphateles bicolor isolata</i>	Independence Valley tui chub	G4T1Q	S1		S		PF	Y	PS
<i>Siphateles bicolor newarkensis</i>	Newark Valley Tui Chub	G4T1	S1		S		PF	Y	
<i>Siphateles bicolor</i> ssp. 10	Charnock Springs tui chub	G4T1Q	S1		S			Y	
<i>Siphateles bicolor</i> ssp. 3	Duckwater Creek tui chub	G4T1	S1					Y	
<i>Siphateles bicolor</i> ssp. 4	Fish Lake Valley Tui Chub	G4T1Q	S1	Nevada	S		PF	Y	PS
<i>Siphateles bicolor</i> ssp. 5	Hot Creek Valley tui chub	G4T1Q	S1		S		PF	Y	
<i>Siphateles bicolor</i> ssp. 6	Little Fish Lake Valley tui chub	G4T1	S1		S			Y	HV

Nevada Division of Natural Heritage - At-Risk Plant and Animal Tracking List

Scientific Name	Common Name	G Rank	S Rank	USESA	BLM	USFS	State	Endemic	CCVI
<i>Siphateles bicolor</i> ssp. 7	Railroad Valley tui chub	G4T1Q	S1		S		PF	Y	MV
<i>Siphateles bicolor</i> ssp. 8	Big Smoky Valley tui chub	G4T1	S1		S		PF	Y	HV
<i>Siphateles bicolor</i> ssp. 9	Dixie Valley tui chub	G4T1Q	S1					Y	PS
<i>Siphateles bicolor vaccaceps</i>	Cowhead Lake Tui Chub	G4T1	S1						
<i>Xyrauchen texanus</i>	razorback sucker	G1	S1	LE	S		EF		IL

Amphibians

<i>Anaxyrus cognatus</i>	Great Plains toad	G5	S2						PS
<i>Anaxyrus microscaphus</i>	Arizona toad	G3G4	S2		S				PS
<i>Anaxyrus monfontanus</i>	Hot Creek toad	G1	S1				PA	Y	
<i>Anaxyrus nelsoni</i>	Amargosa toad	G2	S2		S		PA	Y	PS
<i>Anaxyrus nevadensis</i>	Railroad Valley toad	G1	S1				PA	Y	
<i>Anaxyrus williamsi</i>	Dixie Valley toad	G1	S1	LE	S		PA	Y	
<i>Lithobates onca</i>	relict leopard frog	G1G2	S1		S		PA		MV
<i>Rana luteiventris</i> pop. 3	Columbia spotted frog (Great Basin pop)	G4T2T4Q	S2S3		S	R4S	PA		HV
<i>Rana sierrae</i>	Sierra Nevada yellow-legged frog	G2	SH	LE	S	E			PS

Reptiles

<i>Actinemys marmorata</i>	northwestern pond turtle	G3	S2		S	R5S	PR		PS
<i>Elgaria coerulea palmeri</i>	Sierra alligator lizard	G5T4	S2S3		S		PR		PS
<i>Elgaria coerulea shastensis</i>	Shasta alligator lizard	G5T4	S1				PR		MV
<i>Gopherus agassizii</i>	Mohave desert tortoise	G3	S2S3	LT	S	T	TR		PS
<i>Heloderma suspectum cinctum</i>	banded Gila monster	G4T4	S2		S		PR		HV
<i>Lampropeltis pyromelana</i>	Arizona mountain kingsnake	G4	S2		S		PR		HV
<i>Plestiodon gilberti rubricaudatus</i>	western red-tailed skink	G5T4	S2S3		S				PS

Birds

<i>Accipiter gentilis</i>	Northern Goshawk	G5	S3		S	R4S, R5S	SB		MV
<i>Agelaius tricolor</i>	Tricolored Blackbird	G1G2	S1B						PS
<i>Asio flammeus</i>	Short-eared Owl	G5	S2		S		SB		PS
<i>Asio otus</i>	Long-eared Owl	G5	S3						
<i>Auriparus flaviceps</i>	Verdin	G5	S3						PS
<i>Coccyzus americanus</i>	Yellow-billed Cuckoo	G5	S1B	LT	S	T			MV
<i>Contopus cooperi</i>	Olive-sided Flycatcher	G4	S2B						IL
<i>Dendragapus fuliginosus</i>	Sooty Grouse	G5	S1				GB		PS
<i>Empidonax traillii adastus</i>	Great Basin Willow Flycatcher	G5T5	S1S2B		S	R5S			PS

Nevada Division of Natural Heritage - At-Risk Plant and Animal Tracking List

Scientific Name	Common Name	G Rank	S Rank	USESA	BLM	USFS	State	Endemic	CCVI
<i>Empidonax traillii brewsteri</i>	Sierra Nevada Mountain Willow Flycatcher	G5T3T4	S1B			R5S			PS
<i>Empidonax traillii extimus</i>	Southwestern Willow Flycatcher	G5T2	S1B	LE	S	E	EB		PS
<i>Falco peregrinus</i>	Peregrine Falcon	G4	S3		S	R4S	SB		PS
<i>Gymnorhinus cyanocephalus</i>	Pinyon Jay	G3	S3		S				PS
<i>Haliaeetus leucocephalus</i>	Bald Eagle	G5	S2B,S4N		S	R4S, R5S	SB		PS
<i>Ixobrychus exilis</i>	Least Bittern	G4G5	S2B		S				PS
<i>Leucosticte atrata</i>	Black Rosy-Finch	G4	S2		S				HV
<i>Leucosticte tephrocotis</i>	Gray-crowned Rosy-Finch	G5	S2		S				HV
<i>Melanerpes lewis</i>	Lewis's Woodpecker	G4	S2B		S				PS
<i>Rallus obsoletus yumanensis</i>	Yuma Ridgway's Rail	G3T3	S1B	LE			EB		PS
<i>Riparia riparia</i>	Bank Swallow	G5	S2B						MV
<i>Setophaga graciae</i>	Grace's Warbler	G5	S2B						PS
<i>Spinus pinus</i>	Pine Siskin	G5	S3						
<i>Spizella atrogularis</i>	Black-chinned Sparrow	G5	S2B						PS
<i>Strix occidentalis occidentalis</i>	California Spotted Owl	G3G4T2T3	S1			R4S, R5S	EB		MV
<i>Toxostoma bendirei</i>	Bendire's Thrasher	G4	S1B		S				PS
<i>Toxostoma lecontei</i>	LeConte's Thrasher	G4	S2		S				PS
<i>Tympanuchus phasianellus columbianus</i>	Columbian Sharp-tailed Grouse	G5T3	S1		S	R4S	GB		MV

Mammals

<i>Aplodontia rufa</i>	mountain beaver	G5	S1						
<i>Brachylagus idahoensis</i>	pygmy rabbit	G4	S3		S	R4S, R5S	GM		EV
<i>Chaetodipus penicillatus</i>	desert pocket mouse	G5	S1S2						MV
<i>Corynorhinus townsendii</i>	Townsend's big-eared bat	G4	S2		S	R4S, R5S	SM		PS
<i>Euderma maculatum</i>	spotted bat	G4	S2		S	R4S	PM		PS
<i>Eumops perotis</i>	western mastiff bat	G4G5	S1		S		PM		
<i>Idionycteris phyllotis</i>	Allen's big-eared bat	G4	S1		S		PM		PS
<i>Lasionycteris noctivagans</i>	silver-haired bat	G3G4	S3		S		PM		PS
<i>Lasiurus cinereus</i>	hoary bat	G3G4	S2S3		S		PM		IL
<i>Lasiurus frantzii</i>	western red bat	G4	S2		S		PM		PS
<i>Lasiurus xanthinus</i>	western yellow bat	G4G5	S1				PM		PS
<i>Lontra canadensis pacifica</i>	northern river otter	G5TNRQ	S2		S		FM		
<i>Lontra canadensis sonora</i>	southwestern otter	G5T1	SH				FM		
<i>Macrotus californicus</i>	California leaf-nosed bat	G3G4	S2		S		PM		PS
<i>Martes caurina</i>	Pacific Marten	G4G5	S2S3		S		PM		PS
<i>Microdipodops megacephalus albiventer</i>	Desert Valley kangaroo mouse	G4T2	S2		S		PM	Y	

Nevada Division of Natural Heritage - At-Risk Plant and Animal Tracking List

Scientific Name	Common Name	G Rank	S Rank	USESA	BLM	USFS	State	Endemic	CCVI
<i>Microdipodops megacephalus nasutus</i>	Fletcher dark kangaroo mouse	G4T2Q	S2		S		PM	Y	
<i>Microdipodops pallidus</i>	pale kangaroo mouse	G3	S2		S		PM		MV
<i>Microtus montanus fucosus</i>	Pahranagat Valley montane vole	G5T2	S1S2		S		PM	Y	PS
<i>Microtus montanus nevadensis</i>	Ash Meadows montane vole	G5TH	SH		S		PM	Y	PS
<i>Myotis lucifugus</i>	little brown myotis	G3G4	S2S3		S		PM		IL
<i>Myotis thysanodes</i>	fringed myotis	G4	S2		S	R5S	PM		IL
<i>Myotis velifer</i>	cave myotis	G4G5	S1		S		PM		PS
<i>Neotamias amoenus celeris</i>	Humboldt yellow-pine chipmunk	G5T1	S2		S		PM	Y	MV
<i>Neotamias palmeri</i>	Palmer's chipmunk	G3	S2				PM	Y	HV
<i>Neotamias umbrinus nevadensis</i>	Hidden Forest Uinta chipmunk	G5TH	SH				PM	Y	MV
<i>Nyctinomops femorosaccus</i>	Pocketed Free-tailed Bat	G5	S1				PM		
<i>Nyctinomops macrotis</i>	big free-tailed bat	G5	S1		S		PM		PS
<i>Ochotona princeps</i>	American pika	G5	S2		S		PM		HV
<i>Sigmodon arizonae</i>	Arizona cotton rat	G5	S1						
<i>Sigmodon arizonae plenus</i>	Colorado River cotton rat	G5T2T3	S1						
<i>Sorex navigator</i>	American water shrew	G5	S2		S				MV
<i>Sorex preblei</i>	Preble's shrew	G4	S1S2		S				PS
<i>Sorex tenellus</i>	Inyo shrew	G4	S2		S				PS
<i>Thomomys bottae abstrusus</i>	Fish Spring pocket gopher	G5T1	S1		S			Y	MV
<i>Thomomys bottae curtatus</i>	San Antonio pocket gopher	G5TH	SH		S			Y	MV
<i>Zapus princeps</i>	western jumping mouse	G5	S2		S		PM		PS

Key to Codes Used by the Nevada Division of Natural Heritage

Note: The Nevada Division of Natural Heritage makes every effort to keep other agency statuses current; however we recommend you consult the agency to ensure you have the most current information.

NatureServe (Natural Heritage) Conservation Status Rank Definitions (i.e., G and S Rank)	
Rank Abbreviation	Definition – see http://www.natureserve.org/explorer/ranking.htm for more detailed information.
G	Refers to the global population of a species.
S	Refers to the subnational (state) population of a species, subspecies, or variety.
T	Refers to the subspecific or variety taxonomic level (used in conjunction with Grank); uses numeric ranks 1-5 in the same way that G and S ranks are applied.
X	Presumed Extinct or extirpated (Srank) – Not located despite intensive searches and virtually no likelihood of rediscovery.
H	Possibly Extinct – Known from only historical occurrences but still some hope of rediscovery.
1	Critically Imperiled – At very high risk of extirpation in the jurisdiction due to very restricted range, very few populations or occurrences, very steep declines, severe threats, or other factors.
2	Imperiled – At high risk of extirpation in the jurisdiction due to restricted range, few populations or occurrences, steep declines, severe threats, or other factors.
3	Vulnerable – At moderate risk of extirpation in the jurisdiction due to a fairly restricted range, relatively few populations or occurrences, recent and widespread declines, threats, or other factors.
4	Apparently Secure – At fairly low risk of extirpation in the jurisdiction due to an extensive range and/or many populations or occurrences, but with possible cause for some concern as a result of local recent declines, threats, or other factors.
5	Secure – At very low or no risk of extirpation in the jurisdiction due to a very extensive range, abundant populations or occurrences, with little to no concern from declines or threats.
S#S#	Range Rank – A numeric range rank (e.g., S2S3 or S1S3) is used to indicate uncertainty about the exact status of a taxon. Ranges cannot skip more than two ranks (e.g., SU is used rather than S1S4). A range rank could also be applied at the global scale as well (e.g., G2G3).
NR	Taxon Not Ranked – rank not yet assessed.
NA	Conservation status rank is Not Applicable because element is not a suitable target for conservation activities (often used for non-native species or hybrids).
U	Unrankable – Currently unrankable due to lack of information or due to substantially conflicting information about status or trends.
Q	Questionable taxonomy – taxonomic distinctiveness of the entity at the current level is questionable or currently being reviewed; resolution of this uncertainty may result in change from a species to a subspecies, variety or hybrid, or the inclusion of this taxon in another taxon, with the resulting taxon having a lower-priority conservation status.
B	Breeding – Conservation status refers to the breeding population of the element in the nation or state/province.
N	Non-breeding – Conservation status refers to the non-breeding population of the element in the nation or state/province (e.g., wintering bird populations).
M	Migrant – Migrant species occurring regularly on migration at particular staging areas or concentration spots where the species might warrant conservation attention. Conservation status refers to the aggregating transient population of the species in the nation or state/province.
U.S. Fish and Wildlife Service (USFWS) Endangered Species Act Listing	
NDNH Abbreviation	Status Under the U.S. Endangered Species Act (ESA)
LE	Listed Endangered – in danger of extinction in all or a significant portion of its range.
LT	Listed Threatened – likely to be classified as Endangered in the foreseeable future if threats continue.
PE or PT	Proposed as Endangered or Threatened
C	Candidate for listing as Threatened or Endangered

SC	Species of Concern (former Category 1 Candidate or proposed species)
PDL	Proposed for delisting
SAE or SAT	Listed Endangered or Threatened because of similarity of appearance
PSAE or PSAT	Proposed Endangered or Threatened because of similarity of appearance
XE	Essential experimental population
XN	Non-essential experimental population
U.S. Bureau of Land Management (BLM) Status	
NDNH Abbreviation	BLM Status
S	Sensitive Species – Species designated Sensitive by State Director of Nevada BLM.
C	California BLM state status (sensitive)
U.S. Forest Service (FS) Status	
NDNH Abbreviation	FS Status
E	Endangered – as designated by the Endangered Species Act
T	Threatened – as designated by the Endangered Species Act
R4S	Region 4 (Humboldt-Toiyabe National Forest) Sensitive
R5S	Region 5 (Inyo National Forest or Lake Tahoe Basin Management Unit) Sensitive or Watch status
R5SP	Region 5 (Inyo National Forest [includes Lake Tahoe Basin Management Unit]) proposed Sensitive or Watch status
State of Nevada Protection and Designations (NAC 503)	
NDNH Abbreviation	State Designation
EM	Nevada State Emblem
CE	Critically Endangered Plant
CE#	Recommended for listing as Critically Endangered Plant
CY	Protected as a cactus, yucca, or Christmas tree
GF	Game Fish (NAC 503.060)
PF	Protected Fish (NAC 503.065.1)
SF	Sensitive Fish (NAC 503.067)
TF	Threatened Fish (NAC 503.065.3)
EF	Endangered Fish (NAC 503.065.2)
PA	Protected Amphibian (NAC 503.075.2)
PR	Protected Reptile (NAC 503.080.1)
TR	Threatened Reptile (NAC 503.080.2)
UB	Unprotected Birds (NAC 503.055)
GB	Game Bird (NAC 503.045)
PB	Protected Birds (NAC 503.050.1)
SB	Sensitive Birds (NAC 503.050.3)
EB	Endangered Birds (NAC 503.050.2)
UM	Unprotected Mammal (NAC 503.035)
GM	Game Mammal (NAC 503.020)
FM	Fur-bearing Mammal (NAC 503..025)
PM	Protected Mammal (NAC 503.030.1)
SM	Sensitive Mammal (NAC 503.030.3)
TM	Threatened Mammal (NAC 503.030.2)
Endemic to Nevada Status	
Abbreviation	Definition
Y	Found naturally only in the State of Nevada
P	Probable endemic of Nevada

Climate Change Vulnerability Index (CCVI)

NDNH Abbreviation	CCVI score as assessed by the Nevada Division of Natural Heritage for taxon within the state of Nevada
EV	Extremely Vulnerable: Abundance and/or range extent within Nevada extremely likely to substantially decrease or disappear by 2050.
HV	Highly Vulnerable – Abundance and/or range extent within Nevada likely to decrease significantly by 2050.
MV	Moderately Vulnerable- Abundance and/or range extent with Nevada assessed likely to decrease by 2050.
PS	Presumed Stable – Available evidence does not suggest that abundance and/or range extent within Nevada will change.
IL	Increase Likely – Available evidence suggests that abundance and/or range extent within Nevada is likely to increase by 2050.
IE	Insufficient Evidence – Available information about a species' vulnerability is inadequate to calculate an Index score.