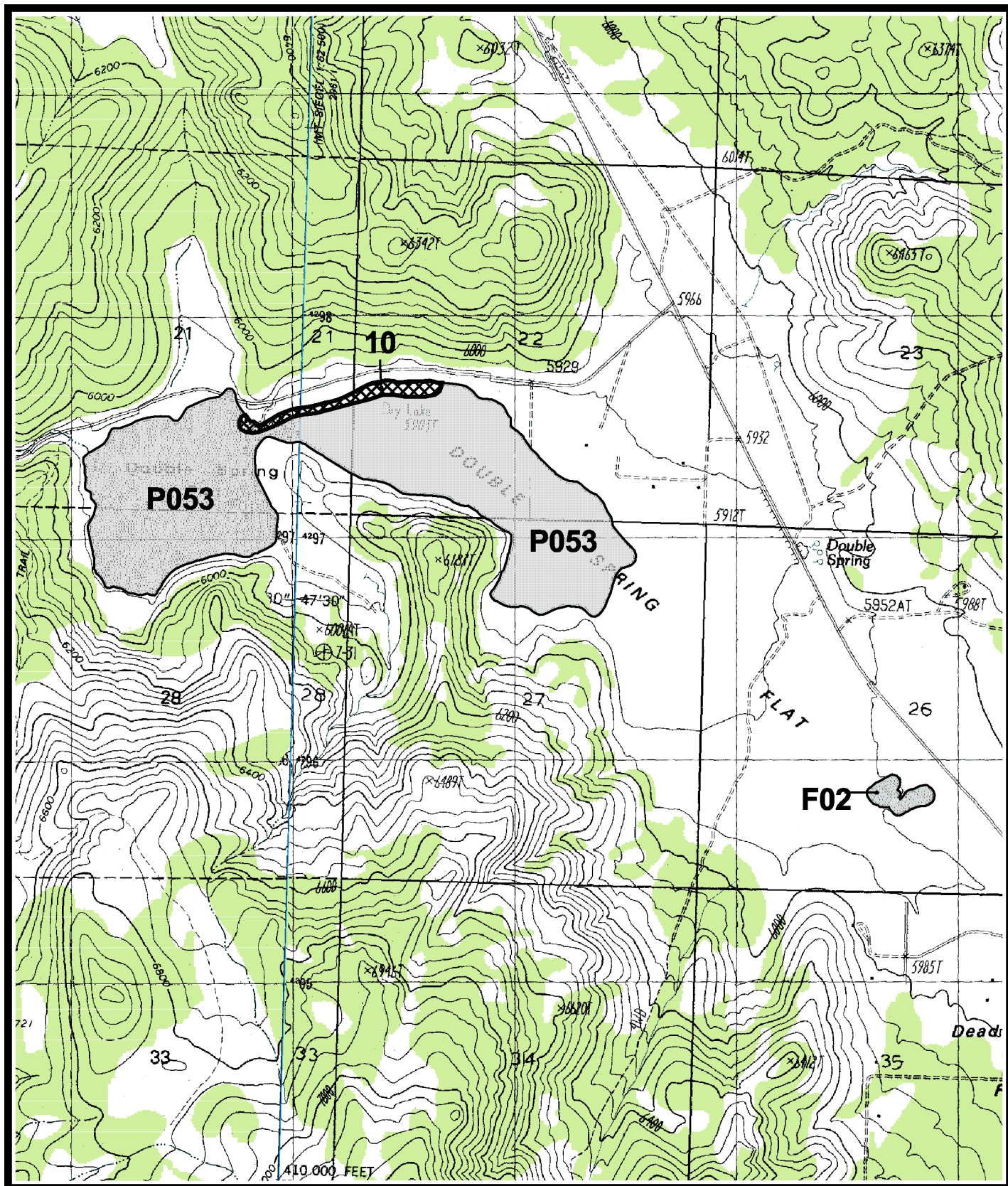
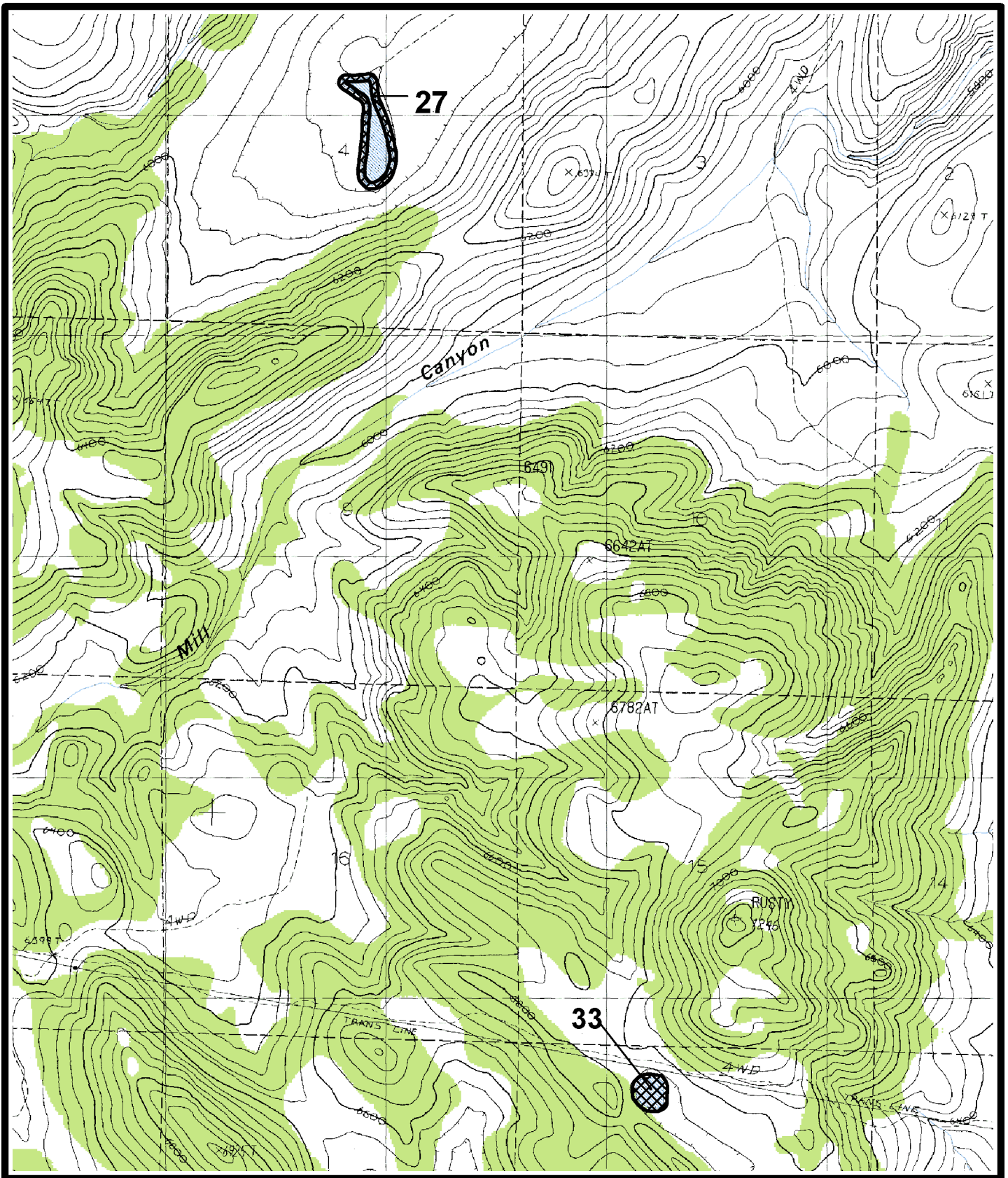


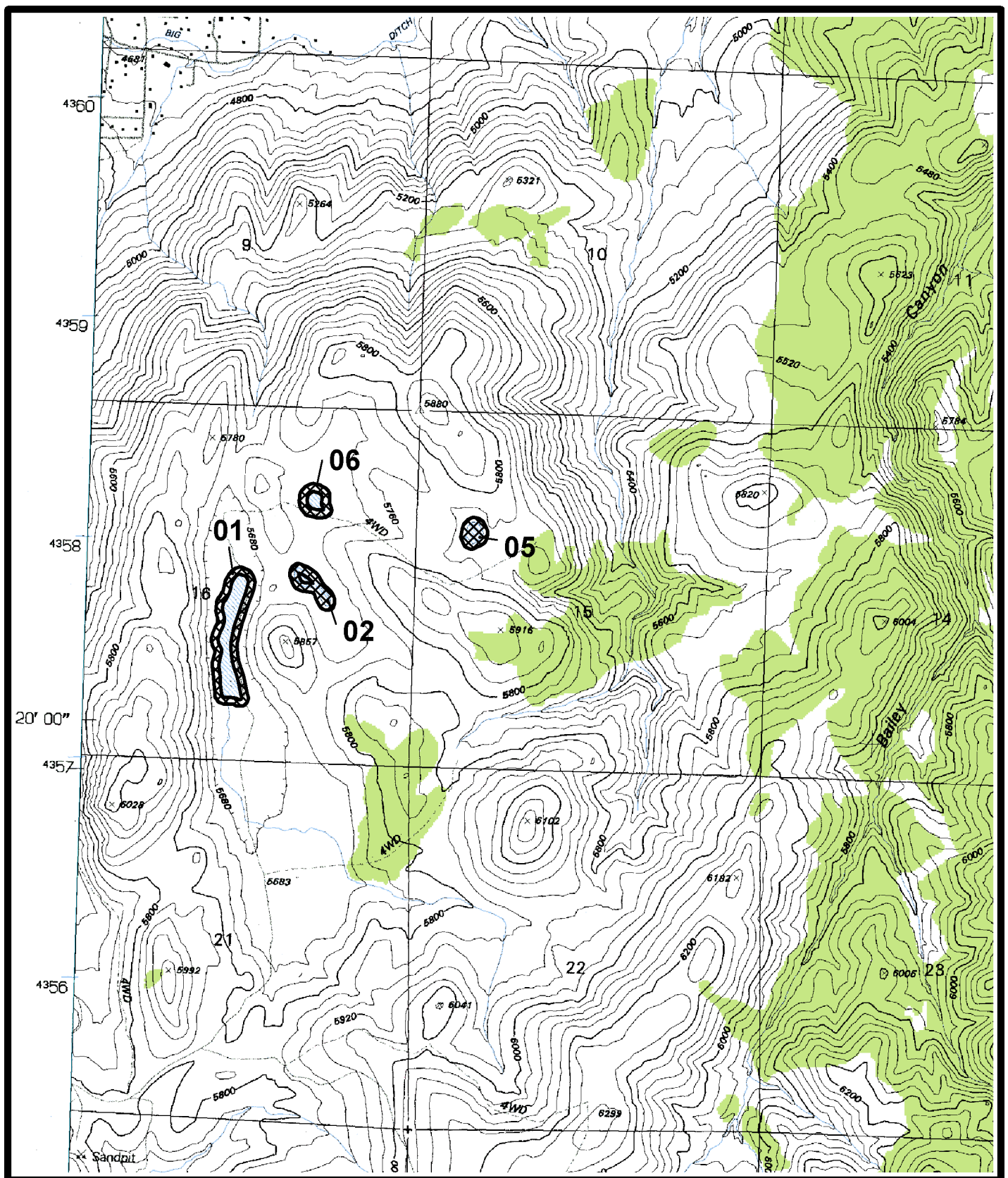
Map 11. Sweetwater Summit area. *Polycytenium williamsiae* estimated sites 11, 16, and potential site P052, Nye Canyon 1:24,000 quadrangle, Lyon County, Nevada.



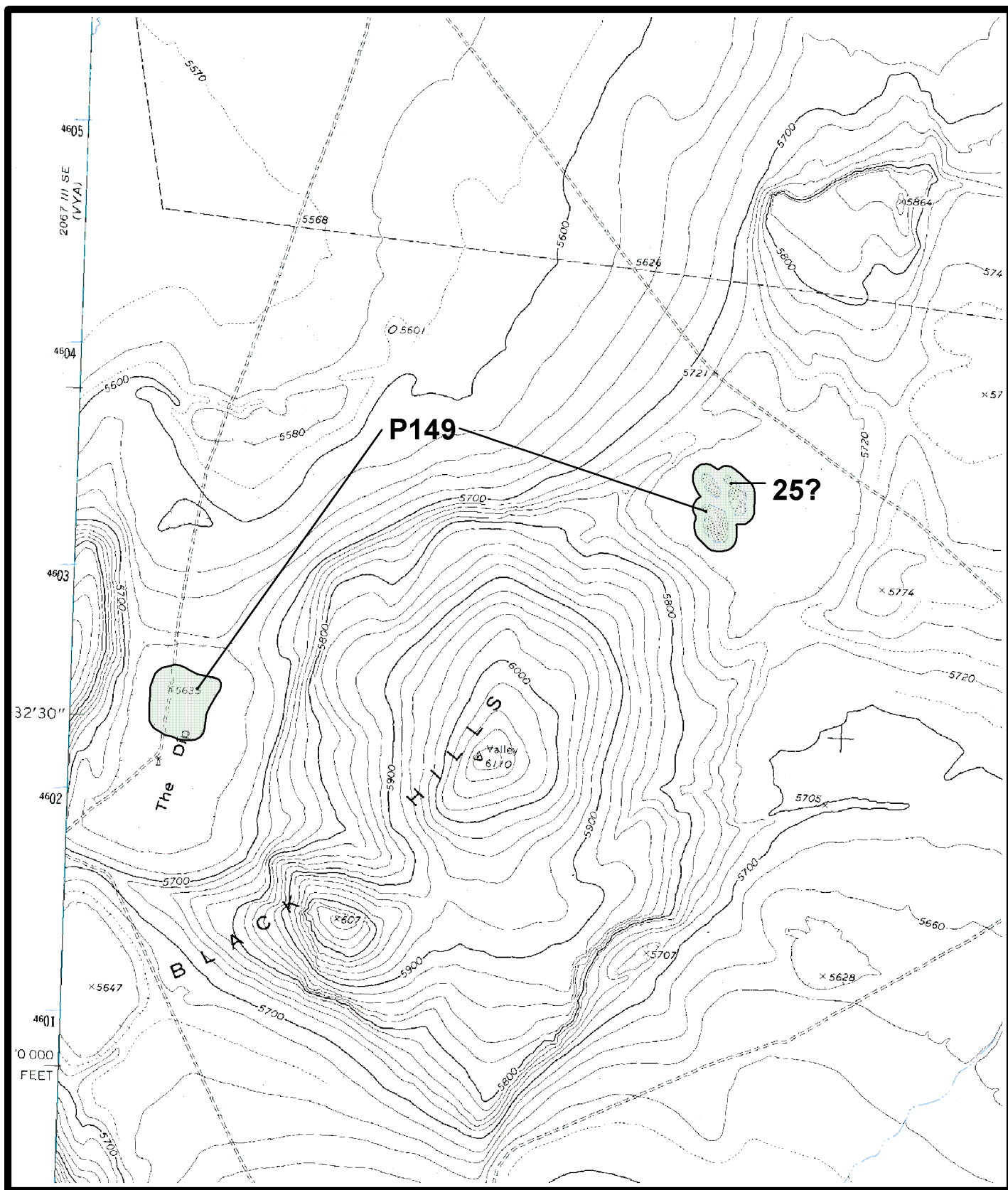
Map 12. Double Spring Flat area. *Polycytenium williamsiae* estimated site 10 and potential site P053, and *Polycytenium fremontii* estimated site F02, Double Spring and Carters Station 1:24,000 quadrangles, Douglas County, Nevada.



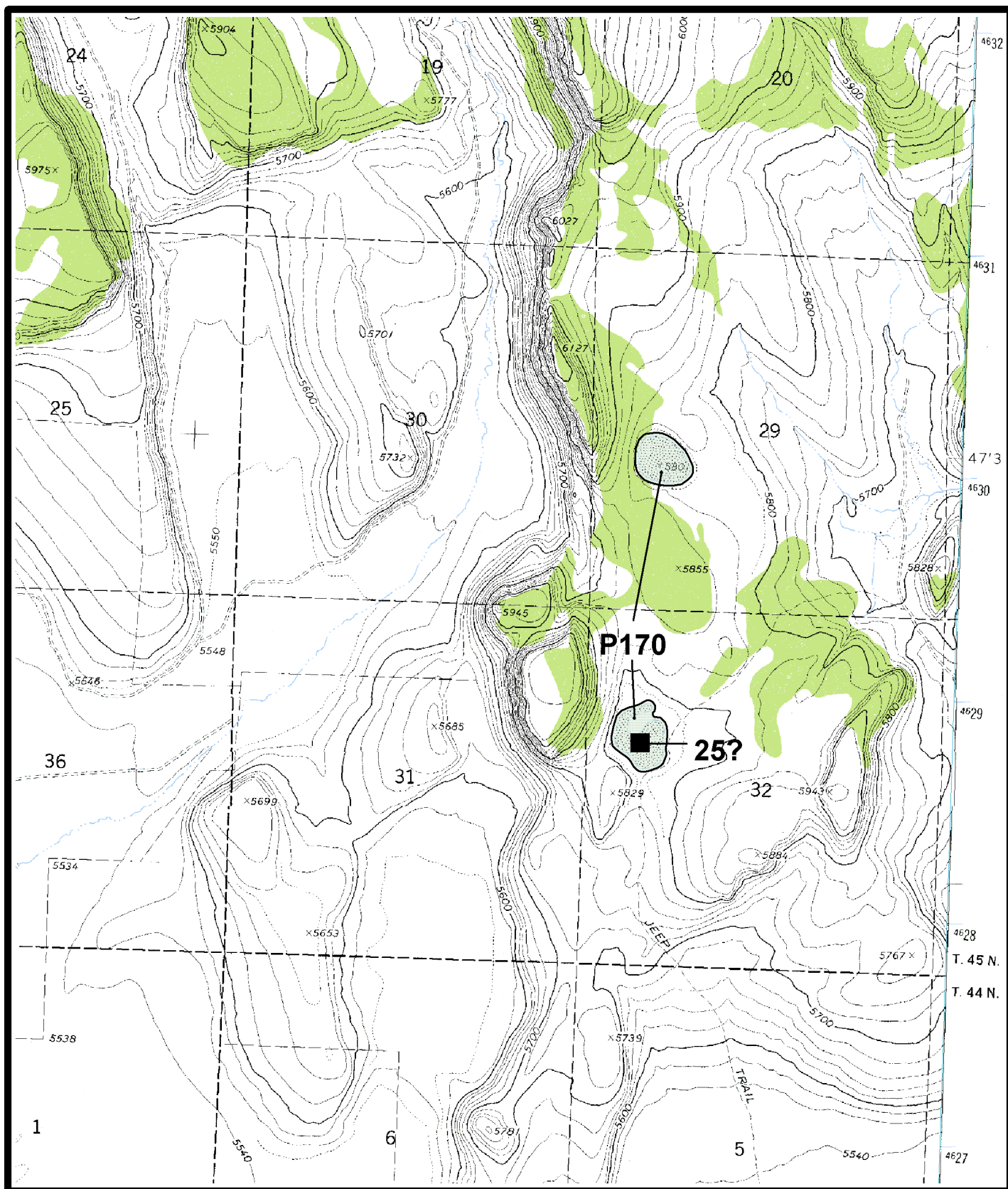
Map 13. Mill Canyon area, Pine Nut Mountains. *Polycstenium williamsiae* estimated sites 27 and 33, Como 1:24,000 quadrangle, Lyon County, Nevada.



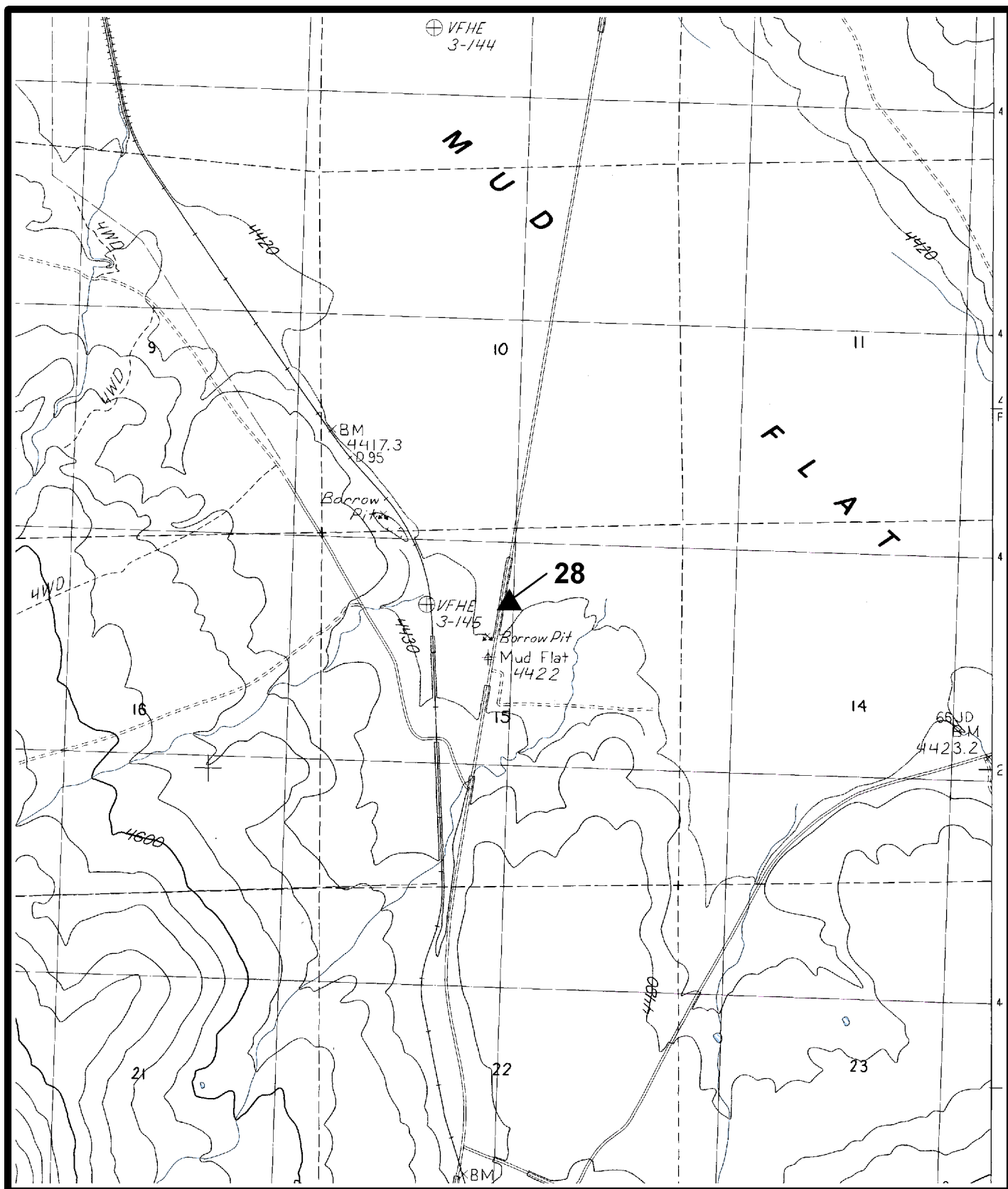
Map 14. Virginia Range area. *Polycytenium williamsiae* estimated sites 01-02, 05-06, Virginia City 1:24,000 quadrangle, Washoe County, Nevada.



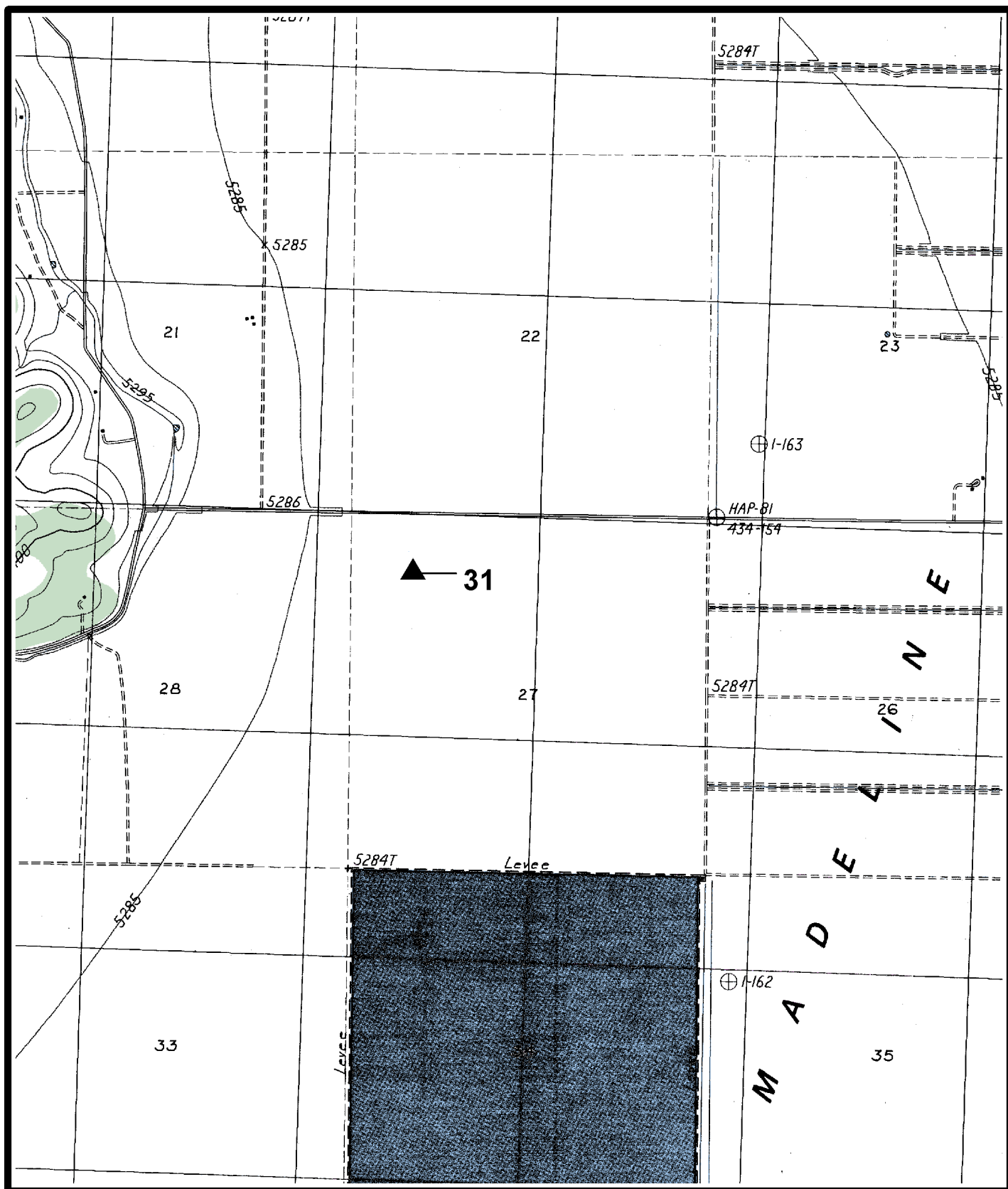
Map 15. The Dip area. *Polycnemum williamsiae* possible site 25, and potential site P149, Painted Point 1:24,000 quadrangle, Washoe County, Nevada.



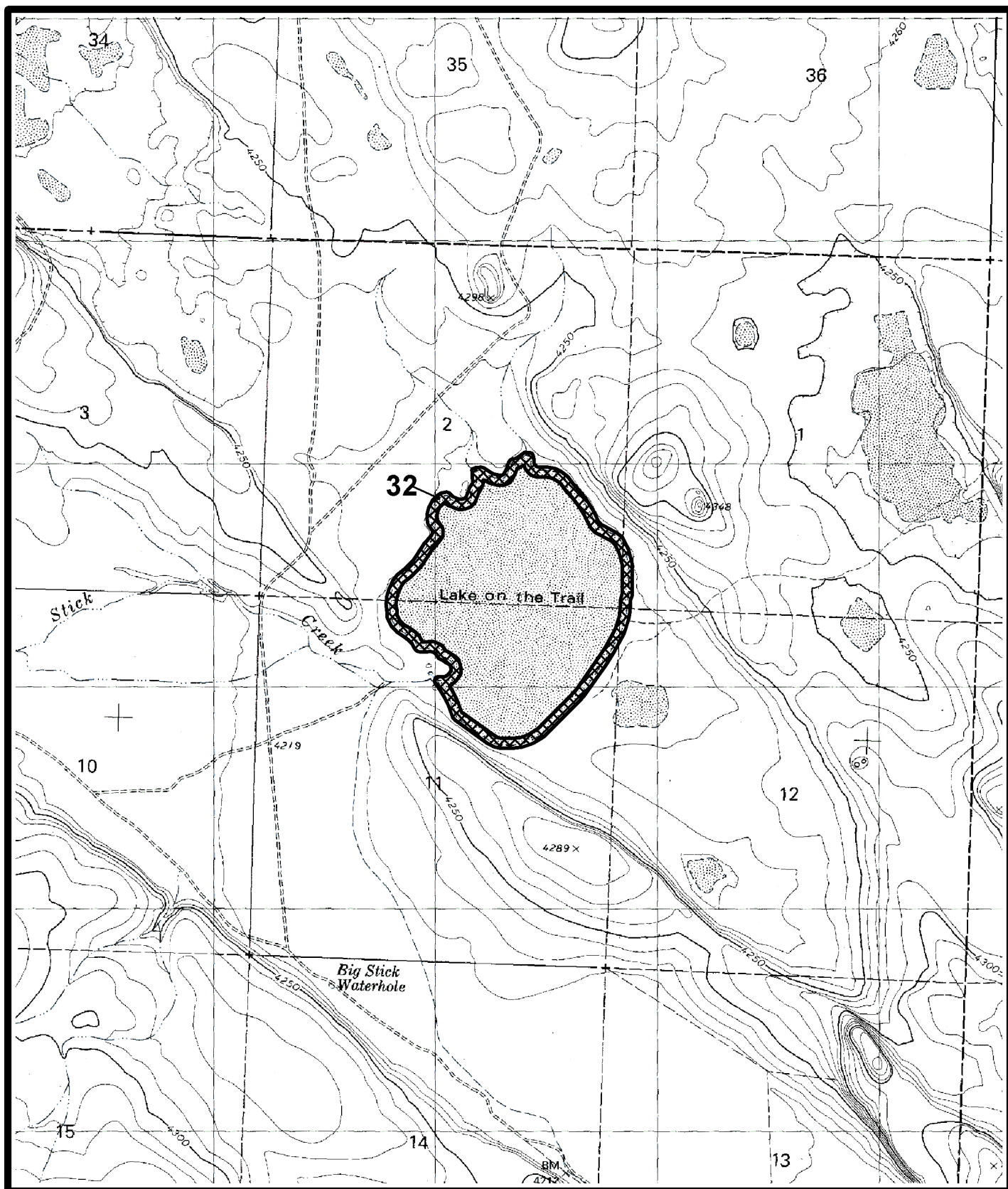
Map 16. Long Valley area. *Polyctenium williamsiae* possible site 25, and potential site P170, Mosquito Valley 1:24,000 quadrangle, Washoe County, Nevada.



Map 17. Susanville northeast area. *Polycetenium williamsiae* approximate site 28, Shaffer Mountain 1:24,000 quadrangle, Lassen County, California.



Map 18. Madeline Plains area. *Polycytenium williamsiae* estimated site 31, Anderson Mountain 1:24,000 quadrangle, Lassen County, California.



Map 19. Lake-on-the-Trail area. *Polycytenium williamsiae* estimated sites 32, Lake on the Trail 1:24,000 quadrangle, Harney County, Oregon.