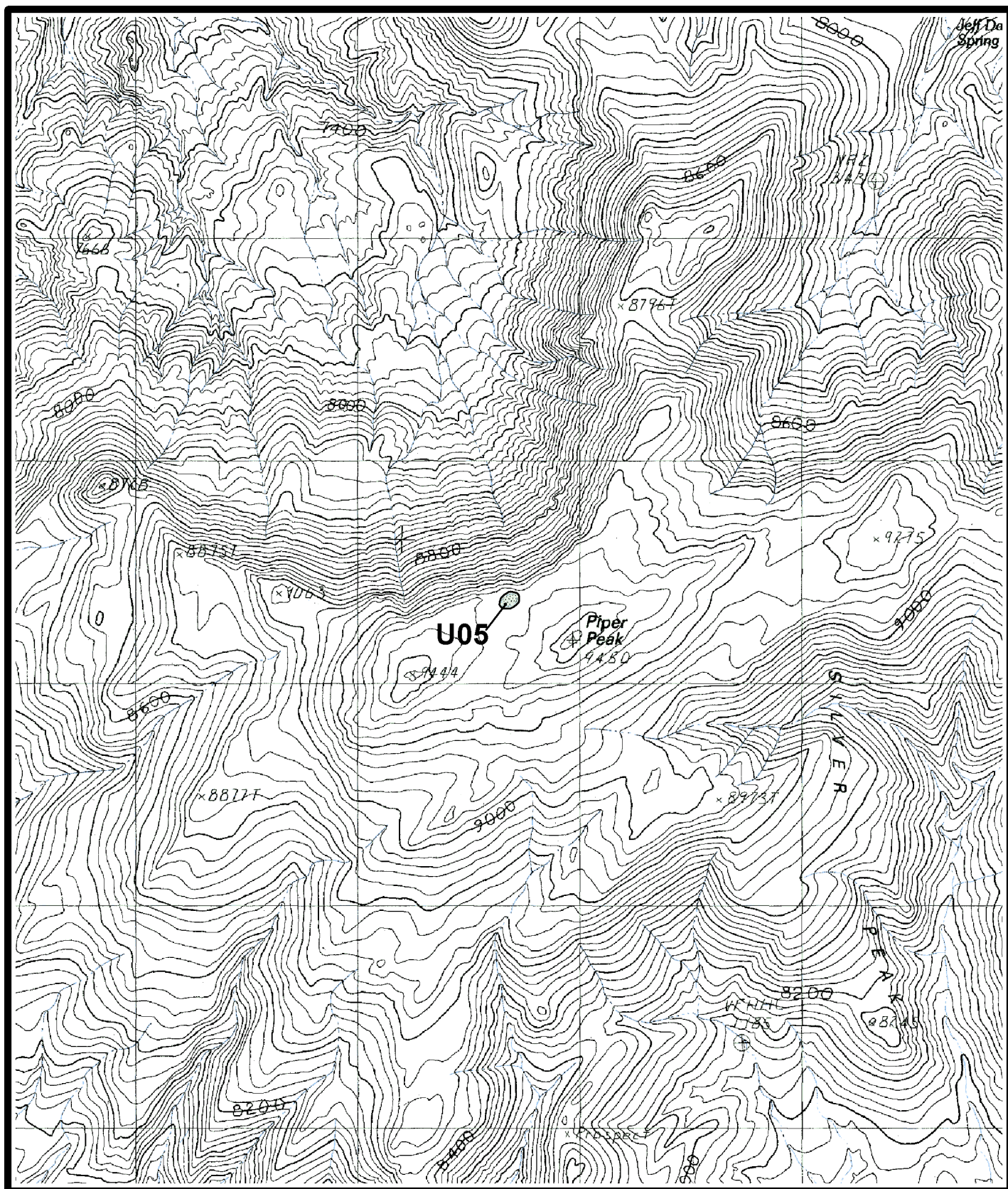
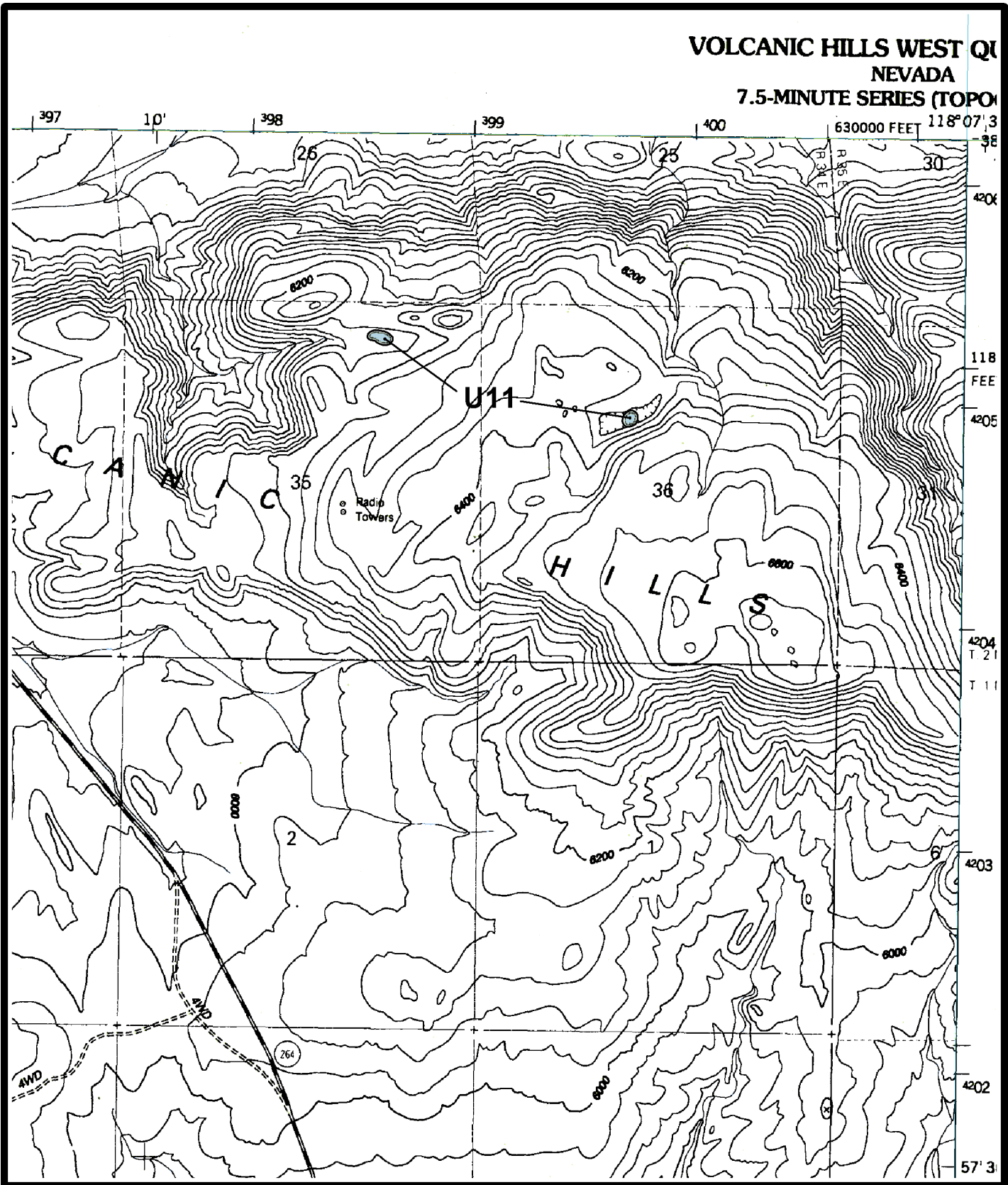


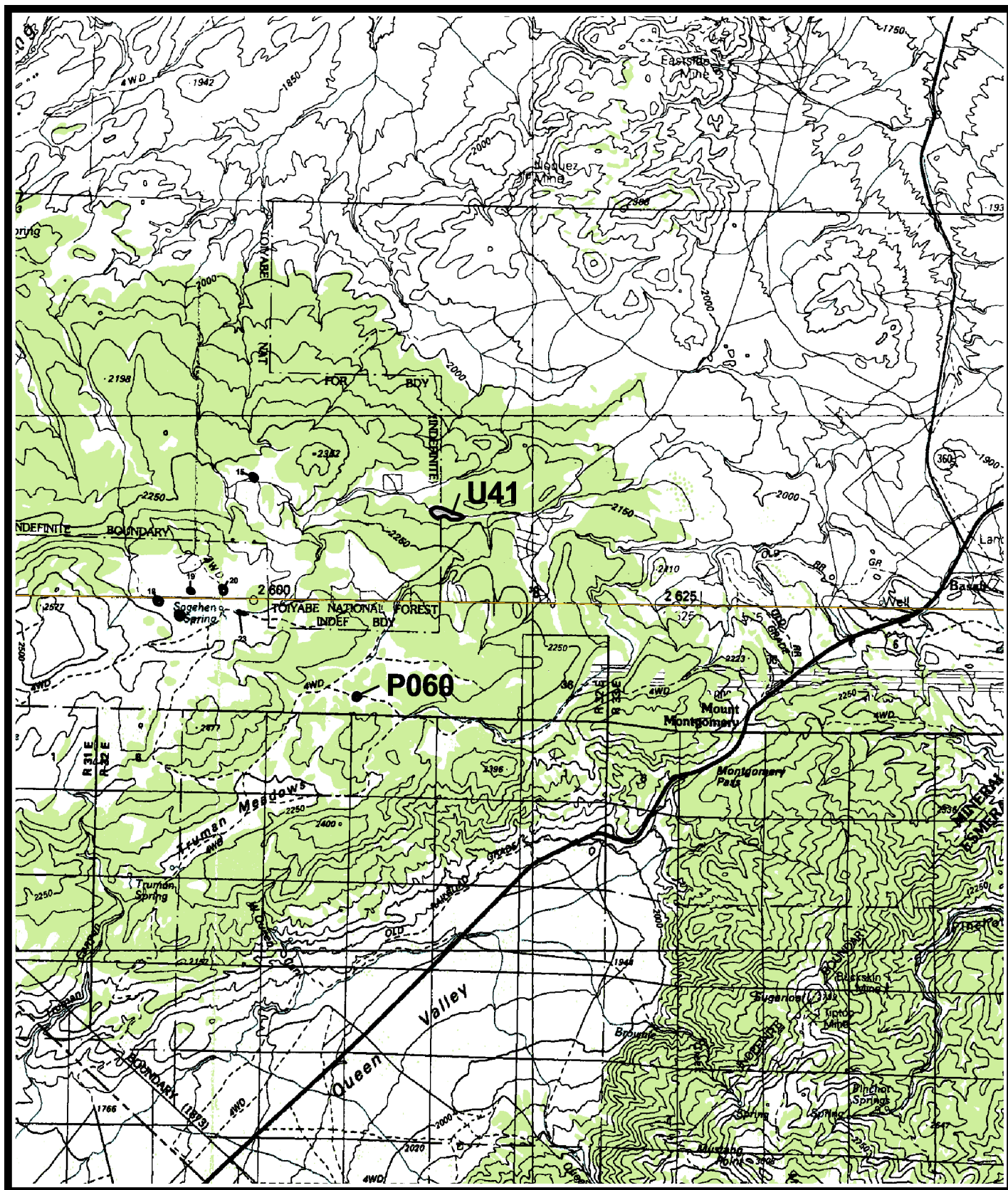
**Map 20.** Little Fish Lake area. *Polycatenium williamsiae* unoccupied sites U12-U14 and potential sites P002-P003, Mount Jefferson 1:100,000 quadrangle, Nye County, Nevada.



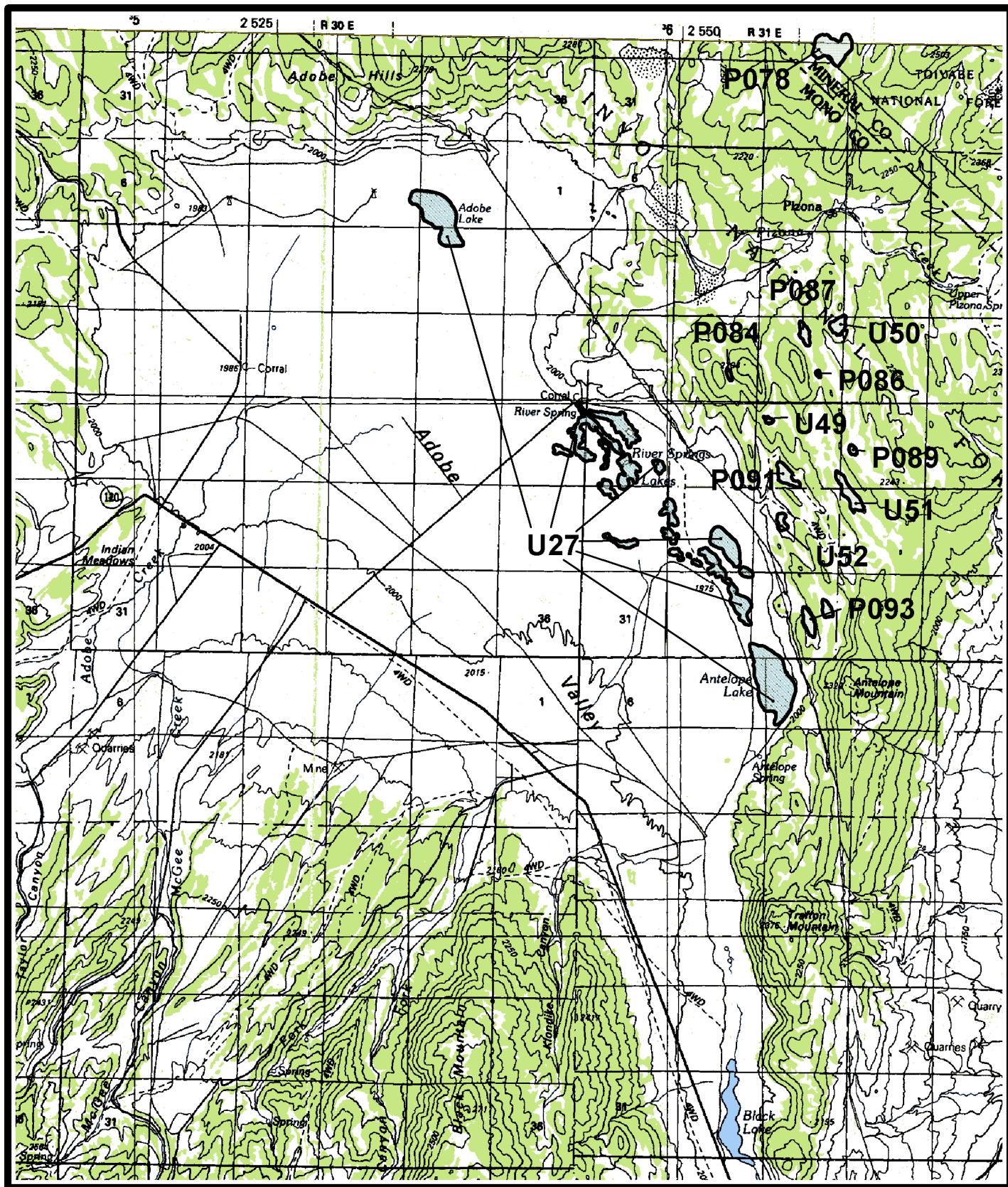
**Map 21. Piper Peak area. *Polycstenium williamsiae* unoccupied site U05, Piper Peak 1:24,000 quadrangle, Esmeralda County, Nevada.**



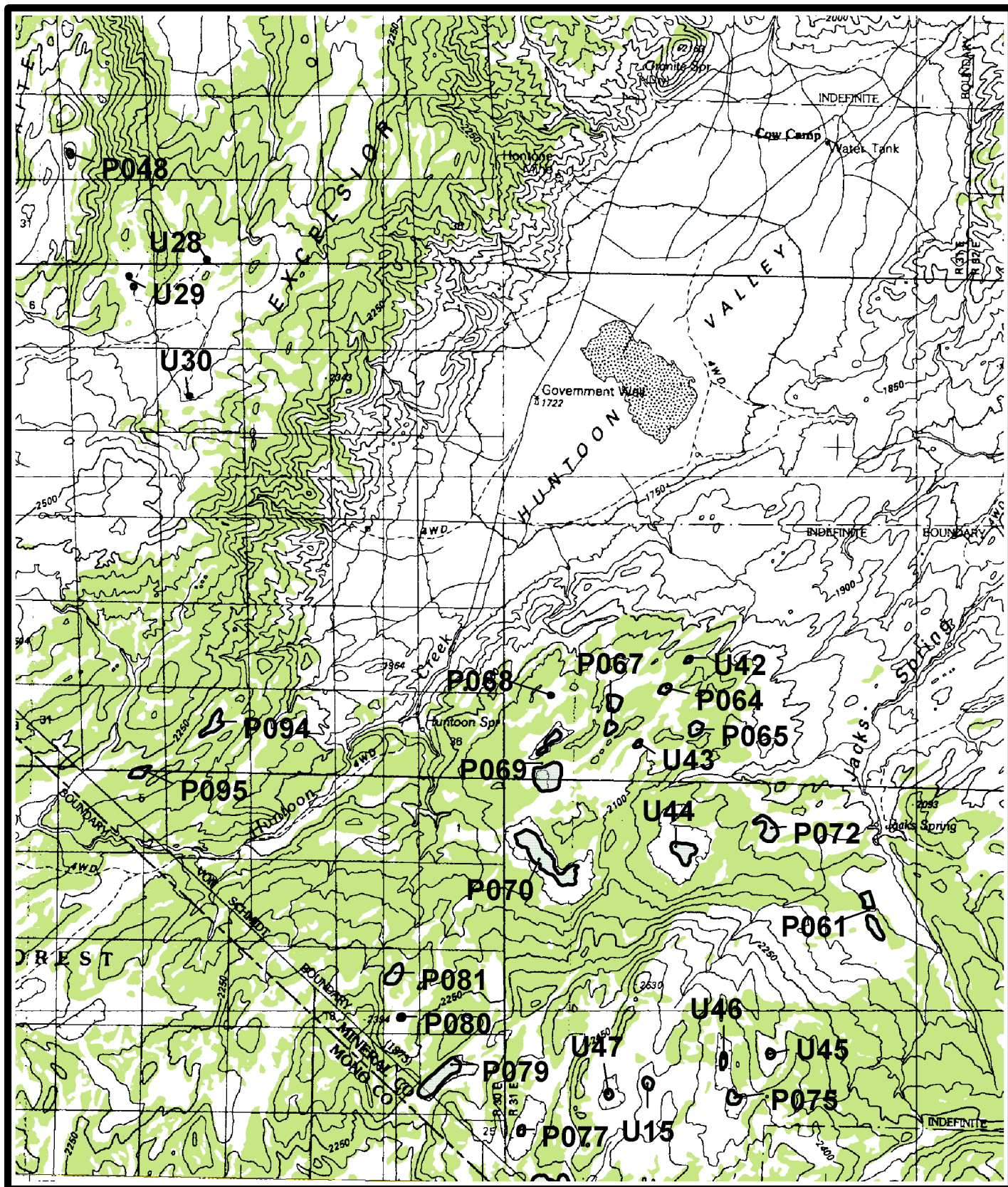
Map 22. Volcanic Hills area. *Polycytenium williamsiae* unoccupied site U11, Volcanic Hills West 1:24,000 quadrangle, Esmeralda County, Nevada.



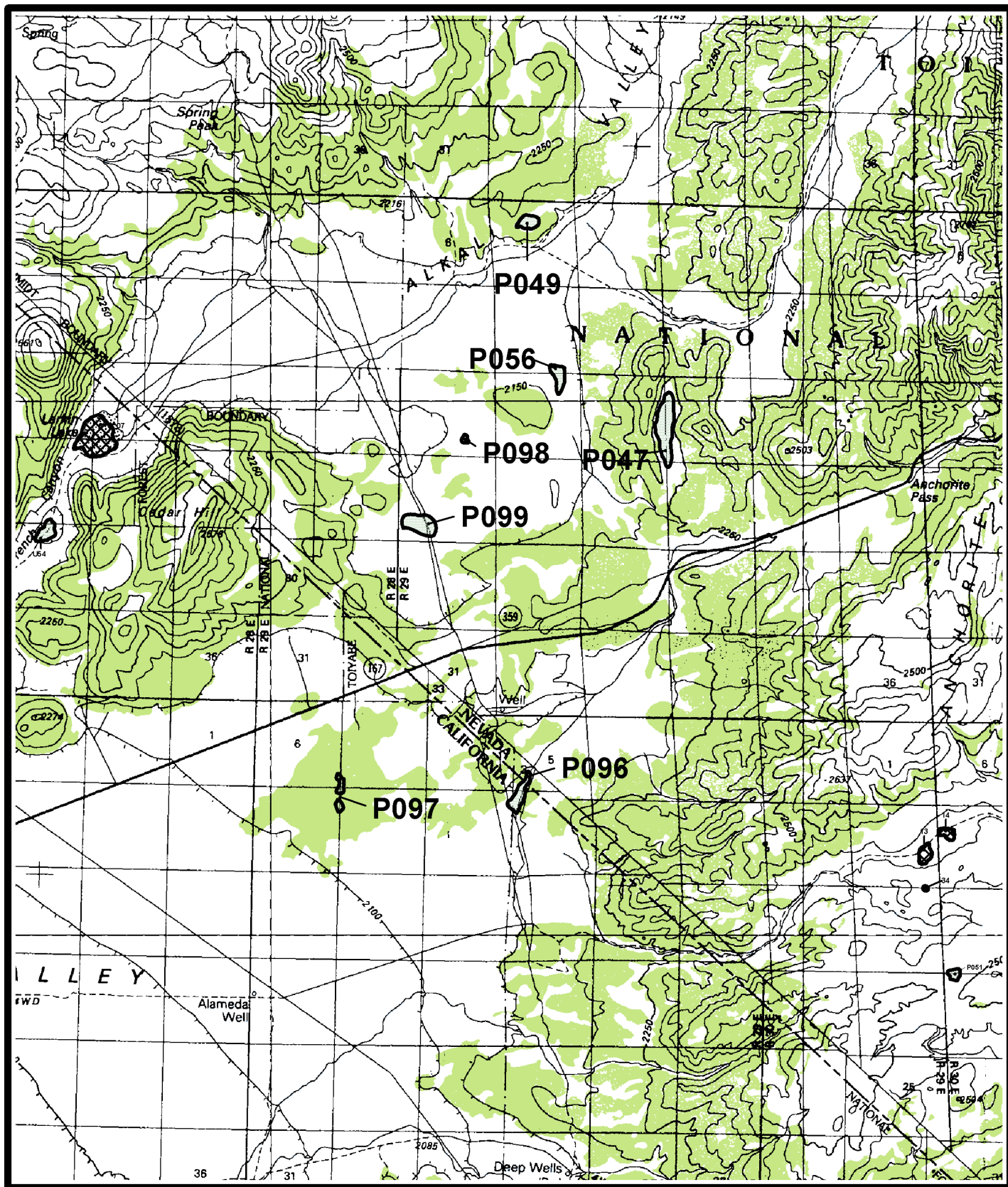
Map 23. Montgomery Pass area. *Polyctenium williamsiae* unoccupied site U41 and potential site P060, Benton Range and Excelsior Mountains 1:100,000 quadrangles, Mineral County, Nevada.



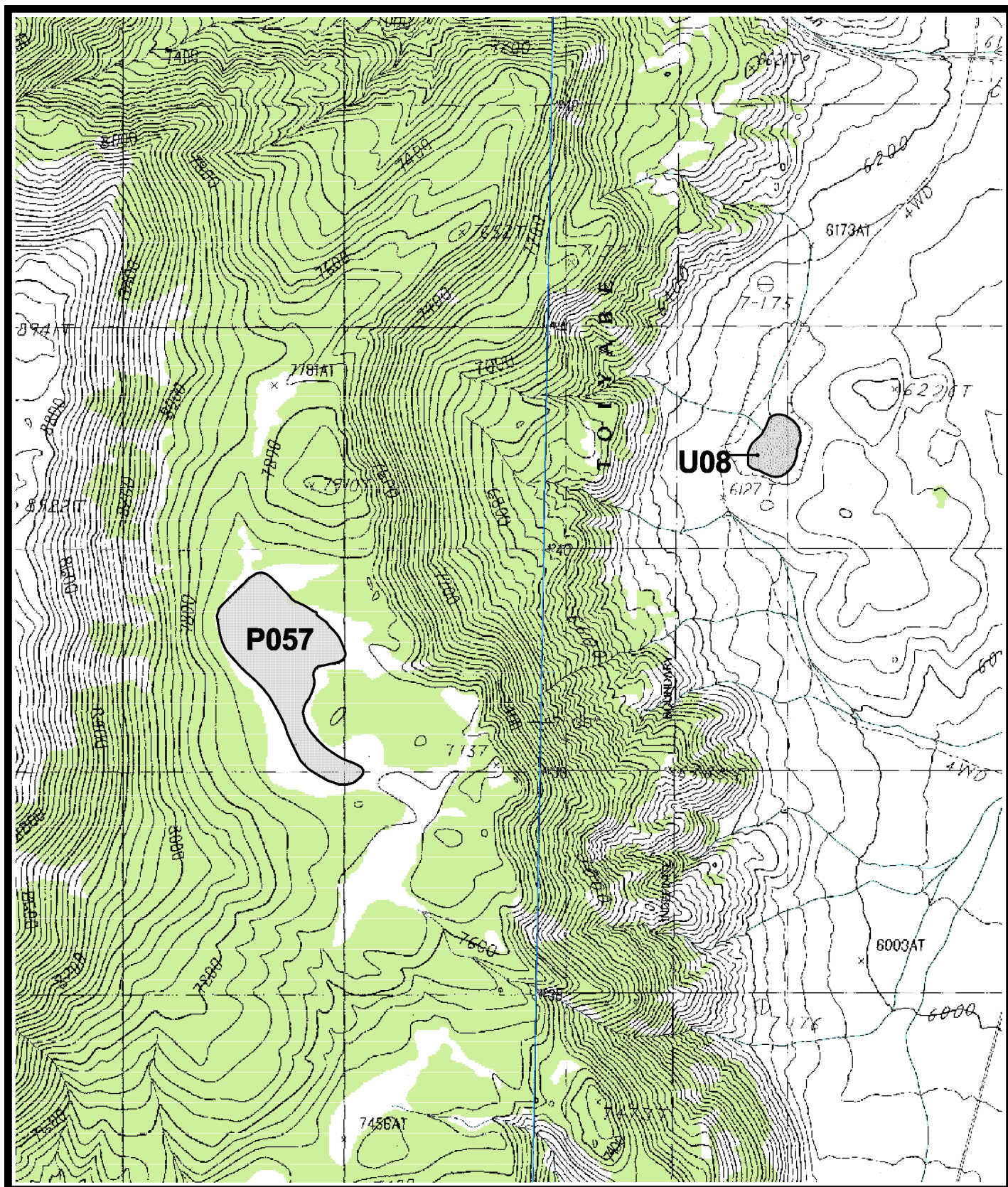
**Map 24.** Adobe Valley area. *Polytenuum williamsiae* unoccupied sites U27, U49-U52, and potential sites P078, P084, P086-P087, P089, P091, and P093, Benton Range 1:100,000 quadrangle, Mono County, California, and Mineral County, Nevada.



Map 25. Huntoon Valley area. *Polycatenium williamsiae* unoccupied sites U15, U28-U30, U42-U47, U53, and potential sites P048, P061, P064-P065, P067-P070, P072, P075, P077, P079-P081, and P094, Excelsior Mountains 1:100,000 quadrangle, Mineral County, Nevada.

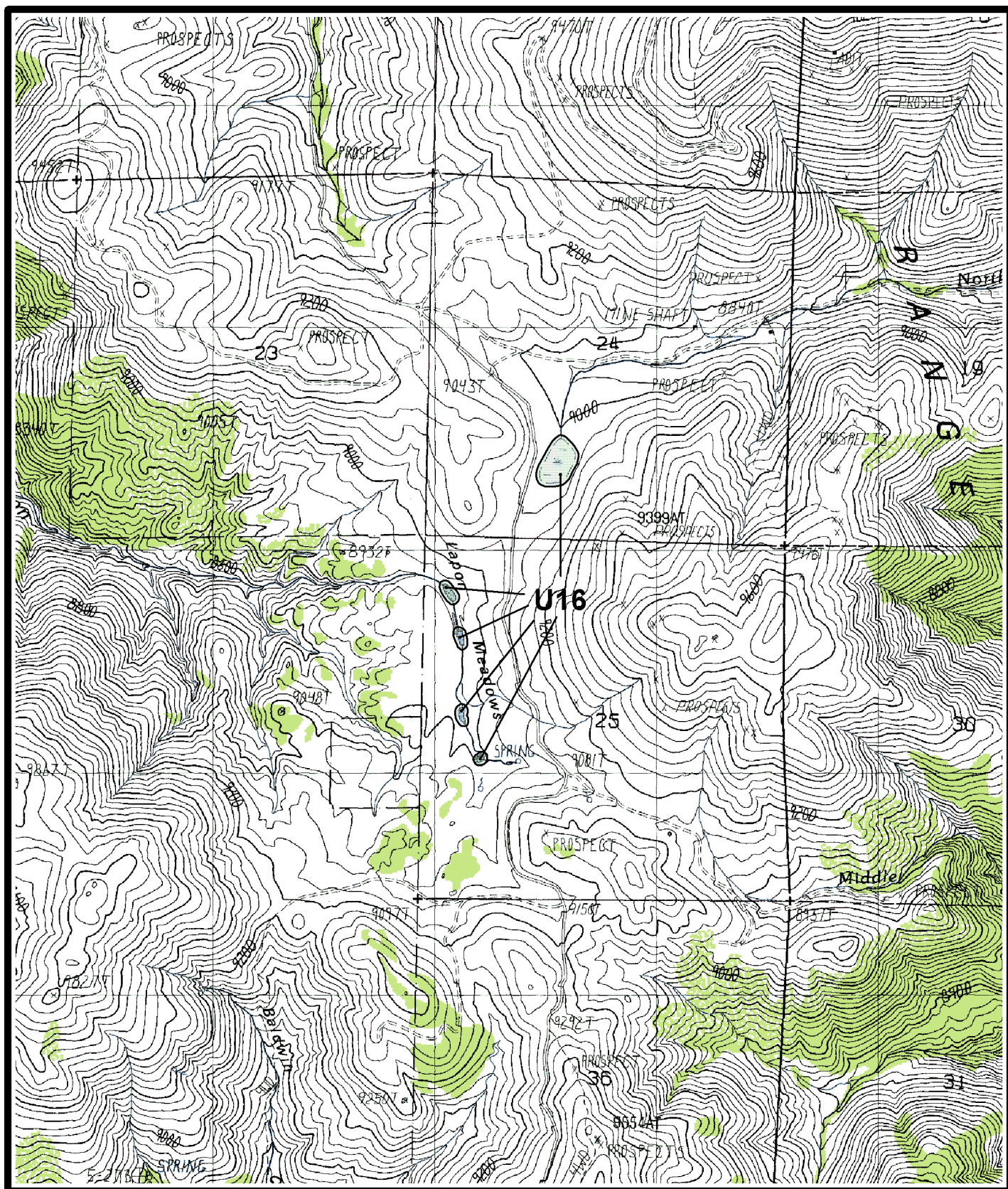


**Map 26.** Alkali Valley area. *Polycytenium williamsiae* potential sites P047, P049, P056, P096-P099, Excelsior Mountains 1:100,000 quadrangle, Mono County, California, and Mineral County, Nevada.



**Map 27. Whisky Flat area. *Polyteneum williamsiae* unoccupied site U08 and potential site P057, Powell Mountain and Whisky Flat 1:24,000 quadrangles, Mineral County, Nevada.**





**Map 28. Lapon Meadows area. *Polycatenium williamsiae* unoccupied site U16, Mount Grant 1:24,000 quadrangle, Mineral County, Nevada.**