

LECTOTYPIFICATION OF *PHOEBE PUWENENSIS* (LAURACEAE)

YONG YANG^{1,2} AND DAVID E. BOUFFORD³

Abstract. The type collection of *Phoebe puwenensis* consists of 18 specimens in the herbarium of Nanjing Forestry University (NF). Of those specimens, *W. C. Cheng 30001* (NF2004054), which bears the notation “sp. nov.” and also a handwritten diagnosis, is chosen as the lectotype.

Keywords: Lauraceae, lectotypification, nomenclature, *Phoebe puwenensis*

Cheng (Cheng et al., 1963) described and validly published *Phoebe puwenensis* W. C. Cheng from southern Yunnan, China. The name and the species are accepted in both *Flora Reipublicae Popularis Sinicae* (Lee and Wei, 1982) and the *Flora of China* (Wei and van der Werff, 2009). In publishing *Phoebe puwenensis* Cheng (1961) designated *W. C. Cheng 30001* in the herbarium of Nanjing Forestry College (now University) (NF) as the type. We found that instead of a single holotype, however, there are 18 specimens of the type collection in the herbarium of Nanjing Forestry University. Because no single specimen was designated as the holotype, following the *Shenzhen Code* (Turland et al., 2018), the name has to be lectotypified with one of them. Among the 18 specimens, four (NF2004049, NF2004050, NF2004053 and

NF2004054) have an annotation label by W. C. Cheng dated 16 March 1958 with the inscription “sp. nov.” According to annotations by C. S. Chao in October, 1980, the remaining 14 specimens were also verified as *P. puwenensis*. The four specimens annotated by W. C. Cheng, however, should be considered as the original materials studied by Cheng. Among the four specimens, specimen NF2004054 (Fig. 1) bears an annotation label with not only “sp. nov.,” but also with a short, handwritten diagnosis in Chinese that distinguishes *P. puwenensis* from *P. sheareri* (Hemsl.) Gamble. We believe that this specimen was not only studied by Cheng, but is the specimen that he intended to designate as the holotype. As a result, we lectotypify the name *P. puwenensis* with *W. C. Cheng 30001*, NF2004054 (Fig. 1).

TYPIFICATION

Phoebe puwenensis W. C. Cheng, *Sci. Silv. Sin.* 8(1): 3. 1963.

TYPE: CHINA. Yunnan: Xishuangbanna, Puwen, in evergreen forests, alt. ca. 800 m, 1 April 1957, *W. C. Cheng 30001* (Lectotype, designated here: NF2004054 (Fig. 1);

isotypes: NF2004037, NF2004038, NF2004039, NF2004040, NF2004041, NF2004042, NF2004043, NF2004044, NF2004045, NF2004046, NF2004047, NF2004048, NF2004049, NF2004050, NF2004051, NF2004052, NF2004053).

DISCUSSION

Although *Phoebe puwenensis* was earlier described as *Phoebe sheareri* (Hemsl.) Gamble var. *longepaniculata* H. Liu (1934), based on *A. Henry 12922* (Holotype: P; isotype: NY) from Simao (now Pu'er Shi), Yunnan, China, and cited by Cheng et al. (1963) under *P. puwenensis*, names

outside of their rank have no priority (*Shenzhen Code*, Art. 11.2, Turland et al., 2018). The name *P. sheareri* var. *longepaniculata* H. Liu is therefore a heterotypic synonym of *P. puwenensis*.

LITERATURE CITED

LIU, H. 1934. *Lauracées de Chine et d'Indochine*. Hermann & Cie, Paris.
CHENG, W. C., S. Y. CHANG, T. HONG, C. D. CHU, AND C. S. CHAO. 1963. Species novae et nomines emendata arborum utilium Chinae. *Sci. Silv. Sin.* 8: 1–14.
LEE, S. K., AND F. N. WEI. 1982. *Phoebe* Nees. Pages 89–119 in H. W. LI, ED., *Flora Reipublicae Popularis Sinicae*, Vol. 31. Science Press, Beijing.
TURLAND, N. J., J. H. WIERSEMA, F. R. BARRIE, W. GREUTER, D. L. HAWKSWORTH, P. S. HERENDEEN, S. KNAPP, W. H. KUSBER, D. Z. LI, K. MARHOLD, T. W. MAY, J. MCNEILL, A. M. MONRO,

J. PRADO, M. J. PRICE, AND G. F. SMITH. 2018. *International Code of Nomenclature for Algae, Fungi, and Plants (Shenzhen Code) Adopted by the Nineteenth International Botanical Congress Shenzhen, China, July 2017*. Regnum Vegetabile 159. Koeltz Botanical Books, Glashütten. DOI <https://doi.org/10.12705/Code.2018>
WEI, F. N., AND H. VAN DER WERFF. 2009. *Phoebe* Nees. Pages 18–200 in Z. Y. WU, P. R. RAVEN, AND D. Y. HONG, ED., *Flora of China*, Vol. 7. Science Press, Beijing and Missouri Botanical Garden Press, St. Louis.

An image of the lectotype collection of *W. C. Cheng* (Fig. 1), along with images of all the isotypes, is on the website of the Chinese Virtual Herbarium (CVH; <http://www.cvh.ac.cn/>). This study was supported by the National Natural Science Foundation of China [grant nos. 31970205 and 31770211] and *Metasequoia* funding from Nanjing Forestry University.

¹ College of Biology and Environment, Nanjing Forestry University, 159 Longpan Road, Nanjing 210037, Jiangsu, China.

² Corresponding author: yangyong@njfu.edu.cn

³ Harvard University Herbaria, 22 Divinity Avenue, Cambridge, MA 02138, U.S.A.

Harvard Papers in Botany, Vol. 26, No. 2, 2021, pp. 415–416.

© President and Fellows of Harvard College, 2021

ISSN: 1938-2944, DOI: 10.3100/hpib.v26iss2.2021.n4, Published online: 31 December 2021

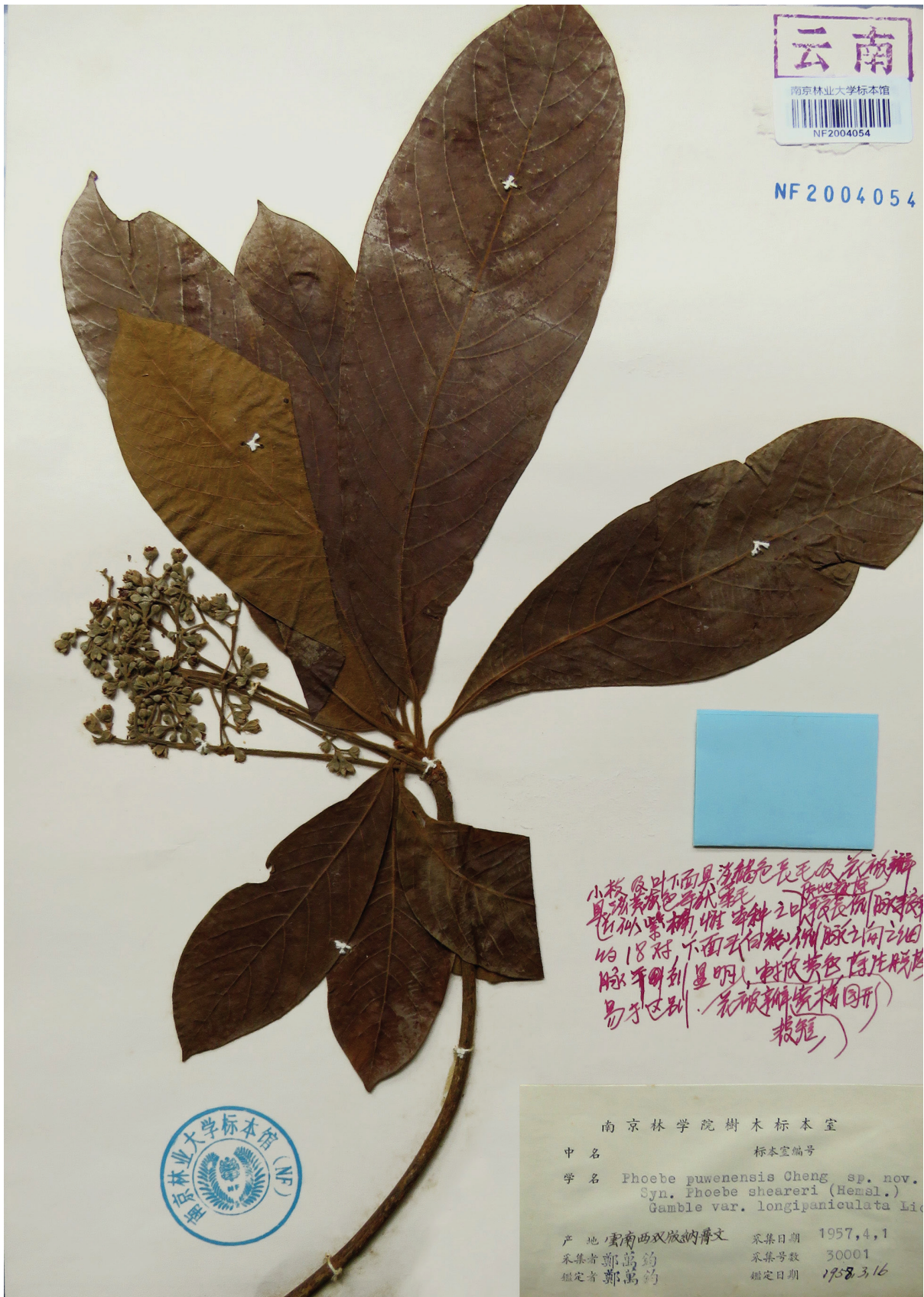


FIGURE 1. Lectotype of *Phoebe puwenensis* W. C. Cheng (W. C. Cheng 30001, NF2004054).