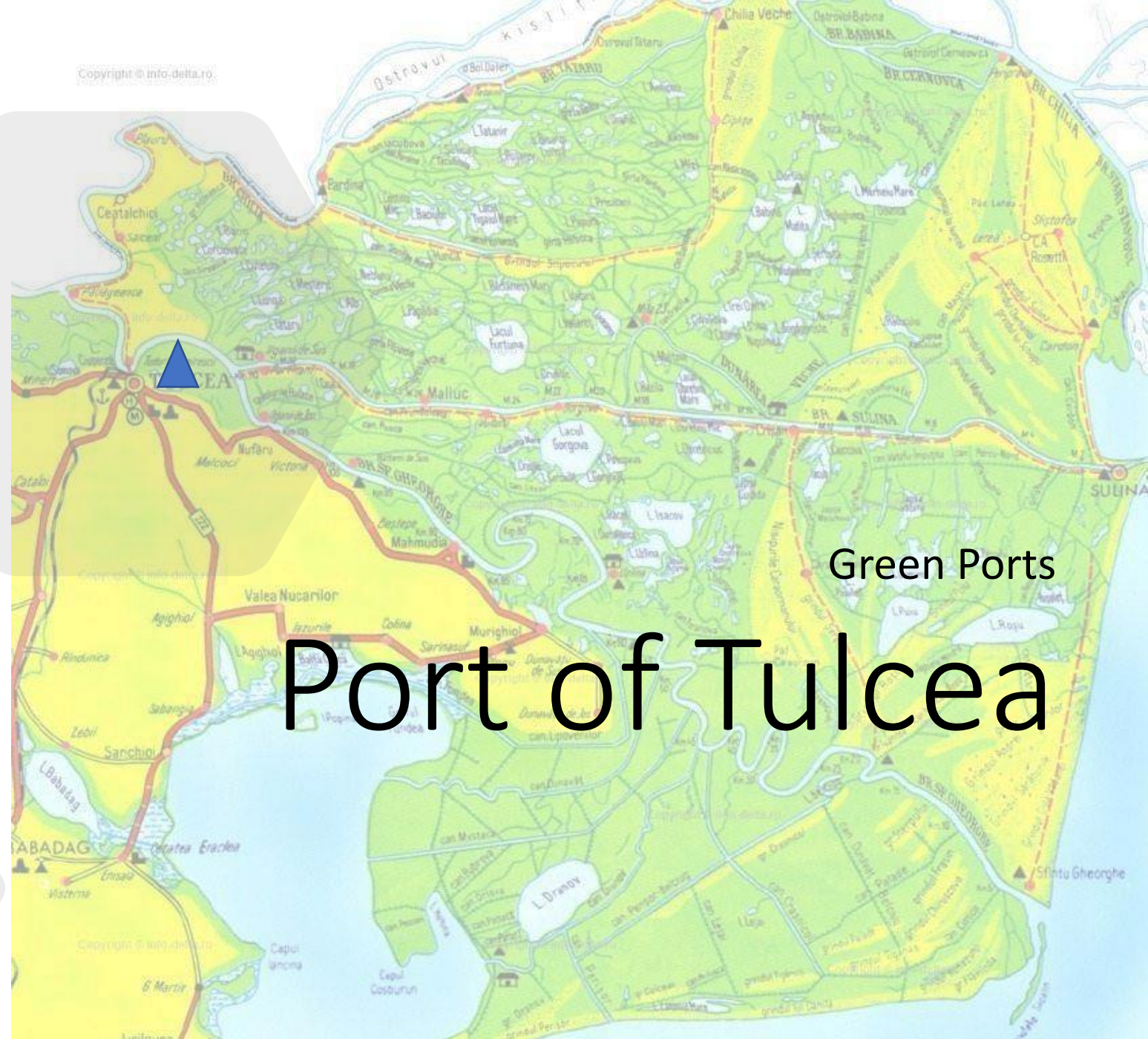


Fudetul  
Tulcea



TULCEA COUNTY  
COUNCIL



Green Ports

Port of Tulcea



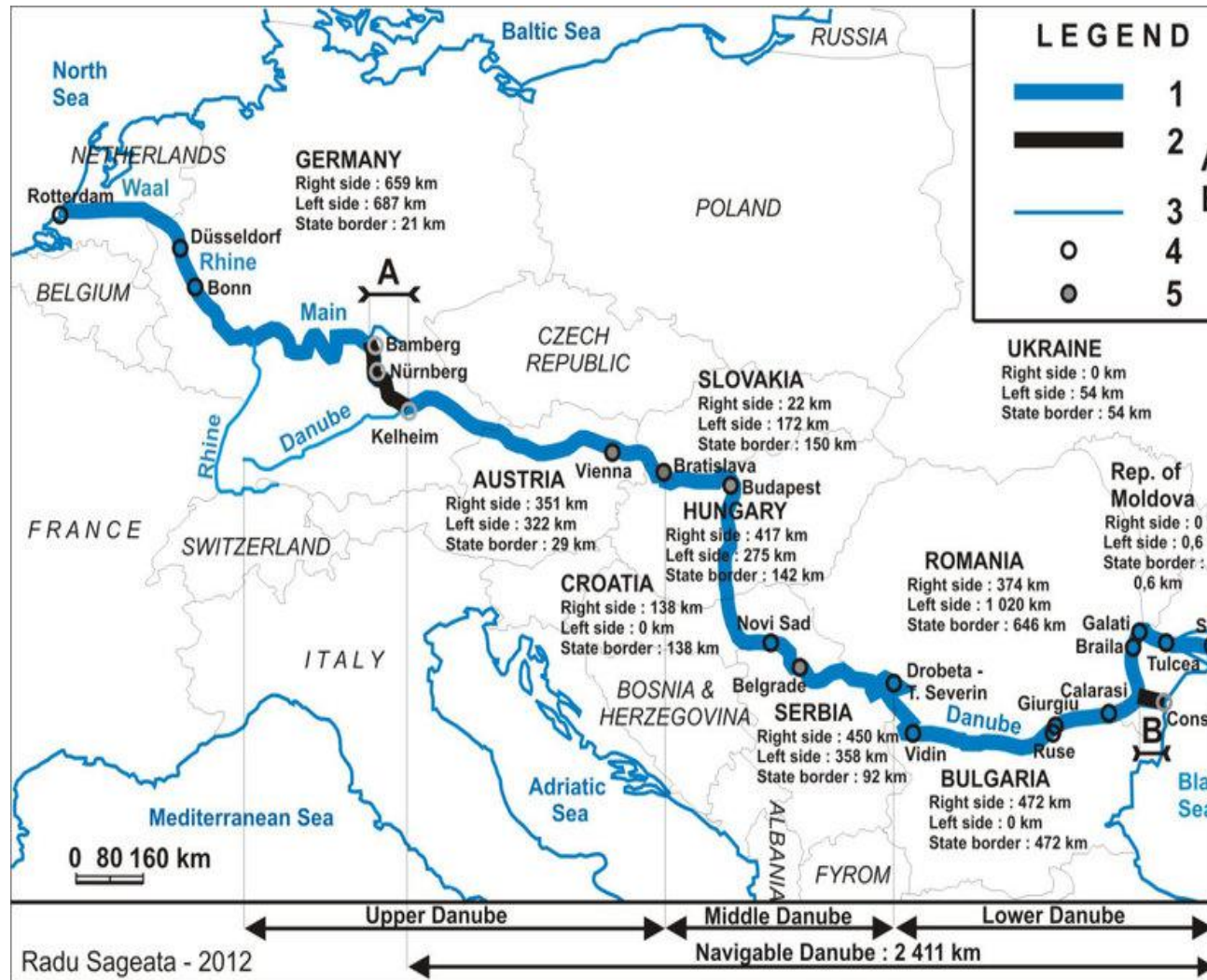


# Environmental perspective

- Danube River
- Danube Delta –
  - natural habitat
  - human settlements (16,000 people are resident)
- Black Sea Coast
- Air and water pollution



# Geographic perspective



- Inland waterway
- Maritime Danube
- Danube Delta
- Rhein-Danube – inland waterway/multimodal corridor
- Green corridor
- Competition with railway and road: intermodal hubs along Danube; TEN-T



# Climate

- The climate of the Danube Delta is *continental*, with strong influences from the vicinity of the **Black Sea** and its dominant **amphibian environment**.

- It is the driest and sunniest region of Romania.







Climate Change  
impact





**Tulcea City**  
founded in the 7th century B.C



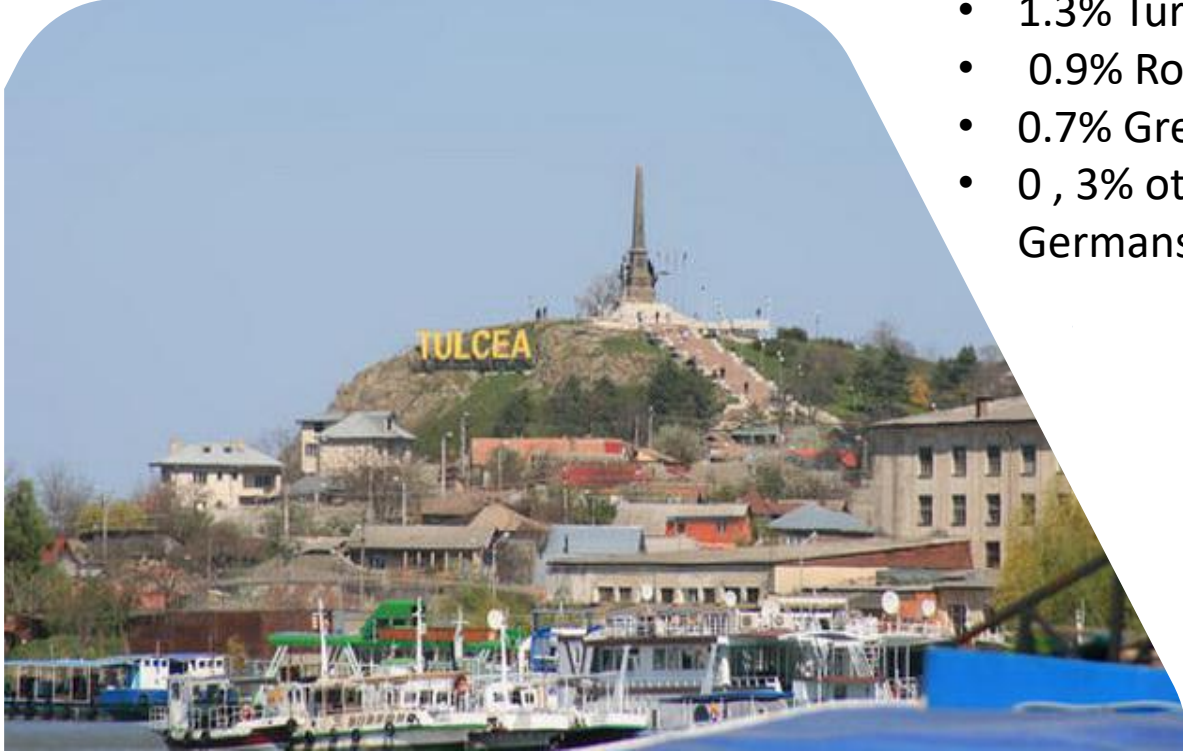


# Ethnic diversity



Ethnic structure of Tulcea County population (at the census of March 18, 2002) was as follow:

- 90% Romanians
- 6.4% Russians-Lipovans
- 0.5% Ukrainians
- 1.3% Turks
- 0.9% Roma
- 0.7% Greeks
- 0, 3% other ethnic minorities (Hungarians, Tatars, Germans, Bulgarians, etc.).



Tulcea has a population of 73,707 inhabitants



# Economical activities and environmental impact



The main economical activities performed in Tulcea are:

- industrial ( the metallurgical industry 51% of the total value— one Aluminum factory and one Shipyard)
- food (29%)
- transportation (6.4%).



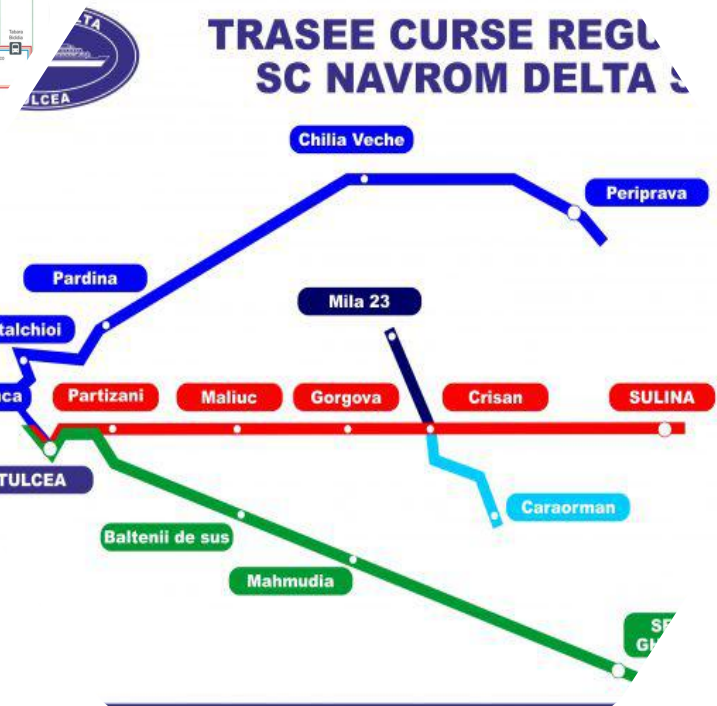
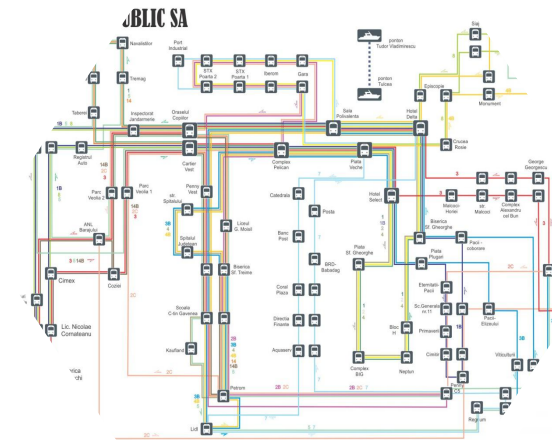


# Transport- intermodality: road-rail-aviation- waterways



- "Danube Delta" **Airport** situated 17km from Tulcea is currently undergoing a complex modernization project in order to comply with the European aviation regulations in force
- Tulcea city's connection with the **railway** station as well as with **the river** is done through a single main artery (the promenade), which thus takes over all traffic categories (motor vehicles, public transport, etc.) but whose capacity is limited.
- The patrimony of the **public transportation company's** comprises 34 buses in service, which are used as follows:
  - for urban transport = 29 transport units;
  - for county and inter-county transport = 5 transport units.

Public transport routes do not quite cover the territory of the municipality street configuration and condition. It has also been found that all urban transport lines pass through the area by loading the traffic on Isacsei Street, until the capacity exceeds the time, the railway station and the area of the Danube crossing is not linked to any public transport.





# Port of Tulcea- Stakeholders & Main policy makers

- Port of Tulcea Authority – RNA (Romanian Naval Authority)
- APDM - Maritime Danube Port Administration
- Municipality of Tulcea
- Tulcea County
- Danube Delta Biosphere Reserve Authority
- AFDJ (Lower Danube River Administration)
- RA AZL Sulina (Autonomous Administration of the Sulina Free Zone Administration)
- End-users...26 customers

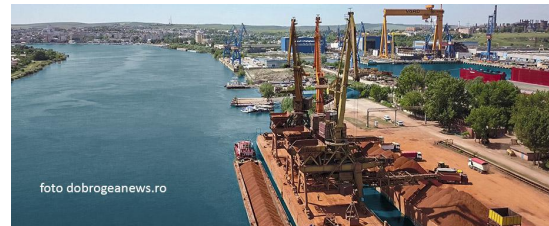






## Operational perspective

- *Danube-Black Sea Canal*
  - Cargo
  - Public-shared mobility
  - Tourist journeys





# Passenger Transport

- Galati – Tulcea
- Tulcea – Danube Delta:
- Chilia; Sulina; Sfantul Gheorghe
- County Administration – Project on mobility
- Scheduled and unscheduled transport (tourists).
- Shared mobility & Private – tourists
- Micromobility- bikes.
- Active mobility



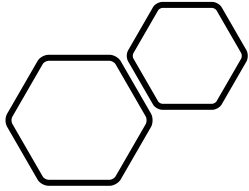




# Green approach

- Green port
- Green vessels
- Green Journeys
- Digitalization of port activities
- Smart & intelligent & integrated transport systems
- Multimodal and green trips
- Sustainability- UN-SDGs



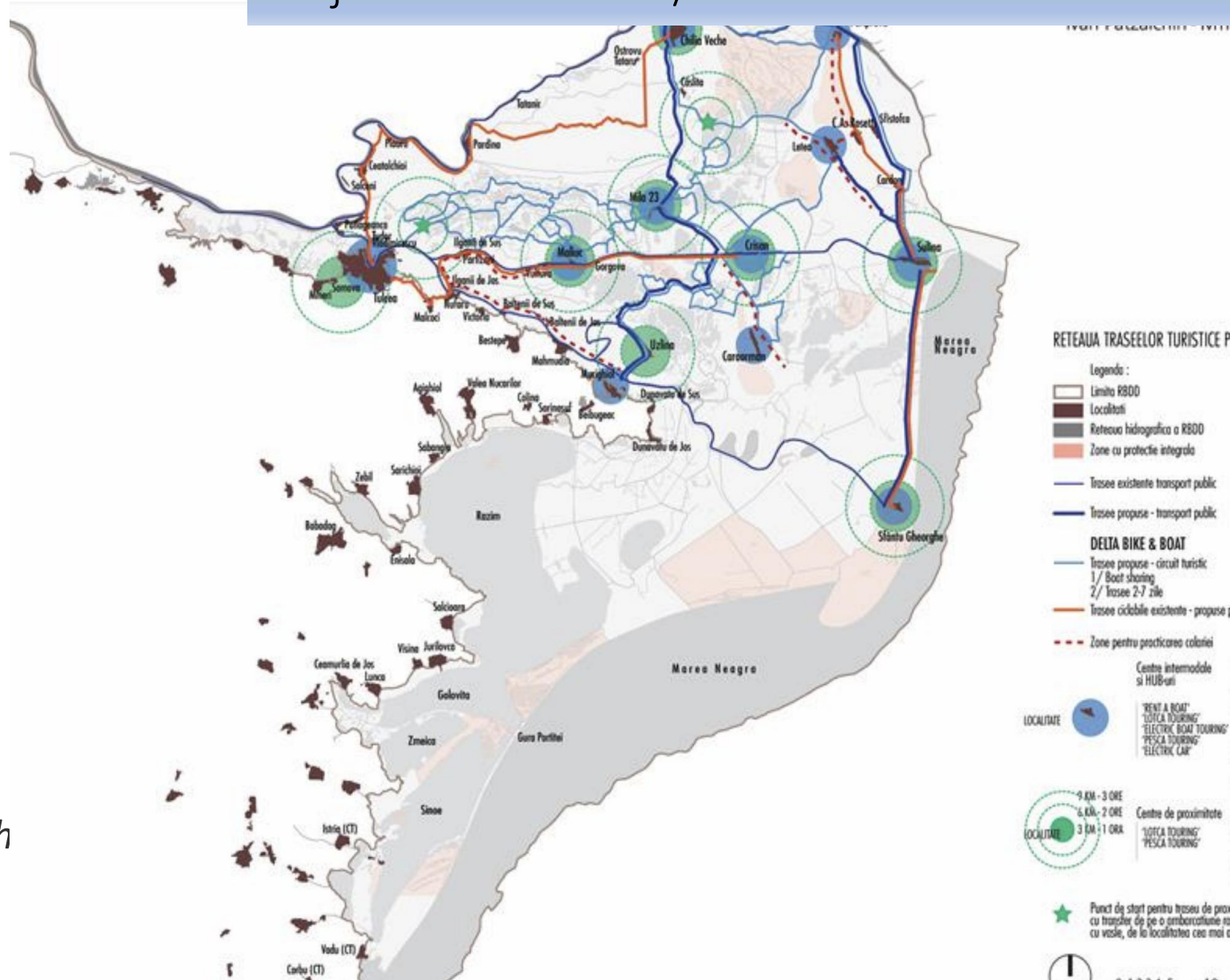


## Transport

- *Transdanube. Pearls* - Network for Sustainable Mobility along the Danube - [Interreg](#)
- TRANSDANUBE “Sustainable Transport and Tourism along the Danube”
- SUMP(Sustainable Urban Mobility Plans Tulcea)
- Projects ITI: *Tulcea-Braila bridge*
- Tulcea Port Development

## Climate adaptation

“Climate proofing the Danube Delta through integrated land and water management” , ENRTP Programme\_EC









# Delta

- one of the largest and most remarkable river wetlands in Europe;
- Biosphere Reserve, Ramsar site, UNESCO World Heritage Site;
- it overlaps with 4 sites of community interest included in the Natura 2000 ecological network.



- the mosaic of habitats hosts a unique mix of flora and fauna species, with about 2000 vascular plants and more than 3000 animal species;
- high density of species that are rare or missing in other European areas;
- represents a treasure for the natural heritage of Europe and for ensuring the overall connectivity of species;
- home to several globally threatened bird species, including the red-breasted goose, the Dalmatian pelican and the pygmy cormorant, which either breed or winter in the delta.





# protection

- In the context of climate change and mobility development, the **conservation** of biodiversity and environmental quality in the Danube Delta is a main **challenge**;
- **Preferential habitats** and **natural passageways** of the species must be determined and **mobility solutions must be adapted in relation to them**;
- It is necessary to investigate the **synergistic effects of climate change** and other pressures on biodiversity and ecosystems and integrate measures for nature conservation, climate protection and adaptation.







- Smart Innovation Hub – around the green port- Tulcea
- Extension of the concept: Smart City – Smart Port City:
- Port as an urban development entity
- **WATERPOLITAN** – area: challenges & opportunities
- Wetland – city neighborhoods
- SUMP
- **Project on Port Tulcea Modernisation(2020):**
  - Reducing time related to operations in Port
  - Increasing safety aspects
  - Increasing accessibility
  - Building new port infrastructure of 36,016 m2
- Opportunities of investments through the EU Recovery & Resilience Fund





N TRAINING

#newIDEAS #SocialNeeds  
#Creativity #DesignThinking  
#SocialEntrepreneurship  
#BusinessModelCanvas



# Innovations

## Quality of Life

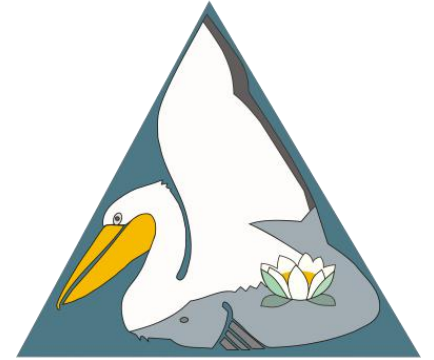
- New green oriented lifestyles
- New jobs: generate income through **responsible tourism** and reinvesting it in *conservation and community development*
- Develop a **Social Enterprise Ecosystems**
- Better integration of social attributes
- Inter-cultural ethnic group
- Access to social services- facilities
  - connect services to markets (website)
- Preservation of human heritage – **new values**





# Romanian team around the Port of Tulcea

- DDNI
- COMOTI
- PGU
- UPB
- FLAG
- Geostud
- BEIA
- AZL & Port of Tulcea
- Port of Giurgiu







# Thank you!

- [florin.nemtanu@upb.ro](mailto:florin.nemtanu@upb.ro)
- [D.Dimitriu@mmu.ac.uk](mailto:D.Dimitriu@mmu.ac.uk)
- [iulian.nichersu@ddni.ro](mailto:iulian.nichersu@ddni.ro)
- [valentinmoldoveanu1988@gmail.com](mailto:valentinmoldoveanu1988@gmail.com)
- [Dragos.Balaican@ddni.ro](mailto:Dragos.Balaican@ddni.ro)