

# Intelligent Video Security Solutions

## IDVIEW PRODUCT BROCHURE 2021

**Reliable Products. Affordable Solutions.**

Innovative products of tomorrow, designed to meet your needs today.

**TX Location:**  
Sandy Lee  
Dallas, TX

972-247-1203 x-7301

**CA Location:**  
Vincent Tong  
Westminster, CA

972-247-1203 x-7323

**FL Location:**  
Lori Forgione  
Boca Raton, FL

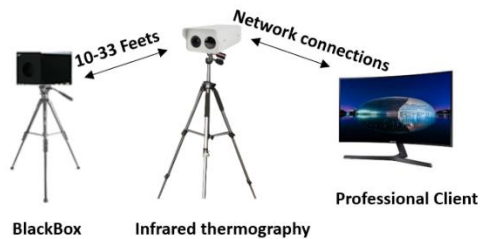
800-659-3391

12000 Ford Road, Suite 110, Dallas, TX 75234

Tel: 972-247-1203 Fax: 972-247-1291 Toll Free: 800-379-7226

[www.idview.com](http://www.idview.com)





## IV-TMS600-US

- Thermal camera Resolution: 384 \* 288
- Focal Length: 18mm
- Angle of View (H): 25°
- Angle of View (V): 19°
- Visible camera resolution: = 2MP
- Recommended distance: 10-33 ft
- Environment Temperature range: 60 °F ~ 90 °F
- Temperature measurement accuracy:  $\pm 0.6$  °F
- Infrared machine head interface: Aviation plug
- Network Interface: RJ45
- High response speed and efficiency
- Automatic alarm and Alarm prompt
- Image storage for easy recording and tracking

## Optimized AI algorithm

Support detect faces wearing masks



## Multi-target Face Detection

Quick screening and reduce false alarm caused by other objects.



- ❖ Quick preliminary Screening
- ❖ Long Range Temperature Measurement
- ❖ No need extra cooperation

## Application Scenarios

## Handheld Thermal Imager

## Wireless Video Doorbell



Airport



Railway



Seaport



Bank



IV-UTI165H

- 2.8" TFT screen
- Infrared resolution: 160x120
- Frame frequency: 9Hz
- Range of temperature measurement: 86°F~113°F
- Accuracy:  $\pm 0.9$ °F
- Photographed function and SD card storage
- PC software analysis
- Point temperature measurement
- Type-C USB interface for lithium battery charging
- 1/4" tripod mounting hole



IV-DOORBELL-WIFI

- **Two-way talk** : HD Talk and listen on the APP
- **Person alerts** : Reduce false alarm triggered by leaves, pets and etc.
- **Push notifications**: Receive instant alerts on the phone when motion is detected
- **HD videos** : Crystal-clear 1080p full HD video
- **High-quality night vision** : Enjoy clear night view, never missing details
- **SD card recordings** : 128GB SD card storage for save Video recordings
- **Outdoor use** : IP65 water-proof



## Human Body Temperature Measurement Gate



### IV-OPD-533TM

- Temperature: High stability of temperature measurement, strong resistance to environmental interference
- Availability: High detector yield
- Temperature measuring distance: Less than 0.2ft
- Transit mode: Need to cooperate, less than 3s
- Thermometric error:  $\pm 0.9$
- Resolution ratio:  $0.04$  °F
- Power supply: AC110V
- Overall dimension: 2270mm\*830mm\*500mm.

## TMS Gate Features



Automatic Measurement



Non-contact body temperature measurement



High efficiency for 15-20 people pass per minute



Real-time alarm



Metal detection for 18 zones

## Fever Detection Pole



### IV-OTC-513

- Measurement area: Wrist
- Measurement range:  $86^{\circ}\text{F}\sim 113^{\circ}\text{F}$
- Precision:  $0.2^{\circ}\text{F}$
- Measurement deviation:  $\leq \pm 0.6^{\circ}\text{F}$
- Measurement distance:  $10\sim 33\text{mm}$
- Display: 7" touch screen
- Alarm mode: Sound alarm
- Material: Stainless steel
- Power supply: DC  $12\text{V}\pm 25\%$  input
- Operating temperature:  $59^{\circ}\text{F}\sim 86^{\circ}\text{F}$
- Operating humidity:  $< 95\%$ , non-condensing

## Application Scenarios



School



Enterprise

## Fever Detection Face Recognition Terminal



Mounting Bracket  
IV-EP-S31



### IV-OET-213H-BTS1

- Fever detection + mask-missing detection
- Safety, non-contact temperature measurement
- Temperature information binding with face pictures
- High efficiency, 20-30 people/min.
- $0.2^{\circ}\text{F}$  Accuracy,  $0.6^{\circ}\text{F}$  deviation temp measurement
- 10,000 face capacity, 7-inch touch screen
- Multiple authentication mode
- Dual-lens anti-spoofing

## Forehead Face Recognition Terminal



Mounting Bracket  
IV-EP-S31



### IV-OET-213H-BTM32

- Fever detection + mask-missing detection
- Safety, non-contact temperature measurement
- Temperature information binding with face pictures
- High efficiency, 20-30 people/min.
- $0.2^{\circ}\text{F}$  Accuracy,  $0.6^{\circ}\text{F}$  deviation temp measurement
- 10,000 face capacity, 7-inch touch screen
- Multiple authentication mode
- Dual-lens anti-spoofing

## Integrated Wrist Temperature Measurement System



### IV-CW180

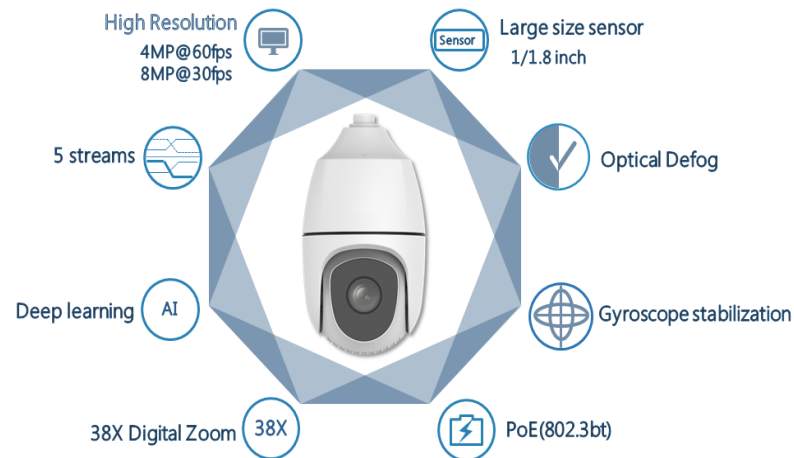
- Resolution:  $1920*1080$
- Lens: 4.0mm
- Angle of View (H):  $86.5^{\circ}$
- WDR: 120dB
- Measuring Range:  $95\sim 108^{\circ}\text{F}$
- Error Margin:  $\leq 0.6^{\circ}\text{F}$
- Measuring Distance:  $1\text{cm}\sim 3\text{cm}$
- Screen size: 31.55 inch
- Alarm: Support real-time alarm of abnormal body temperature
- Temperature Display: Support real-time temperature display
- People Counting: Support the real-time statistics of the number of normal and abnormal body temperature
- Mask Detection: Support no mask reminder
- Power: DC 48V (Power on the NVR)
- Working Environment:  $50\sim 113^{\circ}\text{F}$



**IV-IP4MPPTZUCLL38X-CA**  
**IV-IP8MPPTZUCLL38X-UN**

- Auto tracking, target classification, track human or vehicle according to user's configuration
- Video metadata, accurate access, control for target, search targets quickly by type and attributes
- Camera can realize target classification (human or vehicle) to reduce false alarm
- IR distance up to 820ft
- IP66, Advanced waterproof
- Big size Sensor + advanced ISP processing technology, image has little noise in ultra low-light environment
- 120dBWDR, automatically switch according to environment brightness

## Artificial Intelligence in IP PTZ



### Affordable PTZ

### Artificial Intelligence in IP PTZ

### Color Low-light



**IV-IP2812CLL5MPPTZ-CA**

- 1/2.7" / 5MP / CMOS
- Focus: 2.8~12mm
- Iris: F1.2
- Angle of view (H): 30.6°~104.1°
- Colour: 0.003 lux (F1.6, AGC ON)
- 0 lux with IR
- UP to 164ft IR distance
- Ultra 265, H.265, H.264, MJPEG
- Built-in Mic
- Built-in Speaker
- UP to 33ft Warm Light Range
- Two-way Audio Supported
- MicroSD, up to 256GB
- AC 24V, DC 24V
- IP66
- Power Consumption: 18W



**IV-IP5XPTZ5MPLLC-WDR-UN**

- 1/2.7" / 5MP / CMOS
- Focus: 2.7~13.5mm
- Iris: F1.2
- Angle of view (H): 107.8°~252.6°
- 5X Optical Zoom
- Colour: 0.002 lux (F1.2, AGC ON)
- 0 lux with IR
- Pan Range; 350°
- Up to 98ft IR distance
- Ultra 265, H.265, H.264, MJPEG
- Triple streams
- Built-in Mic
- Built-in Speaker
- MicroSD, up to 256GB
- DC 12V, PoE
- Power Consumption: 16W



**IV-IP4MPPTZUCLL38X-CA**

- 1/1.8" / 4MP / CMOS
- Focus: 5.7~216.6mm
- Iris: F1.5~F4.8
- Angle of view (H): 58.45°~2.14°
- 38X Optical Zoom
- Colour: 0.0005 lux (F1.36, AGC ON)
- 0 lux with IR
- Pan Range; 360°
- Up to 820ft IR distance
- Ultra 265, H.265, MJPEG
- Triple streams
- Audio I/O
- MicroSD, up to 256GB
- AC 24V, DC 24V, PoE
- IP66
- Power Consumption: 16~51W



**IV-IP8MPPTZUCLL38X-UN**

- 1/1.8" / 8MP / CMOS
- Focus: 5.7~216.6mm
- Iris: F1.5~F4.8
- Angle of view (H): 61.17°~2.26°
- 38X Optical zoom
- Color: 0.003Lux (F1.36, AGC ON)
- 0Lux with IR
- Pan Range 360°
- Up to 820ft IR distance
- Ultra 265, H.264, MJPEG
- Triple streams
- Audio I/O
- MicroSD, up to 256GB
- AC 24V, DC 24V, PoE
- IP66
- Power Consumption: 16~51W



**Normal 4K PTZ**

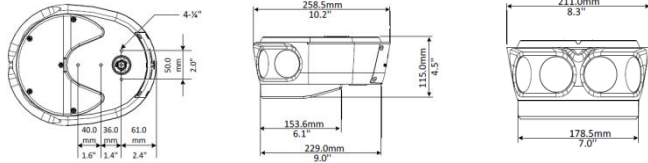


**Color Low-Light 4K PTZ**

# 4K OMNI-VIEW IP



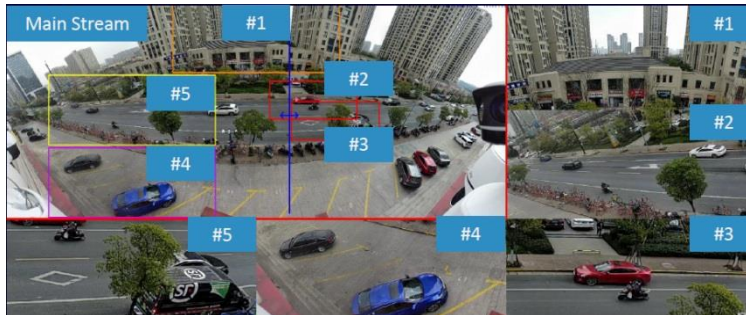
## IV-8MP180MTSU



### Highlight features

- Panoramic view** (180°): 4 sensors with 180° horizontal and 80° vertical FOV. Video Alignment for a Seamless Image.
- Super high definition**: 8Mp, 4096\*1800@30fps.
- Innovative design**: Inspired by night owl.
- ePTZ**: 5 ePTZ. Auto-tracking triggered by crossing line/intrusion/entry/exit in multi-area.
- Water-proof** (IP67): All weather application. Heat elimination, fog removal, heating at low temperature.
- Built-in fan & heater**: All weather application. Heat elimination, fog removal, heating at low temperature.
- Color Low-Light**: High sensitivity sensor and patented ISP technology for crystal image.
- Optical glass window**: High hardness & scratch-proof.

### 5 ePTZ Auto Tracking – with only 1 IP address required



- **5 ePTZ**: From main stream, support up to 5 areas for ePTZ as showed. For each window, support ePTZ and mouse to zoom in/out
- **Auto tracking principle**
  - Tracking in the nearest window
  - Tracking triggered by time sequence. If the nearest window has been occupied, then tracking will be triggered in other spare window. If any window finishes tracking and a target is in the triggered sequence, this target tracking will be in this window
  - Up to 5 targets auto tracking
  - Support manual operation with higher priority. Tracking will be ready 3 seconds after manual operation

### Applications







**IV-8MP180DE**

- 1/2.8" / **4K(8MP)** / Progressive Scan CMOS
- Type: **Dome**
- Lens: 1.68mm@F2.0
- Up to 15m (50ft) IR distance
- H.265+/H.265/H.264+/H.264 / MJPEG
- Support microSD Card, up to 256G
- Built-in Microphone
- **IP67** Weather Rating
- **IK10**-rated Metal Housing
- PoE (802.3af) / DC 12V±10%



**IV-8MP180BU**

- 1/2.8" / **4K(8MP)** / Progressive Scan CMOS
- Type: **Bullet**
- Lens: 1.68mm@F2.0
- Up to 15m (50ft) IR distance
- H.265+/H.265/H.264+/H.264 / MJPEG
- Support microSD Card, up to 256G
- Built-in Microphone
- **IP67** Weather Rating
- **IK10**-rated Metal Housing
- PoE (802.3af) / DC 12V±10%



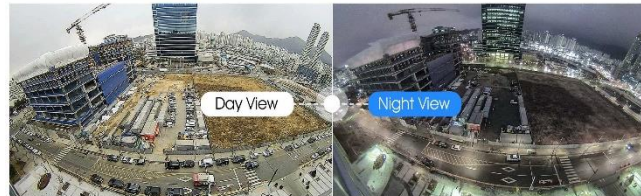
## Advanced Features on 180° Panoramic Camera

### 180° Panoramic View



The 180° Panoramic H.265+ Network Camera is perfect for whole picture viewing experience.

### 0.005Lux Ultra Low-light



Able to deliver high detailed color images even in extremely low light environments reaching 0.005Lux (Color) or 0Lux (B/W)

### IP67 & IK10



Supporting **IP67-rated** weather proofing  
**IK10-rated** vandal proofing

### 4K High Resolution Sensor



4K ultra high resolution to guarantee superb image. Introducing the whole scene monitoring without any details missing.

### 120dB Super WDR



Up to 120dB Super WDR allows the Camera to record greater scene details with true color reproduction even under the extreme back light and high contrast conditions.

### Built-in Microphone



Adopting the advanced codec in microphone

### MicroSD Card



Supporting MicroSD/SDHC/SDXC Card Slot



Ultra 265 is an end to end solution which can save up to **95%** storage space.



**IV-4CHDVR2IP-4K-CA**

- IP Video Input - 2CH
- Analog Video Input - 4CH
- Input Bandwidth - 48 Mbps
- Audio Input - 1-ch, RCA
- 1 HDMI, 1 VGA
- Audio Output - 1-ch, RCA
- Outgoing Bandwidth - 64 Mbps
- Main stream:
- 8MP Lite@8fps(channel1)
- 5MP Lite@12fps
- 4MP Lite@15fps
- 3MP@15fps(channel1)
- 2MP@15fps
- 720P@30fps
- Sub stream - D1@30fps(Max)
- HDD - 1 SATA interface



**IV-8CHDVR4IP-4K-CA**

- IP Video Input - 4CH
- Analog Video Input - 8CH
- Input Bandwidth - 56 Mbps
- Audio Input - 1-ch, RCA
- 1 HDMI, 1 VGA
- Audio Output - 1-ch, RCA
- Outgoing Bandwidth - 64 Mbps
- Main stream:
- 8MP Lite@8fps(channel1 - 2)
- 5MP Lite@12fps
- 4MP Lite@15fps
- 3MP@15fps(channel1 - 2)
- 2MP@15fps
- 720P@30fps
- Sub stream - D1@30fps(Max)
- HDD - 2 SATA interfaces



**IV-8CHDVR8IP-4K-UN**

- IP Video Input - 8CH
- Analog Video Input - 8CH
- Input Bandwidth - 80 Mbps
- Audio Input - 4-ch, RCA
- 1 HDMI, 1 VGA
- Audio Output - 1-ch, RCA
- Outgoing Bandwidth - 64 Mbps
- Main stream:
- 8MP@8fps (All Channel)
- 5MP@12fps
- 4MP@15fps
- 3MP@18fps
- 2MP@25fps
- 720P@30fps
- Sub stream - D1@30fps(Max)
- HDD - 2 SATA interfaces



**IV-16CHDVR8IP-2SATA-IF**

- IP Video Input - 8CH
- Analog Video Input - 16CH
- Input Bandwidth - 72 Mbps
- Audio Input - 1-ch, RCA
- 1 HDMI, 1 VGA
- Audio Output - 1-ch, RCA
- Outgoing Bandwidth - 80 Mbps
- Main stream:
- 8MP Lite@8fps(channel1 - 4)
- 5MP Lite@12fps
- 4MP Lite@15fps
- 3MP@15fps(channel1 - 4)
- 2MP@15fps
- 720P@30fps
- Sub stream - D1@30fps(Max)
- HDD - 2 SATA interfaces

**Human Body Detection**



High recognition rate

Low missed detection rate

Fast recognition

**REDUCE  
FALSE  
ALARM**



**EZ IP Series**



**IV-4CHPOENVREU-CA**

- IP Video Input - 4CH
- Analog Video Input - N/A
- Input Bandwidth - 40 Mbps
- Audio Input - 1-ch
- 1 HDMI, 1 VGA
- Audio Output - 1-ch
- Outgoing Bandwidth - 64 Mbps
- Decoding Capability: 4K
- HDD - 1 SATA interface
- PoE - 4 x PoE+
- Power Supply - 48V DC, 1.25A
- Alarm I/O - 4/1



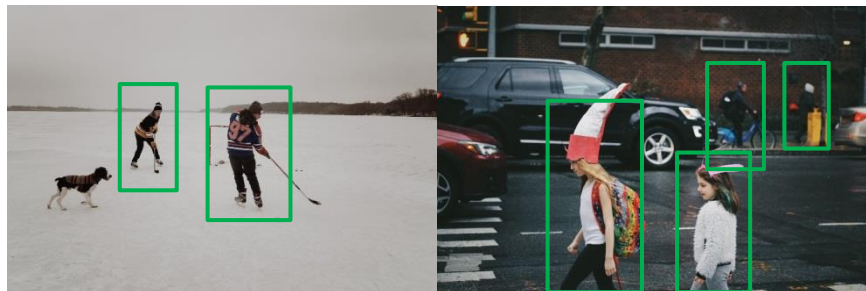
**IV-8CHPOENVREU-CA**

- IP Video Input - 8CH
- Analog Video Input - N/A
- Input Bandwidth - 60 Mbps
- Audio Input - 1-ch
- 1 HDMI, 1 VGA
- Audio Output - 1-ch
- Outgoing Bandwidth - 64 Mbps
- Decoding Capability: 4K
- HDD - 1 SATA interface
- PoE - 8 x PoE+
- Power Supply - 52V DC, 1.8A
- Alarm I/O - 4/1



**IV-16CHPOENVRS2-CA**

- IP Video Input - 16CH
- Analog Video Input - N/A
- Input Bandwidth - 160 Mbps
- Two-way Audio Input - 1-ch
- 1 HDMI, 1 VGA
- Audio Output - 1-ch
- Outgoing Bandwidth - 96 Mbps
- Decoding Capability: 4K
- HDD - 2 SATA interfaces
- PoE - 16 x PoE+
- Power Supply - 220V AC
- Alarm I/O - 4/1





Face detection



Intrusion detection



Cross line detection



Object abandon



Scene change

**MORE THAN A VIDEO RECORDER**



Object removal



People counting



Audio exception



Defocus detection



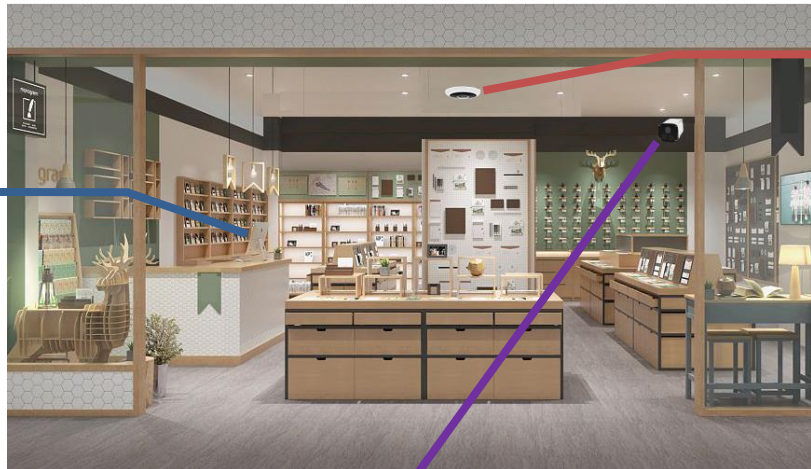
Auto tracking

**POS OSD**

Record transaction data to prevent dispute

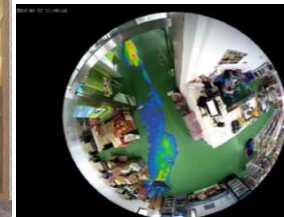
**People counting**

Display people number Support data export Periodically statistics query



**Fish-eye**

3 mount modes  
16 de-warp modes  
Preview and playback



**Heatmap**

Support data export  
Explore the favorite zone  
Periodically statistics query

**Enhanced Durability – Maglev Fan**

**Regular Fan**



Avg service time  
40,000 hours

**Maglev Fan**



Avg service time  
More than 60,000 hours

Service time ↑ 50%

Noise ↓ 20%

Reduce vibration and noise caused by mechanical friction. **More reliable.**

**Prime Series**



**IV-8EP302S-CA**

- IP Video Input - 8CH
- Analog Video Input - N/A
- Input Bandwidth - 80 Mbps
- Audio Input - 1-ch
- 1 HDMI, 1 VGA
- Audio Output - 1-ch
- Outgoing Bandwidth - 64 Mbps
- Decoding Capability: 2\*4K
- HDD - 2 SATA interfaces
- PoE - **8 x PoE+**
- Power Supply - 100 ~ 240V AC
- Alarm I/O - 4/1



**IV-16EP302B-CA**

- IP Video Input - 16CH
- Analog Video Input - N/A
- Input Bandwidth - 320 Mbps
- Audio Input - 1-ch
- 1 HDMI, 1 VGA
- Audio Output - 1-ch
- Outgoing Bandwidth - 320 Mbps
- Decoding Capability: 4K
- HDD - 2 SATA interfaces
- PoE - **16 x PoE+**
- Power Supply - 100 ~ 240V AC
- Alarm I/O - 4/1



**IV-32164KPOENVR-CA**

- IP Video Input - 32CH
- Analog Video Input - N/A
- Input Bandwidth - 320 Mbps
- Audio Input - 1-ch
- 2 HDMI, 1 VGA
- Audio Output - 1-ch
- Outgoing Bandwidth - 320 Mbps
- Decoding Capability: 4K
- HDD - 4 SATA interfaces
- PoE - **16 x PoE+**
- Power Supply - 100 ~ 240V AC
- Alarm I/O - 16/4



**IV-64CHNVR-8SATA-CA**

- IP Video Input - 64CH
- Analog Video Input - N/A
- Input Bandwidth - 320 Mbps
- Audio Input - 1-ch
- 2 HDMI, 1 VGA
- Audio Output - 1-ch
- Outgoing Bandwidth - 320 Mbps
- Decoding Capability: 4K
- HDD - 8 SATA interfaces, 1 eSATA interface
- PoE - N/A
- Power Supply - 100 ~ 240V AC
- Alarm I/O - 16/4



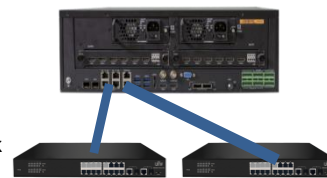
## Powerful Decoding



- ❖ **Optional decode card**  
4/6 HDMI ports models are available.
- ❖ **Scalable decode capability**  
Different decode card can be mixed together to meet requirement precisely.
- ❖ **Versatile business**  
Support preview, playback, video split and scene settings.
- ❖ **Unlimited decode**  
When network decoder is connected the decode capability and function will be unlimited.

## Load Balance

- ❖ **Balanced disk I/O**  
Periodically switch writing disk  
Balance write task between disks
- ❖ **Network balance mode**  
Balance network flow between network interface and boost network bandwidth



Prolonged disk service time and improved performance  
Increased network bandwidth and optimized system throughput.  
**Prepared for something big.**

## Industrial Grade RAID

- ❖ **Professional RAID**  
Support RAID mode 0/1/5/6/10/50/60
- ❖ **Hot Spare**  
Spare disk is used to rebuild disk array automatically
- ❖ **Hot Swap**  
Hot pluggable disk design
- ❖ **Strategic Partner**  
Cooperating with famous HDD vendors like Seagate, Western Digital, Toshiba



Profound storage technology realized non-stop maintain and automatic repair.  
**More efficient, more reliable.**

## PRO series with Powerful Decoding



### IV-64CHNVR-16SATA-UN

- IP Video Input - **64CH**
- Input Bandwidth - 384 Mbps
- Audio Input - 1-ch
- 2 HDMI, 1 VGA
- Audio Output - 1-ch
- Outgoing Bandwidth - 384 Mbps
- Decoding Capability: 4K
- HDD - 16 SATA interfaces, 1 eSATA interface
- PoE - N/A
- Power Supply - 100 ~ 240V AC
- Alarm I/O - 24/8
- USB interface - 4\* USB3.0



### IV-128CHNVR-16SATA-UN

- IP Video Input - **128CH**
- Input Bandwidth - 512 Mbps
- Audio Input - 1-ch
- 2 HDMI, 1 VGA
- Audio Output - 1-ch
- Outgoing Bandwidth - 384 Mbps
- Decoding Capability: 4K
- HDD - 16 SATA interfaces, 1 eSATA interface
- PoE - N/A
- Power Supply - 100 ~ 240V AC
- Alarm I/O - 24/8
- USB interface - 4\* USB3.0



### IV-256CHNVR-16SATA-UN

- IP Video Input - **256CH**
- Input Bandwidth - 512 Mbps
- Audio Input - 1-ch
- 2 HDMI, 1 VGA
- Audio Output - 1-ch
- Outgoing Bandwidth - 384 Mbps
- Decoding Capability: 4K
- HDD - 16 SATA interfaces, 1 eSATA interface
- PoE - N/A
- Power Supply - 100 ~ 240V AC
- Alarm I/O - 24/8
- USB interface - 4\* USB3.0



### IV-1CHHDMI-4X8M

- Input Channel - 1CH
- Output Channel - 1-ch
- HDMI Output - 1-ch
- Video Decoding Resolution - 12MP, 8MP, 6MP, 5MP, 4MP, 3MP, 1080P, 1080i, 960P, 720P, D1, CIF
- Decoding Capability - 2x1200W@30, 4x8MP@30, 8x1080P@60, 16x1080P@30
- Display Split - 1/2/3/4/6/7/9/16/25/36
- Alarm I/O - 4/2
- Network Interface - 2xRJ-45 10M/100M/1000M adaptive ethernet
- Power Supply - 12V DC



### IV-4CHHDMI-4X4K

- HDMI Port: Support 4-ch HDMI
- HDMI Output: HDMI at up to 4K(3840x2160) resolution
- Support H.265/H.264 video formats
- Capability: 8\*4K@30, 16\*4MP@30, 32\*1080P@30, 64\*720P
- Multi-window: 1/3/4/5/6/7/8/9/16
- Working Humidity: 10% ~ 90%
- Weight: <1 Kg (2.2 lb)

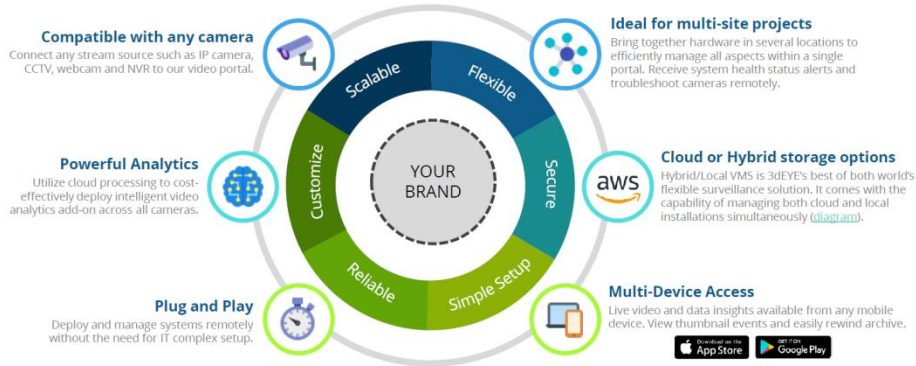


### IV-6CHHDMI-12X4K

- HDMI Port: Support 6-ch HDMI
- HDMI Output: HDMI at up to 4K(3840x2160) resolution
- Support H.265/H.264 video formats
- Capability: 12\*4K@30, 24\*4MP@30, 48\*1080P@30, 96\*720P
- Multi-window: 1/3/4/5/6/7/8/9/16
- Working Humidity: 10% ~ 90%
- Weight: <1 Kg (2.2 lb)

## Targeted Monitoring Through Cloud VMS and Storage

- Offer cloud VMS and storage on existing and new installations for select cameras on multiple locations
- Target owners with multiple franchise locations but do not want to invest in IT infrastructure initially
- Sign on to Cloud package trusting the backbone run by Amazon



## Cloud Managed VMS - you are in the driver seat

- Full featured VMS – built in the cloud
- Designed to reduce operational cost
- Real time software upgrade
- Operates in Windows or MAC
- 100% browser and mobile based
  - Cross Browser Compatible
  - Dedicated iOS and Android Apps
- No cost for new features
- No servers to support
- Analog, IP or both

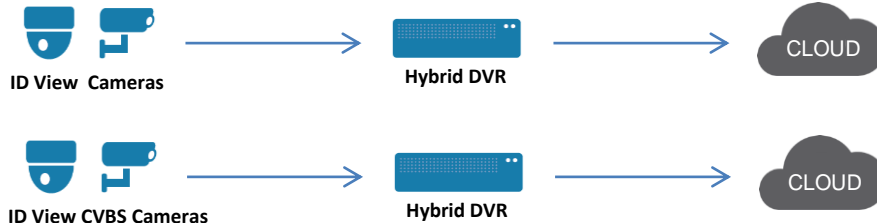


## Use IDView cloud enabled cameras to begin the on-boarding process

### ID View IP Cameras



### ID View Analog Cameras



## Easy, State of the Art Features

### Cloud Analytics

Utilize the power of cloud processing to layer advanced cloud analytics alongside common camera-side analytics to provide an enhanced user experience. IDView cloud analytics enable users to set rule-based analytics with subsequent custom alerts for email or app push notifications during a set schedule for select users.



### Plug & Play (PUSH Module)

IDView developed a unique Push Module solution, allowing cameras to connect directly to the cloud over HTTPS tunnel. This configuration is extremely secure and reliable as there are no intermediate servers. This connection eliminates security vulnerabilities with cameras often being exposed to internet hacking threats over port forwarding. No public access is possible to Push Module connected cameras. Unlike P2P servers, our Push Module does not have issues with ports blocked on ISP providers since it is streaming generic HTTPS traffic.





**Long Range PoE**

250m at 10M mode with Cat5E or Cat6

### Easy to install

3-Axis flexible, easy and Quick Suitable for more scenes



### Plug & Play

The image displays immediately as long as NVR and IPC are connected



**One-Click upgrade**  
Easy to upgrade device by one-click

### One-click output diagnosis log



Easy to output diagnosis log for effective troubleshooting



**Excellent Compatibility**



Onvif (Profile S/G/T), LAPI and SDK



**One-click download/upload configuration**



Quick configuration for all IP cameras by One-click duplicating uploaded parameters



**HTML5**  
Plugin free

@H.265 (IPC&NVR)



**ONE CLICK ONLY**

One-click upgrade IPC&NVR based on cloud



## Easy 4MP – Fixed Lens

## Easy 4MP – Motorized



### IV-BUF404MPLT-CA

- 1/3"/4MP/CMOS
- Type: **Bullet**
- Axis: 3-Axis, Digital WDR
- Focus: **4.0mm**, Iris: F2.0
- Angle of view: 104.4°
- **Zoom: Fixed**
- Colour: 0.02 Lux (F2.0, AGC ON)
- 0 lux with IR
- Up to 4 OSDs
- Up to **30m (98ft)** IR distance
- Ultra265, H.265, H.264, MJPEG
- Triple streams, IP67
- MicroSD, up to 256GB
- DC 12V, PoE
- Power Consumption: 6.4W



### IV-DF284MPLT-CA

- 1/3"/4MP/CMOS
- Type: **Dome**
- Axis: 2-Axis, Digital WDR
- Focus: **2.8mm**, Iris: F2.0
- Angle of view: 104.4°
- **Zoom: Fixed**
- Colour: 0.03 Lux (F2.0, AGC ON)
- 0 lux with IR
- Up to 4 OSDs
- Up to **30m (98ft)** IR distance
- Ultra265, H.265, H.264, MJPEG
- Triple streams, IP67, IK10
- MicroSD, up to 256GB
- DC 12V, PoE
- Power Consumption: 4W



### IV-DEF284MPLT-CA

- 1/2.7"/4MP/CMOS
- Type: **Turret Dome**
- Axis: 3-Axis, Digital WDR
- Focus: **2.8mm**, Iris: F1.6
- Angle of view: 104.4°
- **Zoom: Fixed**
- Colour: 0.03 Lux (F2.0, AGC ON)
- 0 lux with IR
- Up to 4 OSDs
- Up to **30m (98ft)** IR distance
- Ultra265, H.265, H.264, MJPEG
- Triple streams, IP67, IK10
- MicroSD, up to 256GB
- DC 12V, PoE
- Power Consumption: 4W



### IV-DV28124MPZLT-CA

- 1/3"/4MP/CMOS
- Type: **Dome**
- Axis: 3-Axis, Digital WDR
- Focus: **2.8~12mm**, Iris: F1.6
- Angle of view: 106.9°~28.4°
- **Zoom: Motorized**
- Colour: 0.02 Lux (F2.0, AGC ON)
- 0 lux with IR
- Up to 4 OSDs
- Up to **30m (98ft)** IR distance
- Ultra265, H.264, MJPEG
- Triple streams, IP67
- MicroSD, up to 256GB
- DC 12V, PoE
- Power Consumption: 6.3W



### IV-BV28124MPZLT-CA

- 1/3"/4MP/CMOS
- Type: **Bullet**
- Axis: 3-Axis, Digital WDR
- Focus: **2.8~12mm**, Iris: F1.6
- Angle of view: 104.4°~25°
- **Zoom: Motorized**
- Colour: 0.01 Lux (F1.6, AGC ON)
- 0 lux with IR
- Up to 4 OSDs
- Up to **30m (98ft)** IR distance
- Ultra265, H.264, MJPEG
- Triple streams, IP67
- MicroSD, up to 256GB
- DC 12V, PoE
- Power Consumption: 6.5W





**ADVANCE REPLACEMENT**

## Easy 5MP – Fixed Lens



### IV-BUF365MPE-LT

- 1/2.7"/5MP/CMOS
- Type: **Bullet**
- Axis: 3-Axis, Digital WDR
- **Focus: 3.6mm**, Iris: F2.0
- Angle of view: 79.7°
- **Zoom: Fixed**
- Colour: 0.01 Lux (F2.0, AGC ON)
- 0 lux with IR
- Up to 4 OSDs
- Up to **30m (98ft)** IR distance
- Ultra265, H.264, MJPEG
- Dual streams, IP67
- MicroSD, up to 256GB
- DC 12V, PoE
- Power Consumption: 4W



### IV-DF285MPLT-CA

- 1/2.7"/5MP/CMOS
- Type: **Dome**
- Axis: 2-Axis, Digital WDR
- **Focus: 2.8mm**, Iris: F2.0
- Angle of view: 105.3°
- **Zoom: Fixed**
- Colour: 0.01 Lux (F2.0, AGC ON)
- 0 lux with IR
- Up to 4 OSDs
- Up to **30m (98ft)** IR distance
- Ultra265, H.264, MJPEG
- Dual streams, IP67, IK10
- MicroSD, up to 256GB
- DC 12V, PoE
- Power Consumption: 4W



### IV-DEF285MP-LT

- 1/2.7"/5MP/CMOS
- Type: **Turret Dome**
- Axis: 3-Axis, Digital WDR
- **Focus: 2.8mm**, Iris: F2.0
- Angle of view: 105.3°
- **Zoom: Fixed**
- Colour: 0.01 Lux (F2.0, AGC ON)
- 0 lux with IR
- Up to 4 OSDs
- Up to **30m (98ft)** IR distance
- Ultra265, H.264, MJPEG
- Dual streams, IP67
- MicroSD, up to 256GB
- DC 12V, PoE
- Power Consumption: 4W



### IV-BU271355MPM-LT

- 1/2.7"/5MP/CMOS
- Type: **Bullet**
- Axis: 3-Axis, Digital WDR
- **Focus: 2.8~12mm**, Iris: F1.8
- Angle of view: 25.4°~105.3°
- **Zoom: Motorized**
- Colour: 0.01 Lux (F1.8, AGC ON)
- 0 lux with IR
- Up to 4 OSDs
- Up to **30m (98ft)** IR distance
- Ultra265, H.264, MJPEG
- Dual streams, IP67
- MicroSD, up to 256GB
- DC 12V, PoE
- Power Consumption: 7W

## Easy 8MP – Fixed Lens



### IV-BF408MPLT-CA

- 1/3"/8MP/CMOS
- Type: **Bullet**
- Axis: 3-Axis, 120dB True WDR
- **Focus: 4.0mm**, Iris: F2.0
- Angle of view: 86.5°
- **Zoom: Fixed**
- Colour: 0.05 Lux (F2.0, AGC ON)
- 0 lux with IR
- Up to 4 OSDs
- Up to **30m (98ft)** IR distance
- Ultra265, H.265, H.264, MJPEG
- Dual Streams, IP67
- MicroSD, up to 256GB
- DC 12V, PoE
- Power Consumption: 5.5W



### IV-BF288MP-LT

- 1/3"/8MP/CMOS
- Type: **Bullet**
- Axis: 3-Axis, 120dB True WDR
- **Focus: 2.8mm**, Iris: F2.0
- Angle of view: 112.7°
- **Zoom: Fixed**
- Colour: 0.05 Lux (F2.0, AGC ON)
- 0 lux with IR
- Up to 4 OSDs
- Up to **30m (98ft)** IR distance
- Ultra265, H.265, H.264, MJPEG
- Triple streams, IP67
- MicroSD, up to 256GB
- DC 12V, PoE
- Power Consumption: 5.5W



### IV-DF288MPLT-CA

- 1/3"/8MP/CMOS
- Type: **Dome**
- Axis: 2-Axis, 120dB True WDR
- **Focus: 2.8mm**, Iris: F2.0
- Angle of view: 112.7°
- **Zoom: Fixed**
- Colour: 0.05 Lux (F2.0, AGC ON)
- 0 lux with IR
- Up to 4 OSDs
- Up to **30m (98ft)** IR distance
- Ultra265, H.265, H.264, MJPEG
- Triple streams, IP67, IK10
- MicroSD, up to 256GB
- DC 12V, PoE
- Power Consumption: 5.5W



### IV-DEF288MP-LT

- 1/3"/8MP/CMOS
- Type: **Turret Dome**
- Axis: 3-Axis, 120dB True WDR
- **Focus: 2.8mm**, Iris: F2.0
- Angle of view: 112.7°
- **Zoom: Fixed**
- Colour: 0.05 Lux (F2.0, AGC ON)
- 0 lux with IR
- Up to 4 OSDs
- Up to **30m (98ft)** IR distance
- Ultra265, H.265, H.264, MJPEG
- Triple streams, IP67
- MicroSD, up to 256GB
- DC 12V, PoE
- Power Consumption: 5W



### IV-DV27135MPLT-CA

- 1/2.7"/5MP/CMOS
- Type: **Dome**
- Axis: 3-Axis, Digital WDR
- **Focus: 2.8~12mm**, Iris: F1.6
- Angle of view: 25.4°~105.3°
- **Zoom: Motorized**
- Colour: 0.005 Lux (F1.6, AGC ON)
- 0 lux with IR
- Up to 4 OSDs
- Up to **30m (98ft)** IR distance
- Ultra265, H.265, H.264, MJPEG
- Dual streams, IP67, IK10
- MicroSD, up to 256GB
- DC 12V, PoE
- Power Consumption: 8.7W

## Easy 5MP – Motorized



**Cyber security**

- Data protection
- Limited Access
- Identity Authentication

### Image Distortion Correction



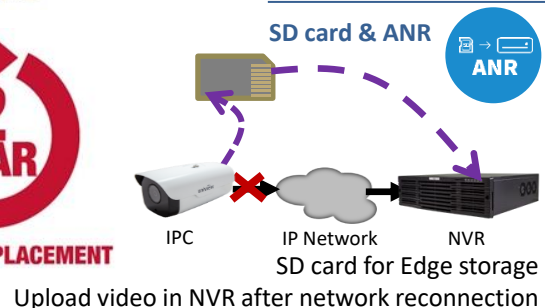
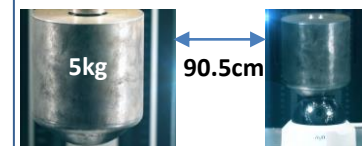
**Wide temperature**

Extreme operation temperature test for all outdoor products

Wide voltage Idea for power instability

**IK10 Vandal proof**

IDView Domes work normally in the IK10 test



**Network disconnection detection**

Automatically reset network module or reset IPC once network disconnection detected

**IP67 water proof**

**Micro Coaxial Cable**

To compare with FFC cable Micro Coaxial Cable can achieve higher EMC level

## Easy Series Cameras with Color-Low-Light



**IV-BUF28CLL4MP-LT**

- 1/3"/4MP/CMOS
- Type: **Bullet**
- Focus: **2.8mm**, Iris: F1.6
- Angle of view: 101.1°
- Low illumination characteristics: **Color Low-Light**
- **Zoom: Fixed**
- Colour: 0.003Lux ( F1.6, AGC ON)
- 0 lux with IR
- 9:16 Corridor Mode Supported
- Up to **50m (164ft)** IR range
- Ultra265,H.265, H.264, MJPEG
- Dual Streams, IP67
- MicroSD, up to 256GB
- DC 12V, PoE
- Power Consumption: 6W



**IV-DF28CLL4MP-LT**

- 1/3"/4MP/CMOS
- Type: **Dome**
- Focus: **2.8mm**, Iris: F1.6
- Angle of view: 101.1°
- Low illumination characteristics: **Color Low-Light**
- **Zoom: Fixed**
- Colour: 0.003Lux ( F1.6, AGC ON)
- 0 lux with IR
- 9:16 Corridor Mode Supported
- Up to **30m (98ft)** IR range
- Ultra265,H.265, H.264, MJPEG
- Dual Streams, IP67, IK10
- MicroSD, up to 256GB
- DC 12V, PoE
- Power Consumption: 6W



**IV-DEF28CLL4MP-LT**

- 1/3"/4MP/CMOS
- Type: **Turret Dome**
- Focus: **2.8mm**, Iris: F1.6
- Angle of view: 105.3°
- Low illumination characteristics: **Color Low-Light**
- **Zoom: Fixed**
- Colour: 0.005Lux ( F1.6, AGC ON)
- 0 lux with IR
- **Built-in Mic**
- Up to **30m (98ft)** IR range
- Ultra265,H.265, H.264, MJPEG
- Dual Streams, IP67
- MicroSD, up to 256GB
- DC 12V, PoE
- Power Consumption: 6W



**IV-BUF28CLL5MP-LT**

- 1/3"/5MP/CMOS
- Type: **Bullet**
- Focus: **2.8mm**, Iris: F1.6
- Angle of view: 101.1°
- Low illumination characteristics: **Color Low-Light**
- **Zoom: Fixed**
- Colour: 0.003Lux ( F1.6, AGC ON)
- 0 lux with IR
- 9:16 Corridor Mode Supported
- Up to **50m (164ft)** IR range
- Ultra265,H.265, H.264, MJPEG
- Dual Streams, IP67
- MicroSD, up to 256GB
- DC 12V, PoE
- Power Consumption: 6W



**IV-DEV28124MP-LT**

- 1/3"/4MP/CMOS
- Type: **Turret Dome**
- Focus: **2.8~12mm**, Iris: F1.6
- Angle of view: 102.79°~ 30.86°
- Low illumination characteristics: **Color Low-Light**
- **Zoom: Motorized**
- Colour: 0.003Lux ( F1.6, AGC ON)
- **Built-in Mic**
- 9:16 Corridor Mode Supported
- Up to **40m (131ft)** IR range
- Ultra265,H.265, H.264, MJPEG
- Dual Streams, IP67
- MicroSD, up to 256GB
- DC 12V, PoE
- Power Consumption: 6W

A new generation of IDView patented technology, Image processing technology, automatically adjust image quality.



**Intelligent Algorithm U-ISP®**

**Reduce Smearing**

**Control sharpness**

**Reduce noise**



**IV-BF364MPPR-CA**

- 1/2.7"/4MP/CMOS
- Type: **Bullet**
- Axis: 3-Axis, 120dB True WDR
- **Focus: 3.6mm**, Iris: F2.0
- Angle of view: 86.4°
- **Zoom: Fixed**
- Colour: 0.01 Lux (F2.0, AGC ON)
- 0 lux with IR
- Up to 8 OSDs
- Up to **30m (98ft)** IR distance
- Ultra265, H.264, MJPEG
- Triple streams, IP67
- Audio I/O – Built-in Mic
- DC 12V, PoE
- Power Consumption: 6W



**IV-DF284MPPR-CA**

- 1/2.7"/4MP/CMOS
- Type: **Dome**
- Axis: 3-Axis, 120dB True WDR
- **Focus: 2.8mm**, Iris: F2.0
- Angle of view: 104.4°
- **Zoom: Fixed**
- Colour: 0.03 Lux (F1.6, AGC ON)
- 0 lux with IR
- Up to 8 OSDs
- Up to **30m (98ft)** IR distance
- Ultra265, H.264, MJPEG
- Triple streams, IP67, IK10
- MicroSD, up to 256GB
- DC 12V, PoE
- Power Consumption: 5W



**IV-DEF284MPPR-CA**

- 1/2.7"/4MP/CMOS
- Type: **Turret Dome**
- Axis: 3-Axis, 120dB True WDR
- **Focus: 2.8mm**, Iris: F2.0
- Angle of view: 104.4°
- **Zoom: Fixed**
- Colour: 0.03 Lux (F2.0, AGC ON)
- 0 lux with IR
- Up to 8 OSDs
- Up to **30m (98ft)** IR distance
- Ultra265, H.264, MJPEG
- Triple streams, IP67
- Audio I/O – Built-in Mic
- DC 12V, PoE
- Power Consumption: 5W

## 5MP – Fixed Lens

## Prime Series (Normal) – Vari-Focal, Motorized Lens



**IV-DEF285MPPR-UN**

- 1/2.7"/5MP/CMOS
- Type: **Turret Dome**
- Axis: 3-Axis, 120dB True WDR
- **Focus: 2.8mm**, Iris: F2.0
- Angle of view: 105.6°
- **Zoom: Fixed**
- Colour: 0.01Lux (F2.0, AGC ON)
- 0 lux with IR, Up to 8 OSDs
- Up to **30m (98ft)** IR distance
- Ultra 265, H.265, H.264, MJPEG
- Triple streams, IP67
- Micro SD, up to 128 GB
- **Built-in Mic**
- DC 12V, PoE
- Power Consumption: 5.5W



**IV-BU28124MPPR-CA**

- 1/3"/4MP/CMOS
- Type: **Bullet**
- Axis: 3-Axis, 120dB True WDR
- **Focus: 2.8~12mm**
- Angle of view: 98.26°~ 31.35°
- **Zoom: Motorized**
- Colour: 0.003Lux (F1.6, AGC ON)
- 0 lux with IR, Up to 8 OSDs
- Up to **50m (164ft)** IR distance
- Ultra 265, H.265, H.264, MJPEG
- Triple streams, IP67
- Micro SD, up to 256GB
- **Audio I/O 1/1**
- DC 12V, PoE
- Power Consumption: 9.5W



**IV-DV28124MPPR-CA**

- 1/3"/4MP/CMOS
- Type: **Dome**
- Axis: 3-Axis, 120dB True WDR
- **Focus: 2.8~12mm**
- Angle of view: 98.26°~ 31.35°
- **Zoom: Motorized**
- Colour: 0.003Lux (F1.6, AGC ON)
- 0 lux with IR, Up to 8 OSDs
- Up to **30m (98ft)** IR distance
- Ultra 265, H.265, H.264, MJPEG
- Triple streams, IP67, IK10
- Micro SD, up to 256GB
- **Audio I/O 1/1**
- DC 12V, PoE
- Power Consumption: 8.7W



**IV-DEV28124MPPR-UN**

- 1/3"/4MP/CMOS
- Type: **Turret Dome**
- Axis: 3-Axis, 120dB True WDR
- **Focus: 2.8~12mm**
- Angle of view: 98.26°~ 31.35°
- **Zoom: Motorized**
- Colour: 0.003Lux (F1.6, AGC ON)
- 0 lux with IR, Up to 8 OSDs
- Up to **30m (98ft)** IR distance
- Ultra 265, H.265, H.264, MJPEG
- Triple streams, IP67
- Micro SD, up to 256GB
- **Built-in Mic**
- DC 12V, PoE
- Power Consumption: 8.16W



**IV-BV28125MPPR-LR-UN**

- 1/2.7"/5MP/CMOS
- Type: **Bullet**
- Axis: 3-Axis, 120dB True WDR
- **Focus: 2.8~12mm**
- Angle of view: 96.23°~ 31.69°
- **Zoom: Motorized**
- Colour: 0.003Lux (F1.6, AGC ON)
- 0 lux with IR, Up to 8 OSDs
- Up to **50m (164ft)** IR distance
- Ultra 265, H.265, H.264, MJPEG
- Triple streams, IP67
- Micro SD, up to 256GB
- **Audio I/O 1/1**
- DC 12V, PoE
- Power Consumption: 9.5W



**IV-BV28128MPPR-UN**

- 1/2"/8MP/CMOS
- Type: **Bullet**
- Axis: 3-Axis, 120dB True WDR
- **Focus: 2.8~12mm**
- Angle of view: 114.8° ~ 47.3°
- **Zoom: Motorized**
- Colour: 0.001Lux (F1.5, AGC ON)
- 0 lux with IR, Up to 8 OSDs
- Up to **50m (164ft)** IR distance
- Ultra 265, H.265, H.264, MJPEG
- Triple streams, IP67
- Micro SD, up to 256GB
- **Two-way audio**
- DC 12V, PoE
- Power Consumption: 10W





**Color Low-Light** | F1.2 big iris lens



Improves low-light sensitivity Up to 0.0005 lux

**Color Low-Light** | Large size sensor



BSI sensor, improves the utilization of light  
Higher sensitivity, higher SN ratio

### Normal IPC



### IDView Color Low-Light



#### IV-BUF282MP-starlight

- 1/2.7"/2MP/CMOS
- Type: **Bullet**
- Axis: 3-Axis, 120dB True WDR
- **Focus: 2.8mm**, Iris: F1.6
- Low illumination characteristics: **Color Low-Light**
- Angle of view: 112.7°
- **Zoom: Fixed**
- Colour: 0.005Lux ( F1.6, AGC ON)
- 0 lux with IR
- Up to 4 OSDs
- Up to **50m (164ft)** IR distance
- Ultra 265, H.265, H.264
- Triple streams, IP67
- DC 12V, PoE
- Power Consumption: 6W



#### IV-DEF282MP-starlight

- 1/2.7"/2MP/CMOS
- Type: **Eyeball Dome**
- Axis: 3-Axis, 120dB True WDR
- **Focus: 2.8mm**, Iris: F1.6
- Low illumination characteristics: **Color Low-Light**
- Angle of view: 112.7°
- **Zoom: Fixed**
- Colour: 0.005Lux ( F1.6, AGC ON)
- 0 lux with IR
- Up to 4 OSDs
- Up to **30m (98ft)** IR distance
- Ultra 265, H.265, H.264
- Triple streams, IP67
- DC 12V, PoE
- Power Consumption: 4.5W



#### IV-BUF284MP-starlight

- 1/3"/4MP/CMOS
- Type: **Bullet**
- Axis: 3-Axis, 120dB True WDR
- **Focus: 2.8mm**, Iris: F1.6
- Low illumination characteristics: **Color Low-Light**
- Angle of view: 112.7°
- **Zoom: Fixed**
- Colour: 0.005Lux ( F1.6, AGC ON)
- 0 lux with IR
- Up to 4 OSDs
- Up to **50m (164ft)** IR distance
- Ultra 265, H.265, H.264, MJPEG
- Triple streams, IP67
- DC 12V, PoE
- Power Consumption: 6W

## Prime Series with Color-Low-Light – 5 & 8MP Fixed Lens



#### IV-BUF28CLL5MP-CA

- 1/2.7"/5MP/CMOS
- Type: **Bullet**
- Axis: 3-Axis, 120dB True WDR
- **Focus: 2.8mm**, Iris: F1.6
- Low illumination characteristics: **Color Low-Light**
- Angle of view: 96.1°
- **Zoom: Fixed**
- Colour: 0.003Lux (F1.6, AGC ON)
- 0 lux with IR, Up to 8 OSDs
- Up to **40m (131ft)** IR distance
- Ultra 265, H.265, H.264, MJPEG
- Triple streams, IP67
- **Built-in Mic**
- MicroSD, up to 256GB
- DC 12V, PoE
- Power Consumption: 5W



#### IV-DF28CLL5MPPR-UN

- 1/2.7"/5MP/CMOS
- Type: **Dome**
- Axis: 3-Axis, 120dB True WDR
- **Focus: 2.8mm**, Iris: F1.6
- Low illumination characteristics: **Color Low-Light**
- Angle of view: 96.1°
- **Zoom: Fixed**
- Colour: 0.003Lux (F1.6, AGC ON)
- 0 lux with IR, Up to 8 OSDs
- Up to **30m (98ft)** IR distance
- Ultra 265, H.265, H.264, MJPEG
- Triple streams, IP67, IK10
- **Two-way audio**
- MicroSD, up to 256GB
- DC 12V, PoE
- Power Consumption: 4.5W



#### IV-DEF28CLL5MP-UN

- 1/2.7"/5MP/CMOS
- Type: **Turret Dome**
- Axis: 3-Axis, 120dB True WDR
- **Focus: 2.8mm**, Iris: F1.6
- Low illumination characteristics: **Color Low-Light**
- Angle of view: 91.6°
- **Zoom: Fixed**
- Colour: 0.003Lux (F1.6, AGC ON)
- 0 lux with IR, Up to 8 OSDs
- Up to **30m (98ft)** IR distance
- Ultra 265, H.265, H.264, MJPEG
- Triple streams, IP67
- **Built-in Mic**
- MicroSD, up to 256GB
- DC 12V, PoE
- Power Consumption: 4.0W



#### IV-BF28CLL8MP-CA

- 1/2.7"/8MP/CMOS
- Type: **Bullet**
- Axis: 3-Axis, 120dB True WDR
- **Focus: 2.8mm**, Iris: F2.0
- Low illumination characteristics: **Color Low-Light**
- Angle of view: 112.4°
- **Zoom: Fixed**
- Colour: 0.01Lux (F2.0, AGC ON)
- 0 lux with IR, Up to 8 OSDs
- Up to **30m (98ft)** IR distance
- Ultra 265, H.265, H.264, MJPEG
- Triple streams, IP67
- **Built-in Mic**
- MicroSD, up to 256GB
- DC 12V, PoE
- Power Consumption: 10.5W



#### IV-DEF28CLL8MP-CA

- 1/2.7"/8MP/CMOS
- Type: **Turret Dome**
- Axis: 3-Axis, 120dB True WDR
- **Focus: 2.8mm**, Iris: F2.0
- Low illumination characteristics: **Color Low-Light**
- Angle of view: 112.4°
- **Zoom: Fixed**
- Colour: 0.01Lux (F2.0, AGC ON)
- 0 lux with IR, Up to 8 OSDs
- Up to **30m (98ft)** IR distance
- Ultra 265, H.265, H.264, MJPEG
- Triple streams, IP67
- **Built-in Mic**
- MicroSD, up to 256GB
- DC 12V, PoE
- Power Consumption: 5.0W



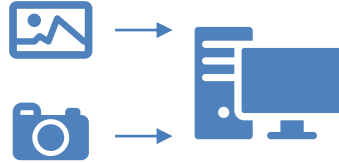
Clear



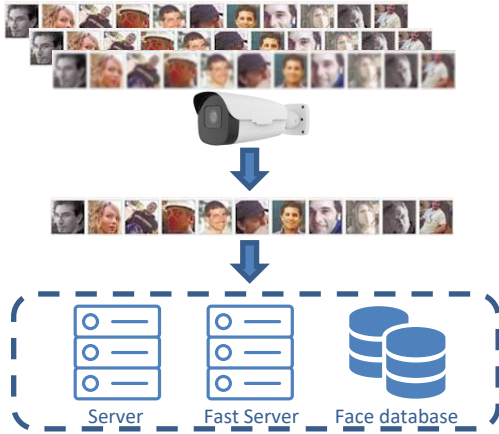
Fast



Reduce cost



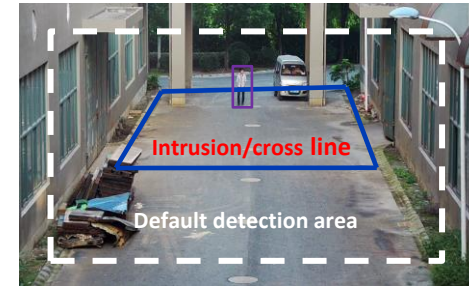
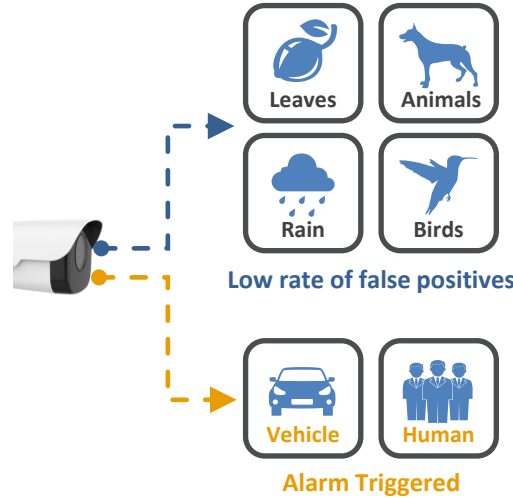
1. Face recognition result
2. Face attributes (gender, age, glasses)
3. Search picture by picture



## Perimeter Protection

Filter out other target | Precise target classification

Based on Intelligent chip and algorithm



## Prime Series with Color-Low-Light – 5 & 8MP Vari-Focal, Motorized Lens



**IV-BU2713CLL5MP-CA**



**IV-DV2713CLL5MP-CA**



**IV-DE2812CLL5MP-UN**



**IV-BV2812CLL8MP-CA**



**IV-DV2812CLL8MP-CA**



**IV-DEV2812CLL8MP-CA**

- 1/2.7"/5MP/CMOS
- Type: **Bullet**
- Axis: 3-Axis, 120dB True WDR
- **Focus: 2.7~13.5mm**
- **Color Low-Light**
- Angle of view: 106.25°~ 30.42°
- Zoom: **Motorized**
- 0.002Lux (F1.2, AGC ON)
- 0 lux with IR, Up to 8 OSDs
- Up to **50m (164ft)** IR range
- Ultra 265, H.265, H.264, MJPEG
- Triple streams, IP67
- Micro SD, up to 256GB
- **Two-way audio**
- DC 12V, PoE
- Power Consumption: 5.5W

- 1/2.7"/5MP/CMOS
- Type: **Dome**
- Axis: 3-Axis, 120dB True WDR
- **Focus: 2.7~13.5mm**
- **Color Low-Light**
- Angle of view: 106.25°~ 30.42°
- Zoom: **Motorized**
- 0.002Lux (F1.2, AGC ON)
- 0 lux with IR, Up to 8 OSDs
- Up to **40m (131ft)** IR range
- Ultra 265, H.265, H.264, MJPEG
- Triple streams, IP67, IK10
- Micro SD, up to 256GB
- **Built-in Mic**
- DC 12V, PoE
- Power Consumption: 7.0W

- 1/2.7"/5MP/CMOS
- Type: **Turret Dome**
- Axis: 3-Axis, 120dB True WDR
- **Focus: 2.7~13.5mm**
- **Color Low-Light**
- Angle of view: 106.25°~ 30.42°
- Zoom: **Motorized**
- 0.002Lux (F1.2, AGC ON)
- 0 lux with IR, Up to 8 OSDs
- Up to **40m (131ft)** IR range
- Ultra 265, H.265, H.264, MJPEG
- Triple streams, IP67, IK10
- Micro SD, up to 256GB
- **Built-in Mic**
- DC 12V, PoE
- Power Consumption: 7.0W

- 1/2.8"/8MP/CMOS
- Type: **Bullet**
- Axis: 3-Axis, 120dB True WDR
- **Focus: 2.8~12mm**
- **Color Low-Light**
- Angle of view: 107.4°~ 29.2°
- Zoom: **Motorized**
- 0.003Lux (F1.6, AGC ON)
- 0 lux with IR, Up to 8 OSDs
- Up to **50m (164ft)** IR range
- Ultra 265, H.265, H.264, MJPEG
- Triple streams, IP67, IK10
- Micro SD, up to 256GB
- **Two-way audio**
- DC 12V, PoE
- Power Consumption: 10.5W

- 1/2.8"/8MP/CMOS
- Type: **Dome**
- Axis: 3-Axis, 120dB True WDR
- **Focus: 2.8~12mm**
- **Color Low-Light**
- Angle of view: 107.4°~ 29.2°
- Zoom: **Motorized**
- 0.002Lux (F1.2, AGC ON)
- 0 lux with IR, Up to 8 OSDs
- Up to **40m (131ft)** IR range
- Ultra 265, H.265, H.264, MJPEG
- Triple streams, IP67, IK10
- Micro SD, up to 256GB
- **Built-in Mic**
- DC 12V, PoE
- Power Consumption: 9.0W

- 1/2.8"/8MP/CMOS
- Type: **Turret Dome**
- Axis: 3-Axis, 120dB True WDR
- **Focus: 2.8~12mm**
- **Color Low-Light**
- Angle of view: 107.4°~ 29.2°
- Zoom: **Motorized**
- 0.002Lux (F1.2, AGC ON)
- 0 lux with IR, Up to 8 OSDs
- Up to **40m (131ft)** IR range
- Ultra 265, H.265, H.264, MJPEG
- Triple streams, IP67, IK10
- Micro SD, up to 256GB
- **Built-in Mic**
- DC 12V, PoE
- Power Consumption: 9.0W



### Beautiful



No cable exposed troubles

### Economic



Don't need to use the junction box

### Concealment



Exquisite and compact structure



### IV-DF284MP-CCM-UN

- 1/3"/4MP/CMOS
- Type: **Vandal Dome**
- Axis: 3-Axis, 120dB True WDR
- **Focus: 2.8mm**, Iris: F2.0
- Angle of view: 95.8°
- **Zoom: Fixed**
- Colour: 0.01 Lux (F2.0, AGC ON)
- 0 lux with IR, Up to 4 OSDs
- **Cable Free**
- Up to **30m (98ft)** IR distance
- Ultra 265, H.265, H.264, MJPEG
- **Built-in Mic Supported**
- Triple streams
- MicroSD, up to 256GB
- DC 12V, PoE
- Power Consumption: 5.5W



### IV-DVF28124MP-CCM-UN

- 1/3"/4MP/CMOS
- Type: **Vandal Dome**
- Axis: 3-Axis, 120dB True WDR
- **Focus: 2.8 ~ 12mm**, Iris: F2.0
- Angle of view: 98.26° ~ 31.35°
- **Zoom: Motorized**
- Colour: 0.003 Lux (F1.6, AGC ON)
- 0 lux with IR, Up to 4 OSDs
- **Cable Free**
- Up to **30m (98ft)** IR distance
- Ultra 265, H.265, H.264, MJPEG
- Triple streams, IP66, IK10
- MicroSD, up to 256GB
- DC 12V, PoE
- Power Consumption: 8.7W

## Prime Series with Color Hunter

## Color Hunter



### IV-BF405MP-247color

- 1/2.7"/5MP/CMOS
- Type: **Bullet**
- Axis: 3-Axis, 120dB True WDR
- **Focus: 4.0mm**, Iris: F1.0
- Angle of view: 80.2°
- **Zoom: Fixed**
- Colour: 0.001Lux (F1.0, AGC ON)
- Up to 8 OSDs
- **Color Hunter**
- Up to **30m (98ft)** IR distance
- Ultra 265, H.265, H.264, MJPEG
- **Two-way audio**
- Triple streams, IP67, IK10
- MicroSD, up to 256GB
- DC 12V, PoE
- Power Consumption: 9.0W



### IV-DEF285MP-247color

- 1/2.7"/5MP/CMOS
- Type: **Turret Dome**
- Axis: 3-Axis, 120dB True WDR
- **Focus: 2.8mm**, Iris: F1.0
- Angle of view: 102.0°
- **Zoom: Fixed**
- Colour: 0.001Lux (F1.0, AGC ON)
- Up to 8 OSDs
- **Color Hunter**
- Up to **30m (98ft)** IR distance
- Ultra 265, H.265, H.264, MJPEG
- **Built-in Mic**
- Triple streams, IP67
- MicroSD, up to 256GB
- DC 12V, PoE
- Power Consumption: 7.5W



### High resolution

5MP (2880\*1620)@25fps  
16:9 picture improves user experience



### 7\*24 hours colorful image

Deliver colorful images in ultra-low light environment  
Built-in two warm light LEDs  
LED distance 30M



### Multiple interfaces

Audio I/O(MIC), Alarm I/O  
Built-in SD card slot



### Big Iris

F1.0 big iris lens  
Let more light in



### 120dB true WDR

Support 120dB true WDR  
Optimize both the dark and light areas



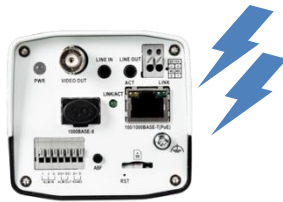
### Smart Intrusion Prevention

Focus on human and vehicle Reduce false alarm





Stepping motor applied on all PTZ



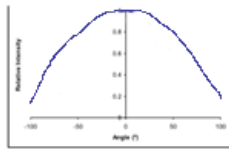
Surge protection 6KV for network interface



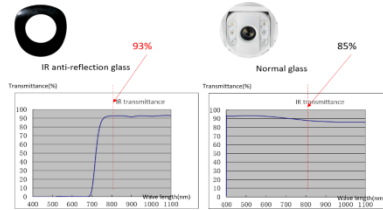
Optical fiber port(SFP)  
Product name with G



Video output(BNC)



Car-grade LED  
Better light compensation  
Longer service time(60000 hours)



Anti-reflection glass  
Increase the infrared transmittance as 8%



Alarm in/out  
Audio in/out  
Multiple interfaces



Power output (DC12V)

### PRO Series 2MP – Long IR Distance, License Plate Capture

### PRO Series - 360° IP Camera (5MP, 12MP)



ADVANCE REPLACEMENT



IV-BV28122MP-PRO-UN

- 1/1.8"/2MP/CMOS
- Type: **Bullet**
- Low illumination characteristics: **Color Low-Light**
- Axis: 3-Axis, 120dB True WDR
- **Focus: 2.8 ~ 12mm**, Iris: F1.5
- Angle of view: 87.5°~31.2°
- **Zoom: 4X optical zoom**
- Color: 0.0005Lux (F1.5, AGC ON)
- 0 lux with IR, Up to 8 OSDs
- Up to **100m (295ft)** IR distance
- Ultra265, H.264, MJPEG
- **Frame Rate: 60 fps**
- Triple streams, IP67
- Audio I/O - 1/1
- MicroSD, up to 256GB
- AC 24V, DC 12V, PoE
- Power Consumption: 13.7W



IV-BV22X2LLC2MP-656

- 1/1.8"/2MP/CMOS
- Type: **Bullet**
- Low illumination characteristics: **Color Low-Light**
- Axis: 3-Axis, 120dB True WDR
- **Focus: 6.5~143mm**, Iris: F1.5~3.4
- Angle of view: 59° ~ 3°
- **Zoom: 22X optical zoom**
- Color: 0.0005Lux (F1.5, AGC ON)
- 0 lux with IR, Up to 8 OSDs
- Up to **200m (656ft)** IR distance,
- Ultra 265, H.265, H.264, MJPEG
- Triple streams, IP67
- Audio I/O - 1/1
- MicroSD, up to 256GB
- AC 24V, DC 12V, PoE
- Power Consumption: 21W



IV-5MP360EU-UN

- 1/2.8"/5MP/CMOS
- Type: **Fisheye**
- Axis: N/A, 120dB True WDR
- Focus: 1.4mm, Iris: F2.0
- **Angle of view: 360°**
- Zoom: Fixed
- Colour: 0.01 Lux (F2.0, AGC ON)
- 0 lux with IR
- **Up to 10m (33ft)** IR distance
- Ultra265, H.264, MJPEG
- Triple streams, IP66, IK10
- MicroSD, up to 256GB
- DC 12V, PoE
- Built-in Mic
- Power Consumption: 11W
- **Dewarp by NVR**



IV-12MP360FE-UN

- 1/1.7"/12MP/CMOS
- Type: **Fisheye**
- Axis: 3-Axis, Digital WDR
- Focus: 1.8mm, Iris: F2.4
- **Angle of view: 360°**
- Zoom: Fixed
- Colour: 0.05 Lux (F2.4, AGC ON)
- 0 lux with IR
- **Up to 10m (33ft)** IR distance
- Ultra265, H.264, MJPEG
- 8 Streams (1 fisheye view (Triple streams), 1 panoramic view, 4 PTZ View)
- IP66, IK10
- MicroSD, up to 256GB
- DC 12V, PoE
- Power Consumption: 9.6W
- **Built-in dewarping**

**NAS**



**IV-EN424L**

- Processor: **Intel Dual Xeon**
- Memory RAM: Min **8GB**
- OS: **Windows 10/Server**
- NIC Card: 10/100/1000
- Graphics Card: NVIDIA or ATI Graphics card
- Internal Storage Capacity (NAS optional): up to **144TB**
- Raid Level: Raid 0, 1, 5, 6
- Backup Devices : NAS, USB, WAN
- **USB ports: 6**



**IV-Enterprise**

- Processor: **Intel Dual Xeon**
- Memory RAM: Min **8GB**
- OS: **Windows 10/Server**
- NIC Card: 10/100/1000
- Graphics Card: NVIDIA or ATI Graphics card
- Internal Storage Capacity (NAS optional): up to **42TB**
- Raid Level: Raid 0, 1, 5, 6
- Backup Devices : NAS, USB, WAN
- **USB ports: 6**

**PC Based NVR**



**IV-Performance**

- Processor: **Intel i7**
- Memory RAM: Min **4GB**
- OS: **Windows 10/Server**
- NIC Card: 10/100/1000
- Graphics Card: NVIDIA or ATI Graphics card
- Internal Storage Capacity (NAS optional): up to **36TB**
- Raid Level: Raid 0, 1, 5, 6
- Backup Devices : NAS, USB, WAN
- **USB ports: 6**



**IV-Server-2**

- Processor: **Intel i5**
- Memory RAM: Min **2GB**
- OS: **Windows 10**
- NIC Card: 10/100/1000
- Graphics Card: NVIDIA or ATI Graphics card
- Internal Storage Capacity (NAS optional): up to **18TB**
- Raid Level: N/A
- Backup Devices : NAS, USB, WAN
- **USB ports: 2**

**Client Server**



**IV-Client Server**

- Processor: **Intel i5**
- Memory RAM: Min **2GB**
- OS: **Windows 10**
- NIC Card: 10/100/1000
- Graphics Card: Intel Chip Set
- Internal Storage Capacity (NAS optional): up to **12TB**
- Raid Level: N/A
- Backup Devices : NAS, USB, WAN
- **USB ports: 2**

Anti-Explosion Stainless Steel Housing with IR:  
**IV-OH-ATEX316IR**  
Anti-Explosion Stainless Steel Housing with Wiper & IR:  
**IV-OH-ATEX316IR-Wiper**



Anti-Corrosion Stainless Steel Housing with IR:  
**IV-OH-ATCS316IR**  
Anti-Corrosion Stainless Steel Housing with Wiper & IR:  
**IV-OH-ATCS316IR-Wiper**



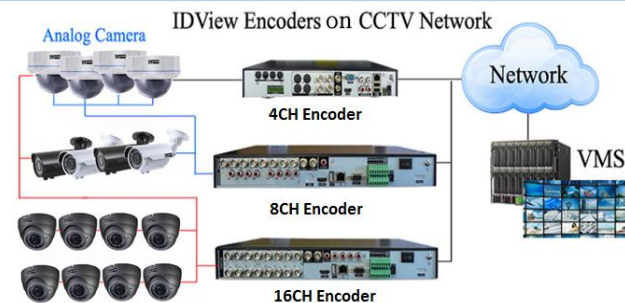
Anti-Explosion Stainless Steel Pan/Tilt Camera Housing Station:  
**IV-OHS-PT01-ATEX**



**Software Partners and Access Control Partners**



**Use Encoders to Leverage Your Legacy System**



**IV-EN811FH-VIUL (8CH)**  
**IV-EN1611FH-VIUL (16CH)**

1080P resolution, support  
HD/CVI/TVI/CVBS/IP

1080P resolution, support  
AHD/CVI/TVI/960H/IP

**IV-411FA-MXHD5MP (4CH)**  
**IV-811FA-MXHD5MP (8CH)**  
**IV-1611FA-MXHD5MP (16CH)**  
**IV-3211FA-MXHD5MP (32CH)**

**VIDEOINSIGHT**  
Campus Security Simplified



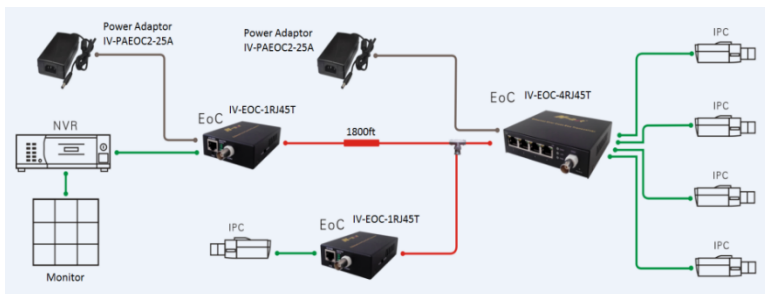
- Digital IDView is uniquely positioned to help you with your IP integration projects.
- Our regional managers, along with our rep firms, visit your states frequently to help with project specifications.
- Our technical support team, with over 100 years of IP experience, is on standby to assist.
- We partner with software providers to offer you turnkey solutions for projects of all sizes.
- We offer project registration, systems design, webinars, CEU training for you, your staff, and your customers.
- Our IP solutions strive to maintain open protocol, ONVIF standard, along with video analytics to give you a competitive edge.



## Ethernet Over Coax EoC Transceiver

Local site: IV-EoC-1RJ45T with power adaptor

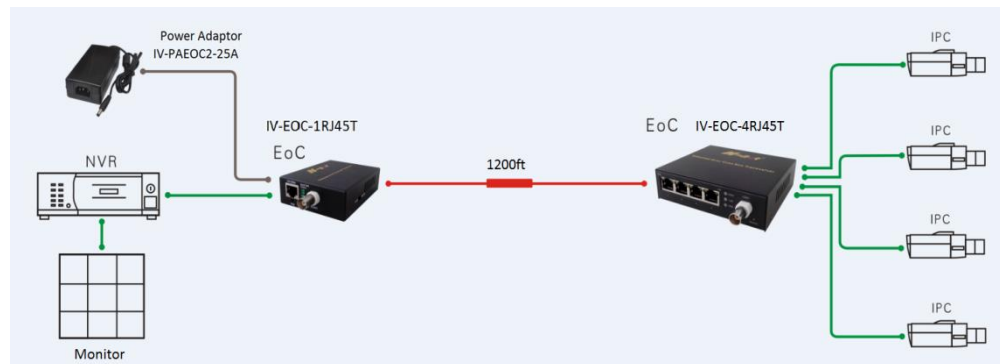
Remote site: Additional power at 1800 feet, provides power to a local IPC.



The EoC Ethernet over Coax Transceiver with PoE from IDView is a compact converter that allows 10/100Base-T to be transmitted using coax cable. EoC devices are typically used in legacy installations where existing coax is re-upgrade to IP cameras. Class 2 power of 56 VDC is delivered to one transceiver, which distributes it to up to four (available separately) and their PoE cameras. This transceiver is easy to use with no IP or MAC addressing required power and link connectivity/activity for RJ45 and BNC ports.

Local site: IV-EoC-1RJ45T with power adaptor is to power remote site and cameras

Remote site: distance to 1200ft, apply a IV-EoC-4RJ45T, with 4 cameras powered by the local adaptor power



IV-EoC-1RJ45T

1CH EoC Transceiver



IV-EoC-4RJ45T

EoC transceiver with 4 PoE Port & 1 BNC



IV-EoC-4BNC

EoC transceiver with 4 BNC & 1 RJ45



IV-PAEOC2-25A

Power Adaptor, 52VDC, 2.5A

## PoE Switch



IV-NT6POE-UN

- Ports - 6x100Mbps network ports (RJ45), including 4 PoE ports
- MAC - 2K
- Forwarding rate - 0.90Mpps
- Switching capacity - 1.2Gbps
- PoE - 802.3at/af, Max capacity: 65W, Max capacity for single port: 30W
- Mean Time Between Failure (MTBF) - >50000 hours
- DC voltage/AC voltage - AC: 100-240V, 50/60Hz
- Operating temperature - 0°C-40°C (32°F-104°F)
- Operating humidity - 10%~90% (noncondensing)



IV-NT10POE-UN

- Ports - 10x100Mbps network ports (RJ45), including 8 PoE ports
- MAC - 8K
- Forwarding rate - 1.49Mpps
- Switching capacity - 2Gbps
- PoE - 802.3at/af, Max capacity: 120W, Max capacity for single port: 30W
- Mean Time Between Failure (MTBF) - >50000 hours
- DC voltage/AC voltage - AC: 100-240V, 50/60Hz
- Operating temperature - 0°C-40°C (32°F-104°F)
- Operating humidity - 10%~90% (noncondensing)



IV-NT16POE-UN

- Ports - 16x100Mbps PoE ports (RJ45)+2x1000Mbps Combo Ports
- MAC - 16K
- Forwarding rate - 5.36Mpps
- Switching capacity - 7.2Gbps
- PoE - 802.3at/af, Max capacity: 250W, Max capacity for single port: 30W
- Mean Time Between Failure (MTBF) - >50000 hours
- DC voltage/AC voltage - AC: 100-240V, 50/60Hz
- Operating temperature - 0°C-40°C (32°F-104°F)
- Operating humidity - 10%~90% (noncondensing)



IV-NT24POE-UN

- Ports - 24x100Mbps PoE ports (RJ45)+2x1000Mbps Combo ports
- MAC - 16K
- Forwarding rate - 6.55Mpps
- Switching capacity - 8.8Gbps
- PoE - 802.3at/af, Max capacity: 370W, Max capacity for single port: 30W
- Mean Time Between Failure (MTBF) - >50000 hours
- DC voltage/AC voltage - AC: 100-240V, 50/60Hz
- Operating temperature - 0°C-40°C (32°F-104°F)
- Operating humidity - 10%~90% (noncondensing)



**ALPR System Architecture Overview**

**A. Recording License Plate**

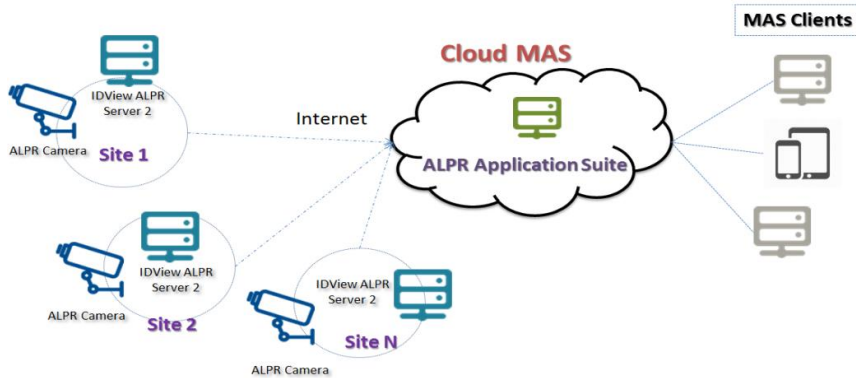


**B. Capture**



**C. For good guy/bad guy management, use A + B**

**Architecture Overview -Cloud MAS**



Capable to manages data coming from unlimited numbers of ALPR sites/servers



ALPR good guy/bad guy analysis is performed on local servers and Cloud MAS is used for operational management



**IP License Plate Camera: 2, 3, 4MP**

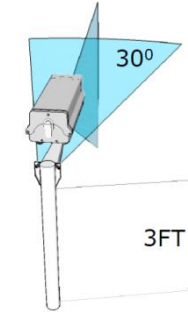


**IV-LPR4502MP-30X**

- 2MP, 1920 x 1080P @30fps
- 4.3 ~ 129mm lens / 30X zoom
- 30pcs IR LEDs, 120fts IR distance
- 65.6° to 2.07° horizontal field of view
- WDR, DC12V, PoE, IP67, IK10, ONVIF

**IV-LPR4704MP-30X**

- 4MP, 2688 x 1520 @15fps
- 4.3 ~ 129mm lens / 30X zoom
- 30pcs IR LEDs, 120fts IR distance
- 61.7° to 2.07° horizontal field of view
- WDR, DC12V, PoE, IP67, IK10, ONVIF



Height: 3ft above from ground  
Align Angle: 0° ~30° from front  
Aim Down: 0° ~30° down max  
Speed: 20MH Recommend



**Super White Flux LED LPR Camera**

**Analog License Plate Camera**



**IV-LP1616**

- 600TVL color license plate capture camera
- Up to 16MPH (30 KPH) capture speed
- 36pcs IR LEDs, 50ft IR distance
- 9~22 mm lens, 0~27ft capture range, IP66



**IV-LPR622-TVI**

- 720P HD-TVI, Motion detection, Privacy mask
- Ultra low light 0.001 Lux, 6-22mm
- Up to 131ft IR distance, IP66, DC12V
- Day/Night, DWDR, HLC, AGC, OSD
- Noise reduction, 16x shutter speed

Highly Cost-Effective

Smart Functions, Affordable Price



Factory



Museum



Villa



Airport

360°

- Avoid entering to dangerous area
- Reduce the number of patrols



Values

- Early Warning
- Reduce the number of patrols



IV-DEF282MP-FH

- 1/2.9" 2MP 4-in-1 D-WDR
- Type: **Dome**
- Focus: **2.8mm**
- 66ft IR distance
- IP67, DC 12V



IV-BUF282MP-FH-247color

- 1/2.9" 2MP 4-in-1 D-WDR
- Type: **Dome**
- Focus: **2.8mm**
- **Color-Low-Light**
- 2 PCS 3500K soft warm light
- 66ft IR distance
- IP67, DC 12V



IV-DEF285MP-FH

- 1/2.5" 5MP 4-in-1 D-WDR
- Type: **Dome**
- Focus: **2.8mm**
- 66ft IR distance
- IP67, DC 12V



IV-BUF285MP-FH

- 1/2.5" 5MP 4-in-1 D-WDR
- Type: **Bullet**
- Focus: **2.8mm**
- 2pcs Array IR LEDs
- 78ft IR distance
- IP67, DC 12V



IV-BUF285MP-FH-247color

- 1/3" 5MP 4-in-1 D-WDR
- Type: **Bullet**
- Focus: **2.8mm**
- **Color-Low-Light**
- 2 PCS 3500K soft warm light
- 66ft IR distance
- IP67, DC 12V



IV-BV28122(5)MP-FH-DV

- 1/2.8" 2(5)MP 4-in-1 D-WDR
- Type: **Bullet**
- Focus: **2.8~12mm**
- **Motorized**
- white color
- **Auto Focus**
- **98~131ft** IR distance
- IP67, DC 12V



IV-DV720IR-FH-AF-DV

- 1/2.8" 2MP 4-in-1 D-WDR
- Type: **Dome**
- Focus: **2.8~12mm**
- **Motorized**
- **Motion Detection**
- 98ft IR distance
- IP67, DC 12V/AC24V



IV-DEV271355MP-FH-AF

- 1/2.8" 5MP 4-in-1 D-WDR
- Type: **Turret Dome**
- Focus: **2.7~13.5mm**
- **Motor Zoom & Auto Focus Lens**
- 98ft IR distance
- IP67, DC 12V

Analog Camera - 8MP



IV-DEF4K288MP-FHEN

- 8MP 4-in-1 D-WDR
- Type: **Turret Dome**
- 4K@ HD-TVI/AHD 5MP@ CVI
- Focus: **2.8mm**
- 90ft IR distance
- 24pcs IR LEDs
- IP66, DC 12V
- AGC, AWB, 2D-DNR



IV-BU4K288MP-FHEN

- 8MP 4-in-1 D-WDR
- Type: **Bullet**
- 4K@ HD-TVI/AHD 5MP@ CVI
- Focus: **2.8mm**
- 68ft IR distance
- 12pcs IR LEDs
- IP66, DC 12V
- AGC, AWB, 2D-DNR





## HD Mobile DVR Surveillance Solution



## 4ch And 8ch Mobile DVR



### IV-MDVRM3401 (4CH)

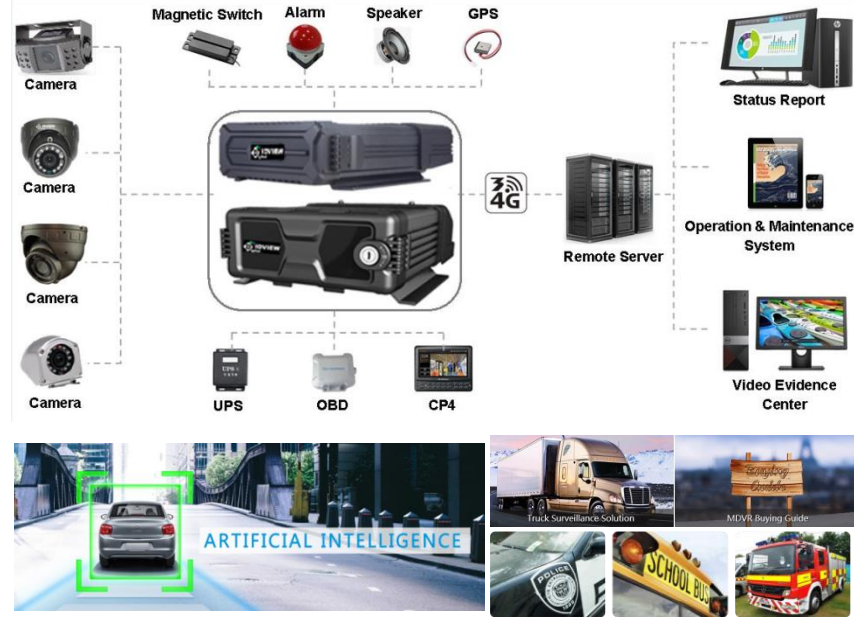
- 4ch 1080P AHD + 1ch 1080P IP
- GPS for location tracking
- WIFI for video files download
- Built-in 4G for live view & remote management
- Dual SD card for main recording



### IV-MDVRM5804 (8CH)

- 8ch 1080P AHD + 4ch 1080P IP
- GPS for location tracking
- WIFI for video files download
- Built-in 4G for live view & remote management
- Dual SD card for main recording

## System Diagram



IDView's Intelligent Mobile Solution offers fleet management and vehicle tracking capability and is suitable for all types of commercial vehicles. It offers unique solutions as the following :

- Added Security: Intelligent tracking of bad driver behavior, facial recognition
- Built in Reliability with 24X7 watchdog function built in
- Evidence management both in the cloud and locally
- Maintenance made easy for system health check
- EZ Event search



## Powerful Vehicle Tracking Management System



IDView's vehicle tracking management system includes the proven performance of a onboard control unit, digital video recorder, plus powerful software and ITS (Intelligent Transportation System) technology which meets the demanding needs of fleet administrators and vehicle operators worldwide.

## Vehicle Side View Camera and 180 ° fisheye Camera (Bus / School Bus / Truck)



### IV-SE836R-AHDH

- 1/3" 2MP CMOS
- 1920 x 1080P @ AHD
- Fixed Lens: **3.6mm**
- 12pcs IR LEDs, audio (optional)
- -22°F to +158°F, IP66



### IV-MSV368R-AHDH

- 1/3" 2MP CMOS
- 1920 x 1080P @ AHD
- Fixed Lens: **3.6mm**
- -22°F to +158°F, IP67



### IV-MSV236R-AHDH

- 1/3" 2MP CMOS
- 1920 x 1080P @ AHD
- Fixed Lens: **3.6mm**
- Audio (optional)
- -22°F to +158°F, IP66



### IV-MSV1A158-AHDH

- 1/3" 2MP CMOS
- 1920 x 1080P @ AHD
- Fixed Lens: **1.58mm**
- IP67



### IV-MD1836R-AHDH

- 1/3" 2MP CMOS
- 1920 x 1080P @ AHD
- Fixed Lens: **3.6mm**
- 6pcs IR LEDs
- IR distance up to **15ft**



### IV-MB236R-AHDH

- 1/3" 2MP CMOS
- 1920 x 1080P @ AHD
- Fixed Lens: **3.6mm**
- IP67



### IV-MEK236R-AHDH

- 1/3" 2MP CMOS
- 1920 x 1080P @ AHD
- Fixed Lens: **1.58mm**
- IP67



### IV-SD3136R-AHDH

- 1/3" 2MP CMOS
- 1920 x 1080P @ AHD
- Fixed Lens: **3.6mm**
- 10pcs IR LEDs
- R distance up to **45ft**





**IV-SID-HD65**

- **65" Smart Interactive Display**
- Backlight - D-LED
- **Resolution - 3840x2160 (4K)**
- **Response Time - 8ms**
- CPU Working Frequency - 1.5GHz
- CPU Core – Quad Core
- RAM - 3GB DDR4 32GB eMMC
- OS - Android 8.0
- Sensing Type - Infrared Touch Frame
- **Theory Clicks - More than 60 million times in the same location**
- HDMI x3; VGA x1; AUDIO IN x1; YPBPR x1; AV IN x1; TOUCH-USB x2; OPS x1; USB x4
- **Power Supply - 100 to 240 V AC**



**IV-SID-HD75**

- **75" Smart Interactive Display**
- Backlight - D-LED
- **Resolution - 3840x2160 (4K)**
- **Response Time - 8ms**
- CPU Working Frequency - 1.5GHz
- CPU Core – Quad Core
- RAM - 3GB DDR4 32GB eMMC
- OS - Android 8.0
- Sensing Type - Infrared Touch Frame
- **Theory Clicks - More than 60 million times in the same location**
- HDMI x3; VGA x1; AUDIO IN x1; YPBPR x1; AV IN x1; TOUCH-USB x2; OPS x1; USB x4
- **Power Supply - 100 to 240 V AC**



**IV-SID-HD86**

- **86" Smart Interactive Display**
- Backlight - D-LED
- **Resolution - 3840x2160 (4K)**
- **Response Time - 8ms**
- CPU Working Frequency - 1.5GHz
- CPU Core – Quad Core
- RAM - 3GB DDR4 32GB eMMC
- OS - Android 8.0
- Sensing Type - Infrared Touch Frame
- **Theory Clicks - More than 60 million times in the same location**
- HDMI x3; VGA x1; AUDIO IN x1; YPBPR x1; AV IN x1; TOUCH-USB x2; OPS x1; USB x4
- **Power Supply - 100 to 240 V AC**

**65" 75" 86" 4K Ultra HD Display and Smooth Writing Brings Extraordinary Interactive Experience**



**20 points of touch**



**4K Ultra HD, LED 100,000 hrs**



**Energy Star, & Ecodesign certified**

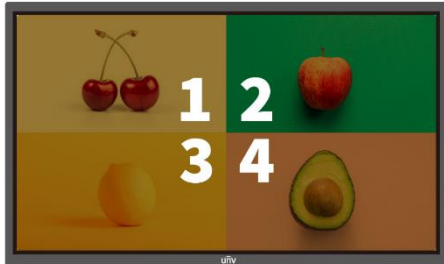


**Ambient light sensors**



**Embedded with Powerful Android System, Brings Efficient Collaboration**

## Multi-screen Interaction without Cable Limitation



**Easy to Write, Simple to Edit, Save**

- ❖ Support 20 points writing by touch pen or finger.
- ❖ Support quick gesture
- ❖ Comments Mode in any interface

- ❖ Easy connections.
- ❖ Share photos and documents wirelessly on the big screen via PC, smart phones and PAD.
- ❖ Support up to 4 devices screen mirroring at the same time and provide you with a clear comparison.
- ❖ Two-way operations create flexible and efficient interactions.

## Android & Windows System

**The screen can support dual systems, android & windows system can be switched by one-key operation. (with Pluggable PC Module)**



**Pluggable PC Module**



**ANDROID**



**Windows 10**



# Ultra Narrow Bezel LCD Video Wall

Immersive display effect brings you extraordinary visual experience.



IV-MW-A46/49/55-B1



IV-MW-A46-B1

- 46" LCD Video Wall
- Backlight - LED
- Resolution - 1920\*1080
- Bezel Width - 3.5mm
- Display Color - 16.7M
- Contrast - 4000:1
- Response Time - 8ms
- Signal Input - 1\*VGA, 1\*DVI, 2\*HDMI, 1\*USB
- Signal Output- 1\*HDMI
- Consumption - 145W
- Power Supply - 100 ~ 240V AC
- Dimension(W\*H\*D) - (40.2"x22.7"x4.9")



IV-MW-A49-B1

- 49" LCD Video Wall
- Backlight - LED
- Resolution - 1920\*1080
- Bezel Width - 3.5mm
- Display Color - 16.7M
- Contrast - 4000:1
- Response Time - 8ms
- Signal Input - 1\*VGA, 1\*DVI, 2\*HDMI, 1\*USB
- Signal Output- 1\*HDMI
- Consumption - 150W
- Power Supply - 100 ~ 240V AC
- Dimension(W\*H\*D) - (42.4"x23.9"x4.9")



IV-MW-A55-B1

- 55" LCD Video Wall
- Backlight - LED
- Resolution - 1920\*1080
- Bezel Width - 3.5mm
- Display Color - 16.7M
- Contrast - 4000:1
- Response Time - 8ms
- Signal Input - 1\*VGA, 1\*DVI, 2\*HDMI, 1\*USB
- Signal Output- 1\*HDMI
- Consumption - 210W
- Power Supply - 100 ~ 240V AC
- Dimension(W\*H\*D) - (47.8"x27.0"x4.9")

## Display & Control Features and Solution

### Anti-glare Surface Treatment Ensure Image Sharpness



Normal



IDView

### Reduce Blue Light To Protect Eyes



Normal



IDView

### Fast Response Time Ghosting In Image Ghosting

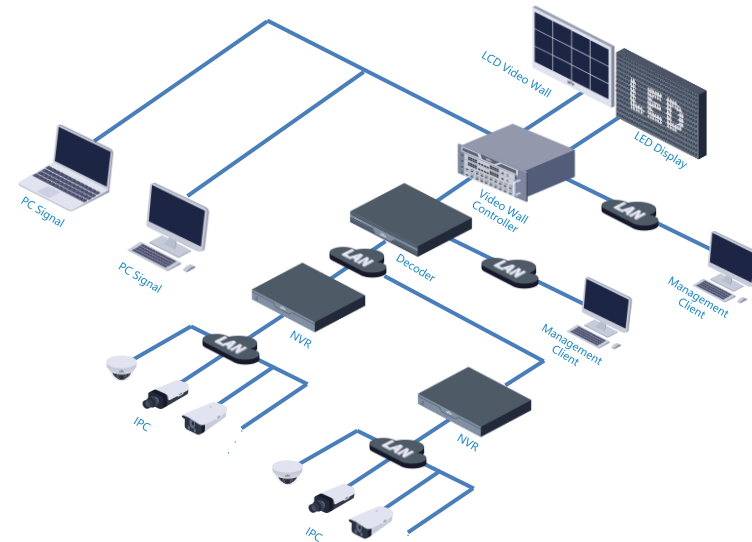


Normal



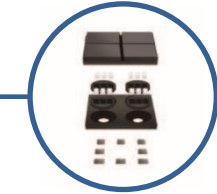
IDView

### Solution for Surveillance Center



## Indoor Fine Pixel LED Display (Contact us if you need further Information)

- Available Pixel Pitch: 0.9, 1.2, 1.4, 1.5, 1.6, 1.8mm
- 16:9 FHD & 4K Pixel to Pixel Resolution
- Front Installation and Maintenance
- Cable Free & Fanless Design

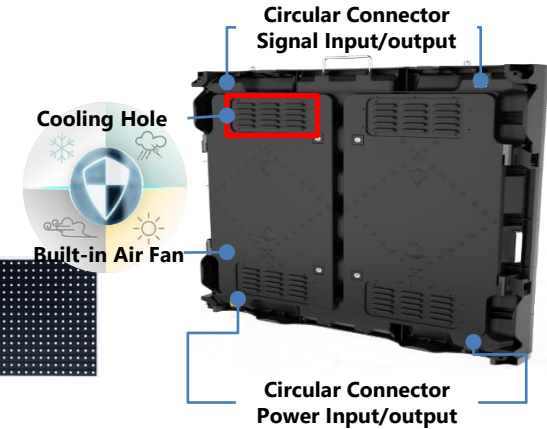


- Ultra Thin and Light Body
- Smart Module
- 0.9mm Mini LED
- Common Cathode Technology
- IMD 4 in 1 Integrated Packaging
- Optional Dual Supply and Signal for Redundancy



## Design for Outdoor Application

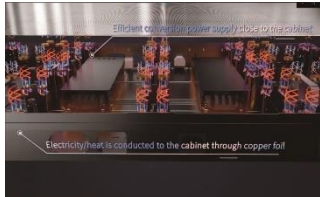
**IP65**  
Module Ingress protection



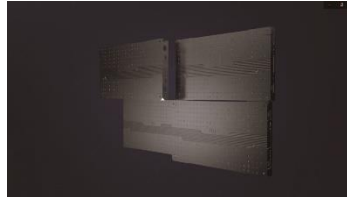
## LED Displays Features

## Application Scenarios

### Modular Design, Fanless Silent Design, Cabinet Industrial Cooling

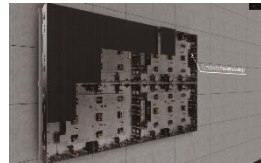
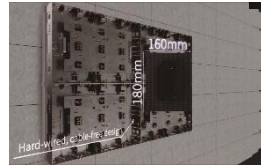


Normal

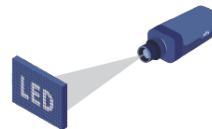


IDView

### Front Maintenance Mode Easy To Install



### Support Network Camera Real-time Monitoring Screen Remotely



Indoor Ad



Education

### Image Enhancement, HDR Wide Dynamic Processing Technology



Normal



IDView



Live Studio



Concert/Theater