

Phylogenetic relationships in the *Drosophila melanogaster* species subgroup: An ultrastructural histochemical study of the secretory granules in the larval salivary gland cells of *D. orena* and *D. sechellia*

GEORGE N. THOMOPOULOS

Department of Genetics, Development & Molecular Biology, School of Biology,
Aristotle University, 541 24 Thessaloniki, Greece

Received: 27 November 2003

Accepted after revision: 2 February 2004

The *melanogaster* subgroup is divided into two complexes: the *melanogaster* complex, which includes *D. melanogaster*, *D. sechellia*, *D. simulans*, and *D. mauritiana*, with secretory granules consisted mainly of a filamentous material, and the *yakuba* complex, which includes *D. erecta*, *D. orena*, *D. yakuba* and *D. teissieri*, with secretory granules consisted mainly of a granular material. The secretory granules of *D. orena* consist almost exclusively of a granular material with high electron density which after periodic acid-thiocarbohydrazide-silver proteinate (PA-TCH-SP) staining displays intense reactivity; sometimes a small “knob” - like PA-TCH-SP negative structure is revealed. The secretory granules of *D. sechellia* consist mainly of a filamentous material with medium to high electron density, while occasionally, in the periphery of the secretory granules, an electron lucent material is seen, which after post-fixation of tissues with OsO₄ disclosed high electron density and a granular appearance. Following the PA-TCH-SP staining, the filamentous material is positive, while the peripheral granular material is negative. The revised phylogenetic diagram of the *melanogaster* subgroup, based on the morphological and histochemical characteristics of the secretory granules of the salivary gland cells, and the proposed direction of evolution, is as follows: *D. erecta* \ *D. orena* \ *D. yakuba*, *D. teissieri* and *hypothetical species II* which yields *D. melanogaster* and *D. sechellia* which in turn yields *D. simulans* and *D. mauritiana*.

Key words: *Drosophila*, *melanogaster* subgroup, phylogenetic relationships.

INTRODUCTION

The phylogenetic relationships and the mode of evolution among several *Drosophila* species have attracted the interest of evolutionary biologists for many years (e.g. Throckmorton, 1975; Ashburner *et al.*, 1984; Lemeunier *et al.*, 1986; Singh, 1989; Grimaldi, 1990; Thomas & Hunt, 1993; Caccone *et al.*, 1996; Kliman *et al.*, 2000; Remsen & O’Grady, 2002; Kastanis *et al.*, 2003). A variety of scientific approaches has been used to elucidate the phylogenetic relationships in different *Drosophila* species groups and subgroups. Such approaches include chromosomal banding patterns (e.g. Lemeunier & Ashburner, 1976, 1984; O’Grady *et al.*, 2001), repro-

ductive isolation (e.g. Lachaise *et al.*, 1986; Lee & Watanabe, 1987; Coyne, 1989; Ting *et al.*, 2000), analysis of cuticular hydrocarbons (Jallon & David, 1987; Coyne & Charlesworth, 1997), analysis of chorion proteins (Kalantzi-Makri *et al.*, 1985), morphological and histochemical characteristics of the secretory granules in larval salivary gland cells (Thomopoulos, 1987), two-dimensional electrophoresis and allozyme variation (e.g. Cariou, 1987; Lee & Watanabe, 1987; Spicer, 1988; Coulthart & Singh, 1988; Matsuo *et al.*, 1999), interspecific ovarian transplantation (Lamnissou & Zouros, 1989), analysis of mitochondrial and nuclear DNA sequences (e.g. Solignac & Monnerot, 1986; Solignac *et al.*, 1986; Coyne & Kreitman, 1986; Satta & Takahata, 1990; Andersson & Lambertsson, 1991; Hale & Singh, 1991; Nigro *et al.*, 1991; DeSalle, 1992; Peixo-

to *et al.*, 1992; Hey & Kliman, 1993; Kliman & Hey, 1993; Pissios & Scouras, 1993; Jeffs *et al.*, 1994; Ross *et al.*, 1994; Hilton *et al.*, 1995; Shibata & Yamazaki, 1995; Caccone *et al.*, 1996; Ballard *et al.*, 2000; Arhontaki *et al.*, 2002; Tsujino *et al.*, 2002; Kastanis *et al.*, 2003), rRNA sequencing (Pelandakis & Solignac, 1993; Lohe & Roberts, 2000), Southern analysis of heat shock proteins (Molto *et al.*, 1994), and DNA hybridization and cloning (Caccone *et al.*, 1988, 1992; Hartl *et al.*, 1994). Despite all these efforts, the conclusions concerning the interrelationships among the different *Drosophila* species and especially the direction of evolution are not definite.

The secretory granules in the larval salivary gland cells of every *Drosophila* species studied so far, disclose a different morphological appearance as well as a distinctive distribution of the vic-glycol groups of the complex carbohydrates (Thomopoulos & Kastritsis, 1979; Thomopoulos, 1987; Thomopoulos *et al.*, 1989, 1992). The unique morphology of the secretory granules provides us with a very special “tool” to characterize each species and to attempt the construction of a phylogenetic tree in different *Drosophila* species subgroups. The above-mentioned features have already been used in the investigation of the phylogenetic relationships among six species (available at that time) of the *Drosophila melanogaster* species subgroup (Thomopoulos, 1987). In the present study I report on:

- i) the morphology of the secretory granules of the larval salivary gland cells of *Drosophila oreana* and *D. sechellia*,
- ii) the distribution of the vic-glycol groups of complex carbohydrates in their secretory granules, and
- iii) the revised phylogenetic tree of the eight species of the *Drosophila melanogaster* species subgroup.

MATERIALS AND METHODS

The *Drosophila* species used in this study were obtained from the Department of Genetics, University of Patras, Greece. The insects were raised as described earlier (Thomopoulos & Kastritsis, 1979). The salivary glands were dissected out in cold *Drosophila* saline solution, pH 7.0, and immediately fixed for 1 h in cold Karnovsky's fixative (Karnovsky, 1965) buffered with 0.2 M phosphate buffer, pH 7.4. After washing with 0.2 M phosphate buffer, the glands were postfixed in aqueous 2% OsO₄ solution

for 1h, rinsed with distilled water, and placed in an aqueous 0.5% uranyl acetate solution for 14-18 h. For the histochemical detection of complex carbohydrates the previous two steps were omitted. The glands were dehydrated through an ethanol series, infiltrated, and embedded in Spurr's resin (Spurr, 1969). The polymerization period was 9 h at 70-71 °C. Silver to pale gold sections (from 5-8 blocks for each species, containing 2-3 glands each) were cut using glass knives and mounted on copper, stainless steel or gold grids.

For the morphological examination of the secretory granules the sections were stained with uranyl acetate-lead citrate (Reynolds, 1963). For the localization of the complex carbohydrates with vicinal glycol groups, the periodic acid-thiocarbohydrazide-silver proteinate (PA-TCH-SP) method of Thiery (1967) was used. Control sections were stained only with the thiocarbohydrazide-silver proteinate sequence. The sections were examined and photographed in a JEOL 100B electron microscope. Fifty photographs for each species were used for the estimation of the maximum mean diameter of the secretory granules. Approximately 10 secretory granules (excluding the smaller granules) from each photograph were used for the measurement of their diameter.

RESULTS

The secretory granules are surrounded by a single membrane and their usual shape is oval or spherical. The secretory granules of *D. oreana* are mostly irregularly elongated, but both oval or spherical granules are also seen. The maximum mean diameter of the secretory granules of *D. oreana* (excluding the irregularly elongated granules) reaches 1.86 μm, and that of *D. sechellia* 2.42 μm.

Drosophila oreana

The secretory granules consist almost exclusively of a granular material with high electron density (Fig. 1). There are no differences in the appearance of the secretory granules in the salivary gland cells processed with or without osmium tetroxide, after the initial fixation in Karnovsky's fixative. The granular material after PA-TCH-SP staining displays an intense reactivity (Fig. 2). In a few cases, particularly after PA-TCH-SP staining, a small “knob” - like or “minicap” - like PA-TCH-SP negative structure is revealed (Fig. 3).

All bars represent 1 μ m — FIGS 1-3. *Drosophila orena*.

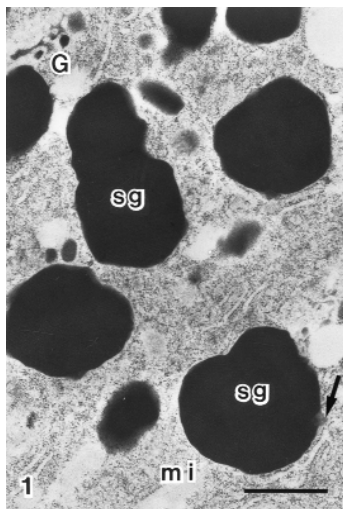


FIG. 1. Secretory granules (sg) displaying a high electron density and consisted of a granular material. In some cases “minicap” - like structures (arrows) are evident in the periphery of the secretory granules. mi=mitochondria, G=Golgi complex. Fixation: Karnovsky's fixative, no post-osmication. Staining: uranyl acetate - lead citrate (UA-LC). x 15,000.

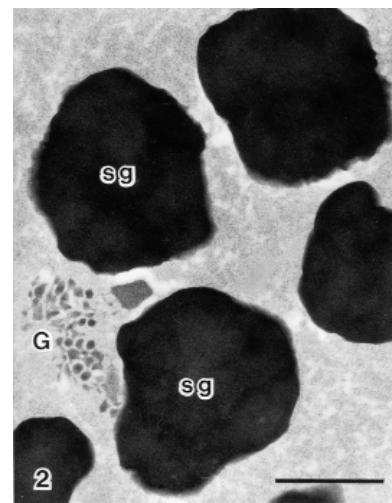
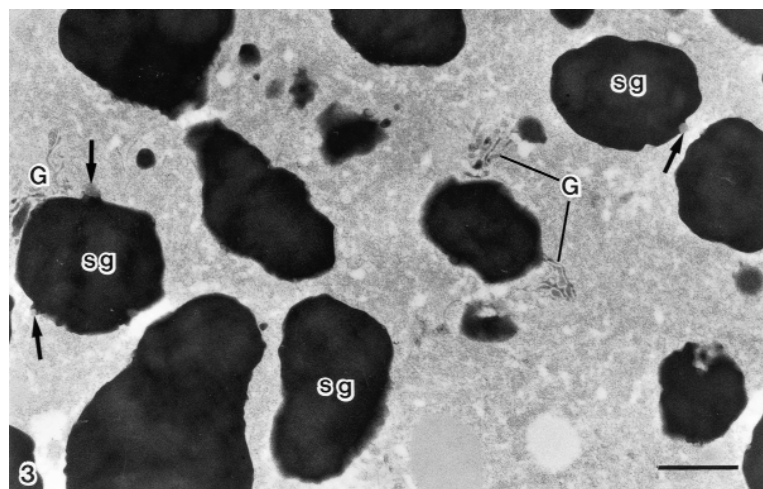


FIG. 2. Granular material of the secretory granules (sg) displaying a strong positive reactivity after PA-TCH-SP staining. G=Golgi complex. Fixation: Karnovsky's fixative, no post-osmication. x 19,700.

FIG. 3. When present, the “minicap” - like structures (arrows) are not stained after PA-TCH-SP treatment. sg=secretory granules, G=Golgi complex. Fixation: Karnovsky's fixative, no post-osmication. x 13,600.



Drosophila sechellia

The secretory granules consist mainly of a filamentous material with a medium to high electron density, while an electron lucent material is seen distributed among the filaments (Fig. 4). Occasionally, in the periphery of the secretory granules another electron lucent material (different from the electron lucent material seen among the filaments) is apparent,

when the salivary gland cells were processed without post-osmication (Fig. 4). When the salivary gland cells were post-fixed with osmium tetroxide, the same material discloses a high electron density and reveals a granular structure (Fig. 5). After PA-TCH-SP staining, the filamentous material is PA-TCH-SP positive, while the peripheral granular material is PA-TCH-SP negative (Fig. 6).

FIGS 4-6. *Drosophila sechellia*.

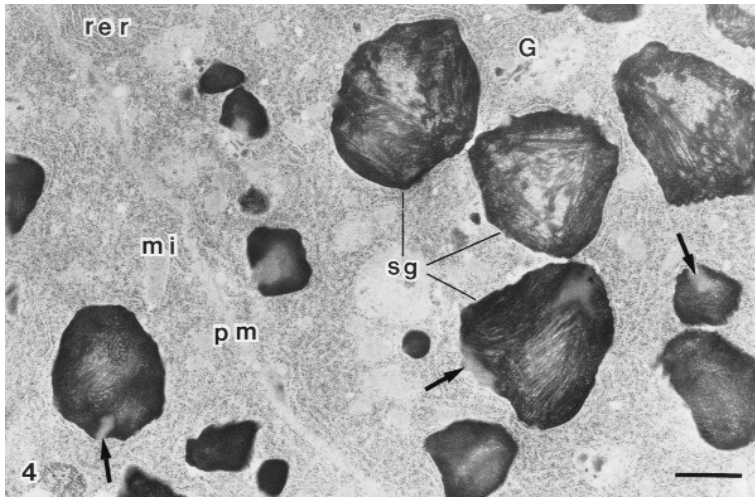


FIG. 4. A filamentous material of medium to high electron density occupying most of the secretory granules (sg), and an electron lucent material among the filaments. The material seen in the periphery of the secretory granules is electron lucent (arrows). rer=rough endoplasmic reticulum, pm=plasma membrane, mi=mitochondria, G=Golgi complex. Fixation: Karnovsky's fixative, no post-osmication. Staining: UA-LC. x 11,000.

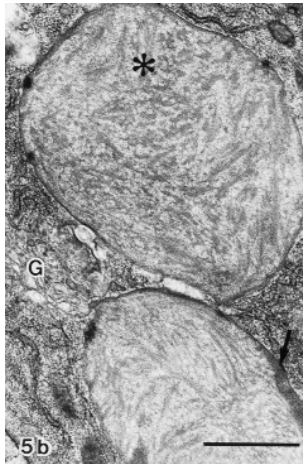
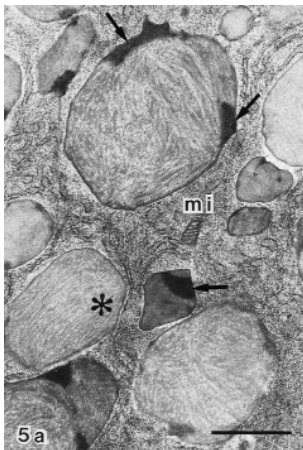


FIG. 5. A peripheral, non-filamentous material (arrows) of the secretory granules (asterisks) displaying a high electron density and revealing a granular structure. G=Golgi complex, mi=mitochondria. Fixation: Karnovsky's fixative plus post-osmication. Staining: UA-LC. a) x 17,500; b) x 20,000.

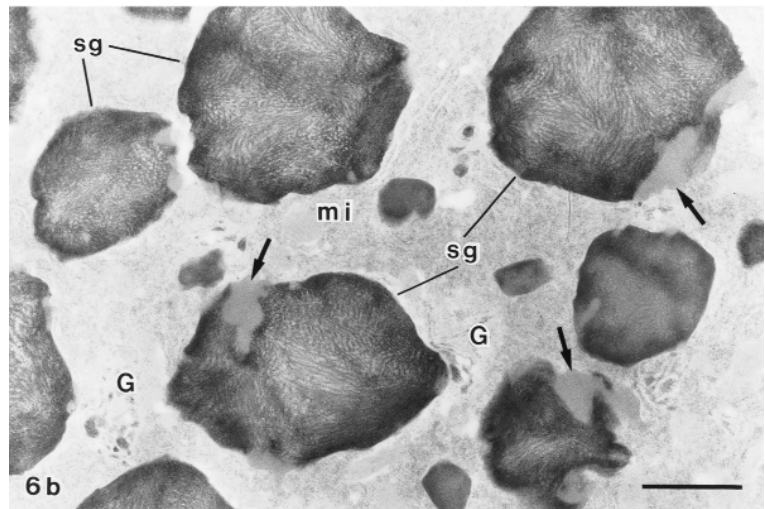
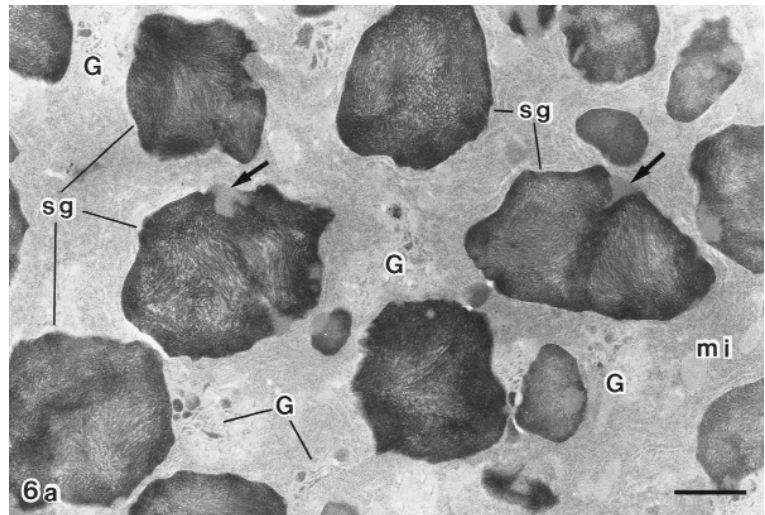


FIG. 6. After PA-TCH-SP staining, the filamentous material of the secretory granules (sg) is positive, while the granular material (arrows) displays no PA-TCH-SP reactivity. G=Golgi complex, mi=mitochondria. Karnovsky's fixative, no post-osmication. a) x 13,200; b) x 17,600.

DISCUSSION

The *melanogaster* subgroup is divided into two complexes: the *melanogaster* complex, which includes *D. melanogaster*, *D. sechellia*, *D. simulans*, and *D. mauritiana*, and the *yakuba* complex, which includes *D. erecta*, *D. orena*, *D. yakuba* and *D. teissieri*. The division of the subgroup into two complexes is in agreement with studies of experimental hybridization: the four species of the *melanogaster* complex readily give hybrids between themselves, but not with the species of the *yakuba* complex (Lemeunier *et al.*, 1986). This division is also supported by the results of other studies, as well (e.g. Eisses *et al.*, 1979; Lemunier & Ashburner, 1976, 1984; Cariou, 1987; Lee & Watanabe, 1987; Thomopoulos, 1987; Russo *et al.*, 1995; Kastanis *et al.*, 2003). Within the *yakuba* complex, the two groups of species (*erecta-orena* and *yakuba-teissieri*) share inversions absent from other species (Ashburner *et al.*, 1984), and a further subdivision is evident: the *erecta-orena* and the *yakuba-teissieri* subclusters (Tsacas & Tsacas, 1984; Cobb *et al.*, 1986; Singh, 1989; Russo *et al.*, 1995; Caccone *et al.*, 1996; Lohe & Roberts, 2000; Kastanis *et al.*, 2003). Caccone *et al.* (1996) have considered the *erecta-orena* subcluster as the deepest one, followed by the *yakuba-teissieri* subcluster, with the *melanogaster* complex (*D. melanogaster*, *D. sechellia*, *D. simulans* and *D. mauritiana*) being the youngest one.

The secretory granules of *Drosophila* salivary gland cells vary considerably in morphology and in the distribution of complex carbohydrates (Thomopoulos & Kastritsis, 1979; Thomopoulos, 1987; Thomopoulos *et al.*, 1989, 1992). These features have been used to establish phylogenetic relationships among six species of the *Drosophila melanogaster* species subgroup available at that time (Thomopoulos, 1987). Predictions that the other two known species of the *melanogaster* subgroup, *D. sechellia* and *D. orena*, should have secretory granules containing a PA-TCH-SP positive filamentous and granular material, respectively, are confirmed in this study (Thomopoulos, 1987).

Based on the findings of this report and the features of the other six species of the *Drosophila melanogaster* species subgroup (Thomopoulos, 1987), it is proposed that:

1. **The hypothetical I species** in the phylogenetic tree of the *melanogaster* species subgroup (Thomopoulos, 1987) **corresponds to *D. orena***, because *D. erecta* and *D. orena* are morphologically and his-

tochemically more similar than is *D. orena* with either *D. yakuba* or *D. teissieri*. The existence of a “minicap” - like PA-TCH-SP negative material in the secretory granules of *D. orena*, similar to the material found in the periphery of the secretory granules in *D. yakuba* and *D. teissieri*, supports the view that the latter two species could be evolved from *D. orena*, and confirms earlier predictions that the secretory granules of the hypothetical I species should contain a small amount of a PA-TCH-SP negative material (Thomopoulos, 1987). It has also been found, using the salivary gland polytene chromosomes, that *D. orena* is very close to *D. erecta* (Ashburner *et al.*, 1984), while, from mtDNA data, it has been calculated that *D. yakuba* and *D. teissieri* differ by about 3% (Caccone *et al.*, 1988). The proposal that *D. erecta* and *D. orena* are closer than is *D. orena* with either *D. yakuba* or *D. teissieri*, is consistent with the concept that the *yakuba* complex splits into two subclusters: the *erecta* subcluster (*D. erecta* and *D. orena*) and the *yakuba* subcluster (*D. yakuba* and *D. teissieri*) (Singh, 1989). The high genetic distance between *D. erecta* and *D. orena* (compared to the other six species of the *melanogaster* subgroup) suggests a relative ancient divergence (Cariou, 1987) which is also supported by satellite DNA (Strachan *et al.*, 1981) and mtDNA (Salignac *et al.*, 1986) data. The genetic distance (ds=0.4) between *D. yakuba* and *D. teissieri*, half between *D. erecta* and *D. orena* (ds=1), indicates a substantial genetic differentiation and a more recent split than that between the *erecta-orena* pair (Cariou, 1987). The same conclusion has also been reached by satellite DNA (Strachan *et al.*, 1981) and ribosomal and histone gene families (Coen *et al.*, 1982) studies. The amylase data have suggested that the first cladogenesis in the *melanogaster* species subgroup would separate *D. erecta* and *D. orena* from the six other species (Dainou *et al.*, 1987). Both molecular (Ashburner *et al.*, 1984) and biogeographical (Lacchaise *et al.*, 1988) data support an initial split between the *erecta* subcluster and the other six species, 15 million years ago (Mya), followed by the divergence between the *yakuba* subcluster and the *melanogaster* complex as recently as 2.5-3.0 Mya.

2. ***Drosophila sechellia* and *D. melanogaster* evolved from the hypothetical II species** (Thomopoulos, 1987) where the filamentous PA-TCH-SP positive material first appeared. The existence of PA-TCH-SP negative areas in the secretory granules of *D. sechellia*, similar to element I found in *D.*

melanogaster (Thomopoulos, 1987), and the complete absence of this material in the secretory granules of *D. simulans* and *D. mauritiana* support the view that the latter two species are closer to each other than to *D. sechellia*. This PA-TCH-SP negative material corresponds to the electron dense, granular material seen in the secretory granules of the salivary gland cells of *D. sechellia* post-fixed with osmium tetroxide, while the same structures disclose no electron density when the salivary gland cells were processed without post-osmication. On the contrary, the element I, found in the secretory granules of the salivary gland cells of *D. melanogaster*, displays an intense electron density with or without osmium tetroxide (Thomopoulos, 1987), indicating that these two morphologically similar materials could have different chemical composition.

The notion that *D. simulans* and *D. mauritiana* are closer to each other than to *D. sechellia*, as inferred from the morphological and histochemical characteristics of the secretory granules, is supported by other data as well (Lachaise *et al.*, 1986; Solignac & Monnerot, 1986; Lee & Watanabe, 1987; Joly, 1987; Coulthart & Singh, 1988; Singh, 1989; Coyne & Charlesworth, 1997; Harr *et al.*, 1998; Kliman *et al.*, 2000; Ting *et al.*, 2000). On the other hand, there are reports supporting the view that *D. simulans* is closer to *D. sechellia* (Coyne & Kreitman, 1986; Cariou, 1987; Palopoli *et al.*, 1996) and *D. mau-*

ritiana is closer to *D. sechellia* (Lemeunier & Ashburner, 1984; Caccone *et al.*, 1988, 1996; Thackeray & Kyriacou, 1990; O'Grady *et al.*, 2001).

Unfortunately, the existing data on the phylogenetic relationships between the species of the *melanogaster* complex are not conclusive. It has been suggested that *D. simulans* (or a common ancestor of *D. simulans*, *D. mauritiana* and *D. sechellia*) gave rise to *D. mauritiana* and *D. sechellia* (Coyne & Kreitman, 1986; Solignac & Monneron, 1986; Coyne, 1989; Sata & Takahata, 1990; Kliman & Hey, 1993), but there are different results contradicting this proposal. Lee & Watanabe (1987) using allozyme genetic distances have concluded that *D. sechellia* stands at a slightly distant place from *D. simulans* and *D. mauritiana*. Lachaise *et al.* (1986) have found that *D. sechellia* is slightly more isolated among *D. sechellia*, *D. mauritiana* and *D. simulans* and that of the four species of the *melanogaster* complex, *D. melanogaster* diverged from a common stem first, followed by *D. sechellia* and, most recently, by *D. simulans* and *D. mauritiana*. More recent results based on microsatellite (Harr *et al.*, 1998) and mtDNA (Kastanis *et al.*, 2003) analyses have supported the view that *D. sechellia* arose first, followed by a split between *D. simulans* and *D. mauritiana*, and therefore, *D. sechellia* can be considered as the ancestral species of *D. simulans* and *D. mauritiana*, in accordance with the results of the present study.

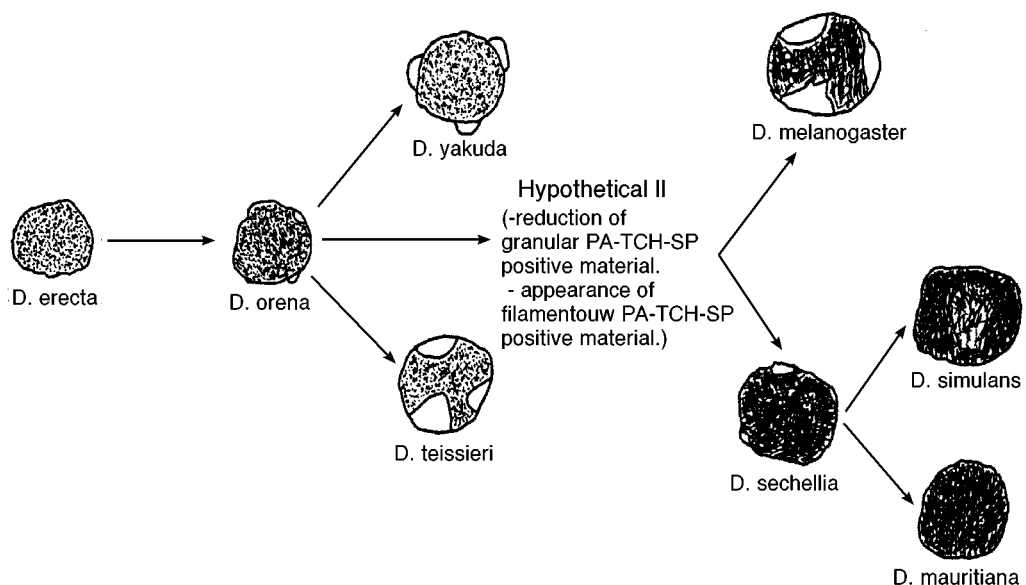


FIG. 7. Schematic presentation of the secretory granules of the species of the *melanogaster* subgroup complex and the proposed interrelationships and direction of evolution among the eight species of this subgroup, based on the ultrastructural morphology of the salivary gland secretory granules and the distribution of the complex carbohydrates. The unshaded areas correspond to the PA-TCH-SP - negative parts of the secretory granules.

Thus, the revised phylogenetic diagram and the proposed direction of evolution is as follows: *D. erecta* \ *D. orena* \ *D. yakuba*, *D. teissieri* and hypothetical species II which yields *D. melanogaster* and *D. sechellia* which in turn yields *D. simulans* and *D. mauritiana* (Fig. 7). Based on the morphological and histochemical characteristics of the secretory granules, it appears that *D. melanogaster* and *D. erecta* are at the opposite ends of the phylogenetic tree of the *melanogaster* species subgroup. The secretory granules of *D. melanogaster* are the most complex ones, consisted of three elements, whereas the secretory granules of *D. erecta* are the simplest ones, consisted only of a PA-TCH-SP positive granular material (Thomopoulos, 1987). This proposal is also supported by other studies, as well. The cytological studies of Lemunier & Ashburner (1976, 1984), for example, have shown that the polytene chromosomes of *D. melanogaster* and *D. erecta* differ by at least seven fixed autosomal inversions. Dowset (1983), using middle repetitive DNA sequences, has also shown that *D. erecta* lacks most of the *D. melanogaster* families, having another set of repetitive families which are absent from the *D. melanogaster* genome.

It has been suggested (Thomopoulos, 1987) that the most simple structure, in this case the secretory granules of *D. erecta*, corresponds to the most primitive form. Tartof (1979) also considered *D. erecta* as the oldest species of the *melanogaster* subgroup, based on the assumption that the species with the simplest rRNA gene structure was the most primitive one. *D. erecta* is an endemic African species and its selection as the most primitive species of the *melanogaster* subgroup is in accordance with the view that this subgroup emerged in Africa (Throckmorton, 1975). Despite the general belief that *D. melanogaster* is the ancestor of the species of the *melanogaster* subgroup, there are reports (Rizki & Rizki, 1980) supporting the view that *D. melanogaster* is the most recently derived species of the subgroup. In the proposed phylogenetic tree of this study, it is believed that *D. melanogaster* and *D. sechellia* are derived from the hypothetical II species, but there are no data concerning the most recently evolved species. The analysis of the region 5' of the *Adh* gene between nucleotides 447 and 545, has revealed that *D. sechellia* is more closely related to *D. melanogaster* than to either *D. simulans* or *D. mauritiana* (Coyne & Kreitman, 1986). It is predicted that the hypothetical II species should possess salivary gland se-

cretory granules with two main features:

i) reduction in the amount of PA-TCH-SP positive granular material, compared to the species of the *yakuba* complex, and

ii) appearance of the filamentous PA-TCH-SP positive material, similar to that found in the species of the *melanogaster* complex.

The proposed direction of evolution is similar to that of Lee & Watanabe (1987), and particularly to that of Lachaise *et al.* (1988), with the exception of the hypothetical II species. It remains to be seen whether the new species belonging to the *melanogaster* subgroup of species should possess the above mentioned characteristics. It is noted that the newly discovered species of the *melanogaster* subgroup, *D. santomea* (Lachaise *et al.*, 2000), was not available when this study was performed.

Finally, because the studies published so far have provided information not always compatible with each other, it should be emphasized that the only reasonable approach in order to clarify phylogenetic relationships is to use all available information (molecular, morphological, biogeographical, etc.) and to weigh it according to its value in a particular case (Kwiatovsky *et al.*, 1994). There are several levels at which systematic studies may disagree (DeSalle & Grimaldi, 1991; Remsen & O'Grady, 2002), and therefore the utility of multiple markers in species-level phylogenetic studies is evident (Schwarbach, 2002; Machado & Hey, 2003).

REFERENCES

- Andersson S, Lambertsson A, 1991. Evolution of the DEC-1 eggshell locus in *Drosophila*. 1. Restriction site mapping and limited sequence comparison in the *melanogaster* species subgroup. *Journal of molecular evolution*, 33: 321-331.
- Arhontaki K, Eliopoulos E, Goulielmos G, Kastanis P, Tsakas S, Loukas M, Ayala F, 2002. Functional constraints of the Cu, Zn superoxide dismutase in species of the *Drosophila melanogaster* subgroup and phylogenetic analysis. *Journal of molecular evolution*, 55: 745-756.
- Ashburner M, Bodmer M, Lemeunier F, 1984. On the evolutionary relationships of *Drosophila melanogaster*. *Developmental genetics*, 4: 295-312.
- Ballard JW, 2000. Comparative genomics of mitochondrial DNA in members of the *Drosophila melanogaster* subgroup. *Journal of molecular evolution*, 51: 48-63.
- Caccone A, Amato GD, Powell JR, 1988. Rates and patterns of scnDNA and mtDNA divergence within the *Drosophila melanogaster* subgroup. *Genetics*, 118:

- 671-683.
- Caccone A, Gleason JM, Powell JR, 1992. Complementary DNA-DNA hybridization in *Drosophila*. *Journal of molecular evolution*, 34: 130-140.
- Caccone A, Moriyama EN, Gleason JM, Nigro L, Powell JR, 1996. A molecular phylogeny for the *Drosophila melanogaster* subgroup and the problem of polymorphism data. *Molecular biology and evolution*, 13: 1224-1232.
- Cariou ML, 1987. Biochemical phylogeny of the eight species in the *Drosophila melanogaster* subgroup, including *D. sechellia* and *D. orena*. *Genetical research*, 50: 181-185.
- Cobb M, Burnet B, Connolly K, 1986. The structure of courtship in the *Drosophila melanogaster* species subgroup. *Behaviour*, 97: 182-212.
- Coen E, Strachan T, Dover G, 1982. Dynamics of concerted evolution of ribosomal RNA and histone gene families in the *melanogaster* species subgroup of *Drosophila*. *Journal of molecular evolution*, 158: 17-35.
- Coulthart MB, Singh RS, 1988. Differing amount of genetic polymorphism in testes and male accessory glands of *Drosophila melanogaster* and *Drosophila simulans*. *Biochemical genetics*, 26: 153-164.
- Coyne JA, 1989. Genetics and sexual isolation between two sibling species, *Drosophila simulans* and *Drosophila mauritiana*. *Proceedings of the national academy of science (USA)*, 86: 5464-5468.
- Coyne JA, Charlesworth B, 1997. Genetics of a pheromonal difference affecting sexual isolation between *Drosophila mauritiana* and *D. sechellia*. *Genetics*, 145: 1015-1030.
- Coyne JA, Kreitman M, 1986. Evolutionary genetics of two sibling species, *Drosophila simulans* and *D. sechellia*. *Evolution*, 40: 673-671.
- Dainou O, Cariou ML, David JR, Hickey D, 1987. Amylase gene duplication: an ancestral trait in the *Drosophila melanogaster* species subgroup. *Heredity*, 59: 245-251.
- DeSalle R, 1992. The phylogenetic relationships of flies in the family Drosophilidae deduced from mtDNA sequences. *Molecular phylogenetics and evolution*, 1: 31-40.
- DeSalle R, Grimaldi DA, 1991. Morphological and molecular systematics of the Drosophilidae. *Annual Reviews of ecology and systematics*, 22: 447-475.
- Dowsett AP, 1983. Closely related species of *Drosophila* can contain different libraries of middle repetitive DNA sequences. *Chromosoma*, 88: 104-108.
- Eisses KT, van Dijk H, van Delden W, 1979. Genetic differentiation within the *melanogaster* species group of the genus *Drosophila* (Sophophora). *Evolution*, 33: 1063-1068.
- Grimaldi D, 1990. A phylogenetic revised classification of genera in the Drosophilidae. *Bulletin of american museum of natural history*, 197: 1-139.
- Hale LR, Singh RS, 1991. Contrasting patterns of genetic structure and evolutionary history as revealed by mitochondrial DNA and nuclear gene-enzyme variation between *Drosophila melanogaster* and *Drosophila simulans*. *Journal of genetics*, 70: 79-90.
- Harr B, Weiss S, David JR, Brem G, Schlotterer C, 1998. A microsatellite-based multilocus phylogeny of the *Drosophila melanogaster* species complex. *Current biology*, 8: 1183-1186.
- Hartl DL, Nurminsky DI, Jones RW, Lozovskaya ER, 1994. Genome structure and evolution in *Drosophila*: Applications of the framework P1 map. *Proceedings of the national academy of sciences (USA)*, 91: 6824-6829.
- Hey J, Kliman RM, 1993. Population genetics and phylogenetics of DNA sequence variation at multiple loci within the *Drosophila melanogaster* species complex. *Molecular biology and evolution*, 10: 804-822.
- Hilton H, Kliman RM, Hey J, 1995. Using hitchhiking genes to study adaptation and divergence during speciation within the *Drosophila melanogaster* species complex. *Evolution*, 48: 1900-1913.
- Jallon J-M, David JR, 1987. Variations in the cuticular hydrocarbons among the eight species of the *Drosophila melanogaster* subgroup. *Evolution*, 41: 294-302.
- Jeffs PS, Holmes EC, Ashburner M, 1994. The molecular evolution of the alcohol dehydrogenase and alcohol dehydrogenase-related genes in the *Drosophila melanogaster* species subgroup. *Molecular biology and evolution*, 11: 287-304.
- Joly D, 1987. Between-species divergence of cyst length distributions in the *Drosophila melanogaster* species complex. *Japan journal of genetics*, 62: 257-263.
- Kalantzi-Makri MC, Margaritis LH, Sourdis J, 1985. Phylogenetic relationships within the *montium* species subgroup of the genus *Drosophila* (*Sophophora*) based on electrophoretic data of the major chorion proteins. *Annals de societe entomologie de France (N.S.)*, 21: 357-366.
- Karnovsky MJ, 1965. A formaldehyde-glutaraldehyde fixative of high osmolality for use in electron microscopy. *Journal of cell biology*, 27: 137a.
- Kastanis P, Eliopoulos E, Goulielmos GN, Tsakas S, Loukas M, 2003. Macroevolutionary relationships of species of *Drosophila melanogaster* group based on mtDNA sequences. *Molecular phylogenetics and evolution*, 28: 518-528.
- Kliman RM, & Hey J, 1993. DNA sequence variation at the period locus within and among species of the *Drosophila melanogaster* complex. *Genetics*, 133: 375-387.
- Kliman RM, Andolfatto P, Coyne JA, Depaulis F, Kreitman M, Berry AJ, McCarter J, Wakeley J, Hey J,

2000. The population genetics of the origin and divergence of the *Drosophila simulans* complex species. *Genetics*, 156: 1913-1931.
- Kwiatowski J, Skarecky D, Bailey K, Ayala FJ, 1994. Phylogeny of *Drosophila* and related genera inferred from the nucleotide sequence of the Cu,Zn Sod gene. *Journal of molecular evolution*, 38: 443-454.
- Lachaise D, Cariou ML, David JR, Lemeunier F, Tsacas L, Ashburner M, 1988. Historical biogeography of the *Drosophila melanogaster* subgroup. *Evolutionary biology*, 22: 159-225.
- Lachaise D, David JR, Lemeunier F, Tsacas L, Ashburner M, 1986. The reproductive relationships of *Drosophila sechellia* with *D. mauritiana*, *D. simulans* and *D. melanogaster* from the Afrotropical region. *Evolution*, 40: 262-271.
- Lachaise D, Harry M, Solignac M, Lemeunier F, Benassi V, Cariou M-L, 2000. Evolutionary novelties in islands: *Drosophila santomea*, a new *melanogaster* sister species from Sao Tome. *Proceedings of the royal society of london B*, 267: 1487-1495.
- Lamnisou K, Zouros E, 1989. Interspecific ovarian transplantations in *Drosophila*. Vitellogenin uptake as an index of evolutionary relatedness. *Heredity*, 63: 29-35.
- Lee WH, Watanabe TK, 1987. Evolutionary genetics of the *Drosophila melanogaster* subgroup. I. Phylogenetic relationships based on matings, hybrids and proteins. *Japan journal of genetics*, 62: 225-239.
- Lemeunier F, Ashburner M, 1976. Relationships within the *melanogaster* species subgroup of the genus *Drosophila* (*Sophophora*). II. Phylogenetic relationships between six species based upon polytene chromosome banding sequences. *Proceedings of the royal society of London B*, 193: 275-294.
- Lemeunier F, Ashburner M, 1984. Relationships within the *melanogaster* species subgroup of the genus *Drosophila* (*Sophophora*). IV. The chromosome of two new species. *Chromosoma*, 89: 343-351.
- Lemeunier F, David JR, Tsacas L, Ashburner M, 1986. The *melanogaster* species group. In Ashburner M, Carson HL, Thompson, Jr. JN, eds. *The Genetics and Biology of Drosophila*, Academic Press, N.Y.: Vol. 3a: 147-256.
- Lohe AR, Roberts PA, 2000. Evolution of DNA in heterochromatin: the *Drosophila melanogaster* sibling species subgroup as a resource. *Genetica*, 109: 125-130.
- Machado CA, Hey J, 2003. The causes of phylogenetic conflict in a classic *Drosophila* species group. *Proceedings of the royal society of London B*, 270: 1193-1202.
- Matsuo Y, Inomata N, Yamazaki T, 1999. Evolution of the amylase isozymes in the *Drosophila melanogaster* species subgroup. *Biochemical genetics*, 37: 289-300.
- Molto MD, Martinez-Sebastian MJ, DeFrutos R, 1994. Phylogenetic relationships between *Drosophila subobscura*, *D. guanche* and *D. madeirensis* based on Southern analysis of heat shock genes. *Hereditas*, 120: 217-223.
- Nigro L, Solignac M, Sharp PM, 1991. Mitochondrial-DNA sequence divergence in the *melanogaster* and oriental species subgroups of *Drosophila*. *Journal of molecular evolution*, 33: 156-162.
- O'Grady PM, Baker RH, Durando CM, Etges WJ, DeSalle R, 2001. Polytene chromosomes as indicators of phylogeny in several species groups of *Drosophila*. *BMC Evolutionary Biology*, 1:6, Epub 2001 Oct. 10.
- Palopoli MF, Davis AW, Wu CI, 1996. Discord between the phylogenies inferred from molecular versus functional data: uneven rates of functional evolution or low levels of gene flow? *Genetics*, 144: 1321-1328.
- Peixoto AA, Costa R, Wheeler DA, Hall JC, Kyriacou CP, 1992. Evolution of the Threonine-Glycine repeat region of the period gene in the *melanogaster* species subgroup of *Drosophila*. *Journal of molecular evolution*, 35: 411-419.
- Pelandakis M, Solignac M, 1993. Molecular phylogeny of *Drosophila* based on ribosomal RNA sequences. *Journal of molecular evolution*, 37: 525-543.
- Pissios P, Scouras ZG, 1993. Mitochondrial DNA evolution in the *montium* species subgroup of *Drosophila*. *Molecular biology and evolution*, 10: 375-382.
- Remsen J, O'Grady P, 2002. Phylogeny of Drosophilinae (Diptera: Drosophilidae) with comments on combined analysis and character support. *Molecular phylogenetics and evolution*, 24: 249-264.
- Reynolds ES, 1963. The use of lead citrate at high pH as an electron opaque stain in electron microscopy. *Journal of cell biology*, 17: 208-218.
- Rizki TM, Rizki RM, 1980. The direction of evolution in the *Drosophila melanogaster* species subgroup based on functional analysis of the crystal cells. *Journal of experimental zoology*, 21: 323-328.
- Ross JL, Fong PP, Cavener DR, 1994. Correlated evolution of the cis-acting regulatory elements and developmental expression of the *Drosophila* Gld gene in seven species from the subgroup *melanogaster*. *Developmental genetics*, 15: 38-50.
- Russo CA, Takezaki N, Nei M, 1995. Molecular phylogeny and divergence times of drosophilid species. *Molecular biology and evolution*, 12: 391-404.
- Satta Y, Takahata M, 1990. Evolution of *Drosophila* mitochondrial-DNA and the history of the *melanogaster* subgroup. *Proceedings of the national academy of sciences (USA)*, 87: 9558-9562.
- Schawaroch V, 2002. Phylogeny of a paradigm lineage: the *Drosophila melanogaster* species group (Diptera: Drosophilidae). *Biological journal of the Linnean society*, 76: 21-37.

- Shibata H, Yamazaki T, 1995. Molecular evolution of the duplicated Amy locus in the *Drosophila melanogaster* species subgroup: concerted evolution only in the coding region and an excess of nonsynonymous substitutions in speciation. *Genetics*, 141: 223-236.
- Singh RS, 1989. Population genetics and evolution of species related to *Drosophila melanogaster*. *Annual reviews of genetics*, 23: 425-453.
- Solignac M, Monnerot M, 1986. Race formation, speciation, and introgression within *Drosophila simulans*, *D. mauritiana* and *D. sechellia* inferred from mitochondrial DNA analysis. *Evolution*, 40: 531-539.
- Solignac M, Monnerot M, Mounolou J-C, 1986. Mitochondrial DNA evolution in the *melanogaster* species subgroup of *Drosophila*. *Journal of molecular evolution*, 23: 31-40.
- Spicer GS, 1988. Molecular evolution among some *Drosophila* species groups as indicated by two-dimensional electrophoresis. *Journal of molecular evolution*, 27: 250-260.
- Spurr AR, 1969. A low viscosity epoxy resin embedding medium for electron microscopy. *Journal of ultrastructure research*, 26: 31-43.
- Strachan T, Coen E, Webb DA, Dover G, 1981. Modes and rates of change of complex DNA families of *Drosophila*. *Journal of molecular evolution*, 15:37-54.
- Tartof KD, 1979. Evolution of transcribed and spacer sequences in the ribosomal RNA genes of *Drosophila*. *Cell*, 17: 607-614.
- Thackeray JR, Kyriacou CP, 1990. Molecular evolution in the *Drosophila yakuba* period locus. *Journal of molecular evolution*, 31: 389-401.
- Thiery JP, 1967. Mise en évidence des polysaccharides sur coupes fines en microscopie électronique. *Journal de microscopie (Paris)*, 6: 987-1018.
- Thomas RH, Hunt JA, 1993. Phylogenetic relationships in *Drosophila*: a conflict between molecular and morphological data. *Molecular biology and evolution*, 10: 362-374.
- Thomopoulos GN, 1987. An ultrastructural and histochemical study of the secretory granules in the salivary gland cells of the *Drosophila melanogaster* species subgroup: phylogenetic relationships and evolutionary aspects. *Canadian journal of zoology*, 65: 950-957.
- Thomopoulos GN, Kastritsis CD, 1979. A comparative ultrastructural study of "glue" production and secretion of the salivary gland cells in different species of the *Drosophila melanogaster* group. *Wilhelm Roux's archives of developmental biology*, 187: 329-354.
- Thomopoulos GN, Neophytou EP, Kastritsis CD, 1989. An ultrastructural and histochemical developmental study of *Drosophila auraria* salivary gland cells during the third-instar period. *Canadian journal of zoology*, 67: 421-429.
- Thomopoulos GN, Neophytou EP, Alexiou M, Vadolas A, Limberi-Thomopoulos S, Derventzi A, 1992. Structural and histochemical studies of Golgi complex differentiation in salivary gland cells during *Drosophila* development. *Journal of cell sciences*, 102: 169-184.
- Throckmorton LH, 1975. The phylogeny, ecology and geography of *Drosophila*. In King RC, ed. *Handbook of Genetics*. Plenum Press, N.Y.: 421-469.
- Ting CT, Tsaur SC, Wu CI, 2000. The phylogeny of closely related species as revealed by the genealogy of a speciation gene, *Odysseus*. *Proceedings of the national academy of sciences (USA)*, 97: 5313-5316.
- Tsacas SC, Tsacas L, 1984. A phenetic tree of eighteen species of the *melanogaster* group: allozyme data as compared with classifications based on other criteria. *Genetica*, 64: 139-144.
- Tsujino F, Kosemura A, Inohira K, Hara T, Otsuka YF, Obara MK, Matsuura ET, 2002. Evolution of the A+T-rich region of mitochondrial DNA in the *melanogaster* species subgroup of *Drosophila*. *Journal of molecular evolution*, 55: 573-583.