



INSTRUCTION MANUAL

Filter System Bioflow M, L, XL



www.juwel-aquarium.com

Introduction

Thank you for choosing a JUWEL Aquarium product.

Our products represent over 50 years experience in the manufacturing of aquariums and their accessories applying most modern production techniques bringing together the JUWEL Aquarium system, which is both easy to use and simple to maintain.

Please read this instruction manual carefully and completely to make sure you have received all components before setting up the aquarium. Please observe the safety instructions and maintenance guidelines given in this manual.

This instruction manual has been carefully prepared to provide you with accurate and complete information. All efforts have been made to ensure that the information given is correct. However, we cannot accept responsibility for printing or other errors. Technical details are always approximate and are not warranted characteristics and may be subject to change without notice.



SAFETY INSTRUCTIONS:

This appliance can be used by children aged from 8 years and above and persons with reduced physical, sensory or mental capabilities or lack of experience and knowledge if they have been given supervision or instruction concerning use of the appliance in a safe way and understand the hazards involved. Children shall not play with the appliance. Cleaning and user maintenance shall not be made by children without supervision.

The power plugs of the electrical devices must not become moist. Connect the power plugs to the power supply at such a height that the connection cable forms a loop which would enable the water to drip down.

At all times, only operate the electrical devices for your aquarium (lighting, heater, pump etc.) using an earth leakage circuit breaker (EL circuit breaker) with a maximum tripping current of 30 mA. If the socket that you are using in your home installation is not safeguarded with such a circuit breaker, please use a commercially available power strip with an integrated earth leakage circuit breaker.

The electrical devices may only be operated in rooms.

Pull the power plug of all devices operated in water before coming into contact with the water.



The JUWEL filter system Bioflow

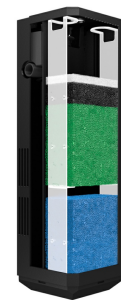
The JUWEL filter system Bioflow is a highly effective biological filter system with two stages that includes components complementing each other in an ideal manner.

Installing the filter in the aquarium makes hose connections unnecessary and prevents leaks. The pump output is not negatively affected by hose couplings, intake tubes etc.

The capacity of the pump is designed in such a manner that an ideal level of biological filtering is ensured by a sufficient level of percolation through the filter material.

In that context, the large filter volume ensures excellent mechanical filtering and facilitates long cleaning intervals.

The construction of the filter system enables you to quickly access the individual heater, pump, and filter media components. This way, the filter system may comfortably be operated during cleaning and while performing maintenance work.



Bioflow Super



Bioflow M, L, XL

All Bioflow filter systems are delivered with five top-quality filter media:

1. bioPad – filter wadding (white)

The fleece wadding acts as a mechanical pre-filter. It stops coarse dirt, such as dead plant parts, from penetrating deeper into the filter.

3. bioCarb – activated carbon sponge (black)

The sponge containing bound activated carbon removes toxins from the water, e.g. harmful heavy metals and organic impurities.

5. Nitrox – nitrate remover (green)

The sponge contains micro-organisms that are able to break down nitrates. The JUWEL filter offers a particularly good environment to this end.

6. bioPlus coarse – coarse filter sponge (blue)

The coarse-pored filter sponge in the middle of the filter causes the biological clarification of the water through the accumulation of bacterial cultures.

8. bioPlus fine – fine filter sponge (blue)

The fine-pored filter sponges in the lower section of the filter retain even the smallest suspended particles and ensure crystal-clear water.

Other optional filter media round off the options that are available for the optimum use of your JUWEL inside filter:

2. Between 1. & 2. bioBoost – filter accelerator

JUWEL bioBoost immediately activates new filter media and accelerates the filtration performance in your aquarium. It promotes the vitality of fish and plants.

7. Amorax – ammonium remover

Amorax is a highly efficient filter medium made of natural zeolite. It quickly and effectively binds ammonium, thereby preventing the formation of ammonia and promotes the vitality of your fish.

4. Carbox – highly effective activated carbon

Carbox's excellent absorption properties permanently and quickly bind discolourations, odours and toxic substances and ensure crystal-clear water.

7. Cirax – ceramic granules

Cirax is a biological filter medium which creates the perfect colonisation conditions for useful bacteria, due to its large, highly porous surface.

7. Phorax – phosphate remover

JUWEL Phorax is a highly effective filter medium used to break down phosphates in your aquarium. This effectively reduces the growth of algae and can contribute to improved plant growth.



Installation of the JUWEL Filter System in your Aquarium

The JUWEL Filter has been designed for installation in the right hand corner of the aquarium.

First of all, please remove all internal components of the Filter System leaving you with the empty filter housing.

In order to ensure that the Filter System is securely fastened to the glass panels, we have included a tube of special JUWEL Aquarium silicon. Apply the silicone onto the housing as shown in the picture, on both the side and the rear walls.

Your Aquarium should be empty or as near as empty, allowing you to wipe the glass dry.

Position the filter housing in the aquarium in such a way that the top of the filter housing rises 1 cm above the maximum water level of your aquarium.

Press the housing onto the glass panels firmly, and hold it for a few minutes. Allow the silicone to dry out for at least 24 hours.



Getting Started - The JUWEL filter system Bioflow M, L, XL

You should prepare the filter for operation prior to setting up the aquarium. However, do not connect the electrical components to the power supply yet.

Please observe the following notes regarding commissioning the JUWEL filter system Bioflow:

The JUWEL filter system consists of:

- 1 heater (included in complete aquariums only)
- 1 heater holder
- 1 pump
- 1 outlet nozzle
- 2 filter basket
- 3 sets of white filter wool - bioPad, packaged
- 1 carbon sponge - bioCarb, packaged
- 1 green nitrate remover sponge - Nitrax, packaged
- 1 blue filter sponge - bioPlus coarse
- 2 blue filter sponges - bioPlus fine

1. Insert the base of the pump into the pump holder of the filter and firmly push it into position. In that context, the pump outlet faces in the direction of the outlet opening. Confirm the proper arrangement of the gasket in the outlet opening (it is used to minimize the transmission of vibrations).

2. Carefully attach the outlet nozzle from the outside through the opening to the pump outlet and ensure its firm connection.

3. Insert the heater holder into the guide rail of the filter separation wall.

4. Insert the heater from above into the heater holder.

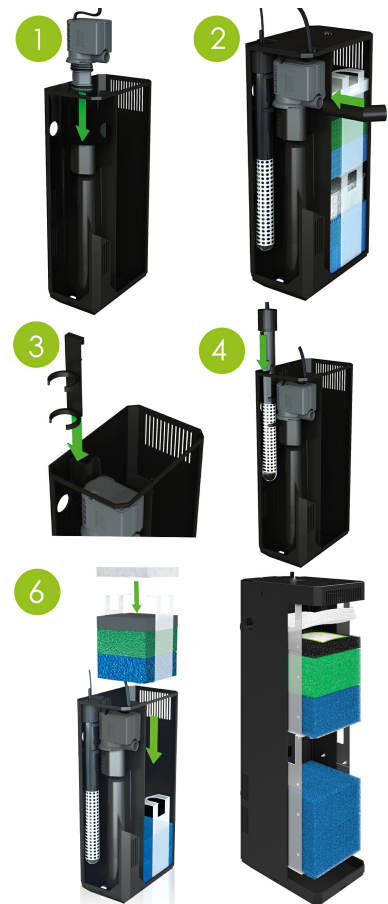
5. Now start preparing the filter sponges by removing the plastic packaging from the carbon sponge and the nitrate remover sponge. Thoroughly rinse the blue filter sponges only under running water.

6. After this, insert the blue "fine" filter sponges into the lower filter basket.

Following that, place the blue "rough" filter sponge, the green nitrate remover sponge, the carbon sponge, and filter wool in the top position into the upper filter basket and push both filter baskets into the filter housing.

7. Place the filter cover on the filter housing.

8. The JUWEL filter system Bioflow is now ready for operation.



The JUWEL Aquarium Filter System is a biological filter system. For it to work effectively, bacteria cultures will need to grow inside the blue sponges. This process can take up 6-8 weeks for the filter to fully mature. Consequently we recommend to decorate and plant the aquarium and add just a few (3-5) hardy fish in order to help the maturation process. Please test the water on a weekly basis to monitor the water conditions and once the water is safe you can begin to add more fish.

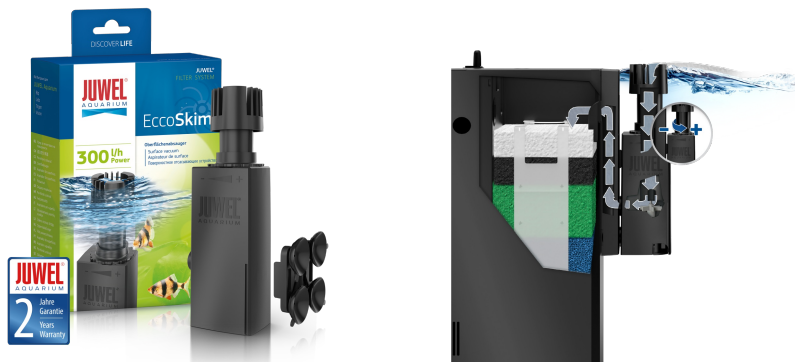
TIPP Notice:

The use of JUWEL bioBoost at the beginning and at every (partial) water change will shorten the running-in phase of your JUWEL Aquarium inside filter.



Notice:

JUWEL EccoSkim combines the benefits of a surface skimmer with a compact design and great adjustable surface-skimming capacities. With a performance of 300 l/h at a consumption of only 4.5 W, the JUWEL EccoSkim guarantees effective surface skimming for freshwater and salt-water aquariums. Film and other surface-active substances are effectively removed and conveyed to the JUWEL filter system and stored there. This can be ordered from your JUWEL Aquarium retailer (Part No. 87025).



i Recommendation

OxyPlus - O2 Air Diffuser

The special OxyPlus - O2 Air Diffuser provides additional oxygen to the aquarium if desired. This can be ordered from your JUWEL Aquarium retailer (Part No. 85145).



Care and maintenance of the JUWEL Filter System

The JUWEL Filter System requires very little maintenance if you follow the following instructions.

bioPad

Replace the white filter wool pad once a week. If you have large fish, then this may require changing slightly more frequently. This will ensure that the filter sponges will not be clogged by larger dirt particles.

bioCarb

Replace the black activated carbon sponge every 4-6 weeks. Again, if you have large fish then this may be to be more frequent. This ensures that any chemical impurities from the water will be removed. Please note that the chemicals which are absorbed by the activated carbon contained in the sponge, will be released to the water again if the change intervals are too long.

bioPlus coarse/bioPlus fine

If the filter wool and the activated carbon sponge are replaced as suggested, then it is sufficient to carefully clean or replace the coarse blue sponges at 6-12 weeks and the fine blue sponges at 3-9 months only.

- Cleaning or replacing the blue sponges or the Cirax filter medium affects the impact of the bacterial culture. For that reason, it is recommended not to clean or replace the blue sponges and the Cirax filter medium at the same time, but rather successively in an alternating manner.

You do not need to worry about the liquid dirt accumulating at the bottom of the filter housing. Normally, this dirt contains important biological substances which enhance the water quality.

Please do not worry if some dirt gets into the water during the cleaning process causing cloudiness. After the filter system is back in operation, the water will soon clear again.

Nitrax

In order to allow a proper level of micro-organisms in the filtration system it is recommended to exchange the sponge every 8 weeks. The nitrate removal sponge contains bacteria, which will after a while reduce the nitrate level in the aquarium significantly.

OPTIONAL:

BioBoost

JUWEL bioBoost immediately activates new filter media and accelerates the filtration performance in your aquarium. It promotes the vitality of fish and plants. After 4 weeks, the bag with the nutrient residues can be removed or replaced, if required.

Amorax

Amorax is a highly efficient filter medium made of natural zeolite. It quickly and effectively binds ammonium, thereby preventing the formation of ammonia and promotes the vitality of your fish. Replace the JUWEL Amorax every 3 months.

Carbox

Carbox's excellent absorption properties permanently and quickly bind discolourations, odours and toxic substances and ensure crystal-clear water. We recommend replacing JUWEL Carbox every 2 months.

Cirax

Cirax is a biological filter medium which creates the perfect colonisation conditions for useful bacteria, due to its large, highly porous surface. We recommend changing JUWEL Cirax every 12 months.

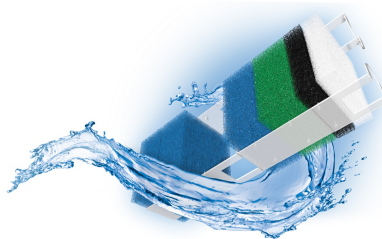
Phorax

JUWEL Phorax is a highly effective filter medium used to break down phosphates in your aquarium. This effectively reduces the growth of algae and can contribute to improved plant growth. Change JUWEL Phorax every 2 weeks.



i Important:

Always use original JUWEL Aquarium filter media to ensure the optimum performance of your system.



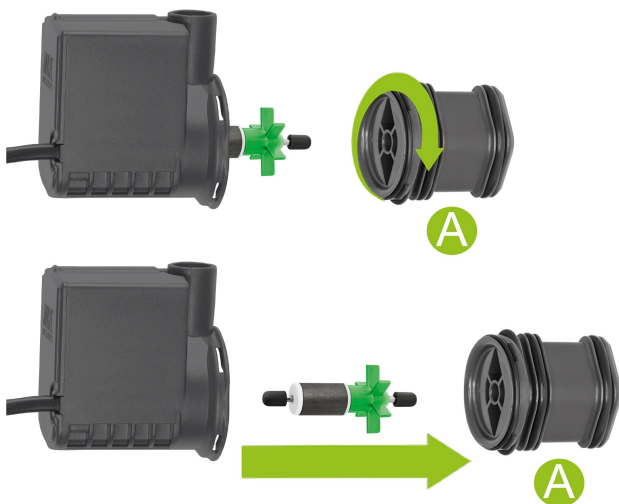
Maintenance of the pump JUWEL Eccoflow in the filter system Bioflow Super M, L, XL

The JUWEL Eccoflow pump should be checked with regard to functionality and cleaned at regular intervals (at least once a month).

Please proceed as follows to this end:

1. Disconnect all electrical devices that are operated in the water from the power grid.
2. Remove the outlets.
3. Remove the pump from the pump retainer of the filter.
4. Disconnect the adapter (A) from the motor by turning it counter-clockwise and remove the impeller from the chamber.
5. Now clean all components thoroughly. Deposits and dirt should in particular be removed from the pump chamber, the impeller and pump shaft. Otherwise the functionality of the pump will be impaired.
6. Check the impeller for damage and possible signs of wear of the magnet. You should also ensure that the two rubber bearings are located on the ends of the pump shaft.

After that, please reinstall the pump in reverse order in the filter.



i Recommendation:

We recommend that you replace the parts subjected to wear and tear, e.g. the impeller, axle and the rubber axle holders, at intervals of approx. 12 months in order to ensure the optimum function and operating quietness of the pump. Inquire at your specialist retailer for assistance.



SAFETY INSTRUCTIONS:

Never operate the power head out of water.

Always unplug the power head from the power supply before removing it from the filter.

The power head is intended for indoor use and for use in fluids up to 35°C.

Never repair the electrical cord or plug. In case of damage replace the complete power head.



Proper disposal (electrical waste)

The labelling on the product or on the accompanying literature declares that it must not be disposed of, at the end of its service life, together with household rubbish. Please dispose of this equipment separately from other waste, to protect the environment or public health from damage by unregulated waste disposal.

Recycle the equipment and support the sustained recycling of material resources.

Private users should contact the dealer who sold them the product or the responsible authorities, for a demonstration on how to recycle the equipment in an environmentally friendly way.

Guarantee

We guarantee the performance of the JUWEL-Aquarium product or its accessories to the purchaser for a period of 24 months from the date of purchase according to the following conditions:

§ 1 Extent of the guarantee

(1) This guarantee extends to the JUWEL-Aquarium product and its components excluding items subject to wear and tear such as T5 and T8 light tubes and filter media. It is limited to the product as such and does not cover damage to other property and/or individuals. In addition, the provisions of the product liability law apply. These provisions are not limited by the aforementioned arrangement.

(2) It is the prerogative of JUWEL-Aquarium to decide whether the guarantee is performed by means of repair or replacement. If neither repair nor replacement can ensure the performance of the JUWEL-Aquarium product the purchaser is entitled to demand a reduction in price or to return the product against repayment of the purchase price.

§ 2 Guarantee period and settlement procedure

(1) The guarantee period begins on the day of the purchase of the JUWEL Aquarium product from the retailer. Claims under this guarantee will not be honoured, if

- (a) the damage is caused as a result of improper use or maintenance or nonobservance of the instructions given in this manual
- (b) the product or its components have been maintained by persons or companies not authorised by the manufacturer to do so
- (c) the product or its components have been damaged by mechanical means of whatsoever kind, in particular broken glass

(2) All claims under this guarantee have to be notified to the retailer, from whom the aquarium has been purchased without delay, however, not longer than 2 weeks from the day of first occurrence of defects. Rights under the consumer protection laws will remain unaffected.

(3) Guarantee claims will only be accepted if the validity of the claim is supported by evidence of purchase of the JUWEL-Aquarium product. This declaration of guarantee is a translation only. In case of doubts the original

German language version prevails.

We reserve the right to make technical alterations.

© JUWEL AQUARIUM

® JUWEL, Trigon, Vision, Rekord, Rio, Lido, Vio, Primo, Korall, MonoLux, DuoLux, MultiLux, KorallLux, Violux, NovoLux, PrimoLux, SeaSkim, EccoSkim AquaHeat, EasyFeed, SmartFeed, High-Lite, Warm-Lite, Colour-Lite, Day-Lite, Juwel Twin-Lite, HiFlex, SmartControl, Juwel Eccoflow, Bioflow, Cirax, Nitrox, Phorax, Carbox, BioPad, BioCarb, BioPlus, bioBoost, OxyPlus, Silexo, Conexo.

JUWEL AQUARIUM AG & CO. KG

Karl-Göx-Straße 1 27356 Rotenburg/Wümme . GERMANY

Telefon +49(0)42 61/93 79-32

Telefax +49(0)42 61/93 79-856

Service-Mail service@juwel-aquarium.de

JUWEL AQUARIUM UK Branch

Gateway 11 Business Park

Penfold Drive, Wymondham Norfolk NR18 0WZ

Tel.: 01953 606 363 Fax: 01953 603 839

E-Mail: info@juwel-aquarium.co.uk

Service-Mail: info@juwel-aquarium.co.uk

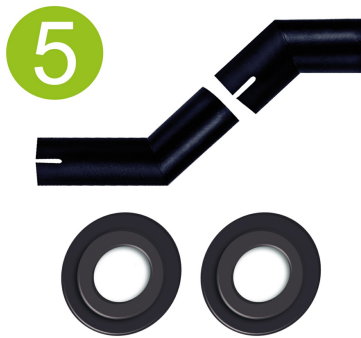


FILTERPASS

Filter System Bioflow M, L, XL



www.juwel-aquarium.com



Aquarium	Rio 125 / Lido 120	RIO 180, 240/ Lido 200/ Vision 180/ Trigon 190	Rio 350/ Vision 260	Rio 450/ Vision 450/ Trigon 350
Filter Type	Bioflow M	Bioflow M	Bioflow L	Bioflow XL
	Product Code	Product Code	Product Code	Product Code
1.	Eccoflow 500	Eccoflow 600	Eccoflow 1000	Eccoflow 1000
	INT:85752	INT:85754	INT:85756	INT:85756
	UK:85762	UK:85764	UK:85766	UK:85766
	AU:85772	AU:85774	AU:85776	AU:85776
2.	85091	85093	85095	85095
3.	AquaHeat 100 W	AquaHeat 200W	AquaHeat 300 W	AquaHeat 300 W
	INT:85605	INT:85610	INT:85615	INT:85615
	UK:85805	UK:85810	UK:85815	UK:85815
	AU:85855	AU:85860	AU:85865	AU:85865
4.	85990	85990	85990	85990
5.	90046	90046	90046	90046
6.	90017	90017	90018	90019

FILTERMEDIA Filter System Bioflow M, L, XL



Bioflow ONE

Bioflow Super

Bioflow M, L, XL



Aquarium		Primo 60 & 70	Primo 110	Rio 125, 180, 240 / Lido 120, 200/ Vision 180/ Trigon 190	Rio 350/ Vision 260	Rio 450/ Vision 450/ Trigon 350
Filter Type		Bioflow ONE	Bioflow Super	Bioflow M	Bioflow L	Bioflow XL
		Product Code	Product Code	Product Code	Product Code	Product Code
7.	BioPad	---	88038	88049	88099	88149
9.	BioCarb	---	88037	88059	88109	88159
11.	Nitrax	---	88055	88055	88105	88155
12.	BioPlus coarse	---	---	88050	88100	88150
14.	BioPlus fine	88021	88051	88051	88101	88151
8. OPTIONAL	BioBoost	---	88000	88000	88000	88000
10. OPTIONAL	Carbox	---	88054	88054	88104	88154
13. OPTIONAL	Amorax	---	88058	88058	88108	88158
	Cirax	---	88056	88056	88106	88156
	Phorax	---	88057	88057	88107	88157