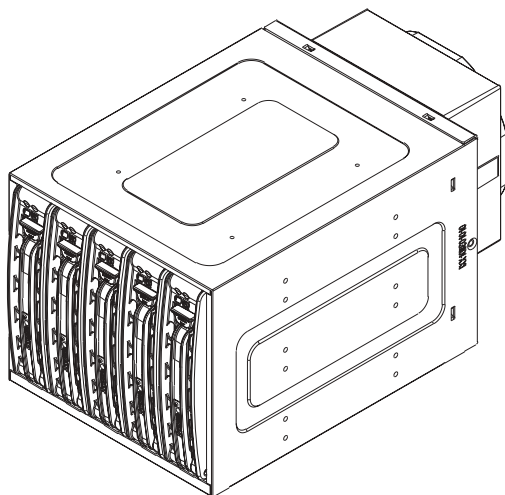


SUPERO[®]



CSE-M35S/CSE-M35T1

Mobile Rack

USER'S GUIDE

Table of Contents

1. Packaging List	3
2. Technical Specifications	4
3. Jumper Settings	5
4. Installation Procedures	7

CSE-M35S/CSE-M35T1

Supermicro's CSE-M35S/CSE-M35T1 Mobile Rack Series offers the cutting edge technology with greater flexibility. The CSE-M35T1 supports five Serial ATA hot-swappable hard drives that yield a unparalleled storage capacity without compromising productivity by eliminating possible system downtime. The CSE-M35S also accommodates five SCSI SCA 320/160 Hard drives which provide configuration flexibility and maximum data integrity.

1. Packing List

Please check to see if you have received all the items listed below:

*CSE-M35S/CSE-M35T1 Mobile Rack

*90mm-Exhaust Fan (Fan-0057)

*Screws: Thirteen (13) counts of Flat Head Screws

Twenty-four (24) counts of Round Head Screws

Seven (7) counts of Round Head Screws with Lock-Washer

*Drive Carrier Five (5)CSE-PT17/CSE-PT17(B)(-black)

(*For CSE-M35T1 only)

*Serial ATA Backplane (CSE-SATAM35)

*Five (5) Serial ATA Cables (CBL-0044)

*Serial ATA LED cable (CBL-0057)

(*For CSE-M35S only)

*SCSI Backplane (CSE-SCAM942)

*SCSI cable (CBL-027-U320)

2. Technical Specifications

Occupancy	Three (3) 5.25" Drive Bays
Capacity	Five (5) 1" SCA Ultra320/160 Hard Drives with SAF-TE built-in (*CSE-M35S only) Five (5) 1" Host Receptacle Connectors, SATA hot-swap hard drives (*CSE-M35T-1 only)
Cooling Subsystem	One (1) 90mm (9cm) Exhaust Fan
System Monitoring	*Fan Fail Detection LED and Alarm *Overheat LED indication *Drive Fail Alarm and Indication (*CSE-M35S only) *Built-in Termination (*CSE-M35S only)
Dimension (WxHxD)	146mm x 129mm x 245mm (5.7 in x 5.0 in x 9.6 in)
Weight	Net: 5.9lb (2.9 kg), Gross: 7.5lb (3.7 kg)

Chassis supported:

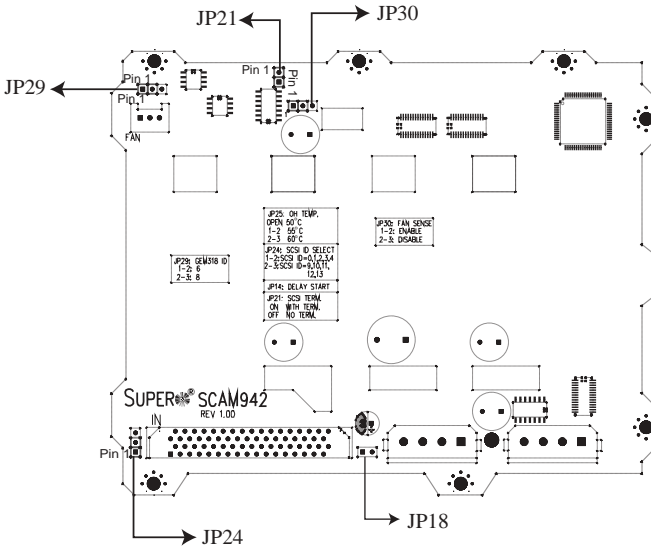
SC762, SC830, SC942

3. Jumper Settings

A. Jumper Settings for the CSE-M35S (SCSI):

Jumper	Description	Setting
JP18	Buzzer Reset	Closed: Enable, Open: Disable (*Default)
JP21	SCSI Termination	Closed: Enable (*Default), Open: Disable
JP24	SCSI ID Selection	1-2: SCSI Ids: 0,1,2,3,4 (*Default), 2-3: SCSI Ids: 9,10,11,12,13
JP29	GEM 318 IDs	1-2: ID6 (*Default), 2-3: ID8
JP30	Fan Sense	Pins 1-2: Enable (*Default) (If a fan is not present, the alarm will sound.), Pins 2-3: Disable

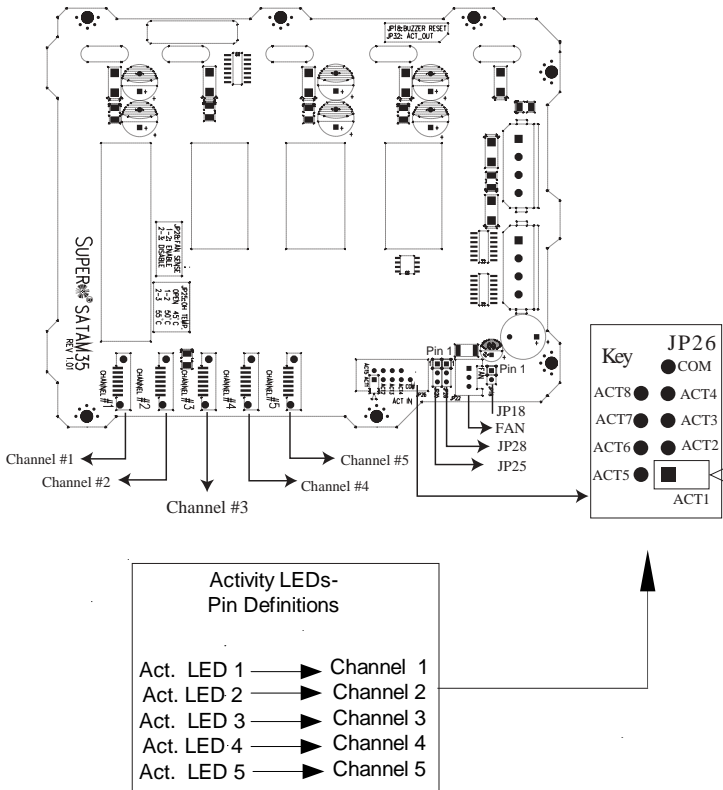
Location of Jumpers



B. Jumper Settings for the CSE-M35T1 (SATA):

Jumper	Description	Setting
JP18	Buzzer Reset	Closed: Enable, Open: Disable (*Default)
JP25	Overheat Temperature	Open: 45°C 1-2: 50°C (*Default), 2-3: 55°C
JP26	Act#1-Act#5	Connect this header to CBL-0057 (SATA LED Cable)
JP28:	Fan Sense	1-2: Enabled (if a fan is not present, the alarm will sound) (*Default) 2-3: Disabled

Location of Jumpers



4. Installation Procedures

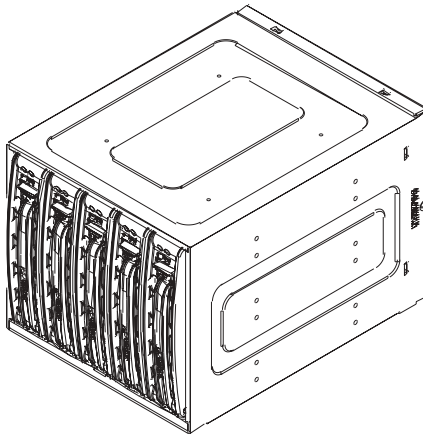
(*Note:

For the CSE-M35S:

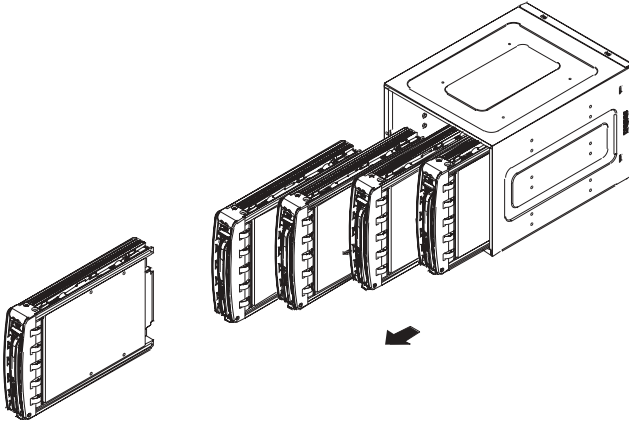
1. SCSI IDs are assigned automatically by the backplane. **Do not set IDs manually on the drives.** See the previous section for SCSI ID jumper settings.
2. SCSI termination is enabled by default on the SCSI backplane.)

A. Accessing Hot Swappable Drives:

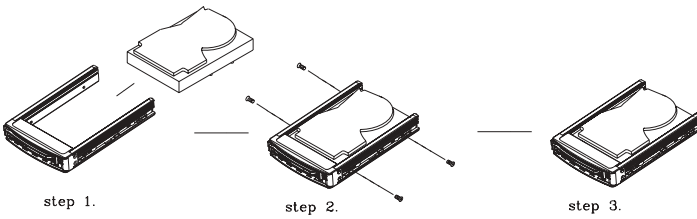
1. Push the release button located beside the drive LEDs (as shown below:)



2. Swing the handle outward and pull out the unit (as shown below:)

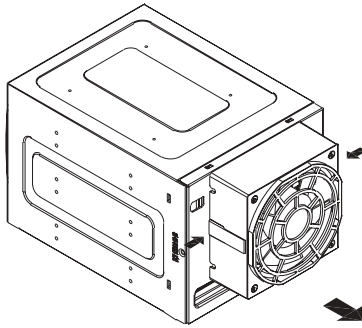


3. Mount a drive in a carrier (as shown below:)

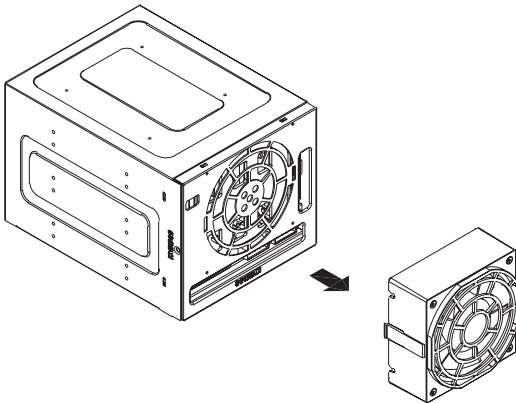


B. Accessing the Exhaust Fan:

1. Push the tabs located on both sides of the unit (as shown below:)



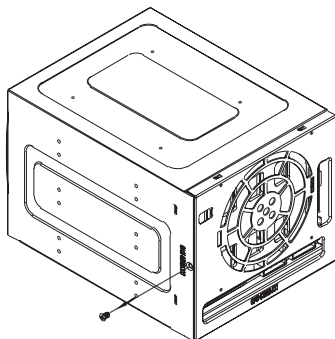
2. Pull out the fan (as shown below:)



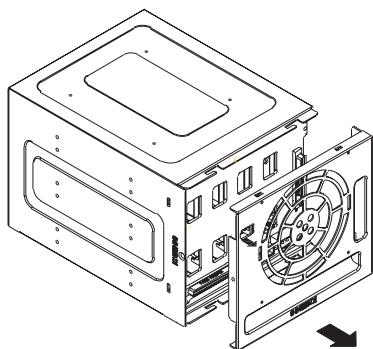
(*Note: For the SC-942 Chassis, the CSE-M35 Rear Exhaust Fan should not be used. Instead, the hot-swappable 120mm Chassis Fans included with the SC-942 Chassis should be connected to the Backplane of the CSE-M35S/CSE-M35T1 Mobile Rack.)

C. Accessing the Drive Backplane:

1. Unscrew the screw located on the side of the unit (as shown below:)



2. Pull out the Rear Bracket (as shown below:)



3. Access the Backplane (as shown below:)

