

HIFONICS®



MAXXSONICS

# POWER FROM THE GODS®

It is difficult to fathom that mere mortals can possess car audio products at this level. You crank up a Hifonics system you may feel as if you have climbed Mt. Olympus and stolen the lightning from the father of the gods himself, Zeus.

Hifonics has been setting the pace in the audio competition lanes since car audio competitions started. Whether you build a clear sound quality system that puts you in the mind of Aphrodite or an SPL system with the power of Thor's hammer – Hifonics will deliver.

Hifonics amplifiers offer A/B class technology for sound quality solutions, while offering Ultra D-Class™ on Mt. Olympus mono amplifiers, NGSD Next Generation Super D-Class® on Brutus Elite and Brutus BRX as well as Super D-Class on Zeus

Power From The Gods means subwoofers and speakers need to be equally worthy of a pedestal on Mt. Olympus. The Hifonics subwoofers are built insane for humans! Huge motor assemblies, high temperature multi-coated aluminum formers with flat wound high temperature voice coils show that Hifonics woofers are meant to sound incredible while handling all the power you can put to them.

While the new Atlas speakers will handle a great amount of power, they are designed to put smooth sound quality into your system. Using a silk dome tweeter and molded woven fiber polypropylene cone gives them great sound quality and reliability. Plus, the addition of a 12dB crossover on the components will give you a great sound that will filter out the undesirable frequencies.

## What's New:

**Mt. Olympus**

**Brutus Elite Amplifiers – BE**

**Brutus Amplifiers – BRX**

**All New Subwoofer Line**

**Atlas Speakers**

**MAXXLINK Amp Kits, Warranty**

## TABLE OF CONTENTS

### AMPLIFIERS

<b>Mt. Olympus.....</b>	<b>4</b>
<b>Brutus.....</b>	<b>6</b>
<b>Brutus Elite.....</b>	<b>8</b>
<b>Zeus.....</b>	<b>10</b>

### SUBWOOFERS

<b>Mt. Olympus.....</b>	<b>12</b>
<b>Brutus.....</b>	<b>14</b>
<b>Atlas.....</b>	<b>16</b>
<b>Hercules.....</b>	<b>18</b>
<b>Zeus.....</b>	<b>20</b>

### SPEAKERS

<b>Atlas.....</b>	<b>24</b>
<b>Triton.....</b>	<b>26</b>
<b>Accessories.....</b>	<b>28</b>
<b>Maxxlink.....</b>	<b>30</b>

# Mt. OLYMPUS

This is the top of the mountain. When your system design demands the absolute best, you will not suffer the excuses of mortals – Mt. Olympus from Hifonics has been engineered over two decades for a perfect balance in sound quality and power.

Take a look inside to find massive heavy-duty output devices and oversized MOSFET's in the PWM switching power supplies. Mega power transformers, audiophile grade components, military grade printed circuit boards complete the design.

## Ultra D-Class™

Ultra D-Class™ technology is at the very nerve center of our flagship Mt. Olympus. The proprietary “Ultra-D” design uses high-speed microprocessors with proprietary D/A conversion algorithms to efficiently control the Mt. Olympus current consumption. At very high listening levels, Hifonics Ultra D-Class results in lower distortion, higher current efficiencies and less heat than conventional D-Class amplifier designs. Compared to the competition, Ultra D-Class amplifiers are easier on your car's charging system.

## Super A/B Class™

Big power alone does not make a great system design; This is why Hifonics developed Super A/B Class™ as a perfect sound quality design for the stereo amplifiers to match the Mt. Olympus models that utilize the Ultra D-Class™ circuitry.

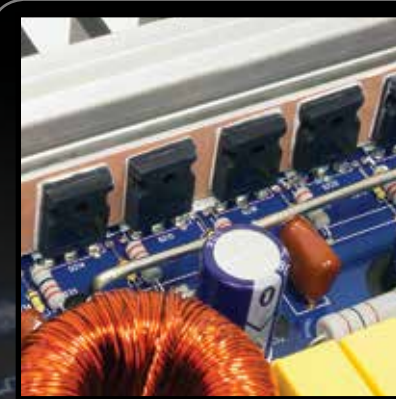
Super A/B Class™ designs are based on top 1% tolerance grade components. Super A/B Class insures the Mt. Olympus stereo amplifiers fill your needs for high-power and ultra-high end sound. The perfect system design, Mt. Olympus with Ultra D-Class™ on the subwoofer system and Super A/B Class™ for the mids and tweets.



Mega powerful transformers, audiophile grade components, military grade printed circuit boards



Twin turbo power supply torroids in a PWM MOSFET power supply design



Rock solid Ultra-Fi™ MOSFET outputs

## Capacitor

Check out MAXLINK capacitors from 1.5F to 35F

**MAXLINK™ Power / Amps**



Model	HERCULES 4K	ATLAS 6K	COLOSSUS 6.5K	BOLTAR 2K	COLOSSUS PRO 5K	JUPITER 1.5K
Watts	RMS/DYNAMIC	RMS/DYNAMIC	RMS/DYNAMIC	RMS/DYNAMIC	RMS/DYNAMIC	RMS/DYNAMIC
1-Ohm	1 x 2000 / 4000	1 x 3000 / 6000	2 x 1625 / 3250	n/a	2 x 1250 / 2500	n/a
2-Ohms	1 x 1600 / 3200	1 x 2100 / 4200	2 x 1125 / 2250	2 x 500 / 1000	2 x 950 / 1900	4 x 188 / 375
4-Ohms	1 x 900 / 1800	1 x 1200 / 2400	2 x 625 / 1250	2 x 350 / 700	2 x 600 / 1200	4 x 130 / 260
Mono Bridged @ 2-Ohms	n/a	n/a	1 x 3250 / 6500	n/a	1 x 2500 / 5000	n/a
Mono Bridged @ 4-Ohms	n/a	n/a	1 x 2250 / 4500	1 x 1000 / 2000	1 x 1900 / 3800	2 x 375 / 750
Dimensions L x W x H	19.75 x 8.97 x 2.76	21.71 x 8.97 x 2.76	23.64 x 8.97 x 2.76	21.71 x 8.97 x 2.76	38.64 x 8.97 x 2.76	17.77 x 8.97 x 2.76

# BRUTUS

Brutus, or BRX as those close to the gods call it, is all Go & Show. If your system is going to be shown at car shows and other competitions, take a very close look at the Brutus BRX. With an illuminated Hifonics logo, plus the lighted connectors and blue wash of light from the underside of the heatsink, even from a distance judges and friends will know, your system defines Power From The Gods. Brutus BRX is packed with features to enhance sound quality and power.

## NGSD Next Generation Super D-Class™

Hifonics has perfected the latest in NGSD digital chip technology to provide you with an extremely efficient, low temperature, high amplification system that others only dream about. There are several options for installation and the mono Next Generation Super D-Class Brutus amplifiers can run at 4,2 or 1-Ohm as well, for an even tighter bass response!

## Super A/B Class™

Developed for the flagship Mt. Olympus amplifiers, Super A/B Class™ is shared by the Brutus BRX and the Brutus Elite line. The perfect sound quality design for the stereo amplifiers to match the NEXT GEN Super-D.

NextGen  
NGSD  
SUPER-D



Molded and angled ILLUMINATED Terminals for stress free installation access



Accu-Cross™ crossovers and adjustments for sound shaping



Ultra-Fi™ MOSFETS

Model	BRX160.2	BRX320.4	BRX640.4	BRX1200.4	BRX1100.1D
1-Ohm	n/a	n/a	n/a	n/a	1 x 1100
2-Ohms	2 x 160	4 x 80	4 x 160	4 x 300	1 x 800
4-Ohms	2 x 80	4 x 40	4 x 80	4 x 150	1 x 450
Mono Bridged @ 4-Ohms	1 x 320	2 x 160	2 x 320	2 x 600	n/a
Dimensions L x W x H	10.72 x 10.31 x 2.52	13.17 x 10.31 x 2.52	15.92 x 10.31 x 2.52	21.43 x 10.31 x 2.52	14.35 x 10.31 x 2.52

Model	BRX1600.1D	BRX2000.1D	BRX2400.1D	BRX5000.5
1-Ohm	1 x 1600	1 x 2000	1 x 2400	1 x 1000
2-Ohms	1 x 1200	1 x 1400	1 x 1600	4 x 120 + 1 x 750
4-Ohms	1 x 600	1 x 700	1 x 850	4 x 60 + 1 x 475
Mono Bridged @ 4-Ohms	n/a	n/a	n/a	2 x 240
Dimensions L x W x H	15.92 x 10.31 x 2.52	16.71 x 10.31 x 2.52	18.68 x 10.31 x 2.52	21.43 x 10.31 x 2.52

# BRUTUS ELITE

The Brutus Elite is special. You won't find it on the internet. You won't find it on internet auctions. You will only find the Brutus ELITE available at specialty shops that can maximize the installation and your system design.

## NGSD Next Generation Super D-Class™ Rules

Hifonics has perfected the latest in NGSD digital chip technology to provide you with an extremely efficient, low temperature, high amplification system that others only dream about. There are several options for installation and the mono Next Generation Super D-Class Brutus amplifiers can run at 4,2 or 1-Ohm as well, for an even tighter bass response!

## Super A/B Class™ Rules

Developed for the flagship Mt. Olympus amplifiers, Super A/B Class™ is shared by the Brutus BRX and the Brutus Elite line. The perfect sound quality design for the stereo amplifiers to match the NEXT GEN Super-D.



Ultra-Fi™ MOSFETS



Accu-Cross™ crossovers and adjustments for sound shaping



Molded and angled Terminals for stress free installation access



## VIDEO LINK

Scan to check out a technical video on the MAXLINK caps.



## Capacitors

### EVERY SYSTEM NEEDS A CAP

...unless this new audio system is for sports and AM talk madness. All modern dynamic MUSIC demands power and the MAXLINK HYPERcharge caps are designed to deliver it. The MAXLINK caps delivers the lowest ESR (equivalent series resistance) in the industry allowing them to recharge faster than you can put your phone down so the cop doesn't see you texting! This is accomplished through the use of a hybrid design that uses two different types of capacitors in one housing to improve charge and release times.

At the top are the uniquely engineered 35 farad and 5 farad caps, these components are designed to look and feel like

nothing on the market. They have multiple in/out for power and ground, integrated Allen bolts and a two piece design to make mounting easy. MAXLINK caps are also available in 1.5 and 3.0 farads in digital and non-digital versions. Mounting hardware is included. ⚡

### TOTAL SYSTEM POWER

5001 and above  
3001 to 5000 Watts  
1501 to 3000 Watts  
0 to 1500 Watts

### RECOMMENDED CAP

VHC35V3  
VHC5V3  
VDC3.0V2 or VC3.0V2  
VDC1.5V1 or VC1.5V1



Model	BE500.4	BE800.4	BE1200.1D	BE1700.1D	BE2100.1D	BE2500.1D
1-Ohm	n/a	n/a	1 x 1200	1 x 1700	1 x 2100	1 x 2500
2-Ohms	4 x 125	4 x 200	1 x 800	1 x 1200	1 x 1400	1 x 1700
4-Ohms	4 x 65	4 x 100	1 x 450	1 x 600	1 x 700	1 x 850
Mono Bridged @ 4-Ohms	2 x 250	2 x 400	n/a	n/a	n/a	n/a
Dimensions L x W x H	12.6 x 9.65 x 2.48	13.78 x 9.65 x 2.48	13.78 x 9.65 x 2.48	15.35 x 9.65 x 2.48	16.14 x 9.65 x 2.48	18.11 x 9.65 x 2.48

# ZEUS

Father of the Gods - Zeus delivers a full range of amplifiers to the mortal car audio enthusiasts of Earth. The Zeus line of amplifiers from Hifonics is a throw back to the original Hifonics amplifiers that help start the car audio and SPL craze. These amplifiers are packed with technology for great sound and huge power.



Ultra-Fi™ MOSFET output devices



SPC Simpatico Coil Design Pulse Width Modulated power supply

- Complete Lineup of Super Class A/B Multi-Channel Amplifiers and Class D Mono Amplifiers
- Illuminated Hifonics Badge
- Old School Hifonics Heatsink for Superior Heat Dissipation
- Military Grade PCB
- SPC - Simpatico Coil Design
- HSMD - Hifonics Surface Mount Design
- PWM MOSFET Power Supply for Maximum Current Levels
- Diagnostic Indicators
- DC, Short Circuit, Thermal and Overload Protection
- Low Level RCA Inputs and Outputs

ZRX2000.1D

Model	ZRX2400.1D	ZRX3200.1D
1-Ohm	1 x 2400	1 x 3200
2-Ohms	1 x 1200	1 x 1600
4-Ohms	1 x 650	1 x 800
Mono Bridged @ 4-Ohms	n/a	n/a
Dimensions L x W x H	17.17 x 10 x 2.4	19.92 x 10 x 2.4

Model	ZRX500.2	ZRX1200.2	ZRX600.4	ZRX1000.4	ZRX2000.4	ZRX1200.1D	ZRX1800.1D
1-Ohm	n/a	n/a	n/a	n/a	n/a	1 x 1200	1 x 1800
2-Ohms	2 x 250	2 x 600	4 x 150	4 x 250	4 x 500	1 x 600	1 x 900
4-Ohms	2 x 125	2 x 300	4 x 75	4 x 125	4 x 250	1 x 400	1 x 500
Mono Bridged @ 4-Ohms	1 x 500	1 x 1200	2 x 300	2 x 500	2 x 1000	n/a	n/a
Dimensions L x W x H	10 x 10 x 2.4	17.17 x 10 x 2.4	13.62 x 10 x 2.4	16.38 x 10 x 2.4	21.89 x 10 x 2.4	12 x 10 x 2.4	14.8 x 10 x 2.4



## RCA Cables

- 1 QUADRAtwist**  
Conductor and shield are twisted together then left and right cables are twisted again to maximize noise rejection
- 2 100% OXYGEN FREE COPPER**  
Most pure copper wire available for improved signal transfer
- 3 HIGH TEMP PVC JACKET**  
Best and most flexible protection to insulate the wire from heat
- 4 HEAVY Y-STOPPER**  
Protects area where right and left cables join together to eliminate cable split during install
- 5 SPLIT TIP**  
The RCA tip is split so that it opens and increases surface area for the signal cables conductor
- 6 TAPERED COLLAR**  
The collar is tapered and split to establish a firm grip on the jack and increase contact area for the RCA shield
- 7 RUBBER GRIP**  
The rear of each RCA is trimmed with a rubber grip for that huge fist of fingers making it easier to install
- 8 ALUMINUM JACKS**  
Cast aluminum jacks will last longer than most cars.

**V3** **V3 SIGNAL CABLES**  
Available in 20, 16, 10, 6 & 3 foot lengths and included in all V3 level amplifier kits.



# Mt. OLYMPUS

Whether you are looking for high SPL or incredible SQ, the Olympus series of subwoofers provides the answer. These subs were designed from the ground up catering to the needs of audio enthusiasts looking to push systems to the limit. Hifonics' "Power From The Gods" infamous motto is evident in these subs with 3" voice coils for high power handling, large double-stacked magnets for increased motor strength and 1" high roll surround for increased excursion.

**OLM1600D2**  
 High power, linear compression foam surround  
 3" voice coil  
 182 oz magnet  
 DVC 2-Ohm  
 1600wrms/3200wmaxx

**OLM800D2/OLM800D4**  
 High Roll Santoprene Rubber Surround  
 2.5" High-Temp Voice Coil on Aluminum Former  
 85oz High Energy Magnet  
 DVC 2-Ohm and DVC 4-Ohm  
 800wrms/1600wmaxx

- PPC power cone is a one piece pressed paper cone/dustcap
- Ultra Ridged Aluminum Die Cast Basket
- Reinforced cone neck joint
- Heat dispersing ported back plate
- Optimally spaced dual spider design
- Nickel plated P&I (push & insert) wire terminals

Model	OLM800D2	OLM800D4	OLM1600D2
Size	12"	12"	12"
Power handling			
RMS	800	800	1600
MAXX	1600	1600	3200
Impedance	Dual 2-Ohm	Dual 4-Ohm	Dual 2-Ohm
Cut-Out Ø	10.77"	10.77"	10.77"
Chassis depth from flange	6.03"	6.03"	6.82"



**VIDEO LINK**  
 Scan to check out a technical video on the Mt. Olympus subwoofers.

## POWER GUIDE

800-1600 WATTS = Mt. OLYMPUS

### FLOOR TO DOOR

MAXLINK Sound Deadener is designed with Butyl rubber. Very flexible, no heat gun required and not susceptible to extreme hot and cold temperatures. It's a snap for installation and NO toxic chemicals required for cleaning the door. Just wipe off any dust and you're ready to go. But, the BEST part may be that it is flat packed! Hello?? No unrolling it in the sun to get it flat. It's ready to go from FLOOR TO DOOR when it's delivered. The UPS guy can help lay it up. Available in retail packs and full vehicle packs to match the job.

### Sound Deadener



PPC power cone is a one piece pressed paper cone/dustcap



Heat dispersing ported back plate



Nickel plated P&I (push & insert) wire terminals

# BRUTUS

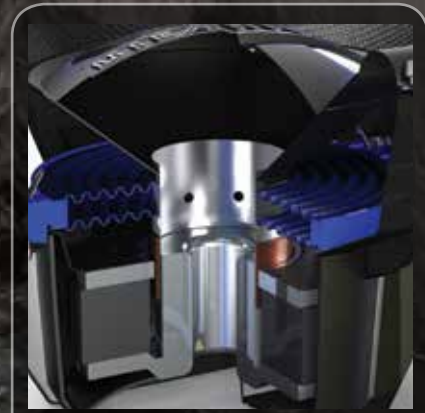
For those that do not want to climb to the top of Mt. Olympus to choose a woofer, Hifonics offers the Brutus line of woofers. Built for stunning sound quality and Brutus strength because the gods demand it that way. You will see the line starts with 3" coils on the Mt. Olympus OLM1600D2 and in Brutus we move to a multi-layer 2.5" coil. Here we have cut away the skin of the Brutus woofer so you can gaze upon the gods and understand why the Brutus and other Hifonics woofers are second to none.

## POWER GUIDE

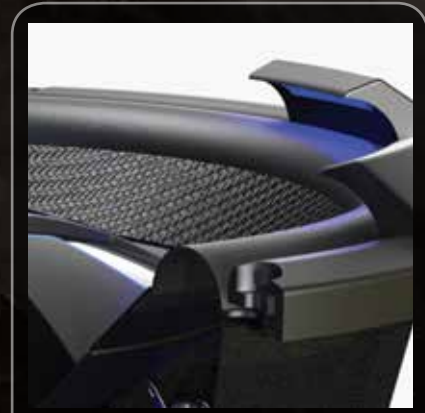
450-600 WATTS = BRUTUS



Also available BRZ12SQD4 and BRZ15D4



Vented aluminum former holds a 2.5" voice coil



Satin black linear Butyl rubber surround

Model	BRX12D4	BRZ12SQD4	BRZ15D4
Size	12"	12"	15"
Power handling	RMS	450	600
	MAXX	900	1200
Impedance	Dual 4-Ohm	Dual 4-Ohm	Dual 4-Ohm
Cut-Out Ø	10.94"	11.18"	13.86"
Chassis depth from flange	5.69"	6.4"	7.13"

### 2XIL Ring

- The 2XIL Ring is a heavy duty ABS trim ring with dual illumination. A great way to finish off your installation and the hint of illumination will draw just enough attention to your choice of the best woofer from atop Mt. Olympus

### Butyl Surround

- Satin black linear Butyl rubber surround along with the REZTx spiders help keep the piston motion of the subwoofer linear and smooth

### Woven Pressed Polypropylene Cone

- Heavy Duty woven texture polypropylene cone develops big bass while dramatically reducing cone flex which can rob the system of low deep bass.

### H CAP

- Injection molded two tone polypropylene dust cap adds strength to the woofer and proudly holds the Hifonics logo and H - mark of the Gods.

### P & I Terminals

- Nickel-plated 8 gauge P&I (push and insert) speaker terminals to secure MAXXLINK speaker wire connections easily

### Dual REZTx Spiders

- Dual REZTx (Resin infused textile) spiders along with the Butyl surround, allow the Brutus woofer to handle more power without adding non-linear distortions.

### REZTx Collar

- Heavy Duty REZTx spider mount to secure upper and lower REZTx spiders

### D2S Steel frame

- Powder coated D2S Steel frame is a Deep Draw Stamped Steel design for incredible strength to handle deep powerful bass

### 56oz Motor

- Double stacked high energy motor assembly with 56oz magnets increases power handling which increases SPL – sound pressure level.

### Voice Coil & Former Assembly

- Vented aluminum former holds a 2.5" voice coil while allowing the heat to be exchange through the back pole piece and through the dual REZTx spiders



# ATLAS

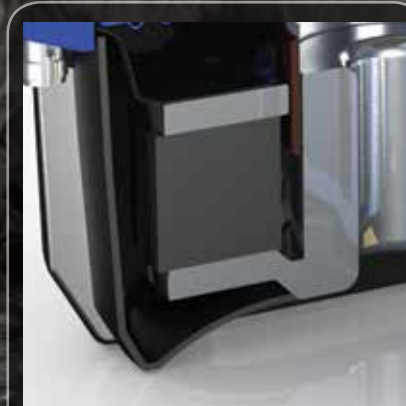
The God Atlas bears the burden of bass for the entire planet. It is a daunting challenge but the Hifonics Atlas woofer is built to handle the pressure and deliver the music power. Built with a 2.0" voice coil and 41oz motor assembly, the Atlas woofer is ready to pound the mortals that ride in your automotive throne.

## POWER GUIDE

400 WATTS = ATLAS



Nickel-plated P&I (push and insert) speaker terminals



Double stacked high energy motor assembly



Heavy Duty ABS motor cover

Model	ASW12D4	
Size	12"	
Power handling	RMS	400
	MAXX	800
Impedance	Dual 4-Ohm	
Cut-Out Ø	10.94"	
Chassis depth from flange	5.32"	

### Trim Ring

- Heavy duty ABS trim ring to keep installations clean

### Butyl Surround

- Satin black linear Butyl rubber surround along with the Atlas spider helps keep the piston motion of the subwoofer linear and smooth

### Satin Black Polypropylene Cone

- Heavy Duty injection molded polypropylene cone adds strength to bass energy

### H CAP

- Injection molded polypropylene dust cap adds strength to the subwoofer and proudly holds the Hifonics logo and H - mark of the Gods.

### P & I Terminals

- Nickel-plated 8 gauge P&I (push and insert) speaker terminals to secure MAXXLINK speaker wire connections easily

### Cotton Spider

- Specialized Hifonics cotton spider, along with the Butyl surround, allows the Atlas woofer to handle more power without adding non-linear distortions.

### Spider Collar

- Specialized Hifonics spider mount to secure the Atlas spider

### D2S Steel frame

- Powder coated D2S Steel frame is a Deep Draw Stamped Steel design for incredible strength to handle power deep bass

### 41oz Motor

- Double stacked high energy motor assembly with 41oz magnets increases power handling which increases SPL – sound pressure level.

### Voice Coil & Former Assembly

- Vented aluminum former holds a 2.0" voice coil while allowing the heat to be exchanged through the back pole piece and through the dual REZTx spiders

### Motor cover

- Heavy Duty ABS to keep the subwoofer looking good and protected from the action in the trunk.

### The H Stamp

- The Hifonics H is the mark of the Gods.

# HERCULES

Atlas has an uncle you know! Do you know his name? They call him Hercules. Powerful, Aggressive. Loud. Driven with an inexhaustible amount of energy to deliver huge power for small to moderate sized systems. Built with 2.0" voice coil and 30oz motor assembly, the Hercules woofers are available in a 10" and a 12".

## POWER GUIDE

300-350 WATTS = ATLAS



Model	HWX10D4	HWX12D4	
Size	10"	12"	
Power handling	RMS	300	350
	MAXX	600	700
Impedance	Dual 4-Ohm	Dual 4-Ohm	
Cut-Out Ø	9.02"	10.85"	
Chassis depth from flange	4.9"	5.15"	



Nickel-plated P&I (push and insert) speaker terminals



Satin black linear Butyl rubber surround



Powder coated OTS Steel frame

### Butyl Surround

- Satin black linear Butyl rubber surround along with the Hercules spider helps keep the piston motion of the subwoofer linear and smooth

### Satin Black Polypropylene Cone

- Heavy Duty injection molded polypropylene cone adds strength to bass energy

### Thermoformed Dust Cap

- Dust cap adds strength to the subwoofer and proudly displays the Hifonics logo

### P & I Terminals

- Nickel-plated P&I (push and insert) speaker terminals to secure MAXXLINK speaker wire connections easily

### Cotton Spider

- Specialized Hifonics cotton spider, along with the Butyl surround, allows the Hercules woofer to handle more power with minimum distortions.

### Custom Steel frame

- Heavy Duty powder coated custom steel frame.

### Back Venting

- Unique Hifonics design Back Venting allows more heat to be exchanged with cool air allowing more power handling and increased reliability.

### 30oz Motor

- Vented high energy motor assembly with 30oz magnets increases power handling and increases SPL

### Voice Coil & Former Assembly

- Vented aluminum former holds a 2.0" voice coil while allowing the heat to be exchange through the back pole piece, the Hercules Vent and through the spiders. Less heat means less distortion.

### Motor cover

- Heavy Duty PVC cover to keep the subwoofer looking good and protected from the action in the trunk.

### The H Stamp

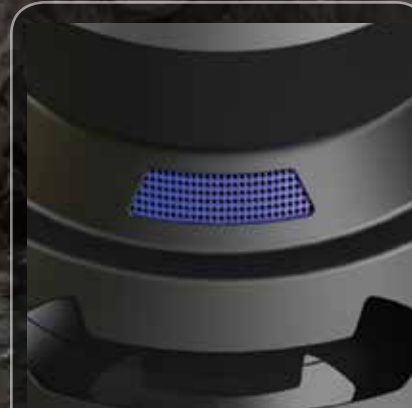
- The Hifonics H is the mark of the Gods.

# ZEUS

The new Zeus is a great subwoofer to accomplish the deep bass and impactful music power that today's digital formats demand. Available in a 12", you can wire in pairs or multiple pairs to create a Wall of Power From The Gods!



The pressure treated blue foam surround



Unique Hifonics design Back Venting



Vented high energy motor assembly with 27oz magnets



Model	ZW12D4
Size	12"
Power handling	RMS 300
	MAXX 600
Impedance	Dual 4-Ohm
Cut-Out Ø	10.96"
Chassis depth from flange	4.92"

## POWER GUIDE

300 WATTS = ZEUS

### Foam Surround

- The pressure treated blue foam surround along with the Zeus spider helps keep the piston motion of the subwoofer linear and distortion free

### Thermoformed Cone and Dust Cap

- Heavy Duty Thermoformed cone and dust cap adds strength to bass energy and proudly displays the Hifonics logo

### Cotton Spider

- Specialized Hifonics cotton spider, along with the surround, allows the Zeus woofer to handle more power with minimum distortions.

### Steel frame

- Heavy Duty powder coated steel frame.

### Back Venting

- Unique Hifonics design Back Venting allows more heat to be exchanged with cool air allowing more power handling and increased reliability.

### 27oz Motor

- Vented high energy motor assembly with 27oz magnets increases power handling and increases SPL

### Voice Coil & Former Assembly

- Vented aluminum former holds a 1.5" voice coil while allowing the heat to be exchanged. Less heat means less distortion.

### Motor cover

- Heavy Duty PVC cover to keep the subwoofer looking good and protected



HIFONICS  
**TRITON**  
200 WATTS RMS  
400 WATTS MAXX  
HFB50-14  
8" FULL RANGE  
4-OHMS



ATLAS  
HIFONICS  
250 WATTS RMS  
500 WATTS MAXX

# SPEAKERS

# ATLAS

The burden of great sound is securely held on the shoulders of Atlas. Hifonics has delivered a stunning selection of speakers with the Atlas line. Designed as the "voice" of your system, these are especially for us mortals with very discerning ears; Atlas! This line of speakers exists for replacing those rags that came in the car and offer a perfect solution for car audio enthusiasts that will not settle for a "me too" look-a-like speakers. The full line; from 4" to 6x9" plus two choices for more high end component systems, will put your stereo on par with the sounds of the gods.



- Injection molded polypropylene carbon fiber patterned cone
- UV Resistant foam surround



- Ultra rigid Stamp Steel basket with chrome plating
- P&I Print loaded terminals



- High dampening PVC magnet boot



- 12dB passive crossover for component speakers



- 3/4" silk dome tweeter flush mount, surface mount adaptors



- ABS injected grills designed by the Gods
- Grills are not included with the 5x7"/6x8" speakers



Model	ATL4CX	ATL5.25CX	ATL5768CX	ATL653	ATL693	ATL5.25C	ATL6.5C
Size / Type	4" Coax	5.25" Coax	5 x 7"/6 X 8" Coax	6.5" 3-Way	6 x 9" 3-Way	5.25" Comp	6.5" Comp
Power handling	RMS 30	40	50	45	65	45	50
	MAXX 120	150	180	170	250	170	190
Impedance	4-Ohm	4-Ohm	4-Ohm	4-Ohm	4-Ohm	4-Ohm	4-Ohm
Sensitivity	89dB	90dB	90dB	90dB	89dB	89dB	90dB
Frequency Response	48Hz - 20KHz	48Hz - 21KHz	48Hz - 20KHz	48Hz - 21KHz	45Hz - 20KHz	46Hz - 21KHz	46Hz - 21KHz
Crossover Frequency	3.5KHZ	3.5KHZ	3.5KHZ	3.5KHZ	3.5KHZ	3.5KHZ	3.5KHZ
Crossover Slope	6/12dB	6/12dB	6/12dB	6/12dB	6/12dB	6/12dB	6/12dB
Cut-Out Ø	3.7"	4.47"	4.1" x 7.14"	5.75"	6.02" x 8.74"	4.47"	5.75"
Chassis depth from flange	1.83"	2.23"	2.42"	2.55"	3.09"	2.23"	2.55"

Hifonics Atlas speakers, great and powerful sound is all but guaranteed. With sizes that fit nearly every OEM application, you can rest assured that your new Atlas speakers matched with an Atlas or Brutus woofer and a Hifonics amplifier will fill your car with the POWER From The GODS.

When the Gods want to make announcements to us peasants living at the bottom of Mt. Olympus, they must be heard. And since clouds don't have a great ability to produce the voice of a god, the Gods use Hifonics Triton PRO. The Triton PRO line from Hifonics is meant to be EXTREMELY loud and take up very little space. Most enthusiasts match a full range PRO 8" square Triton's with a Brutus or Atlas subwoofer, but for some types of music many enthusiast use the Triton in full range spectrum. The Triton is available in 4 ohm. The 4 ohm has a solid blue illumination phase plug. The Triton speaker is perfect for those outdoor events where your car has to provide the tunes for the BBQ. Triton is also available in a 8-Ohm version.



Model	HF8SQ-i4	HF8SQ
Size / Type	8" Square	8" Square
Power handling	RMS	200
	MAXX	400
Impedance	4-Ohm	8-Ohm
Sensitivity	98.5dB 1W/1M	98.5dB 1W/1M
Frequency Response	90Hz - 10KHz	90Hz - 10KHz
Cut-Out Ø	7.38" x 7.38"	7.38" x 7.38"
Chassis depth from flange	4.11"	4.11"

NOTE: HF8SQ IS NOT ILLUMINATED.



## Sound Deadener

### FLOOR TO DOOR

MAXXLINK Sound Deadener is designed with Butyl rubber. Very flexible, no heat gun required and not susceptible to extreme hot and cold temperatures. It's a snap for installation and NO toxic chemicals required for cleaning the door. Just wipe off any dust and you're ready to go. But, the BEST part may be that it is flat packed! Hello?? No unrolling it in the sun to get it flat. It's ready to go from FLOOR TO DOOR when it's delivered. The UPS guy can help lay it up. Available in retail packs and full vehicle packs to match the job.



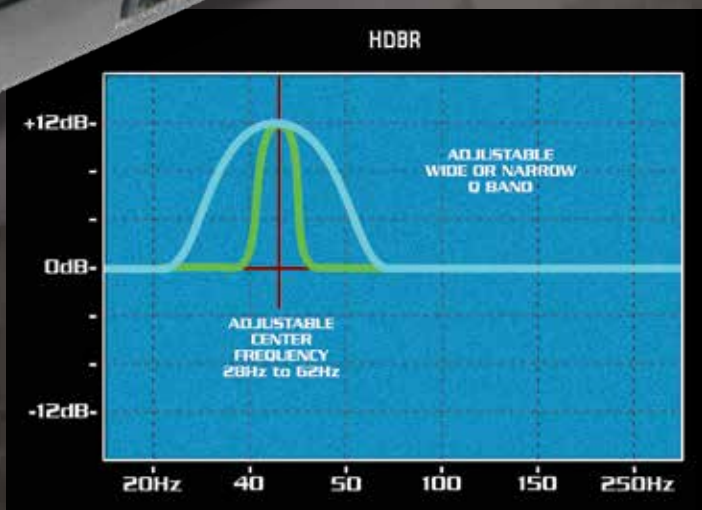
- Double rolled stamped steel baskets
- 40oz magnets
- Spade terminals



- Treated paper cone
- "W" compression foam surround
- Removable gasket



- Illuminated Phase plug
- 1.5" kapton voice
- Aluminum former



**Bass Driver:** The Hifonics Digital Bass Restoration (HDBR) processor contains a Bass Driver circuit that accurately recreates and injects Low Frequency information back into the signal path. What that means in everyday terms is that this Signal Processor will give more bass impact to your best compact discs and even your lowest quality recordings.

**Bass Equalization Circuit:** The HDBR has a unique equalization circuit that contours the restored bass to your speaker systems.

**Dash Mount Remote Control:** Our unit comes with a Dash Mountable Remote Control that allows you to enjoy the effects of the processed signal without having to leave the drivers seat. The dash mount control has an LED indicator that will glow brighter as you add more bass or dimmer when you decrease it.

**Bass Maximizer Indicator:** Not only does the HDBR provide good music to your ears, but it also gives you some visual enjoyment as well. On the chassis of the processor there are three LED indicators that flash when the bass maximization circuit is activated.

**Bass Output Control:** The HDBR has the ability to produce large amounts of deep, ear blowing bass without damaging your speakers. The Bass Output Control circuit allow the Hifonics Digital Bass Restoration processor to maximize the bass output of any autosound audio system while restraining destructive bursts.

## HFXR

2 channel or 4 channel X-Over with 8.5 volt line driver  
 Select 2- or 4-channel inputs with input switch  
 Direct sub-in receivers with sub-outs 0 – 12dB bass boost at bass remote  
 Maximum pre-amp output: 8.5-volts RMS45Hz bass boost with quasi-parametric EQ  
 Selectable for mono or stereo woofers  
 180° phase-shift switch  
 Second order Butterworth front and rear channel high-pass  
 Level adjustments for front, rear and sub channels  
 2-channel full-range RCA preamp Cascading output

## HFEQ

1/2 DIN ISO mount chassis 4 band EQ w/9 volt line driver  
 4-band equalizer with +18dB variable  
 Master volume and subwoofer volume control  
 Front to rear dual-amp fader  
 2-audio inputs with level matching  
 Selectable 12dB high-pass front / rear crossover  
 Selectable 12dB low-pass sub output  
 Selectable for mono or stereo

## BXiPro 1.0 & BXiPro 2.0

Digital Bass Enhancement Processors

**Bass Driver:** The BXiPRO contains a Bass Driver circuit that an accurately recreates and injects Low frequency information back into the signal path. What that means in everyday terms in everyday terms is that the BASS BOOSTER will give more bass impact to your best compact discs or even your old tapes.

## BXiPro 1.0

Digital Bass Enhancement Processor

## BXiPro 2.0

Same features as the BXiPro 1.0 but with additional features of input noise reduction circuitry and master volume on the unit plus illuminated controls.





Your new HIFONICS system is only as strong as its weakest link. That's why HIFONICS recommends MAXXLINK installation accessories. MAXXLINK accessories are specifically engineered for HIFONICS amps and speakers. Using MAXXLINK accessories will ensure optimum performance from your system. We're so confident that we'll even increase your HIFONICS amplifier warranty when hooked up to a qualifying MAXXLINK amplifier installation kit.

From battery to bumper, MAXXLINK has you covered with a full line of accessories including...

**Amplifier Installation Kits:** Three levels of product that cover nearly every application and price point and all are BC-5W2 marine compliant

**RCA Signal Cables:** Three levels of RCA cables that offer class leading noise isolation and cutting-edge construction.

**Power & Ground Distribution Products:** From battery terminals, to fuse holders and distribution blocks, MAXXLINK utilizes only pure non-recycled brass to let the power flow!

**Line Output Converters:** Three levels of line output converters with two to six channels of input and output that cover nearly any input power range or application imaginable.

**HYPERcharge Capacitors:** Every amplifier can use more power and MAXXLINK gives you six different choices that cover applications from 1,000 to 10,000 watts!

**HYPERmat Sound Deadener:** MAXXLINK's install-ready flat-packed sound deadener uses a proprietary butyl based compound fused to an aluminum heat shield. Check out the car kit for a pre-cut complete car solution.

**Bulk Spooled Wire:** Based on the same wire found in MAXXLINK amp kits, bulk wire is available in a variety of lengths and gauges to cover nearly any application.



## RCA Cables

V3

### QUADRAtwist

Featured in V3 amplifier kits and in our best RCA signal cables. The best way to reject unwanted engine noise is to twist your conductor and shield. QUADRAtwist takes this to the next level by twisting both the right and left RCAs to add another dimension of noise rejection.

V2

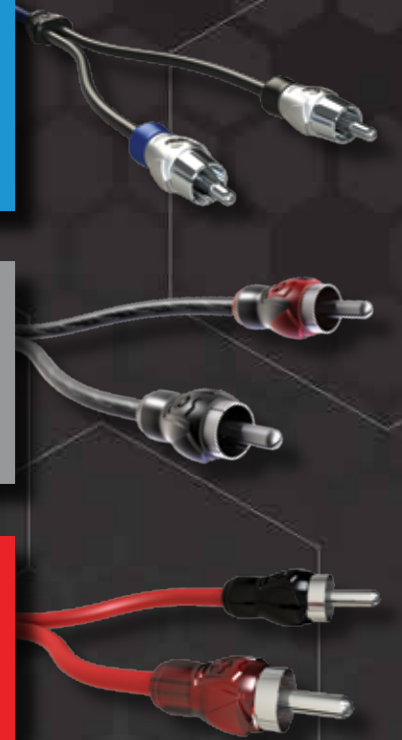
### DUOtwist

Rejecting noise in two conductor cables requires that the conductor and shield be twisted together. All MAXXLINK DUOtwist cables use a proprietary right-angle twist to offer the highest level of rejection available in its category.

V1

### UNItwist

V1 signal cables employ a coaxial design but it's not your standard coaxial cable. The center conductor is not a solid strand but it has many precision woven tinned copper strands that offers improved flexibility. While it may be inexpensive, it takes sound quality and noise rejection very seriously.



## Line Output Converters

### INSTALLATION FLEXIBILITY

MAXXLINK offers several LOC choices, the demand for the VLOC-6V3 since its introduction has been insane. The VLOC-6V3 is a high-end six channel line output converter that will handle nearly an unlimited amount of voltage input. With built in signal sense turn-on the system will not bump and tick, regardless of power. Plus, summing and blending allow full control of a full range signal. The VLOC-6V3 also gives the additional flexibility of a line driver feature to allow signal boost to the amplifiers which permits the system to be properly attenuated. Once installed, the VLOC-6V3 unit allows all the system controls to operate as stock.



Also in the Line Output Converter mix are the VLOC-2V3 and VLOC-4V3, two and four channel LOC's that also offer the same signal sense turn-on technology allowing installations to be perfectly quiet of turn on bumps and thumps. LOC's are also available in 35 and 50 watt versions. Lastly, there is also a ground loop isolator available from MAXXLINK to eliminate RCA induced noise in the system. Great music in the car starts with silence and then great signal control. MAXXLINK LOC's keep it quiet and give you control.