
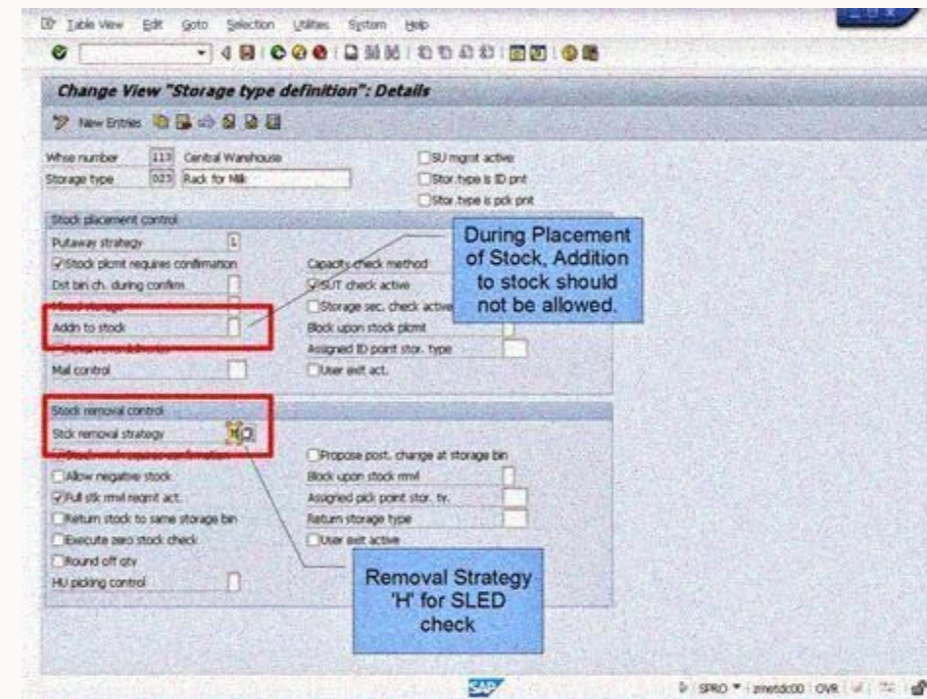


I'm not robot  reCAPTCHA

I am not robot!

How do you check shelf life in sap

How to check shelf life in sap. How do you check shelf life expiry date in sap. How to check expiry date in sap.



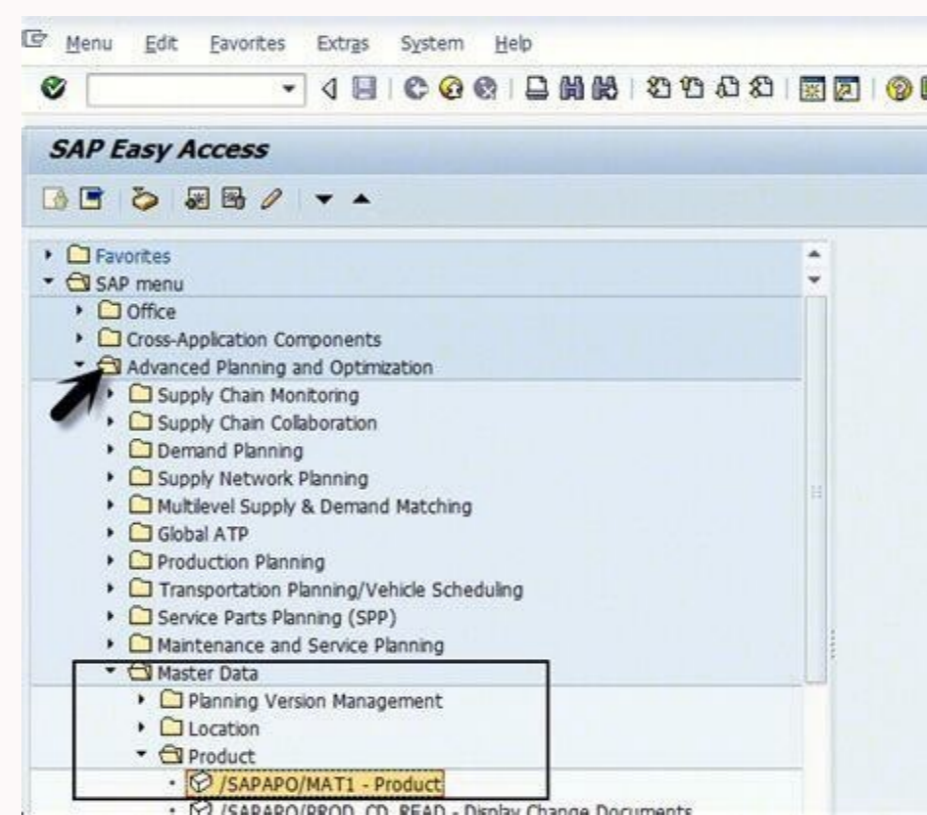
When Values of minimum and total shelf life are updated in material master The system assumes that the date entered upon goods receipt is the material's date of production. It then calculates a shelf life expiration date from the date of production plus the total shelf life SLED= Date of Production + No. of Days/Months/Years When Values of minimum and total shelf life are not updated in material master The system assumes that the date entered upon goods receipt is the material's shelf life expiration date. In both cases, the system updates the shelf life expiration date in the batch master record and in the material document if the goods receipt is accepted. Minimum Remaining Shelf Life:- Minimum amount of time for which the material must be kept upon goods receipt accepted by system. The function of this field is to put check during any Stock Posting. e.g. Total shelf life of product is 24 Months and in material master minimum shelf life is 2 months. So after 22 months from date of manufacturing system will not allow any stock posting. Implementation of expiry date check at goods receipt can be done via two methods: Entry of manufacturing/expiry date during GR (MIGO) Entry of manufacturing/expiry date during GR (CO11N/COR6N) In this blog post , we will go through the scenario of manufacturing/expiry date during GR (MIGO) Configuration: SPRO-> Batch Management -> SLED -> Set Expiration Date check (OMJ5)

2. Activate SLED check at 101 movement type = 1 (Enter and check manufacturing/expiry date during GR) Illustration: Case 1: Raw material procured from vendor with Minimum and total shelf life maintained in material master a) When minimum shelf life and total shelf life are, maintain in material master. It is mandatory to enter date of production during GRN else below error will be displayed. b) Suppose posting date is on 11-06-2020 and date of production entered is in past for batch as 11-05-2020. System will display below error and will not allow to do posting. c) Suppose Date of manufacturing of batch entered is 12.05.2020 System will display below error message d) When date of manufacturing is in future, system will display below error Logically, production date cannot be greater than GR date. In order to change this warning message into error, Message number will be changed from warning to Error in OMCQ transaction. Once this change is done and will try to do GR again, system will display below error message Case 2: When minimum and total shelf life is not maintained in material master In this case, system will not ask to enter date of production. Shelf life and date of production can be updated as blank or it can be updated manually during GRN and same will be updated in batch master Case 3: When minimum shelf life is maintained in material master and total shelf life is blank. In this case, system will ask to enter shelf life as minimum shelf life is maintained in material master Suppose SLED entered is in past say 19.05.2020, system will display below error When SLED entered as current date, system will display below error message System will only allow to do posting as per minimum shelf life of 10 days In this case, only expiry date will be updated in batch master. Case 4 : Minimum shelf life is blank and Total shelf life is maintained in material master This case is not allowed, as we have to enter put minimum shelf life Conclusion: We will be able to understand and analyze the system behavior when minimum shelf life and total shelf life data is maintained in material master. Thanks.... I hope you will like this blog post. Any feedback or improvements in blog post will be highly appreciated so that it will be helpful to community members Regards, Amit Sharma Perishable produce normally has a shelf-life expiration date.

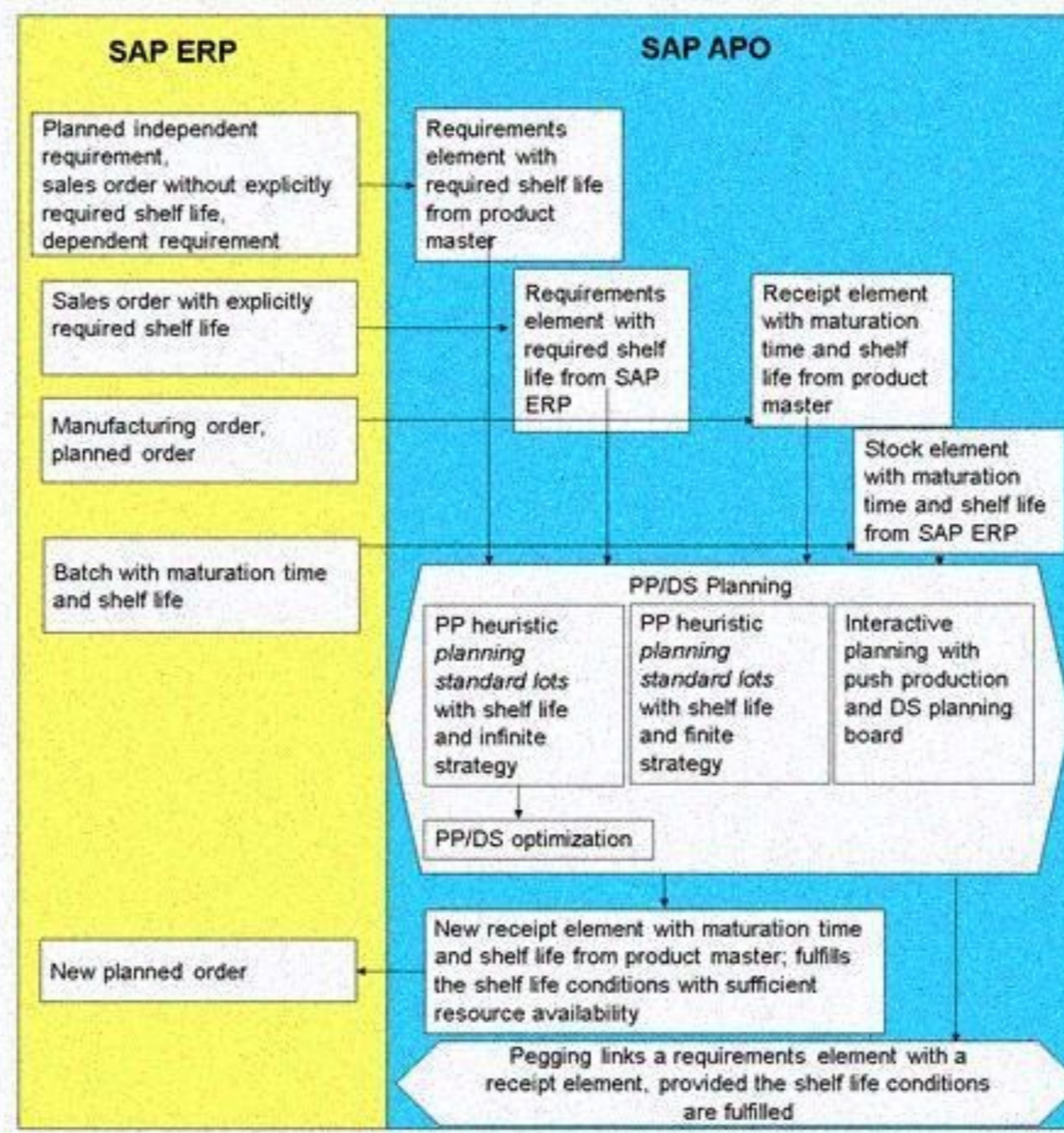
The shelf-life date of perishable produce is normally checked at goods receipt.

The system supports you in doing this. This shelf-life expiration check is only made when the following requirements are met: The minimum remaining shelf-life that an article must have at goods receipt must be maintained in the article master record or in the purchase order. The system will reject the goods receipt if the minimum remaining shelf-life is not met. The shelf-life expiration date check must be activated in Customizing for Inventory Management for the relevant site and movement type. Fields in the Article Master Record The following fields in the article master record are relevant for the shelf life expiration date check: Minimum remaining shelf life in days Total shelf life in days If you do not enter a total shelf life, you enter the shelf life expiration date when entering goods movements If you enter a total shelf life, you enter the date of manufacture when entering goods movements. The system automatically calculates the shelf life expiration date from the date of manufacture and the total shelf life. Both fields are found on the storage data screen in the article master. Shelf Life Expiration Date Check Articles not subject to a batch-management requirement If the shelf life expiration date check is active, you must enter the shelf life expiration date or the date of production at goods receipt. The system checks at goods receipt whether the remaining shelf-life entered in the purchase order or in the article master record can be complied with.

If not, a warning or an error message appears, depending on how your system is configured. When you post a goods receipt, the shelf life expiration date is stored in the article document.



In both cases, the system updates the shelf life expiration date in the batch master record and in the material document if the goods receipt is accepted. Minimum Remaining Shelf Life:- Minimum amount of time for which the material must be kept upon goods receipt accepted by system. The function of this field is to put check during any Stock Posting. e.g. Total shelf life of product is 24 Months and in material master minimum shelf life is 2 months. So after 22 months from date of manufacturing system will not allow any stock posting. Implementation of expiry date check at goods receipt can be done via two methods: Entry of manufacturing/expiry date during GR (MIGO) Entry of manufacturing/expiry date during GR (CO11N/COR6N) In this blog post , we will go through the scenario of manufacturing/expiry date during GR (MIGO) Configuration: SPRO-> Batch Management -> SLED -> Set Expiration Date check (OMJ5) 2.



When Values of minimum and total shelf life are updated in material master The system assumes that the date entered upon goods receipt is the material's date of production. It then calculates a shelf life expiration date from the date of production plus the total shelf life $SLED = \text{Date of Production} + \text{No. of Days/Months/Years}$ When Values of minimum and total shelf life are not updated in material master The system assumes that the date entered upon goods receipt is the material's shelf life expiration date. In both cases, the system updates the shelf life expiration date in the batch master record and in the material document if the goods receipt is accepted. Minimum Remaining Shelf Life:- Minimum amount of time for which the material must be kept upon goods receipt accepted by system. The function of this field is to put check during any Stock Posting. e.g. Total shelf life of product is 24 Months and in material master minimum shelf life is 2 months.

So after 22 months from date of manufacturing system will not allow any stock posting. Implementation of expiry date check at goods receipt can be done via two methods: Entry of manufacturing/expiry date during GR (MIGO) Entry of manufacturing/expiry date during GR (CO11N/COR6N) In this blog post, we will go through the scenario of manufacturing/expiry date during GR (MIGO) Configuration: SPRO-> Batch Management -> SLED -> Set Expiration Date check (OMJ5) 2. Activate SLED check at 101 movement type = 1 (Enter and check manufacturing/expiry date during GR) Illustration: Case 1: Raw material procured from vendor with Minimum and total shelf life maintained in material master a) When minimum shelf life and total shelf life are, maintain in material master. It is mandatory to enter date of production during GRN else below error will be displayed. b) Suppose posting date is on 11-06-2020 and date of production entered is in past for batch as 11-05-2020.

System will display below error and will not allow to do posting. c) Suppose Date of manufacturing of batch entered is 12.05.2020 System will display below error message d) When date of manufacturing is in future, system will display below error Logically, production date cannot be greater than GR date. In order to change this warning message into error, Message number will be changed from warning to Error in OMCQ transaction. Once this change is done and will try to do GR again, system will display below error message Case 2: When minimum and total shelf life is not maintained in material master In this case, system will not ask to enter date of production. Shelf life and date of production can be updated as blank or it can be updated manually during GRN and same will be updated in batch master Case 3: When minimum shelf life is maintained in material master and total shelf life is blank. In this case, system will ask to enter shelf life as minimum shelf life is maintained in material master Suppose SLED entered is in past say 19.05.2020, system will display below error When SLED entered as current date, system will display below error message System will only allow to do posting as per minimum shelf life of 10 days In this case, only expiry date will be updated in batch master. Case 4 : Minimum shelf life is blank and Total shelf life is maintained in material master This case is not allowed, as we have to enter put minimum shelf life

Conclusion: We will be able to understand and analyze the system behavior when minimum shelf life and total shelf life data is maintained in material master. Thanks.... I hope you will like this blog post. Any feedback or improvements in blog post will be highly appreciated so that it will be helpful to community members Regards, Amit Sharma Perishable produce normally has a shelf-life expiration date. The shelf-life date of perishable produce is normally checked at goods receipt. The system supports you in doing this. This shelf-life expiration check is only made when the following requirements are met: The minimum remaining shelf-life that an article must have at goods receipt must be maintained in the article master record or in the purchase order. The system will reject the goods receipt if the minimum remaining shelf-life is not met. The shelf-life expiration date check must be activated in Customizing for Inventory Management for the relevant site and movement type. Fields in the Article Master Record The following fields in the article master record are relevant for the shelf life expiration date check: Minimum remaining shelf life in days Total shelf life in days If you do not enter a total shelf life, you enter the shelf life expiration date when entering goods movements If you enter a total shelf life, you enter the date of manufacture when entering goods movements. The system automatically calculates the shelf life expiration date from the date of manufacture and the total shelf life. Both fields are found on the storage data screen in the article master. Shelf Life Expiration Date Check Articles not subject to a batch-management requirement If the shelf life expiration date check is active, you must enter the shelf life expiration date or the date of production at goods receipt. The system checks at goods receipt whether the remaining shelf-life entered in the purchase order or in the article master record can be complied with. If not, a warning or an error message appears, depending on how your system is configured. When you post a goods receipt, the shelf life expiration date is stored in the article document. Articles subject to a batch-management requirement If the shelf life expiration date check is active, you must enter the shelf life expiration date or the date of production at goods receipt. The system checks at goods receipt whether the remaining shelf-life entered in the purchase order or in the article master record can be complied with. If not, a warning or an error message appears, depending on how your system is configured. When you post a goods receipt, the shelf-life expiration date is stored in the article document and in the batch master record. If a batch already exists, the system also checks whether the shelf-life expiration date entered by the user or determined by the system corresponds with that stored in the batch master record. If it does not, a warning or an error message appears, depending on how your system is configured. If you post a goods receipt in spite of a warning message, the shelf-life expiration date in the batch master record remains valid. If Warehouse Management is active, the shelf-life expiration date is stored in the transfer requirement, transfer order and in the quant.