

August
2021

The Orchid Grower

Orchid Growers' Guild of Madison

www.Orchidgrowersguild.org



IT'S SHOWTIME!

Finally in-person orchid shows are starting again, and the Fall 2021 season is upon us! September and October offer us a chance to show our gorgeous blooms to an in-person audience. Plus we all have a chance to enjoy the fun and learning experiences of setting up or taking down OGG's exhibits. Away shows also are the way we reciprocate other societies' participation in Orchid Quest; needless to say, their lush exhibits help make our show great. Two shows are scheduled for this Fall:

Wisconsin Orchid Society's "Fall in Love with Orchids" takes place Saturday and Sunday September 18-19 (set up Friday September 17) at the Mitchell Park Conservatory, 524 South Layton Blvd., Milwaukee, Wisconsin, 53215. Sue Reed and Lorraine Snyder will be setting our exhibit up on Friday, and Denise Baylis will take it down on Sunday, but they can use more help. So, if you're new to away shows, this is the perfect chance to learn from experienced members, or if you're an

(Continued on page 2)

Meeting Dates

Meetings on Zoom at 1 PM

- September 19
- October 17
- November 21
- December 19

Meetings start at 1:30 pm at Olbrich Gardens unless otherwise noted

Up-Coming Events

- September 18-19, WOS Fall Show
- September 24-26, Chicagoland
- October 10, Fall Orchid Sale, Olbrich
- 2022 February 5 & 6, Orchid Quest

Officers and Committees

President:

Susan Reed (2022)
Greed@chorus.net

Vice President:

Cynthia Wadsworth (2023)
cynthia727672@gmail.com

Secretary:

Lynn West (2023)
LynneWest15@yahoo.com

Treasurer:

Denise Baylis (2022)
jrbaylis@tds.net

Board:

Lisa Linde (2023)
CrazyCatPlantLady@gmail.com

Nancy Thomas (2022)
mikeandnancy@tds.net

(Continued on page 2)

Paphiopedilum Project, August

I have some good news. We have the first report of a bloom on a participant's project Paphiopedilum orchid. Guild member, Josh Carson, originally submitted a picture of the flower for the July Show and Tell activity. Congrats Josh! Here are two photos of his blooming Paph. Phylis Prestia (*Paph. Conco bellatulum* x



Paph. thaianum).

Below, he describes, in his own words, how he grew the orchid.

(Continued on page 2)

INSIDE THIS ISSUE

July Show and Tell	6
June Picnic	4
Lesson in Buying Orchids	5
Orchid Quest Up-Date	5
Paphiopedilum Project	1
Showtime	1
President's Message	3

Carrie Weisman (2023)
cleocat@msn.com

Away Shows:
Nancy Thomas
mikeandnancy@tds.net

Hospitality:
Volunteer

Librarian:
Open

Membership:
Carrie Weisman
carrie.wiesman@dwd.wi.gov

Newsletter:
Denise Baylis
jrbaylis@tds.net

Orchid Quest 2021:
Terri Jozwiak
lodijoz@charter.net

Programs:
Cynthia Wadsworth
cynthia.wadsworth@thermofisher.com

Ribbon Judging:
Open

Web Master:
Richard Jozwiak
OGGweb@charter.net

Liaisons:
AOS: Nancy Thomas
MAOC: Open



Ken Cameron's *Neofinetia falcata* 'Yamahoko'. "Its fragrance is divine!"

(Continued from page 1)

"old hand", come, share your wisdom, and enjoy a day of camaraderie and orchids. The show will follow the Covid-19 guidelines for Milwaukee County: currently face masks, social distancing and one-way foot traffic patterns are required, and the Domes are operating at 75% capacity.

The Eastern Iowa Orchid Society's 'Orchids Are a Scream' returns Saturday and Sunday October 23-24 (set up Friday October 22) at the Elks Lodge, 801 33rd Ave SW. Cedar Rapids, IA. We don't have details on this show yet, but it always has a fun atmosphere with its Halloween theme and cordial hosts. No volunteers have come forward for this one yet, so we need your help!

If you can't get away for either of these shows, be sure to send your blooming orchids to help make our displays spectacular! If you'd each send one orchid per year to a show, we'll be way ahead! To volunteer to help with a show or ask questions, contact your Away Show Chair Nancy Thomas (email: mikeandnancy@tds.net or phone: 608-523-3607).

(Continued from page 1)

"I originally purchased two of this project paph, and have been growing them under slightly different conditions. For the one in bloom, I used a four bulb, four foot T5 fluorescent fixture with standard grow bulbs. The light was on a timer, scheduled on from 8:00 am to 10:00 pm everyday. Water was automated via a hydroponic flood table, flooding and draining three times a week, using phytosan in the water for fungus control and Azomax to try to fight off a mite infestation on a few orchids. I used RapidStart fertilizer and Jack's orchid fertilizer at 1/4 strength, mixed into the water supply."

For all the participants in the the project, I look forward to receiving a photo of your Paph, if you would, when it blooms. Including a short paragraph describing how you grew it would be nice too.



Until next time, happy growing!

— Gary Lensmeyer

PRESIDENT'S MESSAGE

Hello OGG members!

Where has the summer gone! I hope you have been busy fertilizing your orchids and that you have been able to enjoy some summer blooms! Or will have some blooms for the first orchid show of the season at Milwaukee on September 18 and 19!

OGG has been busy this summer with our Show and Tell each month except for June! Orchid Quest has had several planning meetings.

Your input is welcome at Zoom board meetings (the first Tuesday evening of the month) and at the Zoom Orchid Quest meetings (email announcement), and please attend our up-coming September 19 meeting either by Zoom or in person.

The August board meeting will cover strategies for in-person and/or hybrid meetings. We will be purchasing a video camera for Zoom meetings at Olbrich, so being able to physically attend a meeting won't be a necessity in the future. The camera is just one of the new expenses that OGG will have to fund in this new COVID environment. We will also be having more paid speakers so that the winter meetings will mostly be on-line thus avoiding weather attendance issues. The board would greatly appreciate hearing from members about how safe they would feel about an in-person OGG speaker at a meeting. We will also be discussing the budgets for OGG and Orchid Quest for this COVID environment. Olbrich has reinstated past restrictions on food brought into Olbrich, so our meeting treats will be revised, as well as the meeting room layout.

The September newsletter will cover more about the September meeting.

Any concerns, helpful suggestions and offers to help by the members are greatly appreciated by the board.

Stay well!
Sue



Sandy Delamater's *Pholidota chinensis*. "From Hong Kong, 12 flowers, each about one inch."



Sandy Delamater's *Stanhopea saccata*. "One flower, 1 bud. Second blooming."

JUNE PICNIC



Photo by Susan Reed

Cynthia Wadsworth, Carrie Weisman, Lorraine Snyder, Nancy Thomas, Jeff Baylis, Judy Williamson, Liz Barlow, Terri Jozwiak, Liz Wood, Meg McLaughlin, Rich Jozwiak, Lucy & Bob Lasseter and Chuck Acker.

JUNE PICNIC RIBBON JUDGING

All first place

Terri Jozwiak	<i>Stanhopea Assidensis (tigrina x wardii)</i>
Nancy Thomas	<i>Angcst. (Anguloa dubia x Lycaste braedorum)</i>
Meg McLaughlin	<i>Paphiopedilum Saint Swithin</i>
Keith Nelson	<i>Neofinetia falcate 'Kinkounishiki' 金鉞錦</i>
Jeff Baylis	<i>Paphiopedilum concolor 'Perfecto'</i>
Keith Nelson	<i>Macroclinium manabinum</i>
Keith Nelson	<i>Dendrobium Sky Blue</i>
Keith Nelson	<i>Catyclia Middleburg x Encyclia bractescens</i>
Keith Nelson	<i>Nageliella purpurea</i>



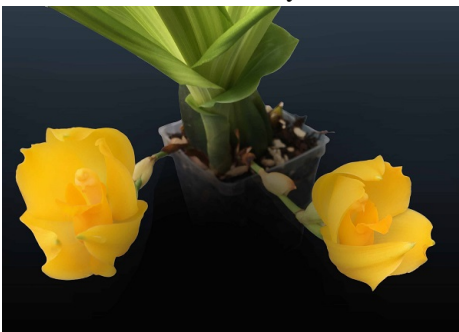
Meg McLaughlin discussing her *Paphiopedilum Saint Swithin*



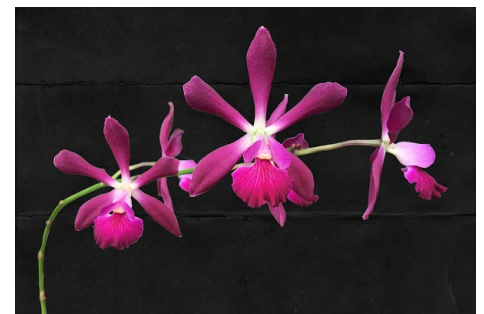
Dendrobium Sky Blue



Terri Jozwiak with her *Stanhopea Assidensis (tigrina x wardii)*



Angcst. (Anguloa dubia x Lycaste braedorum)

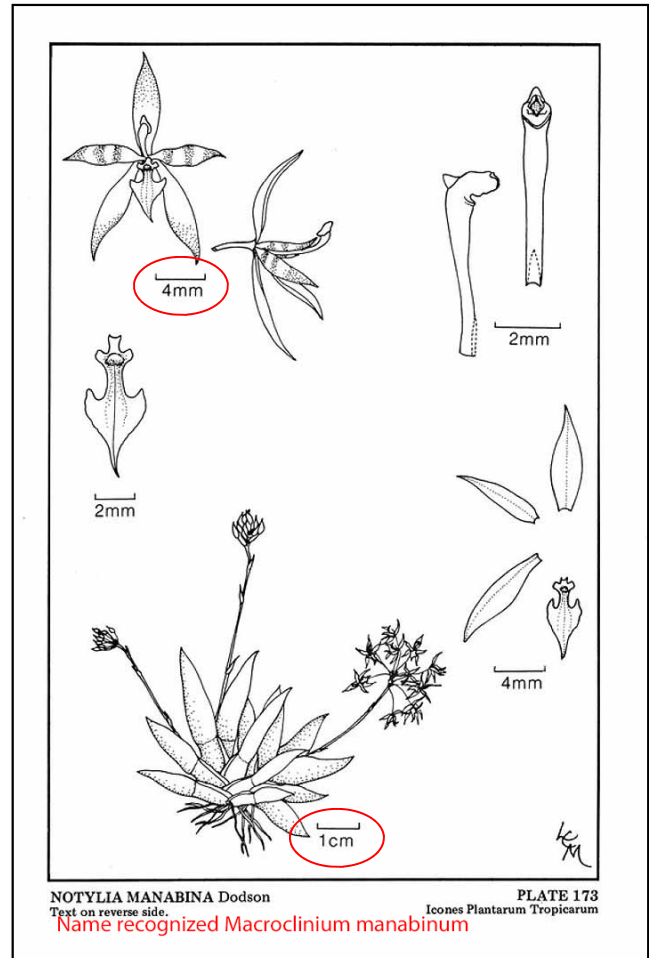


Catyclia Middleburg x Encyclia bractescens

A LESSON IN BUYING ORCHIDS

Late one night I was web surfing and saw a picture of a *Macroclinium manabinum* for sale. It looked very neat and was reasonably priced so I clicked on order. I think I recall it being described elsewhere as a fast growing “twig” orchid growing on small ends of branches. It is blooming now for the second time. The bloom is tiny, about 3/16 of an inch, very hard to see. I took the picture with the penny behind the bloom to show size, although the penny is out of focus. I don’t have a camera equipment of any type that could properly photograph a flower this small. Now that I have it I love it, but I will remember to check the flower size of plants I order in the future.

Keith Nelson



ORCHID QUEST 2022 UP-DATE

Orchid Quest 2022 planning has begun. A Zoom meeting was recently held for those interested. During this meeting some assignments were confirmed:

Co-Chairs

Terri Jozwiak and Cynthia Wadsworth

Coordinators/Liaisons:

Food:	Kathleen Johnson
Speakers:	Cynthia Wadsworth
Publicity:	Cynthia Wadsworth
Vendors:	Lorraine Snyder
Raffle:	Doug Dowling
Silent Auction:	Carrie Weisman and Judy Williamson
Awards:	Nancy Thomas
Donations:	Lisa Linde

July Show and Tell Participants

Jeff Baylis	<i>Coelogyne ovalis</i>
Jeff Baylis	<i>Cymbidium aloifolium</i>
Jeff Baylis	<i>Laelia tenebrosa</i>
Jeff Baylis	<i>Liparis liliifolia</i>
Jeff Baylis	<i>Paphiopedilum concolor</i> 'Yellow Bird' x <i>Paphiopedilum thaianum</i> 'Perfecto'
Joshua Carson	<i>Paphiopedilum</i> Conco-bellatulum x <i>Paphiopedilum thaianum</i>
Ken Cameron	<i>Neofinetia falcata</i> 'Yamahoko'
Lorraine Snyder	<i>Phragmipedium</i> Charlie Hanson (<i>richteri</i> x <i>fischeri</i>)
Lorraine Snyder	<i>Phragmipedium</i> Grande (<i>longifolium</i> 'Woodstream' x <i>caudatum</i> 'Windy Hill')
Nancy Thomas	<i>Beallara</i> Ysabella 'Lunar Eclipse' (<i>Aliceara</i> Winter Wonderland x <i>Oncidium</i> Forever Jubilee)
Nancy Thomas	<i>Bratonia</i> Kauai's Choice (<i>Brassia arcuigera</i> x <i>Bratonia</i> Aztec)
Nancy Thomas	<i>Cattlianthe</i> Fire Island 'Fiery' (Eva x Oro Bay)
Nancy Thomas	<i>Cypripedium parviflorum</i> var. <i>pubescens</i>
Nancy Thomas	<i>Cypripedium reginae</i>
Nancy Thomas	<i>Pleurothallis trichostoma</i>
Sandy Delamater	<i>Ascofinetia</i> Cherry Blossom (<i>Neo falcata</i> (white) x <i>Ascocentrum ampullacea</i>)
Sandy Delamater	<i>Cymbidium pendulum</i> (Now <i>aloifolium</i>)
Sandy Delamater	<i>Dendrochilum hellwigianum</i>
Sandy Delamater	<i>Dendrochilum</i> species
Sandy Delamater	<i>Ornithocephalus powellii</i>
Sandy Delamater	<i>Paphiopedilum delenatii</i> fma. <i>vini</i> (dunkle) x sib ('Purple Angel' x 'Purple Delight')
Sandy Delamater	<i>Pholidota chinensis</i>
Sandy Delamater	<i>Pleurothallis mammillata</i>
Sandy Delamater	<i>Stanhopea saccata</i>
Sandy Delamater	<i>Trichopilia</i> x <i>ramonensis</i> -natural hybrid (<i>suavis</i> x <i>marginata</i>)
Susan Reed	<i>Dendrobium</i> Hibiki (<i>bracteosum</i> x <i>laevifolium</i>)
Susan Reed	<i>Galearis spectabilis</i> [Showy Orchis]
Susan Reed	<i>Paphiopedilum</i> Prince Edward of York 'Charles Edward' FCC/AOS (<i>rothschildianum</i> x <i>sanderianum</i>)
Susan Reed	<i>Phalaenopsis</i> unknown hybrid
Susan Reed	<i>Phalaenopsis violacea</i>
Susan Reed	Slc Katherine Clarkson 'SVO' HCC/AOC x Slc Dandi's Gem 'SVO Best' (now <i>Cattleya</i>)
Terri Jozwiak	<i>Aspasia lunata</i>
Terri Jozwiak	<i>Bulbophyllum makoyanum</i>
Terri Jozwiak	<i>Catasetum</i> (Portagee Star 'Brian Lawson's Sunrise x Susan Fuchs 'Burgundy Chips' FOC/AOS)
Terri Jozwiak	<i>Dendrobium</i> (Aridang x Burana Sundae)



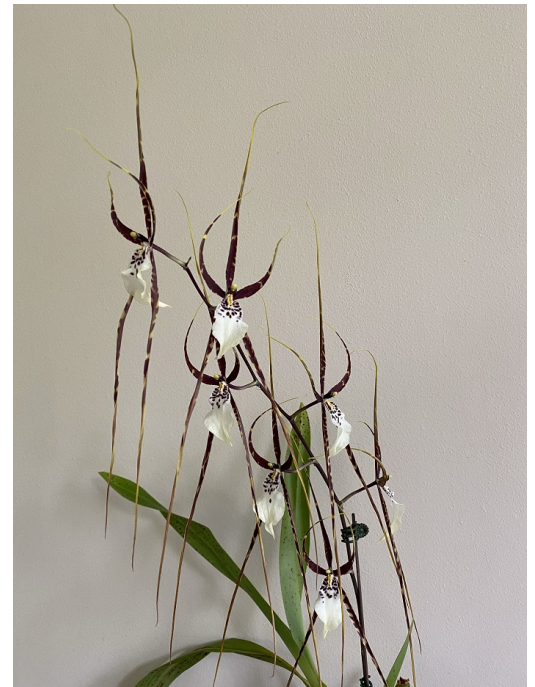
This is the second blooming for Sandy Delamater's *Ascocinetia* Cherry Blossom (*Neo falcata* (white) x *Ascocentrum ampullacea*)



Terri Jozwiak, "My *Aspasia lunata* was blooming for our June meeting but the bloom was tiny and facing away from me so I didn't see it."



Nancy Thomas's *Beallara* Ysabella 'Lunar Eclipse' (*Aliceara* Winter Wonderland x *Oncidium* Forever Jubilee). "*Beallara* is a hybrid of the genera *Brassia*, *Cochlioda*, *Miltonia* and *Odontoglossum*. The flowers are white with lavender when opening, but become darker purple as they age. I've also found cooler temperature deepens the color. Flowers are large, 4 in vertically x 4-5in horizontally, and long-lasting - these flowers started opening in early June and show no sign of fading after 1.5 months."



Nancy Thomas' *Bratonia* Kauai's Choice (*Brassia arcuigera* x *Bratonia* Aztec). = *Brs. arcuigera* (50%) + *Milt. spectabilis* (19%) + *Brs. verrucosa* (13%) + *Milt. candida* (13%).

"These flowers are 13 inches tall, measuring from top to bottom of their "tendrils"."



Terri Jozwiak's *Bulbophyllum makoyanum*.
 "This is one of my favorites. I have several of these on hanging boards but this one has 2 wide-open flowers and 3 buds about to open!!"



Terri Jozwiak's *Catasetum* (Portagee Star 'Brian Lawson's Sunrise x Susan Fuchs 'Burgundy Chips' FOC/AOS)



Susan Reed's Slc Katherine Clarkson 'SVO' HCC/AOC x Slc Dandi's Gem 'SVO Best' (now Cattleya). "These four flowers are long lasting!"



Nancy Thomas's *Cattleya* Fire Island 'Fiery' (Eva x Oro Bay) = *Gur. aurantiaca* (25%) + *C. cinnabarina* (25%) + *C. dowiana* (9%) + *C. warszewiczii* (9%).
 "I won this plant in the OQ Raffle, it was a donation from Goin' to Pot Orchids."

Jeff Baylis's *Coelogyne ovalis* "This plant is on a cedar slab mount by Keith. It sprawls and has tiny roots. Our house has low humidity, so I hang it right under a misting nozzle. It gets mist every 20 minutes daytime. About once or twice/week I dunk it in a bucket of rainwater. I have had it for about 3





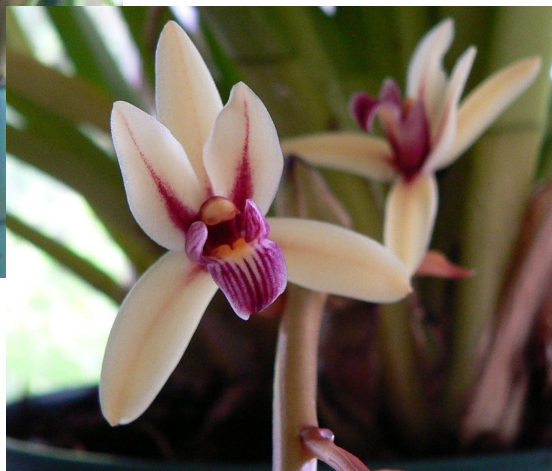
Jeff Baylis', *Cymbidium aloifolium*. "It came from Ackers about 6-8 years ago. I divided it for the first time this year, and this is the first bloom on this division. Before repotting, it would have 4-5 spikes at a time. Liked crowding. The blooms are fairly long lasting. It can bloom unpredictably any time of the year."



Jeff Baylis' *Laelia tenebrosa*. "This is indigenous to Brazil, though virtually extinct in nature. It is used a lot in hybridization. Blooms in summer. I have it where it gets a lot of light; direct light in winter. Blooms are short lived. Blooms every year. Have had plant about 8 yrs. Goes outside in summer, which it loves."



Sandy Delamater *Cymbidium pendulum* (Now *aloifolium*) "I have had this orchid for 13 years without any spiking. This is my first blooming. I bought it as a young plant at Oak Hill. The spike is now 2 1/2 ft. long with 22 flowers."



Sandy Delamater's *Trichopilia x ramonensis* -natural hybrid (*suavis x marginata*). "This is native to Costa Rica. I bought it in Florida seven years ago."



Terri Jozwiak's *Dendrobium* (Aridang x Burana Sundae). "One flower is wide open but the rest of them haven't opened yet."



Susan Reed's *Dendrobium* Hibiki (*bracteosum* x *laevifolium*)



Jeff Baylis's *Liparis liliifolia*. AKA brown widelip orchid, lily-leaved twayblade, large twayblade, and mauve sleekwort. "It blooms in June for us. It's a native on our property. Likes edges."

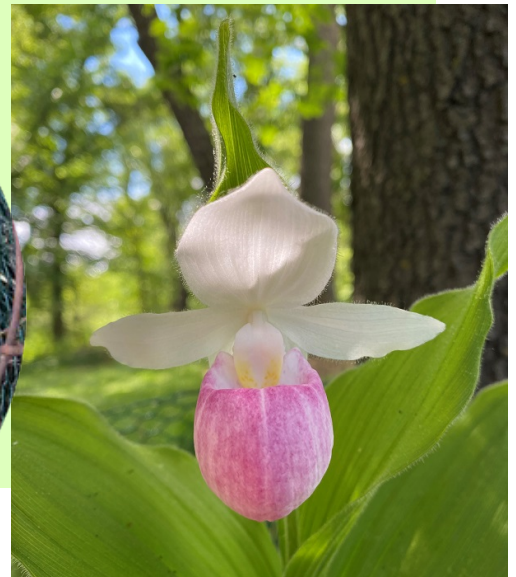
Susan Reed's *Galearis spectabilis* [Showy Orchis]. "This has been coming up for more than 10 years under my Colorado Blue Spruce trees."



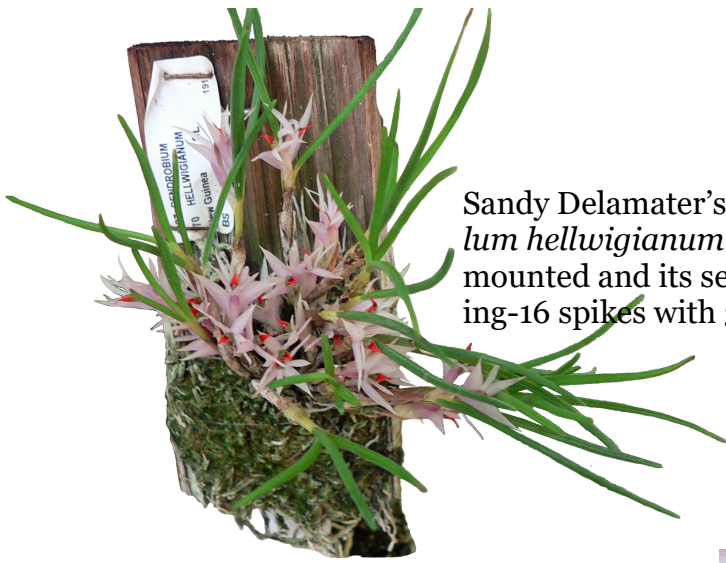
NATIVE ORCHIDS



Nancy Thomas's *Cypripedium parviflorum* var. *pubescens*. "I bought this Yellow Lady slipper at an OGG member auction. It grows in a planter in my front yard. It had 14 flowers this year."



Nancy Thomas's *Cypripedium reginae*. "This Showy Lady's slipper grows in a planter in my front yard. It is from Scott Weber's Bluestem Farms."



Sandy Delamater's *Dendrochilum hellwigianum*. "This is mounted and its second blooming-16 spikes with 32 flowers."



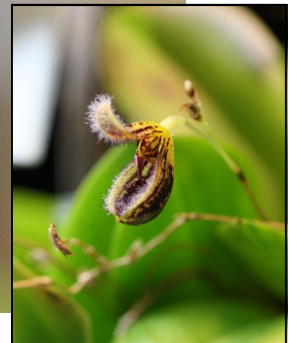
Sandy Delamater's *Dendrochilum* species is from Malaysia. "It is mounted and its second blooming. There are 33 spikes, with too many flowers to count."



Sandy Delamater's *Ornithocephalus powellii*. "It is from Panama, mounted, first blooming."



Sandy Delamater's *Pleurothallis mamillata* "This is its second blooming, many spikes and flowers."



Nancy Thomas' *Pleurothallis trichostoma*. "Hairy Mouthed Pleurothallis". This is a miniature plant grown mounted in sphagnum, kept moist. The "pouch" is about 1/4 inch (6mm) long."

PHALS & PAPHIS



Jeff Baylis' *Paphiopedilum concolor* 'Yellow Bird' x *Paphiopedilum thaianum* 'Perfecto'. "This miniature wasn't blooming when I purchased it from Orchid Inn at OQ 2019. I keep it in front of a south facing window partially shaded by a tree. It sits directly under my mister and gets a blast of mist every 20 minutes. Our misting system only uses filtered rainwater."



Sandy Delamater's *Paphiopedilum delenatii fma. vini* (dunkle) x sib ('Purple Angel' x 'Purple Delight') "Bought from Sam Tsui, Orchid Inn. First blooming, large flower small plant."



Susan Reed's *Paphiopedilum* Prince Edward of York 'Charles Edward' FCC/AOS (*rothschildianum* x *sanderianum*)

Orchid Growers' Guild August 2021 page 12 of 12



Susan Reed *Phalaenopsis* unknown hybrid



Susan Reed's *Phalaenopsis violacea*