



Fauna Department
Kadoorie Farm and Botanic Garden
Lam Kam Road
Tai Po, N.T.
Hong Kong

Phone 24886192
Fax 24831877

Fauna Conservation Department Project Report

Monday, 30th May 2004

Project Area: Conservation
(Species & Habitats);
Wildlife Monitoring

Project title: Moth Survey

Code: FAU206

Coordinator: R.C. Kendrick Ph.D.

Report period: 1994 to March 2004



Fauna Department
Kadoorie Farm and Botanic Garden
Lam Kam Road
Tai Po, N.T.
Hong Kong

Phone 24886192
Fax 24831877

**Summary Moth Survey Report
1994 to March 2004
at
Kadoorie Farm & Botanic Garden
Tai Po, Hong Kong.**

by

R.C. Kendrick Ph.D.

Report No. KFBG-FAU206/1

May 2004

Project Area: Conservation (Species & Habitats);
Wildlife Monitoring

Project title: Moth Survey

Coordinator: Roger Kendrick Ph.D ¹

CODE: FAU 206

Date commenced: February 2001

¹ P/T Senior Conservation Officer,
Fauna Conservation Department,
Kadoorie Farm & Botanic Garden Corporation

Contents

1	ABSTRACT	3
2	INTRODUCTION	4
3	OBJECTIVES	4
4	METHODS	5
4.1	SPECIES RICHNESS & DIVERSITY AT KFBG	5
4.2	SPECIES OF CONSERVATION IMPORTANCE	5
5	RESULTS	6
5.1	SPECIES RICHNESS & DIVERSITY AT KFBG	8
5.2	SPECIES OF CONSERVATION IMPORTANCE	12
6	DISCUSSION	18
7	CONCLUSIONS	19
8	REFERENCES	19
9	APPENDIX	21
9.1	SPECIES LIST	21
9.2	RAW DATA	28

1 ABSTRACT

A brief history of moth recording at Kadoorie Farm & Botanic Garden is presented. Data from light trapping between 1994 and March 2004 is given. KFBG was found to have a high diversity and high species richness of moths. The overall Fisher's α diversity for KFBG was 272. A total of 1,171 species were recorded, of which 20 species meet criteria devised by the International Union for the Conservation of Nature for vulnerable, endangered or critically endangered species. Of the species recorded, 48% (562) are restricted to three or fewer sites in Hong Kong, of which 57 species have only been recorded at KFBG. Sixteen of the species recorded are currently considered endemic to Hong Kong. It is estimated that between 200 and 900 further species await recording by light trapping at KFBG. Work to elucidate the life histories of the species of conservation concern is recommended, thereby allowing a mechanism for their conservation *in situ* to be established.

2 INTRODUCTION

Following Kadoorie Farm and Botanic Garden's (KFBG) change in the late 1980's and early 1990's from being an agricultural aid establishment to being a focus for promoting conservation education, environmental sustainability and the protection of biodiversity in Hong Kong and beyond (KFBG, 2003), various wildlife recording programmes were initiated.

Moth recording at KFBG was first undertaken by John Tennent in the early 1980's, although the only published data is for the hawkmoths (Tennent, 1992). Further recording was undertaken in the 1990's. First, by G. Ades on the short-term tenancy land above Kadoorie Agricultural Research Centre (to order / family level only – see Ades, 1994 and Ades & Dudgeon, 1999). Secondly, by the author in 1994 (Kendrick, 1995) whilst on a six week visit to Hong Kong as part of an undergraduate project. In 1996, The University of Hong Kong's Biodiversity Survey (DEBHKU, 2001) recorded at KFBG.

More regular recording took place in 1999 as part of the author's postgraduate study on the Hong Kong moth fauna (Kendrick, 2002). This work became a KFBG wildlife recording project in 2001 (currently project FAU 206) and is ongoing as part of existing and continuing developments in our on-site fauna-monitoring project (Conservation (species and habitats) Wildlife monitoring program). As part of the recording, a Memorandum of Understanding between KFBG and Mark J. Sterling of Allen & Ovary took effect for 2001. Mr. Sterling recorded microlepidoptera between March 2001 and June 2003 and is now reviewing the material collected for taxonomic assessment and likely publications of new species descriptions. A full list of microlepidoptera recorded at KFBG under this MoU is likely to be several years in preparation.

For the purposes of this work, as the data of J.Tennent is unavailable, the baseline year of 1994 is treated as the first time recording has taken place. It is hoped that at some point in the future, the old data set can be retrieved.

3 OBJECTIVES

The overall project objectives, as listed in the project outline (Kendrick, 2004) are:

Short term (to achieve by 2007)

- to catalogue the moth species occurring naturally at KFBG;
- to evaluate which species are of conservation significance.

Long term (ongoing and continuing beyond 2007)

- to provide data for the assessment of habitat management at KFBG;
- to determine the effects of existing KFBG habitat management upon the moths of conservation significance and the general moth community composition at KFBG;
- to record the ecology and life cycles of moth species of conservation significance at KFBG.

For this report, which covers data recorded prior to the establishment of a formal moth recording scheme, as well as three years data post-establishment, the objectives are as follows:

- to catalogue and evaluate the richness and diversity the moth species occurring naturally at KFBG
- to evaluate which species are of conservation significance

4 METHODS

The primary method used to record moths at Kadoorie Farm & Botanic Gardens was by means of light trapping. Specifically, the design used was a 125W MBF mercury vapour light, operated from either a mains electricity source or a generator, placed on a Robinson trap (Fry & Waring, 1996). The Butterfly Garden was chosen to be the regular monitoring location, with other parts of the Farm recorded as and when equipment and time allowed. When a second trap was operated simultaneously, the type used was a 125W MBF mercury vapour light on either a Robinson or a Skinner trap. The initial recording frequency was monthly, though the logistics of manpower and time available meant that this has been subsequently reduced to around bi-monthly. Species identifications were made by comparison to reference collections and available literature (see Kendrick, 2002 for a full list). Nomenclature follows Kendrick (2004).

Based upon the light trapping data obtained several analyses are carried out:

4.1 *Species Richness & Diversity at KFBG*

Species richness for sites within KFBG and as a whole at KFBG is given for the light trapping data.

An assessment of the likely number of moth species to be recorded at KFBG is made by comparison against data from Kadoorie Agricultural Research Centre and all Hong Kong from 1996-2003, using abundance and species incidence data from Kendrick (2002). Species estimates are based upon canonical log-normal distributions, following Preston (1948, 1962) and May (1975) and also using species estimation methods established by Colwell & Coddington (1994), reviewed by Gray (2000) and used for estimating richness of Cerambycidae beetles by Noguera *et al.* (2002). These utilise the non-parametric species abundance-based coverage estimators Chao₁ (Chao, 1984), as corrected by Chao *et al.* (1993) and Lee & Chao (1994) for consistent overestimation noted by Colwell & Coddington (1994) and Abundance-base Coverage Estimator (ACE) (Chao & Lee, 1992; Chao *et al.*, 1993). The data are analysed for species diversity measures at each site within KFBG and for KFBG as a whole. A full description of these methods is given in Kendrick (2002). Krebs (1978) noted two problems with the log-normal distribution. These are that a canonical log-normal distribution assumes stable equilibrium conditions in a community (i.e. rates of species immigration equal rates of species extinction) and that there is no theoretical justification for the log-normal distribution as a “law” of relative abundance. However, Krebs (1978) also highlighted the similarity of species abundance curves for very different taxa (algae, moths, snakes and birds).

The species richness and diversity of moths at sites within KFBG and for selected sites elsewhere in Hong Kong (for abundance data only) are calculated. Whilst species richness is likely to be related to the number of recording events if the actual number of species is not known, and thus possibly misleading, diversity indices give a better representation of how diverse the moth community at a particular site is, irrespective of recording effort. Three indices are used, each being measures that incorporate the evenness of diversity, the abundance of each species and the number of species. See Gray (2000) for details on these indices and their relative merits.

4.2 *Species of Conservation Importance*

Following the findings of Kendrick (2002) for moth species in Hong Kong and applying International Union for the Conservation of Nature (IUCN) guidelines for red list species (IUCN, 2001), species of conservation importance that occur at KFBG are identified.

Distribution in Hong Kong follows Kendrick (2002) in the use of the terms:

- “restricted” – known from one to three sites,
- “local” – known from four to nine sites
- “widespread” – known from ten or more sites.

The status of each species follows the following scale (based upon the percentage of recording events in Hong Kong, following Walthew, 1997):

1 record – very rare	20 to 49 records – frequent
2 to 4 records – rare	50 to 149 records – common
5 to 9 records – scarce	150 + records – very common
10 to 19 records – uncommon	

5 RESULTS

Table 5.0.1 lists the number and type of moth recording events undertaken and the site locations within the Farm.

location	Butterfly Garden	Conservation Buidling	Insect House	Kwun Yum Shan	Misha's Bungalow	Main Gate	KFBG
sub-site code	KG-BG	KF-Cons	KF-IH	KF-KYS	KF-MB	KF-MG	
light trapping events	32	0	4	10	5	0	51
casual recording events	7	20	2	2	1	3	35

Table 5.0.2 lists the recording dates, locations for light trapping at KFBG and the number of species recorded at each site per recording session. Note the total records column does not represent the total number of species recorded when two or more sites are recorded simultaneously, as there is some overlap of species recorded. Additional records of species have been obtained on a casual basis through daytime observation and by rearing larvae seen on plants in the Farm. The daytime observations are included in the table for the sake of completeness, but not incorporated into the site comparisons.

dates for light trapping data	Butterfly Garden	Insect House	summit of Kwun Yum Shan	Misha's Bungalow	Main Gate	Conservation Buidling	Total records
23-Aug-94	38						38
15-Feb-96	106						106
4-Mar-99	111		172				283
10-Apr-99	207		89				296
12-May-99	213		154				367
26-Jun-99	185		129				314
17-Jul-99	183		116				299
18-Aug-99	194		236				430
5-Oct-99	116		170				286
24-Nov-99	83		184				267
3-Mar-01	123						123
17-Mar-01	114						114
7-Apr-01	170						170
28-Apr-01	264						264

Table 5.0.2. Dates for moth recording at KFBG, with number of species records from each site.							
dates for light trapping data	Butterfly Garden	Insect House	summit of Kwun Yum Shan	Misha's Bungalow	Main Gate	Conservation Building	Total records
12-May-01	217						217
2-Jun-01	213						213
23-Jun-01	241						241
11-Aug-01	118			6			124
25-Aug-01	226						226
15-Sep-01	273						273
6-Oct-01	213						213
25-Oct-01	162						162
15-Jun-02	239	73					312
13-Jul-02	228						228
28-Sep-02	196	27					223
5-Mar-03		147					147
12-Apr-03	223	113	199				535
3-Jun-03			378				378
23-Aug-03				36			36
12-Sep-03	159			86			245
20-Sep-03	63						63
25-Oct-03	152			164			316
22-Nov-03	52			47			99
28-Feb-04	161						161
27-Mar-04	127			131			258
Total no. of records	5370	360	1827	470	0	0	8027
Other data from casual recording							
Date	Butterfly Garden	Insect House	summit of Kwun Yum Shan	Misha's Bungalow	Main Gate	Conservation Building	Total records
24-Oct-94		1					1
12-Feb-01						1	1
12-Apr-01	1						1
19-Apr-01						3	3
15-Jun-01					1		1
17-Jun-01			3		3		6
19-Jun-01						1	1
3-Jul-01						1	1
11-Aug-01						1	1
16-Aug-01						1	1
22-Aug-01						6	6
30-Aug-01						1	1
1-Sep-01					2	1	3
6-Sep-01			2				2
13-Dec-01						1	1
17-Dec-01						1	1
19-Dec-01						1	1
2-Mar-02	1						1
11-Mar-03						1	1
4-Apr-03						1	1
3-Jun-03	3	1					4
18-Jun-03	5						5
24-Jun-03	2						2
15-Jul-03	1						1
4-Aug-03	1						1
18-Nov-03						1	1
25-Feb-04						1	1
17-Mar-04						1	1
23-Mar-04						1	1
Total no. of records	14	2	5	0	6	25	52

5.1 Species Richness & Diversity at KFBG

At least 1,171 species of moth were recorded between August 1994 and March 2004. These species are listed in Appendix 9.1. Table 5.1.1 shows the total number of species recorded in each year of recording and the number of species not previously recorded at KFBG, both in actual numbers and as a percentage of the total number of species recorded in the respective year of recording.

Table 5.1.1. Annual breakdown of total recorded and newly recorded moth species at KFBG.

Year	1994	1996	1999	2001	2002	2003	2004	Total
total number of species recorded	39	105	763	796	495	753	292	1171
new species to KFBG	39	98	641	215	50	114	14	1171
new species as a % of species recorded	100	93	84	27	10	15	5	

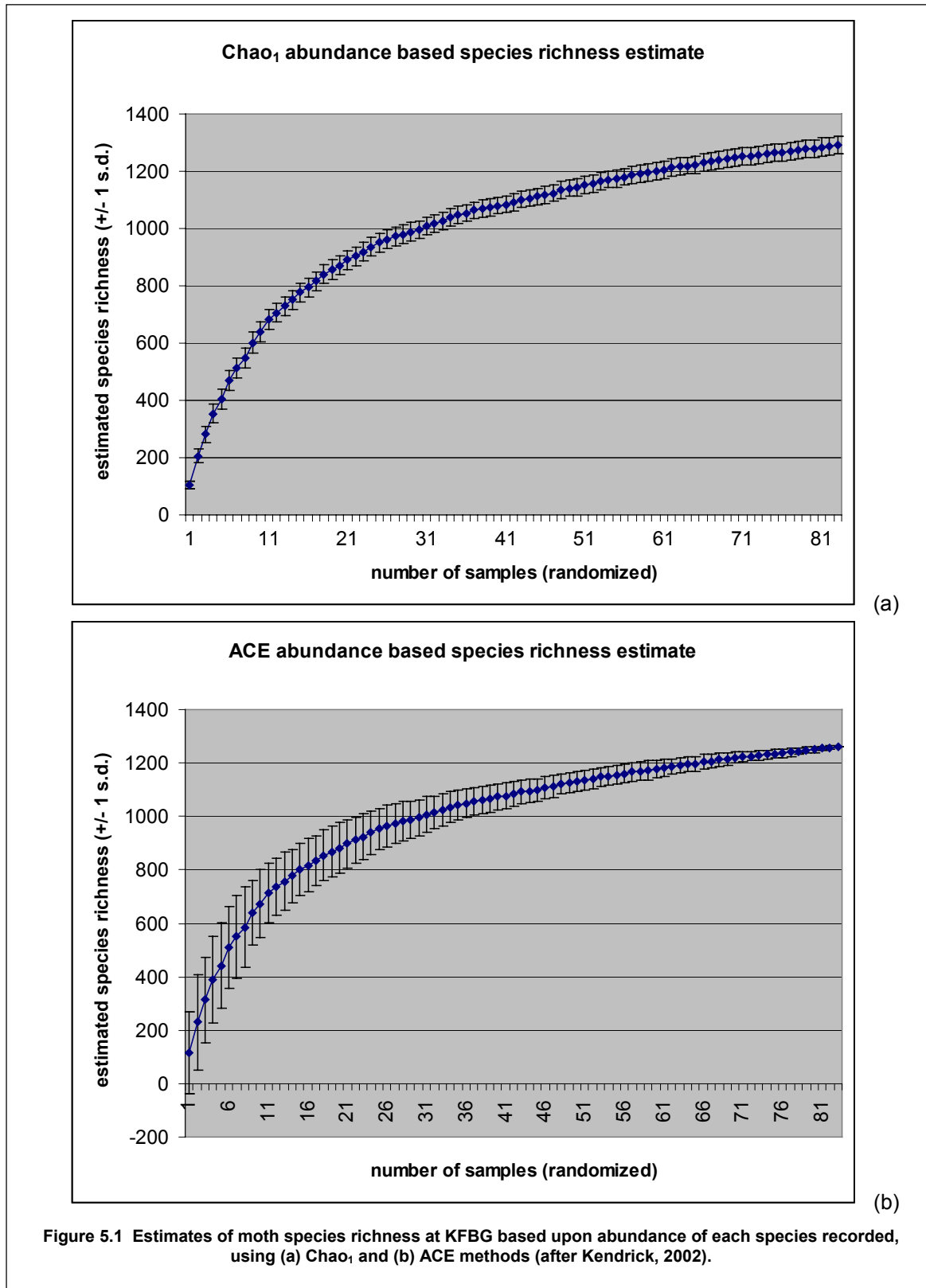
The rate of species accumulation is, as would be expected, slowing to a small percentage of the overall number of species seen on an annual basis. The two light trap recording events that have taken place to date in 2004 have yielded 14 species not previously recorded at KFBG out of the 292 species recorded.

Table 5.1.2 lists the most abundant and the most frequently recorded species at KFBG, with the rank given for the alternative measure given in brackets for reference. Note that this table combines light trapping data with data for casual observations, thus the maximum possible number of records is 86, although as 35 of these events (table 4.1) are of casual observations of six or fewer species, in reality, the effective maximum is 51 records.

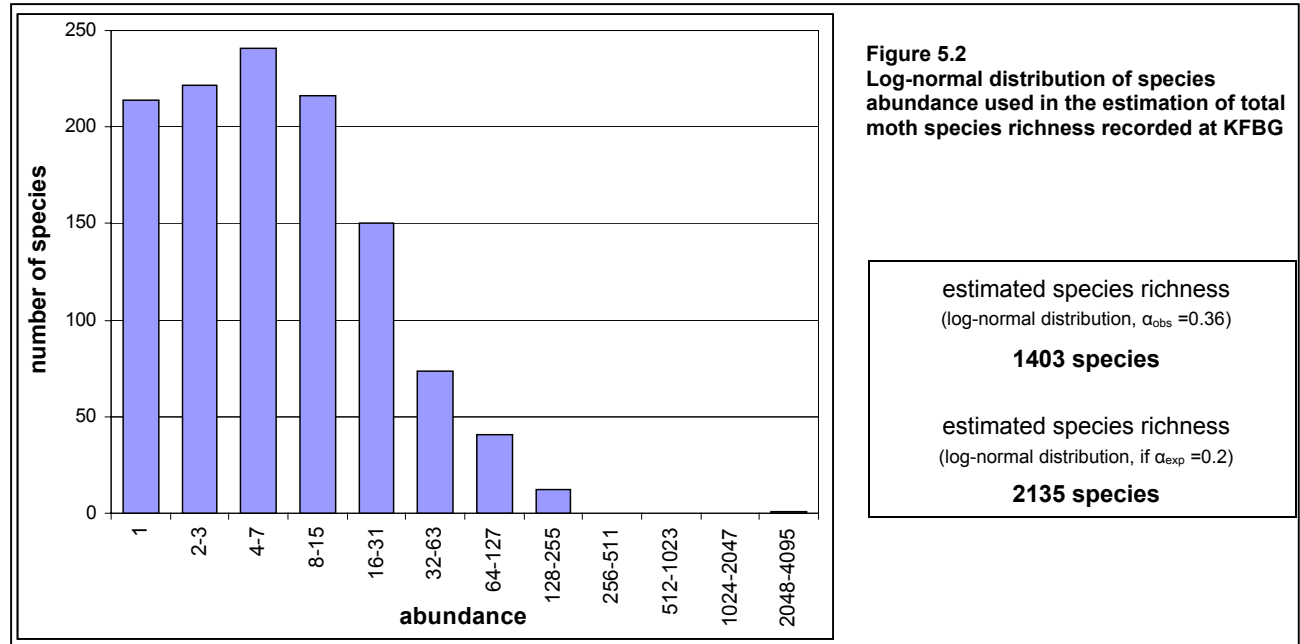
Table 5.1.2. Top 20 moth species recorded at KFBG, ranked by abundance and number of records
(see text above for details)

<i>by abundance rank (rank by no. of records)</i>			<i>by number of records (max 86) (abundance rank)</i>		
rank	species	abundance	rank	species	records
1	(8) <i>Heortia vitessoides</i>	3631	1	(4) <i>Brunia antica</i>	40
2	(22) <i>Guastica semilutea</i>	245	2	(8) <i>Hyposidra talaca</i>	37
3	(103) <i>Adoxophyes privatana</i>	206	3	(11) <i>Condica conducta</i>	36
4	(1) <i>Brunia antica</i>	201		(15) <i>Ceroprepes pluvillella</i>	36
5	(45) <i>Homona coffearia</i>	192	5	(14) <i>Plutodes costatus</i>	35
6	(8) <i>Oxyodes scrobiculata</i>	179		(38) <i>Psilalcis galsworthyi</i>	35
7	(52) <i>Agrotis ipsilon</i>	156	7	(29) <i>Spodoptera litura</i>	34
8	(2) <i>Hyposidra talaca</i>	145	8	(1) <i>Heortia vitessoides</i>	33
9	(78) <i>Elusa antennata</i>	142		(6) <i>Oxyodes scrobiculata</i>	33
10	(15) <i>Ericeia subcinerea</i>	140		(19) <i>Ugia purpurea</i>	33
11	(3) <i>Condica conducta</i>	133		(24) <i>Hypomecis transcissa</i>	33
12	(117) <i>Cnaphalocrocis medinalis</i>	131		(34) <i>Lophophelma calaurops</i>	33
13	(27) <i>Tiracola aureata</i>	130		(41) <i>Kranandra oliveomarginata</i>	33
14	(5) <i>Plutodes costatus</i>	127		(63) <i>Ctenoplusia albostrata</i>	33
15	(3) <i>Ceroprepes pluvillella</i>	126	15	(10) <i>Ericeia subcinerea</i>	32
16	(19) <i>Lyclene alikangiae</i>	119		(26) <i>Cleora alienaria</i>	32
	(117) <i>Pseudargyria interruptella</i>	119		(30) <i>Camptomastix hisbonalis</i>	32
	(442) <i>Limnaecia</i> sp. A	119		(75) <i>Lomographa inamata</i>	32
19	(8) <i>Ugia purpurea</i>	117	19	(15) <i>Lyclene alikangiae</i>	31
20	(22) <i>Traminda aventiaria</i>	115		(31) <i>Schistophleps bipuncta</i>	31
				(65) <i>Nyctemera adversata</i>	31

Ten species are common to both lists. None of these species is listed as potentially threatened according to IUCN criteria (Table 5.2.1). However, *Ugia purpurea* is thought to be endemic to Hong Kong and *Psilalcis galsworthyi* has a globally restricted distribution (Hong Kong S.A.R. and Guangdong Province). It can be seen that some of the most abundant species (i.e. *Cnaphalocrocis medinalis*, *Pseudargyria interruptella* and *Limnaecia* sp. A) are relatively infrequently recorded, with rankings outside the top 10% of species. All the most frequently recorded species are also amongst the most abundant 10% of species at KFBG.



Both the abundance based estimates using Chao₁ and ACE illustrated in Figure 5.1 give a total species count for KFBG in excess of 1300. As both graphs do not reach a level plateau, it is likely that a higher species estimate could be inferred. The Chao₁ method gives a more gradual rate of species increase per sample than that of the ACE method, and inferring a possible plateau of the Chao₁ graph indicates a likely total in excess of 1400 species, whereas the ACE graph may be inferred as reaching a level plateau at a lower number in the region of 1300 species.



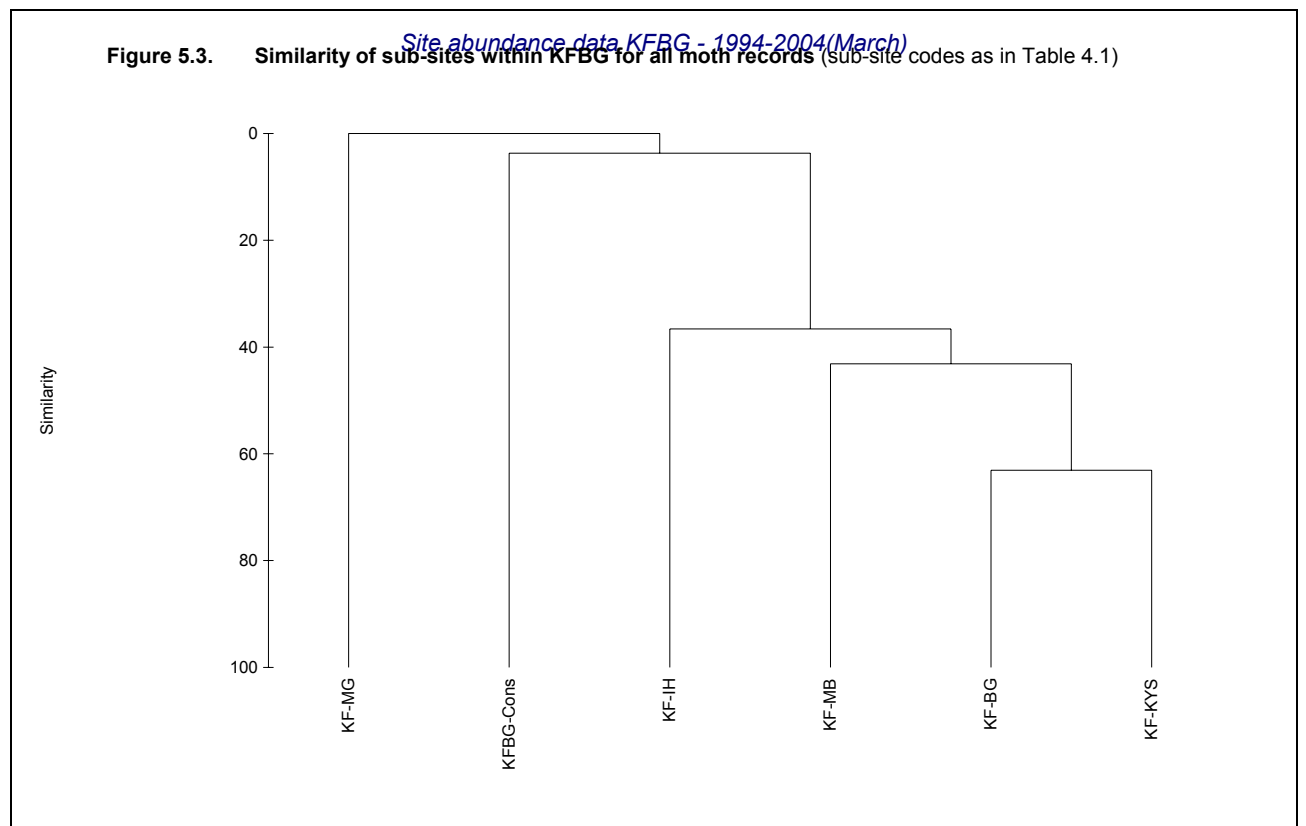
The distribution of species abundance (Figure 5.2) for records where abundance data were taken shows a median for the third class, i.e. those species with between four and seven individuals recorded. The distribution curve is not complete, being skewed to the left by at least four classes. (i.e. implying not all the rare species have been recorded yet). Applying canonical log-normal distribution calculations, following Preston (1948, 1962) and May (1975), for $\alpha_{obs} = 0.36$ gives an estimated species richness of 1403. Krebs (1979) notes that for sufficiently large data sets, i.e. where the log-normal distribution curve is complete, $\alpha \approx 0.20$. Should this value of alpha be applied, the estimated species richness is 2135 species. The lower estimate of 1403 species is in good agreement with the estimate obtained using the Chao₁ method.

The breakdown of species richness and diversity at sites within KFBG and for selected sites elsewhere in Hong Kong (for abundance data only) is shown in Table 5.1.3. Bearing in mind that the total number of species at KFBG is not known, the actual species richness figures are likely to reflect the recording effort at each site. The diversity indices are generally high or very high for all sites that have been recorded by light trapping. Typical wildlife sites in the United Kingdom tend to have a Fisher's diversity index between 50 and 100 and a Shannon index between 3 and 4. The Butterfly Garden's diversity is very high by comparison. The Shannon index for Kwun Yum Shan indicates there is a lower evenness of species diversity, possibly the higher altitude is a factor here.

The similarity of the sites within KFBG is illustrated by Figure 5.3. It should be noted that a strict comparison between sites should be undertaken only when comparing equal recording effort that has been undertaken at each site simultaneously. Thus, this result should be taken as an illustration or guide rather than a statement of actual comparison between sites at KFBG. The figure indicates that the Butterfly Garden and Kwun Yum Shan have the most similar moth communities, with around 65% similarity. The other two sites (Misha's Bungalow and the Insect House) for which light-trapping has taken place are much less similar, being some 40 to 45% similar to each other and the first two sites.

Table 5.1.3. Recording events, species richness and diversity for sites within KFBG and elsewhere in Hong Kong for selected sites with abundance data.

site	light trapping events	casual recording events	species richness S	number of individuals, all species N	Margalev diversity d	Fisher's α diversity	Shannon diversity H' (log e)
Butterfly Garden	32	7	1024	11194	110	274	5.90
Kwun Yum Shan	10	2	754	6842	85	216	4.28
Misha's Bungalow	5	1	334	1128	47	160	5.19
Insect House	4	2	287	801	43	160	5.04
Conservation Buidling	0	20	24	28	7	80	3.12
Main Gate	0	3	6	11	2	5	1.54
KFBG	51	35	1171	19922	118	272	5.55
other sites in Hong Kong, abundance data only (source: Kendrick, 2002)							
Kadoorie Agricultural Research Centre	27		900	9970		240	
Mai Po Education Centre	5		113	488		46	
Tai Tam Tuk Reservoir, Bridge Hill, Tai Tam C.P	3		229	756		111	
Po Leung Kuk Camp, Pak Tam Chung	3		158	325		121	
"Girassol", Tai Po Kau Lo Wai	4		288	755		170	
Hong Kong			~ 2200				



5.2 Species of Conservation Importance

Of the species recorded, 16 are considered endemic to Hong Kong. These species are *Ugia purpurea*, *Pangrapta bicornuta*, *Pangrapta roseinotata*, *Oglasa stygiana*, *Lysimelia lucida*, *Luceria striata*, *Hyposada kadooriensis*, *Egira ambigua*, *Chasmina sinuata*, *Cerynea discontenta*, *Belciana scorpio*, *Athetis hongkongensis* (all Noctuidae), *Sigilliclystis kendricki*, *Maxates brevicaudata*, *Eupithecia sekkongensis* (Geometridae) and *Palpita minuscula* (Crambidae).

Once the global distribution of each species is considered alongside local distribution and status, i.e. applying criteria for the selection of species that are considered to be of conservation significance, 20 species meet IUCN criteria for red list species. These are listed in Table 5.2.1.

<u>Species</u>	<u>Author</u>	<u>HK status</u>	<u>IUCN category & criteria</u>
<i>Egira ambigua</i>	Galsworthy, 1997	endemic, r, rd	CR – B1ab(iii)+C2a(ii)
<i>Chasmina sinuata</i>	Galsworthy, 1997	endemic; s, rd	CR – B1ab(iii)+C2a(ii)
<i>Acidon evae</i>	Lödl, 1998	f, l	EN – B1ab(iii)c(iii)
<i>Acidon paradoxa</i>	Hampson, 1896	f, l	EN – B2ab(iii)
<i>Belciana scorpio</i>	Galsworthy, 1997	endemic; f, l	EN – B2ab(iii)+C2a(i)
<i>Eupithecia sekkongensis</i>	Galsworthy, 1999	endemic; s, rd	EN – B2ab(iii)
<i>Feliniopsis margarita</i>	Galsworthy, 1997	s, l	EN – B1ab(iii)
<i>Microcalicha reelsi</i>	Sato & Galsworthy, 1998	f, rd	EN – B1ab(iii)
<i>Micromelalopha albifrons</i>	Schintlmeister, 1989	s, w	EN – B1ab(iii)
<i>Bertula retracta</i>	Galsworthy, 1997	f, w	VU – B1ab(iii)
<i>Cerynea discontenta</i>	Galsworthy, 1998	endemic; c, w	VU – B2ab(iii)
<i>Hepatica</i> sp. A / nov.		u, w	VU – B1ab(iii)
<i>Hypolamprus</i> sp. nr. <i>emblicalis</i> (Moore, 1888)		f, w	VU – B1ab(iii)
<i>Hyposada kadooriensis</i>	Galsworthy, 1998	endemic; c, l	VU – B2ab(iii)+D2
<i>Luceria striata</i>	Galsworthy, 1997	endemic; c, l	VU – B2ab(iii)
<i>Lysimelia lucida</i>	Galsworthy, 1997	endemic; c, w	VU – B2ab(iii)
<i>Oglasa stygiana</i>	Galsworthy, 1997	endemic; c, w	VU – B2ab(iii)
<i>Palpita minuscula</i>	Inoue, 1996	endemic; u, w	VU – B2ab(iii)
<i>Pangrapta bicornuta</i>	Galsworthy, 1997	endemic; c, l	VU – B2ab(iii)+D2
<i>Pangrapta roseinotata</i>	Galsworthy, 1997	endemic; c, w	VU – B2ab(iii)

The species summaries in Kendrick (2002), updated to reflect subsequent fieldwork, for the above species follow.

Egira ambigua Galsworthy, 1997

Classification: Lepidoptera, Noctuoidea, Noctuidae, Hadeninae.

Global distribution: China (Hong Kong) (Galsworthy, 1997).

Global status: meets IUCN Critically Endangered status under criteria B1ab(iii)+C2a(ii).

H.K. distribution: restricted to two sites, Lam Tsuen Valley and KFBG, probably representing one meta-population.

H.K. status: rare, four records of five specimens in January and February.

K.F.B.G. status: two records, both in February.

Life history: unknown.

Chasmina sinuata Galsworthy, 1997

Classification: Lepidoptera, Noctuoidea, Noctuidae, Hypeninae.

Global distribution: China (Hong Kong) (Galsworthy, 1997).

Global status: meets IUCN Critically Endangered status under criteria B1ab(iii)+C2a(ii).

H.K. distribution: restricted to two sites (Victoria Peak; Kwun Yum Shan).

H.K. status: rare, two records from wooded hilltops; apparently univoltine, flying in July and August.

K.F.B.G. status: one record from the summit of Kwun Yum Shan – August 1999.

Life history: unknown.

Similar species in Hong Kong: *Chasmina judicata* (Walker, 1858) is similar to *Chasmina sinuata*, but smaller and with a thin, pale grey post medial fascia on the f/w. The males of *Chasmina candida* (Walker, 1865) have a distinctly concave f/w costa, but females are almost identical to *C. sinuata* and can only be reliably separated by examining the genitalia.

Acidon evae Lödl, 1998

Classification: Lepidoptera, Noctuoidea, Noctuidae, Hypeninae.

Global distribution: India (Sikkim) (Lödl, 1998). China (Hong Kong):

Global status: meets IUCN Endangered status under criteria B1ab(iii)c(iii).

H.K. distribution: local (central New Territories, Lantau Island).

H.K. status: common (56 records). Recorded in every month, peaks in March, May and July-August, from woodland locations.

K.F.B.G. status: four records from the Butterfly Garden in July and September.

Life history: unknown.

Notes: the species is trimorphic, illustrating sexual dimorphism in both wing shape and pattern; the female occurs in two forms, both with and without a pale medial zone between the sub- and post-medial fascia.

Acidon paradoxa Hampson, 1896

Classification: Lepidoptera, Noctuoidea, Noctuidae, Hypeninae.

Global distribution: Bhutan, China (Hong Kong) (Lödl, 1998, Kendrick, 2001):

Global status: meets IUCN Endangered status under criteria B2ab(iii). This species has, to date, only been recorded from Hong Kong and Bhutan, with the only known current populations in Hong Kong.

H.K. distribution: restricted to two populations, one based on KFBG and Kadoorie Agricultural Research Centre, the other at Tai Po Kau Headland.

H.K. status: uncommon (19 records); first recorded in Hong Kong in November 2000 and since recorded regularly, at low abundance (Kendrick, 2001). Previously only known from the type specimen, recorded from Bhutan.

K.F.B.G. status: 12 records from the Butterfly Garden and one each from the Insect House and the summit of Kwun Yum Shan – February, March, April, June, August, October.

Life history: unknown.

Belciana scorpio Galsworthy, 1997

Classification: Lepidoptera, Noctuoidea, Noctuidae, Calpinae.

Global distribution: China (Hong Kong) (Galsworthy, 1997).

Global status: meets IUCN Endangered status under criteria B2ab(iii)+C2a(i).

H.K. distribution: local (central and north-east New Territories, Sai Kung peninsula).

H.K. status: frequent (33 records); recorded from late March until September; voltinism undetermined, peaking in April.

K.F.B.G. status: two records from the Butterfly Garden and one from the summit of Kwun Yum Shan – June, July and August.

Life history: unknown.

Eupithecia sekkongensis Galsworthy, 1999

Classification: Lepidoptera, Geometroidea, Geometridae, Larentiinae, Eupitheciini.

Global distribution: China (Hong Kong) (Galsworthy, 1999).

Global status: *Eupithecia sekkongensis* is known only from this single type location, where the population is small; meets IUCN Endangered status under criteria B2ab(iii).

H.K. distribution: restricted (KARC, KFBG).

H.K. status: scarce (7 records); univoltine, flying from late December to late February in sheltered woodland areas at 200 - 350m. a.s.l.

K.F.B.G. status: one record of three individuals from the Butterfly Garden – February 2004.

Life history: unknown.

Feliniopsis margarita Galsworthy, 1997

Classification: Lepidoptera, Noctuoidea, Noctuidae, Hadeninae.

Global distribution: China (Hong Kong, possibly central China also) (Galsworthy, 1997).

Global status: meets IUCN Endangered status under criteria B1ab(iii).

H.K. distribution: local, known from three localities (Victoria Peak, KFBG, and Tai Long on the Sai Kung peninsula);

H.K. status: scarce, known from just eight records; probably univoltine (mid-March to late April).

K.F.B.G. status: three records from the Butterfly Garden – April.

Life history: unknown.

Similar species in Hong Kong: similar to *Apamea sodalis* (Butler, 1878) which is also recorded in March and April, but the presence of white in the reniform stigma in *Feliniopsis margarita* is diagnostic.

Microcalicha relsi Sato & Galsworthy, 1998

Classification: Lepidoptera, Geometroidea, Geometridae, Ennominae, Boarmiini.

Global distribution: China (Hong Kong) (Sato & Galsworthy, 1998).

Global status: meets IUCN Endangered status under criteria B1ab(iii).

H.K. distribution: restricted (KFBG, KARC, Lead Mine Pass).

H.K. status: frequent (21 records); occurring in tall shrubland and woodland between 200 and 400 m a.s.l.; trivoltine, recorded in mid-May through early June, late July through August and in November.

K.F.B.G. status: three records from the Butterfly Garden – June, August, November.

Life history: unknown.

Micromelalopha albifrons Schintlmeister, 1989

Classification: Lepidoptera, Noctuoidea, Notodontidae, Pygaerinae.

Global distribution: China (Guangdong, Hong Kong) (Schintlmeister, [1991], 1992; Kendrick, 2002).

Global status: meets IUCN Endangered status under criteria B1ab(iii).

H.K. distribution: widespread.

H.K. status: scarce (eight post - 1995 records, March to May, September, October).

K.F.B.G. status: one record from the Butterfly Garden – June.

Life history: unknown.

Bertula retracta Galsworthy, 1997

Classification: Lepidoptera, Noctuoidea, Noctuidae, Herminiinae.

Global distribution: China (Hong Kong, Sichuan) (Galsworthy, 1997).

Global status: meets IUCN Vulnerable status under criteria B1ab(iii).

H.K. distribution: widespread.

H.K. status: uncommon (19 records). Flies from March to early June, August, October and December / January, although it is quite possible that this species (in common with many members of Herminiinae and Hypeninae) may overwinter as an adult. Thus *B. retracta* is probably bivoltine, with a prolonged dry-season emergence.

K.F.B.G. status: one record from the Butterfly Garden – May.

Life history: unknown.

Notes: Galsworthy (1997), following Hampson (1893), placed this species in Hypeninae; however, following Poole (1989), *Bertula* is placed in Herminiinae.

Cerynea discontenta Galsworthy, 1998

Classification: Lepidoptera, Noctuoidea, Noctuidae, Acontiinae.

Global distribution: China (Hong Kong) (Galsworthy, 1998).

Global status: meets IUCN Vulnerable status under criteria B1ab(iii).

H.K. distribution: widespread.

H.K. status: frequent (39 records); probably trivoltine, with a small emergence from late March to mid-May, then again from late June to August and late September to November.

K.F.B.G. status: nine records from the Butterfly Garden, Insect House and summit of Kwun Yum Shan.

Life history: unknown.

Similar species in Hong Kong: *Cerynea contentaria* (Walker, 1861) is similar to *C. discontenta*, though usually redder in ground colour and lacking the white medial stripe on the hindwing. The peak flight times also differ, *C. contentaria* has less well defined abundance peaks that generally lag behind *C. discontenta*, although both species are common in October.

Hepatica sp. A / nov.

Classification: Lepidoptera, Noctuoidea, Noctuidae, Calpinae.

Global distribution: unknown.

Global status: meets IUCN Vulnerable status under criteria B1ab(iii).

H.K. distribution: widespread.

H.K. status: uncommon (15 records). All records are from the wet season (April – September), except one at the end of December. This species is probably undescribed.

K.F.B.G. status: one record from the Butterfly Garden – August.

Life history: unknown.

Hypolamprus sp. nr. *emblicalis* (Moore, 1888)

Classification: Lepidoptera, Thyridoidea, Thyrididae, Siculodinae.

Global distribution: unknown.

Global status: meets IUCN Vulnerable status under criteria B1ab(iii).

H.K. distribution: widespread.

H.K. status: frequent (24 records) in woodland; recorded from May to early October, with half the records from July.

K.F.B.G. status: one record from the Butterfly Garden in August and one from the summit of Kwun Yum Shan in June.

Life history: unknown.

Notes: see Li (1996) for a discussion on the taxonomy of this undescribed species.

Hyposada kadooriensis Galsworthy, 1998

Classification: Lepidoptera, Noctuoidea, Noctuidae, Acontiinae.

Global distribution: China (Hong Kong) (Galsworthy, 1998).

Global status: meets IUCN Vulnerable status under criteria B2ab(iii)+D2.

H.K. distribution: widespread.

H.K. status: locally common (34 records); recorded in all months, though most records occur from July to November; number of generations unresolved.

K.F.B.G. status: one record from the Butterfly Garden and one from the summit of Kwun Yum Shan in May.

Life history: unknown.

Similar species in Hong Kong: similar to *Parasada carnos*a (Hampson, 1893) and *H. hirashimai* Sugi, 1982. *Parasada carnos*a has broader wings than the two *Hyposada* species and is redder, with a prominent maroon-brown medial fascia traversing both fore and hind wings; *Hyposada hirashimai* has a more mottled appearance than *H. kadooriensis* and is slightly smaller.

Luceria striata Galsworthy, 1997

Classification: Lepidoptera, Noctuoidea, Noctuidae, Strepsimaninae.

Global distribution: China (Hong Kong) (Galsworthy, 1997).

Global status: meets IUCN Vulnerable status under criteria B2ab(iii).

H.K. distribution: widespread.

H.K. status: frequent (27 records), on the wing from June to October and also single records in January and April.

K.F.B.G. status: three records from the Butterfly Garden (August, September, October) and one from Misha's Bungalow in October.

Life history: unknown.

Lysimelia lucida Galsworthy, 1997

Classification: Lepidoptera, Noctuoidea, Noctuidae, Hypeninae.

Global distribution: China (Hong Kong) (Galsworthy, 1997).

Global status: meets IUCN Vulnerable status under criteria B1ab(iii).

H.K. distribution: widespread.

H.K. status: common (85 records), mostly from woodland sites. Multivoltine, recorded in all months except January.

K.F.B.G. status: 16 records – a common species.

Life history: unknown.

Similar species in Hong Kong: there is considerably less shadowing to the f/w sub-terminal fascia and the f/w reniform stigma is much more pronounced than in *Lysimelia alstoni* Holloway, 1979.

Oglastra stygiana Galsworthy, 1997

Classification: Lepidoptera, Noctuoidea, Noctuidae, Calpinae.

Global distribution: China (Hong Kong) (Galsworthy, 1997).

Global status: meets IUCN Vulnerable status under criteria B1ab(iii).

H.K. distribution: widespread.

H.K. status: frequent (47 records). The species occurs from late March through to the end of October.

K.F.B.G. status: six records from the Butterfly Garden (April, June, July, September) and three from the summit of Kwun Yum Shan (June, August).

Life history: unknown.

Notes: the type locality is Beaufort Island.

Palpita minuscula Inoue, 1996

Classification: Lepidoptera, Pyraloidea, Crambidae, Spilomelinae.

Global distribution: China (Hong Kong) (Inoue, 1996).

Global status: meets IUCN Vulnerable status under criteria B2ab(iii).

H.K. distribution: widespread.

H.K. status: uncommon (11 records) in woodland and agricultural land from February through April and August to early November.

K.F.B.G. status: one record from the Insect House in March and one from the summit of Kwun Yum Shan in April.

Life history: unknown.

Similar species in Hong Kong: *Palpita fraterna* Moore, 1888 distinguished from *Palpita minuscula* by the dark f/w apical patch

Pangrapta bicornuta Galsworthy, 1997

Classification: Lepidoptera, Noctuoidea, Noctuidae, Calpinae.

Global distribution: China (Hong Kong) (Galsworthy, 1997).

Global status: meets IUCN Vulnerable status under criteria B2ab(iii)+D2.

H.K. distribution: local (central & north-east New Territories, Sai Kung peninsula).

H.K. status: common (91 records); restricted to native woodland and tall shrubland. Multivoltine, recorded in all months, peaking in mid-February, late March to early April, late June and late November, number of generations undetermined.

K.F.B.G. status: common; 13 records from the Butterfly Garden and two from the summit of Kwun Yum Shan in April and June.

Life history: unknown.

Notes: the type location is given by Galsworthy (1997) as "Lam Tsuen Valley", the actual locality being KFBG.

Pangrapta roseinotata Galsworthy, 1997

Classification: Lepidoptera, Noctuoidea, Noctuidae, Calpinae.

Global distribution: China (Hong Kong) (Galsworthy, 1997).

Global status: meets IUCN Vulnerable status under criteria B2ab(iii).

H.K. distribution: widespread in the New Territories.

H.K. status: common (97 records). Multivoltine, recorded from February through to October, peaks occurring in late March, late June, late July / August and early October.

K.F.B.G. status: common; 16 records from the Butterfly Garden and one from the summit of Kwun Yum Shan in June.

Life history: unknown.

The Hong Kong distribution and status of all species recorded at KFBG is listed with the full species list in Appendix 9.1. The number of species occurring at KFBG in each distribution and status category is shown in Table 5.2.2.

Table 5.2.2. The Hong Kong distribution and status of moth species found at KFBG

Hong Kong distribution	no. of spp.	Hong Kong status	no. of spp.
restricted	311	very rare	17
local	236	rare	151
widespread	616	scarce	174
		uncommon	220
		frequent	279
		common	301
		very common	21

Of the 57 species on the Hong Kong list that are only found at KFBG, 17 species have only been recorded once. A further 254 species are found at only one or two other locations in Hong Kong. There are 562 species which are considered uncommon, or rarer, that occur at KFBG, a quarter of the Hong Kong species list.

6 DISCUSSION

The results of the light trapping and casual recording that have been undertaken at Kadoorie Farm show that the moth communities present are highly diverse and of international importance. There is also a sizeable difference between moth communities at sub-sites within the Farm. This illustrates the different habitat types and the altitudinal gradient that occur.

Of the commonest and regularly recorded species that occur at KFBG (listed in Table 5.1.2), within Hong Kong *Guastica semilutea*, *Plutodes costatus*, *Lomographa inamata* and *Ceroprepes pluvillella* are forest species indicators and *Ugia purpurea* is primarily found in woodland, including *feng shui* woodlands (Kendrick, 2002). The remaining species are not associated with one specific habitat type in Hong Kong, although *Adoxophyes privatana* is likely to be associated with tea plantations and in Borneo *Agrotis ipsilon*, *Spodoptera litura* and *Tiracola aureata* are associated with open habitats (Holloway, 1989). Moth species of the Lithosiinae within the Arctiidae feed on the algal components of lichen. These species are considered indicators of unpolluted environments (Holloway, 1984). Three such species are amongst the commonest species at KFBG, being *Lyclene alkangiae*, *Schistophleps bipuncta* and *Brunia antica*, indicating a reasonably healthy environment in general. Holloway (1993[4], 1996) and Kitching *et al.* (1993) consider the presence of high species numbers of ennomine and geometrine Geometridae as indicators of good or undisturbed woodland or forest. Seven of the top twenty most frequently recorded species belong to these two subfamilies of the Geometridae, and 113 species of ennomine and geometrine Geometridae have been recorded in total, representing 73% of the species from these two subfamilies known from Hong Kong.

The high number of species of conservation concern (20 meeting IUCN red list criteria for vulnerable, endangered or critically endangered categories) and the high proportion of the species recorded at KFBG (48%, or 562 species) which have a restricted distribution within Hong Kong indicate that KFBG is a site of both international and local importance for moth species.

When compared to nature reserves in the United Kingdom, specifically those belonging to the Royal Society for the Protection of Birds (RSPB) and Butterfly Conservation (BC), the amount of recording undertaken to date at KFBG is minimal. The reserves of these organisations are all monitored on a weekly basis (Cadbury, 2002). Consequently, the figure of nearly 1,200 recorded species is likely to be well short of the actual number of species resident at KFBG. The estimation methods give values between 1,300 and 1,400 species, with upto 2,000 species a possibility when the correct estimation factors are accounted for using the log-normal distribution curve.

The survey work carried out so far still covers only a limited area of the Farm. Many other habitats remain to be recorded within the next three years, specifically the agricultural terraces on the Lower Farm, the citrus plantations, the shrub and grassland in the upper reaches of the Farm and the stream gully woodland. It is anticipated that further recording will result in more species being found at KFBG. Further light trapping will enable continued monitoring of the abundance of each species of conservation concern and further recording in different areas of the Farm should help identify the most important areas for moths. With so little known about the ecology of the species of conservation concern, it would be useful to investigate the life histories of these species, by searching for and rearing out larva. This would be time consuming and labour intensive. Thus, careful thought should be given as to the importance of the work within the context of the KFBG mission before any major investment in resources is made to investigate these species life histories for the purpose of species conservation.

7 CONCLUSIONS

Kadoorie Farm & Botanic Garden has a number of highly diverse moth communities represented due to the variation of habitats and altitude within the Farm grounds.

The overall richness and diversity of species is one of the highest yet found in Hong Kong. At least 1,171 species occur, including 57 found nowhere else in Hong Kong and 20 species that meet IUCN red list criteria for globally vulnerable, endangered or critically endangered species, making KFBG a place of conservation significance for moths in Hong Kong, the South China region and globally.

The overall number of species found by light trapping is yet to be reached. Of the 1171 species recorded so far, most have been recorded by this method and it is likely that at least another 200 species, possibly as many as 900 species, should be found this way.

No significant effort to record diurnal or crepuscular moth species has taken place. Similarly, little attention has been given to recording the life histories of moth species at KFBG.

Efforts to investigate the autecology of the species of conservation concern should be made in order to better understand the survival requirements of these species and allow *in-situ* and / or *ex-situ* conservation measures to be implemented if necessary.

Current management practices permitting non-intervention of the areas designated as native woodland should be maintained in order to give the large number of species that utilise this habitat type the opportunity to thrive in Hong Kong.

8 REFERENCES

- Cadbury, J.**, 2002. Royal Society for the Protection of Birds: Moths at RSPB nature reserves, 2001. *Lepidoptera Conservation Bulletin* **3**: 4-5.
- Chao, A.**, 1984. Non-parametric estimation of the number of classes in a population. *Scandinavian Journal of Statistics* **11**: 265-270.
- Chao, A. & Lee, S.M.**, 1992. Estimating the number of classes via sample coverage. *Journal of the American Statistical Association* **87**: 210-217.
- Chao, A., Ma, M.C. & Yang, M.C.K.**, 1993. Stopping rules and estimation for recapture debugging with unequal failure rates. *Biometrika* **80**: 193-201.
- Colwell, R.K. & Coddington, J.A.**, 1994. Estimating terrestrial biodiversity through extrapolation. In Hawksworth, D.L. (ed.), *Biodiversity, Measurement and estimation*. pp.101-118, Chapman & Hall, London.
- Department of Ecology & Biodiversity, The University of Hong Kong**, 2001. *Biodiversity Survey, version 3*. (CD-ROM). Department of Ecology & Biodiversity, The University of Hong Kong.
- Fry, R. & Waring, P.**, 1996. A guide to moth traps and their use. *The Amateur Entomologist* **24**. iv + 60 pp.
- Galsworthy, A.C.**, 1997. New and revised species of macrolepidoptera from Hong Kong. *Memoirs of the Hong Kong Natural History Society* **21**: 127-151.
- Galsworthy, A.C.**, 1998. Two new species of acontiines from Hong Kong (Lepidoptera, Noctuidae, Acontiinae). *Tyô to Ga* **49**: 30-32.
- Galsworthy, A.C.**, 1999. New and revised eupitheciini species (Geometridae, Larentiinae) from Hong Kong and South East Asia. *Tyô to Ga* **50**: 223-234.
- Gray, J.S.**, 2000. The measurement of marine species diversity, with an application to the benthic fauna of the Norwegian continental shelf. *Journal of Experimental Marine Biology and Ecology* **250**: 23-49.
- Hampson, G.F.**, 1893. *Fauna of British India, including Ceylon and Burma: Moths* **2**. Taylor and Francis, London.

- Holloway, J.D.**, 1984. The larger moths of Gunung Mulu National Park; a preliminary assessment of their distribution, ecology and potential as environmental indicators. In Jermy A.C. & Kavanagh K.P. (eds.). *Gunung Mulu National Park, Sarawak, Part II*. pp. 149-190. *Sarawak Museum Journal* **30** Special Issue 2.
- Holloway, J.D.**, 1989. The Moths of Borneo: part 12; Noctuidae: Noctuinae, Heliethinae, Hadeninae, Acronictinae, Amphipyridae, Agaristinae. *Malayan Nature Journal* **43**: 57-226.
- Holloway, J.D.**, 1993 [1994]. The Moths of Borneo: part 11; family Geometridae: subfamily Ennominae. *Malayan Nature Journal* **47**: 1-309.
- Holloway, J.D.**, 1996. The Moths of Borneo: part 9; family Geometridae: subfamilies Oenochrominae, Desmobarthinae, Geometrinae. *Malayan Nature Journal* **49**: 147-326.
- Inoue, H.**, 1996. Revision of the genus *Palpita* Hübner (Crambidae, Pyraustinae) from the Eastern Palaearctic, Oriental and Australian Regions. Part 1: Group A (*Annulifer* Group). *Tinea* **15**: 12-46.
- IUCN, 2001**. *IUCN Red List Criteria version 3.1*. Prepared by the IUCN Species Survival Commission. IUCN, Gland, Switzerland.
- Kadoorie Farm & Botanic Garden, 2003**. *Annual Report 2002/03*. KFBG, Hong Kong. 24 pp.
- Kendrick, R.C.**, 1995. *A Short Survey of the Moths (Lepidoptera) of Hong Kong - Species, Habitat Preferences and Implications for Habitat Management*. B.Sc. degree project (Otley College / University of East Anglia) and unpublished report to Agriculture & Fisheries Dept., Hong Kong.
- Kendrick, R.C.**, 2001. Additional Noctuidae (Lepidoptera) to the Hong Kong List. *Porcupine!* **23**: 4.
- Kendrick, R.C.**, 2002. *Moths (Insecta: Lepidoptera) of Hong Kong*. Unpublished Ph.D. thesis, The University of Hong Kong. xvi + 660 pp.
- Kendrick, R.C.**, 2004. Checklist of Hong Kong Moths. In Ades, G.W.J. & Kendrick, R.C. (eds.), *Hong Kong Fauna: A Checklist of Selected Taxa*. pp 12-52. Kadoorie Farm & Botanic Garden, Hong Kong.
- Kitching, R.L., Bergleson, J.M., Lowman, M.D., McIntyre, S. & Carruthers, G.**, 1993. The biodiversity of arthropods from Australian rainforest canopies: general introduction, methods, sites and ordinal results. *Australian Journal of Ecology* **18**: 181-191
- Krebs, C.J.**, 1978. *Ecology: The Experimental Analysis of Distribution and Abundance* (2nd edition). Harper & Row, New York. 678 pp.
- Lee, S.M. & Chao, A.**, 1994. Estimating population size via sample coverage for closed capture-recapture models. *Biometrics* **50**: 88-97.
- Li, K.H.-K.**, 1996. Ecological notes on Hong Kong Thyrididae (Lepidoptera) including the immature stages of eight species. *Tyô to Ga* **47**: 125-143.
- Lödl, M.**, 1998. Revision der Gattung *Acidon* Hampson, 1896 (Lepidoptera: Noctuidae: Hypeninae), *Quadrifina* **1**: 25-62.
- May, R.M.**, 1975. Patterns of species abundance and diversity. In Cody, M.L. & Diamond, J.M. *Ecology & Evolution of Communities*. pp.81-120. Harvard University Press (Belknap Press), Cambridge, Massachusetts, U.S.A.
- Noguera, F.A., Zaragoza-Caballero, S., Chemsak, J.A., Rodríguez-Palafox, A., Ramírez, E., González-Soriano, E. & Ayala, R.**, 2002. Diversity of the family Cerambycidae (Coleoptera) of the tropical dry forest of Mexico, I. Sierra de Huautla, Morelos. *Annals of the Entomological Society of America* **95**: 617-627.
- Poole, R.W.**, 1989. *Lepidoptorum Catalogus* (New Series). Fascicle 118: Noctuidae. E.J.Brill, Leiden.
- Preston, F.W.**, 1948. The commonness and rarity of species. *Ecology* **29**: 254-283.
- Preston, F.W.**, 1962. The canonical distribution of commonness and rarity. *Ecology* **43**: 185-215, 410-432.
- Sato, R. & Galsworthy, A.C.**, 1998. Description of a new species of the genus *Microcalicha* Sato (Geometridae) from Hong Kong. *Tinea* **15**: 240-242.
- Schintlmeister, A.**, 1991 [1992]. Die Zahnspinner Chinas (Lepidoptera: Notodontidae). *Nachrichten des Entomologischen Vereins Apollo*, Frankfurt. **Suppl. 11**: 1-343.
- Tennent, W.J.**, 1992. The Hawk Moths (Lep.: Sphingidae) of Hong Kong and Southeast China. *The Entomologist's Record & Journal of Variation* **104**: 88-112.
- Walthew, G.**, 1997. The status and flight periods of Hong Kong butterflies. *Porcupine!* **16**: 34-37.

9 APPENDIX

9.1 Species List

FAMILY	HK status & distribution	CALLIDULIDAE	
<i>Genus species</i> Author		<i>Tetragonos catamitus</i> Geyer, 1832	f, w
ADELIDAE		CARPOSINIDAE	
Adelidae genus & sp. A	vr, rd	<i>Alexotyta</i> sp. A nr. <i>caradjai</i> Diakonoff, 1989	dd (c, w)
ALUCITIDAE		CHOREUTIDAE	
<i>Alucita</i> sp. C	vr, rd	<i>Choreutis orthogona</i> (Meyrick, 1886)	s, rd
<i>Alucita spilodesma</i> (Meyrick, 1907)	u, l	<i>Choreutis</i> sp. F	dd (r, rd)
		<i>Choreutis</i> sp. G	dd (r, rd?)
ARCTIIDAE		COSMOPTERIGIDAE	
<i>Adites limbata</i> (Wileman, 1911)	u, rd	" <i>Harpagidia</i> " <i>amplexa</i> Meyrick, 1925	f, rd
<i>Aemene mokanshanensis</i> (Reich, 1937)	s, rd	<i>Ascalenia</i> sp. nr. <i>thoracista</i> Meyrick	c, w
<i>Aemene</i> sp. B	r, rd	<i>Cosmopterix aculeata</i> Meyrick, 1909	f, w
<i>Aemene</i> sp. nr. <i>nigra</i>	s, rd	<i>Cosmopterix hamifera</i> Meyrick, 1909	dd (r, rd)
<i>Aemene taprobanis</i> Walker, 1854	s, w	<i>Cosmopterix</i> sp. nr. <i>basilisca</i> Meyrick, 1909	c, w
<i>Amerila astrea</i> (Drury, 1773)	s, rd	<i>Labdia citracma</i> (Meyrick, 1915)	dd (r, rd)
<i>Amsactoides solitarius</i> (Wileman, 1910)	s, rd	<i>Labdia oxychlora</i> Meyrick	u, w
<i>Argina astrea</i> (Drury, 1773)	r, rd	<i>Labdia</i> sp. A	dd (r, rd)
<i>Baroa vatata</i> Swinhoe, 1894	f, w	<i>Limnaecia</i> sp. A	u, w
<i>Barsine striata</i> (Bremer & Grey, 1852)	vc, w		
<i>Brunia antica</i> (Walker, 1854)	vc, w	COSSIDAE	
<i>Cretonotus gangis</i> (Linnaeus, 1763)	f, w	<i>Phragmataecia fusca</i> Wileman, 1911	s, w
<i>Cretonotus transiens</i> (Walker, 1855)	c, w	<i>Squamura obliquifasciata</i> Mell, 1923	u, w
<i>Cyana alborosea</i> (Walker, 1864)	c, w	<i>Zeuzera coffeae</i> Nietner, 1861	c, w
<i>Cyana fasciola</i> (Elwes, 1890)	f, l		
<i>Cyana interrogationis</i> (Poujade, 1886)	f, l	CRAMBIDAE	
<i>Cyclomila melanolepia</i> (Dudgeon, 1899)	r, rd	" <i>Cataclysta</i> " <i>angulata</i> (Moore, 1886)	s, rd
<i>Cyclosiella dulcicula</i> (Swinhoe, 1890)	s, rd	<i>Aethaloessa calidalis</i> (Guenée, 1854)	s, l
<i>Diduga flavicostata</i> (Snellen, 1878)	c, w	<i>Aetholix flavibasalis</i> Guenée, 1854	u, l
<i>Eilema fuscodorsalis</i> (Matsumura, 1930)	c, w	<i>Agathodes ostentalis</i> (Geyer, 1837)	u, l
<i>Eressa confinis</i> (Walker, 1854)	f, w	<i>Agrioglypta zelimalis</i> (Walker, 1859)	r, rd
<i>Eugoa bipunctata</i> (Walker, 1862)	f, w	<i>Agrotera</i> sp. nr. <i>basinotata</i>	f, w
<i>Eugoa brunnea</i> Hampson, 1914	f, l	<i>Ancylolomia japonica</i> Zeller, 1877	u, l
<i>Eugoa cyclota</i> Fang, 2000	c, w	<i>Archernis capitalis</i> (Fabricius, 1794)	u, w
<i>Gampola fasciata</i> Moore, 1878	c, l	<i>Ategumia adipalis</i> (Lederer, 1863)	u, w
<i>Hesudra divisa</i> Moore, 1878	s, rd	<i>Ategumia</i> sp. nr. <i>adipalis</i>	vr, rd
<i>Lemyra alikangensis</i> (Strand, 1915)	c, w	<i>Bleszynskia malacelloides</i> (Bleszynski, 1955)	r, rd
Lithosiinae genus & sp. B	r, rd	<i>Bocchoris dispersalis</i> (Zeller, 1852)	c, w
<i>Lyclene acteola</i> (Swinhoe, 1903)	u, l	<i>Botyodes asialis</i> Guenée, 1854	u, rd
<i>Lyclene alikangiae</i> (Strand, 1917)	c, w	<i>Botyodes</i> sp. nr. <i>patulalis</i> (Walker, 1866)	u, l
<i>Lyclene arcuata</i> Moore, 1882	f, w	<i>Bradina admixtalis</i> (Walker, 1859)	r, rd
<i>Macrobroschis fukiensis</i> (Daniel, 1952)	u, rd	<i>Calamotropha formosella</i> Bleszynski, 1961	s, rd
<i>Macrobroschis gigas</i> (Walker, 1854)	f, w	<i>Callibotys</i> sp. A	vr, rd
<i>Microolithosia shaowuica</i> Daniel, 1954	f, l	<i>Callibotys wilemani</i> Munroe & Matuura, 1969	c, w
<i>Miltochrista dentifascia</i> Hampson, 1894	f, w	<i>Camptomastix hisbonalis</i> (Walker, 1859)	c, w
<i>Neasura apicalis</i> (Walker, 1854)	f, l	<i>Cangetta hartoghialis</i> (Snellen, 1872)	u, rd
<i>Neasura hypophaeola</i> Hampson, 1900	s, rd	<i>Circobotys aurealis</i> (Leech, 1889)	r, rd
<i>Neoduma ectozona</i> Hampson, 1918	s, rd	<i>Cirrhochrista brizoalis</i> (Walker, 1859)	u, w
<i>Nyctemera adversata</i> (Schaller, 1788)	c, w	<i>Cirrhochrista fumipalpis</i> Felder, 1875	f, w
<i>Nyctemera lactinicina</i> (Cramer, 1777)	u, rd	<i>Cnaphalocrocis medialis</i> (Guenée, 1854)	c, w
<i>Nyctemera mulleri</i> (Vollenhoven, 1863)	c, w	<i>Condylorrhiza diniasalis</i> (Walker, 1859)	u, w
<i>Palaeopsis</i> sp. nr. <i>diaphana</i> Hampson, 1892	r, rd	<i>Cotachena histricalis</i> (Walker, 1859)	u, w
<i>Philenora</i> sp. A nr. <i>latifascia</i>	r, rd	Crambinae genus & sp. C	s, rd
<i>Pseudoblabeis oophora</i> Zeller, 1853	u, l	<i>Crociodolomia pavonana</i> (Fabricius, 1794)	r, rd
<i>Schistophleps bipuncta</i> Hampson, 1891	vc, w	<i>Crypsiptya coclesalis</i> (Walker, 1859)	f, w
<i>Spilarctia subcarnea</i> (Walker, 1855)	u, w	<i>Culladia hastiferalis</i> (Walker, 1865)	c? w
<i>Spilosoma obliqua</i> Walker, 1855	f, w	<i>Diaphania indica</i> (Saunders, 1851)	f, w
<i>Stictane rectilinea</i> (Snellen, 1879)	f, w	<i>Diaphania perspectalis</i> (Walker, 1859)	f, w
<i>Syntomoides imaon</i> (Cramer, 1780)	c, w	<i>Diasemia accalis</i> (Walker, 1859)	f, w
<i>Syntomoides</i> sp. A	r, rd	<i>Diasemia reticularis</i> (Linnaeus, 1761)	r, rd
<i>Teulisna</i> sp. nr. <i>montanebula</i> Holloway, 2001	c, l	<i>Diathrausta profundalis</i> Lederer, 1863	r, rd
<i>Tigrioides immaculata</i> (Butler, 1880)	c, w	<i>Dichocrocis punctiferalis</i> (Guenée, 1854)	f, w
<i>Utetheisa pulchelloides</i> Hampson, 1907	dd	<i>Dichocrocis tigrina</i> (Moore, 1886)	r, rd
		<i>Dichocrocis zebralis</i> Moore, 1867	u, l
BLASTOBASIDAE		<i>Diplopseustis perieresalis</i> (Walker, 1859)	u, l
<i>Blastobasis</i> sp. A	c, w	<i>Eoophyla</i> sp. A	u, l
<i>Blastobasis</i> sp. B	dd (r, rd)	<i>Eoophyla</i> sp. C	r, rd
<i>Blastobasis</i> sp. C	dd (r, rd)	<i>Eschata miranda</i> Bleszynski, 1965	u, rd
BOMBYCIDAE		<i>Euchromius pygmaea</i> (Hering, 1903)	r, rd
<i>Ernolatia moorei</i> (Hutton, 1865)	f, w	<i>Euclasta vitralis</i> Maes, 1997	f, w
<i>Ocinara albicollis</i> (Walker, 1862)	f, w	<i>Eurrhyarodes accessalis</i> (Walker, 1859)	s, rd
<i>Prismosticta hyalinata</i> Butler, 1885	u, w	<i>Eurrhyarodes bracteolalis</i> (Zeller, 1852)	s, l
<i>Trilocha varians</i> (Walker, 1855)	f, w	<i>Eurrhyarodes tricoloralis</i> (Zeller, 1852)	s, l

<i>Filodes fulvidorsalis</i> (Hübner, 1832)	c, w	Pyraustinae genus & sp. 13	vr, rd
<i>Glyphodes actorionalis</i> Walker, 1859	r, rd	<i>Ramila</i> sp. nr. <i>accusalis</i> (Walker, 1859)	u, l
<i>Glyphodes bicolor</i> (Swainson, [1821])	c, w	<i>Rehimena phrynealis</i> (Walker, 1859)	f, l
<i>Glyphodes bivittalis</i> Guenée, 1854	c, w	<i>Sameodes cancellalis</i> (Zeller, 1852)	f, w
<i>Glyphodes caesalis</i> [group] Walker, 1859	f, w	<i>Scirpophaga nivella</i> (Fabricius, 1794)	s, l
<i>Glyphodes canthusalis</i> Walker, 1859	s, rd	<i>Scirpophaga praelata</i> (Scopoli, 1763)	u, l
<i>Glyphodes onychinalis</i> (Guenée, 1854)	s, l	<i>Sinibotys habisalis</i> (Walker, 1859)	u, w
<i>Glyphodes stolalis</i> [group] Guenée, 1854	s, l	<i>Spoladea recurvalis</i> (Fabricius, 1775)	c, w
<i>Gypititia</i> sp. nr. <i>ochracealis</i> (Walker, 1866)	u, rd	<i>Strepsinoma croesusalis</i> (Walker, 1859)	u, rd
<i>Haritalodes derogata</i> (Fabricius, 1775)	c, w	<i>Syllepte balteata</i> (Fabricius, 1798)	u, l
<i>Hellula undalis</i> (Fabricius, 1781)	f, w	<i>Syllepte dissipatalis</i> (Lederer, 1863)	r, rd
<i>Hemiscopsis sanguinea</i> Bänziger, 1987	c, w	<i>Syllepte maculalis</i> (Leech, 1889)	s, l
<i>Hendicasis duplifascialis</i> (Hampson, 1891)	r, l	<i>Syllepte ningpoalis</i> Leech	u, rd
<i>Heortia vitessoides</i> (Moore, [1885])	c, w	<i>Syllepte permitesens</i> (Swinhoe, 1894)	c, w
<i>Herpetogramma bipunctalis</i> (Fabricius, 1794)	f, w	<i>Syllepte sellalis</i> (Guenée, 1854)	u, l
<i>Herpetogramma licarsisalis</i> (Walker, 1859)	c, w	<i>Syllepte</i> sp. B nr. <i>dissipatalis</i> (Lederer, 1863)	s, rd
<i>Herpetogramma submarginalis</i> (Swinhoe, 1901)	f, w	<i>Syllepte</i> sp. C	r, rd
<i>Hyalobathra micralis</i> Caradja, 1932	c? w	<i>Symmoracma minoralis</i> (Snellen, 1880)	u, l
<i>Hyalobathra opheltesalis</i> (Walker, 1859)	u, l	<i>Syntonarcha iriastis</i> Meyrick, 1890	c, w
<i>Hyalobathra</i> sp. nr. <i>auratalis</i> (Warren, 1895)	f, l	<i>Talanga sexpunctalis</i> (Walker, 1874)	c, w
<i>Hydriris ornatalis</i> (Duponchel, 1832)	c, w	<i>Thysanoima stellata</i> (Warren, 1896)	r, rd
<i>Hymenia perspectalis</i> (Hübner, 1796)	u, w	<i>Trichophysetis hamponi</i> South, 1901	s, rd
<i>Ischnurges gratosalis</i> (Walker, 1859)	f, w	<i>Trichophysetis problematica</i> (Fabricius, 1794)	s, rd
<i>Isocentris fulalis</i> (Guenée, 1854)	c, w	<i>Tyspanodes linealis</i> (Moore, 1867)	u, l
<i>Lamprosema commixta</i> (Butler, 1879)	s, rd	<i>Udea ferrugalis</i> (Hübner, 1796)	s, rd
<i>Lamprosema pallidinotalis</i> Hampson, 1912	s, l	<i>Udea</i> sp. A	u, l
<i>Lamprosema poeonalis</i> (Walker, 1859)	r, rd	<i>Udea testacea</i> (Butler, 1879)	r, rd
<i>Lamprosema sibirialis</i> (Mill, 1879)	f, l	<i>Voliba biannulalis</i> Walker, 1865	s, l
<i>Lamprosema tampusalis</i> (Walker, 1859)	c, w		
<i>Leucinodes apicalis</i> Hampson, 1896	s, l	DREPANIDAE	
<i>Leucinodes orbonalis</i> Guenée, 1854	s, w	<i>Oreta extensa</i> Walker, 1855	r, l
<i>Lygropia quaternalis</i> (Zeller, 1852)	c, w	<i>Oreta insignis</i> Butler, 1877	c, w
<i>Marasmia latimarginalis</i> (Hampson, 1891)	f, w	<i>Oreta loochooana</i> Swinhoe, 1902	c, w
<i>Marasmia poeyalis</i> (Boisduval, 1833)	s, l	<i>Strepsigonia diluta</i> (Warren, 1897)	f, rd
<i>Marasmia venilialis</i> (Walker, 1859)	c, w	<i>Thyatira batis</i> (Linnaeus, 1758)	u, l
<i>Maruca vitrata</i> (Fabricius, 1787)	c, w	<i>Tridrepana fulvata</i> (Snellen, 1876)	f, w
<i>Metasia coniotalis</i> Hampson, 1903	s, l		
<i>Metoea foederalis</i> (Guenée, 1854)	c, w	EUPTEROTIDAE	
<i>Metoea nymphulalis</i> (Strand, 1918)	r, rd	<i>Apha</i> sp. A / nov.	c, w
<i>Musotima suffusalis</i> (Hampson, 1893)	u, rd	<i>Ganisa pandya</i> Moore, 1865	c, w
<i>Nagiella inferior</i> [group] (Hampson, 1898)	u, l		
<i>Nausinoe geometralis</i> (Guenée, 1854)	s, l	GELECHIIDAE	
<i>Neomusotima fuscolinealis</i> Yoshiyasu, 1985	r, rd	<i>Anarsia</i> sp. B	u, l
<i>Nomophila noctuella</i> ([Denis & Schiffermüller], 1775)	r, migrant?	<i>Anarsia</i> sp. nr. <i>isogona</i> Meyrick, 1913	u, l
<i>Nosophora albiguttalis</i> Swinhoe, 1890	c, w	<i>Dichomeris corniculata</i> (Meyrick, 1913)	u, l
<i>Nosophora semitritalis</i> (Lederer, 1863)	f, w	<i>Dichomeris</i> sp. nr. <i>mesoglena</i> Meyrick, 1923	dd (s, l)
<i>Nosophora</i> sp. nov.	r, rd	<i>Dichomeris</i> sp. nr. <i>ochthophora</i> Meyrick, 1936	u, l
<i>Nymphicula</i> sp. C	r, rd	Gelechiidae genus & sp. B	dd (r, rd)
<i>Nymphicula</i> sp. nr. <i>xanthobathra</i> (Meyrick, 1894)	s, l	Gelechiidae genus & sp. C	s, rd
Nymphulinae genus & sp. A	vr, rd	Gelechiidae genus & sp. D	dd (u, w)
<i>Omiodes analis</i> (Snellen, 1890)	c, w	Gelechiidae genus & sp. G	s, l
<i>Omiodes diemenalis</i> (Guenée, 1854)	u, w	Gelechiidae genus & sp. M	dd
<i>Omiodes indicata</i> (Fabricius, 1775)	s, rd	<i>Helcystogramma</i> sp. A	dd (u, rd)
<i>Omiodes</i> sp. D	s, rd	<i>Helcystogramma triannulella</i> (Herrich-Shäffer, 1854)	s, w
<i>Ostrina furnacalis</i> (Guenée, 1854)	dd (r, rd?)	<i>Hypatima</i> sp. nr. <i>arignota</i>	u, l
<i>Pachynoa sabelialis</i> (Guenée, 1854)	s, l	<i>Hypatima spathota</i> (Meyrick, 1913)	f, w
<i>Pagyda lustralis</i> Snellen, 1890	s, rd		
<i>Pagyda</i> sp. nr. <i>salvalis</i> Walker, 1859	r, rd	GEOMETRIDAE	
<i>Palpita annulifer</i> [group] Inoue, 1996	f, w	<i>Abraxas amricula</i> Wehrli, 1935	c, w
<i>Palpita asiaticalis</i> Inoue, 1994	s, w	<i>Abraxas illuminata</i> Warren, 1894	c, w
<i>Palpita minuscula</i> Inoue, 1996	endemic; u, w	<i>Agathia arcuata</i> Moore, 1868	u, w
<i>Palpita pajmii</i> Kirti & Rose, 1992	s, l	<i>Agathia carissima</i> Butler, 1848	c, w
<i>Palpita warrenalis</i> (Swinhoe, 1894)	s, rd	<i>Agathia lycaenaria</i> (Kollar, [1844] 1848)	c, w
<i>Paracymoriza vagalis</i> (Walker, [1866])	s, l	<i>Alcis</i> sp. nr. <i>imbecilis</i>	r, rd
<i>Paraponyx diminutalis</i> Snellen, 1880	u, w	<i>Amraica recursaria</i> (Walker, 1860)	s, w
<i>Pardomima distorta</i> Moore, 1886	u, l	<i>Anectropis ningpoaria</i> (Leech, 1891)	c, l
<i>Parotis punctiferalis</i> (Walker, [1866])	c, w	<i>Antitrygodes agrata vicina</i> (Thierry-Mieg, 1907)	f, w
<i>Parotis suralis</i> (Lederer, 1863)	u, w	<i>Antitrygodes divisaria</i> (Walker, 1861)	c, w
<i>Pleuroptya iopasalis</i> (Walker, 1859)	f, rd	<i>Ascotis selenaria</i> ([Denis & Schiffermüller], 1775)	c, w
<i>Pleuroptya</i> sp. A	r, rd	<i>Asthenes undulata</i> (Wileman, 1915)	u, w
<i>Pleuroptya</i> sp. C nr. <i>verecunda</i>	s, rd	<i>Axinoptera anticostalis</i> Galsworthy, 1999	r, rd
<i>Prooedema incisalis</i> (Walker, [1866])	s, w	<i>Axinoptera orphnobathra</i> (Prout, 1940)	s, rd
<i>Prophantis adusta</i> Inoue, 1986	f, w	<i>Axinoptera turgidata</i> (Walker, 1866)	s, rd
<i>Psara basalis</i> (Walker, 1865)	u, w	<i>Berta chrysolineata</i> Walker, 1862 [1863]	f, w
<i>Psara cynaralis</i> (Walker, 1859)	f, w	<i>Berta rugosivalva</i> Galsworthy, 1997	r, rd
<i>Pseudargyria interruptella</i> (Walker, 1866)	c, l	<i>Biston suppressaria</i> (Guenée, 1858)	c, w
<i>Pseudocatharylla duplicella</i> (Hampson, 1895)	c? w	<i>Bosara emarginaria</i> (Hampson, 1893)	s, l
<i>Pycnarmon cribrata</i> (Fabricius, 1794)	f, w	<i>Bosara errabunda</i> (Prout, 1958)	s, l
<i>Pycnarmon meritalis</i> (Walker, 1859)	r, rd	<i>Bosara subrobusta</i> (Inoue, 1988)	u, w
<i>Pycnarmon radiata</i> (Warren, 1896)	c, w	<i>Calletaera digrammata</i> Wehrli, 1925	c, w
<i>Pygospila tyres</i> (Cramer, 1780)	s, rd	<i>Casuariclystis latifascia</i> (Walker, 1866)	u, l
Pyraustinae genus & sp. 4	r, rd	<i>Celenna festiviaria</i> (Fabricius, 1794)	c, w
Pyraustinae genus & sp. 9	r, rd	<i>Chaetolopha incurvata</i> (Moore, 1888)	u, l

<i>Chiasmia clivicola</i> (Prout, 1926)	f, w	<i>Luxiaria amasa</i> (Butler, 1878)	s, rd
<i>Chiasmia cymatodes</i> (Wehrli, 1932)	f, rd	<i>Luxiaria emphatica</i> Prout, 1925	c, w
<i>Chiasmia emersaria</i> (Walker, 1861)	c, w	<i>Luxiaria mitorrhapes</i> Prout, 1925	f, w
<i>Chiasmia fidoniata</i> Guenée, [1858]	c, w	<i>Luxiaria phyllosaria</i> (Walker, 1860)	f, w
<i>Chiasmia fulvida</i> (Warren, 1905)	r, rd	<i>Macaria abydata</i> Guenée, 1857	Intr.; u, w
<i>Chiasmia monticolaria</i> (Leech, 1897)	f, rd	<i>Maxates brevicaudata</i> Galsworthy, 1997	endemic; f, l
<i>Chiasmia nora</i> (Walker, 1861)	u, l	<i>Maxates coelataria</i> (Walker, 1861)	f, w
<i>Chiasmia ozariaria</i> (Walker, 1860)	f, w	<i>Maxates quadripunctata</i> (Inoue, 1989)	u, rd
<i>Chiasmia</i> sp. A / nov (nr. <i>triangulata</i>)	u, rd	<i>Maxates veninotata</i> (Warren, 1894)	dd (r, rd)
<i>Chiasmia</i> sp. B nr. <i>pluviata</i>	s, rd	<i>Metallaxis semipurpurascens</i> (Hampson, 1896)	f, w
<i>Chiasmia</i> sp. C	s, rd	<i>Microcalcarifera obscura</i> (Butler, 1878)	f, l
<i>Chiasmia</i> sp. D	f, l	<i>Microcalicha reelsi</i> Sato & Galsworthy, 1998	f, rd
<i>Chiasmia triangulata</i> (Hampson, 1891)	s, l	<i>Mnesiloba dentifascia</i> (Hampson, 1891)	u, l
<i>Chloroclystis conversa</i> (Warren, 1897)	f, l	<i>Myrioblephara simplaria</i> (Swinhoe, 1894)	s, l
<i>Chorodna creataria</i> (Guenée, [1858])	u, w	<i>Myrteta sericius</i> Butler, 1879	u, rd
<i>Chorodna ochreimacula</i> Prout, 1914	f, w	<i>Nipponogelasma chlorissoides</i> (Prout, 1912)	u, w
<i>Chorodna strixaria</i> (Guenée, 1858)	c, w	<i>Nothomiza flavicosta</i> Prout, 1914	c, w
<i>Chrysocraspeda faganaria</i> (Guenée, 1858)	s, l	<i>Obeidia tigrata</i> (Guenée, 1858)	c, w
<i>Chrysocraspeda miniosa</i> (Warren, 1899)	f, w	<i>Ophthalmitis herbidaria</i> (Guenée, 1858)	c, w
<i>Cleora alienaria</i> (Walker, 1860)	vc, w	<i>Organopoda carnearia</i> (Walker, 1861)	f, l
<i>Cleora fraterna</i> (Moore, 1888)	c, w	<i>Orthonama obstipata</i> (Fabricius, 1794)	c, w
<i>Cleora injectaria</i> (Walker, 1860)	f, w	<i>Ourapteryx clara</i> Butler, 1880	c, w
<i>Cleora repulsaria</i> (Walker, 1860)	f, w	<i>Oxymacaria temeraria</i> (Swinhoe, 1891)	f, w
<i>Collix ghosha</i> Walker, 1862	f, rd	<i>Ozola minor</i> (Moore, 1888)	r, l
<i>Comostola meritararia</i> (Walker, 1861)	c, w	<i>Paramaxates vagata</i> (Walker, 1861)	r, rd
<i>Comostola pyrrogona</i> (Walker, 1866)	f, w	<i>Parumelea eugeniata</i> (Guenée, 1857)	c, w
<i>Coremecis nigrovittata</i> (Moore, 1868)	u, l	<i>Pasiphila</i> sp. nr. <i>viridata</i> Warren	r, rd
<i>Coremecis</i> sp. A	s, l	<i>Pelagodes antiquadraria</i> (Inoue, 1976)	c, w
<i>Corymica arnearia</i> Walker, 1860	f, w	<i>Pelagodes subquadraria</i> (Inoue, 1976)	f, w
<i>Corymica spatiosa</i> Prout, 1925	c, w	<i>Peratophyga venetia</i> Swinhoe, 1902	c, w
<i>Dasyboarmia subpilosa</i> (Warren, 1894)	vc, w	<i>Percnia</i> sp. nr. <i>luridaria</i> (Leech, 1897)	c, w
<i>Dindica olivacea</i> Inoue, 1990	c, l	<i>Perixera absconditaria</i> (Walker, 1863)	s, l
<i>Ecliptoptera furva</i> (Swinhoe, 1891)	r, rd	<i>Perixera decretarioides</i> Holloway, 1997	c, l
<i>Ectropis bhurmitra</i> (Walker, 1860)	c, w	<i>Perixera flavispila</i> Warren, 1896	f, w
<i>Entomopteryx obliquilinea</i> (Moore, 1888)	u, l	<i>Perixera griseata</i> (Warren, 1896)	f, l
<i>Eois grataria</i> (Walker, 1861)	r, l	<i>Perixera illepidaria</i> (Guenée, 1858)	u, rd
<i>Eucyclodes infracta</i> (Wileman, 1911)	c, w	<i>Perixera minorata</i> (Warren, 1897)	c, w
<i>Eucyclodes semialba</i> (Walker, 1861)	f, w	<i>Perixera punctata</i> (Warren, 1897)	s, l
<i>Eumelea biflavata</i> Warren, 1896	u, w	<i>Perixera</i> sp. B nr. <i>taiwanus</i> Wileman, 1911	r, rd
<i>Eupithecia costalis</i> (Walker, 1863)	f, w	<i>Pingasa chloroides</i> Galsworthy, 1998	u, l
<i>Eupithecia rigida</i> Swinhoe, 1892	f, l	<i>Pingasa rubicaunda</i> Warren, 1894	s, w
<i>Eupithecia sekkongensis</i> Galsworthy, 1999	endemic; s, rd	<i>Pingasa rubimontana</i> Holloway & Sommerer, 1984	u, w
<i>Fascellina chromataria</i> Walker, 1860	vc, w	<i>Pingasa ruginaria</i> (Guenée, 1857 [1858])	c, w
<i>Fascellina plagiata</i> (Walker, 1866)	c, w	<i>Platycerota vitticostata</i> (Walker, [1863])	f, rd
<i>Glaucoclystis griseorufa</i> (Hampson, 1898)	s, rd	<i>Plesiomorpha flaviceps</i> (Butler, 1881)	c, w
<i>Glaucoclystis immixtaria</i> (Walker, 1862)	s, l	<i>Plutodes costatus</i> (Butler, 1866)	vc, w
<i>Gonanticlea aversa</i> Swinhoe, 1892	r, rd	<i>Plutodes exquisita</i> Butler, 1880	c, w
<i>Gymnoscelis taprobanica</i> Prout, 1958	u, w	<i>Problepsis conjunctiva</i> Warren, 1893	s, w
<i>Hemitheta marina</i> (Butler, 1878)	c, w	<i>Problepsis eucircota</i> Prout, 1913	r, rd
<i>Hemitheta tritonaria</i> (Walker, [1863])	c, w	<i>Problepsis vulgaris</i> Butler, 1889	f, w
<i>Heterochroma cristata</i> (Warren, 1894)	c, w	<i>Protouliocnemis biplagiata</i> (Moore, [1887])	c, w
<i>Heteralex unilinea</i> (Swinhoe, 1902)	c, w	<i>Pseudeuchlora kafebera</i> (Swinhoe, 1894)	c, w
<i>Heterostegane tritocampsis</i> (Prout, 1934)	s, rd	<i>Pseudocollix hyperythra</i> (Hampson, 1895)	c, w
<i>Heterostegane urbica</i> (Swinhoe, 1885)	u, rd	<i>Pseudonadagara semicolor</i> (Warren, 1895)	c, w
<i>Hypomecis cineracea</i> (Moore, 1888)	f, l	<i>Pseudothalera carolinae</i> Galsworthy, 1997	u, l
<i>Hypomecis eosaria</i> (Walker, 1863)	u, l	<i>Psilalcis galsworthyi</i> Sato, 1996	vc, w
<i>Hypomecis transcissa</i> (Walker, 1860)	vc, w	<i>Pylargosceles steganioides</i> (Butler, 1878)	c, w
<i>Hyposidra infixaria</i> (Walker, 1860)	vc, w	<i>Racotis boarmiaria</i> (Guenée, 1857)	c, w
<i>Hyposidra talaca</i> (Walker, 1860)	vc, w	<i>Rhomborista monosticta</i> (Wehrli, 1924)	f, w
<i>Idea chotaria</i> Swinhoe, 1886	r, rd	<i>Rutellerona pseudocessaria</i> Holloway, 1993 [1994]	c, w
<i>Idea costiguttata</i> (Warren, 1896)	c, w	<i>Sarcinodes aequilinearia</i> (Walker, 1860)	s, rd
<i>Idea impexa</i> (Butler, 1879)	c, w	<i>Sarcinodes debitaria</i> (Walker, [1863] 1862)	u, rd
<i>Idea jakima</i> (Butler, 1878)	f, w	<i>Sarcinodes restitutaria</i> (Walker, [1863] 1862)	f, rd
<i>Idea macrospila</i> (Prout, 1926)	c, w	<i>Sauris interruptata</i> (Moore, 1888)	s, l
<i>Idea phaeocrossa</i> (Prout, 1932)	f, w	<i>Scardamia metallaria</i> Guenée, 1858	u, w
<i>Idea ptyonopoda</i> (Hampson, 1895)	c, w	<i>Scopula fibulata</i> (Guenée, [1858])	u, w
<i>Idea sakurarii</i> (Inoue, 1963)	c, w	<i>Scopula lacriphaga</i> Banziger & Fletcher, 1985	s, l
<i>Idea</i> sp. A	s, l	<i>Scopula mecysma</i> (Swinhoe, 1894)	s, rd
<i>Idea taiwana</i> (Wileman & South, 1917)	s, l	<i>Scopula nesciraria</i> (Walker, 1861)	u, l
<i>Idea trisetata</i> (Prout, 1922)	s, l	<i>Scopula nupta</i> (Butler, 1878)	u, w
<i>Idea vacillata</i> (Walker, 1862)	c, w	<i>Scopula propinquaria</i> (Leech, 1897)	f, w
<i>Idiochlora minuscula</i> (Inoue, 1986)	s, w	<i>Scopula</i> sp. A	r, rd
<i>Jodis nanda</i> (Walker, 1861)	s, l	<i>Scopula</i> sp. C (nov.)	c, w
<i>Jodis subtractata</i> (Walker, 1863)	s, l	<i>Serratophyga subangulata</i> (Warren, 1896)	s, l
<i>Kranandra latimarginaria</i> (Leech, 1891)	c, w	<i>Serratophyga xanthospilaria</i> (Wehrli, 1925)	c, w
<i>Kranandra oliveomarginata</i> Swinhoe, 1894	vc, w	<i>Sigilliclystis kendricki</i> Galsworthy, 1999	endemic; c, w
<i>Lomographa claripennis</i> Inoue, 1977	u, l	<i>Somatina anthophilata</i> Guenée, 1858	u, w
<i>Lomographa inamata</i> (Walker, 1861)	c, l	<i>Somatina obscuriciliata</i> Wehrli, 1924	c, w
<i>Lophophelma calaurops</i> (Prout, 1912)	vc, w	<i>Somatina plynusaria</i> (Walker, 1862)	f, w
<i>Lophophelma funebrosa</i> (Warren, 1896)	c, w	<i>Spaniocentra hollowayi</i> Inoue, 1986	s, rd
<i>Lophophelma luteipes</i> (Felder & Rogenhofer, 1875)	c, w	<i>Spaniocentra kuniyukii</i> Yazaki, 1994	f, l
<i>Lophophleps triangularis</i> (Hampson, 1895)	c, w	<i>Spiralisigna subpumlata</i> (Inoue, 1972)	f, w
<i>Loxofidonia buda</i> (Swinhoe, 1895)	s, rd	<i>Synegia eumeleata</i> (Walker, 1861)	f, w

<i>Tanaorhinus viridiluteata</i> (Walker, 1861)	u, l	<i>Achaea serva</i> (Fabricius, 1775)	u, w
<i>Thalassodes immissaria</i> Walker, 1861	c, w	<i>Acidon evae</i> Lödl, 1998	c, w
<i>Timandra convectaria</i> Walker, 1861	u, w	<i>Acidon paradoxa</i> Hampson, 1896	f, rd
<i>Traminda aventiaria</i> (Guenée, 1858)	c, w	Acontinae genus & sp. B	r, rd
<i>Xanthorhoe</i> sp. A	dd (r, rd)	Acontinae genus & sp. D	r, rd
<i>Xerodes contiguaria</i> Leech, 1897	u, w	<i>Acrapex azumai</i> Sugi, 1970	f, w
<i>Zanclopera falcata</i> Warren, 1894	c, w	<i>Acronicta pruinosa</i> (Guenée, 1852)	f, l
<i>Zeheba aureata</i> Moore, [1887]	f, w	<i>Actinotia australis</i> Holloway, 1989	r, l
GRACILLARIIDAE			
<i>Caloptilia</i> sp. nr. <i>zehntneri</i> Snellen, 1901	c, w	<i>Adrapsa abluialis</i> Walker, [1859] 1858	c, w
<i>Epicephala albifrons</i> Stainton	u, w	<i>Adrapsa quadrilinealis</i> Wileman, 1914	c, w
<i>Gibbovalva quadrifasciata</i> (Stainton, 1863)	dd (r, rd)	<i>Adrapsa</i> sp. A / nov.	f, l
Gracillariidae genus & sp. C	dd (s, w)	<i>Adria tyrannus</i> (Guenée, 1852)	s, rd
Gracillariidae genus & sp. E	dd (r, rd)	<i>Aedia leucomelas</i> (Linnaeus, 1758)	f, w
IMMIDAE			
<i>Imma mylias</i> Meyrick, 1906	f, w	<i>Aeogramma albiscripta</i> (Hampson, 1897)	c, w
LASIOCAMPIDAE			
<i>Dendrolimus punctatus</i> (Walker, 1855)	f, w	<i>Agrotis ipsilon</i> (Hufnagel, 1766)	c, w
<i>Euthrix isocyma</i> (Hampson, 1892)	vc, w	<i>Amyna natalis</i> (Walker, [1858] 1857)	r, rd
<i>Kunugia divaricata</i> (Moore, 1884)	c, w	<i>Amyna octo</i> (Guenée, 1852)	f, w
<i>Metanastria gemella</i> de Lajonquière, 1979	u, l	<i>Amyna punctum</i> (Fabricius, 1794)	f, w
<i>Metanastria hyrtaca</i> (Cramer, 1779)	u, w	<i>Anachrostitis</i> sp. nr. <i>nigripuncta</i> Hampson, 1893	f, w
<i>Odonestis vita</i> Moore, 1859	s, l	<i>Anadevidia peponis</i> (Fabricius, 1775)	u, l
<i>Paralebeda plagifera</i> (Walker, 1855)	f, w	<i>Anigraea albomaculata</i> (Hampson, 1894)	r, rd
<i>Trabala vishnou</i> (Lefebvre, 1827)	u, w	<i>Anigraea cinctipalpis</i> (Walker, 1865)	r, rd
LECITHOCERIDAE			
<i>Homaloxestis myloxesta</i> Meyrick, 1932	c, w	<i>Anisoneura aluco</i> (Fabricius, 1775)	u, w
<i>Lecitholoxa thiodora</i> (Meyrick, 1914)	dd (r, rd)	<i>Anisoneura salebrosa</i> Guenée, 1852	c, w
Lecithoceridae genus & sp. G	u, w	<i>Anomis figlina</i> Butler, 1889	c, w
Lecithoceridae genus & sp. J	dd (r, rd)	<i>Anomis flava</i> (Fabricius, 1775)	c, w
Lecithoceridae genus & sp. M	dd (r, rd)	<i>Anomis fulvida</i> Guenée, 1852	u, rd
Lecithoceridae genus & sp. AA	r, rd	<i>Anomis leucolopha</i> Prout, 1928	f, w
LIMACODIDAE			
<i>Cania bilinea</i> Walker, 1859	c, w	<i>Anomis mesogona</i> (Walker, [1858] 1857)	c, w
<i>Darna furva</i> (Wileman, 1911)	f, w	<i>Anoratha paritalis</i> (Walker, [1859] 1858)	r, rd
<i>Darna pallivitta</i> (Moore, 1877)	f, w	<i>Antha grata</i> (Butler, 1881)	u, l
<i>Griseothosea fasciata</i> (Moore)	u, w	<i>Apamea sodalis</i> (Butler, 1878)	f, l
<i>Hyphorma minax</i> Walker, 1865	s, w	<i>Aparasa radians</i> (Westwood, 1848)	s, rd
<i>Miresa</i> sp. nov.	c, w	<i>Arcte coerulea</i> (Guenée, 1852)	r, rd
<i>Narosa nigrisigna</i> Wileman, 1911	c, w	<i>Argyrogramma signata</i> (Fabricius, 1775)	s, rd
<i>Parasa pseudorepanda</i> Hering	f, w	<i>Arsacia rectalis</i> (Walker, 1863)	c, w
<i>Parasa</i> sp. nov. A Galsworthy, in prep.	u, w	<i>Artena dotata</i> (Fabricius, 1794)	c, w
<i>Phlossa conjuncta</i> (Walker, [1855])	f, w	<i>Asota caricae</i> (Fabricius, 1775)	c, w
<i>Phlossa melli</i> (Hering, 1931)	c, l	<i>Asota heliconia</i> (Linnaeus, 1758)	c, w
<i>Pseudidonauton bhaga</i> (Swinhoe, 1901)	u, l	<i>Asota plaginota</i> Butler, 1875	c, w
<i>Quasithosea obliquistriga</i> (Hering, 1931)	f, w	<i>Asota pallivitta</i> (Butler, 1881)	r, rd
<i>Thosea sinensis</i> (Walker, 1859)	f, w	<i>Athetis bremusa</i> (Swinhoe, 1885)	c, w
LYMANTRIIDAE			
<i>Arna bipunctapex</i> (Hampson, 1891)	f, w	<i>Athetis cognata</i> (Moore, 1882)	c, w
<i>Aroa substrigosa</i> (Walker, 1855)	c, w	<i>Athetis hongkongensis</i> Galsworthy, 1997	endemic; c, w
<i>Artaxa inornata</i> Wileman, 1910	u, rd	<i>Athetis ochracea</i> (Hampson, 1894)	u, l
<i>Artaxa</i> sp. nr. <i>cryptosticta</i> Collonette	u, l	<i>Athetis sincera</i> (Swinhoe, 1889)	c, w
<i>Artaxa</i> sp. nr. <i>lubecula</i> Wileman, 1910	f, w	<i>Athetis stellata</i> (Moore, 1882)	c, w
<i>Calliteara angulata</i> (Hampson, 1891)	u, l	<i>Athetis stellulata</i> Chang, 1991	c, w
<i>Calliteara axuthu</i> Collonette, 1934	r, rd	<i>Athetis thoracica</i> (Moore, [1885] 1884-1887)	f, w
<i>Calliteara horsfieldii</i> (Saunders, 1851)	c, w	<i>Athyryma heterographa</i> (Hampson, 1912)	r, rd
<i>Carriola ecnomoda</i> (Swinhoe, 1907)	c, w	<i>Autoba rubra</i> (Hampson, 1902)	r, rd
<i>Dasychira chekiangensis</i> Collonette, 1938	c, w	<i>Avitta fasciosa</i> Moore, 1882	f, l
<i>Dasychira nigriflora</i> Walker, 1865	f, w	<i>Bagada malayica</i> ([Snellen, 1886])	s, rd
<i>Euproctis fraterna</i> (Moore, 1883)	s, rd	<i>Bagada poliomera</i> (Hampson, 1908)	c, l
<i>Euproctis quadrangularis</i> (Moore, 1879)	c, w	<i>Bagada pyrochroma</i> Walker, 1858	f, w
<i>Euproctis</i> sp. G	r, rd	<i>Bagisara plagiata</i> (Walker, 1858)	u, rd
<i>Euproctis</i> sp. nr. <i>seitzei</i> Strand	u, w	<i>Bastilla absentimacula</i> (Guenée, 1852)	c, l
<i>Laelia ceonosa</i> (Hübner, [1808])	r, rd	<i>Bastilla amygdalis</i> (Moore, [1885] 1884-1887)	f, rd
<i>Lymantria dissoluta</i> Swinhoe, 1903	f, w	<i>Bastilla arcuata</i> (Moore, 1887)	c, w
<i>Lymantria mathura</i> Moore, 1865	f, rd	<i>Bastilla crameri</i> (Moore, [1885] 1884-1887)	u, l
<i>Lymantria nebulosa</i> Wileman, 1910	f, l	<i>Bastilla fulvotaenia</i> (Guenée, 1852)	c, w
<i>Nygmia plana</i> [group] Walker, 1856	c, w	<i>Bastilla joviana</i> (Stoll, 1782)	c, w
<i>Nygmia</i> sp. E nr. <i>madana</i> Moore, 1859	r, rd	<i>Bastilla maturata</i> (Walker, 1858)	f, w
<i>Olene inclusa</i> (Walker, 1856)	f, w	<i>Bastilla maturescens</i> (Walker, 1858)	u, l
<i>Orgyia postica</i> (Walker, 1855)	vc, w	<i>Bastilla praetermissa</i> (Warren, 1913)	c, w
<i>Orvasca subnotata</i> (Walker, 1865)	c, w	<i>Belciana scorpio</i> Galsworthy, 1997	endemic; f, l
<i>Perina nuda</i> (Fabricius, 1787)	c, w	<i>Bertula abjudicalis</i> Walker, [1859] 1858	f, l
<i>Toxoproctis</i> sp. D	r, rd	<i>Bertula retracta</i> Galsworthy, 1997	u, w
NOCTUIDAE			
<i>Achaea janata</i> (Linnaeus, 1758)	u, w	<i>Blasticorhinus enervis</i> (Swinhoe, 1890)	f, w
		<i>Blasticorhinus rivulosa</i> (Walker, 1865)	f, w
		<i>Bocula diffisa</i> (Swinhoe, 1890)	u, w
		<i>Bocula marginata</i> (Moore, 1882)	c, w
		<i>Buzara onelia</i> (Guenée, 1852)	c, w
		<i>Calesia dasyptera</i> (Kollar, 1844)	u, w
		<i>Calesia haemorrhoea</i> Guenée, 1852	r, rd
		<i>Callopietria aethiops</i> Butler, 1878	r, rd
		<i>Callopietria apicalis</i> (Walker, 1855)	c, w
		<i>Callopietria exotica</i> (Guenée, 1852)	c, w
		<i>Callopietria flavitincta</i> Galsworthy, 1997	c, w
		<i>Callopietria gutturalis</i> Hampson, 1906	c, w
		<i>Callopietria juvenina</i> (Stoll, 1782)	f, w
		<i>Callopietria leucobasis</i> (Hampson, 1908)	r, rd
		<i>Callopietria maillardi</i> (Guenée, 1862)	r, rd

<i>Callopietria rivularis</i> Walker, [1858] 1857	r, rd	<i>Hypena indicatalis</i> Walker, [1859] 1858	f, w
<i>Callyna semivitta</i> Moore, 1882	f, w	<i>Hypena labatalis</i> Walker, [1859] 1858	u, rd
<i>Calyptra minuticornis</i> (Guenée, 1852)	f, w	<i>Hypena laceratalis</i> Walker, [1859] 1858	c, w
<i>Catada bipartita</i> (Moore, 1882)	f, w	<i>Hypena occatus</i> Hampson, 1882	f, w
<i>Catoblemma semialba</i> (Hampson, 1902)	f, w	<i>Hypena ophiusoides</i> Moore, 1882	f, l
<i>Cerynea contentaria</i> (Walker, 1861)	c, w	<i>Hypena rhombalis</i> Guenée, 1854	r, rd
<i>Cerynea discontenta</i> Galsworthy, 1998	endemic; f, w	<i>Hypena</i> sp. A / nov. nr. <i>umbripennis</i>	s, rd
<i>Cerynea ustula</i> (Hampson, 1898)	c, w	<i>Hypena thermesialis</i> Walker, [1866] 1865	u, l
<i>Chalciopie mygdon</i> (Cramer, 1777)	f, w	<i>Hyperagonia angulata</i> Wileman, 1915	f, w
<i>Chasmina fasciculosa</i> (Walker, 1858)	u, l	Hypeninae genus & sp. B	s, rd
<i>Chasmina sinuata</i> Galsworthy, 1997	endemic; s, l	<i>Hyperlophoides compactilis</i> (Swinhoe, 1890)	f, w
<i>Chrysodeixis acuta</i> (Walker, [1858] 1857)	f, rd	<i>Hyperstrotia molybdota</i> Hampson, 1910	f, l
<i>Chrysodeixis eriosoma</i> (Doubleday, 1843)	c, w	<i>Hyposynoides submarginata</i> (Walker, 1865)	c, l
<i>Chrysodeixis taiwana</i> Dufay, 1974	vr, rd	<i>Hypocala deflorata</i> (Fabricius, 1794)	c, w
<i>Condote angulina</i> (Guenée, 1852)	u, l	<i>Hypocala subsaturata</i> Guenée, 1852	c, w
<i>Condote hypenoides</i> Walker, 1862	u, rd	<i>Hypocala violacea</i> Butler, 1879	u, l
<i>Condica albigutta</i> (Wileman, 1912)	c, w	<i>Hypopyra ossigera</i> Guenée, 1852	u, w
<i>Condica conducta</i> (Walker, [1857] 1856)	c, w	<i>Hypopyra vespertilio</i> (Fabricius, 1787)	c, w
<i>Condica illecta</i> (Walker, 1865)	c, w	<i>Hyposada kadooriensis</i> Galsworthy, 1998	endemic; f, w
<i>Corgatha dictaria</i> (Walker, 1861)	c, w	<i>Hypospila bolinoides</i> Guenée, 1852	c, w
<i>Corgatha nitens</i> (Butler, 1879)	u, w	<i>Ischyja ferrifracta</i> (Walker, [1863] 1864)	s, rd
<i>Corgatha ruficeps</i> (Walker, 1864)	vc, w	<i>Ischyja manlia</i> (Cramer, 1766)	c, w
<i>Corgatha trichogvia</i> Hampson, 1907	f, w	<i>Lacera procellosa</i> Butler, 1879	f, w
<i>Crithote horridipes</i> Walker, 1864	c, w	<i>Lithacodia crotopha</i> (Swinhoe, 1905)	s, rd
<i>Crithote prominens</i> Leech, 1900	c, w	<i>Lophathrum comprimens</i> (Walker, 1858)	c, w
<i>Ctenoplusia agnata</i> (Staudinger, 1892)	f, w	<i>Lophomilia takao</i> Sugi, 1962	r, rd
<i>Ctenoplusia albostrata</i> (Bremer & Grey, 1853)	c, w	<i>Lophonycta confusa</i> (Leech, 1900)	f, l
<i>Dactyloplusia impulsiva</i> (Walker, 1865)	s, l	<i>Lophoptera anthyalus</i> (Hampson, 1894)	u, l
<i>Daddala lucilla</i> (Butler, 1881)	f, w	<i>Lophoptera hemithyris</i> (Hampson, 1905)	r, rd
<i>Diarisia nigrosigna</i> (Moore, 1881)	u, rd	<i>Lophoptera squammigera</i> Guenée, 1852	f, w
<i>Dichromia sagitta</i> (Fabricius, 1775)	u, w	<i>Lophorufa lunifera</i> (Moore, [1885] 1884-1887)	c, w
<i>Dinumma deponens</i> Walker, 1858	dd (r, rd?)	<i>Loxioda similis</i> (Moore, 1882)	f, w
<i>Dinumma placens</i> Walker, 1858	dd (f, w?)	<i>Luceria fletcheri</i> Inoue, 1958	u, l
<i>Diomea rotundata</i> Walker, [1858] 1857	f, l	<i>Luceria oculalis</i> (Moore, 1877)	f, w
<i>Dyptergina indica</i> (Moore, 1867)	vr, rd	<i>Luceria striata</i> Galsworthy, 1997	endemic; f, w
<i>Dysgonia stuposa</i> (Fabricius, 1794)	f, w	<i>Lysimelia alstoni</i> Holloway, 1979	f, w
<i>Epatia longinqua</i> (Swinhoe, 1890)	c, w	<i>Lysimelia lucida</i> Galsworthy, 1997	endemic; c, w
<i>Egnasia mesotypa</i> Swinhoe, 1906	f, rd	<i>Lysimelia neleusalis</i> Walker, [1859] 1858	f, w
<i>Egnasia seclusalis</i> (Walker, [1866] 1865)	c, w	<i>Macaldenia palumba</i> (Guenée, 1852)	c, w
<i>Elusa antennata</i> (Moore, 1882)	c, w	<i>Maguda suffusa</i> (Walker, 1863)	c, w
<i>Enispa elataria</i> (Walker, 1861)	c, w	<i>Maliattha quadripartita</i> (Walker, 1865)	s, rd
<i>Entomogramma faultrix</i> Guenée, 1852	c, w	<i>Maliattha separata</i> Walker, 1863	f, w
<i>Ercheia cyllaria</i> (Cramer, 1779)	c, w	<i>Maliattha signifera</i> (Walker, [1858] 1857)	c, w
<i>Ercheia umbrosa</i> Butler, 1881	f, rd	<i>Mecodina aequilinea</i> Hampson, 1926	f, w
<i>Erebus ephesperis</i> (Hübner, [1823] 1816)	c, w	<i>Mecodina agrestis</i> (Swinhoe, 1890)	f, l
<i>Ericeia acutangula</i> Roepke, 1932	c, w	<i>Mecodina praecipua</i> (Walker, 1865)	c, w
<i>Ericeia eriophora</i> (Guenée, 1852)	u, l	<i>Metaemene atriguttata</i> (Walker, 1862)	f, w
<i>Ericeia inangulata</i> (Guenée, 1852)	u, l	<i>Metaopta rectifasciata</i> (Ménétriés, 1863)	s, rd
<i>Ericeia pertendens</i> (Walker, 1858)	c, w	<i>Mimeusemia postica</i> (Walker, 1862)	c, w
<i>Ericeia subcinerea</i> (Snellen, 1880)	vc, w	<i>Mixomelia rivulosa</i> (Wileman, 1915)	vr, rd
<i>Erygia apicalis</i> Guenée, 1852	c, w	<i>Mocis frugalis</i> (Fabricius, 1775)	c, w
<i>Eublemma albostrata</i> Wileman & West, 1929	f, l	<i>Mocis undata</i> (Fabricius, 1775)	c, w
<i>Eublemma anachoresis</i> (Wallengren, 1863)	u, w	<i>Mosopia sordidum</i> (Butler, 1879)	s, rd
<i>Eublemma baccalix</i> (Swinhoe, 1886)	f, l	<i>Mythimna argentea</i> Yoshimatsu, 1994	s, rd
<i>Eublemma cochylionides</i> (Guenée, 1852)	c, w	<i>Mythimna celebensis</i> (Tams, 1935)	u, w
<i>Eublemma parva</i> (Hübner, [1808])	s, l	<i>Mythimna compta</i> Moore, 1881	u, w
<i>Eublemma ragusana</i> (Freyer, 1845)	c, w	<i>Mythimna decisissima</i> Walker, 1865	c, w
<i>Eublemma rivula</i> (Moore, 1882)	f, w	<i>Mythimna designata</i> Walker, 1856	r, rd
<i>Eublemma roseonivea</i> (Walker, [1863] 1864)	r, rd	<i>Mythimna distincta</i> (Moore, 1881)	f, l
<i>Eublemmoides crassiuscula</i> (Walker, 1864)	r, rd	<i>Mythimna fasciata</i> (Moore, 1881)	u, w
<i>Eudocima salamina</i> (Cramer, 1777)	f, w	<i>Mythimna formosana</i> Butler, 1880	u, l
<i>Eustrotia marginata</i> (Walker, 1866)	r, rd	<i>Mythimna formosicola</i> (Yoshimatsu, 1992)	f, rd
<i>Eutelia adulatricoides</i> (Mell, 1943)	s, rd	<i>Mythimna loreyi</i> (Duponchel, 1827)	r, rd
<i>Eutelia favillatrixoides</i> Poole, 1989	s, rd	<i>Mythimna macellaroides</i> Poole, 1989	f, w
<i>Eutelia geyeri</i> (Felder & Rogenhofer, 1874)	u, rd	<i>Mythimna moorei</i> (Swinhoe, 1902)	r, rd
<i>Falana sordida</i> Moore, 1882	f, w	<i>Mythimna polysticha</i> Turner, 1902	u, l
<i>Feliniopsis indistans</i> (Guenée, 1852)	u, w	<i>Mythimna reversa</i> (Moore, [1885] 1884-1887)	c, w
<i>Feliniopsis margarita</i> Galsworthy, 1997	s, l	<i>Mythimna separata</i> (Walker, 1865)	f, w
<i>Flammona trilineata</i> Leech, 1900	c, w	<i>Mythimna snelleni</i> Hreblay, 1996	c, w
<i>Floccifera erigida</i> (Swinhoe, 1890)	u, rd	<i>Mythimna</i> sp. A nr. <i>formosicola</i>	u, rd
<i>Gesonia obeiditalis</i> Walker, [1859] 1858	c, w	<i>Mythimna</i> sp. B nr. <i>formosicola</i>	s, rd
<i>Goniocraspedon mistura</i> (Swinhoe, 1891)	f, l	<i>Mythimna stolidia</i> (Leech, 1889)	dd (c?, w)
<i>Hadennia jutalis</i> (Walker, [1859])	c, w	<i>Mythimna tangala</i> Felder & Rogenhofer, 1874	u, w
<i>Helicoverpa armigera</i> (Hübner, [1809])	f, w	<i>Mythimna tricorna</i> Hreblay, Legrain & Yoshimatsu, 1998	c, w
<i>Hepatica irrorata</i> (Wileman & South, 1917)	s, rd	<i>Mythimna yu</i> Guenée, 1852	c, w
<i>Hepatica</i> sp. A / nov.	u, l	<i>Naarda ochrestigma</i> (Hampson, 1893)	f, rd
<i>Hulodes caranea</i> (Cramer, 1780)	f, w	<i>Narangodes haemorranta</i> Hampson, 1910	f, w
<i>Hydrillodes abavalis</i> (Walker, [1859] 1858)	c, w	<i>Neachrostia undulata</i> (Hampson, 1893)	s, l
<i>Hydrillodes hemusalis</i> (Walker, [1859] 1858)	c, w	<i>Nodaria externalis</i> Guenée, 1854	c, w
<i>Hydrillodes lentalis</i> Guenée, 1854	c, w	<i>Nodaria simplex</i> Hampson, 1898	r, rd
<i>Hypena albisigna</i> Moore, 1882	f, rd	<i>Nonagria nigropunctata</i> (Wileman, 1912)	u, w
<i>Hypena conscitalis</i> Walker, [1866] 1865	s, rd	<i>Oglastra stygiana</i> Galsworthy, 1997	endemic; f, w
<i>Hypena iconicalis</i> Walker, [1859] 1858	u, rd	<i>Oglastra umbrosa</i> (Wileman, 1916)	u, l

<i>Olulis puncticinctalis</i> Walker, 1863	c, w	<i>Sphragifera rejecta</i> (Fabricius, 1775)	f, w
<i>Ommatophora luminosa</i> (Cramer, 1780)	r, rd	<i>Spirama retorta</i> (Clerck, 1759)	u, w
<i>Ophisma gravata</i> Guenée, 1852	u, w	<i>Spodoptera cilium</i> Guenée, 1852	f, w
<i>Ophiusa coronata</i> (Fabricius, 1775)	u, w	<i>Spodoptera exigua</i> (Hübner, [1808])	f, w
<i>Ophiusa disjungens</i> (Walker, 1858)	f, l	<i>Spodoptera litura</i> (Fabricius, 1775)	c, w
<i>Ophiusa tirhaca</i> (Cramer, 1780)	u, l	<i>Spodoptera mauritia</i> (Boisduval, 1833)	c, w
<i>Ophiusa trapezium</i> (Guenée, 1852)	f, w	<i>Spodoptera pecten</i> Guenée, 1852	f, w
<i>Ophiusa triphaenoides</i> (Walker, 1858)	f, w	<i>Stenhyphena adustalis</i> (Hampson, 1893)	u, l
<i>Oraesia argyrosigna</i> Moore, [1884] 1884-1887	r, rd	<i>Stictoptera cucullioides</i> Guenée, 1852	s, rd
<i>Oraesia emarginata</i> (Fabricius, 1794)	f, w	<i>Stictoptera trajecens</i> (Walker, [1858] 1857)	r, rd
<i>Oraesia excavata</i> (Butler, 1878)	f, w	<i>Sympis rufibasis</i> Guenée, 1852	c, w
<i>Oruza divisa</i> (Walker, 1862)	c, w	<i>Tamba apicata</i> (Hampson, 1902)	c, l
<i>Oruza</i> sp. nr. <i>crocodeta</i> (Turner, 1903)	s, rd	<i>Targalla subocellata</i> (Walker, [1863] 1864)	u, rd
<i>Othreis fullonia</i> (Clerck, 1764)	f, w	<i>Targalla transversa</i> (Candèze, 1927)	vr, rd
<i>Othreis homaena</i> Hübner, [1823] 1816	f, l	<i>Tephriopsis divulsa</i> (Walker, 1865)	c, w
<i>Othreis hypermnestra</i> (Stoll, 1780)	s, l	<i>Thalatta fasciosa</i> Moore, 1882	s, w
<i>Oxyodes scrobiculata</i> (Fabricius, 1775)	c, w	<i>Thyas junio</i> (Dalman, 1823)	f, w
<i>Ozana chinensis</i> (Leech, 1900)	r, rd	<i>Tinoliulus hypsana</i> Swinhoe, 1889	u, l
<i>Ozarba brunnea</i> (Leech, 1900)	s, l	<i>Tiracola aureata</i> Holloway, 1989	c, w
<i>Pangrapta adusta</i> (Leech, 1900)	f, w	<i>Trachea auriplena</i> (Walker, 1857)	f, w
<i>Pangrapta bicornuta</i> Galsworthy, 1997	endemic; c, l	<i>Trichoplusia intermixta</i> (Warren, 1913)	u, w
<i>Pangrapta obscurata</i> (Butler, 1879)	c, w	<i>Trichoplusia mutans</i> (Walker, 1865)	u, rd
<i>Pangrapta plumbilineata</i> Wileman & West, 1929	f, l	<i>Trichoplusia ni</i> (Hübner, [1803])	u, w
<i>Pangrapta roseinotata</i> Galsworthy, 1997	endemic; c, w	<i>Trigonodes hyppasia</i> (Cramer, 1779)	s, w
<i>Paracolax pryveri</i> (Butler, 1879)	u, l	<i>Tycracrona obliqua</i> Moore, 1882	f, l
<i>Paradiopa postfusca</i> (Hampson, 1893)	c, w	<i>Ugia unsuspecta</i> Galsworthy, 1997	c, w
<i>Parasada carnosa</i> (Hampson, 1893)	s, l	<i>Ugia mediourufa</i> (Hampson, 1894)	f, rd
<i>Pataeta carbo</i> (Guenée, 1852)	s, rd	<i>Ugia purpurea</i> Galsworthy, 1997	endemic; vc, w
<i>Penicillaria jocosatrix</i> Guenée, 1852	u, l	<i>Xanthodes intersepta</i> Guenée, 1852	s, w
<i>Penicillaria maculata</i> Butler, 1889	r, rd	<i>Xanthodes transversa</i> Guenée, 1852	f, w
<i>Pericyma cruegeri</i> (Butler, 1886)	u, w	<i>Yepcalphis dilectissima</i> (Walker, 1858)	s, w
<i>Peridroma saucia</i> (Hübner, [1808])	r, rd	<i>Zonoplusia ochreatea</i> (Walker, 1865)	f, w
<i>Perigea chinensis</i> Wallengren, 1860	u, w	<i>Zurobata vacillans</i> (Walker, 1864)	u, l
<i>Perigea reactivitta</i> Moore, DATE	r, rd		
<i>Pindara illibata</i> (Fabricius, 1775)	f, w	NOLIDAE	
<i>Platyja ciacula</i> Swinhoe, 1893	c, w	<i>Barasa acronyctoides</i> Walker, 1862	f, w
<i>Platyja umminea</i> (Cramer, 1780)	f, l	<i>Blenina quinaria</i> Moore, 1881	f, w
<i>Plecoptera flava</i> (Bremer & Grey, 1853)	f, rd	<i>Blenina senex</i> (Butler, 1878)	f, l
<i>Plecoptera luteiceps</i> (Walker, 1865)	c, w	<i>Calymera confinis</i> (Warren, 1916)	c, w
<i>Plecoptera recta</i> (Pagenstacher, 1886)	f, rd	<i>Carea angulata</i> (Fabricius, 1793)	f, w
<i>Plecoptera reflexa</i> Guenée, 1852	f, rd	<i>Carea varipes</i> Walker, [1857] 1856	c, w
<i>Plusiodonta coelonota</i> (Kollar, 1844)	f, w	<i>Earias cupreoviridis</i> (Walker, 1862)	u, rd
<i>Plusiopalpa adrasta</i> (Felder & Rogenhofer, 1874)	c, w	<i>Earias flavida</i> Felder, 1861	f, w
<i>Polydesma boarmoides</i> Guenée, 1852	s, w	<i>Earias insulana</i> (Boisduval, 1833)	u, rd
<i>Polypogon biasalis</i> (Walker, 1858)	f, w	<i>Earias luteolaria</i> Hampson, 1891	f, rd
<i>Polypogon fractalis</i> (Guenée, 1854)	f, w	<i>Eligma narcissus</i> (Cramer, 1776)	f, w
<i>Progonia oileusalis</i> (Walker, 1858)	c, w	<i>Etanna breviscula</i> (Walker, 1863)	s, rd
<i>Prolophota trigonifera</i> Hampson, 1896	f, w	<i>Evonima aperta</i> Walker, 1865	u, rd
<i>Pseudeustrotia semialba</i> (Hampson, 1894)	c, w	<i>Gadirtha impingens</i> Walker, [1858] 1857	f, w
<i>Pseudogyrtonea perversa</i> (Walker, 1862)	r, rd	<i>Garella ruficirra</i> (Hampson, 1905)	u, rd
<i>Pseudosphetta fisisigna</i> Hampson, 1926	u, w	<i>Giaura multipunctata</i> Swinhoe, 1919	c, l
<i>Pseudosphetta moorei</i> (Cotes & Swinhoe, 1885)	f, rd	<i>Giaura robusta</i> (Moore, 1888)	c, l
<i>Ramadasa pavo</i> (Walker, 1856)	r, rd	<i>Gyrothripa pusilla</i> (Moore, 1888)	s, rd
<i>Rema costimacula</i> (Guenée, 1852)	vc, w	<i>Hylophilodes pseudorientalis</i> Prout, 1921	s, rd
<i>Rhesala imparata</i> Walker, 1858	c, w	<i>Lamprothripa scotia</i> (Hampson, 1902)	f, w
<i>Rhynchaglaea scitula</i> (Butler, 1879)	r, rd	<i>Manoba brunellus</i> (Hampson, 1893)	c, w
<i>Rivula basalis</i> Hampson, 1891	c, w	<i>Manoba izuensis</i> (Inoue, 1961)	s, rd
<i>Rivula costinotata</i> Hampson, 1926	r, rd	<i>Manoba tristicta</i> (Hampson, 1900)	r, rd
<i>Rivula curvifera</i> (Walker, 1862)	s, l	<i>Maurilia iconica</i> (Walker, [1858] 1857)	s, l
<i>Rivula inconspicua</i> (Butler, 1881)	f, w	<i>Meganola</i> sp. A	s, rd
<i>Rivula niveipuncta</i> Swinhoe, 1905	u, l	<i>Meganola triangulalis</i> (Leech, 1888)	s, rd
<i>Rivula ochracea</i> (Moore, 1882)	u, l	<i>Melanographia flexilineata</i> (Hampson, 1898)	c, w
<i>Rivula sasaphila</i> Sugi, 1982	u, l	<i>Negeta signata</i> (Walker, [1863] 1864)	c, w
<i>Rivula striatura</i> Swinhoe, 1895	f, l	<i>Nola analis</i> (Wileman & West, 1928)	f, w
<i>Sarbanissa albifascia</i> (Walker, 1865)	s, rd	<i>Nola lucidalis</i> (Walker, 1864)	c, w
<i>Saroba pustulifera</i> Walker, 1865	c, w	<i>Nola marginata</i> Hampson, 1895	f, w
<i>Sarobides inconclusa</i> (Walker, [1863] 1864)	f, l	<i>Nola pumila</i> Snellen, 1875	c, w
<i>Sasunaga interrupta</i> Warren, 1912	s, rd	<i>Nola</i> sp. A	r, rd
<i>Sasunaga longiplaga</i> Warren, 1912	f, w	<i>Nola</i> sp. C nr. <i>cretacea</i>	f, w
<i>Sasunaga tenebrosa</i> (Moore, 1867)	c, w	<i>Nola</i> sp. D	r, rd
<i>Schistorhynchus argentistriga</i> Hampson, 1898	u, l	<i>Nola</i> sp. E nr. <i>taeniata</i>	r, rd
<i>Schrankia costaestrigalis</i> (Stephens, 1834)	f, w	<i>Nola</i> sp. F	vr, rd
<i>Sclerogenia jessica</i> (Butler, 1878)	r, rd	<i>Nola</i> sp. nr. <i>tornotis</i> (Meyrick, 1877)	s, rd
<i>Serrodos campana</i> Guenée, 1852	f, rd	<i>Nyctea sinuosa</i> (Moore, 1888)	f, rd
<i>Sesamia inferens</i> (Walker, 1856)	r, rd	<i>Paracrama dulcissima</i> (Walker, [1863] 1864)	c, w
<i>Sigmuncus arcuata</i> (Hampson, 1898)	r, rd	<i>Pterogonia episcopalis</i> Swinhoe, 1891	f, l
<i>Simplicia bimarginata</i> Walker, [1863]	f, l	<i>Risoba prominens</i> Moore, 1881	r, l
<i>Simplicia butesalis</i> (Walker [1859])	f, w	<i>Risoba vialis</i> Moore, 1881	r, rd
<i>Simplicia caenusalis</i> (Walker [1859])	c, w	<i>Triorbis annulata</i> (Swinhoe, 1890)	f, w
<i>Simplicia mistacalis</i> (Guenée, 1854)	s, rd		
<i>Simplicia niphona</i> (Butler, 1878)	c, w	NOTODONTIDAE	
<i>Sinarella</i> sp. A / nov. nr. <i>nigrisigna</i>	s, rd	<i>Allata costalis</i> (Moore, 1879)	f, l
<i>Singara diversalis</i> Walker, 1865	c, w	<i>Antiphalera exquisitor</i> Schintlmeister, 1989	c, w

<i>Besaia goergneri</i> Schintlmeister, 1989	s, rd	<i>Endotricha</i> sp. C	u, l
<i>Ceira longipennis</i> (Moore, 1881)	s, l	<i>Endotricha theonalis</i> (Walker, 1859)	f, w
<i>Cerura priapus</i> Schintlmeister, 1997	f, w	<i>Epicrocis hilarella</i> (Ragonot, 1888)	f, w
<i>Chadisra bipartita</i> (Matsumura, 1925)	f, l	<i>Epipaschiini</i> genus & sp. A	dd (r, rd)
<i>Clostera restituta</i> (Walker, 1865)	u, l	<i>Epipaschiini</i> genus & sp. B	dd (r, rd)
<i>Gangarides dharmo</i> Moore, 1865	f, w	<i>Etiella zinckenella</i> (Treitschke, 1832)	f, w
<i>Gargetta divisa</i> Gaede, 1930	c, w	<i>Fujimacia</i> sp. B	s, rd
<i>Higena trichosticha</i> (Hampson, 1897)	s, rd	<i>Galleria mellonella</i> (Linnaeus, 1758)	s, l
<i>Hyperaeschra pallida</i> Butler, 1880	u, rd	Galleriinae genus & sp. C	s, rd
<i>Micromelalopha albifrons</i> Schintlmeister, 1989	s, w	<i>Guastica semilutea</i> Walker, 1863	c, w
<i>Micromelalopha baibarana</i> Matsumura, 1929	c, w	<i>Herculia nigrivitta</i> (Walker, 1863)	f, w
<i>Neodrymonia filix</i> Schintlmeister, 1989	f, l	<i>Hypargyria metalliferella</i> Ragonot, 1888	u, l
<i>Neodrymonia ignicoruscens</i> Galsworthy, 1997	s, l	<i>Hypsopygia mauritialis</i> (Boisduval, 1833)	f, w
<i>Netria viridescens</i> Walker, 1855	c, w	<i>Indomalaya flabellifera</i> (Hampson, 1896)	r, rd
<i>Norracoides basinotata</i> (Wileman, 1910)	f, w	<i>Lamoria adeptella</i> (Walker, 1863)	s, l
<i>Phalera grotei</i> Moore, 1859	c, w	<i>Lista insulalis</i> (Lederer, 1863)	f, w
<i>Phalera torpida</i> Walker, 1865	u, l	<i>Locastra muscosalis</i> (Walker, [1866])	c, w
<i>Porsica curvaria</i> (Hampson, 1892)	u, l	<i>Monoctenocera brachiella</i> Hampson, 1899	r, rd
<i>Porsica punctifascia</i> (Hampson, 1893)	u, w	<i>Morosophycita morosalis</i> (Sallmüller, 1880)	u, l
<i>Stauropus alternus</i> Walker, 1855	f, w	<i>Nephopterix ochribasalis</i> (Hampson, 1896)	c, w
<i>Syntypistis umbrosa</i> Matsumura, 1927	f, l	<i>Ocrasa nonusalis</i> (Walker, 1859)	c, w
<i>Turnaca ernestina</i> (Swinhoe, 1885)	u, w	<i>Orthaga achatina</i> (Butler, 1878)	s, rd
<i>Vaneekia pallidifascia</i> (Hampson, 1892)	f, w	<i>Patna eboricostella</i> Ragonot, 1888	vr, rd
OECOPHORIDAE		<i>Perisseretma endotrichalis</i> Warren, 1895	f, l
<i>Acria ceramitis</i> Meyrick	f, w	Phycitini genus & sp. B	s, rd
<i>Aeolarcha eaphthalma</i> Meyrick, 1931	s, l	Phycitini genus & sp. D	s, w
<i>Comocritis taiwanensis</i> ? Moriuti	dd (r, rd)	Phycitini genus & sp. F	r, rd
<i>Epimactis</i> sp. A	c, w	Phycitini genus & sp. G	r, l
<i>Erotis</i> sp. A	u, l	Phycitini genus & sp. O	r, rd
<i>Hieromantis</i> sp. nr. <i>ephodophora</i> Meyrick, 1897	u, w	Phycitini genus & sp. X	vr, rd
<i>Linoclostis</i> sp. nr. <i>goniotas</i>	s, l	<i>Pyralis pictalis</i> (Curtis, 1834)	c, w (urban)
<i>Neospastis sinensis</i> Bradley	f, l	<i>Quasipuer colon</i> (Christoph, 1881)	u, l
<i>Odites</i> sp. A	c, w	<i>Salma camphorella</i> (de Joannis, 1930)	f, w
Oecophorinae genus & sp. C	c, w	<i>Salma nubilalis</i> (Hampson, 1893)	f, rd
<i>Periacma</i> sp. A	dd	<i>Salma</i> sp. A	u, rd
<i>Periacma</i> sp. nr. <i>orthiodes</i> Meyrick, 1894	f, w	<i>Salma</i> sp. B	s, rd
<i>Promolactis</i> sp. A	u, w	<i>Salma</i> sp. nr. <i>melanobasis</i> (Hampson, 1906)	u, l
<i>Promolactis suzukiella</i> (Matsumura)	s, w	<i>Spatulipalpa effosella</i> Ragonot, 1893	u, l
<i>Ripeacma</i> sp. nr. <i>changmaiensis</i>		<i>Spatulipalpa haemaphoralis</i> Hampson, 1908	u, l
Moriuti, Saito & Lewvanich, 1985	u, rd	<i>Stemmatophora flavicaput</i> Shibuya, 1928	f, w
<i>Stathmopoda</i> sp. A	u, w	<i>Tamraca torridalis</i> (Lederer, 1863)	u, l
<i>Stathmopoda</i> sp. B	dd (r, rd)	<i>Tanyethira duplicilinea</i> (Hampson, 1893)	u, l
<i>Stathmopoda stimulata</i> Meyrick	c, w	<i>Tirathaba rutilinea</i> Walker	r, l
<i>Stathmopoda xanthomochla</i> Meyrick	u, w	<i>Volobilis biplaga</i> Walker, 1863	f, l
Xyloryctinae genus & sp. C	dd (f, w)	SATURNIIDAE	
OPOSTEGIDAE		<i>Actias heterogyna</i> Mell, 1914	f, l
Opostegidae genus & sp. A	dd (r, rd)	<i>Actias selene</i> (Hübner, [1802])	c, w
PLUTELLIDAE		<i>Attacus atlas</i> Linnaeus, 1758	u, w
<i>Plutella sera</i> Meyrick, 1886	s, rd	<i>Loepa sikkima</i> (Moore, 1865)	f, l
<i>Plutella xylostella</i> (Linnaeus, 1758)	c, w	<i>Samia cynthia</i> (Drury, [1773])	f, w
PSYCHIDAE		SESIIDAE	
<i>Eumeta variegata</i> Snellen	c, w	<i>Nokona pernix</i> (Leech, 1889)	dd (r, rd)
<i>Kophene</i> sp. A	s, l	SPHINGIDAE	
Psychidae genus & sp. A	s, l	<i>Acherontia lachesis</i> (Fabricius, 1798)	f, w
PTEROPHORIDAE		<i>Acherontia styx</i> (Westwood, 1847)	s, w
<i>Ochryotica</i> sp. nr. <i>concurra</i> Walsingham, 1891	dd (c, l)	<i>Acosmeryx castanea</i> Rothschild & Jordan, 1903	c, w
<i>Pterophorus</i> sp. A	u, l	<i>Acosmeryx sericeus</i> (Walker, 1856)	f, w
PYRALIDAE		<i>Acosmeryx shervillii</i> Boisduval, [1875]	f, w
<i>Arctiolepis rubida</i> Felder, 1862	f, w	<i>Agrius convolvuli</i> (Linnaeus, 1758)	f, w
<i>Assara</i> sp. A	u, l	<i>Ambulyx liturata</i> Butler, 1875	s, rd
<i>Aurana actiosella</i> Walker, 1863	u, l	<i>Ambulyx ochracea</i> Butler, 1885	s, l
<i>Bostra indicator</i> (Walker, 1863)	f, w	<i>Ambulyx sericeipennis</i> Butler, 1875	u, w
<i>Calguia hapalanthes</i> (Meyrick, 1932)	s, rd	<i>Amplypterus panopus</i> (Cramer, 1779)	f, w
<i>Catamola funerea</i> (Walker, 1863)	r, rd (acc. intr.)	<i>Angonyx testacea</i> (Walker, 1856)	c, w
<i>Ceroprepes pluvillella</i> (Zeller, 1867)	c, w	<i>Cechenena aegrota</i> (Butler, 1875)	c, w
<i>Cleothrix swinhoeella</i> (Ragonot, 1893)	u, rd	<i>Cephonodes hylas</i> (Linnaeus, 1771)	u, w
<i>Didia</i> sp. C	r, rd	<i>Clanis bilineata</i> (Walker, 1866)	f, w
<i>Didia</i> sp. nr. <i>indra</i> Roesler & Küppers, 1981	r, rd	<i>Cypoides chinensis</i> (Rothschild & Jordan, 1903)	f, rd
<i>Didia strigivenella</i> (Hampson, 1899)	u, rd	<i>Dahria rubiginosa</i> Moore, 1888	u, l
<i>Dioryctria rubella</i> Hampson, 1901	u, w	<i>Daphnis hypothous</i> (Cramer, 1780)	s, l
<i>Dioryctria sylvestrella</i> (Ratzeburg, 1840)	r, rd	<i>Daphnis nerii</i> (Linnaeus, 1758)	u, w
<i>Doloessa</i> sp. A	u, w	<i>Enpinanga assamensis</i> (Walker, 1856)	f, w
<i>Doloessa viridis</i> Zeller, 1848	c, w	<i>Eupanacra busiris</i> (Walker, 1856)	s, l
<i>Emmalocera neesimella</i> (Ragonot, 1901)	u, w	<i>Eupanacra mydon</i> (Walker, 1856)	c, w
<i>Endotricha consocia</i> Butler, 1879	c, w	<i>Hayesiania triopus</i> (Westwood, 1847)	s, rd
<i>Endotricha mintialis</i> (Fabricius, 1794)	c, w	<i>Hippotion rafflesii</i> (Moore, [1858])	u, w
<i>Endotricha</i> sp. A	r, rd	<i>Hippotion rosetta</i> (Swinhoe, 1892)	c, w
		<i>Leucophlebia lineata</i> Westwood, 1847	s, w
		<i>Macroglossum corythus</i> Walker, 1856	c, w
		<i>Macroglossum fritzei</i> Rothschild & Jordan, 1903	vc, w

<i>Macroglossum heliophila</i> Boisduval, [1875]	c, w	<i>Homona eductana</i> Walker	c, w
<i>Macroglossum insipida</i> Butler, 1875	s, l	<i>Homona tabescens</i> Meyrick	f, w
<i>Macroglossum mitchelli</i> Boisduval, [1875]	r, rd	<i>Lobesia aeolopa</i> Meyrick, 1907	c, w
<i>Macroglossum passalus</i> (Drury, 1773)	u, l	<i>Lobesia</i> sp. B	dd (r, rd)
<i>Marumba dyras</i> (Walker, 1856)	vc, w	<i>Loboschiza koenigana</i> (Fabricius, 1775)	f, w
<i>Pergesa acteus</i> (Cramer, 1779)	u, w	<i>Meridemis furtiva</i> Diakonoff, 1976	c, w
<i>Polyptychus trilineatus</i> Moore, 1888	s, l	<i>Neocalyptis affinisana</i> (Walker, 1863)	c, w
<i>Psilogamma increta</i> (Walker, [1865])	u, w	<i>Neocalyptis lirata</i> (Christoph, 1881)	f, w
<i>Rhagastis albomarginatus</i> (Rothschild, 1894)	f, l	Olethreutinae gen. & sp. E	s, rd
<i>Sataspes tagalica</i> Boisduval, [1875]	u, w	Olethreutinae gen. & sp. S	dd (r, rd)
<i>Theretra clotho</i> (Drury, 1773)	c, w	<i>Ophiorrhabda cellifera</i> (Meyrick, 1912)	s, w
<i>Theretra latreillii</i> Macleay, 1826	f, w	<i>Ophiorrhabda mormopa</i> (Meyrick, 1906)	u, l
<i>Theretra nessus</i> (Drury, 1773)	c, w	<i>Phaecasiophora leechi</i> Diakonoff	c, w
<i>Theretra pallicosta</i> (Walker, 1856)	u, w	<i>Phaecasiophora</i> sp. A	u, w
		<i>Phaecasiophora</i> sp. nr. <i>cornigera</i> Diakonoff, 1959	f, l
THYRIDIDAE		<i>Phricanthes flexilineana</i> (Walker, 1863)	c, w
<i>Calindoea argentalis</i> (Walker, 1866)	s, l	<i>Pseudacroclita hapalsapis</i> (Meyrick, 1931)	u, w
<i>Herdonia hainanensis</i> Inoue, 1993	f, w	<i>Retinia cristata</i> (Walsingham, 1900)	u, w
<i>Hypolamprus</i> sp. nr. <i>emblicalis</i> (Moore, 1888)	f, w	<i>Sorolopha archimedi</i> (Meyrick, 1912)	f, w
<i>Microbelia canidentalis</i> (Swinhoe, 1906)	u, l	<i>Sorolopha</i> sp. A	u, l
<i>Microbelia intimalis</i> (Moore, 1888)	u, rd	<i>Spilonota mortuana</i> (Walker, 1863)	f, w
<i>Pyrinioides sinuosus</i> (Warren, 1896)	u, l	<i>Statherotis discana</i> (Felder & Rogenhofer, 1874)	u, w
		URANIIDAE	
TINEIDAE		<i>Dysaethria fulvhamata</i> (Hampson, 1912)	r, rd
<i>Edosa</i> sp. B	u, l	<i>Dysaethria moza</i> (Butler, 1878)	r, rd
<i>Edosa</i> sp. C	u, w	<i>Lyssa zampa</i> Butler, 1869	c, w
<i>Erechthias atririvis</i> (Meyrick, 1931)	s, l	<i>Micronia aculeata</i> Guenée, 1857	f, w
<i>Monopis monachella</i> (Hübner, 1796)	s, rd	<i>Monobolodes prunaria</i> (Moore, 1887)	r, rd
<i>Opogona</i> sp. A	dd (r, rd)	<i>Phazaca leucocera</i> (Hampson, 1891)	c, w
<i>Opogona</i> sp. nr. <i>trigonomis</i> Meyrick, 1907	dd (r, rd)	<i>Phazaca theclata</i> (Guenée, 1852)	s, l
<i>Pyloetis mimosae</i> (Stainton, 1859)	f, w	<i>Warrenioplema fumicosta</i> (Warren, 1896)	s, rd
Tineidae genus & sp. C	dd (r, rd)		
		YPONOMEUTIDAE	
TORTRICIDAE		<i>Argyresthia</i> sp. B	dd (r, rd)
<i>Adoxophyes privatana</i> (Walker, 1863)	c, w	<i>Saridoscelis sphenias</i> Meyrick, 1894	r, rd
<i>Arcesis threnodes</i> (Meyrick, 1905)	s, l	<i>Teinoptila</i> sp. A nr. <i>brunnescens</i> (Moore, 1888)	vr, rd
<i>Bactra venosana</i> (Zeller, 1847)	dd (r, rd)	<i>Thecobathra sororiata?</i> Moriuti, 1971	c, w
<i>Cnesteboda celligera</i> Meyrick	s, l		
<i>Cryptasasma helota</i> (Meyrick, 1905)	f, w	ZYGAENIDAE	
<i>Cryptophlebia ombrodelta</i> (Lower, 1898)	c, w	<i>Cyclosia panthona</i> (Stoll, 1781)	c, w
<i>Cryptophlebia repletana</i> (Walker, 1863)	c, w	<i>Cyclosia papilionaris</i> (Drury, 1773)	c, w
<i>Cydia molesta</i> (Busck, 1916)	c, w	<i>Erasmia pulchella</i> Hope, 1841	dd (r, rd)
<i>Cydia seclusana</i> Walker	dd (vr, rd)	<i>Eterusia aede</i> (Clerck, 1759)	c, w
<i>Cydia</i> sp. A	dd (r, rd)	<i>Gynaetocera papilionaria</i> Guérin-Ménéville, 1830	u?, w
<i>Dudua aprobola</i> (Meyrick, 1886)	c, w	<i>Histia flabellicornis</i> (Fabricius, 1775)	c, w
<i>Dudua ultima</i> Diakonoff	s, rd	<i>Hysteroscene</i> sp. A / nov.	r, rd
<i>Endothenia</i> sp. nr. <i>nigricostana</i> (Haworth, 1811)	s, w	<i>Illiberis dirce</i> Leech, 1889	vr, rd
<i>Epinotia blanda</i> Kawabe, 1989	r, rd	<i>Illiberis nigrigemma</i> Walker, 1854	u, l
Eucosmini gen. & sp. A	dd (vr, rd)	<i>Trypanophora semihyalina</i> Kollar	u, w
<i>Gatesclarkeana idia</i> Diakonoff, 1973	s, w		
<i>Homona coffearia</i> (Neitner, 1861)	c, w		

Note: species listed as **dd** (data deficient) with status and distribution given in brackets indicates a species which is probably under-recorded.

9.2 Raw Data

This appendix lists the raw data collected at each moth-recording event (see Table 4.2) undertaken at KFBG reported herein. In most cases, the data include the site name, the weather at the start and finish of the recording event, the ground conditions, the recording method and the species recorded with the abundance of each species. Some events did not record species abundance, only presence, which is denoted by a '0'.

The data are presented in the form of a table, with the left column and top two rows repeated on all pages of the table. The table pagination reads across then down, with species names occurring only on the first column of pages, and with the species thereafter represented by a number on the left column. The bottom rows of each column contain data on recording method, conditions, numbers of individuals, species and calculated diversity for each recording event.

species no.	Kwun Yum Shan summit (KF-KYS)									Misha's Bungalow (KF-MB)					KF-MG		Site Totals						KFBG Total					
	04/03/1999	10/04/1999	12/05/1999	26/06/1999	17/07/1999	18/08/1999	05/10/1999	24/11/1999	17/06/2001	06/09/2001	12/04/2003	03/06/2003	11/08/2001	23/08/2003	12/09/2003	25/10/2003	22/11/2003	27/03/2004	15/06/2001	17/06/2001	01/09/2001	KF-BG		KFBG	KF-IH	KF-KYS	KF-MB	KF-MG
0001							3															0			3			3
0002																							2					2
0003	0			0												1						7		1	0	1		9
0004	0		0		0	1	6	17		3	1				2			2				64		1	28	4	97	
0005							1															4			1		5	
0006				0																		1			0		1	
0007			0			3					6											8			9		17	
0008						2																0			2		2	
0009																						6					6	
0010											2											22		1	2		25	
0011											3											2			3		5	
0012										1												0			1		1	
0013						2				1	1							1				14		2	4	1	21	
0014		0																				6			0		6	
0015																		1				5				1	6	
0016	0					1	2	2														0			5		5	
0017																						10					10	
0018								2														2			2		4	
0019		0				2	1				1											4		2	4		10	
0020		0				1				1									1			12		2	2		17	
0021							1															0			1		1	
0022																						0					2	
0023																						7		2			7	
0024										30	40							3				109		24	70	3	206	
0025											2											3			2		5	
0026												1										12				1	13	
0027																						0					0	
0028								1			1											1	1		2		4	
0029						2	1	1			1											4		1	5		10	
0030			1																			1			1		2	
0031						1																1			1		2	
0032			0																			1		1	0		2	
0033				0	0																	3		1	0		4	
0034																						2					2	
0035	0		0			2		3			3				1		2				28		4	8	3		43	
0036																						1					1	
0037																	1					5				1	6	
0038																						2					2	
0039																						2					2	
0040			0		0					1	1											0			2		2	
0041			0								1											2			1		3	
0042																						1					1	
0043			0	0			4	2			2				2		1				10			8	3		21	
0044						1																2			1		3	
0045		0	0				3	6			1	2			12		54				78			12	66		156	
0046	0																1				0				1		1	
0047																						1					1	
0048																						23					23	
0049											1											1					2	
0050	0																					0			0		0	
0051																		1				2				1	3	
0052																						1					2	
0053																						3			1		6	
0054				0		1																2			2		4	
0055																						2					6	
0056																		1				3			1		6	
0057						1																0			1		1	

species no.	Kwun Yum Shan summit (KF-KYS)								Misha's Bungalow (KF-MB)				KF-MG			Site Totals						KFBG Total							
	04/03/1999	10/04/1999	12/05/1999	26/06/1999	17/07/1999	18/08/1999	05/10/1999	24/11/1999	17/06/2001	06/09/2001	12/04/2003	03/06/2003	11/08/2001	23/08/2003	12/09/2003	25/10/2003	22/11/2003	27/03/2004	15/06/2001	17/06/2001	01/09/2001		KF-BG	KFBG	KF-IH	KF-KYS	KF-MB	KF-MG	
0058																						1						1	
0059											1			1									6			1	1		8
0060					0									1									18		1	0	1		20
0061												11											13			11		24	
0062																							4					4	
0063												30				2	2						26		14	30	4	74	
0064											2	15											3			17		20	
0065																1							5				1	6	
0066																							1					1	
0067	0																						2			0		2	
0068		0	0									2											8			4		12	
0069																							3					3	
0070												1											0			1		1	
0071																							2					2	
0072												1											20		1	1		22	
0073						4	4	6															5			14		19	
0074		0																					23		1	0		24	
0075											1	1				1							4				1	7	
0076	0	0	0					1	6														11					18	
0077	0		0			2	3	2				2			1								9			9	1	19	
0078																							0					0	
0079																							3					3	
0080										1	2					1							22		1	3	1	27	
0081	0					2		1															10			3		13	
0082						1								1		1							6			1	2	9	
0083							3					15				2							13		2	18	6	39	
0084												2			1								12			2	1	15	
0085																							2					2	
0086																							1				1	2	
0087												2											5		3	2		10	
0088																							1					1	
0089																							0					0	
0090																							1					1	
0091																							1					1	
0092												2				1							4		1	2	1	8	
0093																							4					4	
0094			0				1	1				3				1							5		1	5	1	12	
0095			0	0	0		3	1	1														7		1	5		13	
0096																							4					4	
0097																							2					2	
0098																							1					1	
0099	0			0			1					2			1	1							24		1	3	2	30	
0100														1									18				1	19	
0101			0	0		0			1			1											13				1	16	
0102			0	0								2											79			4		83	
0103							5	1	1			2											60		2	9		71	
0104												1											11			1		12	
0105																							2					2	
0106																5							2			5		7	
0107	0			0																			1			5		6	
0108																							2					2	
0109																							1					1	
0110	0	0	0	0	0		1	1	1							2							7		4	3	8	22	
0111	0	0	0	0	0		2	1								1							39			3	17	59	
0112	0		0	0	0		2	1							3								29		8	8	5	50	
0113																							0					0	
0114	0															1							6					7	

species no.	Kwun Yum Shan summit (KF-KYS)										Misha's Bungalow (KF-MB)					KF-MG			Site Totals						KFBG Total			
	04/03/1999	10/04/1999	12/05/1999	26/06/1999	17/07/1999	18/08/1999	05/10/1999	24/11/1999	17/06/2001	06/09/2001	12/04/2003	03/06/2003	11/08/2001	23/08/2003	12/09/2003	25/10/2003	22/11/2003	27/03/2004	15/06/2001	17/06/2001	01/09/2001	KF-BG	KFBG	KF-IH		KF-KYS	KF-MB	KF-MG
0172																						2						2
0173						1	1						1									1			2	1		4
0174															2								3			2		5
0175				0			3			2												48		1	5			54
0176				0		8	2							3								11			10	3	24	
0177	0					2																1		1	2		4	
0178				0																		0			0		0	
0179																						0					0	
0180																						1					1	
0181																						4					4	
0182																						1					1	
0183	0	0	0	0	0	4		5		4												22			13		35	
0184						5																2			5		7	
0185	0	0	0	0	0	1	3	1		4	20			3	1	1	3					48		7	29	8	92	
0186																						6					6	
0187						4									2							8			4	2	14	
0188																						0					0	
0189				0				3														18			3		21	
0190								1														26			1		27	
0191				0						1												0					1	
0192	0																					21					21	
0193																						1					1	
0194						1	3								1							7			4	1	12	
0195											9											23			9		32	
0196																						2					2	
0197	0	0	0			1		1		1	2				1						10			5	1	16		
0198																						1					1	
0199	0	0	0	0	0	19	2	5		3	2					1	13				76		5	31	14	126		
0200			0							3												1			3		4	
0201							2															9			2		11	
0202														1		1						7		2		2	11	
0203				0				1			2				3	4	1					14		2	3	8	27	
0204		0								1												4			1		5	
0205			0							2	2											8			4		12	
0206																						1					1	
0207						2																0			2		2	
0208						7																0			7		7	
0209			0	0		1	2								1							7		2	3	1	13	
0210																						2					2	
0211	0					1	1										1					17			2	1	20	
0212								3														1			3		4	
0213										1												0			1		1	
0214								1														14			1	1	16	
0215										2												3			2		5	
0216					0																	7			0		7	
0217																						2					2	
0218																1						1				1	2	
0219			0			1				1	2											3		1	4		8	
0220			0			1																1			1		2	
0221				0																		1			0		1	
0222	0		0	0	0	1	4			15							14					31		1	20	14	66	
0223																						1					1	
0224								1														0				1	1	
0225										1												0			1		1	
0226											4											4			4		8	
0227							2															1			3		8	
0228											1				1								21			3		25

species no.	Kwun Yum Shan summit (KF-KYS)								Misha's Bungalow (KF-MB)					KF-MG			Site Totals						KFBG Total					
	04/03/1999	10/04/1999	12/05/1999	26/06/1999	17/07/1999	18/08/1999	05/10/1999	24/11/1999	17/06/2001	06/09/2001	12/04/2003	03/06/2003	11/08/2001	23/08/2003	12/09/2003	25/10/2003	22/11/2003	27/03/2004	15/06/2001	17/06/2001	01/09/2001	KF-BG		KFBG	KF-IH	KF-KYS	KF-MB	KF-MG
0229							1	1														0			2			2
0230						2																0			2			2
0231	0				0			9		1												3			10			13
0232	0	0	0	0	0	4	6	48		1	15			1				2				34			74	3	111	
0233			0															3				0			0	3	3	
0234										2												2			2			4
0235											1											4			1			5
0236											2											7			2			9
0237			0	0																		13			0			13
0238	0	0	0	0	0	1	1	11		2	3				2			2				56		19	18	4	97	
0239								1		1	1							6				23		1	3	6	33	
0240										1												14						14
0241	0									1												6		1	2		9	
0242	0			0	0	3					5											3		2	8		13	
0243								2										1				2			2	1	5	
0244							2				2		1	1								122		3	4	2	131	
0245																						1					1	
0246	0										2							4				5			2	4	11	
0247																						2					2	
0248			0			1					2				2			1				15		2	3	3	23	
0249							1				1											6			2		8	
0250																						1					1	
0251																						1					1	
0252	0							2			2			1								5		4	1		10	
0253	0	0		0	0	1	1	10		1	3		1		9							104		3	16	10	133	
0254	0	0				1	4	6										1				30			11	1	42	
0255																						3				1	4	
0256										6												40			6		46	
0257							1															2			1		3	
0258				0		1									2							7			1	2	10	
0259																						2					2	
0260	0		0	0	0	4				3	2		2		1						17		1	9	3	30		
0261	0									2	1											9		1	3		13	
0262																						3					3	
0263				0			1	2		2	2							1				16		2	7	1	26	
0264										1												1			1		2	
0265										1												1			1		2	
0266															3							6		1		3	10	
0267																						6					6	
0268										1												13		15			28	
0269			0	0		2		1		1												0			4		4	
0270				0			2	1			3			1	1		1					17	1	2	6	3	29	
0271	0				0	1	1				3				1							19			5	1	25	
0272	0				0	1	1										1					10			2	1	13	
0273											2											1			2		3	
0274						5				1	2				1							4			8	1	13	
0275					0					3	10											0		3	13		16	
0276											20											18		3	20	2	43	
0277					0		2				3			2								16		3	5		24	
0278		0									6			1	1							6		3	6	2	14	
0279	0	0			0	1	2				5		1		1							40		4	8	1	53	
0280													1		5							1			1	6	8	
0281						1				3					1			1				6		5	4	2	17	
0282						1																16			1		17	
0283																						2		3		1	6	
0284										3												0			3		3	
0285						7					6											10		1	13		24	

species no.	Kwun Yum Shan summit (KF-KYS)								Misha's Bungalow (KF-MB)					KF-MG		Site Totals						KFBG Total							
	04/03/1999	10/04/1999	12/05/1999	26/06/1999	17/07/1999	18/08/1999	05/10/1999	24/11/1999	17/06/2001	06/09/2001	12/04/2003	03/06/2003	11/08/2001	23/08/2003	12/09/2003	25/10/2003	22/11/2003	27/03/2004	15/06/2001	17/06/2001	01/09/2001		KF-BG	KFBG	KF-IH	KF-KYS	KF-MB	KF-MG	
0286																			1			0					1	1	
0287																						8						8	8
0288											3											0			3			3	3
0289																						1						1	1
0290																						1						1	1
0291																						5						5	5
0292																						1						1	1
0293	0	0	0			2				2	15						4					5		1	19	4		29	29
0294																						18		5				23	23
0295								1														3			1			4	4
0296																						1						1	1
0297										1												0			1			1	1
0298								1														2			1			3	3
0299	0					3	1	4		5	9			2	1							36	1	12	22	3		74	74
0300	0																					16		1	2	2		21	21
0301						1	1										2					2			2			4	4
0302	0	0																				0			0			0	0
0303						2													1			7		1	6		1	15	15
0304	0																					27			1			28	28
0305		0	0							3							4					11			3	4		18	18
0306	0																					10			0			10	10
0307											1											0			1			1	1
0308																						2						2	2
0309																						5		1				6	6
0310											1											2			1			3	3
0311																						7						7	7
0312																						4						4	4
0313																						1						1	1
0314																						3		1				4	4
0315										1						2						3			1	2		6	6
0316																						2						2	2
0317																						3						3	3
0318											1											2			1			3	3
0319				0		1	1				3	3			1							27		1	8	1		37	37
0320								2									5					14		1	2	5		22	22
0321								1			1											0			2			2	2
0322			0																			2			1			3	3
0323						1																6			1			7	7
0324	0						1															1			1			2	2
0325																1						0				1		1	1
0326																1	2					1			3			4	4
0327													1									1			1			2	2
0328						1								1								6			1	1		8	8
0329			0	0	0		1				8											27		2	9			38	38
0330																						2						2	2
0331																						1						1	1
0332																						4						4	4
0333																						4						4	4
0334											1											7			1			8	8
0335																						1						1	1
0336											2											4			2			6	6
0337																						2						3	3
0338																						6			1			7	7
0339																						0						0	0
0340											1					3						20			3	3		26	26
0341			0					1			2											0			1			1	1
0342	0							11	22								1					2			33	1		36	36

species no.	Kwun Yum Shan summit (KF-KYS)										Misha's Bungalow (KF-MB)				KF-MG		Site Totals						KFBG Total					
	04/03/1999	10/04/1999	12/05/1999	26/06/1999	17/07/1999	18/08/1999	05/10/1999	24/11/1999	17/06/2001	06/09/2001	12/04/2003	03/06/2003	11/08/2001	23/08/2003	12/09/2003	25/10/2003	22/11/2003	27/03/2004	15/06/2001	17/06/2001	01/09/2001	KF-BG		KFBG	KF-IH	KF-KYS	KF-MB	KF-MG
0343	0										2											7						9
0344							2	8			4					3						29			14	3		46
0345											1											2			1			3
0346										1	1											1			2			3
0347																						5						5
0348			0	0	0	36		4			9											0			49		49	
0349											4											0			4			4
0350	0	0						3			1											3			4		7	
0351																		1				2				1	3	
0352					0						1			1								8			1	1		10
0353					0							3			1							5			3	1		9
0354																						0				1		1
0355																						8						8
0356																						1						1
0357											1											0			1			1
0358											3											5			3			8
0359	0			0		13		1			1			1	1							55			15	4		74
0360															1							5				1		6
0361	0		0	0	0	99	14	9			2			1	1							16			124	2		142
0362																						1			1			2
0363												8			4							2				4		6
0364				0		2				2	8				3							18			3	12	3	36
0365						1																2			1			3
0366										2												1			2			3
0367											2				2	1						8			2	3		15
0368																						0			1			1
0369			0	0							4				1							5			1	4	1	11
0370	0																					3			1			3
0371																						3						3
0372																						11						11
0373																						1						1
0374																						2						2
0375																						1						1
0376																						2						2
0377							6															0			6			6
0378	0	0		0		1				14	20											40			9	35		84
0379											1											0						1
0380																						0						0
0381	0																					0						0
0382																						0						1
0383						4	8	10			8				4	3						47			1	8	2	89
0384	0		0																			1			2	30		1
0385	0					1																7			1			8
0386																						1						1
0387	0	0	0	0			1															2			1			3
0388								3														11			3			14
0389																						1						1
0390											2					1						1					1	4
0391			0			1	4	16							2							16			21			39
0392	0			0	0	1	2	15			8				6	11	1	1				95			26	19		140
0393																						2						3
0394																						6						6
0395	0							2			5											16			7			23
0396						3																0			3			3
0397											4											2						9
0398		0											1									7			1	2		11
0399	0				0			3							8							7			1	3	8	19

species no.	Kwun Yum Shan summit (KF-KYS)										Misha's Bungalow (KF-MB)					KF-MG			Site Totals						KFBG Total			
	04/03/1999	10/04/1999	12/05/1999	26/06/1999	17/07/1999	18/08/1999	05/10/1999	24/11/1999	17/06/2001	06/09/2001	12/04/2003	03/06/2003	11/08/2001	23/08/2003	12/09/2003	25/10/2003	22/11/2003	27/03/2004	15/06/2001	17/06/2001	01/09/2001	KF-BG	KFBG	KF-IH		KF-KYS	KF-MB	KF-MG
0457											1											5						6
0458										2												1						3
0459																						9						9
0460																						5						7
0461	0						2	2							2							56				2		60
0462						1					3											16			4			20
0463																						1						1
0464																						1						1
0465																						2	1					3
0466																						1						1
0467																						3						3
0468								1														4			1			5
0469	0								1						1							4			1			5
0470																						4						1
0471						1											1					4			1			5
0472																						2		1				3
0473			0																			0			0			0
0474																						21						21
0475																						1						1
0476																						1						1
0477																						1		1				2
0478	0		0	0	0	109	12	51			2	15		1	3	1	3				45		3	189	8		245	
0479																						7						9
0480																						0	1					1
0481																						5						5
0482																						3						3
0483											2					1						11			2	1		14
0484												2										3			2			5
0485																						3						3
0486																						3						3
0487																						1						1
0488			0	0		0										5		11				19		3	1	16		39
0489			0									1				3		1				2			4		7	
0490	0		0				1					8										7					16	
0491	0							3	2													3			5		8	
0492	0	0			0		1					15				2	1					19		4	16	3	42	
0493																						1						1
0494	0			0	0	1400	68	64	1000						3	7						1086			2535	10	3631	
0495												1										0						1
0496																						1						1
0497			0					2				1										0			5			5
0498																						0			1			1
0499																						4						5
0500								1								1						24	1			1		30
0501																						33			3			39
0502				0	0																	48		1	0	1		50
0503				0																		0			2			2
0504			0		0	3	2	1														9			8		17	
0505				0																		1			0			1
0506						1		1														5			2			7
0507																	1					0				1		3
0508																						2						2
0509																2						3				2		5
0510			0					2								1						2			3	2		7
0511																				5		2						8
0512					0																	16		1	4	4		24
0513								1								1						88		47	56	1		192

species no.	Kwun Yum Shan summit (KF-KYS)									Misha's Bungalow (KF-MB)					KF-MG			Site Totals						KFBG Total					
	04/03/1999	10/04/1999	12/05/1999	26/06/1999	17/07/1999	18/08/1999	05/10/1999	24/11/1999	17/06/2001	06/09/2001	12/04/2003	03/06/2003	11/08/2001	23/08/2003	12/09/2003	25/10/2003	22/11/2003	27/03/2004	15/06/2001	17/06/2001	01/09/2001	KF-BG	KFBG		KF-IH	KF-KYS	KF-MB	KF-MG	
0514	0				0			1				4				1						0					1		6
0515																						7						1	8
0516																						5							5
0517			0																			0							0
0518										1						1						3				1			5
0519						0	1															2							3
0520	0		0	0							20						1	1				27				20	2		49
0521						0	1				4	3			4	1						7			3	8	5		23
0522	0	0	0	0	0	0	1															23					1		25
0523												2			1							1			1	2	1		5
0524				0																		2				0			2
0525				0													1					2				0	1		3
0526					0			1														3			1	1			5
0527												6										13				6			19
0528														2								3					2		5
0529																						7							7
0530																						1							1
0531																						2							2
0532							1															3							5
0533																						2							2
0534	0	0	0			2		6			1	3										18				12			30
0535												1										3			1				5
0536																						4			1				5
0537															1							0					1		1
0538								1														0				1			1
0539																						4							4
0540												1										3				1			4
0541																						2							2
0542																						1							1
0543												1										0				1			1
0544	0			0																		2				0			2
0545	0										2											17			1	2	2		22
0546																						4							4
0547	0	0	0	0	0	3	5	10			2	2		4		5					8				22	9		39	
0548	0	0	0	0	0	27		1			1	7		7	3	1					19			1	36	11		67	
0549					0									1								2					1		3
0550																						1							2
0551											1	7										27			1	8	3		39
0552					0			1														8			2	1			11
0553				0	0		4				2	20										76			1	26	6		109
0554												1										2				1			3
0555																						11							11
0556			0																			0				0			0
0557				0								2										34				2			36
0558	0		0				4	4			2	3			4	2					122			4	13	6		145	
0559			0		0	2	3	14				1		2	2						13				20	4		37	
0560				0																		4				1			5
0561																						3							3
0562																						1							1
0563	0	0		0	0	5	27	1			3	3			1	1	1				34			3	39	3		79	
0564	0	0					1				2	6			1							17			1	10	1		29
0565				0	0	0	1															0				1			1
0566							1					2			2							3			5	4	2		14
0567				0								2			1							7				2	1		10
0568	0	0	0	0											1							5				0	1		6
0569	0			0													1					5				2	1		8
0570																						1							3

species no.	Kwun Yum Shan summit (KF-KYS)										Misha's Bungalow (KF-MB)					KF-MG			Site Totals						KFBG Total			
	04/03/1999	10/04/1999	12/05/1999	26/06/1999	17/07/1999	18/08/1999	05/10/1999	24/11/1999	17/06/2001	06/09/2001	12/04/2003	03/06/2003	11/08/2001	23/08/2003	12/09/2003	25/10/2003	22/11/2003	27/03/2004	15/06/2001	17/06/2001	01/09/2001	KF-BG	KFBG	KF-IH		KF-KYS	KF-MB	KF-MG
0571											2											1			2			4
0572																							3					3
0573							2				2												12		2	4		18
0574											1												0			1		1
0575			0																				0			0		0
0576	0																						0			0		0
0577			0								7												4		2	7		13
0578																							3			0		3
0579				0	0										1								1			0		1
0580																							0				1	1
0581							1	1			1	1											20		4			24
0582											2												2		3			5
0583																							4					4
0584																							7					7
0585								2															0		2			2
0586			0				1				1												36		2			38
0587	0						1	1			2				4		6						60		2	4	10	76
0588	0		0				1	1			3				1		1						16		1	5	2	24
0589											1												0					2
0590																							6					9
0591																							1					1
0592											3							1					14		1	3	1	19
0593																							1					1
0594				0				2			3												1		2	5		8
0595															2								1			2		3
0596											4												1		1			6
0597																							0					0
0598											7						1						9		4	7	1	21
0599			0	0			1	9			2			1		1	1						15		13	1		29
0600																							2			2		4
0601																							2					2
0602																							5		1			6
0603																							1					1
0604																							0		1			1
0605																							5		1			6
0606											2					2							10			2	2	14
0607																							1					1
0608								1															0			1		1
0609							1																0			1		1
0610											45												56		18	45		119
0611											1												5			1		6
0612				0	0		1																1		1			6
0613															2								1				2	3
0614																							1					1
0615			0	0	0	0					3	70				1							12		3	73	1	89
0616											3												9		1	3		13
0617								1															0			1		1
0618							2																13		1	2		16
0619																							5					5
0620	0		0	0			3		7		2	6										6			18		24	
0621						0	2	1	1			1			1		1						39		2	5	2	48
0622						0	20	2	19			1		2	15	2							12		1	42	19	74
0623																							1					1
0624				0								2											14			2		16
0625	0			0	0	5	3	9			2	7		1	3	2	1	2					52	1		26	9	88
0626					0	2						14											32			16		49
0627						2	1								5								12			3	5	20

species no.	Butterfly Garden (KF-BG)							Conservation Building (KFBG-Cons)														Insect House (KF-IH)																	
	24/06/2003	15/07/2003	04/08/2003	12/09/2003	20/09/2003	25/10/2003	22/11/2003	28/02/2004	27/03/2004	12/02/2001	19/04/2001	19/06/2001	03/07/2001	11/08/2001	16/08/2001	22/08/2001	30/08/2001	01/09/2001	13/12/2001	17/12/2001	19/12/2001	11/03/2003	04/04/2003	18/11/2003	25/02/2004	17/03/2004	23/03/2004	20/04/2004	21/04/2004	24/10/1994	15/06/2002	28/09/2002	05/03/2003	12/04/2003	03/06/2003				
0628						1	3		1																														
0629																																							
0630																																							
0631				2																																			
0632																																							
0633																																							
0634																																							
0635																																							
0636																																							
0637																																							
0638																																							
0639																																							
0640																																							
0641																																							
0642																																							
0643																																							
0644																																							
0645																																							
0646																																							
0647																																							
0648																																							
0649																																							
0650																																							
0651																																							
0652																																							
0653																																							
0654																																							
0655																																							
0656																																							
0657																																							
0658																																							
0659																																							
0660																																							
0661																																							
0662																																							
0663																																							
0664																																							
0665																																							
0666																																							
0667																																							
0668																																							
0669																																							
0670																																							
0671																																							
0672																																							
0673																																							
0674																																							
0675																																							
0676																																							
0677																																							
0678																																							
0679																																							
0680																																							
0681																																							
0682																																							
0683																																							

species no.	Kwun Yum Shan summit (KF-KYS)										Misha's Bungalow (KF-MB)					KF-MG			Site Totals						KFBG Total			
	04/03/1999	10/04/1999	12/05/1999	26/06/1999	17/07/1999	18/08/1999	05/10/1999	24/11/1999	17/06/2001	06/09/2001	12/04/2003	03/06/2003	11/08/2001	23/08/2003	12/09/2003	25/10/2003	22/11/2003	27/03/2004	15/06/2001	17/06/2001	01/09/2001	KF-BG	KFBG	KF-IH		KF-KYS	KF-MB	KF-MG
0628	0	0	0	0	0	14	7	3			30		4			1						38			54	5		97
0629							2										1					0			2	1		3
0630																						1						1
0631											2		2									1			4	2		29
0632						1																7			1			8
0633	0	0	0	0	0		3	2														18			5			23
0634	0																					8			0			8
0635						1																2			1			3
0636							1							1								7			1	1		9
0637															2							3			1	2		5
0638																		2				2			2	2		4
0639	0		0	0		2		3		3	4				1	2						30		2	12	3		47
0640								1			12											21			13			34
0641						3					3				1							6			6	1		13
0642		0												1								0			0	1		2
0643			0		0	5	4				35			1	1	1	1					60		12	44	3		119
0644		0									2											16		1	2			19
0645						1								2								4			2	2		8
0646								2														5			2			7
0647											5				1							27			5	1		33
0648																						8						8
0649						1					1				1							5			1			6
0650						2					1											13			5	1		19
0651	0			0							1											6			1			7
0652						2	2				1											5			5			10
0653								1														0			1			1
0654	0	0									15											33		2	15			50
0655											20											29			20			49
0656			0				1	2							2							6			3	2		11
0657	0	0	0			10		8			1	3		1		4						23		2	22	5		52
0658																						2						2
0659																						2						2
0660											1											0			1			1
0661				0																		2				2		4
0662											5	4										68		2	9			79
0663				0																		0			0			0
0664											3											10			3			13
0665			0					2			2	10										28			14			42
0666					0		8	2			2				1							21			1	12	1	35
0667					0																	3			0			3
0668					0																	3			0			3
0669	0																					5			0			5
0670																						24						24
0671											3											24			4			31
0672											1	5			1		4					53		1	6	5		69
0673			0	0	3						3	3					3					96		4	9	3		112
0674																						3						3
0675																						4						4
0676											1	1										6				2		8
0677						1						1										8			2			10
0678																						0						0
0679						1																0			1			1
0680															1							2				1		3
0681												1										11			1			12
0682																						3						3
0683																						2						2
0684	0		0	0	0						2		1									17			2	2	1	22

species no.	Butterfly Garden (KF-BG)							Conservation Building (KFBG-Cons)														Insect House (KF-IH)																	
	24/06/2003	15/07/2003	04/08/2003	12/09/2003	20/09/2003	25/10/2003	22/11/2003	28/02/2004	27/03/2004	12/02/2001	19/04/2001	19/06/2001	03/07/2001	11/08/2001	16/08/2001	22/08/2001	30/08/2001	01/09/2001	13/12/2001	17/12/2001	19/12/2001	11/03/2003	04/04/2003	18/11/2003	25/02/2004	17/03/2004	23/03/2004	20/04/2004	21/04/2004	24/10/1994	15/06/2002	28/09/2002	05/03/2003	12/04/2003	03/06/2003				
0685				1																															3	7			
0686																																							
0687				1																																			
0688								1																															
0689					2																																		
0690																																							
0691				1																													1		3				
0692																																							
0693																																							
0694																																							
0695																																							
0696																																							
0697																																							
0698						1																																	
0699																																							
0700																																							
0701																																							
0702					2																																		
0703					2																																		
0704										1																													
0705																																							
0706							1	13																															
0707				4		2																																	
0708							2	1																															
0709																																							
0710																																							
0711																																							
0712																																							
0713																																							
0714																																							
0715																																							
0716								1																															
0717																																							
0718								4	2																														
0719									2																														
0720																																							
0721																																							
0722																																							
0723																																							
0724																																							
0725																																							
0726																																							
0727				1																																			
0728																																							
0729																																							
0730				1		1		1	6																														
0731								1	3																														
0732								1	3																														
0733									8																														
0734									3																														
0735																																							
0736																																							
0737								1	6																														
0738									7																														
0739																																							
0740																																							

species no.	Kwun Yum Shan summit (KF-KYS)									Misha's Bungalow (KF-MB)					KF-MG		Site Totals						KFBG Total						
	04/03/1999	10/04/1999	12/05/1999	26/06/1999	17/07/1999	18/08/1999	05/10/1999	24/11/1999	17/06/2001	06/09/2001	12/04/2003	03/06/2003	11/08/2001	23/08/2003	12/09/2003	25/10/2003	22/11/2003	27/03/2004	15/06/2001	17/06/2001	01/09/2001	KF-BG		KFBG	KF-IH	KF-KYS	KF-MB	KF-MG	
0685																		1				4			10		1	15	
0686																							5						5
0687								2			2				1	2						5			4	3		12	
0688											2												2		2			4	
0689																							2					2	
0690																1							0		1	1		2	
0691			0								3					1							17		4	4	2	27	
0692	0																						0			0		0	
0693																							1					1	
0694																							1					1	
0695																							1					1	
0696	0	0	0													2							4		1	2	2	9	
0697																							3					3	
0698																							19			3		22	
0699																							1					1	
0700			0	0	0						1					2	2						1			5	1	7	
0701																							1					1	
0702																							10			1		11	
0703																							3			3		6	
0704																							8		1			12	
0705																							0			1		1	
0706	4		15	1							15					3							25			38	8	71	
0707	0	0	0													2							31			1		35	
0708	0														1								9		1	5	1	16	
0709																							1					1	
0710																							1					1	
0711																							1		1			2	
0712	0															1	2						0			4		4	
0713																							1					2	
0714																							2		1			4	
0715																							2					2	
0716	0		0													2							3			4		7	
0717																1	1						0					3	
0718	0															4	2	1					0		1			23	
0719			0	0												1							7				1	8	
0720			0													1							6					7	
0721																							1					1	
0722	0	0		0												1	1						0			11		1	
0723				0																			2					7	
0724																							7			10		17	
0725	0	0														1	1						7			3		12	
0726																							0					0	
0727	0			0												3							4					9	
0728																							0					1	
0729																	1						7				5	14	
0730	0	0	0													2	3						26			8		41	
0731																		1					9			5		16	
0732	0	0														2							11			11		24	
0733																							3					17	
0734																							5				3	8	
0735																							2					2	
0736																							5			3		8	
0737			0	0																			18				11	29	
0738	0	0	0	0	0											6	2	33					12			43	6	61	
0739																							7					8	
0740																							3					4	
0741																	2	3					3					11	

species no.	Kwun Yum Shan summit (KF-KYS)									Misha's Bungalow (KF-MB)					KF-MG			Site Totals						KFBG Total					
	04/03/1999	10/04/1999	12/05/1999	26/06/1999	17/07/1999	19/08/1999	05/10/1999	24/11/1999	17/06/2001	06/09/2001	12/04/2003	03/06/2003	11/08/2001	23/08/2003	12/09/2003	25/10/2003	22/11/2003	27/03/2004	15/06/2001	17/06/2001	01/09/2001	KF-BG	KFBG		KF-IH	KF-KYS	KF-MB	KF-MG	
0742		0		0		1					3	4										25			6	8			39
0743																							3			1			4
0744						0																	1			0			1
0745				0				4															6			4			10
0746							3																0			3			3
0747														1	3		1						7				4	11	
0748						0		6			1	7					1						21		7	14	1	43	
0749		0		0	0						10	25											44		8	35		87	
0750																							1					1	
0751																							1					1	
0752												2											0		2	2		4	
0753																							1					1	
0754				0																			3			0		3	
0755								2								6							10			2	6	18	
0756																							7		1			8	
0757						1					1				1								0		1	2	1	3	
0758	0			0								1						4					5		3	1	4	13	
0759																							1					1	
0760																							0		1			1	
0761						1						3				1							7		1	4	1	13	
0762	0							1			1	2		1			1						17		2	4	2	25	
0763	0											1				1							9		1	1	1	12	
0764			0	0	0			1				7				2							15		4	8	2	29	
0765																							1					1	
0766																							14		2			16	
0767																							1					1	
0768																							2					2	
0769																							0		1			1	
0770												2											0		2	2		4	
0771																							1					1	
0772			0															2					0			0	2	2	
0773											1	1						1					11		1	2	1	15	
0774								1															4		1			5	
0775								1				2			1	4		1					13		3	3	6	22	
0776			0																				0			0		0	
0777												2											8		3	2		13	
0778		0			0	1	1	2				1	2					1					43		1	7	2	53	
0779											1	2					1	1					2					2	
0780	0		0			1																	4		3	1		8	
0781			0	0			1																6		1	1		8	
0782																							2		1			3	
0783																							0					0	
0784																							1					1	
0785																							3		1			4	
0786																							0		3			3	
0787		0										1											4			1		5	
0788												1											0			1		1	
0789																							1					1	
0790		0	0		0						4	4		1	2	1		1					24		5	8	5	42	
0791																							1		1			2	
0792																							1					1	
0793																							1			2		1	
0794				0		6						1			2								11			2		15	
0795																							6			7		13	
0796																							1					1	
0797																							1		1			1	
0798																							1		1			2	

species no.	Kwun Yum Shan summit (KF-KYS)								Misha's Bungalow (KF-MB)					KF-MG			Site Totals						KFBG Total							
	04/03/1999	10/04/1999	12/05/1999	26/06/1999	17/07/1999	18/08/1999	05/10/1999	24/11/1999	17/06/2001	06/09/2001	12/04/2003	03/06/2003	11/08/2001	23/08/2003	12/09/2003	25/10/2003	22/11/2003	27/03/2004	15/06/2001	17/06/2001	01/09/2001	KF-BG		KFBG	KF-IH	KF-KYS	KF-MB	KF-MG	KFBG Total	
0799												2										0						2	2	
0800																							3						3	3
0801												2			2								24			2	2		28	28
0802												1											0			3			3	3
0803												2											1						1	1
0804												1											1			1			2	2
0805																							3						3	3
0806																							1						1	1
0807															1								1		1	1			3	3
0808																							3						3	3
0809																							3			2			5	5
0810																							4			2			5	5
0811	0			0		0	4				1	4											1		24		2	28	28	
0812	0											1											4		1		2	4	4	
0813	0																						3		7			10	10	
0814	0																						14		1	5			20	20
0815																							11				1		12	12
0816																							0		2				2	2
0817														1									0		1				1	1
0818												4											0						4	4
0819	0																						4		1				7	7
0820	0																						1			2			4	4
0821																							3						3	3
0822															1			1					2			2			4	4
0823																							33			1			34	34
0824																							12			2			14	14
0825	0														1								7		2	13	1		23	23
0826																							0						0	0
0827	0	0																					6		1	3	2		12	12
0828																							6		1				8	8
0829																							2				1		3	3
0830																							40		6	3	4		53	53
0831																							1						1	1
0832																							1			0			1	1
0833																							1			1			2	2
0834																							0			1			1	1
0835	0	0																					78		14	1	9		102	102
0836																							3			4			7	7
0837				0			3								10	18	1						142			1	7	29	179	179
0838																							1						1	1
0839																							0			1			1	1
0840																							1						1	1
0841																							1						1	1
0842																							1			3			5	5
0843																							2						1	1
0844																							1						6	6
0845	0																						16			1			21	21
0846																							5						7	7
0847																							2			1			5	5
0848																							3				6		9	9
0849																							1			2	2		5	5
0850																							11			1			13	13
0851																							20			3			23	23
0852	0																						7		1	7			15	15
0853																							5						5	5
0854																							18			1			19	19
0855																							3			3			6	6

species no.	Kwun Yum Shan summit (KF-KYS)									Misha's Bungalow (KF-MB)					KF-MG			Site Totals						KFBG Total				
	04/03/1999	10/04/1999	12/05/1999	26/06/1999	17/07/1999	18/08/1999	05/10/1999	24/11/1999	17/06/2001	06/09/2001	12/04/2003	03/06/2003	11/08/2001	23/08/2003	12/09/2003	25/10/2003	22/11/2003	27/03/2004	15/06/2001	17/06/2001	01/09/2001	KF-BG	KFBG		KF-IH	KF-KYS	KF-MB	KF-MG
0856					0	12						2			1							23			14	1		38
0857																						1						1
0858	0						1					2										4			3			7
0859																						5						5
0860																						1						1
0861																						5		1				6
0862					0																	2			0			2
0863				0																		2			0			2
0864																						1						1
0865				0											1							4			1			5
0866	0																					0			0			0
0867												2										17		1	3			21
0868															1							2			1			3
0869	2																					1			2	2		5
0870	0																					0						0
0871												2										0						0
0872				0			2	1	2			2			1	4	1	1				11			7	7		25
0873					0	0																3		3	0			6
0874							1		1							1						1			2	1		4
0875																						1						1
0876	0											2			1	1						11		1	2	2		16
0877												5										20	2	2	5			29
0878																						1	1					2
0879										3												0			3			3
0880							1															3			1			4
0881							5		4													2			9			11
0882										1												0			1			1
0883																						6						6
0884																1						0				1		1
0885		0	0		0			2	1			2										3			5			8
0886	0								2						3							9		4	4	3		20
0887																						8			4			8
0888					0	2			1			2										22			5			27
0889	0		0		0	8			1													8			9			17
0890					0	2						1										9		1	3			13
0891																1						12				1		13
0892	0																					5			1			6
0893																						1		1				2
0894		0																				0			0			0
0895															1							3				1		4
0896						0																2			0			2
0897																						7						7
0898				0								1										12			1			13
0899																						2						2
0900				0												5						11		2	5			18
0901																						1		1				2
0902												2										2			2	1		5
0903												1										4			2			6
0904											2				1							13		1	2	1		17
0905				0																		0						0
0906						0																8			0	3		11
0907	0																					5			0			5
0908	0																					0						1
0909																						0		1				1
0910																						2						2
0911																						1						1
0912															1							0				1		1

species no.	Kwun Yum Shan summit (KF-KYS)									Misha's Bungalow (KF-MB)					KF-MG			Site Totals						KFBG Total				
	04/03/1999	10/04/1999	12/05/1999	26/06/1999	17/07/1999	18/08/1999	05/10/1999	24/11/1999	17/06/2001	06/09/2001	12/04/2003	03/06/2003	11/08/2001	23/08/2003	12/09/2003	25/10/2003	22/11/2003	27/03/2004	15/06/2001	17/06/2001	01/09/2001	KF-BG	KFBG		KF-IH	KF-KYS	KF-MB	KF-MG
0913						1																2						3
0914					0																		1					1
0915			0																				0					2
0916						1				1	1					1	1						30		2			35
0917																							9			2		9
0918											1												4			1		5
0919																1							9			1		10
0920			0																				0					0
0921	0											2			1								8			1		13
0922						0						1				1							1			1		3
0923						0		1	1														3			2		5
0924							2	1			1	3											4			7		11
0925																							2					2
0926																							1					1
0927																		1					6			1		7
0928				0																			3					4
0929									2							3							24			4		30
0930											4												4		1			9
0931	0										30	15											32		32	45	1	110
0932	0	0	0	0		8	5	3			10	4			5	2	4					79		7	30	11	127	
0933											2	1				2							3			2		8
0934														1									0			1		1
0935											1	2											7					10
0936																							16					16
0937																							1					1
0938																							2					2
0939																							6					6
0940								1															0			1		1
0941																							1					2
0942												1											0			1		1
0943																							4					5
0944												3											14			3		18
0945												2											13			2		15
0946											2	6											3			1		12
0947												3											2					6
0948						2																	0					2
0949					0																		6					7
0950			0									3											9		1			13
0951																5							6				5	11
0952																							10					10
0953																							0					1
0954			0					2			15	30	1		6		1						60		4	47	8	119
0955							2					2											20		1	4		25
0956													1										14				1	15
0957																							4					5
0958																							8					10
0959					0	0	4																6			4		10
0960												4											14			5		20
0961															1								0				1	1
0962	0	0	0	0	0	2	6	5				1											6			16		22
0963																							3					6
0964																							9				1	10
0965							1																1				3	4
0966	0	0	0	0	0	5	4	3				12		1		5							46		5	24	6	81
0967																							3					3
0968																							10			4	25	39
0969																							0					3

species no.	Kwun Yum Shan summit (KF-KYS)								Misha's Bungalow (KF-MB)					KF-MG			Site Totals						KFBG Total					
	04/03/1999	10/04/1999	12/05/1999	26/06/1999	17/07/1999	18/08/1999	05/10/1999	24/11/1999	17/06/2001	06/09/2001	12/04/2003	03/06/2003	11/08/2001	23/08/2003	12/09/2003	25/10/2003	22/11/2003	27/03/2004	15/06/2001	17/06/2001	01/09/2001	KF-BG		KFBG	KF-IH	KF-KYS	KF-MB	KF-MG
0970																						9			2			11
0971																							1					1
0972											1												0			1		1
0973										2													7			2		9
0974				0			5																0		1	0		1
0975			0								1												5			6		11
0976																							3					3
0977																							0	1				1
0978																							1					1
0979																							1					1
0980																							6					6
0981											1												4			2		6
0982																							0					0
0983														1	1								1			2		4
0984	0						8	1															21		1	11	1	34
0985																							0					0
0986																							0			1		1
0987					0		1								1								7			1	1	9
0988	0																						22		1	2		25
0989																							1					1
0990			0																				13			1		21
0991							1									1							10			1	1	12
0992																1							5				1	6
0993			0																				0					0
0994	0																						10					10
0995																							1					1
0996																1							0			1		1
0997			0																				33		2	2	1	38
0998																3							0			4		4
0999																							2					2
1000						0					1												9			1		10
1001																							5					5
1002																							2					3
1003																	1						4			2	1	8
1004	0																						8		3	0		11
1005	0		0				2									2							22			6	2	30
1006							1									2							12			1	2	15
1007						0	3																7		2	7		16
1008				0			5																4			6		10
1009														1									6				1	7
1010																							5					5
1011																							4			1		5
1012																							8					8
1013			0																				1			1		2
1014																							4			4		4
1015																							5					5
1016																							10		1			11
1017																							0			3		3
1018																1							8			1	1	10
1019																	1						6			2	1	9
1020																							2					2
1021																							19			1		20
1022			0	0	0		6	3															34			10	1	45
1023																							1					1
1024	0		0	0																			1					1
1025																							1					1
1026																							6					6

species no.	Kwun Yum Shan summit (KF-KYS)								Misha's Bungalow (KF-MB)					KF-MG		Site Totals						KFBG Total							
	04/03/1999	10/04/1999	12/05/1999	26/06/1999	17/07/1999	18/08/1999	05/10/1999	24/11/1999	17/06/2001	06/09/2001	12/04/2003	03/06/2003	11/08/2001	23/08/2003	12/09/2003	25/10/2003	22/11/2003	27/03/2004	15/06/2001	17/06/2001	01/09/2001		KF-BG	KFBG	KF-IH	KF-KYS	KF-MB	KF-MG	
1027				0	0	3		2			2	6		2		1						67			7	13	3		90
1028						1		1									1					4			2	1		7	
1029											2											9			2			11	
1030																						1						1	
1031																						3						3	
1032																		1				1				1		2	
1033	0		0								2											2	2		2			6	
1034																						7						7	
1035											1											1			1			2	
1036																						2	2					3	
1037																						3			1			3	
1038	0										1											5			1			6	
1039																						2						2	
1040																						12						12	
1041											6											9			6			15	
1042	0			0	0	1																7			1			8	
1043											5					1						8			5	1		14	
1044																						2						2	
1045	0			0		1	3				6					1						6			10	1		17	
1046																						0						0	
1047											1			1								10			2	1	1	14	
1048															1							0				1		1	
1049						2					2											10		2	4			16	
1050											1											3			1			4	
1051																6	1					6			3	7		16	
1052	0	0				2	2				1											0			5			5	
1053	0					4	1	2						1								7		1	9	1		18	
1054						2					4											2			6			8	
1055						1																1			1			2	
1056		0	0					1														0			1			1	
1057						1									1							5			1	1		7	
1058				0							2											2			2			4	
1059					0																	1			0			1	
1060																						1						1	
1061																						11						11	
1062				0	0	0																1		1	0			2	
1063						1	1	4						1								9			6	1		16	
1064				0		1																2						3	
1065																						2						2	
1066										3	9											20		5	12			37	
1067																						2						2	
1068										3	30											1		1	33			35	
1069											1											1			1			2	
1070			0							2	6				3	1						5			8	5		18	
1071	0							1														4			1			5	
1072		0	0		0	3	4	2								2						58		13	14	8		93	
1073					0		2								1	1						7			2	2		11	
1074				0																		1			0			2	
1075				0	0										2	3						65	1	1	3	6		76	
1076																						0						0	
1077					0							3										3		1	3			7	
1078					0							3										9		1	3			13	
1079																						1						1	
1080	0			0								3	25									26		7	28			61	
1081											6											5		1	6			12	
1082																1						4				2		6	
1083				0																		4						4	

species no.	Kwun Yum Shan summit (KF-KYS)							Misha's Bungalow (KF-MB)					KF-MG			Site Totals						KFBG Total						
	04/03/1999	10/04/1999	12/05/1999	26/06/1999	17/07/1999	18/08/1999	05/10/1999	24/11/1999	17/06/2001	06/09/2001	12/04/2003	03/06/2003	11/08/2001	23/08/2003	12/09/2003	25/10/2003	22/11/2003	27/03/2004	15/06/2001	17/06/2001	01/09/2001		KF-BG	KFBG	KF-IH	KF-KYS	KF-MB	KF-MG
1084			0																			0						0
1085	0		0			1					1											7						9
1086						0																0						0
1087						0																0						0
1088											2											20						22
1089																						9						9
1090															1							0		1				2
1091																						1						1
1092															1							0						1
1093																						5						5
1094											3	4										27		1		7		35
1095																						8						8
1096																						2						2
1097																						1						1
1098																						2						10
1099	0											2		1	3	7						37		8		11	11	60
1100																						6						9
1101																						52						54
1102																						1						1
1103												4										17			2			24
1104																						14						14
1105						0	0	14	2							1						29			18	1		48
1106								1														9						10
1107								1														2						3
1108												1										1						2
1109								1														0						1
1110														1								8				5		16
1111								1														0						1
1112																						1						1
1113								1	2													2		2		3		7
1114											1											0						1
1115								0	2													54		2		2		58
1116																						34						34
1117																						1						1
1118																						17						18
1119																						3		1		2		9
1120																						1						1
1121																						19				4	2	25
1122																						4						4
1123																						2						3
1124																						27				1	20	48
1125																						6						6
1126																						1						1
1127	0	0	0	0																		30		2		3	3	38
1128																						2						3
1129																						1						1
1130																						0						2
1131	0																					70			2		55	130
1132																						1						3
1133																						0						1
1134																						0						1
1135																						10						15
1136																						79		1		1	13	116
1137																						0						2
1138																						0						0
1139																						6						7
1140																						6						9

