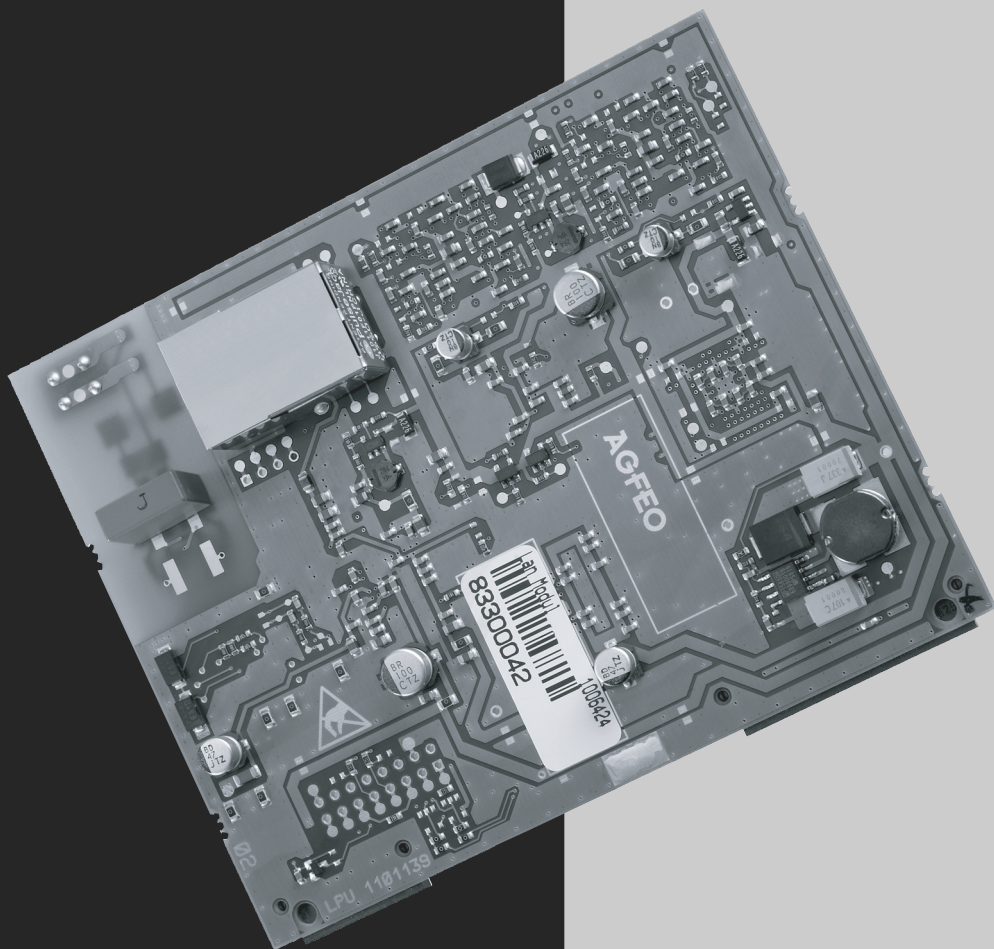


## LAN-Module 508



## About this Manual

All function described are referring to the current software available at the time of printing. After software updates functions and the associated handling thereof may change. The ASIP technology (AGFEO System IP) is merely utilising existing networks as a transportation method only, AGFEO does not undertake maintenance or support of networks.

AGFEO telecommunication excludes any warranty due to improper use of ASIP products or their use in unsuitable networks.



**Please consult the network administrator before implementing any changes to the network configuration!**

# Introduction

## Table of Contents

<b>Introduction</b>	
About this Manual .....	2
Table of Contents .....	3
System Description .....	4
<b>Installation</b>	
LAN-Module Connections .....	5
LAN-Module LED .....	5
Installation of LAN-Module .....	6
Establishing Connection via LAN-Cable .....	7
Technical Data .....	8
<b>Setup</b>	
Establishing a connection to the LAN-Module 508 .....	9
The TK-Suite Server .....	10
<b>Setup Internal IP-Telephony</b>	
Registration of ST 40 IP to your LAN-Module 508 .....	11
<b>Special Settings</b>	
Display LAN-Module Status in System Phone .....	12
Reset LAN-Module to default .....	12
<b>Addendum</b>	
Index .....	13
Copyright Notice .....	14
Help .....	14

# Introduction

## System Description

The LAN Module 508 will integrate the AGFEO Telephone Systems AS 43, AS 45 and AS 200 IT into networks and offer the proven service and feature characteristics for employment and operation via the network interface.

The LAN Module 508 offers an ASIP server with the utilisation of 8 internal channels. This will enable you to utilise the existing network structure and register up to 8 ST 40 IP's to your LAN Module 508. The ST 40 IP will offer the same possibilities for the use of AGFEO Telephone Systems as other internal system phones. For further information please refer to the user guide of the ST 40 IP (Ident No. 1102021)

The telephone system may also be programmed via the LAN Module 508, utilising the integrated TK-Suite Set.

Up to 2 LAN Modules 508 may be operated in each of the AS 43, AS 45 or AS 200 IT.

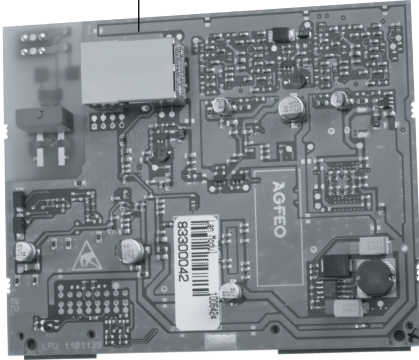
Additional information is available via the Internet at:  
<http://www.agfeo.com>

# Installation

## LAN-Module Connections

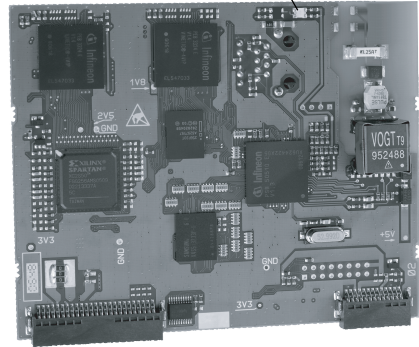
Front

Netzwerkanschluss



Back

LED



## LAN-Module LED

The LAN-Module 508 has a status LED which will give information on the current status of the module.

### LED

**Off**

**Flashes slowly**

**Flashes quickly**

**On**

Firmware Update of  
LAN-Module in progress  
LAN-Module is starting  
up  
LAN-Module is  
operational

# Installation

## Installation of LAN-Module

### Data Backup

Install the PC programming software AGFEO TK-Suite which is on the enclosed CD. Launch the program TK-Suite Set. In order to backup programming data please read/receive the complete telephone system programming and, if applicable, TK-Suite Bill which contains data regarding call charges. Save this data to a hard drive or removable medium.

### System Update

Before installing the LAN Module into the telephone system you must ensure that the telephone system has the required operating software (SM version 8.2 or higher and firmware version 8.2 or higher) available. Current software can be found in our partner area at [www.agfeo.com](http://www.agfeo.com).

### Please Note the Order of Updates

You must first update the Start Module (SM), after which the system will remain inactive. Therefore update the firmware immediately afterwards. After successful update please wait until the system powers up again. After firmware update the system must be reset to default (erase system memory). Please note that ALL data will be deleted including system programming and billing information. Upload the earlier saved system programming data and check that all settings are correct.

### ATTENTION:

Due to comprehensive changes within the firmware the following areas must be newly reprogrammed after a firmware update from version 7.6 to version 8.0: EIB, Status Display of System Phones, Answering Machine and Call Barring. The system must be completely reprogrammed for any firmware updates which falls outside these two versions (←7.6 - → 8.0)!

For the installation of the LAN Module refer to your AGFEO Telephone System Installation Manual!

**NOTE: The LAN-Module 508 must only be fitted in the Master Cabinet for AS 45's and AS 200 IT's which are interconnected.**

**Attention: The LAN-Modul 508 may only be operated in slot 1-3 of an AGFEO AS 43, AS 45 or AS 200 IT.**

**Warning: Unplug the Telephone System from Mains Power before any modules are changed.**

# Installation

## Establishing Connection via LAN-Cable

The LAN Module 508 does not offer a DHCP server and in default is configured as DHCP client. This means that the LAN Module 508 can be integrated into an existing network and an IP address will then be allocated from the DHCP server to the LAN Module 508. Should you not operate a DHCP server within your network then you will not be able to address the LAN Modul 508 via the network for initial programming!

You may use a system telephone to find out what IP address the DHCP server has allocated to your LAN Module 508 (see page 12, „Display LAN Module Status“).

# Installation

## Default Setting

- IP-Address: None Allocated, DHCP-Client enabled.
- User „admin“ and Password „admin“ are set.

## Technical Data

SIP-Codecs in order of preference

- without Compression      711PCM and 711PCMU
- with Compression          G. 726-32  
   G. 726-24  
   G. 726-16  
   G. 726-40  
   G. 728



# Setup

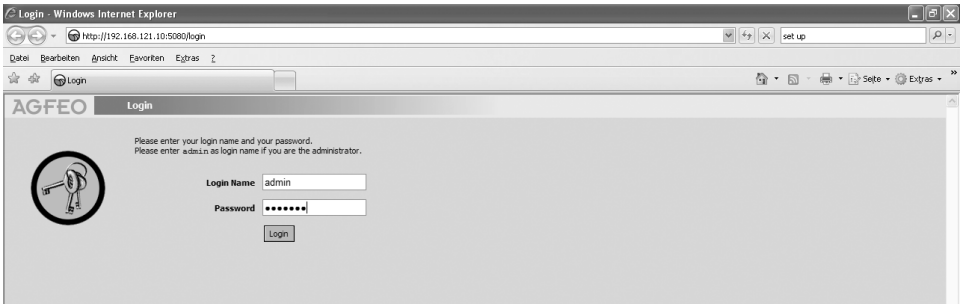
## Establishing a connection to the LAN-Module 508

If you know the IP-address of your LAN-Module 508 then start your browser on a computer which is within the same network and enter the following URL address into the address bar:

http://IP-ADDRESS:5080/login

The LOGIN Window of the LAN-Module 508 will be displayed.

Login in with the Login Name "admin" and the password "admin".



A menu will now be displayed offering access to the several programs of the TK-Suite Server



To program the telephone system please select the blue icon (TK-Suite Set).

# Setup

## The TK-Suite Server

### Note:

We would like to suggest to change the password for the user "admin" immediately after a successful login. This will eliminate unauthorised access to the TK-Suite Server program (Set.) In addition each computer connected to the LAN-Module should have a user account allocated to them. Each of these users may have different levels of access assigned to them to restrict access to other programming components.

AGFEO Server settings / TK-Suite Users

Restore Settings Apply Settings

Info about: TK-Suite Users

Login Name	Full Name	Password	Assigned phones	Restrict CTI information	User authorisation
admin	Administrator	*****	All		Phonebook Edit LCR Phone settings Bill connection data SysTel buttons Chat in client Phone diversions Edit user accounts Call filtering Administrator Timer
telephone 17	telephone 17	**	ST-40 AB (17) private Phonebook Public		Phonebook Edit LCR Phone settings Bill connection data SysTel buttons Chat in client Phone diversions Edit user accounts Call filtering Administrator Timer

### Note:

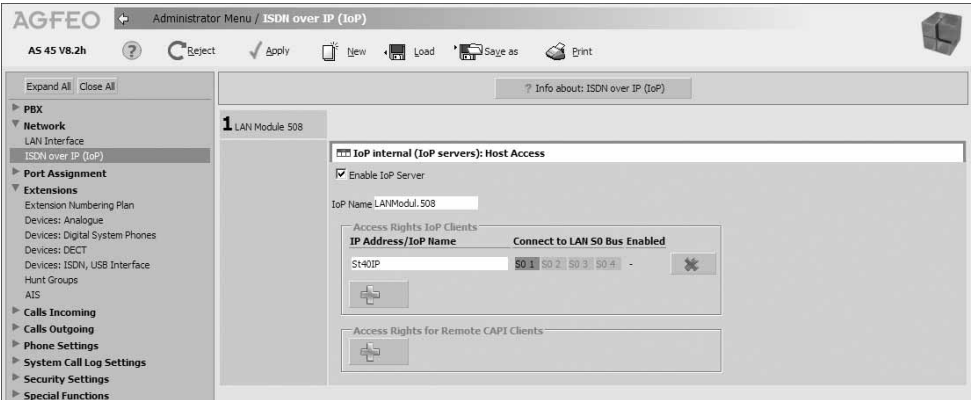
The user "admin" can only be edited if you are logged into the LAN-Module as "admin."

# Setup internal IP-telephony

## Registration of ST 40 IP to your LAN-Module 508

You may register up to 8 ST 40 IP to your LAN-module 508.

- Register your ST 40 IP to your telephone system as described in the ST 40 IP manual.
- Launch TK-Suite Set (see Page 9)
- Click onto "Network/ISDN over IP (IoP)"
- Tick the checkbox "Enable IoP Server", if not already done so



- Click onto "Extensions/Devices: Digital System Phones"
- Allocate an extension number to your ST 40 IP.



- Click onto "Apply" to activate the new settings.

# Special Settings

## Display LAN-Module Status in System Phone

The name of the LAN Module, internal IP address, the MAC address, and the DHCP status can easily be displayed on the system phones ST 21, ST 30, ST 31 and ST 40. The two line display of the ST 21 can be scrolled through by using the arrow buttons.

Press  $\rightarrow$   $\square$   $\square$   $\square$  to display the above on the System Phone. Should you have more than one LAN Module in your telephone system, then use the arrow buttons to select the required module and confirm by pressing "OK".

The DHCP Status will be displayed in an abbreviation after the IP address:

**DN** denotes static IP

**DS** denotes DHCP Server

## Reset LAN-Module to default

The following programming procedure will reset all LAN-Modules Type 508/510 installed in your system to default:

Start Programming Mode:  $\square$   $\square$   $\square$   $\square$

Reset LAN-Module:  $\square$   $\square$   $\square$   $\square$   $\square$   $\square$   $\square$   $\square$   $\square$   $\square$   $\square$   $\square$

End Programming Mode:  $\square$   $\square$   $\square$   $\square$

# Addendum

## Index

### C

Copyright Notice ..... 14

### D

Default Setting ..... 8

Display LAN-Module Status in .....  
System Phone ..... 12

### E

Establishing a connection to the .....  
LAN-Module 508 ..... 9

Establishing Connection via .....  
LAN-Cable ..... 7

### H

Help ..... 14

### I

Index ..... 13

Installation of LAN-Module ..... 6

### L

LAN-Module Connections ..... 5

LAN-Module LED ..... 5

### R

Registration of ST 40 IP to your .....  
LAN-Module 508 ..... 11

Reset LAN-Module to default ..... 12

### S

System Description ..... 4

### T

Table of Contents ..... 3

Technical Data ..... 8

Technical Modifications ..... 14

The TK-Suite Server ..... 10

# Addendum

## Copyright Notice

Copyright 2008 AGFEO GmbH & Co. KG  
Gaswerkstr. 8  
D-33647 Bielefeld

All rights reserved. Not excluding any rights or issues which will relate or effect patent matters. Reproduction of this manual, in part or in whole, or translation into other languages in any way or form, (whether hard copy, electronic- or any other format) is strictly prohibited unless permission has been granted in writing by the above copyright holder.

All trademarks or registered trademarks mentioned in this documentation are subject to the rights of the respective holders and are herewith acknowledged.

## Technical Modifications

The information contained in this document is subject to change without any prior notice. AGFEO GmbH & Co. KG will not accept any liability for any errors that may have occurred in this document. We aim not to include typographical errors or inaccuracies and have taken great care in the preparation of this document. Errors which are brought to our attention will be rectified and published in the next issue. However, we are always grateful for information advising us of possible errors which may have inadvertently occurred in this documentation.

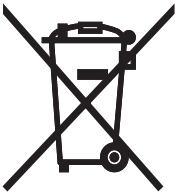
## Help

In the first instance please contact your Dealer should you have any questions or technical issues. Alternatively you may contact us directly via the internet where you will find a special enquiry form designed for this purpose. Please complete the requested information so that you query can be handled efficiently.

Note: Some features may not be available in your country or must be specially provided by your service provider.

Please contact your service provider should you require information regarding the availability of network features.





The crossed out wheeled bin on the product means that this belongs to the group of Electro- and electronic apparatus.

In this context you are directed by the European regulation to dispose of used apparatus

- at the point of buying an item of equal proportion / value
- at the local available collection point for disposal

With this you will participate in the reuse of material and valorisation of disused electric- and electronic apparatus, which otherwise could be a health hazard and be negative to the environment.

