

CONFIDENTIAL

Not for distribution except by  
Simplement to its customers and  
prospects

Copyright Simplement PR, LLC. 2016

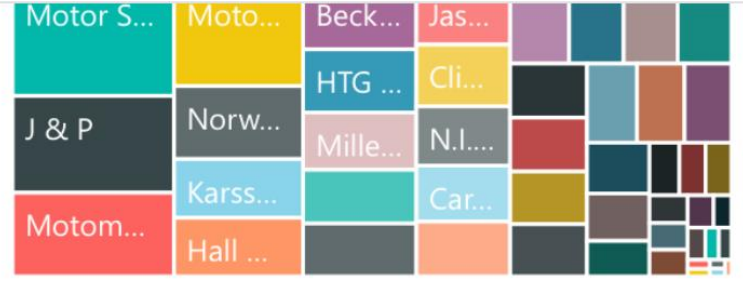


*Simplement's flagship solution Data Liberator, combined with Microsoft Analytics Solutions provide a compelling and cost effective alternative for delivering self-service insights for your SAP Landscapes.*

---



# MasterDash



Please use the paper instructions on your chair for quick reminder on how to install Power BI on your mobile device.

We will be showing you how our technology enables flexible reporting in SAP with Power BI

## Open PO By Country



## Order Values by Plant



# Unique Value Proposition

*Simplement's flagship solution Data Liberator, combined with Microsoft Analytics Solutions provide a compelling and cost effective alternative for delivering self-service insights for your SAP Landscapes.*

***\*If you got to your seat, prior to the session – please take 3 minutes and follow the instructions to access Power BI on your mobile device – we will be showing a live change to a report\****

# SIMPLEMENT ATTENDEES / AGENDA

## Attending in person:

Bill MacLean – Chief Data Architect  
John Kleinhenz – Strategic Account Executive

## Agenda:

- Who is Simplement?
- What does the Simplement Solution do?
- How does it work?
  - Data Liberator Platform
  - Smart Starts (pre-built data models – plugs right into MS Power BI)
  - Simplement - POWER BI on attendees mobile device
- Customer Stories / Business Scenarios
- Q&A

# Who is Simplement?

- Unique solutions provider that leverages the Microsoft technology to help SAP customers improve reporting.
- Award winning software for innovation from Microsoft 2014, 2015
- In business since 1998, profitable, with 25+ employees
- Microsoft Certified Gold Partner
- SAP customers are our only focus, our team has been in your shoes
- Software company with expert consulting services
- Our main focus since we began has been on making SAP easier to use and more accessible

**Microsoft**<sup>®</sup>  
**GOLD CERTIFIED**  
*Partner*



**Simplement**<sup>™</sup>



# Some of our Customers



Johnson & Johnson



ARCONIC

Innovation, engineered.

Turner

Rio Tinto



Kimball<sup>®</sup>  
International  
Kimball Office | National | Kimball Hospitality



Kiewit

FlightSafety<sup>®</sup>  
international

Alvogen

Omnicell<sup>®</sup>

ALBANY<sup>®</sup>  
INTERNATIONAL

sysmex

LORD<sup>®</sup>  
Ask Us How<sup>™</sup>

SKYWORKS<sup>®</sup>

MODINE<sup>®</sup>  
APPLIED THERMAL INNOVATION<sup>™</sup>

EZIBUY

Bemis<sup>®</sup>

Teck

Ditch Witch<sup>®</sup>

SAFRAN<sup>®</sup>  
Labinal Power Systems

SLADE GORTON<sup>®</sup>  
NO ONE ELSE.



BOB'S<sup>®</sup> DISCOUNT  
FURNITURE

TORO<sup>®</sup>

adveo

FORTESCUE<sup>®</sup>  
The New Force In Iron Ore

Simplement<sup>™</sup>

# WHAT DOES THE DATA LIBERATOR™ DO?

1

## REAL TIME DATA OUT OF SAP

- No Load on SAP
- Always up to date
- Replication (not extraction)

2

## EASIER/MORE INTUITIVE Automatic Data Transformation

- Leverage SAP Security Model
- Hierarchies
- Full English Descriptions
- Much more
- Apply the Power of Microsoft BI to SAP data.

3

## BETTER SAP REPORTING

- C-Level Friendly – Executives Love the visualization
- Self-serve reporting is a reality
- Enable End User Tools  
PowerBI, Excel, etc.

# SIMPLEMENT PRODUCTS

## Flagship software – The Data Liberator™:

DATA LIBERATOR

ALWAYS ON, REAL-TIME REPORTING MEANS  
SMARTER, FASTER DECISION MAKING

**Includes:** Replication Manager, Data Director (Security Projector, Hierarchy Projector, Buena Vistas, Long Text, etc.)

## Supplemental reporting products – Smart Starts™:

SMART STARTS

With Smart Starts™, you can generate reports in minutes or hours instead of weeks or months. So, you can make smart decisions much faster than before.

**Available Smart Starts™:** AR, AP, GL, Purchasing, Inventory & COPA

**Includes:** Fact and Dimension Views in SQL Server, plus models and sample reports.



# HOW DOES THE DATA LIBERATOR™ WORK?

- No load on SAP
- Automatic Data Transformations
- Automatic Security and Hierarchies
- Tools and Business Logic that are SAP Aware
- Pre-Built Models deliver Business Solutions right now
- SQL Server, Oracle, Db2, or HANA SAP Source
- A fraction of the cost in Money and Time

# The Data Liberator is NOT simply a data movement tool (overview)

## Data Movement Tools don't do what The Data Liberator does

- Data Liberator automatically understands and enhances SAP data
- Data Liberator comprehends the customer's total SAP environment, including custom Z objects
- Data Liberator *automatically* transforms SAP data
- Data Liberator Smart Starts create business entities from raw SAP data

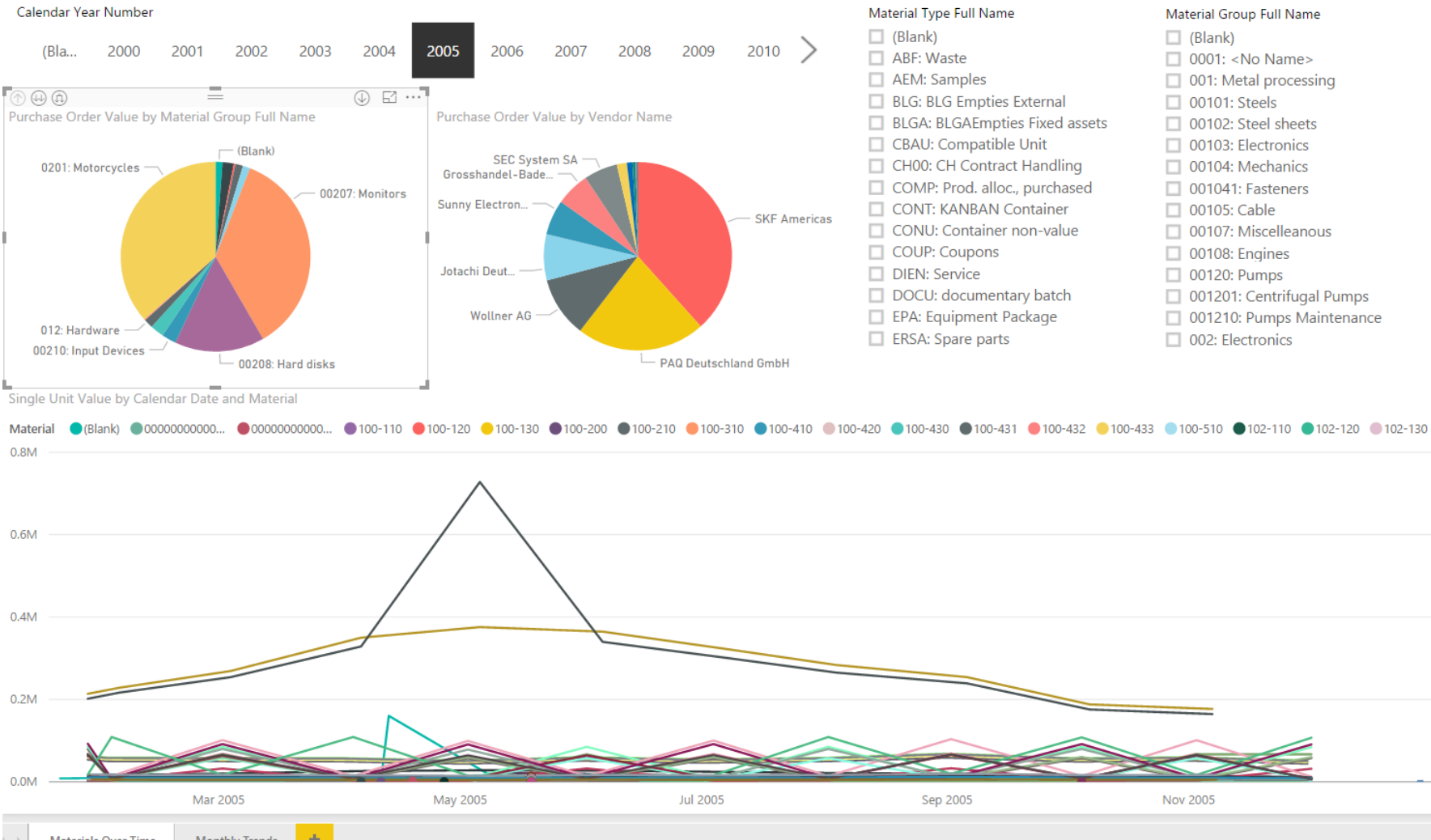
## Replication for the Data Liberator

- As long as it's replicated, we don't care how the data gets to the Data Liberator
- We provide out of the box data replication for SQL Server, Oracle, DB2
- We use SLT for HANA
- Customers have also used Informatica (CDC) and Oracle Golden Gate

# *Simplement Data Liberator and HANA Source*

- The Data Liberator works with HANA just the same way it works with SQL/Oracle/Db2
- The Data Liberator's sophisticated automatic abstraction and semantic enhancement insulate your developers and future-proofs their work if/when you move to HANA
- All the value-add work is done on the Data Liberator, not in the replication channel.
- The particular replication method chosen is not important
- Use SLT to replicate data from HANA, and the Data Liberator will keep performing its job of simplifying SAP data, resolving Security and Hierarchies, providing a stable abstraction layer, injecting semantic information, and providing a modern modeling environment

# Simplement – Power BI



**Visualizations**

**Fields**

Search

- Account Assignment
- Calendar
- Company
- Currency
- Functional Area
- Material
- Material Group**
  - Material Group
  - Material Grou...
  - Material Grou...
  - Material Grou...
- Material Type**
  - Account Categ...
  - Field Reference
  - Material Type
  - Material Type ...
  - Material Type ...
  - Price Control L...
  - Reference Mat...
  - Screen Refere...
  - Order Reason
  - PD Item Category
  - Plant
  - Purchasing Doc**
  - Purchasing Group
  - Purchasing Organiz...
  - Unit of Measurement
  - Vendor
    - Address
    - Country
    - Display Vendor
    - State - Province
    - Vendor
    - Vendor Compl...

Legend

Material Group Full Nan

Material Type

Details

Drag data fields here

Values

Purchase Order Value

Tooltips

Drag data fields here

**Filters**

Visual level filters

Material Group Full Name...

Material Type(All)

Purchase Order Value(All)

Page level filters

Drag data fields here

Report level filters

Vendor

contains '10'

Filter Type

Advanced filtering

Show items when the value:

# NOT simply a data movement tool (detail)

## SIMPLEMENT DATA LIBERATOR™

### Cluster Tables

Automatically creates real tables from the Multiple logical tables stored as binary data in SAP table clusters

### Pool Tables

Automatically creates table-value objects from multiple logical tables stored in SAP table pools

### Security

Automatically provides SAP security to Liberated data.

### Hierarchies

Automatically Resolves:

- Key Org Unit Groups
- HR Reporting Relationships
- Financial Statements

### Dates/Times

Stored as text by SAP. Liberator solution automatically converts to the proper data types.

### Table/Column Names

Liberator automatically describes every table and column in English

### Building Blocks

SRV tool makes it easy to create standardized views

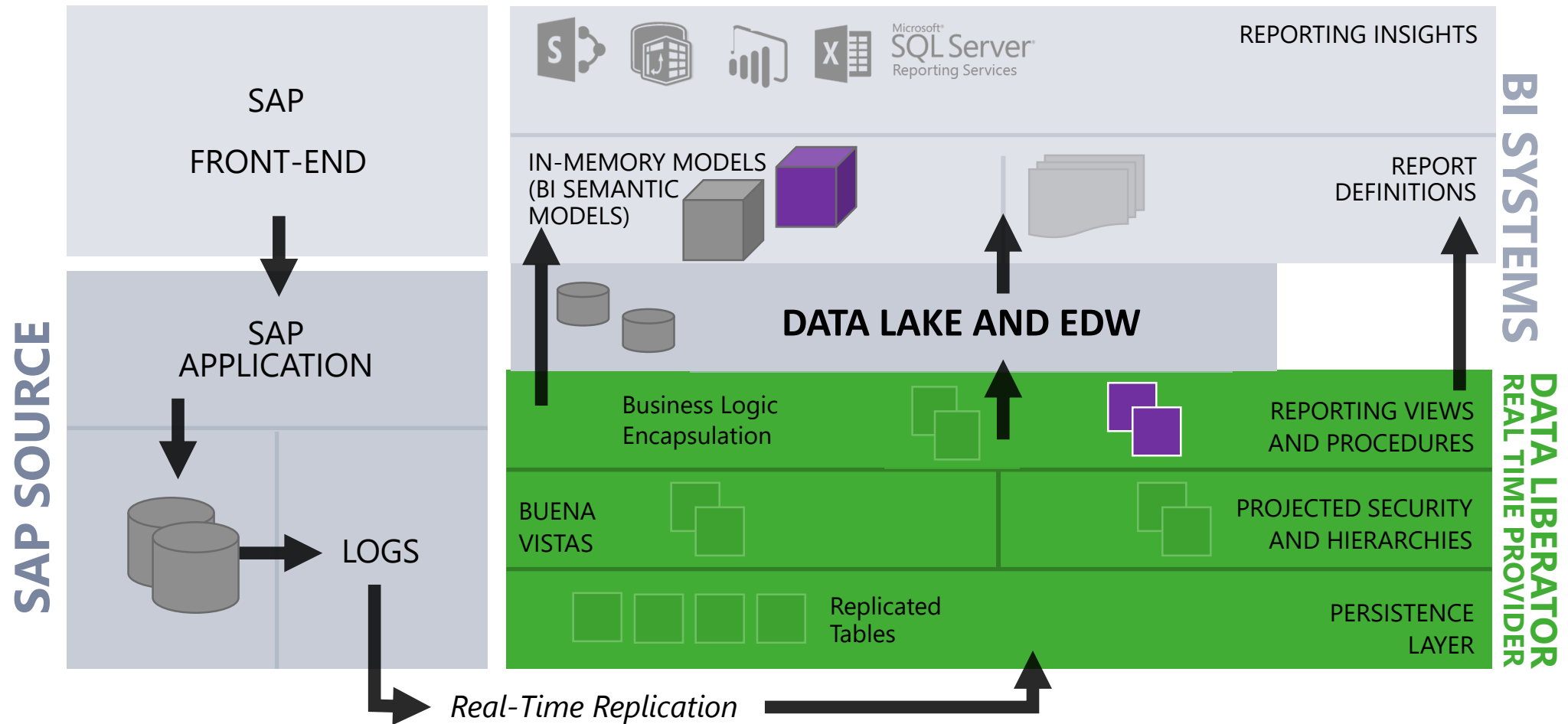
### No Impact on SAP

Liberator avoids RFC calls and extractions, so there is no load on your source system.



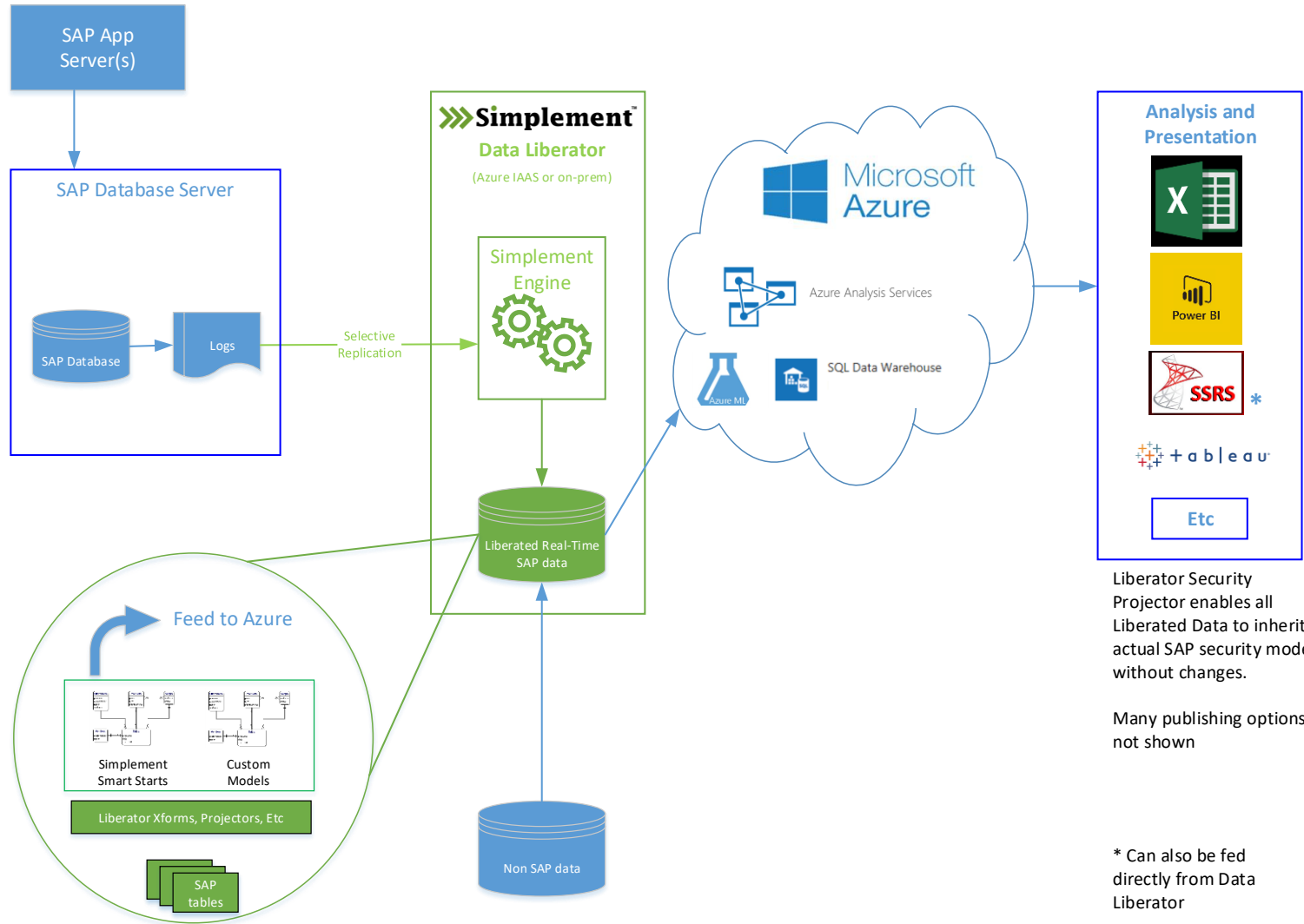
# SIMPLEMENT REFERENCE ARCHITECTURE

## FOR FLEXIBLE SAP REPORTING IN A MODERN DATA WAREHOUSE ENVIRONMENT



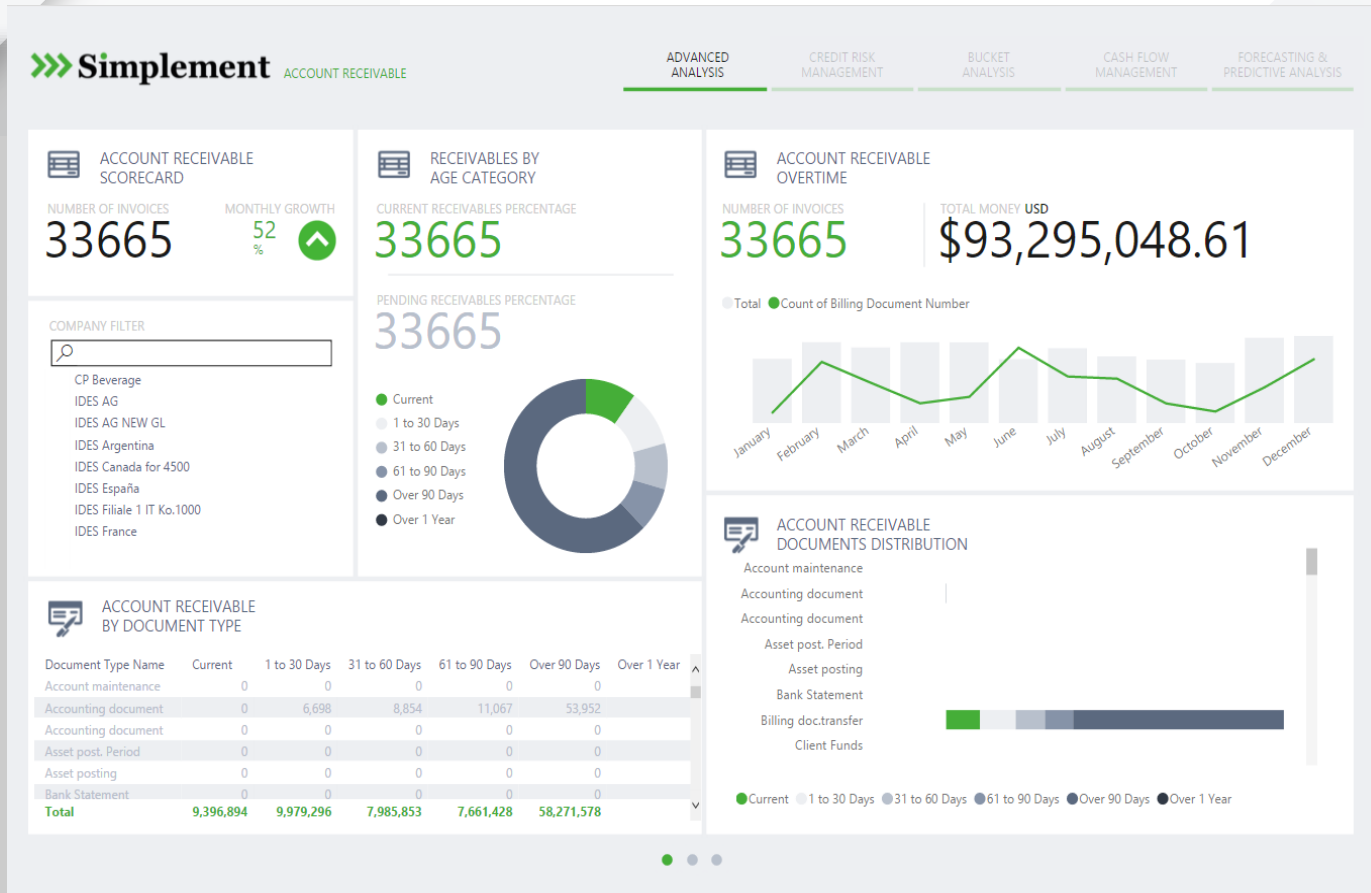
KEY: Smart Start Components deployed in conjunction with DL

# Simplement Drives Azure Consumption Motivates Customer to Lift and Shift



# REAL TIME SAP ANALYTICS

*Powered by Simplement AND Microsoft Power BI*



- » Enables self-service analytics for business users using PowerBI or existing BI tools
- » Delivers value to the business in under 60 days
- » Analyze real-time data with zero impact on your SAP infrastructure
- » Cost justification in 1-2 months vs. Hana.
- » Operates alongside or in lieu of BW / SAP BI implementations

*Microsoft and Simplement – Best in class / Best in cost for SAP analytics.*





## PRE-BUILT ANALYTIC CONTENT (REPORT)

Rich, interactive visualizations and self-serve data sets built on Power BI for every part of your business

**AP**  
(Accounts Payable)

**General Ledger**

**AR**  
(Accounts Receivable)

**Inventory**

**Asset History**  
(Capital Assets/Equipment)

**Overhead**

**COPA**  
(Profitability Analysis)

**Purchasing**

**Sales & Distribution**