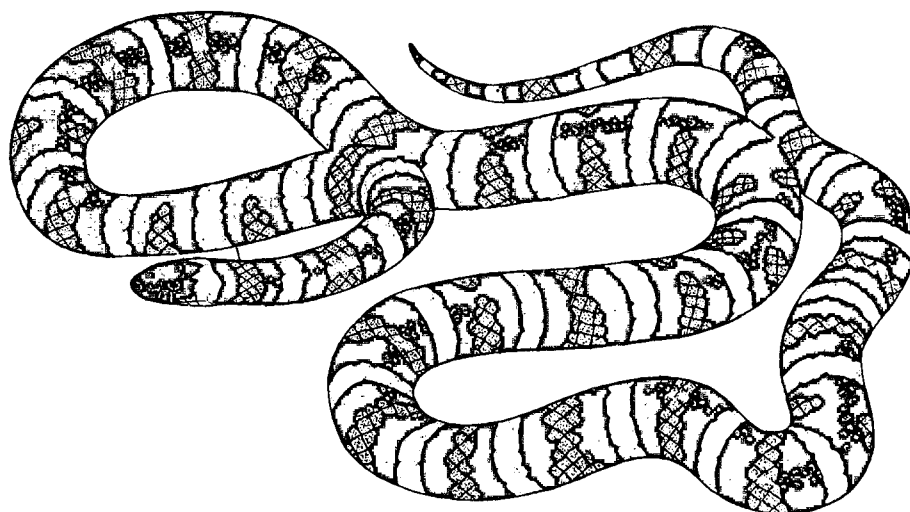

RARE, THREATENED
AND ENDANGERED PLANTS
AND ANIMALS OF OREGON



OREGON
NATURAL HERITAGE
DATA BASE

MARCH, 1985

Published by the Oregon Natural Heritage Data Base
in cooperation and consultation with:

The Nature Conservancy
The Oregon Department of Fish and Wildlife
The Oregon Natural Heritage Advisory Council
The United States Fish and Wildlife Service
Zoologists and Botanists throughout Oregon

Cover Illustration: *Lampropeltis zonata* (California mountain kingsnake). Drawn by Alan D. St. John

INTRODUCTION	1
PHYSIOGRAPHIC PROVINCES	2
OUTLINE AND DEFINITIONS	3
SPECIAL ANIMALS	4
List 1	5
List 2	6
List 3	8
Review List	10
SPECIAL PLANTS	11
List 1	12
List 2	15
List 3	20
Review-List	22
Watch List	23
Drop List	24
ANIMAL INDEX	25
PLANT INDEX	27
ACKNOWLEDGEMENTS	

Extinction is a natural process. Today, however, plant and animal species are disappearing world-wide at an accelerated pace. Conservative estimates place the current rate of extinction at a thousand times the natural rate. The major cause of this phenomenon is large-scale alteration to native habitats. Ever since the impacts of European settlement began in the mid 1800's, this loss of ecosystem diversity has been a problem in Oregon as well.

Once lost, a species can never be recovered, and there is no way of knowing how useful it may have been. We do know that human beings and many of their industries are still dependent on plants and animals that have developed in conjunction with natural ecosystems, and that each species contains its own specially evolved genes. About fifty percent of all pharmaceuticals have a natural component as an active ingredient, yet only two percent of the world's plants and animals have been chemically analyzed and tested. Many invertebrates contain undescribed and highly functional compounds. *Limnanthes floccosa*, or wooly meadow-foam, a rare plant that grows in southwest Oregon, is a member of a genus which is currently being studied by the National Aeronautics and Space Administration for its oil-like high temperature lubricative properties. *Gila boraxobius*, the Borax chub, thrives only in an extremely harsh, high temperature alkaline desert lake. These are the types of unique genetic material that could benefit science and mankind in the years ahead, and which should have a high priority for protection.

These lists have been compiled using the most current information available on the distribution and abundance of plant and animal species native to Oregon. They have been prepared in part to assist public and private land managers and planners in determining which species are of special concern within their given management jurisdictions. They are also intended for use by amateur and professional botanists and zoologists to help focus their attention on those taxa most in need of field searches and data collection efforts. In Oregon, the Division of State Lands, through its Natural Heritage Advisory Council, has responsibility and jurisdiction over threatened and endangered plants. This agency has entered into a cooperative agreement with the United States Fish and Wildlife Service for the purpose of carrying out research and conservation programs on such plant species under the auspices of the federal Endangered Species Act. The Oregon Department of Fish and Wildlife has similar statutes regarding threatened and endangered animals.

The Oregon Natural Heritage Data Base maintains a comprehensive computerized and manual data bank on Oregon's rare, threatened and endangered plants, animals and ecosystems. Site-specific information is available here. Support for this system comes primarily from The Nature Conservancy and the many public agencies who have as a part of their goals and mandates, the identification and protection of sensitive species and their habitats. These agencies, together with the state's herbaria and museum collections, also provide much of the information that makes up the Data Base. Although this report is based on a large volume of information, it is by no means complete. Much is known about some species, very little about others. The Data Base welcomes additional information or suggestions on any of the taxa listed herein. Such information, as well as data requests should be directed to:

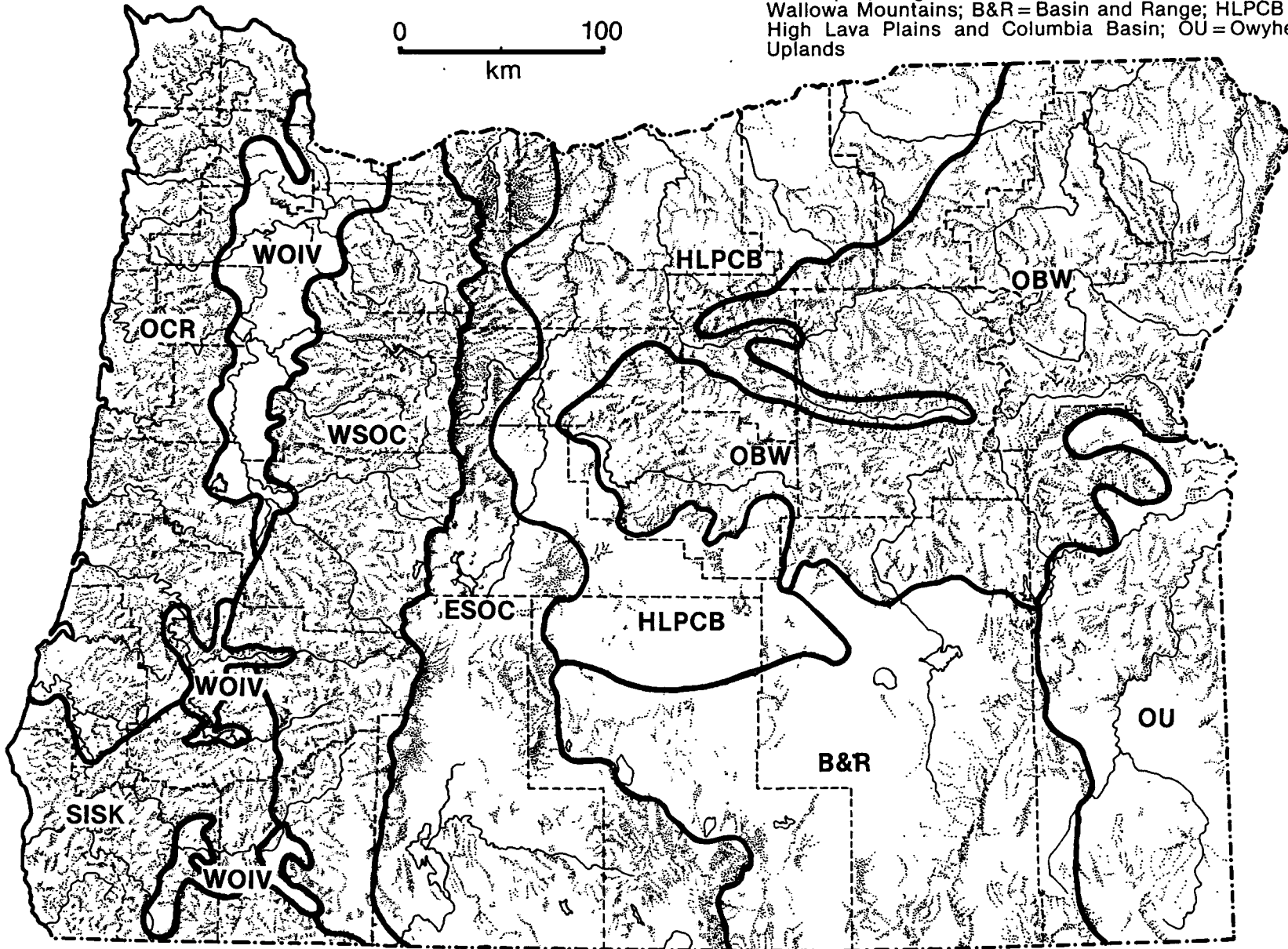
Oregon Natural Heritage Data Base
1234 N.W. 25th Avenue
Portland, Oregon 97210
(503)228-9550

This publication will be updated on an as-needed basis. Copies may be obtained at cost (\$4.00).

It is hoped that by identifying, monitoring and providing accurate data on species of concern, needless conflicts between conservation and development can be avoided so that the greatest possible diversity of native plants and animals will be passed on to future generations.

Physiographic Provinces of Oregon:

OCR = Oregon Coast Range; WOIV = Western Oregon, Interior Valleys; SISK = Siskiyou Mountains; WSOC = Western Slopes and Crest, Oregon Cascades; ESOC = Eastern Slopes, Oregon Cascades; OBW = Ochoco, Blue, and Willowa Mountains; B&R = Basin and Range; HLPCB = High Lava Plains and Columbia Basin; OU = Owyhee Uplands



The lists are divided into three categories:

List 1 contains taxa that are threatened with extinction or presumed to be extinct throughout their entire range. It is largely consistent with the listed and Category 1 and 2 species from the Federal Notice of Review on endangered and threatened wildlife and plants as published by the United States Fish and Wildlife Service. These species are in need of active protection measures to insure their survival.

List 2 contains taxa that are threatened with extirpation or presumed to be extirpated from the state of Oregon. These species are of concern when considering the floral and faunal diversity within Oregon's borders.

List 3 contains taxa that are limited in abundance and/or distribution in Oregon or throughout their range and which may or may not be currently stable. These species are not currently threatened with extinction or extirpation. However, their populations are in need of active monitoring, and all are candidates for List 1 or List 2 if serious declines are documented.

Additional definitions:

Endangered taxa are those which are in danger of becoming extinct within the foreseeable future throughout all or a significant portion of their range.

Threatened taxa are those likely to become endangered within the foreseeable future. For purposes of this list, foreseeable is defined as 5-15 years.

Physiographic Province(s) of occurrence for each species reflects both current and historical distribution data and is keyed to the base map on page 2. This map breaks the state into nine distinct biomes based on geologic and vegetative patterns. It is taken from the 1973 publication "Natural Vegetation of Oregon and Washington" by Franklin and Dyrness and was modified by Franklin and Marshall in 1983. Graphics were done by Cathy Macdonald.

Criteria:

The basis for inclusion of any given taxon on these lists is determined via the application of several specific criteria. The most important factors are the total number of known extant populations in Oregon and world-wide and the degree to which they are potentially or actively threatened with destruction. Other criteria include the total number of populations *believed* to be extant in Oregon and world-wide and the number of known populations considered to be securely protected. The taxonomic distinctness of each species has been considered also. Hybrids or questionable undescribed species have not been included. Finally, the position of Oregon within the species' total range (local endemic, regional endemic, or peripheral) has been considered as has its occurrence pattern and the tendency of the species to persist at a given locality.

The special animal species list includes vertebrates and invertebrates. ~~Many experts have been interviewed and consulted in preparation of this publication, and the inclusion and status of each animal has been based in large part on their comments.~~ In general, only species that breed or have critical stop-over locations in Oregon have been included. Unless a given animal is of an especially sensitive or vulnerable nature (e.g., gyrfalcon), accidental or transient species have not been considered.

For convenience, the animal lists are broken down by class. ~~Freshwater fish are the most decimated and most threatened group of vertebrates. The majority of Oregon's waterways have been dammed and diverted, polluted, or damaged by heavy logging and grazing practices. These factors, along with fish control measures and the many introductions of exotic fish, have caused great modifications to the aquatic habitat.~~

The listing of most of the birds is based on the status of nesting populations in the state. Some of these species may otherwise be common seasonally or during migration periods. Because they are so mobile and responsive to climatological variation, the annual status of some birds at any given locale can fluctuate considerably.

A number of open-ocean mammals occur within Oregon's three-mile limit. Because they cannot be protected or monitored based on a system of small geographically fixed areas, they have been excluded from consideration.

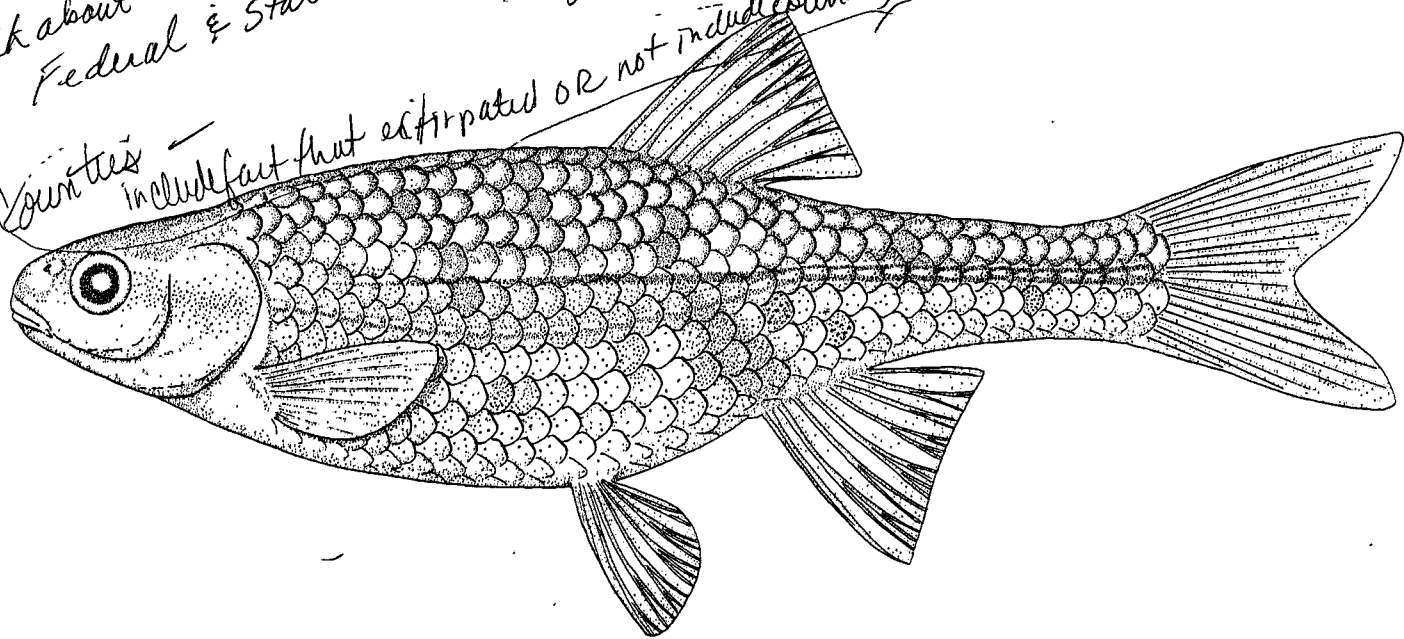
Compilation of the invertebrate list has been especially difficult. Very little is known about the status and distribution of many taxa found in Oregon. If more were known, the list would likely be very different and much longer. Those species which have been studied relatively extensively have received higher priority for inclusion.

Some animals are of concern due to a serious lack of quantitative data on their actual status. These taxa are found on the Review List. They are either rare in collections, uncommonly observed, or difficult to collect information on and may need management attention. Further research is needed to accurately determine their status and protection needs.

include
birds

talk about
Federal & State statuses
define my little
asterisks etc.

Counties
include fact that extirpated OR not include counties

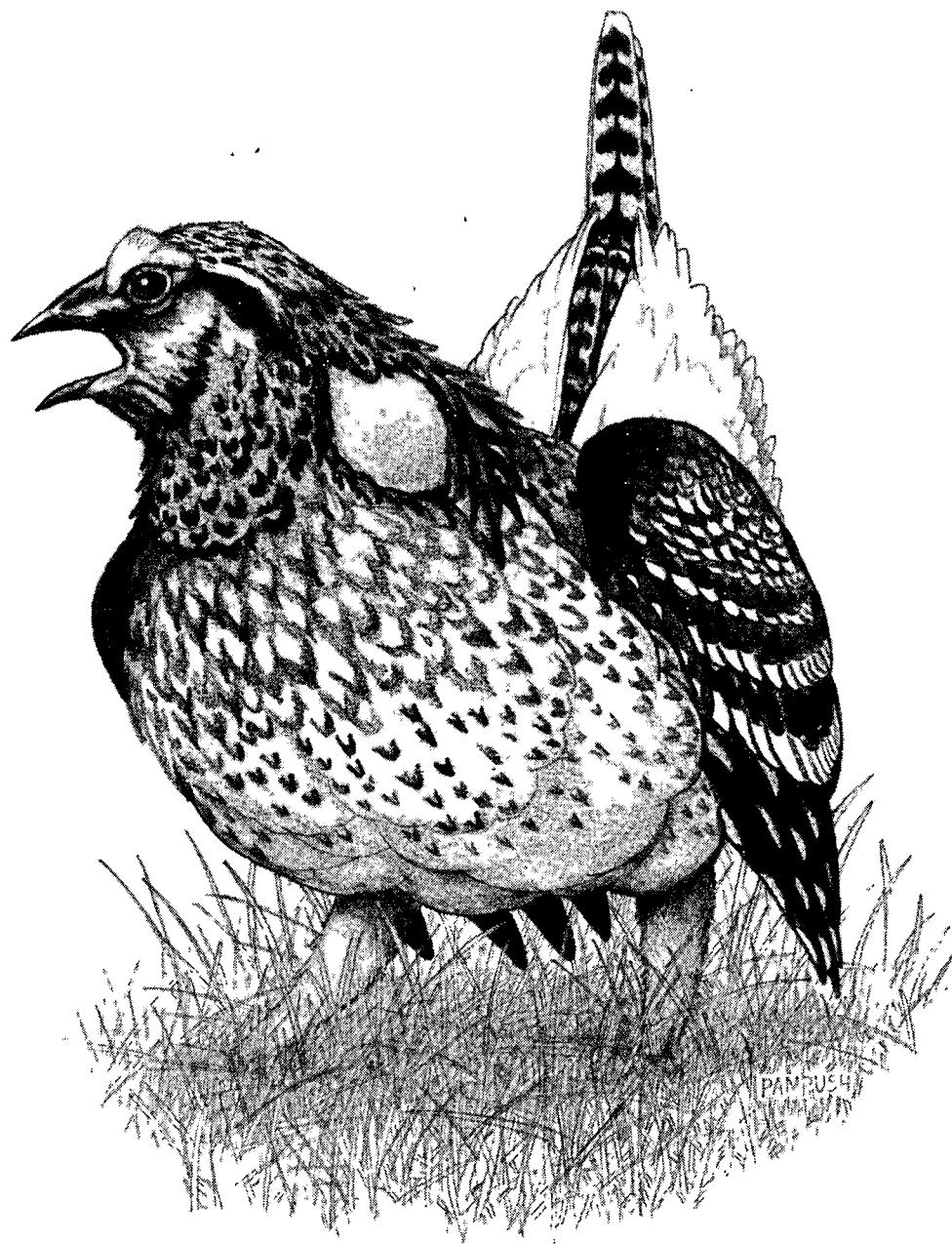


Hybopsis crameri (Oregon chub)
Endemic to Willamette and Umpqua River systems
Drawn by Leonard Coleman

Scientific Name	Common Name	Physiographic Province
TAXA ENDANGERED THROUGHOUT RANGE		
Fish		
<i>Gila boraxobius</i>	Borax chub	B&R
TAXA THREATENED THROUGHOUT RANGE		
Fish		
<i>Catostomus warnerensis</i>	Warner sucker	B&R
<i>Chasmistes brevirostris</i>	short-nosed sucker	ESOC
<i>Gila bicolor ssp.</i>	Hutton Springs tui chub	B&R
<i>Hybopsis crameri</i>	Oregon chub	WOIV, WSOC
<i>Rhinichthys osculus ssp.</i>	Foskett Spring dace	B&R
Birds		
<i>Branta canadensis leucopareia</i>	Aleutian Canada goose*	OCR, SISK)
<i>Falco peregrinus</i>	American peregrine falcon	OCR, SISK, WSOC, B&R
<i>Pelecanus occidentalis</i>	brown pelican*	OCR, SISK
Mammals		
<i>Odocoileus virginianus leucurus</i>	Columbian white-tailed deer	WOIV
<i>Plecotus townsendi townsendi</i>	Townsend's big-eared bat	OCR, WOIV, SISK
Invertebrates		
<i>Apochthonius malheuri</i>	Malheur pseudoscorpion	B&R
<i>Bombus franklini</i>	Franklin's bumblebee	WOIV
<i>Megascolides macelfreshi</i>	Oregon giant earthworm	WOIV
<i>Speyeria zerene hippolyta</i>	Oregon silverspot butterfly	OCR
TAXA APPARENTLY EXTINCT THROUGHOUT RANGE		
Fish		
<i>Gila bicolor ssp.</i>	Summer Basin tui chub	B&R
<i>Lampetra minima</i>	Miller Lake lamprey	ESOC
<i>Salmo clarki ssp.</i>	Alvord cutthroat trout	B&R

Scientific Name	Common Name	Physiographic Province
TAXA THREATENED IN OREGON BUT MORE COMMON OR STABLE ELSEWHERE		
Fish		
<i>Catostomus tahoensis</i>	Tahoe sucker	OU
<i>Cottus pitensis</i>	pit sculpin	B&R
<i>Gila bicolor ssp. eurysoma</i>	Sheldon tui chub	B&R
<i>Richardsonius egregius</i>	Lahontan redbreast	OU
Amphibians and Reptiles		
<i>Clemmys marmorata</i>	western pond turtle	OCR, WOIV, SISK
<i>Lampropeltis getulus</i>	common kingsnake	SISK
Birds		
<i>Bartramia longicauda</i>	upland sandpiper	ESOC, OBW
<i>Coccyzus americanus</i>	yellow-billed cuckoo	WOIV, OBW, HLPCB
<i>Cygnus buccinator</i>	trumpeter swan	B&R
<i>Haliaeetus leucocephalus</i>	bald eagle	ALL
<i>Melanerpes lewis</i>	Lewis' woodpecker	WOIV, SISK, ESOC
<i>Pelecanus erythrorhynchos</i>	white pelican (nesting)	ESOC, B&R
<i>Podiceps grisegena</i>	red-necked grebe (nesting)	ESOC
<i>Sterna caspia</i>	Caspian tern (nesting)	OCR, HLPCB, B&R
<i>Strix occidentalis caurina</i>	northern spotted owl	OCR, SISK, WSOC
<i>Tringa melanoleuca</i>	greater yellowlegs	OBW
<i>Tringa solitaria</i>	solitary sandpiper	WSOC
Mammals		
<i>Enhydra lutris lutris</i>	northern sea otter	OCR, SISK
<i>Euderma maculatum</i>	spotted bat	B&R, HLPCB
<i>Spermophilus washingtoni</i>	Washington ground squirrel	HLPCB
<i>Vulpes macrotis nevadensis</i>	northern kit fox	B&R, OU
Invertebrates		
<i>Agonum belleri</i>	Beller's ground beetle	WSOC
<i>Boloria selene tollandensis</i>	silver-bordered fritillary	OBW
<i>Euphydryas editha taylori</i>	Taylor's checkerspot butterfly	WOIV
<i>Saldula villosa</i>	no common name	OCR
TAXA APPARENTLY EXTIRPATED FROM OREGON		
Fish		
<i>Catostomus microps</i>	Modoc sucker	ESOC
Amphibians and Reptiles		
<i>Rana pretiosa</i>	spotted frog (western Oregon)	ALL
Birds		
<i>Gavia immer</i>	common loon (nesting)	WSOC
<i>Gymnogyps californianus</i>	California condor	OCR, SISK
<i>Tympanuchus phasianellus columbianus</i>	Columbian sharp-tailed grouse	OBW, HLPCB
Mammals		
<i>Bison bison</i>	bison	OBW, B&R, HLPCB, OU
<i>Canis lupus</i>	wolf	ALL
<i>Felis lynx</i>	lynx	OCR, WSOC, ESOC, OBW
<i>Spermophilus richardsoni</i>	Richardson's ground squirrel	B&R, OU
<i>Ursus arctos</i>	grizzly bear	OBW

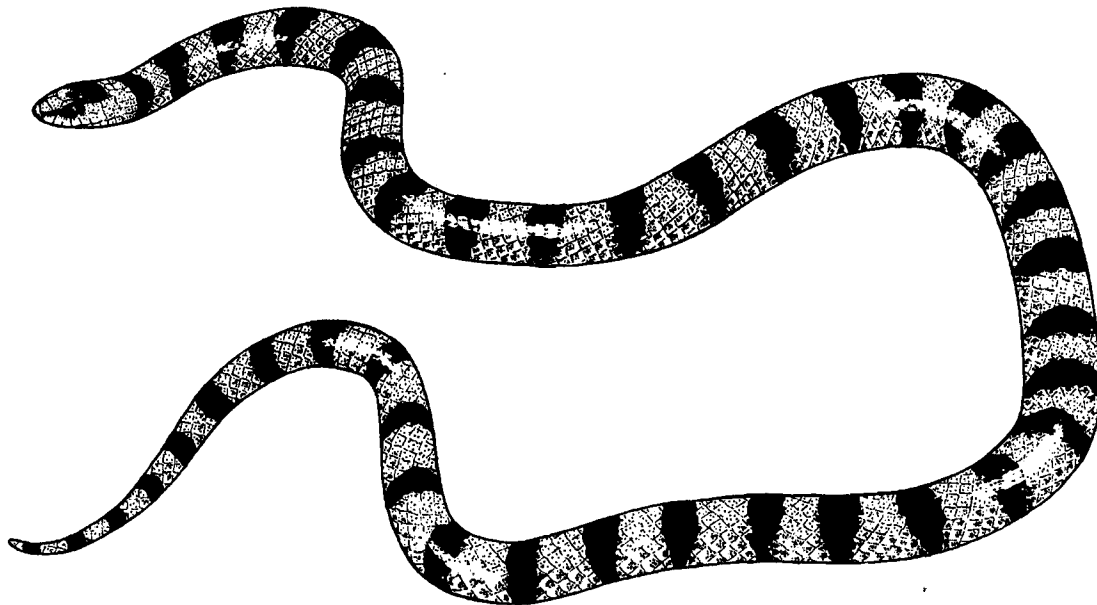
Scientific Name	Common Name	Physiographic Province
Invertebrates		
<i>Cicindela columbica</i>	Columbia tiger beetle	OBW
<i>Conisattus nelsoni</i>	Nelson's ground beetle	HLPCB
<i>Speyeria zerene bremneri</i>	valley silverspot butterfly	WOIV



Tympanuchus phasianellus columbianus
 (Columbian sharp-tailed grouse)
 Formerly common in NE Oregon; last seen 1969
 Drawn by Jon Pampush

Scientific Name	Common Name	Physiographic Province
TAXA LIMITED IN ABUNDANCE IN OREGON OR THROUGHOUT RANGE		
Fish		
<i>Catostomus luxatus</i>	Lost River sucker	ESOC
<i>Catostomus rimiculus</i> ssp.	Jenny Creek sucker	ESOC
<i>Cottus bairdi</i> ssp.	Malheur sculpin	B&R
<i>Gila alvordensis</i>	Alvord chub	B&R
<i>Gila bicolor</i> ssp.	Catlow tui chub	B&R
<i>Gila bicolor</i> ssp. <i>oregonensis</i>	Oregon Lakes tui chub	ESOC, B&R
<i>Hesperoleucus symmetricus</i> ssp. <i>mitrulus</i>	California roach	ESOC, B&R
<i>Lampetra ayresi</i>	river lamprey	OCR, WSOC, ESOC, HLPCB
<i>Rhinichthys evermanni</i>	Umpqua dace	OCR, WOIV
<i>Salmo clarki</i> ssp.	Whitehorse cutthroat trout	B&R
<i>Salvelinus confluentus</i>	Klamath bull trout	ESOC
Amphibians and Reptiles		
<i>Aneides flavipunctatus</i>	black salamander	SISK, WSOC
<i>Batrachoseps attenuatus</i>	California slender salamander	SISK
<i>Batrachoseps wrighti</i>	Oregon slender salamander	WSOC
<i>Lampropeltis zonata</i>	California mountain kingsnake	SISK, ESOC
<i>Plethodon larselli</i>	Larch Mountain salamander	WSOC, ESOC
<i>Plethodon stormi</i>	Siskiyou Mountain salamander	SISK
<i>Sonora semiannulata</i>	western ground snake	OU
Birds		
<i>Agelaius tricolor</i>	tricolored blackbird	WOIV, ESOC
<i>Anser albifrons gambelli</i>	tule white-fronted goose*	ESOC, OBW
<i>Aythya collaris</i>	ring-necked duck (nesting)	WSOC, ESOC, OBW, B&R
<i>Bucephala albeola</i>	bufflehead (nesting)	WSOC
<i>Bucephala islandica</i>	Barrow's goldeneye (nesting)	WSOC
<i>Buteo swainsoni</i>	Swainson's hawk	ESOC, OBW, B&R, HLPCB, OU
<i>Cerorhinca monocerata</i>	rhinoceros auklet	OCR, SISK
<i>Charadrius alexandrinus nivosus</i>	western snowy plover	OCR, B&R
<i>Dendragapus canadensis franklinii</i>	Franklin's spruce grouse	OBW
<i>Egretta thula</i>	snowy egret	ESOC, B&R, OU
<i>Grus canadensis tabida</i>	greater sandhill crane	ESOC, B&R
<i>Himantopus mexicanus</i>	black-necked stilt	ESOC, B&R, HLPCB
<i>Histrionicus histrionicus</i>	harlequin duck (nesting)	SISK, WSOC, OBW
<i>Leucosticte arctoa tephrocotis</i>	Wallowa rosy finch	OBW
<i>Plegadis chihi</i>	white-faced ibis	ESOC, B&R
<i>Polioptila caerulea amoenissima</i>	blue-gray gnatcatcher	WOIV, SISK, B&R
<i>Ptychoramphus aleuticus</i>	Cassin's auklet	OCR, SISK
<i>Sayornis nigricans</i>	black phoebe	SISK
Mammals		
<i>Antrozous pallidus pacificus</i>	Pacific pallid bat	OCR, WOIV, SISK
<i>Bassariscus astutus</i>	ringtail	SISK
<i>Gulo gulo</i>	wolverine	WSOC, ESOC, OBW, B&R
<i>Mirounga angustirostris</i>	northern elephant seal*	OCR, SISK
<i>Ochotona princeps taylori</i>	Taylor's pika	ESOC, B&R
<i>Perognathus longimembris</i>	little pocket mouse	B&R, OU
<i>Sylvilagus idahoensis</i>	pygmy rabbit	OBW, B&R, HLPCB
<i>Tadarida brasiliensis mexicana</i>	Brazilian free-tailed bat	SISK
<i>Thomomys bottae detumidus</i>	Oregon pocket gopher	SISK
<i>Thomomys bottae laticeps</i>	Pacific pocket gopher	SISK

Scientific Name	Common Name	Physiographic Province
Invertebrates		
<i>Acalypta cooleyi</i>	Cooley's tingid	ESOC, OBW
<i>Acetropis oregana</i>	Oregon acetropis	WOIV
<i>Centrophilus perplexus</i>	no common name	WOIV
<i>Cryptocercus punctulatus</i>	wood roach	OCR, WSOC
<i>Grylloblatta</i> ssp. nov.	Mary's Peak ice cricket	OCR
<i>Micrantha fennica</i>	Harney micrantha	B&R
<i>Scaphinotus hatchi</i>	Hatch's snail-eating carabid beetle	WSOC
<i>Tanypteryx hageni</i>	montane bog dragonfly	OCR, WSOC



Sonora semiannulata (western ground snake)
 Nocturnal inhabitant of Oregon desert
 Drawn by Alan D. St. John

Scientific Name	Common Name	Physiographic Province
Fish		
<i>Lampetra richardsoni</i>	western brook lamprey	OCR, WSOC, ESOC, HLPCB
<i>Salmo</i> sp. spp.	Goose Lake redband trout	ESOC, B&R
Amphibians and Reptiles		
<i>Dicamptodon copei</i>	Cope's giant salamander	OCR, OU
<i>Rana pipiens</i>	leopard frog (native populations)	OU, HLPCB
Birds		
<i>Brachyramphus marmoratus</i>	marbled murrelet	OCR, SISK
<i>Coturnicops noveboracensis</i>	yellow rail	ESOC
<i>Cypseloides niger</i>	black swift	WOIV, SISK
<i>Falco columbarius</i>	merlin	SISK, ESOC
<i>Falco rusticolus</i>	gyrfalcon*	WOIV, HLPCB
<i>Ixobrychus exilis</i>	least bittern	ESOC
<i>Podiceps auritus</i>	horned grebe (nesting)	ESOC, OBW, B&R
<i>Strix nebulosa</i>	great gray owl	WSOC, ESOC, OBW
<i>Strix varia</i>	barred owl	WOIV, OBW
Mammals		
<i>Martes pennanti</i>	fisher	OCR, SISK
<i>Myotis thysanodes</i> ssp.	fringed bat	OCR, WOIV, WSOC
<i>Sorex preblei</i>	Malheur shrew	B&R
Invertebrates		
<i>Bembidion tigrinum</i>	cryptic beach carabid beetle	OCR
<i>Malthodes glyphidius</i>	cantharid beetle	OBW
<i>Pterostichus rothi</i>	blind carabid beetle	OCR
<i>Trimerotropis helferi</i>	Helfer's trimerotropis	SISK
<i>Triodopsis populi</i>	Hell's Canyon land snail	OBW

*occur as migrants only; all others: breeding

These plant lists are an update to the 1983 edition of this book. All status changes for specific taxa reflect new information obtained since then. The definitions and categories of List 1 and List 2 remain unchanged from the previous edition. However, the 1983 List 3 category "Taxa Limited in Abundance but Stable in Oregon, and More Common Elsewhere" has been dropped, and most of these species incorporated into a Watch List.

List 1 contains taxa which are endangered or threatened throughout their range or which are presumed extinct. It is largely consistent with the Listed, Category 1 and Category 2 species from the U.S. Fish and Wildlife Service Federal Notice of Review. These species need active protection measures to insure their survival.

List 2 contains species which are threatened, endangered or possibly extirpated from the state of Oregon. These species are more common or stable outside of Oregon but are in need of some protection in Oregon.

List 3 has been changed to make the list more useful and consistent. It now includes only those species which are limited in distribution or rare throughout their entire range — but which are thought to be currently stable. These taxa are statewide or regional endemics which are local or limited enough to require monitoring of Oregon populations.

The Review List contains species for which more information is needed before status can be determined, but which may be threatened or endangered in Oregon or throughout their range.

As a result of changes to List 3, we have included a Watch List in this edition. Watch List species are those which are currently stable but which may become threatened in Oregon in the foreseeable future. These species currently do not need active management attention. However, they may need some type of continued monitoring.

The Drop List is a complete list of taxa which have been dropped from consideration since the publication of the 1979 Interim Report, "Rare, Threatened, and Endangered Vascular Plants in Oregon", by Siddall, Chambers, and Wagner. These taxa have been dropped either because they have been determined to be invalid, or because they are too common or secure to warrant inclusion on this list. This cumulative Drop List will be included in this edition only and is provided primarily for reference use. In future editions, the Drop List will include only those species which have been dropped since the last publication.

The Oregon Natural Heritage Data Base is interested in obtaining and computerizing all occurrence data for species on Lists 1, 2 and 3. Manual files are maintained on all Review and Watch List taxa. It is essential that additional information be obtained on Review List taxa so that accurate status determinations can be made. Some of these species may be in need of immediate protection, while others should be dropped. Information on the status of Watch List species would be appreciated. As new information is obtained regarding all the taxa listed herein, the status of individual species will change. The plant lists will be updated as necessary to reflect those changes.



Ranunculus reconditus (Dalles Mt. buttercup)
Possibly extinct in Oregon
Drawn by Julie Kierstead

Scientific Name	Common Name	Physiographic Province
-----------------	-------------	------------------------

TAXA ENDANGERED THROUGHOUT RANGE

<i>Abronia umbellata</i> Lam. ssp. <i>breviflora</i> (Standl.) Munz	pink sandverbena	OCR, SISK
<i>Amsinckia carinata</i> Nels. & Macbr.	Malheur Valley fiddleneck	OU
<i>Arabis koehleri</i> How. var. <i>koehleri</i>	Koehler's rockcress	WOIV
<i>Arenaria franklinii</i> Dougl. ex Hook. var. <i>thompsonii</i> Peck [POEX]	Thompson's sandwort	HLPCB
<i>Artemisia campestris</i> L. ssp. <i>borealis</i> (Pall.) Hall & Clem. var. <i>wormskioldii</i> (Bess.) Cronq. [POEX]	northern wormwood	HLPCB
<i>Artemisia ludoviciana</i> Nutt. ssp. <i>estesii</i> Chamb.	Estes' artemisia	ESOC, HLPCB
<i>Aster vialis</i> (Brads.) Blake	wayside aster	WOIV
<i>Astragalus applegatei</i> Peck	Applegate's milk-vetch	ESOC
<i>Astragalus robbinsii</i> (Oakes) Gray var. <i>alpiniformis</i> (Rydb.) Barneby	Wallowa milk-vetch	OBW
<i>Astragalus sterilis</i> Barn.	sterile milk-vetch	OU
<i>Botrychium pumicola</i> Cov. in Underw.	pumice grape-fern	ESOC
<i>Castilleja levisecta</i> Greenm. [POEX]	golden paintbrush	WOIV
<i>Erigeron decumbens</i> Nutt. var. <i>decumbens</i>	Willamette daisy	WOIV
<i>Eriogonum scopulorum</i> Reveal	cliff eriogonum	OBW
<i>Fritillaria gentneri</i> Gilkey	Gentner's fritillaria	SISK
<i>Hackelia cronquistii</i> J. L. Gentry	Cronquist's stickseed	OU
<i>Haplopappus radiatus</i> (Nutt.) Cronq.	Snake River goldenweed	OBW
<i>Hastingsia bracteosa</i> Wats. = <i>Schoenolirion bracteosum</i>	large-flowered rush-lily	SISK
<i>Howellia aquatilis</i> Gray [POEX]	howellia	WOIV
<i>Ivesia rhypara</i> Ertter & Reveal	grimy ivesia	B&R, OU
<i>Lilium occidentale</i> Purdy	western lily	OCR, SISK
<i>Limnanthes floccosa</i> How. ssp. <i>pumila</i> (Howell) Arroyo	dwarf meadow-foam	WOIV
<i>Lomatium bradshawii</i> (Rose) Math. & Const.	Bradshaw's lomatium	WOIV
<i>Lomatium "cookii"</i> , sp. nov. in ed.	Agate Desert lomatium	WOIV
<i>Lomatium erythrocarpum</i> Meinke & Const.	red-fruited lomatium	OBW
<i>Lomatium greenmanii</i> Mathias	Greenman's lomatium	OBW
<i>Lomatium nelsonianum</i> Macb.	Nelson's desert parsley	SISK
<i>Luina serpentina</i> Cronq.	colonial luina	OBW, HLPCB
<i>Lupinus aridus</i> Dougl. ex Lindl. ssp. <i>ashlandensis</i> Cox	Mt. Ashland lupine	SISK
<i>Lupinus cusickii</i> Wats.	Cusick's lupine	OBW, B&R, OU
<i>Mentzelia mollis</i> Peck	smooth mentzelia	OU
<i>Mentzelia packardiae</i> Glad	Packard's mentzelia	OU
<i>Mirabilis macfarlanei</i> Const. & Roll.	Macfarlane's four-o'clock	OBW
<i>Perideridia erythrorhiza</i> (Piper) Chuang & Const.	red-root yampah	WOIV, WSOC, ESOC
<i>Plagiobothrys hirtus</i> (Greene) Johnst. var. <i>hirtus</i>	rough allocarya	WOIV
<i>Pleuropogon oregonus</i> Chase	Oregon semaphoregrass	B&R, OBW
<i>Ranunculus reconditus</i> Nels. & Macbr.	Dalles Mt. buttercup	ESOC, HLPCB
<i>Rorippa columbiae</i> (Robins.) How. = <i>R. calycina</i> var. <i>columbiae</i>	Columbia cress	WOIV, WSOC, ESOC, B&R, HLPCB
<i>Senecio ertterae</i> Barkley	Ertter's senecio	OU
<i>Sidalcea nelsoniana</i> Piper	Nelson's sidalcea	WOIV
<i>Sidalcea setosa</i> C. L. Hitchc. ssp. <i>querceta</i> C. L. Hitchc.	Oak Flat sidalcea	SISK
<i>Silene douglasii</i> Hook. var. <i>oraria</i> (Peck) C. L. Hitchc. & Maguire	Cascade Head catchfly	OCR

Scientific Name	Common Name	Physiographic Province
<i>Stephanomeria malheurensis</i> Gottlieb	Malheur wire lettuce	B&R
<i>Thelypodium eucosmum</i> Robins.	arrow-leaf thelypod	OBW, HLPCB
<i>Thelypodium howellii</i> Wats. ssp. <i>spectabilis</i> (Peck) Al-Shehbaz	Howell's spectacular thelypod	OBW, B&R, OU
TAXA THREATENED THROUGHOUT RANGE		
<i>Agrostis microphylla</i> Steud. var. <i>hendersonii</i> (A.S. Hitchc.) Beetle [POEX]	Henderson's bentgrass	WOIV
<i>Arabis "macdonaldiana"</i>	Red Mt. rockcress	SISK
<i>Aster curtus</i> Cronq. [E]	white-topped aster	WOIV
<i>Aster gormanii</i> (Piper) Blake	Gorman's aster	WSOC
<i>Astragalus collinus</i> Dougl. ex Hook. var. <i>laurentii</i> (Rydb.) Barneby	Lawrence's milk-vetch	HLPCB
<i>Astragalus diaphanus</i> Dougl.	transparent milk-vetch	HLPCB
<i>Astragalus mulfordae</i> M. E. Jones [E]	Mulford's milk-vetch	OBW, OU
<i>Astragalus peckii</i> Piper	Peck's milk-vetch	ESOC
<i>Astragalus solitarius</i> Peck	weak milk-vetch	B&R, OU
<i>Astragalus tegetarioides</i> M. E. Jones	Deschutes milk-vetch	OBW
<i>Astragalus tyghensis</i> Peck	Tygh Valley milk-vetch	HLPCB
<i>Balsamorhiza sericea</i> Weber = <i>B. platylepis</i>	silky balsamroot	SISK
<i>Calochortus greenii</i> Wats. [E]	Green's mariposa-lily	SISK, WSOC
<i>Calochortus howellii</i> Wats.	Howell's mariposa-lily	SISK, WSOC
<i>Calochortus longebarbatus</i> Wats. var. <i>longebarbatus</i>	long-bearded mariposa-lily	ESOC, B&R
<i>Cardamine pattersonii</i> Hend.	Saddle Mt. bittercress	OCR
<i>Carex scabriuscula</i> Mack.	Cascade sedge	SISK, WSOC
<i>Castilleja chlorotica</i> Piper	green-tinged paintbrush	OBW
<i>Collomia mazama</i> Coville	Mt. Mazama collomia	WSOC, ESOC
<i>Delphinium leucophaeum</i> Greene	white rock larkspur	WOIV
<i>Delphinium pavonaceum</i> Ewan	peacock larkspur	WOIV
<i>Dodecatheon "austrofrigidum"</i> , sp. nov.	frigid shootingstar	OCR
<i>Draba howellii</i> Wats.	Howell's whitflow-grass	SISK
<i>Draba lemmonii</i> Wats. var. <i>cyclomorpha</i> (Payson) Schulz	Wallowa draba	OBW
<i>Epilobium oreganum</i> Greene	Oregon willow-herb	SISK
<i>Eriogonum crosbyae</i> Reveal	Crosby's buckwheat	B&R
<i>Eriogonum cusickii</i> M. E. Jones	Cusick's eriogonum	B&R
<i>Eriogonum prociduum</i> Reveal	prostrate buckwheat	ESOC, B&R
<i>Erythronium elegans</i> Hammond & Chamb.	Coast Range fawn-lily	OCR
<i>Gentiana bisetata</i> How.	Waldo gentian	SISK
<i>Gentiana "plurisetosa"</i> , sp. nov.	bristly gentian	SISK
<i>Gratiola heterosepala</i> Mason & Bacig.	Boggs Lake hedge-hyssop	B&R
<i>Horkelia hendersonii</i> How.	Henderson's horkelia	SISK
<i>Kalmiopsis leachiana</i> (Henderson) Rehd. var. nov.	North Umpqua kalmiopsis	WSOC
<i>Lepidium davisii</i> Rollins [E]	Davis' peppergrass	OU
<i>Leptodactylon hazelae</i> Peck	Hazel's prickly-phlox	OBW
<i>Lewisia cotyledon</i> (Wats.) Robins. var. <i>purdyi</i> Jeps.	Purdy's lewisia	SISK
<i>Limnanthes floccosa</i> How. ssp. <i>bellingiana</i> (Peck) Arroyo	Bellinger's meadow-foam	WOIV, WSOC
<i>Limnanthes floccosa</i> How. ssp. <i>grandiflora</i> Arroyo	big-flowered wooly meadow-foam	WOIV

Scientific Name	Common Name	Physiographic Province
<i>Limnanthes gracilis</i> How. var. <i>gracilis</i>	slender meadow-foam	WOIV
<i>Lomatium oregonum</i> (Coul. & Rose) Coul. & Rose	Oregon lomatium	OBW
<i>Lomatium rollinsii</i> Math. & Const.	Rollins' lomatium	OBW
<i>Lupinus biddlei</i> Hend. ex C. P. Smith	Biddle's lupine	B&R, OU
<i>Microseris howellii</i> Gray	Howell's microseris	WOIV, SISK
<i>Mimulus clivicola</i> Greenm. [E]	bank monkeyflower	OBW
<i>Mimulus hymenophyllus</i> Meinke	membrane-leaved monkeyflower	OBW
<i>Mimulus jungermannioides</i> Suksd.	hepatic monkeyflower	HLPCB
<i>Mimulus patulus</i> Penn.	stalked-leaved monkeyflower	OBW
<i>Mimulus pygmaeus</i> Grant	pigmy monkeyflower	WSOC, ESOC
<i>Mimulus washingtonensis</i> Gand. var. <i>washingtonensis</i>	Washington monkeyflower	OBW
<i>Myosurus minimus</i> L. ssp. <i>apus</i> (Greene) Campbell var. <i>sessiliflorus</i> (Huth) Campbell = <i>M. sessilis</i> [E]	sessile mousetail	HLPCB
<i>Oenothera wolfii</i> (Munz) Raven, Dietrich & Stuble	Wolf's evening-primrose	SISK
<i>Penstemon barrettiae</i> Gray	Barrett's penstemon	WSOC, ESOC
<i>Penstemon spatulatus</i> Penn.	Wallowa penstemon	OBW
<i>Phacelia argentea</i> Nels. & Macbr.	silvery phacelia	SISK
<i>Phacelia lutea</i> (Hook. & Arn.) J. T. Howell var. <i>mackenzieorum</i> Grimes & Packard	Mackenzie's phacelia	OU
<i>Saxifraga hitchcockiana</i> Elvander = <i>S. occidentalis</i> var. <i>latipetiolata</i>	Saddle Mt. saxifrage	OCR
<i>Sedum moranii</i> Clausen	Rogue River stonecrop	SISK
<i>Senecio hesperius</i> Greene	western senecio	SISK
<i>Silene scaposa</i> Robins. var. <i>scaposa</i>	scapose catchfly	OBW
<i>Silene spaldingii</i> Wats. [E]	Spalding's campion	OBW
<i>Streptanthus howellii</i> Wats.	Howell's streptanthus	SISK
<i>Tauschia howellii</i> (Coul. & Rose) Macbr. [E]	Howell's tauschia	SISK
<i>Trifolium leibergii</i> Nels. & Macbr.	Leiberg's clover	B&R
<i>Trifolium owyheense</i> Gilkey	Owyhee clover	OU

**TAXA WHICH ARE POSSIBLY EXTINCT (POEX),
NOT RELOCATED SINCE 1960**

<i>Arabis suffrutescens</i> Wats. var. <i>horizontalis</i> (Greene) Rollins	Crater Lake rockcress	WSOC, ESOC
<i>Astragalus kentrophyta</i> Gray var. <i>douglasii</i> Barneby	Douglas' milk-vetch	HLPCB
<i>Calochortus indecorus</i> Ownbey & Peck	Sexton Mt. mariposa-lily	SISK
<i>Eriogonum chrysops</i> Rydb.	golden buckwheat	B&R
<i>Plagiobothrys hirtus</i> (Greene) Johnst. var. <i>corallicarpus</i> (Piper) Johnst.	coral seeded allocarya	WOIV
<i>Plagiobothrys lamprocarpus</i> (Piper) Johnst.	shiny-fruited allocarya	WOIV
<i>Synthyris missurica</i> (Raf.) Penn. ssp. <i>hirsuta</i> Penn.	mountain kittentails	WOIV, WSOC

[E] = Endangered in Oregon, [POEX] = Possibly extinct in Oregon

Scientific Name	Common Name	Physiographic Province
TAXA ENDANGERED IN OREGON BUT MORE COMMON OR STABLE ELSEWHERE		
<i>Agoseris elata</i> (Nutt.) Greene	tall agoseris	WSOC, ESOC; Bent,
<i>Allium geoyeri</i> Wats. var. <i>geoyeri</i>	Geyer's onion	OBW
<i>Anemone oregana</i> Gray var. <i>felix</i> (Peck) C.L. Hitchc.	bog anemone	OCR
<i>Arabis crucisetosa</i> Const. & Roll.	cross-haired rockcress	OBW
<i>Asplenium septentrionale</i> (L.) Hoffm.	grass-fern	WSOC
<i>Asplenium viride</i> Huds.	green spleenwort	OBW
<i>Astragalus atratus</i> Wats. var. <i>owyheensis</i> (Nels. & Macbr.) Jones	Owyhee milk-vetch	OBW, OU
<i>Astragalus calycosus</i> Torr.	King's rattleweed	B&R
<i>Balsamorhiza rosea</i> Nels. & Macbr.	rosy balsamroot	HLPCB
<i>Brodiaea laxa</i> (Benth.) Wats. = <i>Triteleia l.</i>	Ithuriel's spear	SISK
<i>Brodiaea terrestris</i> Kell.	dwarf brodiaea	SISK
<i>Cheilanthes feei</i> Moore	Fee's lipfern	OBW
<i>Cheilanthes intertexta</i> Maxon	coastal lipfern	SISK
<i>Clintonia andrewsiana</i> Torr.	Andrew's bead-lily	SISK
<i>Cordylanthus maritimus</i> Nutt. ex Benth. ssp. <i>palustris</i> (Behr) Chuang & Heckard	salt-marsh bird's-beak	OCR
<i>Cupressus bakeri</i> Jeps.	Baker's cypress	SISK
<i>Dicentra pauciflora</i> Wats.	few-flowered bleedingheart	SISK
<i>Downingia insignis</i> Greene	downingia	OU
<i>Epilobium siskiyouense</i> (Munz) P.C. Hoch & Raven	Siskiyou willow-herb	SISK
<i>Erigeron engelmannii</i> A. Nels. var. <i>davisii</i> Cronq.	Engelmann's daisy	OBW
<i>Eriogonum incanum</i> T. & G.	white dwarf eriogonum	SISK
<i>Eschscholzia caespitosa</i> Benth.	gold poppy	SISK
<i>Fritillaria camschatcensis</i> (L.) Ker-Gawl	indian rice	WSOC
<i>Gentiana tenella</i> Rottb.	slender gentian	B&R
<i>Geum triflorum</i> Pursh var. <i>campanulatum</i> (Greene) C.L. Hitchc.	western red avens	OCR
<i>Habenaria obtusata</i> (Banks ex Pursh) Richards.	small northern bog-orchid	OBW
<i>Hackelia ophiobia</i> Carr	Three Forks stickseed	OU
<i>Haplopappus arborescens</i> (Gray) Hall	golden fleece	SISK
<i>Hydrocotyle verticillata</i> Thurb.	whorled marsh pennywort	SISK
<i>Hymenoxys cooperi</i> (Gray) Cockerell var. <i>canescens</i> (D.C. Eat.) Parker	Cooper's goldflower	B&R, OU
<i>Lilium rubescens</i> Wats.	lilac lily	SISK
<i>Lomatium engelmannii</i> Mathias	Engelmann's desert-parsley	SISK
<i>Lomatium farinosum</i> (Geyer ex Hook.) Coult. & Rose var. <i>hambleniae</i> (Const. & Math.) Schlessman	Hamblen's lomatium	HLPCB
<i>Lomatium tracyi</i> Math. & Const.	Tracy's lomatium	SISK
<i>Lomatium watsonii</i> Coult. & Rose	Watson's desert-parsley	ESOC, HLPCB
<i>Lupinus tracyi</i> Eastw.	Tracy's lupine	SISK
<i>Mimulus latidens</i> (Gray) Greene	broad-toothed monkeyflower	B&R
<i>Navarretia heterandra</i> Mason	Tehama navarretia	WOIV
<i>Ophioglossum vulgatum</i> L.	adder's-tongue	OCR, WSOC
<i>Pellaea andromedaefolia</i> (Kaulf.) Fee	coffee fern	WOIV, WSOC
<i>Perideridia howellii</i> (Coult. & Rose) Math.	Howell's false-caraway	WOIV, SISK, WSOC, ESOC
<i>Phlox hendersonii</i> (E. Nels.) Cronq.	Henderson's phlox	WSOC
<i>Phlox multiflora</i> A. Nels.	many-flowered phlox	OBW

Handwritten note: "P. 20 STABLE"

Scientific Name	Common Name	Physiographic Province
<i>Pilularia americana</i> A. Br.	American pillwort	WOIV, B&R
<i>Plagiobothrys salsus</i> (Brandeg.) Johnst.	desert allocarya	B&R
<i>Poa kelloggii</i> Vasey	Kellogg's bluegrass	OCR
<i>Potamogeton diversifolius</i> Raf.	Rafinesque's pondweed	B&R
<i>Ranunculus oresterus</i> Benson	Blue Mt. buttercup	OBW
<i>Salix delnortensis</i> Schneid.	Del Norte willow	WOIV, SISK
<i>Salix laevigata</i> Bebb	polished willow	ESOC
<i>Saxifraga adscendens</i> L. var. <i>oregonensis</i> (Raf.) Breit.	wedge-leaf saxifrage	OBW, SISK
<i>Sidalcea hendersonii</i> Wats.	Henderson's sidalcea	OCR
<i>Sidalcea malachroides</i> (H. & A.) Gray	maple-leaved sidalcea	SISK
<i>Sidalcea malvaeflora</i> (DC.) Gray ex Benth. ssp. <i>patula</i> C.L. Hitchc.	spreading checkermallow	SISK
<i>Silene hookeri</i> Nutt. ssp. <i>bolanderi</i> (Gray) Abrams	Bolander's catchfly	SISK
<i>Stylocline psilocarphoides</i> Peck	Malheur stylocline	B&R, OU
<i>Suksdorfia violacea</i> Gray	violet suksdorfia	ESOC
<i>Tauschia stricklandii</i> (Coult. & Rose) Math. & Const.	Strickland's tauschia	WSOC
<i>Thalictrum alpinum</i> L. var. <i>hebetum</i> Boiv.	alpine meadowrue	OBW
<i>Trollius laxus</i> Salisb. var. <i>albiflorus</i> Gray	American globeflower	OBW

TAXA THREATENED IN OREGON BUT MORE COMMON OR STABLE ELSEWHERE

<i>Allenrolfea occidentalis</i> (Wats.) Ktze.	iodine bush	B&R, OU
<i>Allium bolanderi</i> Wats.	Bolander's onion	SISK
<i>Allium brandegei</i> Wats.	Brandege's onion	OBW, OU
<i>Allium campanulatum</i> Wats.	Sierra onion	ESOC, OBW, B&R
<i>Arabis modesta</i> Rollins	Rogue Canyon rockcress	SISK
<i>Arabis sparsiflora</i> Nutt. var. <i>atrorubens</i> (Greene) Rollins	sickle-pod rockcress	WSOC, ESOC
<i>Argemone munita</i> Dur. & Hig. ssp. <i>rotundata</i> (Rydb.) G. Ownbey	prickly-poppy	B&R, OU
<i>Arnica viscosa</i> Gray	Shasta arnica	WSOC, ESOC
<i>Artemisia papposa</i> Blake & Cronq.	Owyhee sagebrush	OU
<i>Astragalus umbraticus</i> Sheld.	woodland milk-vetch	WOIV, SISK, WSOC
<i>Betula papyrifera</i> Marsh. var. <i>commutata</i> (Regel) Fern.	paper birch	OBW
<i>Botrychium boreale</i> Milde	northern grape-fern	OBW, B&R
<i>Botrychium lanceolatum</i> (Gmel.) Angstrom	lance-leaved grape-fern	WSOC, ESOC, OBW, B&R
<i>Botrychium "lunaria", sp. nov.</i>	moonwort	WSOC, ESOC, OBW, B&R
<i>Botrychium simplex</i> E. Hitchc.	little grape-fern	WSOC, ESOC, OBW, B&R
<i>Brodiaea hendersonii</i> (Greene) S. Wats. var. <i>leachiae</i> (Peck) Hoover = <i>Triteleia h.</i> var. <i>l.</i>	Leach's brodiaea	SISK
<i>Brodiaea ida-maia</i> (Wood) Greene = <i>Dichelostemma i.</i>	firecracker flower	WOIV, SISK, WSOC
<i>Bupleurum americanum</i> Coult. & Rose	bupleurum	OBW
<i>Calamagrostis breweri</i> Thurber	Brewer's reedgrass	WSOC, ESOC
<i>Carex concinna</i> R. Br.	low northern sedge	OBW
<i>Carex limnophila</i> Hermann	pond sedge	OBW
<i>Carex macrochaeta</i> C.A. Mey.	Alaskan long-awned sedge	OCR
<i>Chaenactis macrantha</i> D.C. Eat.	large-flowered chaenactis	B&R, OU
<i>Chaenactis stevioides</i> H. & A.	broad-flowered chaenactis	B&R, OU
<i>Corallorhiza trifida</i> Chat.	early coral-root	OBW
<i>Cymopterus bipinnatus</i> Wats.	Hayden's cymopterus	OBW, B&R

Scientific Name	Common Name	Physiographic Province
<i>Cymopterus purpurascens</i> (Gray) Jones	purple cymopterus	B&R, OU
<i>Cypripedium fasciculatum</i> Kell.	clustered lady's-slipper	SISK, OBW
<i>Dentaria gemmata</i> (Greene) How.	purple toothwort	SISK
<i>Dryopteris filix-mas</i> (L.) Schott	male fern	OCR, OBW, OU
<i>Dudleya farinosa</i> (Lindl.) Britt. & Rose	sea-cliff stonecrop	SISK
<i>Epilobium rigidum</i> Hausskn.	rigid willow-herb	SISK
<i>Erigeron peregrinus</i> (Pursh) Greene	wandering daisy	OCR
ssp. <i>peregrinus</i> var. <i>peregrinus</i>		
<i>Erigeron petrophilus</i> Greene	cliff daisy	SISK
<i>Eriogonum ochrocephalum</i> Wats.	ochre-flowered buckwheat	OBW, B&R, OU
ssp. <i>calcareum</i> (Stokes) Peck		
<i>Erythronium howellii</i> Wats.	Howell's adder's-tongue	WOIV, SISK
<i>Fritillaria glauca</i> Greene	Siskiyou fritillaria	WOIV, SISK, WSOC
<i>Gentiana newberryi</i> Gray	Newberry's gentian	WSOC, ESOC
<i>Gentiana prostrata</i> Haenke in Jacq.	moss gentian	B&R
<i>Geum rossii</i> (R. Br.) Ser. var. <i>turbinatum</i> (Rydb.) C.L. Hitchc.	slender-stemmed avens	OBW
<i>Haplopappus whitneyi</i> Gray ssp. <i>discoideus</i> (J.T. Howell) Keck	Whitney's haplopappus	SISK
<i>Hieracium bolanderi</i> Gray	Bolander's hawkweed	SISK, WSOC, ESOC
<i>Iliamna latibracteata</i> Wiggins	California globe-mallow	SISK
<i>Kobresia myosuroides</i> (Vill.) Fiori = <i>K. bellardii</i>	Bellard's kobresia	OBW, B&R
<i>Lathyrus delnorticus</i> C.L. Hitchc.	Del Norte pea	SISK
<i>Lewisia columbiana</i> (How.) Robins. var. <i>columbiana</i>	Columbia lewisia	WSOC, ESOC
<i>Lewisia columbiana</i> (How.) Robins. var. <i>rupicola</i> (Engl.) C.L. Hitchc.	rosy lewisia	OCR
<i>Lewisia leana</i> (Porter) Robins.	Lee's lewisia	SISK
<i>Lewisia oppositifolia</i> (Wats.) Robins.	opposite-leaved lewisia	WOIV, SISK
<i>Lycopodium annotinum</i> L.	stiff club-moss	WSOC, ESOC, OBW
<i>Lycopodium complanatum</i> L.	ground cedar	WSOC, ESOC
<i>Lycopodium inundatum</i> L.	bog club-moss	OCR, WSOC
<i>Lycopodium selago</i> L.	fir club-moss	WSOC
<i>Melica stricta</i> Bol.	nodding melic	B&R
<i>Microcala quadrangularis</i> (Willd.) Griseb.	microcala	WOIV
<i>Microseris bigelovii</i> (Gray) Schultz-Bip.	coast microseris	OCR, SISK
<i>Mimulus douglasii</i> (Benth. in DC.) Gray	Douglas' monkeyflower	SISK
<i>Mimulus jepsonii</i> Grant	Jepson's monkeyflower	SISK, WSOC, ESOC
<i>Mimulus kelloggii</i> (Curran ex Greene) Gray	Kellogg's monkeyflower	SISK
<i>Mimulus tricolor</i> Hartw. ex Lindl.	three-colored monkeyflower	WOIV, ESOC
<i>Monardella purpurea</i> How.	Siskiyou monardella	SISK
<i>Muhlenbergia minutissima</i> (Steud.) Swallen	annual dropseed	OBW, OU
<i>Oryzopsis hendersonii</i> Vasey = <i>Stipa h.</i>	Henderson's ricegrass	OBW, HLPCB
<i>Pellaea bridgesii</i> Hook.	Bridges' cliffbrake	OBW
<i>Phacelia gymnoclada</i> Torr. = <i>P. crassifolia</i>	naked-stemmed phacelia	B&R
<i>Pinus flexilis</i> James	limber pine	OBW, B&R
<i>Poa laxiflora</i> Buckl.	loose-flowered bluegrass	OCR, WSOC
<i>Poa marcida</i> A.S. Hitchc.	weak bluegrass	OCR, WSOC
<i>Poa piperi</i> A.S. Hitchc.	Piper's bluegrass	SISK
<i>Polystichum californicum</i> (D.C. Eat.) Diels	California sword-fern	OCR, SISK, WSOC
<i>Polystichum lemmonii</i> Underw.	Shasta fern	SISK
<i>Potentilla glandulosa</i> Lindl. ssp. <i>globosa</i> Keck	globose cinquefoil	SISK
<i>Primula cusickiana</i> Gray	Wallowa primrose	OBW

Scientific Name	Common Name	Physiographic Province
<i>Ribes marshallii</i> Greene	Marshall's gooseberry	SISK
<i>Salix bebbiana</i> Sarg.	Bebb's willow	OBW
<i>Salix vestita</i> Pursh	rock willow	OBW
<i>Saxifraga oppositifolia</i> L.	purple saxifrage	OBW
<i>Scribneria bolanderi</i> (Thurb.) Hack.	Scribner's grass	ESOC, HLPCB
<i>Sedum spathulifolium</i> Hook. ssp. <i>purdyi</i> (Jeps.) Clausen	Purdy's stonecrop	SISK, WSOC
<i>Senecio flettii</i> Weigand	Flett's groundsel	OCR
<i>Sesuvium verrucosum</i> Raf.	verrucose sea-purslane	B&R
<i>Silene nuda</i> (Wats.) C.L. Hitchc. & Maguire ssp. <i>insectivora</i> (Hend.) C.L. Hitchc. & Maguire	fringed campion	ESOC
<i>Smelowskia calycina</i> (Desv.) C. Mey.	alpine smelowskia	OBW
<i>Smilax californica</i> (DC.) Gray	California smilax	SISK
<i>Stipa speciosa</i> Trin. & Rupr.	desert needlegrass	B&R, OU
<i>Streptopus streptopoides</i> (Ledeb.) Frye & Rigg	kruhsea	WSOC
<i>Sullivantia oregana</i> Wats.	Oregon sullivantia	WOIV, WSOC
<i>Symphoricarpos longiflorus</i> Gray	long-flowered snowberry	B&R
<i>Talinum spinescens</i> Torr.	talinum	HLPCB
<i>Thelypodium brachycarpum</i> Torr.	short-podded thelypody	ESOC
<i>Viola lanceolatum</i> L. ssp. <i>occidentalis</i> (Gray) Russell = <i>V. occidentalis</i>	western bog violet	SISK

Cryptogams

<i>Agrestia hispida</i>	lichen	B&R, OU
<i>Calliergon stramineum</i>	moss	OCR
<i>Calliergon trifarium</i>	moss	OCR
<i>Calypogeja sphagnicola</i>	liverwort	OCR
<i>Campylopus atrovirens</i>	moss	OCR, SISK
<i>Diplophyllum plicatum</i>	liverwort	OCR
<i>Erioderma solediatum</i>	lichen	OCR
<i>Heterodermia leucomelaena</i>	lichen	OCR
<i>Lophozia laxa</i>	liverwort	OCR, WSOC
<i>Pohlia sphagnicola</i>	moss	OCR
<i>Radula brunnea</i>	liverwort	OCR
<i>Scapania gymnostomophila</i>	liverwort	WSOC, ESOC
<i>Sciaromium tricostatum</i>	moss	OCR
<i>Splachnum ampullaceum</i>	moss	ESOC
<i>Teloschistes flavicans</i>	lichen	OCR
<i>Umbilicaria phaea</i> var. <i>coccinea</i>	lichen	ESOC

TAXA APPARENTLY EXTIRPATED FROM OREGON

<i>Allium robinsonii</i> Hend.	Robinson's onion	HLPCB
<i>Allium tribracteatum</i> Torr.	three-bracted onion	OU
<i>Androsace elongata</i> L. ssp. <i>acuta</i> (Greene) Robb.	long-stemmed androsace	WOIV
<i>Cicuta bulbifera</i> L.	bulb-bearing waterhemlock	ESOC
<i>Cryptantha leucophaea</i> (Dougl.) Pays.	gray cryptantha	HLPCB
<i>Cypripedium calceolus</i> L. var. <i>parviflorum</i> (Salisb.) Fern.	yellow lady's-slipper	ESOC
<i>Erigeron decumbens</i> Nutt. var. <i>robustior</i> Cronq.	big Willamette daisy	WOIV, SISK, ESOC
<i>Eriogonum diclinum</i> Reveal	James Canyon buckwheat	SISK
<i>Habenaria orbiculata</i> (Pursh) Torr.	large round-leaved bog-orchid	OBW
<i>Kobresia simpliciuscula</i> (Wahl.) Mack.	simple kobresia	OBW
<i>Lilium parvum</i> Kell.	small tiger lily	SISK

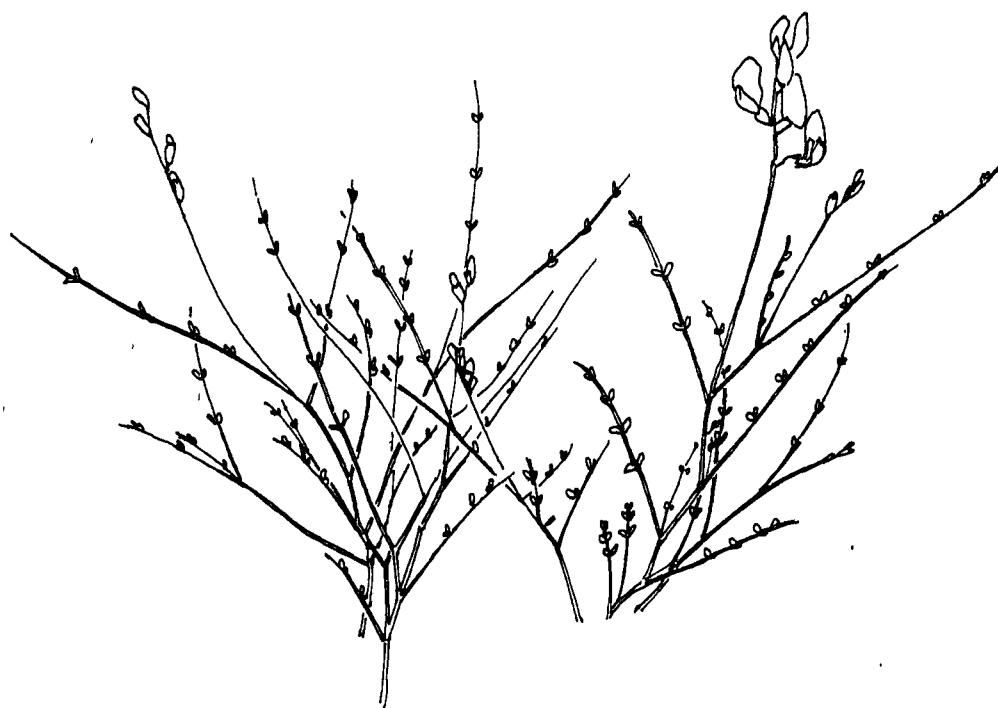
Scientific Name	Common Name	Physiographic Province
<i>Lobelia dortmanna</i> L.	water lobelia	ESOC
<i>Lomatium ravenii</i> Math. & Const.	Raven's lomatium	ESOC, B&R
<i>Lomatium salmoniflorum</i> (Coul. & Rose) Math. & Const.	salmon-flowered lomatium	OBW, HLPCB
<i>Lupinus sericeus</i> Pursh var. <i>egglestonianus</i> C.P. Smith	silky lupine	HLPCB
<i>Meconella californica</i> Torr.	California meconella	SISK
<i>Microseris douglasii</i> (DC.) Schultz-Bip. ssp. <i>douglasii</i>	Douglas' microseris	SISK
<i>Mirabilis greenei</i> Wats.	Siskiyou four-o'clock	SISK
<i>Nemacladus capillaris</i> Greene	slender nemacladus	SISK, WSOC, ESOC
<i>Phacelia leonis</i> J.T. Howell	Leo's phacelia	SISK
<i>Phacelia malvaefolia</i> Cham.	mallow-leaved phacelia	SISK
<i>Phacelia minutissima</i> Henderson	dwarf phacelia	OBW
<i>Plantago macrocarpa</i> Cham. & Schlecht.	North Pacific plantain	OCR
<i>Potamogeton fibrillosus</i> Fern.	fibrous pondweed	B&R
<i>Potentilla villosa</i> Pall. ex Pursh var. <i>parviflora</i> C.L. Hitchc.	villous cinquefoil	WSOC, ESOC
<i>Salix tracyi</i> Ball	Tracy's willow	WOIV, SISK
<i>Senecio porteri</i> Greene	Porter's butterweed	OBW



Sidalcea campestris (meadow sidalcea)
Willamette Valley endemic
Drawn by Jay Miner

Scientific Name	Common Name	Physiographic Province
TAXA LIMITED IN ABUNDANCE THROUGHOUT RANGE BUT CURRENTLY STABLE		
<i>Agastache cusickii</i> (Greenm.) Heller var. <i>cusickii</i>	Cusick's giant-hyssop	B&R, OU
<i>Agrostis howellii</i> Scribn.	Howell's bentgrass	WOIV, WSOC, ESOC
<i>Allium madidum</i> Wats.	swamp onion	OBW
<i>Allium pleianthum</i> Wats.	many-flowered onion	HLPCB
<i>Allium tolmiei</i> Baker ex Wats. var. <i>platyphyllum</i> (Tidestom) Ownbey	flat-leaved Tolmie's onion	OBW
<i>Arabis furcata</i> Wats.	Cascade rockcress	WSOC, ESOC
<i>Arabis koehleri</i> How. var. <i>stipitata</i> Rollins	Koehler's stipitate rockcress	SISK
<i>Arctostaphylos hispidula</i> How.	hairy manzanita	SISK
<i>Artemisia packardiae</i> Grimes & Ertter	Packard's artemisia	OU
<i>Asarum wagneri</i> Lu & Mesler = <i>A. caudatum</i> var. <i>viridiflorum</i>	green-flowered wild-ginger	SISK, WSOC, ESOC
<i>Astragalus hoodianus</i> How.	Hood River milk-vetch	ESOC, HLPCB
<i>Astragalus howellii</i> Gray var. <i>howellii</i>	Howell's milk-vetch	ESOC, HLPCB
<i>Astragalus reventus</i> Gray var. <i>reventus</i>	Blue Mt. milk-vetch	OBW
<i>Bensoniella oregona</i> (Abr. & Bacig.) Morton	bensonia	SISK
<i>Bolandra oregana</i> Wats.	Oregon bolandra	WSOC, ESOC, OBW
<i>Calochortus longebarbatus</i> Wats. var. <i>peckii</i> Ownbey	Peck's mariposa-lily	OBW
<i>Campanula scabrella</i> Engelm.	rough harebell	WSOC, ESOC, OBW
<i>Castilleja rubida</i> Piper	purple alpine paintbrush	OBW
<i>Castilleja steenensis</i> Penn.	Steens Mt. paintbrush	B&R
<i>Castilleja xanthotricha</i> Penn.	yellow-haired paintbrush	HLPCB
<i>Chaenactis cusickii</i> Gray	Cusick's chaenactis	OU
<i>Chaenactis nevii</i> Gray	Nevius' chaenactis	HLPCB
<i>Cirsium ciliolatum</i> (Hend.) J.T. Howell	Ashland thistle	SISK, WSOC
<i>Collomia macrocalyx</i> Leib. ex Brand.	bristle-flowered collomia	OBW, HLPCB
<i>Corydalis aquae-gelidae</i> Peck & Wilson	cold-water corydalis	WSOC
<i>Cryptantha propria</i> (Nels. & Macbr.) Pays.	Malheur cryptantha	OU
<i>Cypripedium californicum</i> Gray	California lady's-slipper	SISK
<i>Draba aureola</i> Wats.	golden alpine draba	WSOC, ESOC
<i>Draba sphaeroides</i> Payson var. <i>cusickii</i> (B.L. Robins.) C.L. Hitchc.	Cusick's draba	B&R
<i>Erigeron cascadenis</i> Heller	Cascade daisy	WSOC
<i>Erigeron cervinus</i> Greene	Siskiyou daisy	SISK
<i>Erigeron chrysopsidis</i> Gray var. <i>brevifolius</i> Piper	dwarf golden daisy	OBW
<i>Erigeron howellii</i> (Gray) Gray	Howell's daisy	WSOC, ESOC
<i>Erigeron oreganus</i> Gray	Oregon daisy	WSOC, ESOC
<i>Eriogonum salicornioides</i> Gandog.	playa buckwheat	OU
<i>Eriogonum ternatum</i> How.	Waldo buckwheat	SISK
<i>Filipendula occidentalis</i> (Wats.) How.	queen-of-the-forest	OCR
<i>Frasera umpquaensis</i> Peck & Appleg.	Umpqua swertia	SISK, WSOC
<i>Heuchera grossularifolia</i> Rydb. var. <i>grossularifolia</i>	gooseberry-leaved alumroot	OBW, HLPCB
<i>Hieracium longiberbe</i> How.	long-bearded hawkweed	WSOC, ESOC
<i>Lasthenia macrantha</i> (Gray) Greene ssp. <i>prisca</i> Ornduff	large-flowered goldfields	SISK
<i>Lathyrus holochlorus</i> (Piper) C.L. Hitchc.	thin-leaved peavine	WOIV
<i>Lesquerella kingii</i> Wats. ssp. <i>diversifolia</i> (Greene) Rollins & Shaw	King's bladderpod	OBW
<i>Lomatium laevigatum</i> (Nutt.) Coult. & Rose	smooth desert parsley	HLPCB
<i>Lomatium "pastoralis",</i> sp. nov.	meadow lomatium	OBW

Scientific Name	Common Name	Physiographic Province
<i>Lomatium suksdorfii</i> (Wats.) Coult. & Rose	Suksdorf's lomatium	ESOC
<i>Lupinus burkei</i> Wats. ssp. <i>caeruleomontanus</i> Dunn & Cox	Blue Mt. lupine	OBW
<i>Lupinus lyallii</i> Gray ssp. <i>minutifolius</i> (Eastw.) Cox	small-leaved lupine	B&R
<i>Lupinus sabinii</i> Dougl. ex Hook.	Sabine's lupine	OBW
<i>Microseris detlingii</i> Chamb.	Detling's microseris	SISK
<i>Pedicularis howellii</i> Gray	Howell's lousewort	SISK
<i>Penstemon davidsonii</i> Greene var. <i>praeteritus</i> Cronq.	Davidson's penstemon	B&R
<i>Penstemon eriantherus</i> Pursh var. <i>argillosus</i> M.E. Jones	John Day penstemon	HLPCB
<i>Penstemon glaucinus</i> Penn.	blue-leaved penstemon	ESOC, B&R
<i>Penstemon peckii</i> Penn.	Peck's penstemon	ESOC
<i>Phacelia verna</i> How.	spring phacelia	WOIV, WSOC
<i>Ranunculus austro-oreganus</i> Benson	southern Oregon buttercup	WOIV
<i>Ribes irriguum</i> Dougl.	inland black gooseberry	OBW, HLPCB
<i>Romanzoffia "thompsonii"</i> , sp. nov.	Thompson's mistmaiden	WSOC
<i>Rubus bartonianus</i> Peck	Bartonberry	OBW
<i>Sedum laxum</i> (Britt.) Berger ssp. <i>heckneri</i> (Peck) Clausen	Heckner's stonecrop	SISK
<i>Sidalcea campestris</i> Greene	meadow sidalcea	WOIV
<i>Sidalcea cusickii</i> Piper	Cusick's checkermallow	WSOC
<i>Sidalcea hirtipes</i> C.L. Hitchc.	bristly-stemmed sidalcea	OCR
<i>Sidalcea setosa</i> C.L. Hitchc. ssp. <i>setosa</i>	bristly sidalcea	WOIV, SISK
<i>Sophora leachiana</i> Peck	western sophora	SISK
<i>Thlaspi montanum</i> L. var. <i>siskiyouense</i> P. Holmgren	Siskiyou Mt. pennycress	SISK



Astragalus sterilis (sterile milk-vetch)
Malheur County endemic
Drawn by Julie Kierstead

- Allium peninsulare*
Anemone multifida var. *tetonensis*
Antennaria arcuata
Antirrhinum kingii
Arabis davidsonii
Arenaria howellii
Artemisia rothrockii
Asclepias cryptoceras
Aster brickelliioides
Aster glaucescens
Astragalus accidens var. *hendersonii*
Astragalus eucosmus
Astragalus reventus var. *canbyi*
Astragalus sclerocarpus
Botrychium crenulatum
Botrychium montanum
Calamagrostis crassiglumis
Callitriche marginata
Camassia howellii
Camissonia graciliflora
Camissonia ovata
Camissonia palmeri
Camissonia pygmaea
Carex gigas
Carex livida
Carex nova
Castilleja miniata var. *dixonii*
Castilleja rupicola
Caulanthus pilosus
Clematis columbiana var. *columbiana*
Cochlearia officinalis ssp. *oblongifolia*
Corydalis caseana var. *cusickii*
Coryphantha vivipara
Crepis modocensis var. *modocensis*
Cryptantha humilis
Cryptantha leiocarpa
Cryptantha milobakeri
Cryptantha rostellata
Cryptantha simulans
Cryptantha spiculifera
Cryptantha thompsonii
Cymopterus acaulis var. *greeleyorum*
Cymopterus watsonii
Cyperus rivularis
Cyperus schweinitzii
Delphinium nuttallii
Delphinium oreganum
Downingia laeta
Downingia montana
Downingia yina var. *yina*
Equisetum fluviatile
Erigeron disparipilus
Eriogonum hirtellum
Eriogonum lobbii
Eriogonum nutans
Eriogonum umbellatum
 var. *glaberrimum*
Eriogonum umbellatum
 var. *hausknechtii*
Eriophorum chamissonis
Eriophorum polystachion
Erysimum concinnum
Frasera albicaulis var. *idahoensis*
Fritillaria falcata
Galium serpenticum var. *warnerense*
Gilia capitata ssp. *chamissonis*
Hackelia diffusa var. *cottonii*
Hackelia diffusa var. *diffusa*
Hackelia hispida
Hackelia patens
Hedysarum boreale
Heteranthera dubia
Hieracium canadense
Hieracium greenei
Hieracium horridum
Hieracium parryi
Hieracium umbellatum
Hymenopappus filifolius var. *filifolius*
Impatiens aurella
Isoetes spp.
Juncus abjectus
Juncus gerardii
Juncus supiniformis
Langloisa punctata
Lesquerella douglasii
Lilaea scilloides
Lilium kelloggii
Linanthus bakeri
Lindernia anagallidea
Lithophragma campanulata
Lloydia serotina
Lophocarpus californicus
Lupinus lyallii ssp. *subpandens*
Lupinus sulphureus var. *kincaidii*
Luzula subcongesta
Machaerocarpus californicus
Malacothrix glabrata
Malacothrix torreyi
Meconella oregana
Minuartia austromontana
Montia diffusa
Navarretia leucocephala
Navarretia tagetina
Nicotiana bigelovii
Oxytropis occidentalis
Oxytropis cf. *sericea*
Pedicularis centranthera
Penstemon deustus var. *variabilis*
Penstemon kingii
Penstemon pratensis
Petrophytum caespitosum
Phacelia inundata
Plagiobothrys glyptocarpus
Poa pattersonii
Poa suksdorfii
Ranunculus verecundus
Ribes klamathense
Ribes wolfii
Rubus acaulis
Salix orestera
Saxifraga fragarioides
Scheuchzeria palustris var. *americana*
Scirpus cyperinus
Sedum obtusatum ssp. *retusum*
Sedum radiatum ssp. *ciliolum*
Sidalcea malvaeflora ssp. *elegans*
Silene grayi
Sisyrinchium hitchcockii
Spiranthes porrifolia
Stellaria humifusa
Townsendia montana
Townsendia parryi
Utricularia intermedia
Utricularia minor

Allium bisceptrum
Allium douglasii var. *nevii*
Allium lemmonii
Allium macrum
Allium platycaule
Allium unifolium
Arabis aculeolata
Arenaria californica
Astragalus alvordensis
Astragalus succumbens
Astragalus tetrapterus
Botrychium virginianum
Camassia cusickii
Carex haydeniana
Castilleja glandulifera
Caulanthus crassicaulis
Claytonia nevadensis
Claytonia umbellata
Collomia debilis var. *larsenii*
Cypripedium montanum
Darlingtonia californica
Dicentra formosa var. *oregana*
Dryas drummondii
Dryas octopetala
Elmera racemosa var. *puberulenta*
Eriogonum pendulum
Eritrichium nanum
Erythronium revolutum
Haplopappus uniflorus ssp. *linearis*
Heuchera grossularifolia
 var. *tenuifolia*
Hulsea algida
Lewisia columbiana var. *wallowensis*
Lewisia cotyledon var. *howellii*
Lilium wigginsii
Lomatium cusickii
Lomatium peckianum
Microseris acuminata
Mimulus pulsiferae
Mirabilis bigelovii var. *retrorsa*
Nama lobbii
Orthocarpus cuspidatus
 var. *cuspidatus*
Pediocactus simpsonii var. *robustior*
Phacelia capitata
Phacelia corymbosa
Polemonium viscosum
Polystichum kruckebergii
Populus angustifolia
Ranunculus andersonii
Rhinanthus crista-galli
Ribes cereum var. *colubrinum*
Sagittaria latifolia
Salix arctica
Salix brachycarpa

Salix cascadiensis
Salix drummondiana
Sedum debile
Sedum oblanceolatum
Selaginella watsonii
Silene suksdorfii
Smelowskia ovalis var. *ovalis*
Synthyris schizantha
Synthyris stellata
Trillium kurabayashii
Vaccinium oxycoccus var. *intermedium*
Vancouveria chrysantha

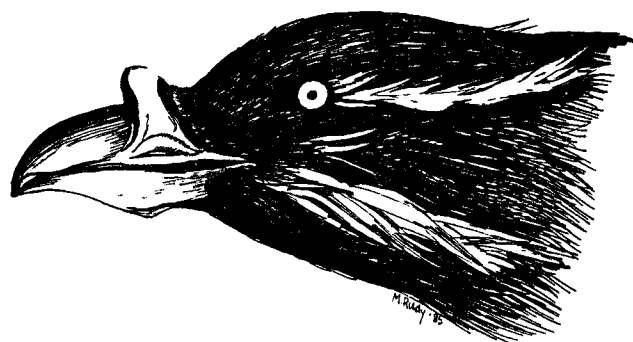


Cypripedium montanum (mountain lady's-slipper)
 Wide-ranging but possibly declining
 Drawn by Julie Kierstead

- Adiantum jordanii*
Alisma gramineum
Allium anceps
Allium fibrillum
Allium nevadense
Allium punctum
Antennaria suffrutescens
Arabis breweri
Arabis oregana
Arabis serpentinicola
Arenaria pumicola
Arnica amplexicaulis var. *piperi*
Arnica cernua
Artemisia lindleyana
Artemisia tripartita
Aster hallii
Aster siskiyouensis
Astragalus accidens var. *accidens*
Astragalus arthuri
Astragalus cusickii var. *cusickii*
Astragalus iodanthus var. *vipereus*
Astragalus misellus
Astragalus nudisiliquus
Astragalus purshii var. *ophiogenes*
Astragalus tweedyi
Astragalus vallis
Astragalus yoder-williamsii
Balsamorhiza hirsuta
Bergia texana
Botrychium dusenii
Botrychium minganense
Brodiaea dissimulata
Calamagrostis howellii
Calochortus bruneanus
Calochortus nuttallii
Camassia leichtlinii var. *leichtlinii*
Cardamine penduliflora
Carex interrupta
Castilleja brevilobata
Castilleja elata
Castilleja oresbia
Castilleja ownbeyana
Chaenactis douglasii var. *glandulosa*
Chaetodelpha wheeleri
Chrysothamnus nauseosus var. *nanus*
Cimicifuga laciniata
Cirsium acanthodontum
Cirsium brevifolium
Cirsium peckii
Cladanthus pyrolaeflorus
Cordylanthus viscidus
Crepis bakeri var. *cusickii*
Cryptogramma stelleri
Dodecatheon dentatum
Dodecatheon poeticum
Douglasia laevigata
Empetrum nigrum
Ephedra nevadensis
Ephedra viridis
Erigeron delicatus
Erythronium citrinum
Erythronium klamathense
Fritillaria adamantina
Fritillaria recurva
Gymnosteris nudicaulis
Haplopappus racemosus var. *congestus*
Hemitomes congestus
Horkelia daucifolia
Hydrophyllum capitatum
 var. *thompsonii*
Isoetes howellii
Isoetes nuttallii
Isopyrum hallii
Kalmiopsis leachiana
Lasthenia minor var. *maritima*
Leucothoe davisiae
Lilium bolanderi
Lilium vollmeri
Listera borealis
Lomatium columbianum
Lomatium frenchii
Lomatium howellii
Lomatium serpentinum
Lupinus latifolius var. *thompsonianus*
Lupinus mucronulatus
Lupinus uncialis
Lycopodium obscurum
Myosurus clavicaulis
Nemacladus rigidus
Orobanche pinorum
Parnassia fimbriata var. *hoodiana*
Pedicularis bracteosa var. *pachyrhiza*
Pedicularis densiflora
Pellaea brachyptera
Penstemon elegantulus
Penstemon euglaucus
Penstemon fruticosus var. *serratus*
Penstemon glandulosus
Penstemon newberryi var. *berryi*
Penstemon payettensis
Penstemon seorsus
Penstemon subserratus
Phacelia peckii
Phacelia ramosissima var. *eremophila*
Phlox colubrina
Phlox peckii
Pityopus californica
Pleuricospora fimbriolata
Poa gracillima var. *multnomae*
Polygonum heterosepalum
Polystichum andersonii
Potentilla glandulosa
 var. *campanulata*
Ranunculus lobbii
Ribes cognatum
Ribes watsonianum
Romanzoffia tracyi
Salix fluviatilis
Salix wolfii var. *idahoensis*
Sanicula peckiana
Sanicula tracyi
Sanicula tuberosa
Sarcodes sanguinea
Scoliopus hallii
Sedum laxum var. *laxum*
Sedum radiatum var. *dapauperatum*
Sidalcea malvaeflora ssp. *nana*
Silene douglasii var. *monantha*
Silene hookeri ssp. *pulverulenta*
Silene scaposa var. *lobata*
Suksdorfia ranunculifolia
Tauschia glauca
Tiarella laciniata
Townsendia scapigera
Trifolium howellii
Vancouveria planipetala
Viola canadensis var. *rugulosa*
Viola douglasii
Viola ocellata
Zauschneria latifolia

- Acalypta coolyeyi* 9
Acetropis oregana 9
Agelaius tricolor 8
Agonum belleri 6
Aneides flavipunctatus 8
Anser albifrons gambelli 8
Antrozous pallidus pacificus 8
Apochthonius malheuri 5
Auklet
 Cassin's 8
 rhinoceros 8
Aythya collaris 8
Bartramia longicauda 6
Bassariscus astutus 8
Bat
 Brazilian free-tailed 8
 fringed 10
 Pacific pallid 8
 spotted 6
 Townsend's big-eared 5
Batrachoseps
 attenuatus 8
 wrighti 8
Bear, grizzly 6
Beetle
 Beller's ground 6
 cantharid 10
 Columbia tiger 7
 cryptic beach carabid 10
 Hatch's snail-eating carabid 9
 blind carabid 10
 Nelson's ground 7
Bembidion tigrinum 10
Bison 6
Bison bison 6
Bittern, least 10
Blackbird, tricolored 8
Boloria selene tollandensis 6
Bombus franklini 5
Brachyramphus marmoratus 10
Branta canadensis leucopareia 5
Bucephala
 albeola 8
 islandica 8
Bufflehead 8
Bumblebee, Franklin's 5
Buteo swainsoni 8
Butterfly
 Oregon silverspot 5
 silver-bordered fritillary 6
 Taylor's checkerspot 6
 valley silverspot 7
Canis lupus 6
Catostomus
 luxatus 8
 microps 6
 rimiculus ssp. 8
 tahoensis 6
 warnerensis 5
Centrophilus perplexus 9
Cerorhinca monocerata 8
Charadrius alexandrinus nivosus 8
Chasmistes brevirostris 5
Chub
 Alvord 8
 Borax 5
 Catlow tui 8
 Hutton Springs tui 5
 Oregon 5
 Oregon Lakes tui 8
 Sheldon tui 6
 Summer Basin tui 5
Cincindela columbica 7
Clemmys marmorata 6
Coccyzus americanus 6
Condor, California 6
Conisattus nelsoni 7
Cottus
 bairdi ssp. 8
 pitensis 6
Coturnicops noveboracensis 10
Crane, greater sandhill 8
Cricket, Mary's Peak ice 9
Cryptocercus punctulatus 9
Cuckoo, yellow-billed 6
Cygnus buccinator 6
Cypseloides niger 10
Dace
 Foskett Spring 5
 Umpqua 8
Dendragapus canadensis franklinii 8
Deer, Columbian white-tailed 5
Dicamptodon copei 10
Dragonfly, montane bog 9
Duck
 harlequin 8
 ring-necked 8
Eagle, bald 6
Earthworm, Oregon giant 5
Egret, snowy 8
Egretta thula 8
Enhydra lutris lutris 6
Euderma maculatum 6
Euphydryas editha taylori 6
Falco
 columbarius 10
 peregrinus 5
 rusticolus 10
Falcon, American peregrine 5
Felis lynx 6
Finch, Wallowa rosy 8
Fisher 10
Fox, northern kit 6
Frog
 leopard 10
 spotted 6
Gavia immer 6
Gila
 alvordensis 8
 bicolor ssp. 5, 8
 bicolor ssp. *eurysoma* 6
 bicolor ssp. *oregonensis* 8
 boraxobius 5
Gnatcatcher, blue-gray 8
Gopher
 Oregon pocket 8
 Pacific pocket 8
Goldeneye, Barrow's 8
Goose
 Aleutian Canada 5
 tule white-fronted 8
Grebe
 horned 10
 red-necked 6
Grouse
 Columbian sharp-tailed 6
 Franklin's spruce 8
Grus canadensis tabida 8
Grylloblatta sp. nov. 9
Gulo gulo 8
Gymnogyps californianus 6
Gyrfalcon 10
Haliaeetus leucocephalus 6
Hawk, Swainson's 8
Hesperoleucus symmetricus
 ssp. *mitrulus* 8
Himantopus mexicanus 8
Histrionicus histrionicus 8
Hybopsis cramerii 5
Ibis, white-faced 8
Ixobrychus exilis 10
Kingsnake
 California mountain 8
 common 6
Lampetra
 ayresi 8
 minima 5
 richardsoni 10
Lamprey
 Miller Lake 5
 river 8
 western brook 10
Lampropeltis
 getulus 6
 zonata 8
Leucosticte arctoa tephrocotis 8
Loon, common 6
Lynx 6
Malthodes glyphidius 10
Martes pennanti 10

- Megascolides macelfreshi* 5
Melanerpes lewis 6
 Merlin 10
Micrantha fennica 9
Mirounga angustirostris 8
 Mouse, little pocket 8
 Murrelet, marbled 10
Myotis thysanodes ssp. 10
Ochotona princeps taylori 8
Odocoileus virginianus leucurus 5
 Otter, northern sea 6
 Owl
 barred 10
 great gray 10
 northern spotted 6
Pelecanus
 erythrorhyncos 6
 occidentalis 5
 Pelican
 brown 5
 white 6
Perognathus longimembris 8
 Phoebe, black 8
 Pika, Taylor's 8
Plecotus townsendi townsendi 5
Plegadis chihi 8
Plethodon
 larselli 8
 stormi 8
 Plover, western snowy 8
Podiceps
 auritus 10
 griseogen 6
Polioptila caerulea amoenissima 8
Pseudoscorpion, Malheur 5
Pterostichus rothi 10
Ptychoramphus aleuticus 8
 Rabbit, pygmy 8
 Rail, yellow 10
Rana
 pipiens 10
 pretiosa 6
 Redside, Lahontan 6
Rhinichthys
 evermanni 8
 osculus ssp. 5
Richardsoni *egregius* 6
 Ringtail 8
 Roach
 California 8
 wood 9
 Salamander
 black 8
 California slender 8
 Cope's giant 10
 Larch Mountain 8
 Oregon slender 8
 Siskiyou Mountain 8
Saldula villosa 6
Salmo
 clarki ssp. 5, 8
 ssp. 10
Salvelinus confluentus 8
 Sandpiper
 solitary 6
 upland 6
Sayornis nigricans 8
Scaphinotus hatchi 9
 Sculpin
 Malheur 8
 pit 6
 Seal, northern elephant 8
 Shrew, Malheur 10
 Snail, Hell's Canyon land 10
 Snake, western ground 8
Sonora semiannulata 8
Sorex preblei 10
Spermophilus
 richardsoni 6
 washingtoni 6
Speyeria
 zerene bremneri 7
 zerene hippolyta 5
 Squirrel
 Richardson's ground 6
 Washington ground 6
Sterna caspia 6
 Stilt, black-necked 8
Strix
 nebulosa 10
 occidentalis caurina 6
 varia 10
 Sucker
 Jenny Creek 8
 Lost River 8
 Modoc 6
 short-nosed 5
 Tahoe 6
 Warner 5
 Swan, trumpeter 6
 Swift, black 10
Sylvilagus idahoensis 8
Tadarida brasiliensis mexicana 8
Tanypteryx hageni 9
 Tern, Caspian 6
Thomomys
 bottae detumidus 8
 bottae laticeps 8
 Tingid, Cooley's 9
Trimerotropis helferi 10
Tringa
 melanoleuca 6
 solitaria 6
Triodopsis populi 10
 Trout
 Alvord cutthroat 5
 Goose Lake redband 10
 Klamath bull 8
 Whitehorse cutthroat 8
 Turtle, western pond 6
Tympanuchus phasianellus
 columbianus 6
Ursus arctos 6
Vulpes macrotis nevadensis 6
 Wolf 6
 Wolverine 8
 Woodpecker, Lewis' 6
 Yellowlegs, greater 6



Cerorhinca monocerata (rhinoceros auklet)
 Drawn by Maggie Rudy

- ABRONIA
 umbellata
 breviflora 12
 ADIANTUM
 jordanii 24
 AGASTACHE
 cusickii
 cusickii 20
 AGOSERIS
 elata 15
 AGRESTIA
 hispidula 18
 AGROSTIS
 howellii 20
 microphylla
 hendersonii 13
 ALISMA
 gramineum 24
 ALLENROLFEA
 occidentalis 16
 ALLIUM
 anceps 24
 bisceptrum 23
 bolanderi 16
 brandegei 16
 campanulatum 16
 douglasii
 nevii 23
 fibrillum 24
 geyeri
 geyeri 15
 lemmonii 23
 macrum 23
 madidum 20
 nevadense 24
 peninsulare 22
 platycaule 23
 pleianthum 20
 punctum 24
 robinsonii 18
 tolmiei
 platyphyllum 20
 tribracteatum 18
 unifolium 23
 AMSINCKIA
 carinata 12
 ANDROSACE
 elongata
 acuta 18
 ANEMONE
 multifida
 tetonensis 22
 oregana
 felix 15
 ANTENNARIA
 arcuata 22
 suffrutescens 24
 ANTIRRHINUM
 kingii 22
 ARABIS
 aculeolata 23
 breweri 24
 crucisetosa 15
 davidsonii 22
 furcata 20
 koehleri
 koehleri 12
 koehleri
 stipitata 20
 "macdonaldiana" 13
 modesta 16
 oregana 24
 serpentinicola 24
 sparsiflora
 atrorubens 16
 suffrutescens
 horizontalis 14
 ARCTOSTAPHYLOS
 hispidula 20
 ARENARIA
 californica 23
 franklinii
 thompsonii 12
 howellii 22
 pumicola 24
 ARGEMONE
 munita
 rotundata 16
 ARNICA
 amplexicaulis
 piperi 24
 cernua 24
 viscosa 16
 ARTEMISIA
 campestris
 borealis
 wormskioldii 12
 lindleyana 24
 ludoviciana
 estesii 12
 packardiae 20
 papposa 16
 rothrockii 22
 tripartita 24
 ASARUM
 (*caudatum*
 viridiflorum) 20
 wagneri 20
 ASCLEPIAS
 cryptoceras 22
 ASPLENIUM
 septentrionale 15
 viride 15
 ASTER
 brickellioides 22
 curtus 13
 glaucescens 22
 gormanii 13
 hallii 24
 siskiyouensis 24
 vialis 12
 ASTRAGALUS
 accidens
 accidens 24
 accidens
 hendersonii 22
 alvordensis 23
 applegatei 12
 arthuri 24
 atratus
 owyheensis 15
 calycosus 15
 collinus
 laurentii 12
 cusickii
 cusickii 24
 diaphanus 12
 eucosmus 22
 hoodianus 20
 howellii
 howellii 20
 iodanthus
 vipereus 24
 kentrophyta
 douglasii 14
 misellus 24
 mulfordae 13
 nudisiliquus 24
 peckii 13
 purshii
 ophiogenes 24
 reventus
 canbyi 22
 reventus
 reventus 20
 robbinsii
 alpiniformis 12
 sclerocarpus 22
 sheldonii 24
 solitarius 13
 sterilis 12
 succumbens 23
 tegetarioides 13
 tetrapterus 23
 tweedyi 24
 tyghensis 13
 umbraticus 16
 vallis 24
 yoder-williamsii 24
 BALSAMORHIZA
 hirsuta 24
 (*platylepis*) 13
 rosea 15
 sericea 13
 BENSONIELLA
 oregona 20
 BERGIA
 texana 24
 BETULA
 papyrifera
 commutata 16
 BOLANDRA
 oregana 20
 BOTRYCHIUM
 boreale 16
 crenulatum 22
 dusenii 24
 lanceolatum 16
 lunaria 16
 minganense 24
 montanum 22
 pumicola 12
 simplex 16
 virginianum 23
 BRODIAEA
 crocea 22
 dissimulata 24
 hendersonii
 leachiae 16
 ida-maia 16
 laxa 15
 terrestris 15
 BUPLEURUM
 americanum 16
 CALAMAGROSTIS
 breweri 16
 crassiglumis 22
 howellii 24
 CALLIERGON
 stramineum 18
 trifarium 18
 CALLITRICHE
 marginata 22
 CALOCHORTUS
 bruneauensis 24
 greenei 13
 howellii 13
 indecorus 14
 longebarbatus
 longebarbatus 13
 longebarbatus
 peckii 20
 nuttallii 24
 CALYPOGEJA
 sphagnicola 18
 CAMASSIA
 cusickii 23
 howellii 22
 leichtlinii
 leichtlinii 24

- CAMISSONIA
graciliflora 22
ovata 22
palmeri 22
pygmaea 22
CAMPANULA
scabrella 20
CAMPYLOPUS
atrovirens 18
CARDAMINE
pattersonii 13
penduliflora 24
CAREX
concinna 16
gigas 22
haydeniana 23
interrupta 24
limnophila 16
livida 22
macrochaeta 16
nova 22
scabriuscula 13
CASTILLEJA
breviobata 24
chlorotica 13
elata 24
fraterna 13
glandulifera 23
levisecta 12
miniata
dixonii 22
oresbia 24
ownbeyana 24
rubida 20
rupicola 22
steenensis 20
xanthotricha 20
CAULANTHUS
crassicaulis 23
pilosus 22
CHAENACTIS
cusickii 20
douglasii
glandulosa 24
macrantha 16
nevii 20
steviooides 16
CHAETADELPHA
wheeleri 24
CHEILANTHES
feei 15
intertexta 15
CHRYSOTHAMNUS
nauseosus
nanus 24
CICUTA
bulbifera 18
CIMICIFUGA
laciniata 24
CIRSIUM
acanthodontum 24
brevifolium 24
ciliolatum 20
peckii 24
CLADOTHAMNUS
pyrolaeiflorus 24
CLAYTONIA
nevadensis 23
umbellata 23
CLEMATIS
columbiana
columbiana 22
CLINTONIA
andrewsiana 15
COCHLEARIA
officinalis
oblongifolia 22
COLLOMIA
debilis
larsenii 23
macrocalyx 20
mazama 13
CORALLORHIZA
trifida 16
CORDYLANTHUS
maritimus
palustris 15
viscidus 24
CORYDALIS
aquae-gelidae 20
caseana
cusickii 22
CORYPHANTHA
vivipara 22
CREPIS
bakeri
cusickii 24
modocensis
modocensis 22
CRYPTANTHA
humilis 22
leiocarpa 22
leucophaea 18
milobakeri 22
propria 20
rostellata 22
simulans 22
spiculifera 22
thompsonii 22
CRYPTOGRAMMA
stelleri 24
CUPRESSUS
bakeri 15
CYMOPTERUS
acaulis
greeleyorum 22
bipinnatus 16
purpurascens 17
watsonii 22
CYPERUS
rivularis 22
schweinitzii 22
CYPRIPEDIUM
calceolus
parviflorum 18
californicum 20
fasciculatum 16
montanum 23
DARLINGTONIA
californica 23
DELPHINIUM
leucophaeum 13
nuttallii 22
oreganum 22
pavonaceum 13
DENTARIA
gemmata 17
DICENTRA
formosa
oregana 20
pauciflora 15
(DICHELOSTEMMA
ida-maia) 21
DIPLOPHYLLUM
plicatum 18
DODECATHEON
"austrofrigidum" 13
dentatum 24
poeticum 24
DOUGLASIA
laevigata 24
DOWNINGIA
insignis 15
laeta 22
montana 22
yina
yina 22
DRABA
aureola 20
howellii 13
lemmonii
cyclomorpha 13
sphaeroides
cusickii 20
DRYAS
drummondii 23
octopetala
hookeriana 23
DRYOPTERIS
filix-mas 17
DUDLEYA
farinosa 17
ELMERA
racemosa
puberulenta 23
EMPETRUM
nigrum 24
EPHEDRA
nevadensis 24
viridis 24
EPILOBIUM
oreganum 13
rigidum 17
siskiyouense 15
EQUISETUM
fluviale 22
ERIGERON
cascadensis 20
cervinus 20
chrysopsidis
brevifolius 20
decumbens
decumbens 12
decumbens
robustior 18
delicatus 24
disparipilus 24
engelmannii
davisii 15
howellii 20
oreganus 20
peregrinus
peregrinus
peregrinus 17
petrophilus 17
ERIODERMA
sorediatum 18
ERIOGONUM
chrysops 14
crosbyae 13
cusickii 13
diclinum 18
hirtellum 22
incanum 15
lobbii 22
nutans 22
ochrocephalum
calcareum 17
pendulum 23
prociduum 13
salicornioides 20
scopulorum 12
ternatum 20
umbellatum
glaberrimum 22
umbellatum
hausknechtii 22

- ERIOPHORUM
 chamissonis 22
 polystachion 22
 ERITRICHIMUM
 nanum
 elongatum 23
 ERYSIMUM
 concinnum 22
 ERYTHRONIUM
 citrinum 24
 elegans 13
 howellii 17
 klamathense 24
 revolutum 23
 ESCHSCHOLZIA
 caespitosa 15
 FILIPENDULA
 occidentalis 20
 FRASERA
 albicaulis
 idahoensis 22
 umpquaensis 20
 FRITILLARIA
 adamantina 24
 camschatcensis 15
 falcata 22
 gentneri 12
 glauca 17
 recurva 24
 GALIUM
 serpenticum
 warnerense 22
 GENTIANA
 bisetata 13
 newberryi 17
 "plurisetosa" 13
 prostrata 17
 tenella 15
 GEUM
 rossii
 turbinatum 17
 triflorum
 campanulatum 15
 GILIA
 capitata
 chamissonis 22
 GRATIOLA
 heterosepala 13
 GYMNOSTERIS
 nudicaulis 24
 HABENARIA
 obtusata 15
 orbiculata 18
 HACKELIA
 cronquistii 12
 diffusa
 cottonii 22
 diffusa
 diffusa 22
 hispida 22
 ophiobia 15
 patens 22
 HAPLOPAPPUS
 arborescens 15
 racemosus
 congestus 24
 radiatus 12
 uniflorus
 linearis 23
 whitneyi
 discoideus 17
 HASTINGSIA
 bracteosa 12
 HEDYSARUM
 boreale 22
 HEMITOMES
 congestum 24
 HETERANTHERA
 dubia 22
 HETERODERMIA
 leucomelaena 18
 HEUCHERA
 grossularifolia
 grossularifolia 20
 grossularifolia
 tenuifolia 23
 HIERACIUM
 bolanderi 17
 canadense 22
 greenei 22
 horridum 22
 longiberbe 20
 parryi 22
 umbellatum 22
 HORKELIA
 daucifolia 24
 hendersonii 13
 HOWELLIA
 aquatilis 12
 HULSEA
 algida 23
 HYDROCOTYLE
 verticillata 15
 HYDROPHYLLUM
 capitatum
 thompsonii 24
 HYMENOPAPPUS
 filifolius
 filifolius 22
 HYMENOXYIS
 cooperi
 canescens 15
 ILIAMNA
 latibracteata 17
 IMPATIENS
 aurella 22
 ISOETES spp. 22
 ISOPYRUM
 hallii 24
 IVESIA
 rhypara 12
 JUNCUS
 abjectus 22
 gerardii 22
 supiniformis 22
 KALMIOPSIS
 leachiana 24
 leachiana
 var. nov. 13
 KOBRESIA
 (bellardii) 17
 myosuroides 17
 simpliciuscula 18
 LANGLOISA
 punctata 22
 LASTHENIA
 macrantha
 prisca 20
 minor
 maritima 24
 LATHYRUS
 delnorticus 17
 holochlorus 21
 LEPIDIUM
 davisii 13
 LEPTODACTYLON
 hazela 13
 LESQUERELLA
 douglasii 22
 kingii
 diversifolia 21
 LEUCOTHOE
 davisiae 24
 LEWISIA
 columbiana
 columbiana 17
 columbiana
 rupicola 17
 columbiana
 wallowensis 23
 cotyledon
 howellii 23
 cotyledon
 purdyi 13
 leana 17
 oppositifolia 17
 LILAEA
 scilloides 22
 LILIUM
 bolanderi 24
 kelloggii 22
 occidentale 12
 parvum 18
 rubescens 15
 vollmeri 24
 wigginsii 23
 LIMNANTHES
 floccosa
 bellingieriana 13
 floccosa
 grandiflora 13
 floccosa
 pumila 12
 gracilis
 gracilis 14
 LINANTHUS
 bakeri 22
 LINDERNIA
 anagallidea 22
 LISTERA
 borealis 24
 LITHOPHRAGMA
 campanulata 22
 LLOYDIA
 serotina 22
 LOBELIA
 dortmannia 19
 LOMATIUM
 bradshawii 12
 columbianum 24
 "cookii" 12
 cusickii 23
 engelmannii 15
 erythrocarpum 12
 farinosum
 hambleniae 15
 frenchii 24
 greenmanii 12
 howellii 24
 laevigatum 20
 nelsonianum 12
 oreganum 14
 "pastoralis" 20
 peckianum 23
 ravenii 19
 rollinsii 14
 salmoniflorum 19
 serpentinum 24
 suksdorfii 21
 tracyi 15
 watsonii 15
 LOPHOTOCARPUS
 californicus 22
 LOPHOZIA
 laxa 18
 LUINA
 serpentina 12
 LUPINUS
 aridus
 ashlandensis 12

- biddlei* 14
burkei
 caeruleo-
 montanus 21
cusickii 12
latifolius
 thompsonianus 24
lyallii
 minutifolius 21
lyallii
 subpendens 22
mucronulatus 24
sabinii 21
sericeus
 egglestonianus 19
sulphureus
 kincaidii 22
 tracyi 15
 uncialis 24
LUZULA
 subcongesta 22
LYCOPODIUM
 annotinum 17
 complanatum 17
 inundatum 17
 obscurum 24
 selago 17
MACHAEROCARPUS
 californicus 22
MALACOTHRIX
 glabrata 22
 torreyi 22
MECONELLA
 californica 19
 oregana 22
MELICA
 stricta 17
MENTZELIA
 mollis 12
 packardiae 12
MICROCALA
 quadrangularis 17
MICROSERIS
 acuminata 23
 bigelovii 17
 detlingii 21
 douglasii
 douglasii 19
 howellii 14
MIMULUS
 clivicola 14
 douglasii 17
 hymenophyllus 14
 jepsonii 17
 jungermanniioides 14
 kelloggii 17
 latidens 15
 patulus 14
 pulsiferae 23
 pygmaeus 14
 tricolor 17
 washingtonensis
 washingtonensis 14
MINUARTIA
 austromontana 22
MIRABILIS
 bigelovii
 retrorsa 23
 greenei 19
 macfarlanei 12
MONARDELLA
 purpurea 17
MONTIA
 diffusa 22
MUHLENBERGIA
 minutissima 17
MYOSURUS
 clavicaulis 24
 minimus
 apus
 sessiliflorus 14
 (*sessilis*) 14
NAMA
 lobbii 23
NAVARRETIA
 heterandra 15
 leucocephala 22
 tagetina 22
NEMACLADUS
 capillaris 19
 rigidus 24
NICOTIANA
 bigelovii 22
OENOTHERA
 wolfii 14
OPHIOGLOSSUM
 vulgatum 15
OROBANCHE
 pinorum 24
ORTHOCARPUS
 (*cuspidatus*
 cuspidatus) 23
 cuspidatus 23
ORYZOPSIS
 hendersonii 17
OXYPOLIS
 occidentalis 22
OXYTROPIS
 cf. sericea 22
PARNASSIA
 fimbriata
 hoodiana 24
PEDICULARIS
 bracteosa
 pachyrhiza 24
 centranthera 22
 densiflora 24
 howellii 21
PEDIOCACTUS
 simpsonii
 robustior 23
PELLAEA
 andromedaefolia 15.
 brachyptera 24
 bridgesii 17
PENSTEMON
 barrettiae 14
 davidsonii
 praeteritus 21
 deustus
 variabilis 22
 elegantulus 24
 eriantherus
 argillosus 21
 euglaucus 24
 fruticosus
 serratus 24
 glandulosus 24
 glaucinus 21
 kingii 22
 newberryi
 berryi 24
 payettensis 24
 peckii 21
 pratensis 22
 seorsus 24
 spatulatus 14
 subserratus 24
PERIDERIDIA
 erythrorhiza 12
 howellii 15
PETROPHYTUM
 caespitosum 22
PHACELIA
 argentea 14
 capitata 23
 corymbosa 23
 (*crassifolia*) 17
 gymnoclada 17
 inundata 22
 leonis 19
 lutea
 mackenzieorum 14
 malvaefolia 19
 minutissima 19
 peckii 24
 ramosissima
 eremophila 24
 verna 21
PHLOX
 colubrina 24
 hendersonii 15
 multiflora 15
 peckii 24
PILULARIA
 americana 16
PINUS
 flexilis 17
PITYOPUS
 californica 24
PLAGIOBOTHRYS
 glyptocarpus 22
 hirtus
 corallicarpus 14
 hirtus
 hirtus 12
 lamprocarpus 14
 salsus 16
PLANTAGO
 macrocarpa 19
PLEURICOSPORA
 fimbriolata 24
PLEUROPOGON
 oregonus 12
POA
 gracillima
 multnomae 24
 kelloggii 16
 laxiflora 17
 marcida 17
 pattersonii 22
 piperi 17
 suksdorfii 22
POHLIA
 sphagnicola 18
POLEMONIUM
 viscosum 23
POLYGONUM
 heterosepalum 24
POLYSTICHUM
 andersonii 24
 californicum 17
 kruckebergii 23
 lemmonii 17
POPULUS
 angustifolia 23
POTAMOGETON
 diversifolius 16
 fibrillosus 19
POTENTILLA
 glandulosa
 campanulata 24
 glandulosa
 globosa 17
 villosa
 parviflora 19
PRIMULA
 cusickiana 17
RADULA
 brunnea 18
RANUNCULUS
 andersonii 23

- austro-oreganus* 21
lobbii 24
oresterus 16
reconditus 12
verecundus 22
RHINANTHUS
crista-galli 23
RIBES
cereum
colubrinum 23
cognatum 24
irriguum 21
klamathense 22
marshallii 18
watsonianum 24
wolfii 22
ROMANZOFFIA
"thompsonii" 21
tracyi 24
RORIPPA
(calycina
columbiae) 12
columbiae 12
RUBUS
acaulis 22
bartonianus 21
SAGITTARIA
latifolia 23
SALIX
arctica 23
bebbiana 18
brachycarpa 23
cascadensis 23
delnortensis 16
drummondiana 23
fluviatilis 24
laevigata 16
orestera 22
tracyi 19
vestita 18
wolfii
idahoensis 24
SANICULA
peckiana 24
tracyi 24
tuberosa 24
SARCODES
sanguinea 24
SAXIFRAGA
adscendens
oregonensis 16
fragarioides 22
hitchcockiana 14
(occidentalis
latipetiolata) 14
oppositifolia 18
SCAPANIA
gymnostomophila 18
SCHEUCHZERIA
palustris
americana 22
(SCHOENOLIRION
bracteosum) 12
SCIAROMIUM
tricostatum 18
SCIRPUS
cyperinus 22
SCOLIOPUS
hallii 24
SCRIBNERIA
bolanderi 18
SEDUM
debile 23
laxum
heckneri 21
laxum
laxum 24
moranii 14
oblanceolatum 23
obtusatum
retusum 22
radiatum
ciliolum 22
radiatum
depauperatum 24
spathulifolium
purdyi 18
SELAGINELLA
watsonii 23
SENECIO
ertterae 12
flettii 18
hesperius 14
porteri 19
SESUVIUM
verrucosum 18
SIDALCEA
campestris 21
cusickii 21
hendersonii 16
hirtipes 21
malachroides 16
malvaeflora
elegans 22
malvaeflora
nana 24
malvaeflora
patula 16
nelsoniana 12
setosa
querceta 12
setosa
setosa 21
SILENE
douglasii
monantha 24
douglasii
oraria 12
grayi 22
hookeri
bolanderi 16
hookeri
pulverulenta 24
nuda
insectivora 18
scaposa
lobata 24
scaposa
scaposa 14
spaldingii 14
suksdorfii 23
SISYRINCHIUM
hitchcockii 22
SMELOWSKIA
calycina 18
ovalis
ovalis 23
SMILAX
californica 18
SOPHORA
leachiana 21
SPIRANTHES
porrifolia 22
SPLACHNUM
ampullaceum 18
STELLARIA
humifusa 22
STEPHANOMERIA
malheurensis 13
STIPA
(hendersonii) 15
speciosa 18
STREPTANTHUS
howellii 14
STREPTOPUS
streptopoides 18
STYLOCLINE
psilocarphoides 16
SUKSDORFIA
ranunculifolia 24
violacea 16
SULLIVANTIA
oregana 18
SYMPHORICARPOS
longiflorus 18
SYNTHYRIS
missurica
hirsuta 14
(missurica
stellata) 23
schizantha 23
stellata 23
TALINUM
spinescens 18
TAUSCHIA
glauca 24
howellii 14
stricklandii 16
TELOSCHISTES
flavicans 18
THALICTRUM
alpinum
hebetum 16
THELYPODIUM
brachycarpum 18
eucosmum 13
howellii
spectabilis 13
THLASPI
montanum
siskiyouense 21
TIARELLA
laciniata 24
TOWNSENDIA
montana 22
parryi 22
scapigera 24
TRIFOLIUM
howellii 24
leibergii 14
owyheense 14
TRILLIUM
kurabayashii 23
(TRITELEIA
laxa) 15
hendersonii
leachiae) 16
TROLLIUS
laxus
albiflorus 16
UMBILICARIA
phaea
coccinea 18
UTRICULARIA
intermedia 22
minor 22
VACCINIUM
oxycoccus
intermedium 23
VANCOUVERIA
chrysantha 23
planipetala 24
VIOLA
canadensis
rugulosa 24
douglasii 24
lanceolata
occidentalis 18
(occidentalis) 18
ocellata 24
ZAUSCHNERIA
latifolia 24

ACKNOWLEDGEMENTS

ANIMALS:

We are indebted to the many individuals who have volunteered their time and knowledge. Without their help this report would not be possible and it is due only to their dedicated work that status determinations can be made. While we can't list them all, we would like to mention several who have been especially helpful:

Vertebrates: Dr. Carl Bond, Dr. Chris Maser, Dr. Robert Storm, Dr. Jack Williams, David Marshall, Al St. John, Mark Smith, Bill Haight, Bill Neitro, Mark Perkins, Bob Phillips, Mike Graybill, Jan Hodder, Otis Swisher, Dan Varoujean, Geoff Pampush, Dr. Steve Cross, and Dr. Richard Forbes.

Invertebrates: Dr. Robert Pyle, Dr. Jack Lattin, Dr. Ellen Benedict, Paul Hammond, and Paul Johnson.

PLANTS:

Many of the changes made since the last edition of this book in 1983 resulted from comments received at the Rare and Endangered Plant Conference held in Eugene in November, 1984. We are extremely grateful to all who participated for their time, energy, and care.

Special thanks go to Dr. Kenton Chambers of Oregon State University and Dr. David Wagner of the University of Oregon for their assistance with taxonomic questions. Julie Kierstead was very helpful in proofing the lists as well as providing drawings and valuable information on several species.

The mosses were selected in consultation with Mr. John Christy of British Columbia, and the lichens with the aid of Larry Pike of Marcola. The liverwort list was prepared by Dr. Wagner.

Compiled by The Oregon Natural Heritage Data Base:

Curt Soper, Data Base Coordinator/Zoologist
Jimmy Kagan, Plant Ecologist/Botanist
Sue Yamamoto, Data Manager/Botanist
Connie Levesque, Data Manager/Zoologist
John Gamon, Botanist

Layout by Chris Rauschenberg
Printed by Portland General Electric