

Tenebrionidae

from South Mountain Park, Maricopa County, Arizona

<i>Argoporis bicolor</i> (LeConte)	35
<i>Asidina paralella</i> (LeConte)	1,513
<i>Asidina wickhami</i> (Horn)	58
<i>Conibius opacus</i> (LeConte)	7
<i>Cryptoglossa muricata</i> (LeConte)	1,469
<i>Cryptoglossa variolosa</i> (Horn)	492
<i>Asbolus verrucosus</i> LeConte	208
<i>Eleodes armatus</i> LeConte	179
<i>Eleodes tribulus</i> Thomas	4
<i>Eusattus dubius arizonensis</i> Doyen	5
<i>Nocibiotes rubripes</i> Casey	40
<i>Metoponium</i> sp.	1
<i>Philolitus adversus</i> (Casey)	11
<i>Steriphanus</i> sp.	79
<i>Tribolium castaneum</i> (Herbst)	1
<i>Trichiasida acerba</i> (Horn)	3
<i>Trichiasida hispidula</i> (LeConte)	5
<i>Triorophus politus</i> Casey	31



(L) *Asidina wickhami* (Horn)

***Asidina parallela* (LeConte) (R)**

South Mountain Park, Arizona

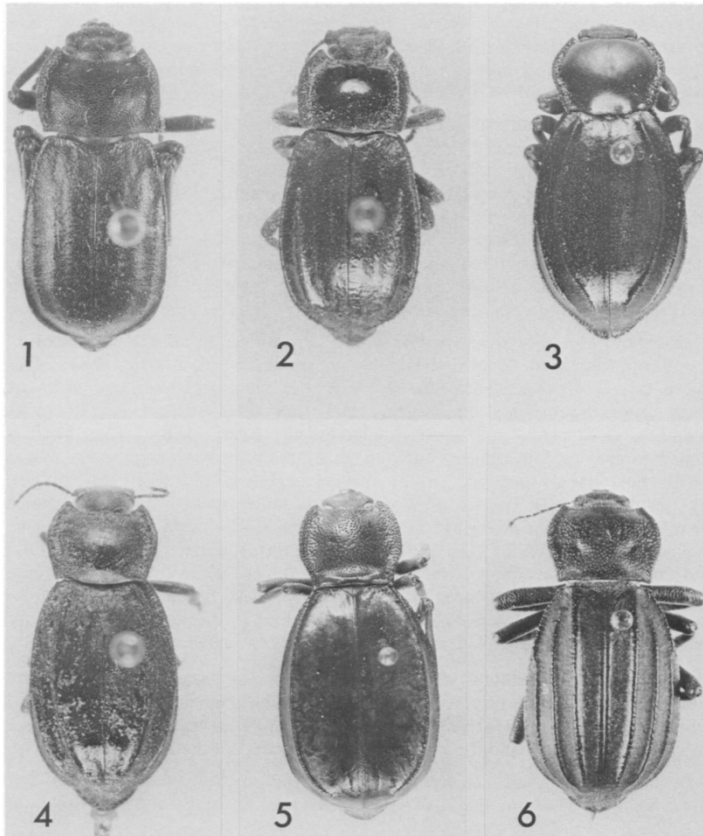


Fig. 1-6. *United States Species of Asidina*: 1. *A. rugicollis* ♂ Paratype, S. Rim, Grand Canyon, Arizona, 19-VII-68, C.A., W.E., & B. W. Triplehorn. Actual Length: 13.6 mm. 2. *A. parallela* ♀, Maricopa Co., Ariz., S. Mt. Pk. 10-X-65, S. C. Williams. Actual length: 14.6mm. 3. *A. furcata* ♀, Big Bend Nat. Pk., Texas, Santa Elena Canyon, 3-IX-68, J. A. Brubaker and F. J. Moore. Actual length: 19.5mm. 4. *A. wickhami* ♀, Maricopa Co., Ariz., S. Mt. Pk., 12-IX-65, S. C. Williams. Actual length: 15.3 mm. 5. *A. confluens* ♀, Borego, San Diego Co., Calif., 4-8-50, W. F. Barr. Actual length: 26.4 mm. 6. *A. semilaevis* ♂, Scottsdale, Ariz., 30-IX-66, P. Pinter. Actual length: 23.1 mm.

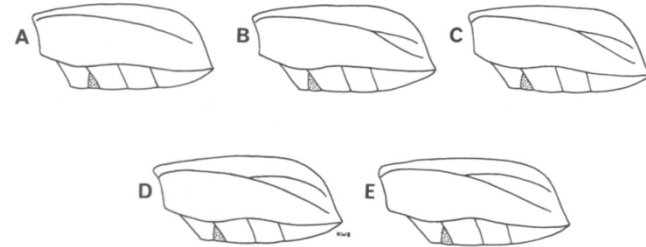


Fig. 8: *Asidina wickhami* (Horn), lateral view of elytra showing variation in bifurcation of marginal carina. ARIZONA: A. Valentine; B. Hualapai Mts. near Kingman; C. Tempe (Type of *A. liberta*); D. Riverside, Pinal Mts. (Type of *A. wickhami*); E. Pinal Mts.

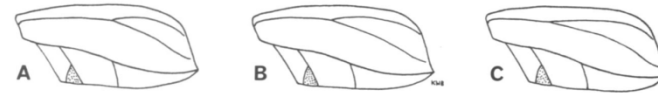


Fig. 9: *Asidina furcata* (Champion), lateral view of elytra showing variation in bifurcation of marginal carina. A. Saltillo, Mexico and Big Bend, Texas; B. Big Bend, Texas; C. Villa Lerdo, Durango, Mexico (Type).

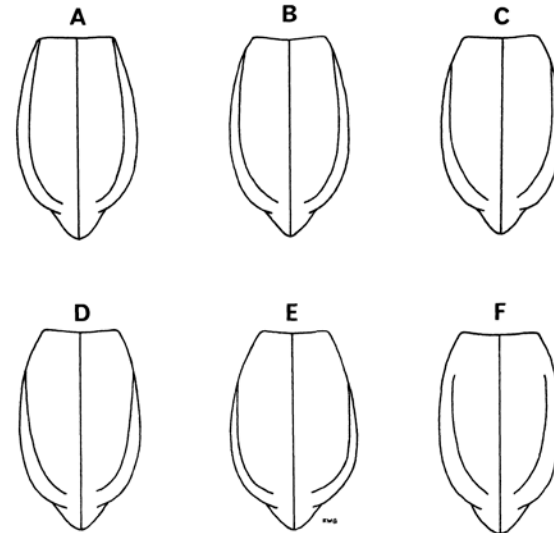


Fig. 10: *Asidina confluens* (LeConte), dorsal view of elytra showing variation in junction of discal carina with marginal carina. A. Twenty-nine Palms, California; B. Blythe, California; C. Borrego Springs, California (similar to type); D. Patagonia, Arizona; E. Puerto Peñasco, Sonora, Mexico; F. Desemboque, Sonora, Mexico.



(L) *Cryptoglossa muricata* (LeConte)

***Cryptoglossa variolosa* (Horn) (R)**

South Mountain Park, Arizona



***Eleodes armatus* LeConte**

South Mountain Park, Arizona



(L) *Asbolus verrucosus* LeConte

***Philolithus adversus* (Casey) (R)**

South Mountain Park, Arizona



(L) *Steriphanus* sp.

***Nocibiotes rubripes* Casey (R)**

South Mountain Park, Arizona



(L) *Argoporis bicolor* (LeConte)

***Triorophus politus* Casey (R)**

South Mountain Park, Arizona