



High-quality color printing performance with next-generation HP MFPs

HP Color LaserJet Enterprise MFP M776 series



"HP product lines stand out above the rest"¹



Exceptional color performance



Minimal interruptions. Maximum productivity.



The world's most secure printing²

Exceptional color performance



Designed for superb color output, the HP Color LaserJet Enterprise MFP M776 series printers use JetIntelligence toner for high-quality output. Print exceptional quality, premium marketing materials and professional quality documents with consistently brilliant color.



Brilliant, durable color prints

Look professional on every page with vibrant, high-quality color prints that stand the test of time. Produce full-bleed A3 marketing materials by printing on SRA3 paper and trimming down to size.

Print premium, professional-quality documents with vivid color images and graphics that stand out. Enhanced print mode is a special print mode that allows for a wider range of colors and an extra level of vividness and gloss for important documents, brochures, and marketing materials.



Consistent quality toner

Create consistent quality and the performance you count on with Original HP Toner cartridges and drums with JetIntelligence, specially designed and precisely engineered for HP printers and MFPs.

Count on consistently vibrant, professional-quality results. Specially formulated HP ColorSphere 3 toner is precisely tuned to match the powerful performance of your HP printer. Get the most from your cartridge with page maximizer technology that manages efficient toner use and cartridge performance.



Ready to work, right away

Speed through print jobs right out of the box. This device ships with preinstalled Original HP Color LaserJet Toner cartridges and drums with JetIntelligence. Auto seal removal enables simple and seamless installation of cartridge replacements, so you can get back to business fast—without costly delays or frustrating messes.

Minimal interruptions. Maximum uptime.

Help run your business efficiently and maximize uptime. With HP LaserJet enterprise printers and MFPs, there are minimal interruptions to workflow. Continue at peak performance with a streamlined printer designed to be energy efficient and to keep up with the pace of business.

Move business forward

Enjoy smoother workflows with industry-leading printing capabilities, as fast as 45/46 pages per minute (ppm) (letter/A4).³ With more productivity and fewer interruptions, your teams can concentrate on their work.

Print, scan, copy, and fax⁴ with ease from one device. Use the easy-access USB port to walk up and print from a memory device.⁵



Keep the pace of business moving with easy-to-replace, long-life supplies. Change the toner and drum in seconds—both are easily accessible and come pre-installed in the printer. And this HP Color LaserJet MFP is designed with minimal parts for simple service and maximum productivity.

Stay connected

Easily print and share resources with built-in Ethernet (all models) and dual-band Wi-Fi® and Wi-Fi Direct with Bluetooth® Low Energy (standard on the M776z/zs models).⁶ All M776 series MFPs can add the optional NFC touch-to-print.⁷



The world is your office. Submit while on the go and release at any of your HP Roam-enabled office printers—simply and securely with HP Roam for Business.⁸ Your mobile device will automatically discover nearby HP Roam-enabled printers.

Expand your capacity

Tailor this printer to the needs of your business with its modular design and wide range of optional paper-handling accessories. A built-in stapler/stacker on the M776zs model helps increase productivity.⁹ Most optional trays support media sizes up to 11 x 17 inches (A3).

Print up to 3,900 pages (M776dn model only) without reloading paper, using the optional 2,700-sheet high-capacity input (HCI) tray and one optional 550-sheet paper trays.¹⁰ Or choose the optional stand to store paper and supplies.

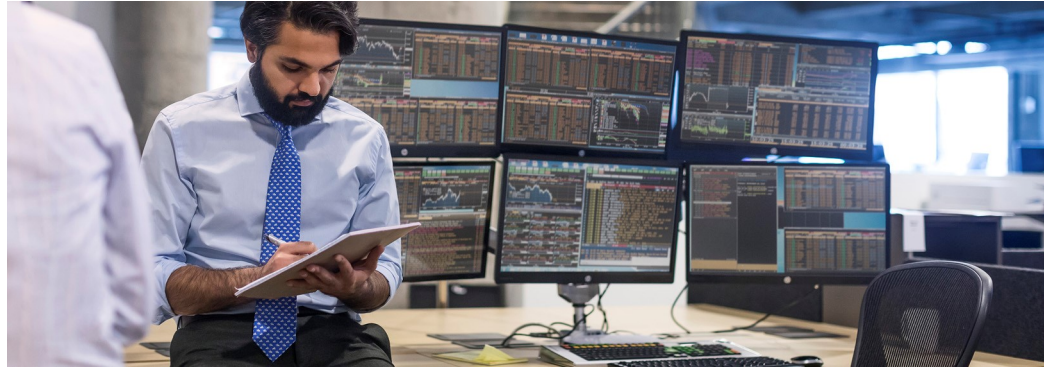


Benefit from reduced energy consumption and increased sustainability, up to 79% over predecessors.¹¹

Save paper and conserve resources with automatic two-sided printing. Consume up to 50% less paper by printing on both sides of the page. The duplex print setting is set at default paper savings mode to help save paper right out of the box.¹²

Easily recycle your Original HP cartridges at no additional charge through HP Planet Partners.¹³

The world's most secure printing²



HP printers have the industry's strongest security² because they're always on guard, continually detecting and stopping threats while adapting to new ones. And only HP printers automatically self-heal from attacks, so IT doesn't need to intervene.



Always on guard

Only HP Enterprise devices offer built-in security features that are always on guard.²

- With HP Sure Start, each device regularly checks its operating code and repairs itself from attempted hacks.
- Whitelisting checks firmware during startup to help ensure it's authentic, good code—digitally signed by HP.
- Run-time intrusion detection continually monitors activity to detect and stop attacks, then automatically reboots.
- HP Connection Inspector inspects outgoing network connections to stop suspicious requests like malware.

Thwart potential attacks by receiving instant notification of security issues, so immediate action can be taken. This device works with tools like Splunk, ArcSight, McAfee, and SIEMonster.



Take security to the next level

Help protect your MFP with more than 250 embedded security features.¹⁴ Protect information in transit over the network and stored on the device—keys, passwords, certificates, and more. Store data on the 256-bit encrypted HP High-Performance Secure Hard Disk.

Easily deploy and integrate HP and third-party solutions with the HP Open Extensibility Platform (OXP). Enter a PIN or password at the device to retrieve your print job and add features such as optional proximity card readers and more through the Hardware Integration Pocket (HIP).¹⁵

Further safeguard data stored on the device, using the standard HP Trusted Platform Module.



Build business efficiency

Centralize control of your printing environment with HP Web Jetadmin—and help build business efficiency.¹⁶ Optional HP JetAdvantage Security Manager offers an effective, policy-based approach to help secure HP printing and imaging devices.¹⁷ Easily set security configuration policies and automatically validate settings for every HP printer and MFP in your fleet.

HP JetAdvantage Secure Print¹⁸ and HP Access Control (HPAC) help secure documents by requiring authentication to release print jobs. In addition, extend capabilities and easily customize with HPAC—integrate job accounting, manage rights, and establish quotas for things such as color use.¹⁹ Save IT time and make printing easy for the entire enterprise by using a single driver for all HP devices.²⁰

▶ For more information:

Fleet management

HP Web Jetadmin visit: hp.com/go/wia

Solution brief: <http://h20195.www2.hp.com/V2/GetPDF.aspx/4AA5-2718ENW.pdf>

Video: <http://hp.brightcovegallery.com/solutions/detail/video/4271055504001/>

HP Universal Print Driver visit: hp.com/go/upd

Solution brief: <http://h20195.www2.hp.com/V2/GetPDF.aspx/4AA2-4781ENW>

Security

HP JetAdvantage Security Solutions visit: hp.com/go/printsecurity

Solution brief: <http://h20195.www2.hp.com/V2/GetPDF.aspx/4AA3-1295ENW.pdf>

Video: <http://hp.brightcovegallery.com/products/detail/video/4270905124001/>

HP JetAdvantage Security Manager visit: hp.com/go/securitymanager

Brochure: <http://h20195.www2.hp.com/V2/GetPDF.aspx/4AA3-9275ENW.pdf>

Video: <http://hp.brightcovegallery.com/products/detail/video/4270837770001/>

Simplify and speed up workflows



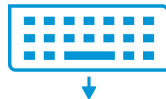
Accelerate workflow, improve accuracy, and easily connect people throughout your organization. Complete high-volume scan jobs super-fast and use a pull-out keyboard for quick and easy data entry.²¹



Capture every page with ease

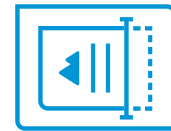
Load up to 200 pages in the automatic document feeder (ADF) for fast, unattended duplex scanning at up to 240 images per minute (ipm).²²

Capture text from documents with high accuracy. Easily scan documents, edit text, and save as a Microsoft® Word or searchable PDF file with HP Scan and I.R.I.S. Readiris™ Pro OCR Software.



Pull-out keyboard for fast, accurate input

Help make data entry quicker and more accurate with a pull-out keyboard at the MFP. Typing information for jobs right at the device is familiar and fast.

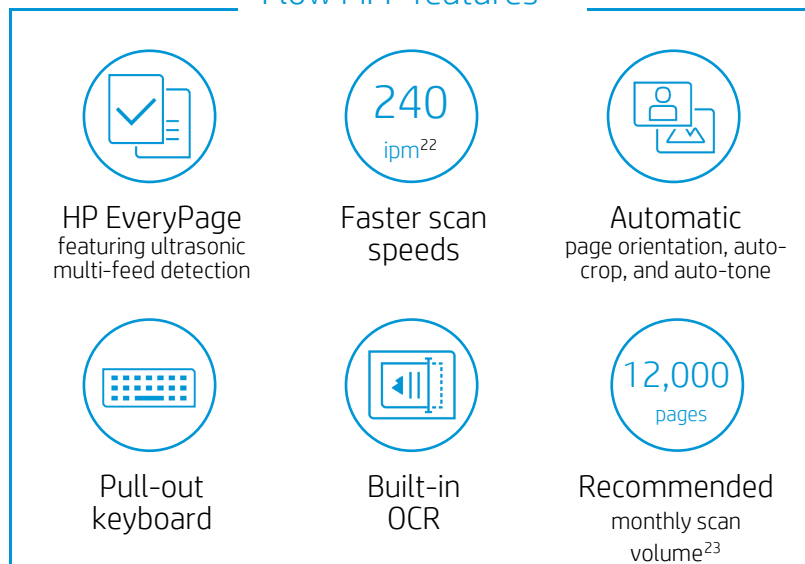


Easily scan and edit text

Capture every page easily—with confidence. HP EveryPage gives employees smooth paper handling capabilities to detect potential errors or missed pages on the spot—for scan jobs of all kinds.²¹

Help ensure every scanned document is properly oriented, cropped to size, and grayscale-optimized.

Flow MFP features²¹



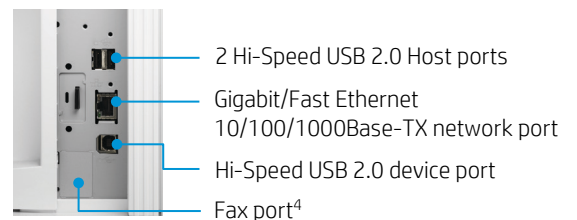
Get to know the HP Color LaserJet Enterprise MFP M776 series

HP Color LaserJet Enterprise Flow MFP M776zs shown



Front view

Rear I/O panel closeup



Series at a glance



Model (product number)	MFP M776dn (T3U55A)	Flow MFP M776z (3WT91A)	Flow MFP M776zs (T3U56A)
Functions	Print, copy, scan; optional fax	Print, copy, scan, fax	Print, copy, scan, fax
Print speed (letter/A4, black and color) ³	Up to 45/46 ppm (<i>all models</i>)		
Scan speed (letter and A4, black and color) ²²	Simplex: Up to 90 ppm Duplex: Up to 180 ipm	Simplex: Up to 120 ppm Duplex: Up to 240 ipm	Simplex: Up to 120 ppm Duplex: Up to 240 ipm
Automatic two-sided printing (default ¹²)	✓	✓	✓
100-sheet multipurpose tray 1 and 550-sheet tray 2	✓	✓	✓
1x550-sheet paper tray	Optional (add up to one) ¹⁰	✓	Not applicable
2x550-sheet paper tray and stand	Optional (add up to one stand only)	✓	✓
2,700-sheet HCI paper tray and stand	Optional (add up to one stand only)	Not applicable	Not applicable
HP LaserJet Stand	Optional (add up to one stand only)	Not applicable	Not applicable
Stapler/Stacker inner finisher	Not applicable	Not applicable	✓
Convenience stapler	Not applicable	Not applicable	✓
Input capacity (standard/maximum ¹⁰)	Up to 650/3,900 sheets	Up to 2,300/2,300 sheets	Up to 1,750/1,750 sheets
Advanced workflow features like pull-out keyboard, HP EveryPage, and OCR	Not applicable	✓	✓
Recommended monthly scan volume ²³	Up to 10,000 pages	Up to 12,000 pages	Up to 12,000 pages
Recommended monthly page volume ²⁴	Up to 40,000 pages (<i>all models</i>)		
Cartridge yield ²⁵ (A/X)	Black: ~16,000/34,000 pages; Color: ~13,000/29,000 pages (<i>all models</i>)		
HP High-Performance Secure Hard Disk	✓	✓	✓
Dual-band Wi-Fi and Wi-Fi Direct with Bluetooth Low Energy ⁶	Optional	✓	✓
NFC touch-to-print ⁷	Optional (<i>all models</i>)		

HP Color LaserJet Enterprise MFP M776 series – Configuration



Standard on MFP M776dn

- 100-sheet multipurpose tray 1
 - Media size: Up to 12 x 18 in and SRA3
 - Media weight: 16 to 80 lb bond
- 550-sheet tray 2
 - Media size: Up to 11.7 x 17 in
 - Media weight: 16 to 68 lb bond

1x550-sheet tray (T3V27A)

- Add up to one
- Media size: Up to 12 x 18 in and SRA3
- Media weight: 16 to 68 lb bond

Add up to one of the following stand accessories:

HP LaserJet Stand (T3V28A)

- Storage for paper and supplies

2x550-sheet tray and stand (T3V29A)

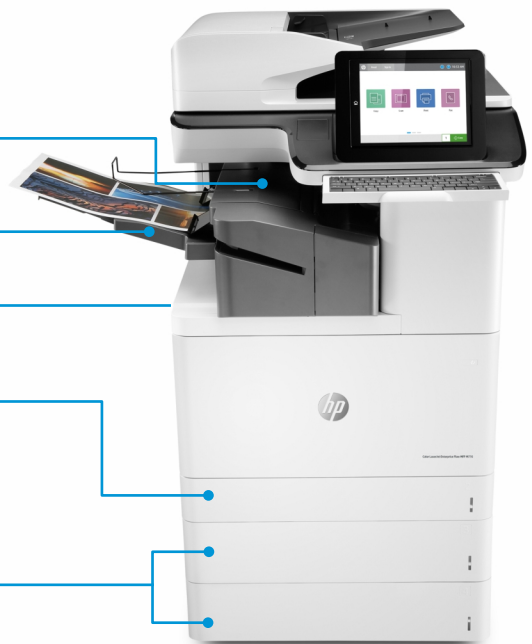
- Tray 1: Up to 550 sheets
- Tray 2: Up to 550 sheets
- Media size: Up to 12 x 18 in and SRA3
- Media weight: 16 to 68 lb bond

High-capacity input tray and stand (T3V30A)

- Up to 2,700 sheets
- Media size: Letter
- Media weight: 16 to 68 lb bond

Standard on Flow MFP M776z model:

Standard on Flow MFP M776zs model:



- Stapler/stacker finisher**
- Up to 200-sheet additional output
 - Convenience stapler⁹

500-sheet output bin

- 100-sheet multipurpose tray 1
- Media size: Up to 12 x 18 in and SRA3
 - Media weight: 16 to 80 lb bond

- 550-sheet tray 2
- Media size: Up to 11.7 x 17 in
 - Media weight: 16 to 68 lb bond

- 550-sheet tray 3
- Media size: Up to 11.7 x 17 in
 - Media weight: 16 to 68 lb bond

- 2x550-sheet tray and stand
- Media size: Up to 12 x 18 in and SRA3
 - Media weight: 16 to 68 lb bond

Paper-handling accessories

The HP Color LaserJet Enterprise MFP M776dn model comes standard with a 100-sheet multipurpose tray and one 550-sheet tray. The M776dn model can add up to one additional 550-sheet paper tray, as well as one stand: 2x550-sheet paper tray and stand, or 2,700-sheet HCI paper tray and stand, or HP LaserJet stand. The addition of one 550-sheet input tray and the 2,700-sheet HCI paper tray and stand is required to reach the maximum input capacity of 3,900 sheets.

The HP Color LaserJet Enterprise Flow MFP M776z model comes standard with a 100-sheet multipurpose tray, two 550-sheet trays, and the 2x550-sheet paper tray and stand. No other input trays may be added, and it offers a standard/maximum input capacity of 2,300 sheets.

The HP Color LaserJet Enterprise Flow MFP M776zs model comes standard with a 100-sheet multipurpose tray, one 550-sheet tray, and the 2x550-sheet paper tray and stand. The M776zs model also comes standard with a Stapler/stacker inner finisher accessory and convenience stapler. No other input trays may be added, and it offers a standard/maximum input capacity of 1,750 sheets.

Other optional accessories are included in the Ordering information on page 14.

HP Color LaserJet Enterprise MFP M776 series



HP LaserJet 550-sheet Paper Tray (T3V27A)

HP LaserJet Stand (T3V28A)

HP LaserJet 2x550sheet Paper Tray and Stand (T3V29A)

HP LaserJet 2,700-sheet HCI Tray and Stand (T3V30A)

Stapler/Stacker inner finisher

Standard	M776z	M776z, M776zs	M776zs
Optional	M776dn (up to one)	M776dn (choose up to one stand only)	Not available

Technical specifications

	HP Color LaserJet Enterprise MFP M776dn	HP Color LaserJet Enterprise Flow MFP M776z	HP Color LaserJet Enterprise Flow MFP M776zs
Product number	T3U55A	3WT91A	T3U56A
Functions	Print, scan, copy, optional fax	Print, scan, copy, fax	Print, scan, copy, fax
Control panel/data entry	9.0-inch (22.8 cm) functional touchscreen with 8.0-inch (20.3 cm) Color Graphics Display; easy-access USB ⁵		
Print speed (letter/A4, black and color)³	Up to 45/46 ppm (<i>all models</i>)		
First page out (letter and A4)	From ready: ²⁶ As fast as 6.5/6.8 seconds, black/color From sleep: ²⁷ As fast as 11.6/11.8 seconds, black/color	From ready: ²⁶ As fast as 6.5/6.8 seconds, black/color From sleep: ²⁷ As fast as 11.6/11.8 seconds, black/color	From ready: ²⁶ As fast as 6.7/7.1 seconds, black/color From sleep: ²⁷ As fast as 12.0/12.4 seconds, black/color
ADF scan speed²² (simplex/duplex)	Up to 90/180 ipm (letter and A4)	Up to 120/240 ipm (letter and A4) (<i>z and zs models</i>)	
Print resolution	Default: Up to 600 x 600 dpi (<i>all models</i>) Best: Up to 1200 x 1200 dpi (<i>all models</i>)		
Features			
Printing	Print preview, duplex printing, print multiple pages per sheet (2, 4, 6, 9, 16), collation, watermarks, store print jobs, HP EasyColor		
Scanning	Flatbed scanner, up to 8.5 x 14 in (216 x 356 mm); 200-sheet ADF with two-sided, single-pass scanning; Advanced features: Optimize text/picture, image adjustments, job build, output quality setting, selectable scan resolution 75 to 600 dpi, auto detect color, edge erase, job notification, blank page suppression, Quick Sets		
	Plus: HP EveryPage with ultrasonic multi-feed detection, Embedded Optical Character Recognition (OCR), auto-orientation, auto-crop-to-page, auto-tone		
Digital sending	Scan to email, save-to-network folder, save-to-USB drive, send to Microsoft SharePoint®, send to FTP, send to LAN fax (except M681 dh model), send to Internet fax, local address book, SMTP over SSL, blank page removal, edge erase, auto color sense, auto crop to content, compact PDF		
	Plus: HP EveryPage with ultrasonic multi-feed detection, Embedded Optical Character Recognition (OCR), auto-orientation, auto-crop-to-page, auto-tone		
File formats ²⁸	PDF, JPEG, TIFF, MTIFF, XPS, PDF/A; Scan to easy-access USB: PDF, JPEG, TIFF, MTIFF, XPS, PDF/A; Print from easy-access USB: PDF, PS, Print Ready files (.prn, .pcl, .cht)		
	Plus: TEXT (OCR), Unicode TEXT (OCR), RTF (OCR), Searchable PDF (OCR), Searchable PDF/A (OCR), HTML (OCR), CSV (OCR); Scan to easy access USB: TEXT (OCR), Unicode TEXT (OCR), RTF (OCR), Searchable PDF (OCR), Searchable PDF/A (OCR), HTML (OCR), CSV (OCR)		
Copying	Auto scale, Reduce/Enlarge from scanner glass (25 to 400%), Collate, Auto-color detection, Two-sided copying, Job build, image adjustments (darkness, background clean-up, sharpness); Copy resolution: Up to 600 x 600 dpi		
Faxing	Optional	Fax speed: ²⁹ 6 seconds per page/33.6 kbps (letter and A4); fax forwarding, receive fax polling, broadcasting to up to 210 locations, speed dial up to 1000 numbers, each with 210 destinations, auto-fax reduction, auto-redialing, stored faxes, fax archiving, scale-to-fit, fax address book, LAN/Internet fax, fax number confirmation, holiday fax schedule Fax resolution: Standard 203 x 98 dpi, superfine 300 x 300 dpi, 256 levels of gray	
Two-sided printing	Automatic (default ¹²) (<i>all models</i>)		
Processor	1.2 GHz (<i>all models</i>)		
Memory (standard/maximum³⁰)	3.0 GB/5.0 GB	5.0 GB/7.0 GB	5.0 GB/7.0 GB
Storage	Standard: 500 GB HP High-Performance Secure Hard Disk (<i>all models</i>)		
Durability ratings			
RMPV ²⁴	Up to 40,000 pages (<i>all models</i>)		
RMSV ²³	Up to 10,000 pages	Up to 12,000 pages	Up to 12,000 pages
Duty cycle ³¹	Up to 200,000 pages (<i>all models</i>)		

	HP Color LaserJet Enterprise MFP M776dn	HP Color LaserJet Enterprise Flow MFP M776z	HP Color LaserJet Enterprise Flow MFP M776zs
Media specifications			
Input capacity	Up to 650/3,900 sheets (standard/maximum) ¹⁰ 100-sheet multipurpose tray 1: Up to 100 sheets 550-sheet input tray 2: Up to 550 sheets	Up to 2,300 sheets (standard and maximum) ¹⁰ 100-sheet multipurpose tray 1: Up to 100 sheets 550-sheet input tray 2: Up to 550 sheets 550-sheet input tray 3: Up to 550 sheets 2x550-sheet paper tray and stand: Up to 1,100 sheets	Up to 1,750 sheets (standard and maximum) ¹⁰ 100-sheet multipurpose tray 1: Up to 100 sheets 550-sheet input tray 2: Up to 550 sheets 2x550-sheet paper tray and stand: Up to 1,100 sheets
Output capacity	Up to 500 sheets	Up to 500 sheets	Up to 700 sheets with Stapler/Stacker
Media sizes	<p>100-sheet multipurpose Tray 1: Statement, 3 x 5 index card, 4 x 6 index card, 5 x 7 index card, 5 x 8 index card, letter, letter-R, legal, executive, 11 x 17 in, 8.5 x 13 in, 12 x 18 in, Envelopes (#9, #10, Monarch); A3, A4, A4-R, A5, A6, RA3, SRA3, RA4, SRA4, B4 (JIS), B5 (JIS), B6 (JIS), Oficio (216 x 340 mm), 8K (270 x 390 mm), 8K (260 x 368 mm), 8K (273 x 394 mm), 16K (195 x 270 mm), 16K (184 x 260 mm), 16K (197 x 273 mm), Postcard (JIS), Dpostcard (JIS), Envelopes (B5, C5, C6, DL); Custom media sizes: 2.5 x 5 to 12.6 x 18 in (64 x 127 to 320 x 457 mm)</p> <p>550-sheet input Tray 2: Letter, letter-R, legal, executive, 8.5 x 13 in, 11 x 17 in; A3, A4, A4-R, A5, RA4, SRA4, B4 (JIS), B5 (JIS), Oficio (216 x 340 mm), 8K (270 x 390 mm), 8K (260 x 368 mm), 8K (273 x 394 mm), 16K (195 x 270 mm), 16K (184 x 260 mm), 16K (197 x 273 mm), Dpostcard (JIS); Custom media sizes: 5.8 x 5.8 to 11.7 x 17 in (148 x 148 to 297 x 432 mm)</p> <p>ADF: Letter, legal, executive, US check; A3, A4, A5, A6, long paper up to 34 in (864 mm)</p> <p>Duplex: Letter, executive, 8.5 x 13 in, 11 x 17 in; A3, A4, A4-R, A5, RA3, SRA3, RA4, SRA4, B4 (JIS), B5 (JIS), Oficio (216 x 340 mm), 8K, 16K (195 x 270), 16K (184 x 260), 16K (197 x 273)</p>		
	Plus: Optional 1x550-sheet and 2x550-sheet tray and stand: Letter, letter-R, legal, executive, 8.5 x 13 in, 11 x 17 in, 12 x 18 in; A3, A4, A4-R, A5, RA3, SRA3, RA4, SRA4, B4 (JIS), B5 (JIS), Oficio (216 x 340 mm), 8K (270 x 390 mm), 8K (260 x 368 mm), 8K (273 x 394 mm), 16K (195 x 270 mm), 16K (184 x 260 mm), 16K (197 x 273 mm), Dpostcard (JIS); Custom media sizes: 5.8 x 5.8 to 12.6 x 18 in (148 x 148 to 320 x 457 mm) Optional 2,700-sheet HCl paper tray and stand: Letter; A4; Custom media sizes: 11 x 8.27 to 11.7 x 8.5 in (279 x 210 to 297 x 216 mm)	Plus: 1x550-sheet and 2x550-sheet tray and stand: Letter, letter-R, legal, executive, 8.5 x 13 in, 11 x 17 in, 12 x 18 in; A3, A4, A4-R, A5, RA3, SRA3, RA4, SRA4, B4 (JIS), B5 (JIS), Oficio (216 x 340 mm), 8K (270 x 390 mm), 8K (260 x 368 mm), 8K (273 x 394 mm), 16K (195 x 270 mm), 16K (184 x 260 mm), 16K (197 x 273 mm), Dpostcard (JIS); Custom media sizes: 5.8 x 5.8 to 12.6 x 18 in (148 x 148 to 320 x 457 mm)	Plus: 2x550-sheet tray and stand: Letter, letter-R, legal, executive, 8.5 x 13 in, 11 x 17 in, 12 x 18 in; A3, A4, A4-R, A5, RA3, SRA3, RA4, SRA4, B4 (JIS), B5 (JIS), Oficio (216 x 340 mm), 8K (270 x 390 mm), 8K (260 x 368 mm), 8K (273 x 394 mm), 16K (195 x 270 mm), 16K (184 x 260 mm), 16K (197 x 273 mm), Dpostcard (JIS); Custom media sizes: 5.8 x 5.8 to 12.6 x 18 in (148 x 148 to 320 x 457 mm)
Media weights	<p>100-sheet multipurpose Tray 1: 16 to 80 lb; 60 to 300 g/m² (plain papers), up to 220 g/m² (glossy/coated)</p> <p>550-sheet input Tray 2: 16 to 68 lb; 60 to 256 g/m² (plain papers), up to 220 g/m² (glossy/coated)</p> <p>ADF: 12 to 53 lb; 45 to 200 g/m²</p> <p>Duplex: 16 to 58 lb; 60 to 216 g/m²</p>		
	Plus: Optional 1x550-sheet and 2x550-sheet tray and stand: 16 to 68 lb; 60 to 256 g/m ² Optional 2,700-sheet HCl paper tray and stand: 16 to 68 lb; 60 to 256 g/m ²	1x550-sheet and 2x550-sheet tray and stand: 16 to 68 lb; 60 to 256 g/m ²	2x550-sheet tray and stand: 16 to 68 lb; 60 to 256 g/m ²
Media types	Paper (plain, heavy, extra heavy, glossy, light, recycle, tough), envelopes, labels, glossy film, cardstock, transparencies		
Print languages	HP PCL 6, HP PCL 5 (HP PCL 5 driver available from the Web only), HP postscript level 3 emulation, native PDF printing (v 1.7), Apple® AirPrint®, ³² Google Cloud Print™		
Fonts and typefaces	105 internal TrueType fonts scalable in HP PCL, Barcode font variants (Code 39, I2of5, UPC/ENA, Code 128, OCR-A/OCR-B), 92 internal scalable fonts in HP Postscript level 3 emulation (Euro symbol built-in); 1 internal Unicode fonts (Andale Mono WorldType); 2 Internal Windows Vista® 8 fonts (Calibri, Cambria); additional font solutions available via third-party flash memory cards; HP LaserJet fonts and IPDS Emulation available at hp.com/go/laserjetfonts		
Connectivity	2 Hi-Speed USB 2.0 Host, Hi-Speed USB 2.0 device, Gigabit Ethernet 10/100/1000Base-TX network, 2 nd -generation Hardware Integration Pocket (HIP2) ¹⁵		
	Plus: Wireless 802.11n/BLE (<i>z and zs models</i>)		
Mobile printing capability	Standard: Apple AirPrint, ³² HP ePrint, ³³ Mopria-certified, HP Roam-capable for easy printing, ⁸ Google Cloud Print		

	HP Color LaserJet Enterprise MFP M776dn	HP Color LaserJet Enterprise Flow MFP M776z	HP Color LaserJet Enterprise Flow MFP M776zs
Network capabilities	Standard: via HP Jetdirect Ethernet embedded print server, 802.3az (EEE) support on Fast Ethernet and Gig Links, IPsec	Standard: via HP Jetdirect Ethernet embedded print server, 802.3az (EEE) support on Fast Ethernet and Gig Links, IPsec; Dual-band Wi-Fi and Wi-Fi Direct	
	Optional: Dual-band Wi-Fi and Wi-Fi Direct, ⁶ NFC touch-to-print, ⁷ second Ethernet port	Optional: NFC touch-to-print, ⁷ second Ethernet port	
Network protocols	Via built-in networking solution: TCP/IP, IPv4, IPv6 Print: TCP-IP port 9100 Direct Mode, LPD (raw queue support only), Web Services Printing, IPP 2.0, Apple AirPrint, ³² HP ePrint, ³³ FTP Print, Google Cloud Print Discovery: SLP, Bonjour®, Web Services Discovery IP Config: IPv4 (BootP, DHCP, AutoIP, Manual, TFTP Config, ARP-Ping), IPv6 (Stateless Link-Local and via Router, Statefull via DHCPv6) Management: SNMPv2/v3, HTTP/HTTPS, Telnet, TFTP Config, Syslog Security: SNMPv3, SSL Cert Management, IPSec/Firewall, ACL, 802.1x		
Security management	SNMPv3, Web Services over port 7627, SSL/TLS 1.0/1.1/1.2, FIPS 140-2, Certificate Management, Embedded Web Server, WPA2-Enterprise, 802.1X authentication (EAP-PEAP, EAP-TLS), IPSec/Firewall with Certificate, Pre-Shared Key Authentication, and Kerberos Authentication, HP Web Jetadmin 10, ¹⁶ IPsec Configuration using IPsec Plug-in		
Printer management	HP Device Toolbox, HP JetAdvantage Security Manager, ¹⁷ HP Printer Assistant, HP Web Jetadmin ¹⁶ software, HP SNMP Proxy Agent, HP WS Pro Proxy Agent, Printer Administrator Resource Kit for HP Universal Print Driver ²⁰ (Driver Configuration Utility and Driver Deployment Utility, Managed Printing Administrator)		
Compatible operating systems³⁴	Windows® OS: Windows Client OS (32/64 bit), Windows 10, Windows 8.1, Windows 7 Starter Edition SP1, UPD Windows 7 Ultimate Mobile OS: iOS, Android™ Mac OS: High Sierra v10.13, Mojave v10.14, Catalina v10.15 Discrete PCL6 Printer Drivers: For more information, see support.hp.com UPD PCL6/PS Printer Drivers: ²⁰ For more information, see http://hp.com/go/upd		
Compatible network operating systems	Windows Server® 2008 R2 64-bit, Windows Server 2008 R2 64-bit (SP1), Windows Server 2012 64-bit, Windows Server 2012 R2 64-bit, Windows Server 2016 64-bit, Windows Server 2019 64-bit, Failover Cluster 2008 R2, Failover Cluster 2012 R2, Terminal server 2008 R2, Remote Desktop server 2012 R2 Citrix® Server 6.5, Citrix XenApp & XenDesktop® 7.6, Novell iPrint server, Citrix Ready Kit Certification - Up to Citrix Server 7.18; For more information, see http://citrixready.citrix.com Linux®: For more information, see http://developers.hp.com/hp-linux-imaging-and-printing Unix®: For more information, see http://hp.com/go/unixmodelscripts UPD PCL6/PS Printer Drivers: ²⁰ For more information, see http://hp.com/go/upd		
System requirements, Windows	A compatible operating system (see above); 2 GB available hard disk space; Internet connection or USB port; Internet browser; OS hardware requirements (see microsoft.com)		
System requirements, Macintosh	A compatible operating system (see above); 2 GB available hard disk space; Internet connection or USB port; OS hardware requirements (see apple.com)		
Dimensions (width x depth x height)	Operating: 23.03 x 26.10 x 27.95 in (585 x 663 x 710 mm) Maximum: ³⁵ 36.26 x 26.10 x 27.95 in (921 x 663 x 710 mm)	Operating: 23.03 x 28.03 x 45.67 in (585 x 712 x 1160 mm) Maximum: ³⁵ 44.88 x 35.51 x 45.67 in (1140 x 902 x 1160 mm)	Operating: 27.76 x 28.03 x 45.47 in (705 x 712 x 1155 mm) Maximum: ³⁵ 45.28 x 35.51 x 45.47 in (1150 x 902 x 1155 mm)
Weight (with print cartridges)	156.3 lb (70.9 kg)	254.6 lb (115.5 kg)	289.2 lb (131.2 kg)
What's in the box	HP Color LaserJet Enterprise MFP M776; HP Black Original LaserJet Toner Cartridge (~16,000 pages), HP Cyan, Magenta and Yellow Original LaserJet Toner Cartridges (~13,000 pages each), and 4 HP Original LaserJet Imaging Drums (~65,000 pages each color); Getting started Guide; Power cord; USB cable not included (purchase separately)		
Downloadable software	From 123.hp.com : HP Easy Start (Guided Software Install for Windows and Mac) Windows OS: From hp.com , Full solution software and drivers, Basic solution software and drivers, HP PCL6 XPS Discrete Print Driver, Product documentation and support Mac OS: From hp.com , HP Easy Start (Guided Software Install), HP Mac PS Print Driver, HP Easy Admin Mobile OS: iOS: For more information, see hp.com/go/businessmobileprinting ; Android: For more information, see hp.com/go/businessmobileprinting Printer administrators: From hp.com , Printer Administrator Resource Kit (Driver Configuration Utility – Driver Deployment Utility – Managed Printing Administrator), HP Universal Print Drivers ²⁰ PCL6 GDI and PS GDI for Windows, HP ePrint Software ³³ (Mobile Driver for Windows), SAP Print Drivers: For more information, see support.hp.com/us-en/document/c05051702 , HP Web Jetadmin, ¹⁶ HP JetAdvantage Security Manager, ¹⁷ HP Roam, ⁸ HPLIP Linux Printer Driver: For more information, see hplipopensource.com/hplip-web/index.html ; Unix Model Script Printer Driver: For more information, see hp.com/go/unixmodelscripts , ReadIris		
Warranty	One-year, next-business day, onsite warranty. Warranty and support options vary by product, country, and local legal requirements. Contact your Vendor or go to hp.com/support to learn about HP world-class service and support options in your region.		

Environmental and power specifications

	HP Color LaserJet Enterprise MFP M776dn	HP Color LaserJet Enterprise Flow MFP M776z	HP Color LaserJet Enterprise Flow MFP M776zs
Environmental ranges			
Temperatures	Recommended operating range: 59 to 80.6° F (15 to 27° C); Operating range: 50 to 90.5° F (10 to 32.5° C); Storage range: -4 to 104°F (-20 to 40°C)		
Relative Humidity	Recommended operating range: 30 to 70% RH; Operating range: 10 to 80% RH		
Acoustic pressure emissions³⁶	Ready mode: 32 dB(A) Active print: 52 dB(A) Active scan: 50 dB(A)	Ready mode: 32 dB(A) Active print: 51 dB(A) Active scan: 50 dB(A)	Ready mode: 32 dB(A) Active print: 53 dB(A) Active scan: 50 dB(A)
Acoustic power emissions³⁶	Ready mode: 4.9 B(A) Active print: 6.7 B(A) Active scan: 6.6 B(A)	Ready mode: 4.9 B(A) Active print: 6.7 B(A) Active scan: 6.6 B(A)	Ready mode: 4.9 B(A) Active print: 6.9 B(A) Active scan: 6.6 B(A)
Power specifications³⁷			
Power supply	Built-in 115V or 220V, 12A; Input voltage: 110 to 127 VAC (+/- 10%), 220 to 240 VAC (+/- 10%), 50/60 Hz (+/- 3 Hz), 6A		
Power consumption	Printing: 900 watts; Ready: 100 watts; Sleep: 0.8 watts; HP Auto-On/Auto-Off: 0.8 watts; Auto-Off: 0.07 watts; Off: 0.07 watts		
Typical Electricity Consumption (TEC) ³⁸	ENERGY STAR® (Ver. 3.0): 0.734 kWh/Week		
Energy-saving features	HP Auto-On/Auto-Off Technology; ³⁹ Instant-on Technology		
Environmental specifications	ENERGY STAR certified, CECP, EPEAT Silver ⁴⁰	ENERGY STAR certified, CECP, EPEAT Silver ⁴⁰ Special government options available with EPEAT Gold	ENERGY STAR certified, CECP, EPEAT Silver ⁴⁰ Special government options available with EPEAT Gold
Safety and regulatory compliance	IEC 60950-1:2005 +A1:2009 +A2:2013 (International); EN60950-1:2006 +A11:2009 +A1:2010 +A12:2011 +A2:2013 (EU); EN 60825-1:2014 / IEC 60825-1:2014 (Class 1 Laser Product); EN 62479:2010 / IEC 62479:2010; Low Voltage Directive 2014/35/EU with CE Mark (Europe); GS Certificate (Germany, Europe); UL/cUL Listed and UC CoC (US/Canada); CAN/CSA C22.2 No. 60950-1-07 2nd Ed. 2011-12; Compliance with Laser safety standards 21 CFR 1040.10 and 1040.11 except for deviations pursuant to Laser notice No. 50, Dated June 24, 2007; Other safety approvals as required by individual countries		
Electromagnetic emission standard	CISPR 22:2008 (International) - Class A, CISPR 32:2012 (International) - Class A, EN 55032:2012 (EU) - Class A, EN 61000-3-2: 2014, EN 61000-3-3: 2013, EN 55024: 2010, EMC Directive 2014/30/EU, FCC 47 CFR Part 15 Class A/ICES-003, Issue 6 Class A; Other EMC approvals as required by individual countries		
Telecom compliance certification	Telecom Wired: ES 203 021-1 v2.1.1; ES 203 021-2 v2.1.2; ES 203 021-3 v2.1.2; FCC Rules and Regulations 47 CFR Part 68; Telecom Wireless: FCC CFR 47 Part 15 Subpart C & E; RSS 247 Issue 1, 2015 & RSS 102 Issue 5, 2015; EN 300 328 V2.1.1; EN 301 893 V1.8.1; EN 301 893 V2.1.0		

Ordering information

Use accessories and supplies specifically designed for the MFP to help provide efficient performance. To order the accessories and supplies listed here, go to hp.com. To contact HP by country, please visit hp.com/go/contact. If you don't have access to the Internet, contact your qualified HP dealer, or call HP (U.S.) at (800) 282-6672.

Product	HP Color LaserJet Enterprise MFP M776dn HP Color LaserJet Enterprise Flow MFP M776z HP Color LaserJet Enterprise Flow MFP M776zs	T3U55A 3WT91A T3U56A
Supplies⁴¹	HP 659A Black LaserJet Toner Cartridge (~16,000 pages) HP 659A Cyan LaserJet Toner Cartridge (~13,000 pages) HP 659A Yellow LaserJet Toner Cartridge (~13,000 pages) HP 659A Magenta LaserJet Toner Cartridge (~13,000 pages) HP 659X Black LaserJet Toner Cartridge (~34,000 pages) HP 659X Cyan LaserJet Toner Cartridge (~29,000 pages) HP 659X Yellow LaserJet Toner Cartridge (~29,000 pages) HP 659X Magenta LaserJet Toner Cartridge (~29,000 pages) HP 660A Original LaserJet Imaging Drum (~65,000 pages, universal for all 4 colors) HP LaserJet 110V Fuser Kit (~150,000 pages) HP LaserJet 220 Fuser Kit (~150,000 pages) HP LaserJet Image Transfer Belt Kit (~150,000 pages) HP LaserJet Toner Collection Unit (~90,000 pages) M776zs model only: HP Staple Refill Cartridge	W2010A W2011A W2012A W2013A W2010X W2011X W2012X W2013X W2004A 4YL16A 4YL17A 3WT89A 3WT90A J8J96A
Accessories	HP LaserJet 550-sheet Paper Tray ¹⁰ HP LaserJet Stand ¹⁰ HP LaserJet 2x550-sheet Paper Tray and Stand ¹⁰ HP LaserJet 2,700-sheet High-capacity Input Tray and Stand ¹⁰ HP TAA Version Secure Hard Disk Drive (U.S. Government) HP Internal USB Ports HP Foreign Interface Harness HP 1 GB DDR3x32 144-Pin 800MHz SODIMM HP 2 GB DDR3x32 144-Pin 800MHz SODIMM HP Jetdirect 2900nw Print Server HP Jetdirect 3100w BLE/NFC/Wireless Accessory HP USB Universal Card Reader HP HIP2 Keystroke Reader HP Legic Reader HP Accessibility Kit HP Accessibility Assistant HP 2 GB DDR3x32 144-Pin 800MHz DIMM TAA (U.S. Government) HP SmartCard NIPRNet Solution for US Government (U.S. only) (requires B5L28A) HP SmartCard SIPRNet Solution for US Government (U.S. only) (requires B5L28A) M776dn model only: HP MFP Analog Fax 700 Accessory (WW, no BBU)	T3V27A T3V28A T3V29A T3V30A 5EL03A B5L28A B5L31A E5K48A E5K49A J8031A 3JN69A X3D03A Y7C05A 4QL32A 2TD64A 2MU47A 2NR09A CC543B F8B30A 2EH31A
Solutions	HP Web Jetadmin: hp.com/go/wja HP Universal Print Driver: hp.com/go/upd HP JetAdvantage Security Manager: hp.com/go/securitymanager HP JetAdvantage On Demand Cloud Solutions: hp.com/go/jetadvantageondemand HP LaserJet fonts, barcodes, and IPDS Emulation available at hp.com/go/laserjetfonts To learn more about available infrastructure, management, and workflow solutions, visit hp.com/go/printing_solutions	

Notes

¹ In July 2018, HP was named Buyers Lab's Most Reliable Business Printer & MFP Brand by the analysts at Buyers Lab (BLI), based on lab testing from 2012 to 2018. For more information, see keypointintelligence.com/news/awards.

² Based on HP review of 2018 published security features of competitive in-class printers. Only HP offers a combination of security features that can monitor to detect and automatically stop an attack then self-validate software integrity in a reboot. For a list of printers, visit: hp.com/go/PrintersThatProtect. For more information, visit: hp.com/go/printersecurityclaims.

³ Measured using ISO/IEC 24734, excludes first set of test documents. For more information, see hp.com/go/printerclaims. Exact speed varies depending on the system configuration, software application, driver, and document complexity.

⁴ Fax capabilities are optional on the HP Color LaserJet Enterprise MFP M776dn model.

⁵ An administrator must enable the easy-access USB port before use.

⁶ Dual-band Wi-Fi® and Wi-Fi Direct with Bluetooth® Low Energy is standard on the HP Color LaserJet Enterprise Flow MFP M776z/zs models and optional on the M776dn model with purchase of the HP Jetdirect 3100w BLE/NFC/Wireless Accessory (3JN69A). Wireless operations are compatible with 2.4 GHz and 5.0 GHz operations only. Wi-Fi is a registered trademark of Wi-Fi Alliance®. Bluetooth is a trademark owned by its proprietor and used by HP Inc. under license. Learn more at hp.com/go/mobileprinting.

⁷ NFC touch-to-print is optional and can be added with purchase of the HP Jetdirect 3100w BLE/NFC/Wireless Accessory (3JN69A). Mobile device must support Near-Field Communication (NFC)-enabled printing. For more information, see hp.com/go/businessmobileprinting.

⁸ Subscription or accessory may be required. For more information, visit hp.com/go/roam. To enable HP Roam, some devices may require firmware to be upgraded and an optional accessory to add Bluetooth® Low Energy (BLE) beaconing capabilities. Customer can purchase the HP Jetdirect 3100w BLE/NFC/Wireless accessory or the RadBeacon USB.

⁹ Convenience stapler and Stapler/Stacker inner finisher accessory are only available on the HP Color LaserJet Enterprise Flow MFP M776zs model.

¹⁰ Maximum input capacity of 3,900 sheets is only available on the HP Color LaserJet Enterprise MFP M776dn model and is achieved with the addition of one optional 550-sheet tray and the 2,700-sheet HCl. The M776z/zs models may not add any additional input trays. The HP Color LaserJet Enterprise MFP M776dn model may add up to one 1x550-sheet paper tray and one of the following: 2x550-sheet paper tray and stand, or 2,700-sheet HCl paper tray and stand, or the HP LaserJet stand.

¹¹ Based on HP internal testing using normalized TEC value, 2019.

¹² All LaserJet Pro, Enterprise, Managed, and PageWide products with introductions beginning in September 2019 will include consistent worldwide default duplex settings (across bundles/drivers); product introductions before September 2019 may have inconsistent default duplex settings across drivers.

¹³ Program availability varies. For more information, visit hp.com/recycle.

¹⁴ Some features require additional purchase. A FutureSmart service pack update may be required to activate security features. Learn more at hp.com/go/printsecurity.

¹⁵ Solutions deployed through the Hardware Integration Pocket (HIP) may require additional purchase. The HP Color LaserJet Enterprise MFP M776 series models come with a second-generation HIP.

¹⁶ HP Web Jetadmin is available for download at no additional charge at hp.com/go/wia.

¹⁷ HP JetAdvantage Security Manager must be purchased separately. For details, see hp.com/go/securitymanager.

¹⁸ HP JetAdvantage Secure Print works with any network-connected printer or MFP. On-device authentication is available for many HP LaserJet, PageWide, and OfficeJet Pro devices and selected non-HP devices. Some devices may require a firmware upgrade. Internet connection required for cloud storage and retrieval of print jobs. Print-job release from a mobile device requires a network connection and QR code. For more information and a list of supported printers and MFPs, see hp.com/go/JetAdvantageSecurePrint.

¹⁹ Color access control capabilities vary from device to device.

²⁰ The HP Universal Print Driver is available for download at no additional charge at hp.com/go/upd.

²¹ Advanced workflow features like pull-out keyboard, HP EveryPage, auto-crop, auto-orientation, grayscale optimization, and optical character recognition (OCR) are only available on the HP Color LaserJet Enterprise Flow MFP M776z/zs models.

²² The HP Color LaserJet Enterprise MFP M776dn scans at speeds up to 90 ppm/180 ipm (simplex/duplex). The HP Color LaserJet Enterprise Flow MFP M776z/zs models scan at speeds up to 120 ppm/240 ipm (simplex/duplex). Scan speeds measured from ADF. Actual processing speeds may vary depending on scan resolution, network conditions, computer performance, and application software.

²³ HP recommends that the number of scanned pages per month be within the stated range for optimum device performance, based on factors including supplies replacement intervals and device life over an extended warranty period.

²⁴ HP recommends that the number of printed pages per month be within the stated range for optimum device performance, based on factors including supplies replacement intervals and device life over an extended warranty period.

²⁵ Average black and color composite (C/M/Y) declared toner yields based on ISO/IEC 19798 and continuous printing. Actual yields vary considerably based on images printed and other factors. For details, see hp.com/go/learnaboutsupplies. Optional high-yield cartridges are not included with printer; please purchase separately.

²⁶ Measured using ISO/IEC 17629. For more information see hp.com/go/printerclaims. Exact speed varies depending on the system configuration software application driver and document complexity.

²⁷ Measured after 15 minutes in sleep. Exact speed varies depending on the system configuration, software application, driver, document complexity, and time in sleep.

²⁸ Scan software not included in box. HP Scan and TWAIN driver available for download: hp.com/support.

²⁹ Based on standard ITU-T test image #1 at standard resolution and MMR encoding, the HP fax device can transmit at 3 sec/page for V.34 and 6 sec/page for V.17.

³⁰ The purchase of an accessory DIMM will enable the use of HP Workpath apps, but does not provide additional ramdisk or other benefits. A firmware update may be required for configuration page to accurately reflect the accessory DIMM is installed.

³¹ Duty cycle is defined as the maximum number of pages per month of imaged output. HP recommends that the number of printed pages per month be within the stated range for optimum device performance, based on factors including supplies replacement intervals and device life over an extended warranty period.

³² Supports the following devices running iOS 4.2 or later: iPad®, iPad 2, iPhone® (3GS or later), iPod touch® (3rd generation or later). Works with HP's AirPrint®-enabled printers and requires the printer be connected to the same network as your iOS device. Wireless performance is dependent on physical environment and distance from the access point.

³³ Printer requires ePrint account registration. App or software may be required. Wireless operations are compatible with 2.4 GHz operations only. Learn more at hp.com/go/mobileprinting.

³⁴ Full solution software available only for Windows® 7 and newer, UPD software available only for Windows 7 and newer, HP Software for Mac and Windows is no longer included on the CD, but can be downloaded from 123.hp.com. Legacy Windows Operating Systems (XP, Vista®, and equivalent servers) get print and scan drivers only with a reduced feature set, Windows RT OS for Tablets (32- and 64-bit) uses a simplified HP print driver built into the RT OS.

³⁵ Maximum dimensions of the device are measured by the standard configuration with the multipurpose tray extended.

³⁶ Acoustic values are subject to change. For current information see hp.com/support. Configuration tested: base model, simplex printing, A4 paper at an average of 46 ppm.

³⁷ Power requirements are based on the country/region where the printer is sold. Do not convert operating voltages. This will damage the printer and void the product warranty. Power consumption values typically based on measurement of 115V device.

³⁸ Blue Angel (BA) TEC is equal to Best TEC. Power requirements are based on the country/region where the printer is sold. Do not convert operating voltages. This will damage the printer and void the product warranty. ENERGY STAR® Version 3.0 TEC is not comparable to ENERGY STAR Version 2.0 TEC values or BA TEC values. BA uses ENERGY STAR Version 2.0 TEC. ENERGY STAR value typically based on measurement of 115V device.

³⁹ HP Auto-On/Auto-Off Technology capabilities are subject to printer and settings.

⁴⁰ EPEAT® registered where applicable. EPEAT registration varies by country. See epeat.net for registration status by country.

⁴¹ Stated yield is based on 5% coverage and may vary based on coverage and media type used, media size, short edge feed on A3 devices, and job size.

Sign up for updates
hp.com/go/getupdated



© Copyright 2019 HP Development Company, L.P. The information contained herein is subject to change without notice. The only warranties for HP products and services are set forth in the express warranty statements accompanying such products and services. Nothing herein should be construed as constituting an additional warranty. HP shall not be liable for technical or editorial errors or omissions contained herein.

AirPrint, Apple, iPad, iPhone, and iPod touch are trademarks of Apple Inc. Android and Google Cloud Print are trademarks of Google Inc. Bluetooth is a trademark owned by its proprietor and used by HP Inc. under license. Citrix and XenDesktop are registered trademarks of Citrix Systems, Inc. and/or one more of its subsidiaries, and may be registered in the United States Patent and Trademark Office and in other countries. ENERGY STAR is a registered trademark owned by the U.S. Environmental Protection Agency. Linux is the registered trademark of Linus Torvalds in the U.S. and other countries. Microsoft, SharePoint, Windows, Windows Server, and Windows Vista are U.S. registered trademarks of the Microsoft group of companies. UNIX is a registered trademark of The Open Group.

4AA7-6144ENW, November 2019, Rev. 1

