



Isle of Wight
Moth Report
2019



Isle of Wight Moth Report 2019

Table of Contents

Review

Systematic List

- [Eriocraniidae](#)
- [Nepticulidae](#)
- [Opostegidae](#)
- [Heliozelidae](#)
- [Incurvariidae](#)
- [Psychidae](#)
- [Tineidae](#)
- [Gracillariidae](#)
- [Yponomeutidae](#)
- [Ypsolophidae](#)
- [Glyphipterigidae](#)
- [Argyresthiidae](#)
- [Praydidae](#)
- [Oecophoridae](#)
- [Lypusidae](#)
- [Depressariidae](#)
- [Cosmopterigidae](#)
- [Gelechiidae](#)
- [Batrachedridae](#)
- [Coleophoridae](#)
- [Elachistidae](#)
- [Momphidae](#)
- [Scythrididae](#)
- [Pterophoridae](#)
- [Epermeniidae](#)
- [Tortricidae](#)
- [Sesiidae](#)
- [Zygaenidae](#)
- [Pyralidae](#)
- [Crambidae](#)
- [Sphingidae](#)
- [Geometridae](#)
- [Erebidae](#)
- [Noctuidae](#)

Migrant Summary

Acknowledgements

Review

Although the Isle of Wight escaped the extremes of a particularly cold spell that gripped the country at the end of January poor weather for much of the month might explain the relatively slow start to the recording year. Likewise the early migrant highlight of a Red-headed Chestnut (*Conistra erythrocephala*) at a site in Bonchurch might be thanks to a warm spell at the end of February that saw the highest ever February temperature recorded at Kew Gardens.

In March *Agonopterix purpurea* was recorded in Shanklin and Bonchurch, the first since 1959. A single Barred tooth-striped (*Trichopteryx polycommata*) was found during torchlight searches at St. Catherine's Point and at Freshwater Cliffs the mines and larvae of *Scrobipalpa ocellatella* were found on Sea Beet, the first vice-county record since 1978.

Moth trapping at Briddlesford Copse proved worthwhile, in April producing the Island's third record of *Semioscopis steinkellneriana* and second record of *Pammene argyrana*, then in May the second record of *Agnoea subochreella*. Elsewhere, the first of three Dewick's Plusia (*Macdunnoughia confusa*) was taken at Bonchurch in mid-May.

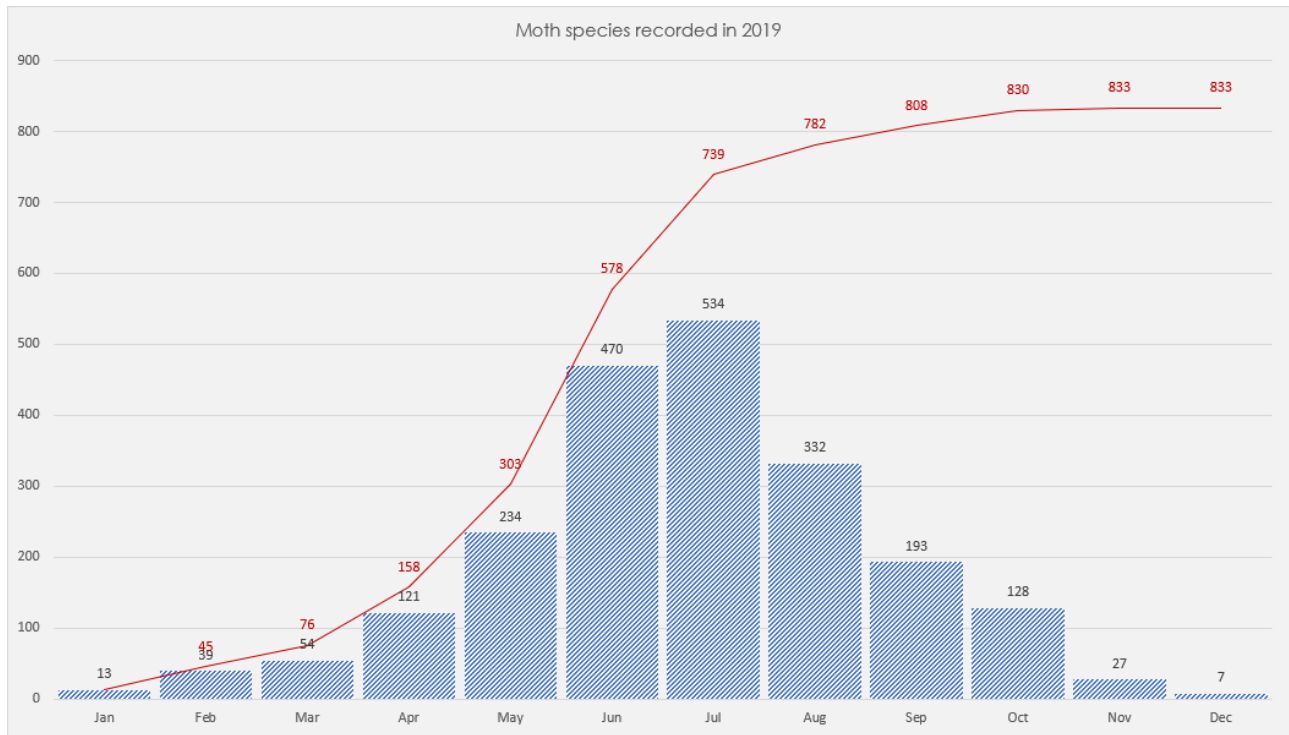
There were three records of *Agrotera nemoralis* in June, a species that may well have established a foothold in the southeast of the Island. Also during June a total of 46 Red-tipped Clearwings (*Synanthedon formicaeformis*) was recorded, this species recorded only once before and demonstrating how effective the pheromone lures are. At the end of the month a single *Argolamprotes micella* was trapped in Shanklin and was the first for the Isle of Wight.

The next two months were very productive. The fourth vice-county record of Druid (*Aedia funesta*), three Plumed Fan-foot (*Pechipogo plumigeralis*), a Pale Shoulder (*Acontia lucida*) at Totland and a Four-spotted (*Tyta luctuosa*) at Carisbrooke. There were new vice-county records with Summer Fruit Tortrix (*Adoxophyes orana*) at Bonchurch, *Paracorsia repandalis* at Totland and *Ancylolomia tentaculella* at Shanklin. Four records of *Acrobasis tumidana* included a remarkable count of seven at Bonchurch on 25 July. Highlight for August was the second vice-county record of White Spot (*Hadena albimacula*) with one to light at Cranmore and at the end of the month the same site produced Neglected Rustic (*Xestia castanea*).

The autumn was affected by rather high rainfall but once again the Island escaped the worst of it with figures of 130-150% of average rainfall¹. Perhaps unsurprisingly moth trapping was relatively quiet and it was an unremarkable migrant season. Dewick's Plusia (*Macdunnoughia confusa*) were recorded at Bonchurch in September and at Brook in October where a Grass Webworm (*Herpetogramma licarsialis*) was also trapped and was the last significant moth of the year.

Although recording effort was slightly reduced, more than 14000 records were received from 38 contributors and covering 149 sites. A total of 833 species was recorded.

With so many moth species recorded it has been necessary to exclude many from the report, the more common and widespread species are not described, and some records have been excluded where identification and verification criteria were not met. It is hoped that nothing important has been omitted.



Moth recording by month

The following criteria for the inclusion in the report were established for the combined Hampshire and IW Report and are continued here.

- Scarce species at vice-county level
- Fewer than 25 vice-county records
- Scarce species with fewer than 50 vice-county records in new hectads (10km squares)
- Otherwise notable records such as those indicating significant range expansion, unusual migration

Many species of micro-moth and a few macro-moths are difficult if not impossible to identify as adults without recourse to dissection. The records included in this report have **all** been subject to dissection where necessary, although the dissection is not commented on in every case in the systematic list.

Notes on the species accounts:

- Species name is followed by authority and national status
- All records are of adult moths to MV traps, unless otherwise stated
- New vice-county records are indicated with highlighted species names
- New hectad records are indicated by an asterisk after the site name

Systematic list

Sequence and nomenclature follow Agassiz, Beavan and Heckford², including the 2016 and 2019 updates.

Eriocraniidae

2.007 *Eriocrania semipurpurella*

(Stephens, 1835)

Common

Tenanted leaf mines in Silver Birch (*Betula pendula*) at Blackpan Common on 17 May. Several collected and examined (IOu).

Nepticulidae

4.076 *Ectoedemia decentella*

(Herrich-Schäffer, 1855)

Nationally scarce (Nb)

Singletons were recorded at Shanklin on 01 June and 02 September (IOu).

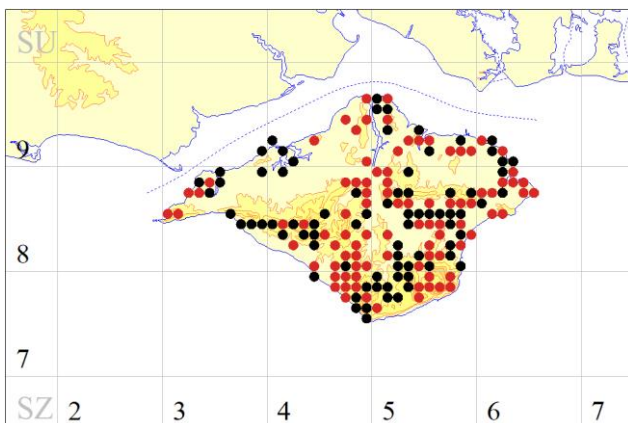
Opostegidae

5.001 *Opostega salaciella*

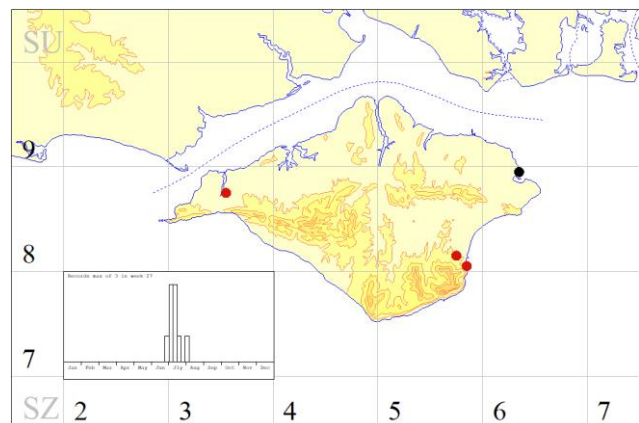
(Treitschke, 1833)

Local

Almost certainly more widespread than the records suggest. The larvae of this moth mine the leaves of Sheep's Sorrel (*Rumex acetosella*) which is widespread and common on the more acidic and sandy soils across the Island. One trapped at Upper Chine, Shanklin on 25 June was the only record this year (IOu).



Sheep's Sorrel (*Rumex acetosella*)



Opostega salaciella

Heliozelidae

6.001 *Antispila metallella*

([Denis & Schiffermüller], 1775)

Local

A leaf mine was found on Common Dogwood (*Cornus sanguinea*) with practice slits visible and a cut-out measuring 5.5 mm at Spindler's Road, St. Lawrence on 12 July (PB).

6.003 *Heliozela sericiella*

(Haworth, 1828)

Local

The adults moths are day-flying and can be sometimes be found around the lower branches of the larval food plant, Pedunculate Oak (*Quercus robur*). One collected in Shanklin on 21 April was confirmed by dissection (IOu).

Incurvariidae

8.001 *Incurvaria pectinea*

Haworth, 1828

Local

One at Shanklin on 25 April with two at the same site 05 May (IOu).

Psychidae

11.006 *Taleporia tubulosa*

(Retzius, 1783)

Local

Three larvae at America Wood, one with parasitoid exit hole on 23 May (IOu). One larva at Upper Hyde on fence panel adjacent to old railway line on 27 May (IOu). Five larvae at America Wood on 12 August (IOu).

11.008 *Luffia lapidella*

(Goeze, 1783)

pRDB1

One larva at found on a wall at Shanklin Upper Chine on 18 March (IOu). 200 larvae at Shore Road, Bonchurch, on the south facing wall leading down to the bay on 07 July (PB).

Tineidae

12.010 *Morophaga choragella*

([Denis & Schiffermüller], 1775)

Local

One at Shanklin on 25 June (IOu), one to actinic light at Freshwater Fruit Farm also on 25 June (PB). Two at Parkhurst Forest on 28 June (IOu) and one at Bonchurch on 15 August (JHa).



Morophaga choragella – Freshwater © Phil Barden

Nemapogon clematella – Fattingspark Copse © Phil Barden

12.012 *Triaxomera parasitella*

(Hübner, 1796)

Local

Not recorded between 1969 and 2014, since when it has been reported annually suggesting it had been overlooked. The only record this year was of two at Shanklin on 03 June (IOu). The larvae feed on bracket fungi and dead wood.



Triaxomera parasitella – Shanklin

12.021 *Nemapogon clematella*

(Fabricius, 1781)

Local

Larval feeding signs on a dead Hazel (*Corylus avellana*) branch at Fattingspark Copse on 03 July (PB).

Gracillariidae

15.007 Azalea Leaf Miner (*Caloptilia azaleella*)

(Brants, 1913)

Local

An Asian species that has become naturalised through accidental introduction but which remains scarce with only five IW records since the first in 2007. This year three singletons were recorded at Shanklin between 01 June and 23 October (IOu).

15.009 *Caloptilia robustella*

Jäckh, 1972

Common

Although common and widespread there are just eight previous records owing to the difficulty in separating this species from *Caloptilia alchimiella*. A male was trapped at Shanklin on 25 May (IOu).

15.018 *Povolnya leucapennella*

(Stephens, 1835)

Nationally scarce (Nb)

There were three records this year with singletons at Bonchurch on 20 February and 07 October (JHa) and one at Shanklin on 20 July (IOu).



Povolnya leucapennella – Bonchurch © James Halsey

15.032 *Parornix finitimella*

(Zeller, 1850)

Common

Leaf mines were found on Blackthorn (*Prunus spinosa*) at Afton Marsh on 10 October (SD).

15.041 *Phyllonorycter platani*

(Staudinger, 1870)

Local

Tenanted and vacated mines found on *platanus* sp. at Shanklin Manor on 11 October (IOu).

15.065 *Phyllonorycter esperella*

(Goeze, 1783)

Local

Vacated mines were found on Hornbeam (*Carpinus betulus*) leaves collected from Shanklin Big Mead. Characteristic mines with a blister on upper surface, contracting and causing leaf to fold upwards, 28 September (IOu).

15.082 *Phyllonorycter klemannella*

(Fabricius, 1781)

Common

Found on *Alnus sp.* beside the road at Freshwater Causeway on 25 June (PB). An occupied mine on Common Alder (*Alnus glutinosa*) leaf was collected from Freshwater Causeway on 05 July and the moth bred with eclosion on 14 July (PB).

15.093 *Phyllocnistis xenia*

Hering, 1936

Nationally scarce (Nb)

Two 'snail' mines on leaves of White Poplar (*Populus alba*) at Yarmouth on 05 July (PB) and another at Bembridge School on 08 July (PB). Ten mines on Grey Poplar (*Populus × canescens*) at Afton Marsh on 30 September (SD).

Yponomeutidae

16.010 *Zelleria hepariella*

Stainton, 1849

Local

Although widespread this species is uncommon and there were just four vice-county records prior to 2019. However this year there were three records from Shanklin, one was trapped on 08 August, two on 11 August and the last on 31 October (IOu).

16.014 *Pseudoswammerdamia combinella*

(Hübner, 1786)

Common

Almost certainly under-recorded on the Island but there were six reports this year. Six were trapped in Shanklin over five nights between 20 April and 14 June (IOu) and one at Westside Farm, Chale on 20 May (Andy Trout).

Ypsolophidae

17.001 *Ypsolopha mucronella*

(Scopoli, 1763)

Local

There are just eight previous records of this species. Singletons were recorded Bonchurch on 10 March and 08 May (JHa). The larvae feed on Spindle (*Euonymus europaeus*).

17.002 *Ypsolopha nemorella*

(Linnaeus, 1758)

Local

A distinctive moth with a dark spot on a pale brown forewing and a noticeable resting posture. One came to actinic light at Dunnose, Bonchurch on 10 July (PB). The larvae feed on Honeysuckle (*Lonicera periclymenum*).

17.008 *Ypsolopha alpella*

([Denis & Schiffermüller], 1775)

Local

This species is uncommon on the Isle of Wight and there are just six previous records. One was trapped at Bonchurch on 25 September, the second for that site (JHa).

Glyphipterigidae

19.002 *Glyphipterix thrasonella*

(Scopoli, 1763)

Common

A distinctive micro-moth whose larvae are thought to feed within the stems of rushes. One came to actinic light at Afton Marsh on 25 June (PB).

Argyresthiidae

20.005 *Argyresthia trifasciata*

Staudinger, 1871

Local

This species is naturalised through accidental introduction and was first recorded on the Island in 2013 though it remains scarce here. One at Bonchurch on 26 May was the fourth record (JHa). The larvae feed on various conifer species including Lawson Cypress (*Chamaecyparis lawsoniana*) and Leyland Cypress (*Cupressus × leylandii*).

20.018 *Argyresthia spinosella*

Stainton, 1849

Common

Just one record this year with a single to light at Shanklin on 11 June (IOu). *Argyresthia conjugella* and *Argyresthia semifusca* are similar in appearance but they can be identified with care, although this specimen was confirmed by dissection.

20.021 Cherry Fruit Moth (*Argyresthia pruniella*)

(Clerck, 1759)

Common

There were two records from Bonchurch with singletons on 24 July and 13 August (JHa).

20.022 *Argyresthia bonnetella*

(Linnaeus, 1758)

Common

Frequent amongst Hawthorn but rarely recorded. One was trapped at Bonchurch on 23 June (JHa).

Praydidae

22.003 *Prays ruficeps*

(Heinemann, 1854)

Local

Formerly believed to be a dark form of *Prays fraxinella* but now known to be a separate species. The first record was in 2017 but probably widespread and common. Found regularly at one site in Shanklin where five were trapped between 01 June and 02 August (IOu).

Oecophoridae

28.028 *Barea asbolaea*

(Meyrick, 1884)

Adventive

This adventive is now well established at Parkhurst Forest but was recorded on only two occasions this year. A female was trapped on 20 May (IOu) and 20 were recorded on 28 June (IOu), some to MV and others found by torchlight search.

Lypusidae

30.002 *Agnoea subochreella*

(Doubleday, 1859)

Nationally scarce (Nb)

The only previous record of this species is from 1969. Two males and a female were trapped at Briddlesford Copse on 15 May (IOu) and a female was trapped at Parkhurst Forest on 28 June (IOu).

30.003 *Agnoea josephinae*

(Toll, 1956)

Local

Fourteen were trapped at Parkhurst Forest on 28 June with several retained for examination (IOu). A species of deciduous woodland where the larvae feed on decaying leaf matter.

Depressariidae

32.002 *Semioscopis steinkellneriana*

([Denis & Schiffermüller], 1775)

Local

Recorded only twice before on the Island, the first by K.G. Blair at an unknown location some time before 1952 and the other at Freshwater in 1990. One came to actinic light at Briddlesford Copse* on 20 April (IOu).



Semioscopis steinkellneriana – Briddlesford Copse

32.009 *Agonopterix purpurea*

(Haworth, 1811)

Local

The last of ten previous records was from July 1959 so it was good to see four this year. The first was a male trapped at Shanklin on 20 March (IOu). A single was recorded at Bonchurch on 29 March (JHa) and there were two more from Shanklin, 06 August and 15 September (IOu).

32.023 *Agonopterix rotundella*

(Douglas, 1846)

Nationally scarce (Na)

This is a scarce species predominantly found on coastal cliffs where the larvae feed on Wild Carrot (*Daucus carota*). There was one report this year from Bonchurch on 28 March (JHa).

32.031 *Agonopterix alstromeriana*

(Clerck, 1759)

Common

This is a distinctive species and is probably more common than the few records suggest. One was trapped at Bonchurch on 18 June (JHa).

32.035 *Agonopterix yeatiana*

(Fabricius, 1781)

Local

Two to actinic light at Norman's Landing, Seaview* on 14 July (John Maskell).

32.050 *Telechrysis tripuncta*

(Haworth, 1828)

Nationally scarce (Nb)

Six were recorded at Bonchurch between 28 May and 12 June (JHa), one at Shanklin on 03 June (IOu) and one to actinic light at Kiln Place, Cranmore on 06 June (CH)

Cosmopterigidae

34.001 *Pancalia leuwenhoekella*

(Linnaeus, 1761)

Local

Usually found on downland where the larvae feed on Hairy Violet (*Viola hirta*) and Common Dog-violet (*Viola riviniana*). Three were swept at Rew Down, Ventnor on 12 July, all with white-tipped antennae (PB).

34.004 *Limnaecia phragmitella*

Stainton, 1851

Common

Three to LED light at Hersey Reserve on 23 July was the only record (IOu).

34.005 *Cosmopterix ziegelerella*

(Hübner, [1810])

Nationally scarce (Nb)

Twenty leaf mines found on Hop (*Humulus lupulus*) at Afton Marsh on 09 August (SD).

34.010 *Cosmopterix lienigiella*

Lienig & Zeller, 1846

Nationally scarce (Nb)

Sixteen to actinic light at Afton Marsh on 25 June with two at the same site on 27 June and two on 02 July (PB).

Gelechiidae

35.011 *Anacampsis populella*

(Clerck, 1759)

Common

Uncommon and with a few scattered records. Its variable appearance and similarity to *Anacampsis blattariella* necessitates confirmation by dissection. A male was found by day at Alverstone on 27 June (PB).



Anacampsis populella – Alverstone © Phil Barden

35.020 *Anarsia spartiella*

(Schrank, 1802)

Local

One to actinic light at Brook Down quarry on 28 June (PB), a male to actinic at Dunnose, Bonchurch on 10 July (PB) and one at Shanklin on 20 July (IOu).

35.037 *Thiotricha subocellea*

(Stephens, 1834)

Nationally scarce (Nb)

One to actinic at Dunnose, Bonchurch on 06 July (PB). The larvae feed on Wild Marjoram (*Origanum vulgare*).

35.052 *Aristotelia brizella*

(Treitschke, 1833)

Nationally scarce (Nb)

The larvae of this rather plain moth feed on Thrift (*Armeria maritima*). Four were swept at St. Helen's Duver* on 11 July (PB).

35.055 *Metzneria aestivella*

(Zeller, 1839)

Nationally scarce (Nb)

A male came to actinic light at Dunnose, Bonchurch on 06 July (PB) with two males at the same site on 10 July. All specimens confirmed by dissection (PB).

35.056 *Metzneria lappella*

(Linnaeus, 1758)

Local

Actinic light traps at Freshwater Fruit Farm produced a male on 26 June and a female on 04 July, both confirmed by dissection (PB).

35.064 *Argolamprotes micella*

([Denis & Schiffermüller], 1775)

Nationally scarce (Nb)

The first British record was from Devon in 1963 and today it remains largely confined to the southwest with a few records elsewhere. One at a Robinson trap at Shanklin on 30 June was the first record for the Island (IOu).

35.073 *Monochroa palustrellus*

(Douglas, 1850)

Nationally scarce (Nb)

The first IW record was in 1997 since when there have been three others. One to LED light at Hersey Reserve* on 23 July was from a new hectad (IOu).

35.085 *Athrips mouffetella*

(Linnaeus, 1758)

Common

Recorded regularly since 2011. One at Shanklin on 02 August (IOu).

35.091 *Sophronia semicostella*

(Hübner, [1813])

Local

First recorded in 2006 and just six times since. One at Shanklin on 24 July (IOu).

35.118 Beet Moth (*Scrobipalpa ocellatella*)

(Boyd, 1858)

Nationally scarce (Nb)

Mines and larvae on Sea Beet (*Beta vulgaris maritima*) at Freshwater Cliffs 22 March (SD) and two larvae at the same site on 10 October (SD).



Beet Moth larva – Freshwater Cliffs © Sue Davies



Cosmopterix zieglerella mine – Afton Marsh © Sue Davies

35.143 *Teleiodes luculella*

(Hübner, [1813])

Common

Recorded just once between 1856 and 2013 but there are now records from various locations across the Island. One to actinic light at Kiln Place, Cranmore on 31 May was the only one reported this year (CH).

35.151 *Carpatolechia proximella*

(Hübner, 1796)

Common

A female was taken at actinic light on Mottistone Down on 01 July and confirmed by dissection (PB).

35.160 *Stenolechia gemmella*

(Linnaeus, 1758)

Local

This species is associated with Oak with the larvae mining the young shoots. It was first recorded on the Island in 2017 since when there have been four more. This year one was trapped at Shanklin on 24 August (IOu).

35.161 *Parachronistis albiceps*

(Zeller, 1839)

Local

New to the Island in 2013, there were eight records by 2018. Two were seen this year with one to actinic light at Freshwater Fruit Farm* on 25 June and a male at the same site on 30 June (PB).



Parachronistis albiceps – Freshwater Fruit Farm © Phil Barden

Batrachedridae

36.001 *Batrachedra praeangusta*

(Haworth, 1828)

Common

One to actinic light at Norman's Landing, Seaview* on 14 July was from a new hectad (John Maskell).

Coleophoridae

This is a large family of moths with more than 100 species in Britain of which 74 have been recorded on the isle of Wight. Few of the moths can be identified as adults without dissection and most records are made at the larval stage when they construct distinctive protective cases and from which the name case-bearing moths comes.

37.003 *Coleophora limoniella*

(Stainton, 1884)

Nationally scarce (Nb)

At least fifty by day at Freshwater Causeway on 05 July (PB) with another ten swept at Norton Spit also on 05 July (PB). One of the more distinctive species as an adult. The larvae feed on Common Sea-lavender (*Limonium vulgare*).

37.036 *Coleophora conyzae*

Zeller, 1868

Nationally scarce (Nb)

Five larval cases on Ploughman's-spikenard (*Inula conyzae*) at Tennyson Down on 02 July. An adult was bred through and confirmed by dissection (PB).

37.038 *Coleophora lineolea*

(Haworth, 1828)

Local

A male to MV light at Shanklin on 03 August (IOu). The larvae feed on Hedge Woundwort, Betony and Horehound.

37.046 *Coleophora deauratella*

Lienig & Zeller, 1846

Local

An adult recorded in 2018 was not confirmed by dissection and the only other record is a historical report from 1900. A male was trapped in Shanklin on 02 July and dissected (IOu). The larvae feed on Red Clover (*Trifolium pratense*).

37.048 *Coleophora mayrella*

(Hübner, [1813])

Local

A male was trapped at Shanklin on 14 June (IOu). Another male was recorded at actinic light at Freshwater Bay on 04 July (PB). The larvae feed on the seed heads of White Clover (*Trifolium repens*).

37.049 Pistol Case-bearer (*Coleophora anatipennella*)

(Hübner, 1796)

Local

A female was recorded at actinic light at Compton Down on 29 June (PB). The larvae are polyphagous feeding on a number of woody plants and tree species such as Blackthorn (*Prunus spinosa*), Hawthorn (*Crataegus monogyna*) and Apple (*Malus* sp.).

37.050 *Coleophora albidella*

([Denis & Schiffermüller], 1775)

Local

There are just two previous records of this species. A male was trapped at Windy Corner, St. Catherine's Point on 23 June (IOu). The larvae feed on various willows (*Salix* sp.).

37.061 *Coleophora lixella*

Zeller, 1849

Nationally scarce (Nb)

Eight previous records are all from west Wight. One was swept at Compton Down on 25 June (PB). The larvae mines leaves of Wild Thyme (*Thymus polytrichus*).

37.093 *Coleophora peribenanderi*

Toll, 1943

Common

First recorded in 1981 at Freshwater. The larvae feed on thistles, predominantly Creeping Thistle (*Cirsium arvense*). A male was trapped at Shanklin on 28 July (IOu).

37.095 *Coleophora trochilella*

(Duponchel, [1843])

Nationally scarce (Nb)

Recorded for only the second time since 1969, a male to actinic light at Dunnose, Bonchurch on 06 July (PB).

37.099 *Coleophora striatipennella*

Nylander, [1848]

Common

There is just one previous record of this species on the Island, a male taken at Afton Marsh in 2016. There were two in 2019, a male at Shanklin on 11 June and a female from the same site on 31 July (IOu).

Elachistidae

38.007 *Elachista subocellea*

(Stephens, 1834)

Nationally scarce (Nb)

Typically found at woodland edges and clearwings. A male to actinic light at Brook Down quarry on 28 June was confirmed by dissection (PB). The larvae feed mine the leaves of the woodland grass, False-brome (*Brachypodium sylvaticum*).

38.025 *Elachista atricomella*

Stainton, 1849

Common

This is a widespread species found in woodland, rough grassland and verges and is common but under-recorded. A male was trapped at Shanklin on 25 May (IOu) and was followed by two to actinic light at Rew Down, Ventnor on 07 July (PB).

Momphidae

40.011 *Mompha langiella*

(Hübner, 1796)

Local

At least twenty mines on leaves of Enchanter's Nightshade (*Circaea lutetiana*) at Saltern Wood, Yarmouth on 05 July (PB). Mines numerous at Bracket's Plantation, Freshwater also on 05 July (PB).

Scythrididae

43.004 *Scythris picaepennis*

(Haworth, 1828)

Nationally scarce (Nb)

Apart from a larval record from St. Catherine's Point all recent reports have come from west Wight. Two were found by day at The Needles on 26 June (PB) and two were swept at Tennyson Down on 02 July and with one male dissected (PB).

Pterophoridae

45.011 Brindled Plume (*Amblyptilia punctidactyla*)

(Haworth, 1811)

Local

Records are concentrated in west Wight but individuals turn up occasionally at light traps elsewhere. One at Shanklin on 03 June was the only record tis year (IOu).

45.034 Dingy White Plume (*Merrifieldia baliodactylus*)

(Zeller, 1841)

Nationally scarce (Nb)

A male to actinic light at Mottistone Down on 01 July was confirmed by dissection (PB).

45.035 Horehound Plume (*Wheeleria spilodactylus*)

(Curtis, 1827)

pRDB2

One by day at Main Bench in small plants of White Horehound (*Marrubium vulgare*). Also one pupa and six larvae found on 26 June (PB).

45.037 Dusky Plume (*Oidaematophorus lithodactyla*)

(Treitschke, 1833)

Local

A worn male collected at Windy Corner on 23 June was confirmed by dissection (IOu). Another was trapped at Bonchurch on 10 July (JHa).

Epermeniidae

47.004 *Epermenia aequidentellus*

(Hofmann, 1867)

Nationally scarce (Na)

Recorded more frequently in recent years but just nine times between 1873 and 2018. There was one to actinic light at Dunnose, Bonchurch on 10 July (PB). The larvae mine leaves of Wild Carrot (*Daucus carota*) and Burnet-saxifrage (*Pimpinella saxifraga*).

Tortricidae

49.001 *Olindia schumacherana*

(Fabricius, 1787)

Local

All but two of the 23 records of this species have come from Hungerberry Copse in Shanklin. This year was no exception with four more records form that site. Two were trapped on 25 June and one on 30 June (IOu). Second generation specimens were trapped on 12 and 15 September (IOu).

49.005 *Epagoge grotiana*

(Fabricius, 1781)

Common

There has been a marked increase since 2011 and has been recorded annually. Fifteen were trapped at Parkhurst Forest on 28 June (IOu). There was one to actinic light at Brook Down quarry on 28 June and another from that site on 01 July (PB).

49.014 *Archips crataegana*

(Hübner, [1799])

Local

Two were recorded at Parkhurst Forest on 28 June (IOu) and singletons at Shanklin on 30 June and 04 July (IOu).

49.021 *Ptycholomoides aeriferana*

(Herrich-Schäffer, 1851)

Common

This species is scarce on the Island with only five previous records. A female was collected at Parkhurst Forest* on 28 June (IOu). The larvae feed on Larch (*Larix decidua*), living between needles spun with silk.

49.022 *Ptycholoma lecheana*

(Linnaeus, 1758)

Common

Records are predominantly from west Wight where one was trapped at Ningwood Common on 31 May (IOu).

49.041 Summer Fruit Tortrix (*Adoxophyes orana*)

(Fischer von Röslerstamm, 1834)

Nationally scarce (Nb)

This species was accidentally introduced to the UK and is now established although it remains scarce. One trapped at Bonchurch on 20 July was the first record for the Isle of Wight (JHa).

49.042 *Neosphaleroptera nubilana*

(Hübner, [1799])

Local

Ten were trapped at St. Catherine's Point on 23 June. Three of the specimens were retained and confirmed by dissection. This is the first IW record of this species since the 18th century (IOu).

49.047 *Eana incanana*

(Stephens, 1852)

Local

Recorded just twice before on the Isle of Wight; at Alverstoke in 1933 and at Borthwood Copse in 2016. A male trapped at Shanklin on 02 July was confirmed by dissection (IOu).

49.051 Flax Tortrix (*Cnephasia asseclana*)

([Denis & Schiffermüller], 1775)

Common

Various *Cnephasia* species can only be determined with certainty by dissection. A male and female were trapped at Shanklin 17 June were gen confirmed (IOu).

49.057 *Cnephasia longana*

(Haworth, 1811)

Common

Two were swept at Compton Down on 25 June (PB) and a male came to actinic light at Compton Down on 29 June, this specimen confirmed by dissection (PB).

49.058 *Spatalists bifasciana*

(Hübner, [1787])

Local

Once again the only record was from Parkhurst Forest where one was trapped on 28 June (IOu).

49.061 *Acleris holmiana*

(Linnaeus, 1758)

Common

This distinctive species is scarce on the Island but there were three records in 2019. Three were trapped at Bonchurch on 06 July with another at the same site on 11 July (JHa). Two came to actinic light at Rew Down on 07 July (PB).

49.075 *Acleris umbrana*

(Hübner, [1799])

Nationally scarce (Na)

It was another good year for this species with six records. Singletons were trapped in Shanklin on five dates between 06 January and 24 July (IOu). The other record was from Village Road, Bonchurch where a male came to actinic light on 12 July (PB). All were confirmed by dissection.

49.101 *Phalonidia manniana*

(Fischer von Röslerstamm, 1839)

Local

Two to actinic light at Afton Marsh on 25 June and four on 27 June (PB). One at Haseley Manor on 06 July (IOu).

49.123 *Aethes beatricella*

(Walsingham, 1898)

Local

Two were trapped at the regular site for this species at Wheelers Bay on 23 June (AB). Two were also trapped at Freshwater Cliffs* on 26 July (SD).

49.124 *Aethes francillana*

(Fabricius, 1794)

Local

One was swept at Alum Bay on 01 July (PB). Two were trapped at Bonchurch on 20 July with a third on 22 July (JHa). One was trapped at Wheelers Bay on 25 August (AB).

49.132 *Cochylidia implicitana*

(Wocke, 1856)

Local

A rare species on the Island with three previous records (1850, 1939 and 2015). A worn moth trapped in Shanklin on 24 August was retained, dissected and was found to be *implicitana* (IOu). The larvae feed on mayweeds and goldenrod.

49.137 *Cochylis dubitana*

(Hübner, [1799])

Common

Singletons were recorded at Bonchurch on 12 July, 22 July and 24 July (JHa).

49.150 *Apotomis betuletana*

(Haworth, 1811)

Common

There were three records this year starting with two at Parkhurst Forest on 28 June (IOu), one at Briddlesford Copse on 07 August (IOu) and finally one to actinic light at Kiln Place, Cranmore on 31 August (CH).

49.155 *Hedya salicella*

(Linnaeus, 1758)

Common

The only report was of one to actinic at Kiln Place, Cranmore on 07 July (CH). The larvae feed on willow, aspen and poplar species.

49.158 *Hedya ochroleucana*

(Frölich, 1828)

Common

Three males to actinic light at Mottistone Down on 01 July (PB) and two at Haseley Manor on 06 July (IOu). The larvae feed on Dog Rose (*Rosa canina*).

49.180 *Piniphila bifasciana*

(Haworth, 1811)

Local

Singletons were trapped at Freshwater Fruit Farm on 05 July (PB) and at Shanklin on 22 July and 18 August (IOu).

49.185 *Lobesia littoralis*

(Westwood & Humphreys, 1845)

Local

Ten were seen by day at Freshwater Cliffs on 17 June (SD) with ten trapped at the same site on 16 September and two more on 23 October (SD). The larvae feed on Thrift (*Armeria maritima*) and sometimes Common Bird's-foot Trefoil (*Lotus corniculatus*).

49.199 *Eucosmomorpha albersana*

(Hübner, [1813])

Local

This distinctive moth is scarce with just three previous records, all from the north of the Island. The larvae feed on Honeysuckle. One adult came to MV at Parkhurst Forest* on 20 May (IOu).



Eucosmomorpha albersana – Parkhurst

49.237 *Epinotia signatana*

(Douglas, 1845)

Local

This moth was first recorded on the Island in 2014 but has been seen regularly since then. There were four records this year with one at St. Catherine's Point* on 23 June (IOu) and singletons at Shanklin on 25 June, 30 June and 09 July (IOu).

49.280 *Gypsonoma oppressana*

(Treitschke, 1835)

Nationally scarce (Nb)

A male to actinic light at Afton Marsh on 27 June was confirmed by dissection (PB).

49.288 *Epiblema foenella*

(Linnaeus, 1758)

Common

The few records are from various locations across the Island. Six trapped at Haseley Manor on 06 July was the only record this year (IOu).

49.304 Pine Leaf-mining Moth (*Clavigesta purdeyi*)

(Durrant, 1911)

Local

A male trapped at Shanklin on 29 July was confirmed by dissection (IOu).

49.313 *Dichrorampha acuminatana*

(Lienig & Zeller, 1846)

Local

A male to actinic light at Afton Marsh on 27 June confirmed by dissection (PB).

49.332 *Cydia coniferana*

(Saxesen, 1840)

Nationally scarce (Nb)

First recorded in 2015 and three times since. A male at Shanklin on 20 July confirmed by dissection (IOu). The larvae feed within the bark of Scots Pine (*Pinus sylvestris*).

49.345 *Lathronympha strigana*

(Fabricius, 1775)

Common

This is a distinctive species that shouldn't pose any identification problems but it is also scarce on the Island so a worn specimen taken in Shanklin on 28 July was dissected for confirmation (IOu).

49.356 *Grapholita lobarzewskii*

(Nowicki, 1860)

Nationally scarce (Na)

It was a good year for this species with six records. Six were trapped at Shanklin over five nights from 23 June to 22 July (IOu). Elsewhere, a male came to actinic light at Freshwater Fruit Farm on 28 June (PB), the pheromone for this species having been placed by the light and the trap was in the vicinity of various fruit trees. The larvae of this species feed within the fruit of apple and plum.



49.357 Plum Fruit Moth (*Grapholita funebrana*)

Treitschke, 1835

Local

This species is scarce on the Island with recent records all from the Ventnor—Bonchurch area. Adults also require dissection for confirmation. Two males and a female were recorded at actinic light between 06 July and 11 July (PB) and a male to actinic light at Rew Down, Ventnor on 07 July (PB).

49.359 *Grapholita janthinana*

(Duponchel, 1835)

Common

One to actinic at Compton Down on 29 June (PB) and singletons to actinic at Dunnose, Bonchurch on 06 July and 08 July (PB).

49.363 *Pammene argyrana*

(Hübner, [1799])

Local

The only previous record of this species on the Isle of Wight is from Parkhurst Forest in 1978. Two males and a female came to LED lights at Briddlesford Copse* on 20 April and were retained. Slides 20190424-02/04 (IOU). The larvae feed within the bark of Oak trees forming galls.



Pammene argyrana – Briddlesford Copse

49.365 *Pammene albuginana*

(Guenée, 1845)

Local

There are two previous records from Brickfields and Walter's Copse, both in 2016. A male was trapped in Shanklin* on 14 June (IOU).

49.381 *Strophedra weirana*

(Douglas, 1850)

Local

Singletons were taken in Shanklin on 01 June and 20 July (IOU), a male at Parkhurst Forest on 28 June (IOU) and a male to actinic light at Brook Down quarry on 28 June (PB).

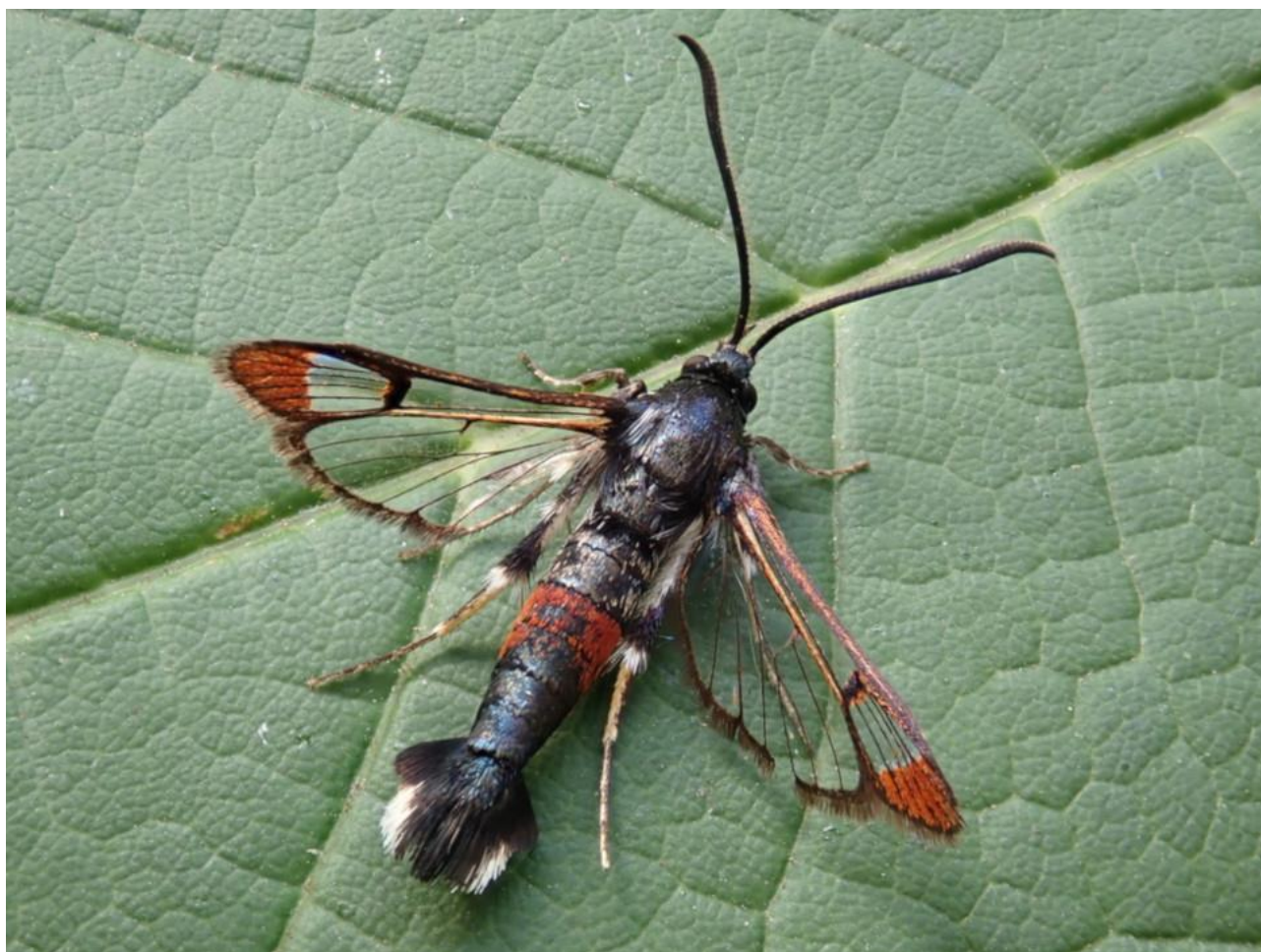
Sesiidae

52.008 Red-tipped Clearwing (*Synanthedon formicaeformis*)

(Esper, 1782)

Nationally scarce (Nb)

This day flying moth would be very difficult to locate without the use of pheromone lures but is probably more widespread than data suggest; in the right location the males often respond within minutes of a lure being deployed. The first record for the Isle of Wight was at Afton Marsh in 2015 where four responded to the FOR pheromone on 24 June (SD). Nineteen were attracted to pheromone at Sandown Water Works* on 27 June (PB) and three to the CUL pheromone at Alverstone on 27 June (PB). A further sixteen came to the lure at three spots on two species of narrow-leaved Willow (*Salix* sp.) at Alverstone, also on 27 June (PB). Two were attracted to the CUL pheromone at Afton Marsh on 28 June (PB). Finally, three came to the FOR lure at Haseley Manor on 04 July (IOu).



Red-tipped Clearwing (*Synanthedon formicaeformis*) – Alverstone © Phil Barden

Pyralidae

62.005 Lesser Wax Moth (*Achroia grisella*)

(Fabricius, 1794)

Local

After a surge in records in 2018 there was just one reported this year, a singleton to MV at Shanklin on 24 July (IOu). All of the Isle of Wight records are of adults to light traps rather than from beehives where the larvae feed on honeycomb wax, dead bees and other detritus.

62.025 *Dioryctria sylvestrella*

(Ratzeburg, 1840)

Nationally scarce (Nb)

There were two records from Shanklin with one trapped on 25 June and two at Shanklin Upper Chine on 22 July. In Bonchurch there was one on 10 July, two on 25 July and singletons on 07 August and 12 September (JHa).

62.030 *Hypochoalcia ahenella*

([Denis & Schiffermüller], 1775)

Nationally scarce (Nb)

There were four records this year, all of moths to actinic lights. The first at Freshwater Bay on 02 July with two at the same site on 04 July (PB). Three were recorded from two sites at Rew Down, Ventnor on 07 July (PB). With recent records confined to the chalk downs of west Wight it was good to see two reports from Rew Down where there is an old record from 1981.

62.033 *Acrobasis tumidana*

([Denis & Schiffermüller], 1775)

Immigrant

It was a good year for this migrant moth. At Bonchurch there was a record count of seven on 25 July and singletons on 08 and 15 August (JHa). Elsewhere there was one at Upper Chine, Shanklin on 28 July (IOu).



Acrobasis tumidana – Bonchurch © James Halsey

62.059 *Phycitodes saxicola*

(Vaughan, 1870)

Local

A female to actinic light at Dunnose, Bonchurch on 06 July was the only record (PB).

62.074 Large Tabby (*Aglossa pingualis*)

(Linnaeus, 1758)

Local

One by day at Plaish on 17 July (Kevin Rylands).

Crambidae

63.001 *Paracorsia repandalis*

([Denis & Schiffermüller], 1775)

Immigrant

There are just nine previous British records of this very scarce migrant from southern Europe. One at Moons Hill, Totland* on 25 July was the first for the Isle of Wight (SAK-J).

63.002 *Loxostege sticticalis*

(Linnaeus, 1761)

Immigrant

A scarce migrant from southern Europe. There was one trapped at Bonchurch on 26 August (JHa) and two at Moons Hill, Totland on 29 August (SAK-J).

63.013 *Nascia ciliaris*

(Hübner, 1796)

Nationally scarce (Nb)

Records of this species are confined to west Wight, particularly around Afton Marsh. This year was no exception with one to MV at Freshwater Cliffs on 24 June (SD).

63.041 *Agrotera nemoralis*

(Scopoli, 1763)

pRDB1/Immigrant

An increase in the number of records since the first in 2015 indicates probable colonisation of the southeast of the Island by this species and was reinforced with a further three records this year. Singletons were taken at Bonchurch on 18 June (JHa) and at Shanklin on 20 and 25 June (IOu).

63.047 *Spoladea recurvalis*

(Fabricius, 1775)

Rare immigrant

This rare immigrant from Europe turns up occasionally at regular trapping sites. There are five previous IW records and one was taken at MV in Shanklin on 31 October (IOu).



Spoladea recurvalis – Shanklin

63.054 Box-tree Moth (*Cydalima perspectalis*)

(Walker, 1859)

Adventive/Invasive

It will come as no surprise that it took just five years from the first vice-county record to reach the point where it exceeds the criteria for inclusion in this report. A further 32 records were received in 2019. This moth is here to stay.

63.055 Grass Webworm (*Herpetogramma licarsisalis*)

(Walker, 1859)

Very rare immigrant

This rare migrant was first recorded in the UK in 1998 and there were sixteen records up to 2018. This year saw a significant arrival, predominantly in Cornwall but with one in Dorset and another here on the Isle of Wight. Representing the third record for the county, a male was trapped at Brook on 05 October. The specimen was retained and confirmed by dissection (Diana Westerhoff & Richard Jones).



63.071 *Eudonia lineola*

(Curtis, 1827)

Nationally scarce (Nb)

There are just two accepted IW records of this moth, the last in 1993. There were several records this year with one to MV at Freshwater Cliffs on 06 June and two on 02 July (SD). A male to actinic light at Freshwater Bay on 04 July was confirmed by dissection (PB) as was a male at Freshwater Cliffs on 18 July (SD/IOu).

63.076 *Euchromius ocella*

(Haworth, 1811)

Rare immigrant

A rare migrant moth with occasional records at regular trapping sites. One came to MV at Moons Hill, Totland on 16 February (SAK-J).

63.079 *Calamotropha paludella*

(Hübner, [1824])

Local

There were four records during the year with one from a new hectad; fourteen to LED lights at Hersey Reserve* on 23 July (IOu).

63.103 *Catoptria verellus*

(Zincken, 1817)

Rare immigrant

Recorded annually since 2015 and there were four more this year. Singletons were trapped at Shanklin on 30 June, 13 and 22 July (IOu) and one at Bonchurch on 02 July (JHa).

63.109 *Pediasia contaminella*

(Hübner, 1796)

Nationally scarce (Nb)

There were just ten records of this species between 1909 and 2018 so six this year was extraordinary. The first came to actinic light at Dunnose, Bonchurch on 06 July (PB). A male at Shanklin on 20 July was confirmed by dissection and followed by two on 22 July and one on 28 July (IOu). Another was taken at Upper Chine, Shanklin on 28 July (IOu) and the final specimen at Brook on 04 October which was also confirmed by dissection (Diana Westerhoff & Richard Jones).

63.113 *Ancylolomia tentaculella*

(Hübner, 1796)

Very rare immigrant

Up to 2018 there were just six UK records but this year saw an unprecedented influx with at least fifteen taken in south coast counties. Most were in Kent but one was recorded on the Isle of Wight, the first for the county, which was trapped at Shanklin* on 31 July (IOu).



Ancylolomia tentaculella – Shanklin

63.121 *Donacaula forficella*

(Thunberg, 1794)

Local

One to actinic light at Village Road, Bonchurch on 09 July (PB) and a female was trapped at Shanklin on 31 July (IOu).

Sphingidae

69.005 Death's-head Hawk-moth (*Acherontia atropos*)

(Linnaeus, 1758)

Immigrant

Continuing the run of recent years a larva was found at the Osborne Road Allotments, Ryde on 12 August (Meryl Cass). It was provided with a pot of compost it quickly buried itself to pupate. The pupa was collected 13 September and emerged as an adult on 25 September (JHa/IOu).

Two other larvae were found. One identified from a photograph taken in Freshwater on 27 September (Angel Davis) and another was found in a garden in Rookley on 03 October (Chrissie Shepherd).

Geometridae

70.020 Sub-angled Wave (*Scopula nigropunctata*)

(Hufnagel, 1767)

RDB2/Immigrant

This is a scarce migrant on the Isle of Wight where there are just two previous records. One came to actinic light at Dunnose, Bonchurch* on 08 July (PB).



Sub-angled Wave (*Scopula nigropunctata*) – Bonchurch © Phil Barden

70.068 Beautiful Carpet (*Mesoleuca albicillata*)

(Linnaeus, 1758)

Common

Widespread but scarce this species can be found in deciduous woodland, particularly where there is good bramble cover. One came to actinic light at Mottistone Down on 01 July (PB).

70.108 Pale November Moth (*Epirrita christyi*)

(Allen, 1906)

Common

A common species but with few records owing to the difficulties in identification. Specimens at Shanklin on 21 and 23 October were examined and confirmed (IOu).

70.109 Autumnal Moth (*Epirrita autumnata*)

(Borkhausen, 1794)

Common

As with the previous species this is under-recorded owing to the difficulties separating *Epirrita* species. A female at Shanklin on 23 October was confirmed by dissection (IOu).

70.129 Dentated Pug (*Anticollix sparsata*)

(Treitschke, 1828)

Nationally scarce (Na)

This is scarce on the Isle of Wight with all recent records coming from Afton Marsh and Freshwater. Singletons were recorded to actinic light at Afton Marsh on 25 and 27 June (PB).

70.189 Shaded Pug (*Eupithecia subumbrata*)

([Denis & Schiffermüller], 1775)

Local

There were four records this year, each of a single moth to actinic light. A male was trapped at Mottistone Down and a female at Brook Down quarry, both on 01 July (PB), then a female at Freshwater Fruit Farm on 02 July (PB) and a male at Freshwater Bay on 04 July (PB).

70.201 Barred Tooth-striped (*Trichopteryx polycommata*)

([Denis & Schiffermüller], 1775)

Nationally scarce (Na)

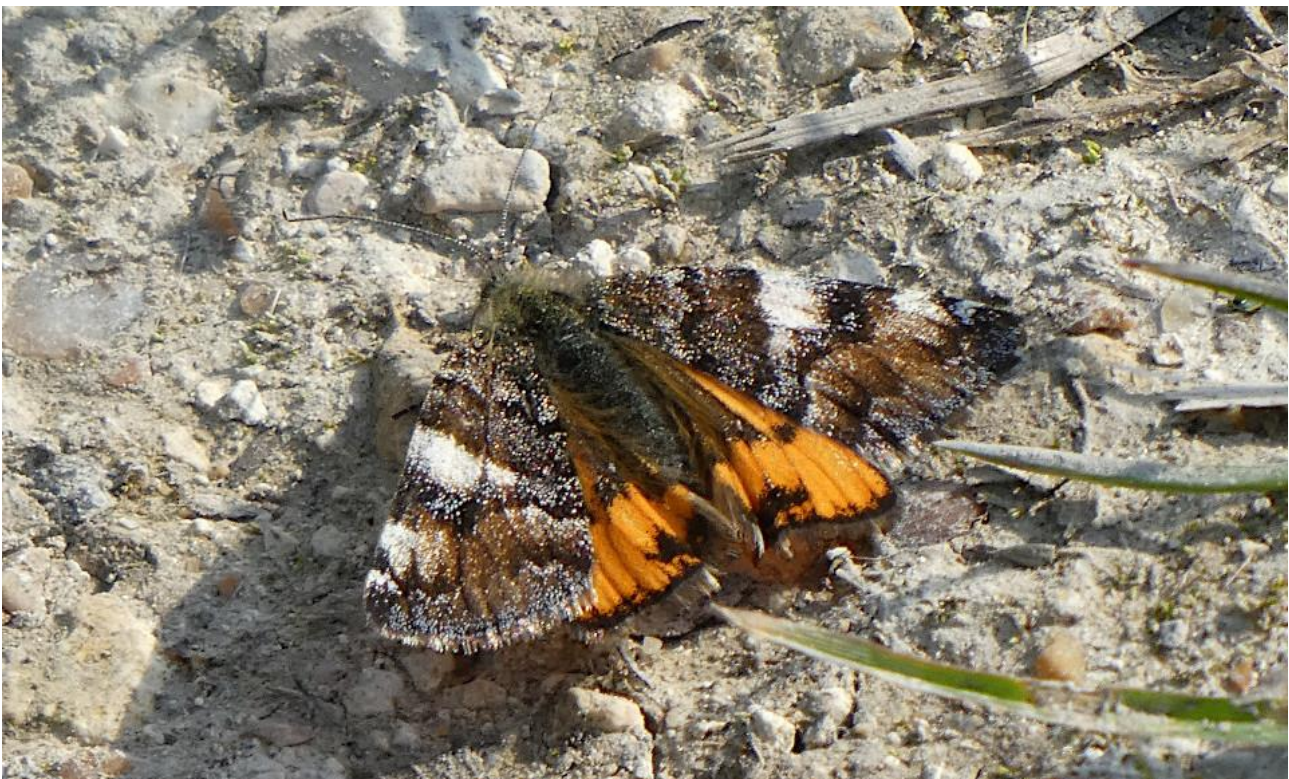
Recently recorded from two sites on the Island but remains very scarce. One was found during a torchlight search at Rocken End on 19 March (IOu).

70.203 Orange Underwing (*Archiearis parthenias*)

(Linnaeus, 1761)

Local

One was photographed on the Tennyson Trail between Strawberry Lane and the reservoir on 01 April (CH).



Orange Underwing (*Archiearis parthenias*) – Tennyson Trail © Chris Hicks

70.223 Barred Umber (*Plagodis pulveraria*)

(Linnaeus, 1758)

Local

Largely confined to ancient/mature woodland and recorded on a less than annual basis but there were four reports in 2019. Two at Briddlesford Copse on 20 April with one to LED light and one by torchlight (IOu), another at Briddlesford Copse on 15 May (IOu) and one at Parkhurst Forest on 20 May (IOu). Finally, four to actinic at Cranmore Avenue, Yarmouth on 21 June (Nick Poulter).

Erebidae

72.0252/3 Satin/Banana Stowaway *Antichloris* sp.

Accidental import

A cocoon found on bananas provided to school children in Cowes appeared to be that of an *Antichloris* species. The cocoon was collected and bred through but had been parasitised by a wasp, *Brachymeria incerta*.

72.047 Hoary Footman (*Eilema caniola*)

(Hübner, [1808])

Nationally scarce (Nb)

Just two records this year with singletons at Shanklin on 28 July (IOu) and Cliff Cottage, Wheelers Bay on 03 August (AB).

72.057 Plumed Fan-foot (*Pechipogo plumigeralis*)

(Hübner, [1825])

Rare immigrant

This is a rare migrant from mainland Europe which has appeared almost annually since the first IW record in 2013. Up to 2018 there had been ten vice-county records, all from the Ventnor-Bonchurch area. Three more were reported this year with one at Bonchurch on 21 July (JHa) and singletons at Cliff Cottage, Wheelers Bay on 25 and 29 July (AB).

72.073 Small Marbled (*Eublemma parva*)

(Hübner, [1808])

Immigrant

An immigrant species that occasionally arrives in significant numbers. None were reported in 2018 but there were four this year. One to actinic light at Freshwater Bay on 02 July (PB), two to actinic light at Dunnose, Bonchurch on 06 July (PB) and another at Bonchurch on 11 July (PB). The last was at Moons Hill, Totland on 11 September (SAK-J).

Noctuidae

73.010 Dewick's Plusia (*Macdunnoughia confusa*)

(Stephens, 1850)

Rare immigrant

A rare but increasingly recorded migrant moth there were singletons at Bonchurch on 19 May and 29 September (JHa). A female trapped at Brook on 06 October died overnight after laying eggs. Eggs hatched on 14 October, larvae feeding on nettles (Diana Westerhoff & Richard Jones).

73.028 Pale Shoulder (*Acontia lucida*)

(Hufnagel, 1766)

Rare immigrant

A rare immigrant from mainland Europe there have been 31 British records since 1994. The first for the Island was photographed at Wheeler's Bay in 2013. In 2019 one was trapped at Moons Hill, Totland* on 27 July (SAK-J).

73.0301 Druid (*Aedia funesta*)

(Esper, 1786)

Immigrant

The native range of this species is from central and southern Europe through to Iran. The first British record was in 2014 and the first for the Isle of Wight in 2016. There have now been fifteen British records including this one trapped at Bonchurch on 01 July which was the fourth for the Island (JHa).

73.031 Four-spotted (*Tyta luctuosa*)

[[Denis & Schiffermüller], 1775)

Nationally scarce (Na)/Immigrant

A few colonies remain on the mainland but records of this species on the Isle of Wight refer to migrants. Even as a migrant it is scarce and has been seen just three times since 1900. One trapped in Carisbrooke* on 27 July was a welcome find (Dave Wooldridge).



Four-spotted – Carisbrooke © Dave Wooldridge



Druid – Bonchurch © James Halsey

73.037 Dark Dagger (*Acronicta tridens*)

[[Denis & Schiffermüller], 1775)

Common

Usually recorded as an aggregate owing to difficulty in separating this and Grey Dagger. A male to actinic light at Dunnose, Bonchurch on 06 July was confirmed by dissection (PB).

73.053 Chamomile Shark (*Cucullia chamomillae*)

[[Denis & Schiffermüller], 1775)

Local



Records are scattered from across the county but with only three this century. The larvae feed on the flowers of Scentless Mayweed, Corn Chamomile, Stinking Chamomile and Feverfew, a larva was photographed at the Garlic Farm on 02 July (Debbie Hart).

Chamomile Shark – IW Garlic Farm © Debbie Hart

73.091 Rosy Marbled (*Elaphria venustula*)

(Hübner, 1790)

Nationally scarce (Nb)

Largely confined to southeast England as far west as Dorset but nowhere common and rare on the Isle of Wight. A few more records in recent years probably reflecting increased observer effort rather than any local change in its status. There was one record in 2019, a singleton at Bonchurch on 02 June (JHa).

73.100 Silky Wainscot (*Chilodes maritima*)

(Tauscher, 1806)

Local

Widespread though infrequently at light and occurring wherever there is suitable habitat where the larvae feed on Common Reed (*Phragmites australis*). There was only one record this year but from a new hectad; two to LED light at Hersey Reserve* on 05 June (IOu).

73.106 Orache Moth (*Trachea atriplicis*)

(Linnaeus, 1758)

Rare immigrant

This species is a rare migrant from mainland Europe. There were seventeen vice-county records between 1996 and 2017. This year a female was trapped at Shanklin on 19 June (IOu).



Orache Moth (*Trachea atriplicis*) – Shanklin

73.136 Bulrush Wainscot (*Nonagria typhae*)

(Thunberg, 1784)

Common

There are just nine records this century although it probably occurs wherever the larval food plant, Common Bulrush, is found. One was trapped at Bonchurch on 11 August (JHa).

73.179 Orange Sallow (*Tiliacea citrigo*)

(Linnaeus, 1758)

Common

Although this species is infrequently recorded at light traps there were four records in 2019 with singletons at Shanklin on 02 September (IOu), Bonchurch on 08 September (JHa), Freshwater Cliffs on 16 September (SD) and another at Shanklin on 17 September (IOu).

73.198 Red-headed Chestnut (*Conistra erythrocephala*)

([Denis & Schiffermüller], 1775)

Rare immigrant

There are seven previous records of this rare immigrant. One came to MV at Bonchurch on 27 February (JHa).

73.208 Sword-grass (*Xylena exsoleta*)

(Linnaeus, 1758)

Nationally scarce (Nb)

This is rare on the Isle of Wight where records are presumed to be migrants. The first to be seen since one was trapped in Freshwater in 1978 was a single at Bonchurch on 15 February (JHa).

73.221 Suspected (*Parastichtis suspecta*)

(Hübner, [1817])

Local

Predominantly found in birch-rich habitat but the larvae will also feed on *Salix* sp. Occurrence on the Island is probably of vagrants. The sixth for the county was trapped at Moons Hill, Totland on 25 June (SAK-J).

73.268 Splendid Brocade (*Lacanobia splendens*)

(Hübner, [1808])

Immigrant

Since the first UK record in 2003 this has become more common and there are were sixteen IW records up to 2018. Another was trapped this year with one at Bonchurch on 22 July (JHa).

73.284 White Spot (*Hadena albimacula*)

(Borkhausen, 1792)

RDB2

This red data book species occurs on shingle beaches and chalk or limestone sea-cliffs on the south coast of England where the larvae feed on the seeds Nottingham Catchfly (*Silene nutans*). The food plant is restricted to two sites on the Island and searches in those areas found no sign of the moth which is likely to be a migrant here. The only previous record is from Chale Green in 1993⁵, so one to actinic light at Kiln Place, Cranmore on 17 August (CH) was very welcome.



White Spot (*Hadena albimacula*) – Cranmore

73.296 White-speck (*Mythimna unipuncta*)

(Haworth, 1809)

Immigrant

Singletons at Bonchurch on 23 February (JHa) and at Moons Hill, Totland on 29 July and 28 October (SAK-J).

73.323 Sand Dart (*Agrotis ripae*)

(Hübner, [1823])

Nationally scarce (Nb)

Probably still common at St. Helen's Duver but not recorded there since 1980. All recent records are from west Wight. One at Freshwater Cliffs on 24 June (SD).

73.330 Radford's Flame Shoulder (*Ochropleura leucogaster*)

(Freyer, [1831])

Rare immigrant

Four were recorded over three nights between 30 September and 08 October at Brook (Diana Westerhoff & Richard Jones).

73.355 Neglected Rustic (*Xestia castanea*)

(Esper, 1798)

Local

On the Isle of Wight this species is only known from historical records, the most recent of which are from a set dated 1930-1964 (J. Lobb). An individual of the grey form f. *neglecta* was trapped at Kiln Place, Cranmore on 30 August (CH).



Neglected Rustic (*Xestia castanea*) – Cranmore

73.356 Heath Rustic (*Xestia agathina*)

(Duponchel, 1827)

Local

Associated with heathland but occasionally recorded away from that habitat. There were two records in 2019 with singletons at Moons Hill, Totland on 14 and 18 September (SAK-J).

74.001 Small Black Arches (*Meganola strigula*)

([Denis & Schiffermüller], 1775)

Nationally scarce (Na)

A scarce species of oak woodland there has been just one other record this century. Two were trapped at Parkhurst Forest on 28 June (IOu).

Addendum

A new species for the UK⁶

On 06 October 2017 an female geometrid was trapped at MV light in Bonchurch (Mike Halsey). The moth was unfamiliar so was retained for identification. Genitalia dissection found no match in British or European species so DNA analysis was undertaken. That revealed the moth to be a North American moth, the Common Tan Wave (*Pleuroprucha insulsaria*). This is first record of this species in the Britain. It is unclear how the moth reached Bonchurch but ship assisted seems likely.

Migrant summary

	Jan	Feb	Mar	Apr	May	Jun	Jul	Aug	Sep	Oct	Nov	Dec	Totals
Dark Sword-grass (<i>Agrotis ipsilon</i>)		3	6			3	7	17	1	1			38
Gem (<i>Nycterosea obstipata</i>)				1									1
Silver Y (<i>Autographa gamma</i>)		1	4	3	18	35	55	120	37	36	1		310
Diamond-back Moth (<i>Plutella xylostella</i>)				1	20	111	154	563	31	38	2		920
Humming-bird Hawkmoth (<i>Macroglossum stellatarum</i>)*			1			7	12	32	15	8			75
Delicate (<i>Mythimna vitellina</i>)						7	18	1	31	56	2		115
White-point (<i>Mythimna albipuncta</i>)				4	19	42	5	115	63	31			279
Rusty-dot Pearl (<i>Udea ferrugalis</i>)				10	8	44	84	152	107	108	47		560
Rush Veneer (<i>Nomophila noctuella</i>)		1				7	19	27	34	13			101
<i>Acrobasis tumidana</i>							8	2					10
<i>Cydia amplana</i>							1	11	1				13
Vestal (<i>Rhodometra sacraria</i>)							1	2	1	1			5
<i>Palpita vitrealis</i>								6	5	7			18
Clifden Nonpareil (<i>Catocala fraxini</i>)								1	6	1			8
Clancy's Rustic (<i>Caradrina kadenii</i>)					2	24	33		118	56			233
Convolvulus Hawkmoth (<i>Agrius convolvuli</i>)								1	11	3			15
Radford's Flame Shoulder (<i>Ochropleura leucogaster</i>)									1	3			4
Scarce Bordered Straw (<i>Helicoverpa armigera</i>)								2	7	10			19
Dewick's Plusia (<i>Macdunnoughia confusa</i>)					1				1	1			3
Pearly Underwing (<i>Peridroma saucia</i>)						1	1		10	6	1		19
White-speck (<i>Mythimna unipuncta</i>)		1					1			1			3
Jersey Mocha (<i>Cyclophora ruficiliaria</i>)					2			1	1				4
Bordered Straw (<i>Heliothis peltigera</i>)						1	1						2
Small Mottled Willow (<i>Spodoptera exigua</i>)						1	2						3
Totals	0	6	11	19	70	286	402	1053	481	380	53	0	2761

* Includes daytime records

References

- 1 **UK Met Office.**, Monthly, seasonal and annual summaries 2019.
uk_monthly_climate_summary_autumn_2019.pdf
- 2 **Agassiz, D.J.L., Beavan, S.D. and Heckford, R.J.**, 2013. A Checklist of the Lepidoptera of the British Isles, Royal Entomological Society, London. ISBN 9780901546968
- 3 **Agassiz, D.J.L., Beavan, S.D. and Heckford, R.J.**, 2016. Corrigenda to A Checklist of the Lepidoptera of the British Isles. Entomologist's Rec. J. Var. 128: 50–55
- 4 **Agassiz, D.J.L., Beavan, S.D. and Heckford, R.J.**, 2019. Second Update to the Checklist of the Lepidoptera of the British Isles. Entomologist's Rec. J. Var. 131: 1–7
- 5 **Knill-Jones, S.A.**, 1994. Three species of lepidoptera new to the Isle of Wight. Entomologist's Rec. J. Var. 106: 77
- 6 **Halsey, M. and Hausmann, A.**, 2019. *Pleuroprucha insulsaria* (Guenée, 1858) (Lep.: Geometridae, Sterrhinae) The Common Tan Wave: A first UK record of this North American species. Entomologist's Rec. J. Var. 131: 271–274

List of observers

Kerry Ashmore	James Goode	Iain Outlaw (IOu)
Phil Barden (PB)	Derek Hale	Mark Outlaw
David Biggs	James Halsey (JHa)	Nick Poulter
Alan Brown	Bernard Hamet	Kevin Rylands
Emma Brown	Debbie Hart	Kay Shaw
Andy Butler (AB)	Chris Hicks (CH)	Chrissie Shepherd
Meryl Cass	Richard E Jones	Sue Sibley
Clive Cooper	Sam Knill-Jones (SAK-J)	Tony Steele
Dave Dana	Nicola Kownacki	Andy Trout
Sue Davies	John Maskell	Diana Westerhoff
Angel Davis	Jo Morris	Tina Whitmore
Luke Ellison	Scott Newman	Vidya Wolton
Dale Evans	Anthony Outlaw	Dave Wooldridge

Acknowledgements

My thanks go to the many recorders who contributed data in 2019 and also to the Forestry Commission, National Trust, People's Trust for Endangered Species and Royal Society for the Protection of Birds for providing permits and allowing access to their estates and to Natural England and IWNHAS for their support.

After six years I have decided to step down as County Moth Recorder so this will be my final report. I would like to thank Mike Wall and Tim Norriss for all the help and support they provided, I couldn't have done it without you, and thanks to the many friends I've made along the way.

I like to think it has been a productive time. Increased focus on micro-moths has paid dividends with many species absent from the record for many years found still to be present and a number of previously un-recorded species seen for the first time. During the past six years a total of 1268 species of moth have been recorded on the Island, of those 69 were new to the county fauna. Although almost half of the new species have been recorded only once, four have already passed 20 records. One species, *Agrotera nemoralis*, is almost certainly colonising the southeast of the Island. Proving it is the next step.

This incredibly diverse group of insects provides us with endless scope for discovery. Moths are fascinating in their own right but so is monitoring how their populations respond to environmental and climate changes. I urge everyone with an interest in natural history to give moths a closer look.

Finally, my best wishes to Jim Baldwin who has taken on the recorder role. I'm sure you'll enjoy it Jim.

Iain Outlaw
zoothera@live.co.uk

Isle of Wight Natural History and Archaeological Society
Unit 16, Prospect Business Centre, Prospect Road, West Cowes, PO31 7AD
iwnhas@iwnhas.org
<http://iwnhas.org/>