



Extraction and Phytochemical Analysis of *Anthemis susiana* Nábělek Using Headspace-solid Phase (HS-SPME) and Gas Chromatography–mass Spectrometry (GC-MS)

Marzieh Hadavi¹, Ali Eidy², Reza Assadzadeh³, Naser Abbasi² and Mahmoud Bahmani^{2*}

¹Department of Internal Medicine, School of Medicine, Ilam University of Medical Sciences, Ilam, Iran

²Biotechnology and Medicinal Plants Research Center, Ilam University of Medical Sciences, Ilam, Iran

³Department of Nephrology, School of Medicine, Ilam University of Medical Sciences, Ilam, Iran

Article History: Received: 02 December 2019/Accepted in revised form: 27 October 2020

© 2012 Iranian Society of Medicinal Plants. All rights reserved.

Abstract

Chamomile has several variants, such as *Anthemis Susiana* Nábělek, *Matricaria chamomilla* L., *Chamomilla recutita* (L.) Rauschert, *Matricaria suaveolens* Koch and etc. Medicinal herbs, extracts and essential oils are of particular importance in the pharmaceutical, cosmetic and food industries. The phytoanalysis of these compounds is of particular importance. In April 2019, *Anthemis Susiana* Nábělek samples were collected from the Thermal Springs area of Dehloran, south of Ilam province, western Iran. The plant was dried and then pulverized. The essential oil was extracted from the plant using HS-SPME and analyzed using GC-MS. GC-MS results showed that *Anthemis susiana* Nábělek contains 63 chemical compounds. The main chemical compounds included alpha-bisabolol oxide A (19.07%), alpha-pinene (15.50%), beta-bisabolene (12.56%), spathulenol (9.23%), beta-farnesen (8.95%), alpha-bisabolol (4.72%), caryophyllene oxide (4.46%), trans-farnesol (3.75%), and dl-limonene (3.47%).

Keywords: Alpha-bisabolol oxide A, Alpha-pinene, Chamomile, Essential Oils, GC-MS, Microextraction

Introduction

Chamomile is a generic name used for different variants of the Asteraceae family. Asteraceae which commonly referred to as the aster, daisy, composite, or sunflower family, is a very large and widespread family of flowering plants. This family has several species, including *Anthemis Susiana* Nábělek, *Matricaria chamomilla*, *Chamomilla recutita*, *Matricaria suaveolens* and etc. In traditional medicine, chamomile is used as an analgesic, anti-inflammatory, sedative, antispasmodic, digestive, anti-gastrointestinal spasm [1,2], stomach boosting [1-3], appetizing, anti-flatulence, carminative, antimicrobial [2-4], anti-gout and anti-anxiety agent [4-6] and also to beautify and refresh the skin [3, 4], treat liver and spleen swelling [7,8], anxiety diarrhea, and migraines, boost stomach, and prevent gastric ulcer [9, 10]. Shushi chamomile is scientifically called *Anthemis Susiana* Nábělek. This one-year-old herbaceous plant has a stem 5 to 15 cm high, is ascending, branching, and

sometimes branchless, slightly thick. The plant leaves have a rectangular-elliptic shape of 15 to 25 mm long and 5 to 10 mm wide with partly linear and pointed sections. Inflorescence tail is 1.5–5 mm long and slightly thick. All its flowers are fertile, tub flowers and white flowers are 8–10 mm long, and tuberoses flowers are yellow [11]. Chamomile species is a medicinal plant that is often referred to as the star of medicinal species. Studies have shown that medicinal plants have beneficial health effects for humans due to their active ingredients and medicinal and antioxidant compounds [12-15]. The essential oils of *Anthemis Susiana* Nábělek are a mixture of more than 120 different compounds. These compounds are mainly composed of monoterpene, sesquiterpene and oxygenated derivatives such as alcohols, esters, aldehydes and aliphatic ketones. The beneficial pharmacological, cosmetic, health and nutritional effects of the plant have been proven through genuine traditional medicine and its traditional and pharmacologically modern applications. Chamomile has a domestic and international consumer

*Corresponding author: Biotechnology and Medical Plants Research Center, Ilam University of Medical Sciences, Ilam, Iran
Email Address: mahmood.bahmani@gmail.com

market that is increasing on a daily basis. In order to identify the most effective compounds in the essential oil of this plant, which the compounds has a great use in traditional Iranian medicine. The chemical constituents of essential oils of chamomile species have been studied but no chemical constituents of chamomile have been reported so far. From a historical point of view, in traditional medicine and herbal medicine, plants are very important and extensive research has been done to find herbal products and medicines since ancient times, but the important point is that a small percentage of plant species as a source Medicinal compounds have been used. Since chamomile has long been used and used medicinally, chamomile is also a species that has not been studied, so the study of its chemical composition is of particular importance. In this phytochemical study, the chemical constituents of essential oils of chamomile were investigated and analyzed for the first time by Headspace-solid phase microextraction and Gas chromatography–mass spectrometry.

Material and Methods

Plant Preparation

In April 2019, *Anthemis Susiana* Náběleksamples were collected from the thermal springs area of Dehloran, south of Ilam province, western Iran. The sample was taken from an altitude of about 300 meters above sea level. Figure of chamomile collection area in Dehloran city. Dehloran Waterfall Area is 213 meters above sea level. The plant was identified and confirmed using morphological keys of Ilam Province Plant Flora Book at Ilam University of Medical Sciences Biotechnology and Medicinal Research Center. The collected plants were cleaned and shadow-dried in the open air. The dried plant was pulverized by a plant mixer and analyzed by HS-SPME for chemical composition analysis. The characteristics of the medicinal plant *Anthemis Susiana* Nábělek used in this study are shown in Table 1.

Identification of Chemical Compounds by HS-SPME

In this experiment, the essential oil of the plant was extracted by HS-SPME technique. In this technique, about 2 grams of dried plant and its powder were placed in the vial and the vial temperature was set at 60-70 °C. These optimum temperature conditions will saturate the vapor content of the substances in the plant essential oil

in the headspace of the solid surface. The SPME syringe with a lid on it was then placed in the headspace of the container and the material in the vapor was absorbed by the silica phase in the instrument needle. After the silica fiber was allowed to sufficiently saturate with volatile components, the fiber was directly placed into the GC/MS input section and materials present in the fiber were absorbed due to the temperature of the input and then entered into the GC/MS apparatus for identification [16].



Fig. 1 Chamomile collection area in Dehloran city

HS-SPME Method

2 g of each plant extract was used for analysis. The device condition was as follows: Gas chromatograph (Agilent6890N) was coupled to Agilent 5973 Mass detector; Column: HP - 5. (30 m length × 0.25 mm (ID) × 0.25 μm (stationary phase thickness); Injector type: split/splitless and column temperature program: 50 °C, temperature 200 °C, hold time, 0.00 min and rate of 50°C/min and temperature 240 °C, hold time 0.00 min and rate of 10 °C/min. Carrier gas: He (99.999%); Injection type: splitless; Library: Wiley 7n; Injector temperature: 250 °C and flow rate: 0.9 mL/min. Extraction mode: (HS-SPME); SMPE fiber: PDMS 100 μm thickness (SUPELCO); sample weight: 2 g; extraction temperature: 60 °C; extraction time: 20 min; sonication time: 10 min (Euronda sonication instrument, Italy) and desorption time in GC-MS injector port: 3 min [17].

Table 1 Specifications of *Anthemis Susiana* Nábělek

Plant	Scientific name	Herbal family	Location	Geographical coordinates
Shushi chamomile	<i>Anthemis susiana</i> Nabelek	Asteraceae	Dehloran	32° 41' 28" North, 47° 15' 58" East

Table 2 Identified compounds of essential oils by HS-SPME (GC-MS)

No.	RI	Compound	%
1	5.16	α -Pinene	2.92
2	5.43	Camphene	0.00
3	5.91	β -Pinene	0.19
4	6.10	β -Myrcene	0.07
5	6.23	p-Cymene	0.18
6	6.39	α -Phellandrene	0.16
7	6.48	δ -3-Carene	0.02
8	6.60	α -Terpinene	0.01
9	6.82	dl-Limonene	3.47
10	7.36	β -Phellandrene	0.01
11	9.51	endo-Borneol	0.04
12	9.69	4-Terpineol	0.07
13	9.90	Adamantane, 1-methyl-	0.23
14	10.05	Myrtenal	0.12
15	10.31	Terpinene-3-ol	0.07
16	10.57	Trans-Carveol	0.07
17	11.92	Nerol	0.26
18	12.05	benzyl nonanoate	0.19
19	12.74	Carvone	1.09
20	14.21	Mesitylaldehyde	0.64
21	14.28	Benzaldehyde, 2,4,6-trimethyl-	0.58
22	14.34	Mesitaldehyde	0.44
23	14.47	β -Bourbonene	0.45
24	14.62	Tetradecane	0.49
25	14.80	β -Ethyl-naphthalene	0.11
26	15.41	trans-Caryophyllene	0.78
27	15.81	β -Farnesene	8.95
28	15.97	Aromadendrene	0.72
29	16.26	α -Bergamotene	1.27
30	16.50	α -Amorphene	0.37
31	17.10	α -Curcumen	0.20
32	17.34	Epi-ligulyl oxide	1.05
33	17.62	δ -Selinene	0.28
34	17.81	β -Bisabolene	12.56
35	18.30	δ -Cadinene	0.34
36	18.53	Spathulenol	9.23
37	18.91	o-Cymene	2.39
38	19.61	Longifolenaldehyde	0.23
39	20.16	Caryophyllene oxide	4.46
40	20.47	N-Acetyltyramine	0.98
41	20.89	Santalol	1.12
42	21.03	Bisabolene epoxide	0.75
43	21.67	Valerenol	0.24
44	22.00	Ledene	0.26
45	22.28	Aromadendrene oxide	1.13
46	22.56	γ -Gurjunene	0.43
47	22.81	β -Selinene	0.73
48	23.29	α -Farnesene	1.81
49	23.71	(+)- β -Atlantone	0.78
50	23.88	α -Bisabolol oxide B	2.76
51	24.59	α -Bisabolol oxide A	0.85
52	25.13	Trans-Farnesol	3.75
53	25.31	Bergamotol	0.38
54	25.65	Tetradecanoic acid	1.44
55	26.13	α -Bisabolol	4.72
56	26.45	Sinularene	0.33
57	27.62	α -Bisabolol oxide A,	19.07

58	28.28	Isoaromadendrene epoxide	1.12
59	28.95	Nonadecane	0.44
60	30.86	Oplophenone	0.16
61	31.66	Eicosane	0.15
62	33.83	Phytol	0.11
63	34.06	Heptacosane	1.77

RI: Retention time

Fig. 2 illustrates the recorded chromatogram of the *Anthemis susiana* Nábělek essential oil composition. This plant has 63 peaks that belong to 63 different chemical compounds of the plant (Fig. 1).

Results

In this study, HS-SPME method was used to extract *A. susiana* essential oil and the essential oil analyzed by GC-MS method. According to the results of the GC-MS method shown in Table 1, essential oils obtained from *A. susiana* essence contain a total of 63 chemical compounds. The results of phytochemical analysis of essential oil of this plant showed that its major chemical constituents included alpha-bisabolol oxide A (19.07%), alpha-pinene (15.50%), beta-bisabolene (12.56%), spathulenol (9.23%), beta-farnesene (8.95%), Alpha-Bisabolol (4.72%), caryophyllene oxide (4.46%), trans-farnesol (3.75%) and dl-Limonene (3.47%). Other compounds of the essential oils of *A. susiana* essential oil are listed in Table 1.

Discussion

So far no study has been done on the chemical composition of *Anthemis Susiana* Nábělek. This study reports for the first time the chemical constituents of *A. susiana* essential oil. According to the results, the major compound of essential oil of this plant is alpha-bisabolol oxide A (19.7%). The study of Jaymand (2001) showed that the main compounds of essential oil of chamomile (*Matricaria chamomilla* L.) included sesquiterpene compounds such as (-)- α -biabolol (56.86%) trans-trans-farnesol (15.64%), cis- β -farnesene (7.12%), guaiazulene (4.24%), and chamazulene (2.18%), accounting for 86.04% of the total essential oil [18]. The study of Ayogi et al. (2010) showed that GC-MS analysis of *Matricaria chamomilla* L. showed the presence of compounds such as cis-anethol (51.72%), cis-beta-ocimene (8.32%), methyl-eugenol (8.06%), limonene (4.94%) and linalool (4.41%) in Tarragon, essential oil, and E-beta-farnesene (24.19%), guaiazulene (10.57%), alpha-bisabolol oxide A (10.21%), alpha-farnesene (8.7%) and alpha-bisabolol (7.27%) in the essential oil of *Matricaria chamomilla* L. [19]. The results of one study revealed the main constituents of *Anthemis coelopoda* Boiss.

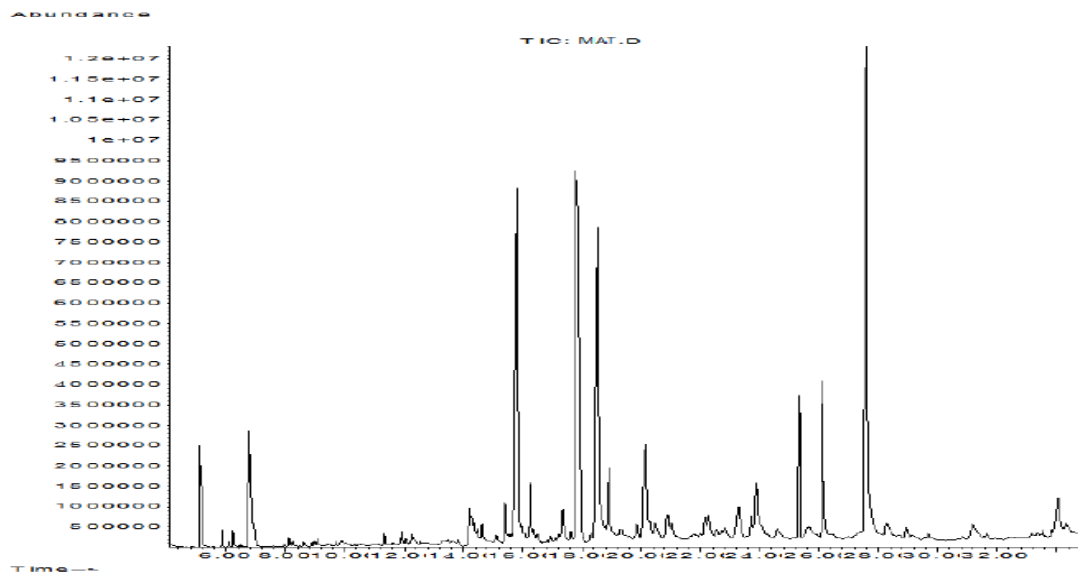


Fig. 2 Chromatogram of the essential oil of *Anthemis Susiana* Nabelek

The flower oil contained cis-chrysanthenyl acetate (27.3%), hexylbutanate (16%) and myrcene (7%), while its leaf oil contained isobornyl formate (30.6%), trans-ethyl chrysanthemate (15%) and p-mentha-1.5-diene-8-ol (13.4%) [20]. The main use of chamomile is related to the pharmaceutical and cosmetic industries [21, 22]. Due to containing certain active ingredients such as kamazolene, alpha-bisabolol, and alpha-bisabolol-A [22-24], chamomile essential oil has many therapeutic properties including anti-microbial, anti-inflammatory, anti-spasm and antiseptic properties and is used for the treatment of gastrointestinal diseases [6]. The plant is effective in relaxing the nervous system and reducing seizures and is also used for preparing compresses and naturally making hair shiny [25]. One study showed that 1-alpha bisabolol oxide amounts in different parts of Iran including Kerman, Isfahan, Shiraz, Tehran, Baba Meydan, Nourabad (Fars province), Gachsaran, Larestan and Behbahan are 22, 9-7, 11, 10-9, 65-58, 58-55, 55-42, 40-42, and 28-29%, respectively. Besides that, the amounts of 3-alpha bisabolol oxide A in Kerman, Isfahan, Shiraz, Tehran, Baba Meydan, Nourabad (Fars province), Gachsaran, Larestan and Behbahan have been reported to be 47-43, 53-54, 33, 55-54, 9-8, 16-15, 32-30, 28-14, and 12%, respectively [26]. The results of studies in Egypt, Estonia and Slovakia showed that the concentrations of alpha bisabolol oxide in chamomile (*Matricaria recutita*) were 9.28% and 15.80% and those of bisabolol oxide A in Egypt, Slovenia and Slovakia were 49.51%, 37% and 39.90%, respectively [27, 28]. In Würzburg, Germany and Riva del Garda, Italy, 1,8-cineole was found to be the main compound and alpha-pinene and camphor were reported as being the second and third main compounds in Germany and Italy; chrysanthenyl acetate and camphor were not found in the essential oil [29, 30]. Different

species of chamomile have different active ingredients. Substances such as 3-alpha-bisabolol oxide A, cis-anethol, kamazolene, alpha-bisabolol and alpha-bisabolol-A are the main constituents of other chamomile species, while in our study it was determined that alpha-bisabolol oxide A is the main compound of *Susiana* chamomile. It seems that the marked fluctuations in the type and amount of compounds of essential oils of these plants are due to ecological differences such as latitude, longitude, elevation, temperature, humidity, climate and soil, and different climatic and edaphic conditions affect metabolic pathways and the biosynthesis of active ingredients in these plants, and therefore a variety of secondary metabolites are biosynthesized under different environmental conditions.

In general, it can be said that the essential oil of this plant is influenced by various environmental and intrinsic factors both in quantity and in its constituents the main compound being alpha-bisabolol oxide A and the highest concentration of this compound among them. These compounds can be used as antioxidant compounds after further testing.

Acknowledgments

Authors would like to thank the Vice-chancellor for the Research and Technology Deputy of the Ilam University of Medical Sciences and Biotechnology and Medicinal Plants Research Center for funding this study.

Authors' contributions

MB reviewed the literature and prepared the first draft of manuscript; NA, MB, RA and IS reviewed the literature, helped in preparing first draft of manuscript, checked and

corrected the grammar. All authors read and approved the final report.

Conflict of Interests

All authors declare that no conflict of interest exist.

Funding/Support

Biotechnology and Medicinal Plants Research Center, Ilam University of Medical Sciences was supported this research.

References

- Singh O, Khanam Z, Misra N, Kumar Srivastava M. Chamomile (*Matricaria chamomilla* L.): An overview. *Pharmacogn Rev.* 2011;5:82-95.
- Ghafoor A. The genus *Anthemis* L. (Compositae-anthemideae) in Arabia peninsula: a taxonomic study. *Pak J Bot.* 2010;42:79-98.
- Javidnia K, Miri R, Kamalinejad M, Sarkarzadeh H, Jamalian A. Chemical composition of the essential oils of *Anthemis altissima* L. grown in Iran. *Flavour Frag J.* 2004;19:213-216.
- Kivcak B, Mert T, Saglam H, Ozturk T, Kurkcuoğlu M, Baser KHC. Chemical composition and antimicrobial activity of the essential oil of *Anthemis wiedemanniana* from Turkey. *Chem Nat Comp.* 2007;43:47-51.
- Rezaee MB, Jaimand K, Assareh MH. Chemical constituents of the leaf and flower oils from *Anthemis altissima* L. var. *altissima* from Iran. *J Ess Oil Res.* 2006;18:152-153.
- Al-Humaidi J. Chemical composition of the essential oils for *Anthemis melampodina* from North Saudi Arabia. *Oriental J Chem.* 2015;31:2265-2270.
- Pavlovic M, Kovacevic N, Tzakou O, Couladis M. Components of cyclohexane extract of *Anthemis triumfetti*. *Chem Nat Compd.* 2007;43:512-514.
- Hajdú Z, Zupkó I, Réthy B, Forgo P, Hohmann J. Bioactivity-guided isolation of cytotoxic sesquiterpenes and flavonoids from *Anthemis ruthenica*. *Planta Med.* 2010;76:94-96.
- Srivastava JK, Gupta S. Antiproliferative and apoptotic effects of chamomile extract in various human cancer cells. *J Agric Food Chem.* 2007;55:9470-8.
- Cemek M, Kađa S, Simpek N, Büyükkurođlu ME, Konuk M. Antihyperglycemic and antioxidative potential of *Matricaria chamomilla* L. in streptozotocin-induced diabetic rats. *Nat Med.* 2008;62:284-93.
- Mozaffarian VA. Flora of Ilam Province. Contemporary Culture Publication, Tehran. 2008;114.
- Moayeri A, Azimi M, Karimi E, Aidy A, Abbasi N. Attenuation of Morphine Withdrawal Syndrome by Prosopis Farcta Extract and Its Bioactive Component Luteolin in Comparison with Clonidine in Rats. *Med Sci Monitor Basic Res.* 2018;24:151-158.
- Bahmani M, Taherikalani M, Khaksarian M, Rafieian-Kopaei M, Ashrafi B, Nazer M, Soroush S, Abbasi N, Rashidipour M. The synergistic effect of hydroalcoholic extracts of *Origanum vulgare*, *Hypericum perforatum* and their active components carvacrol and hypericin against *Staphylococcus aureus*. *Future Science OA.* 2019;5: Article number FSO371.
- Abbasi N, Khosravi A, Aidy A, Shafiei M. Biphasic response to luteolin in MG-63 osteoblast-like cells under high glucose-induced oxidative stress. *Iranian J Med Sci.* 2016;41:118-125.
- Karimi E, Abbasi S, Abbasi N. Thymol polymeric nanoparticle synthesis and its effects on the toxicity of high glucose on OEC cells: Involvement of growth factors and integrin-linked kinase. *Drug Design, Developm Therap.* 2019;13:2513-2532.
- Lord H, Pawliszyn J. Evolution of solid-phase microextraction technology. *J Chromatography A.* 2000;885:153-193.
- Bahmani M, Taherikalani M, Khaksarian M, Soroush S, Ashrafi B, Heydari R. Phytochemical Profiles and Antibacterial Activities of Hydroalcoholic Extracts of *Origanum vulgare* and *Hypericum perforatum* and Carvacrol and Hypericin as a Promising Anti-*Staphylococcus aureus*. *Mini Rev Med Chem.* 2019;19:923-932.
- Jaymand K, Rezaei MB, Asgari F, MeshkatiZadeh S. Chemical Composition of Chamomile Essential Oil. *Matricaria chamomilla* L. *J Iranian Med Arom Plants Res.* 2001;10:105-125.
- Ayogi F, Barzegar M, Sahari MA, Badi H. Chemical Compounds of Tarragon (*Artemisia dracunculus* L.) and Chamomile Essential Oil (*Matricaria chamomilla* L.) Essential Oils and Evaluation of their Antioxidant Activity. *Intern J Agricult Sci Technol.* 2010;13:79-88.
- Rezaee MB, Jaimand K, Mozaffarian V. Essential oil composition of *Anthemis coelopoda* Boiss. *Iranian J Med Aromat Plants.* 2009;24:271-277.
- Foster S. Chamomile. Botanical series. American Botanical Council, Austin, Texas. 1991;307.
- Omidbaigi R. Production and processing of medicinal plant. *Astan ghods razavi press.* 2000;3:14-36.
- Koppel T, Arak E, Türi E. Taimse päritoluga ravimite antimikroobse toime uurimine I. *Eesti Rohuteadlane* 1993;3:107-9.
- Grgesina D, Mandic ML, Karuza L, Klapac. Chemical composition of different parts of *Matricaria chamomilla*. *Prehrambeno Tehnol Biotehnol Rev.* 1995;33:111-113.
- Ghanavati M. Study of salinity effect on some growth characters of two matricaria spices. A thesis submitted in partial fulfillment of the requirements for the degree of Master of Science, Department of plant breeding, Shahrekord University. 2007;25-68.
- Ghanavati M, Hooshmand S, Zeinali H, Ebrahimpour F. Chemical composition of chamomile essential oil (*Matricaria recutita* L.) in central and southern Iran. *J Med Plants.* 2010;9:34:108-102.
- Abd El-Wahed MSA, Krime M, Gamal ED. Stimulation of growth, flowering, biochemical constituents and essential oil of chamomile plant (*Chamomilla recutita* L. RAUSCH) with spermidine and stigmasterol application, Bulg. *J Plant Physiol.* 2004;30:89-102.
- Anne O, Tiiu K, Kailas W. Volatile constituents of matricaria recutita l. from Estonia, *Proc. Estonian Acad Sci Chem.* 2001;50:1:39-45.
- Ghanavati M, Hushmand S, Zeinali H, Ebrahimpour F. Chemical composition of the essential oils of *Matricaria recutita* L. belonging to central and south parts of Iran. *J Med Plants.* 2010;34:102-8.
- Kalodera A, Bohn KH, Schultze W. The essential oil of *Tanacetum parthenium* L. *Planta Med.* 2006;55:489-93.