

The Kansas Explorers Club is created to inspire, educate, and encourage the exploration and appreciation of Kansas...and to have fun doing it! Explorers are urged to look for the rural culture elements in each town — architecture, art, commerce, cuisine, customs, geography, history, and people.

Kansas Sampler Foundation, 978 Arapaho Rd., Inman, KS 67546
620.585.2374 kansassampler.org marci@kansassampler.org / wendee@kansassampler.org

Featuring the rural culture element of customs...

LORETTA BROUGHT THE WORLD TO GREAT BEND⁽¹⁾

Local artist Loretta Miller has designed 22 life-sized figures that represent the Santa equivalent found round the world. Using fabric and sewing notions, she has made stunning likenesses of these fabled seasonal legends. Saint Nicholas, Pere Noel, and twenty others greet you at 1223 Main Street (open through December 23 on Thursday-Friday 4-7 p.m.; Saturday-Sunday 1-5 p.m.).

Great Bend has some of the best light displays in the state. Just follow the Trail of Lights from the zoo and you'll find many other festive homemade lighting displays (through December 23).

For something different, skate on the synthetic ice rink by the courthouse. They even have skates for you! Visitgreatbend.com/events/traillights/.

WHILE IN GREAT BEND, finish your holiday shopping!

In 1906, Alfred Fuller started going door to door selling brushes. As the Fuller Brush company evolved, they developed and manufactured world-wide known cleaning aids. Now, instead of the Fuller Brush Man coming to your door, you can go to the plant where

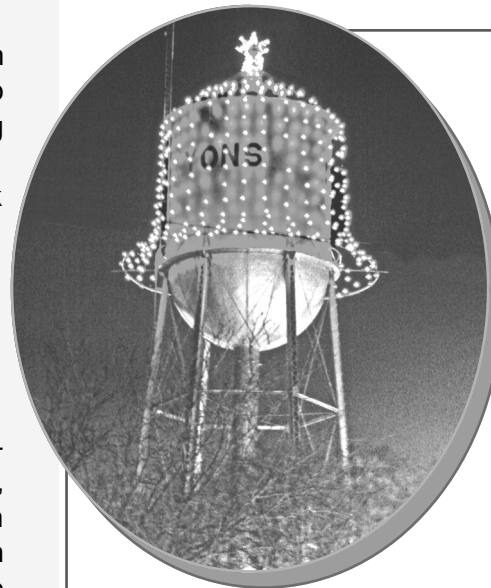


the cleaning items are made. Go west of Great Bend on 10th Street for about five miles to SW 40 Road. Turn south onto SW 40. Look for the factory outlet signs on the north side of the building. Open Monday-Friday 8 a.m.-5:30 p.m.; fuller.com.

Happy Holidays!



The Explorer spirit can prevail in any season, any temperature of the year. In the rush of this time of year, there are many ways to find meaning. Buy extra food at a small town grocery store and take it to a food bank. Take blankets or jackets to homeless shelters. Watch outdoor Christmas parades and drive through towns you don't know to see holiday lights. Find meaning, Explorers. It's all around us!



Featuring the rural culture element of customs...

OSCAR HAD A GREAT IDEA

In December, those who drive through the town of Lyons (2) after dark get to see one of the signature Christmas displays in the state — the

Lyons water tower bell and star.

In 1939, courthouse custodian Oscar Laudick created a bell with a 40-foot diameter hoop to hang from the courthouse tower. A four-foot star slipped over the metal cap at the very top of the courthouse. It could be seen for miles.

In the early 1950s the bell was rebuilt on a grander scale and moved to the water tower. The "new" hoop has 30 light streamers that hang from the top of the bell down to the hoop. It remains the star of Christmas lights in this Rice County town.

Laudick died in 1979. A nice story about the bell and Laudick is found in the south entrance of the courthouse.

Continued from p. 1

SHOPPING IN GREAT BEND

As we ERV'd in Great Bend, we kept hearing about Tammy Hammond and Rosewood Services. We weren't sure how this captivating story would fit into a guide-book but we knew it needed to be shared. We learned that everything we saw came back to Tammy's vision about how to help people with developmental disabilities live with independence, inclusion and productivity.

The first place we went was the Rosewood Furniture Gallery, 384 N. Washington (620.793.5888). Here



Rosewood clients sand, stain, varnish and assemble high quality, solid wood furniture. The public can buy from a retail area in the front.

The best stop to see a full line-up of products made by clients was the Rosewood Wine Cellar, 1901 Lakin. At this well-run gift shop the shelves were lined with wine, gourmet

coffees, horsehair pottery, soaps, candles, and home-made food products, along with other items. The woman who answered all of our questions and helped us with the wine tasting was so friendly. The wine cellar is open Monday-Thursday 10 a.m.-6 p.m.; Friday-Saturday 10 a.m.-8 p.m. rosewoodcreations.com/winecellar/.



A riding arena and vineyard were located out in the country. Clients were at work in the winery. A certified kitchen and art studio are found elsewhere.

At each place, everything was exceptional from the staff to the infrastructure. Sculptures graced each place. It'll be a shopping trip of meaning to stop at one of these Rosewood retail stores.



MAKE ONE MORE STOP

The Heart of Kansas Mercantile, 1212 Main Street, was one of the businesses opened as part of a master plan to improve the downtown shopping district with the intent to attract young people to Great Bend.

The mercantile has Kansas-related items and a nice array of other diverse and quality gifts. It's open Monday-Friday 10:30 a.m.-5:30 p.m., Saturday 10 a.m.-3 p.m.

Featuring the rural culture elements of art, commerce...

SHOPPING IDEAS

Many non-profits have gift shops with items of interest for visitors. Purchases help pay for operations.

MUSEUM GIFT SHOPS

- ◆ Prairie Museum of Art and History, Colby (3)
- ◆ Historic Adobe Museum, Ulysses (4)
- ◆ Mennonite Heritage Museum, Goessel (5)
- ◆ Finney County Museum, Garden City (6)
- ◆ Boot Hill Museum, Dodge City (7)
- ◆ Safari Museum, Chanute (8)
- ◆ Wichita-Sedgwick County Historical Museum, Wichita (9)

NATURE GIFT SHOPS

- ◆ Dillon Nature Center, Hutchinson (10)
- ◆ Great Plains Nature Center, Wichita
- ◆ Lee Richardson Zoo, Garden City (6)
- ◆ Flint Hills Discovery Center, Manhattan (12)
- ◆ Kansas Cosmosphere, Hutchinson (10)
- ◆ Strataca (underground salt museum), Hutchinson

ART

CARNEGIE ART CENTER, Goodland (14)

120 W. 12th goodlandnet.com/artscenter

Open Tuesday-Saturday 10 a.m.-5 p.m.; Sunday 1-4 p.m.; Monday 1-6 p.m. MOUNTAIN TIME

Find jewelry, glass, prints, photography, candles, pottery, woodworking, and more.

MAIN ARTERY, Ulysses (4)

103 S. Main MainARTerykansas.com

Open Monday-Friday 10 a.m.-5:30 p.m.; Saturday 10 a.m.-4 p.m.

Nineteen regional artists showcase and sell art here.



ALWAYS CHRISTMAS SHOPPE,

Barnes (15) (Washington Co.)

107 W. Railroad

Open Thursday-Saturday 12-4 p.m.

(If you come another day, just go to the Sunflower Mercantile and they'll get the shop opened for you!)

Barnesks.net/AlwaysChristmas.html

Shopping for Christmas happens here all year round in the Historic Barnes State Bank Museum building. Find all sorts of holiday decorations as well as gifts.

LEE'S FLORAL SHOP

106 W. 5th, Holton (16)

785.364.2123

KE #1217, this is for you. Cigars on sale here!



Rural Kansas Come... and get it!

 **NEXT EXIT**

One of the 85 towns that have put information on the "Rural Kansas: Come & Get It" site is Minneapolis. To get more information than is stated here, go to getruralkansas.org and select Minneapolis from the drop down list.

MINNEAPOLIS (17), pop. 2,022 County seat of Ottawa County

ARCHITECTURE: Twin Houses 500 W. 2nd and 315 N. Rothsay

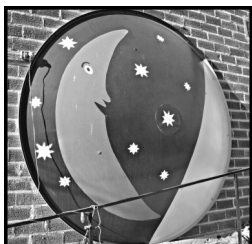
Minneapolis founder Israel Markley built each of his two daughters a Queen Anne house. Being a wise father, the houses were identical. The houses no longer look exactly the same as subsequent owners have remodeled and added on. The house on W. Second Street looks the most like the original.

ART: Gateway

Anyone who has driven U.S. 81 has seen the mysterious stone arch on the east side of the highway, a few miles north of Minneapolis. Jim Jagger and Ron Parks erected this arch in the Jagger's pasture in the 1970s. The arch made of field stones resides at the crest of the hill and is visible on the horizon.

COMMERCE: **Go Spelunking** 317 W. Second

Toys, paint, hardware, gifts, you'll find it all at the wooden-floor hardware store. In the summer Hometown Hardware also serves as the ice cream shop. See a mural by a local artist on the lower level wall. Open Monday-Saturday 8 a.m.-5 p.m.; Sunday 1-5 p.m.



CUISINE: **Go eat in the basement** **Alley of 307 W. 2nd**

It feels like you're entering a prohibition speak-easy when you turn into the alley and enter the Blue Moon steakhouse down basement steps. You'll be glad you took the risk with Kathleen and Kermit Wedel!

Call 785.392.3491 for reservations.

CUSTOMS: MARKLEY'S GIFT OF A GROVE Mill Street and K-106

Israel Markley donated this land so the town would have a park. The trees have grown tall and the marble marker to Markley and historic water fountains are almost lost among all the playground equipment, picnic tables, and the swimming pool. The entrance to the park is also a memorial to Markley.



GEOGRAPHY: CLIMB A GIANT ROCK 1051 Ivy Road. 3.6 miles south of Minneapolis on K-106, the 1/2 mile west on Ivy Road.

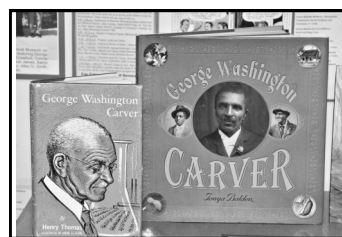
The scientific story is that this collection of 200 concretions at Rock City was deposited here over 100 million years ago. This playground of rocks is what is left from a complex weathering and erosion process of Dakota Formation sandstone. All you really need to know is how much fun it is to crawl on and photograph these rocks. During summer hours there is a small fee but you can come here any time of the year.

HISTORY: **Horses slept at the inn** 431 Mill St. 785.392.7232 Millstreetinn.net

Built by a veterinarian in 1911, the basement was originally used for animals. The upstairs was the family home and office area. Now Cliff and Pat Johns have repurposed this limestone building into the lovely Mill Street Inn, a classy place for an overnight stay.



PEOPLE: Ah, nuts! **Ottawa County Museum, 110 S. Concord,** **open Tuesday-Saturday 10 a.m.-12 p.m. & 1-5 p.m.**

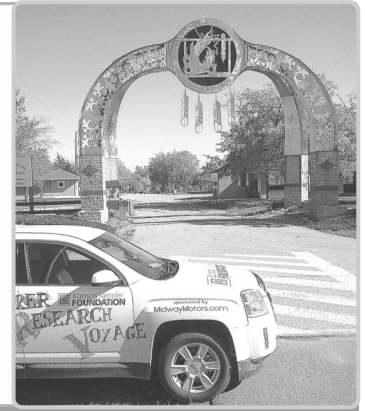


George Washington Carver went to high school in Minneapolis from 1880-1884. He went on to become nationally known for his work with peanuts, pecans, soybeans, and sweet potatoes. He created 325 products just from peanuts! The best place to learn more about this man is at the Ottawa County Museum.

WE WANT TO SHARE THE INFORMATION NOW!

Marci and WenDee, KSF staff, are going to every town in the state to research for the next *Kansas Guidebook for Explorers*. We travel in a car donated by Midway Motors, McPherson, and we call it ERV (Explorer Research Vehicle). We call our journey ERV, too, Explorer Research Voyage.

Because the book may not come out until Christmas 2015 (at the earliest) we want to find other ways to share the information with you now. This newsletter is one way. On Facebook ([facebook.com/ERVoyage](https://www.facebook.com/ERVoyage)) we share our location in real time. As we have time, we add pictures and more of the story on our ERV blog, kansassampler.org/erv/. We'd love to have you enjoy this trip with us!



GREAT THINGS ON THE ERV TRIP!

OFF THE SQUARE BAR & GRILL, Holton (16)
325 New York Mon.-Sat.
10:30 a.m.-late



Curiosity gets the best of you. When the sign to a bar and grill is an old movie theater marquee you've got to go in. Inside you'll find tin ceilings, wainscoting and wall; wooden floors, friendly people and the best hamburgers in town!

STERLING (2) CEMETERY, 500 E. Cleveland
Haran Gravestone: We couldn't believe all the information found on one gravestone! Take the second most north driveway to see this big black granite stone. Along with birthplace, parents, and children it also lists names of pets, favorite sports teams, hobbies, places of work, and more.
Kansas Baum: Kansas as a first name, Baum as a last? Find the red granite stone across the driveway from the Haran stone.



STONE POST, Inman (18)

Located north of Inman on old K-61. Open Mon.-Fri. 9:30 a.m.-5 p.m.; Sat. 9:30 a.m.-12.



The business has moved from the family farm into a metal building on the edge of Inman. It's a happy place and full of all sorts of puzzles, house gifts, kitchen items, —and the best dish rags anywhere!

COFFEE CUP at the Broadway Market, 105 S. Broadway, Sterling (2)
7:30 a.m. through lunch Mon.-Sat.



Enter this old newspaper building and shop for floral needs or keep going to the cozy sandwich shop in the back. They serve chai tea, specialty coffees, soups, wraps, pastries and more. The pulled ham and apple Panini was one of the best sandwiches we've found in Kansas!

ERNESTINE'S BAR-B-Q, Nicodemus (19)
East end of town. Open Friday-Saturday
11 a.m.-8 p.m. 785.839.4050



Angela Bates is invoking the kitchen spirit (and recipes) of Ernestine Duval. If ribs are on the menu, you'll be eating meat that just falls off the bones. The out-of-this-world baked beans and potato salad have just a few secret ingredients that make all the difference. But then the quiche might be the best secret of all! Angela's menu may differ when you are there — but it's all good.

MORLAND (19) MERCANTILE
Corner store on north side.
Open Monday-Friday
7 a.m.-6:30 p.m.; Saturday
7 a.m.-2 p.m.



The shiny old wooden floors and tin-pressed ceiling make this newly opened store a wonderful shopping destination for those who want to support a small-town grocery. Eat down the street at Prairie Junction after you shop!

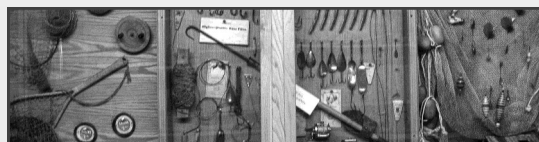
NEW GOTTLAND LUTHERAN CHURCH

1822 17th Avenue, McPherson (18)



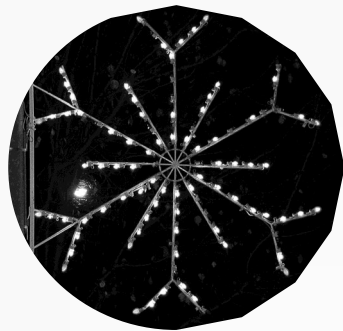
Those who travel U.S. 81 will have noticed this church with the recognizable red brick, steeple, and big circular window. It's just a couple of miles north of McPherson, a short distance to the east. The interior has a simple, yet elegant Swedish feel to it.

KINGMAN (21) HISTORICAL MUSEUM
400 N. Main. Open Friday 9 a.m.-4 p.m.



See a great collection of old-time fishing lures here. Another great place for antique fishing lures is Baxter's Bait and Tackle in Stockton (19).

Featuring the rural culture element of customs...



THE HOLIDAY LIGHTS OF KANSAS!

The call went out to Facebook Friends for Christmas light displays. So many suggestions came in that only some could be listed. See kansassampler.org for the entire list.

BELLEVILLE (22), at Rocky Pond (E. 12th). Find LED lights on seasonal and whimsical display frames, all made in Belleville. Drive through and enjoy the reflections on the frozen fish pond. Open nightly 6-9 p.m. and on Friday-Saturday nights until 10 p.m. through December 31. Free.

WAKEENEY (23), Christmas City of the High Plains. Three thousand lights are used on a hand-made 35-foot tree of fresh pine greenery. The tree rests under a canopy of heavenly blue lights in the middle of the intersection of Main and Russell Avenue. To complete this Christmas wonderland, a four-square block area around the tree is draped with fresh greenery; handcrafted wreaths, bells, bows, and trees and more twinkling lights.

WAMEGO (24). The city parks crew made all the decorations that depict Wamego past and present. See lights through the end of the year on Lincoln Street, at the City Park, and at the recreational complex.

WINFIELD (25). The Isle of Lights, North Main Street (N. U.S. 77). Drive through historic Island Park until December 30 to see it decorated with one lighted display after another. Free. It was chosen as the 16th best place to view Christmas lights in the nation. Isleoflights.org.

EMPORIA (26). David Traylor Zoo closes at 4:30 p.m. but drive on Soden Street in front of the zoo and you'll have a great view of the 48,932 bulb display. Through January 1. (Take S. Commercial to Soden).

NEAR INDEPENDENCE (27). The report is that there is a pretty awesome display at the unincorporated town of Bolton, six miles southwest of Independence. "They string lights on every fence, barn, old car and farm implement on the place."

MARYSVILLE (28), through December 31, see the downtown Koester Block, historic courthouse and Broadway Street come alive with an impressive light display. Also see the street-side neighborhood displays of Park Place and Debbie Lane from 12th to 16th Street.

LAWRENCE (29), 1132 Parkside Circle. Since 2008, Gary and MaryAnn Martin thrill neighbors and so many more with their synchronized light and sound light display. Until 10 p.m. every night until January 6. This is their Christmas gift to the community!

WICHITA (9), Botanica Illumination, 701 Amidon. More than 200 trees are incorporated into the synchronized light displays. Must call in advance for tickets, through December 31. Botanica.org or 316.264.0448.

TOPEKA (30). Homes in the six block area of historic Potwin Place are each beautifully decorated. Theme displays are found in the roundabouts. Drive north on SW Woodland Avenue from SW 4th to get started for a tour of this residential district listed on the National Historic Register.

WELCOME TO THE EXPLORER FAMILY!

This is a list of those who have joined since the last newsletter.

- #6216 Margaret Smith, Lawrence
- #6217 Joan Breit, North Newton (Gift from #3372 Donna Feudner, Newton)
- #6218 Joe McMillian, Olathe
- #6219 Steve & Carmaine Ternes, Emporia (Gift from #6024 Steven and Monika King, Atchison)
- #6220 Ladeana Mullinix, Farmington, AR
- #6221 Cathy Walker, Sharon Springs (Gift from Etta Walker)
- #6223 Jay Anderson, Abilene (Gift from #3942 Stew Etherington, Abilene)
- #6224 Janice Friedman, Lawrence (Gift from #5532 Liz Kowalchuk, Lawrence)
- #6225 Alison Birney and Fred, Bryan, Brandon, & Mikayla, Manhattan
- #6226 Pat Lechtenberg, Lawrence (Gift from #2621 Phillip Godwin, Lawrence)
- #6228 Kim Pitner-Keller, Olathe
- #6229 Jim and Kathy Germolus, Wichita
- #6230 Brian & Chepina Rumsey, Manhattan
- #6231 Tionna Haberman, Auburn (Gift from #348 Charles & Connie Peckham, Atwood)
- #6234 John & Anita Lysell, Wichita
- #6235 Dan & JoAnn Johnson, Shawnee
- #6326 Susan Marshall, Peabody (Gift from Morgan Marler and Lindsey Marshall)
- #6327 Linda Rice, Manhattan

AND THERE'S MORE!

Almost every town has some kind of Christmas light displays but here are a few more that came recommended:

PARKS: Beloit (31), Chanute(8), Pratt(32), Colby(3), Minneapolis(17), Garden City(6), Harper(33), Hill City(19), Smith Center(34), and Topeka (Lake Shawnee).

DOWNTOWNS: Holton(16), Iola(35), Yates Center(36), Pittsburg(37), Tonganoxie(38), Clyde(39).

Wanting to buy

nostalgic games?



Moon Marble Company in Bonner Springs (40) has every marble or marble game you could want plus collectibles and retro games from Jacks to Rook to the Parcheesi.

Located at 600 E. Front and open Tuesday-Saturday 10 a.m.-5 p.m. Moonmarble.com.

THANKS RENEWERS!

We love writing your name on this page!

(This is a list of those who have renewed between the last newsletter and Dec. 7.)

- #13 Rick Eberhard, Kechi
- #54 Gene & Barb Merry, Burlington
- #56 Ken Lundgren, Marion
- #82 Jane & John Rhoads, Wichita
- #99 Karen Sturm, Caldwell
- #122 Milton & Darlene English, Pratt
- #175 Andrea Springer & Steve Snook, Hutchinson
- #201 Otis & Carolyn Meredith, Meade
- #204 Frances Calderwood, Sterling
- #205 Duane & Kathy Schwab, Ellinwood
- #268 Gloria Moore, Barnes
- #327 John & Marcie Putnam, Dodge City
- #333 Paul & Linda Beckman, McPherson
- #457 Evelyn Davis, Wakarusa
- #501 Paul Bahnmaier, Lecompton
- #531 Jeannine Tatum, Topeka
- #571 Chuck & Joyce Trimble, Burlington
- #573 John & Charlene Van Walleghen, Wichita
- #598 Gary & Kay Nelson, Wichita
- #667 Sid & Carole McKnight, Parker
- #668 Gwydotta Ukens, Concordia
- #681 Darrell Albright, Pretty Prairie
- #683 Mike & Carra Mayberry, Kiowa
- #684 Judy Casey, McPherson
- #692 Sharron Hamilton, Salina
- #703 Allen & Sally Frame, Kinsley
- #711 Criss Mayfield, Wamego
- #719 Jim & Kathy Richardson, Lindsborg
- #752 Bill & Linda Richter, Manhattan
- #781 Vicki Gillett, Larned
- #821 Tom & Gerry Winters, Wichita
- #835 Christine Hecke, Spring Hill
- #843 Jeanice & Maynard Cress, Humboldt
- #875 Roy & Judy Marks, Topeka
- #897 Jerald Stinson, Plains
- #902 Emily Wellman, Lawrence
- #914 Walter King, Pretty Prairie
- #962 Art Warren, Wichita
- #973 Harry & Mary Nolde, Holcomb
- #1122 Eunice Polgreen, Junction City
- #1165 Albert Hamscher, Manhattan
- #1176 Verlyn Richards, Manhattan
- #1234 Jane Koger, Matfield Green
- #1261 Harland & Suzanne Schuster, Morrill
- #1282 Lucille Flynn, Pratt
- #1287 Margo Yates, Marion
- #1293 Chris Campbell, Ottawa
- #1301 Lois Wiens, Inman
- #1358 LeRoy Bohrer, Zenda
- #1485 Lois Modlin, Scott City
- #1502 Victor J. D. Lipari, Albuquerque
- #1505 Emma Crites, Fredonia
- #1559 Tom & Florence Haskett, Emporia
- #1587 Charles & Ina Kay Zimmerman, Olathe
- #1650 Don & Pat Haberer, Russell
- #1748 Anne Schmidt, Abilene
- #1770 Judith Johnson, Wichita
- #1773 Viola & Keith Megill, Seneca
- #1847 Bob & Deanna Castle, Oberlin
- #1885 Ruth & Irv Hayden, Atwood
- #1943 Donna M. E. Walker, Johnson
- #1948 Janice Nunn, Garden City
- #1958 Donna & Francis Wiley, Lawrence
- #1969 Mary Johnson, El Dorado
- #1980 Ronnie & Judy Dayhoff, Boulder, CO
- #1986 Charles Ruth, Scottsdale, AZ
- #1997 Shirley Jensen, Waterville
- #2001 Dave Kendall & Laura Mead, Topeka
- #2014 Lauranell Stewart, Wamego
- #2026 Mary Lou Pickler, Ulysses
- #2035 Bob & Jan Topping, Lawrence
- #2051 Evelyn & Bob Neier, Wichita
- #2057 Duane Miksch, Manhattan
- #2147 Bob Burket, Santa Monica, CA
- #2188 Shirley & James Gilchrist, Topeka
- #2387 BarBara Wright, Anthony
- #2428 David Douglass, Topeka
- #2474 Cynthia Turner, Hutchinson
- #2543 Kenneth Brown, Coffeyville
- #2606 Jim Schaller, Topeka
- #2629 Virginia Richards, Perry
- #2661 Jerry & Cathy Newland, Silver Lake
- #2663 Margaret Moore, Beloit
- #2696 Greg & Elaine Miller, Wamego
- #2703 Cheryl Unruh & David Leiker, Emporia
- #2732 Ann Branden, Lawrence
- #3407 Phyllis Strnad, Scandia
- #2803 Don & Alleta Biggs, Kansas City, MO
- #2817 Jayann Fordon, Scottsdale, AZ
- #3001 Bernice Hostetler, Harper
- #3038 Margaret Louthan, Salina
- #3074 Judy Lilly, Salina
- #3085 Larry Freeze, Topeka
- #3113 Marvin & Mary Meisinger, Marion
- #3117 Ken McCosh, Manhattan
- #3128 Franklin & Nancy Thompson, Lenexa
- #3144 Merrill & Wendy Cunningham, Chanute
- #3165 Ellen Lee, Humboldt
- #3183 David & Irene Norman, Nickerson
- #3198 Richard & Jane Hitchcock, Wichita
- #3226 Norman Karlin, Hutchinson
- #3318 Genna & Greg Hurd, Lawrence
- #3372 Donna Feudner, Newton
- #3404 John & Venetia Maddux, El Dorado
- #3408 Marion Renner, Haysville
- #3444 Robert, Rita, Kimberly & Jonathan Johnson, Towanda
- #3473 Charles Bredahl, Topeka
- #3478 Jack & Kathie Crispin, Lincoln
- #3499 Ralph Rust, Andover
- #3507 Doug & MarSue Mackey, Lawrence
- #3638 Alan & Marie Hanson, Pratt
- #3645 Dave & Bonnie Fruth, McPherson
- #3660 Julia, Greg, Jake & Sydney Bolin, Wichita
- #3746 Anita Byers, Hot Springs Village, AR
- #3753 Dean & Shirley Taylor, Manhattan
- #3760 Johnny Maupin, Dodge City
- #3783 James and Joyce Jordan, Arkansas City
- #3858 Jim & Betty Scheller, Salina
- #3869 Judy Hill, Topeka
- #3956 Doug Van Auken, Prairie Village
- #4000 Mary Meck Higgins, Manhattan
- #4034 Elizabeth Jo & Becky Ann McRae, Herington
- #4048 Judy, Skip & Sarah Montgomery, Garden Plain
- #4090 Beverley & George Wilson, Lawrence
- #4141 Barbara Anderson, Iola
- #4194 Wayne Thornton, Topeka
- #4199 Bonnie Deiter, Garnett
- #4261 Dan Wagner, Paxico
- #4290 Rich & Edna Williams, Junction City
- #4366 Bill Woods, Lawrence
- #4397 Susan Taylor, McPherson
- #4430 Pauline Fecht, Syracuse
- #4432 Matthew, Betsy, Anna, Katie, and Jimmy Lobmeyer, Garden City
- #4495 Pat Fischer & Roger Elliott, Stilwell
- #4505 James & Beverly Logan, Olathe
- #4513 Jaron Weese, Russell
- #4525 Beverly Sharp, Overland Park
- #4574 Richard Hamilton, Overland Park
- #4578 Betty Marshall, Wichita
- #4600 Bonnie Danley, Kansas City
- #4721 Randy Rundle, Clay Center
- #4774 Concha Walker, Wichita
- #4788 Carole Geier, Garden City
- #4837 Karen, Larry, Charlotte & Otto Goering, St. Louis
- #4888 April Burger, Jefferson City, MO
- #4904 Dale & Alta Snapp, Wamego
- #4924 David Ade & Stephanie Harsin, Topeka
- #4939 Robert & Virginia McCoskey, Wichita
- #4952 Pam Bowers, Marion
- #4977 Larry Rose, Wichita
- #4990 Linda & Galen Craghead, Alma
- #5028 Dallas & Nancy Nading, Concordia
- #5050 Ann Hertzog, Lawrence
- #5073 Ken & Nina Warren, Manhattan
- #5115 Brenda E Baker, Woodland Park, CO
- #5117 Sharon Smith, Olathe
- #5152 Shirley Stein, Dodge City
- #5173 Jim Mathis, Leavenworth
- #5214 Anne Hassler, McPherson
- #5326 John & Lois Markley, Howard
- #5483 Ann Looney, Jetmore
- #5502 Bennett & Catherine Green, Kansas City
- #5532 Liz Kowalchuk, Lawrence
- #5539 Pat Barnhardt, Leavenworth
- #5550 Susan and Joe Curtiss, Wilson
- #5562 Eric, Lisa, Nicholas & Lydia Hays, Leawood
- #5563 Mary Alice Wiard, Wichita
- #5587 Linda Morrison, Wichita
- #5592 Janet Krack, Wichita
- #5593 Edith Taylor, Lawrence
- #5701 Reginna Strobel, Arkansas City
- #5714 Barbara Poresky, Manhattan
- #5781 Jana O'Neil, Lenexa
- #5799 Dot LeClerc, Hays
- #5800 Belinda & Lucille Schliesener, Molly Milakovich & Bud Southard, Emporia
- #5801 Larry Strecker, Topeka
- #5846 Jim Thorn, Wichita
- #5892 LeAnn Cox, Hutchinson
- #5971 Elvin & Gloria Bombardier, Abilene
- #5976 Elaine Fritzon, Turpin
- #5988 Robert Cuevas, Lincoln
- #5997 Jade Piroso de Carvalho, Hutchinson
- #6005 Jan Cambridge-Lewis, Lindsborg
- #6006 John, Laura, Jacob & Oliver Goerzen, Hesston
- #6009 Steve Elmore, Wichita
- #6019 Roger & Sheila Miller, Bonner Springs
- #6022 John & Eloise Philbrick, Wichita
- #6024 Stephen, Monika King, Dominik, Viktoria, and Alexander King, Atchison
- #6030 Margaret & Stan Endecott, Olathe
- #6034 Ann & Chuck Brussow, Abilene
- #6039 Susan Draper, Colby
- #6048 Marvin Lynch, Iola
- #6062 Pat Ragling, Independence
- #6064 Vern & Bonnie Adams, Baxter Springs
- #6076 Sherry Soyez, Marion
- #6077 Woodrow Crawshaw, Marion



RENEW!

We really value your membership! For one, it means that you are hearing about what there is to see and do in Kansas. Currently, your membership also helps pay for gas and lodging while we're on the road researching for the next guide-book.

A special heartfelt thank you to the many of you who renew year after year and to those who give gift memberships.



Kansas Explorers Club Membership and Renewal Form

Explorers Name _____ Names for family membership: _____

First-timer _____; Renewal _____; Renewers, list your Explorer number (if you know it) _____.

Phone _____ E-mail _____

Address _____ City _____ State _____ Zip _____

Gift membership to: _____ Mailing address _____

This is a gift from: _____ (Gift card will be enclosed).

Annual dues: Individual membership \$18.61; family \$30. (Family membership prior to #881 is grandfathered in at \$18.61)

Check is enclosed _____ or Visa or Master Card # _____ Exp. date _____

Name on card _____

I'd like to add a donation to support the ERV research trip _____. My payment is for _____ years of membership.



EXPLORER TRACKINGS

KE #5592 Janet Krack and family spent several days exploring northwest Kansas in October.

Janet Carman not only welcomed them at the Cheyenne County Museum in St. Francis (41) but invited them for lunch with her friends. The family from Wichita went to the Cherry Creek Encampment and called it "an impressive memorial." They were in awe of the Arikaree Breaks, especially the colors of the grass and vegetation. They said the Breaks "should be their own physiographic region!"

They drove 995 miles, saw 18 Wonders, 14 structures on the National Register of Historic Place, six stone bridges, and 14 courthouses.

Ronda Crossland, **KE #6170**, and kids left Atchison to visit the Garden of Eden, Grassroots Museum, and the Bowl Plaza in **Lucas** (42) and then dropped down to **Anthony** (33) to visit the soda fountain and then to **Kiowa** (43) to see the bronze statue of the land rush. The young daughters had a "blast on the rocks" at Rock City near Minneapolis.

Rick and Jane Hitchcock, **KE's #3198** from Wichita, continue to chalk up one Explorer adventure after another. They've walked around the Botanica (**Wichita**)



Featuring the rural culture element of architecture, geography...

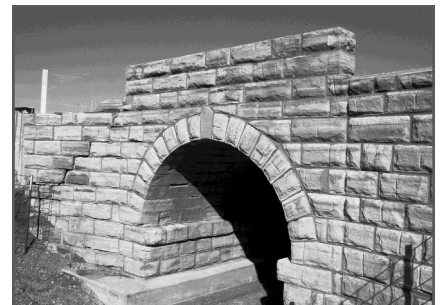
QUEST UPDATE

KE #3499 Ralph Rust has a quest to visit every library in Kansas. Since he travels on weekends and holidays, the libraries aren't always open so he's modified his quest to at least touch the door of every library. He's been to over 50 now. He is also visiting used book stores. Way to go, Ralph!

lights, judged outhouses at the **Elk Falls** (44) Outhouse Festival, hiked at Cross Timbers State Park in **Woodson County** (36), and toured the stone bridges of **Butler County** (45) on a self-guided tour. Along the way they always shop at locally-owned stores, take a lot of pictures, and act as ambassadors for Kansas.

KE #2696 Elaine Miller and husband Greg, from Wamego, raved about the Christmas lights at **Belleville's** (22) Rocky Pond and the town square. They ate at the Dinner Bell and said

the food was very good and the staff was very attentive and courteous. They gave it a 9 out of 10. Why not a 10? They were out of homemade coconut cream pie!





THE EXPLORER #101

c/o Kansas Sampler Foundation
978 Arapaho Road
Inman, Kansas 67546

Non-profit organization
U.S. Postage
PAID
Permit No. 24
Inman, KS 67546

Return Service Requested

Use a credit card to renew or join online
at explorekansas.org.

**IF IT'S TIME TO RENEW THERE WILL BE A NOTICE ABOVE
YOUR NAME ON THE ADDRESS LABEL AND AN INSERT.**

Featuring the rural culture elements of art, customs

TAKE IN SOME THEATRE WHILE IT'S COLD OUTSIDE

ATTEND COMMUNITY THEATRE

Topeka Civic Theatre, 3028 SW 8th, 785.357.5211
topekacivictheatre.com/productions/

One of the 8 Wonders of Kansas Customs finalists, the dinner theater was founded in 1936 and now is serving dinner and producing great shows in the renovated 1929 Gage Elementary School.

Great Plains Theatre, 300 N. Mulberry, Abilene (46)
785.263.4574 greatplains theatre.com

Professionals stage "Nun crackers" in this 1881 Victorian Romanesque limestone church through December 22.

Columbian Theatre, 521 Lincoln, Wamego (24)
Columbiantheatre.com 800.899.1893.

"Miracle on 34th Street" plays at this community theatre through December 22. "Nonsense" starts on February 7. Productions take place in this renovated 1895 limestone beauty. Murals from the 1893 World's Columbian Exposition have been refurbished and are located in the theatre.



Bowlus Fine Arts Center, 205 E. Madison, Iola (35)
Bowluscenter.org 620.365.4765

Music, theatre, and art exhibits all take place in this 1964 art deco treasure.

Sign up for the free online Explorer Extras
kansassampler.org. Click on "join e-mail lists."

FIND EACH COUNTY HERE

41						34		22	15	27									
Cheyanne	Rawlins	Decatur	Norton	Phillips	Smith	Jewell	Phelan	Washington	Marshall	Nemaha	Brown	Doniphan	Atchison	Leavenworth					
14	3	Sheridan	19			31	39	12	24	16			38	40					
Sherman	Thomas	Graham	Rooks	Osborne	Mitchell	Cloud	Clay	17	46	11	30	29	Johnston						
Wallace	Logan	Gove	23	42	Lincoln	Ottawa	11	46	11	Dickinson	Morris	26	Osage	Franklin	Miami				
Greeley	Wichita	Scott	Lane	Ness	Rush	1	Barton	2	18	5	Marion	Chase	Lyon	Coffey	Anderson	Linn			
Hamilton	Kearny	6	Finney	Hodgeman	Pawnee		Edwards	10	Harvey	45	Greenwood	36	35	Bourbon					
Stanton	4	Haskell	Gray	7	Ford	32	Kiowa	21	9	45	Butler	44	Wilson	8	37				
Morton	Stevens	Seward	Meade	Clark	Comanche	43	Barber	33	Sumner	25	Cowley	Chautauqua	27	Montgomery	LaBette	Cherokee			

THINGS TO CHAT ABOUT ON COLD EVENINGS

1. What should my individual or our family Explorer Quest be for 2014? *A quest is a challenge to achieve a self-selected goal in a certain area. For instance, maybe you want to collect a jar of soil from each of the 11 physiographic regions or sing on the stage of every amphitheater in the state. We love to hear about your Quest or get your updates. Send to marci@kansassampler.org.*
2. Pick a small town or two and decide how many dollars worth of stamps you'll buy from them this year.
3. Find a small town grocery store, buy a few things, and take the goods to a food bank.
4. "Like" the ERV Facebook page and cheer on Marci and WenDee as they go to every town in the state! www.facebook.com/ERVoyage.

