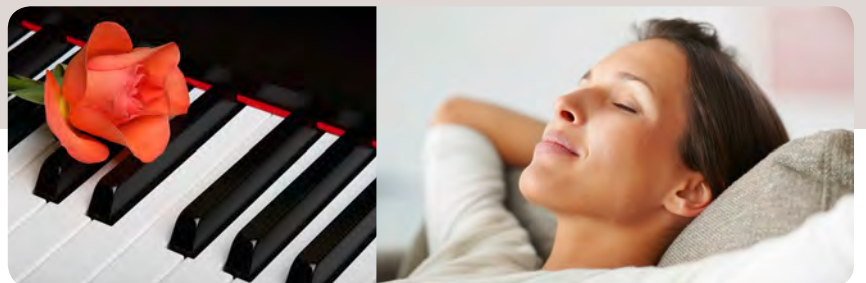


Product Overview



About ELAC



Audio Fascination

Hear the silence. See with closed eyes. Become one with the music. Have the best seat in the concert hall. Front row tickets. Feel the music. Totally immerse yourself in it. Share our fascination with sound - ELAC.



Proprietary Technologies

Technological leadership is not something you need to discuss; you simply have to hear it. ELAC products have won numerous awards worldwide, and with good reason. Whether it's our Jet Tweeter or bass driver with crystal membrane, you'll find the knowledge and skill of our experienced and ingenious engineers in every ELAC loudspeaker.

Mission Statement

„Passion for music - ELAC brings it to life.“



Passion for Quality

Finest German Engineering - call us conservative, but quality is more than just a word to us. It is our passion. That is why no speaker leaves the ELAC factory without thorough German approval.

ELAC Moments

The sound from ELAC loudspeakers recreates unique moments, inspires fascination and leaves a lasting impression.



Experience

Music makes us feel truly alive. Brings back memories. Inspires and exhilarates us. Comforts and relaxes us. We understand that and we feel the same way. That's why we build loudspeakers for aficionados. We have the right model for everyone.



Heritage

When we started in 1926, we wanted to achieve the very best. This holds true as much today as it did back then.





FS 609 CE

ELAC's high-end flagship
FS 609 CE impresses
all down the line



A floor-standing loudspeaker that resembles a cathedral: the FS 609 CE towers over them all. Offering exceptional performance and equipped with 4Pi II and X-JET sound transducers, this loudspeaker meets the highest audiophile standards. The FS 609 CE represents the best that ELAC has to offer – in every respect.



▲ Bi-wiring connection and solid spikes



◀ Controlled highs
Optimal adjustment of volume and cut-off frequency of the 4Pi II tweeter





Line 500 VX-JET

It can sometimes be hard to find something truly exceptional ... but this time it couldn't be easier.

Thanks to its peerless design, the 500 line delivers an exceptional performance time and again.

Visually unassuming but packing a powerful punch, the greatest innovation of the 500 line is the ELAC VX-JET. The acclaimed ELAC X-JET drive unit, which combines the renowned JET tweeter with a ring radiator midrange driver in a concentric arrangement, provides the foundation. What sets it apart is the variable X-JET suspension, hence the designation VX-JET.

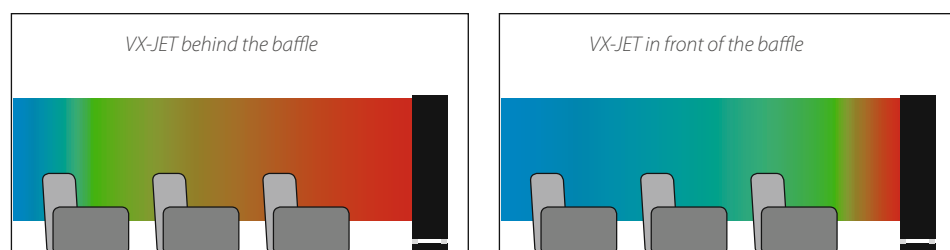
The thinking behind this drive unit draws from the fact that every room presents different acoustic characteristics and that the same loudspeaker will produce different results from one room to another. A mechanism on the rear of the loudspeaker allows for stepless adjustment of the entire drive unit by up to 8 mm in front of and behind the front baffle.

By changing the position of the VX-JET, it is possible to influence the sound dispersion characteristics in the middle to high-frequency range. This not only alters the tonal balance, but also the relationship between direct and diffuse sound arriving at the listening position. As a result, the VX-JET makes it possible for the first time to create a uniform and precisely etched three-dimensional sound stage in different rooms and at varying listening distances.

In the 500 line, three models combine the innovative VX-JET with every conceivable refinement that marks out a loudspeaker of true distinction. From painstakingly crafted bass and mid-range drivers to the finest crossover components and beautifully finished cabinets – wherever you look, you'll find our passion for detail! And why do we do it? To create an audio experience, to bring dynamics to life and to turn precision into fascination!

The Line 500: Fascination through innovation

This diagram illustrates how VX-JET technology enables adjustment of the optimal listening area (GREEN) in a room.



Coloured areas in the graphic: RED: dominant direct sound. GREEN: natural balance between direct and reflected sound. BLUE: dominant reflected sound



FS 509 VX-JET

It knows no limits: The FS 509 VX-JET reproduces even the most challenging musical material with unprecedented authority, irrespective of room size. Listening pleasure increases with every bar and even the wildest dreams become reality.

Nothing was left to chance when it came to supporting every aspect of the VX-JET's performance, so you'll find even more innovations on the front baffle.

The most noticeable of these are the two new woofers. With a diameter of 220 mm, they do more than simply raise expectations.

The interplay between crystal membrane technology and the impressive drive system delivers deep and absolutely precise bass reproduction at all volume settings.

A new woofer/mid-range unit featuring all the familiar ELAC technologies including the crystal membrane and LLD driver rounds out the driver complement and guarantees that no detail of the recording gets lost.



Side view of the VX-JET

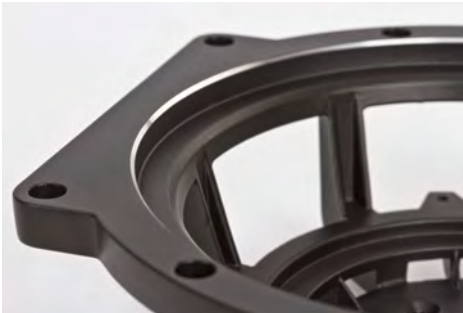
- ◀ VX-JET retracted into front baffle
- ◀ VX-JET extended out from the front baffle

*Rear panel of the Line 500 loudspeakers
Adjusting knob for altering the position of the VX-JET*



CC 501 VX-JET

For those who are unwilling to compromise, the CC 501 VX-JET is the loudspeaker of choice. It creates a surround sound environment that seems to blur the lines between what's real and what's imagined.



All speaker drivers are equipped with an aluminium die cast frame.

One look at the choice of crossover components will banish the last remaining doubts. High grade, neutral-sounding air coils and film capacitors manage the assignment of the different frequency bands to guarantee maximum transparency and a richly detailed sound.



◀ Metal Grille and Ultimate Spike



FS 507 VX-JET

Combining innovation and elegance like almost no other loudspeaker. No matter where you position the FS 507 VX-JET ... it will take your heart by storm! From the deepest lows to the airiest highs, it creates a breath-taking listening experience.

Two 180 mm woofers are in charge of the lower frequency range.

Two 180 mm woofers handle the lower frequency range.

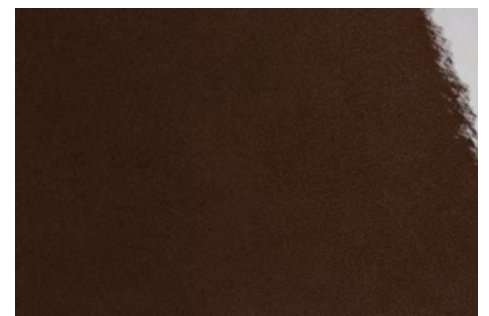
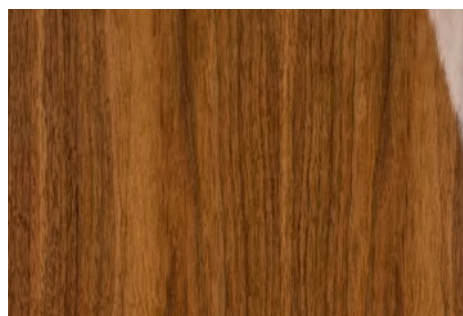
The combination of crystal technology and the impressive drive system presents an accurate, life-like reproduction of sound. In conjunction with the VX-JET, no detail is left undiscovered.



▲ *Standard in the 500 line*
Bi-wiring terminals mounted on a solid aluminium plate with high-quality jumper cables

Loudspeakers in the 500 line are available in three colours:

- ◀ *Black Lacquer High Gloss*
- ▶ *Walnut Veneer High Gloss*
- ▶▶ *Tobacco Lacquer High Gloss*





Line 400

From the first inspiration to the finished product, the development of the 400 line was driven by one idea only: a desire to deliver more!

The first models of the line are now available and they sound every bit as good as they look.

The most striking acoustic innovation is the JET 5 tweeter, which makes its debut in this line of loudspeakers. Outwardly recognizable by its modified appearance, it converts electrical signals with even greater precision – virtually free of inertia. By combining it with a new simplified crossover, we have managed to improve high-frequency resolution.

The use of newly developed loudspeaker chassis enables performance in the low and mid-frequency range to match that of the JET 5 tweeter. Ensuring excellent signal fidelity at all volume settings and an even deeper bass response were at the very top of our list of priorities – and we have achieved these. The first models in the 400 line leave no doubt that a new benchmark has been set for loudspeakers in this class!

The 400 line is a striking illustration of how design and function can be seamlessly combined. Decorative aluminium elements transform the technical components of the loudspeakers into visual highlights and the Crossbar support system fitted to the floor-standing models provides an elegant – and extremely stable – foundation.

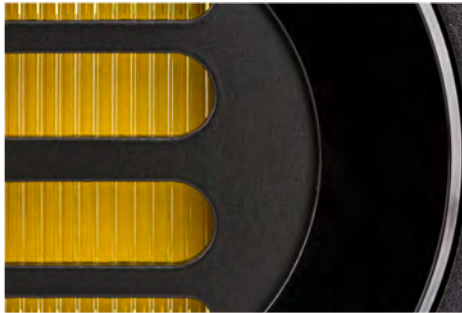
The new 400 line: Discover a new world of sound

▼ A visual and acoustic highlight – down-firing with up-lifting design.



▼ An enlarged membrane surface area, spiders vented on both sides, special cone surrounds and an aluminium chassis – the new bass drivers guarantee unprecedented performance from compact cabinets.





- ◀ *Standard with Line 400*
Single-Wiring terminal mounted on a massive aluminium plate.
- ◀ *JET 5*
The fifth-generation ELAC JET



BS 403

Although it marks the entry point into the 400 line, the compact dimensions of the BS 403 belie its exceptional capabilities. In small to medium-sized rooms, its extraordinary sound will leave even the most critical listeners enthralled!

FS 407

An elegantly proportioned floor-standing loudspeaker that is beautiful to behold. Yet the FS 407 can effortlessly recreate the sound of a concert hall, even in large rooms. The FS 407 loves music and you'll love the FS 407!



Line 300

The perfect synthesis
of the latest technology
and compact design





ELAC 330 CE

Unique looks and extraordinary sound: the ELAC 330 CE departs from the conventional straight-line design of ELAC's other loudspeakers.

The fascinating structure of the crystal membrane highlights this design feature in an appealing fashion. But the ELAC 330 CE doesn't just look good – it also sounds wonderful. It's the most visually striking member of ELAC's powerful compact models



► ELAC 330 CE on optional LS 65 II Stand





ELAC 310 CE, ELAC 310 Indies Black

Clear the ring for a little powerhouse: at 6.5 kg, the ELAC 310 CE is somewhat of a lightweight, but its powerful sound qualities make it a champion of the compact class. The ELAC 310 CE has won many honours in international title fights worldwide.

The special edition model Indies Black combines choice components and elegant style to create a sensory delight.



- ▲ Special edition model 310 Indies Black
- ▼ High Power Air Coil

- ▲ 310 CE, White High Gloss



- ◀ Bi-wiring connection
- ◀◀ Detail of speaker grille

ELAC 301.2

Probably the smallest hi-fi loudspeaker in the world. Thanks to its diminutive size, the ELAC 301.2 can easily be integrated into any living space – delivering expansive sound and unique tonal reproduction.



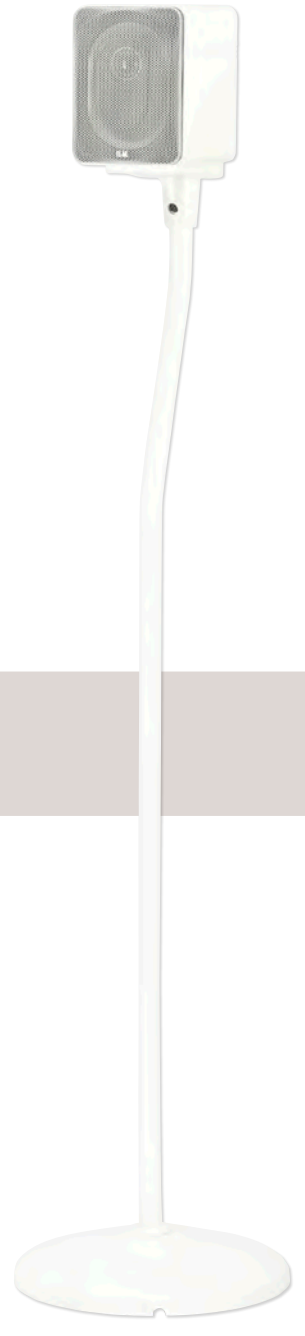
▲ Actual size



◀ Wall mount included

Optional accessories:

- ▶ Desktop Stand, Silver High Gloss
- ▶ Cinema LS Stand, White High Gloss



Line 240

Despite winning more awards than any other ELAC loudspeaker line, the Line 240 is not content to rest on its laurels.

Years after its inception, it continues to delight music lovers and home cinema fans alike and offers loudspeakers to suit every room.

This line's unique three-dimensional sound dispersion characteristics allow the room to become part of the acoustic performance ... with the listener taking centre stage.



CC 241

Be it an action film, a talk show or an opera – the CC 241 will optimize the sound of every TV and movie event.

Specially designed to reproduce voices, the CC 241 expands the range of loudspeakers optimized for music to create an all-inclusive sound that always delivers that "front-row" experience from your own home cinema.



BS 243

The BS 243 proves emphatically that the volume of sound coming from a loudspeaker is not dependent on its physical dimensions. Whether used as a front speaker or positioned discreetly as a surround speaker – the BS 243 excels in every application.

Compact doesn't get any better than this!



BS 244

A lot of physics and a little magic: Thanks to its bass driver and enlarged volume, the BS 244 is the speaker of choice when floor-standing designs are not an option. Whether placed close to a wall or in free-standing positions, the BS 244 remains unfazed and delivers a stunningly vivid sound with rich bass.



FS 247

It is the best-selling ELAC loudspeaker worldwide ... and with good reason. The linear design is a visual treat and the sound delights the ears.

Despite its compact dimensions, the FS 247 effortlessly transforms every input signal into an acoustic experience. The FS 247: Dynamic, accurate with an ability to get straight to the heart of the music!



FS 249

The FS 249 is not just the largest model, but also the crowning glory of the Line 240. Its classic 3-way design delivers an incredibly realistic listening experience. While the generous drive unit complement makes the issue of room size largely irrelevant, you'll never cease to be amazed at the three-dimensional imagery it is capable of producing. The FS 249: Immediate, powerful ... simply sublime!



Line 240 Black Edition

The style icons – introducing ELAC's ladies in black.

Their elegant black appearance lends an air of mystery to the 240 series Black Edition. Even at first glance, it's clear that these models represent a technical and acoustic evolution of the ELAC classics.



BS 243 Black Edition

Small, powerful, elegant. Designed as a bookshelf speaker, the BS 243 Black Edition mounted on a speaker stand easily competes with a full-size floor-standing loudspeaker.



CC 241 Black Edition

The matching centre speaker for the 240 Black Edition series: The CC 241 Black Edition is the ideal complement to the range for home cinema setups. Hi-fi sound for blockbuster.



BS 244 Black Edition

The powerhouse among compact speakers - with an astonishing range: powerful bass, crystal clear treble, with authentic reproduction of voices. The complete package in every respect.



Exclusive special edition of the most decorated ELAC line



High Power Air Coil

To achieve the best sound, the crossovers in all Black Edition models are equipped with high grade components, such as extra-large air coils.



FS 247 Black Edition

The original member of the Black Edition family – this slim floor-stander will fit seamlessly and unobtrusively into your living room. Easy living with ELAC quality. With even more focused bass and lighter treble, the FS 247 Black Edition benefits from its virtually loss-free crossover.



FS 248 Black Edition

A loudspeaker that appears to have stepped out of the New York skyline: black, tall and extremely slim. The FS 248 is the skyscraper of the line, both visually and acoustically. Delivering a transparent sound, this speaker offers greater treble presence than any other speaker in the range. It's the perfect performer.



FS 249 Black Edition

The top model among these "black beauties", it outperforms all the other loudspeakers in this line. Designed for those who feel that impressive hi-fi quality should be seen as well as heard. Thanks to its dimensions and special internal structure, the FS 249 Black Edition has sufficient volume to fill even larger rooms with sound.



Line 190

With the 190 line, the entry point into the world of the JET tweeter is gaining a new name ... and a new face.

Whether in black or white, the high-quality silk matte lacquer finish highlights the 190 line's contemporary style. But it's the drive units up front that reveal its true character. Black anodized aluminium membranes and matching colored JET tweeters leave no doubt as to the ultimate purpose of these beautifully designed loudspeakers: to deliver perfect sound!

The accompanying accessories make it easy to integrate this exceptional sound into any domestic setting: Every speaker in the 190 line is supplied with a cloth baffle cover and a metal grille. Whether you prefer a striking look or cool understatement – with the 190 line, the choice is yours.

The 190 line is designed for those who seek uncompromising audio quality. Once again, our world-renowned JET tweeter demonstrates in impressive style its effortless mastery of even the most complex audio signals. It is one of the few tweeters also capable of reproducing frequencies far above the upper limit of human hearing, which can significantly influence the audible sound.

Aluminium sandwich: the combination of two different materials used to create the woofer membranes. It guarantees accurate reproduction of sounds you want to feel as well as hear. In the compact cabinets of the 190 line, they lay the foundation for superior sound ... with deep bass.

Highly ambitious and with enormous potential – the 190 line is poised for a grand finale ... at home with you.

The Line 190: READY ... JET ... GO!

▼ *Black magic: Anodized aluminium-sandwich membranes not only look good, they also deliver exceptional sound.*



▼ *Hitting new lows – the down-firing system in the BS 192 and FS 197.*





BS 192

Audio addiction or a work of art: The BS 192 masterfully combines of appealing design and stunning sound quality. It excels in small and medium-sized rooms, either on a sideboard or in free-standing positions.



CC 191

Surround sound, the right way: Thanks to its JET tweeter and powerful woofer, the CC 191 creates a powerful sound stage even in large rooms, while remaining visually unobtrusive.



FS 197

It can and it will: The FS 197 captivates the listener in seconds, whether used in two-channel stereo or surround sound configurations! It does not shy away from loud volumes and can handle thundering crescendos or reveal the subtlest nuances with consummate ease.

Line 60.2

Irresistibly minimalist design – the 60.2 line looks as good as it sounds!



Configuration levels:

- ▲ Subwoofer SUB 2030
- ▼ In-wall loudspeaker IW 1130



CC 61.2

Sound, music and dialog – those who aspire to cinema quality sound at home need a loudspeaker system that is convincing with the human voice as well. Thanks to the CC 61.2, this applies unreservedly to the 60.2 line.



BS 62.2

All the world's a stage – unfortunately, not many loudspeakers manage to show it. ELAC loudspeakers have no difficulties in this respect. The BS 63.2 and BS 62.2 actually manage to sound even bigger than they are. With heights of 33 and 26 cm respectively, they look small, but put on a big performance.

BS 63.2 FS 67.2

The 2½-way FS 67.2 loudspeaker impresses thanks to its natural music reproduction and elegant appearance. It is also perfectly at home even when positioned close to a wall.

FS 68.2

The floor-standing FS 68.2 is an impressive three-way loudspeaker from the 60.2 line. The powerhouse of the 60.2 family easily fills large rooms with clear sound.



Line 50.2

Top quality at a modest price
– clean contemporary design
with silk matt painted front



▼ *The SUB 2030 provides for deep,
dry bass tones*



CC 51.2

Those who opt for the 50.2 line need not compromise when it comes to home cinema sound. The CC 51.2 is a centre speaker completely in tune with the philosophy of the line: small, smart and affordable.



BS 52.2

Think you have no space for loudspeakers? Think again. With the BS 53.2, ELAC offers a compact solution that will get even the smallest room rocking. And those who want something even smaller will simply adore the BS 52.2. Its small size makes it the ultimate shelf loudspeaker.

BS 53.2

FS 57.2

Slimmer but no less attractive in terms of sound and price, the FS 57.2 is the speaker to make cost-conscious sound lovers prick up their ears. An audio delight for the home.

FS 58.2

“Music box” or front loudspeaker with a licence to thrill. The FS 58.2 is the high-performance heart of hi-fi and home cinema systems. Its striking membranes are a real design highlight.

Cinema

For those who love the silver screen.



Starlet

Starlet CM

Hollywood without starlets? Unthinkable. Home cinema without Starlets? Conceivable, but what a loss! Despite their smaller dimensions, Starlet speakers with the matching Starlet centre speakers ensure a resounding presentation for every great film, particularly when combined with ELAC subwoofers.



▲ Cinema CM 24, can be placed on any flat surface or mounted horizontally on the wall



▲ Cinema CM 24 mounted vertically on a wall

▲ Cinema Pipe with glass design base

Cinema 2 SAT

Satellite for orbital positions: surround systems conquer space in all its dimensions with the Cinema 2 SAT. With an ELAC subwoofer and the wide-dispersion Cinema XL Center at the heart of the home cinema galaxy, the Cinema 2 SAT turns viewers into space travellers. Available in silver or black anodized aluminium cabinets, this satellite system also looks the part.

Cinema XL Center

Cinema CM 24

The *magic flute* of ELAC loudspeakers: the Cinema Pipe with its slender, upright form demonstrates pure elegance, designed for equally elegant flat screens. It is a loudspeaker which gives free reign to Mozart's *Queen of the Night* even at her very highest notes.

Cinema Pipe

Loudspeaker Sets

2.1 Stereo Sets



2.1 Anniversary Set
SUB 2060 D and two ELAC 301.2.



2.1 Set 2030 / 301.2
SUB 2030 and two ELAC 301.2.



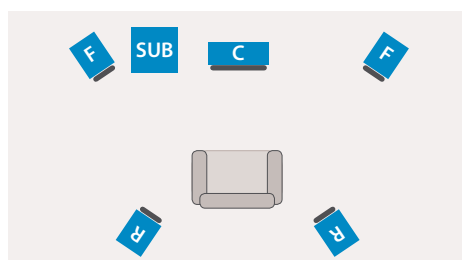
2.1 MicroMagic
MicroSUB 2010.2 and two ELAC 301.2.



2.1 Set 111.2 / 301.2
SUB 111.2 ESP and two ELAC 301.2.

Custom Sets

Tip: Customize your



Graphics: 5.1 Set individually
Subwoofer + Center + Front + Rear.

No two auditioning rooms are the same. For this reason, ELAC's surround sets also allow you to customize your setup using individual components from the respective line.

The centre speaker is the heart of a quality surround-sound setup. Bookshelf or floor-standing loudspeakers provide perfect support. A subwoofer adds low-end power to complete the setup.

5.1 Surround Sets



5.1 Set 2060 D / 301.2
SUB 2060 D and five ELAC 301.2.



5.1 Set 2030 / 301.2
SUB 2030 and five ELAC 301.2.



5.0 Set 301.2
Five ELAC 301.2.



5.1 SUB 2040 / 301.2
SUB 2040 ESP and five ELAC 301.2.



5.1 Cinema 2040 XL III
SUB 111.2 ESP, Cinema XL Center and four Cinema 2 SAT.



5.1 Starlet
SUB 111.2 ESP, Starlet CM and four Starlet.



5.1 CINEMA 3 ESP V
SUB 111.2 ESP and five ELAC 301.2.

stereo or surround set !



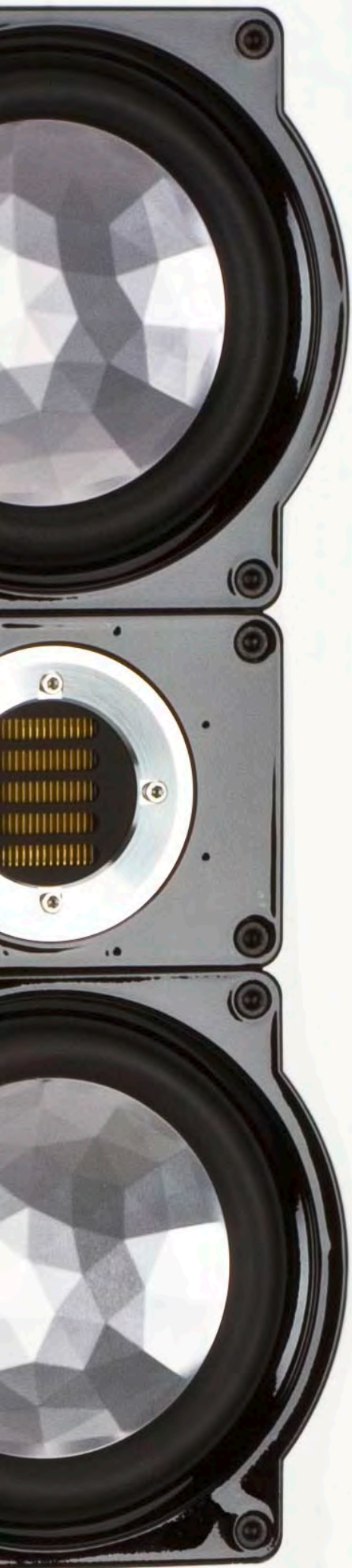
5.1 Set, Line 240 Black Edition
SUB 2060 D, CC 241 BE, two BS 243 BE, two FS 247 BE.



5.1 Set, Line 240, special paint finish (at additional cost)
SUB 2060 D, CC 241, two BS 243, two FS 247.



5.1 Set, Line 60.2, walnut
SUB 111.2 ESP, CC 61.2, two BS 63.2, two FS 67.2.



Exclusive

Line 140

Music makes us feel truly alive; brings back memories; inspires and exhilarates us; comforts and relaxes us.

We understand that and we feel the same way, which is why we build loudspeakers for aficionados, like the Line 140. Outwardly unobtrusive with a timeless design, but packed with the finest technology that ELAC has to offer. Vast dynamic reserves enable the JET tweeter to reproduce every last detail, even those outside the audible range. The aluminium sandwich woofers provide the requisite deep bass, ensuring a lifelike delivery that's not just confined to live recordings.



BS 142

In small and medium-sized rooms, the BS 142 is the perfect partner for recreating a wealth of detail and a three-dimensional sound stage, especially when placed on stands. The perfect choice for memorable ELAC moments spent with your favourite music.



FS 147

Top-quality technology elegantly attired: Despite its slim design, this 2 ½-way loudspeaker offers astounding dynamics. The FS 147 can switch from driving pop and rock tracks to gentle chamber music with consummate ease.



(FS 217, Line 250)



FS 217

◀ Clean lines and sharp angle always catch the eye. Here, they combine beautifully to create something truly unique – a Special Edition.

Line 250

▶ The Line 250 creates a striking impression. Whether in black or white, these loudspeakers are always a visual treat. The elegant design is complemented by an extremely neutral tonal balance that is virtually unmatched thanks to exclusive ELAC technologies.



FS 217

With a design that holds the attention, FS 217 follows its own path with an elegant shape that really stands out from the crowd. It does so with the help of gently curved contours and white silk matte lacquer finish.

Created to make music, the FS 217 reveals its talents to wonderful effect even in large rooms. For all its precision, the most striking aspect of the resulting sound is its musicality. The FS 217 also sheds light on the smallest details but without losing sight of how they relate to the music.

BS 253

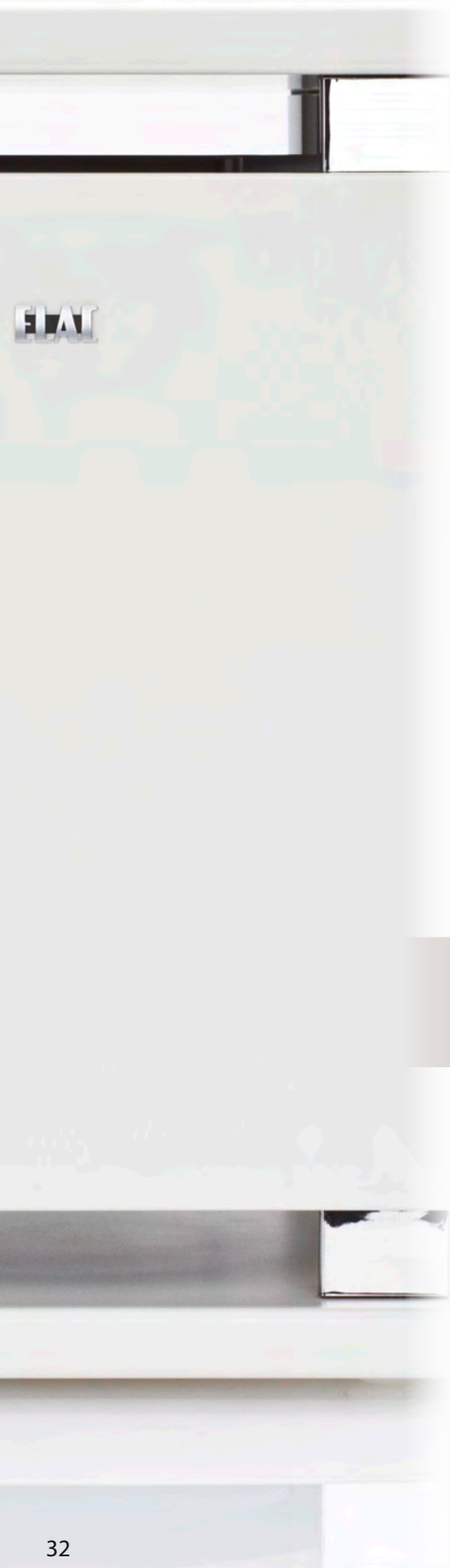
A bookshelf loudspeaker that you'll want to show off: The BS 253 is the compact speaker that's hard to ignore.

FS 257

With not a hint of blurred tonal shading, this floor-standing speaker delivers a finely-etched sound that is natural, open and easy-going.

Despite its slender dimensions, the speaker's bass response recreates the power of a classical orchestra or a rock concert with equal impact in your living room.

Subwoofers



MicroSUB 2010.2

The MicroSUB 2010.2 demonstrates in impressive style that sound quality doesn't necessarily depend on the physical size of the audio source. It reproduces room-shaking bass with incredible lightness and precision. Thanks to the built-in multi-channel amplifier, the MicroSUB 2010.2 also powers two connected satellite speakers. In this configuration, it creates a 2.1 system with excellent sound quality.

SUB 111.2 ESP

The workhorse of the ELAC subwoofers: extremely versatile and equipped with ESP technology to protect against overloading, the SUB 111.2 ESP provides loyal and reliable service. Recommended as bass reinforcement for the 60.2, 50.2 and Cinema lines, the SUB 111.2 ESP has proven its value for many years as a popular entry-level model of the ELAC subwoofer range.



(MicroSub 2010.2, SUB 2060 D)



SUB 2030

Deep and dry, this is the sound of the SUB 2030 – just as it should be from a closed box subwoofer with a 25 cm driver. Particularly recommended for 180, 60.2, 50.2 and Cinema loudspeakers.

SUB 2040 ESP

The SUB 2040 ESP vibrates the air, not the cabinet. The sound of the SUB 2040 ESP can be adjusted to suit the most varied physical surroundings. It is best combined with the 180 and 240 line loudspeakers. A real bass player.

SUB 2060 D

Those who want their 300 or 240 line loudspeakers to deliver more "oomph" should look no further than the SUB 2060 D. Strikingly slim and elegant on the outside, its "inner strength" delivers astonishing power along with unprecedented precision. An attractive subwoofer that offers more than just deep bass.

Active Loudspeakers



▲ AM 50 Slave

AM 50 Master ▲

AM 50

The AM 50 stereo set is a delightful proposition from every perspective. The first thing you notice is the matt lacquered cabinets. Combined with the metal grille and black drive units, the AM 50 is a visual delight whether on a sideboard, beside the TV or on your desk.



AM 150

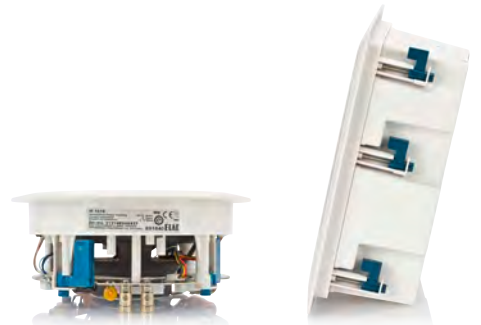
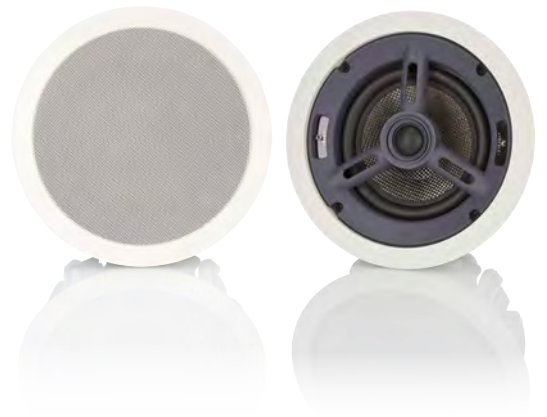
The unbeatable all-rounder: whether connected by a computer, used as a near field monitor or as part of a hi-fi system, versatility is what the AM 150 is all about.

Numerous control options, extensive sound adjustments and amazing value for money push the AM 150 to the top of its class.

AM 180

You're just one connection away from audio nirvana. The AM 180 is fully equipped to deliver an impressive listening experience. The aluminium sandwich woofer forms a perfect partnership with the JET tweeter. With help of sophisticated electronics, this small loudspeaker sounds like a much larger one.

Custom Install



- ▲ BS 52.2, Rear panel with terminal and lug for wall-mounting
- ▼ BS 52.2, compact loudspeakers perfect for extension. Film lovers adore it.

- ▲ IC 1010
- IW 1130, IW 1230 ▲

Side view of in-wall loudspeaker.

IC 1010

It feels like the walls themselves are singing with ELAC's custom install loudspeakers. They can be discreetly integrated in room walls or ceilings - unseen, but not unheard.

The smallest of its kind at ELAC, the IC 1010 performs to hi-fi standards, creating a sound that appears to come from nowhere.



The (almost) invisible speakers



▲ Plaster frame for installation of in-wall loudspeakers in solid walls

▲ Flush-mounting frame – wooden frame for installing in-wall loudspeakers

▲ Back with terminal and four wall-mounting lugs

▲ With metal grille

IW 1130

Looking to expand the team? The IW 1130 and IW 1230 are the ideal audio additions to any home cinema system. The IW 1130 reinforces the 60.2 line. The IW 1230 matches well with the 180, 240 and 300 lines.

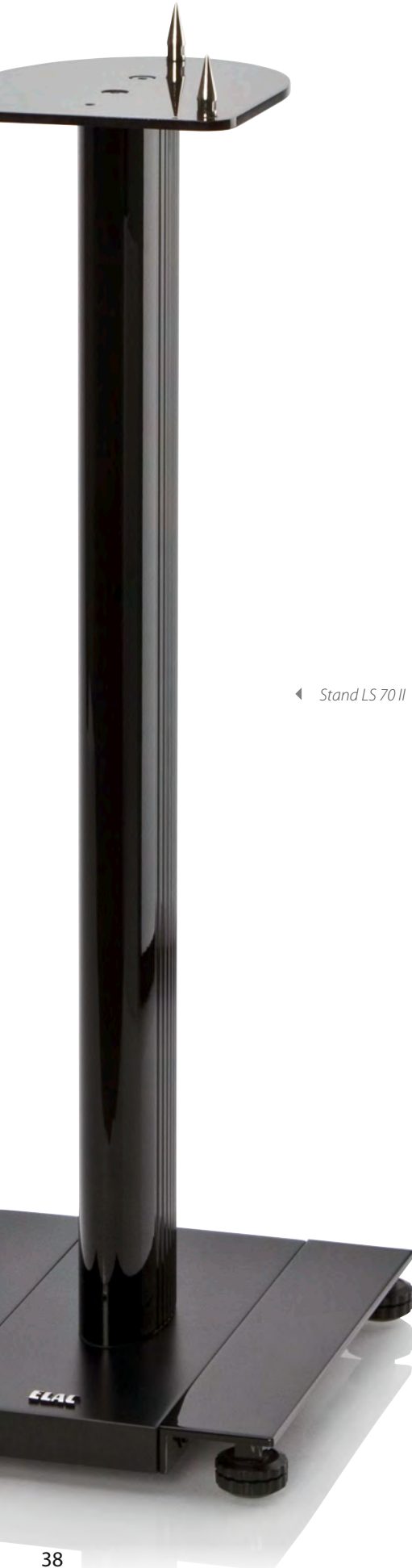
IW 1230

WS 1135

Whether hanging on the wall, sitting upright on a shelf or horizontally on their side, the WS 1135 and WS 1235 sound excellent in every location. These wall loudspeakers are also ideal team players. The WS 1135 is acoustically adapted to the 60.2 line and the WS 1235 to the 180, 240 and 300 lines.

WS 1235

Accessories



Speaker stand LS 65.2

High Gloss Black

Can be used with the ELAC 330 CE

Height (incl. 30 mm for the spikes): 718 mm

Base W x D: 290 x 325 mm



Speaker stand LS 70 II

High Gloss: White, Titanium, Black

Can be used with: ELAC 310 CE, ELAC 310 IB, BS 243, BS 244 and other compact loudspeakers

Height incl. Spikes: 726 mm

Base W x D: 240 x 290 mm

◀ *Stand LS 70 II*



Speaker stand Cinema LS stand

High Gloss Black, High Gloss White, Silver finish

Can be used with: ELAC 301. 2, Starlet and Cinema 2 SAT



Wall mount 310

High Gloss: White, Titanium, Black

Can be used with: ELAC 310 CE, ELAC 310 IB



Ultimate Spike Set

Metal, High Gloss Chrome

Thread: M8

Can be used with: 200, 240, 300, 400, 500 and 600 lines

4Pi Plus.2



The 4Pi Plus.2 additional tweeter is the ideal add-on feature for any of ELAC's high-quality floor-standing loudspeakers.

It opens up the sound of the loudspeakers to fill the entire room. As a result, you can virtually bathe in the music, it surrounds you so.



The problem-solvers



◀ Bi-wire jumper set

High-quality bi-wiring jumper set, consisting of four «Van den Hul M.C., The Wind MK II, Halogen free» cables with gold-plated cable terminals.



D/A converter, optical, stereo ▶

For connecting active loudspeakers, preamplifiers (or integrated amplifiers) without optical digital input to sources with only optical digital output, e.g. TFT flat screen TV's.



◀ Ground loop isolator

The solution to hum pickups (e.g. with some notebooks near active loudspeakers) for galvanic decoupling of input and output signal by transformers. No loss in level. For direct looping into an existing RCA connection.



ELAC Wireless Set Stereo ▶

The Audio signal is transmitted losslessly (CD quality) from the transmitter to the receiver. Plug & Play through the accessory kit.

Technical Specifications



	FS 609 CE	4Pi Plus.2
Height x Width x Depth	1,305 x 319 x 354 mm	143 x 150 x 250 mm
Weight	46 kg	4 kg
Type	4 ½-Way, bass reflex	Add-on tweeter
Woofer	3 x 180 mm, AS-XR cone, LLD	–
Midrange	1 x 105/50 mm, AS-XR ring radiator	–
Tweeter	JET III, 4Pi II	4Pi II
Magnetic shielding	–	–
Crossover frequency	150 550 2,500 (6,000) Hz	10,000 12,000 15,000 Hz
Frequency range (IEC 268-5)	25 to 53,000 Hz	10,000 to 50,000 Hz
Sensitivity	89 dB at 2.83 V/m	84 to 92 dB at 2.83 V/m
Suitable for amplifiers from ... to	4 - 8 Ω	4 - 8 Ω
Recommended amplifier power	80 - 500 W/channel	20 - 400 W/channel
Nominal Peak power handling	250 W 300 W	400 W 600 W
Nominal Minimum impedance	4 Ω 3.6 Ω at 29 Hz	6 Ω 3.5 Ω at >10,000 Hz
Finishes	Black High Gloss, Titan Shadow	Black High Gloss, Titan Shadow
Accessories included in delivery:	Bass Control 60 mm Ø, metal grille	
	330 CE	301.2
Height x Width x Depth	274 x 188 x 345 mm	121 x 91 x 136 mm
Weight	10.5 kg	ca. 1.5 kg
Type	2-Way, bass reflex	2-Way, closed box
Woofer	1 x 180 mm, AS-XR cone, LLD	78 x 108 mm Ø, AS oval
Midrange	–	–
Tweeter	JET III	silk dome, 20 mm
Magnetic shielding	–	Yes
Crossover frequency	2,900 Hz	80 2,390 Hz
Frequency range (IEC 268-5)	40 to 50,000 Hz	80 to 35,000 Hz
Sensitivity	87.5 dB at 2.83 V/m	86 dB at 2.83 V/m
Suitable for amplifiers from ... to	4 - 8 Ω	4 - 8 Ω
Recommended amplifier power	30 - 200 W/channel	20 - 120 W/channel
Nominal Peak power handling	80 W 120 W	60 W 75 W
Nominal Minimum impedance	4 Ω 3.8 Ω at 195 Hz	4 Ω 3.5 Ω at 1,200 Hz
Finishes	Black High Gloss	Black, Silver and White High Gloss
Accessories included in delivery:	Vario BC 70 mm Ø, metal grille, JET DC	Wall bracket, metal grille



White High Gloss



Silver High Gloss (ELAC 301.2)



Black High Gloss

FS 509 VX-JET

1,373 x 330 x 466 mm
 57.2 kg
 4-Way, bass reflex
 2 x 220 mm Ø, AS-XR cone
 1 x 180 mm Ø, AS-XR cone, LLD
 1 x 50 mm / 105 mm Ø, AS-XR ring radiator
 JET 5
 –
 120 | 600 | 2,800 Hz
 24 bis 50,000 Hz
 89 dB at 2.83 V/m
 4 - 8 Ω
 80 - 600 W/channel
 280 W | 350 W
 4 Ω | 3.1 Ω at 75 Hz
 Black, High Gloss;
 Tobacco, High Gloss;
 Walnut, Veneer, High Gloss
 metal grille,
 bi-wiring set

FS 507 VX-JET

1,198 x 280 x 413 mm
 37 kg
 3½-Way, bass reflex
 2 x 180 mm Ø, AS-XR cone
 1 x 50 mm | 105 mm Ø, AS-XR ring radiator
 JET 5
 –
 180 | 550 | 2,700 Hz
 26 bis 50,000 Hz
 88.5 dB at 2.83 V/m
 4 - 8 Ω
 60 - 500 W/channel
 220 W | 300 W
 4 Ω | 3.5 Ω at 95 Hz
 Black, High Gloss;
 Tobacco, High Gloss;
 Walnut, Veneer, High Gloss
 metal grille,
 bi-wiring set

CC 501 VX-JET

293 x 940 x 413 mm
 36.5 kg
 3-Way, bass reflex
 2 x 180 mm Ø, AS-XR cone
 1 x 50 mm | 105 mm Ø, AS-XR ring radiator
 JET 5
 Yes
 550 | 2,700 Hz
 29 bis 50,000 Hz
 89 dB at 2.83 V/m
 4 - 8 Ω
 60 - 500 W/channel
 220 W | 300 W
 4 Ω | 3.5 Ω at 105 Hz
 Black, High Gloss;
 Tobacco, High Gloss;
 Walnut, Veneer, High Gloss
 metal grille,
 bi-wiring set

310 CE

208 x 123 x 282 mm
 6.5 kg
 2-Way, bass reflex
 1 x 115 mm, AS-XR cone
 –
 JET III
 –
 3,200 Hz
 42 to 50,000 Hz
 86 dB at 2.83 V/m
 4 Ω
 50 - 150 W/channel
 70 W | 90 W
 4 Ω | 3.4 Ω at 280 Hz
 Black and White High Gloss,
 Titan Shadow
 metal grille, JET DC

310 IB

208 x 123 x 282 mm
 6.6 kg
 2-Way, bass reflex
 1 x 115 mm, AS-XR cone
 –
 JET III
 –
 3,200 Hz
 42 to 50,000 Hz
 86 dB at 2.83 V/m
 4 Ω
 50 - 150 W/channel
 70 W | 90 W
 4 Ω | 3.4 Ω at 280 Hz
 Black High Gloss
 metal grille, JET DC

FS 249

1,147 x 260 x 368 mm
 27.2 kg
 3-Way, bass reflex
 2 x 180 mm, AS-XR cone
 1 x 140 mm, AS-XR cone
 JET III
 –
 500 | 3,000 Hz
 28 to 50,000 Hz
 90 dB / 2.83 V/m
 4 - 8 Ω
 30 - 400 W/channel
 200 W | 250 W
 4 Ω | 3.0 Ω at 120 Hz
 Black and White High Gloss
 Bass Control 60 mm Ø,
 fabric grille, JET DC

FS 247

1,021 x 220 x 320 mm
 16.8 kg
 2 ½-Way, bass reflex
 2 x 150 mm, AS-XR cone
 JET III
 –
 450 | 2,500 Hz
 30 to 50,000 Hz
 89 dB at 2.83 V/m
 4 - 8 Ω
 30 - 250 W/channel
 120 W | 160 W
 4 Ω | 3.4 Ω at 210 Hz
 Black and White High Gloss,
 Bass Control 60 mm Ø,
 fabric grille, JET DC

BS 244

330 x 200 x 282 mm
 7.4 kg
 2-Way, bass reflex
 1 x 180 mm, AS-XR cone
 –
 JET III
 –
 2,600 Hz
 38 to 50,000 Hz
 88 dB at 2.83 V/m
 4 - 8 Ω
 30 - 200 W/channel
 80 W | 120 W
 4 Ω | 3.5 Ω at 190 Hz
 Black and White High Gloss
 Vario BC 70 mm Ø,
 fabric grille, JET DC

BS 243

285 x 170 x 232 mm
 5.2 kg
 2-Way, bass reflex
 1 x 150 mm, AS-XR cone
 –
 JET III
 –
 2,700 Hz
 41 to 50,000 Hz
 87 dB at 2.83 V/m
 4 - 8 Ω
 30 - 150 W/channel
 60 W | 80 W
 4 Ω | 3.6 Ω at 240 Hz
 Black and White High Gloss
 Vario BC 55 mm Ø,
 fabric grille, JET DC

CC 241

170 x 430 x 350 mm
 9.4 kg
 2 ½-Way, bass reflex
 2 x 150 mm, AS-XR cone
 –
 JET III
 Yes
 450 | 2,600 Hz
 34 to 50,000 Hz
 89 dB at 2.83 V/m
 4 - 8 Ω
 30 - 200 W/channel
 110 W | 140 W
 4 Ω | 3.6 Ω at 190 Hz
 Black and White High Gloss,
 Vario BC 70 mm Ø,
 fabric grille, JET DC



Titan Shadow High Gloss (Line 600, 330 CE, 310 CE, SUB 2060 D)



Silk Matt White (Line 190, FS 217, AM 150, SUB 2030, SUB 2040 ESP, SUB 111.2 ESP)



Silk Matt Black (AM 150; SUB 2030, SUB 111.2 ESP)

FS 249 BE

Height x Width x Depth	1.147 x 260 x 368 mm
Weight	28,7 kg
Type	3-Way, bass reflex
Woofer	2 x 180 mm, AS-XR cone
Midrange	1 x 140 mm, AS-XR cone
Tweeter	JET III
Magnetic shielding	–
Crossover frequency	500 3.000 Hz
Frequency range (IEC 268-5)	28 to 50.000 Hz
Sensitivity	90 dB at 2,83 V/m
Suitable for amplifiers from ... to	4 - 8 Ω
Recommended amplifier power	30 - 400 W/channel
Nominal Peak power handling	200 W 250 W
Nominal Minimum impedance	4 Ω 3,0 Ω at 120 Hz
Finishes	Black High Gloss
Accessories included in delivery:	Bass Control 60 mm Ø, fabric grille, JET DC

FS 248 BE

Height x Width x Depth	1.173 x 230 x 368 mm
Weight	24,3 kg
Type	3 ½-Way, bass reflex
Woofer	3 x 150 mm, AS-XR cone
Midrange	1 x 140 mm, AS-XR cone
Tweeter	JET III
Magnetic shielding	–
Crossover frequency	180 450 2.900 Hz
Frequency range (IEC 268-5)	30 to 50.000 Hz
Sensitivity	89,5 dB at 2,83 V/m
Suitable for amplifiers from ... to	4 - 8 Ω
Recommended amplifier power	30 - 300 W/channel
Nominal Peak power handling	150 W 220 W
Nominal Minimum impedance	4 Ω 3,9 Ω at 110 Hz
Finishes	Black High Gloss
Accessories included in delivery:	Bass Control 60 mm Ø, fabric grille, JET DC

FS 247 BE

Height x Width x Depth	1.021 x 220 x 320 mm
Weight	17,8 kg
Type	2 ½-Way, bass reflex
Woofer	2 x 150 mm, AS-XR cone
Midrange	(150 mm)
Tweeter	JET III
Magnetic shielding	–
Crossover frequency	450 2.500 Hz
Frequency range (IEC 268-5)	30 to 50.000 Hz
Sensitivity	89 dB at 2,83 V/m
Suitable for amplifiers from ... to	4 - 8 Ω
Recommended amplifier power	30 - 250 W/channel
Nominal Peak power handling	120 W 160 W
Nominal Minimum impedance	4 Ω 3,4 Ω at 210 Hz
Finishes	Black High Gloss
Accessories included in delivery:	Bass Control 60 mm Ø, fabric grille, JET DC

BS 244 BE

Height x Width x Depth	330 x 200 x 282 mm
Weight	7,9 kg
Type	2-Way, bass reflex
Woofer	1 x 180 mm, AS-XR cone
Midrange	–
Tweeter	JET III
Magnetic shielding	–
Crossover frequency	2.600 Hz
Frequency range (IEC 268-5)	38 to 50.000 Hz
Sensitivity	88 dB at 2,83 V/m
Suitable for amplifiers from ... to	4 - 8 Ω
Recommended amplifier power	30 - 200 W/channel
Nominal Peak power handling	80 W 120 W
Nominal Minimum impedance	4 Ω 3,5 Ω at 190 Hz
Finishes	Black High Gloss
Accessories included in delivery:	Vario BC 70 mm Ø, fabric grille, JET DC

BS 243 BE

Height x Width x Depth	285 x 170 x 232 mm
Weight	5,7 kg
Type	2-Way, bass reflex
Woofer	1 x 150 mm, AS-XR cone
Midrange	–
Tweeter	JET III
Magnetic shielding	–
Crossover frequency	2,700 Hz
Frequency range (IEC 268-5)	41 to 50,000 Hz
Sensitivity	87 dB at 2.83 V/m
Suitable for amplifiers from ... to	4 - 8 Ω
Recommended amplifier power	30 - 150 W/channel
Nominal Peak power handling	60 W 80 W
Nominal Minimum impedance	4 Ω 3.6 Ω at 240 Hz
Finishes	Black High Gloss
Accessories included in delivery:	Vario BC 55 mm Ø, fabric grille, JET DC

CC 241 BE

Height x Width x Depth	170 x 430 x 350 mm
Weight	10,4 kg
Type	2 ½-Way, bass reflex
Woofer	2 x 150 mm, AS-XR cone
Midrange	–
Tweeter	JET III
Magnetic shielding	Yes
Crossover frequency	450 2,600 Hz
Frequency range (IEC 268-5)	34 to 50,000 Hz
Sensitivity	89 dB at 2.83 V/m
Suitable for amplifiers from ... to	4 - 8 Ω
Recommended amplifier power	30 - 200 W/channel
Nominal Peak power handling	110 W 140 W
Nominal Minimum impedance	4 Ω 3.6 Ω at 190 Hz
Finishes	Black High Gloss
Accessories included in delivery:	Vario BC 70 mm Ø, fabric grille, JET DC

FS 257

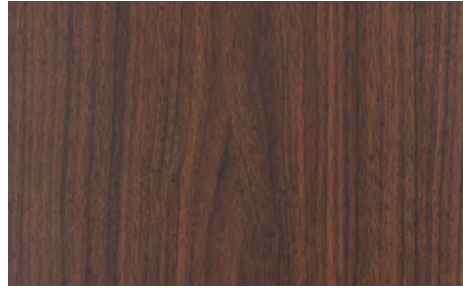
Height x Width x Depth	989 x 220 x 320 mm
Weight	17,4 kg
Type	2 1/2-Way, bass reflex
Woofer	2x 150 mm., AS-XR cone
Midrange	–
Tweeter	JET III
Magnetic shielding	–
Crossover frequency	700 3,200 Hz
Frequency range (IEC 268-5)	33 to 50,000 Hz
Sensitivity	88 dB at 2.8 V/m
Suitable for amplifiers from ... to	4 - 8 Ω
Recommended amplifier power	30 -250 W/channel
Nominal Peak power handling	120 W 160 W
Nominal Minimum impedance	4 Ω 3.1 Ω at 230 Hz
Finishes	Black and White High Gloss
Accessories included in delivery:	M6-Spike; magn. fixed fabric grille

BS 253

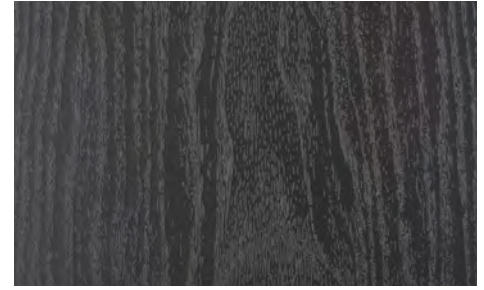
Height x Width x Depth	285 x 170 x 232 mm
Weight	5,3 kg
Type	2-Way, bass reflex
Woofer	150 mm., AS-XR cone
Midrange	–
Tweeter	JET III
Magnetic shielding	–
Crossover frequency	2.900 Hz
Frequency range (IEC 268-5)	42 to 50,000 Hz
Sensitivity	87 dB at 2.8 V/m
Suitable for amplifiers from ... to	4 - 8 Ω
Recommended amplifier power	30 -150 W/channel
Nominal Peak power handling	60 W 80 W
Nominal Minimum impedance	4 Ω 3.4 Ω at 240 Hz
Finishes	Black and White High Gloss
Accessories included in delivery:	felt pads; magn. fixed fabric grille



Dark Cherry (Line 50.2)



Walnut (Line 60.2)



Black Ash (Line 60.2; Linie 50.2)

FS 68.2

1,080 x 250 x 335 mm
 20 kg
 3-Way, bass reflex
 2 x 175 mm, AS cone
 1 x 140 mm, AS cone
 1 x 25 mm, silk dome
 Yes
 600 | 2,200 Hz
 38 to 25,000 Hz
 89 dB at 2.83 V/m
 4 - 8 Ω
 20 - 180 W/channel
 110 W | 150 W
 6 Ω | 4.6 Ω at 135 Hz
 Walnut and Ash Black
 Vario BC 70 mm Ø,
 magn. fixed fabric grille

FS 67.2

950 x 220 x 300 mm
 14.5 kg
 2 ½-Way, bass reflex
 2 x 140 mm, AS cone
 1 x 25 mm, silk dome
 Yes
 500 | 2,200 Hz
 38 to 25,000 Hz
 88 dB at 2.83 V/m
 4 - 8 Ω
 20 - 150 W/channel
 80 W | 120 W
 6 Ω | 5.2 Ω at 220 Hz
 Walnut and Ash Black
 Vario BC 70 mm Ø,
 magn. fixed fabric grille

BS 63.2

330 x 205 x 265 mm
 7 kg
 2-Way, bass reflex
 1 x 175 mm, AS cone
 –
 1 x 25 mm, silk dome
 –
 2,300 Hz
 44 to 25,000 Hz
 88 dB at 2.83 V/m
 4 - 8 Ω
 20 - 120 W/channel
 60 W | 80 W
 6 Ω | 4.9 Ω at 240 Hz
 Walnut and Ash Black
 Vario BC 70 mm Ø,
 magn. fixed fabric grille

BS 62.2

260 x 160 x 262 mm
 4.5 kg
 2-Way, bass reflex
 1 x 135 mm, AS cone
 –
 1 x 25 mm, silk dome
 –
 2,300 Hz
 48 to 25,000 Hz
 86.5 dB at 2.83 V/m
 4 - 8 Ω
 20 - 120 W/channel
 50 W | 70 W
 6 Ω | 4.6 Ω at 260 Hz
 Walnut and Ash Black
 Vario BC 55 mm Ø,
 magn. fixed fabric grille

CC 61.2

170 x 435 x 265 mm
 7.5 kg
 2-Way, bass reflex
 2 x 140 mm, AS cone
 –
 1 x 25 mm, silk dome
 Yes
 2,100 Hz
 48 to 25,000 Hz
 88.5 dB at 2.83 V/m
 4 - 8 Ω
 20 - 150 W/channel
 80 W | 120 W
 6 Ω | 4.8 Ω at 230 Hz
 Walnut and Ash Black
 Vario BC 55 mm Ø,
 magn. fixed fabric grille

FS 58.2

1,070 x 250 x 335 mm
 20 kg
 3-Way, bass reflex
 2 x 175 mm, cone
 1 x 145 mm, cone
 1 x 25 mm, silk dome
 –
 600 / 2,400 Hz
 38 to 25,000 Hz
 90 dB at 2.83 V/m
 4 - 8 Ω
 20 - 180 W/channel
 100 W | 140 W
 4 Ω | 3.2 Ω at 130 Hz
 Ash Black and Dark Cherry
 Vario BC 70 mm Ø,
 metal grille

FS 57.2

940 x 200 x 300 mm
 14 kg
 2 ½-Way, bass reflex
 2 x 145 mm, cone
 –
 1 x 25 mm, silk dome
 –
 700 | 2,000 Hz
 38 to 25,000 Hz
 89 dB at 2.83 V/m
 4 - 8 Ω
 20 - 150 W/channel
 80 W | 120 W
 4 Ω | 3.6 Ω at 205 Hz
 Ash Black and Dark Cherry
 Vario BC 70 mm Ø,
 metal grille

BS 53.2

285 x 170 x 235 mm
 5.5 kg
 2-Way, bass reflex
 1 x 145 mm, cone
 –
 1 x 25 mm, silk dome
 –
 2,200 Hz
 46 to 25,000 Hz
 87 dB at 2.83 V/m
 4 - 8 Ω
 20 - 120 W/channel
 50 W | 70 W
 4 Ω | 3.7 Ω at 210 Hz
 Ash Black and Dark Cherry
 Vario BC 55 mm Ø,
 metal grille

BS 52.2

210 x 136 x 165 mm
 2.4 kg
 2-Way, closed
 1 x 110 mm, cone
 –
 1 x 25 mm, silk dome
 –
 2,500 Hz
 65 to 25,000 Hz
 84 dB at 2.83 V/m
 4 - 8 Ω
 20 - 120 W/channel
 40 W | 60 W
 6 Ω | 4.8 Ω at 240 Hz
 Ash Black and Dark Cherry,
 Silk Matt White
 Vario BC 55 mm Ø,
 metal grille

CC 51.2

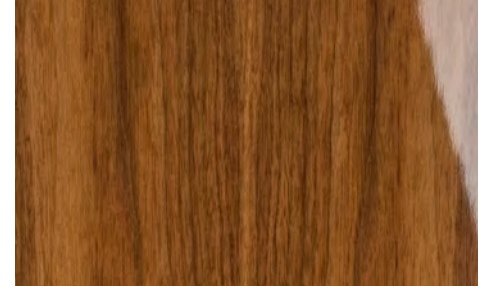
160 x 445 x 280 mm
 7 kg
 2-Way, bass reflex
 2 x 140 mm, cone,
 –
 1 x 25 mm, silk dome
 –
 2,200 Hz
 44 to 25,000 Hz
 89 dB at 2.83 V/m
 4 - 8 Ω
 20 - 150 W/channel
 70 W | 110 W
 4 Ω | 3.5 Ω at 200 Hz
 Ash Black and Dark Cherry
 metal grille



Arctic White (IC, IW)



Tobacco High Gloss (Line 500, Line 400)



Walnut Veneer High Gloss (Line 500, Line 400)

IC 1010

232 x 107 mm
199 mm 0 x 120 mm
2 kg
2-Way, rear side open
1 x 165 mm, cone
–
1 x 25 mm, cone, coaxial
–
3,000 Hz
35 to 25,000 Hz
88 dB at 2.83 V/m
4 - 8 Ω
20 - 120 W/channel
50 W | 70 W
8 Ω | 7.3 Ω at 200 Hz and
5.3 Ω at 16,000 Hz
Arctic White

IW 1130

308 x 220 x 115 mm
275 x 190 x 105 mm
2.5 kg
2-Way, closed
1 x 140 mm, AS cone
–
1 x 25 mm, silk dome
Yes
2,200 Hz
60 to 25,000 Hz
86 dB at 2.83 V/m
4 - 8 Ω
20 - 150 W/channel
55 W | 80 W
8 Ω | 6.3 Ω at 250 Hz
Arctic White

IW 1230

308 x 220 x 115 mm
275 x 190 x 105 mm
3 kg
2-Way, closed
1 x 140 mm, AS cone
–
JET III
Yes
3,100 Hz
60 to 50,000 Hz
86 dB at 2.83 V/m
4 - 8 Ω
30 - 150 W/channel
55 W | 80 W
8 Ω | 6.1 Ω at 260 Hz
Arctic White

WS 1135

320 x 230 x 116 mm
3.7 kg
2-Way, closed
1 x 140 mm, AS cone
–
1 x 25 mm, silk dome
Yes
2,200 Hz
60 to 25,000 Hz
86 dB at 2.83 V/m
4 - 8 Ω
20 - 150 W/channel
55 W | 80 W
8 Ω | 6.3 Ω at 250 Hz
Silk Matt White

WS 1235

320 x 230 x 116 mm
4.2 kg
2-Way, closed
1 x 140 mm, AS cone
–
JET III
Yes
3,100 Hz
60 to 50,000 Hz
86 dB at 2.83 V/m
4 - 8 Ω
30 - 150 W/channel
55 W | 80 W
8 Ω | 6.1 Ω at 260 Hz
Silk Matt Black and White

FS 217

975 x 232 x 290 mm
17.8 kg
2 1/2-Way, bass reflex
2 x 140 mm, AS cone
–
JET III
–
700 | 2,700 Hz
36 to 50,000 Hz
88.5 dB at 2.83 V/m
4 - 8 Ω
20 - 200 W/channel
90 W | 130 W
4 Ω | 3.4 Ω at 210 Hz
Silk Matt Black and White
magn. fixed fabric grille

FS 197

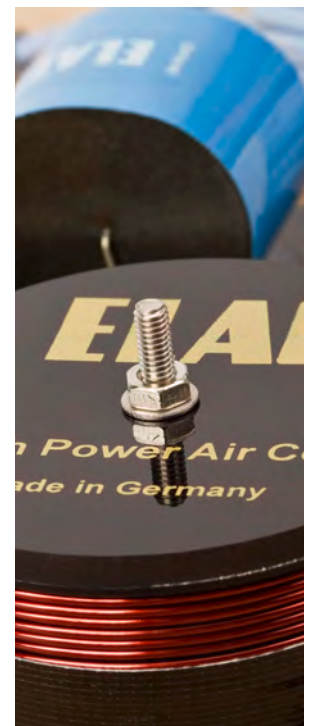
975 x 210 x 290 mm
15 kg
2 1/2-Way, bass reflex
2 x 140 mm, AS cone
–
JET III
–
700 | 2,700 Hz
36 to 50,000 Hz
88.5 dB at 2.83 V/m
4 - 8 Ω
20 - 200 W/channel
90 W | 130 W
4 Ω | 3.4 Ω at 210 Hz
Silk Matt Black and White
metal and fabric grille

BS 192

290 x 160 x 262 mm
5.5 kg
2-Way, bass reflex
1 x 135 mm, AS cone
–
JET III
–
2,500 Hz
46 to 50,000 Hz
87 dB at 2.83 V/m
4 - 8 Ω
20 - 140 W/channel
60 W | 80 W
4 Ω | 3.3 Ω at 250 Hz
Silk Matt Black and White
magn. fixed metal and fabric grille

CC 191

158 x 435 x 350 mm
8.8 kg
2 1/2-Way, bass reflex
2 x 135 mm, AS cone
–
JET III
Yes
700 | 2,400 Hz
44 to 50,000 Hz
88.5 dB at 2.83 V/m
4 - 8 Ω
20 - 170 W/channel
80 W | 110 W
4 Ω | 3.5 Ω at 200 Hz
Silk Matt Black and White
magn. fixed metal and fabric grille



	SUB 2060 D	SUB 2040 ESP	SUB 2030	SUB 111.2 ESP
Height x Width x Depth	440 x 230 x 300 mm	410 x 257 x 358 mm	356 x 300 x 315 mm	400 x 257 x 400 mm
Weight	16.5 kg	17.7 kg	14 kg	13 kg
Type	1-Way active, 2 woofers in closed box, remote control	1-Way active, 2 woofers in closed box	1-Way active	1-Way active, bass reflex
Woofers	2 x 180 mm, AS Cone, LLD	2 x 200 mm, AS Cone	1 x 250 mm, Cone	1 x 200 mm, AS cone
Upper cutoff frequency	40 to 180 Hz	40 to 180 Hz	44 - 160 Hz	40 to 180 Hz
Frequency range (IEC 268-5)	29 to 240 Hz	25 to 240 Hz	20 - 180 Hz	35 to 240 Hz
Maximum amplifier power	330 W	300 W	350 W	100 W
Finishes	Black and White High Gloss, Titan Shadow	Black High Gloss, Titan, Silk Matt White	Silk Matt Black	Cherry, Black, Silver and Titan High Gloss front; Silk Matt Black and White; Dark Cherry and Walnut
Optional accessories	–	–	Wireless Set Stereo	–

	MicroSUB 2010.2		FS 407	BS 403
Height x Width x Depth	218 x 150 x 178 mm	Height x Width x Depth	1038 x 260 x 314 mm	308 x 166 x 294 mm
Weight	4.8 kg	Weight	20.4 kg	7.3 kg
Type	1-Way active, 2 woofers in closed cabinet, remote control	Type	2 ½-Way, bass reflex	2-Way, bass reflex
Woofers	2 x 115 mm, AS cone	Woofers	2 x 150 mm, AS XR Konus	1 x 150 mm, AS XR Konus
Upper cutoff frequency	40, 80, 120, 160 Hz, adjustable	Midrange	–	–
Frequency range (IEC 268-5)	36 to 200 Hz	Tweeter	JET 5	JET 5
Maximum amplifier power	55 W for subwoofer 55 W for satellites	Magnetic shielding	–	–
Power consumption	< 1 W (StandBy) max. 100 W	Crossover frequency	450 2.500 Hz	2.500 Hz
Input analogue	2 x unbalanced (RCA, 3.5 mm TRS), 1 x ELAC WL Interface (USB-A)	Frequency range (IEC 268-5)	30 to 50,000 Hz	41 to 50,000 Hz
Input digital	1 x S/PDIF (optical Toslink, up to 96 kHz / 24 Bit), 1 x USB-Interface (USB-B, sound card emulation, up to 48 KHz / 16 Bit)	Sensitivity	88 dB at 2,83 V/m	86 dB at 2,83 V/m
Output	2 x Speaker-Out (L/R)	Suitable for amplifiers from ... to	4 - 8 Ω	4 - 8 Ω
Finishes	Black and White High Gloss	Recommended amplifier power	40 - 300 W/channel	40 - 200 W/channel
Optional accessories	Wireless Set Stereo	Nominal / Peak power handling	130 W 170 W	70 W 100 W
		Nominal- Minimum impedance	4 Ω 3,5 Ω at 200 Hz	4 Ω 3,2 Ω at 260 Hz
		Finish	Black, White, Tobacco High Gloss; Silk Matt Black; Walnut Veneer High Gloss	Black, White, Tobacco High Gloss; Silk Matt Black; Walnut Veneer High Gloss
		Accessories included in delivery	Magn. fixed fabric grille	Magn. fixed fabric grille

	AM 50 Stereo Set	AM 150	AM 180
Height x Width x Depth	210 x 136 x 165 mm	290 x 195 x 280 mm	290 x 195 x 280 mm
Weight	4.3 kg	7.6 kg	7.8 kg
Type	Master: 2-way active closed Slave: 2-way closed	2-Way active, bass reflex	2-Way active, bass reflex
Woofers	1 x 110 mm, cone	1 x 130 mm, cone,	1 x 130 mm, AS cone
Tweeter	1 x 25 mm, dome	1 x 25 mm, dome	JET III
Magnetic shielding	–	Yes	–
Crossover frequency	2,500 Hz	3,000 Hz	3,000 Hz
Frequency range (IEC 268-5)	52 to 25,000 Hz	48 to 30,000 Hz	38 to 50,000 Hz
Maximum amplifier power	2 x 25 W	Woofer: 50 W Tweeter: 25 W	Woofer: 55 W Tweeter: 28 W
Input	Master: Analogue: 2 x unbalanced (RCA, 3.5 mm TRS), 1 x ELAC WL Interface (USB-B). Digital: 1 x USB-Interface (USB-A, sound card emulation).	Analogue: 1 x unbalanced (RCA), 2x balanced (XLR, 6,35 mm TRS). Digital: 1 x S/PDIF (RCA), 1 x AES/EBU (XLR), up to 48 kHz.	Analogue: 1 x unbalanced (RCA), 2x balanced (XLR, 6.3 mm TRS). Digital: 2 x S/PDIF (RCA, Toslink), 1 x AES/EBU (XLR), up to 48 kHz.
Output	Master: speaker-out	1 x digital S/PDIF (RCA), pass through	Digital: 2 x S/PDIF thru (RCA, Toslink)
Finishes	Silk Matt White	Black and White Silk Matt	Black and White High Gloss
Front cover	metal grille	–	fabric grille, magn. fixed
Optional accessories	Wireless Set Stereo	–	–

Errors and omissions excepted.

For technical details, please consult
www.elac.com

Errors and omissions excepted.



ELAC Electroacoustic GmbH

Rendsburger Landstraße 215 • 24113 Kiel • Germany
Tel. +49-431-64774-0 • www.elac.com