

# VIPER®



**NO ONE DARES  
COME CLOSE®**



## CONNECTED CAR

REMOTE START, SECURITY AND  
CONVENIENCE SYSTEMS

**VIPER**  
SMARTSTART

**VIPER**  
SMARTKey

XPRESSSTART







# WHAT'S NEW



## KEYLESS HAS NEVER BEEN KEYLESS, UNTIL TODAY.

No keys. No fobs. No launching apps. All you need is the smartphone in your pocket or purse.

### VIPER SMARTKey



### A TRANSMITTER FOR EVERY MOOD

Color up your new LED remote with these eight new transmitter cases. With 20% larger buttons, accident proof keypad and a durable new colored Soft Touch satin finish. These cases are the perfect compliment to your new remote.

## THE EVOLUTION IN TRANSMITTERS

### FROM PAPER TO PRODUCTION

Introducing the new Viper remote lineup. You asked for it and here they are. This redesign not only looks good, they're stronger, tougher and more rugged than ever before. With 20% larger buttons, accident proof keypad and a durable new Soft Touch satin finish. These remotes take comfort and convenience to the next level.



## WORK SMARTER NOT HARDER

Analog, digital, or both; new sports coupe, old reliable pickup truck or mom's hand-me-down minivan - no matter the scenario, Directed's DBALL2Pro provides the solution for all your remote start or combined security and remote start installations. Picture your stockroom with just a few SKUs that form the foundation for building anything your customers want using just a handful of additional accessories and branded RF kits.

### The world's first digital or analog security and remote start system with a built-in data interface.

Download the latest firmware from [www.directechs.com](http://www.directechs.com) and it supports any vehicle databus architecture to provide digital connectivity and control of door locks and all convenience features – plus override of the factory engine immobilizer. DBALL2Pro supports manual transmissions as well.



DATA INTERFACE

**Digital Platform DBALL2**  
No longer a separate stand-alone module, DBALL2 technology is built right in!

**Analog Platform Remote Start and Security System**  
Fully featured systems with fewer wires, fewer parts, and faster installation times!



DBALL2Pro

**Universal Digital Platform**  
The best of both worlds, brought together in this sleek and elegant new system.

## ALL NEW REMOTES

New industrial design features slimmer remotes with 20% larger buttons and icons and a new soft touch finish.



**VIPER 1-WAY**  
New industrial design featuring slimmer remotes with 20% larger buttons and icons and a new soft touch finish.



**VIPER LED 2-WAY**  
New industrial design with command confirmations via LED indicators on the remote. A slimmer remote with 20% larger buttons and icons and a new soft touch finish.



**VIPER LCD**  
New industrial design with command confirmations via a larger LCD screen. A slimmer remote with a mini USB charging port and a new soft touch finish.



**RESPONDER ONE**  
A much smaller and much slimmer way to control your vehicle.





# SMARTSTART

SOLUTIONS FOR EVERY CUSTOMER

www.viper.com  
800-876-0800

## VIPER SMARTKey



### VSK100 SmartKey

**Service Plan\*\***  
No service plan required  
Uses Bluetooth wireless technology

**Features:**  
Keyless Entry (Passive or Active)  
Can be added to most Viper systems  
Adds SmartStart control to vehicle

**Applicable smartphones:**



## VIPER SMARTSTART



### VSM200 SmartStart

**Service Plan as low as\*\***  
\$4.69/Month (3-year commitment)

**Features:**  
Keyless Entry  
Control your car from virtually anywhere  
Free roadside assistance

**Applicable smartphones:**



## VIPER SMARTSTART GPS



### VSM250 SmartStart GPS

**Service Plan as low as\*\***  
\$5.00/Month (3-year commitment)  
**Premium Plan as low as\*\***  
\$6.67/Month (3-year commitment)

**Features:**  
Keyless Entry  
Control your car from virtually anywhere  
Free roadside assistance  
Stolen vehicle tracking

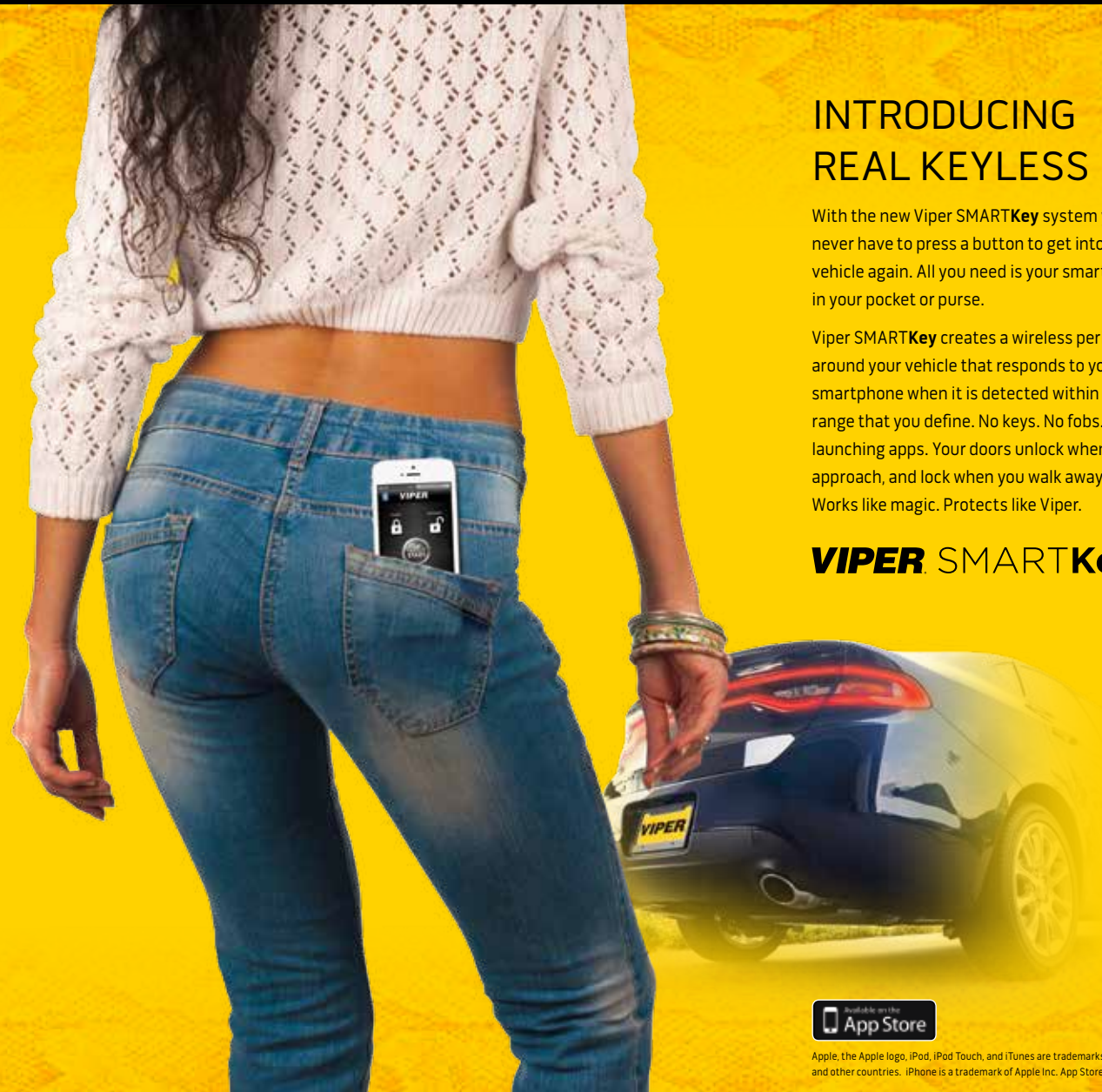
**Location Services:**



**Safety Monitoring:**  
Available with Premium Plan Only\*\*



**Applicable smartphones:**



## INTRODUCING REAL KEYLESS

With the new Viper SMARTKey system you will never have to press a button to get into your vehicle again. All you need is your smartphone in your pocket or purse.

Viper SMARTKey creates a wireless perimeter around your vehicle that responds to your smartphone when it is detected within the range that you define. No keys. No fobs. No launching apps. Your doors unlock when you approach, and lock when you walk away. Works like magic. Protects like Viper.

## VIPER SMARTKey



Apple, the Apple logo, iPod, iPod Touch, and iTunes are trademarks of Apple Inc. registered in the U.S. and other countries. iPhone is a trademark of Apple Inc. App Store is a service mark of Apple Inc.

\*Additional parts and labor may be necessary for your vehicle. Ask your installer for details.  
\*\*Prices and features are subject to change. Visit www.viper.com/smartstart for details.

Apple, the Apple logo, iPod, iPod Touch, Siri, and iTunes are trademarks of Apple Inc. registered in the U.S. and other countries. iPhone is a trademark of Apple Inc. App Store is a service mark of Apple Inc.  
BlackBerry® and related marks and logos are owned by Research In Motion Limited and are registered and/or used in the U.S. and elsewhere. Used under license from Research In Motion Limited. Viper SmartStart is a product from Directed and has not been authorized, sponsored, or otherwise approved by Research In Motion Limited.  
Android is a trademark of Google Inc. Use of this trademark is subject to Google Permissions



### VIPER SMARTKey

Use the Bluetooth technology already on your smartphone as a local transmitter or as a standalone keyless entry.



### VIPER SMARTSTART

Start, locate or control your car from virtually anywhere with your smartphone.



### VIPER SMARTSTART GPS

Start, control, and locate your car from virtually anywhere with your smartphone.





# LET YOUR CUSTOMERS CHOOSE HOW THEY CONTROL THEIR VEHICLE

www.viper.com  
800-876-0800

## 2-WAY READY SYSTEMS

The all new Viper 2-way ready systems offers the ultimate in security, convenience and customization. Allowing your customers to choose the convenience of a remote start or the peace of mind of a full blown security. Choose from the following systems:

### Security and Remote Start

Viper 5606V Series

The all new Viper 5606V Series, Security and Remote Start systems wrap your vehicle in the ultimate vehicle in protection, using the most sophisticated electronic technologies available plus the convenience of remote start.

### Remote Start

Viper 4806V Series

Start your engine with the push of a button on the remote of your choosing or from your smartphone. Let your customers choose from 1/2 mile or 1-mile range using these newly designed slender, elegant remote controls, or unlimited range via their smartphone.

### Security

Viper 3806V Series

The Viper 3806V security system will wrap your vehicle in protection, with the most sophisticated electronic technologies available today, including the Stinger® DoubleGuard® shock sensor, Revenger® six-tone siren and Failsafe® Starter Kill.

## CHOOSE YOUR SYSTEM

Choose from the convenience of a remote start or the peace of mind of full blown security that are 2-way ready.



5606V Series Security and Remote Start



4806V Series Remote Start



3806V Series Security

All systems include One 1-way remote



## VIPER SMARTSTART

The all new Viper SMARTSTART is compatible, meaning you now have the option of choosing unlimited range and control with any of our Viper 2-way ready system configurations.

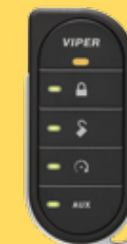


## CHOOSE YOUR CONTROL

The all new Viper 2-way ready systems provide ultimate flexibility with four distinct choices to control your vehicle.



**LCD 2-way**  
The all new LCD 2-way tranceiver, featuring One mile range and 2-way communication.



**LED 2-way**  
The all new LED 2-way transmitter features One Mile range and 2-way communication.



**1-way**  
The newly designed 1-way transmitter, featuring 1/2 mile range.

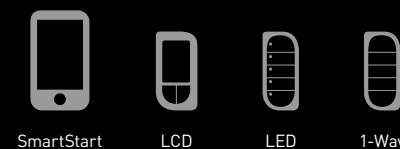
## THE POWER OF CHOICE

Empower your customers to not only choose the level of protection they want, but how they control it as well with these three easy steps:

### 1 Choose Your System



### 2 Choose Your Remote



### 3 Install, That's it!







MORE WAYS TO CHOOSE

XPRESSKIT

ALL NEW VIPER RF KITS



RF KITS

New RF kits are available now in hanging clamp packs for easy display and sale in your store.

TRANSMITTERS

New remotes are available now in hanging clamp packs for easy display and sale in your store.



INTRODUCING THE

DBALL2 & DBALL2Pro

Universally compatible and cloud-connected ready, they're the only two hardware platforms you'll ever need in your install bay!

They pack a 1-2 punch like no other products before them!



**DBALL2**  
Interface module with RSR/RXT functionality

**DBALL2Pro**  
All-In-One Digital/Analog Remote Start & Security Platform



3.1  
Cloud Connected Functionality







# SECURITY AND REMOTE START SYSTEMS

## Color 2-Way

Security and Remote Start



SST one mile range\*\*  
Color OLED display with 65k colors  
Active temp check  
\* Additional parts and labor may be required.

5906V



## LCD 2-Way

Security and Remote Start



SST one mile range\*\*  
Priority icon map with 20% larger display  
Active temp check  
\* Additional parts and labor may be required.

5706V



## LED 2-Way

Security and Remote Start



SST one mile range\*\*  
Temp check  
Active temp check  
\* Additional parts and labor may be required.

5806V



## 1-Way

Security and Remote Start



SST 1/2 mile range\*\*  
Active temp check  
Includes companion remote  
\* Additional parts and labor may be required.

5606V 2-Way Upgradeable



## VIPER SMARTSTART

Security and Remote Start System



Combines classic Viper performance with Viper SmartStart smartphone control at an attractive price

Adds 2-way functionality via Viper SmartStart app, with security Smart Alerts, command confirmation and other Viper SmartStart features.

Complete security and remote start system with one 4-button remote

\* Additional parts and labor may be required.

VSS5000

SMARTSTART

\*\* Range, based on line-of-sight, unobstructed testing in ideal conditions. Actual range will vary due to local conditions, including but not limited to environment, terrain, physical obstructions, vehicle location and orientation, interference and other possible impediments.



# SECURITY SYSTEMS

## 1-Way Security System



- SST 1/2 mile range\*\*
- Onboard door lock relays
- Flex relays and light flash
- 4 auxiliary channels
- Horn Honk\*
- \*Additional parts and labor may be required.

3606V 2-Way Ready



## 2-Way Responder Security System



- Up to 1/4 mile range\*\*
- 3-channel security and keyless entry system
- Clone-Safe® Code-Hopping®
- 2 auxiliary outputs
- \*Additional parts and labor may be required.

3305V



## 1-Way Security System



- Up to 1/4 mile range\*\*
- 6-channel security and keyless entry system
- Clone-Safe® Code-Hopping®
- On-board door lock relays
- Dome Light Supervision – On-board relay
- Retained accessory power
- 5 auxiliary outputs
- Horn Honk
- \*Additional parts and labor may be required.

3102V



## 1-Way Security System



- Up to 1/4 mile range\*\*
- 3-channel security/keyless entry system
- Clone-Safe® Code-Hopping®
- Comfort Closure
- 2 auxiliary outputs
- \*Additional parts and labor may be required.

3105V



## KEYLESS ENTRY

### 1-Way Keyless Entry System



- Up to 1/4 mile range\*\*
- Includes two 4-button remotes
- Ignition-controlled door locks
- Panic/car locator\*
- Interior light illumination\*
- Comfort Closure\*
- 2 auxiliary outputs
- 2nd Unlock output\*
- Limited Lifetime Warranty
- \*Additional parts and labor may be required.

211HV



\*\* Range, based on line-of-sight, unobstructed testing in ideal conditions. Actual range will vary due to local conditions, including but not limited to environment, terrain, physical obstructions, vehicle location and orientation, interference and other possible impediments.



### VIPER SMARTSTART

Start, locate or control your car from virtually anywhere with your smartphone.





# REMOTE START SYSTEMS

## LCD 2-Way

Remote Start / Keyless Entry



SST one mile range\*\*  
Rechargeable battery  
Priority icon map with 20% larger display  
24-channel security system  
SuperCode Technology  
Onboard door lock relays  
Flex relays and light flash  
4 auxiliary channels  
Horn Honk\*

4706V



## LED 2-Way

Remote Start / Keyless Entry



SST range up to one mile\*\*  
GhostLight indicators  
24 channel security system  
SuperCode technology  
Onboard door lock relays  
Flex relays and light flash  
4 auxiliary channels  
Horn Honk\*

4806V



## 2-Way

One Button Remote Start



SuperCode range up to 1/2 mile\*\*  
Remote start system  
Unlock while running\*  
Horn Honk\*

4205V



## 1-Way

Remote Start System



SST 1/2 mile range\*\*  
4 auxiliary channels  
Comfort Closure\*  
Horn Honk\*  
XPRESSPORT™

4606V 2-Way Upgradeable



## 1-Way

Remote Start



Up to 1/4 mile range\*\*  
Bitwriter programmable for easy configuration  
Superhet receiver for great range  
Unlock, panic and remote start  
XCR relays onboard  
Timer mode

4105V



## 1-Way

Remote Start



Up to 1/4 mile range\*\*  
Bitwriter programmable for easy configuration  
Superhet receiver for great range

4115V



\*\*Range, based on line-of-sight, unobstructed testing in ideal conditions. Actual range will vary due to local conditions, including but not limited to environment, terrain, physical obstructions, vehicle location and orientation, interference and other possible impediments.



## VIPER SMARTSTART

Start, locate or control your car from virtually anywhere with your smartphone.

## VIPER SMARTSTART Remote Start System

DBALL2Pro Interface Included

Adds 2-way functionality via Viper SmartStart app, with security Smart Alerts, command confirmation and other SmartStart features.

Unlimited range  
Auxiliary channels

\* Additional parts and labor may be required. VSS3001









Viper transmitter cross reference chart 2014

Model Number	Part Number	Date Code	Original Remote	Compatible Remotes	Alternate Remotes	Type
Viper ResponderOne	4203V	All	7211V (LED 2wy)	7211V (LED 2wy)		learn
50	405V	All	No remote/NOT RF	None		N/A
100	410V	All	445T	None		scratch
100 HF (ESP)	410V	8G - up	471T	474V, 473V, 471C	7145V, 7141V, 7142V	learn
130 XV	561V	All	473V	473V, 471C (limited operation)		learn
150	715V	All	445T	None		scratch
150 HF	552V	7H - 8L	491T (NLA)	485M, 491C (NLA)		learn
150 ESP	552V	9C - 0H	471T	474V, 473V, 471C	7145V, 7141V, 7142V	learn
150 ESP	552V	0I - up	476V	474V, 473V, 471C	7145, 7141V, 7142V	learn
160 XV	562V	All	474V	473V, 471C	7145V, 7141V, 7142V	learn
160 XXL	562VL	All	7641V	7641V		learn
200	420V	Up to 2B	445T	None		scratch
200	420V	2C - 5J	493T	None		scratch
200	122V	0D - up	470T	471C		learn
201	201V	All	445T	None		scratch
210 HV	416V	All	474V	473V, 471C	7145V, 7141V, 7142V	learn
211HV	412V	All	474V	473V, 471C	7145V, 7141V, 7142V	learn
C 30	430C	2D - 5B	493T	None		scratch
300	430V	Up to 2B	445T	None		scratch
300	430V	2C - 7E	493T	None		scratch
300 HF	430V	7G - 8B [a]	491T (NLA)	485M, 491C		learn
300 HF	430V	8B - 9A	471T	474V, 473V, 471C	7145V, 7141V, 7142V	learn
PC 300 HF (ESP)	429V	All	471T	474V, 473V, 471C	7145V, 7141V, 7142V	learn
300+	432V	5L - 7E	493C	493T, 484T		learn
300+	432V	7F - 8B [a]	491T (NLA)	485M, 491C (NLA)		learn
300+ HF	432V	8B - 9B	471T	474V, 473V, 471C	7145V, 7141V, 7142V	learn
330V	427V	All	No remote/NOT RF	474V, 473V, 471C *	7145V, 7141V, 7142V, 474T	N/A
350 Classic	330V	Up to 2A	445T	None		scratch
350 Classic	330V	2B - 4E	493T	None		scratch
350 HV	426V	All	473V	474V, 471C	7145V, 7141V, 7142V, 474T	learn
Responder 350	3305V	All	7341V (LCD 2wy), 7142V	7341V (LCD 2wy), 7142V	7345V (LCD 2wy), 7145V, 474T, 7141V, 488V (LED 2wy), 488T (LED 2wy)	learn
350+	3105V	All	7142V	7142V	7145V, 474T, 7141V	learn
400	440V	Up to 2C	445T	None		scratch
400	440V	2D - 4L	493T	None		scratch
450 Classic	340V	Up to 2G	445T	None		scratch
450 Classic	340V	2H - 4B	493T	None		scratch
500	435V	Up to 2D	445T	None		scratch
500	435V	2E - 4C	493T	None		scratch
C 50	437C	4C - 5K	493C	493T, 484T		learn
C 50	437C	5L - 6C	493C	493T, 484T		learn
500+	437V	3L - 5K	493C	493T, 484T		learn
500+	437V	5L - 7E	493C	493T, 484T		learn
500 HF [Code Plus]	438V	4D - 7L	491T (NLA)	485M, 491C (NLA)		learn
500 HF	438V	8B - up	471T	474V, 473V, 471C	7145V, 7141V, 7142V	learn
PC 500 HF (ESP)	439V	7J - up	475T	474V, 473V, 471C	7145V, 7141V, 7142V	learn
500 NX	436V	All	492T	None		learn
550 Classic	335V	Up to 2C	445T	None		scratch
550 Classic	335V	2D - 4B	493T	None		scratch
550 HF	553V	5I - 6J	491T (NLA)	485M, 491C (NLA)		learn
550 HF	553V	7D - 8B	485T (NLA)	485M, 491C (NLA)		learn
550 HF	553V	8D - 9A	475T (NLA)	474V, 473V, 471C	7145V, 7141V, 7142V	learn
550 HF (ESP)	553V	9B - up	475Q (NLA)	474V, 473V, 471C	7145V, 7141V, 7142V	learn
560 XV	563V	All	474V	473V, 471C	7145V, 7141V, 7142V	learn
571 XV	572V	4G - 5G	487V (LED 2wy) (NLA)	474V, 473V, 471C	7145V, 7141V, 7142V	learn
571 XV	572V	6K - up	488V (LED 2wy)	487V (LED 2wy), 488V (LED 2wy), 474V, 473V, 471C	7345V, 7145V, 7141V, 7142V, 488T (LED 2wy)	learn
591 XV	542V	All	479V (LCD 2wy)	472V (NLA)		learn
C 60	445C	2D - 4L	493T	None		scratch
600	445V	Up to 2B	445T	None		scratch
600	445V	2C - 5E	493T	None		scratch
600 Classic	345V	Up to 2A	445T	None		scratch
600 Classic	345V	2C - 4B	493T	None		scratch
600 HF [Code Plus]	448V	4L - 6L	491T (NLA)	485M, 491C (NLA)		learn
600 HF [Code Plus]	448V	7A - 8B [a]	485T (NLA)	485M, 491C (NLA)		learn
600 HF	448V	8B - 8L	475T (NLA)	474V, 473V, 471C	7145V, 7141V, 7142V	learn
PC 600HF (ESP)	449V	9A - up	475Q (NLA)	474V, 473V, 471C	7145V, 7141V, 7142V	learn
650 XV	436V	All	474V	473V, 471C	7145V, 7141V, 7142V	learn
671 XV	437V	All	487V (LED 2wy) (NLA)	474V, 473V, 471C	7145V, 7141V, 7142V	learn
690 XV	434V	All	479V (LCD 2wy)	479V (LCD 2wy), 472V (NLA)		learn
C 70 HF	448C	5E - 6D	491T (NLA)	485M, 491C (NLA)		learn
Ultra 700	370V	Up to 2H	493T	493C, 484T		learn
Ultra 700	370V	2I - 5C	484T	493C, 493T		learn
700 HF	371V	6A - 6F	485T (NLA)	485M, 491C (NLA)		learn
700 ESP	379V	All	476V	474V, 473V, 471C	7145V, 7141V, 7142V	learn
771 XV	567V	4E - 4L	487V (LED 2wy) (NLA)	487V (LED 2wy), 474V, 473V, 471C	7145V, 7141V, 7142V	learn
771 XV	567V	5A - 7J	488V (LED 2wy)	487V (LED 2wy), 488V (LED 2wy), 474V, 473V, 471C	7345V, 7145V, 7141V, 7142V, 488T (LED 2wy)	learn
790 XV	554V	All	478V (LCD 2wy) (NLA)	479V (LCD 2wy), 472V (NLA)		learn
791 XV	564V	All	479V (LCD 2wy)	472V (NLA)		learn
Ultra 800	380V	Up to 2D	493T	493C, 484T		learn
Ultra 800	380V	2D - 5A	484T	493C, 493T		learn
800 HF	381V	5H - 6H	485T (NLA)	485M, 491C (NLA)		learn
800 HF	381V	6I - 7B	485T (NLA)	485M, 491C (NLA)		learn
800 HF	381V	7C - 7L	485T (NLA)	485M, 491C (NLA)		learn
PC 800 SHF	381V	8B - 8F	475T (NLA)	474V, 473V, 471C	7145V, 7141V, 7142V	learn
800 SHF ESP	381V	8G - UP	475T (NLA)	474V, 473V, 471C	7145V, 7141V, 7142V	learn
850XV	446V	All	474V	473V, 471C	7145V, 7141V, 7142V	learn
Ultra 900	390V	Up to 4L	484T	None		learn
1000	3101V	All	474V	473V, 471C	7145V, 7141V, 7142V	learn
1002	3102V	All	7141V	474V, 473V, 471C	7145V, 7142V	learn
3105V	3105V	All	7145V	474T, 473V		learn

Viper transmitter cross reference chart 2014

Model Number	Part Number	Date Code	Original Remote	Compatible Remotes	Alternate Remotes	Type
3000	3201V	All	488V (LED 2wy), 474V	473V, 471C	7341V (LCD 2wy), 7345V (LCD 2wy), 7145V, 7141V, 7142V, 488T (LED 2wy)	learn
3002	3202V	All	488V (LED 2wy), 7141V	474V, 473V, 471C	7341V (LCD 2wy), 7345V (LCD 2wy), 7145V, 7142V, 488T (LED 2wy)	learn
3203	3203V	All	7251V (LE 2wy), 7153V	7251V (LE 2wy), 7153V	7152V, 7153V, 7254V (LE 2wy), 7351V (LC 2wy) -- 7656V**, 7856V (LED 2wy)**	learn
3203	3203V	12I - Up	7254V (LE 2wy), 7153V	7254V (LE 2wy), 7153V	7152V, 7251V (LE 2wy), 7351V (LC 2wy) -- 7656V**, 7856V (LED 2wy)**	learn
3303	3303V	All	7351V (LC 2wy), 7153V	7351V (LC 2wy), 7153V	7152V, 7251V (LE 2wy), 7254V (LE 2wy) -- 7656V**, 7856V (LED 2wy)**	learn
3606V	3606V	All	7656V (new RF)	7856V (LED 2wy)	7856V (LED 2wy), 7756V (LCD 2wy)	learn
3706V	3706V	All	7756V (LCD 2wy), 7656V (new RF)	7856V (LED 2wy)		learn
3806V	3806V	All	7856V (LED 2wy), 7656V (new RF)	7756V (LCD 2wy)		learn
3305V	3305V	All	7345V (LCD 2wy), 7145V		474T, 473V	learn
3901V	3901V	All	None/uses fac remote	Factory OEM Remote		N/A
3902V	3902V	All	None/uses fac remote	Factory OEM Remote		N/A
3903V	3903V	All	None/uses fac remote	Factory OEM Remote		N/A
4103XV	4103V	All	7142V	7142V		learn
4104	4104V	All	7153V	7152V	7145V, 474T, 7141V	learn
4105V	4105V	All	7145V		7152V, 7254V* (LE 2wy), 7153V*, 7251V*, 7351V* (LC 2wy), 7652V*, 7654V*, 7752V*, 7654V*, 7752V* (LC3 2wy), 64317941V* (HD 2wy), 7944V* (HD 2wy) -- 7656V**, 7856V (LED 2wy)**	learn
4115V	4115V	All	7111V		7111V	learn
4204	4204V	All	7251V (LE 2wy), 7152V	7153V	7153V, 7254V (2wy), 7351V (LC 2wy), 7652V*, 7654V*, 7752V* (2wy), 7941V* (HD 2wy), 7944V* (HD 2wy) -- 7656V**, 7856V (LED 2wy)**	learn
4204	4204V	12J - Up	7254V (LE 2wy), 7153V	7153V	7152V, 7251V (LE 2wy), 7351V (LC 2wy), 7652V*, 7654V*, 7752V* (LC3 2wy), 7941V* (HD 2wy), 7944V* (HD 2wy) -- 7656V**, 7856V (LED 2wy)**	learn
4606V	4606V	All	7656V (new RF)	7756V (LCD 2wy), 7856V (LED 2wy)		learn
4704	4704V	All	7752V (LC3 2wy), 7652V	7752V (LC3 2wy), 7652V	7654V, 7941V (HD 2wy), 7944V (HD 2wy) -- 7656V**, 7856V (LED 2wy)**	learn
4704	4704V	12J - Up	7752V (LC3 2wy), 7654V	7752V (LC3 2wy), 7654V	7652V, 7941V (HD 2wy), 7944V (HD 2wy) -- 7656V**, 7856V (LED 2wy)**	learn
4706V	4706V	All	7756V (LCD 2wy), 7656V (new RF)	7856V (LED 2wy)		learn
4806V	4806V	All	7856V (LED 2wy), 7656V (new RF)	7756V (LCD 2wy)		learn
5000	3301V	All	489V (LCD 2wy), 474V	473V, 471C	7341V, 488V (LED 2wy), 7145V, 7141V, 7142V, 488T (LED 2wy), 7354V (LCD 2wy), 7145V	learn
5002	3302V	All	489V (LCD 2wy), 7141V	474V, 473V, 471C	7341V, 488V (2wy), 7145V, 7142V, 488T (2wy), 7345V (2wy), 7145V	learn
5101	4102V	All	7153V	7152V	7152V, 7251V* (LE 2wy), 7254V (LE 2wy), 7652V*, 7752V* (LC3 2wy), 7941V* (HD 2wy), 7944V* (HD 2wy)	learn
5101	4102V	9J - up	7153V	7152V	7152V, 7251V* (LE 2wy), 7254V (LE 2wy), 7351V* (LC 2wy), 7652V*, 7752V* (LC3 2wy), 7941V* (HD 2wy), 7944V* (HD 2wy)	learn
5104	5104V	All	7153V	7152V	7152V, 7251V* (LE 2wy), 7254V* (LE 2wy), 7351V* (LC 2wy), 7652V*, 7654V*, 7752V* (LC3 2wy), 7941V* (HD 2wy), 7944V* (HD 2wy) -- 7656V**, 7856V (LED 2wy)**	learn
5204	5204V	All	7251V (LE 2wy), 7152V	7153V	7153V, 7254V (LE 2wy), 7351V (LC 2wy), 7652V*, 7654V*, 7752V* (LC3 2wy), 7941V* (HD 2wy), 7944V* (HD 2wy) -- 7656V**, 7856V (LED 2wy)**	learn
5204	5204V	12J - Up	7254V (LE 2wy), 7153V	7153V	7152V, 7251V (LE 2wy), 7351V (LC 2wy), 7652V*, 7654V*, 7752V* (LC3 2wy), 7941V* (HD 2wy), 7944V* (HD 2wy) -- 7656V**, 7856V (LED 2wy)**	learn
5301	4202V	Up to 9H	7251V (LE 2wy), 7152V	7153V	7153V, 7254V (LE 2wy), 7652V*, 7654V*, 7752V* (LC3 2wy), 7941V* (HD 2wy), 7944V* (HD 2wy)	learn
5301	4202V	9I - Up	7251V (LE 2wy), 7152V	7153V	7153V, 7254V (LE 2wy), 7351V (LC 2wy), 7652V*, 7654V*, 7752V* (LC3 2wy), 7941V* (HD 2wy), 7944V* (HD 2wy)	learn
5500	4301V	All	7701V (LCD 2wy)	7701V (LCD 2wy), 7642V (NLA)		learn
5501	4702V	All	7752V (LC3 2wy), 7652V	7752V (LC3 2wy), 7652V	7654V, 7652V, 7941V (HD 2wy), 7944V (HD 2wy)	learn
5601	5102V	Up to 9K	7153V	7152V	7152V, 7251V* (LE 2wy), 7254V* (LE 2wy), 7652V*, 7654V*, 7752V* (LC3 2wy), 7941V* (HD 2wy), 7944V* (HD 2wy) -- 7656V**, 7856V (LED 2wy)**	learn
5601	5102V	9L - up	7153V	7152V	7152V, 7251V* (LE 2wy), 7254V* (LE 2wy), 7351V*, 7652V*, 7654V*, 7752V* (LC3 2wy), 7941V* (HD 2wy), 7944V* (HD 2wy)	learn
5606V	5606V	All	7656V (new RF)	7856V (LED 2wy), 7756V (LCD 2wy)		learn
5701	5202V	Up to 9J	7251V (LE 2wy), 7152V	7153V	7153V, 7254V (LE 2wy), 7652V*, 7654V*, 7752V* (LC3 2wy), 7941V* (HD 2wy), 7944V* (HD 2wy)	learn
5701	5202V	9K - Up	7251V (LE 2wy), 7152V	7153V	7153V, 7254V (2wy), 7351V, 7652V*, 7654V*, 7752V* (2wy), 7941V* (HD 2wy), 7944V* (HD 2wy)	learn
5704	5704V	All	7752V (LC3 2wy), 7652V	7752V (LC3 2wy), 7652V	7654V, 7941V (HD 2wy), 7944V (HD 2wy) -- 7656V**, 7856V (LED 2wy)**	learn
5704	5704V	12K - Up	7752V (LC3 2wy), 7654V	7752V (LC3 2wy), 7654V	7654V, 7652V, 7941V (HD 2wy), 7944V (HD 2wy) -- 7656V**, 7856V (LED 2wy)**	learn
5706V	5706V	All	7756V (LCD 2wy), 7656V (new RF)	7856V (LED 2wy)		learn
5806V	5806V	All	7856V (LED 2wy), 7656V (new RF)	7756V (LCD 2wy)		learn
5900	5301V	All	7701V (LCD 2wy)	7701V (LCD 2wy), 7642V		learn
5901	5702V	All	7752V (LC3 2wy), 7652V	7752V (LC3 2wy), 7652V</		



**VIPER®**



***NO ONE DARES COME CLOSE®***

Main Toll Free - 800.876.0800

Online Order and Warranty Processing - [www.directeddealers.com](http://www.directeddealers.com)

Online Technical Support - [www.directechs.com](http://www.directechs.com)

**DIRECTED®**