

ITALIAN
LIFESTYLE

catalogue
2018

Mark bass



Powered by
markworld.it



PASSION BRINGS INNOVATION

During the years we used many slogans to explain who we are and what we are offering.

*We started with “**THE REAL SOUND OF YOUR BASS**”, a phrase that now “inspired” also other brands. Then we had “**BASS AT ITS BEST**” still giving sense to our philosophy of products that are able to give back and glorify your instrument characteristics. After a while we launched “**BORN TO RUN**” to summarize our desire to keep going with all our passion, research and innovation that always made the difference and always will...*

*“**PASSION BRINGS INNOVATION**”*

Every single thing we do is moved by PASSION, it couldn't be any different. You can find this passion into any Mark World product and it's there every day in our relationships with our customers, artists, dealers and distributors. As we said, INNOVATION is still a constant feature of our company since the very beginning. We've been the first offering great sounding, light and portable amplifiers, the first using exclusively Neodymium speakers and we still design and develop innovative technological content products, often out of the box but always respecting our initial philosophy and our passion that we'll never lose.

**THE REAL SOUND
OF YOUR BASS!**

BASS at its BEST

**BORN
TO RUN!**



How can we describe the Italian Lifestyle?

With the risk of being repetitive, one of the first words occurred to us is PASSION... followed by CREATIVITY, GENIUS and DISSIPATION, often out of the box reinterpreting the existing standards.

Nothing would have any sense without passion. Italians have a huge passion for life and they can appreciate every single shade it offers every day.

“Italy: land of saints, poets and sailors” and no doubts... a geniuses land as well!!!

Our genius is recognized and valued all over the world, together with our dissipation, keeping us from matching the usual standards, creating a winning mix.

**“ABRUZZO: LAND OF MOUNTAINS,
SEA...AND AMPLIFIERS!”**

Our region, Abruzzo, with its beautiful mountains and amazing sea, offers unique stimulation that reflects on what we create, feeding our passion day by day...not a case it's been the first word occurred to us to describe the “ITALIAN STYLE”!

Marco de Vito



MPT isn't a catchy acronym, it actually means and recaps my **company philosophy**.

Today many manufacturers buy power amp sections from third parts, so there are many products featuring the same power amp, so the only differences are in the preamp and the mechanical parts.

I had the chance to test many amplifiers out there and, as a leader brand in the market, we had many offers to put standard power amps into our products.

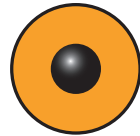
But we are **loyal to our philosophy** and our tone and everything we put into our products is designed inside the company, from the smaller screw to the power amp section, from the mechanical parts to the safety certification procedures, that today represent a huge investment.

Our **internal laboratory** could compete with very huge companies, featuring **10 engineers** working under my oversight on every single product.

We use very **hard tests** on our products and today we raised an incredible **quality control standard**.

Our **tone** is recognizable thanks to every stage of the design and the total control on any production operation.

Our passion is our job, so when you purchase one of our products you can be sure about our **constant quality with no compromise!**



CUSTOM SPEAKERS

I was interested in speakers and acoustic cabinets since I was a kid...when I was 10 I built my first cabinet...at 16 I was pretty aware about the market and I learned all the acoustic theories about speakers and their design...Any speaker can sound inside a cabinet...but the difference is into details and design choices.

When I started with Markbass, having disassembled and repaired many bass and guitar cabinets in the years, I knew the parameters my speakers should have featured.

I've been able to have custom speakers since the very first cabinets I built...I really wanted the right speaker with a particular resonating frequency, a specific range and the possibility of choosing the Thiele and Small parameters I wanted. In the beginning it hasn't been easy convincing the speaker manufacturers to create something custom for me...but I had this opportunity even when I was building just a few cabinets.

When I decided to have my unique speaker also regarding the look and color, I called my supplier and I said: "I'd like to have a yellow speaker". So he said: "*C'mon Marco, I'm pretty busy today, I have no time for joking!*"

After a few weeks I got my first yellow speaker...it was lemon yellow. Today my yellow speakers are available in more than 60 countries in the world...and we built hundreds of thousands.

The good thing...thanks to the great care we put in building them...we replaced a very few in all these years...and we don't replace or sell any speaker if we don't get back the faulty one.

Now you know what you get when you buy a **Markbass** or **DV Mark** cabinet!



NANO MARK 300

The **NANO MARK 300** once again raises the bar for bass amp heads. **Our smallest amp is not a toy**—it gives you the **Markbass tone** in the most **portable package** possible **easy to transport everywhere**, featuring **simple** and **effective controls** and yet it gives you all the **volume** you need for most gigs. You need to hear to believe such **powerful sound** can be delivered by such a **small and lightweight** package!

Many competitors was inspired by Markbass amps manufacturing small amps too but in our case small doesn't mean "poor performance", on the contrary with the **Nano Mark 300** not only you can take this **ultra-little amp** everywhere, but you don't have to sacrifice the **warm and rich Markbass tone!**



Width only
20cm / 7.87"

FEATURES

POWER

300W @ 4Ω / 150W @ 8Ω



CONTROLS

GAIN

MASTER VOLUME

EQUALIZATION (±16 DB)

LOW

center frequency: 40 Hz

MID LOW

center frequency: 360 Hz

MID HIGH

center frequency: 800 Hz

HIGH

center frequency: 10 kHz

OTHERS

XLR LINE OUT

GROUND LIFT switch

PRE/POST EQ switch

SEND/RETURN EFFECT

TUNER OUT

OPTIONALS



MARKWORLD BAG XS



BIG BANG

You'll be amazed that such a **warm, rich and “explosive” sound** comes from an amp smaller than our groundbreaking Little Mark heads, with which **Marco De Virgiliis** started pioneering **small, lightweight, powerful and great sounding amps!**

And—despite its small size—the **Big Bang** is packed with **extra features** that customers have been asking for: **aux in, headphone output** with level control, plus **mute** and **VLE** and **VPF** filters with **footswitch control**. Other features, already appreciated by Little Mark users, include a **simple and effective 4-band EQ**, **effects loop**, and **level control** and **pre/post EQ switch** for the **XLR DI output**.

FEATURES

POWER

500W @ 4Ω / 300W @ 8Ω



CONTROLS

GAIN

MASTER VOLUME

LINE OUT LEVEL

HEADPHONE CONTROL

EQUALIZATION (±16 DB)

LOW

center frequency: 40 Hz

MID LOW

center frequency: 360 Hz

MID HIGH

center frequency: 800 Hz

HIGH

center frequency: 10 kHz

FILTER SECTION EQ2

FOOTSWITCHABLE

VPF (Variable Pre-shape Filter):

center frequency 380 Hz

VLE (Vintage Loudspeaker Emulator):

frequency range 250 Hz-20 kHz

OTHERS

AUX IN

HEADPHONE OUT

XLR LINE OUT

GROUND LIFT SWITCH

PRE/POST EQ SWITCH

SEND/RETURN EFFECT

TUNER OUT

MUTE (via optional footswitch)

OPTIONALS

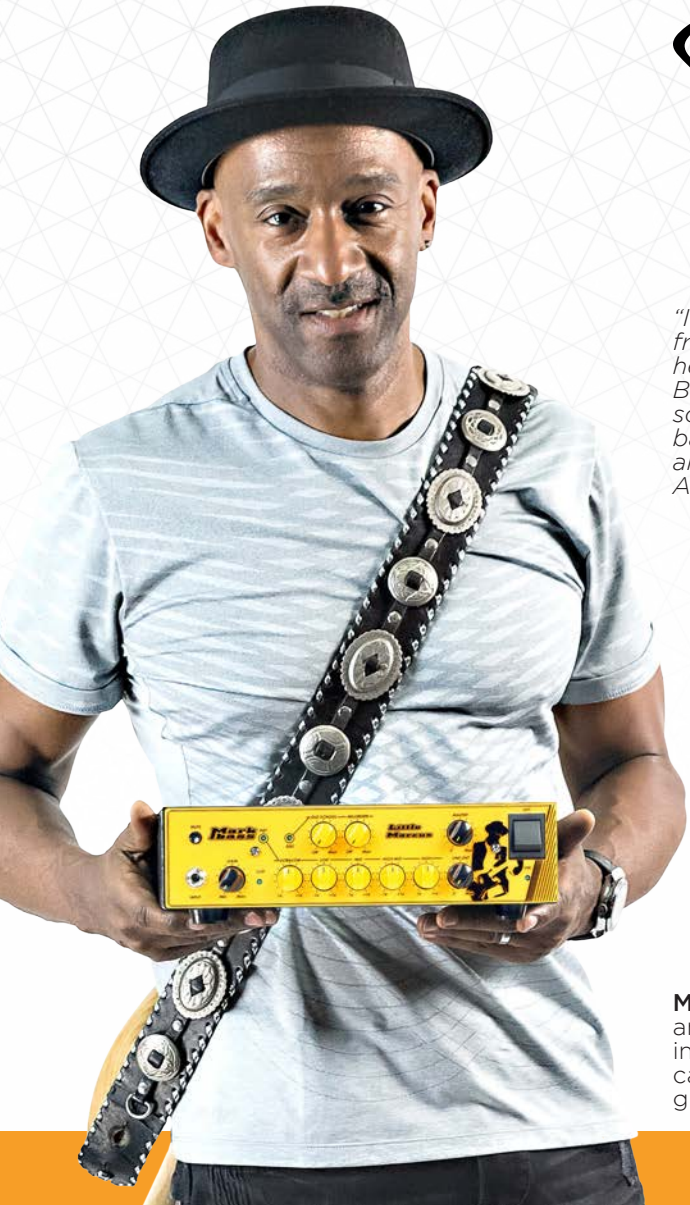
MARKWORLD
FOOTSWITCH DUAL



MARKWORLD BAG S



BIG BANG
RACK EARS



Marcus Miller

signature

"I can immediately get my sound from my "Little Marcus" signature heads.

But these amps not only let you sound like me, thanks to the five band EQ and the new "Old School" and "Millerizer" filters, you can get ANY tone you need, no limits!!!"

MARCUS MILLER



Marcus Miller is renowned for his **groundbreaking style** and **trademark sound**, and **Marco De Virgiliis** is considered an **innovator** being the **first pioneer** introducing **lightweight, portable, powerful** and **great sounding** bass heads and cabinets. The **Marcus Miller signature series** is the result of the meeting of these groundbreaking roads.



LITTLE MARCUS 250

The **Little Marcus 250** is a **smart, inexpensive** option is a **great value** for those who want the **wide range of tones** and **portability** of the Little Marcus heads but don't need the full power of a 500W head.

It's great for **practicing, rehearsing,** and **small/medium gigs.**

More info: markbass.it

Marcus Miller
signature

FEATURES

POWER
250W @ 4Ω / 150W @ 8Ω



CONTROLS

GAIN
MASTER VOLUME
LINE OUT LEVEL
MUTE SWITCH
EQUALIZATION EQ1 (± 16 DB)
FOOTSWITCHABLE
ULTRALOW (Freq. 65Hz)
LOW (Freq. 180Hz)
MID (Freq. 500 Hz)
HIGH MID (Freq. 1.4 KHz)
HIGH (Freq. 3.8 KHz)
FILTER SECTION EQ2
FOOTSWITCHABLE
OLD SCHOOL: Variable LOW PASS
From 20KHz to 200Hz
MILLERIZER: 5-12 KHz BAND PASS
FILTER (Level 0 /+10 dB)

OTHERS

XLR LINE OUT
GROUND LIFT switch
PRE/POST EQ switch
EFFECT SEND/RETURN
TUNER OUT
FSW input for (optional)
footswitch to turn on/off
EQ1 and EQ2

OPTIONALS

MARKWORLD
FOOTSWITCH DUAL



MARKWORLD BAG M



LITTLE MARK
RACK EARS

➔ 10.87"/27,6cm ➔ 9.84"/25cm ➔ 3.27"/8,3cm ➔ 5.29lbs/2,4kg



LITTLE MARCUS

The **LITTLE MARCUS** not only suits Marcus needs and taste, but is a great choice for every bassist who needs a head amp with an **amazing clear definition, punch and dynamic**, respecting the **priority of tone** like all the Little Mark heads.

It offers **simple and very effective controls** on **EQ1** to tailor your sound for any kind of genres and styles, and the two new **Old School** and **Millerizer** filters featured on **EQ2** tailored together with Marcus allows to quick obtain a **vintage tone** or an **amazing slap sound**.

Marcus Miller
signature

FEATURES

POWER

500W @ 4Ω / 300W @ 8Ω



CONTROLS

GAIN

MASTER VOLUME

LINE OUT LEVEL

MUTE SWITCH

EQUALIZATION EQ1 (±16 DB)

FOOTSWITCHABLE

ULTRALOW (Freq. 65Hz)

LOW (Freq. 180Hz)

MID (Freq. 500 Hz)

HIGH MID (Freq. 1.4 KHz)

HIGH (Freq. 3.8 KHz)

FILTER SECTION EQ2

FOOTSWITCHABLE

OLD SCHOOL: Variable LOW PASS

From 20KHz to 200Hz

MILLERIZER: 5-12 KHz BAND PASS

FILTER (Level 0 /+10 dB)

OTHERS

XLR LINE OUT

GROUND LIFT switch

PRE/POST EQ switch

EFFECT SEND/RETURN

TUNER OUT

FSW input for (optional)

footswitch to turn on/off

EQ1 and EQ

OPTIONALS

MARKWORLD
FOOTSWITCH DUAL



MARKWORLD BAG M



LITTLE MARK
RACK EARS



LITTLE MARCUS 800

The **LITTLE MARCUS 800** is a great choice for every bassist who needs a head amp with an **amazing clear definition, punch and dynamic**, respecting the **priority of tone** like all the Little Mark heads, plus its **800W MPT** power amp makes this head a **great choice for big-stage applications**, and for **louder bands**.

Marcus Miller
signature

FEATURES

POWER
800W @ 4Ω / 500W @ 8Ω



CONTROLS

GAIN
MASTER VOLUME
LINE OUT LEVEL
MUTE SWITCH
EQUALIZATION EQ1 (±16 DB)
FOOTSWITCHABLE
ULTRALOW (Freq. 65Hz)
LOW (Freq. 180Hz)
MID (Freq. 500 Hz)
HIGH MID (Freq. 1.4 KHz)
HIGH (Freq. 3.8 KHz)
FILTER SECTION EQ2
FOOTSWITCHABLE
OLD SCHOOL: Variable LOW PASS
From 20KHz to 200Hz
MILLERIZER: 5-12 KHz BAND PASS
FILTER (Level 0 /+10 dB)

OTHERS

XLR LINE OUT
GROUND LIFT switch
PRE/POST EQ switch
EFFECT SEND/RETURN
TUNER OUT
FSW input for (optional)
footswitch to turn on/off
EQ1 and EQ

OPTIONALS

MARKWORLD
FOOTSWITCH DUAL



MARKWORLD BAG M



LITTLE MARK
RACK EARS



LITTLE MARCUS 1000

This **ultrahigh-power** head gets amplified by a powerful **1000W** MPT power amp, delivering a **large supply of power** and **serious headroom** with **amazing definition** and **dynamics**.

No matter how big is the stage and the volume you play!

Marcus Miller
signature

FEATURES

POWER

1000W @ 4Ω / 600W @ 8Ω



CONTROLS

GAIN

MASTER VOLUME

LINE OUT LEVEL

MUTE SWITCH

EQUALIZATION EQ1 (±16 DB)

FOOTSWITCHABLE

ULTRALOW (Freq. 65Hz)

LOW (Freq. 180Hz)

MID (Freq. 500 Hz)

HIGH MID (Freq. 1.4 KHz)

HIGH (Freq. 3.8 KHz)

FILTER SECTION EQ2

FOOTSWITCHABLE

OLD SCHOOL: Variable LOW PASS

From 20KHz to 200Hz

MILLERIZER: 5-12 KHz BAND PASS

FILTER (Level 0 /+10 dB)

OTHERS

XLR LINE OUT

GROUND LIFT switch

PRE/POST EQ switch

EFFECT SEND/RETURN

TUNER OUT

FSW input for (optional)

footswitch to turn on/off

EQ1 and EQ

OPTIONALS

MARKWORLD
FOOTSWITCH DUAL



MARKWORLD BAG M



LITTLE MARK
RACK EARS

FEATURES

SPEAKER SIZE

2x10"

TWEETER

1" VOICE COIL

CAB POWER HANDLING

(AES Standard)

400W - RMS

IMPEDANCE

8Ω

CROSSOVER FREQUENCY

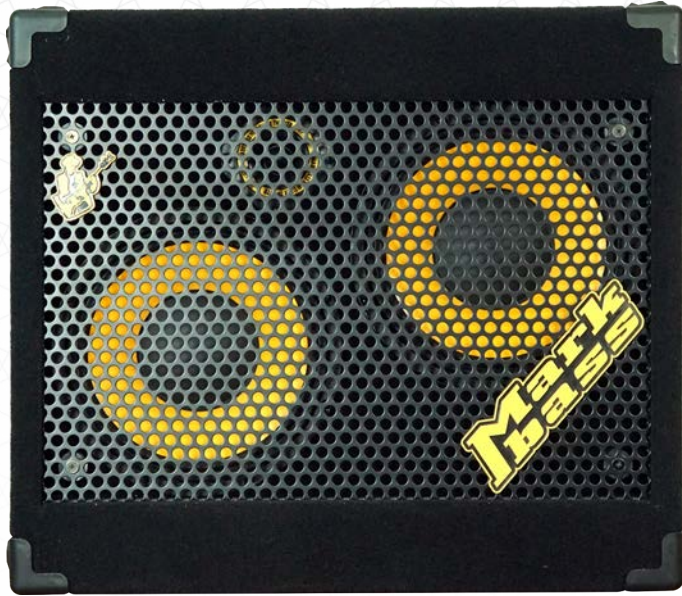
3.5 KHZ

FREQUENCY RESPONSE

101 dB SPL

REFLEX/CAB DESIGN

REAR/WEDGE



WEDGE



SIDE

"My signature Markbass cabinets have a really fat low end thanks to the rear-ported design - and the highs are ultra focused thanks to brand new 1 inch "Voice Coil" tweeter. Also the angled cabinet design allows me to use these cabinets either in the standard vertical position or as a floor monitor hearing myself perfectly on stage." **Marcus Miller**

*Marcus
Miller*

signature

MARCUS MILLER 102 CAB

This amazing cabinet is a **top choice** for bass players who need a **smaller pro-sounding rig**. Its **2x10" Markbass custom speakers** pack an **impressive punch**, and the **new 1" voice coil tweeter** gives **very focused highs** with **excellent transient attack**. The **wedge design** allows the cab to be used either as a **floor monitor** or in standard vertical or horizontal position.



WEDGE



SIDE

FEATURES

SPEAKER SIZE

4x10"

TWEETER

1" VOICE COIL

CAB POWER HANDLING

(AES Standard)

800W - RMS

IMPEDANCE

8Ω

CROSSOVER FREQUENCY

3.5 KHZ

FREQUENCY RESPONSE

103 dB SPL

REFLEX/CAB DESIGN

REAR/WEDGE

MARCUS MILLER 104 CAB

This rear-ported cab has full, controlled bottom end and smooth and crisp highs that are never harsh or brittle. It boasts an impressive 800 watts of power handling, and weighs only 48.94lbs. It truly is a leader in its field for medium and larger stages and venues due to its sound, power, portability and new wedge design... we're confident this cabinet will set a new standard for 4x10s.

*Marcus
Miller*

signature



Marcus Miller
signature

MARCUS MILLER CMD 101 MICRO 60

This is not just a practice amp, the **sound quality** delivered by this **60W** small combo is **really impressive**. At Markbass we are unable to make something not sounding good, we always use the **best components** to achieve a **full, round Markbass** sound!

Great choice for small gigs and recording and, thanks to the **balanced output**, you can connect it to a mixer/PA, then using it as a small personal monitor. This compact combo amp control section also features **level control**, **3-band EQ**, **aux in**, **headphone out**, **speaker on/off switch**.

FEATURES

POWER

60W @ 4Ω / 45W @ 8Ω



CONTROLS

GAIN

MASTER

EQUALIZATION (±16 DB)

LOW

center frequency 40 Hz

MID

center frequency 800 Hz

HIGH

center frequency 6 kHz

SPEAKER

SIZE

1x10" Markbass Custom + Tweeter

Piezo

IMPEDANCE

8Ω

POWER HANDLING

200W RMS (AES STANDARD)

OTHERS

AUX IN

HEADPHONE OUT

XLR LINE OUT

SPEAKER ON/OFF

OUTPUT FOR EXTERNAL
CAB (MINIMUM LOAD 8Ω)



MARCUS MILLER CMD 102 250

This 2x10" combo combines the Little Marcus 250 head great tone and versatility with a very innovative ultra-compact design, giving also the capability to arrange it in monitor position, making it the perfect choice for practicing, rehearsing and playing small/medium gigs!

The five bands new setting on EQ1, from ULTRALOW to HIGH and the built-in new Old School and Millerizer filters allow a wide range of tone, from vintage to Marcus unique slap voice.

FEATURES

POWER

250W @ 4Ω / 150W @ 8Ω



CONTROLS

GAIN

MASTER

LINE OUT LEVEL

MUTE switch

EQUALIZATION EQ1 (±16 DB)

FOOTSWITCHABLE

ULTRALOW (Freq. 65Hz)

LOW (Freq. 180Hz)

MID (Freq. 500 Hz)

HIGH MID (Freq. 1.4 KHz)

HIGH (Freq. 3.8 KHz)

FILTER SECTION EQ2

FOOTSWITCHABLE

OLD SCHOOL:

VARIABLE LOW PASS FROM 20KHZ

TO 200HZ

MILLERIZER:

5-12 KHZ BAND PASS FILTER

(LEVEL 0 /+10 DB)

SPEAKER

SIZE

2x10" Markbass Custom + Tweeter Piezo

IMPEDANCE 8Ω

POWER HANDLING

400W RMS (AES STANDARD)

CROSSOVER FREQUENCY 3.5KHz

FREQUENCY RESPONSE 40Hz TO 18KHz

OTHERS

XLR LINE OUT

GND-PRE/POST EQ switches

EFFECT SEND/RETURN

TUNER OUT

FSW input for (optional)

footswitch to turn on/off EQ1 and EQ2

OPTIONALS

MARKWORLD
FOOTSWITCH DUAL





MARCUS MILLER CMD 102 500

This combo features a **500W** version of the **Little Marcus** head, delivering also a **highly-portable size** thanks to its **unique** and **innovative design**. The **wedge cabinet design** allows to use it in an **angled position**, offering to you the **best monitoring on stage**.

The **MARCUS MILLER CMD 102** combos are a **great option** for **gigging bassists** who want a **great sound** without carrying a big rig. The **10" Markbass custom speakers** deliver a **loud, clear** and **punchy sound** that can cut through any mix!

FEATURES

POWER

500W @ 4Ω / 300W @ 8Ω



CONTROLS

GAIN

MASTER

LINE OUT LEVEL

MUTE switch

EQUALIZATION EQ1 (±16 DB)

FOOTSWITCHABLE

ULTRALOW (Freq. 65Hz)

LOW (Freq. 180Hz)

MID (Freq. 500 Hz)

HIGH MID (Freq. 1.4 KHz)

HIGH (Freq. 3.8 KHz)

FILTER SECTION EQ2

FOOTSWITCHABLE

OLD SCHOOL:

VARIABLE LOW PASS FROM 20KHZ TO 200HZ

MILLERIZER:

5-12 KHZ BAND PASS FILTER

(LEVEL 0 /+10 DB)

SPEAKER

SIZE

2x10" Markbass Custom + Tweeter Piezo

IMPEDANCE 8Ω

POWER HANDLING

400W RMS (AES STANDARD)

CROSSOVER FREQUENCY 3.5KHz

FREQUENCY RESPONSE 40Hz TO 18KHz

OTHERS

XLR LINE OUT

GND-PRE/POST EQ switches

EFFECT SEND/RETURN

TUNER OUT

FSW input for (optional)

footswitch to turn on/off EQ1 and EQ2

OPTIONALS

MARKWORLD
FOOTSWITCH DUAL





Marcus
Miller
signature



MARCUS MILLER CMD 103

This combo is a **unique** contribution to the bass amp market. The **3x10"** innovative cab design is the mid-way choice between a 2x10" and a 4x10", offering a **very balanced sound, power, weight and size**.

Although it's the biggest combo of Marcus signature series, the **MARCUS MILLER CMD 103** is still **portable**—and it's the **perfect choice** for players who want a **great tone** and **high power** with the **amazing clear definition, punch and dynamic** of the **Little Marcus 500W** head in a compact and versatile **3x10"** combo.

FEATURES

POWER

500W @ 4Ω / 300W @ 8Ω



CONTROLS

GAIN

MASTER

LINE OUT LEVEL

MUTE switch

EQUALIZATION EQ1 (±16 DB)

FOOTSWITCHABLE

ULTRALOW (Freq. 65Hz)

LOW (Freq. 180Hz)

MID (Freq. 500 Hz)

HIGH MID (Freq. 1.4 KHz)

HIGH (Freq. 3.8 KHz)

FILTER SECTION EQ2

FOOTSWITCHABLE

OLD SCHOOL

VARIABLE LOW PASS FROM 20KHZ TO 200HZ

MILLERIZER

5-12 KHZ BAND PASS FILTER

(LEVEL 0 /+10 DB)

SPEAKER

SIZE

3x10" Markbass Custom + 1" Voice Coil tweeter

IMPEDANCE 6Ω

POWER HANDLING

600W RMS (AES STANDARD)

CROSSOVER FREQUENCY 3.5KHz

FREQUENCY RESPONSE 40Hz TO 20KHz

OTHERS

XLR LINE OUT

GND-PRE/POST EQ switches

EFFECT SEND/RETURN

TUNER OUT

FSW input for (optional)

footswitch to turn on/off EQ1 and EQ2

OPTIONALS

MARKWORLD
FOOTSWITCH DUAL





MARKBASS CASA

Markbass top-artist **MICHAEL LEAGUE** from Snarky Puppy has partnered with Marco De Virgiliis and Markbass team to develop a signature amp with **classic tone** and **impeccable sonic integrity**. The **MARKBASS CASA** adds to the very cool **vintage design** the benefit of **new modern standard**.

"Marco and I wanted to create an amplifier that makes things simple, one that makes you feel at home with an old-school versatility that can suit practically any genre of music. The great amps of the past have all share the same qualities: rich and deep lows, a warm and punchy midrange, and the ability to get a great sound the second you plug in. The Casa has all of these! Out of curiosity, I ran a blind listening test for four professionals- two recording engineers and two musicians, using five different amplifiers and over a dozen different basses. On almost every single pass, the Markbass CASA was unanimously chosen alongside the classic amps as the favorite sound for each instrument." **Michael League**

The **MARKBASS CASA's** solid-state preamp has a **warm and natural sound**, and faithfully reproduces the **true tone** of your instrument, the treble and bass basic tone controls offers great 'plug&play' and thanks to the complete and effective 5 band EQ section you can have a **wide range of tones**, allowing instant access to **two different EQ settings** as it's footswitchable—a very **useful feature** for live applications.

FEATURES

POWER

500W @ 4Ω / 300W @ 8Ω



CONTROLS

GAIN

VOLUME

EQUALIZATION (±16 DB)

BASS

freq 60 Hz

TREBLE

freq 5 kHz

5 BAND graphic equalizer
(disabled by footswitch)

ULTRALOW

freq 67 Hz

LOW

freq 184 Hz

MID

freq 520 Hz

HI MID

freq 1400 Hz

HI

freq 3800 Hz

OTHERS

XLR LINE OUT

GROUND LIFT switch

PRE/POST EQ switch

EFFECT SEND/RETURN

TUNER OUT

OPTIONALS



MARKWORLD
FOOTSWITCH SINGLE



MICHAEL LEAGUE

signature



SIDE



REAR

FEATURES

SPEAKER SIZE

4x10"

TWEETER

1" COMPRESSION DRIVER

CAB POWER HANDLING

(AES Standard)

800W - RMS

IMPEDANCE

8Ω

CROSSOVER FREQUENCY

3.5 KHZ

FREQUENCY RESPONSE

50Hz to 20kHz

SENSITIVITY

100 dB SPL

REFLEX

SEALED /NONE

CLASSIC 104 CASA

The **CLASSIC 104 CASA** Michael League signature cabinet **looks vintage** but it offers a **wide range of tone** from classic '70s to the high-end modern sounds. The closed cabinet design of this **4x10"** cabinet makes it a **great choice** if you want a **vintage 70s sound** but... if you want to add a **modern high-end sizzle** to your sound, just turn on the tweeter level control of the **1" compression driver**.

The **10" Markbass Custom speakers** were designed especially for this **closed cabinet** series (with no bass ports) to offer **high power handling** with **ultralight weight**, this cabinet has **800W** of power handling and only weighs 47.17lbs/21,4kg!



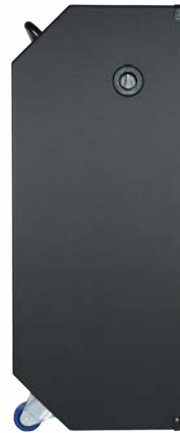
MICHAEL LEAGUE

signature

CLASSIC 108 CASA

The **CLASSIC 108 CASA** Michael League signature cabinet is the **perfect choice** to satisfy the **needs and desires** of bassists who like the **look and sound of old standards**, with the **benefits of modern standards**.

The power and lightness of this cabinet put it in a new league compared to the 8x10" cabinets from the past, which tended to be very heavy and lacked power. The **CLASSIC 108 CASA** closed cabinet (with no bass ports) features 10" Markbass custom neodymium speakers, designed especially for these **closed cabinet** series, with **1600W** of power handling from only **89 lbs!**



SIDE



REAR

The **CLASSIC 108 CASA** allows to use it as a **full 8x10"** or as a **splitted two 4x10"** cabinets, very useful for **biamp** or **stereo** applications.

FEATURES

SPEAKER SIZE

8x10"

TWEETER

1" COMPRESSION DRIVER

CAB POWER HANDLING

(AES Standard)

1600W - RMS

IMPEDANCE

4Ω (mono) / 2 x 8Ω (stereo)

CROSSOVER FREQUENCY

3.5 KHZ

FREQUENCY RESPONSE

54 Hz to 20 kHz

SENSITIVITY

103 dB SPL

REFLEX

SEALED /NONE



MB STU AMP 1000

Stu is a **real rocker** and he wanted an amp dedicated to his **articulated style** but with **simple/intuitive controls** and with a **“rock” size** to fit the taste of loud guys like him on stage. The new **Stu Hamm signature amp** features both a **solid state** and a **tube preamp** with separate level controls offering the **clean attack** of a solid state and the **warmth and grit** of a tube in a single unit with the **mix option**, plus a **7-band graphic EQ** to tailor your bass tone to perfection.

The **massive real power** of **1000W** from the **MPT** power amp allows to handle **any kind of gigs**, no matter how big the stage or how loud the band... this amp is always **ready to rock hard!** From a small club to Joe Satriani's big stage:
Rock your sound with the MB STU AMP 1000!



Stu Hamm
 SIGNATURE

“Markbass has finally given me the sound that I have been looking for! The S.T.U. Amp has beautiful solid state and tube sounds that can also be blended together to create the sound that I need, according to the musical situation”. STU HAMM

FEATURES

POWER

1000W @ 4Ω / 600W @ 8Ω



CONTROLS

SOLID STATE GAIN
 TUBE GAIN
 MASTER VOLUME
EQUALIZATION (±16 DB)
 7 BAND GRAPHIC EQ
 freq 40 Hz
 freq 80 Hz
 freq 250 Hz
 freq 400 Hz
 freq 1.2 KHz
 freq 2 KHz
 freq 4 KHz

OTHERS

PASSIVE/ACTIVE INPUTS
 XLR LINE OUT
 GROUND LIFT switch
 PRE/POST EQ switch
 EFFECT SEND/RETURN
 TUNER OUT



Stu Hamm
SIGNATURE

"This cabinet is a ground breaking (and lightweight) 2x15 cabinet, that had more clarity and punch than any 4x10 or 8x10 I've played. And the low end....OMG...wait until you hear and FEEL this amazing Bass Amp and Cabinet designed by Markbass and Stuart Hamm" STU HAMM



REAR

MB CLASSIC 152 SH

Two 15s are the **right choice** if you want to move a lot of air. It's a **fantastic solution** for **rock** and **pop** but this cabinet gives the **old-school** a **solid upgrade**. The sound is **deep and warm** but its **great clarity, definition** and **incredible fast attack** make it suitable for **any kind of genre** and **technique**.

Just listen to **Stu slap tone** coming from it and you'll **change your mind** about 15" speakers.

There are not many 2x15" cabs on the market, partly because of the typical 15" drivers lack of definition limiting their range of application. But with the **MB CLASSIC 152 SH**, this configuration is now an available choice for a wider population of bass players, **not only rock-reggae-dub** bassists but **even for slap lovers**. Not for nothing, **Stu has chosen this speaker configuration** for his **complex** and **articulate technique**.

FEATURES

SPEAKER SIZE

2x15"

TWEETER

1" COMPRESSION DRIVER

CAB POWER HANDLING

(AES Standard)

800W - RMS

IMPEDANCE

4Ω

CROSSOVER FREQUENCY

3.5 KHZ

FREQUENCY RESPONSE

50Hz to 20kHz

SENSITIVITY

103 dB SPL

REFLEX

REAR



"Here starts the shape of the Bass Sound"
Richard Bona

LITTLE MARK NINJA

Both **Richard Bona** and **Marco De Virgiliis** do not accept any compromise... the **LITTLE MARK NINJA** **Richard Bona signature** first and foremost respects the **priority of tone** that have driven the international success of our Little Mark heads, upgraded with our **new astounding 1000W** power amp. It gives a **massive amount of power**, exceptionally **clear** and **dynamic**, and performs flawlessly thanks to the cutting-edge **Mark Proprietary Technology (MPT)**. This **high-power head** is the result of years of experience; it has Little Mark's **simple, intuitive** and **effective controls** but boasts **large supply of power** and **serious headroom** in an **ultra-compact SIZE** and **light WEIGHT** with ultimate **DYNAMICS UNDER YOUR FINGERS...** at **any volume** you play!

FEATURES

POWER

1000W @ 4Ω / 600W @ 8Ω



CONTROLS

GAIN

MASTER VOLUME

LINE OUT LEVEL

EQUALIZATION (±16 dB)

LOW

center frequency 40 Hz

LOW MID

center frequency 360 Hz

HIGH MID

center frequency 800 Hz

HIGH

center frequency 10 kHz

FILTER SECTION

VPF (Variable Pre-shape Filter)

center frequency 380 Hz

VLE (Vintage Loudspeaker Emulator)

frequency range 250 Hz-20 kHz

OTHERS

XLR LINE OUT

GROUND LIFT switch

PRE/POST EQ switch

EFFECT SEND/RETURN

TUNER OUT

OPTIONALS



MARKWORLD BAG M



LITTLE MARK RACK EARS

10.87"/27,6cm 9.84"/25cm 3.27"/8,3cm 6.39lbs / 2,9kg

Richard Bona
signature

"I searched it, and I found it. It's my sound and tone. In the end it ALL come down to BASS Sound. It's ALL in Markbass!"
Richard Bona



REAR

FEATURES

SPEAKER SIZE

1x12"

TWEETER

1" COMPRESSION DRIVER WITH CUSTOM HORN

CAB POWER HANDLING

(AES Standard)

800W - RMS

IMPEDANCE

8Ω

CROSSOVER FREQUENCY

3.5 KHZ

FREQUENCY RESPONSE

40Hz to 20kHz

SENSITIVITY

99 dB SPL

REFLEX

REAR

TRAVELER 121 NINJA

The new **Richard Bona signature TRAVELER 121 NINJA** cabinet has been developed alongside the Little Mark Ninja head to bring you Richard's full sound and tone! It accurately reproduces the sound of your instrument without compromise, perfectly aligned with the vision of Richard Bona and Marco De Virgiliis.

Of course it is suitable for use with any Markbass head regardless of power as the **12" Markbass custom speaker** handles an astonishing **800W power handling** (incredible for a single 12" speaker) delivering **full volume** in a **smaller, warm sounding rig**.

Richard Bona
signature



TOP



REAR

FEATURES

SPEAKER SIZE

2x12"

TWEETER

1" VOICE COIL

CAB POWER HANDLING

(AES Standard)

800W - RMS

IMPEDANCE

8Ω

CROSSOVER FREQUENCY

3.5 KHZ

FREQUENCY RESPONSE

45Hz to 20kHz

SENSITIVITY

103 dB SPL

REFLEX

REAR

NEW YORK 122 NINJA

The **NEW YORK 212 NINJA Richard Bona signature** cabinet has a very **full yet focused sound**, with **controlled bottom end** from the **2x12" Markbass custom speakers** and **fantastic clarity and detail** from the special new **1" voice coil tweeter**.

With its **800W** power handling it's a **great single cab choice** for medium or large gigs, and its **8Ω** impedance allows you to match two of them with our powerful Markbass heads like the **Little Mark Ninja** or **Bass Multiamp S** heads.



Richard Bona
signature



REAR



NINJA 102 250

The **NINJA 102-250 RICHARD BONA signature combo** joins the others Ninja series products where the respect of your instrument tone is the first priority...with no compromise, perfectly aligned with Richard Bona and Marco De Virgiliis' vision.

Perfect for those looking for a light and compact **2x10" combo** with amazing depth and great definition. Plus, the vertical design of the **2 Markbass 10" speakers** always allows to find room on stage, even in small clubs!

This combo it's great for practicing, rehearsing, and for small gigs.

FEATURES

POWER

250W @ 4Ω / 150W @ 8Ω



CONTROLS

GAIN

MASTER

LINE OUT LEVEL

EQUALIZATION (± 16 DB)

LOW: center frequency 40 Hz

LOW MID: center frequency 360 Hz

HIGH MID: center frequency 800 Hz

HIGH: center frequency 10 kHz

FILTER SECTION

VPF

(Variable Pre-shape Filter):

center frequency 380 Hz

VLE

(Vintage Loudspeaker Emulator):

frequency range 250 Hz-20 KHz

SPEAKER

SIZE

2x10" Markbass Custom + Tweeter Piezo

IMPEDANCE

8Ω

POWER HANDLING

400W RMS (AES STANDARD)

CROSSOVER FREQUENCY:

3.5KHz

FREQUENCY RESPONSE:

45Hz TO 18KHz

OTHERS

XLR LINE OUT

GROUND LIFT switch

PRE/POST EQ switch

EFFECT SEND/RETURN

TUNER OUT



Richard Bona
signature



NINJA 102 500

This 2x10" Richard Bona signature combo features a 500W version of the Little Mark Ninja.

It's the perfect choice for those looking for a **light** and **portable** combo, but like the other Ninja series products, respecting your instrument tone is our first priority... with **no compromise**, perfectly aligned with **Richard Bona** and **Marco De Virgiliis'** vision.

You'll be surprised by the **amazing depth** and **volume** coming out of such a **compact, lightweight** combo. Plus, the **vertical design** of the two **Markbass 10" speakers** always allows to find room on stage, even in small clubs!

FEATURES

POWER

500W @ 4Ω / 300W @ 8Ω



CONTROLS

GAIN

MASTER

LINE OUT LEVEL

EQUALIZATION (±16 DB)

LOW: center frequency 40 Hz

LOW MID: center frequency 360 Hz

HIGH MID: center frequency 800 Hz

HIGH: center frequency 10 kHz

FILTER SECTION

VFP

(Variable Pre-shape Filter):

center frequency 380 Hz

VLE

(Vintage Loudspeaker Emulator):

frequency range 250 Hz-20 kHz

SPEAKER

SIZE

2x10" Markbass Custom + Tweeter Piezo

IMPEDANCE

8Ω

POWER HANDLING

400W RMS (AES STANDARD)

CROSSOVER FREQUENCY:

3.5KHz

FREQUENCY RESPONSE:

45Hz TO 18KHz

OTHERS

XLR LINE OUT

GROUND LIFT switch

PRE/POST EQ switch

EFFECT SEND/RETURN

TUNER OUT



LITTLE MARK 250 BLACK

The Black Line products are made using the same **cutting-edge technology**, **high-quality components** and the same **quality control standards** applied to all of our products.

The Little Mark 250 Black is a **smart, inexpensive choice** for those who don't need the full power of a 500W head. It's great for practicing, rehearsing, and small gigs.

Its **solid-state preamp** has a **warm and natural sound**, and faithfully reproduces the **true tone of your instrument**. The DI output features a pre-post EQ switch and output level control, so you can optimize the signal you send to the mixer or recording unit.

FEATURES

POWER

250W @ 4Ω / 150W @ 8Ω



CONTROLS

GAIN

MASTER VOLUME

LINE OUT LEVEL

EQUALIZATION (± 16 dB)

LOW

center frequency 40 Hz

LOW MID

center frequency 360 Hz

HIGH MID

center frequency 800 Hz

HIGH

center frequency 10 kHz

FILTER SECTION

VPF (Variable Pre-shape Filter)

center frequency 380 Hz

VLE (Vintage Loudspeaker Emulator)

frequency range 250 Hz-20 kHz

OTHERS

XLR LINE OUT

GROUND LIFT switch

PRE/POST EQ switch

EFFECT SEND/RETURN

TUNER OUT

OPTIONALS



MARKWORLD BAG M



LITTLE MARK RACK EARS



LITTLE MARK III

The flagship Markbass amplifier, the **Little Mark III** is the industry **standard** for **tone**, **portability** and **value**. This amp adds some high-requested features to its famous predecessor Little Mark II, with the same **compact size and weight!**

The Little Mark III's **solid-state preamp** has a **warm and natural sound**, and faithfully reproduces the **true tone of your instrument**. The **500-watt** Markbass power amp (**Markbass Proprietary Technology**) supplies **impeccable bass frequency reproduction**.

The DI output features a **pre-post EQ switch** and **output level control**, so you can optimize the signal you send to the mixer or recording unit.

FEATURES

POWER

500W @ 4Ω / 300W @ 8Ω



CONTROLS

GAIN

MASTER VOLUME

LINE OUT LEVEL

EQUALIZATION (± 16 dB)

LOW

center frequency 40 Hz

LOW MID

center frequency 360 Hz

HIGH MID

center frequency 800 Hz

HIGH

center frequency 10 kHz

FILTER SECTION

VPF (Variable Pre-shape Filter)

center frequency 380 Hz

VLE (Vintage Loudspeaker Emulator)

frequency range 250 Hz-20 kHz

OTHERS

XLR LINE OUT

GROUND LIFT switch

PRE/POST EQ switch

EFFECT SEND/RETURN

TUNER OUT

OPTIONALS



MARKWORLD BAG M



LITTLE MARK RACK EARS



FEATURES

POWER

800W @ 4Ω / 500W @ 8Ω



CONTROLS

GAIN

MASTER VOLUME

LINE OUT LEVEL

EQUALIZATION (±16 dB)

LOW

center frequency 40 Hz

LOW MID

center frequency 360 Hz

HIGH MID

center frequency 800 Hz

HIGH

center frequency 10 kHz

FILTER SECTION

VPF (Variable Pre-shape Filter)

center frequency 380 Hz

VLE (Vintage Loudspeaker Emulator)

frequency range 250 Hz-20 kHz

OTHERS

XLR LINE OUT

GROUND LIFT switch

PRE/POST EQ switch

EFFECT SEND/RETURN

TUNER OUT

OPTIONALS



MARKWORLD BAG M



LITTLE MARK RACK EARS

LITTLE MARK 800

The **Little Mark 800** is basically a Little Mark III with an **800W** MPT power amp. This **high-power head** is created for those who need **simple, intuitive and effective controls** but also like to have a **large supply of power and serious headroom**.

A great choice for **big-stage applications**, and for **louder bands**.

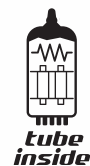
The **Little Mark 800** sound is exceptionally **warm and clear**—both at low and high volumes—preserving the **compact size and light weight** of the Little Mark series.



LITTLE MARK TUBE

Bass players often want both the **warmth** and **richness** of a **tube preamp** and the **clean attack** of a **solid state preamp**. That makes it difficult to choose which type of head to purchase. The **Little Mark Tube** solves this dilemma by putting both **together in one amp**, so you can go **tube**, go **solid state**, or mix them up!

On the front panel there are also **two inputs with separate gain controls**: one 1/4" jack, and one combo jack that accepts either a XLR or 1/4" cable. Additional features include **switchable 48V phantom power** for the XLR input, **solid-state/tube mix control**, **four bands of equalization**, **VLE** and **VPF** filters, line out level control, pre-post EQ switch for the XLR out (on the rear panel), and mute control (push-pull on the master knob).



FEATURES

POWER

500W @ 4Ω / 300W @ 8Ω



CONTROLS

GAIN 1 / GAIN 2

MIX: mixes tube and solid state preamps

MASTER VOLUME

LINE OUT LEVEL

MUTE (push/pull on master knob)

EQUALIZATION (± 16 DB)

LOW

center frequency 40 Hz

LOW MID

center frequency 360 Hz

HIGH MID

center frequency 800 Hz

HIGH

center frequency 10 kHz

FILTER SECTION

VPF (Variable Pre-shape Filter)

center frequency 380 Hz

VLE (Vintage Loudspeaker Emulator)

frequency range 250 Hz-20 kHz

OTHERS

XLR LINE OUT

GROUND LIFT switch

PRE/POST EQ switch

EFFECT SEND/RETURN

TUNER OUT

PHANTOM POWER

(on XLR INPUT 2) switch

OPTIONALS



MARKWORLD BAG M

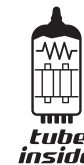


LITTLE MARK RACK EARS



LITTLE MARK TUBE 800

The Little Mark Tube solves the “*tube or solid state*” dilemma. The **Little Mark Tube 800** goes a step further by also addressing that other perennial concern, “**Will I have enough power?**” The **800 watts** from this **powerful amp** will satisfy any thirst for **power**, and the **two mixable preamps** give you the **warmth and richness** of a **tube preamp**, the **clean attack** of a **solid state preamp... or a mix of both!** On the front panel there are also **two inputs with separate gain controls**: one 1/4” jack, and one combo jack that accepts either a XLR or 1/4” cable. Additional features include **switchable 48V phantom power** for the XLR input, **solid-state/tube mix control**, **four bands of equalization**, **VLE** and **VPF** filters, line out level control, pre-post EQ switch for the XLR out (on the rear panel), and mute control (push-pull on the master knob).



FEATURES

POWER

800W @ 4Ω / 500W @ 8Ω



CONTROLS

GAIN 1 / GAIN 2

MIX: mixes tube and solid state preamps

MASTER VOLUME

LINE OUT LEVEL

MUTE (push/pull on master knob)

EQUALIZATION (±16 DB)

LOW

center frequency 40 Hz

LOW MID

center frequency 360 Hz

HIGH MID

center frequency 800 Hz

HIGH

center frequency 10 kHz

FILTER SECTION

VPF (Variable Pre-shape Filter)

center frequency 380 Hz

VLE (Vintage Loudspeaker Emulator)

frequency range 250 Hz-20 kHz

OTHERS

XLR LINE OUT

GROUND LIFT switch

PRE/POST EQ switch

EFFECT SEND/RETURN

TUNER OUT

PHANTOM POWER

(on XLR INPUT 2) switch

OPTIONALS



MARKWORLD BAG M



LITTLE MARK RACK EARS



MARKBASS EVO 1

The **Markbass EVO1** head is the result of the mix between **classic** and **advanced technology evolution** to allow bassists to have not only just a **'gorgeous'** bass sound, but always the **'right'** sound... no matter which genres and techniques you're playing!!! It offers **six AMPS** tone choices **for each of the two channels**, **clean** and **distorted**.

Bass players have always been inspired by the possibility to **mix two amplifiers tones** and to **blend clean and distorted sounds** as Jaco Pastorius did back in the years. With the Markbass EVO 1 that's possible, opening many more sound options experimenting two amps playing simultaneously.

Both channels feature **classic standard amp controls interface** and one **effect** each, **MIDI In port**, on board **tuner**, **aux in** and **headphones out**, **FX loops**, **XLR Line Outs**, and a powerful **500W MPT** power amp.

FEATURES

POWER

500W @ 4Ω / 300W @ 8Ω



CHANNELS

TWO (with six Virtual AMPs per channel) + MIX mode

CONTROLS

GAIN (per channel)

AMP SELECTION: 6 for CH1 / 6 for CH2

LEVEL (per channel)

FX 1 / FX 2 / MIX

MASTER

PHONE LEVEL

BOOST

EQUALIZATION (per channel)

LOW

MID

HIGH

OTHERS

AUX IN

HEADPHONE OUT

XLR LINE OUT 1 / XLR LINE OUT 2

GROUND LIFT switches

PRE/POST MIX switch (LINE OUTS)

Channels Switch / MIX

TUNER (with MUTE function)

440Hz / half step down / whole step down modes

EFFECT SEND-RETURN 1 / EFFECT

SEND-RETURN 2

USB: type B

MIDI: DIN 5 poles

OPTIONALS



MARKWORLD BAG
LARGE



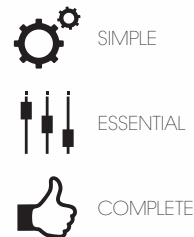
MB EVO1
CONTROLLER



BASS MULTIAMP

The **BASS MULTIAMP** is one of the most powerful **all-in-one preamp/effects processor/power amps** ever produced!
It features everything a bass player needs: **three fully programmable channels** (Solid State / Tube / Vintage), and a vast array of **virtual amps, speaker cabs, microphones** and **effects**, and a **500W** power amp with an **impressively huge, warm tone!**

From **2015** the **new design** features a **Master Volume** on the front panel instead of Headphone Level (this control is now available at System menu), a **Patch Level control**, **new effects** and **new improvements** as **Comp Indication** at the display, **ultra reduced Switching Time** between presets, **Control Change Map** with on/off assignable to each single effect... and more!



SIMPLE

ESSENTIAL

COMPLETE

FEATURES

POWER

500W @ 4Ω / 300W @ 8Ω



CHANNELS (AMP Model Banks)

SOLID STATE
TUBE
VINTAGE
CONTROLS
GAIN
PATCH LEVEL
MASTER

EQUALIZATION

Low
Mid Low
Mid High
High

OTHERS

MIDI PORTS IN / THROUGH
105 LIVE MONO Factory Presets
105 STUDIO/P.A. Factory Presets
VIRTUAL AMPS
SPEAKER CABS AND MICROPHONES
MUTE/TUNER
EFFECTS
EXTERNAL MEMORY (SD card*)

OPTIONALS



MARKWORLD MULTIAMP BAG



BASS MULTIAMP MIDI PEDALBOARD



BASS MULTIAMP S

The **BASS MULTIAMP S** is dedicated to all the bassists who like to play in **stereo** mode, like our top-artists **Jeff Berlin, Alain Caron, Richard Bona, Michael Manning**.

The **BASS MULTIAMP S** can be used for **stereo applications** with **500W@4ohm** of power for **each channel** (2x300W@8ohm) with **bi- amp option**, or **mono bridge mode** with a power of **1000W@8ohm**! Like the mono version, bassist have a wide range of virtual bass amps, both modern and vintage, **speaker cabs** and **microphones, studio and stompbox effects**, and **powerful amps...** in a practical **rack mountable unit**!

*The **BASS MULTIAMP S** features a very easy to use interface like the guitar Multiamp. More than 300 factory presets: 105 for LIVE MONO, 105 for LIVE STEREO and 105 for P.A. banks!*



SIMPLE



ESSENTIAL



COMPLETE

FEATURES

POWER

STEREO MODE:
2x500W @ 4Ω / 2x300W @ 8Ω
BRIDGE MODE:
1000W @ 8Ω



CHANNELS (AMP Model Banks)

SOLID STATE

TUBE

VINTAGE

CONTROLS

GAIN

PATCH LEVEL

MASTER

EQUALIZATION

Low

Mid Low

Mid High

High

OTHERS

MIDI PORTS IN / THROUGH
105 LIVE MONO Factory Presets
105 LIVE STEREO Factory Presets
105 STUDIO/P.A. Factory Presets
VIRTUAL AMPS
SPEAKER CABS AND
MICROPHONES
MUTE/TUNER
EFFECTS
EXTERNAL MEMORY (SD card*)

OPTIONALS



MARKWORLD
MULTIAMP BAG



BASS MULTIAMP
MIDI PEDALBOARD



WEDGE POSITION



REAR

FEATURES

SPEAKER SIZE

1x12"

TWEETER

1" VOICE COIL

CAB POWER HANDLING

(AES Standard)

400W - RMS

IMPEDANCE

8Ω

CROSSOVER FREQUENCY

3.5 KHZ

FREQUENCY RESPONSE

43Hz to 20kHz

SENSITIVITY

100 dB SPL

REFLEX/DESIGN

REAR/WEDGE

STANDARD 121 HR

The **Standard 121 HR** is a 1x12" rear tuned ported cabinet with a **warm, focused** and natural sound. It's a perfect choice for many stage situations as its wedge design allows to use it either as a floor monitor or on its side in standard position.

With its **400 watts** of power handling it can be used as a standalone with a Markbass head or as extension cabinet for our top-selling Mini CMD 121P combo. It's a **versatile** and **very portable** solution that covers all of your needs and also **ideal for double bass** and acoustic bass as **sound the of acoustic instruments** is **faithfully reproduced** by this amazing cabinet.



SIDE



REAR

STANDARD 102 HF

The **Standard 102HF** is recommended for bass players who need a **smaller pro-sounding rig**, or for those who like to combine cabinets, for example by adding a 102HF to a Standard 151 HR. Rated at **400 watts** (RMS), this small cab packs an **impressive punch** for its size!

It is the perfect compromise between the Traveler 102P and a 4x10—it has a **bigger sound** than the Traveler 2x10, but is **easier to transport** than a 4x10. Great for **rehearsal halls** and **small to medium venues**.

This cabinet is available in both **8 ohm** (Standard 102 HF-8) and **4 ohm** (Standard 102 HF-4) versions. The 4 ohm is recommended if you know you won't ever need or want to add a second cabinet, since it draws the **maximum power** from the head. If you use the 8 ohm version, you have the option to **add a second 8 ohm cabinet** anytime you need a **bigger, louder rig**.

FEATURES

SPEAKER SIZE

2x10"

TWEETER

1" COMPRESSION DRIVER WITH CUSTOM HORN

CAB POWER HANDLING

(AES Standard)

400W - RMS

IMPEDANCE

Available in 8Ω and 4Ω version

CROSSOVER FREQUENCY

3.5 KHZ

FREQUENCY RESPONSE

40Hz to 20kHz

SENSITIVITY

101 dB SPL

REFLEX

FRONT

OPTIONALS



COVER STANDARD 102HF



SIDE



REAR

FEATURES

SPEAKER SIZE

4x10"

TWEETER

1" COMPRESSION DRIVER WITH
CUSTOM HORN

CAB POWER HANDLING

(AES Standard)

800W - RMS

IMPEDANCE

Available in 8Ω and 4Ω version

CROSSOVER FREQUENCY

3.5 KHZ

FREQUENCY RESPONSE

35Hz to 20kHz

SENSITIVITY

103 dB SPL

REFLEX

FRONT

STANDARD 104 HF

The **Standard 104HF** is one of our **most popular** cabs. And, for many players, it sets a **new standard** for **4x10s**. It's a **light cabinet** compared to traditional 4x10s, but has enough **low-end muscle** to fill most venues without PA support. It truly is a **leader** in its field due to its **sound, power** and **portability** but...you don't have to trust us; let your ears and your lower back be the judge!

The **Standard 104 HF** handles an impressive **800 watts (RMS)**, yet weighs only **56.66lbs/25.7kg**. This front-ported cab is best for **low-end response**, supplying **rich, full bottom end** for medium and larger stages and venues.

The **Standard 104HF** comes in **4** and **8 ohm** versions. The 4 ohm version is the standalone option for those who want to draw the **maximum power** from their head, and know they won't ever want to add a second cabinet. Using the 8 ohm version draws less power from the head, but it leaves you the option to expand by **adding a second 8 ohm cabinet**—usually another 4x10, a 2x10, or a 1x15.

OPTIONALS



COVER STANDARD 104HF



SIDE



REAR

FEATURES

SPEAKER SIZE

4x10"

TWEETER

1" COMPRESSION DRIVER WITH
CUSTOM HORN

CAB POWER HANDLING

(AES Standard)

800W - RMS

IMPEDANCE

Available in 8Ω and 4Ω version

CROSSOVER FREQUENCY

3.5 KHZ

FREQUENCY RESPONSE

35Hz to 20kHz

SENSITIVITY

103 dB SPL

REFLEX

REAR

STANDARD 104 HR

The **Standard 104HR** is an **exceptional, professional cabinet** that performs well in any kind of gig, big or small. It puts out **impressive power at 800 watts** and **weighs only about 48 lbs.** Working bassists love it for its **power, high-quality sound** and **portability**.

We offer **8 ohm** and **4 ohm** versions of this 4x10" cabinet. If you use the 8 ohm version, you have the option to use it on its own or matched with another Markbass 8 ohm cab (for example another Standard 104HR, a Standard 151HR or a Standard 102HF). The 4 ohm version is only for standalone option.

OPTIONALS



COVER STANDARD 104HR



SIDE



REAR

FEATURES

SPEAKER SIZE

1x15"

TWEETER

1" COMPRESSION DRIVER WITH CUSTOM HORN

CAB POWER HANDLING

(AES Standard)

400W - RMS

IMPEDANCE

8Ω

CROSSOVER FREQUENCY

3.5 KHZ

FREQUENCY RESPONSE

40Hz to 20kHz

SENSITIVITY

100 dB SPL

REFLEX

REAR

STANDARD 151 HR

The **Standard 151HR** 1x15" cab is celebrated for its **warm low-mid emphasis**, it will never leave you lacking in the **bottom end** department giving a **deep**, classic sound that suits many musical styles.

This **1x15"** cabinet sound is **pleasing** and warm on its own, but also works great when added to another Markbass 8 ohm cabinet, such as the Traveler 102P, Standard 102HF or Standard 104 HR/HF, making a **powerful, killer-sounding stack!**

OPTIONALS



COVER STANDARD 104HR



REAR



SIDE

STANDARD 108 HR

Despite the trend toward smaller cabinets, there's always a healthy demand for the famous **8x10"** configuration! The legendary 8x10" cabinet was always the heaviest piece of gear a band ever had to carry. **But thanks to technology developed by Markbass**, we have entered a **new era of lightweight bass gear**. And best of all, the heaviness of the sound has not been sacrificed along the way!

1600W RMS power handling in an enclosure that weighs only **89.73 lbs / 40.7 kg!**

The Standard 108HR is the **biggest** and **loudest** Markbass cabinet and also **mostly portable 8x10"** on the market. You don't need roadies to carry this cab! It's **loud** and **full** and **aggressive**, and rock bands just don't look right without one at the back of the stage.

FEATURES

SPEAKER SIZE

8x10"

TWEETER

1" COMPRESSION DRIVER WITH CUSTOM HORN

CAB POWER HANDLING

(AES Standard)

1600W - RMS

IMPEDANCE

4Ω (mono) / 2 x 8Ω (stereo)

CROSSOVER FREQUENCY

3.5 KHZ

FREQUENCY RESPONSE

40Hz to 20kHz

SENSITIVITY

105 dB SPL

REFLEX

REAR



HANDLE



REAR

TRAVELER 102 P

The top-selling **Traveler 102P** is one of the **smallest** and **lightest 2x10"** cabinets on the market. It can be used in either a **vertical** or **horizontal** position. Perfect for club gigs, this cab especially shines when added to a Traveler 151P for a **punchy**, full-range sound.

This cabinet, which won the **2011 "Best Bass Cabinet" MIPA award**, is one of our **most popular** cabinets.

This is hardly surprising, considering the incredible **depth** and volume that comes out of such a **compact, lightweight cab!** The Traveler 102P cabinet is available in both **8 ohm** and **4 ohm** versions, many users choose **two 8 ohm cabinets** so they can have the option to use one for **small/medium gigs** and both for **medium/large venues**, giving them a **compact stack** that can handle **800W @ 4 ohms**.

More info: markbass.it

FEATURES

SPEAKER SIZE

2x10"

TWEETER

PIEZO

CAB POWER HANDLING

(AES Standard)

400W - RMS

IMPEDANCE

Available in 8Ω and 4Ω version

CROSSOVER FREQUENCY

3.5 KHZ

FREQUENCY RESPONSE

40Hz to 18kHz

SENSITIVITY

101 dB SPL

REFLEX

REAR

OPTIONALS



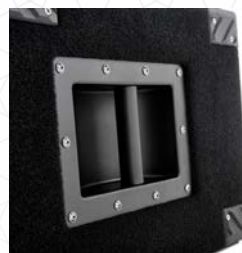
**BEST BASS
CABINET**

MIPA AWARD 2011



COVER TRAVELER 102P

← 23.23"/59cm → 17.13"/43,5cm ↓ 12.60"/32cm ↻ 27.78lbs/12,6kg



HANDLE



REAR

TRAVELER 121 H

The **Traveler 121H** is **fantastic** for bass players who need a **smaller, warm sounding rig**, and want a cabinet that **accurately reproduces the sound of their instrument**. This cab, which **won the 2007 "Best Bass Cabinet" MIPA award**, is also a **top choice for acoustic bass players**.

It stacks with Standard series cabinets and on its "side" it also stacks with the Mini CMD 121P and CMD 121H combos.

The **larger enclosure** and **1" compression driver/custom horn** of this cab give it a more **"hi-fi" tone** than the smaller New York 121. Like all Markbass cabinets, the **Traveler 121H** uses a Markbass **ultra-light neodymium custom speaker**. It weighs only **33.07 lbs / 15 kg** and has **400 watts (RMS)** of power handling.



**BEST BASS
CABINET**

MIPA AWARD 2007

FEATURES

SPEAKER SIZE

1x12"

TWEETER

1" COMPRESSION DRIVER WITH
CUSTOM HORN

CAB POWER HANDLING

(AES Standard)

400W - RMS

IMPEDANCE

8Ω

CROSSOVER FREQUENCY

3.5 KHZ

FREQUENCY RESPONSE

40Hz to 20kHz

SENSITIVITY

99 dB SPL

REFLEX

REAR

FEATURES

SPEAKER SIZE

1x15"

TWEETER

PIEZO

CAB POWER HANDLING

(AES Standard)

400W - RMS

IMPEDANCE

Available in 8Ω and 4Ω version

CROSSOVER FREQUENCY

3.5 KHZ

FREQUENCY RESPONSE

40Hz to 18kHz

SENSITIVITY

100 dB SPL

REFLEX

REAR



HANDLE



REAR

TRAVELER 151 P

The **Traveler 151P** is one of the **smallest** and **lightest 1x15"** cabinets on the market, putting **power** and **pro sound** into a **very practical package**. This portable cab gives you the **warmth** and **tone** of the **15"** speaker, either for lower volume applications or compact stacks in combination with another cab!

This cabinet stacks with other Traveler and Standard series cabinets, and it's a great match also with our CMD 102P combo.



SIDE



REAR

FEATURES

SPEAKER SIZE

1x12"

TWEETER

PIEZO

CAB POWER HANDLING

(AES Standard)

400W - RMS

IMPEDANCE

8Ω

CROSSOVER FREQUENCY

3.5 KHZ

FREQUENCY RESPONSE

40Hz to 18kHz

SENSITIVITY

100 dB SPL

REFLEX

REAR

NEW YORK 121

The **NEW YORK 121**'s dimensions make it the **perfect extension cabinet** for our top-selling **Mini CMD 121P** combo; and with its **400 watts** of power handling, it's got an **unbeatable power-weight ratio**. It can also be used as a standalone with a Markbass head; or consider the **flexibility** of using two to get a powerful, compact 2x12" stack with 800 watts of power handling!

The **NEW YORK 121** is a **versatile solution** that covers all of your needs in **small/medium clubs** and **rehearsal rooms** and you will not find a more portable cabinet anywhere!

OPTIONALS



COVER MINI CMD 121P



HANDLE



REAR

FEATURES

SPEAKER SIZE

1x15"

TWEETER

PIEZO

CAB POWER HANDLING

(AES Standard)

400W - RMS

IMPEDANCE

8Ω

CROSSOVER FREQUENCY

3.5 KHZ

FREQUENCY RESPONSE

40Hz to 18kHz

SENSITIVITY

100 dB SPL

REFLEX

REAR

NEW YORK 151

The **NEW YORK 151** is the **perfect companion** for either the **Mini CMD 151P** combo, or the **CMD 151P** Jeff Berlin combo. It's also a **great lightweight option** for any 500W Markbass amp.

Despite its **small size**, this **little powerhouse** efficiently reproduces a **wide range of frequencies**, even with **five and six strings basses**. It's one of the **smaller 1x15"** cabinet on the market, and only weighs **37.3 lbs / 16.9 Kg**.

OPTIONALS



COVER CMD JB PLAYERS SCHOOL



NEW YORK 151 BLACK

The **NEW YORK 151 BLACK** cab is a **practical, smart** and **inexpensive** solution for those who like the sound of **15"** speakers in a **small-compact package**. Its sound is **clear** and **defined** with **great bottom ends**.

It can be used alone or along with either the **Little Mark 250 Black Line** or the **Nanomark 300** heads, the **CMD 151 JB Players School** or the **Mini CMD 151 P** combo to create the **perfect rig** for small/medium/large size gigs.

More info: markbass.it

FEATURES

SPEAKER SIZE

1x15"

TWEETER

PIEZO

CAB POWER HANDLING

(AES Standard)

300W - RMS

IMPEDANCE

8Ω

CROSSOVER FREQUENCY

3.5 KHZ

FREQUENCY RESPONSE

40Hz to 18kHz

SENSITIVITY

100 dB SPL

REFLEX

REAR

OPTIONALS



COVER CMD JB PLAYERS SCHOOL

↔ 18.30"/46,4cm ↻ 18.90"/48cm ⓘ 18.70"/46,4cm ⚖ 44.97lbs/20,4kg



TOP



REAR

FEATURES

SPEAKER SIZE

2x12"

TWEETER

1" VOICE COIL

CAB POWER HANDLING

(AES Standard)

800W - RMS

IMPEDANCE

4Ω

CROSSOVER FREQUENCY

3.5 KHZ

FREQUENCY RESPONSE

40Hz to 20kHz

SENSITIVITY

103 dB SPL

REFLEX

REAR

NEW YORK 122

The **New York 122** features two **Markbass custom 12" neodymium speakers** and a special **1" voice coil tweeter**. With **high output, punchy low-end** and **incredible definition** in the mids and highs, this cab is a **great choice** for lovers of **full, flat-response tone!**

This 2x12" cabinet handles an impressive 800 watts, making it suitable for use with any Markbass head regardless of power and a **great single cab choice** for small, medium or large clubs.



TOP



Jeff Berlin
signature

CMD JB PLAYERS SCHOOL

The CMD JB PLAYERS SCHOOL combo, named as the great Music School founded by Markbass top-artist Jeff Berlin, is the perfect choice for students... not only at The Player School of Music but worldwide!

We at Markbass know how important it is for student to practice and play with a good professional sound and having a compact, light and portable combo as well. This combo is the smart choice to satisfy all of these requests. It's inexpensive, it features the same quality standard and the same quality control tests applied to all of our products by our technicians during production.

Jeff says, "The CMD JB Players School combo combines Markbass' usual great tone with a high quality amp cabinet that is affordable. I am only interested in an amp if it has good tone built into it. This amp has it! I can practice with this amp and I can gig with it as well."

FEATURES

POWER

250W @ 4Ω / 150W @ 8Ω



CONTROLS

GAIN

MASTER

LINE OUT LEVEL

EQUALIZATION (±16 DB)

LOW: center frequency 40 Hz

LOW MID: center frequency 360 Hz

HIGH MID: center frequency 800 Hz

HIGH: center frequency 10 kHz

FILTER SECTION

VPF

(VARIABLE PRE-SHAPE FILTER):

CENTER FREQUENCY 380 HZ

VLE

(VINTAGE LOUDSPEAKER EMULATOR):

FREQUENCY RANGE 250 HZ-20 KHZ

SPEAKER

SIZE

1x15" Markbass Custom Black Line

IMPEDANCE 8Ω

POWER HANDLING

300W RMS (AES STANDARD)

FREQUENCY RESPONSE 40HZ TO 5KHZ

OTHERS

XLR LINE OUT

GROUND LIFT switch

PRE/POST EQ switch

EFFECT SEND/RETURN

TUNER OUT

OPTIONALS



COVER CMD JB PLAYERS SCHOOL

18.7"/47,5cm

18.9"/48cm

18.3"/46,4cm

35.72lbs/16,2kg



COMBO HEAD II - FRONT



COMBO HEAD II - REAR

"I was offered an endorsement with every amp company there is at some time or other. But as a bass player I only function at the level of tone, which was something that I personally couldn't find in any amp for many years. Everyone builds great equipment, but, without that one all-important addition (in my opinion) which is great tone. Markbass sent me a 15 inch bass cabinet that simply changed my musical life in a moment. I so fell in love with the sound of this amp that Marco De Virgili, the head of Markbass, named it the Jeff Berlin combo and sells it worldwide. It is a standard produced cabinet except that I asked that the tweeter be removed from this line as I really hate the tweeter sound."

Jeff Berlin
signature

CMD 151 P

Markbass artist **Jeff Berlin** has finally found the **tone** he's been searching for. And although we can't guarantee that Jeff's Signature Combo will make you sound like him, **it will definitely make you sound more like you!**

Jeff Berlin's signature combo has **top-quality 15" tone** and **no tweeter**. Traditionally 15" speakers have lacked detail, making pitch clarity an issue, but the **15" Markbass custom speakers** have incredible fidelity—something needed and appreciated by discriminating bass virtuosos like Jeff Berlin!
Easily upgrades to a 500W rig with the addition of a New York 151 cabinet.

FEATURES

POWER

500W @ 4Ω / 300W @ 8Ω



CONTROLS

GAIN

MASTER VOLUME

LINE OUT LEVEL

EQUALIZATION (± 16 DB)

LOW: center frequency 40 Hz

LOW MID: center frequency 360 Hz

HIGH MID: center frequency 800 Hz

HIGH: center frequency 10 kHz

FILTER SECTION

VPF

(VARIABLE PRE-SHAPE FILTER):

CENTER FREQUENCY 380 HZ

VLE

(VINTAGE LOUDSPEAKER EMULATOR):

FREQUENCY RANGE 250 HZ-20 KHZ

SPEAKER

SIZE

1x15" Markbass Custom

IMPEDANCE 8Ω

POWER HANDLING

400W RMS (AES STANDARD)

FREQUENCY RESPONSE 40HZ TO 5KHZ

OTHERS

XLR LINE OUT

GROUND LIFT switch

PRE/POST EQ switch

EFFECT SEND/RETURN

TUNER OUT

OPTIONALS



COVER CMD 151 P

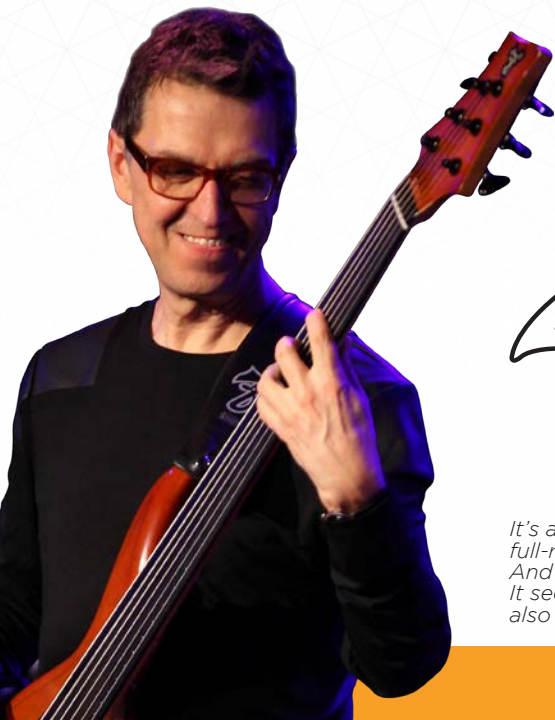
CMD SUPER COMBO K1

The new **ALAIN CARON** signature **CMD SUPER COMBO K1** has been developed respecting Alain's high standards.

This **3-ways combo** speaker configuration features a **Markbass custom 12"** speaker for **punchy low end**, a special new **5" speaker** with an **awesome definition in the mids** and a **1" compression driver** for **smooth, crispy highs**.

Its high-power head has **simple, intuitive** and **effective controls** and gets amplified by a powerful **1000W MPT** power amp, boasting **plenty of power** with **incredible dynamics** at any volume you play!

Top-quality sound, incredible power, simple and effective controls... make this combo **SUPER!**



Alain Caron
signature

*It's amazing that you can get such a powerful, warm, clear and defined sound, with full-range frequency response, out of a very lightweight amp and speaker cabinet. And the most important things: I hear the real sound of my bass. It seems that Markbass has not only listened carefully to their amps, but they have also listened to bass players! **Alain Caron***



FRONT

FEATURES

POWER

1000W @ 4Ω / 600W @ 8Ω



CONTROLS

GAIN

MASTER

LINE OUT LEVEL

EQUALIZATION (± 16 DB)

LOW: center frequency 40 Hz

LOW MID: center frequency 360 Hz

HIGH MID: center frequency 800 Hz

HIGH: center frequency 10 kHz

FILTER SECTION

VPF (Variable Pre-shape Filter):

center frequency 380 HZ

SPEAKER

SIZE

1x12" + 1x15" Markbass Custom +

1" voice coil compression tweeter

IMPEDANCE 8Ω

POWER HANDLING

800W RMS (AES STANDARD)

CROSSOVER FREQUENCY

1.5 KHz / 5.5 KHz

FREQUENCY RESPONSE 40 Hz to 20 KHz

OTHERS

XLR LINE OUT

GROUND LIFT switch

PRE/POST EQ switch

EFFECT SEND/RETURN

TUNER OUT



FRONT



REAR

Alain Caron
signature

COMBO 121 LITE

Top-level sounding combo designed with bass legend **Alain Caron**, the **COMBO 121 LITE** is a powerful **bi-amp** combo, with a **300W** power amp for the new compression driver, and **500W** power amp for the 12" speaker with maximum **fidelity, headroom** and **dynamics!**

Alain Caron is known for his high standards, and the components in this combo were carefully chosen to reach those standards.

FEATURES

POWER

500W (woofer) + 300W (tweeter)



CONTROLS

GAIN

MASTER VOLUME

EQUALIZATION (± 16 DB)

LOW: center frequency 40 Hz

LOW MID: center frequency 360 Hz

HIGH MID: center frequency 800 Hz

HIGH: center frequency 10 kHz

FILTER SECTION

VPF (Variable Pre-shape Filter):

center frequency 380 HZ

VLE (Vintage Loudspeaker Emulator):

frequency range 250 Hz-20 kHz

SPEAKER

SIZE

1x12" Markbass Custom +

1" compression driver

CROSSOVER FREQUENCY 3.5 KHz

FREQUENCY RESPONSE 40 Hz to 20 KHz

OTHERS

AUX IN

PHONES OUT

XLR LINE OUT

GROUND LIFT switch

Pre/Post EQ /Post Master

(Post EQ mode) switches

EFFECT SEND/RETURN

FX LOOP BYPASS

(footswitchable)

MUTE (footswitchable)

TUNER OUT

OPTIONALS



MARKWORLD
FOOTSWITCH DUAL



Alain Caron
signature



SIDE



REAR

FEATURES

SPEAKER SIZE

1x12" + 1x5"

TWEETER

1" voice coil compression driver

CAB POWER HANDLING

(AES Standard)

800W - RMS

IMPEDANCE

8Ω

CROSSOVER FREQUENCY

1.5 KHZ / 5.5 KHZ

FREQUENCY RESPONSE

40Hz to 20kHz

SENSITIVITY

99 dB SPL

REFLEX

REAR

TRAVELER 123

This cabinet was created in collaboration with Markbass artist and bass legend **Alain Caron** to have an extremely high-fidelity, **real flat-response tone!**

To best achieve this, the chosen speaker configuration features a **Markbass custom 12"** speaker for **punchy low end**, a special new **5" speaker** with an **awesome definition in the mids** and a **1" compression driver** for **smooth, crisp highs**. The sound of this Alain Caron signature cabinet is **truly something special!**



REAR



TOP

MICROMARK 801

The Micromark 801 is still small enough to deliver the Markbass sound anywhere, but big enough to provide a fuller sound with plenty of bottom end! Its **volume** and **sound quality** are truly incredible for such a tiny practice amp.

The **Micromark 801** features a single yellow **8" Markbass custom speaker**.

The original (6") Micromark has been astounding people since its first introduction a few years ago, but this version is even more **sonically impressive**... and in fact, it can be connected to any 8 ohm cabinet to make an even louder 60W rig!

FEATURES

POWER

60W @ 4Ω / 50W @ 8Ω



CONTROLS

LEVEL

VPF (Variable Pre-shape Filter):

center frequency 380 HZ

SPEAKER

SIZE

1x8" Markbass Custom

IMPEDANCE

8Ω

POWER HANDLING

200W RMS (AES STANDARD)

CROSSOVER FREQUENCY:

3.5 KHz

FREQUENCY RESPONSE:

60 Hz to 8 KHz

OTHERS

AUX IN

HEADPHONES OUT

XLR Line Out

GROUND LIFT switch

SPEAKER ON/OFF

OPTIONALS



COVER 801



REAR



TOP

MINIMARK 802

The Minimark has been astounding people since its first introduction at NAMM some years ago. The **Minimark 802** is even more **sonically impressive**, with an incredible **warm** and **focused sound** thanks to **the two 8" custom woofers** and an onboard **piezo tweeter**.

The Minimark 802 is a **brilliant choice** for **rehearsing, practicing, teaching** and **recording** and it can be used also on **gigs**, of course! It is also **ideal for double bass** and acoustic bass, with a **faithfully reproduction** of acoustic instruments. Any comparative test with other competitors small combos found the Minimark 802 triumphant, its **full sound with plenty of bottom end** has not rivals.

FEATURES

POWER

250W @ 4Ω / 150W @ 8Ω



CONTROLS

LEVEL

VPF (Variable Pre-shape Filter):

center frequency 380 HZ

VLE (Vintage Loudspeaker Emulator):

frequency range 250 Hz-20 kHz

SPEAKER

SIZE

2x8" Markbass Custom + Tweeter Piezo

IMPEDANCE

8Ω

POWER HANDLING

400W RMS (AES STANDARD)

CROSSOVER FREQUENCY:

3.5 KHz

FREQUENCY RESPONSE:

53 Hz to 18 KHz

OTHERS

AUX IN

HEADPHONES OUT

XLR LINE OUT

GROUND LIFT switch

SPEAKER ON/OFF



REAR



TOP

MINI CMD 121 P

Our **flagship** combo has changed the bass amp market forever. Never have bassists been able to get such **great tone** and **volume** from such a **light** and **portable amp**.

After years from its initial release in the 2005, this combo continues to lead the pack when it comes to big sound from a **small package**. The sound that comes from this amp simply does not match what you see when you look at such a small cube.

If you add the **New York 121** to the **Mini CMD 121P** combo, you'll have a **500W** 2x12" stack able to fill a large venue with headroom to spare.

FEATURES

POWER

500W @ 4Ω / 300W @ 8Ω



CONTROLS

GAIN

MASTER

LINE OUT LEVEL

EQUALIZATION (±16 DB)

LOW: center frequency 40 Hz

LOW MID: center frequency 360 Hz

HIGH MID: center frequency 800 Hz

HIGH: center frequency 10 kHz

FILTER SECTION

VPF (Variable Pre-shape Filter):

center frequency 380 HZ

SPEAKER

SIZE

1x12" Markbass Custom + Tweeter Piezo

IMPEDANCE

8Ω

POWER HANDLING

400W RMS (AES STANDARD)

CROSSOVER FREQUENCY:

3.5 KHz

FREQUENCY RESPONSE:

45 Hz to 18 KHz

OTHERS

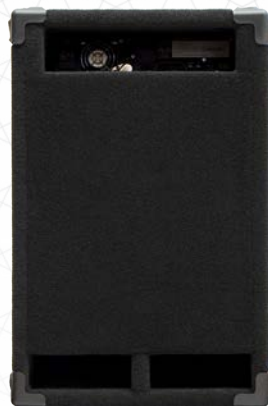
XLR Line Out

GROUND LIFT switch

PRE/POST EQ switch

EFFECT SEND/RETURN

TUNER OUT



REAR



FRONT

CMD 121 H

The CMD 121H is a more “hi-fi” alternative to the Mini CMD 121P combo, its slightly larger size contributes to its excellent headroom and full bottom end making it effective as a standalone unit, and its 1” compression driver and custom horn give it a clear, natural sounding high end.

This combo is designed for bass players who need power, portability and top performance!
Easily upgrades to a 500W rig with the addition of a New York 121 or Traveler 121H cabinet.

FEATURES

POWER

500W @ 4Ω / 300W @ 8Ω



CONTROLS

GAIN

MASTER VOLUME

LINE OUT LEVEL

EQUALIZATION (± 16 DB)

LOW: center frequency 40 Hz

LOW MID: center frequency 360 Hz

HIGH MID: center frequency 800 Hz

HIGH: center frequency 10 kHz

FILTER SECTION

VPF (Variable Pre-shape Filter):

center frequency 380 HZ

VLE (Vintage Loudspeaker Emulator):

frequency range 250 Hz-20 kHz

SPEAKER

SIZE

1x12” Markbass Custom +

1” compression driver with custom horn

IMPEDANCE

8Ω

POWER HANDLING

400W RMS (AES STANDARD)

CROSSOVER FREQUENCY:

3.5 KHz

FREQUENCY RESPONSE:

45 Hz to 20 KHz

OTHERS

XLR Line Out

GROUND LIFT switch

PRE/POST EQ switch

EFFECT SEND/RETURN

TUNER OUT



FRONT



REAR

CMD 102 P

This **front-ported 2x10"** combo is a **great option** for **gigging bassists** who want to **cut through the mix** without a big rig. The more aggressive tone of the 10" speakers means you can get what you need with this combo by itself, but it does **also stack with** any 8 ohm **Traveler** or **Standard cab.** for **more volume** and **headroom.**

The **CMD 102P** combo is **perfect for any situation.** The **angled cabinet design** allows the unit to be used either as a **floor monitor** or in **standard position,** which is handy for many applications.

FEATURES

POWER

500W @ 4Ω / 300W @ 8Ω



CONTROLS

GAIN

MASTER VOLUME

LINE OUT LEVEL

EQUALIZATION (± 16 DB)

LOW: center frequency 40 Hz

LOW MID: center frequency 360 Hz

HIGH MID: center frequency 800 Hz

HIGH: center frequency 10 kHz

FILTER SECTION

VPF (Variable Pre-shape Filter):

center frequency 380 HZ

VLE (Vintage Loudspeaker Emulator):

frequency range 250 Hz-20 kHz

SPEAKER

SIZE

2x10" Markbass Custom + Tweeter Piezo

IMPEDANCE 8Ω

POWER HANDLING

400W RMS (AES STANDARD)

CROSSOVER FREQUENCY 3.5 KHz

FREQUENCY RESPONSE 40 Hz to 18 KHz

OTHERS

XLR Line Out

GROUND LIFT switch

PRE/POST EQ switch

EFFECT SEND/RETURN

TUNER OUT

OPTIONALS



COVER CMD 102 P



TOP



REAR

MINI CMD 151 P

The **Mini CMD 151P** is the **best-sounding** and **most compact 1x15"** combo out there, delivering **300W** of power through a single **Markbass custom neodymium speaker** and **piezo tweeter**. **Highly portable** and **astoundingly loud** for its size, this combo gets even louder when connected to an extension cabinet, most effectively the New York 151.

This combo 15" speaker gives a **nice low-mid emphasis** that is well suited to **blues, roots music, old rock and roll** and more. Fifteen-inches speakers used to sound big and dumb, lacking definition... **But our 15s custom-made speakers, will change the way you think about speaker sizes!**

FEATURES

POWER

500W @ 4Ω / 300W @ 8Ω



CONTROLS

GAIN

MASTER VOLUME

LINE OUT LEVEL

EQUALIZATION (± 16 DB)

LOW: center frequency 40 Hz

LOW MID: center frequency 360 Hz

HIGH MID: center frequency 800 Hz

HIGH: center frequency 10 kHz

FILTER SECTION

VPF (Variable Pre-shape Filter):

center frequency 380 HZ

VLE (Vintage Loudspeaker Emulator):

frequency range 250 Hz-20 kHz

SPEAKER

SIZE

1x15" Markbass Custom + Tweeter Piezo

IMPEDANCE 8Ω

POWER HANDLING

400W RMS (AES STANDARD)

CROSSOVER FREQUENCY 3.5 KHz

FREQUENCY RESPONSE: 45 Hz to 18 KHz

OTHERS

XLR Line Out

GROUND LIFT switch

PRE/POST EQ switch

EFFECT SEND/RETURN

TUNER OUT

OPTIONALS



COVER CMD JB PLAYERS SCHOOL



REAR

FEATURES

CONTROLS

GAIN
THRESHOLD
RATIO
ATTACK
RELEASE
VOLUME

ON/OFF SWITCH

REAR PANEL

INPUT jack
OUTPUT jack
POWER jack (DC 12V)

TECHNICAL SPECS

INPUT IMPEDANCE
300 Kohm
GAIN
0 ÷ +16dB
THRESHOLD
30mVp ÷ 1,8 Vp
RATIO
1:1 ÷ 1:? (hard limiter)
ATTACK
2 ÷ 50 ms
RELEASE
100 ÷ 750 ms
OUTPUT IMPEDANCE
100 ohms
POWER REQUIREMENTS - DC input
+12VDC / 600mA minimum
TUBE
1x ECC81

COMPRESSORE

COMPRESSORE is no mere stomp box... it's a **state-of-the-art** compression tool. It features gain, threshold, ratio, attack, release and volume **individual controls**, that you would normally find on outboard studio compressors. Although it's **very easy** and **practical to use**, it may just be the finest **TUBE** compressor pedal ever created!

FEATURES

INPUT

1x ¼" mono jack

INPUT IMPEDANCE

200 KΩ

OUTPUTS

2x ¼" jack mono (mono L , stereo L+R)

PRESETS

12 (user modifiable)

GAIN

10 ÷ +16dB

CUT FREQ

70 ÷ 14000 Hz

tone PRESETS

seven factory presets (1-7)

one user presets (8)

POWER REQUIREMENTS

DC input +12VDC / 550mA minimum



REAR



CONTROLLER

SUPER SYNTH

The SUPER SYNTH turns your bass into a **synthesizer**—with seriously **cool sounds** and **no tracking delay!** It also doubles as a **digital octaver**, with both octave up and octave down layers.

The parameters of the pedal's presets can be modified using the **Markbass Pedal Controller software** (free and available for Mac and PC) and downloaded back to your pedal from your computer via the USB connection.

MB SUPER SIGNAL CABLE

The **MB cables** are much more than just well-built premium cables, they are made from the **highest quality components** and **tested one by-one** at our facility.

If you demand the best, here it is!



JACK/JACK 10.8 feet/3,3 mt
JACK/JACK 18.4 feet/5,6 mt



JACK 90/JACK 10.8 feet/3,3 mt
JACK 90/JACK 18.4 feet/5,6 mt

MB SUPER POWER CABLE

The **MB SUPER POWER CABLES** feature custom design 1/4" jumbo jack connectors hand-soldered in our laboratories at our factory in Italy, and hi-quality Neutrik © 2 Pole Speakon connectors.

Our high-flexible custom speaker cable offers best performance also at high output levels thanks to its large conductors cross-section (2x2mm), made of the purest copper.



JACK/JACK 3.28 feet/1 mt
JACK/JACK 6.56 feet/2 mt



SPEAKON/SPEAKON 3.28 feet/1 mt
SPEAKON/SPEAKON 6.56 feet/2 mt



JACK/SPEAKON
3.28 feet/1 mt



BASS KEEPER

Any busy bassist knows that the less trips to and from the car you have to make, the better. If you can carry all your gear in one trip, you're the envy of the whole band! Bulky things like stands are an inconvenience.

But this ingenious little Bass Keeper travels inside your Amp Bag pocket, or the back pocket of your gig bag, and then holds your bass securely to the side of your cabinet whenever you're not playing. No bassist should be without one of these handy accessories!



MARK STAND

When playing on a small stage and standing close to your rig, it can be difficult to hear yourself.

This ingenious little accessory shows how well Markbass understands the needs of working bass players. Especially on smaller stages, bassists often need to angle their cabinet upwards (in "monitor" position) in order to hear themselves adequately. This adjustable, folding stand fits anywhere and can support any Markbass cabinet.



TWEETER BOX

An optional accessory for the Micromark and Micromark 801 combos. Plug this little tweeter box for enhanced high-end response. The box has a velcro pad on the bottom, which allows you to affix it to the combo at whatever angle you like! To maximize the volume produced by your combo, place the combo on the floor for the fullest low end, and angle the tweeter toward ear-level so you can hear the more directional high frequencies.

FOOTSWITCHES

Mark World Custom footswitches single and dual options for controlling channel switching and EQ bypass / Mute on select Markbass and DV Mark heads.

MARKWORLD FOOTSWITCH SINGLE

Single Footswitch for Markbass CASA and Markbass Classic 300 and R 500 (discontinued) heads, and DV Mark DV Micro 50, DV Micro 50 II, DV Little GH 250, DV Little GH 250 Tube, DV Little 250M heads and DVC Guitar Friend 12 and DVC Guitar Friend 12 II combos.



MARKWORLD FOOTSWITCH DUAL

Dual Footswitch for Markbass Little Marcus heads, Big Bang, Combo 121 Lite and (discontinued) TA 501, TA 503, MoMark LMK and Studio Pre heads and DV RAW DAWG, DV Mark DV 40 II, Maragold heads and DV40 112, DV 40 212 combos.



RACK EARS KITS

If you need to rackmount your Markbass head for optimum protection, we have rack ears for it.

LITTLE MARK RACK EARS



BIG BANG RACK EARS



MULTIAMP RACK EARS



PEDAL CONTROLLERS

MULTIAMP MIDI PEDALBOARD

Sturdy, ultra-compact MIDI pedalboard for a complete and easy control of the Multiamp series.



MB EVO1 CONTROLLER

Pedalboard/controller for Markbass EVO 1.



MARK WORLD BAGS

MARKWORLD BAG XS

Bass bag with special pocket for Nano Mark 300 and other compartments for accessories (cables, music sheet, tuner, strings etc).



MARKWORLD BAG S

Amp bag for Markbass Big Bang and DV Mark DV RAW DAWG, DV Little GH 250, DV Little GH 250 Tube, DV Little 250M heads.



MARKWORLD BAG M

Amp bag for Little Mark and Little Marcus family heads.



MARKWORLD BAG LARGE

Amp bag for MB EVO 1 - DV EVO 1 and discontinued SA450/SD800/SD1200/TSA500/TA501/TA503/StudioPre StudioPre500/R500.



MARK WORLD BAGS

MARKWORLD MULTIAMP BAG

Amp bag for MULTIAMP SERIES.



MARKWORLD BAG LT

Amp bag for Markbass TTE 501, TTE 801 and DV MARK Little 40 II , Maragold heads.



NANO MARK 300 LEATHER BAG BROWN

Leather Amp bag for Markbass Nano Mark 300 - BROWN.



MB BASS BAG NANO POCKET

Bass bag with special pocket for Nano Mark 300 and other comparts for accessories (cables, music sheet, tuner, strings etc).



MARK WORLD COVERS

COVER MINI CMD 121 P

For the Mini CMD 121P combo
New York 121 cabinet.



COVER CMD 102 P

For the CMD 102P combo.



COVER CMD JB PLAYER SCHOOL

For the CMD JB Player School , Mini
CMD 151P combos and New York 151,
New York 151 Black cabinets.



COVER CMD 151 P

For the CMD 151 P combo - Jeff Berlin.



COVER TRAVELER 102 P

For the Traveler 102P cabinet.



COVER STANDARD 104 HF

Fits Standard 104 HF and
Standard 151 HF cabs.



MARK WORLD COVERS

COVER STANDARD 104 HR

Fits Standard 104 HR and Standard 151 HR cabs.



COVER STANDARD 102 HF

For the STANDARD 102 HF cab.



COVER 801

Cover for MICROMARK 801 DV Little Jazz / AC 801 P combos.



MARKBASS STRAPS

The MB clip lock bass straps are made with the finest Italian leather, they're classy and durable and you can choose between 2 colours and 2 sizes.

STRAP M MB BLACK STRAP L MB BLACK



STRAP M MB BROWN STRAP L MB BROWN



MARKBASS PICKS HOLDERS

The MB PICKS HOLDERS are made in Italy with the finest genuine italian leather, you can easily bring and keep inside your favourite picks. It also features a metal ring to use it as a key holder.

MB PICKS HOLDER BLACK



MB PICKS HOLDER BROWN

