



**MOUNTAINLAND**  
TECHNICAL COLLEGE

---

**INFRASTRUCTURE & GENERAL GOVERNMENT  
APPROPRIATIONS SUBCOMMITTEE**

**CLAY CHRISTENSEN, PRESIDENT**



# THE CHARGE

## Draft Findings & Recommendations to the Utah Higher Education Strategic Planning Commission

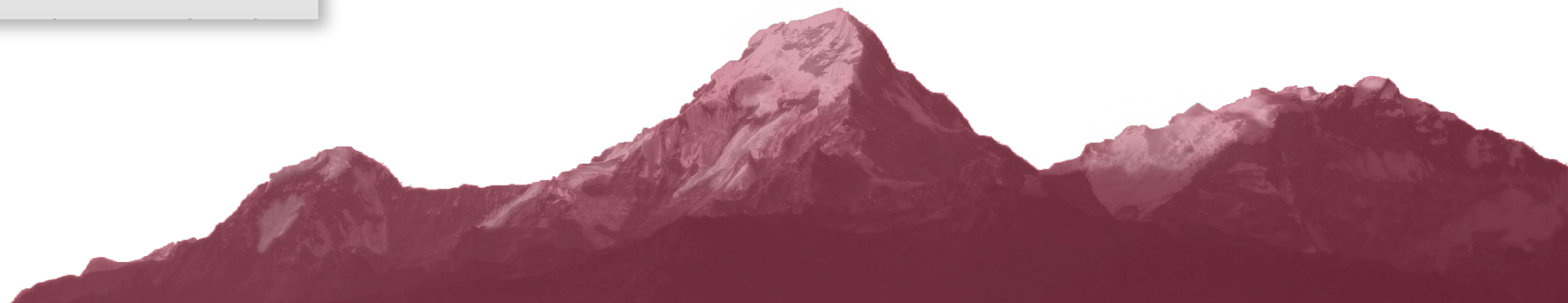
Salt Lake City, UT | September 24, 2019



### Major Priorities

- Recalibrate efforts to identify and address state and regional postsecondary education needs
- Create the capacity to lead implementation and report on the Strategic Planning Commission's work
- Shrink workforce gaps
  - Sub-baccalaureate level – skilled trades and technicians
  - Limited baccalaureate needs for an evolving economy
- Foster flexible delivery
  - Address capacity needs in Utah County
  - Address needs in rural parts of the state
  - To improve efficiency and service to students

- Foster flexible delivery
  - Address capacity needs in Utah County

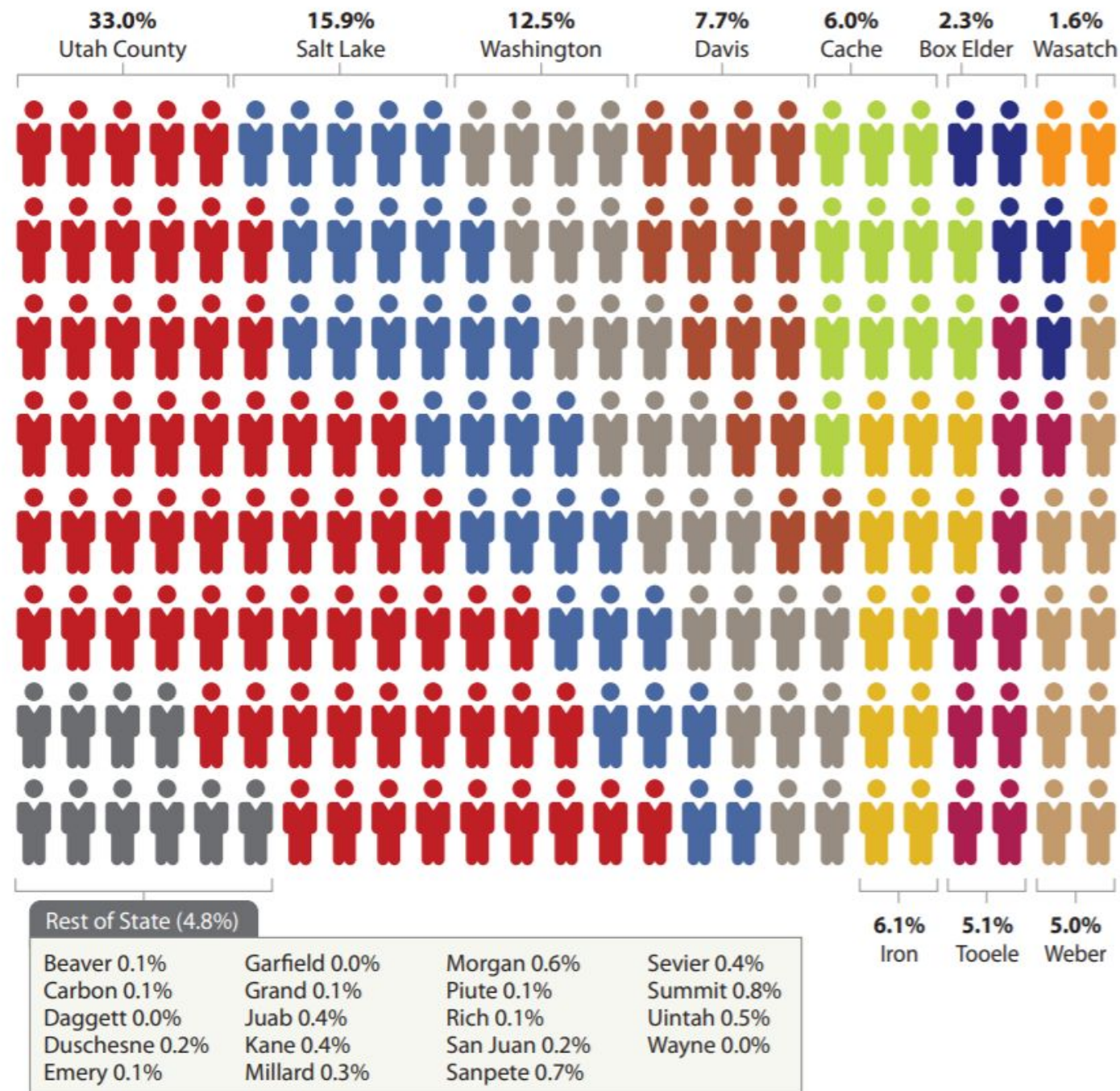




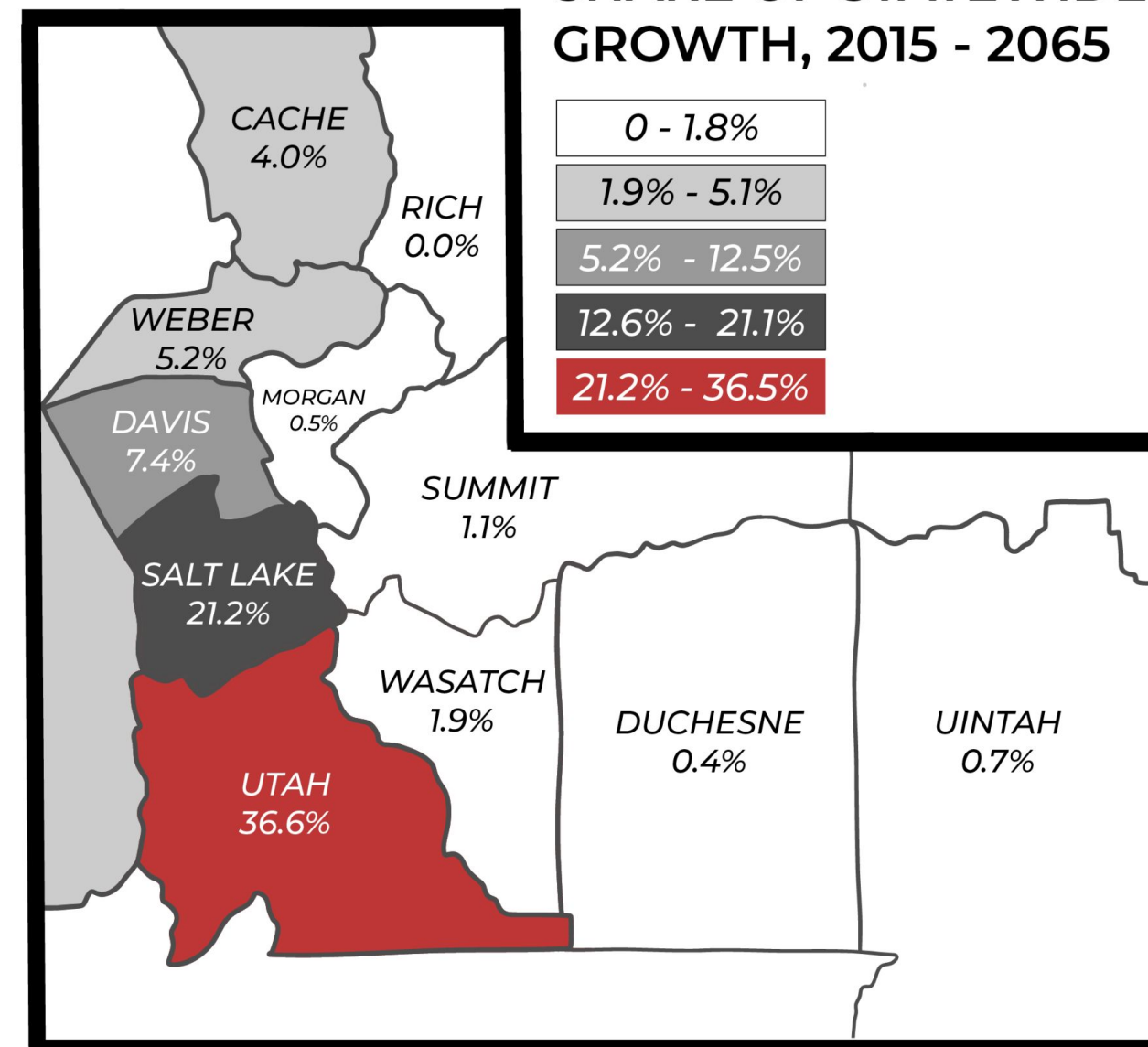
# UTAH COUNTY IS GROWING

Over one-third of growth in Utah between 2020 and 2021 was in Utah County

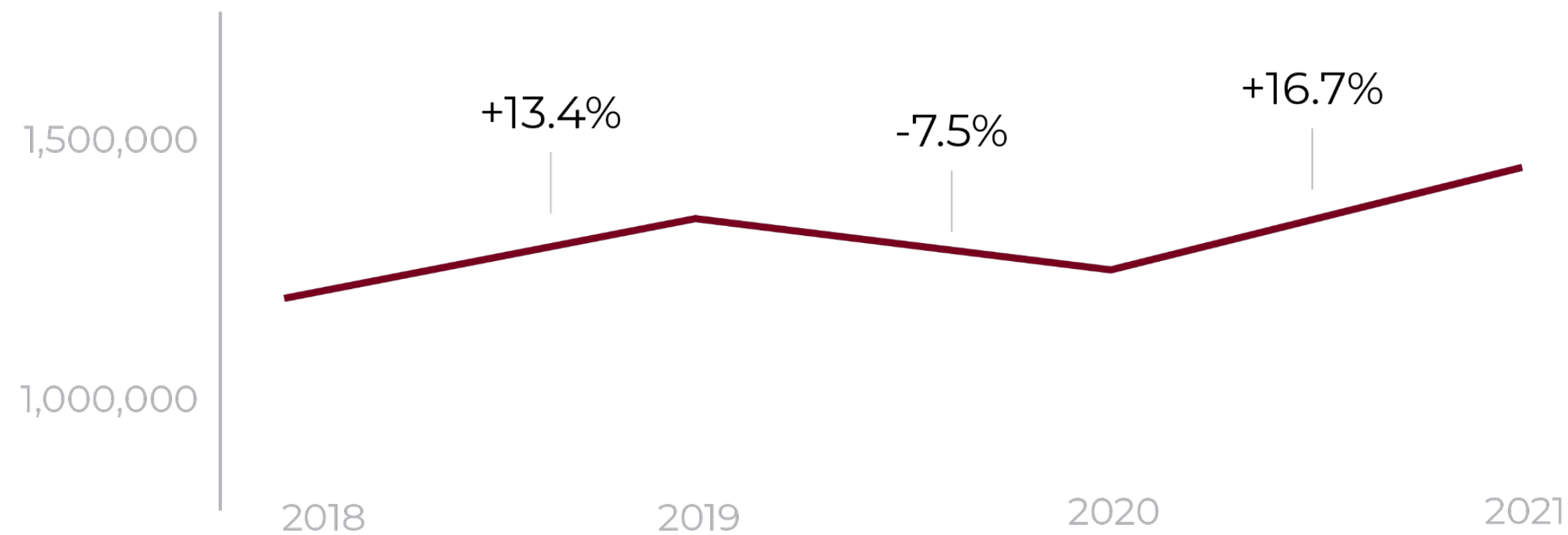
County share of state population growth, 2020-2021



SHARE OF STATEWIDE GROWTH, 2015 - 2065



# MTECH ENROLLMENT GROWTH



## TOTAL MEMBERSHIP HOURS:

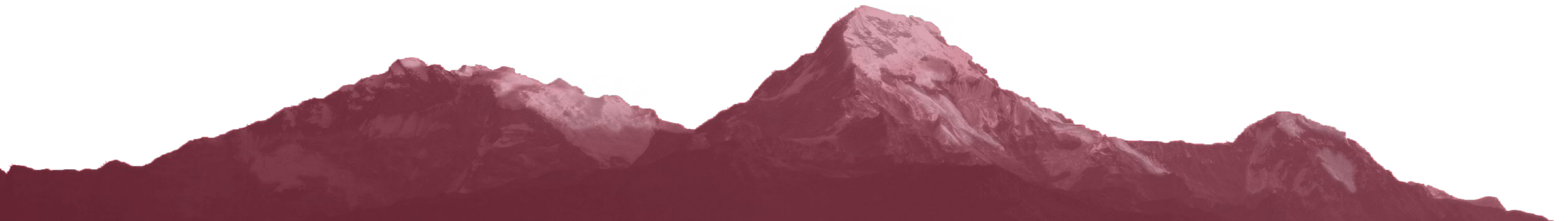
2018: 1,188,905

2019: 1,348,093

2020: 1,246,774

**2021: 1,454,420**

Membership hours have grown by over 35% since 2016





---

# PAYSON-AREA WORKFORCE NEEDS

## 2,100 Payson-Area Jobs Currently Available in 6 MTECH Program Areas

“Over 10 years, 20 Sectors in the Payson region are forecast to have double-digit employment growth, and 0 Sectors projected to contract” (JobsEQ, 2021).

SECTOR:	GROWTH:
<b>MANUFACTURING:</b>	<b>26.0%</b>
<b>HEALTHCARE:</b>	<b>46.7%</b>
<b>TRANSPORTATION:</b>	<b>30.6%</b>
<b>CONSTRUCTION:</b>	<b>31.7%</b>
<b>DATA ANALYTICS:</b>	<b>28.9%</b>
<b>FOOD SERVICES:</b>	<b>35.3%</b>



\* Sources: September 2021:  
JobsEQ: <http://chmuraecon.com/jobseq>  
ONET Online: <https://www.onetonline.org/>  
DWS: <https://jobs.utah.gov/wi/index.html>

\*\* Chmura Economics & Analytics. (2021, August 21). Perkins V Report, “Strengthening Career and Technical Education in Payson, Utah.” <http://chmuraecon.com/jobseq>



---

# CURRENT SPANISH FORK FACILITY

- The leased campus is at full capacity with unmet enrollment demand
- No additional space available for expansion of much needed programs
- Campus location is not served by public transportation





# **MOUNTAINLAND TECHNICAL COLLEGE**

## **PAYSON, UTAH**

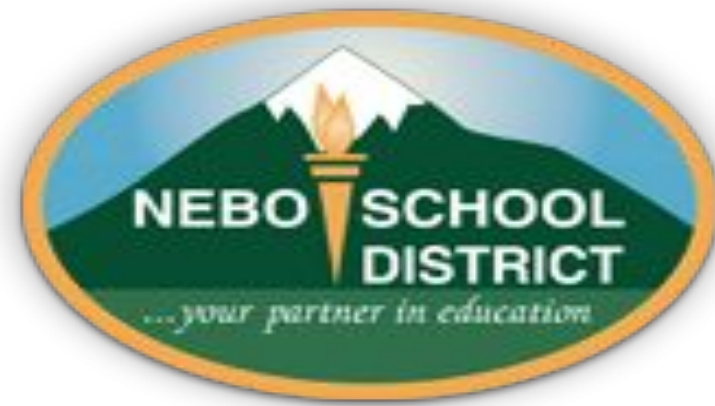
---

**#1 RANKED PROJECT OF THE UTAH SYSTEM OF  
HIGHER EDUCATION**

**FEATURED PRIORITY IN GOVERNOR COX'S  
BUDGET RECOMMENDATION**



# A COLLABORATIVE EFFORT





# MTECH, PAYSON: AN OVERVIEW

## ACCESSIBILITY

- New 84,000 sq. ft. facility doubles annual South County enrollment to 1,100
- Offers new public transportation options
- MTECH hallmark: localized services

## CURRENT WORKFORCE DEMAND

- 2,100 open jobs in Payson area related to MTECH programs
- Double-digit growth projections across all employment sectors

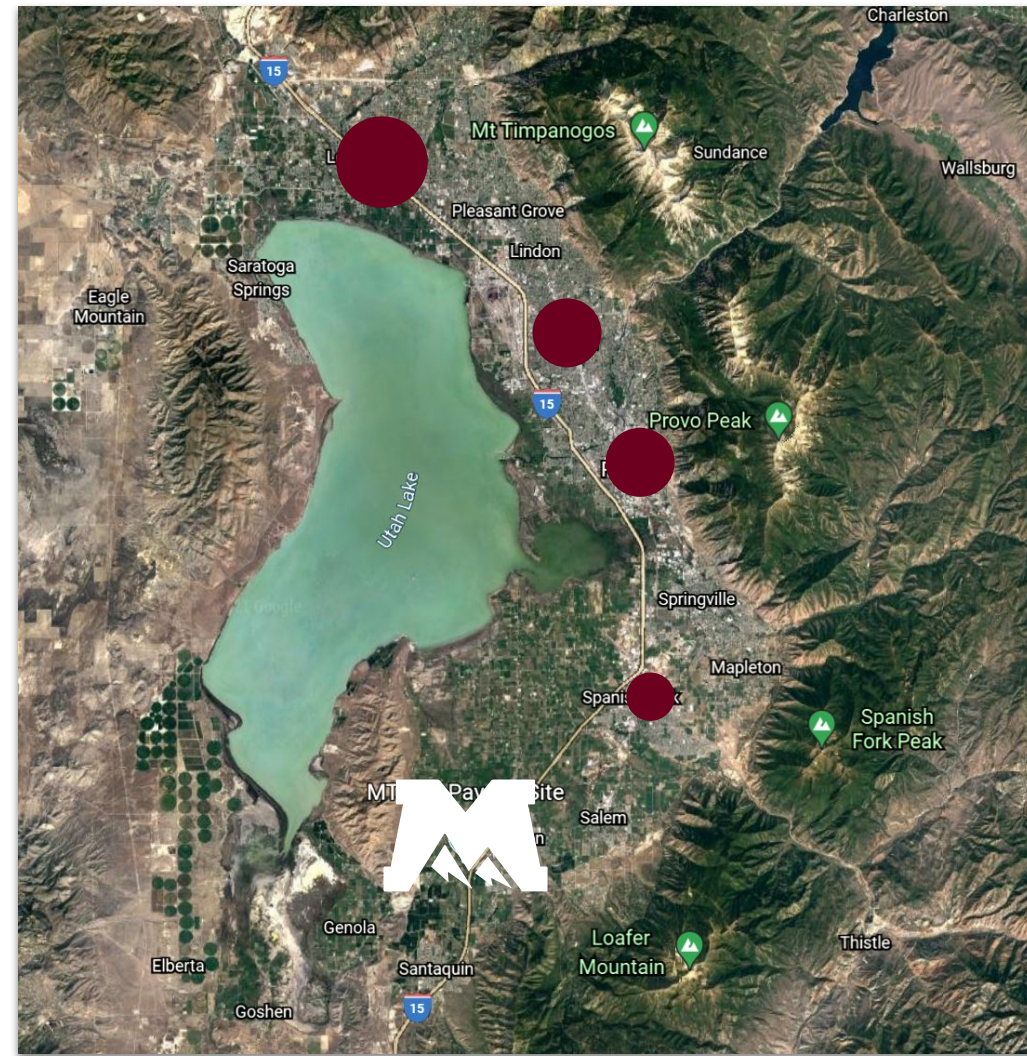
## AFFORDABILITY

- Land donation of \$4.5 million
- Economical, program-focused construction
- Equipment donations from corporate sponsors





# MTECH LOCATIONS IN UTAH COUNTY



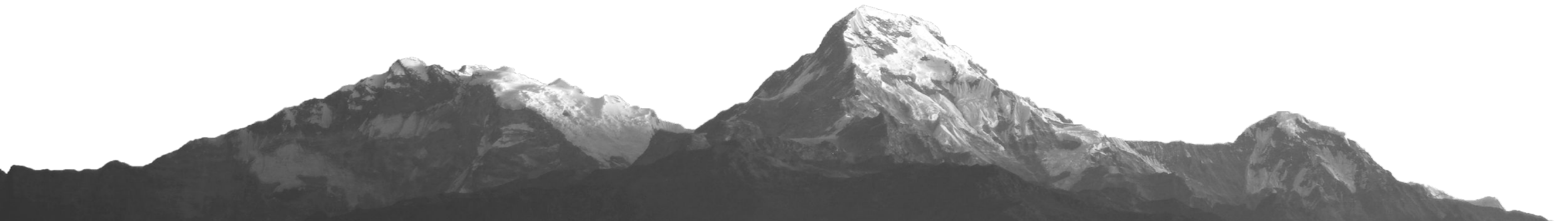


# MTECH- PAYSON

---

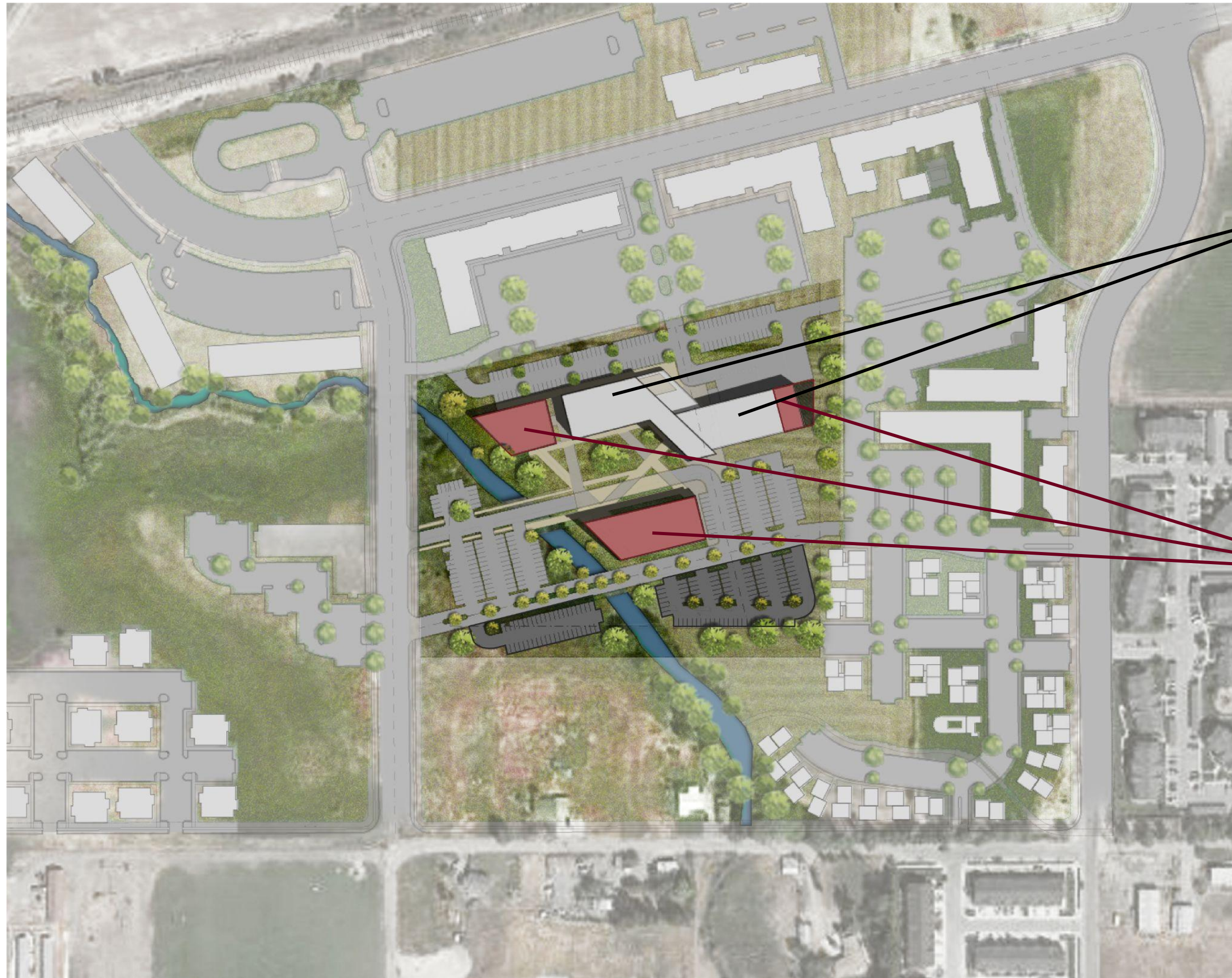


- > 1,100 students ready to go in Fall 2023
- > 10 Programs, shovel-ready:
  - Automotive & Trades
  - Manufacturing
  - Healthcare
  - Information Technology
- > \$115 M into the Utah economy- every year





# PLANNING FOR THE FUTURE



**PHASE 1 -**  
84,000 sq. ft.

**PHASE 2 (5-10 YEARS) -**  
~70,000 sq. ft.



# ECONOMIC IMPACT OF MTECH GRADUATES

2021 Spanish Fork Graduates: 351  
Annual Economic Impact: \$57,660,895

Projected Annual Payson Graduates: 700  
Projected Annual Impact: \$115,321,790





---

# CAPITAL DEVELOPMENT REQUEST

TOTAL PROJECT SPACE:	84,000 sq. ft.
DFCM CAPITAL BUDGET ESTIMATE:	\$52,422,000
TOTAL CONSTRUCTION COST:	\$37,251,623 - 78%
<i>Soft Cost Overall</i>	<i>\$15,170,376</i>
<i>13-Acre Land Donation</i>	<i>(\$4,500,000)</i>
TOTAL SOFT COSTS:	\$10,670,376 - 22%
<b>FY2023 REQUESTED FUNDING:</b>	<b>\$47,922,000</b>







**MOUNTAINLAND**  
TECHNICAL COLLEGE

