

Lebanon Township News

Fall 2020



September, October,
November

School is back in
session.

Please obey local
speed limits and
drive carefully!



Municipal Building
530 West Hill Road
(908) 638-8523

Hours:
Monday – Friday
8:00 AM – 4:30 PM

Bunnvale Library

News from the Library

Bunnvale Library received a pleasant and unexpected **Random Act of Kindness** in the book drop. Three young adults have started a new a group called “It’s the Little Things That Matter.” They thanked the library for providing books during this time so they could continue to read, “because sometimes it’s the little things that make big impacts on the world.” Thank you for the owl and extremely kind thoughts!



Bunnvale Library is open to the public at 25% capacity and we are **STILL DOING CURBSIDE PICKUP!**

Masks are mandatory when entering the Library. Social distancing of six feet is required.

The library has safety protocols in place. Book drop, doorknobs, computer keyboards and copiers are disinfected daily and after each use.

Please put **ALL** items in the book drop before entering the library. This will be our protocol until further notice. At this time the Library is not accepting any donations.

The **Anne Rambo Curio Cabinet** has been a staple at the library since the late 1980s. Patrons have been displaying their crafts, collectibles, talents and hobbies for over 30 years. For September, Doris Terris will display her paintings, a collection of Archie presented by Kara Martin for October, and Hurricane Lamp Collection compliments of Jeanette Sliker for November. If anyone has anything they would like to display in the cabinet – please call or stop by the library. The display changes monthly. There are slots open for 2021.

The Knitting and Crocheting Club will be suspended until further notice!

Due to Covid-19, the **Book Club** is temporarily meeting at the Lebanon Township Memorial Park pavilion the fourth Wednesday of each month at 7:00 pm. Tentatively, September’s book will be *Plain Truth* by Jodi Picoult. Please call the library for October and November’s book titles.

“Whatever the cost of our Libraries, the price is cheap compared to that of an ignorant nation.” WALTER CRONKITE

Hours: Wednesday 1:00 - 8:00 PM
Thursday & Friday 9:00AM - 5:00 PM
Saturday 9:00 AM - 2:00 PM
Telephone: (908) 638-8523 x401

Memorial Park Committee

Memorial Park Happenings

You may have noticed machines moving dirt at Memorial Park. Wondering what is happening? Several exciting things are in the works. First, we are relocating the volleyball courts. Our popular “beach sand” volleyball courts will soon be near the concession stand on the parcel along Bunnvale Road. Many thanks to V.A. Spatz and Sons for moving the earth for us and preparing the site.

Once the volleyball courts are moved, we will use that original site for our Memorial Park stage. This outdoor stage project was initiated by a group of Lebanon Township citizens to honor and remember long-time resident, Township Committee member, former mayor, and Park Committee member Pat Shriver. Pat was the heart of Lebanon Township and found numerous ways to improve and give back to her community. In fact, she was one of the driving forces behind the creation of Memorial Park, so it is fitting that we have an onsite, permanent reminder of her dedication and efforts that made our park possible.

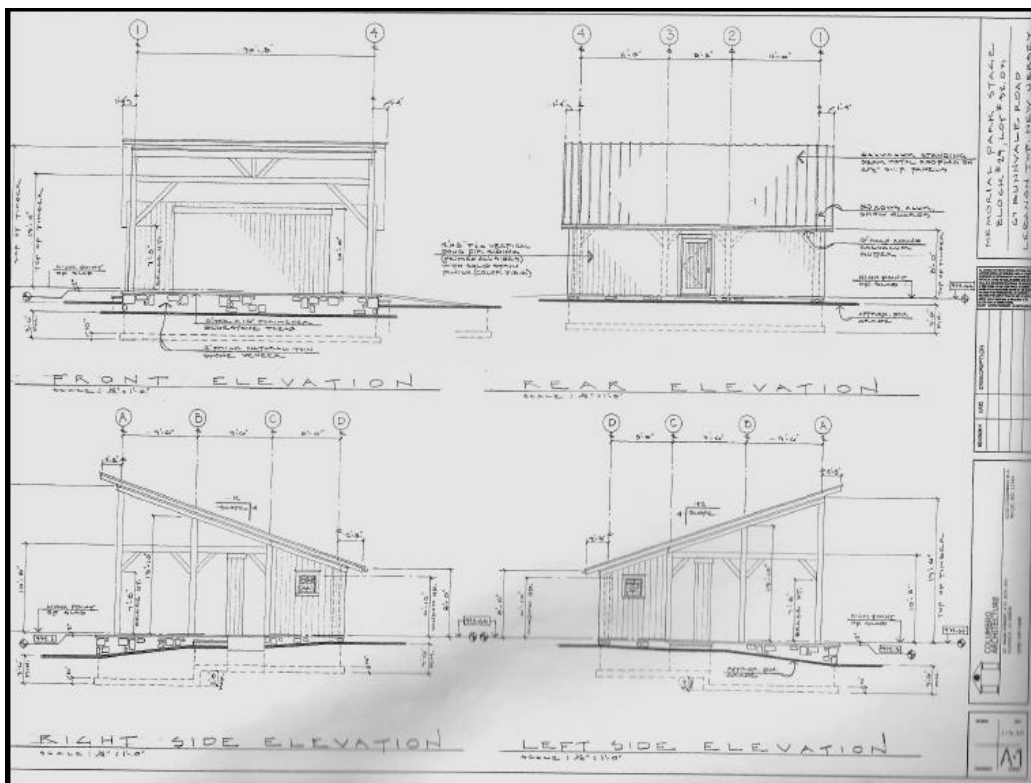
Once completed, the stage will provide another means of bringing our community together and will be used for band performances at Fall Fest, school concerts and graduations, and performances by other community groups throughout the year (Summer Theater in the park, anyone?). The beautiful design for the stage was created by Lebanon Township resident and architect Ezio Columbro of Columbro Architecture, who generously donated his talents to the project. The handsome rustic wood construction will complement the pavilion and

concession stand in design and will include lighting and the ability to hook up to any sound system. While we are still raising the funds necessary to build the stage, the preparation of the site will begin this summer with the goal of beginning construction in March of 2021 and completing it April 2021 (weather permitting). To date, we have raised close to \$13,000 of the total \$100,000 needed to see the project to completion.

On a smaller note, we have also purchased and constructed several new picnic tables for the park that will be used in the playground area to provide our families using the park with a comfortable spot to sit and snack.

Finally, we have earmarked funds for a “refresh” of the playground. We are currently working with the playground designer who created the original plans for our beloved “Caterpillar Cove” to select new equipment and replace some of our well-loved and played-out pieces. Stay tuned!

Since no tax dollars are used to develop our park, Friends of Memorial Park is grateful for the ongoing support of our community that makes all of our park improvement possible. Donations to our park can be made year-round by making your check payable to: **Friends of Memorial Park** and dropping it off at the Municipal Building or mailing it to 530 W. Hill Road, Glen Gardner, NJ 08826, Attn: Kim Jacobus. *If you would like to earmark your donation to a specific project, like the Pat Shriver outdoor stage, please note that with your donation.* As a non-profit 501(c)(3) entity, Friends of Memorial Park is eligible for corporate matching donations and all donations are tax-deductible as permitted by current tax law.



Lebanon Township Board of Health

Getting Back in Shape By Nick Avallone, M.D.

Over the past couple of months, orthopedic and primary care offices have been seeing quite a few patients with a great desire to get back in shape. Some patients have noticed a resurgence of pain in a joint that had suffered a previous injury. Other individuals are coming to see physicians with new injuries from their recently started workout routine. Safely getting back to an active lifestyle after months of quarantine during the pandemic is important for our physical and mental well-being.

It is well documented through numerous studies that regular exercise has many health benefits that include a reduction in cardiovascular disease, achieving a healthier body mass index, improved mood and increased life expectancy. As gyms have closed during the pandemic, many workout routines were disrupted leading to weight gain and a relatively deconditioned state. Arthritic or previously injured joints have not fared well during this time of decreased activity. Just like gears in a car or a bike, an arthritic joint becomes stiff when not in use. This rigidity often leads to painful symptoms and discourages the individual from wanting to exercise. Unfortunately, further inactivity due to pain can lead the patient on a downward spiral until a guided exercise program is initiated.

When a joint suffers a flare-up, it is prudent to schedule a visit with one's primary care physician or orthopedic surgeon. The physician will typically order an x-ray to assess for arthritis and other bony abnormalities. The provider will also take a history and perform a physical examination. Most issues will be correctly diagnosed without advanced imaging (such as an MRI or CT scan) and are often treated successfully with a structured physical therapy regimen. The physical therapist usually spends an hour with the patient 2-3 times per week teaching exercises that are to be performed by the patient at home the other days of the week. Proper execution of these exercises is important to improve the efficacy of the therapy and helps prevent injury. Patients are often happily surprised at how successful 4 to 6 weeks of dedicated physical therapy can be in relieving their pain and improving their mobility.

If a person is considering starting an exercise routine, a few helpful pieces of advice are important to remember. Start slowly and remember that getting into shape is a marathon and not a sprint. Often patients will rush into ramping up an exercise regimen without first putting down a good base of flexibility training and gradual cardiopulmonary conditioning. It is often a good idea to check with one's primary care provider to see if it is safe to start an exercise routine, particularly if the person has a history of heart or lung problems. A good cool down after exercise that includes stretching helps minimize muscle soreness by removing lactic acid that can build up during a rigorous work-out. Staying well hydrated before, during and after a work-out also improves performance and decreases both recovery time

and muscle soreness. It is safest to perform weight training by doing high repetitions of low weight. Typically, one should aim for 3 sets of 10-15 well executed repetitions for most exercises as higher weights can cause tendon and muscle injuries, particularly in men over 40 years of age.



GROENDYKE ASSOCIATES
AN INDEPENDENT INSURANCE AGENCY

Phone: (908) 638-8558
Toll-free: (800) 476-7466
Fax: (908) 638-8233
Email: customerservice@groendyke.net

www.groendyke.net

 **SELECTIVE®**
Response is everything.

- AUTOMOBILE INSURANCE
- HOMEOWNERS INSURANCE
- FLOOD INSURANCE
- BUSINESS INSURANCE
- CONTRACTORS INSURANCE
- LIFE & HEALTH INSURANCE

Headquarters: 295 County Road 513 • Califon, NJ 07830



Minglewood Kennels
Providing Quality Pet Care Since 1994

Boarding ♦ Grooming ♦ Training

(908) 832-2104
www.minglewoodkennels.com

Museum



News from the Museum ...

At the time of writing, we are yet unsure of when we can reopen our doors to the public. We hope to be open by the time you are reading this . . . but if not, did you know you can still visit the Museum for some outdoor activities?

For example, geocaching! If you are unfamiliar with what this is, it is an outdoor recreational activity where participants use a GPS or a free downloadable app to hide and seek small

containers, called “geocaches” or “caches” at specific locations all over the world. A typical cache is a small waterproof container that holds a logbook for participants to sign with their established code name and the date to prove that they found it. After signing the log, it must be placed back exactly where it was found. Several visitors have come to the Museum’s yard to find the hidden geocache . . . can you find it?

Have you ever seen the 2000 movie *The Patriot* starring Mel Gibson? It is a work of historical fiction but Mr. Gibson’s character was based on several real people from history; one of them being Lebanon Township’s own General Daniel Morgan. Read up on General Morgan and his important contributions to two of the most important American Revolutionary War victories at the historical marker in the Museum’s yard.

After you’ve brushed up on your Revolution history, walk a little further and enjoy the new exhibit in our three-seater outhouse. Did you know that two or three-seater outhouses like ours were not uncommon? Practicality was more important than modesty! The number of holes was based on the number of people who were going to be regularly using that particular privy. One to three holes of varying sizes were the norm and the smaller holes were for smaller children for safety’s sake! Learn more about the history of outhouses and toilet paper at our new display.

(Continued on page 5)



Museum

(Continued from page 4)

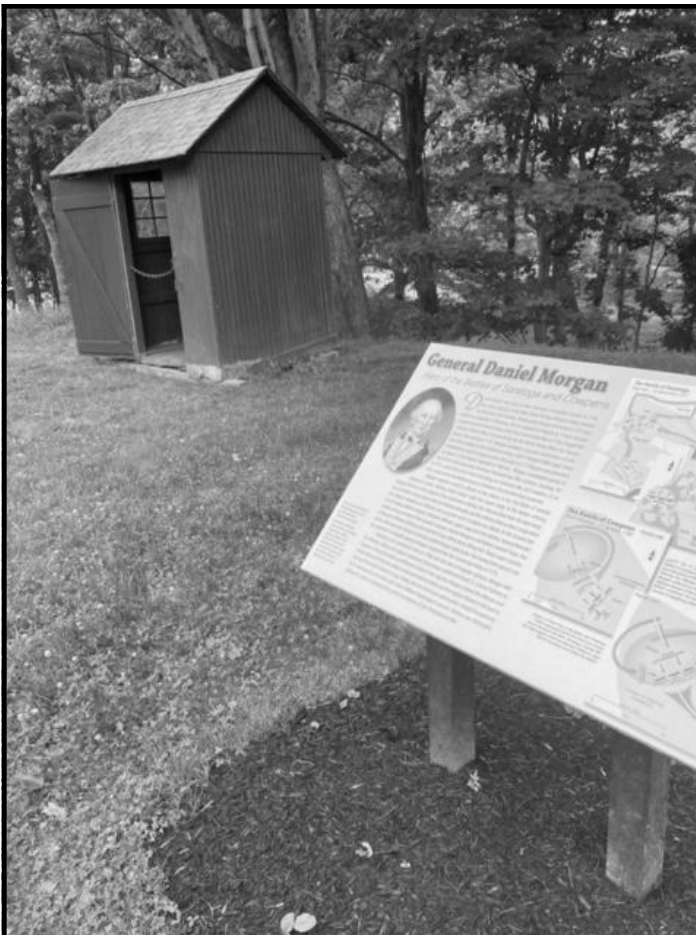
If you need a break after all that walking and learning, take a break at one of our picnic tables. Feel free to bring a picnic lunch or snack! You'll find the tables directly next to our very exciting new addition: The Carriage Shed Museum Annex.

Thanks to the fundraising efforts of the Squiers Point Historians of Lebanon Township, Inc., this beautiful new outbuilding has been constructed to offer additional exhibit space to showcase artifacts to the public. The Carriage Shed truly is an annex to the Museum. It has two distinct rooms which will both have permanent and potentially changing displays. In the larger room, visitors will find an antique bobsled which was generously donated by the Polt family and restored through funds raised by the Squiers Point Historians. This sled was used to transport children to school in Lebanon Township in the 1920s. As the Museum building itself is a former schoolhouse, an early school bus helps more fully illustrate the story of our local educational system.

Fireside Kitchen where she shared colonial recipes that she cooked using only antique cooking methods and supplies. The display includes items from the Museum's collection including the vintage stove that was previously unprotected in the Museum's yard. The stove's restoration is kindly being donated by Vintage Motor Car of Hunterdon.

Please be sure to follow us on social media or check our website for exact dates on Museum reopening and the Carriage Shed's Grand Opening!

** The Squiers Point Historians of Lebanon Township, Inc. is a 501(c)(3) not-for-profit corporation whose mission is to preserve, maintain and improve historical structures and artifacts in the Township of Lebanon in the County of Hunterdon in the State of New Jersey. New members from all municipalities are welcome to join year-round. Membership forms are available on their Facebook page: Squiers Point Historians of Lebanon Township or email Gina at museum@lebtwp.net to learn more.*



The smaller room will feature a display on the history of cooking, inspired by the Museum's first Curator, Dorothea Connolly. Besides her work at the Museum, Mrs. Connolly also had a public access television show and cookbook entitled



H.A.C. SERVICES
LLC.



HENRY CORDES
 phone: (908) 310-6356
 email: henrycordes28@gmail.com

71 Mackenzie Road
 Hampton, NJ 08827

SKID LOADER SERVICES



- SCRAP METAL REMOVAL
- BASEMENT | ATTIC | GARAGE | BARN CLEAN-OUTS
- HOME / OFFICE RENOVATION DEBRIS REMOVAL
- DAILY SKID STEER SERVICES

LAWN & CLEAN-UP SERVICES



- LAWN MOWING
- YARD CLEAN-UP
- HEDGE ROW CLEAN-UP
- FARM CLEAN-UP

10 AND 20 YARD
 DUMPSTERS AVAILABLE
 FOR SUMMER CLEAN-UP!



Historians

Circle H Ranch... “A Nude Ranch, Not a Dude Ranch”

CIRCLE H RANCH
DEWEY LANE R.D.
GLEN GARDNER, N.J. 08826
Phone Area Code 201
537-4105
EARL & LUCILLE HANSEN

* Plastic Domed Enclosure 75 x 100 feet.
* Air Heated to a Summer 80° to 125°
* It's New! It's Larger! It's Beautiful!
* Accommodates 500 People in Comfort.
* Green Grass Treats the Eye All Winter.
* Flowering Orchids Grow at Poolside.
* Palms and Other Tropical Vegetation.

POOL 30 x 60 Heated to 90° and Filtered
A TROPICAL PARADISE IN THE MOUNTAINS OF NEW JERSEY 1

Escape to paradise

Barry shared that his family knew about his membership at the ranch, each having a different reaction, some thinking he was crazy. He recalls other members who kept it a secret, mostly for fear of losing their jobs. When asked about the occupations of its members, he said there was “a little bit of everything, blue collar and white collar, handymen, office workers, policemen, lawyers, teachers, and business owners”.

The play performed regularly, “Barely Proper” subtitled “An Unplayable Play”, was a little known production written in 1929 by Tom Cushing. It's the story of Derek Leet, a young Englishman, and Frieda Schmidt, his German fiancée. He's come to “the drawing room of the Schmidt villa in the suburbs of Berlin on a warm June afternoon” to meet his future in-laws. Frieda's the nervous one, though, because she hasn't yet told Derek about her family of nudists. One of the first scenes begins with Frieda's two brothers walking on stage holding only tennis racquets, shocking Derek. He is stunned even more so when he sees Katrina, the maid (“She wears a cap, but that's all she wears”) and a friend of the family, Mitzi (“She only wears a pair of tennis shoes with rolled white socks”). Barry recalls it was a successful play at the ranch, with people coming from New York City by bus to watch. Afterwards, the visitors were invited to take a dip in the pool.

Lebanon Township...we all know it's a gem tucked into the hills of Hunterdon County. The air is pure and fresh, the views are picturesque, and the scenic back roads are dotted with farmsteads, a postcard perfect General Store, miles of trails, the quaintness of country life and...a nudist ranch? Yes! Beginning in the early 1960s and for about twenty years, Lebanon Township was home to a nudist ranch.

Lucille and Earl Hansen owned and operated the Circle H Nudist Ranch on Dewey Lane in the Township. They had cabin rentals, a dining hall, and activities like swimming, tennis, volleyball, and even skiing. They performed plays yearly and hosted a Miss Nude and Mr. Nude Contest.

Barry Plaxen, one of its members who also acted in and directed the infamous nude play “Barely Proper”, shared fantastic memories of his visits to the ranch. Barry lived and worked in Manhattan and visited nude beaches on Long Island. Deciding it was inconvenient to trek by train or bus to these nude beaches carrying his food, drinks, books, and more, he began looking into the nude resorts in New Jersey, first visiting one in Hackettstown. There he learned about Circle H, and because of his theatrical background, was intrigued to hear of the plays they performed at the ranch. So for \$25 a week Barry rented a little A-frame cabin from the Hansens. Provided was a bed, electricity and heater so he could stay during the winter. There were tent sites and families set up with small mobile homes. Meals were eaten in Lucille's dining room, where people would often gather and cook together. He recalls playing a lot of volleyball, which he said was THE sport of the nudist movement because women and children were able to participate.

CIRCLE H RANCH
P. O. BOX 607
CLAYTON, NEW JERSEY

PRICES

Membership.....	\$35.00
(includes A.S.A. dues)	
Tenting.....	\$1.00
(per day)	
	per season.....\$20.00
Ground Fees.....	\$1.00
(per person)	
Single Girls.....	\$8.00
(Donation) Dues, A.S.A.	
Meals will be according to local prices.	
Flatters will be served.	
Snacks will be served.	
Rooms.....	
Dorm.....	\$3.00
(per night)	
Double.....	\$6.00
(2 beds per room)	
Single Bed.....	\$3.00
Double Bed.....	\$6.00
Sleeping in car.....	\$1.00
(per night)	
Other arrangements can be made.	

* A GOOD PLACE FOR SUN & HEALTH*

Barry tipped us off to this fantastic video from 1968 when Lucille was a guest on “That Show” with Joan Rivers. Each episode had a theme, nudism in this case, and featured an expert on the topic and a celebrity guest (Johnny Carson). Check it out here: <https://tinyurl.com/y2vgkokv>.

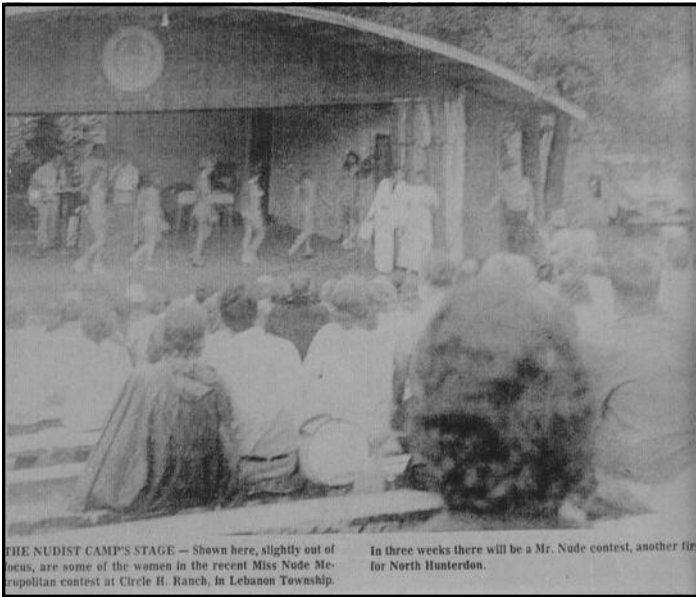
As the Hansens aged, they decided to sell the property and move to Florida, closing the ranch in the mid 1980s. We're grateful for those who've shared their memories, adults who recall as children riding their bikes to the ranch, binoculars in hand,

(Continued on page 7)

Historians

(Continued from page 6)

climbing trees to peer into the grounds, hoping to catch a glimpse of something so intriguing. Help us preserve the memories of this Township gem! Did you visit the ranch or attend the play? If you can add to the memories of the Circle H Ranch, send a sentence, a paragraph or more to Historians@lebtwp.net. Prefer to remain anonymous? Send a letter to the Township of Lebanon Museum, 57 Musconetcong River Road, Hampton, NJ 08827. We'd love to hear from you!

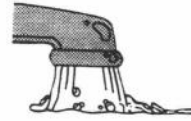


THE NUDIST CAMP'S STAGE — Shown here, slightly out of focus, are some of the women in the recent Miss Nude Metropolitan contest at Circle H Ranch, in Lebanon Township.

In three weeks there will be a Mr. Nude contest, another first for North Hunterdon.



Lucille and Earl Hansen, owners of the Circle H Ranch.



Clinton Water Treatment Services

Free Water Analysis
 Arsenic Filters Neutralizers Softeners Reverse Osmosis
 Filters Chlorinations Gross Alpha

908-537-7099

908-236-6359

PETER CICALEASE

2050 Rt. 31 north, Suite 2

Glen Gardner, NJ 08826 Fax 908-894-5012

MACKENZIE ELECTRIC

ELECTRICAL CONTRACTOR
 RESIDENTIAL ♦ COMMERCIAL
 INDUSTRIAL
 Lic# 13857

John J. MacKenzie

(908) 638-8534



Route 513 in Califon, NJ (908) 832-7510
www.happyfacenurseryschool.org

2½ YEAR PROGRAM

Our 2 1/2 -Year-Old Program offers a fun, warm, safe environment for young children to make friends and experience school for the first time. Emphasis is placed on sharing and cooperating in a group atmosphere. Themes are centered on nursery rhymes with games, activities, and simple projects to reinforce the rhyme. As soon as a child reaches 2 1/2 years of age, they are eligible for enrollment. A child may start at any time during the school year and does not need to be potty trained.

Meets Monday & Wednesday 9:00 - 11:30 am.

Sign up at ANY time! Call (908) 832-7510!

Recycling

Recycling News

Not only is recycling the right thing to do, it is also the law in New Jersey. Hunterdon County and Lebanon Township work together to try to make recycling convenient.

The Hunterdon County Residential Recycling Program is held at the Hunterdon County Transfer Station/Recycling Depot, 10 Petticoat Lane, Annandale. The Transfer Station is open Monday - Friday, 7:00 AM to 4:30 PM and Saturday, 7:00 AM to 12:45 PM. Please check their website for COVID-19 related closures.



ITEMS ACCEPTED FOR RECYCLING AT THE TRANSFER STATION:

- **Aluminum cans:** Only empty beverage cans will be accepted. Other aluminum items WILL NOT BE ACCEPTED.
- **Cardboard, chipboard & brown paper bags:** Corrugated, chipboard (boxboard) and brown paper bags will be accepted. Cardboard should be tied or placed in another cardboard container (box). Cardboard with food or food residue WILL NOT BE ACCEPTED.
- **Glass bottles and jars:** Food and beverage container glass with rings and caps removed will be accepted. All containers MUST be emptied and rinsed. Cups, drinking glasses, dishes, ovenware, window glass, lead crystal, TV tubes, light bulbs, mirrors or any other type of glass product WILL NOT BE ACCEPTED.
- **Hard covered books**
- **Junk mail & office paper:** Un-shredded junk mail and office paper will be accepted. Junk mail and office paper should be tied or placed in a cardboard container (box). Shredded or bagged junk mail and office paper WILL NOT BE ACCEPTED.
- **Newspaper:** Newspaper tied with string or twine will be accepted. Newspaper bound in tape or other materials WILL NOT BE ACCEPTED.
- **Paperback books**
- **Plastics bottles # 1-7:** Plastic bottles # 1-7 that originally contained liquids are accepted. All containers MUST be emptied and rinsed.
- **Telephone books**
- **Tin and bi-metal cans:** Are accepted if all food and other residue have been removed. Labels do not have to be removed.

Please check the recycling page of the Hunterdon County website, www.co.hunterdon.nj.us/recycling.html, for information about special county hazardous waste and electronics recycling events.

Recycling has Changed

Lebanon Township will no longer be holding the monthly Recycling Depot in the parking lot behind the Municipal Building. Instead, a recycling dumpster has been placed in the parking lot and is available for residents to drop off their recyclable materials at any time. The dumpster will be emptied on a weekly basis.

Please understand that it is **extremely important** that materials placed in the dumpster, are actually recyclable. The service provider scrutinizes the contents of the dumpster; if there are too many non-recyclable materials, none of the material will be recycled and will instead be sent to a landfill.

Please refer to the information below to determine whether or not something can be placed in the recycling dumpster. Detailed information is also available at <https://recyclingsimplified.com/recycling-basics/>.

DO Recycle these Items:

Glass bottles or jars with lids attached
Plastic bottles or jugs with lids attached
Metal cans
Flattened cardboard
Non-mixed paper – remove bubble wrap from padded envelopes and plastic windows from paper envelopes

DON'T Recycle these Items:

Plastic bags of any kind
Items which are wet
Items which contain food or food residue, including pizza boxes with grease residue
Bubble wrap or Styrofoam
Unattached lids – they are too small – instead, attach them to the bottle or jug they came from



Recycling

FREE TOWN-WIDE SHREDDING EVENT FOR TOWNSHIP RESIDENTS

**A safe and secure way to destroy
confidential documents**

Date: September 5, 2020
Time: 9:00 am to 12:00 noon
Location: 530 West Hill Road (Municipal
Building front parking lot)

Papers should be loose and dry – no rubber bands,
binders, metal fasteners, hanging folders, metal
book rings, or binder clips.

Staples, paper clips and manila file folders are
acceptable.

Shredding will be done on site by Absolute
Shredding from Hackettstown, NJ.

Any questions, call JoAnn on Fridays at
(908) 638-6964 x106



TOWNSHIP OF LEBANON FREE COMPUTER / ELECTRONICS AND SCRAP METAL RECYCLING EVENT

NOVEMBER 14, 2020

8:30 AM – 12:30 PM

TOWNSHIP OF LEBANON
DEPARTMENT OF PUBLIC WORKS
339 NEWPORT ROAD
GLEN GARDNER, NJ 08826

FOR MORE INFORMATION
908 (638-6964) x106 OR treasurer@lebtwp.net

ITEMS ACCEPTED (anything with a plug)

Computers, fax machines, stereo equipment, radios, TV's,
humidifiers, monitors, scanners, microwaves, dehumidifiers,
terminals, VCR's, VHS players, copiers, air conditioners,
space heaters, fans, telephones, laptops, typewriters, MP3
players, servers, equipment, large appliances and scrap metal.

NOTE: PLEASE REMOVE INK CARTRIDGE FROM
PRINTERS

**For items containing freon – proof of residency is required
(tax bill)**

WILL NOT ACCEPT

Light bulbs, smoke detectors, or carbon monoxide detectors

NOTE: Hard drive will be destroyed by Advanced Recycling.



Basking Ridge Electric Co, LLC
Electrical Contractor



Charles F. Fortenbacher
NJ Elec Lic. #10007

Shop: 25 Stonehouse Rd.
Basking Ridge, NJ 07920
baskingridgeelectric@gmail.com
24 hour emergency service

Office (908) 766-1846
Fax (908) 766-2220
Cell (908) 797-3866
Califon Area (908) 832-6228



421 Route 513
Califon, New Jersey 07830

Phone: (908) 832-7523
Fax: (908) 832-9473

Mary Beth Hamorski, VMD
Jeff Salatiello, VMD

www.califonanimalhospital.com

Recycling

HUNTERDON COUNTY FREE ELECTRONIC WASTE RECYCLING EVENTS



EVENTS ARE HELD RAIN OR SHINE
9:00 a.m. to 1:00 p.m.
314 State Route 12, Hunterdon County
Complex, Flemington, NJ 08822
(908) 788-1351

Saturday, September 26, 2020

WE WILL ACCEPT: **WE WILL NOT ACCEPT:**

- | | |
|---|---|
| <ul style="list-style-type: none"> • Desktop Printers • Desktop Fax Machines • Computers • Computer Monitors • Televisions • DVD Players • Radios • Cell Phones • Digital Cameras • Keyboards | <ul style="list-style-type: none"> • Air Conditioners • Dehumidifiers • Refrigerators • Microwaves • Propane Tanks • Hazardous Wastes |
|---|---|

FOR LARGER QUANTITIES OR COMMERCIAL DISPOSAL OF COMPUTERS CONTACT: Newtech Recycling Inc. at (732) 564-3110

Hazardous Waste will be accepted during the County's Hazardous Waste Clean-up Program.

OTHER DISPOSAL OPTIONS FOR ELECTRONICS:

- NJ DEP's e-waste website at: <http://www.nj.gov/dep/dshw/ewaste/index.html>
- Goodwill Industries: <http://reconnectpartnership.com/>
- Facilities: www.nj.gov/dep/dshw/lrm/uwaste/ucomplis.htm
- Best Buy: www.bestbuy.com
- Staples: www.staples.com
- EPA: www.epa.gov/epawaste/conserves/materials/erecycling.donate.htm

Hazardous Waste Clean-Up Day Saturday, November 21, 2020

EVENTS ARE HELD RAIN OR SHINE
9:00 a.m. to 1:00 p.m.

314 State Route 12, Hunterdon County Complex, Flemington, NJ 08822

NEW GUIDELINES DUE TO COVID-19 FOR THE COLLECTION OF HOUSEHOLD HAZARDOUS WASTE

1. Please limit one person per household entering the HHW program location.
2. Face Coverings are required for the driver.
3. Please place items in the rear of the vehicle.
4. There will be no pour offs of containers. The way the waste is packaged is the way the waste will be unloaded. This limits the amount of time an unloader can be subjected to the driver. If gas cans are brought in, the can will not be given back empty to the driver.

WE WILL ACCEPT WITH NO QUANTITY LIMIT:

- | | |
|----------------|----------------------|
| Used Motor Oil | Automotive Batteries |
| Anti-Freeze | Fire Extinguishers |

WE WILL ACCEPT UP TO 10 GALLONS OR 80 POUNDS OF THE FOLLOWING:

(NOTE: Amounts in excess of 10 gallons or 80 pounds will incur a cost of \$2.00 Per Pound.)

- | | |
|------------------------|---------------------------|
| Latex Paint * | Mercury/Thermostats |
| Photographic Chemicals | Aerosol Cans |
| Gasoline - Kerosene | Varnish/Stains |
| Oil Based Paint * | Fuel/Oil Sludge |
| Battery Acid | Drain Cleaner |
| Herbicides | Insecticides |
| Paint Thinner | Diesel Fuel |
| Fluorescent Tubes | Gas/Oil Mix |
| Pool Chemicals | Pesticides |
| Asbestos Pipe Wrap ** | Compact Fluorescent Lamps |

** Consolidate latex paints and oil based paints, keeping them type separated, to make full cans. Empty dry containers with lids off can be disposed of with regular garbage.*

*** Dampen and Double Wrap in Plastic*

WE WILL NOT ACCEPT ANY OF THE FOLLOWING:

- | | |
|---|------------------------|
| Solid Waste | Explosives |
| PCBs | Empty Containers * |
| Pentachlorophenol | Silvex |
| Radioactive Materials | Computers and Monitors |
| Propane or any Compressed Gas Tanks | |
| Unknown, Unmarked or Unidentified Materials | |

** Empty dry containers with lids off can be disposed of with regular garbage.*

PLEASE NOTE: Alkaline batteries now fall below Federal and State hazardous waste standards and can be disposed of in the regular trash.

Tax Collector

Message from the Tax Collector ...

Tax Bills will be mailed in two parts this year. August tax bills have already been mailed and received. The remaining three quarters will be mailed in September. At this time, we do not have any information regarding the Senior Freeze refund or Homestead Rebate credit. Please feel free to contact the State of New Jersey with any questions regarding these specific programs. Contact numbers are: New Jersey Homestead Rebate 1-888-238-1233 and New Jersey Senior Freeze 1-800-882-6597.

You can view your Tax Bill online anytime at www.lebanontownship.net. Click the NJ Property Tax Lookup link on the right side under Quick Links.

Questions ???

Please contact the Tax Office anytime with any questions. Office hours are Thursday 8:00 am - 12:00 pm and 5:15 pm - 7:15 pm. You may call at any time and leave a message. I will return your call the same day. I look forward to serving the community.

Tax Collector: Ann Marie Silvia
Phone: (908) 638-8523 x104
Email: collector@lebtwp.net

Property Tax Due Dates

- 1st Quarter February 1
- 2nd Quarter May 1
- 3rd Quarter August 1
- 4th Quarter November 1





A beautiful, upscale, fun and lively shop with amazing finds at AMAZING prices! All proceeds directly support our Giving Center & Food Pantry that services Hunterdon & Warren County families in need.

Clothes, toys, games, books, small furniture, art, decor, craft supplies, housewares, collectibles & more!

427 Route 513, Califon (Lower level behind Nicola's Pizza)

info@theoutreachconnection.org

Benefiting



New Volunteers always welcome at the shop, the Giving Center, or both!

WEDS 10-7
FRI & SAT 10-3

We know many things can be a struggle right now, but access to our support is not. We're local, we're grassroots, & we're here to help. Just call or email.

THE GIVING CENTER: 908-574-2292
SERVICES@THEOUTREACHCONNECTION.ORG
456 ROUTE 31, WASHINGTON
(DIRECTLY ACROSS FROM McDONALD'S)




Food & Hygiene Pantry
Clothing & Linen Banks
Essential Kitchenwares
Pet Food Pantry

We are powered by:

- A large team of compassionate volunteers that *truly* care
- Donations of quality goods from our local, caring community
- Donations of funds and grants from the community, from neighborhood business sponsors, & corporate partnerships

www.theoutreachconnection.org

SELLING LEBANON TOWNSHIP IS WHAT I DO!



SHARON GROBEN #1 AGENT AGAIN IN 2019*

Lebanon Township's Top Agent 8 Years in a Row

Realtor®/Sales Associate, Lebanon Township Resident

NJ Realtors® Circle of Excellence Award, Silver, 2019
 ★★ For SEVEN Years! FIVE STAR Real Estate Agent Award ★★★

Thinking of Buying or Selling? Call Sharon!

C: 908-303-9385 ~ GoGroben@earthlink.net ~ O: 908-735-8140

Visit SharonGroben.com to view all the listings on the Garden State MLS

Sharon is the Lebanon Township Expert with PROVEN RESULTS!

CURRENT MARKET UPDATES & TRENDS

- ★ Currently, the real estate market in Lebanon Township has low inventory with strong demand and historically low interest rates, so the homes that have come on the market sell quickly.
- ★ A trend in the face of the pandemic is that people will be moving from higher density living to lower density areas, for example from New York City, Bergen, Essex or Hudson Counties to Hunterdon County.
- ★ Another trend is for buyers looking for homes that provide private offices, home gyms and outdoor living and entertaining space. In-ground pools are becoming extremely popular because most people are vacationing at home.
- ★ The need for social distancing, cleanliness, and minimal contact, has increased the need for new technology tools like 3-D mapping, virtual walkthroughs and showings.

YOUR LEADING PROVIDER IN VIRTUAL SELLING & BUYING EXPERIENCES

- | | |
|---|---------------------------------------|
| • Selling & Buyer Consultations | • 3D Tours |
| • Targeted Social Media Ads & Online Strategies | • Professional Photography |
| • Virtual Showings & Open Houses | • Virtual Tours & Floor Plans |
| • Virtual Closings | • Electronic Signatures with DocuSign |

Stay Safe & Stay Healthy!

THINKING OF BUYING OR SELLING?

PUT LEBANON TOWNSHIP'S #1 AGENT* TO WORK FOR YOU!

Contact Sharon directly on her cell at 908-303-9385 for a Free, Confidential Market Analysis.



*in Lebanon Township for Dollar Volume &/or Individual Properties Sold in 2012-2019. This representation is based in whole or in part on data supplied by the Garden State Multiple Listing Service, LLC ("GSMLS"). GSMLS does not guarantee nor is in any way responsible for its accuracy. Data accurate as of 8/1/2020. Data maintained by GSMLS may not reflect all real estate activity in the market. If your home is currently listed with another broker, this is not intended as a solicitation of that listing.



**SHARON GROBEN #1 AGENT
IN LEBANON TOWNSHIP PRESENTS...**
A Lebanon Township Showcase of Homes



 <p>JUST SOLD</p>	 <p>SOLD 2020</p>	 <p>UNDER CONTRACT</p>
<p>302 Jeffrey Lane Sale Price ~ \$360,000</p>	<p>14 Woodland Heights Circle Sale Price ~ \$449,900</p>	<p>808 Highland Drive List Price ~ \$575,000</p>
 <p>UNDER CONTRACT</p>	 <p>UNDER CONTRACT</p>	 <p>ACCEPTED OFFER</p>
<p>70 Red Mill Road List Price ~ \$425,000</p>	<p>15 Hoffmans Crossing Road List Price ~ \$199,900</p>	<p>00 Red Mill Road - LAND List Price ~ \$99,900</p>

SEE WHAT MY CLIENTS ARE SAYING...

6 Lance Drive ~ Sale Price \$1,070,000



JUST SOLD

Sharon, did a great job in marketing our home. We were able to sell the home quickly even in the middle of a pandemic. She was attentive, thorough and walked us through every step in the process until close. She is a trusted advisor and someone I highly recommend to help you sell or buy a home.

Sharon is proud to have earned the Five Star Highest Rating on Zillow.
You can read all her reviews at www.Zillow.com/profile/Sharon-Groben/Reviews.
Contact Sharon directly on her cell at 908-303-9385 for a Free, Confidential Market Analysis.



*in Lebanon Township for Dollar Volume &/or Individual Properties Sold in 2012-2019. This representation is based in whole or in part on data supplied by the Garden State Multiple Listing Service, LLC ("GSMLS"). GSMLS does not guarantee nor is in any way responsible for its accuracy. Data accurate as of 8/1/2020. Data maintained by GSMLS may not reflect all real estate activity in the market. If your home is currently listed with another broker, this is not intended as a solicitation of that listing.



Education

News from the Lebanon Township PTA



The Lebanon Township PTA (LTPTA) would like to extend a warm back-to-school welcome to all of our new and returning families. The LTPTA serves both Valley View (preK-4) and Woodglen (5-8) schools. Our mission is to make every child's potential a reality by engaging and empowering families and communities to advocate for all children. By supporting the LTPTA, you are supporting your school and your children.

We know that this year is different. As our community embarks on a new chapter in public education, the LTPTA will continue to support our students and staff during this unprecedented time. We are prepared to adapt our role to meet changing needs. The LTPTA has a strong commitment to providing our students with enrichment opportunities beyond the classroom curriculum. We hope to find creative ways to continue these opportunities despite the challenges we face.

Dedicated teachers, staff, and **PARENTS** help make Lebanon Township Schools great! Join the LTPTA – it's rewarding, it's important, it's even fun! Your membership is the strength and

foundation of our PTA. When you become a member of our PTA, you are joining other parents and teachers to help our schools provide a quality education and positive learning environment for our children. By becoming a PTA member, you can connect with other parents, learn about important news and upcoming events, and have a voice in the programs we support. Dues are \$10 annually and you can register and pay online at our new MemberHub site <https://lebtwppta.new.memberhub.store/store>. A portion of your membership dues also supports the National PTA and the New Jersey State PTA, which create policies that support the educational needs of children and promotes family engagement and strong partnerships between schools and the communities they serve.

Throughout the year, we raise money through membership, fundraising and donations. To find out about upcoming events and fundraisers, like us on Facebook (www.facebook.com/LTPTA/) or visit us on the web at <http://lebtwppta.org/>.

The LTPTA holds at least three (3) General Membership meetings throughout the school year. All are welcome to attend (only members can vote). Our 2020-2021 calendar is not finalized, but we anticipate our first meeting will be held in late September. Please stay connected and look for the date to be announced.

Congratulations to our 2020-2021 LTPTA Executive Board!

President: Julie Weldon*

Vice President 1: Lauren DePalma (Valley View Volunteer Coordinator)

Vice President 2: Carrie Springer (Fundraising)

Vice President 3: Elizabeth Denis (Woodglen Volunteer Coordinator)

Treasurer: Maria Brynildsen*

Recording Secretary: Rona Levin*

Corresponding Secretary: Christine Gorton (Membership)

*Denotes final term

Got Box Tops? Scan and Clip to Support our Schools!

THANK YOU for supporting our schools 10 cents at a time! Box Tops for Education are a great way to help support the LTPTA with

products you are already buying. For more information on Box Tops, including a list of participating products, go to BTFE.com. Be sure to sign up as a member (it's free!) so you can check out our school's earnings and get access to coupons and bonus offers.

The new and improved Box Tops mobile app uses state-of-the-art technology to scan your store receipt, find participating products, and instantly add Box Tops to your school's earnings online. Download the new app today! While participating brands

(Continued on page 15)



Route 513 in Califon, NJ (908) 832-7510
www.happyfacenurseryschool.org

Preschool Programs 2½-5 years

- 2½ Years (2 days) • 3 Years (2 & 3 days) •
- 4 Years (3 & 4 days) • Fab 5's •

Extend the day with Lunch Bunch and our Enrichment Programs!

Enrichment Programs

(Students do not need to be enrolled in Preschool Programs to participate in Enrichment Programs)

All Ages: Culinary Kids, Superhero Yoga and Music & Movement

Fun for 4's & 5's: Hands-on-Science

Lunch Bunch & Stay and Play for all ages
Mommy & Me Class



Education

(Continued from page 14)

make the switch to digital Box Tops, you'll still find the traditional, pink Box Tops logo on many store products. Please continue to clip them and send them to school. Collection boxes are available for your convenience at the Municipal Building, Bunnvale Library, Valley View School, and Woodglen School.

Register your Shop Rite Price Plus card at <https://www.shopriteformyschool.com/> for even more earnings! There is no fee to join or participate. The Bonus Box Tops earned from your purchases are automatically credited to our schools. ShopRite for My School is a year-round program and your earnings never expire.

Great news! If you shop for groceries online, you can now submit your digital receipts from select retailers to earn Box Tops for your school. Forward your email receipt to receipts@boxtops4education.com using the same email that's associated with your BTFE account. If your receipt contains participating products, Box Tops will be credited within one business day.

NEW "Givebacks" Fundraising Campaign

The last several months have no doubt challenged each and every one of us financially, socially, physically, and mentally.

As Back-to-School approaches with even more obstacles coming our way, let us work together for the benefit of our beloved community. The LTPTA is currently working on establishing a new fundraising campaign called *Givebacks*. *Givebacks* will be offered through our MemberHub e-store with the goal to support local businesses as well as the students and teachers of Lebanon Township. It's a win-win!

The *Givebacks* program allows the LTPTA to sell local coupons to community members while receiving up to 20% of all sales. It will encourage our community to shop local while also supporting the LTPTA and our schools. **The LTPTA can partner with your business to provide special offers exclusively for our community - for EVERYDAY family purchases.** Offers may include pre-paid discount coupons for restaurants, stores, home services, animal care, family activities, etc. This is a great opportunity to generate business and get our community involved!

If you own a local business and are interested in partnering with the LTPTA to build our *Givebacks* campaign, please contact Carrie Springer, Second Vice President, at (201) 650-1442 or cagnj2@aol.com.

Thank you for supporting the LTPTA!

It's a great time to sell your home!

There are more buyers than there are homes for sale.

My last listing had five offers in three days!

Please contact me to discuss what I can do for you.



LEAF
REALTORS®
66 Old Turnpike Road
Oldwick, NJ 08858

annette@leafrealtors.com
www.annetteatleaf.com
Cell: (908) 892-0816
Office: (908) 975-9756

Community News

THE AMERICAN HOLLY

By Doug Diehl

Holly trees and shrubs are a symbol of the holiday season. The American holly (*ilex opaca*) keeps its leaves throughout the year. Winter berry (*ilex verticillata*) loses its leaves in the winter and is indigenous to wetlands in this area. The American holly occurs further south in the New Jersey pine barrens but can be cultivated in this region if protected from direct winter winds.

Both hollies are dioecious, meaning some trees produce female pistillate flowers while others produce male staminate flowers. The female trees of both produce red berries that last into the winter. It becomes a food source for birds like robins and cedar wax wings. The objective is to have a pollen producing holly next to a female tree. If you want a tree of the opposite sex, you will need an expert to identify the male or female flower on the plant. The flowers occur briefly in June and are small, about a half inch in diameter with a sweet odor.

The fruit becomes red in December. Usually by January, the birds, mostly robins, will show up in my backyard. Several robins will scout and sample the fruit before it is ready. Several days later, the birds will feed in many numbers in a feeding frenzy. This activity lasts several days to a week giving visual color and activity to winter.



A male holly with flowers in early June. Photo by Barbara Diehl.

North Hunterdon Food Pantry

If you need assistance in feeding your family,
the North Hunterdon Food Pantry in
Lebanon Township can help.

The pantry distributes food the second Thursday of
each month, from 9:00 AM to 12:00 PM.

We are located at:
**24 Skinner Road
Glen Gardner**

Upcoming Distribution Dates:
**SEPTEMBER 10, OCTOBER 15 and
NOVEMBER 5**

** Clients remain in their cars and volunteers
deliver food selections.

For additional information,
please call (908) 537-4824, option #2.

Leave a message or visit us the second Thursday of
each month at the pantry.

Boy Scouts of America Recruiting Day Open House for Boys and Girls Flemington Department Store

September 26, 2020

Specifically designed for youth from kindergarten to 20 years,
B.S.A. is fun, hands-on learning and achievement that puts
boys and girls in the middle of the action and
prepares them for today – and for life.

B.S.A. Programs
Cub Scouting: youth grades K-5
Scouting BSA: youth 11-17
Venturing: co-ed 14-20
Sea Scouting: co-ed 14-20
Exploring: co-ed 10-20

Join us to find a unit near you!
Scout Me In at Scouting.org



**Clinton Well & Pump
Service LLC**

*Well Pumps - Tanks
Leaks - Low Pressure*

24 HOUR EMERGENCY SERVICE

FREE ESTIMATES

162 Buffalo Hollow Road
Glen Gardner, NJ 08826

908-730-9047
fax 908-894-5012

Licensed & Insured

Township Directory

TOWNSHIP COMMITTEE		
Beverly Koehler	(908) 638-8523 x504	koehler@lebtwp.net
Marc Laul, Deputy Mayor	(908) 638-8523 x503	laul@lebtwp.net
Tom McKee	(908) 638-8523 x502	mckee@lebtwp.net
Mike Schmidt, Mayor	(908) 638-8523 x501	schmidt@lebtwp.net
Brian Wunder	(908) 832-2042	wunder@lebtwp.net

MEETINGS	
Meetings held at the Municipal Building unless otherwise specified	
Township Committee	7:00 PM 1st & 3rd Wed
Board of Health	6:30 PM 1st Wed as needed
Planning Board	7:00 PM 1st Tues
Board of Adjustment	7:30 PM 4th Wed
Environmental and Open Space Commission	7:00 PM 1st Mon
Park Committee	7:00 PM 2nd Mon
Agricultural Advisory Board	7:00 PM 2nd Mon
Recreation Commission	7:30 PM 1st Thurs
Library Committee	7:30 PM 2nd Wed at the Library
Historians	7:00 PM 2nd Thurs at the Museum

FIRE - POLICE - EMS	
Police Emergency	911
Police Dispatch	(908) 638-8515
Chief, Erik Rautenberg	(908) 638-8523 x201
Office Manager, Kathy Goracy	(908) 638-8523 x203
Emergency Medical Services	911
Fire Department Emergency	911
Chief, Robert Pek	(908) 638-4550
Fire Official, Gary Apgar	(908) 638-8523
Open Burn Fire Permit (Andover Forestry Off.)	(973) 786-6350
Office of Emergency Management	
Coordinator, Joseph Maurizio	(908) 310-8122
Tewksbury Township Municipal Court	(908) 832-7684
Hunterdon County Board of Health	(908) 788-1351

SCHOOLS		
Valley View School	Grades K – 4	(908) 832-2175
Woodglen School	Grades 5 – 8	(908) 638-4111
Voorhees High School	Grades 9 –12	(908) 638-6116

TOWNSHIP CONTACTS			
Business Administrator	James Barberio	(908) 638-8523 x112	Email: administrator@lebtwp.net
Township Clerk, Registrar of Vital Statistics, Scheduling of Municipal Building Meeting Rooms	Karen Sandorse	(908) 638-8523 x101	Email: clerk@lebtwp.net
Deputy Clerk, Dog Licensing Agent, Deputy Registrar, Reserving the Memorial Park Pavilion or Fields	Kimberly Jacobus	(908) 638-8523 x102	Email: deputyclerk@lebtwp.net
Planning Board Clerk & Board of Adjustment Secretary	Gail Glashoff	(908) 638-8523 x103	Email: Planning@lebtwp.net
Tax Collector	Ann Marie Silvia	(908) 638-8523 x104	Hours: Thursday 8:00 AM to 12 Noon and Thursday 5:15 – 7:15 PM
Assessor	Erica Brandmaier	(908) 638-8523 x105	Email: assessor@lebtwp.net Hours: Thursday evenings, 5:30 - 8:00 PM or by appointment
Recycling Coordinator	Joann Fascenelli	(908) 638-8523 x106	
Zoning Officer	John Flemming	(908) 638-8523 x107	Hours: Wednesday 8:00 AM - 12:00 PM and Thursday 4:00 - 8:00 PM
Department of Public Works	Warren Gabriel	(908) 638-8523 x301	Email: dpw@lebtwp.net
Animal Control	Police	(908) 638-8515	
Bunnvale Library		(908) 638-8523 x401	Hours: Wed 1:00 - 8:00 PM, Thurs & Fri 9:00 AM - 5:00 PM, Sat 9:00 AM - 2:00 PM
Township of Lebanon Museum		(908) 638-8523 x405	Hours: Tues 9:00 AM - 3:30 PM, Thurs 1:00 - 8:00 PM, Sat 11:00 AM - 4:30 PM
Recreation Commission	Maria Naccarato		Email: recreation@lebtwp.net
EOS Commission / Green Team	Adam Duckworth		Email: ltenv@lebtwp.net / LTGreenTeam@gmail.com
Webmaster & Newsletter	Karen Newman		Email: kjnewman115@gmail.com
Construction Office, Christy Hoffman Farm, 108 Rt 512, Califon, NJ 07830		(908) 832-5552	Hours: Mon - Fri 8:30 AM - 4:00 PM

TOWNSHIP OF LEBANON

Lebanon Township Municipal Building
 530 West Hill Road
 Glen Gardner, NJ 08826

PRSRT STD
 U.S. POSTAGE
 PAID
 Flemington, NJ
 PERMIT NO. 405

Phone: 908-638-8523
 Fax: 908-638-5957
 Email: clerk@lebtwp.net

We're on the Web!
www.lebanontownship.net

<i>Calendar</i>		
<u>September</u>	<u>October</u>	<u>November</u>
5 - Town-wide Shredding Event		1 - Deadline for Winter Newsletter
26 - County Electronic Waste Recycling		14 - Computer/Electronics and Scrap Metal Recycling
		21 - County Hazardous Waste Clean Up Day

<i>Newsletter Notes</i>		
Publishing Schedule		Advertising Costs
Winter	Dec, Jan, Feb	Deadline for input Nov 1
Spring	Mar, Apr, May	Deadline for input Feb 1
Summer	Jun, Jul, Aug	Deadline for input May 1
Fall	Sep, Oct, Nov	Deadline for input Aug 1
		Business Card: \$25.00
		Quarter Page: \$40.00
		Half Page: \$80.00
		Full Page: \$150.00
All advertisements should include a check made payable to Lebanon Township.		
Please email items to Karen Newman at kjnewman115@gmail.com (include NEWSLETTER in the subject line) or mail to: Lebanon Township Municipal Building, 530 West Hill Road, Glen Gardner, NJ 08826, Attn: Newsletter.		
Some images in this publication courtesy of iband.com.		