



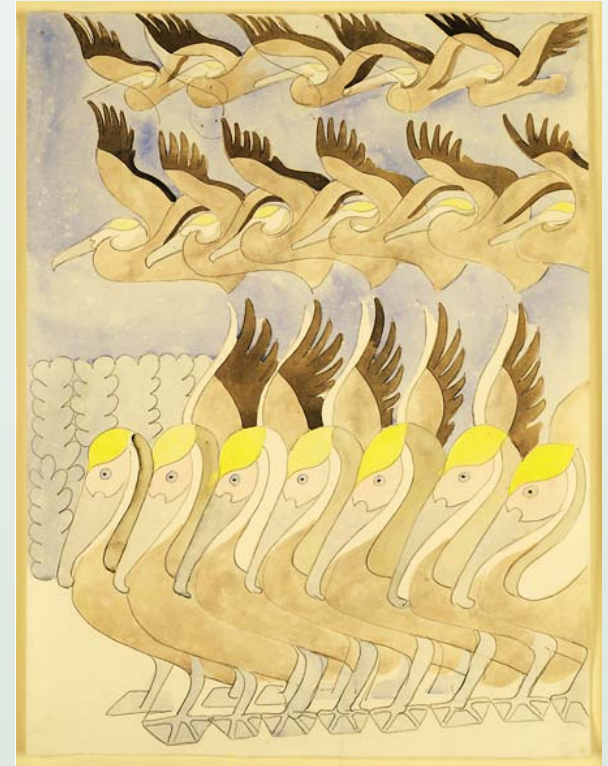
LOUISIANA  
ENDOWMENT  
FOR THE  
HUMANITIES



2003  
ANNUAL  
REPORT



PAGE 1	Board and Staff
PAGE 2	Introduction
PAGE 4	PRIME TIME <i>Family Reading Time</i>
PAGE 5	Louisiana Cultural Vistas <i>Magazine</i>
PAGE 6	Readings in Literature and Culture (RELIC)
PAGE 7	Teacher Institutes for Advanced Study
PAGE 9	Grants
	■ <i>Grants Analysis</i> (p. 9-10)
	■ <i>American Routes</i> (p. 11)
	■ <i>Tennessee Williams</i> (p. 11)
	■ <i>Yesterday's Tomorrows</i> (p. 12)
	■ <i>Southern Humanities Media Fund</i> (p. 12)
	■ <i>Public Humanities Grants</i> (p.13)
	■ <i>Documentary Film &amp; Radio Grants</i> (p. 15)
	■ <i>Louisiana Publishing Initiative</i> (p. 16)
	■ <i>Outreach Grants</i> (p. 17)
PAGE 22	2003 Humanities Awards
PAGE 23	Past Board of Directors
PAGE 24	2003 Donors to the LEH



## On the cover

*Though renowned as a painter of the Mississippi Gulf Coast, artist Walter Anderson was born and schooled in New Orleans. His watercolor Pelicans is in the collection of the Ogden Museum of Southern Art.*

# BOARD of DIRECTORS



PHILIP C. EARHART  
*LEH Chairman, Lake Charles*

ALICE G. PECORARO, Ph.D.  
*Vice Chair, Morgan City*

CYNTHIA LOWENTHAL  
*Secretary, New Orleans*

MARK H. HELLER, CLU, CPC  
*Treasurer, New Orleans*

RALPH BRENNAN  
*New Orleans*

THOMAS C. DAVID, JR.  
*Alexandria*

DAVID M. EPPLER  
*Pineville*

NEIL T. ERWIN  
*Shreveport*

ROSEMARY UPSHAW EWING  
*Quitman*

GARY B. FROEBA  
*New Orleans*

NANCY GUIDRY  
*Metairie*

SANDRA M. GUNNER  
*New Orleans*

WILLIAM JENKINS  
*Baton Rouge*

R. LEWIS MCHENRY  
*New Orleans*

F. CHARLES McMAINS, JR.  
*Baton Rouge*

MELINDA MINTZ  
*Monroe*

LAWRENCE N. POWELL  
*New Orleans*

HELAINÉ RAZOVSKY  
*Natchitoches*

MARGARET M. RITCHEY  
*Lafayette*

RENEE VANOVER  
*Berwick*

NEARI FRANCOIS WARNER  
*Grambling*

MARY LEACH WERNER  
*Lake Charles*

LIZ B. WHITE  
*Ruston*

FRANK WILLIAMS, JR.  
*Shreveport*

JANET R. WOOD  
*Lafayette*

MICHAEL SARTISKY,  
PH.D.  
*President/  
Executive  
Director  
& Editor-in-Chief  
of Louisiana Cultural Vistas*



JOHN R. KEMP  
*Deputy Director  
for Grants & Public Affairs*

WARREN MEYER  
*Associate Director  
of Administration*

MIKE BOYLE  
*Director of Development*

JENNIFER MITCHEL  
*Associate Director*

WALKER LASITER  
*Assistant Director*

LOU ANN MOREHOUSE  
*Assistant Director*

JIM SEGRETO  
*Project Director, RELIC  
(Readings in Literature  
& Culture)*

DIANNE BRADY  
*Project Director  
PRIME TIME  
FAMILY READING TIME®*

DANA ENESS, FAYE FLANANGAN  
& ONEAL ISAAC  
*Assistant Directors  
PRIME TIME  
FAMILY READING TIME®*

DAVID JOHNSON  
*Publications Director  
Managing Editor/Art Dir.  
Louisiana Cultural Vistas*

DAVID SMITH  
*Assistant Editor*

SANDRA WILLIS  
*Office Manager*

STEPHANIE MACKIN  
*Executive Manager*

ANITA YESHO  
*Administrative Assistant*

KATE MONTGOMERY  
*Administrative Assistant*

# CONSULTANTS

LINDA SPRADLEY  
*Legislative Liaison*

R. CHRISTIAN JOHNSON  
*Legislative Liaison  
Washington, D.C.*

LINDA LANGLEY  
*Program Education*

KEITH DUBLIN  
*Network Administrator*

LAURA LADENDORF,  
KARIN MARTIN, TOAN NGUYEN,  
& BECCA RAPP  
*Designers,  
Louisiana Cultural Vistas*

# ADMINISTRATIVE STAFF

## LOUISIANA HUMANITIES CENTER

Turners' Hall, a 19th-century German social hall, has served as home to the LEH since the spring of 2001. It is located in New Orleans' Central Business District.



# LOUISIANA ENDOWMENT *for the* HUMANITIES |

INTRODUCTION

THE LOUISIANA ENDOWMENT FOR THE HUMANITIES — through its national award-winning programs, *Louisiana Cultural Vistas* magazine and grants awarded to communities across the state — seeks to help Louisianians tell their stories and create greater public access to “our shared heritage.” Its programs also address needs such as family literacy, teacher professional development and cultural tourism that are crucial to the quality of life today and for future generations.

Last year, 2003, was a phenomenal year in funding and in programs. The Board of Directors awarded 11 grants to various organizations throughout the state to underwrite programs that celebrated the Bicentennial of the Louisiana Purchase. That was in addition to the 11 grants awarded in 2002. In October 2003, the U.S. Department of Education awarded an almost \$1 million “Teaching American History” grant to the LEH and the Orleans Parish School System to conduct a three-year series of summer institutes for almost 400 Orleans Parish public school history teachers. In addition, the LEH was fortunate to be included in the state’s capital outlay appropriation for \$600,000 for the Louisiana Humanities Center. The appropriation is pending in the state’s 2004-2005 capital outlay budget. The LEH, working with national fund-raising consultants, also completed a feasibility study for a \$2.5 million capital campaign that will be launched in mid 2004.

Whether through the dramatic expansion of PRIME TIME FAMILY READING TIME, the receipt of a major Teaching of American History grant, our Teacher Institutes for Advanced Study or *Louisiana Cultural Vistas* magazine, the Louisiana Endowment for the Humanities’ statewide program reached deep into communities

throughout the state with grants for museum exhibitions and other humanities projects, and a broadened adult reading program in Readings in Literature and Culture (RELIC). We continued to excel in developing and supporting programs that are now national models.

Louisiana rarely has been the source of a solution to the problems of illiteracy. Too often, our state has been cited among its dismal examples. Yet, in 2003, our PRIME TIME completed programs in 61 sites, representing 33 parishes and reaching 2,900 young people and their parents or guardians. In addition, PRIME TIME programs were held at 17 sites in seven other states. Illinois, Indiana, Michigan, New York and Wisconsin contracted as affiliate states, thus illustrating their commitment

to sustain and expand the program nationally. Also, the National Endowment for the Humanities awarded PRIME TIME a \$290,000 grant, our largest ever, to expand the program to 20 sites in four other states. The program also received the Public Library Association’s 2003 national Advancement of Literacy Award. Since PRIME TIME began in 1991, it has reached 59 of the state’s 64 parishes as well as communities in 34 other states, plus the Virgin Islands. This is truly a Louisiana success story.



**The LEH and Orleans Parish public schools teamed up to earn a \$1 million “Teaching American History” grant.**



“Whether through the dramatic expansion of PRIME TIME FAMILY READING TIME, the receipt of a \$1 million Teaching American History grant, our Teacher Institutes for Advanced Study or Louisiana Cultural Vistas magazine, the LEH continued to excel in developing and supporting programs that are now national models.”

— MICHAEL SARTISKY, LEH EXECUTIVE DIRECTOR AND PRESIDENT

Now in its 21st year, RELIC is a cornerstone of our initiatives and a blueprint for successful reading programs. In 2003, LEH, working with local libraries, conducted 40 six-week programs with almost 5,513 Louisiana residents signing up. Subjects this year ranged from Louisiana and Southern literature to the legacy of the Louisiana Purchase. Since its inception in 1983, RELIC programs have reached

over 70,000 Louisiana residents in 62 of the state’s 64 parishes.

Our highly popular Teacher Institutes for Advance Studies were successful again last year. In 2003, the LEH provided grant funds for 10 institutes, engaging 217 teachers from 37 parishes and scholars from a dozen Louisiana colleges and universities. The largest statewide program of its kind in the nation, teachers who have completed our Teacher

Institutes for Advanced Study instruct just over 452,000 Louisiana students annually.

*Louisiana Cultural Vistas*, many times winner of the New Orleans Press Club award for best publication, continued to gain greater attention and acclaim. With a readership exceeding 50,000, *Louisiana Cultural Vistas* is a lasting way for the LEH to promote and explore Louisiana’s rich cultural heritage.

Two other major LEH-supported projects also are featured in this



report. American Routes is a nationally acclaimed two-hour weekly radio program, featuring Louisiana roots music. In 2003, it reached 147 radio stations in 200 radio markets. The Tennessee Williams New Orleans Literary Festival, completing its 17th year in 2003, continued to gain national recognition as one of the nation’s premier literary events.

The LEH also continued to support the efforts of the Southern Humanities Media Fund, which underwrites film, video and audio productions that focus on the history and culture of the American South. The LEH has contributed \$45,000 since joining the SHMF in 2002.

While practically every area of LEH programming grew during the past year, much more remains to be done. Several regions of the state are underserved. Unfortunately, many communities lack the resources to host programs we support.

These are challenges we continue to explore.

This year’s Annual Report also describes grants projects funded in 2003 to community organizations, institutions, museums, scholars, writers and film producers. Since its creation in 1971, the LEH has provided almost \$15 million to help fund almost 2,400 humanities projects, reaching towns and cities in every parish in the state. In 2003 alone, the LEH awarded 82 grants to individuals and organizations, totaling almost \$715,000.

As you will see in the pages that follow, 2003 was an exceptional year, thanks to continuing support from the State of Louisiana, the National Endowment for the Humanities, corporations and hundreds of private donors. It was a year in which the Louisiana Endowment for the Humanities’ Board of Directors and staff made important strides in creating even greater public access to the humanities.

PHILIP C. EARHART, 2003 LEH Chair

MICHAEL SARTISKY, PH.D., President/Executive Director



A partnership with the Smithsonian Institution allowed the Yesterday’s Tomorrows exhibit to travel statewide.

# PRIME TIME FAMILY READING TIME |

PRIME TIME

PRIME TIME FAMILY READING TIME, a unique intergenerational six- or eight-week literacy program composed of readings, discussions and storytelling, reached more than 2,800 participants at public libraries, schools, community centers and other public venues in 2003. The exemplary family-based model featured award-winning children's books to stimulate discussion about themes and problems encountered in daily life.

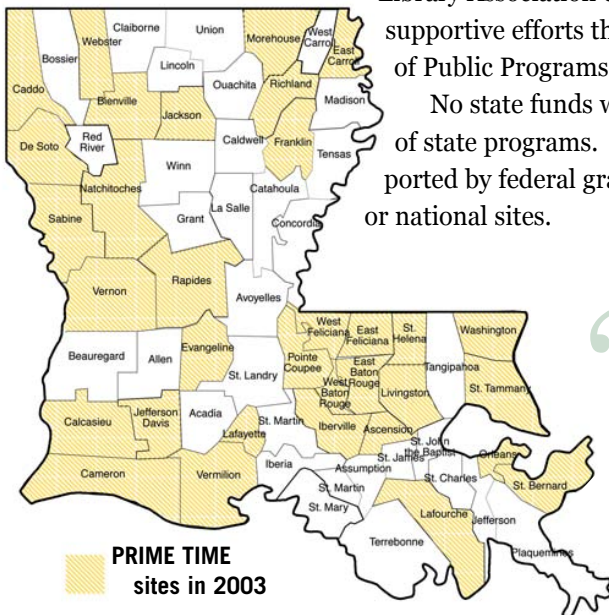
The goals of this humanities project were to encourage parents and children to bond around the act of reading and learning together, thus reinforcing the role of the family, and to help children and parents learn how to select and share books, thereby inspiring a lifelong love of books and libraries.

In 2003 PRIME TIME completed 61 sites in Louisiana, representing 33 parishes. Since the program began in 1991, 59 of Louisiana's 64 parishes have participated. This program is designed for families with low literacy skills and targets parents with children ages 6 to 10. The format, however, includes a separate pre-literacy group activity for younger siblings.

In recognition of the proven potential for replication, the American

Library Association continued their supportive efforts through the office of Public Programs.

No state funds were used for these out-of-state programs. These programs were supported by federal grants that required regional or national sites.



*"The families just could not believe that these services (public library) were all free of charge. It was a humbling experience for me. I assumed people knew. I'm grateful to have given so many access to the valuable tool of our local library."*

SCHOOL LIBRARY SITE COORDINATOR



The LEH's rapidly growing PRIME TIME program encourages reading and brings families together.

## PRIME TIME *in 2003*

- Received the Public Library Association's 2003 national Advancement of Literacy Award.
- Received a \$290,000 grant from the National Endowment for the Humanities to implement five Prime Time sites in each of the following states: California, Florida, Pennsylvania and Kentucky.
  - Completed 61 sites in Louisiana, representing 33 parishes. Three of these parishes implemented the model for the first time.
  - Reached a statewide audience of about 2,800 with an average of 46 participants for each weekly session.
  - Continued expansion as a national model for family reading programs. As a result of NEH funding, Library Services and Technology Act grants and affiliate funds, 17 sites were implemented in seven states.
  - States to contract with LEH as affiliate states, illustrating their commitment to sustain and expand the program, were Wisconsin, New York, Michigan, Illinois and Indiana.

LOUISIANA CULTURAL VISTAS completed its 14th year of publication, focusing on the state's culture, arts and history. This innovative publishing project has brought to the printed page the best in both visuals and text from Louisiana scholars, artists, photographers, fiction writers, poets, essayists, and reviewers. The quarterly magazine ensures that grant projects may have reached select regional populations gain greater visibility on magazine racks and coffee tables in the living rooms, waiting rooms, and offices of more than 80,000 readers. Among the highlights of the past year are:

- The story of Ferriday and the large role the small town has played in America's musical landscape.

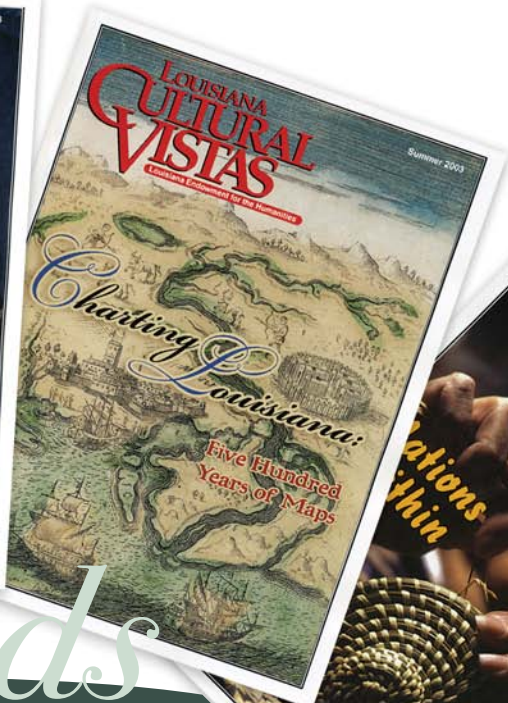
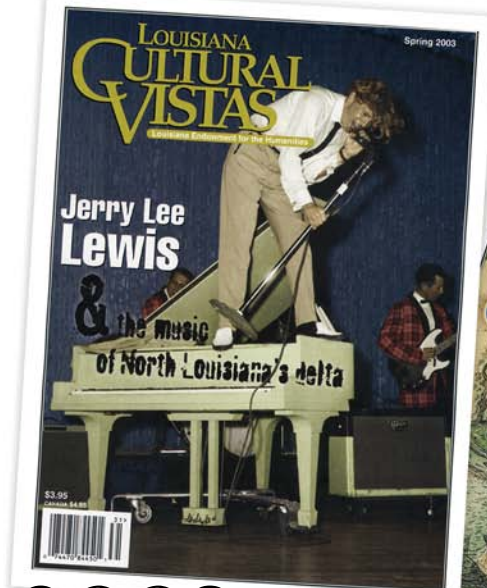
- A review of the re-emergence of ethnic pride in Acadiana, which had often been quelled by an unjustified inferiority complex;

- The story of Louisiana's four sovereign Native American tribes, as they try to preserve their traditional ways at the same time as new economic enterprises increase and their profile grows;

- A two-part series on the history of cartography featuring maps from The Historic New Orleans Collection dating explorers' early forays to the Louisiana Territory to the present;

- A look at the rituals and feasts surrounding St. Joseph's Day, traditionally observed in New Orleans by descendants of Sicilian immigrants;

- An excerpt from Louisiana author Tim Gautreaux's new novel, *The Clearing*, about a Pennsylvania man who ventures to a backwater logging camp in hopes of saving both his family's cypress sawmill and a wayward brother.



## 2003 awards

Since 1994 Louisiana Cultural Vistas has won 43 awards for publishing excellence from the Press Club of New Orleans, including four for Best Publication. In 2003 the Press Club of New Orleans recognized the magazine with seven awards.

**1st Place >** Best Public Relations Publication, Vols. 13-1 through 13-4.

**President's Award >** Best photography, all categories.

**1st Place >** Photo story, Louisiana Music Makers, by Dick Waterman, Spring 2002.

**2nd Place >** Layout & Design, Historic Buildings of the French Quarter, by David Johnson, Summer 2002.

**3rd Place >** Layout & Design, Natchitoches & Louisiana's Cane River, by Laura Ladendorf, Summer 2002.

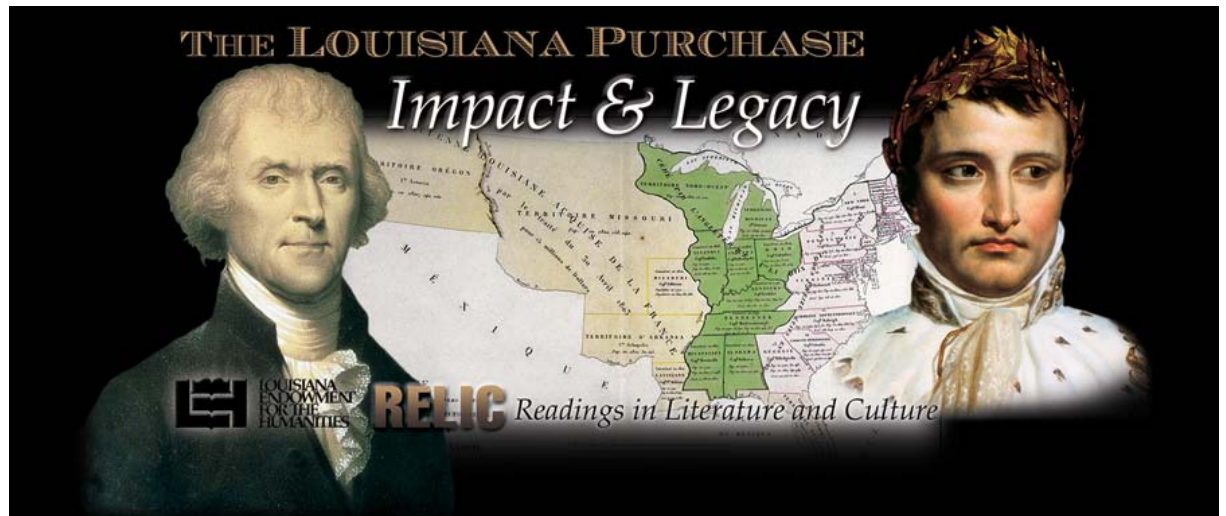
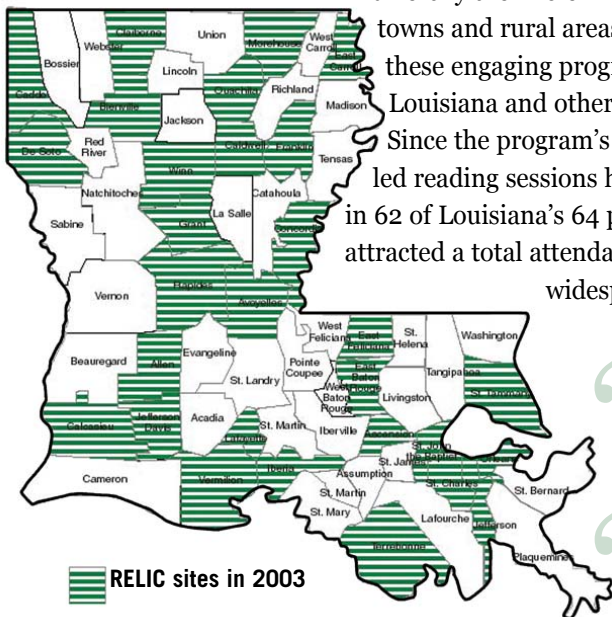
The Louisiana Endowment for the Humanities' quarterly magazine has examined the state's heritage, culture, history and arts for 14 years.

# READINGS *in* LITERATURE *and* CULTURE |

READINGS IN LITERATURE AND CULTURE (RELIC) has offered adult readers across Louisiana an opportunity to engage in book discussions and readings in the humanities that are diverse and intellectually challenging. Established in 1983, RELIC is LEH's longest running program.

New topics that speak to the experiences of Louisianians are being created to meet the recent demands for new directions in humanities programming. With that in mind, the LEH launched *The Louisiana Purchase: Impact and Legacy* in the fall. It has received strong public interest.

RELIC, administered in partnership with the Louisiana Library Association, serves as a gateway for individuals to engage the worlds of ideas and expression about the human experience, and as a vehicle for libraries to diversify their role in their communities. Small towns and rural areas particularly benefit from these engaging programs, as do newcomers to Louisiana and others with specific interests. Since the program's inception, these scholar-led reading sessions have been held in libraries in 62 of Louisiana's 64 parishes. RELIC has attracted a total attendance of nearly 69,000 — from all accounts the most widespread and well-attended series of reading projects in the South.



## RELIC *in* 2003

- Engaged 34 humanities scholars from 15 institutions and three from the public sector.
- Delivered 10 subjects, ranging from Louisiana literature to Southern literature, from the Louisiana Purchase to the history of World War II.
  - Drew into discussions 5,513 participants in 40 programs for an evening session average of 23.
  - Delivered programs in 34 locations in 28 parishes throughout the state, with 20 of them in communities ranging from rural to small town in population size.

*“Through these discussions I’ve gotten new insights into various cultures. As a result, my attitudes in some areas have changed.”*

LAFAYETTE, ENCOUNTER IN LOUISIANA

*“Enjoy hearing other people’s opinions about reading material.”*

WINNFIELD, LOUISIANA CHARACTERS: BIOGRAPHIES OF THE BAYOU STATE

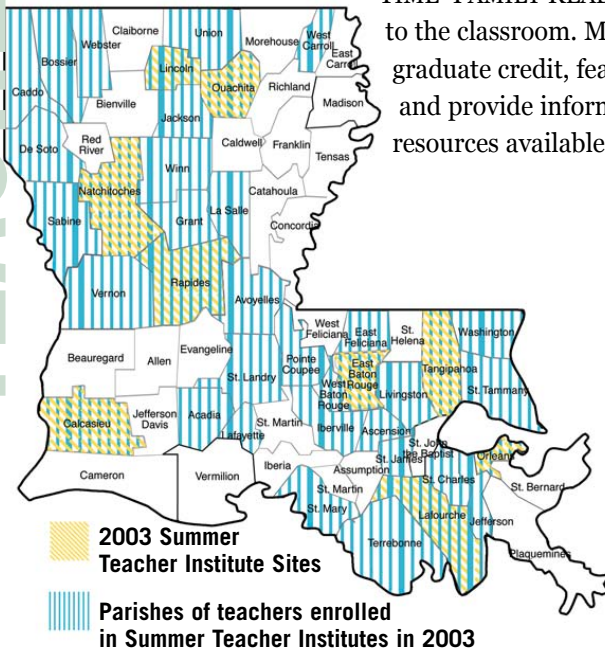


# LEH TEACHER INSTITUTES *for* ADVANCED STUDY |

SINCE 1985, THE LEH HAS SPONSORED an intensive series of 159 summer seminars for more than 3,000 Louisiana middle and high school teachers, who in turn teach approximately 452,550 students annually. The purpose of this program is to provide teachers with intellectual stimulation and advanced knowledge of the subjects they teach. Originally supported entirely by the LEH with funds from the National Endowment for the Humanities, the series has expanded with support from the State of Louisiana and foundation gifts.

At its December 2003 meeting, the LEH board approved 10 Teacher Institutes that will take place during the summer of 2004. They will focus on local topics such as Cajuns and Creoles as well as those of national import, including both the Vietnam and Cold Wars, as well as the Roaring '20s. Two institutes are also serving as pilot programs: 1) Reaching out to teachers and students in one of the most underserved regions of Louisiana, the institute sponsored by Centenary College, will take place in Winnsboro; and 2) LSU-Shreveport will introduce LEH's national award-winning PRIME

TIME FAMILY READING TIME program to the classroom. Most seminars offer graduate credit, feature guest lecturers and provide information on Internet resources available for classroom use.



## FORTHCOMING 2004 TEACHER INSTITUTES *for* ADVANCED STUDY:

### ■ PERSPECTIVES

#### ON THE VIETNAM WAR:

#### HISTORY, CULTURE, AND POLITICS

03-772-190 / \$29,540

Louisiana State University at Eunice  
Eunice

Dr. Huey Guagliardo

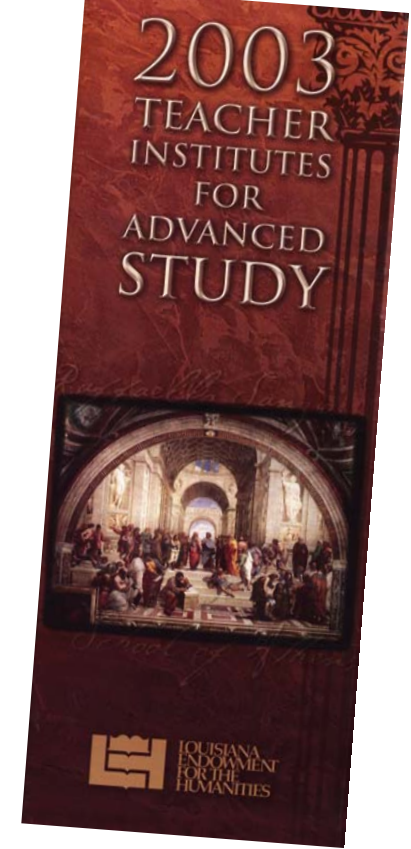
This institute will introduce school teachers to the history and politics of the conflict, as well as the rich variety of literature and music written during and after the war.

### ■ THE ROARING TWENTIES, IN BLACK AND WHITE

03-772-191 / \$35,808

Louisiana State University  
and A&M College  
Baton Rouge

Dr. John W. Lowe



Teachers will study two great genres of post-World War I American literature: "The Lost Generation" and the "Harlem Renaissance."

*(List continued, next page)*

# Teacher Institutes *in* 2003

- Held 10 intensive seminars led by university professors on topics ranging from Louisiana history and literature to Middle Eastern history and culture.
- Enriched 217 teachers from 37 parishes across the state.
- Served more than 32,000 students in Louisiana schools during the 2003-04 school year.

# LEH TEACHER INSTITUTES *for* ADVANCED STUDY |

## ■ WHO AM I?

### EXPLORING IDENTITY IN K-8 LITERATURE

03-772-193 / \$26,761

Louisiana State University in Shreveport  
Shreveport

Dr. Helen Clare Taylor

Teachers participating in this institute will be able to work with students to enhance their critical thinking skills, especially in framing issues of identity.

## ■ SHAKESPEARE'S CIVIL COMEDY

03-772-195 / \$33,350

Centenary College of Louisiana  
Winnsboro

Dr. Steve Shelburne

Institute will encourage more extensive use of Shakespearean comedy as a basis for teaching the role of art in society and individuals' civic responsibilities.

## ■ HOLLYWOOD AND THE COLD WAR

03-772-196 / \$28,773

Louisiana Tech University  
Ruston

Dr. Brian C. Etheridge

Institute will provide teachers with tools for engaging students through film, challenging them to explore the ways in which film functions in society.

## ■ AMERICAN DREAM, AMERICAN DRAMA, AMERICAN CLASSROOM

03-772-197 / \$28,767

University of Louisiana at Monroe  
Monroe

Dr. Janet V. Haedicke

Institute will explore plays written in

the U.S. that reflect upon the "American Dream" and how it was interpreted by playwrights in different periods of the 20th century.

## ■ ALL WORK AND NO PLAY, YEAH? THE USE OF NARRATIVE TO EXPLORE THE WORLD OF WORK IN SOUTHWEST LOUISIANA

03-772-199 / \$24,943

McNeese State University  
Lake Charles

Dr. Delma McLeod-Porter

Institute will study narrative structure through oral histories gathered from individuals living and working in southwest Louisiana as a tool for improving students' analytical and writing skills.

## ■ ACCULTURATING ACADIANA: RE-READING THE NARRATIVE OF LOCAL PLACES

03-772-200 / \$27,461

University of Louisiana at Lafayette  
Lafayette

Dr. Julia Frederick

Teachers will rediscover the historic peoples of the Acadiana Region, as well as the acculturation of traditional peoples and their ability to retain tradition within modernization.

## ■ CREOLES IN FACT AND FICTION

03-772-202 / \$32,094

Southeastern Louisiana University  
Hammond

Dr. Thomas H. Fick

Institute will explore the portrayal of Creoles in history, literature and film, with attention to historical backgrounds.



Photography of urban life was the focus of one institute. In this dramatic photograph, Margaret Bourke-White works high atop the Chrysler Building in New York in 1934.

## ■ URBAN EXPLORERS: PHOTOGRAPHERS IN THE AMERICAN CITY

03-772-203 / \$30,000

Loyola University New Orleans  
New Orleans

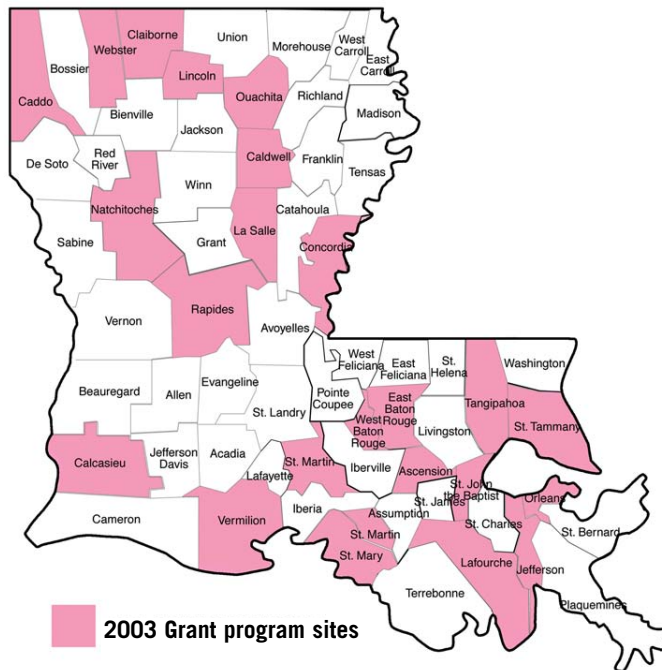
Dr. Leslie Parr

Institute will expose teachers to the

American city through the lens of its photographers, whose pictures present interpretations of urban life, and the political, social and aesthetic movements that have helped shape our understanding of the city and its inhabitants.

# GRANTS ANALYSIS SUMMARY |

THE LOUISIANA ENDOWMENT FOR THE HUMANITIES awarded 84 grants totaling \$736,077 in 2003. These grants ranged from an outreach grant of \$850 to a Teacher Institute for Advanced Study grant of \$35,808. The average grant was \$8,713. These grants included funding for 31 discussion projects averaging \$3,940; seven documentary films averaging \$17,534; 14 exhibitions averaging \$5,004; seven literary or film festival projects averaging \$13,075; nine planning grants for \$1,000 each; five publication projects averaging \$4,300; and 10 Teacher Institutes averaging \$29,750.



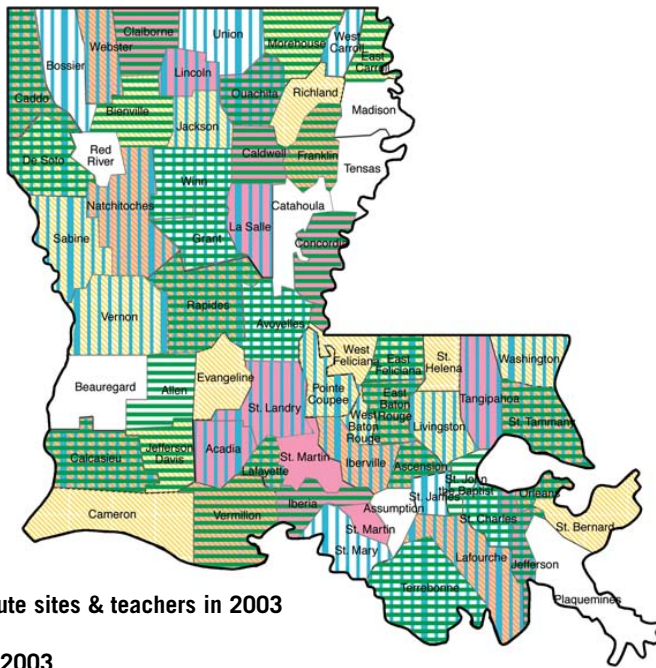
## 2003 GRANT PROFILES




Areas of Concentration	Grants	Total Awards	% of Funds	% of Grants
General Humanities	42	\$401,364	55%	50%
Louisiana Humanities	42	\$334,713	47%	50%

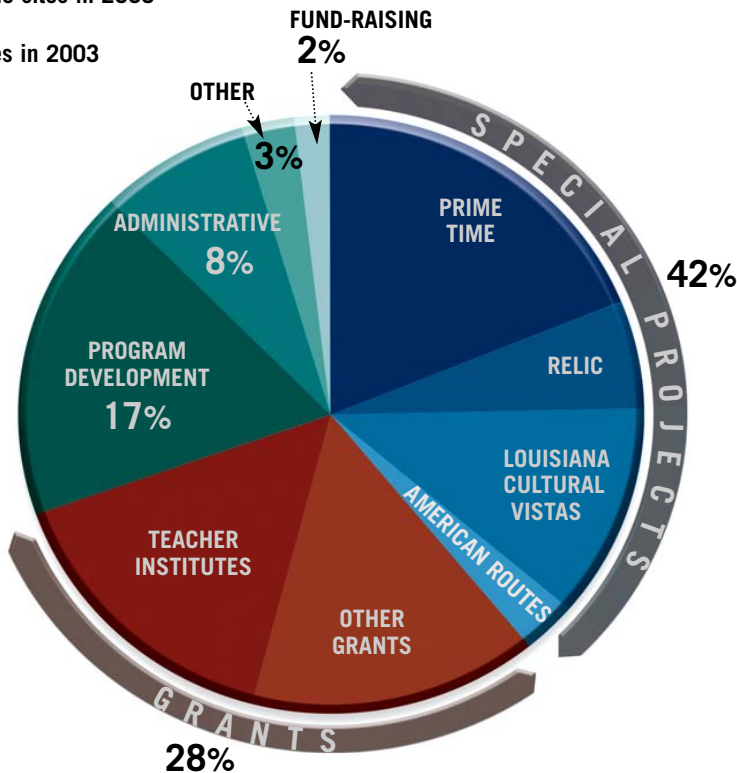
Location of Awards (by Congressional District)				
Vitter (1st)	7	\$103,965	14%	8%
Jefferson (2nd)	22	\$132,127	18%	27%
Tauzin (3rd)	6	\$15,481	2%	7%
McCreery (4th)	10	\$78,961	11%	11%
Alexander (5th)	14	\$135,481	18%	17%
Baker (6th)	9	\$100,802	14%	11%
John (7th)	11	\$122,887	17%	13%
Out of State	5	\$46,373	6%	6%
<b>Totals</b>	<b>84</b>	<b>\$736,077</b>	<b>100%</b>	<b>100%</b>

Format				
Conference/Discussion/Lecture	32	\$123,755	17%	38%
Documentary Film & Radio	7	\$122,737	17%	8%
Exhibition	14	\$70,061	10%	17%
Festival (Literary, Film, Folklife)	7	\$91,527	12%	8%
Planning	9	\$9,000	1%	11%
Publication	5	\$21,500	3%	6%
Teacher Institute/Workshop	10	\$297,497	40%	12%
<b>Totals</b>	<b>84</b>	<b>\$736,077</b>	<b>100%</b>	<b>100%</b>

Size of Grants				
To \$2,000	31	\$45,100	6%	37%
\$2,001-\$2,500	14	\$34,336	5%	17%
\$2,501-\$7,500	9	\$41,856	6%	11%
\$7,501-\$10,000	3	\$24,605	3%	4%
\$10,001-\$15,000	7	\$92,936	12%	9%
\$15,001-\$20,000	6	\$104,191	14%	6%
\$20,001-\$25,000	4	\$94,999	13%	5%
\$25,001-\$30,000	7	\$196,802	27%	9%
More than \$30,000	3	\$101,252	14%	4%
<b>Totals</b>	<b>84</b>	<b>\$736,077</b>	<b>100%</b>	<b>100%</b>



-  Teacher Institute sites & teachers in 2003
-  Grant sites in 2003
-  Prime Time sites in 2003
-  RELIC sites in 2003



## A N A L Y S I S of Grants Awarded

	Outreach Grants	Public Humanities Grants	Total
Applications Received	75	84	159
Applications Funded	45	39	84
% of Applications Funded	60%	46%	53%
LEH Awards	\$ 79,436	\$ 656,641	\$ 736,077
Project Cost Sharing	\$ 229,589	\$ 2,464,890	\$ 2,694,479
<b>Total LEH Awards &amp; Project Cost Sharing</b>	<b>\$ 309,025</b>	<b>\$ 3,101,531</b>	<b>\$ 3,430,556</b>

## R E L I C Readings in Literature & Culture

2003 Library Reading Discussion Project  
A Cooperative Project of the LEH and the Louisiana Library Association

	North	Central	Southeast	Southwest	TOTAL
Library Sites	12	8	14	6	40
Outright Funds	\$ 45,932	\$ 28,931	\$ 55,117	\$ 23,050	\$ 153,030
% of Total Funds	30%	19%	36%	15%	100%
Library Cost Share	\$ 34,440	\$ 22,960	\$ 40,180	\$ 17,220	\$ 114,800
<b>Total RELIC Funding</b>	<b>\$ 80,372</b>	<b>\$ 51,891</b>	<b>\$ 95,297</b>	<b>\$ 40,270</b>	<b>\$ 267,830</b>

## P R I M E T I M E FAMILY READING TIME

2003 Library Reading and Discussion Project for Families

	North	Central	Southeast	Southwest	National	Total
Library Sites	13	16	21	11	7	
Outright Funds	\$95,604	\$117,666	\$154,437	\$80,895	\$51,479	\$500,081
% of Total Funds	21%	26%	35%	18%		100%
Library Cost Share	\$30,875	\$38,000	\$49,875	\$26,125	\$16,625	\$161,500
<b>Total PT Funding</b>	<b>\$126,479</b>	<b>\$155,666</b>	<b>\$204,312</b>	<b>\$107,020</b>	<b>\$68,104</b>	<b>\$661,581</b>

# SPECIAL GRANTS |

GRANTS

## *American Routes*

“American Routes” is a one-hour radio program featuring Louisiana and nationally known musicians. These artists represent a wide range of popular music: jazz, blues, Cajun, Latin, soul, Zydeco, western swing, pop and gospel. The program format includes interviews with the hottest artists on the contemporary and traditional music scene as well as samples of their latest works.

The nationally syndicated program celebrated its fifth anniversary in 2003. Reaching 147 stations in 200 radio markets, and an estimated weekly national audience of 500,000 listeners, these stations ranged from those dominated by classical formats to those featuring news.

**American Routes**  
**Nicholas Spitzer**  
**\$97,000**



Louisiana music is front and center on American Routes.

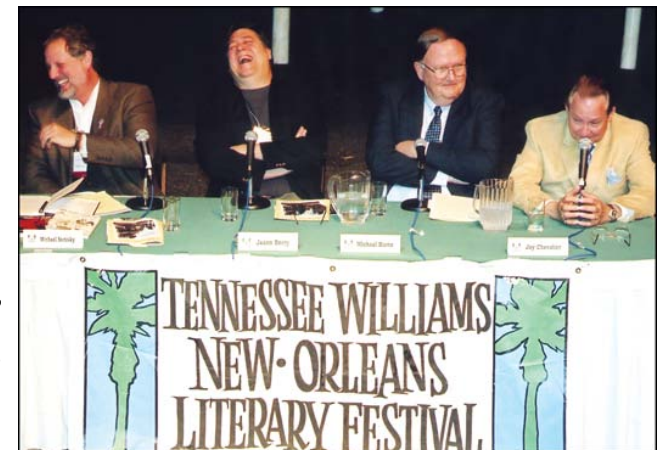
## *Tennessee Williams Festival*

**Tennessee Williams Festival**  
**The Tennessee Williams New Orleans Literary Festival**  
**03-772-189 / \$25,000**  
**Shannon Stover**

THIS ANNUAL LITERARY FESTIVAL brings top writers to New Orleans and provides quality programming for the general public. In its 17th year (2003), this remarkable festival contributed to the state’s cultural life with five days of master classes, poetry readings, literary panels, cultural walking tours, theatrical and musical performances and a book fair. It is the largest and oldest

established literary festival in the city and reaches the largest audience of any local literary event. Many local residents also enjoyed panel discussions broadcasted on area cable television channels. Besides reaching thousands of people, the festival is one of the nation’s Top 10 Literary Events. The festival also sends writers to the city’s public high schools and contributes books to their libraries.

This year’s festival participants included Louisiana authors Tim Gautreaux and Robert Morgan, biographer Douglas Brinkley, The Food Channel’s Sarah Moulton, Bob Shieffer from CBS’ Face the Nation, and critically acclaimed actress Tammy Grimes. A special discussion on the work of Zora Neale Hurston, with Valarie Boyd and Carla Kaplan, was the focus of this year’s “Writers’ Profile” panel.



The Tennessee Williams New Orleans Literary Festival never fails to present lively and insightful panel discussions.

# LEH SPECIAL GRANTS

GRANTS

For the second time, the LEH partnered with the Smithsonian Institution's Museum on Main Street Program to bring one of its renowned traveling exhibits to Louisiana's rural communities.

Touring from March 2004 through May 2005, "Yesterday's Tomorrows" explores the history of the future — our expectations and beliefs about things to come. From ray guns to robots, to nuclear powered cars, to the Atom-Bomb house, to predictions and inventions that went awry, "Yesterday's Tomorrows" helps us understand the values and hopes Americans hold and have held about the years to come. Besides covering all exhibition costs (\$9,000) and providing thus far \$16,000 in grants for ancillary exhibits and public programs to the six host sites, LEH has provided continuous technical assistance to the sponsoring organizations on exhibition and program development, fundraising, publicity and promotion, collaboration, and budget planning, all of which will benefit these organizations long after the Smithsonian exhibit has left town.

**Yesterday's Tomorrows:  
Past Visions of the  
American Future  
OG 03-772-109-114  
& 03-772-205-206  
\$16,000**

## *Yesterday's Tomorrows: Past Visions of the American Future*

### YESTERDAY'S TOMORROWS HOST SITES

#### MINDEN

Minden Chamber of Commerce  
Audrey Flournoy

#### JEANERETTE

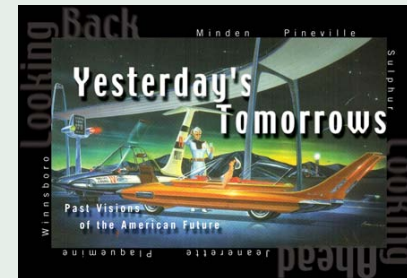
Jeanerette Bicentennial Park  
and Museum  
Darlene Derise

#### PINEVILLE

Old Town Hall  
Museum  
Oberia Price

#### PLAQUEMINE

Iberville  
Museum  
Louis J.  
Nicolosi



#### SULPHUR

Brimstone Historical Society  
Jason A. Barnes

#### WINNSBORO

The Princess Theatre  
Naomi Cordill

## *Southern Humanities Media Fund*

Founded in 1991, the Southern Humanities Media Fund is a collaboration of 10 state humanities councils in the South. The SHMF supports film, video, and audio productions focused on the history and culture of the American South. The LEH has contributed a total of \$45,000 to the SHMF since joining the group in 2002. Because the LEH reserves its Documentary Film and Radio Grants for projects on Louisiana history and culture, applicants whose projects concentrate on

**Southern Humanities  
Media Fund  
03-772-229  
\$20,000  
Rob Vaughan**

broader Southern topics are referred to the SHMF.

Since its inception, the SHMF has helped to underwrite 45 outstanding films, television programs and radio projects disbursing a total of \$1.6 million in grant funds. In 2003, the SHMF awarded \$130,000 to provide production support for three regional media projects: *Howard Thurman: In Search of Common Ground* (\$40,000), *The Seminole Wars* (\$60,000), and *Thurgood Marshall Before the Court* (\$30,000).

# LEH GRANTS |

# GRANTS

## Public Humanities Grants

THE LEH SUPPORTS CULTURAL EFFORTS throughout the state by awarding grants to local cultural organizations and institutions. These awards support large- and small-scale humanities public programs from university events to those sponsored by museums, libraries, cultural centers and historical societies. Public Humanities grants build bridges between academia and the community, giving Louisiana residents access to top university faculty and resources. Specific formats for these projects include, but are not limited to, public forums, conferences and workshops, interpretive exhibits, and film and music lecture series.

Public Humanities grants awarded in 2003 included Documentary Film and

Radio projects as well as Louisiana Publishing Initiative grants.

■ **BEYOND AUDUBON: THE REDISCOVERY OF ANDREW JACKSON GRAYSON, LOUISIANA'S FORGOTTEN ARTIST**

03-772-157 / \$10,426  
Schepis Foundation, Inc.  
Marie Keahey  
An interpretive exhibit on the life and art of the Northeast Louisiana painter known as "the Audubon of the West."

■ **PICTURES THAT TELL STORIES: LITERATURE & LEGENDS THROUGH THE VISUAL ARTS**

03-772-158 / \$17,973  
Meadows Museum of Art  
Diane G. Dufilho  
Annual public lecture series and special museum forum developed in tandem with the Meadows Museum of Art's exhibitions and permanent collections.

■ **ART & ARCHAEOLOGY: ST. AUGUSTINE'S SHARDS OF HISTORY**

03-772-160 / \$10,050  
Ogden Museum of Southern Art  
Ann Rowson-Love  
A public exhibition and lecture series inspired by an archaeological dig at St. Augustine



An exhibit at the Schepis Museum in Columbia celebrated the works of artist and Louisiana native Andrew Jackson Grayson, the "Audubon of the West."



The Louisiana Art & Science Museum and Louisiana's Bicentennial merged in an exhibition featuring Josephine, Napoleon's wife.

Church in the Trémé section of New Orleans, one of the oldest African American neighborhoods in America.

■ **JOSEPHINE, LE GRAND AMOUR DE NAPOLEON**

03-772-162 / \$9,271  
Louisiana Art and Science Museum  
An exhibition, featuring Napoleon's wife, Josephine, in conjunction with the statewide celebration of the Bicentennial of the Louisiana Purchase.

■ **THE OTHELLO PROJECT**

03-772-166 / \$7,534  
University of Louisiana at Lafayette  
Sarah Stravinska  
A series of presentations, investigating the various artistic takes on this Shakespearean tragedy through opera, dance and film.

■ **THOMAS JEFFERSON: HIS LIFE, TIMES & LEGACY: A COMMUNITY FORUM**

03-772-167 / \$13,600  
LSU-Shreveport  
William D. Pederson  
A three-day community forum, exploring America's renaissance president and how his legacy influenced Abraham Lincoln.

■ **LOUISIANA PURCHASE: FACES AND CULTURES OF YESTERDAY AND TODAY**

03-772-169 / \$18,545  
Louisiana State University  
Yvonne Fuentes  
The five-day symposium celebrated the Bicentennial of the Louisiana Purchase by examin-

ing the state's multiethnic and multicultural heritage.

■ **LOUISIANA INDIAN HERITAGE ASSOCIATION'S 37TH ANNUAL FALL POWWOW & 38TH ANNUAL SPRING POWWOW**

03-772-170 / \$16,405  
Louisiana Indian Heritage Association, Inc.  
Andrea Randazzo  
Supported interpretive events at two Native American festivals including symposia, cultural demonstrations, exhibits, authentic music, crafts and storytelling.

■ **LOUISIANA FOLKLIFE FESTIVAL 2003**

03-772-171 / \$16,068  
City of Monroe  
J. Michael Luster  
Two-day free event offered examinations of narrative, music, craft and foodways in the context of family, ethnic, occupational, regional, religious, age-, and gender-based folk groups.

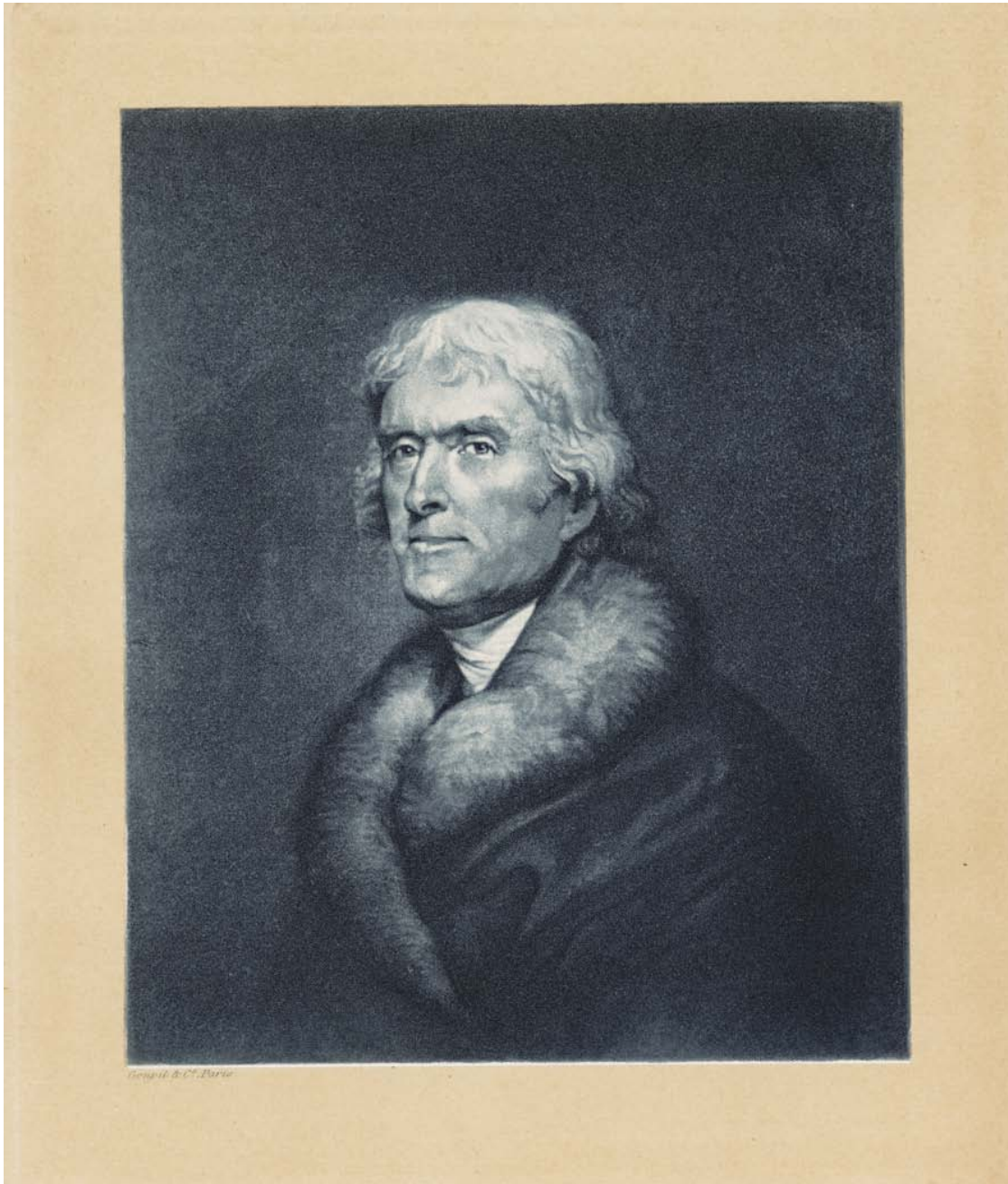
■ **2003 LOUISIANA BOOK FESTIVAL**

03-772-173 / \$14,429  
Louisiana Library Foundation  
Rod Mills  
Second annual festival celebrated many of Louisiana's best poets, writers and storytellers in a daylong program of readings, discussions and performances.

■ **WORDS & MUSIC: A LITERARY FEAST IN NEW ORLEANS**

03-772-175 / \$15,200





LSU-Shreveport hosted a three-day forum on Thomas Jefferson, America's renaissance president.

The Pirate's Alley  
Faulkner Society, Inc.  
Rosemary James  
Annual event celebrates the life  
and works of William Faulkner.

■ **LOUISIANA CROSSROADS  
SEASON 4**

03-772-178 / \$14,700  
Acadiana Arts Council  
Todd Mouton  
Informance and radio broad-  
cast series featured 12 events  
combining performances by  
acclaimed musicians with  
scholar-led discussions.

■ **MUSIC AT THE MINT**

03-772-179 / \$5,715  
Louisiana Museum Foundation  
Steve Teeter  
Ninth season of this popular  
series of music informances at  
the Louisiana State Museum.

■ **BANNERS: THE MCNEESE  
ARTS & HUMANITIES SERIES**

03-772-208 / \$7,800  
McNeese Foundation  
Janet Allured  
Annual lecture series that fea-  
tured talks by distinguished  
scholars John Michael Vlach,  
Muhsin Jassim al-Musawi, and  
Charles Kimball.

■ **"THE ANNE FRANK  
STORY" EXHIBIT**

03-772-216 / \$4,641  
Friends of the Library, Iberia  
Parish Public Library  
Shane K. Bernard, Ph. D.  
Exhibit and 30-minute video on  
the diary of a young Holocaust  
victim. Program included public  
lectures by scholars and a  
Holocaust survivor.

*Documentary  
Film & Radio  
Grants*

DOCUMENTARY FILM  
AND RADIO PROJECTS  
are the LEH's most cost-  
effective grants. These pro-  
jects have the potential to  
reach all Louisiana resi-  
dents simultaneously  
through broadcast on public  
radio or television. Actual  
audience numbers show  
that a documentary film can  
be provided to a Louisiana  
audience for as little as 10  
cents per viewer. In addi-  
tion, our efforts have made  
the LEH the state's largest  
supporter of documentary  
film and radio projects for  
more than 20 years. Films  
funded by the LEH are  
made available after broad-  
cast through the Louisiana  
State Library Audiovisual  
Resource Center. All films  
published in the LEH Media  
Catalog are available to  
Louisiana residents with  
library cards.

■ **QUEEN FOR A DAY**

03-772-184 / \$14,800  
Video Veracity, Inc.  
Rebecca Snedeker  
Documentary film about the  
old-line debutante and carnival  
society of New Orleans.



The documentary film *Queen for a Day* showed New Orleans' old-line debutante and carnival society.

■ **THE JAMES BLACK RADIO PROJECT**  
 03-772-187 / \$20,940  
 Center for Gulf South History and Culture  
 David Kunian  
 Radio documentary on legendary New Orleans drummer James Black and his contributions to the city's rich musical heritage.

■ **GERMAN NEW ORLEANS**  
 03-772-220 / \$24,116  
 WYES-TV  
 Terri Landry  
 Third in a series of documentary films about the contributions of various ethnic groups to the history and culture of New Orleans.

■ **THE CREOLES OF CANE RIVER**  
 03-772-221 / \$25,500  
 St. Augustine Historical Society  
 Bill Rodman  
 Documentary film on the emergence of a multi-ethnic race and culture unique to Louisiana.

■ **SIGNPOST TO FREEDOM: THE 1953 BATON ROUGE BUS BOYCOTT**  
 03-772-225 / \$14,931  
 Foundation for Excellence in Louisiana Public Broadcasting  
 Christina Melton  
 Documentary film chronicling events leading to the first large-scale bus boycott challenging segregation in U.S. history.

*Louisiana Publishing Initiative*

SEVERAL YEARS AGO, the LEH established its Louisiana Publishing Initiative grants to help writers and photographers tell the endless stories of Louisiana's history, landscape, people, towns and cities, triumphs and tragedies, music and literature, and architectural monuments to its living and dead. Thanks in part to these grants, writers, photographers and publishers have produced for the public many outstanding publications that explore Louisiana's contribution to the humanities in literature, history, languages, music, cultural anthropology and folklife. LPI grants, which can be made directly to writers and photographers or to publishers, are awarded annually on a competitive basis. The goal is to increase the quality and quantity of books published on Louisiana topics in the humanities that are of interest to general audiences. The list of 2003 LPI grants follows:

■ **LOUISIANA'S CAJUNS  
AT THE CROSSROADS**

03-772-144 / \$4,000

Lee Celano

Photographer Lee Celano captures the Americanization of Cajun Louisiana.

■ **GREEK REVIVAL TO  
GREEK TRAGEDY: THE LIFE  
& WORK OF HENRY HOWARD**

03-772-147 / \$5,500

Robert S. Brantley

Architectural legacy of one of Louisiana's most prominent 19th century architects explored in this photographic survey.

■ **PROCEEDINGS OF THE  
LOUISIANA PURCHASE  
BICENTENNIAL CONFERENCE,  
NEW ORLEANS,  
JANUARY 22-25, 2003**

03-772-151 / \$4,000

Paul E. Hoffman

Published papers presented at the Louisiana Purchase Bicentennial Conference, sponsored by The Historic New Orleans Collection, Louisiana Historical Association and LEH.

■ **DO NOT TEAR UP MY  
EARTH: DOCUMENTING  
WOMEN'S VOICES IN  
LOUISIANA'S GRASSROOTS  
ENVIRONMENTAL MOVEMENT,  
1970-1990**

03-772-152 / \$4,000

Peggy Frankland

Book explores the roles and contributions women have made in Louisiana's environmental movement.



The works of prominent 19th-century Louisiana architect Henry Howard inspired a photographic survey.



Louisiana photographer Clarence John Laughlin's images captured a fading glimpse of a by-gone era in *Haunter of Ruins*.

■ **JOHN McDONOGH, PUBLIC & PRIVATE**  
 03-772-153 / \$4,000  
 Dayna Harpster  
 Biography of 19th Century philanthropist John McDonogh, who left his fortune to creating public schools for the children of New Orleans and Baltimore.

*Outreach Grants*

LEH Outreach Grants encourage community groups throughout the state to develop humanities projects that celebrate and preserve local culture and heritage, as well as introduce people to new ones. Designed to fund programs of three months or less in duration, these grants of up to \$2,500 provide for a wide range of interests and needs in a state of such great diversity. In 2003, Outreach Grants made a significant difference in the cultural life of Louisiana's residents in both urban and rural areas.

■ **ALNICE CLEOPATRA VINCENT / ELOISE JOHNSON CONVERSATION**

OG 03-772-075 / \$2,000  
 Black Heritage Festival of Louisiana  
 Stella Miller  
 Dr. Eloise Johnson conducted a public interview with visual artist Alnice Cleopatra Vincent, exploring the influence of African motifs and rural southern culture in her work.

■ **PUTTING A FACE ON ACADIAN HISTORY**  
 OG 03-772-081 / \$2,500  
 Acadian Memorial Foundation  
 Brenda C. Trahan  
 Production of an audio-interactive component that builds upon the influence and work of Robert Dafford's murals of refugee Acadians with authenticated first-person accounts read by professional actors.

■ **IN CELEBRATION OF THE PURCHASE: CARTES HISTORIQUE DE LOUISIANE**  
 OG 03-772-082 / \$2,400  
 Nicholls State University  
 Carol Mathias  
 Exhibit of 18th- and 19th-Century Louisiana maps with a panel discussion about the relevance of these maps to the Louisiana Purchase.

■ **LOUISIANA'S CULTURAL HERITAGE: IMAGES DE FRANCE**  
 OG 03-772-085 / \$1,409  
 Vermilion Parish Tourist Commission  
 Lynn Ammon Hair  
 An exhibit of Lee Estes's photographs of France, designed to reveal the similarities and differences between France and Louisiana.

■ **BAYOU LAFOURCHE HERITAGE CELEBRATION**  
OG 03-772-087 / \$2,500  
Bayou Civic Club  
Henri Boulet  
Panel discussions on the influences of the Louisiana Purchase, featuring scholars Gerald Bodet, Raphael Cassimere, David Cheramie, Barry Ancelet, John Doucet and Günter Bischof.

■ **CLAIBORNE PARISH IN THE 1920S: THE OIL BOOM**  
OG 03-772-088 / \$1,000  
Herbert S. Ford Memorial Museum  
Linda Volentine  
Planning grant to develop an interpretive exhibit focusing on the discovery of oil in Claiborne Parish and its impact on the life, culture and society of north Louisiana.

■ **SAVING OUR LOCAL BLACK CULTURE & HERITAGE**  
OG 03-772-090 / \$1,484  
Centennial Cultural Center, Inc.  
Deanie Lofton  
Discussion and informational brochure on the heritage of African-Americans in LaSalle Parish by Dr. Anna C. Burns.

■ **THE SANKOFA SERIES**  
OG 03-772-091 / \$2,000  
Pamoja Art Society  
Leia Lewis  
Two lectures by Willie Burton and Ernest Lampkins for The Sankofa Series, a project that commemorates the African and African-American cultural heritage of Louisiana.

■ **FLETCHER LECTURE SERIES WITH MAXINE HONG KINGSTON**  
OG 03-772-092 / \$2,000  
Nicholls State University  
Gina MacDonald  
Award winning Chinese-American novelist, short story writer and poet, Maxine Hong Kingston was the keynote speaker for the 2003 Fletcher Lecture Series at Nicholls.

■ **TOURO SYNAGOGUE HISTORY ROAD SHOW**  
OG 03-772-093 / \$850  
Touro Synagogue  
Lester Sullivan  
A one-day "history road show" designed to collect oral histories and archival material for an exhibition of Jewish Life in New Orleans for Touro Synagogue.

■ **SAINTS & SINNERS: A LITERARY EVENT OF THE NO/AIDS TASK FORCE**  
OG 03-772-094 / \$2,500  
NO/AIDS Task Force  
Paul J. Willis  
Panel discussions focusing on the history of publishing at a three-day literary festival featuring authors and scholars of gay and lesbian literature.

■ **DIXIE OVERLAND HIGHWAY (US 80) IN LOUISIANA, A PARTIAL PERSPECTIVE**  
OG 03-772-099 / \$1,000  
Friends of the Library – ULM  
H. Glenn Jordan  
Planning grant to collect and organize photos and materials for an exhibition on the Dixie Overland Highway.

■ **LOUISIANA FILMMAKERS**  
OG 03-772-101 / \$2,425  
Ascension Parish Library  
John R. May  
Film discussion series, celebrating the Bicentennial of the Louisiana Purchase, featuring work by film writers, actors, cinematographers, directors and producers influenced by the state and its diverse cultures.

■ **LOUISIANA PURCHASE BICENTENNIAL TRAVELING DISPLAY**

OG 03-772-104 / \$2,500  
Ouachita Parish Public Library  
Julie Crump  
In commemoration of the Bicentennial, the library hosted a traveling exhibit showcasing the development of the Louisiana Purchase territory.

■ **"COFFEE & CONVERSATION" A SERIES OF LITERARY DISCUSSIONS**  
OG 03-772-106 / \$2,000  
Tennessee Williams/New Orleans Literary Festival

Paul J. Willis  
Monthly literary series at the Jefferson Parish Main Library with notable writers discussing topics ranging from Storyville to Martha Washington.

■ **SWAN SERIES: "A HOUSE NOT MEANT TO STAND" LITERARY DISCUSSIONS**  
OG 03-772-107 / \$1,472  
Shakespeare Festival at Tulane  
Aimee Michel  
Workshop presentations of "A House Not Meant to Stand," an unpublished play by Tennessee Williams, with accompanying discussion sessions moderated by Elizabeth Barron.

■ **FANFARE HEADLINER: RICK BRAGG**  
OG 03-772-117 / \$2,500  
Southeastern Louisiana University  
Donna Gay Anderson  
Pulitzer Prize winning author and former New York Times journalist Rick Bragg was the featured headliner of this month-long annual cultural festival.




---

The annual Fanfare festival at Southeastern Louisiana University in Hammond attracted Pulitzer Prize-winning author Rick Bragg.

■ **CREOLE LEGACIES:  
THE CURRENT STATUS  
& FUTURE PROSPECTS OF  
CREOLE STUDIES RESEARCH**  
OG 03-772-118 / \$2,500  
Tulane University  
Thomas A. Klingler  
Conference was developed to  
bring together members of the  
Creole community with schol-  
ars on all aspects of Creole  
studies.

■ **TOM DENT  
LITERARY FESTIVAL**  
OG 03-772-119 / \$2,000  
New Orleans Public Library  
Foundation  
Valencia Hawkins  
Annual three-day literary festi-  
val, promoting African  
American literature and a  
keynote address by featured  
author Kysha N. Brown.

■ **WHISPERINGS:  
A COVINGTON CEMETERY  
LIVING HISTORY TOUR**  
OG 03-772-120 / \$1,850  
St. Tammany Parish Library  
Linda Brown-Kubisch  
Costumed re-enactors assumed  
the roles of long-dead  
Covington residents for visitors  
to this historic cemetery on All  
Saints Day.

■ **RELIVE HISTORY  
WITH JIM BOWIE**  
OG 03-772-122 / \$2,000  
Vidalia Chamber of Commerce  
Aissa L. Wiggins  
Historian Jack R. Edmondson  
reprised his role as the leg-  
endary Jim Bowie in three sep-  
arate events at the annual Jim  
Bowie Days town festival.

■ **HAUNTER OF RUINS:  
THE PHOTOGRAPHY OF  
CLARENCE JOHN LAUGHLIN**  
OG 03-772-123 / \$2,500  
Opelousas Museum of Art  
Keith J. Guidry  
Exhibition of prints by the  
renowned Louisiana master  
photographer Clarence John  
Laughlin and lecture by John  
H. Lawrence of The Historic  
New Orleans Collection.

■ **KILLING GROUND:  
PHOTOGRAPHS OF THE  
CIVIL WAR & THE CHANGING  
AMERICAN LANDSCAPE**  
OG 03-772-124 / \$2,500  
Contemporary Arts Center,  
New Orleans  
Rashida Ferdinand  
Panel discussion of the exhibi-  
tion, "Killing Ground:  
Photographs of the Civil War  
and the Changing American  
Landscape," a photographic  
journey of 62 battlefield sites.

■ **THE LOUISIANA PURCHASE  
LEGACY & PROMISE: A FILM  
SERIES**  
OG 03-772-128 / \$1,967  
Delta FilmWorks  
Bette J. Kauffman  
Two film series explored the  
cultural legacy of the Louisiana  
Purchase and its continuing  
effect on contemporary  
Louisiana culture.

■ **FROM HARLEM TO NEW  
ORLEANS: A CELEBRATION  
IN WORDS & MUSIC**  
OG 03-772-131 / \$2,000  
Louisiana Philharmonic  
Orchestra  
Babs Mollere  
Development of concert infor-



mances on the history of the  
Harlem Renaissance to accom-  
pany a new concert series fea-  
turing the music of the period.

■ **EVERYTHING IS LOVELY**  
OG 03-772-132 / \$2,450  
G.H.B. Jazz Foundation in  
New Orleans  
Michael John Burns  
One-hour radio documentary  
on Harold Dejean, founder of  
the Olympia Brass Band, who

almost single-handedly secured  
the continuation of the New  
Orleans brass band tradition.

■ **COMMODORE PERRY'S  
150-YEAR LEGACY:  
TAKAMINE, HEARN & OTHER  
TIES TO NEW ORLEANS**  
OG 03-772-136 \$1,350  
Japan Society of New Orleans  
Nancy Turner  
Presentations by Naoyuki  
Agawa, Joan Bennett and

**Contrasting scenes from  
then and now — like these  
from Baton Rouge — were  
featured in *Killing Ground:  
Photographs of the Civil  
War and the Changing  
American Landscape.***



Charles Chamberlain to commemorate the 150th anniversary of Commodore Perry's visit to Japan.

■ **A DISCUSSION OF THE SANTA ELENA ARCHAEOLOGICAL SITE & RECENT WORK IN LOUISIANA & THE LOWER MISSISSIPPI VALLEY**  
OG 03-772-137 / \$2,146  
Central Louisiana Archaeology Chapter, Louisiana

Archaeological Society  
Nancy Affeltranger  
Keynote presentation by Dr. Stanley South on the Santa Elena archaeological site, occupied by the Spanish and the French as early as 1566.

■ **YORUBA MYTHS & THE HUMANIZING OF THE GODS**  
OG 03-772-139 / \$2,000  
Loyola University  
Phanuel Egejuru

Public lecture by Nigerian playwright and Nobel Laureate Wole Soyinka on African concepts of God, the nature of God and the relationship between God and humans.

■ **THE TRUTH THAT NEVER HURTS: 30 YEARS OF WRITING & ORGANIZING FOR JUSTICE & SOCIAL CHANGE — A LECTURE BY BARBARA SMITH**  
OG 03-772-141 / \$1,500

University of New Orleans  
Janelle L. White  
Scholar-activist Barbara Smith presented the inaugural lecture launching UNO's Women's and International Studies bachelor of arts programs.

■ **DARING WOMEN IN THE ENLIGHTENMENT**  
OG 03-772-142 / \$1,500  
LSU-Shreveport  
Diane E. Boyd  
Dr. Paula Backscheider, scholar of 18th Century and women's studies, presented the plenary talk at this symposium.

■ **THIRD WORLD STUDIES DURING THE BICENTENNIAL OF THE LOUISIANA PURCHASE**  
OG 03-772-143 / \$1,000  
LSU-Shreveport  
Marguerite R. Plummer  
Plenary addresses by Thelma Thompson and A.B. Assensoh at the 21st annual meeting of the Association of Third World Studies.

■ **KEEPING SECRETS: WOMEN, FICTION & THE SOUTH**  
OG 03-772-144 / \$2,415  
Ascension Parish Library  
Mimi Foster  
Reading program, featuring five Southern women's novels with discussions on issues of regional identities based on shared histories, race, communities and cultures.

■ **THE WILLIAM BEECHER STUDY PROJECT**  
OG 03-772-145 / \$1,000  
Louisiana State University  
Maia Jelanak  
Planning grant to support the

interpretation of works by William Beecher, an outsider artist who spent most of his life as a patient in state mental health facilities.

■ **EXILE, SEGREGATION & THE LANGUAGE AND POLITICS OF IDENTITY**  
OG 03-772-146 / \$1,818  
Louisiana State University  
Lisa Costello  
Award-winning poet  
NatashaTretthewey gave the keynote presentation at the LSU English Graduate Student Association's annual conference.

■ **BIRDSPACE: A POST-AUDUBON ARTISTS AVIARY**  
OG 03-772-147 / \$2,500  
Contemporary Arts Center  
David S. Rubin  
Artists Jacqueline Bishop, Mary Blue, Donna Bonner and John O'Neill discussed the humanistic themes of the exhibition.

■ **CREATIVE ALLIANCES IN NEW ORLEANS: A FORUM FOR ARTS & CULTURAL ADMINISTRATORS, CITY OFFICIALS, ARTISTS, & FOUNDATION DIRECTORS**  
OG 03-772-149 / \$1,000  
Center for Arts and Culture and Contemporary Arts Center  
Mary Lee  
Forum for arts and cultural administrators, city officials, individual artists and foundation directors to bring a national cultural policy perspective to New Orleans.

# LEH HUMANITIES AWARDS |

On April 16, 2003, Louisiana Governor Murphy J. Foster, state Division of Administration Commissioner Mark Drennen and other Louisiana residents received special humanities awards presented by the Louisiana Endowment for the Humanities during a ceremony at the Governor's Mansion in Baton Rouge.

Each year, the LEH presents its awards to Louisianians and others who have made outstanding contributions to the study and understanding of the humanities and Louisiana culture. Foster and Drennen received the Chair's Award for Institutional Support, which is awarded by the Louisiana Endowment for the Humanities, or LEH, to individuals who demonstrate outstanding support for humanities organizations in Louisiana. In naming Governor Foster and Commissioner Drennen, the LEH Board of Directors said the officials had demonstrated unprecedented support for the humanities in Louisiana during the previous seven years. Also receiving 2003 Humanities awards were:

- LEH Humanist of the Year — Beth Willinger, New Orleans resident and executive director of the Newcomb College Center for Research on Women at Tulane University. Willinger has focused both her professional career and civic involvements on improving opportunities for and the lives of women. She serves as vice chair for the Louisiana Women's Policy and Research Commission. In addition, Willinger has been a board member of the National Council for Research on Women and is currently researching women's employment in the New Orleans gaming industry.

- Lifetime Achievement Award — James F. Sefcik, New Orleans resident and director of the Louisiana State Museum, for 15-year leadership and tenacity in spreading the history and culture of Louisiana around the state in a wide array of exhibits.

- Special Humanities Awards were presented to Olivia Pass of Thibodaux, professor of languages and literature at Nicholls State University in Thibodaux, who has served as a scholar for numerous LEH programs including Prime Time Family Reading Time, Readings in Literature and Culture, and Teacher Institutes for Advanced Study; Judy Boyce, Baton Rouge resident and youth services librarian at the West Baton Rouge Parish Library, who has coordinated over ten LEH Prime Time Family Reading Time programs; David Moore of



*LEH Humanities Awards winners for 2003 were, seated from left, Olivia Pass, Beth Willinger, Deborah Robertson, Dianne Brady; standing, David Moore, Reba Capers (accepting for the late Lloyd Vogt), Jay Edwards, Rachel Brittain, James Sefcik, Sharon Cormier, Bryan Gowland, Morris Taft Thomas, Judy Boyce and William Detweiler. Not shown are Gov. Mike Foster, Mark Drennen, and Marcel Boyer.*

New Orleans, specialist and department chair of Louisiana History at Loyola University, who has led 23 LEH Readings in Literature and Culture programs throughout the greater New Orleans area; and, Deborah Robertson of Chicago, director of the Public Programs Office of the American Library Association, whose leadership helped expand Prime Time nationally to 32 states and the Virgin Islands.

- Book of the Year awards went to "Historic Buildings of the French Quarter" by Lloyd Vogt of New Orleans and to Marcel Boyer and Jay Edwards' "Plantations by the River" for advancing an understanding of and appreciation for Louisiana's architectural history.

- Humanities Teacher of the Year awards went to Bryan Gowland, an Abita Springs resident and retired history teacher in the St. Tammany School system; Sharon Cormier, Lake Charles resident and social studies teacher at South Beauregard High School; and Rachel Brittain of Natchitoches for her work at Weaver and Provencal elementary schools.

- Dianne Brady of Monroe was recognized for 10 years of employment at the LEH as project director of PRIME TIME FAMILY READING TIME®.

Awards also went to two LEH board members who retired in 2002, Morris Taft Thomas of Alexandria and William Detweiler, a Metairie lawyer who resides in New Orleans.



# LEH PAST BOARD MEMBERS |

Suzan G. Allen  
*Lafayette*

Vaughan Baker, Ph.D.  
*Lafayette*

Dr. A. David Barry  
*Lafayette*

Melinda Bartley, Ph.D.  
*New Orleans*

Reginald Bess, Ph.D.  
*Langston*

Warren M. Billings, Ph.D.  
*New Orleans*

Elizabeth Bingham  
*Baton Rouge*

Rabbi Murray Blackman  
*New Orleans*

Peggy Brian  
*Alexandria*

Mark T. Carleton, Ph.D.  
*Baton Rouge*

Thomas Chambers, C.S.C., Ph.D.  
*New Orleans*

Richard Chardkoff, Ph.D.  
*Monroe*

Millie M. Charles  
*New Orleans*

Joy Clemons, J.D.  
*Baton Rouge*

Henry Cobb, Ph.D.  
*Baton Rouge*

Glenda Bryan Cooper  
*Shreveport*

Jeff Cowart  
*Leesburg*

Hon. James J. Cox  
*Lake Charles*

Michael Craft  
*Shreveport*

Betty Lee Crain  
*Monroe*

Richard E. D'Aquin  
*Lafayette*

Moselle Dearbone, Ph.D.  
*Alexandria*

Francis A. DeCaro, Ph.D.  
*Baton Rouge*

Hon. James L. Dennis  
*New Orleans*

William M. Detweiler  
*New Orleans*

Dardanella Ennis, Ph.D.  
*Grambling*

Randall Feldman  
*New Orleans*

Anne Fitzgerald  
*Alexandria*

Fred A. Frey  
*Baton Rouge*

Daniel M. Fogel  
*Baton Rouge*

Anthony J. Gagliano, Ph.D.,  
*New Orleans*

Antoine Garibaldi, Ph.D.  
*New Orleans*

Aline M. Garrett, Ph.D.  
*Lafayette*

Caroline Gilliland  
*Alexandria*

Sylvia Klumok Goodman  
*Shreveport*

Morgan J. Goudeau III, J.D.  
*Opelousas*

Alfred G. Guillaume, Ph.D.  
*New Orleans*

Edward Haas, Ph.D.  
*New Orleans*

Elton C. Harrison, Ph.D.  
*New Orleans*

Mrs. Danella P. Hero  
*Belle Chasse*

Otis A. Herbert, Jr., Ph.D.  
*Lafayette*

Homer L. Hitt, Ph.D.  
*New Orleans*

Sen. William Jefferson  
*New Orleans*

Ben D. Johnson  
*Natchitoches*

Jerah W. Johnson, Ph.D.  
*New Orleans*

Theodore R. Kauss, Ph.D.  
*Shreveport*

Peggy Kinsey  
*Shreveport*

Glenna Kramer  
*Franklin*

James H. Lake  
*Shreveport*

Beverly D. Latimer  
*Lafayette*

Frances L. Lawrence, Ph.D.  
*New Orleans*

Seraphia D. Leyda, Ph.D.  
*New Orleans*

Ann Lowrey  
*Alexandria*

Walter M. Lowery, Ph.D.  
*Shreveport*

Fr. George F. Lundy, Ph.D., S.J.  
*New Orleans*

Louis J. Lupin, J.D.  
*New Orleans*

Michael H. Madison  
*Shreveport*

Yale Mandel, Ph.D.  
*Shreveport*

Vincent Marino, Ph.D.  
*Lafayette*

Judy P. Martinez  
*Metairie*

Peter Mayer  
*New Orleans*

Mary G. McBride  
*Shreveport*

Jack McCarthy  
*Baton Rouge*

Kathleen Heim McCook, Ph.D.  
*Baton Rouge*

Alden J. McDonald  
*New Orleans*

Doris McWilliams  
*Shreveport*

David E. Middleton, Ph.D.  
*Thibodaux*

Saul Mintz  
*Monroe*

James Montgomery  
*Shreveport*

Sybil Morial  
*New Orleans*

Stephen A. Moses  
*New Orleans*

G. Leon Netterville, Ph.D.  
*Baton Rouge*

Paul T. Nolan, Ph.D.  
*Lafayette*

Hope Norman  
*Alexandria*

John M. Norris, Ph.D.  
*Lake Charles*

James L. Olney, Ph.D.  
*Baton Rouge*

Lise Pederson, Ph.D.  
*Lake Charles*

Huel D. Perkins, Ph.D.  
*Baton Rouge*

Emma Bradford Perry, Ph.D.  
*Baton Rouge*

Sheela Plater  
*Thibodaux*

Jessie J. Poesch, Ph.D.  
*New Orleans*

Nick Pollacia Jr.  
*Leesville*

Peggy Prenshaw, Ph.D.  
*Baton Rouge*

Sanna Randolph  
*Alexandria*

Andrew Reck, Ph.D.  
*New Orleans*

Jean Reeves  
*New Orleans*

Doris Reggie  
*Crowley*

Miles Richardson  
*Baton Rouge*

Mrs. Rupert Richardson  
*Baton Rouge*

Ronald Robert  
*New Orleans*

Ron Roberts, Ph.D.  
*DeRidder*

Sidney Romero, Ph.D.  
*Hammond*

Thomas Ruffin  
*Shreveport*

Jerome J. Salomone, Ph.D.  
*Hammond*

Edward E. Samaha, Ph.D.  
*Ruston*

William R. Savage, Ph.D.  
*New Orleans*

Darwin H. Shrell, Ph.D.  
*Baton Rouge*

Msgr. Alexander O. Sigur  
*Lafayette*

Lanier Simmons  
*Avery Island*

Hon. Anne L. Simon  
*New Iberia*

Lorraine Slacks  
*Monroe*

Fraser Snowden, Ph.D.  
*Natchitoches*

Robert C. Snyder  
*Ruston*

Thilo Steinschulte  
*Alexandria*

George A. Stokes, Ph.D.  
*Natchitoches*

Raleigh A. Suarez, Ph.D.  
*Lake Charles*

Carole R. Taylor, Ph.D.  
*New Orleans*

Cecil Taylor, Ph.D.  
*Baton Rouge*

Maxine Taylor, Ph.D.  
*Natchitoches*

Phyllis Taylor  
*New Orleans*

Ms. Sibal S. Taylor  
*Baton Rouge*

Hon. Gene Thibodeaux  
*Lake Charles*

Morris Taft Thomas  
*Alexandria*

Bailey Thompson  
*Shreveport*

Stan Tiner  
*Shreveport*

Rev. David Trickett  
*New Orleans*

Jane Ann Tudor  
*Pineville*

Sue Turner  
*Baton Rouge*

Charles Vincent, Ph.D.  
*Baton Rouge*

Nathaniel Wing, Ph.D.  
*Baton Rouge*

Robert C. Whitmore, Ph.D.  
*New Orleans*

Everett Williams, Ph.D.  
*New Orleans*

Alma Young, Ph.D.  
*New Orleans*

Rabbi Richard Zions  
*Shreveport*

# LEH DONORS

## \$ 5,000 +

Anonymous  
CLECO  
Hibernia National Bank  
Michael Sartisky  
Wheless Foundation

## \$ 1,000 - \$ 4,999

James Cahn  
Philip Earhart  
David Eppler  
Goldring Family Foundation  
Mr. & Mrs. Norman Kinsey  
Victoria & R. Lewis McHenry  
Alice Pecoraro  
W. Boatner Reily, III  
Frank Williams, Jr.

## \$ 500 - \$ 999

BellSouth  
Lorraine Brownell  
J. Scott Chotin, Jr.  
Charles & Kent Davis  
Hemelt and Foshee, LLC  
Mr. & Mrs. Thomas Kramer  
F. Charles McMains, Jr.  
Mr. & Mrs. Andrew Reck  
Ed Michael Reggie  
Stone Container Corporation  
Beth Willinger

## \$ 200 - \$ 499

Al Adams, III  
Suzan Allen  
Philip Andrepont  
Judy & Allain Andry, III  
Patricia Aura  
Elizabeth Bingham  
Jim Blanchard  
Corinne Lindy Boggs  
Dianne & Ben Brady  
Rachel Brittain  
Reba Capers  
Mary Louise Christovich  
Jo Ann Clevenger

J. Brandon Ewing  
Dr. & Mrs. Quentin Falgoust  
Robert Florence  
Mr. & Mrs. A. Glenn Flournoy  
Mr. & Mrs. Richard Ford  
Freeport-McMoran Foundation  
Gary Froeba  
Dianne & Ernest Gaines  
Martha Green  
Janet & Stephen Haedicke  
Gwendolyn Midlo Hall  
Lois Hawkins  
Danella Hero  
Laura Hudson  
William Jenkins  
Catherine Kuhlman  
Jane Legier  
Richard Levine  
Jeanne Linam  
David Marcantel  
Anna Marchiafava  
Melinda Mintz  
Mr. & Mrs. Saul Mintz  
Patrick Moore  
Willie Mount  
Laura Simon Nelson  
Mr. & Mrs. Gregory Nesbitt  
James Olney  
Eric Overmyer  
Jessie Poesch  
Helaine Razovsky  
Ronnie Robert  
Virginia Shehee  
Marilyn Sonnier  
Nicholas Spitzer  
E. Alexandria Stafford  
Ann & Ron Stokes  
Charles Vincent  
Neari F. Warner  
Marion Weiss  
Liz B. White

## \$ 35 - \$ 199

Lisa Abney  
Acadian Memorial Foundation  
Donald Adams  
Robin Albert  
R. Allen & LaDonna Alexander  
Mel Altschul  
Edith Ambrose  
Lauren Anderson

Lois Anderson  
Charles Aprill  
Muriel Arceneaux  
Steve Armbruster  
Edward Ashworth  
Jessie Austin  
Ruth Autin  
Barbara Avery  
Mrs. O. Avinger  
H. Parrott Bacot  
Robert Bailey  
George Bakowski  
Mr. & Mrs. Charles Baldrige  
Kathy Ball  
Dr. & Mrs. Robert Bareikis  
Jane Barham  
Doris Chase Baril  
Sylvia Barker  
Henrie Jo Barth  
Fredrick Barton  
C. Delle Bates  
Gloria Battiste  
Randal Beach  
Mrs. Vernon Beall  
James Beam  
Larry Becnel  
Cheryl Bedenbaugh  
Dorothy Bengé  
Herbert Benjamin, Jr.  
Marian Berkett  
Rosemary Bernard  
Carolyn Bertrand  
Marion Bienvenu  
Ann Biggers  
Marie-Noelle Bigot  
Gunter Bischof  
Michael Blache  
Bess Kelley Black  
Mr. & Mrs. Sidney Blitzer, Jr.  
John Bobear  
Charles Bolian  
Joyce Bonin  
Dorothy Bonner  
Fred Bookhardt  
Mr. & Mrs. Al Bordelon  
Bruce Bordes  
Joseph Borel  
Gary Bossenmeyer  
Douglas Bourgeois  
Judy Boyce  
Bonnie Boyd  
James Bradford  
Vernessa Bradford  
Patricia Brady  
Gary & Stephanie Braedt  
Dr. & Mrs. Frederick Brazda  
William Breaux, Jr.  
Jane Brewer  
Jamie Brodie  
Catharine Brosman  
Diana Broussard

Kathy Broussard  
Carmel Brown  
Charles Brown, Jr.  
Dorothy Brown  
Gayle Brown  
Laverne Brown  
Marilyn Brown  
Douglas Brumfield  
Cheryl Buckel  
Glenny Lee Buquet  
Joann Burak  
Pamela Burke  
Priscilla Burks  
Harold Burns  
Marda Burton  
Gail Byrd  
Joan Cain  
Joe Louis Caldwell  
Daniel Caplan  
Tamra Carboni  
Dr. & Mrs. Michael Carey  
Jennifer Cargill  
Russell Carl  
Terence & Susan Casey  
Dr. & Mrs. Joe Cash  
Robert Cavanaugh  
Charlotte Cavell  
Eddie & Faye Cazayoux  
John Charrier, Jr.  
Mary Chawla  
Elizabeth Chopin  
Catherine Clark  
Jan Clark  
Caroline Cody  
Ernest & Elinor Cohen  
Becky Collins  
Eleanor Colquitt  
Fannie Compton  
Judy Constantinides  
Jeannette Cook  
Judy Cooper  
Mark Cotten  
Jo Ellen Cotton  
Juanita Coutee  
Louise Couvillion  
Barry Cowan  
Dr. & Mrs. A.B. Cronan  
Kerry Cuccia  
Yvette Cuccia  
Cheryl Cunningham  
Jack Dampf  
James Danos  
Henry Dauterive, Jr.  
Joe Davenport, III  
Thomas David, Jr.  
Michael M. Davis  
Paul Davis, Jr.  
Sylvia Davis  
Frank A. deCaro  
Gary Stephen DeBlieux  
Jan DeCosmo

Gretchen Dean  
Linda Deane  
Keith Delhom  
Robbie & Jay Denny  
Dependable Bagging, Co., Inc.  
Mr. & Mrs. Don Descant  
Irene Di Maio  
Dr. & Mrs. Robert DiBenedetto  
Peter Dickinson  
Stevan Dittman  
Susan Dollar  
William Donnaway, Jr.  
Sharon Dooley  
Dorsey & Company, Inc.  
Brown Dossett  
Michael & Sharon Doucet  
Deanna Dowell  
David Duggins  
Sonja Dupois  
Marc Dupuy, Jr.  
JoAnne Durand  
James Durham  
Catharine Ecton  
Dale Edmonds  
Harry Edwards  
Jay Edwards  
Phanuel Egejuru  
Nannette Egros  
Pamela Ehlers  
Lolis Elie  
Ione Elioff  
Wanda Ellard  
Milton Ellis  
Mamie Elizabeth Elston  
David Erskine  
Neil & Glenda Erwin  
Clyde Lee Estes  
Mr. & Mrs. Ed Ewbank  
Rosemary & Randy Ewing  
Sean Ezell  
Gerald Fackrell, III  
Mignon Faget  
Joan Feibelman  
Randy & Madelaine Feldman  
Tom Fick  
Natalie Fielding  
Carolyn Files  
Julie Fishelson  
Marianne Fisher-Giorlando  
Faye Flanagan  
Jeri Ann Flynn  
Douglas Foard  
Henry Folse, Jr.  
Jeannette Fonte  
Carole Ford  
Dr. & Mrs. James Foster  
Richard Fowler  
Christy Frederic  
Frenzel Motors, Inc.  
Suzanne Friloux  
Funderburk & Herpin  
Jo Galle  
Antoine Garibaldi  
Shelia Gay  
Tom David Gay  
Jim & Judy Gibbs  
Karin & Larry Giger  
Shelby Gilley  
Shannon Glasheen  
Judy Gooch  
Sylvia Goodman  
Gretchen Goodrich  
Mrs. W.L. Grace, III  
Cheryl Graham  
Frank Granger  
Grant Parish Library  
Carolyn Gray  
Larry Gray  
Nancy Gray  
Randolph Green  
Josie Gristina  
Richard & Sharon Gruber  
Huey Guagliardo  
Wilfred Guerin  
Mr. & Mrs. Robert Guida  
Anne Guidry  
Paul Guidry  
Ronald Guidry  
Clarence Guillory, Jr.  
Sandra Gunner  
Rozelle Hahn  
Rebecca Hamilton  
Angela Hammerli  
Patricia Hardin  
Loretta Hargroder  
Charlotte Haring  
Tomas Harkey  
Mary Harlan  
O.L. Harper  
Dayna Harpster  
Byron Harrell  
Clyde Lee Harrelson  
Carolyn Harrington  
Delores Doga Harris  
Catherine Dessommes Hauck  
John Hauer  
Mrs. D.L. Hawkins Brooks  
Eddie Hebert  
Maria Hebert  
Jean Heid  
Cindy Heine  
Roman Heleniak  
Ronald Hendry  
David Henington  
Hermann-Grima Gallier  
Historic Houses  
William Hess  
Laurabeth Hicks  
Byron Hidalgo  
Justin Hinckley  
Louise Hoffman  
Kathleen Hoffpauir

David & Nicole Holcombe  
James Hollingsworth  
Marybelle Holstead  
Gregory Holt  
Holy Family Library  
Linda Holyfield  
Jane Honeycutt  
Gail Hood  
Hyatt Hood  
Beverly Hooks  
Donna Hopkins  
Ralph Horne  
Mary Howell  
Jamie Huard  
Remona Hudson  
Joanne Hummer  
Jonathan Hunter  
Margaret Hunter  
Patricia Hunter  
Dolliann Hurtig  
Daniel Hutton  
Iberia Parish Government  
Stephen Ingersoll  
Luis Ingles, Jr.  
Barbara Insidiosio  
Martha Irwin  
Sharon Isbell  
Joyce Jackson  
Carola Jacob  
Todd Jacob  
Edward Jahncke, Jr.  
Maia & Jay Jalenak  
A. Dale Johnson  
Jane Johnson  
Lawrence Johnson  
Shelley Johnson  
Bill Jones  
Virtle Jones  
Tom Jordan  
Maryann Joyner  
Megan Kamerick  
Charlene Kaough  
Mary Jane Karabin  
Marian & Randy Keator  
James Keller, Jr.  
Beverly Kelley  
Lisa Kelley  
Mary Kelly  
Judith Kelsey  
Jessica Kemm  
John Kemp  
John Kent  
Johannes Kilian  
Claire Killeen  
Margaret King  
Edith Kirkpatrick  
Milton Kleinpeter  
Carolyn Kolb  
Marjorie Kornhauser  
Virginia Kuizzweg  
Edward Kurtz

Earle Labor  
Errol & Peggy Laborde  
Michelle Lacour-Duval  
Caroline Lafourcade  
Lafourche Heritage Society  
Lafourche Parish Library  
David Lambert  
Mr. & Mrs. Olaf Lambert  
V. Lancaster  
Mr. & Mrs. Joe Land  
Mrs. James Landis  
Leroy Landon  
Anne Landry  
Marlin Landry  
Phillip Lank  
Noreen Lapeyre  
Walker Lasiter  
Lee Latta  
Ann Laury  
Marjorie Lavine  
Darrel LeJeune  
Lynn LeJeune  
Lois Leblanc  
Robert Leighninger, Jr.  
Bernice Lennox  
Saundra Levy  
Anthony Lewis  
Mrs. W.A.J. Lewis  
Linda Lightfoot  
Joyce & Roy Lilly  
Joyce Linde  
James Llorens  
Gary Lloyd  
Centennial Cultural Center  
Ana Lopez  
Denise Louvet  
John & June Lowe  
Cynthia Lowenthal  
Dr. & Mrs. Cedric Lowrey  
Fred Loy  
Mr. & Mrs. G. Lynn  
Irene Mackenroth  
Madison Historical Society  
Michael Madison  
Mary Ann Maguire  
Dana Main  
Helen Malin  
Brigitta Malm  
William Malone  
Oliver Martin  
Carol Mathias  
Barbara Mattingly  
Andrew Maverick  
John May  
Jonathan May  
Mr. & Mrs. Charles Mayer  
Peter Mayer Advertising  
Jere McBride  
Judith McBroom  
Elizabeth McBurney  
Edgar McCanless

Julie McCollam  
John & Kay McCray  
Ruth McCusker  
Fred McDonald  
Edward McGuire  
Melanie McKnight  
Scott McLeod  
Joan McLure  
Betty McRae  
Dennis McSeveney  
N. Meinel  
Doris Meriwether  
Evelyn Merz  
David Middleton  
Howard Mielke  
Rod Mills  
Edmond Miranne, Jr.  
Bruce Morgan  
Glenn Morgan  
Thomas Morris  
Dr. & Mrs. Robert Morrow  
Susan Muller  
Terrance Murphy  
Mr. & Mrs. Hunt Neely  
Carolyn Nelson  
Stella Nesanovich  
Albert Nevils  
Saidee Watson Newell  
Jennifer & Herbert Newman  
Judith Newman  
Mr. & Mrs. C. Howard Nichols  
Mr. & Mrs. Murff O'Neal, Jr.  
James Oakes, III  
William Oberhelman, Jr.  
Roger Ogden  
Ouachita Parish Public Library  
Maida Owens  
David Painter  
Dianne Pajaud  
Karen Palermo  
Charlene Parker  
Morton Parnell  
Leslie Parr  
Lewis Parrish  
Anika Parsons  
Beth & Paul Paskoff  
Charlotte Paslay  
Emily Pass  
Olivia Pass  
Marian Patterson  
Ann Patteson  
Mary Payne  
Howard Peabody  
Ellen & John Pecoul  
Bryan Pedeaux  
Barbara Peete  
Darlene Pelletier  
Elizabeth Penfield  
Karen Perschall  
Mary Peterson  
Pamela Petrie

Carol Phelps  
Faye Phillips  
Poplar Grove Plantation  
Gloria Powers  
Prescott Memorial Library  
Mary Louise Prudhomme  
Jon Pruet  
Jean & George Pugh  
Pamela Rabalais  
Raphael Rabalais  
Alwine Ragland  
Drew Ranier  
Sura Rath  
Mrs. C.E. Reed  
Elizabeth Reed  
Deborah Rehn  
Timothy Reilly  
Georgia Reine  
Margaret Rice  
Dr. & Mrs. Richard Leopold, Jr.  
Mary Richardson  
Virginia Rigamer  
Luisa Ripoll  
Christina Riquelmy  
Shirley Roberts  
William Robison  
Susan Rogers  
Mark Romig  
Armand Roos  
Mr. & Mrs. Harry Rosenberg  
Marion Rosser  
Anthony Rotolo  
Jenny & Robert Royer  
Sam Rykels  
Raymond Saadi  
Colleen Salley  
Mr. & Mrs. Salomon Lavalley  
Jerome Salomone  
Mona Lisa Saloy  
Ann Salzer  
C. Drew Sanders  
C.W. Sanders, Jr.  
Save Our Cemeteries, Inc.  
Alice Scheelar  
William Schenker  
Schepis Foundation, Inc.  
Claude Schlesinger  
Helen Schneidau  
Willie Schutz  
Duke Shackelford  
John Shackelford  
Mr. & Mrs. Wade Shaddock  
Maude Sharp  
Margaret Sharpe  
Harriet Sheehy  
Norma Sherman  
Robert Sherman  
Ruby Shrieves  
Linda Siegenthaler  
Pamela Sills  
Mr. & Mrs. John Simon

Catherine Simoneaux  
Lewis Simpson  
Mr. & Mrs. Mike Simpson  
Mrs. J. Smietana  
Susan Smith  
Elaine Smyth  
Tom Snedeker  
Fraser Snowden  
Karen Snyder  
Bernard Sontag, Jr.  
John Southerland  
Charla Spalluto  
Michael St. Martin  
Rose Anne St. Romain  
Grove Stafford, Jr.  
Camille Steen  
Paul Stekler  
Carter Stevens  
Jane Stewart  
M. Jean Stewart  
Stockwell, Sievert, Viccellio,  
Clements & Shaddock, L.L.P.  
U.H. Stoer  
H. Chris Stokes  
Ann Stratton  
Mr. & Mrs. F.W. Stromeayer  
Goodloe Stuck  
Anne Sturges  
Tara Sutton  
Ronald Swartz  
Mary Lee Sweat  
Harriet Swift  
Danille Tabler  
Taylortec, Inc.  
Terrebonne Parish Library  
Jervy Tervalon  
Elizabeth Thomas  
Morris Taft Thomas  
Marianne Thompson  
Mr. & Mrs. Jack Thomson  
Judith Thorne  
Carmelite Thornton  
Sue Anne Toms  
Anke Tonn  
Ann Torczon  
Brenda Comeaux Trahan  
Patrick Tremie  
Kate Trepagnier  
Tulane School of Medicine  
Sue Turner  
UNO Metro College  
Lorraine Underwood  
Dr. & Mrs. Jack Van Lopik  
Beth Vandersteen  
Renee Vanover  
Eugenia Veillon  
Mr. & Mrs. John Vercellotti  
Susie Victorian  
Craig Vincent  
Patricia Vincent  
Robbie Vitrano

Lydia Voigt  
Linda Volentine  
John Wafer  
Scott Wainwright  
Lynn & Monty Walford  
Kathy & Alan Walker  
Diane Walker  
Donald Walker  
Harriet Walker  
Eloise Yerger Wall  
Patricia Ward  
Joyce Warren  
Joyce Waters  
Angela Watkins  
Sue Weaver  
Nancy Webb  
Ronald Weems  
Jay Weigel  
Roy Weiner  
Jeanita West  
Susan & Joseph Wheeler  
Amy Whipple  
Ann White  
Gladys White  
Gregory White  
Ronald White  
Anne Wilbourne  
Sandra Wilkinson  
Connie Williams  
Everett Williams  
Joyce Williams  
J. Woodfin Wilson, Jr.  
Lidia Wilson  
Mary Ann Wilson  
Paul Wilson  
Bruce Wing  
George Wolfe  
Michael Womack  
Janet R. Wood  
Seborn Woods  
Ralph Woodward  
Carolyn Woosley  
Jan Wootan  
Cassie Worley  
Frederick Wright  
Eileen Wrigley  
Gayle Wykle  
David Yarbrough  
Dawn Young  
Geraldine Zauner  
L.R. Zipris



LOUISIANA  
ENDOWMENT  
FOR THE  
HUMANITIES

*the* LOUISIANA HUMANITIES CENTER *at* TURNERS' HALL  
938 LAFAYETTE STREET, SUITE 300  
NEW ORLEANS, LA 70113  
(504) 523-4352 *or toll-free in Louisiana* (800) 909-7990