



Department of
Environment and Conservation
Western Australian Herbarium



2007 Flora Survey of Wheatbelt Woodlands

*Encompassing surveys conducted in the Wheatbelt
zones of the following Bioregions:
Northern Sandplains, Mallee
and Avon Wheatbelt*



DEC Western Australian Herbarium



This flora survey of priority woodlands on private lands across the wheat belt of the Northern Agricultural Region and the Avon River Basin was conducted with the cooperation of the landholders, as part of the Woodland Watch and Healthy Ecosystems projects, funded by the Northern Agricultural Catchment Council and the Avon Catchment Council respectively.

Both projects are delivered by WWF-Australia with regional NRM investment from the Western Australian and Australian Governments through the Natural Heritage Trust and National Action Plan for Salinity and Water Quality programs.

Contents

INTRODUCTION	1
METHODOLOGY	3
TEN BY TEN METRE QUADRATS	3
RANDOM STRATIFIED COLLECTION.....	3
OVERALL ASSESSMENT	3
RESULTS	4
COLLECTIONS OF NOTE.....	4
COLLECTIONS OF GEOGRAPHICAL SIGNIFICANCE.....	6
CUMULATIVE FINDINGS	8
ACKNOWLEDGEMENTS	10
REFERENCES	10
MAP OF SURVEY SITES	11

Published 11 February 2009
© Western Australian Herbarium
Department of Environment and Conservation
Locked Bag 104 Bentley Delivery Centre Western Australia 6983

Introduction

Launched in 2000 by WWF-Australia, Woodland Watch commenced as a woodlands conservation project in the central Avon wheatbelt. From there it has grown to cover the much of the wheatbelt areas of the Northern Agricultural Region [NAR] and the Avon River Basin [ARB].

From the project's inception the Western Australian Herbarium (Department of Environment and Conservation) has collaborated with WWF providing professional flora survey, vouchering and data management services.

Initially the project received funding primarily through the Natural Heritage Trust. Since 2003 the project has been running in two regional NRM areas - the Northern Agricultural Region and the Avon River Basin – and has been supported through the regional investment processes of the Northern Agricultural Catchment Council and the Avon Catchment Councils respectively.

In 2005 WWF successfully tendered for the delivery of a continuation of these projects in these two NRM regions:

1. **Woodland Watch** for the Northern Agricultural Catchment Council [NACC]
2. **Healthy Ecosystems** for the Avon Catchment Council [ACC]

One of the major historic and current objectives of the initiative has been to carry out floristic surveys of selected priority remnant eucalypt woodlands of the wheatbelt of Southwest Australia – on private farmlands and other lands not within the conservation estate. The project area covers the Avon Wheatbelt bioregion, as well as parts of the Geraldton Sandplains and Mallee bioregions. It is situated in the South West Botanical Province of Western Australia and corresponds roughly to WWF's Global 200 Southwest Australian Ecoregion, which encompasses an area of 93,520 square kms, of which 93% has been cleared, predominantly for agriculture (Beard 1990).

Four woodland types considered by WWF-Australia to be amongst the most threatened eucalypt woodland communities of the NAR and ARB wheatbelt areas were selected for the conservation and extension project: those dominated by Salmon Gum (*Eucalyptus salmonophloia*), Gimlet (*E. salubris*), York Gum (*E. loxophleba*) and Red Morrel (*E. longicornis*). Broader priority-setting analyses of additional threatened ecosystems/communities are currently underway within both the NACC and ACC NRM regions.

The primary aims of the project continue to be to identify woodlands (and other priority ecosystems) of high conservation value in the NAR and ARB wheatbelt areas, to assist private landowners and rural communities to better manage and conserve these remnant woodlands, and to help landholders to better understand the major threats to these woodlands and their management needs. These include consideration of such impacts as over-clearing and grazing, which have contributed to the secondary problems of salinity, rising water tables, and soil compaction.

Conducting flora surveys in these woodland communities is considered an essential activity, to highlight their uniqueness and diversity, and to assess and report on their condition. Using this and other information, property owners can then be advised on how best to manage and protect their remnant vegetation through fencing and other management practices, and conservation support schemes such as covenants. Thus, through NACC's Woodland Watch and ACC's Healthy Ecosystems projects, it is possible to address some of the threats to the woodlands (and other priority ecosystems), including salinity. Future monitoring of the sites may provide data on the ability and rate at which these threatened ecosystems (communities) can recover from disturbance.

The role of the WA Herbarium in this project was to survey, identify and voucher all plant specimens collected from selected woodland sites. A total of 41 sites were surveyed in the first year (2000 – entirely ARB sites), followed by 21 sites in 2001 (entirely ARB sites), 25 sites in 2002 (entirely ARB sites), 25 sites in 2003 (entirely ARB sites), 35 sites in 2004 (10 NAR sites, the rest in ARB), 9 sites in 2005 (entirely NAR sites) and 30 sites in 2006 (10 NAR sites, the rest in ARB).

In 2007 a further 30 sites were surveyed (10 NAR sites, the rest in ARB) and 998 voucher specimens collected. To date this series of projects has sampled 216 discrete sites and collected a total of 8,021 voucher specimens, all curated by the DEC WA Herbarium in its facility in Kensington, Perth, Western Australia.

Methodology

Sites were surveyed and plants vouchered by Mike Hislop of the WA Herbarium, with the assistance of Diane Aynsley, Jenny Borger, Chris Curnow, Mike Griffiths and Helena Mills of WWF-Australia. As with previous Woodland Watch surveys, the methodology for each site visited in 2007 comprised three parts:

Ten by Ten metre Quadrats

10 × 10 metre quadrats were carefully located so as to provide a typical representation of species composition within the selected woodland type. As far as possible, all species found were collected. However, several sites in 2007 contained sterile grasses which could not be reliably identified (sometimes even to genus) in that condition. Each quadrat was permanently marked by a steel stake on the north-western corner, from which the coordinates were recorded using a GPS.

Random Stratified Collection

This involved a random walk covering the confines of the selected woodland, avoiding adjoining habitats to keep the integrity of survey purely to the targeted *Eucalyptus* woodland habitat.

Overall Assessment

An overall assessment of the condition of each site was made using procedures adopted by the Wildflower Society of Western Australia (Trudgen 1991).

This methodology was considered the most effective to achieve the objectives of the project within the time constraints.



Eucalyptus salubris [Photo: Richard McLellan/WWF-Australia]

Results

In 2007 a total of 30 sites were surveyed, resulting in 998 collections. 10 of the woodland sites surveyed were dominated by *Eucalyptus salmonophloia*, 4 by *Eucalyptus loxophleba*, 3 by *Eucalyptus longicornis*, 3 by *Eucalyptus salubris*, 6 by *E. wandoo*, and the others by other woodland types (the dominant species including *Allocasuarina huegeliana*, *Calycopeplus paucifolius*, *Banksia prionotes*, *Casuarina obesa*, *Eucalyptus macrocarpa*, *Eucalyptus kondininensis*, *Eucalyptus phaenophylla*, *Eucalyptus myriadena*). The selected sites varied in size and condition, from almost pristine to significantly degraded by many years of grazing.

One site (Site WW-201, a *Banksia prionotes* woodland site W of Goomalling) was found to have an exceptionally high numbers of species, producing voucher specimens of 61 species. Site WW-209, a mallee woodland of *Eucalyptus macrocarpa* W of Corrigin, produced 48 species. Sites 200 (an *Allocasuarina huegeliana* and *Calycopeplus paucifolius* scrub site SE of Wongan Hills) and 205 (a *Eucalyptus loxophleba* woodland site SE of Doodlakine) each recorded 46 species. The smallest collection was recorded for Site WW-189, a *Eucalyptus salubris* woodland SE of Latham, represented by 13 species.

Collections of note

Noteworthy collections from the 2007 survey can be summarised under the following categories:

Probable undescribed taxa

Andersonia sp. Kulin (J.M. Powell 2588). WW- 213. This informal name refers to a presumably unnamed taxon which is closely related to *A. parvifolia*. It appears to have a restricted distribution in the south-eastern wheatbelt.

Caesia sp. Wongan (K.F. Kenneally 8820). WW-194. Refers to a presumably unnamed taxon, which has also been known by the manuscript name *C. alfordii* ms. It is fairly widespread from north of Geraldton to the central wheatbelt.

Calandrinia sp. Blackberry (D.M. Porter 171). WW- 202. Considered by *Calandrinia* authority F. Obbens to be an unnamed taxon, it has mostly been confused in the past with *C. polyandra*. It is widely distributed across the drier parts of the greater south-west although may comprise more than one taxa (F. Obbens pers. comm.).

Lepidosperma sp. A2 Island Flat (G.J. Keighery 7000). WW- 213. Refers to a presumably unnamed taxon related to *L. viscidum*, a species which is now considered unlikely to occur in Western Australia (R. Barrett pers. comm.).

Rhagodia sp. Watheroo (R.J. Cranfield & P.S. Spencer 8183). WW-187/189/190. Another phrase name referring to a potentially distinct taxon which is somewhat intermediate morphologically between *R. drummondii* and *R. acicularis*. It occurs primarily in the northern portion of the Avon Wheatbelt.

Schoenus sp. smooth culms (K.R. Newbey 7823). WW- 209. Refers to taxon, thought to be unnamed, which is close to, but probably distinct from *Schoenus armeria*.

Senna sp. Pallinup River (J.W. Green 4847). WW- 206. This unnamed taxon is currently referred to by the above phrase name in the Western Australian Plant Census. It belongs in the *S. artemisioides* complex. It has a widespread distribution from the south-eastern wheatbelt to the south coast and then eastwards to beyond Balladonia.

Spergularia sp. 3 Bullfinch (R.A. Saffrey 905). WW- 208. Considered by Canberra-based taxonomist L.G. Adams, who is revising the genus, to represent an undescribed species related to *S. rubra*. It is apparently widespread across southern Australia.

Triglochin sp. B Flora of Australia (P.G. Wilson 4294). WW- 192/196/216. Refers to a taxon, probably unnamed, which is close to, but believed to be distinct from, *T. calcitrapa*. It is widely distributed in southern Western Australia.

Rare and Priority taxa

Nineteen mostly new populations of Rare and Priority taxa were recorded during this survey:

Taxon	Status	Site
• <i>Acacia lanuginophylla</i>	DRF	WW- 211 #1
• <i>Acacia errabunda</i>	P3	WW- 210
• <i>Astroloma recurvum</i> ms	P3	WW- 213
• <i>Bentleya spinescens</i>	P4	WW- 213
• <i>Blennospora phlegmatocarpa</i>	P3	WW- 204
• <i>Caladenia dundasiae</i>	P1	WW-195
• <i>Eucalyptus arachnaea</i> subsp. <i>arrecta</i>	P3	WW-187
• <i>Eucalyptus mimica</i> subsp. <i>mimica</i>	P3	WW- 212
• <i>Hakea chromatropa</i>	P1	WW- 198
• <i>Jacksonia rubra</i>	P2	WW- 201
• <i>Lepidobolus densus</i> ms	P3	WW- 201
• <i>Microcorys eremophiloides</i>	DRF	WW- 200
• <i>Papistylus grandiflorus</i>	P2	WW- 187
• <i>Phlegmatospermum drummondii</i>	P3	WW- 206, 212

• <i>Phlegmatospermum eremaeum</i>	P2	WW- 206
• <i>Stylidium coroniforme</i> subsp. <i>amblyphyllum</i>	P1	WW- 203 #2
• <i>Thomasia tenuivestita</i>	P3	WW- 199 #3
• <i>Thysanotus tenuis</i>	P3	WW- 205, 206
• <i>Triglochin stowardii</i>	P3	WW- 202

The symbol # after the site number indicates that the species was collected in an adjacent vegetation type and so was vouchered separately. The voucher collections for these species are as follows:

#1 M. Hislop & M. Mills MH 3733, #2 M. Hislop & M. Griffiths MH 3731, #3 M. Hislop & M. Griffiths MH 3730.

Collections of Geographical Significance

Taxon	Site	Notes
• <i>Acacia blakelyi</i>	WW- 201	At southern extremity of its range.
• <i>Acacia errabunda</i>	WW- 210	Significant northerly range extension for this Priority 3 taxon.
• <i>Caladenia cairnsiana</i>	WW- 203	The main distribution of this species is well to the south. This is one of 3 widely separated, apparently disjunct northern populations.
• <i>Caladenia magniclavata</i>	WW-197	The northernmost record of the species at Western Australian Herbarium. Together with an older collection from the same general area it appears to represent a disjunct northern population node.
• <i>Crassula colligata</i> subsp. <i>lamprosperma</i>	WW- 208	Substantial north-westerly range extension.
• <i>Drosera humilis</i>	WW- 201	Significant southerly range extension.
• <i>Hakea commutata</i>	WW- 193	Together with an older collection from the Moora area represents a northern outlier for the species.
• <i>Jacksonia acicularis</i>	WW- 201	Southerly range extension.
• <i>Lagenophora huegelii</i>	WW- 196	At northern extremity of its distribution.
• <i>Maireana enchylaenoides</i>	WW- 197	Northernmost record of this species for Western Australia.

- *Melaleuca pauperiflora* subsp. *fastigiata* WW- 189/190 These 2 collections together represent a northern range extension for this taxon.
- *Phlegmatosperma drummondii* WW- 212 Easterly range extension for this Priority 3 species.
- *Phlegmatosperma eremaea* WW- 206 Substantial westerly range extension for this Priority 2 taxon.
- *Plagiobothrys australasicus* WW- 202 This locality represents a major westerly disjunction for the species. See notes in 'other collections of interest' - detailed taxonomic study is required to assess whether this collection is a different taxon.
- *Schoenus latitans* WW- 209 Significant southerly range extension for this cryptic species.
- *Rhodanthe stricta* WW- 192 At south-western extremity of its distribution.

Other Collections of Interest:

Taxon	Site	Notes
• <i>Chenopodium desertorum</i> subsp. <i>microphyllum</i>	WW- 206/208/211	This rarely collected taxon was represented by less than a handful of wheatbelt collection prior to the beginning of the Woodland Watch program. It was vouchered three times this year, and these specimens, together with two earlier Woodland Watch collections, have significantly increased our knowledge of the distribution of this inconspicuous plant.
• <i>Drosera macrantha</i>	WW-191	The typical subspecies of <i>D. macrantha</i> is broadly circumscribed and probably comprises several taxa (A. Lowrie pers. comm.). The commonly encountered variant during Woodland Watch surveys is relatively robust, twining and with white flowers, although it is more usually seen in early fruit. By contrast this collection is notable because of the more slender, erect or weakly twining habit and pink flowers at peak anthesis.
• <i>Drosera</i> sp.	WW- 209	This collection is close to <i>D. parvula</i> but differs in having a more robust habit, very glandular scapes, and in the detail of the stipule character. Further study is needed to evaluate the significance of these differences but it seems quite possible that this is a currently unrecognised taxon.
• <i>Enchylaena</i> spp.	WW- 214	The co-occurrence of the two species of <i>Enchylaena</i> at this site is unusual and noteworthy.
• <i>Hibbertia stellaris</i>	WW- 201	This collection is atypical for the species in having shorter than normal leaves and peduncles, and in its occurrence on a dry rather than winter wet habitat. The potential taxonomic significance of these

- differences requires investigation.
- *Lepidosperma* spp. WW- 200/203/215/216 *Lepidosperma* is a large and complex genus of perennial sedges currently in the early stages of revision by Russell Barrett of Kings Park. Where previously relatively few, very broadly circumscribed species were recognised, Barrett will adopt much narrower taxonomic concepts leading to the addition of a great many new taxa for Western Australia. These four collections probably all represent unnamed but different taxa (R. Barrett pers. comm.).
 - *Melaleuca aspalathoides* WW- 195 A noteworthy local variant of what is, as currently recognised, a widespread and rather variable species. The large flower and fruit size, markedly dimorphic indumentum, and strongly tuberculate, ± glabrescent leaves are distinctive.
 - *Melaleuca lanceolata* WW- 206 This collection is of the inland variant of the species which has previously been referred to by the name *subsp thaeroides* but which is now considered synonymous with the typical coastal form. It does appear however to be morphologically as well as geographically distinct and it seems probable that it will at some point again be recognised as a separate taxon.
 - *Melaleuca lateriflora* subsp. WW-193 This is the second co-occurrence of the two subsp of *M. lateriflora* detected during Woodland Watch surveys. This has been brought to the attention of *Melaleuca* specialist Brendan Lepschi, who is now re-examining the taxonomic status of the two with a view to possibly raising subsp *acutifolia* to species level
 - *Melaleuca pauperiflora* subsp. WW- 211 As with *M. lateriflora* above, the presence of the two subspecies of *M. pauperiflora* at this site, with no indication of intergradation, suggests that these two taxa might be more appropriately recognised as separate species.
 - *Melaleuca* spp. WW- 210 The sympatric occurrence of 7 *Melaleuca* spp at this site is noteworthy.
 - *Plagiobothrys australasicus* WW- 202 This collection is rather anomalous in both its habit and habitat. Typically the species has a prostrate habit and occurs on granitic sites, whereas the plants at this locality are erect and growing in an area of primary salinity. Additionally the locality represents a major westerly disjunction for the species. Detailed taxonomic study is required to assess whether a second taxon is involved.
 - *Senna* spp. WW- 206 *Senna* sp. Pallinup River (J.W. Green 4847) PN – this is an informal name currently in use at the Western Australian Herbarium to refer to a presumably unnamed taxon from the taxonomically very difficult *S. artemisioides* complex. Its co-occurrence at this site with another member of that complex (i.e. *S. artemisioides* subsp *filifolia*), with no sign of intergradation, could well be of significance to any future taxonomic resolution of the group.
 - *Stenopetalum* WW- 212/216 These two vouchers represent only the third and fourth collections from the Western Australian

- sphaerocarpum*
- *Stylidium* aff. *caricifolium* WW- 209
 - *Synaphea spinulosa* subsp. *spinulosa* WW- 201

wheatbelt of this rarely collected species.

This is local variant of *S. caricifolium* which is under consideration for taxonomic recognition at the infraspecific level (Juliet Wege pers. comm.).

A distinct narrow leaved variant that is under consideration for taxonomic recognition (R. Butcher pers. com.).

Cumulative Findings

These collections add further value to the scientific significance of the Woodland Watch project.

Nine specimens of currently undescribed taxa were collected in 2007. This brings the total for the project (2000-2007) to 38 specimens of undescribed taxa. In addition, 19 new specimens of Declared Rare or Priority Flora were collected in 2007, representing new populations or range extensions for these species, bringing the total for the project to 79 specimens of Declared Rare and Priority taxa lodged at the Western Australian Herbarium. This represents a significant gain in knowledge for these taxa of conservation concern.



Red Morrel woodland [Photo: Richard McLellan/WWF-Australia]

Acknowledgements

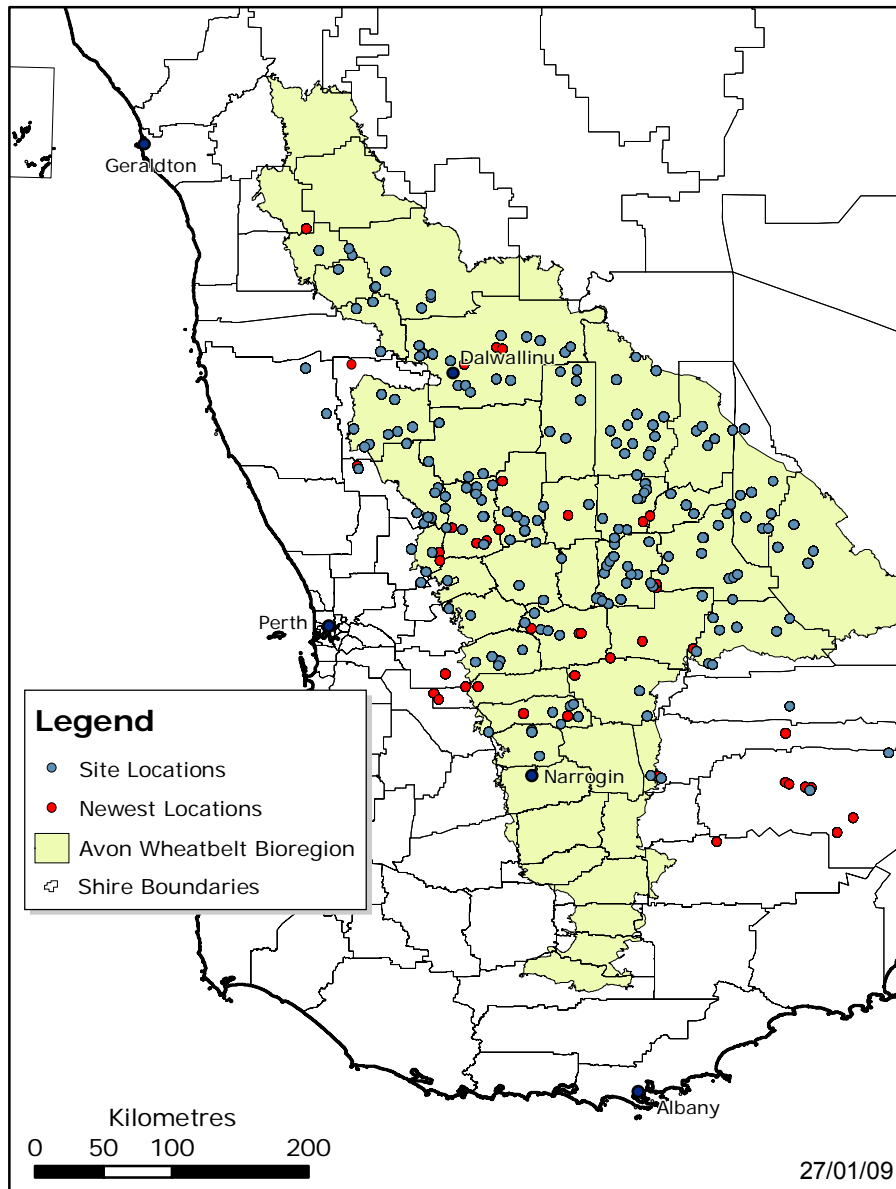
This document draws on information collected and provided by Mike Hislop, and was compiled and edited by Nicholas Lander. Document design follows that devised by Alex Chapman for earlier reports in this series. The map was prepared by Paul Gioia and the accompanying web site by Ben Richardson (see **References**). Photographs by Richard McLellan/WWF-Australia.

Thanks also go to Mathew Barrett, Andrew Brown, Malcolm French, Bruce Maslin and Paul Wilson for their specialist taxonomic advice. The WA Herbarium Database Team (supervisor Sue Carroll) provided much technical assistance.

References

- Beard, J.S. (1990). *Plant Life of Western Australia*. Kangaroo Press, Kenthurst.
- Hobbs, R.J. & Yates, C.J. (1999). *Temperate Woodlands in Australia*. Surrey Beatty & Sons, Chipping Norton.
- Maslin, B.R. (2001). WATTLE — *Acacias of Australia* CD-ROM and manual. Australian Biological Resources Study / Dept of Conservation & Land Management, WA.
- Trudgen, M.E. (1991) Vegetation Condition Scale. Modified by B.J. Keighery in Keighery, B.J. (1994) *Bush Land Plant Survey; a Guide to Plant Community Survey for the Community*. Wildflower Society of Western Australia (Inc) Nedlands, W.A 6009.
- Western Australian Herbarium (1998). *FloraBase — Information on the Western Australian flora*. Department of Conservation and Land Management. <http://florabase.dec.wa.gov.au/>
- Western Australian Herbarium (2002 onwards). *FloraBase — Woodland Watch*. Department of Conservation and Land Management. <http://florabase.dec.wa.gov.au/wwatch/>
- Western Australian Herbarium (2002). *Woodland Watch — 2000 and 2001 Survey of Wheatbelt Woodlands*. Department of Conservation and Land Management. Unpublished Report.
- WWF-Australia (2001 onwards). *South West Ecoregion Program — Woodland Watch* <http://wwf.org.au/ourwork/land/woodlandwatch>

Map of Survey Sites



Site Species Lists

For a current listing of all Woodland Watch survey sites, please refer to the Western Australian Herbarium's *FloraBase – Woodland Watch* web site at

<http://florabase.dec.wa.gov.au/wwatch/>

Key to Interpreting Species Lists

The numerical prefix represents the PERTH barcode number of each collection.

* Denotes exotic species.

Denotes those species collected outside the quadrat during the random stratified walk.

The first figure shown in the 'No. of Collections' field is for the quadrat only – the figure in brackets includes those collected during the random stratified walk.

Site: WW-187 **No. of Collections:** 11 (27)

Locality: E of Coorow.

Woodland type: *Eucalyptus salmonophloia* woodland.

WWF & DEC Survey Team: D. Aynsley, C. Curnow & M. Hislop.

07578822 # *Acacia erinacea*

07578660 *Atriplex semibaccata* – sometimes considered an introduction to WA though undoubtedly native to eastern Australia.

07578725 * *Brassica tournefortii*

07578911 # *Bulbine semibarbata*

07578830 *Calandrinia calyptrata*

07578873 *Crassula colorata* var. *acuminata*

07578814 # *Dodonaea inaequifolia*

07578709 *Enchylaena lanata*

07578881 # *Erodium cygnorum*

07578865 # *Erymophyllum tenellum*

07578792 # *Eucalyptus arachnaea* subsp. *arrecta* – Priority 3 taxon.

07578784 # *Eucalyptus loxophleba* subsp. *loxophleba*

07578601 *Eucalyptus salmonophloia*

- 07578679 # *Hydrocotyle pilifera* var. *glabrata*
- 07578695 # *Maireana brevifolia*
- 07578717 *Maireana marginata*
- 07578741 # *Melaleuca coronicarpa*
- 07578733 # *Papistylus grandiflorus* – Priority 2 taxon.
- 07578857 # *Plantago debilis* – the Australian members of this genus are much in need of taxonomic revision.
- 07578776 *Rhagodia preissii* – specimen somewhat intermediate between the typical subsp & subsp *obovata*.
- 07578571 # *Rhagodia* sp. Watheroo (R.J. Cranfield & P.J. Spencer 8183) PN – this is an informal name currently in use at the Western Australian Herbarium to refer to a taxon that is considered close to, but probably distinct from, *R. drummondii*.
- 07578849 # *Rhodanthe polycephala*
- 07578687 *Sclerolaena diacantha*
- 07578598 *Senna charlesiana*
- 07578768 * *Sisymbrium erysimoides*
- 07578903 # *Trachymene cyanopetala*
- 07578938 # *Trachymene ornata*

Site: WW-188 **No. of Collections:** 23 (27)

Locality: W of Wubin.

Woodland type: *Eucalyptus loxophleba* subsp. *loxophleba*, *E. wubinensis* woodland.

WWF & DEC Survey Team: D. Aynsley, C. Curnow & M. Hislop.

- 07682255 *Acacia andrewsii*
- 07682298 *Acacia enervia* subsp. *explicata*
- 07682174 *Acacia erinacea*
- 07682441 # *Arthropodium curvipes*

07682379 *Calandrinia calyptrata*
07682360 *Calotis hispidula*
07682425 # *Dodonaea inaequifolia*
07682239 *Enchylaena lanata*
07682212 *Eremophila deserti*
07682387 *Erodium cygnorum*
07682166 *Eucalyptus loxophleba* subsp. *loxophleba*
07682433 # *Eucalyptus wubinensis*
07682352 *Goodenia berardiana*
07682409 *Hyalosperma glutinosum* subsp. *glutinosum*
07682336 *Lawrencella rosea*
07682271 *Maireana carnosae*
07682247 *Maireana marginata*
07682301 *Melaleuca coronicarpa*
07682204 *Olearia muelleri*
07682395 *Parietaria cardiostegia*
07682190 *Rhagodia drummondii*
07682328 *Rhodanthe pygmaea*
07682182 *Santalum acuminatum*
07682417 # *Santalum spicatum*
07682220 *Sclerolaena diacantha*
07682263 *Thysanotus manglesianus*
07682344 *Trachymene cyanopetala*

Site: WW-189 **No. of Collections:** 8 (13)

Locality: SE of Latham.

Woodland type: *Eucalyptus salubris* woodland.

WWF & DEC Survey Team: D. Aynsley, C. Curnow & M. Hislop.

07642393 *Acacia andrewsii*

07642342 *Acacia erinacea*

07642334 *Acacia mackeyana*

07642415 # *Eremophila clarkei*

07642423 # *Eremophila decipiens* subsp. *decipiens*

07642326 *Eucalyptus salubris*

07642458 # *Hyalosperma glutinosum* subsp. *glutinosum*

07642377 *Maireana marginata*

07642431 # *Melaleuca pauperiflora* subsp. *fastigiata* – this collection together with another made at site 190 represent a northern range extension for this taxon.

07642385 *Olearia muelleri*

07642350 *Rhagodia* sp. Watheroo (R.J. Cranfield & P.J. Spencer 8183) PN – refer comment re this taxon at site 187.

07642369 *Sclerolaena diacantha*

07642407 # *Thysanotus manglesianus*

Site: WW-190 **No. of Collections:** 9 (19)

Locality: E of Latham.

Woodland type: *Eucalyptus salmonophloia*, *E. salubris* woodland.

WWF & DEC Survey Team: D. Aynsley, J. Borger & M. Hislop.

07718357 # *Acacia ancistrophylla* var. *ancistrophylla*

07718365 # *Acacia anthochaera*

07718330 # *Acacia erinacea*

07718276 *Acacia mackeyana*
07718284 *Calandrinia calyptrata*
07718381 # *Comesperma integerrimum*
07718292 *Daucus glochidiatus*
07718241 *Enchylaena lanata*
07718322 # *Eremophila oppositifolia* subsp. *angustifolia*
07718411 # *Eucalyptus celastroides* subsp. *virella*
07718217 *Eucalyptus salmonophloia*
07718225 *Eucalyptus salubris*
07718306 *Hyalosperma glutinosum* subsp. *glutinosum*
07718403 # *Maireana marginata*
07718349 # *Melaleuca lateriflora* subsp. *lateriflora*
07718233 *Melaleuca pauperiflora* subsp. *fastigiata* – this collection together with another made at site 189 represent a northern range extension for this taxon.
07718268 *Rhagodia* sp. Watheroo (R.J. Cranfield & P.J. Spencer 8183) PN – refer comment re this taxon at site 187.
07718314 # * *Spergula pentandra*
07718373 # *Thysanotus manglesianus*

Site: WW-191 **No. of Collections:** 16 (28)

Locality: S of Bindi Bindi.

Woodland type: *Eucalyptus salmonophloia* woodland.

WWF & DEC Survey Team: D. Aynsley, J. Borger & M. Hislop.

07623143 # *Acacia acuminata*

07683928 *Arthropodium dyeri*

07623100 # *Brachyscome perpusilla*

07683898 * *Brassica tournefortii*

07684029 # *Bulbine semibarbata*

07683987 *Calandrinia calyptrata*

07684002 *Calotis hispidula*

07683901 *Crassula colorata* – a mixed collection of the typical var and var *acuminata*.

07684010 *Crassula decumbens* var. *decumbens*

07683995 *Daucus glochidiatus*

07623135 # *Drosera macrantha* – the typical subspecies of *D. macrantha* is broadly circumscribed and probably comprises several taxa (A. Lowrie pers. comm.). This erect or weakly twining pink flowered variant was collected in full flower, unlike the more robust, climbing, white flowered variant, which is quite frequently encountered during WW surveys, and is usually seen in early fruit.

07683960 * *Ehrharta longiflora*

07683863 *Enchylaena lanata*

07623127 # *Erodium cygnorum*

07683855 *Eucalyptus salmonophloia*

07623070 # *Goodenia pusilliflora*

07623178 # *Hakea recurva* subsp. *recurva*

07623119 # *Hyalosperma glutinosum* subsp. *glutinosum*

07683979 *Lepidium rotundum*

07683952 *Maireana brevifolia*

07684258 *Maireana marginata*

07623097 # *Oxalis exilis* – *O. exilis* is a member of the difficult *O. corniculata* species complex, the Australian members of which are in need of taxonomic study. In the past, most WA wheatbelt collections from this group have been assigned the name *O. perennans* (including all previous WW specimens), it is now believed however that they better match *O. exilis*, to which they have been transferred pending further research on the subject.

07623089 # *Parietaria cardiostegia*

07683944 *Ptilotus divaricatus* var. *divaricatus*

07683936 *Rhagodia preissii* subsp. *preissii*

07623151 # *Scaevola spinescens*

07683871 *Sclerolaena diacantha*

07623062 # *Trachymene cyanopetala*

Site: WW-192 **No. of Collections:** 16 (25)

Locality: W of Bindi Bindi.

Woodland type: *Eucalyptus salmonophloia*, *E. wandoo* subsp. *pulverea* woodland.

WWF & DEC Survey Team: D. Aynsley, H. Mills & M. Hislop.

- 07642180 # *Acacia ericksoniae*
- 07642113 *Atriplex semibaccata*
- 07642261 *Calandrinia calyptrata*
- 07642229 *Calotis hispidula*
- 07642210 * *Cotula bipinnata*
- 07642237 *Crassula colorata* var. *acuminata*
- 07642164 # *Daviesia benthamii* subsp. *benthamii*
- 07642083 *Eucalyptus loxophleba* subsp. *loxophleba*
- 07642040 *Eucalyptus salmonophloia*
- 07642059 *Eucalyptus salmonophloia*
- 07642067 *Eucalyptus wandoo* subsp. *pulverea*
- 07642075 *Eucalyptus wandoo* subsp. *pulverea*
- 07642199 # *Hydrocotyle pilifera* var. *glabrata*
- 07642253 # *Hypoxis glabella* var. *glabella*
- 07642156 *Lepidium rotundum*
- 07642105 *Maireana brevifolia*
- 07642121 *Maireana marginata*
- 07642172 # *Pittosporum angustifolium*
- 07642148 *Ptilotus divaricatus* var. *divaricatus*
- 07642245 # *Ptilotus holosericeus*

07642202 # *Ptilotus spathulatus* forma *spathulatus*

07642091 *Rhagodia preissii* subsp. *preissii*

07642288 *Rhodanthe polycephala*

07642296 # *Rhodanthe stricta* – species at the SW extremity of its range.

07642318 # *Triglochin* sp. B Flora of Australia (P.G. Wilson 4294) PN – this is an informal name currently in use at the Western Australian Herbarium to refer to a presumably unnamed taxon.

Site: WW-193 **No. of Collections:** 32 (41)

Locality: Outskirts of Moora.

Woodland type: *Eucalyptus salmonophloia*, *E. wandoo* subsp. *pulverea* woodland.

WWF & DEC Survey Team: D. Aynsley, H. Mills & M. Hislop.

07714599 *Acacia aestivalis*

07714688 *Acacia erinacea*

07714815 # *Acacia hemiteles*

07714564 *Acacia lineolata* subsp. *lineolata*

07714920 *Arthropodium dyeri*

07714947 *Blennospora drummondii*

07714963 *Bulbine semibarbata*

07714602 *Calandrinia calyptrata*

07714874 *Calotis hispidula*

07714858 *Crassula colorata* var. *acuminata*

07714955 *Daucus glochidiatus*

07714718 *Daviesia benthamii* subsp. *benthamii*

07714769 # *Enchylaena lanata*

07714831 # *Erodium cygnorum*

07714890 *Erymophyllum tenellum*

07714629 *Eucalyptus salmonophloia*

07714645 *Eucalyptus wandoo* subsp. *pulverea*

07714939 *Goodenia pusilliflora*

07714580 # * *Gorteria personata*

07714572 *Grevillea hakeoides* subsp. *hakeoides*

07714793 *Grevillea huegelii*

07714556 *Hakea commutata* – together with a one other specimen from the Moora area, this collection represents a northern outlier for the species.

07714912 *Hydrocotyle pilifera* var. *glabrata*

07714807 *Lomandra effusa*

07714777 *Maireana marginata*

07714661 # *Melaleuca adnata*

07714637 # *Melaleuca lateriflora* subsp. *acutifolia* – this is the second co-occurrence of the two subsp of *M. lateriflora* detected during Woodland Watch surveys. This has been brought to the attention of Melaleuca specialist Brendan Lepschi, who is now re-examining the taxonomic status of the two with a view to possibly raising subsp *acutifolia* to species level.

07714610 # *Melaleuca lateriflora* subsp. *lateriflora*

07714998 * *Monoculus monstrosus*

07714785 * *Oxalis pes-caprae*

07714904 *Plantago debilis*

07714726 *Rhagodia preissii* subsp. *preissii*

07714823 # *Rhodanthe manglesii*

07714971 *Rhodanthe polycephala*

07714696 # *Scaevola spinescens*

07714653 *Sclerolaena diacantha*

07714750 *Thysanotus manglesianus*

07714882 *Trachymene cyanopetala*

07714866 *Trachymene ornata*

07714734 *Trymalium daphnifolium*

07714742 *Wilsonia humilis*

Site: WW-194 **No. of Collections:** 9 (25)

Locality: S of Moora.

Woodland type: *Eucalyptus loxophleba* subsp. *loxophleba*, *E. wandoo* subsp. *pulverea* woodland.

WWF & DEC Survey Team: D. Aynsley, H. Mills & M. Hislop.

07624301 # *Baeckea crispiflora*

07623801 # *Blennospora drummondii*

07624131 # *Burchardia congesta* – this taxon has until recently known by the name *B. umbellata*.

07624174 # *Caesia* sp. Wongan (K.F. Kenneally 8820) PN – this is an informal name currently in use at the Western Australian Herbarium to refer to a presumably unnamed taxon. It has also been known by the manuscript name *C. alfordii*.

07624255 *Caladenia flava* subsp. *flava*

07623828 # *Chamaescilla versicolor*

07624247 *Dioscorea hastifolia*

07624220 *Drosera macrantha* subsp. *macrantha*

07624239 *Dryandra hewardiana*

07623763 # *Erodium cygnorum*

07624166 # *Eucalyptus drummondii*

07624182 *Eucalyptus loxophleba* subsp. *loxophleba*

07624190 *Eucalyptus wandoo* subsp. *pulverea*

07624204 *Gastrolobium spinosum*

07623798 # *Goodenia berardiana*

07624158 # *Hybanthus floribundus* subsp. *floribundus*

07624123 # *Lagenophora huegelii*

07624271 # *Lomandra micrantha* subsp. *micrantha*

07623844 # *Oxalis exilis* – refer note re this taxon at site 191.

07624298 # *Podolepis lessonii*
07623755 # *Pterostylis sargentii*
07624212 *Thysanotus manglesianus*
07623771 # *Trachymene cyanopetala*
07624263 * *Ursinia anthemoides*
07623836 # *Velleia cycnopotamica*

Site: WW-195 **No. of Collections:** 14 (25)

Locality: S of Moora.

Woodland type: *Eucalyptus loxophleba* subsp. *loxophleba*, *E. wandoo* subsp. *pulverea* woodland.

WWF & DEC Survey Team: D. Aynsley, H. Mills & M. Hislop.

07717962 *Acacia pulchella* var. *reflexa*

07718152 # *Allocasuarina campestris*

07718047 *Blennospora drummondii*

07718209 # *Burchardia congesta*

07718128 # *Caladenia dundasiae* – Priority 1 taxon. A restricted and rather poorly known orchid, currently represented by only 4 collections at the WA Herbarium.

07718063 *Caladenia flava* subsp. *flava*

07718055 *Chamaescilla versicolor*

07718012 *Drosera macrantha* subsp. *macrantha*

07717997 *Dryandra hewardiana*

07717938 *Eucalyptus loxophleba* subsp. *loxophleba*

07717946 *Eucalyptus wandoo* subsp. *pulverea*

07717954 *Eucalyptus wandoo* subsp. *pulverea*

07718098 # *Gonocarpus nodulosus*

07718136 # *Gyrostemon subnudus*

07718144 # *Gyrostemon subnudus*

07717989 *Hypocalymma angustifolium*

07718004 *Melaleuca aspalathoides* – a noteworthy local variant of what is, as currently recognised, a widespread and variable species. The large flower and fruit size, markedly dimorphic indumentum, and strongly tuberculate, ± glabrescent leaves are very distinctive.

07717970 *Melaleuca radula*

07718187 # *Opercularia vaginata*

07718160 # *Scaevola platyphylla*

07718101 # *Stylidium androsaceum* – until recently the name *S. calcaratum* had been misapplied to this species.

07718195 # *Stypandra glauca*

07718020 *Thysanotus manglesianus*

07718071 # *Thysanotus patersonii*

07718039 *Trachymene ornata*

07718179 # *Trymalium ledifolium* var. *rosmarinifolium*

Site: WW-196 **No. of Collections:** 13 (36)

Locality: E of Gillingarra.

Woodland type: *Eucalyptus salmonophloia*, *E. wandoo* subsp. *pulverea* woodland.

WWF & DEC Survey Team: D. Aynsley, H. Mills & M. Hislop.

07580304 # *Acacia lasiocarpa* var. *sedifolia*

07580215 *Acacia shuttleworthii*

07580126 *Blennospora drummondii*

07580231 # *Brachyscome glandulosa*

07580045 # *Brachyscome perpusilla*

07579942 *Calandrinia calyptrata*

07579950 # *Calotis hispidula*

07580258 # *Comesperma volubile*
07580096 # * *Cotula bipinnata*
07580002 # *Crassula colorata* var. *colorata*
07579977 # *Crassula decumbens* var. *decumbens*
07580312 # *Cryptandra intermedia*
07579985 # *Daucus glochidiatus*
07580177 *Daviesia benthamii* subsp. *benthamii*
07580274 * *Ehrharta longiflora*
07579969 # *Ericksonella saccharata*
07580134 *Erodium cygnorum*
07579993 # *Erymophyllum tenellum*
07580185 *Eucalyptus salmonophloia*
07580193 *Eucalyptus wandoo* subsp. *pulverea*
07580169 # *Gastrolobium trilobum*
07580142 *Goodenia berardiana*
07580266 *Helichrysum leucopsideum*
07580320 # *Hibbertia commutata*
07580223 # *Hydrocotyle rugulosa*
07580010 # *Hypoxis glabella* var. *glabella*
07580290 *Lagenophora huegelii* – at the N extremity of the species' range at this locality.
07580282 # *Lepidium rotundum*
07580207 *Maireana enchylaenoides* – this is the northernmost collection of the species in Western Australia.
07580150 # *Melaleuca coronicarpa*
07580088 # *Oxalis exilis* – refer note re this taxon at site 191.
07580053 # *Plantago debilis*
07580118 *Ptilotus drummondii*
07580037 # *Rhodanthe laevis*

07580029 # *Trachymene cyanopetala*

07580061 # *Triglochin* sp. B Flora of Australia (P.G. Wilson 4294) PN – refer note re this taxon at site 192.

Site: WW-197 **No. of Collections:** 34 (41)

Locality: NE of Toodyay.

Woodland type: *Eucalyptus wandoo* subsp. *wandoo* woodland. (Note: no fertile material of the dominant *Eucalypt* was obtainable from this recently burnt site)

WWF & DEC Survey Team: M.Griffiths & M. Hislop.

07753675 * *Anagallis arvensis* var. *caerulea*

07753683 *Blennospora drummondii*

07753624 *Bossiaea spinescens*

07753470 * *Briza maxima*

07753721 # *Burchardia congesta*

07753586 *Caladenia flava* subsp. *flava*

07753705 # *Caladenia pectinata*

07753713 # *Caladenia magniclavata* – this collection is the most northerly record of the species for WA. Together with another specimen collected from the Beverley-York road it appears to represent a disjunct northern population node.

07753640 *Calandrinia corrigioloides*

07753667 *Chamaescilla versicolor*

07753772 *Cyanicula gemmata*

07753489 *Desmocladus asper*

07753497 *Drosera macrantha* subsp. *macrantha*

07753500 *Erodium cygnorum*

07753403 *Glischrocaryon aureum* var. *aureum*

07753446 *Goodenia berardiana*

07753594 *Homalosciadium homalocarpum*

07753543 *Hyalosperma cotula*
07753845 # *Hyalosperma demissum*
07753632 * *Hypochaeris glabra*
07753780 * *Isolepis marginata*
07753837 # *Lagenophora huegelii*
07753519 *Lawrencella rosea*
07753535 *Lepidobolus preissianus*
07753802 *Levenhookia pusilla*
07753748 # *Lobelia rhombifolia*
07753462 *Neurachne alopecuroidea*
07753438 *Opercularia vaginata*
07753853 # *Phyllanthus calycinus*
07753411 *Podotheca angustifolia*
07753608 *Poranthera microphylla*
07753756 *Quinetia urvillei*
07753691 *Romulea rosea* var. *australis*
07753616 *Schoenus nanus*
07753527 *Schoenus subflavus*
07753799 *Siloxerus multiflorus*
07753578 *Sowerbaea laxiflora*
07753659 *Thysanotus patersonii*
07753764 *Trachymene cyanopetala*
07753551 *Trachymene pilosa*
07753454 * *Ursinia anthemoides*

Site: WW-198

No. of Collections: 22 (32)

Locality: N of Bolgart.

Woodland type: *Eucalyptus wandoo* subsp. *wandoo*, *E. astringens* subsp. *astringens* woodland.

WWF & DEC Survey Team: M. Griffiths & M. Hislop.

07724268 # *Acacia brumalis*

07724586 *Acacia lasiocarpa* var. *sedifolia*

07724284 *Allocasuarina campestris*

07724276 *Allocasuarina huegeliana*

07724330 *Borya sphaerocephala*

07724403 *Chamaescilla versicolor*

07724411 *Cheilanthes austrotenuifolia*

07724454 *Comesperma volubile*

07724578 *Dampiera lavandulacea*

07724527 # *Dodonaea divaricata*

07724314 *Drosera macrantha* subsp. *macrantha*

07724438 *Ericksonella saccharata*

07724551 # *Eucalyptus astringens* subsp. *astringens*

07724241 *Eucalyptus wandoo* subsp. *wandoo*

07724462 # *Gastrolobium parviflorum*

07724535 *Gastrolobium stowardii*

07724373 # *Glischrocaryon aureum* var. *aureum*

07724349 *Hakea chromatropa* – Priority 1 taxon. Appears to represent a new population of this recently described and probably very restricted species.

07724365 *Hakea lissocarpha*

07724292 # *Hakea petiolaris* subsp. *petiolaris*

07724500 # *Hemigenia incana*

07724470 *Hibbertia commutata*

07724357 *Lepidosperma* sp. – this specimen belongs to a taxon that was first described as *L. leptostachyum* var *asperatum* – a name that has not been used for many years. Russell Barrett plans to elevate it in the near future to species level under the name *L. asperatum* (R. Barrett pers. comm.).

07724322 *Lomandra effusa*

07724446 *Neurachne alopecuroidea*

07724519 # *Persoonia coriacea*

07724489 *Polianthion wichurae* – a member of a recently described new genus in the family Rhamnaceae.

07724306 *Santalum acuminatum*

07724543 *Stylidium cilium*

07724594 # *Stypandra glauca*

07724381 *Trachymene ornata*

07724497 # *Trymalium urceolare*

Site: WW- 199 **No. of Collections:** 15 (31)

Locality: S of Wongan Hills.

Woodland type: *Eucalyptus salmonophloia*, *E. salubris* woodland.

WWF & DEC Survey Team: M. Griffiths & M. Hislop.

07753934 # *Acacia acuaria*

07754159 # *Acacia aestivalis*

07754140 # *Acacia ericksoniae*

07753861 *Acacia erinacea*

07754124 # *Acacia orbifolia*

07753977 # *Bulbine semibarbata*

07754078 *Calandrinia calyptata*

07754043 *Comesperma integerrimum*

07754094 # *Crassula colorata* var. *acuminata*

07754108 # *Dodonaea bursariifolia*

07754116 # *Enchylaena lanata*
07753918 *Eremophila drummondii*
07754086 *Erymophyllum tenellum*
07753829 *Eucalyptus salmonophloia*
07753810 *Eucalyptus salubris*
07753969 # *Gastrolobium parviflorum*
07753896 *Grevillea huegelii*
07753985 # *Hydrocotyle pilifera* var. *glabrata*
07754051 *Lepidium rotundum*
07754175 *Lomandra effusa*
07754132 # *Maireana carnosa*
07754035 *Maireana marginata*
07753926 *Melaleuca coronicarpa*
07753888 *Olearia muelleri*
07754000 # *Parietaria cardiostegia*
07753950 # *Rhagodia preissii* subsp. *preissii*
07754019 *Santalum acuminatum*
07754027 *Santalum acuminatum*
07753993 # *Trachymene cyanopetala*
07754167 # *Trachymene ornata*
07753942 # *Trymalium daphnifolium*

Site: WW- 200 **No. of Collections:** 40 (46)

Locality: SE of Wongan Hills.

Vegetation type: *Allocasuarina huegeliana*, *Calycopeplus paucifolius* scrub.

WWF & DEC Survey Team: M. Griffiths & M. Hislop.

07695233 *Acacia acuminata*
07695322 *Acacia pulchella* var. *goadbyi*
07695527 * *Aira cupaniana*
07695225 *Allocasuarina huegeliana*
07695411 * *Arctotheca calendula*
07695276 *Baeckea crispiflora*
07695519 *Blennospora drummondii*
07695357 *Borya sphaerocephala*
07695489 *Brachyscome pusilla* – belongs to the difficult *B. iberidifolia* complex, currently under taxonomic revision by Phillip Short. The name is applied rather tentatively here.
07695187 *Caesia micrantha*
07695616 # *Calycopeplus paucifolius*
07695349 *Calytrix depressa*
07695314 *Calytrix leschenaultii*
07695217 *Chthonocephalus pseudevax*
07695241 *Comesperma scoparium*
07695497 *Crassula colorata* var. *colorata*
07695403 *Crassula extrorsa*
07695152 *Dianella revoluta*
07695373 *Drosera macrantha* subsp. *macrantha*
07695632 # * *Freesia alba* x *leichtlinii*
07695640 # * *Freesia alba* x *leichtlinii*
07695470 *Gonocarpus nodulosus*
07695586 *Goodenia berardiana*
07695284 *Hakea petiolaris* subsp. *trichophylla*
07695608 # *Hemigenia sericea*
07695454 *Hyalosperma demissum*

07695462 *Hydrocotyle pilifera* var. *glabrata*
07695438 * *Hypochaeris glabra*
07695381 *Lepidosperma* sp. – probably an undescribed taxon (R. Barrett pers. comm.).
07695330 *Leptospermum erubescens*
07695624 # *Leptospermum roei*
07695292 *Leucopogon planifolius*
07695268 *Microcorys eremophiloides* – Declared Rare Flora.
07695160 *Neurachne alopecuroidea*
07695179 *Opercularia vaginata*
07695195 *Podolepis canescens*
07695209 *Podolepis lessonii*
07695306 *Podotheca gnaphalioides*
07695500 *Poranthera microphylla*
07695594 # *Prasophyllum gracile*
07695543 *Quinetia urvillei*
07695365 *Santalum spicatum*
07695446 *Schoenus nanus*
07695535 *Siloxerus multiflorus*
07695578 *Velleia cycnopotamica*
07695551 *Wahlenbergia gracilentia*

Site: WW- 201 **No. of Collections:** 34 (61)

Locality: W of Goomalling.

Woodland type: *Banksia prionotes* low woodland.

WWF & DEC Survey Team: M. Griffiths & M. Hislop.

07726880 # *Acacia blakelyi* – this species is at the S edge of its distribution at this locality.

07727135 # *Acacia multispicata*

07727119 # *Actinostrobilus arenarius*

07776179 *Adenanthos cygnorum* subsp. *cygnorum*

07776195 *Adenanthos drummondii*

07726953 # *Amphipogon turbinatus*

07727062 # *Anigozanthos humilis* subsp. *humilis*

07776292 *Austrostipa elegantissima*

07776144 *Baeckea crispiflora*

07776128 *Banksia prionotes*

07726767 *Blennospora drummondii*

07727097 # *Boronia coerulescens* subsp. *spinescens*

07727011 # *Borya sphaerocephala*

07726805 *Brachyscome iberidifolia*

07776314 * *Briza maxima*

07727054 # *Caladenia flava* subsp. *flava*

07726821 # *Calandrinia corrigioloides*

07726937 # *Calytrix leschenaultii*

07726996 # *Cassythia aurea* var. *hirta*

07726732 *Ceratogyne obionoides*

07727070 # *Comesperma scoparium*

07776160 *Cryptandra pungens*

07776276 *Dampiera lavandulacea*

07726961 # *Daviesia nudiflora* subsp. *drummondii*

07726945 # *Desmocladus myriocladus*

07726856 # *Drosera humilis* – represents a southern range extension for this species.

07776241 *Drosera macrantha* subsp. *macrantha*

07726740 *Elythranthera brunonis*

07727100 # *Eremaea pauciflora* var. *pauciflora*

07726864 # *Grevillea incurva* – a geographically restricted species that probably warrants inclusion on the Priority list.

07776284 *Hakea incrassata*

07726902 # *Hibbertia huegelii*

07726899 # *Hibbertia stellaris* – this collection is atypical for the species in having shorter than normal leaves and peduncles, and in its occurrence on a dry rather than winter wet habitat.

07726724 *Hyalosperma demissum*

07726716 *Hydrocotyle callicarpa*

07727038 # *Jacksonia acicularis* – represents a southern range extension for this species.

07776268 *Jacksonia condensata*

07726848 # *Jacksonia rubra* – Priority 2 taxon.

07727089 # *Lawrencella rosea*

07727003 *Laxmannia grandiflora* subsp. *grandiflora*

07726929 # *Lepidobolus densus* – Priority 3 taxon. An unusual co-occurrence of these two *Lepidobolus* spp at this site.

07776225 *Lepidobolus preissianus* subsp. *preissianus*

07727127 # *Leptospermum erubescens*

07776217 *Mesomelaena preissii*

07776152 *Mirbelia trichocalyx*

07776233 *Neurachne alopecuroidea*

07726759 *Opercularia vaginata*

07776209 *Podolepis canescens*

07727046 # *Podotheca gnaphalioides*

07776306 *Poranthera microphylla*

07726813 *Pterostylis sargentii*

07726791 *Schoenus clandestinus*

07726988 *Schoenus nanus*

07726775 *Schoenus subflavus*

07726872 # *Synaphea spinulosa* subsp. *spinulosa* – a distinct narrow leaved variant that is under consideration for taxonomic recognition (R. Butcher pers. com.).

07726694 *Thysanotus patersonii*

07726783 *Trachymene cyanopetala*

07776187 * *Ursinia anthemoides*

07726910 # *Verticordia chrysantha*

07776136 *Verticordia picta*

07726708 * *Vulpia muralis*

Site: WW- 202 **No. of Collections:** 30 (41)

Locality: SE of Goomalling.

Woodland type: *Casuarina obesa* woodland.

WWF & DEC Survey Team: M. Griffiths & M. Hislop.

07690606 * *Aira cupaniana*

07690657 *Brachyscome perpusilla*

07690789 *Brachyscome pusilla* – refer note after this species at site 200.

07690797 *Bulbine semibarbata*

07690703 *Calandrinia calyptata*

07690819 *Calandrinia eremaea*

07690770 *Calandrinia granulifera*

07690800 *Calandrinia* sp. Blackberry (D.M. Porter 171) PN – this is an informal name currently in use at the Western Australian Herbarium to refer to a presumably unnamed taxon.

07690495 *Casuarina obesa*

07690665 * *Cotula bipinnata*

07690673 *Cotula cotuloides*

07690878 # *Crassula decumbens* var. *decumbens*

07690762 *Crassula exserta*

07690894 # *Didymanthus roei*

07690932 # *Enchylaena lanata*

07690622 *Erymophyllum tenellum*

07690614 *Gilberta tenuifolia*

07690924 # *Grevillea hakeoides* subsp. *hakeoides*

07690509 *Hakea preissii*

07690568 * *Hordeum glaucum*

07690649 *Hyalochlamys globifera*

07690746 *Hydrocotyle diantha*

07690584 *Hydrocotyle pilifera* var. *glabrata*

07690681 * *Hypochaeris glabra*

07690827 # *Lawrencella rosea*

07690533 * *Monoculus monstrosus*

07690592 *Parietaria cardiostegia*

07690835 # *Plagiobothrys australasicus* – represents a major western disjunction for the species at this locality. Furthermore the collection is anomalous in having an erect rather than the usual prostrate habit and in its occurrence at a primary saline, rather than granitic site.

07690541 *Podolepis capillaris*

07690576 *Rhagodia drummondii*

07690630 *Senecio glossanthus*

07690525 * *Sonchus oleraceus*

07690908 # *Tecticornia indica* subsp. *bidens* – all spp previously included in the genera *Halosarcia* and *Sclerostegia* have recently been transferred to *Tecticornia*.

07690517 *Tecticornia lepidosperma*

07690916 # *Tecticornia tenuis*

07690851 # *Trachymene ornata*

07690843 # *Triglochin calcitrapa*

07690886 # *Triglochin mucronata*
07690754 *Triglochin stowardii* – Priority 3 taxon.
07690738 * *Vulpia bromoides*
07690711 * *Vulpia myuros* var. *myuros*

Site: WW- 203 **No. of Collections:** 29 (45)

Locality: W of Quairading.

Woodland type: *Eucalyptus salmonophloia*, *E. wandoo* subsp. *wandoo* woodland.

WWF & DEC Survey Team: M. Griffiths & M. Hislop.

07725620 *Actinobole uliginosum*

07725833 *Blennospora drummondii*

07725965 # *Borya sphaerocephala*

07725582 *Bossiaea spinescens*

07725876 *Brachyscome perpusilla*

07725663 # *Caladenia cairnsiana* – the main distribution of this species is well to the south of this locality. There are only two other specimens at the Western Australian Herbarium that have been collected this far north.

07725957 # *Caladenia falcata*

07725884 *Caladenia flava* subsp. *flava*

07725655 *Caladenia roei*

07726031 # *Calytrix breviseta* subsp. *stipulosa*

07725841 *Ceratogyne obionoides*

07725892 *Chamaescilla versicolor*

07725604 *Conostylis pusilla*

07725779 *Desmocladius asper*

07726007 # *Dodonaea bursariifolia*

07725744 *Drosera macrantha* subsp. *macrantha*

07725558 *Eucalyptus salmonophloia*
07725566 *Eucalyptus salmonophloia*
07725574 *Eucalyptus wandoo* subsp. *wandoo*
07725981 # *Gastrolobium trilobum*
07725612 *Goodenia berardiana*
07726023 # *Goodenia convexa*
07725973 # *Halgania cyanea* var. *cyanea* ms – a particularly variable taxon as currently accepted.
07725795 *Helichrysum leucopsideum*
07725922 # *Hibbertia rupicola*
07725647 *Hyalosperma demissum*
07725914 *Lagenophora huegelii*
07725930 # *Laxmannia grandiflora* subsp. *grandiflora*
07725787 *Lepidobolus preissianus* subsp. *preissianus* ms
07725817 *Lepidosperma* sp. – probably an undescribed taxon (R. Barrett pers. comm.).
07725949 # *Lomandra effusa*
07725736 # *Millotia tenuifolia* var. *tenuifolia*
07725868 *Neurachne alopecuroidea*
07725809 *Opercularia vaginata*
07726058 *Platysace cirrosa*
07725760 # *Podolepis capillaris*
07725701 *Podolepis lessonii*
07725590 *Pterostylis sanguinea*
07725906 *Schoenus clandestinus*
07725639 *Siloxerus multiflorus*
07725671 # *Sowerbaea laxiflora*
07726015 # *Stackhousia monogyna*
07725752 *Thysanotus patersonii*

07725698 # *Trachymene cyanopetala*

07725728 # *Trachymene ornata*

07725825 * *Ursinia anthemoides*

Site: WW- 204 **No. of Collections:** 17 (45)

Locality: S of Trayning.

Woodland type: *Eucalyptus salicola*, *E. salubris* woodland.

WWF & DEC Survey Team: M. Griffiths & M. Hislop.

07726228 *Acacia colletioides*

07726589 # *Acacia enervia* subsp. *enervia*

07726449 # *Actinobole uliginosum*

07726295 *Austrostipa elegantissima*

07726686 # *Austrostipa nitida*

07726465 # *Blennospora phlegmatocarpa* – Priority 3 taxon.

07726384 # *Brachyscome ciliaris*

07726414 # *Brachyscome perpusilla*

07726473 # *Brachyscome pusilla* – refer note after this species at site 200.

07726287 * *Brassica tournefortii*

07726341 * *Bromus rubens*

07726325 *Calandrinia eremaea*

07726503 # *Calandrinia granulifera*

07726457 # *Chthonocephalus pseudevax*

07726333 * *Cleretum papulosum* subsp. *papulosum*

07726422 # *Crassula colorata* var. *acuminata*

07726430 # *Crassula exserta*

07726244 *Enchylaena lanata*
07726392 # *Eragrostis dielsii*
07726643 # *Eremophila oppositifolia* subsp. *angustifolia*
07726198 *Eucalyptus salicola*
07726201 *Eucalyptus salubris*
07726554 # *Hyalosperma glutinosum* subsp. *glutinosum*
07726627 # *Lycium australe*
07726678 # *Maireana carnos*
07726597 # *Maireana georgei*
07726651 # *Maireana trichoptera*
07726570 # *Maireana triptera*
07726600 # *Melaleuca atroviridis*
07726260 *Melaleuca eleuterostachya*
07726619 # *Melaleuca lateriflora* subsp. *lateriflora*
07726368 *Millotia myosotidifolia*
07726252 *Olearia dampieri* subsp. *eremicola* ms
07726317 * *Pentaschistis airoides*
07726538 # *Podolepis canescens*
07726279 *Podolepis capillaris*
07726309 *Podotheca gnaphalioides*
07726406 # *Ptilotus gaudichaudii* var. *parviflorus*
07726236 *Rhagodia drummondii*
07726635 # *Schoenia cassiniana*
07726376 *Senecio glossanthus*
07726562 # *Templetonia smithiana*
07726511 # *Thysanotus speckii*
07726546 # *Trachymene cyanopetala*

07726481 # *Velleia cynopotamica*

Site: WW- 205 **No. of Collections:** 39 (46)

Location: SE of Doodlakine.

Woodland type: *Eucalyptus loxophleba* subsp. *loxophleba* woodland

WWF & DEC Survey Team: M. Griffiths & M. Hislop.

07752938 *Abutilon cryptopetalum*

07752741 *Acacia acuminata*

07753179 # *Acacia lasiocalyx*

07753292 # *Allocasuarina huegeliana*

07753071 *Arthropodium curvipes*

07752857 * *Avena barbata*

07753217 *Brachyscome iberidifolia*

07752849 * *Brassica tournefortii*

07752962 * *Bromus rubens*

07753136 *Calandrinia eremaea*

07752989 *Calotis hispidula*

07753063 *Chthonocephalus pseudevax*

07752903 * *Cleretum papulosum* subsp. *papulosum*

07753284 *Crassula colorata* var. *acuminata*

07752792 * *Ehrharta longiflora*

07752768 *Enchylaena lanata*

07753144 # * *Erodium botrys*

07753039 *Erodium cygnorum*

07752776 *Eucalyptus loxophleba* subsp. *loxophleba*

07752970 *Goodenia berardiana*
07753152 # *Hakea recurva* subsp. *recurva*
07753101 *Hyalosperma glutinosum* subsp. *glutinosum*
07753187 * *Hypochaeris glabra*
07752997 *Isoetopsis graminifolia*
07752954 *Lawrencella rosea*
07753209 *Millotia myosotidifolia*
07752830 * *Monoculus monstrosus*
07753160 # *Nicotiana rotundifolia*
07752873 * *Pentaschistis airoides*
07753306 # *Phyllangium sulcatum*
07752946 *Podolepis lessonii*
07752784 *Podotheca gnaphalioides*
07753004 *Ptilotus gaudichaudii* var. *parviflorus*
07753012 *Ptilotus spathulatus* forma *spathulatus*
07753098 *Rhodanthe manglesii*
07753020 *Rhodanthe pygmaea*
07752806 *Schoenia cassiniana*
07753195 *Schoenus nanus*
07752911 *Sida calyxhymeria*
07752881 *Thysanotus tenuis* – Priority 3 taxon.
07752822 * *Ursinia anthemoides*
07753047 *Velleia cycnopotamica*
07753381 # *Vittadinia gracilis*
07753128 * *Vulpia muralis*
07752814 *Waitzia acuminata* var. *acuminata*
07752865 * *Zaluzianskya divaricata*

Site: WW- 206 **No. of Collections:** 19 (35)

Locality: S of Bruce Rock.

Woodland type: *Eucalyptus longicornis*, *E. myriadena* woodland.

WWF & DEC Survey Team: H. Mills & M. Hislop.

07691238 *Acacia merrallii*

07691483 # *Asteridea athrixoides*

07691556 # *Austrostipa nitida*

07691300 * *Brassica tournefortii*

07691386 *Calandrinia calyptrata*

07691351 *Calotis hispidula*

07691491 # *Chenopodium desertorum* subsp. *microphyllum* – a seldom collected species generally, and with only a handful of specimens from the Avon wheatbelt.

07691378 * *Cleretum papulosum* subsp. *papulosum*

07691327 *Crassula colorata* var. *colorata*

07691475 # *Daucus glochidiatus*

07691270 *Enchylaena lanata*

07691505 # *Eriochiton sclerolaenoides*

07691203 *Eucalyptus longicornis*

07691211 *Eucalyptus myriadena* subsp. *myriadena*

07691513 # *Lepidium rotundum*

07691297 *Maireana marginata*

07691440 # * *Medicago minima*

07691548 # *Melaleuca lanceolata* – this is the inland form of the species which has in the past been recognised as distinct (= subsp. *thaeoides*), but which has recently been recombined pending further studies into the complex.

07691459 # *Millotia myosotidifolia*

07691521 # *Parietaria cardiostegia*

07691408 *Phlegmatospermum drummondii* – Priority 3 taxon.

07691424 # *Phlegmatospermum eremaeum* – Priority 2 taxon. This locality represents a substantial westerly range extension for the species. It is also noteworthy that two rather uncommon members of this small genus are sympatric here.

07691262 *Ptilotus holosericeus*

07691246 *Rhagodia drummondii*

07691467 # *Rhodanthe pygmaea*

07691254 *Sclerolaena diacantha*

07691394 *Senecio glossanthus*

07691564 # *Senna artemisioides* subsp. *filifolia*

07691572 # *Senna* sp. Pallinup River (J.W. Green 4847) PN – this is an informal name currently in use at the Western Australian Herbarium to refer to a presumably unnamed taxon from the taxonomically very difficult *S. artemisioides* complex. Its co-occurrence at this site with another member of that complex (i.e. *S. artemisioides* subsp. *filifolia*), with no sign of intergradation, could well be of significance to any future taxonomic resolution of the group.

07691319 * *Sisymbrium orientale*

07691432 # *Thysanotus patersonii*

07691416 # *Thysanotus tenuis* – Priority 3 taxon.

07691335 *Waitzia acuminata* var. *acuminata*

07691343 *Waitzia nitida*

07691289 *Zygophyllum ovatum*

Site: WW- 207 **No. of Collections:** 12 (20)

Locality: SW of Bruce Rock.

Woodland type: *Eucalyptus salubris* woodland.

WWF & DEC Survey Team: H. Mills & M. Hislop.

07691149 # *Acacia erinacea*

07691017 *Acacia intricata*

07691181 # *Asteridea athrixioides*
07691076 *Bulbine semibarbata*
07691068 *Calandrinia calyptrata*
07691173 # *Calotis hispidula*
07691033 *Crassula colorata* var. *acuminata*
07691114 # *Daucus glochidiatus*
07691106 *Erymophyllum tenellum*
07691157 # *Eucalyptus myriadena* subsp. *myriadena*
07690991 *Eucalyptus salmonophloia*
07690983 *Eucalyptus salubris*
07691130 # * *Lolium perenne* x *rigidum*
07691025 *Maireana marginata*
07691009 *Microcybe multiflora* subsp. *multiflora*
07691165 # *Podolepis tepperi*
07691084 *Ptilotus holosericeus*
07691041 *Rhodanthe pygmaea*
07691122 # *Trachymene cyanopetala*
07691092 * *Vulpia bromoides*

Site: WW- 208 **No. of Collections:** 11 (31)

Locality: SE of Quairading.

Woodland type: *Eucalyptus salmonophloia*, *E. longicornis* woodland. (Note: no fertile material of *E. salmonophloia* was obtainable from this site)

WWF & DEC Survey Team: H. Mills & M. Hislop.

07725000 # *Acacia erinacea*

07725019 # *Austrodanthonia caespitosa*

07724977 # *Austrostipa variabilis*

07724683 * *Brassica tournefortii*

07724748 * *Bromus rubens*

07724926 # *Bulbine semibarbata*

07724993 # *Calandrinia calyptata*

07724985 # *Calotis hispidula*

07724721 *Chenopodium desertorum* subsp. *microphyllum* – refer note re this taxon at site 206.

07725035 # *Crassula colligata* subsp. *lamprosperma* – collection is a significant north-westerly range extension for this taxon.

07724969 # *Crassula colorata* – mixed collection of the typical var & var *acuminata*.

07724764 # *Crassula decumbens* var. *decumbens*

07724659 *Eucalyptus longicornis*

07724667 *Eucalyptus loxophleba* subsp. *loxophleba*

07725027 # *Lepidium rotundum*

07724756 *Maireana enchylaenoides*

07725043 # *Melaleuca acuminata* – specimen intermediate between the 2 subspecies.

07724934 # *Oxalis exilis* – refer note re this taxon at site 191.

07724780 # *Podolepis tepperi*

07724713 *Ptilotus holosericeus*

07724896 # *Rhodanthe laevis*

07724942 # *Rhodanthe polycephala*

07724918 # * *Rostraria cristata*

07724705 * *Schismus barbatus*

07724691 * *Sisymbrium orientale*

07724888 # *Spergularia* sp. 3 Bullfinch (R.A. Saffrey 905) PN – this is an informal name currently in use at the Western Australian Herbarium to refer to a presumably unnamed taxon.

07725051 # *Stenopetalum lineare* subsp. *lineare*

07724675 *Templetonia sulcata*

07724950 # *Teucrium sessiliflorum*

07724772 # *Trachymene cyanopetala*

Site: WW- 209 **No. of Collections:** 32 (48)

Locality: W of Corrigin.

Vegetation type: *Eucalyptus macrocarpa* subsp. *macrocarpa* shrub mallee.

WWF & DEC Survey Team: H. Mills & M. Hislop.

07755554 *Acacia baxteri* – this species has a notably disjunct distribution with two northern and one southern population nodes. This collection however represents a significant range extension to the south-east of the more southerly of the two northern nodes.

07755635 # *Acacia lasiocalyx*

07755562 *Acacia stenoptera*

07755643 # *Acacia tratmaniana*

07694687 *Baeckea preissiana*

07755163 *Beaufortia interstans*

07694725 *Blennospora drummondii*

07755422 *Calytrix breviseta* subsp. *stipulosa*

07755511 *Cassytha pomiformis*

07694776 *Ceratogyne obionoides*

07694814 # *Chloanthes coccinea*

07694806 *Crassula closiana*

07755597 *Dampiera juncea* – the corolla hair colour is atypically pale in this collection.

07694695 *Drosera macrantha* subsp. *macrantha*

07694709 *Drosera* sp. – an interesting collection of a pygmy drosera that appears closest to *D. parvula*. It differs however in its more robust habit, very glandular scapes, and in the detail of the stipule character. Further study is needed to evaluate the significance of these differences but it seems quite possible that this is a currently unrecognised taxon.

07755430 *Dryandra vestita*

07694652 *Eucalyptus macrocarpa* subsp. *macrocarpa*

07755155 *Gastrolobium spinosum*

07694857 # *Glischrocaryon aureum* var. *aureum*

07694822 # *Grevillea cagiana*

07755171 *Hibbertia exasperata*

07694830 # *Hibbertia polystachya*

07755619 *Hydrocotyle callicarpa*

07755651 # *Kunzea micromera*

07755546 *Laxmannia paleacea*

07694881 # *Leptospermum erubescens*

07694784 *Levenhookia pusilla*

07755198 *Melaleuca leptospermoides*

07694792 *Millotia tenuifolia* var. *tenuifolia*

07694660 *Neurachne alopecuroidea*

07694865 # *Pityrodia terminalis*

07694768 *Podotheca angustifolia*

07694903 # *Psammomoya choretroides*

07694741 *Pterochaeta paniculata*

07694733 *Rhodanthe laevis*

07755570 *Schoenus brevisetis* – an enormously variable species as currently accepted.

07755627 *Schoenus latitans* – collection represents a significant southern range extension for this cryptic species.

07755600 *Schoenus nanus*

07755589 *Schoenus* sp. smooth culms (K.R. Newbey 7823) PN – this is an informal name currently in use at the Western Australian Herbarium to refer to a presumably unnamed taxon which is closely related to *S. armeria*.

07694911 # *Stackhousia monogyna*

07755686 # *Stylidium* aff. *caricifolium* – this is local variant of *S. caricifolium* which is under consideration for taxonomic recognition at the infraspecific level (Juliet Wege pers. comm.).

07755678 # *Stylidium zeicolor*

07694717 *Trachymene cyanopetala*

07694679 *Verticordia chrysantha*

07694873 # *Verticordia grandiflora*

07694849 # *Verticordia picta*

07755538 *Wahlenbergia preissii*

Site: WW- 210 **No. of Collections:** 19 (27)

Locality: S of Hyden.

Woodland type: *Eucalyptus salubris*, *E. calycogona* subsp. *calycogona* woodland.

WWF & DEC Survey Team: H. Mills & M. Hislop.

07754299 # *Acacia errabunda* – Priority 3 taxon. The locality represents a significant northerly range extension for the species.

07754256 *Acacia intricata*

07754248 *Acrotriche lancifolia*

07754213 # * *Avellinia michelii*

07753276 # *Callitris canescens*

07754183 # *Cassytha melantha*

07754272 *Cotula bipinnata*

07754280 *Crassula decumbens* var. *decumbens*

07754337 *Crassula exserta*

07753349 *Daviesia benthamii* subsp. *acanthoclona*

07754329 *Eremophila drummondii*

07753241 *Eucalyptus calycogona* subsp. *calycogona*

07754191 # *Eucalyptus phaenophylla*

07753268 *Eucalyptus salubris*

07753233 *Eucalyptus sporadica*

07753225 *Eucalyptus urna*

07753322 *Exocarpos aphyllus*

07754310 # *Hakea horrida*
07754264 *Melaleuca acuminata* subsp. *acuminata*
07753357 *Melaleuca adnata*
07754221 *Melaleuca condylosa*
07753365 *Melaleuca coronicarpa*
07754205 # *Melaleuca eurystoma*
07754302 # *Melaleuca haplantha*
07753373 *Melaleuca scalena*
07753314 *Olearia muelleri*
07753330 *Olearia muelleri*

Site: WW- 211 **No. of Collections:** 8 (20)

Locality: NW of Newdegate.

Woodland type: *Eucalyptus longicornis*, *E. salubris* woodland.

WWF & DEC Survey Team: H. Mills & M. Hislop.

07695004 *Calandrinia calyptrata*
07695136 # *Chenopodium desertorum* subsp. *microphyllum* – refer note re this taxon at site 206.
07694997 *Enchylaena lanata*
07695012 # *Erymophyllum tenellum*
07695047 # *Eucalyptus calycogona* subsp. *calycogona*
07694938 *Eucalyptus longicornis*
07695101 # *Eucalyptus myriadena* subsp. *myriadena*
07694946 *Eucalyptus salubris*
07695098 # *Exocarpos aphyllus*
07695128 # *Maireana erioclada*

07694989 *Maireana marginata*

07695055 # *Melaleuca acuminata* subsp. *acuminata*

07695144 # *Melaleuca adnata*

07695071 # *Melaleuca lateriflora* subsp. *lateriflora*

07695063 # *Melaleuca pauperiflora* subsp. *fastigiata*

07694954 *Melaleuca pauperiflora* subsp. *pauperiflora* – the presence of the two subspecies of *M. pauperiflora* at this site with no indication of intergradation suggests that the two might be more appropriately recognised as separate species.

07695039 # *Olearia muelleri*

07695020 # *Pogonolepis muelleriana*

07694970 *Rhagodia drummondii*

07694962 *Sclerolaena diacantha*

Site: WW- 212 **No. of Collections:** 16 (30)

Locality: N of Newdegate.

Woodland type: *Eucalyptus kondininensis*, *E. mimica* subsp. *mimica* woodland.

WWF & DEC Survey Team: H. Mills & M. Hislop.

07756062 # *Austrodanthonia acerosa*

07755821 *Austrostipa exilis*

07755848 *Bossiaea halophila*

07756011 # *Brachyscome pusilla* – refer note after this species at site 200.

07755910 # *Caladenia douchiae*

07755872 *Calandrinia eremaea*

07755945 # *Chamelaucium ciliatum* – enormously variable and best regarded as a species complex rather than a single taxonomic entity.

07755864 *Crassula exserta*

07755961 # *Disphyma crassifolium* subsp. *clavellatum*

07755988 # *Dodonaea stenozyga*

07756003 # *Dodonaea viscosa* subsp. *spatulata* – the taxonomy of *D. viscosa* and its component subspecies is complex. The distinction between subsp *angustissima* and subsp *spatulata* is not always clear.

07755813 *Enchylaena lanata*

07755694 *Eucalyptus kondininensis*

07755856 *Eucalyptus mimica* subsp. *mimica* – Priority 3 taxon.

07755775 *Gahnia ancistrophylla*

07755880 *Helichrysum leucopsideum*

07755929 # *Hydrocotyle rugulosa*

07756550 *Lomandra effusa*

07755805 *Melaleuca atroviridis*

07755953 # *Melaleuca brophyi*

07755791 *Melaleuca lateriflora* subsp. *lateriflora*

07756038 # *Phlegmatospermum drummondii* – Priority 3 taxon. Collection represents an easterly range extension for the species.

07756046 # *Podotheca gnaphalioides*

07756054 # *Rhagodia crassifolia*

07755783 *Rhagodia drummondii*

07755937 *Sarcozona praecox*

07755996 *Sclerolaena diacantha*

07755899 *Senecio glossanthus*

07755902 # *Stenopetalum sphaerocarpum* – there are only 2 other specimens from the WA wheatbelt of this rarely collected species at the Western Australian Herbarium.

07756070 # *Thysanotus patersonii*

Site: WW- 213 **No. of Collections:** 12 (29)

Locality: N of Newdegate.

Woodland type: *Eucalyptus pileata*, *E. phaenophylla* mallee woodland.

WWF & DEC Survey Team: H. Mills & M. Hislop.

07755449 # *Acacia intricata*

07755503 # *Andersonia* sp. Kulin (J.M. Powell 2588) PN – this is an informal name currently in use at the Western Australian Herbarium to refer to a presumably unnamed taxon which is closely related to *A. parvifolia*.

07755368 # *Astroloma recurvum* ms – Priority 3 taxon.

07755457 # *Bentleya spinescens* – Priority 4 taxon.

07754388 *Callitris canescens*

07754418 *Cassytha melantha*

07754477 # *Dodonaea bursariifolia*

07754361 *Eucalyptus grossa*

07754442 *Eucalyptus grossa* x – thought to be a hybrid involving *E. grossa* and possibly *E. tenera*.

07754345 *Eucalyptus phaenophylla*

07755414 *Eucalyptus pileata*

07754485 # *Eucalyptus tenera*

07755473 # *Gastrolobium melanocarpum*

07755341 # *Grevillea huegelii*

07755392 *Hakea commutata*

07755201 # *Hakea marginata*

07755376 # *Hibbertia psilocarpa*

07754493 # *Lepidosperma* sp. A2 Island Flat (G.J. Keighery 7000) PN – this is an informal name currently in use at the Western Australian Herbarium to refer to a presumably unnamed taxon related to *L. viscidum*.

07755481 # *Leptomeria preissiana*

07755465 # *Leucopogon fimbriatus*

07754353 *Melaleuca acuminata* subsp. *acuminata*

07754396 *Melaleuca adnata*

07755384 # *Melaleuca condylosa*

07754434 *Melaleuca coronicarpa*

07754426 *Melaleuca hamata*
07754469 # *Melaleuca pauperiflora* subsp. *pauperiflora*
07755406 *Microcybe multiflora* subsp. *baccharoides*
07754507 # *Neurachne alopecuroidea*
07754450 # *Phebalium filifolium*

Site: WW- 214 **No. of Collections:** 14 (33)

Locality: N of Newdegate.

Woodland type: *Eucalyptus myriadena* subsp. *myriadena*, *E. calycogona* subsp. *calycogona* woodland.

WWF & DEC Survey Team: H. Mills & M. Hislop.

07755317 # *Acacia deficiens*
07754930 *Acacia enervia* subsp. *explicata*
07754965 *Acacia erinacea*
07755325 *Austrodanthonia acerosa*
07754914 *Austrostipa elegantissima*
07755031 *Austrostipa variabilis*
07755090 # *Blennospora drummondii*
07755252 # *Boronia inornata* subsp. *leptophylla*
07755139 # *Brachyscome ciliaris* – represents the perennial variant of the species.
07754981 # *Brachyscome perpusilla*
07755082 # *Caladenia pulchra*
07755279 *Calandrinia calyptrata*
07754973 # *Crassula colorata* – mixed collection of var *colorata* and var *acuminata*.
07755333 # *Enchylaena lanata*
07755112 # *Enchylaena tomentosa* var. *tomentosa* – an unusual co-occurrence of the two closely related species of *Enchylaena* at this site.

07755287 # *Eremophila decipiens* subsp. *decipiens*
07754906 *Eucalyptus calycogona* subsp. *calycogona*
07754892 *Eucalyptus myriadena* subsp. *myriadena*
07755260 # *Eucalyptus neutra*
07755309 # *Eucalyptus sheathiana*
07755147 # *Eucalyptus tenera*
07755104 # *Pelargonium havlasae*
07755074 # *Podolepis tepperi*
07755015 # *Prasophyllum gracile*
07754922 *Pterostylis mutica*
07755007 # *Ptilotus holosericeus*
07754957 *Ptilotus spathulatus* forma *spathulatus*
07755058 *Rhodanthe laevis*
07755023 *Rhodanthe pygmaea*
07755066 *Senecio glossanthus*
07754949 *Trachymene cyanopetala*
07755120 # *Wahlenbergia gracilentia*
07755295 # *Westringia rigida*

Site: WW- 215 **No. of Collections:** 13 (34)

Locality: SE of Newdegate.

Woodland type: *Eucalyptus salmonophloia* woodland.

WWF & DEC Survey Team: H. Mills & M. Hislop.

07756399 # *Acacia viscifolia*

07756240 # *Actinobole uliginosum*

07756410 # *Austrodanthonia caespitosa*
07756178 *Austrostipa elegantissima*
07756143 *Austrostipa variabilis*
07756216 # * *Avellinia michelii*
07756259 # *Brachyscome pusilla* – refer note after this species at site 200.
07756283 *Calandrinia calyptrata*
07756208 *Calandrinia eremaea*
07756275 # *Calandrinia granulifera*
07756380 # *Callistemon phoeniceus*
07756186 *Crassula colorata* – mixed collection of var. *colorata* and var. *acuminata*.
07756267 # *Crassula decumbens* var. *decumbens*
07756224 # *Crassula exserta*
07756089 *Eucalyptus salmonophloia*
07756348 # *Exocarpos aphyllus*
07756321 # *Hakea commutata*
07756119 *Hakea newbeyana*
07756232 # *Helichrysum leucopsideum*
07756402 # *Lepidosperma* sp. – probably an undescribed taxon (R. Barrett pers. comm.).
07756313 # * *Lolium perenne* x *rigidum*
07756100 *Lomandra effusa*
07756097 *Melaleuca acuminata* subsp. *acuminata*
07756291 # *Melaleuca depauperata*
07756127 *Melaleuca lateriflora* subsp. *lateriflora*
07756305 # *Neurachne alopecuroidea*
07756151 *Olearia dampieri* subsp. *eremicola* ms
07756372 # * *Pentaschistis airoides*
07756135 *Rhagodia drummondii*

07756437 # *Rhagodia preissii* subsp. *preissii*
07756194 *Senecio glossanthus*
07756429 # *Vittadinia gracilis*
07756356 # * *Vulpia muralis*
07756364 # * *Vulpia myuros* var. *myuros*

Site: WW- 216 **No. of Collections:** 10 (37)

Locality: E of Harrismith.

Woodland type: *Eucalyptus longicornis*, *E. phenax* woodland.

WWF & DEC Survey Team: H. Mills & M. Hislop.

07754701 # *Acacia erinacea*
07755228 # *Actinobole uliginosum*
07754558 *Austrostipa exilis*
07754795 # *Brachyscome perpusilla*
07754779 # *Brachyscome pusilla* – refer note after this species at site 200.
07754639 *Calandrinia calyptrata*
07754647 # *Calandrinia granulifera*
07755236 # *Calotis hispidula*
07754868 *Crassula colorata* – mixed collection of var *colorata* and var *acuminata*..
07754833 # *Daucus glochidiatus*
07754574 # *Dodonaea viscosa* subsp. *spatulata* – refer comment re *D. viscosa* at site 212.
07754604 # *Eremophila lehmanniana*
07754515 *Eucalyptus longicornis*
07754582 # *Eucalyptus phenax*
07754590 # *Eucalyptus wandoo* subsp. *wandoo*

07754612 # *Grevillea huegelii*

07754744 # *Hydrocotyle pilifera* var. *glabrata*

07754655 # *Hydrocotyle rugulosa*

07754817 *Lepidium rotundum*

07754663 # *Lepidosperma* sp – probably an undescribed taxon (R. Barrett pers. comm.).

07754531 *Lomandra effusa*

07754523 *Melaleuca acuminata* subsp. *acuminata*

07754728 # *Millotia major*

07754841 # *Millotia tenuifolia* var. *tenuifolia*

07754698 # *Olearia dampieri* subsp. *eremicola* ms

07754760 # *Oxalis exilis* – refer note re this taxon at site 191.

07754671 # *Pimelea argentea*

07754809 # *Podolepis lessonii*

07754787 # *Podotrochea angustifolia*

07754876 *Rhodanthe polycephala*

07754752 # *Stenopetalum sphaerocarpum* – refer comment re this species at site 212. Only the fourth collection of this species from the WA wheatbelt.

07754825 # *Trachymene cyanopetala*

07754620 # *Triglochin* sp. B Flora of Australia (P.G. Wilson 4294) PN – refer note re this taxon at site 192.

07755244 * *Ursinia anthemoides*

07754884 * *Vulpia muralis*

07754566 # *Wahlenbergia gracilentia*

07754736 # * *Zaluzianskya divaricata*