

THE USE OF

NATIVE PERENNIAL GRASSES

ON FARMS IN THE WHEATBELT OF
WESTERN AUSTRALIA



A discussion paper for farmers (especially members of Landcare Groups), Community Landcare Coordinators, pasture researchers and others interested in sustainable farming systems in the wheatbelt of Western Australia.

The purpose of this paper is to raise awareness of and interest in native perennial grasses in the south-west of Western Australia, and to stimulate interest in the potential uses of these grasses on farms in the Western Australian wheatbelt.

A.R. (Roy) Butler

Photographs by
Craig White and Roy and Judith Butler

Acknowledgements

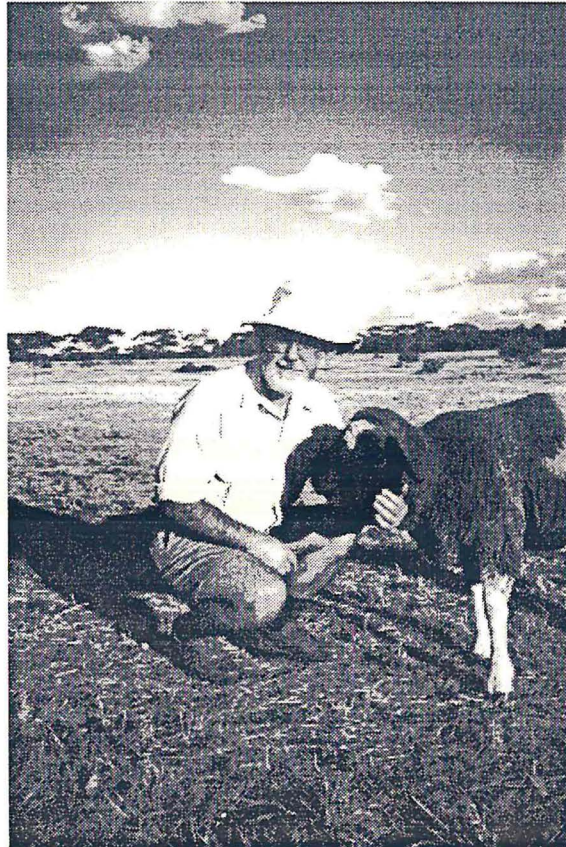
I have talked to many people about pastures and native perennial grasses and about farming systems that might do a better job of integrating livestock and cropping and improve farm sustainability. To the following people, my sincere thanks for your advice, contributions and encouragement:

Greg Doncon, Mike Kelly, Doug Abrecht, Bob French, Mike Ewing, Richard Snowball, Clinton Revell, Paul Sanford, John Morrissey, Warren Vogel, Avril Baxter, Michael Hyde, David Hartley, Bill Smart, David Ferris, Cathy Waters, Mike McFarlane, Susie Brown, Jeremy and Kate Atkins, Kevin Binning, Melinda Mann, Geoff Cockerton, Richard McLellan and Ray Canfield.

The Meat Program of Agriculture Western Australia, through the Eastern Wheatbelt Prime Lamb Project, has funded my activities in this preliminary work of investigating and promoting the use of perennial native grasses in the wheatbelt.

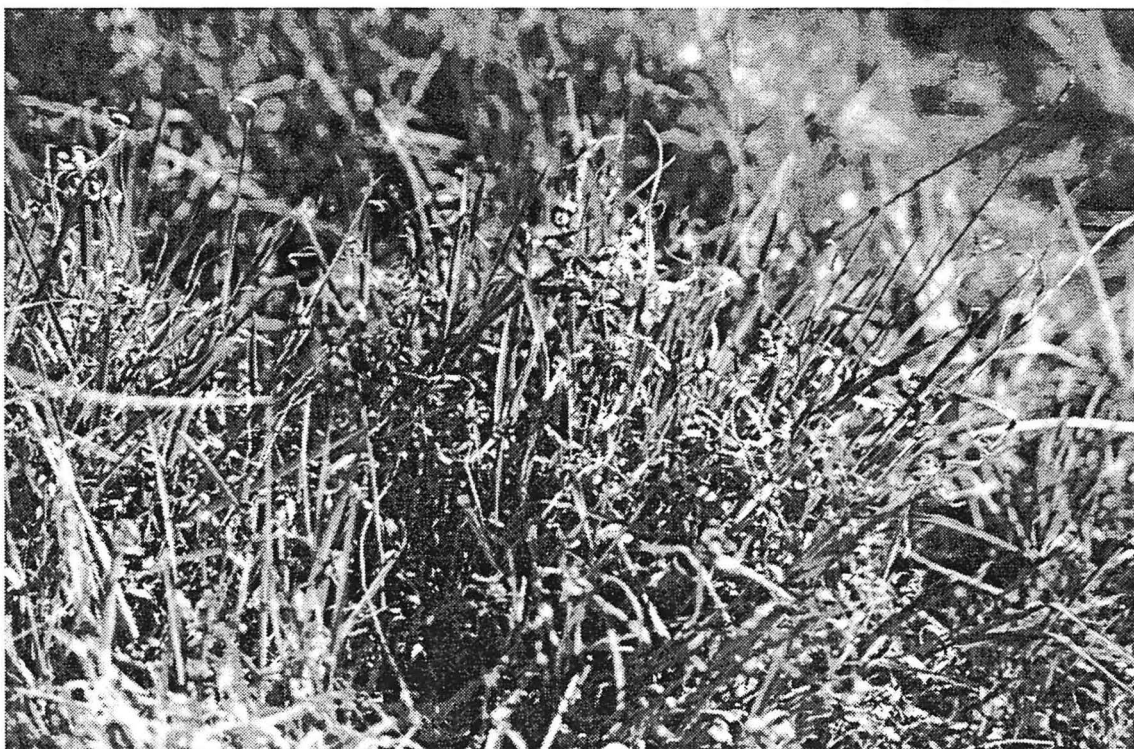
Roy Butler
Dryland Research Institute
PO Box 432
Merredin WA 6415

March 1999



Contents

	Page
Introduction	4
Native perennial grasses for pastures	5
Other uses for native perennial grasses	7
Suggested actions	8
Conclusion	8
References and further reading	9
 Appendices	
1. Permacropping into a perennial native pasture base (Cluff <i>et al.</i> 1998)	11
2. Native grasses with potential for growing on wheatbelt farms	13
3. Western Australians with interest and/or expertise in native grasses	14
4. Interstate organisations promoting interest in native grasses	15
i. Native Grass Resources Group Inc.	15
ii. Stipa Native Grasses Association Inc.	17
iii. ANGLSIA (Australian Native Grass and Legume Seed Industry Association Inc.)	17
iv. LIGULE Project	17
5. Useful websites	18
6. Native grass network database (1996)	19



Introduction

The diversity, beauty and usefulness of Western Australia's native trees, shrubs and annual flowering plants are well known, but few people in the south-west are aware of, let alone interested in, our native grasses. This is not surprising, given that intensive cropping and grazing have greatly reduced the areas of native grassland that did exist, and those areas were probably never a prominent feature of the South West Province, unlike the situation in the Eastern States. But there are good reasons to believe that some of these native grasses could improve the sustainability and profitability of wheatbelt farms.

Many people, including some farmers, doubt that farming as it is presently practised in the wheatbelt will be sustainable in

the long term. Rising water tables, saline or acidic soils, declining populations of native animal and plant species, and wind and water erosion have all followed the clearing of large areas for annual crops.

The problems are well recognised and a huge physical and financial effort is being made to halt or reverse this decline. Clearly, there is no simple or best solution; rather, many solutions are needed. This paper suggests one: that pastures containing native perennial grasses could improve the sustainability of some wheatbelt farms without compromising farm profitability.

I hope that this paper will stimulate some thoughts and actions.



Native perennial grasses for pastures



The basic hypotheses of this paper are, firstly, that wheatbelt pastures are not good, and could be improved if they contained perennials and, secondly, that native perennial grasses should be considered for inclusion in pastures. The difficulty of integrating perennial-based pastures with annual crops in a profitable farming system is acknowledged but this is seen as a challenge, not a barrier.

The definition of a good pasture, especially in the wheatbelt, would be an interesting topic for discussion. Farmers whose main interest is their crops might consider that a pure, dense stand of annual legumes, without grasses or weeds, constitutes a good pasture. Others might define a good pasture as one that contains a dense mixture of plants, both grasses and legumes, and both annuals and perennials. Some farmers believe that a good pasture should contain, in addition to grasses and legumes, fodder shrubs such as saltbush, bluebush, tagasaste or *Acacia saligna*, and probably some weeds. Farmers with livestock expect a good pasture to provide a choice of safe and nutritious grazing.

Maybe a good pasture could be simply defined as one that contains the desired

species to meet the landholder's objectives of production and sustainability (Paul Sanford, personal communication 1998). No matter which definition is chosen, few pastures in the wheatbelt could be called good pastures.

Thanks to research, farmers can select from a variety of annual legumes suitable for wheatbelt pastures. There is also an array of introduced annual grasses that are widely naturalised. Farmers have mixed feelings about the annual grasses because, although they can provide useful feed, their seeds can be troublesome – and even poisonous – to stock, and they can be serious crop weeds.

Wheatbelt farmers have access to only very few perennials that have been proven to be suitable for pastures. One perennial legume that is attracting renewed interest in Western Australia is lucerne. With care in site selection and weed and pest control, especially during establishment, lucerne should prove a modest success in the wheatbelt. Some introduced perennial grasses are being grown successfully in the northern midlands, but few summer active perennial grasses have been found suitable for low rainfall areas, especially those areas without fresh groundwater.

Native perennial grasses have so far been overlooked and it is time that the natives were seriously considered for reintroduction onto wheatbelt farms, particularly in low rainfall areas. Certainly, both native and introduced summer active perennial grasses, if successfully established, should bind soil in summer, use summer rainfall and ground water and provide some summer and autumn grazing. However *native* grass species could provide additional advantages. Waters *et al.* (1997) suggested that if pastures contained native grasses, then:

- the biodiversity and ecological integrity of a region could be maintained or improved, and the number of habitats suitable for indigenous flora and fauna could be increased;
- pastures could survive extended periods of drought because the natives have evolved under Australia's generally harsh conditions of low and variable rainfall and low soil fertility. This should mean that, even if overall pasture production did not increase, it would be more regular from year to year;
- the necessary inputs of nitrogen and phosphorus, in particular, would be reduced.

There is a surprising number of species of native grasses still to be found in the wheatbelt. Many probably have little agricultural potential but Appendix 2 lists some that could be suitable for wheatbelt farms. The list includes grasses that tolerate acid or saline soils, waterlogging, frost, grazing and drought. All tolerate low levels of nutrients and some will also respond to increased soil fertility.

Better pastures – containing perennials – should be better for livestock, but greater livestock production alone is unlikely to justify improvement of present wheatbelt pastures. In fact, livestock might be the least important beneficiaries. The main justification for improving these pastures is the potential benefit to the land: more water use, both of summer rain and groundwater; improved soil structure; and reduced soil erosion.

Crops might also benefit from the inclusion of native perennial grasses in wheatbelt pas-

tures if the practice of permacropping (Appendix 1) could be made to work in the west. Cathy Waters (personal communication 1999) warned, though, that permacropping has only been successful in New South Wales where there are existing good native grass pastures and moderate rainfall (~600 mm).

Pastures containing native perennial grasses will not appeal to all wheatbelt farmers. It will take at least three to four years for the perennials to establish and become useful, and good cropping paddocks are unlikely to be turned into long rotation pastures. Instead, it is more likely that perennial-based pastures will only be tried on marginally productive paddocks, such as those containing acid sands, or salt affected areas. Farmers who do not have such land may be unwilling to allocate good crop land to long rotation pastures. Other farmers may have suitable land for long rotation pastures but be unwilling or unable to upgrade their pasture management skills to the level needed to successfully manage perennial-based pastures. The perceived cost and difficulty of re-establishment of a native grass-based pasture following cropping may be a disincentive, but low cost, practical seed collection and sowing systems are under development in South Australia and NSW (Michael Hyde, personal communication 1998, and Cole and Waters 1997).

Farmers who do wish to introduce native perennial grasses into their pastures may find difficulty in obtaining suitable, or sufficient, seed in Western Australia. Some seed varieties could be purchased from interstate or this shortage could be seen as an opportunity to develop a small business by harvesting seed from natural grass stands and bulking this up for sale. The Australian Native Grass Seed Production Manual, available for sale¹ in early 1999, should prove valuable to those wanting to establish and manage native grasses and to harvest and process seed.

¹ Production of this manual is a joint project between ANGLSIA (Australian Native Grass and Legume Seed Industry Association), NSW Agriculture, NSW Department of Land and Water Conservation, Queensland DPI, University of New England and the Native Grass Resources Group Inc.

To purchase copies, contact Cathy Waters, Research Officer (Pasture and Rangelands), NSW Agriculture, PMG 19, Trangie, NSW 2823.

Other uses for native perennial grasses

Although this paper concentrates on the potential use of native perennial grasses in pastures in the agricultural areas of the Western Australian wheatbelt, mention should be made of other uses – both actual and potential – for native grasses.

Currently, the most widespread use of native grasses and legumes is in the pastoral industry where their low nutrient requirements and persistence through droughts are well recognised and valued.

Whalley (1997) suggested the following additional uses for native grasses:

- mine and other degraded site reclamation and stabilisation;
- roadsides;
- public amenities, such as low maintenance areas of public parks and golf course roughs;
- lawns, both fine and rough (requiring less fertiliser and water than traditional lawns);
- garden ornamentals and landscaping;
- health foods;
- essential oils;

- perfumes;
- dried arrangements;
- sand dune stabilisation.

Rod Butcher, agronomist with SBS Rural IAMA at Merredin, suggested that native perennial grasses could be grown in waterways (from which stock are excluded) to reduce flow rates and erosion, and to improve water quality in dams by trapping silt and dung.

The Land For Wildlife Scheme, managed by the Western Australian Department of Conservation and Land Management, is placing emphasis on the inclusion of native grasses in regenerated areas, including creek banks and bushland reserves (Anon. 1998).

There is already a modest market for native grass seed, but presumably as recognition of the value of native grasses grows, demand for seed will also increase. Some farmers might then be interested in establishing stands of native grasses or managing existing stands, specifically for seed.



Suggested actions

- **Investigate further**

A comprehensive reading list is included in this paper and, for those with access to the Internet, some relevant web addresses are listed in Appendix 5.

- **Talk to others**

Talk about native grasses with other people, such as members of catchment groups or Land Conservation District Committee members, CALM district officers and Agriculture Western Australia development officers and pasture researchers.

- **Look for native grasses**

Check your farm, roadsides, bush areas and other reserves (including cemeteries) for interesting grasses that may be natives. Have them identified.

- **Join or form a local network**

Though few in number, there are Western Australians who are, for various reasons, interested in native perennial grasses. If this small and diverse group of people combined its knowledge and resources in some kind of network, real progress could be made. Such a network might also be successful in attracting research and development funds.

Appendix 3 lists the names and addresses of some Western Australians with an interest in native grasses.

- **Join an interstate network**

Currently the interest in, and activity related to native grasses in the Eastern States and South Australia is greater than in Western Australia. Appendix 4 gives the names and details of some relevant interstate organisations.

Appendix 6 contains the Native Grass Network Database. This is a very comprehensive list of people and projects, predominantly in the Eastern States. It may be a little out of date as it was compiled in 1996 and has not subsequently been updated.

- **Apply for funding**

Financial support may be necessary if, for example, a group wants to establish trial plots of different grass species, start a seed collection, or visit other places where research activities with native perennial grasses are further advanced. The Natural Heritage Trust is one possible source of funds.

Conclusion

The establishment and maintenance of perennial-based pastures can be difficult. This is true even in areas of medium to high rainfall and fertile soils, and when farmers are specialists in livestock production and skilled in pasture management.

So why suggest that wheatbelt farmers should incorporate native perennial grasses into their pastures? Surely it will be too difficult, too expensive and maybe not even possible? That may prove to be the case, but how can we be sure without trying? The benefits could be considerable if long rotation, perennial-based pastures can be integrated into the farming system. In summer and autumn there would be

more water used and less soil blown or washed away, and stock would have better grazing. Salt affected or acidic land could be more productive and, possibly, the yields of crops following these pastures would be improved.

This paper is not suggesting that native perennial grasses are the answer to the wheatbelt's problems. The purpose is rather to suggest that there are strong indications that some of these grasses could play a useful part in improving the profitability and sustainability of wheatbelt farms. Work is needed to determine whether this is true.

References and further reading

- Anon. (1998). Native grasses to the fore! Western Wildlife, Newsletter of the Land For Wildlife Scheme. Published by the WA Department of Conservation and Land Management, Vol. 2, No. 1, page 3.
- Anon. (1998). Three-year project into native grasses. Australian Landcare, April, 58–9.
- Australian grasslands (1970). Editor R. Milton Moore. (Australian National University Press)
- Barrett-Lennard, Ed and Ewing, Mike (1998). Saltland pastures? They are feasible and sustainable – we need a new design. Proceedings of the 5th Workshop on Productive Use and Rehabilitation of Saline Land, 10–12 March 1998, Tamworth, NSW.
- Bowman, A.M. (1992). The use of native grasses – problems and potential. Wool Technology and Sheep Breeding, December, 143–6.
- Bowman, A.M., Brooke, G. and Van de Ven, R. (1998). Native pasture management in the 400-600 mm rainfall zone of northern NSW. Proceedings of the Ninth Australian Agronomy Conference, Wagga Wagga, NSW, 302–5.
- Cochrane, Donald (1998). Native perennial grasses for Western Australia. Land Management Society Newsletter, November, 11–2.
- Cole, I. and Waters, C. (1997). Pastures under adverse conditions – handling what you have: Harvesting and sowing native grasses. Proceedings of the 12th Annual Conference of the Grasslands Society, NSW, 95–103.
- Edwards, Robyn (1997). Pasture you can't see for grass. Grow, Spring, 20–1.
- Francis, Patrick (1997). Caution given over higher input pasture system. Australian Farm Journal Sustainable Agriculture, September, 4–5.
- Garden, D.L. and Dowling, P.M. (1997). Native grass-based pastures. Technical Bulletin 47, NSW Agriculture.
- Gardner, C.A. (1952). Flora of Western Australia, Vol. 1, part 1: Gramineae.
- Lamp, C.A., Forbes, S.J. and Cade, J.W. (1990). Grasses of temperate Australia. A field guide. (Inkata Press P/L)
- Lefroy, E. (1991). Native grasses in South Western Australia. In: Native Grass Workshop Proceedings, 16,17 October, 1990, Dubbo, NSW. Editors: Dowling, P.M. and Garden, D.L. Melbourne. Australian Wool Corporation, 127–31.
- Maconochie, J.R. (1984). Plants of the Australian arid zone – an undeveloped potential. In: Plants for Arid Lands. Proceedings of the Kew International Conference on Economic Plants for Arid Lands, held in the Jodrell Laboratory, Royal Botanic Gardens, Kew, England, 23–24 July 1984.
- MacFarlane, Terry and Baxter, Avril (1999). Native grasses – the unsung heroes. Western Wildlife, Vol. 3, No. 1, 6–7.
- Mitchell, Meredith (1996). Native grasses. Identification handbook for temperate Australia. Agmedia, East Melbourne, Victoria.
- Mitchell, Meredith and Rich, Eloise (1995). Native grasses realise their potential. In: Pasture – use it or lose it. Proceedings of 36th Annual Conference of the Grasslands Society of Victoria Inc., 187–8.
- Mitchell and Wilcox (1994). Arid shrubland plants of Western Australia. Second edition.
- Native grasses as pastures. Proceedings of a workshop held at Trangie Agricultural Research Centre, NSW, 26 March 1998.
- Paterson, J.G. (1992). Description and key to the identification of grasses in south-western Australia. Second edition. Bulletin 4210, Department of Agriculture, Western Australia.
- Proceedings of the First National Perennial Grass Workshop (1993). Invited reviews and supporting papers from the workshop held at the Pastoral and Veterinary Institute, Hamilton, Victoria,

27-29 October 1993. Co-sponsored by MRC, DRDC, WRDC, LWRRDC and CDB.

Proceedings of the First Workshop of The Australian Native Grass and Legume Seed Industry Association Inc. held at Brisbane, Queensland, 22 October 1997.

Proceedings of the Second Australasian Perennial Grass Workshop (1995). Invited reviews and supporting papers from the workshop held in Launceston, Tasmania. Co-sponsored by MRC, IWS, GRDC and LWRRDC.

SGS Prograzier (1997-). Newsletters for producers in the Sustainable Grazing Systems Key Program. Published by the Meat Research Corporation for beef and sheep producers in the temperate pasture zone of southern Australia.

Vogel, Warren (1995). The hidden asset: native pasture management. In: Pasture - use it or lose it. Proceedings of 36th Annual Conference of the Grasslands Society of Victoria Inc. 188-9.

Waters, C.M., Loch, D.S. and Johnston, P.W. (1997). The role of native grasses and legumes for land revegetation in central and eastern Australia with particular reference to low rainfall areas. Tropical Grasslands, Volume 31, 304-10.

Whalley, Wal (1997). Native grasses and legumes. What are their strengths and limitations? Where might they have a place? Proceedings of the First Workshop of the Australian Native Grass and Legume Seed Industry Association Inc. Brisbane, Queensland, 3-11.



Appendix 1

Permacropping into a perennial native pasture base*

D. Cluff⁽¹⁾, C. Seis⁽²⁾ and C.E. Jones⁽³⁾

⁽¹⁾ 'Olive Lodge', Birriwa, NSW 2844

⁽²⁾ 'Winona', Gulgong, NSW 2852

⁽³⁾ Department of Botany, University of New England, Armidale, NSW 2351

Abstract

Diverse perennial native pastures offer the advantage of high productivity combined with long term persistence. Conventional crop production techniques have required the destruction of these pastures, resulting in undesirable side effects such as soil erosion, compaction, acidity and soil salinity. Permacropping is an innovative practice which combines 'farming' and 'grazing' into a compatible single system of land management that has the potential to overcome, or greatly reduce, these side effects. The results of field trials on two properties in the Central West of NSW show that productive, viable crops can be grown whilst allowing diverse native pastures to regenerate.

Key words: Permacropping, native pasture.

Introduction

In pre-European times, the vegetative cover of the wooded grasslands of the tablelands, slopes and plains in the Central West of NSW was, almost without exception, perennial in nature. The introduction of European agricultural and grazing systems led to the intentional and non-intentional replacement of the perennial species with introduced annual plants. This transition was hastened by the widespread use of bare fallows maintained by repeated cultivation and, more recently, by multiple herbicide applications. These cropping practices have contributed to soil structural decline, markedly increased the risk of erosion and salinity and reduced the level of biological activity in soil.

However there remains an economic imperative for many farmers to grow crops. The

challenge is to achieve economic crop production without damaging the resource base. Whilst enormous effort has been devoted to the methodologies of reduced tillage and conservation farming practices, little progress has been made in improving soil structure, increasing soil infiltration rates or organic carbon levels (refer I. Packer, this proceedings). Solutions have been sought by modifying farming techniques, but it is difficult to address problems using the same tools that created the problem.

It is normally regarded as necessary to remove all vegetation prior to an annual crop being sown. With a re-direction in thinking, many avenues for the inclusion of water-use efficient native perennial vegetation in annual cropping systems could be found, bearing in mind that the more closely our agricultural systems mimic natural perennial ecosystems, the more likely they are to be environmentally stable. A balanced mix of the grass and legume species that originally covered the landscape is considered the most appropriate vegetation cover for long-term high productivity. Direct drilling cereal crops into frost-dormant native pastures is seen as a method of enhancing winter fodder production or producing an economically viable cereal crop. Winter germinating annual grasses and weeds are suppressed and the principally summer growing native pastures are not active until the crop nears maturity. The perennial pasture base remains unharmed and is available for grazing immediately after completion of the harvest.

This paper presents results of the field trials carried out by the authors in 1995, 1996 and 1997.

* From: Proceedings of the Ninth Australian Agronomy Conference, Wagga Wagga 1998.

Method and results

The properties 'Olive Lodge' (red podsolic soil, Birriwa, NSW) and 'Winona' (granitic loam, Gulgong, NSW) have had a long history of cereal crop production as well as grazing sheep and cattle. The initial ground preparation for cereals was disc ploughing, followed by a number of tined implement cultivations for weed control, followed by sowing. The rotation principle was generally one or two years of crop followed by up to five years of pasture, based on sub. clover.

The permacropping method being progressively developed on these properties over recent years has involved retaining the natural populations of *Bothriochloa*, *Paspalidium* or *Eriochloa* based native pastures for grazing over summer and autumn then direct drilling cereal crops (wheat or oats) in May. The paddocks are heavily grazed in autumn to reduce the pasture bulk, and sprayed one or two days prior to sowing with Round Up® (to control annual grasses and broadleaf weeds). Fertiliser application rates are determined prior to sowing by soil testing. Additional weed control, if needed, is carried out using post-emergent selective herbicides. Approximately 300 ha is currently being permacropped on these properties. In 1997 crops were sown without herbicide on 'Winona' and similar yields to those on 'Olive Lodge' were obtained (Table 1). The dominance of perennial native pastures over annual grasses and broadleaf weeds could

ultimately allow the production of winter cereal crops without the need for cultivation or herbicide application.

Discussion

The stability of an ecosystem depends not only on its diversity but also on the interconnectedness of its component parts. There is neither diversity nor interconnectedness in any type of annual cropping system currently practised. Even the more 'sustainable' eco-farming, conservation farming and organic farming regimes lack the living base which ensures continuity of biological activity within and between years. The intrinsic ecological benefits associated with permacropping provide a framework for addressing a suite of land degradation problems concurrently with cash flow.

The findings reported here are from commercial size paddocks rather than from small-scale research plots. While the latter provides the opportunity for replication and statistical comparisons of treatment means, the reluctance of landholders to adopt the findings from small-scale plots can markedly hinder the transfer of the technology to broadacre farming.

Permacropping is a principle which needs to be implemented on-farm, by farmers, in ways which suit their individual needs. The alternative of bare fallow results in soil left unprotected and biologically inactive for extended periods of time.

Table 1. Varieties sown, herbicide and fertiliser rates, rainfall received and yields obtained in 1995, 1996 and 1997 on 'Olive Lodge' and 'Winona'

Location	Year	Crop	Herbicide	Fertiliser	Rainfall May–Nov. (mm)	Yield
Olive Lodge	1995	Coolabah oats	600 mL/ha Round Up®	125 kg/ha single super	337	4.2 t/ha (hay)
Olive Lodge	1996	Jantz wheat	750 mL/ha Round Up® 700 mL/ha MCPA 500® 1000 mL/ha Hoegrass®	120 kg/ha Granuloc	472	3.8 t/ha (grain)
Olive Lodge	1997	Jantz wheat	750 mL/ha Round Up® 1000 mL/ha Tristar®	120 kg/ha DAP	278	1.4 t/ha (grain)
Winona	1996	Echidna oats	1000 mL/ha Round Up®	70 kg/ha Starterphos®	494	4.0 t/ha (grain)
Winona	1997	Echidna oats		70 kg/ha Starterphos®	288	1.5 t/ha (grain)

Appendix 2

Native grasses with potential for growing on wheatbelt farms

Species	Common name	Source of suggestion*
<i>Amphibromus neesii</i>	Swamp grass	DC
<i>Amphipogon strictus</i>	Greybeard grass	TMac
<i>Aristida contorta</i>	Wind grass, Kerosene grass	ARB
<i>Austrodanthonia caespitosa</i>	Common wallaby grass, White top	RMc, TMac
<i>Austrodanthonia occidentalis</i>	Wallaby grass	DC
<i>Austrodanthonia penicillata</i>	Wallaby grass	RMc
<i>Austrodanthonia setacea</i>	Small flower wallaby grass	DC
<i>Austrostipa campylachne</i>	Forest spear grass	TMac
<i>Austrostipa elegantissima</i>	Feather spear grass	TMac
<i>Austrostipa hemipogon</i>		TMac
<i>Austrostipa juncifolia</i>	Rush leaved spear grass	RMc, TMac
<i>Austrostipa mollis</i>	Soft spear grass	TMac
<i>Austrostipa pycnostachya</i>	Salt grass, Small head spear grass	DC, TMac
<i>Austrostipa semibarbata</i>	Bearded spear grass	RMc, TMac
<i>Austrostipa tenuifolia</i>		TMac
<i>Austrostipa variabilis</i>	Spear grass	RMc
<i>Enneapogon polyphyllus</i>	Leafy nine-awn	ARB
<i>Enteropogon acicularis</i>	Curly windmill grass	ARB
<i>Eriachne</i> sp.		ARB
<i>Monachather paradoxa</i>	Bandicoot grass, Broad leaved wanderrie grass	RMc
<i>Microlaena stipoides</i>	Meadow rice grass	TMac
<i>Neurachne alopecuroidea</i>	Foxtail mulga grass, Cats tail	RMc, ARB, DC, TMac
<i>Paractaenum refractum</i>		RMc
<i>Paspalidium basicladum</i>		RMc
<i>Poa drummondiana</i>	Knotted poa	TMac
<i>Sporobulus virginicus</i>	Sand couch	TMac
<i>Themeda triandra</i> (formerly <i>T. australis</i>)	Kangaroo grass	RMc, TMac
<i>Thyridolepis multiculmis</i>	Soft wanderrie grass, Mulga grass, Barbed wire grass	RMc

*Source of suggestion:

ARB = Roy Butler, Dryland Research Institute, PO Box 432, Merredin WA 6415
DC = Donald Cochrane, Duranillin WA 6393
RMc = Richard McLellan, Landcare Services Pty Ltd, PO Box 167, York WA 6302
TMac = Terry MacFarlane, CALM, Brain Street, Manjimup WA 6258

Appendix 3

Western Australians with interest and/or expertise in native grasses

Name	Address	Telephone
Atkins, Jeremy and Kate	PO Box 12, Bakers Hill 6562	(08) 9574 1400
Baxter, Avril	Land For Wildlife, CALM, PO Box 100, Narrogin 6312	(08) 9881 1444
Butler, Roy	Dryland Research Institute, PO Box 432, Merredin 6415	(08) 9081 3111
Cochrane, Donald	Duranillin 6393	(08) 9863 1066
Cockerton, Geoff	Landcare Services Pty Ltd, PO Box 167, York 6302	(08) 9641 4064
Dewing, Jenny	Land For Wildlife, Bridgetown Telecentre, PO Box 118, Bridgetown 6255	(08) 9761 2712
Hartley, David	Executive Director, Sustainable Rural Development, Agriculture Western Australia, PO Box 483, Northam 6401	(08) 9690 2198
Lefroy, Ted	CLIMA, University of Western Australia, Nedlands 6907	(08) 9380 2561
Lynch, Dallas	Landcare Coordinator, PO Box 17, York 6302	(08) 9641 2233
MacFarlane, Terry	CALM, Brain Street, Manjimup 6258	(08) 9771 7988
McLellan, Richard	Landcare Services Pty Ltd, PO Box 167, York 6302	(08) 9641 4064
Sanford, Paul	Pasture Research Officer, Agriculture Western Australia, 120 Albany Hwy, Albany 6330	(08) 9892 8475

Appendix 4

Interstate organisations promoting interest in native grasses

(i) Native Grass Resources Group Inc.

A steering committee for this group was formed in 1994, and the group was incorporated in 1997. The group aims to raise awareness, appreciation and usage of native grasses and act as a focal point for the community and key agencies in the Mount Lofty Block (the environmental region of South Australia from Kangaroo Island to Wilmington).

The group produces a biannual journal, 'Native Grass, South Australia', and a quarterly newsletter, 'Grass Notes', and has begun a series of species information

sheets. The group also has a comprehensive library and a reference specimen collection, both located at the Mount Barker Catchment Resource Centre.

A membership application form for this group is given on the following page.

For more information, contact:

Michael Hyde or Bob Myers
Mt Lofty Ranges Catchment Centre
5C Cameron Street
Mt Barker, South Australia 5251
Phone (08) 8278 9350

Native Grass Resources Group Inc.

MEMBERSHIP APPLICATION 1998-99

Surname	Given names	
Surname	Given names	
Organisation		
Postal Address		
.....	Postcode	
E-mail		
Phone (Home)	(Work).....	Fax
Property name	Rapid number	
Grid reference	Latitude	Longitude
Signed	Date	

Occupation (if relevant to the Group) i.e. skills you could offer the Group

.....
.....

My special native grass interest

.....
.....

Involvement (e.g. grower of seed, potential committee member, helper with field days/functions)

.....
.....

A biannual journal will be circulated in summer and winter and 'Grass Notes', the newsletter, circulated in spring and autumn.

Please tick:

- Ordinary/household: \$20.00
- Government/corporate: \$50.00
- Concession (student/pensioner): \$10.00

Make cheques payable to:

Native Grass Resources Group Inc.

Please return to:

Membership Application
Native Grass Resources Group Inc.
Mt Lofty Ranges Catchment Program
5C Cameron Street
Mt Barker SA 5251

(ii) Stipa Native Grasses Association Inc.

This is a group of native grass enthusiasts in the central west of NSW around Dubbo. The members considered that native grasses had been undervalued and, after a series of community workshops, field days and bus trips, Stipa was formed in 1997.

The main aim of Stipa is to promote research into native grass management and the role of native grasses as a component of pastures.

The group has produced the proceedings of a workshop ('Native grasses as pastures') held at Trangie in March 1998, and also produces a newsletter.

For more information, contact:

Daryl Cluff
Stipa Native Pastures Management and
Development Officer
PO Box 18, Coolah, NSW 2843
Phone (02) 6377 1515 or (02) 6377 1487

Susie Brown
Landcare Coordinator, Coolah/Dunedoo
14 Charles Street
PO Box 18, Coolah, NSW 2843
Phone (02) 6377 1515

(iii) ANGLSIA (Australian Native Grass and Legume Seed Industry Association Inc.)

Functions:

- To collate and disseminate as much technical information as possible on the use of native grass and legume species.
- To improve communication by bringing together seed producers, scientific researchers and users of native grass seed from all industries.
- To draft and implement an industry code of practice for the sale of seed.

For more information on ANGLSIA (and also the NSW Agriculture Native Grasses Project), contact:

Cathy Waters
Research Officer (Pasture and Rangeland)
NSW Agriculture
Agricultural Research Centre
PMG 19, Trangie, NSW 2823
Phone (02) 6888 7404

(iv) The LIGULE Project (Low Input Grasses Useful in Limiting Environments)

LIGULE is an innovative native grass research project aimed at improving both the productivity and sustainability of infertile hill lands in south-eastern Australia. The project, which commenced in 1989, is a joint venture between the NSW Department of Land and Water Conservation at Cowra and Wagga Wagga, and the Victorian Department of Natural Resources and Environment at Rutherglen and Bendigo.

LIGULE aims to identify native grasses that make better use of water and nutrients because they grow at a time when most other pasture species are either dormant or dead. The project specifically targets upland areas where soils are generally shallow, stony, acid and infertile.

In the first stage of the project, over 800 lines of native perennial grasses were collected from more than 200 sites throughout NSW and Victoria. These lines were assessed for survival, growth, flowering and seed production. In the second stage, the most promising lines are being evaluated in the field for their agricultural value and ability to reduce nitrate leaching and groundwater recharge.

LIGULE is the most comprehensive study of agriculturally useful native grasses in Australia undertaken to date.

For more information, contact:

Bill Johnston
NSW Department of Land and Water
Conservation
Wagga Wagga Research Centre
Wagga Wagga

Phone (02) 6931 1777

Meredith Mitchell
Victorian Department of Natural Resources
and Environment
Institute for Integrated Agricultural
Development
Rutherglen

Phone (02) 6030 4500

Appendix 5

Useful websites

Address	Title
http://www.agric.nsw.gov.au/Infodel/Media-release/grassnative.htm	Natives keep on keeping on
http://www.shoalhaven.net.au/~farrar/site/natG-L.html	Native grass and legume seed list and prices
http://www.agric.nsw.gov.au?Past/WDN/may-june-1998/story2.htm	Native grasses as pastures – a workshop report
http://www.agric.nsw.gov.au/Infodel/scipub/TB47/6-native.htm	Native grass-based pastures Literature review
To be announced (Starting in July 1999)	The Native Grasses Database Produced by NSW Agriculture and the NSW Department of Land and Water Conservation. Will contain biological, agronomic, and ecological information, sowing and harvesting information, research, references and Who's Who of the native grass world.

Appendix 6

Native Grass Network Database

**National Landcare Program
and
Department of Natural Resources and Environment
and
Native and Low Input Grasses Network Group**

Native Grass Network Database

**Database on contacts of current people
and projects involved in native and low input
grasses in temperate Australia.**

October 1996

Compiled by:

Warren Vogel

and

Melinda Mann (nee Littlejohn)

Department of Natural Resources and Environment, Wodonga

AGRICULTURE VICTORIA

**Institute for Integrated Agricultural
Development (IIAD)**

**Agriculture Victoria
1 McKoy Street
West Wodonga, Victoria 3690
AUSTRALIA**

**Telephone (02) 6055 6111
Facsimile (02) 6055 6200**

Native and Low Input Grass Network Database

Hi,

As you are probably aware, after being contacted at some stage within the last year, we have been compiling a list of people actively interested in native or low input grass research, development or extension. This was one of the recommendations that came out of the Native and Low Input Perennial Grass Conference in Launceston.

Well, here it is!

The aim of the database was to provide a network of contacts for those working in the area of native or low input grasses within temperate Australia. It is hoped that the list will provide more contacts, ideas, cooperation and collaboration for those involved in native and low input grasses.

The Native and Low Input Grass Network Group (formed after the Launceston workshop, and chaired by Greg Lodge) will be coordinating the network database. This database has only been sent to those on the list. Do you want to remain on the list that may be available for wider distribution to others working in similar areas? Are you still working in this native and low input grass area? Do you know of any further contacts to be added to the list?

We are also seeking further comment, additional material and corrections to bloopers or missed areas. We need much more project information too! If you have any queries, don't hesitate to contact me (or at least leave a message). Please send any further material to the above address as soon as possible.

Hope the list of contacts is useful.

Warren Vogel
Industry Development Officer, Pastures

DNRE, 1 McKoy Street, Wodonga, Vic. 3690
E-mail: VogelW@stingray.agvic.gov.au

Native Grass Network Database

What is the database?

The Native Grass Network Database is a compilation of people actively interested in native and low input grasses research, development and extension (as at September 1996) mainly in the temperate zone. The list also includes a small register of current projects, descriptions and funding sources.

How to use the database?

The list is made up of three parts.

- The first part is the contact list containing:
 - Page 1: name, organisation, address, phone, fax.
 - Page 2: name (same again), position, area of interest, categories and species.
- The second part is the project list containing:
 - name, project title, project description, collaborators, funding organisation and project key words.
- The third part is the contact list for the landholders within the Community Grasses Project.

This native grass network database is a list of contacts mainly in the temperate zone of Australia. It is a snapshot in time of most people actively interested in native or low input native grasses during 1995/6 and may not cover all people, projects (particularly those in non-agricultural fields) and other areas (such as the tropics of northern Australia).

Acknowledgements

The Native and Low Input Grasses Network Group, including Alec Lazenby, Greg Lodge, Meredith Mitchell, Wal Whalley, Kirsty Flower, Denys Garden, Bill Johnson, Don Loch, Bob Reid, Carmen Saunders and Clive Thomas have contributed to the design, contacts and development of the database. Considerable effort in the data input by Melinda Mann (nee Littlejohn) is gratefully appreciated.

PART 1

Name	Organisation	Address	Phone number	Fax
Adams, Phillip	Lachlan Valley Seeds Pty Ltd	Bedgerebong Road Forbes NSW 2871	(02) 6857 3324	(02) 6857 3324
Adkins, Dr Steve	University of Queensland	Brisbane QLD 4072	(07) 3365 2072	(07) 3365 1177
Aitchison, Murray	Progressive Seeds	PO Box 10 Mt Crosby QLD 4306	(07) 3201 1741	(07) 3201 1006
Albertsen, Tony	Agriculture Western Australia	PO Box 1231 Bunbury WA 6231	(08) 9725 5289	(08) 9725 4136
Allen, Judy	Victorian Indigenous Nurseries Cooperative	Yarra Bend Road Fairfield VIC 3078	(03) 9482 1710	(03) 9486 7155
Allen, Catherine	Department of Natural Resources and Environment	PO Box 1055 Albury NSW 2640	(02) 6041 6086	(02) 6056 6200
Anderson, Alan	Landholder	C/- Post Office Kojonup WA 6395	(08) 9832 8055	(08) 9832 8055
Annandale, Mark	University of Queensland	Centre for Mined Land Rehabilitation Brisbane QLD 4072	(07) 3365 3706	(07) 3365 3452
Arkell, Peter	Agriculture Western Australia	PO Box 1231 Bunbury WA 6231	(08) 9725 5289	(08) 9725 4136
Bahnisch, Len	University of Queensland	Gatton College Lawes QLD 4343	(07) 5460 1300	(07) 5460 1112
Barclay, Ruth	NSW Agriculture	PO Box 286 Cobar NSW 2835	(02) 6836 2108	(02) 6836 3443
Barlow, Tim	Trust for Nature	South West Region VIC	(03) 5340 6558	(03) 5340 6556
Barnett, Guy	CSIRO Division of Wildlife and Ecology	PO Box 84 Lyneham ACT 2602	(02) 6242 1530	(02) 6242 1343
Barrett-Lennard, Phil	Agriculture Western Australia	Becher Street Harvey WA 6220	(08) 9729 1507	(08) 9729 1673
Barton, Edwina	Friends of Grasslands	122 Monterey Apartments 14 Boolee Street Reid ACT 2601	(02) 6257 8668	
Bean, Judy	University of New England	Department of Botany Armidale NSW 2351	(02) 6772 3340	(02) 6773 3283
Beckers, Doug	NSW National Parks and Wildlife Service	PO Box 1007 Dubbo NSW 2830	(03) 5155 9290	(03) 5155 9290
Bell, David	The University of Western Australia	Botany Department Hackett Drive Nedlands WA 6009	(08) 9380 2217	(08) 9380 1001
Bell, Richard	Murdoch University	Environmental and Natural Resources Murdoch Drive Murdoch WA 6150	(08) 9360 6000	(08) 9310 4997
Bellairs, Sean	University of Queensland	Centre for Mined Land Rehabilitation Brisbane QLD 4072	(07) 3365 2924	(07) 3365 3452
Bennett, Don	Agriculture Western Australia	PO Box 1231 Bunbury WA 6231	(08) 9725 5289	(08) 9725 4136

Name	Position	Area of Interest	Categories	Species
Adams, Phillip	Commercial seedgrower	Native grasses	Seed grower/seed processing	Danthonia
Adkins, Dr Steve		Native grasses	Evaluation/selection/agronomy and use/ecology/management	
Aitchison, Murray		Native grasses	Evaluation/agronomy and use/seed production/seed processing/marketing	
Albertsen, Tony	Research officer	Native and low input grasses	Extension/education	
Allen, Judy	Sales	Native and low input grasses		Many
Allen, Catherine	M. Nat. Res. Student	Native grasses	Agronomy/ecology/extension/management/survey	
Anderson, Alan	Landholder	Native and low input grasses	Agronomy and use	
Annandale, Mark		Native grasses	Evaluation/selection/agronomy and use/ecology/management	
Arkell, Peter	Development officer	Native and low input grasses	Evaluation/agronomy and use/extension/management	
Bahnisch, Len	Senior lecturer	Native grasses	Evaluation/selection/agronomy and use/ecology/management	
Barclay, Ruth	District agronomist	Native and low input grasses	Extension/management/education	Many
Barlow, Tim	Botanist	Native and low input grasses	Survey	Many
Barnett, Guy	Scientific officer	Native grasses	Evaluation/selection/agronomy and use/ecology/management	
Barrett-Lennard, Phil	Development officer	Native and low input grasses	Extension/education	
Barton, Edwina	Industry development officer	Native and low input grasses	Management/conservation	Many
Bean, Judy	Grad. Dip. Nat. Res. Student	Native grasses	Ecology	Many
Beckers, Doug	Environmental officer	Native grasses	Ecology/extension/management/identification/conservation	
Bell, David	Botanist/supervisor of post graduate work	Native grasses	Ecology	
Bell, Richard	Lecturer	Native and low input grasses	Grassland rehabilitation/extension/education	
Bellairs, Sean		Native grasses	Evaluation/selection/agronomy and use/ecology/management	
Bennett, Don	Technical officer	Native and low input grasses	Agronomy and use	

Name	Organisation	Address	Phone number	Fax
Benson, John	Royal Botanic Gardens, Sydney	Mrs Macquarie Road Sydney NSW 2000	(02) 9231 8149	(02) 9251 7231
Berryman, Tim	University of Western Sydney	Faculty of Agriculture & Rural Development Richmond NSW 2753	(03) 5477 5172	
Bicknell, David	Agriculture Western Australia	10 Doney Street Narrogin WA 6312	(08) 9881 0222	(08) 9881 1950
Birch, Geoff	Selected Seeds	PO Box 16 Biloela QLD 4715	(07) 4992 1066	(07) 4992 1321
Bland, Ashley	ARIMCO Mining Pty Ltd	PO Box 1929 Mt Isa QLD 4825	(07) 4746 6447	
Booth, Nick	PISA/Combined Upper South East Soils Boards	Keith District Office PO Box 81 Keith SA 5267	(08) 8755 3166	(08) 8755 1686
Bowen, David	University of Queensland	Centre for Mined Land Rehabilitation Brisbane QLD 4072	(07) 3365 4738	(07) 3365 3452
Bowman, Alison	NSW Agriculture	Trangie Agricultural Research Centre PMB 19 Trangie NSW 2823	(02) 6888 7404	(02) 6888 7201
Brady, Nick	Newlands Coal	PO Box 21 Glendon QLD 4743	(07) 4940 5230	(07) 4940 5211
Bramwell, Mick	Department of Natural Resources and Environment	7 Service Street Bairnsdale VIC 3875	(03) 5152 0446	(03) 5152 0444
Brown, Rob		2 Howqua Court Vermont VIC 3133	(03) 9874 7462	(03) 9873 1853
Brunskill, Sue	Trust for Nature	RMB 1182 Beechworth Road Wooragee VIC 3747	(03) 5728 7285	(03) 5728 7285
Burns, Mark	HLA – Envirosciences	122 Parry Street Newcastle West NSW 2302	(02) 4926 2600	(02) 4926 4532
Burton, Wayne	Conservation and Land Management	Dempster Street Esperance WA 6450	(08) 9071 3733	
Bushell, John	Queensland Department of Primary Industries	PO Box 668 Mackay QLD 4740	(07) 4951 8724	(07) 4951 4509
Butler, Jack	Seed Testing Laboratory of Australia	PO Box 2031 Mansfield Delivery Centre QLD 4122	(07) 3849 2744	(07) 3849 2704
Cameron, Rod	BHP Australia Coal Pty Ltd	Saraji PMB Dysart QLD 4745	(07) 4941 2306	(07) 4958 1451
Carr, Steve	Agriculture Western Australia	3 Baron-Hay Court South Perth WA 6151	(08) 9368 3870	(08) 9474 2658
Carroll, Graham	Landholder	'Berkeley' Manildra NSW 2865	(02) 6364 5010	(02) 6364 5360

Name	Position	Area of interest	Categories	Species
Benson, John	Senior plant ecologist	Native grasses	Ecology/management/extension/identification/education/survey/grassland	
Berryman, Tim	Post graduate student	Native grasses		
Bicknell, David	Project officer	Native and low input grasses	Extension/education	
Birch, Geoff		Native grasses	Ecology/management/seed production/seed processing/marketing/commercial use	
Bland, Ashley		Native grasses	Evaluation/selection/agronomy and use/ecology/management	
Booth, Nick	Catchment agronomist	Native and low input grasses	Agronomy and use/extension/education/rehabilitation	
Bowen, David		Native grasses	Evaluation/selection/agronomy and use/ecology/management	
Bowman, Alison	Research agronomist	Native and low input grasses	Evaluation/agronomy and use/management/ecology/survey	Many
Brady, Nick	Environmental officer	Native grasses	Evaluation/selection/agronomy and use/ecology/management	
Bramwell, Mick	Development officer	Native and low input grasses	Management/conservation/grassland conservation	Many
Brown, Rob	Program manager	Native grasses	Management/seed production/project management	
Brunskill, Sue	Industry development officer	Native and low input grasses	Extension/identification	Many
Burns, Mark		Native grasses	Evaluation/selection/agronomy and use/ecology/management	
Burton, Wayne	Forester	Native grasses	Ecology/rehabilitation	
Bushell, John		Native grasses	Evaluation/agronomy and use/management	
Butler, Jack	Managing director	Native grasses	Seed testing/seed processing	
Cameron, Rod	Environmental officer	Native grasses	Evaluation/selection/agronomy and use/ecology/management	
Carr, Steve	Research officer	Native and low input grasses	Selection/evaluation/agronomy and use	
Carroll, Graham	Landholder	Native grasses	Seed production/seed grower	

Name	Organisation	Address	Phone number	Fax
Casson, Tess	Agriculture Western Australia	Great Southern Research Institute Nyabing Road Katanning WA 6317	(08) 9821 1755	(08) 9821 1127
Chamberlin, John	Queensland Department of Primary Industries	PO Box 13 Clermont QLD 4721	(07) 4983 1211	(07) 4983 2854
Chivers, Ian	Native Seeds	PO Box 133 Sandringham VIC 3191	018 104 715	(03) 9598 7895
Clark, Doug	University of New England	Department of Botany Armidale NSW 2351	(02) 6773 3713	(02) 6773 3283
Clark, Jane	Ravenswood Gold Mines	PO Box 5802 Townsville QLD 4810	(07) 4770 2166	(07) 4770 2185
Clark, Keith	Landholder	'Wyreela' Dalgety NSW 2628		
Clarke, Mike	Greening Australia	PO Box 1604 Darwin NT 0801	(08) 8981 1344	(08) 8981 1182
Cleary, Shaun	Department of Minerals and Energy	PO Box 257 Rockhampton QLD 4700	(07) 4931 4341	(07) 4934 1310
Clifton, Craig	Centre for Land Protection Research	22 Osborne Street Bendigo VIC 3550	(03) 5444 6777	(03) 5444 6721
Cochrane, Donald	Landholder	C/- Post Office Duranillin WA 6393	(08) 9863 1066	
Cole, Ian	Department of Land and Water Conservation	Cowra Research Centre Cowra NSW 2794	(02) 6342 1333	(02) 6342 4543
Cole, Jack	Landholder	'Neusa Vale' MS 591 Gympie QLD 4570	(07) 5486 7241	(07) 5486 7135
Connell, Marylin	Greening Australia	GPO Box 9868 Brisbane QLD 4001	(07) 3844 0211	(07) 3844 0727
Cook, Sid	Braithwaite IAMA	PO Box 74 Roma QLD 4455	(07) 4622 1422	(07) 4622 1753
Cowan, Don	Queensland Department of Primary Industries	PO Box 976 Charters Towers QLD 4820	(07) 4787 2155	(07) 4787 4998
Craigie, Vanessa	Department of Natural Resources and Environment	123 Brown Street Heidelberg VIC 3084	(03) 9450 8697	(03) 9450 8799
Crosthwaite, Jim	University of Melbourne	2/250 Victoria Parade East Melbourne VIC 3002	(03) 9412 4190	(03) 9412 4586
Curtis, David	Greening Australia	Greening Australia PO Box 1467 Armidale NSW 2350	(02) 6772 3248	(02) 6771 4094
Dalgelish, John	Landholder	'Pomeroy' Mummel via Goulburn NSW 2580	(02) 4844 3133	
Davidson, Phil	University of Queensland	Brisbane QLD 4072	(07) 3365 2030	(07) 3365 1177

Name	Position	Area of Interest	Categories	Species
Casson, Tess	Research officer	Low input grasses	Management/animal nutrition	
Chamberlin, John		Native grasses	Evaluation/selection/agronomy and use/ecology	
Chivers, Ian	Agronomist	Native grasses	Selection/agronomy and use/seed production/ commercial use	Microlaena/many
Clark, Doug	Technical officer	Native grasses	Selection/evaluation/ commercialisation/ecology/ management	Many
Clark, Jane	Environmental assistant	Native grasses	Evaluation/selection/agronomy and use/ecology/ management	
Clark, Keith	Landholder	Native grasses	Cooperating landholder	
Clarke, Mike	Industry development officer	Native grasses	Seed processing/grassland revegetation	Many
Cleary, Shaun	Environmental officer	Native grasses	Evaluation/selection/agronomy and use/ecology/ management	
Clifton, Craig	Research scientist	Native and low input grasses	Selection/evaluation	Many
Cochrane, Donald	Landholder	Native and low input grasses	Agronomy and use/rehabilitation	Many
Cole, Ian	Manager, Plant Materials Section	Native and low input grasses	Seed production/selection	Many
Cole, Jack	Landholder	Native grasses	Agronomy and use	
Connell, Marylin		Native grasses	Evaluation/ecology/management/ grassland revegetation/rehabilitation	
Cook, Sid		Native grasses	Evaluation/agronomy and use/ marketing/ commercial use	
Cowan, Don		Native grasses	Evaluation/selection/agronomy and use/ecology/ management	
Craigie, Vanessa	GERGO coordinator	Native and low input grasses	Extension/education/conservation	Many
Crosthwaite, Jim	Research scientist	Native grasses	Economics	Many
Curtis, David	Regional manager	Native grasses	Extension/identification/education/conservation/ rehabilitation	
Dalgelish, John	Landholder	Native grasses	Cooperating landholder	
Davidson, Phil		Native grasses	Evaluation/selection/agronomy and use/ecology/ management	

Name	Organisation	Address	Phone number	Fax
Davis, Nancy	Harvest Seeds	325 McCarrs Creek Road Terrey Hills NSW 2084	(02) 9450 2690	(02) 9450 2750
Dear, Brian	NSW Agriculture	Agricultural Research Institute PMB Wagga Wagga NSW 2650	(02) 6938 1856	(02) 6938 1809
Dickson, Katrina	Liverpool Plains Land Management Committee	PO Box 546 Gunnedah NSW 2380	(02) 6742 9256	(02) 6742 4018
Diez, Shirley	Department of Natural Resources and Environment	PO Box 401 Bendigo VIC 3550	(03) 5444 6666	(03) 5441 2757
Dixon, Kingsley	Kings Park and Botanic Gardens	Kings Park Road Perth WA 6000	(08) 9480 3641	
Dowling, Peter	NSW Agriculture	Agricultural Research and Veterinary Centre Forest Road Orange NSW 2800	(02) 6391 3814	(02) 6391 3899
Driver, Martin	Greening Australia	PO Box 1010 Suite 1 272A George Street Deniliquin NSW 2710	(03) 5881 3429	
Dunford, Mark	ACT Parks and Conservation Service	PO Box 1119 Tuggeranong ACT 2901	(02) 6207 2125	(02) 6207 2122
Earl, Judi	University of New England	Department of Botany Armidale NSW 2351	(02) 6773 3940	(02) 6773 3283
Edwards, Robyn	Trust for Nature	Punt Road Swan Reach VIC 3903	(03) 5156 4486	(03) 5156 4486
Elliot, Eric	NSW Agriculture	PO Box 369 Forbes NSW 2871	(02) 6852 2022	(02) 6852 2047
Ellis, Hugh	Lachlan Valley Seeds Pty Ltd	'Hazelbrook' Forbes NSW 2871	(02) 6857 1167	
Esser, David	Blair Athol Coal Project	PO Box 177 Clermont QLD 4721	(07) 4983 4328	(07) 4983 4477
Fairbrother, Peter	Primary Industries South Australia, field crops	Flaxley Agricultural Centre PO Box 1571 Flaxley SA 5153	(08) 8391 7148	(08) 8388 8455
Farrar, Michael	ML Farrar Pty Ltd	PO Box 1046 Bomaderry NSW 2541	(02) 4421 7966	(02) 4421 0051
Fisher, John	Department of Natural Resources and Environment	PO Box 471 Portland VIC 3305	(03) 5523 3232	(03) 5523 5312
Fletcher, Gil	Land Reclamation Services	PO Box 527 Emerald QLD 4720	(07) 4982 2964	(07) 4982 2628
Flower, Kirsty	South Australian Research and Development	Kybybolite Research Centre PO Box 2 Kybybolite SA 5262	(08) 8764 2002	(08) 8764 2115

Name	Position	Area of Interest	Categories	Species
Davis, Nancy		Native grasses	Evaluation/agronomy and use/seed production/ seed processing/marketing	
Dear, Brian	Research scientist	Low input grasses	Management	Many
Dickson, Katrina	Executive officer	Native grasses	Management/extension/education/ conservation grassland	
Diez, Shirley	Research/development officer	Native and low input grasses	Management/grasslands conservation/education	Many
Dixon, Kingsley	Botanist	Native grasses	Extension/identification/rehabilitation/revegetation	
Dowling, Peter	Research scientist	Native and low input grasses	Management/agronomy	Microlaena/Danthonia
Driver, Martin	Industry development officer	Native and low input grasses	Extension/identification/management	Many
Dunford, Mark	Research scientist	Native grasses	Ecology/management/survey/conservation/ rehabilitation	
Earl, Judi	PhD student	Native grasses	Ecology/management	Many
Edwards, Robyn	Industry development officer	Native and low input grasses	Conservation/grasslands/extension	Many
Elliot, Eric	Seed production agronomist	Native grasses	Seed production research/extension management	
Ellis, Hugh	Commercial seedgrower	Native grasses	Seed grower/seed processing	
Esser, David	Environmental officer	Native grasses	Evaluation/selection/agronomy and use/ecology/ management	
Fairbrother, Peter	District agronomist	Native grasses	Extension/education/survey/grassland revegetation	Many
Farrar, Michael		Native grasses	Marketing	
Fisher, John	Research/development officer	Native and low input grasses	Conservation/management	Themeda/Danthonia
Fletcher, Gil		Native grasses	Evaluation/selection/agronomy and use/ecology/ management	
Flower, Kirsty	Research officer	Low input grasses	Selection/evaluation/agronomy and use/ management	

Name	Organisation	Address	Phone number	Fax
Foot, Peter	Consolidated Rutile Ltd	PO Box 47 Dunwich QLD 4183	(07) 3409 9033	(07) 3409 9254
Ford, Frank	Callide Coalfields Pty Ltd	PO Box 144 Biloela QLD 4715	(07) 4990 1624	(07) 4990 1687
Foreman, Paul	Department of Natural Resources and Environment	PO Box 733 Strathfieldsaye VIC 3551	(03) 5444 6676	(03) 5444 6688
Fortune, Nicola	Ecosystems Dynamics	Australian National University Canberra ACT 2601	(02) 6294 4020	
Francis, David	Greening Australia	GPO Box 9868 Brisbane QLD 4001	(07) 3844 0211	(07) 3844 0727
Friend, Doug	Livestock Production Branch, DPIF	PO Box 46 Kings Meadows TAS 7249	(03) 6336 5262	(03) 6336 5230
Fulton, Ian	Nabalco Pty Ltd	PO Box 21 Nhullunbuy NT 0881	(08) 8987 5505	(08) 8987 5551
Gallagher, Peter	Manilla-Hall Creek Landcare Group	'Tarana' Yarrammanbully Road Attunga NSW 2345	(02) 6786 1524	
Garden, Denys	NSW Agriculture	Agronomy Research Unit PO Box 1600 Canberra ACT 2601	(02) 6246 5548	(02) 6246 5255
George, Richard	Agriculture Western Australia	PO Box 1231 Bunbury WA 6231	(08) 9725 5289	(08) 9725 4136
Gleeson, Kerri	IAMA Ltd	45 Prime Drive Seven Hills NSW 2147	(02) 9838 9188	(02) 9624 6039
Glencross, Ron	Agriculture Western Australia	3 Baron-Hay Court South Perth WA 6151	(08) 9368 3290	(08) 9474 2658
Goshnick, Darryl	Queensland Department of Primary Industries	PO Box 631 Indooroopilly QLD 4068		
Graham, Phil	NSW Agriculture	254 Comur Street Yass NSW 2582	(02) 6226 3353	
Gramshaw, David	Centre for Integrated Resource Management	University of Queensland Brisbane QLD 4072	(07) 3365 6879	(07) 3365 2965
Greathead, Ken	Agriculture Western Australia	444 Albany Highway Albany WA 6330	(08) 9892 8484	(08) 9841 2707
Green, Carol	Department of Natural Resources and Environment	100 Windermere Road Lara VIC 3212	(03) 5282 1584	(03) 5282 3364
Greenway, Grant	Heritage Seeds	7-9 McDonalds Lane Mulgrave VIC 3170	(03) 9561 9222	(03) 9561 9333
Gresser, Arch	Wrightson Seeds	PO Box 3 Cowra NSW 2794	(02) 6342 1812	(02) 6342 1812
Groves, Richard	CSIRO	Division of Plant Industry PO Box 1600 Canberra ACT 2601	(02) 6246 5109	(02) 6246 5255

Name	Position	Area of Interest	Categories	Species
Foot, Peter	Senior environmental officer	Native grasses	Evaluation/selection/agronomy and use/ecology/management	
Ford, Frank	Senior environmental officer	Native grasses	Evaluation/selection/agronomy and use/ecology/management	
Foreman, Paul	Research scientist	Native grasses	Grasslands/management	Many
Fortune, Nicola		Native and low input grasses		
Francis, David		Native grasses	Evaluation/ecology/management/grassland revegetation/rehabilitation	
Friend, Doug	Research scientist	Native grasses	Management/production	Many
Fulton, Ian	Rehabilitation officer	Native grasses	Evaluation/selection/agronomy and use/ecology/management	
Gallagher, Peter	Chairman	Native grasses	Cooperating landholder	
Garden, Denys	Research agronomist	Native grasses	Evaluation/agronomy and use/ ecology/management	Many
George, Richard	Hydrogeologist	Native and low input grasses	Rehabilitation/grassland revegetation/agronomy and use	
Gleeson, Kerri		Native grasses	Evaluation/agronomy and use/ seed production/seed processing/marketing	
Glencross, Ron	Senior research officer	Native and low input grasses	Extension/education/plant nutrition/agronomy and use	
Goshnick, Darryl	Senior seeds officer	Native grasses	Evaluation/selection/agronomy and use/ecology/management	
Graham, Phil	Industry development officer	Native grasses	Management	Many
Gramshaw, David		Native grasses	Ecology/project management/grassland revegetation	
Greathead, Ken	Senior research officer	Low input grasses	Evaluation/management/agronomy and use/animal production	
Green, Carol	Land For Wildlife officer	Native and low input grasses	Revegetation/management/ grasslands conservation	Many
Greenway, Grant	Marketing/production	Native and low input grasses	Seed production	Danthonia
Gresser, Arch	Seed production advisor	Native grasses	Seed production/seed processing/marketing/commercial	Microlaena/Many
Groves, Richard	Research scientist	Native grasses	Selection/agronomy/seed production	Themeda/Danthonia

Name	Organisation	Address	Phone number	Fax
Guise, Neil	Agriculture Western Australia	Becher Street Harvey WA 6220	(08) 9729 1507	(08) 9729 1673
Hacker, Brian	CSIRO	Division of Tropical Crops and Pastures 306 Carmody Road St Lucia QLD 4067	(07) 3377 0210	(07) 3371 3946
Hacker, Ron	NSW Agriculture	37 Carrington Road Dubbo NSW 2830	(02) 6881 1270	(02) 6881 1295
Hannam, Warren	Moree Seed Graders	PO Box 748 Moree NSW 2400	(02) 6752 2300	(02) 6752 4957
Harrison, Peter	Landholder	PO Box 40493 Casuarina NT 0811	(08) 8948 1894	(08) 8948 1894
Hawley, Kerry	Agriculture Western Australia	Rose Street Manjimup WA 6528	(08) 9771 1299	(08) 9771 2544
Heard, Bindy	University of New England	Botany Department Armidale NSW 2351	(02) 6773 2013	(02) 6773 3283
Higgins, Ian	Department of Natural Resources and Environment	Bendigo VIC 3550	(03) 5444 6791	(03) 5441 2757
Hill, Lachlan	Grass Seeds Australia	PO Box 12 Darling Heights QLD 4350	(07) 4632 6888	
Hills, Amanda	Department of Natural Resources and Environment	PO Box 103 Geelong VIC 3220	(03) 5226 4953	(03) 5226 4725
Hinz, Randal	Tarong Coal	PO Box 36 Nanango QLD 4615	(07) 4160 7262	(07) 4160 7208
Hocking, Colin	Department of Environmental Management	Victoria University of Technology PO Box 14428 MMC Melbourne VIC 3000	(03) 9365 2322	(03) 9365 2465
Hogan, Elvyne	Trust for Nature	PO Box 65 Bendigo VIC 3550	(03) 5435 3344	(03) 5435 3344
Horn, Peter	University of Queensland	Centre for Mined Land Rehabilitation Brisbane QLD 4072	(07) 3365 3706	(07) 3365 3452
Hoy, Neil	Department of Minerals and Energy	PO Box 257 Rockhampton QLD 4700	(07) 4931 4341	(07) 4931 4310
Hulme, Pat	Quambone Road Landcare	Group PO Box 130 Warren NSW 2824	(02) 6847 3367	(02) 6847 3367
Huth, Reg	Central Seeds	PO Box 66 Carcow QLD 4719	(07) 4993 7141	(07) 4993 7117
Huxtable, Charles	Department of Conservation and Land Management	Scone Research Service Centre PO Box 283 Scone NSW 2337	(02) 6545 1666	(02) 6545 2520
Ingeme, Yvonne	Department of Natural Resources and Environment	17 Thompson Street Hamilton VIC 3300	(03) 5572 3033	(03) 5572 5215
Jackson, Janet	School of Science, Ballarat University	PO Box 663 Ballarat VIC 3353	(03) 5327 9000	(03) 5333 9545

Name	Position	Area of interest	Categories	Species
Guise, Neil	Project officer	Native and low input grasses	Extension/education	
Hacker, Brian	Research officer	Native grasses	Selection/evaluation/agronomy and use/ecology	
Hacker, Ron	Program leader	Low input grasses	Management	Many
Hannam, Warren		Native grasses	Evaluation/agronomy and use/seed production/seed processing/marketing	
Harrison, Peter		Native grasses	Seed production research/seed processing	
Hawley, Kerry	District leader	Low input grasses	Extension/education/rehabilitation/ecology	
Heard, Bindy	Honours student	Native grasses	Evaluation/ecology/management/commercial use	
Higgins, Ian	Industry development officer	Native and low input grasses	Seed collection/processing	Many
Hill, Lachlan		Native grasses	Seed production/seed processing/marketing/commercial production	
Hills, Amanda	Flora and fauna planner	Native and low input grasses	Management/grasslands conservation	Many
Hinz, Randal	Senior environmental officer	Native grasses	Evaluation/selection/agronomy and use/ecology/management	
Hocking, Colin	Senior lecturer	Native grasses	Ecology/conservation/grassland revegetation/rehabilitation	Themeda/many
Hogan, Elvyne	Research/industry development officer	Native and low input grasses	Extension/education/management	Many
Horn, Peter		Native grasses	Evaluation/selection/agronomy and use/ecology/management	
Hoy, Neil	Environmental officer	Native grasses	Evaluation/selection/agronomy and use/ecology/management/ rehabilitation	
Hulme, Pat	Landholder	Native and low input grasses	Cooperating landholder	
Huth, Reg		Native grasses	Seed production/seed processing/marketing/commercial use	
Huxtable, Charles	Resource officer	Native grasses	Selection/evaluation/management/seed processing/rehabilitation	Many
Ingeme, Yvonne	Research scientist	Native and low input grasses	Revegetation/management/agronomy	Many
Jackson, Janet	Research/industry development officer	Native grasses	Grasslands conservation/evaluation/research	Many

Name	Organisation	Address	Phone number	Fax
Jacobs, Surrey	Royal Botanic Gardens, Sydney	Mrs Macquarie Road Sydney NSW 2000	(02) 9231 8135	(02) 9251 7231
James, Max	Department of Natural Resources and Environment	71 Hotham Street Traralgon VIC 3844	(03) 5172 2183	(03) 5172 2111
Jennings, Barbara	Kalgoorlie Consolidated Gold Mines	PMB 27 Kalgoorlie WA 6430	(08) 9022 1073	(08) 9022 1075
Jensen, Troy	Grass Seeds Australia	PO Box 132 Darling Height QLD 4350	(07) 4632 6888	
Jia Xin Zhou, Jenny	Department of Minerals and Energy	61 Mary Street Brisbane QLD 4000	(07) 3224 7811	(07) 3237 1069
Johnston, Bill	Soil Conservation Research Centre	PO Box 5146 South Wagga Wagga NSW 2650	(02) 6931 1777	(02) 6931 4184
Johnston, Glen	Department of Natural Resources and Environment	1 McKoy Street Wodonga VIC 3690	(02) 6055 6111	(02) 6055 6100
Johnston, Peter	Queensland Department of Primary Industries	PO Box 282 Charleville QLD 4470	(07) 4654 4200	(07) 4654 4235
Jones, Christine	University of New England	Botany Department Armidale NSW 2351	(02) 6773 2924	(02) 6773 3283
Kahn, Lewis	Department of Land and Water Conservation	PO Box 199A Armidale NSW 2350	(02) 6772 5488	(02) 6772 8782
Kelly, Peter	NSW Agriculture	Agricultural Research Station PMB 19 Trangie NSW 2823	(02) 6888 7404	(02) 6888 7201
Kemp, David	NSW Agriculture	Agricultural Research and Veterinary Centre Orange NSW 2800	(02) 6391 3800	(02) 6363 8356
Keys, Michael	NSW Agriculture	Queanbeyan NSW 2620	(02) 6297 1861	(02) 6299 4215
Kingdom, Bevan	Agriculture Western Australia	1 Queen Street Busselton WA 6280	(08) 9752 1688	(08) 9752 3877
Knight, Leonie	Department of Natural Resources and Environment	9 Pearce Street Heyfield VIC 3858		
Lamb, David	University of Queensland	Brisbane QLD 4072	(07) 3365 2045	(07) 3365 1699
Lamont, Byron	Curtin University	Hayman Road Bentley WA 6102	(08) 9351 7398	
Langford, Col	NSW Agriculture	PO Box 389 Goulburn NSW 2580	(02) 4823 0626	(02) 4823 0714
Law, Mary Ann	AgriTech Laboratory Services	PO Box 549 Toowoomba QLD 4350	(07) 4638 4322	(07) 4638 4271
Loch, Don	Department of Primary Industries	PO Box 395 Gympie QLD 4570	(07) 5482 1522	(07) 5482 1529
Lodder, Mark	ACT Government, Department of Planning and Environment	PO Box 1908 Canberra ACT 2601	(02) 6207 1923	(02) 6207 1925

Name	Position	Area of Interest	Categories	Species
Jacobs, Surrey	Senior research scientist	Native grasses	Agronomy and use/ecology/management/extension	
James, Max	Research/development officer	Native and low input grasses	Conservation/management	Many
Jennings, Barbara	Horticulturist	Native grasses	Evaluation/selection/agronomy and use/ecology/management	
Jensen, Troy		Native grasses	Seed processing	
Jia Xin Zhou, Jenny	Principal environmental officer	Native grasses	Evaluation/selection/agronomy and use/ecology/management	
Johnston, Bill	Research scientist	Native grasses	Selection/evaluation	Many
Johnston, Glen	Flora, fauna and fisheries officer	Native and low input grasses	Conservation/revegetation	Many
Johnston, Peter		Native grasses	Evaluation/selection/agronomy and use/ecology/management	
Jones, Christine	Research scientist	Native grasses	Ecology/management	Microlaena/many
Kahn, Lewis	Rangelands officer	Native and low input grasses	Agronomy and use/management/extension/identification/education	
Kelly, Peter	Technical officer	Native grasses	Evaluation/selection/agronomy and use/ecology/management	
Kemp, David	Agronomist/research	Native and low input grasses	Management/extension/education	Many
Keys, Michael	Agronomist	Native and low input grasses	Management	Many
Kingdom, Bevan	Development officer	Native and low input grasses	Extension/education/management	
Knight, Leonie	Development officer	Native and low input grasses	Conservation/management	Many
Lamb, David		Native grasses	Evaluation/selection/agronomy and use/ecology/management	
Lamont, Byron	Lecturer	Native grasses	Extension/education/rehabilitation/ecology	
Langford, Col	Industry development officer	Native grasses	Management/extension	Many
Law, Mary Ann		Native grasses	Seed testing/seed processing	
Loch, Don	Principal scientist	Native and low input grasses	Seed production/seed processing	Many
Lodder, Mark		Native and low input grasses	Commercial use	

Name	Organisation	Address	Phone number	Fax
Lodge, Greg	NSW Agriculture	Tamworth Centre for Crop Improvement RMB 944 Tamworth NSW 2340	(02) 6763 1100	(02) 6763 1222
Loneragan, Bill	University of Western Australia	Botany Department Hackett Drive Nedlands WA 6009	(08) 9380 2216	(08) 9380 1001
Lowein, Geoff	NSW Agriculture	Research and Advisory Station PMB Glen Innes NSW 2370	(02) 6730 1900	(02) 6730 1999
Lumb, John	Australian Nature Conservation Agency	GPO Box 636 Canberra ACT 2601	(02) 6250 0342	(02) 6250 0286
Lundburg, Rachel		Flat 3 149 Ryan Street Hill End QLD 4101		
Lynch, Helen	Greening Australia	Viola Station Julia Creek QLD 4823	(07) 4746 8720	(07) 4746 8797
Lyons, Cathy	James Cook University	Department of Botany and Tropical Agriculture Townsville QLD 4811	(07) 4781 5769	(07) 4725 1570
Mann, Gavin	Institute for Integrated Agricultural Development	RMB 1145 Chiltern Valley Road Rutherglen VIC 3685	(02) 6030 4500	(02) 6030 4579
Marriot, Neil	Trust for Nature	PO Box 107 Stawell VIC 3380	(03) 5356 2404	(03) 5356 2404
Marris, Julie	University of Queensland	Centre for Mined Land Rehabilitation Brisbane QLD 4072	(07) 3365 1176	(07) 3365 3452
Marshall, Frank	Victoria River Conservation	PO Box 1544 Katherine NT 0851	(08) 8972 2349	(08) 8972 2350
McMullen, Geoff	Agriculture Western Australia	PO Box 1231 Bunbury WA 6231	(08) 9725 5271	(08) 9725 4136
McCormick, Lester	NSW Agriculture	Manilla Advisory Office PO Box 71 Manilla NSW 2346	(02) 6785 1790	(02) 6785 2176
McDonald, Warren	NSW Agriculture	Agricultural Research Centre RMB 944 Tamworth NSW 2340	(02) 6763 1255	(02) 6763 1222
McDonald, Jim	Liverpool Plains Land Management Committee	PO Box 546 Gunnedah NSW 2380	(02) 6742 9256	(02) 6742 4018
McFarlane, Terry	Conservation and Land Management	North Boyanup Road Bunbury WA 6230	(08) 9725 4300	(08) 9725 4900
McGahan, Eugene	Grass Seeds Australia	PO Box 132 Darling Heights QLD 4350	(07) 4632 6888	

Name	Position	Area of interest	Categories	Species
Lodge, Greg	Senior research scientist	Native and low input grasses	Agronomy/use/extension/management	Danthonia/many
Loneragan, Bill	Botanist/supervisor of postgraduate work	Native grasses	Ecology	
Lowein, Geoff	District agronomist	Native and low input grasses	Agronomy and use/extension/management	
Lumb, John	Project leader	Native grasses	Ecology/survey	Many
Lundburg, Rachel		Native grasses		
Lynch, Helen		Native grasses	Evaluation/ecology/management/ grassland revegetation/ rehabilitation	
Lyons, Cathy		Native grasses	Evaluation/selection/agronomy and use/ecology/ management	
Mann, Gavin	Technical officer	Native and low input grasses	Selection/evaluation/education/management/ establishment	Many
Marriot, Neil	Botanist	Native and low input grasses	Survey	Many
Marris, Julie	Scientific administrator	Native grasses	Evaluation/selection/agronomy and use/ecology/ management	
Marshall, Frank		Native grasses	Agronomy and use	
McMullen, Geoff	Senior technical officer	Native and low input grasses	Agronomy and use	
McCormick, Lester	District agronomist	Native and low input grasses	Agronomy and use/extension/identification/management/education	
McDonald, Warren	Program leader (pastures)	Native and low input grasses	Extension/management/education	Many
McDonald, Jim	Chairperson	Native grasses	Management/extension/identification/education/ conservation/grassland	
McFarlane, Terry	Forester	Native grasses	Ecology/rehabilitation	
McGahan, Eugene	Seed production	Native grasses	Agronomy and use/seed production/ seed processing/marketing	

Name	Organisation	Address	Phone number	Fax
McGann, John	Landholder	C/- Post Office Prowse Road Balingup WA 6253	(08) 9764 1004	
McGowen, Ian	NSW Agriculture	Locked Bag 21 Orange NSW 2800	(02) 6391 3195	
McGregor, P.	Landholder	'Burenda' Augathella QLD 4477	(07) 4654 5399	(07) 4654 5308
McIntyre, Murray	Department of Natural Resources and Environment	State Offices Ballarat VIC 3350	(03) 5333 6783	(03) 5333 6713
McIntyre, Sue	CSIRO	Division of Tropical Crops and Pastures 306 Carmody Road St Lucia QLD 4067	(07) 3377 0391	(07) 3377 0411
Merchin, Steve	Curragh Queensland Mining Ltd	PMB Blackwater QLD 4717	(07) 4986 9314	(07) 4986 9326
Middleton, Bill	Trust for Nature	4 Campbell Street Barwon Heads VIC 3227	(03) 5254 2332	(03) 5254 2332
Millar, Jo	Charles Sturt University	PO Box 789 Albury NSW 2640	(02) 6051 9883	(02) 6041 8897
Milsom, Jenny	Queensland Department of Primary Industries	PO Box 519 Longreach QLD 4730	(07) 4658 4447	(07) 4658 4433
Mitchell, Meredith	Institute for Integrated Agricultural Development	RMB 1145 Chiltern Valley Road Rutherglen VIC 3685	(02) 6030 4500	(02) 6030 4600
Mizzeni, Robert	W. Mizzeni and Sons	RMB 336 Creswick VIC 3363	(03) 5345 6293	
Moncton, Brendan	BHP Australia Coal Pty Ltd	Goonyella/Riverside Moranbah QLD 4744	(07) 4941 3216	(07) 4941 3369
Morris, Samantha	Greening Australia	GPO Box 9868 Brisbane QLD 4001	(07) 3844 0211	(07) 3844 0727
Mullaly, John	Queensland Department of Primary Industries	PO Box 118 Gayndah QLD 4625	(07) 4161 1602	(07) 4161 1954
Mulligan, David	University of Queensland	Centre for Mined Land Rehabilitation Brisbane QLD 4072	(07) 3365 2954	(07) 3365 3452
Murphy, Michelle	University of New England	Botany Department Armidale NSW 2351	(02) 6773 3713	(02) 6773 3283
Myers, Bob	Native Grass Resource Group	PO Box 250 Birdwood SA 5234	(08) 8289 2916	
Neal, Robert and Belinda	Landholder	'Lockerbie' Condobolin NSW 2877	(02) 6896 2917	
Newton, David	Woodward Clyde	49 Park Road Milton QLD 4063	(07) 3364 7444	(07) 3364 7477
Nichols, Gregg	Park Forage	PO Box 34 Wamuran QLD 4512	(07) 5496 6627	(07) 5496 6866

Name	Position	Area of interest	Categories	Species
McGann, John	Landholder	Native grasses	Agronomy and use/rehabilitation	
McGowen, Ian	Research officer resource information	Native grasses	Survey	
McGregor, P.		Native grasses	Agronomy and use	
McIntyre, Murray	Research/development officer	Native and low input grasses		Chloris/Adams bent grass
McIntyre, Sue	Research officer	Native grasses		
Merchin, Steve	Environmental officer	Native grasses		
Middleton, Bill		Native grasses		Many
Millar, Jo	Research/industry development officer	Native and low input grasses		Many
Milsom, Jenny	Research officer	Native grasses		
Mitchell, Meredith	Research scientist	Native and low input grasses		Many
Mizzeni, Robert	Seed grower	Native and low input grasses		Many
Moncton, Brendan	Environmental officer	Native grasses		
Morris, Samantha		Native grasses		
Mullaly, John		Native grasses		
Mulligan, David	Assistant director	Native grasses		
Murphy, Michelle	PhD student	Native grasses		Many/Elymus
Myers, Bob	Industry development officer	Native grasses		Many
Neal, Robert and Belinda		Native grasses		
Newton, David	Environmental soil scientist	Native grasses		Many
Nichols, Gregg	Environmental landscape engineer	Native and low input grasses		

Name	Organisation	Address	Phone number	Fax
Nile, David	Conservation and Land Management	147 Wittenoom Street Collie WA 6225	(08) 9734 1988	(08) 9734 4539
Noelker, Frank	Trust for Nature	PO Box 37 Rainbow VIC 3424	(03) 5391 8228	(03) 5391 8228
Nolan, Mark	Reice Gold Project	PO Box 51 Lyndhurst NSW 2797	(02) 6367 5111	
O'Sullivan, Wayne	Conservation and Land Management	Hough Street Narrogin WA 6312	(08) 9881 1113	(08) 9881 3297
Odie, Neville	Landholder	RMB 435 Snake Valley VIC 3351		
Orr, David	Queensland Department of Primary Industries	PO Box 5545 Rockhampton MC QLD 4702	(07) 4936 0134	(07) 4936 1034
Owen, Richard	Trust for Nature	Gippsland VIC	(03) 5156 3200	
Painter, Karen	University of New England	Department of Botany Armidale NSW 2351	(02) 6772 3013	(02) 6773 3283
Patten, Paul	Wrightson Seeds (Aust) Pty Ltd	PO Box 357 Seven Hills NSW 2147	(02) 9674 6666	(02) 9674 6257
Pearce, Andrew	Mt Isa Mines	PMB Mt Isa QLD 4825	(07) 4744 2186	(07) 4744 3310
Pengelly, Bruce	CSIRO	Division of Tropical Crops and Pastures 306 Carmody Road St Lucia QLD 4067	(07) 3374 0348	(07) 3371 3946
Plumber, Julie	University of Western Australia	Horticulture Department Hackett Drive Nedlands WA 6009	(08) 9480 3641	(08) 9380 1001
Radloff, Bradley	University of Central Queensland	Primary Industries Research Centre Rockhampton QLD 4702	(07) 4930 9770	(07) 4930 9255
Rankin, Greg	Landholder	RMB 2020 Mitiamo VIC 3573	(03) 5486 8223	
Reeves, Anne	National Parks Association of NSW	PO Box A96 Sydney South NSW 2000	(02) 9233 4660	(02) 9233 4880
Reid, Bob	TIAR, DPIF	PO Box 46 Kings Meadows TAS 7249	(03) 6336 5449	(03) 6336 5230
Ritchis, Paul	Kidston Gold Mines Ltd	PO Box 7020 Cairns QLD 4870	(07) 4062 4279	(07) 4062 4120
Robinson, Doug	Department of Natural Resources and Environment	Benalla VIC 3672	(03) 5761 1611	(03) 5761 1628
Roe, Peter	BHP Australia Coal	GPO Box 1389 Brisbane QLD 4001	(07) 3226 0754	(07) 3229 2333
Rose, Ben	Agriculture Western Australia	Rose Street Manjimup WA 6528	(08) 9771 1299	(08) 9771 2544
Ross, James	Victorian National Parks Association	10 Parliament Place Melbourne VIC 3002	(03) 9650 8296	(03) 9654 6843

Name	Position	Area of Interest	Categories	Species
Nile, David	Forester	Native and low input grasses	Commercial use	
Noelker, Frank		Native grasses	Conservation	Many
Nolan, Mark	Research scientist	Native grasses	Grassland revegetation	Themeda/Stipa/ Microlaena/Danthonia
O'Sullivan, Wayne	Forester	Native and low input grasses	Commercial use/agronomy and use	
Odie, Neville	Landholder	Low input grasses	Landholder	Many
Orr, David	Research officer	Native grasses	Agronomy and use/ ecology/management/ seed production/extension	
Owen , Richard	Botanist	Native and low input grasses	Survey/grasslands conservation	Many
Painter, Karen	Grad. Dip. Sci. student	Native grasses		Many
Patten, Paul	Sales and research	Native grasses	Seed processing/ marketing/commercial use/ commercial production	Many
Pearce, Andrew	Environmental scientist	Native grasses	Evaluation/selection/agronomy and use/ecology/ management	
Pengelly, Bruce	Research officer	Native grasses	Evaluation/agronomy and use/seed production/ ecology	
Plumber, Julie	Floriculturist	Native grasses	Commercial use	
Radloff, Bradley		Native grasses	Evaluation/selection/agronomy and use/ecology/ management	
Rankin, Greg	Landholder	Low input grasses	Landholder	Many
Reeves, Anne	President	Native grasses	Ecology/conservation/grassland revegetation/ rehabilitation	
Reid, Bob	Agronomist/research	Native and low input grasses	Seed collection/production/agronomy and use/ ecology/management	Many
Ritchis, Paul	Environmental officer	Native grasses	Evaluation/selection/agronomy and use/ecology/ management	
Robinson, Doug	Biological consultant	Native and low input grasses		Many
Roe, Peter	Manager environmental services	Native grasses	Selection/evaluation/management/revegetation/ rehabilitation	
Rose, Ben	Project officer – Landcare	Native and low input grasses	Rehabilitation/ecology	
Ross, James	Grassy Ecosystems Reference Group	Native grasses	Ecology/conservation	Many

Name	Organisation	Address	Phone number	Fax
Rue, Simon		2 Walker Street Alice Springs NT 0871		
Ryan, Jim	'Driscoll's Hill'	Cooma NSW 2630	(02) 6452 3505	
Sanford, Paul	Agriculture Western Australia	444 Albany Highway Albany WA 6330	(08) 9892 8475	(08) 9841 2707
Saunders, Carmen	Agriculture Western Australia	Esperance Agriculture Centre PMB 50 Melijianup Esperance WA 6450	(08) 9076 1333	(08) 9076 1227
Scattini, Walter		45/72 Latimer Tce Kelvin Grove QLD 4059	(07) 3356 0863	(07) 3356 0863
Scholtz, Glen	Department of Land and Water Conservation	Lachlan Street Hay NSW 2711	(02) 6993 1306	(02) 6993 1135
Semple, Bill	Department of Land and Water Conservation	PO Box 53 Orange NSW 2800	(02) 6363 8301	
Sharp, Sarah	ACT Parks and Conservation Service	PO Box 1119 Tuggeranong ACT 2901	(02) 6207 2125	(02) 6207 2122
Shepherd, Bob	Queensland Department of Primary Industries	PO Box 976 Charters Towers QLD 4820	(07) 4787 2155	(07) 4787 4998
Shimmen, Ian	Bushland Flora	PO Box 312 Mt Evelyn VIC 3796	(03) 9736 4364	(03) 9729 6212
Silcock, Richard	Queensland Department of Primary Industries	PO Box 102 Toowoomba QLD 4350	(07) 4631 4263	(07) 4634 7421
Simpson, Peter	NSW Agriculture	PO Box 389 Goulburn NSW 2580	(02) 4823 0616	(02) 4823 0714
Sinclair, Donald	Selected Seeds Pty Ltd	PO Box 116 Billoela QLD 4715	(07) 4992 1066	(07) 4992 1231
Smith, Tony	Agriculture Western Australia	PO Box 1231 Bunbury WA 6231	(08) 9725 5295	(08) 9725 4136
Sonogan, Henry	Landholder	Basin Road Buchan VIC 3885	(03) 5155 9290	(03) 5155 9290
Stafford, John	Landholder/contractor	Main Road Lenswood SA 5240	(08) 8389 8347	
Statham, Paul	Collinsville Coal Company	PO Box 60 Collinsville QLD 4804	(07) 4785 4307	(07) 4785 4420
Stephens, Bruce	Alliance Seeds	23 London Drive Bayswater VIC 3153		
Taylor, Ian	Western Plains Flora	8 McGeorge Road Gisborne VIC 3437	(03) 5428 2738	(03) 5428 2900
Tengrove, Mark	Geelong Indigenous Nursery	45 Clarence Street Geelong West VIC 3218	(03) 5229 8087	
Thomas, Clive	Landholder	PO Box 431 Forbes NSW 2871	(02) 6851 1044	

Name	Position	Area of Interest	Categories	Species
Rue, Simon		Native grasses	Seed processing	
Ryan, Jim	Landholder	Native and low input grasses	Landholder	Many
Sanford, Paul	Senior research officer	Low input grasses	Evaluation/management/agronomy and use	
Saunders, Carmen	Research officer	Native and low input grasses	Evaluation/agronomy and use/management/extension/education	
Scattini, Walter	Research officer	Native grasses	Selection/evaluation/agronomy and use/management/seed production	
Scholtz, Glen		Native grasses	Evaluation/ecology/management/grassland revegetation/rehabilitation	
Semple, Bill	Research scientist	Native and low input grasses	Seed production/establishment	Many
Sharp, Sarah	Research scientist	Native grasses	Ecology/management/survey/conservation/rehabilitation	
Shepherd, Bob		Native grasses	Evaluation/selection/agronomy and use/ecology/management	
Shimmen, Ian	Landscaper	Native and low input grasses	Seed processing/marketing/grasslands revegetation/nursery grower	
Silcock, Richard	Research officer	Native grasses	Evaluation/agronomy and use/ecology/management/extension	Many
Simpson, Peter	Agronomist	Native grasses	Management/production/ecology/education	Many
Sinclair, Donald		Native and low input grasses	Seed processing/marketing/commercial use/commercial production	
Smith, Tony	Research officer			
Sonogan, Henry	Grad. Dip. Nat. Res. student			
Stafford, John	Landholder/contractor			
Statham, Paul	Environmental officer			
Stephens, Bruce	Marketing			
Taylor, Ian	Sales			
Tengrove, Mark	Sales			
Thomas, Clive	Community grasses coordinator			

Name	Organisation	Address	Phone number	Fax
Thomas, Ray	Department of Natural Resources and Environment	Benalla VIC 3672	(03) 5761 1611	(03) 5761 1628
Todd, James	Trust for Nature	8/49 Spring Street Melbourne VIC 3000	(03) 9651 4040	(03) 9651 4048
Tonkinson, Dale	Greening Australia	Melbourne VIC 3000		
Tooth, Ifeanna	Department of Land and Water Conservation	Cowra Research Centre Cowra NSW 2646	(02) 6342 1811	(02) 6342 4551
Van Roosendaal, Nick	Plantwise	PO Box 22 Mernada VIC 3754	(03) 9717 3484	
Venn, David	Department of Natural Resources and Environment	PO Box 487 Horsham VIC 3402	(03) 5381 1255	(03) 5382 3106
Versace, Grahame	Seeds North	4 Gosper Street Vincent QLD 4814	(07) 4779 9323	
Virgona, Jim	Agricultural Research Institute	PMB Wagga Wagga NSW 2650	(02) 6938 1999	(02) 6938 1809
Vogel, Warren	Department of Natural Resources and Environment	PO Box 303 Wodonga VIC 3689	(02) 6055 6111	
Ward, Brett	Agriculture Western Australia	Great Southern Research Institute Clive Street Katanning WA 6317	(08) 9821 3344	(08) 9821 1028
Ward, David	Conservation and Land Management	50 Hayman Road Como WA 6152	(08) 9334 0333	(08) 9334 0327
Warren, Brian	Agriculture Western Australia	444 Albany Highway Albany WA 6330	(08) 9892 8482	(08) 9841 2707
Waterhouse, Doug	Plant Breeders Rights	Canberra ACT 2601		
Waters, Cathy	NSW Agriculture	Agriculture Research Centre PMB Trangie NSW 2823	(02) 6888 7404	(02) 6888 7201
West, Graham	Lachlan Valley Seeds Pty Ltd	6-8 Camp Street Forbes NSW 2871	(02) 6852 1500	(02) 6852 1393
Whalley, Wal	University of New England	Botany Department Armidale NSW 2351	(02) 6773 2477	(02) 6773 3283
White, Peter	Conservation and Land Management	47 Weir Road Harvey WA 6220	(08) 9729 1505	(08) 9729 1868
Wicks, Ross	Landholder	'Springmount' Barraba Road Upper Manilla NSW 2346	(02) 6785 6522	
Wiley, Tim	Agriculture Western Australia	PO Box 16 Moora WA 6510	(08) 9651 1302	(08) 9651 1008
Wilkins, Sabine	La Trobe University	PO Box 199 Bendigo VIC 3550	(03) 5444 7222	(03) 5441 7365

Name	Position	Area of interest	Categories	Species
Thomas, Ray	Botanist	Native grasses	Extension/identification	Many
Todd, James	Botanist	Native grasses	Survey/grasslands conservation	Many
Tonkinson, Dale	Industry development officer	Native grasses	Ecology	Many
Tooth, Ifeanna	Research scientist	Native and low input grasses	Selection/evaluation/processing	Many
Van Roosendael, Nick	Sales	Native and low input grasses	Nursery	Many
Venn, David	Development officer	Native and low input grasses	Management/grasslands conservation	Many
Versace, Grahame		Native grasses	Evaluation/selection/agronomy and use/ecology/ management	
Virgona, Jim	Research scientist	Native grasses	Agronomy/management	Danthonia
Vogel, Warren	Industry development officer	Native and low input grasses	Management/establishment/extension	Many
Ward, Brett	Research officer	Low input grasses	Agronomy and use	
Ward, David	Forester	Native grasses	Ecology	
Warren, Brian	Senior research officer	Low input grasses	Management/agronomy and use	
Waterhouse, Doug	Research/industry development officer	Native and low input grasses	Seed processing/selection/evaluation	Many
Waters, Cathy	Technical officer	Native grasses	Selection/evaluation/agronomy and use/ecology/ seed production	
West, Graham	Commercial seed production	Native grasses	Seed processing/marketing/commercial use/ commercial production	
Whalley, Wal	Associate professor	Native grasses and native legumes	Selection/evaluation/ecology/commercialisation/ extension	
White, Peter	Forester	Native grasses	Ecology	
Wicks, Ross	Landholder	Low input grasses	Cooperating landholder	
Wiley, Tim	Development officer	Native and low input grasses	Evaluation/agronomy and use/management/ extension/education	
Wilkins, Sabine	Research scientist	Native grasses	Agronomy/research	

Name	Organisatlon	Address	Phone number	Fax
Willcocks, Jaqui	Queensland Department of Primary Industries	Locked Mail Bag 6 Emerald QLD 4720	(07) 4982 8800	(07) 4982 3459
Williams, Henry	University of Queensland	PO Box 102 Murwillumbah NSW 2484	(02) 6672 1313	(02) 6672 5812
Wilson, Allan	'Cal Col'	Deniliquin NSW 2710	(03) 5882 3338	(03) 5882 3338
Wlordarcyk, Peter	Grey Box and Grasslands Nursery	50 School Road Balliang East VIC 3440	(03) 5369 5221	(03) 5345 2131
Yu, Ping	University of New England	Department of Botany Armidale NSW 2351	(02) 6773 3235	(02) 6773 3283
Zeitsch, John	Landholder	'Yeumville' Nanima Road Via Hall ACT 2618	(02) 6230 2200	

Name	Position	Area of interest	Categories	Species
Willcocks, Jaqui		Native grasses	Agronomy and use/extension/management/ecology	
Williams, Henry		Native grasses	Evaluation/selection/agronomy and use/ecology/management	
Wilson, Allan	Research scientist	Native grasses	Landholder	Many
Wlordarczyk, Peter	Sales	Native and low input grasses	Nursery	Many
Yu, Ping	PhD student	Native grasses	Ecology/seed production	Dichanthium/ Bothriochloa
Zeitsch, John	Landholder	Native grasses	Cooperating landholder	

PART 2

Name	Project title	Project description	Collaborators	Funding organisation	Key words
Bell, David	Native grasses' response to fire	To assess the ecology and seed germination of various Australian native grasses in response to fire.	Honours student William Loneragan, David Ward		Stipa compresses/fire/seed germination/ecology
Benson, John	Native grasslands of the Riverine Plain (NSW)	Survey and analysis of the native grasslands of the Riverine Plain, South Western NSW, comments on conservation and management.		ANCA 10-95 to 6-96	Riverine plain/native grassland/floristic survey
Booth, Nick	Reclaiming the productive potential of the Upper South-East	Promote the adoption of salt tolerant pastures and various rehabilitative techniques using long term management plans.	Jock McFarlane, Tim Herman, Roger Ebsary, Bob Peake	NLP 3-96 to 3-99	Puccinellia/Tall wheat grass/dryland salinity/pasture productivity
Bowman, Alison	Grazing management for 400-600 mm rainfall zone	Survey of grazer attitude to pasture management and paddock condition on two soil types in the 400 to 600 mm rainfall area north of Dubbo.	Ian Rogan	MRC 7-95 to 6-96	Survey/grazing management/native pastures/400-600 mm rainfall/paddock condition
Bowman, Alison	Improving success of sown pastures in cropping systems on red soils in Central West NSW	Assess the soil fertility and structure benefits of sown pastures (annual and perennial, grass and legume) as leys in cereal cropping system on hard setting red soils.	Chan Yin, John Brock	GRDC 7-93 to 7-99	Pasture ley/perennials and annuals/hardsetting soils/soil fertility
Bowman, Alison	Using perennial grasses for galvanised burr control	Investigate the establishment and competitive ability of perennial grass species with galvanised burr on hardsetting red soils.	Pat Hulme	NLP 1994 to 1999	Perennial grasses/galvanised burr/hardsetting soils/establishment
Clifton, Craig	Low input grasses useful in limiting environments	Aim is to develop agriculturally useful cultivars of Australian native grasses for upland pastures that can reduce or prevent deep drainage and the potential for dryland salinity.	Gavin Mann, Bill Johnston, Meredith Mitchell, Ian Cole, Ifeanna Tooth	LWRRDC and MRC	Salinity/drainage/productivity/persistence
Dear, Brian	Improved yield, quality and sustainability of crop production through better pasture management				Yield/sustainability/management/crop production.
Dickson, Katrina	Native grass management plan	Develop a management plan for the native grasslands of the Liverpool Plains NSW.	Jim McDonald		Native grasses/SEPP 46/Liverpool Plains/Stipa aristiglumis
Dowling, Peter	Grazing Systems Sustainability Key Program		Denys Garden, Jim Virgona	MRC	Grazing management
Flower, Kirsty	The identification and utilisation of superior grasses for the dryland grazing industries of Southern Australia	To identify, develop and promote the use of superior grass cultivars for the acid, sandy soils in Southern Australia.		MRC 7-93 to 9-97	Sandy soils/evaluation/persistence/productivity/perennial veldt grass standard
Friend, Doug	Management of natural pastures for sustainable production			NLP	Sustainable/management/natural pastures
Garden, Denys	Evaluation of native grasses	Comparison of DM production and quality of native grasses.	Keith Clark, John Dalgelish, Peter Simpson	NSW Agriculture, NRMS community grasses 6-94 to 6-96	Production/yield/quality/native grasses

Name	Project title	Project description	Collaborators	Funding organisation	Key words
Garden, Denys	Grazing management of native pastures	To assess the effects of grazing on the botanical composition of native pastures.	John Zeitsch, Phil Graham	MRC TPSKP 6-93 to 10-96	Grazing management/botanical composition/ Danthonia/Microlaena stipoides
Groves, Richard	Domestication of Kangaroo grass and Wallaby grass (Hume)		Brian Sindel		Wallaby grass/Kangaroo grass
Hacker, Ron	Practical management of perennial grasses in rangelands			IWS	Perennial grasses/management
Hogan, Elvyne	Action plan for nature conservation and vegetation management for Avoca, Loddon and Campaspe			NRMS	Vegetation management/conservation
Huxtable, Charles	Rehabilitating open cut mines using native pasture species	Incorporate native grasses into mine rehabilitation practices, provide appropriate recommendations.	Hunter Coal Environmental Group	Australian Coal Association Research Program 7-94 to 7-97	Revegetation/groundcover/germination/ seed handling/survival
Johnston, Bill	Low input grasses useful in limiting environments	Develop agriculturally useful cultivars of Australian native grasses for upland pastures that can reduce or prevent deep drainage and the potential for dryland salinity.	Gavin Mann, Craig Clifton, Meredith Mitchell, Ian Cole, Ifeanna Tooth	LWRRDC/MRC	Salinity/drainage/production/persistence
Jones, Christine	Commercialisation and development of an agronomic package for Microlaena stipoides for forage and other purposes	Evaluate production, persistence and nutritive value of selected lines of Microlaena against four commercial cultivars of improved perennials.	Wrightson Seeds	MRC, RIRDC, University of New England 7-93 to 6-98	<i>Microlaena stipoides</i> /commercialisation/ forage mass/Amenity grass/ Turfgrass
Kahn, Lewis	Sustainable rangeland grazing systems for the Northern Tablelands	Survey landholders' information needs to develop and dissemination extension packages with sustainable grazing systems.		NLP 3-96 to 3-99	Sustainable/grazing information needs/ extension packages/education
Kemp, David	Grazing systems sustainability key program			MRC	Grazing management
Kemp, David	Pasture management envelope, methods of analysis				
Keys, Michael	Prime pastures			NLP	Pasture management/establishment
Loch, Don	Improved handling of chaffey grass seeds	To optimise processing of chaffey seeds from native and exotic grasses, documenting effects of chaffey appendage removal on establishment +- polymer seed coatings.	Graham West, Paul Patten, Donald Sinclair	RIRDC, LWRRDC 9-93 to 8-97	Chaffey seeds/seed processing/ establishment/Bothriochloa
Lodge, Greg	Evaluation of Coolatai grass (<i>Hypparrhenia hirta</i>)	Assess effects of herbicides and grazing on the production and persistence of Coolatai grass.	Lester McCormick, Ross Wicks	NSW Agriculture R&D initiatives 7-95 to 6-97	Herbicides/grazing management/ Coolatai grass/palatability
Lodge, Greg	Grazing management of wiregrass dominant pastures	To assess effects of grazing on botanical composition, quality and persistence of wiregrass dominant native pastures.	Lester McCormick, Peter Gallagher	MRC TPSKP; 6-93 to 10-96	Wiregrass/grazing management/Redgrass/ Aristida/Bothriochloa macra/pasture quality

Name	Project title	Project description	Collaborators	Funding organisation	Key words
Loweln, Geoff	Improving utilisation of African lovegrass	Examine different management systems for increasing lovegrass utilisation.	Tenterfield Landcare Group	NLP	Eragrostis/Lovegrass/utilisation/grazing management
Mann, Gavin	Low input grasses useful in limiting environments	Develop agriculturally useful cultivars of Australian native grasses for upland pastures that can reduce or prevent deep drainage and the potential for dryland salinity.	Bill Johnston, Craig Clifton, Ian Cole, Ifeanna Tooth, Meredith Mitchell	LWRRDC, MRC	Salinity/drainage/production/persistence
McCormick, Lester	Mapping of native grass areas	Using landsat imagery to identify and map areas of native pasture in Northern NSW.	Ian McGowen, Greg Lodge	NSW Agriculture R&D initiatives 7-95 to 6-97	Landsat/satellite imagery/mapping/resources management
McDonald, Warren	Saleable stock from stable pastures	Documented the role of fertiliser in increasing ground cover.	NSW Department of Land and Water Conservation, University of New England	NSW Agriculture, Agribusiness	Ground cover/fertiliser use/nutrient deficiencies/soil erosion/grazing management
Millar, Jo	The role of farmer knowledge in the information system for the sustainable management of perennial pastures		Graig Pearson, Clive Thomas	MDB	Farmer knowledge/extension
Mitchell, Meredith	Low input grasses useful in limiting environments	Develop agriculturally useful cultivars of Australian native grasses for upland pastures that can reduce or prevent deep drainage and the potential for dryland salinity.	Gavin Mann, Bill Johnston, Craig Clifton, Ian Cole, Ifeanna Tooth	LWRRDC, MRC	Salinity/drainage/production/persistence
Semple, Bill	Manipulation of pasture composition and increasing seed			NLP	Pasture manipulation/seed production
Sharp, Sarah	Vegetation diversity and patterns in natural temperate grasslands in the ACT subregion	Determination of relationships between plants, community patterns and site attributes to assist in the development of a conservation strategy.		ANCA 1993 to 1997	Classification/vegetation communities/natural grasslands/conservation
Sharp, Sarah	Gap replacement in two natural temperate grassland subcommunities in the ACT	An experimental study of the vegetation dynamics in two grassland communities, after gap creation, with/without litter and soil disturbance.		ANCA 1993 to 1997	Vegetation dynamics/gap replacement/weeds/soil disturbance
Sharp, Sarah	Long term monitoring of natural, temperate grasslands in the ACT	Monitoring of vegetation change in permanent quadrants in 20 natural temperate grasslands.	Mark Dunfold	ANCA, Endangered species unit, ACT Parks and Conservation Service, 1993-1997	Natural grasslands/management/monitoring/vegetation community
Sharp, Sarah	A comparison of burning and mowing in two natural temperate grassland subcommunities in the ACT	Responses to burning and mowing are being measured at multiple sites.		ANCA, Endangered species unit, ACT Parks and Conservation Service 1994 to	Management/burning/mowing/dynamics/natural grasslands
Simpson, Peter	Managing native pastures for persistence and production			NLP/L&W	Fertiliser/management/persistence/production
Stafford, John	Utilising native grasses in eco-restoration	To produce seed from native grasses and develop management technology to facilitate their use in eco-restoration projects.	Native Grasses Resources Group, Robert Myres	NLP 9/93 to 6/96	<i>Microlaena stipoides</i> /Danthonia spp./ <i>Themeda triandra</i> /harvesting/establishment

Name	Project title	Project description	Collaborators	Funding organisation	Key words
Tooth, Ifeanna	Low input grasses useful in limiting environments	Develop agriculturally useful cultivars of Australian native grasses for upland pastures that can reduce or prevent deep drainage and the potential for dryland salinity.	Gavin Mann, Bill Johnston, Meredith Mitchell, Ian Cole, Craig Clifton	LWRRDC/MRC	Salinity/drainage/production/persistence
Virgona, Jim	Strategies for maximising the persistence of perennial grass through drought			MRC	Grazing management/persistence/drought
Vogel, Warren	Demonstration of successful management practices for native grasses in Victoria	Extension of recognition, value and management of native grasses.	Meredith Mitchell	NLP 4/94 to 3/97	Management practices/Microlaena/Danthonia/Bothriochloa/native pastures
Waters, Cathy	Domestication of Mitchell grass for use in marginal croplands and pastoral areas in Eastern Australia	Selection and commercial release of Mitchell grass and users' guide.	Peter Johnson, David Phelps	IWS/GRDC 7-95 to 6/97	Domestication/ <i>Astrelba pectinata</i> / <i>Astrelba lappacea</i> ; nitrogen
West, Graham	Commercial Danthonia seed production	Seed production and processing of Danthonia seed on a commercial scale.	Phillip Adams, Hugh Ellis, Don Loch, Greg Lodge, Eric Elliot	RIRDC, LWRRDC	Chalfey seeds/seed production/seed processing/Danthonia/commercialisation
Whalley, Wal	The acceptability of <i>Microlaena stipoides</i> to sheep and cattle grazing under extensive conditions on the Northern Tablelands	Investigate the proportion of <i>Microlaena</i> and other species in diets of sheep and cattle grazing Ryegrass, White clover, <i>Microlaena</i> , <i>Danthonia</i> pastures.	Mark Gardener, Christine Jones	ARC University of New England 1-94 to 12-96	<i>Microlaena</i> /Ryegrass/ <i>Danthonia</i> /diet selection/sheep/cattle

PART 3

Name	Address	Phone number
Allen, V. & R. & M.	'Rocky Point' RMB 5240 Wangaratta VIC 3678	(03) 5725 1586
Bower, R. & Down, C.	RMB 1539 Devenish VIC 3726	(03) 5764 1391
Bucknell, S.	'Otterbourne' Wargeila Road Yass NSW 2582	(02) 6227 3210
Clarke, R.	'Tallandowing' RMB 1166 Gundowering Via Wodonga VIC 3690	(02) 6027 5285
Gibb, B. & Allan	RMB 1170 Milawa VIC 3678	
Hill, B.	'Corramandel' RMB 1340 Warrenbayne VIC 3670	(03) 5763 2360
Howell, P.	31 Templeton Street Avoca VIC 3467	(03) 5465 3110
Jefferies, P.	'Two Creeks' RMB 4042 Wodonga VIC 3691	(02) 6037 6258
Merkel, M.	RMB 4014A Wodonga VIC 3691	(02) 6020 1133
Mould, J. & Fred	'Cout Park' Michelago NSW 2620	
Robertson, G.	'Sutton Grange' RMB 733 Yass NSW 2582	(02) 6227 7262
Russell, F.	'Coomerong' PO Box 21 Adelong NSW 2720	(02) 6069 4644
Russell, G. & D.	'Milroy' Rockleigh via Adaminaby NSW 2630	(02) 6454 2393
Sherlock, R.	'Kiaoro' Cooma NSW 2630	(02) 6452 2812
Stacy, T.	'Camelot' PO Box 64 Tumut NSW 2720	(02) 6947 2173
Stone, P.	'Happy Valley' RSD 391 Pyalong Road Baynton VIC 3444	(03) 5423 7235
Wells, B.	RMB 263 Via Jingellic NSW 2642	(02) 6037 4136