

Schinus pilifera I.M. Johnst.
Anacardiaceae

Syn.: *S. dependens* var. *tomentosa* R.E. Fr.,
S. fasciculata var. *boliviensis* F.A. Barkley

Description: Shrubs, 1–3 m tall, thorny, leaves obovate, 2–3 cm long, leathery, flowers pale yellow-green, 1–2 mm across, in condensed many-flowered axillary panicles, 1–2 cm across.

Distribution: South America (Bolivia, Argentina).

Habitat: Dry subalpine slopes.



CC 1.0, The Field Museum of Natural History

Stem with a diameter of 15 mm. Rings distinct. Maximal 14 rings. Mean ring width 0.5 mm. Analyzed: 1 individuals. Slides only red-stained (Safranin).

Xylem

Transverse section

Diffuse-porous to semi-ring-porous. Vessels in radial rows and in diagonal patterns. Earlywood vessel diameter 20–30 µm. Vessel outline angular. Vessels and fibers lignified. Fibers thick-walled, with helical thickenings. Parenchyma paratracheal.

Tangential section

Rays 1–2-seriate.

Radial section

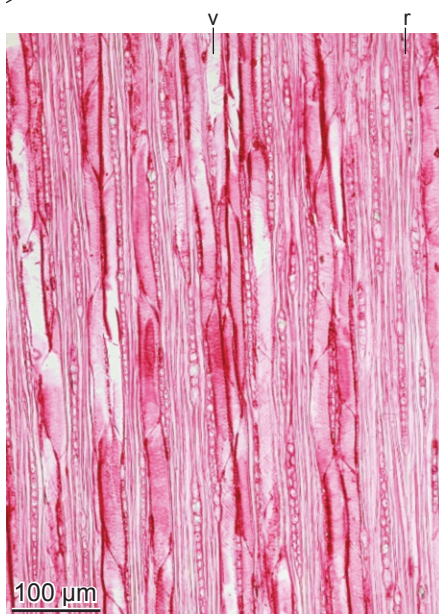
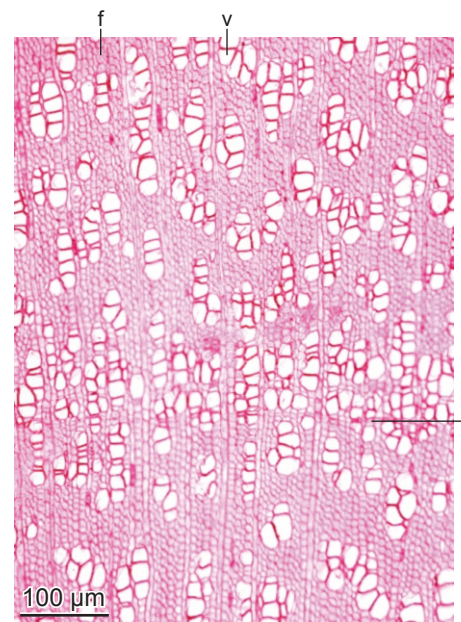
Perforation plates simple. Intervessel pits round. Vessel length 80–100 µm. Fiber pits small, simple, round. Ray cells prostrate and upright. With few prismatic crystals in rays.

Bark

No slide available.

Pith

No slide available.



Features according to IAWA and Crivellaro and Schweingruber 2015

Xylem 1 - 4 - 5 - 7 - 10 - 13 - 22 - 36 - 40.2 - 50.2 - 52.3 - 61 - 69 - 79 - 98 - 104 - 136

