



Incident Command System (ICS) Principles



Objectives:

- Discuss emergency management in Michigan
- Review types of emergencies and responses
- Describe triggers for activating ICS
- Describe how ICS has helped in responses

Emergency Response

The Big Picture

Michigan's Emergency Management Act
Public Act 390 of 1976

Local
emergencies

Regional emergencies- mutual aid

State
emergencies

Emergency Management
Assistance Compact – state to state

Federal Emergencies

Emergency Response

The Big Picture

Federal Emergencies

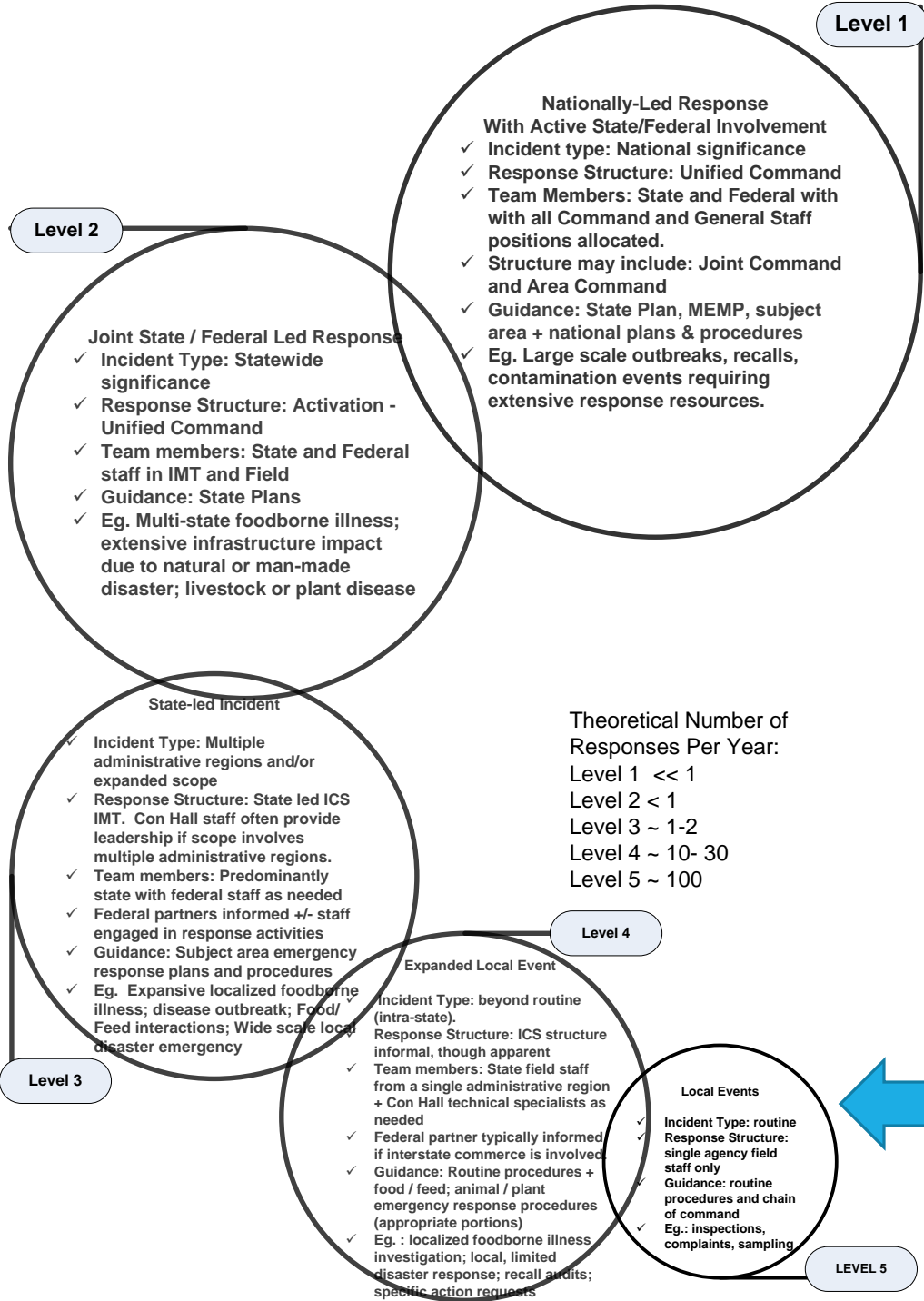
- Unified Command with FEMA/FDA/USDA

State Emergencies

- State Agencies; MDARD Sample Team; Emergency Management Assistance Compact

Local Emergencies

- Regional Emergencies/Local Health & Emergency Mgmt; Multi-Divisional



Emergency Response

The Big Picture

- Michigan's Emergency Management Act – Public Act 390 of 1976
- Governor may:
 - Declare State of Emergency
 - Suspend regulatory statutes or rules
 - Compel evacuation
 - Control access to or within an area
 - Commandeer private property (with compensation)
 - Direct state assets, including personnel and property

Emergency Response

The Big Picture

State Agency Role - State Emergency Operations Center

- Speak for/bind/commit Department resources
 - Issue Advisories and Orders
- Help address local resource requests
- Liaison role - to everyone
- MDARD: Relay food & agriculture sector issues and concerns



Emergency Response

The Big Picture

- Department Emergency Management Coordinator Role—Planning, Training, Exercises, Responses
 - Planning—National Infrastructure Protection Plan / Homeland Security Directives
 - Michigan Emergency Management Plan
 - MDARD Emergency Plan
 - Food/Feed/Avian Influenza/Asian Longhorned Beetle, etc. Response Plans
 - Training—ICS & subject matter expertise
 - Exercises and real world events—demonstrate, test, and document capabilities
 - Support responses / activations
 - After action reports & improvement plans—lessons learned

The Incident Command System

What is ICS?

- ICS is a system to enable effective and efficient incident management by integrating facilities, equipment, personnel, procedures, and communications within a common organizational structure
- Mandated: Homeland Security Presidential Directive #5

Basic concepts and principles

- Local response with additional resources and authority as needed
- Standards for organization, doctrine, procedures, terminology
- Least possible disruption on existing systems and processes
- User friendly and widely applicable
- Modular and scalable—ICS Compressed

The Incident Command System

History

- Dates back to major wildfires in 1970's
- Problems:
 - Terminology varied
 - Lack of consolidated action plans
 - Unable to efficiently expand/contract response

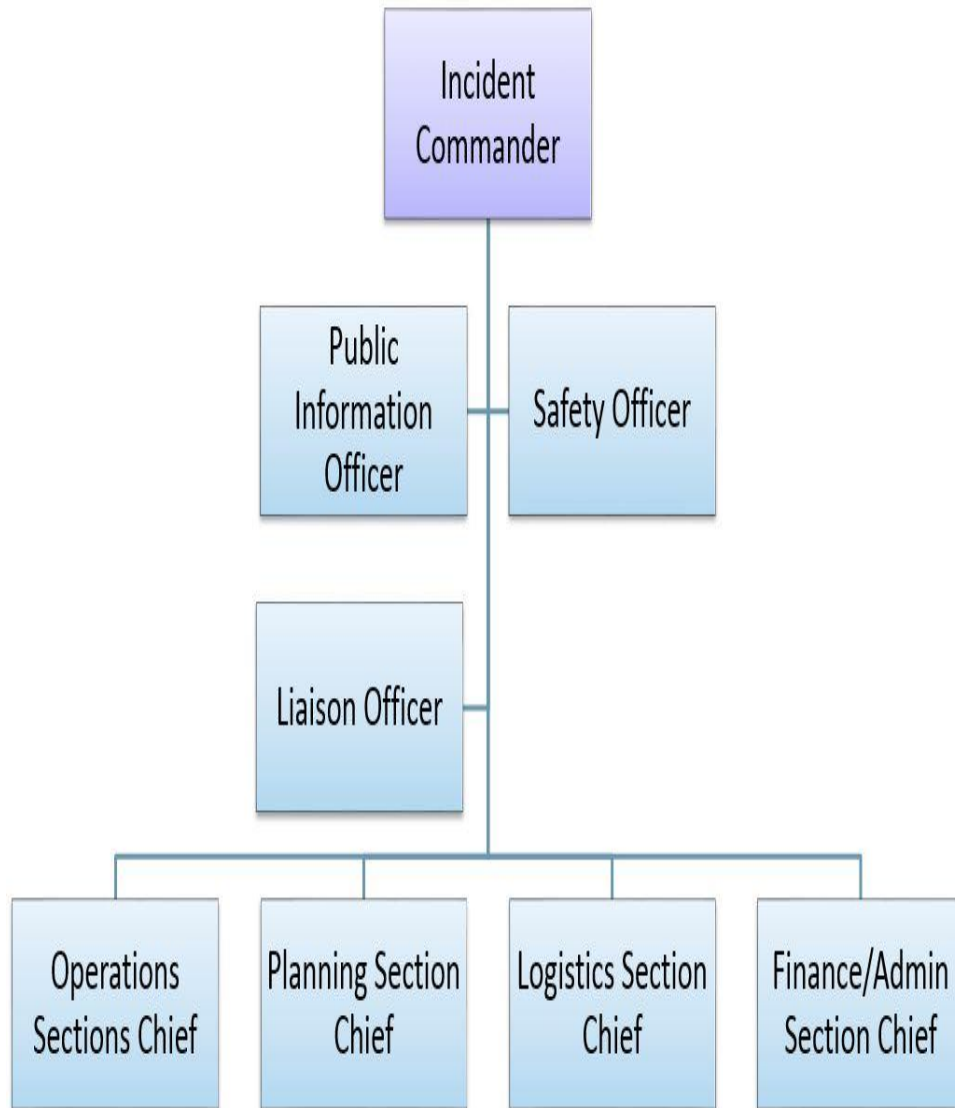
Basic concepts and principles

- Common terminology
- Modular organization structure
- Unity of command
- Manageable Span of Control
- Comprehensive Resource Management

What ICS Is Designed To Do

- Interdisciplinary and organizationally flexible
- Incidents of any kind or size
- Routine or planned events or large and complex emergency incidents
- Variety of agencies to meld rapidly into a common management structure
- Be cost effective by avoiding duplication of efforts

Incident Management Team (IMT) Roles and Responsibilities



Incident Commander is in charge

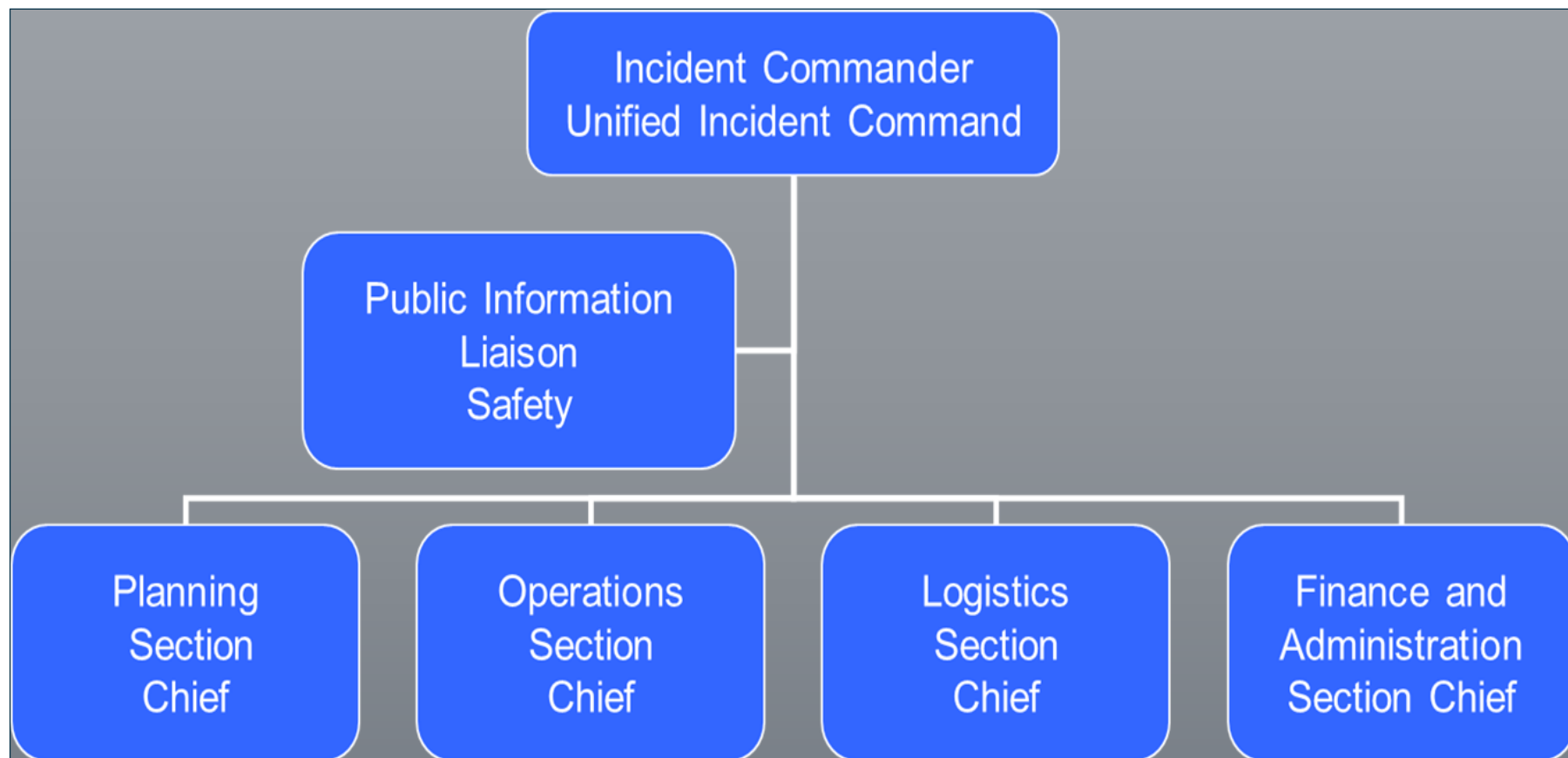
Operations does the work

Planning gets and gives info

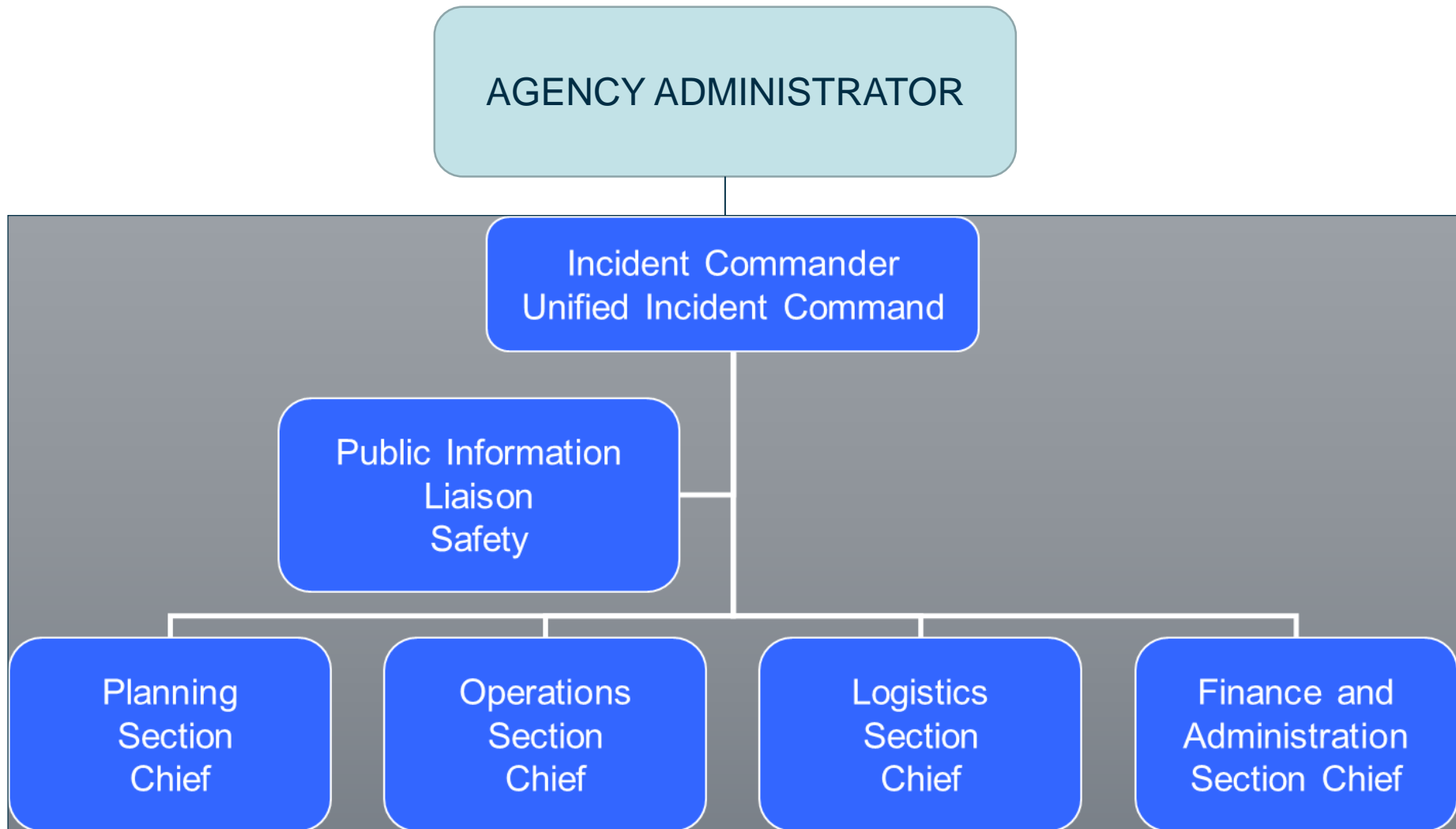
Logistics gets equipment and people

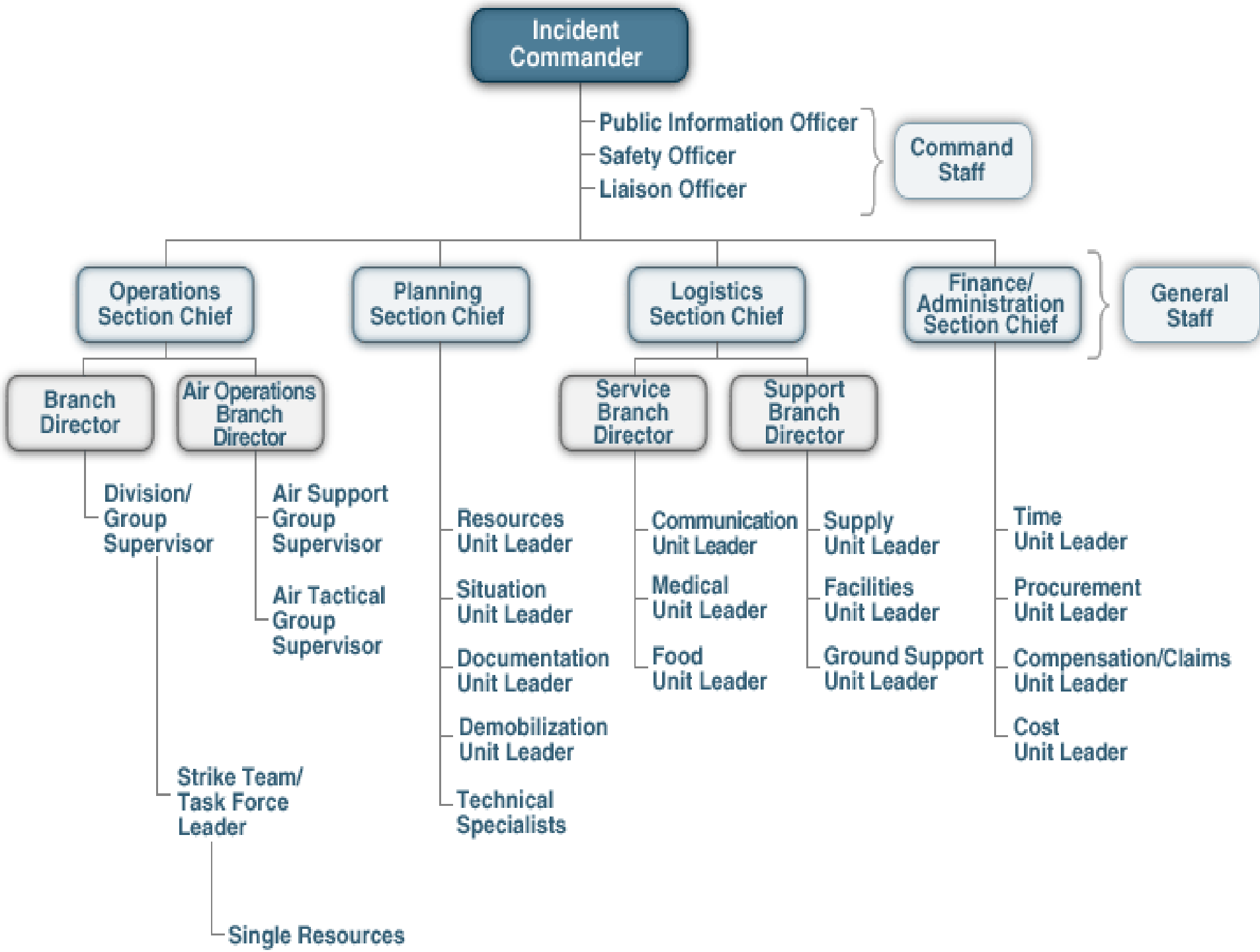
Finance pays for it all

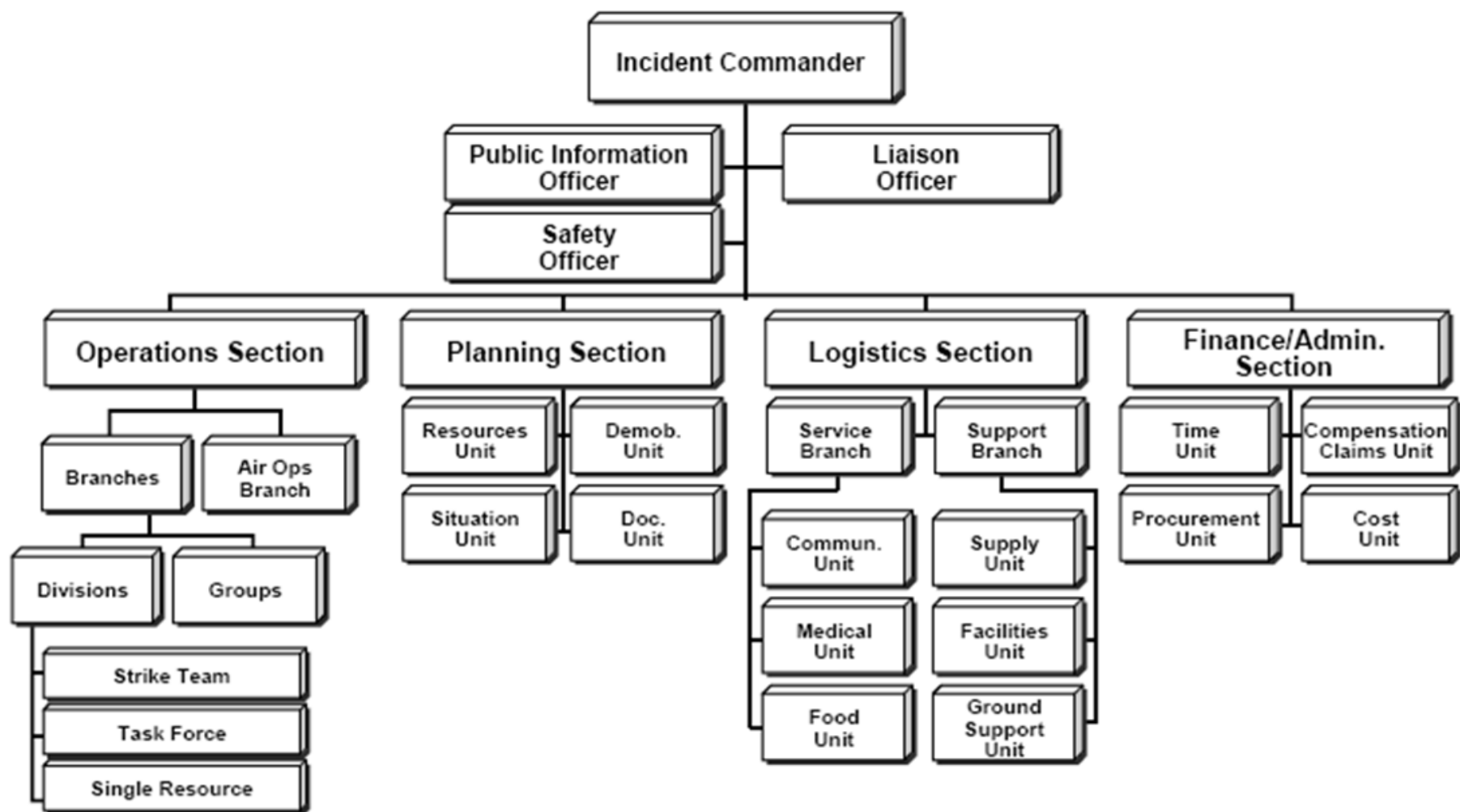
BASIC COMPONENTS OF ICS ORGANIZATION



BASIC COMPONENTS OF ICS ORGANIZATION



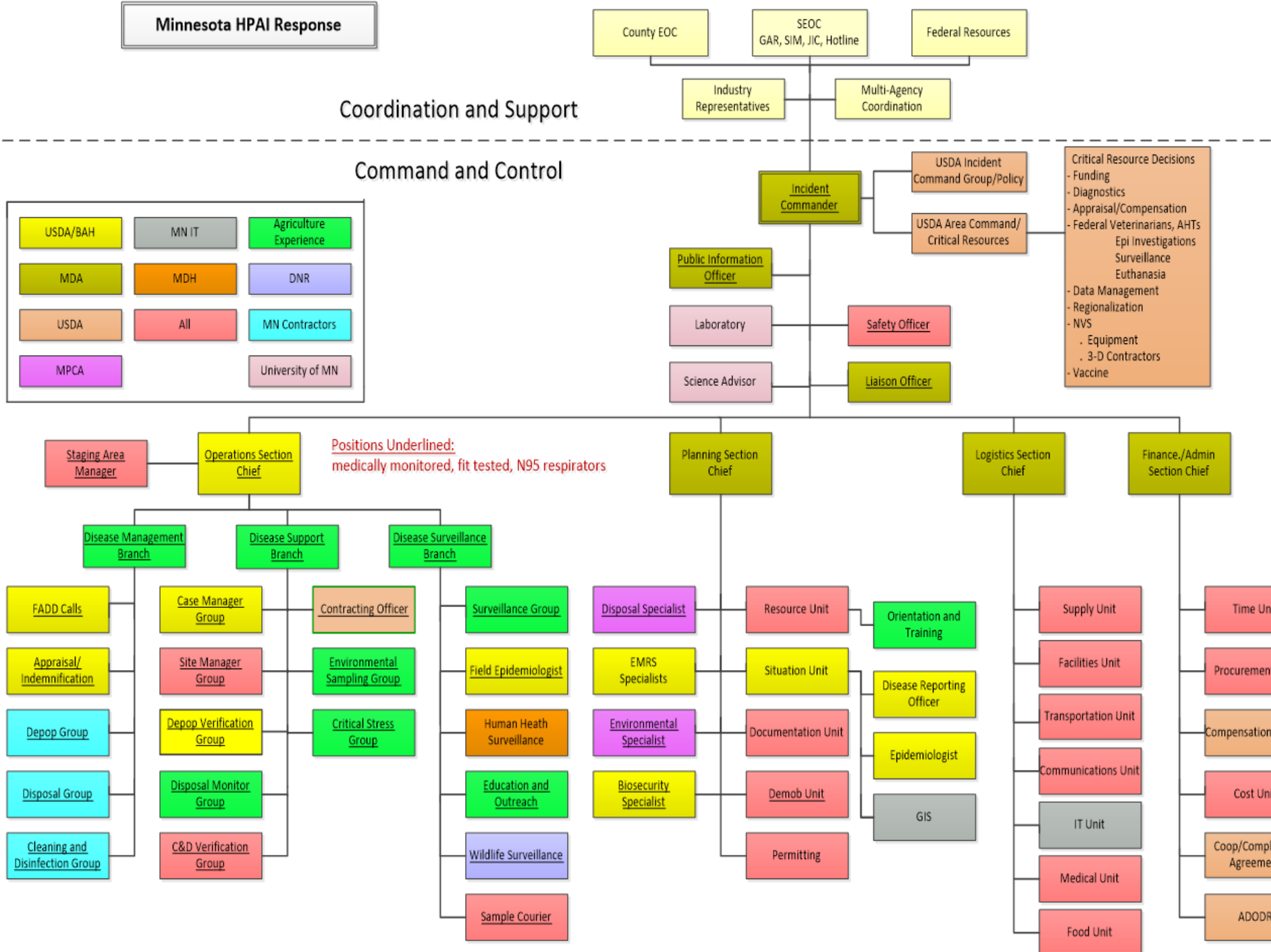




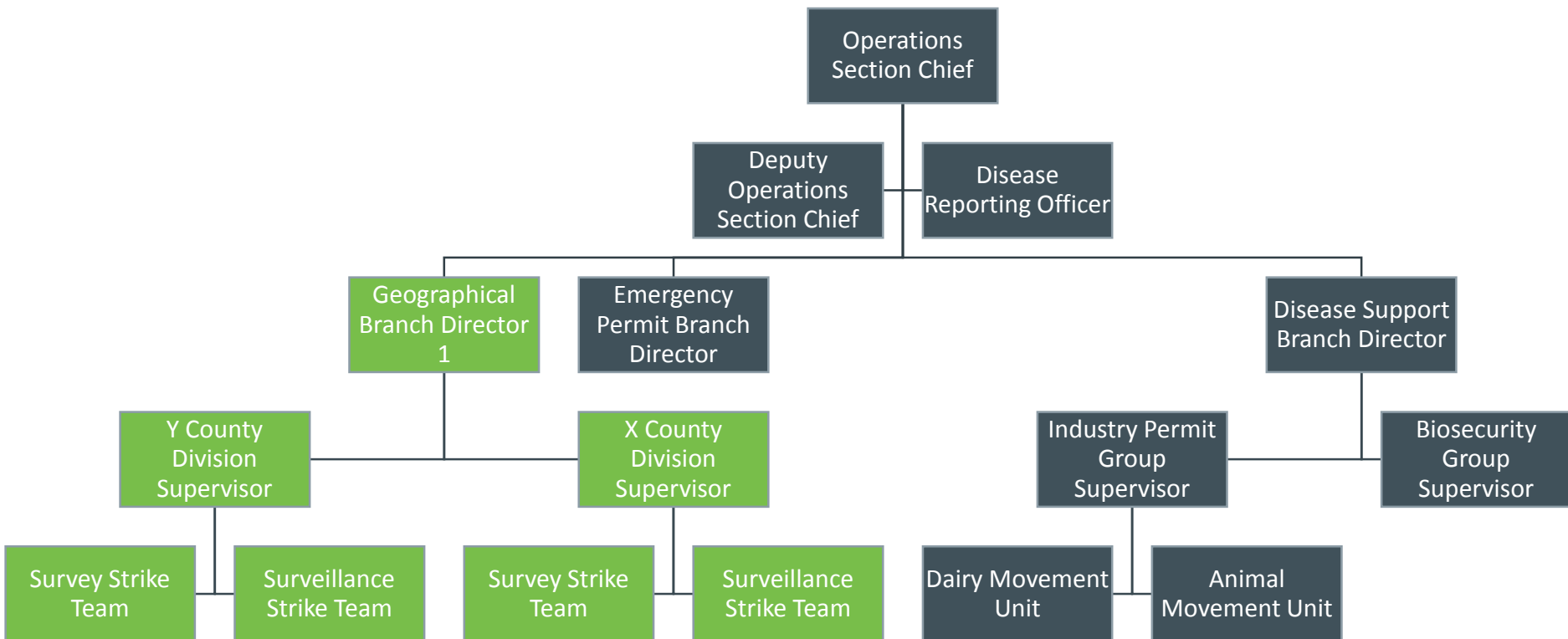
Minnesota HPAI Response

Coordination and Support

Command and Control

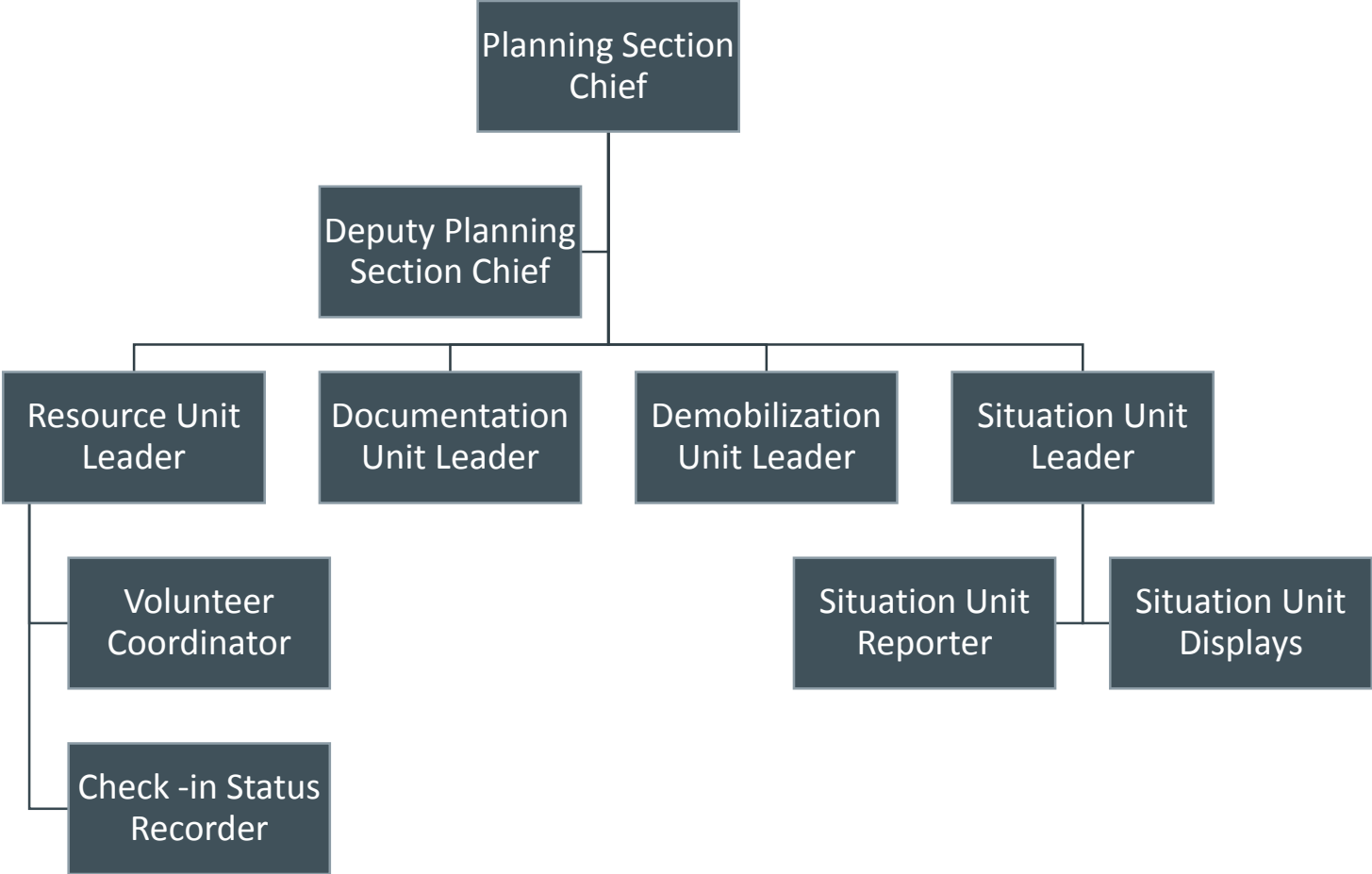


Operations Section Example

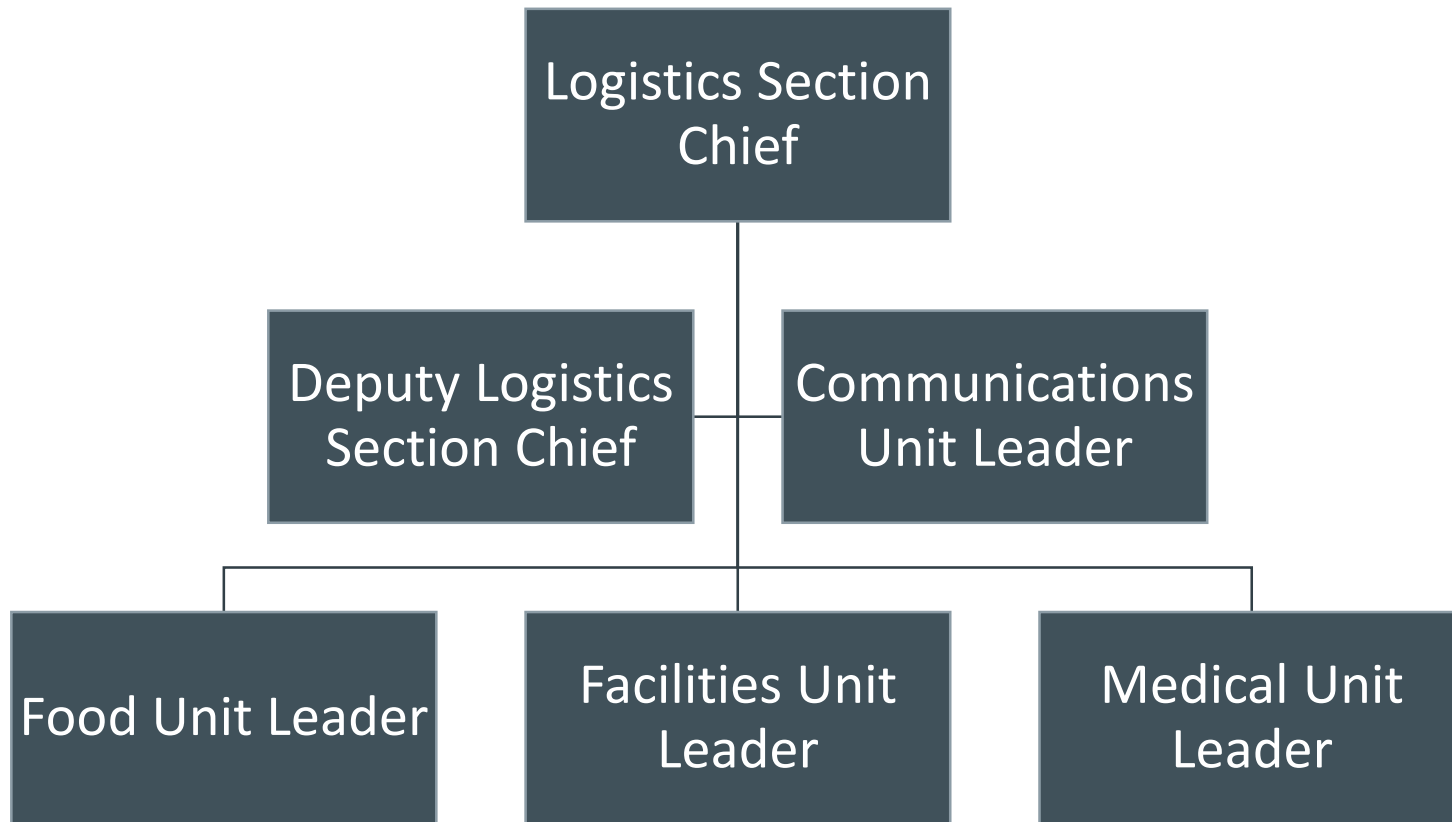


Green boxes represent positions in the field

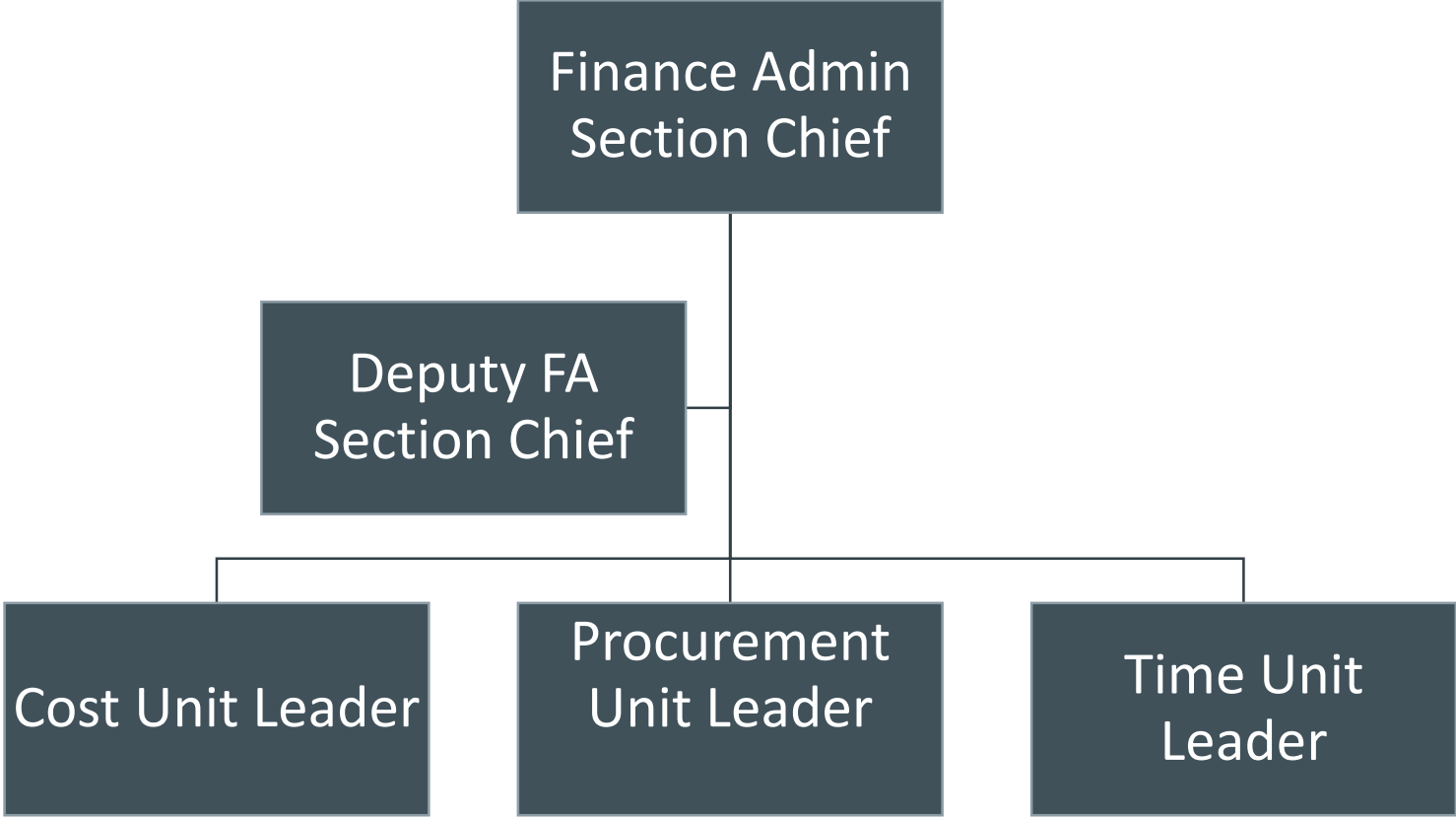
Planning Section Example



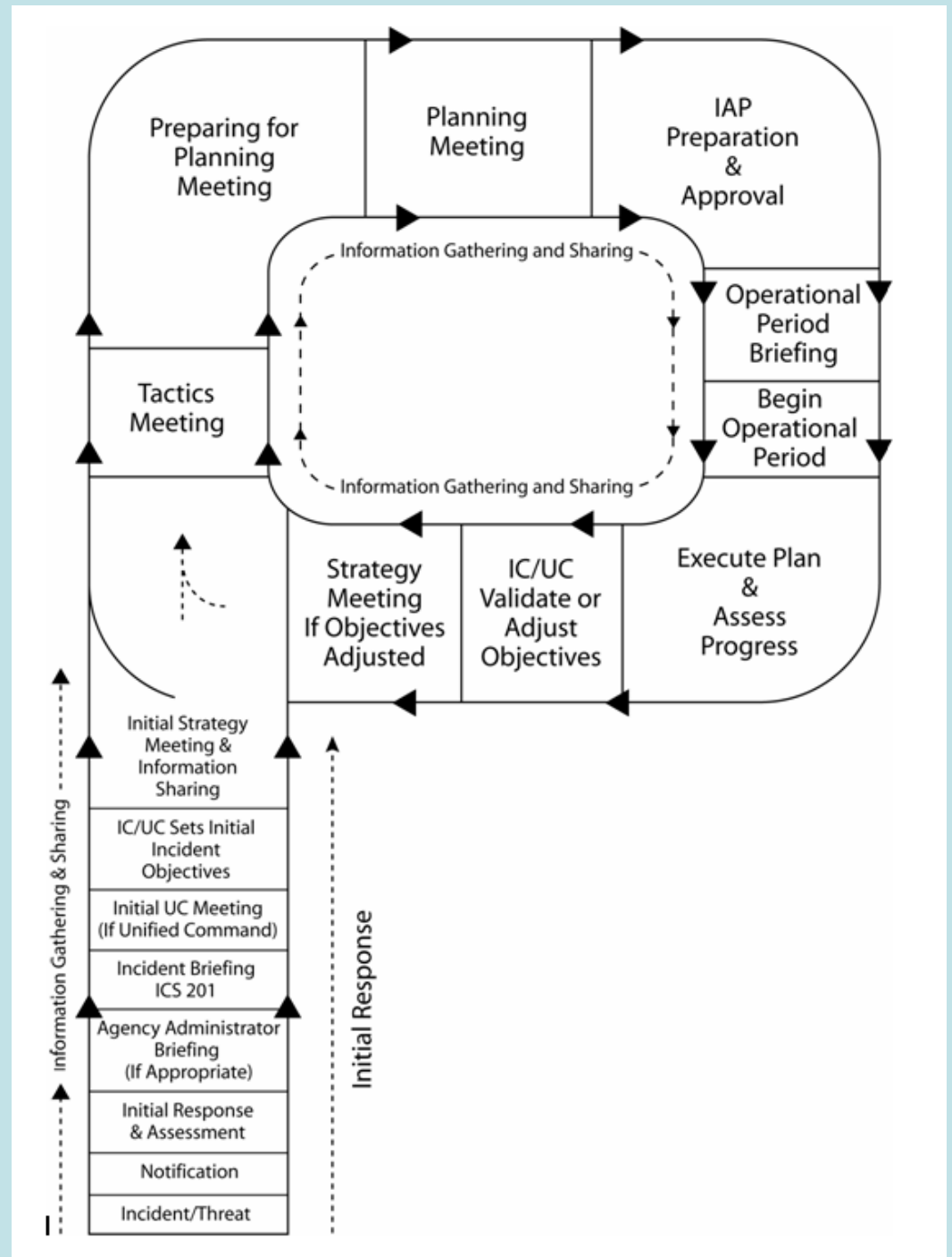
Logistic Section Example



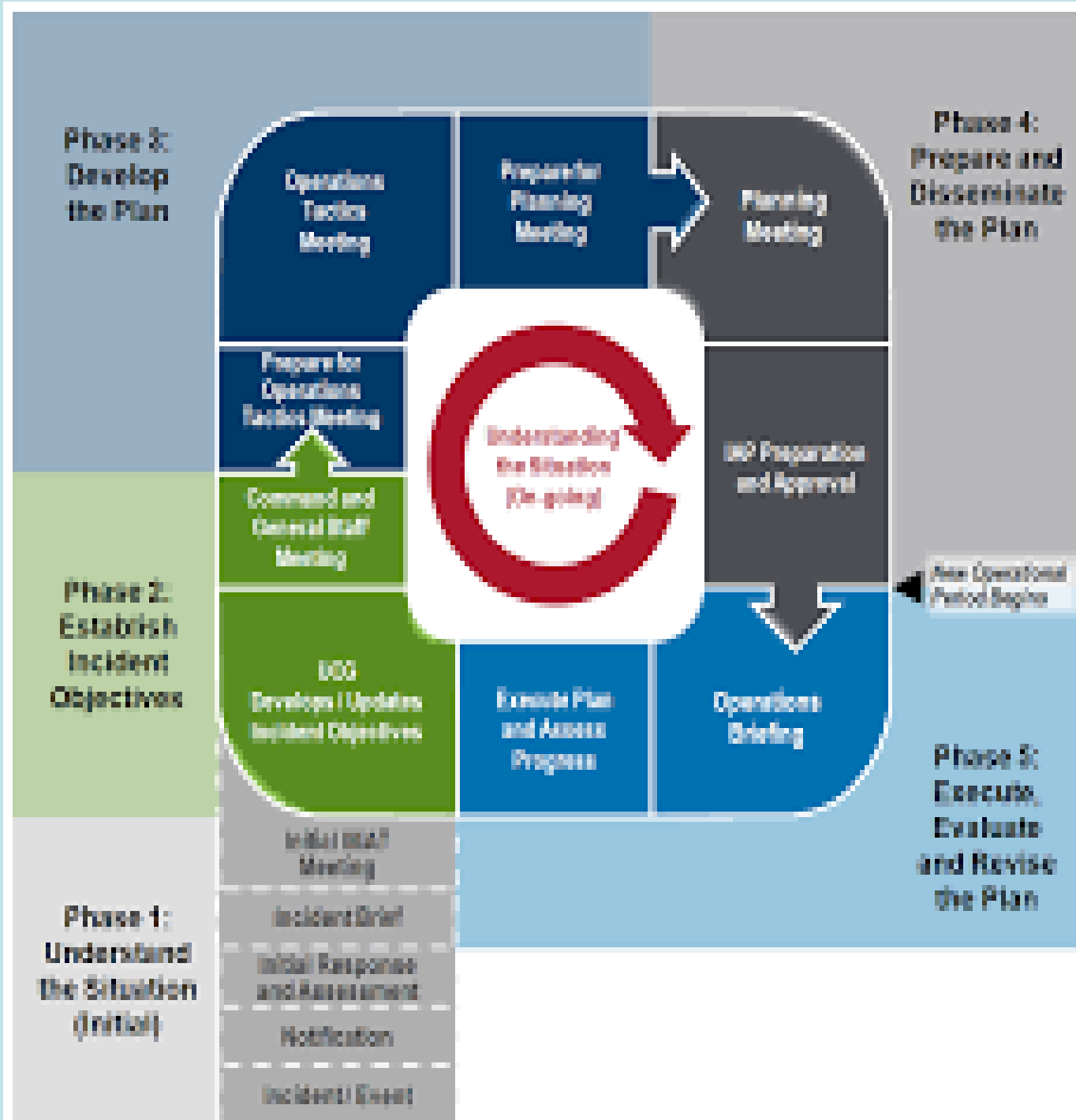
Finance/Admin Section Example



The Planning “P”



The Planning "P"

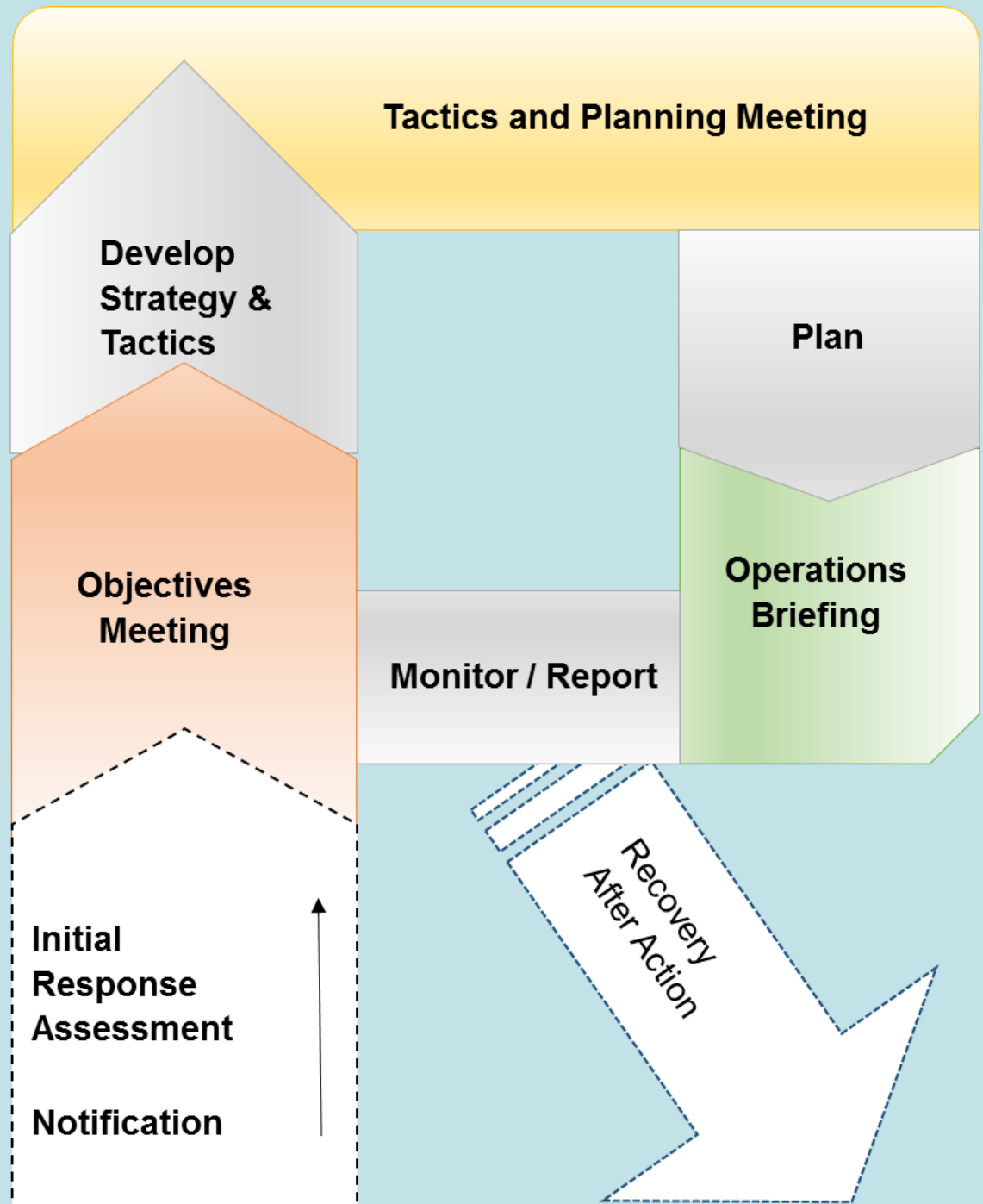


The Planning "p"



ICS Compressed

The Recovery "R"



Activating Incident Command

Factors:

- Field request
- Response complexity, severity, size
- Communication issues
- Special Circumstances

Authority:

- Who activates?
- Delegation
- Agency administrator awareness

Staffing IMT:

- Availability
- Skills/abilities
- Communicate details to routine supervisors
- Duration

IMT Roles and Responsibilities

Person(s) In Charge

- Create assignments
- Planning cycle participation
- Contribute to the incident action plan
- After action debriefs and reports
- Follow chain of command

Operational Team (Field Work)

- Attend briefings
- Complete assignments
- Complete field reports
- Provide situational reports
- Participate in after action debriefs
- Follow chain of command

IMT Considerations

Prioritization of workload

- IMT takes precedence over routine work
- Deployment effects routine workload
- Expected duration-Overtime, Comp Time?

Communication

- Formal vs. informal
- Internal vs. external
- Legal and Media

Demobilization

IMT Lessons Learned

BRIEF-ings

Focused Decision Making

Limited Decision Makers

Sharing the Work

IMT Lessons Learned

BRIEF-ings

Incident Action Plan Timeline

Operational Period

Staying In Your Lane

Debrief – Hotwash – After Action

Scalable – Including Multi-Agency

Legal Requirements & Sensitivities

Continuous Improvement

MDARD IMT Responses

- Lasalocid in Feed: Yes
- Avian Influenza: Yes
- E. coli in artisan cheese: Partial
- Sampling Team: Yes
- Intentional contamination in grocery: No
- Flint water response: Yes
- Lead in Spices: Yes
- Salmonella St. Paul: Yes, Unified Command

Conclusion

- Michigan has multiple experiences with scalable responses
- ICS can help provide structure, improve response, and 'bring order out of chaos'
- Practice, Practice, Practice!