

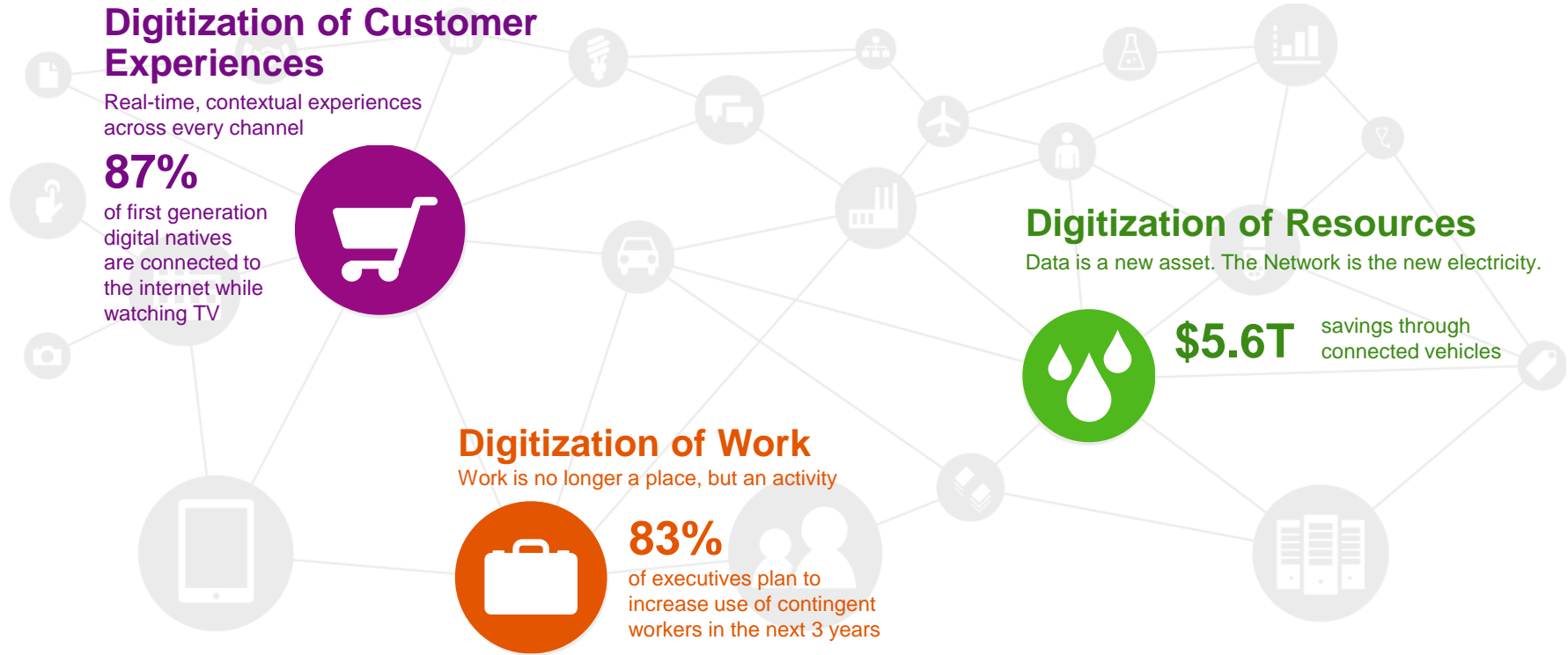
An aerial night view of a city skyline, likely New York City, with numerous skyscrapers illuminated. The SAP S/4 HANA logo is overlaid on the top left. The logo consists of the word 'SAP' in white on a blue background, followed by 'S/4 HANA' in blue. A small registered trademark symbol (®) is visible below the 'SAP' text.

# SAP S/4 HANA

## Transformation in a Digital Economy

Claus Gruenewald | March 2016

# The Digital Economy: This Time It IS Different



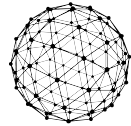
Sources:  
[Business Insider](#), [www.emarketer.com](#), SAP Fact Sheet.  
Impact Report, Harris Interactive. Colin Shaw and John Ivens, 2010; Deloitte Millennial Study, 2015; Shell, 2014; WRI, 2014; SAP SE, 2014. [Towers Watson](#), 2012.

# The world is changing quickly – digital technologies are everywhere

## Digital technologies are here to stay



Mobile



Hyper-connectivity



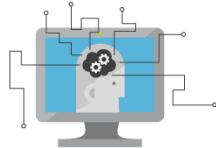
In-memory computing



Internet of Things



Big Data



Machine learning



Social



Cloud

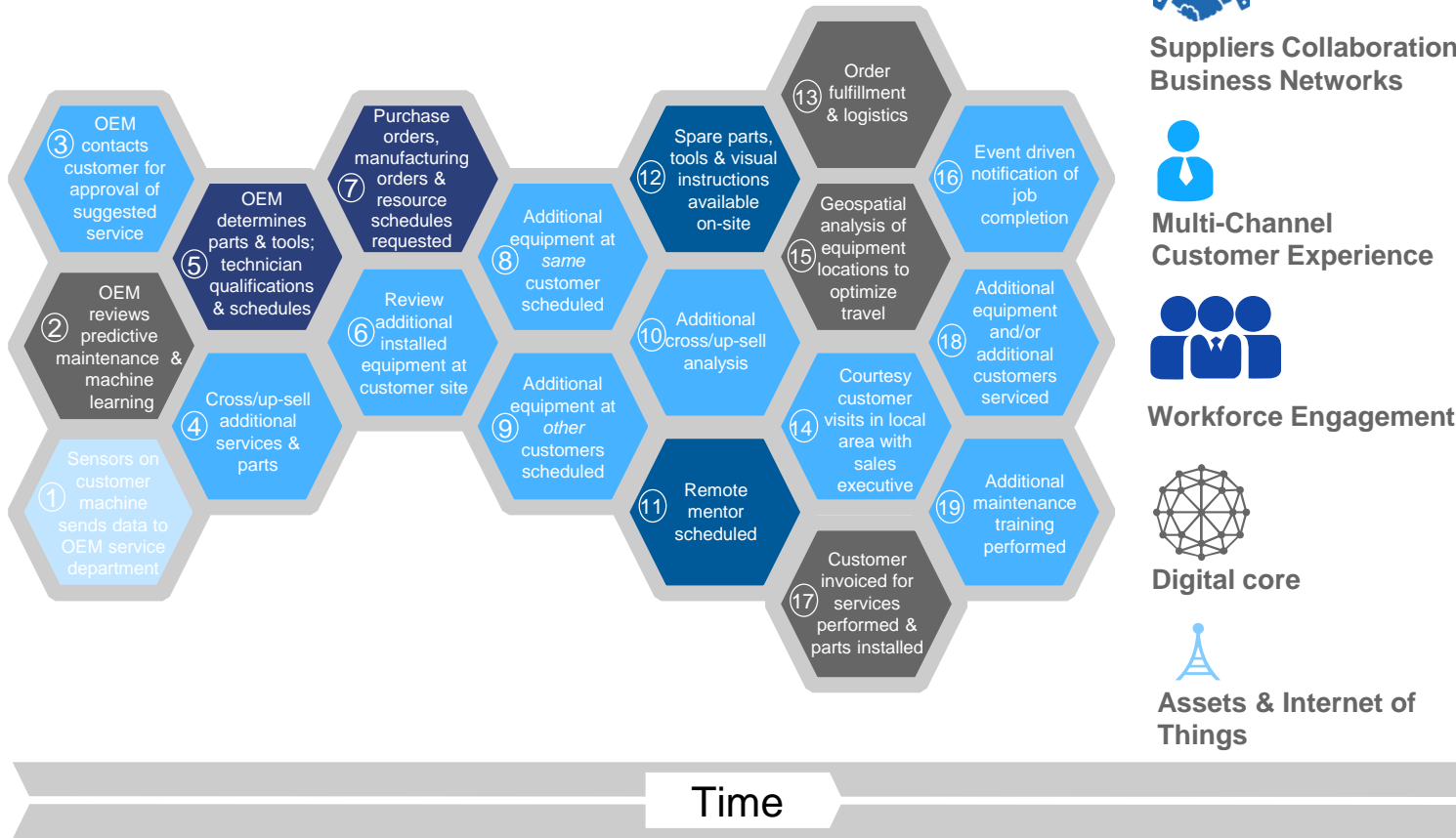
- Everything which can be digitized will be digitized
- Digitization of data and interactions increasing at an exponential pace
- Mobile, Internet of Things, and hyper-connectivity enabling immediate access to every “thing”
- In-memory changing the speed of computing and delivering the vision of real time
- Big Data and machine-learning technologies changing how data is being analyzed with predictive analytics
- Cloud enabling digitization with commodity storage, and on-demand computing at scale

# Digital technologies are disrupting business models

Example from Industrial Machinery & Components

**Digital Business Scenario:** Predictive maintenance alert results in field service technician dispatched to multiple customer sites

Value estimates



6%

Higher MTO on-time delivery to request date for discrete manufacturers in North America and EMEA where system allows for advance shipping notifications (ASNs) so suppliers can provide delivery and packing information to the receiver in advance of orders arrival

58%

Lower customer reject rate for organizations in North America and EMEA where all of the metrics & KPIs that are needed to monitor, measure, analyze & control performance are captured easily & automatically

42%

Lower pick to ship cycle time for organizations that have high-performing, customer-centric warehouses enabled by best in class information technology

4-5x

More revenue generated by value-added services on top of simple machine connectivity

Source: SAP and customer benchmarks / Forrester Research

# Saudi Paper Manufacturing Company



## Company

- Saudi Paper Manufacturing Company is one of the leading high quality tissue paper manufacturers in the Middle East, with a capacity of more than 100,000 tons per year.
- The company creates a turn over of \$ 202 Mio with 2.000 employees



## Process Technology innovation

- All important business processes are now based on SAP ERP powered by SAP HANA Enterprise Cloud
- Manage supply chain proactively with real-time insights and deliver information in time for maximum decision-making benefit

## Solution

- SAP HANA® Enterprise Cloud
- SAP ERP powered by SAP HANA Enterprise Cloud for finance, manufacturing, supply chain management, human resources management, inventory management, and maintenance management

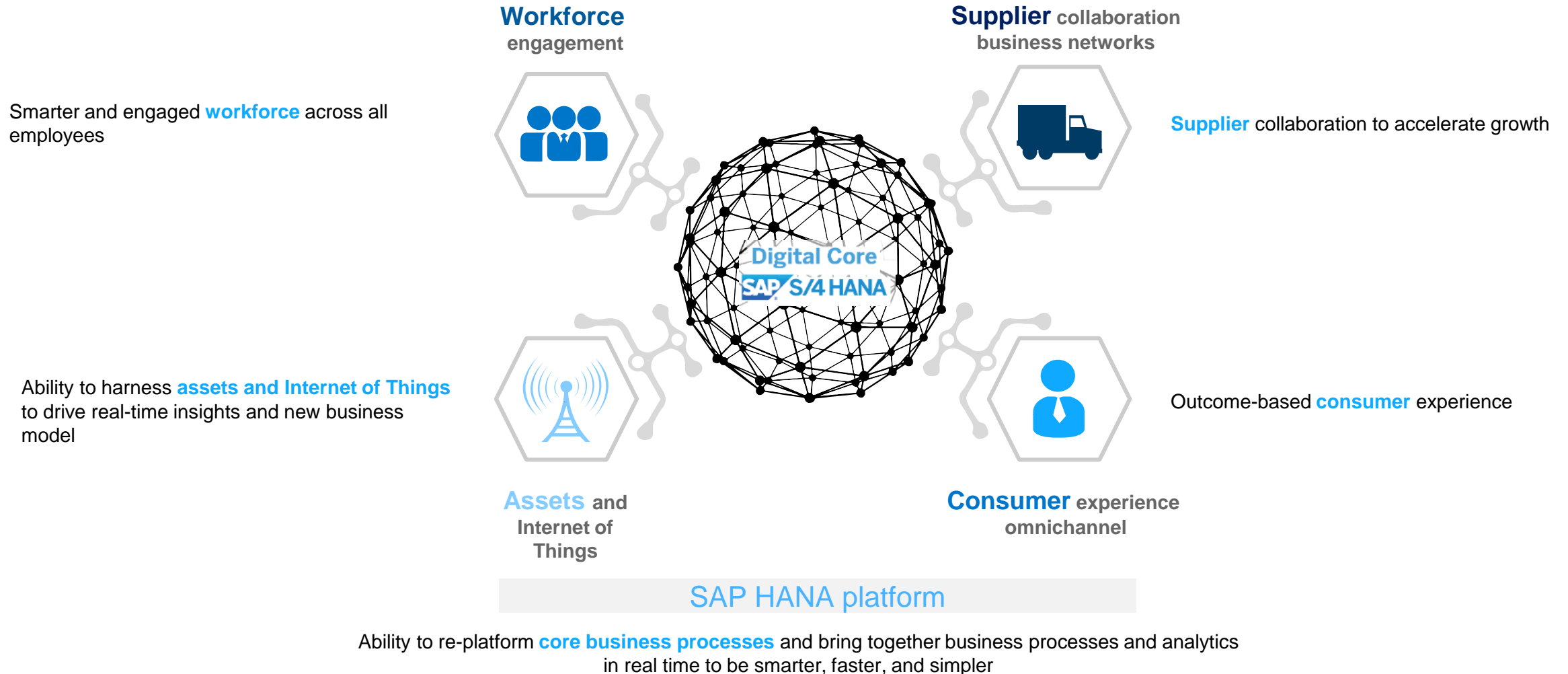


## Benefits & Next Steps

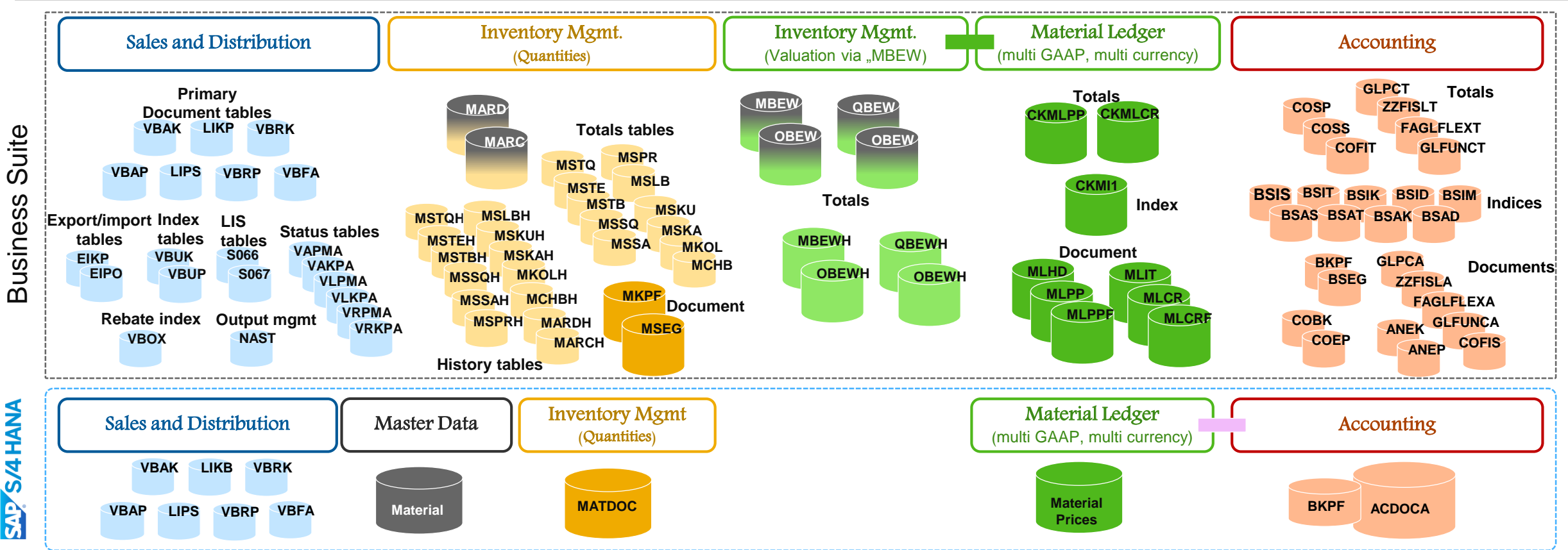
- Anticipated demand fluctuations and made adjustments that deliver the right products as expected – direct influence on profitability
- Improved data clarity and visibility
- 50% Lower IT costs with SAP HANA Enterprise Cloud
- 80% Faster adoption of new innovations
- Next will be the move to the SAP S/4HANA suite starting with S/4HANA Finance



# The digital value network interconnects all aspects of the value chain in real time to drive business outcomes



# S/4HANA Simplification – Example



## SIMPLE DATA MODEL

- » Only main tables remaining, no redundancies
- » Clear separation of master data from transactional data
- » Reduction of memory footprint

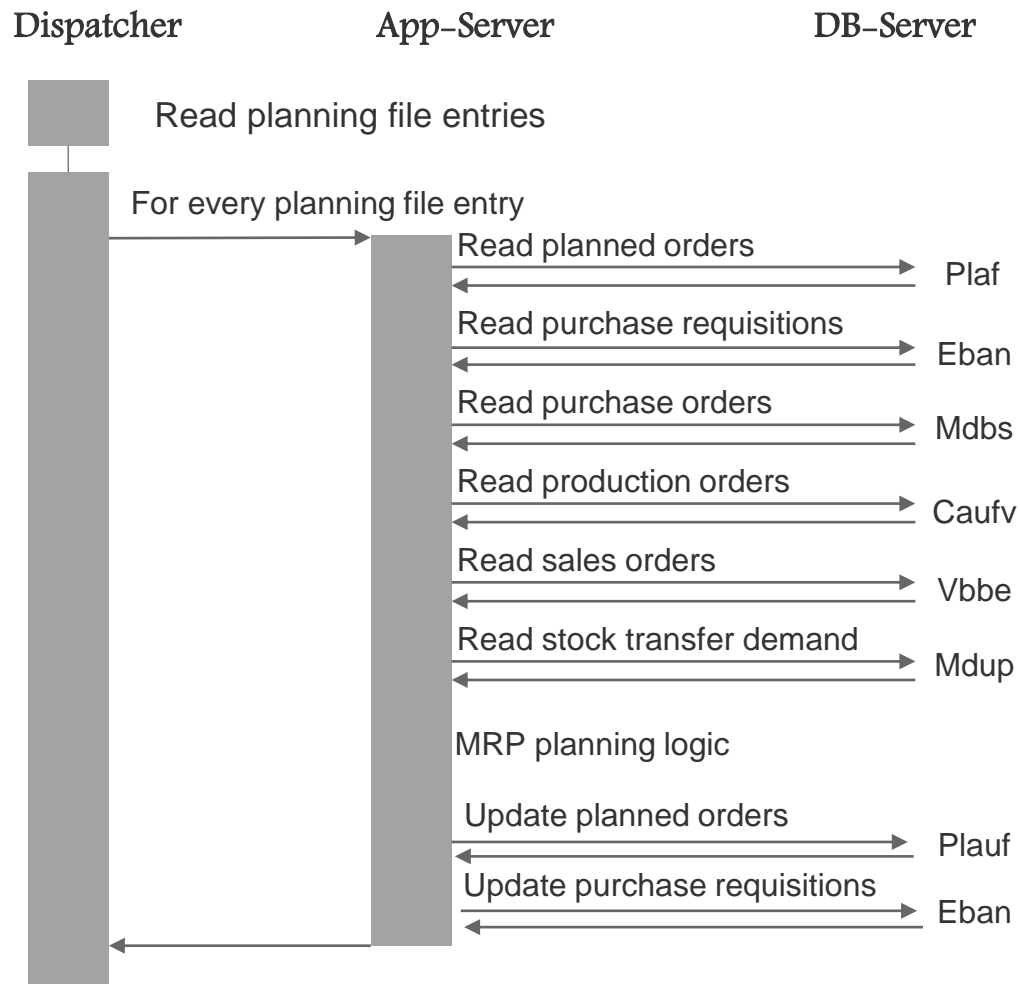
## PRINCIPLE OF ONE

- » Only one valuation method (Material Ledger) instead of 2 (IM + ML)
- » Flexible rebate management instead of cumbersome and expensive redundancies

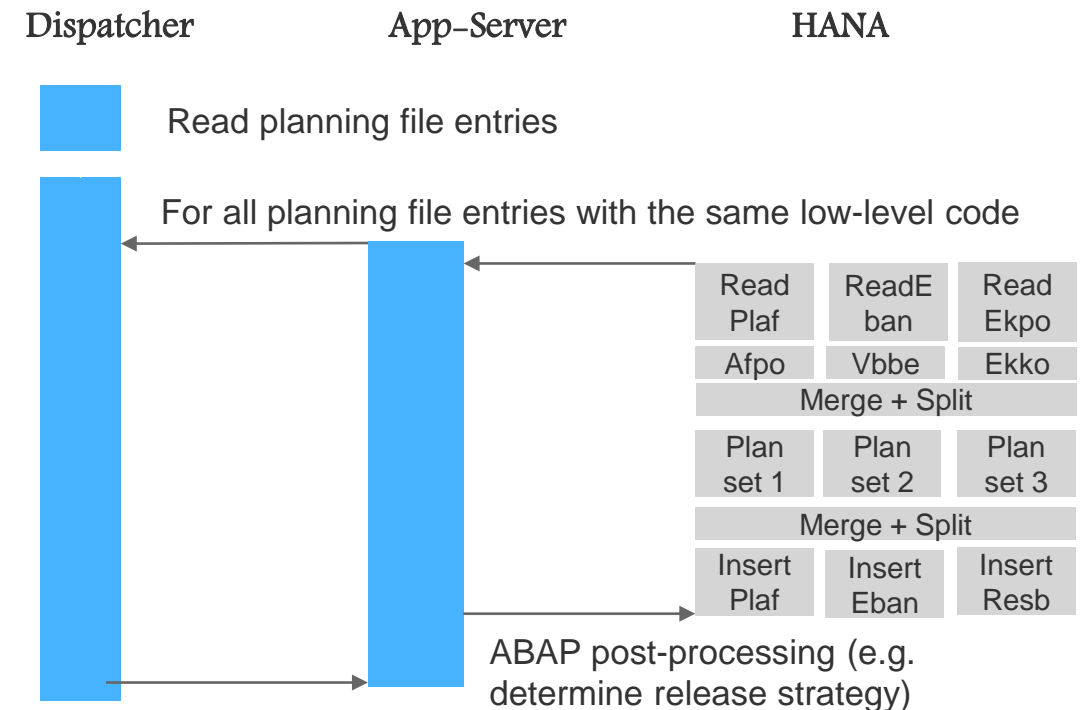
## THROUGHPUT INCREASE

- » INSERT only on database level (MM-IM), no locks for standard price valuation

# SAP S/4HANA coding simplification in manufacturing



**1.300 lines of code**



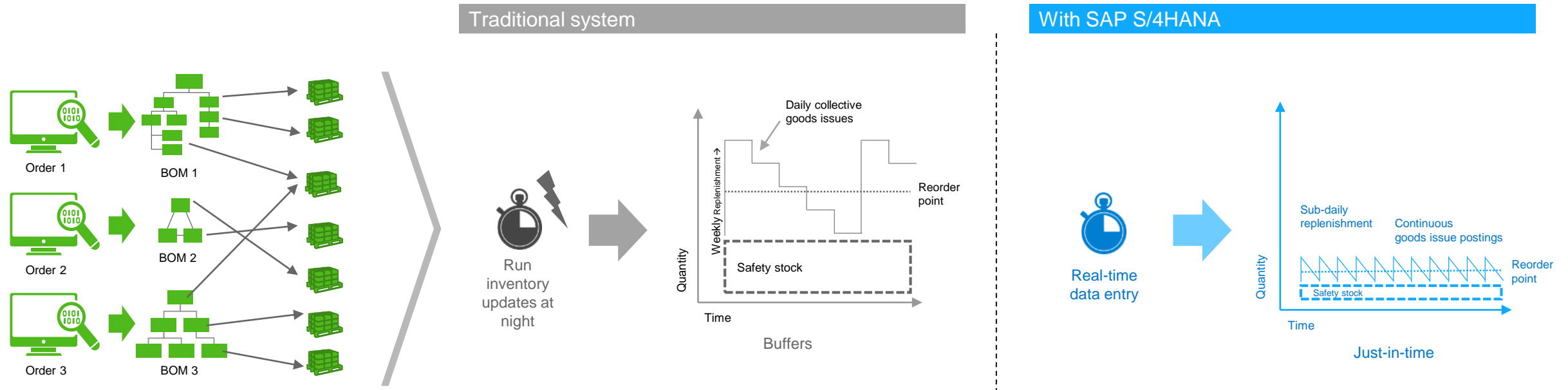
**~90 lines of code**

In the classic implementation, the application server calls the database server many times to read a lot of data. This data is then transferred from the database server to the application server. All tables are read sequentially one after another.

In the SAP S/4HANA Implementation, many tables are read in parallel using the parallelization capabilities. The data is not transferred back to the application server but used to compute material shortages directly in the database server.



# Business process view – high-volume inventory backflush



## Business process

- Production orders are based on BOMs
- Production confirmations capture progress w.r.t. components issued and activities provided
- Backflush automates confirmation postings in high-volume scenarios

## With traditional system

- Throughput limitations cause queuing of data entry
- Limited inventory visibility increases error rate and supply shortages (for example, sub-daily deviations)
- Best practices to increase safety stock

## With SAP S/4HANA

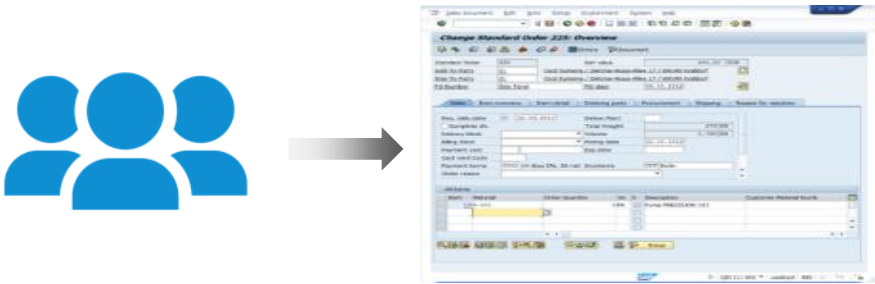
- Real-time inventory information, including early error detection.
- Capturing the lowest level of granularity in inventory stock keeping, including where-used information per unit (lot size 1)
- Drastic decrease of stock levels (safety stock)

# SAP Fiori UX, modern user experience and responsive design

## TODAY

Functional-based applications

**FROM:** One transaction for multiple roles with too much and complex functionality



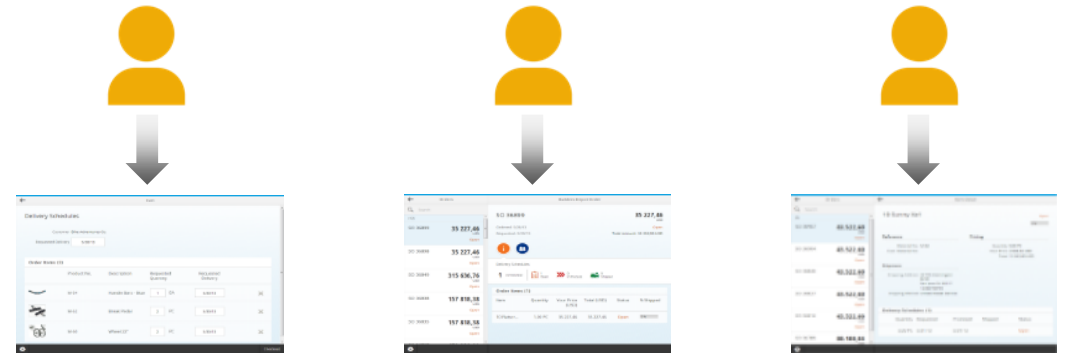
**FROM:** Multiple entry points for the user and inconsistent user experience



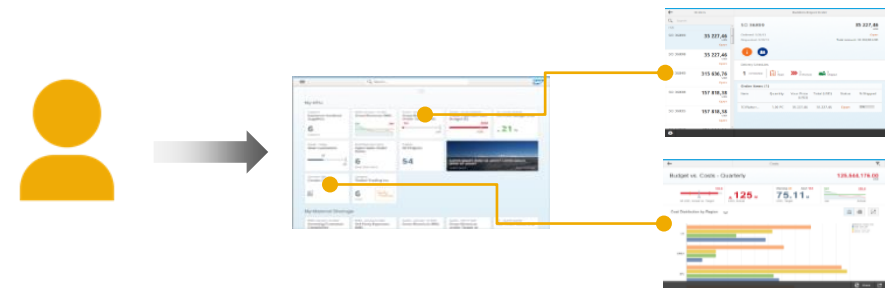
## TARGET

Role-based applications

**TO:** Decomposed apps for each role with simple functions



**TO:** One entry point for the User and UX following common design directions

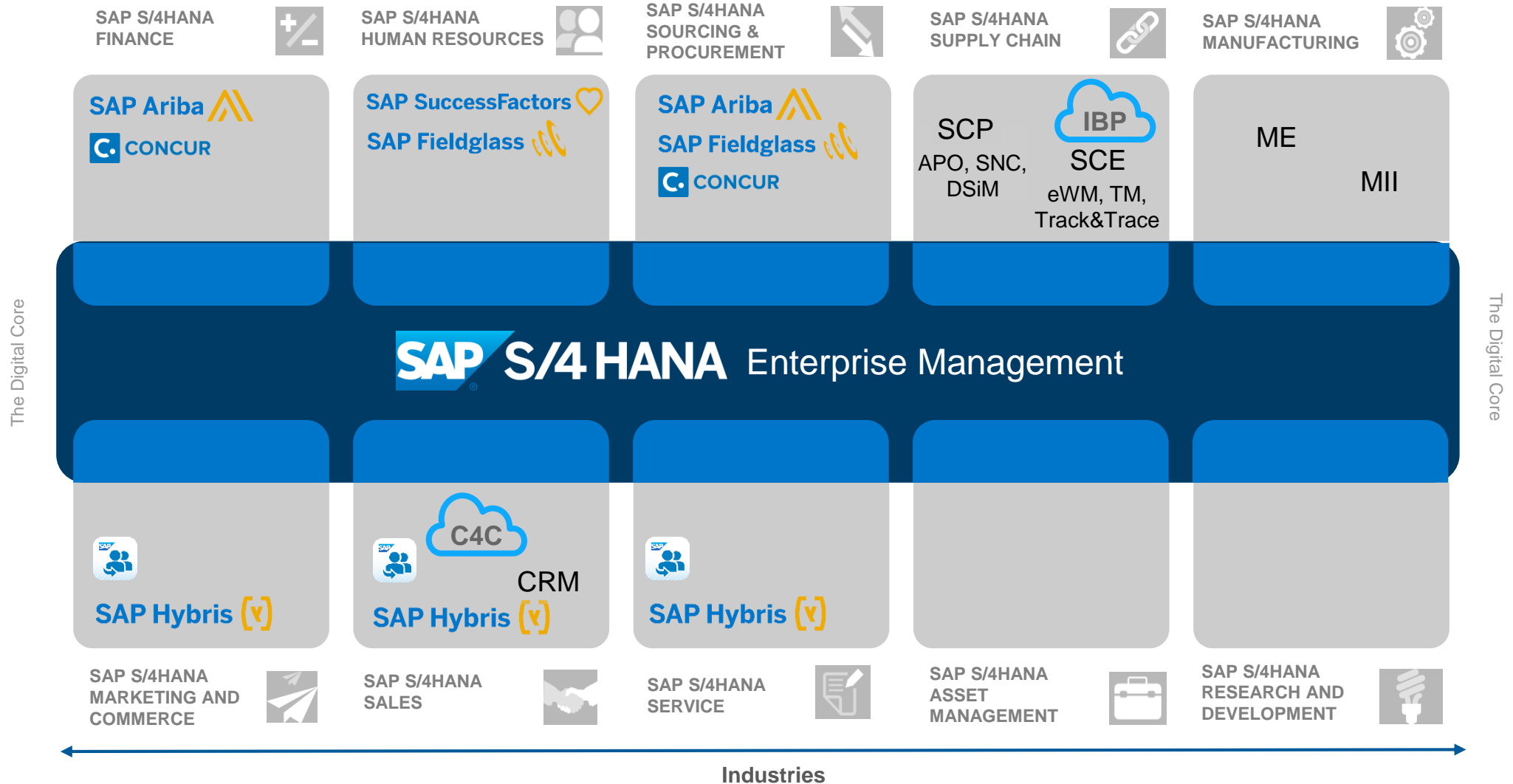


*This is the current state of planning and may be changed by SAP at any time.*

# SAP S/4HANA

## Introducing the next-generation core and lines-of-business solutions for the digital economy

- The **SAP S/4HANA lines-of-business (LoB) solutions** combine a modern and simplified core built on the SAP HANA platform with best-in-class LoB solutions and connection to business networks.
- These solutions are designed to **help meet the new requirements of lines of business in the digital economy**: real-time information on Big Data, personalized customer experiences, omnichannel, connected devices, people, and businesses.
- The LoB solutions can continue to be consumed as standalone solutions or as part of the SAP S/4HANA LoB solutions, **giving more choice to customers, allowing true hybrid scenarios and incremental deployments.**



# SAP S/4HANA Enterprise Management 1511 on-premise

Next-generation ERP

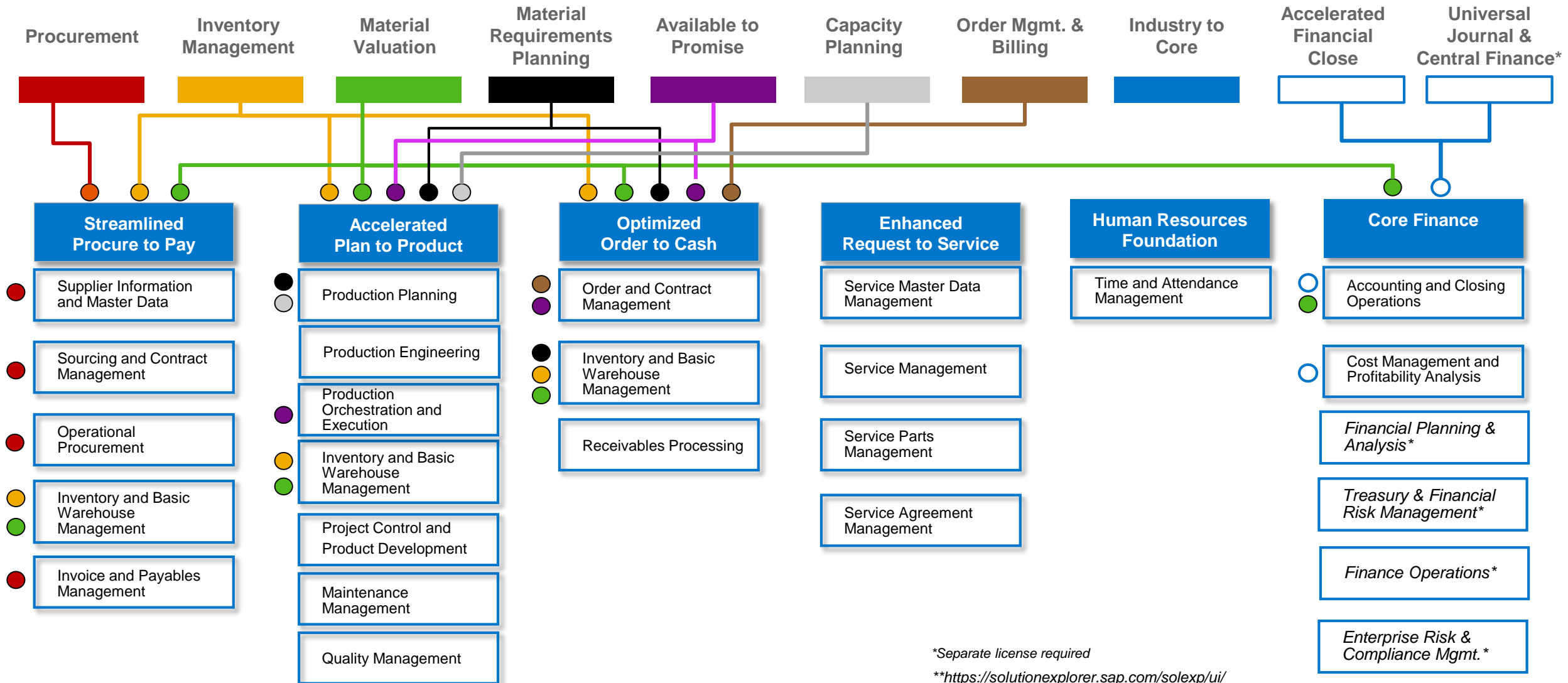
The diagram features the SAP S/4HANA logo at the top left. Below it, the text 'Enterprise Management' is displayed. The main content is divided into two columns: 'Modules' and 'Industries\*'. The 'Modules' column lists 13 modules in a grid: Logistics General (LO), Sales and Distribution (SD), Logistics Execution (LE), Plant Maintenance (PM), Production Planning & Control (PP), Environment, Health & Safety (EHS), Finance, Product Lifecycle Management (PLM), Materials Management (MM), Quality Management (QM), Customer Service (CS), Project System (PS), Others: Settlement Management, Global Trade Management, ..., and Human Resources. The 'Industries\*' column lists 'Core industries' (Chemicals, Life Sciences, Wholesale, High Tech, Mining, Industrial Machinery & Components) and 'Core Industries – adding features and processes' (Automotive\*\*, EC&O\*\*, A&D\*\*, Mill Products\*\*). A note at the bottom of the industries section states '\*\* New included in EM'. On the left side of the diagram, the text 'The Digital Core' is written vertically.

**Feature and function parity to SAP ECC 6.0x plus**

- major innovations in **Finance and Logistics**
- Inclusion of additional **industries** in the Core
- Detailed feature and function description in S/4HANA Enterprise Management Solution Explorer or S/4HANA Product Map
- Value and Innovation description

# SAP S/4HANA, on-premise edition 1511 FPS01

Key innovations mapped to Product Map\*\*

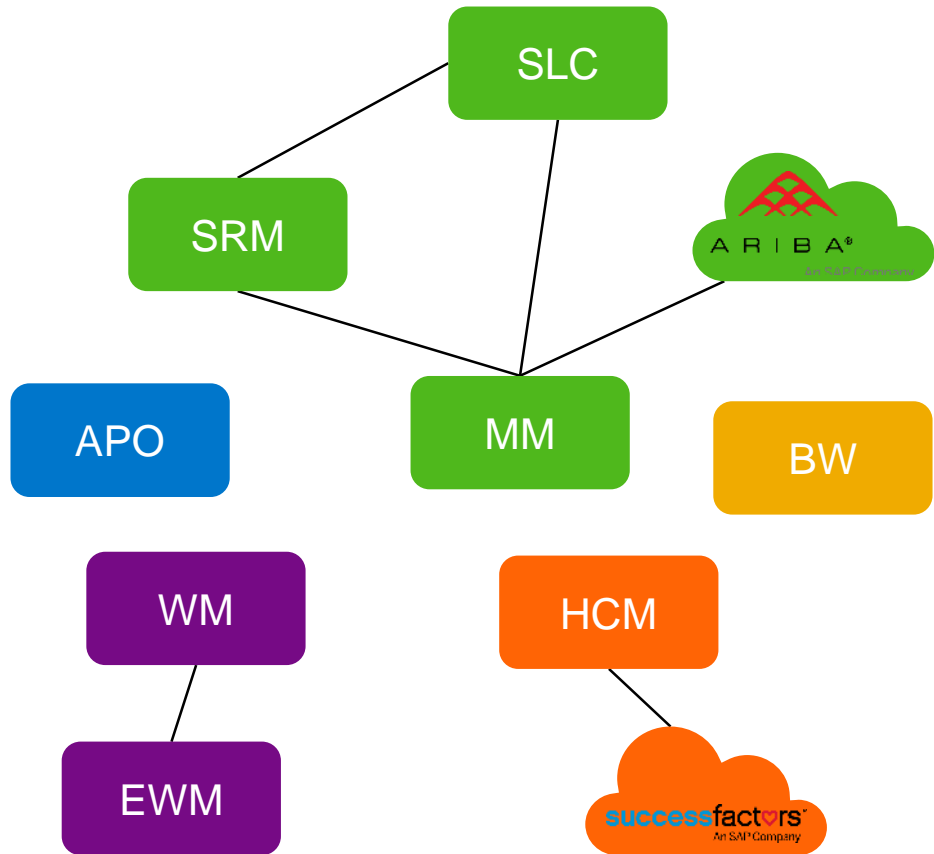


\*Separate license required

\*\*<https://solutionexplorer.sap.com/solexp/ui/>

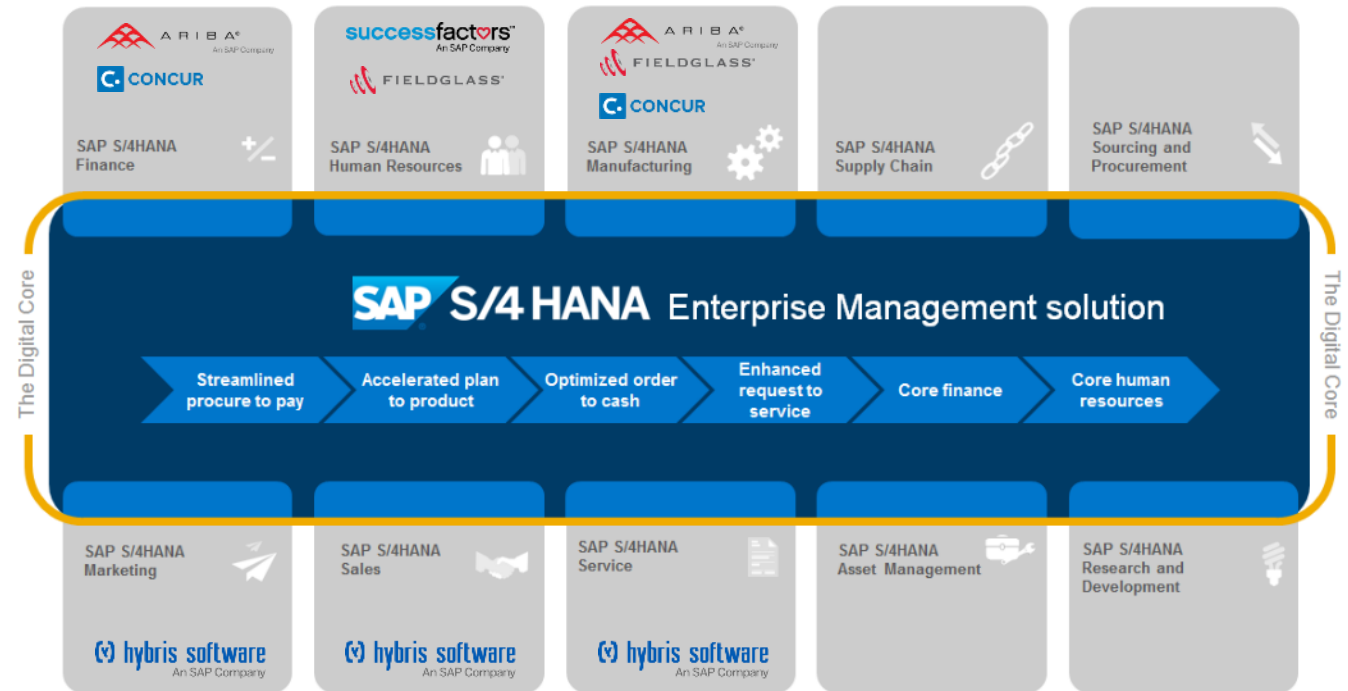
# SAP S/4HANA: The modular suite

## The great simplifier



Before

No complete picture. Only illustrative.



# SAP S/4HANA 1511<sup>1)</sup> On-Premise Industry Enablement Roadmap

All 25 Industries released for SAP S/4HANA with SAP S/4HANA Finance<sup>1)</sup>

## Industries

- Chemicals
- High-Tech
- Higher Education & Research
- Industrial Machinery & Components
- Insurance
- Life Sciences
- Mining
- Professional Services
- Sports & Entertainment
- Telco
- Travel & Transportation
- Wholesale

## Industries released with major coverage<sup>2)</sup>

- Aerospace & Defense
- Automotive
- Banking
- Consumer Products
- Defense & Security
- Engineering, Construction & Operations
- Mill Products
- Public Sector
- Utilities

Release of additional industry scenarios including Oil & Gas

+

First simplified industry Solutions e.g. Healthcare, Retail, Fashion Public Sector

Release of additional industry scenarios including Media

Solution today

Planned

Future

1) For restrictions related to S/4HANA Finance 1503, see SAP Note [2119188](#)

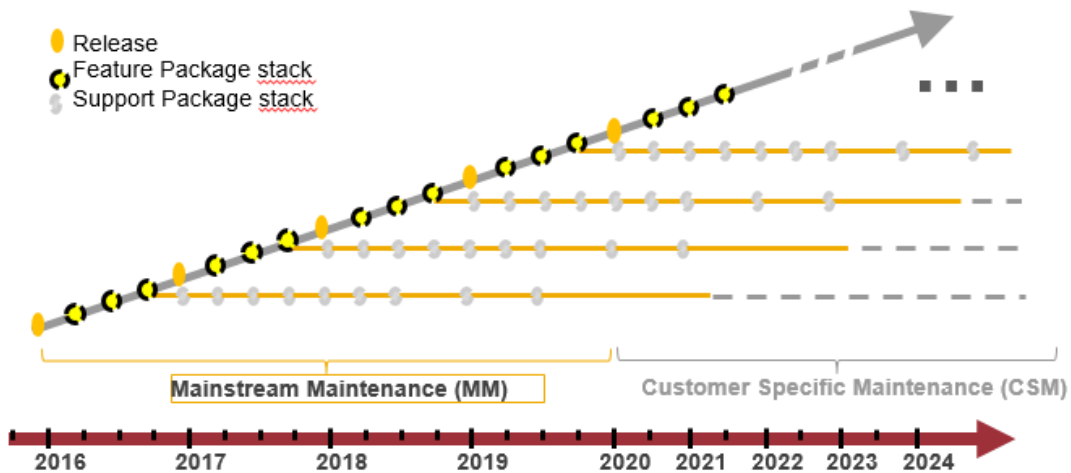
2) Limitations related to selected industry specific scenarios like CWM and DSD. See SAP Note [2214213](#) for details.

3) As of S/4HANA SP01 (released on February 3<sup>rd</sup> 2016)

# SAP S/4HANA on-premise Release and Maintenance Strategy

## Key message

1. SAP S/4HANA follows fast-cycle innovation driven by cloud principles along **one joint cloud/ on-premise** innovation code line
2. SAP S/4HANA on-premise release strategy follows the SAP releases and maintenance model with quarterly shipment of service packs and yearly releases



## One Innovation Code Line

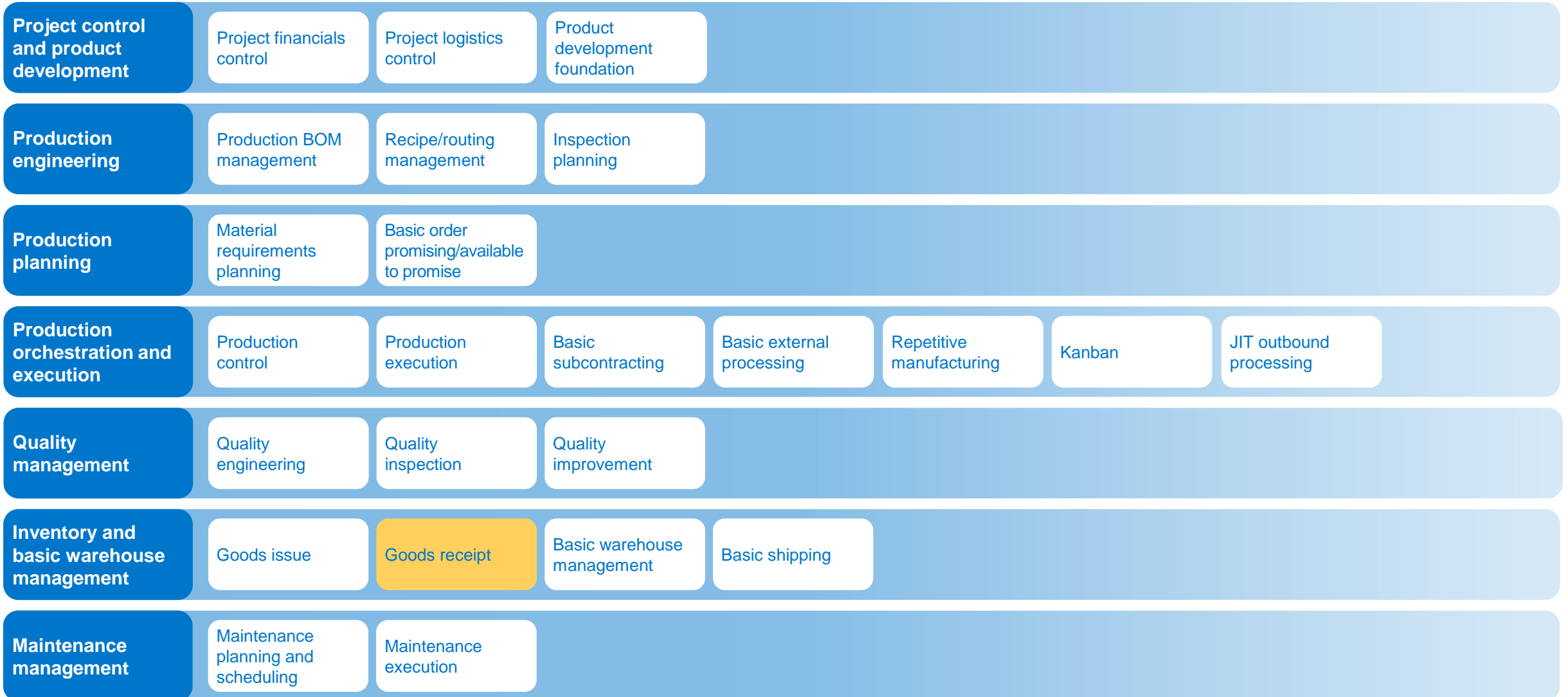
- ❖ One major delivery per year (release) consolidation all new features and fixes. In general to be expected in Q4
  - ❖ Quarterly deliveries (service package) which will contain fixes and could contain features. General guideline:  
Q2: new features (Feature Package Stack)  
Q1/Q3: Fixes (Support Package Stacks)
  - ❖ Support Package Stacks in maintenance only phase
  - ❖ Scope of mainstream maintenance and customer specific maintenance phases keep as is
- ...
- ❖ Focus on fast-cycle innovation deliveries – fits to market requirements and SAP company strategy
  - ❖ Similarity to cloud approach of SAP S/4HANA Cloud



# SAP S/4HANA Enterprise Management, on-premise edition

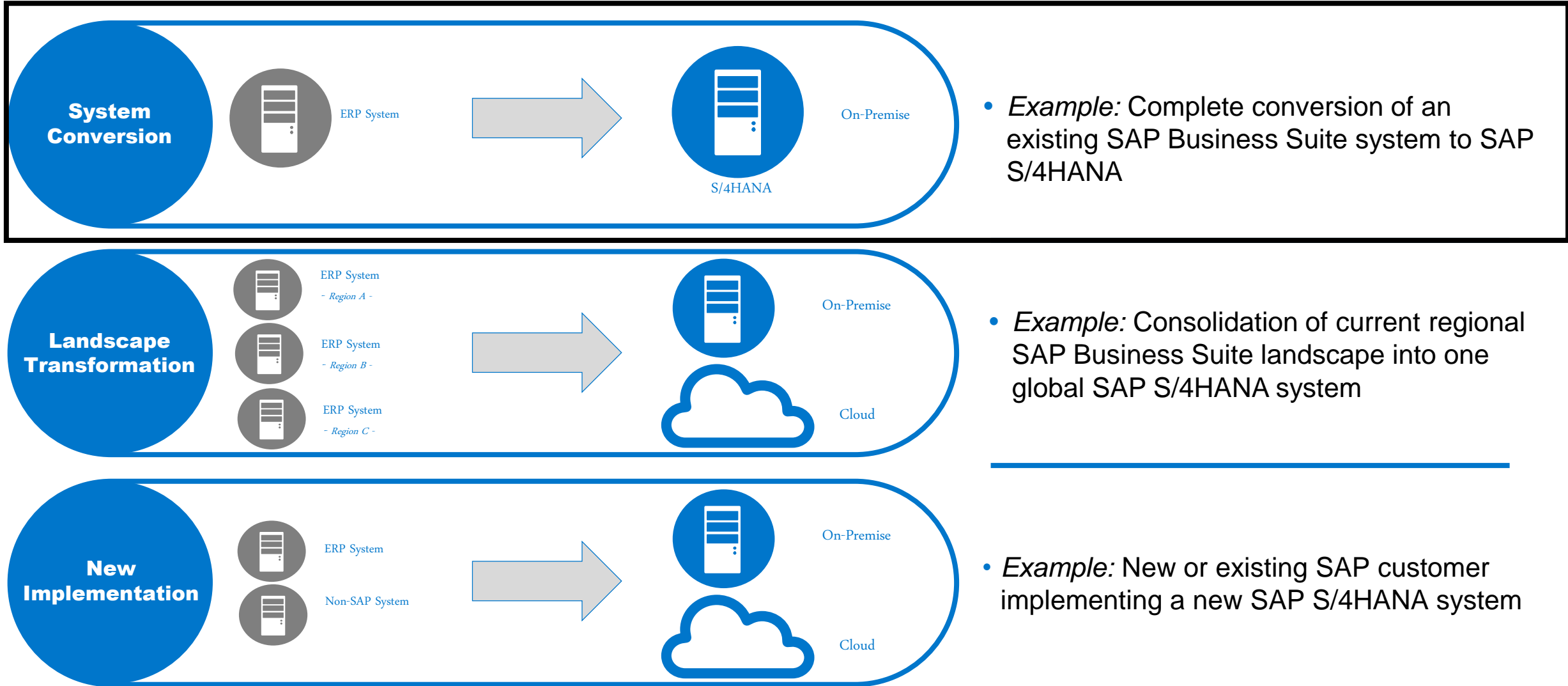
## Delta Scope Description

[Link to Document in PartnerEdge >>](#)



# The Move to SAP S/4HANA

## The Transition Scenarios



# Call-to-Action

---

- **Digital Enterprise is reality for large and for small companies; for net new and installed base customers**
- **Educate yourself - leverage SAP Learning, use SAP S/4HANA PartnerEdge**
  - SAP S/4HANA Solution Explorer >>
  - SAP S/4HANA - Innovation- & Value Discovery (LoB & industry) >>
  - SAP S/4HANA Roadmap >>
  - S/4HANA Simplifications and Improvements >>
  - S/4HANA Delta Scope >>
- **Transition customers now – don't wait for others to do it!**

# Thank you



**Claus Grünewald**

Global Vice President

S/4HANA Go-to-Market

 [claus.gruenewald@sap.com](mailto:claus.gruenewald@sap.com)

 @grumewat

 <https://www.linkedin.com/in/clausgruenewald>