




McEwan Fraser Legal

Solicitors & Estate Agents

01463 211 116

The Poste House

SKEABOST BRIDGE, PORTREE, IV51 9NP



SKEABOST BRIDGE

PORTTREE, IV51 9NP

The Poste House is a B listed house situated along the banks of the River Snizort. The property is located approximately 10 minutes' drive from Portree by car making it an ideal country location to enjoy the peace and quiet of the countryside but still being within easy reach of local facilities. Portree the capital of Skye offers a full range of facilities from shops, restaurants and bars to sporting facilities as well as primary and secondary schools, a community swimming pool and a public library. The Isle of Skye is world famous and well known for its welcoming and friendly communities.

The location of The Poste House offers a great base for exploring the outstanding beauty of the Island, including attractions like, the Old Man of Storr, Kilt Rock and the Quiraing to the north and, to the south, the imposing Cuillin Mountains which offer both gentle and challenging climbing and walking for the world's outdoor enthusiasts. The property borders the fast flowing River Snizort, which provides excellent salmon and trout fishing. The fine Skeabost Hotel is a short walk which has its own nine-hole, 18 tee golf course. Perfect also for those who appreciate the beautiful scenery and a more relaxed way of life, there is a wide range of local activities and pastimes, from water sports and hiking to photography and painting all of which are accessible close by.

This part of the Highlands is also easily accessible to travellers from further afield via Inverness airport. There are also flights available from the central belt of Scotland to the Island airport which is located east of Broadford.





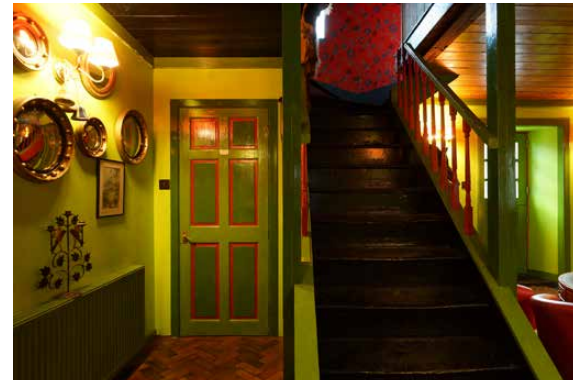
THE POSTE HOUSE

SKEABOST BRIDGE

The Poste House is a distinctive and substantial detached period property with a self-contained one bedroom bothy, the main house incorporates a blend of traditional and contemporary finishing's with many pleasing features on both floors. The accommodation is generous and has been improved on over the years to provide flexible comfortable living. The current owners have ensured that the house retains its character and features of the past, yet adding finishing touches that have added further uniqueness to this super property.

The history dates back to 1680s but it is believed there has been a property in this situation since the early 1500s. It was an important property being the only large house between Portree and Dunvegan, variously called 'The only house in the Glen', 'The rip off House' and most recently 'The Poste House'. It has had many reincarnations: a toll house for folks coming down Loch Snizort to sell their beasts in Portree, a change inn for meetings, trysts, weddings, a drover's stop for the cattlemen coming down from Dunvegan to sell their cattle and sheep at the mart, then a drover's inn, same principle but more whisky and fighting.

Then used as a stop for travellers, locals and very early tourists to Skye. Hence the name Poste House with reference to the transport of Poste Chaises. More recently 1950s onwards it was a tweed shop and public house. It is situated beside the banks of the River Snizort, Skye's only salmon river which in turn has been the site of bloody battles between the MacLeods and the MacDonalads (the house is on the Macleod side of the river!) and indeed there is a pool on the Snizort that is called 'The cauldron of the Heids' where, allegedly, the heads of the beaten clan members were tossed into.







Over the centuries, as the fortunes of the various owners of The Poste House improved, the house was extended with two extra wings and two outside stair entrances, these were converted into the boiler room and a kitchen annexe many years ago. When excavating a pond for ducks, loads of old bottles and general domestic paraphernalia were found hearkening back to the house's history of being a place of entertainment. There is a small self-contained bothy in the grounds which according to local knowledge was used to house the unmarried drovers.

The house is set on a large extended plot, the private entrance leads you to the large gravel driveway. The gardens are enclosed by border fences and provide a safe area for children and pets, there is an additional fenced area with a duck pond. There are plenty of seating areas and hard landscaping which provides ideal areas for outside entertainment. The garden has a good mixture of mature trees, flower beds, shrubs, plants and areas of lawn. With the relevant planning, the grounds would be ideal for additional lodges or pods.

ACCOMMODATION:

Ground Floor - Entrance porch, sitting room, living room with dining Area, large kitchen with utility area and WC Cloakroom.

First Floor - Landing, master bedroom with en-suite toilet, two further double bedrooms one of which has a dressing room/store room, a large family bathroom completes the first floor accommodation.

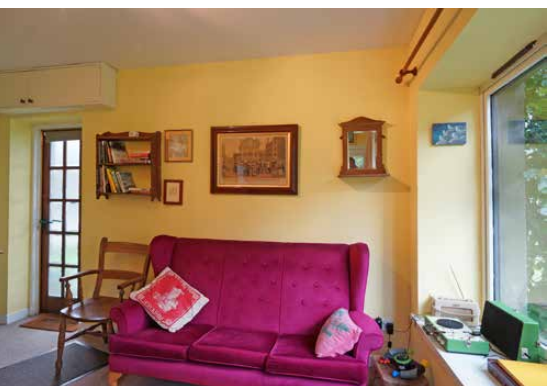
The Bothy - Sitting room with galley kitchen, shower room and one double bedroom.

KEY FEATURES:

- Includes a detached one-bedroom cottage of stone construction.
- Feature stone wall with large multi fuel burning stove
- Bespoke handmade farmhouse style kitchen, with underfloor heating and range cooker.
- Extended family bathroom with roll top bath and separate shower unit.
- Two comfortable lounge areas.
- Large gravel driveway with ample parking for numerous vehicles.
- Large garden plot of 2 acres or thereby.

A stunning country property which oozes character, a house you would be proud to call home. Early viewings are highly recommended and by appointment only.



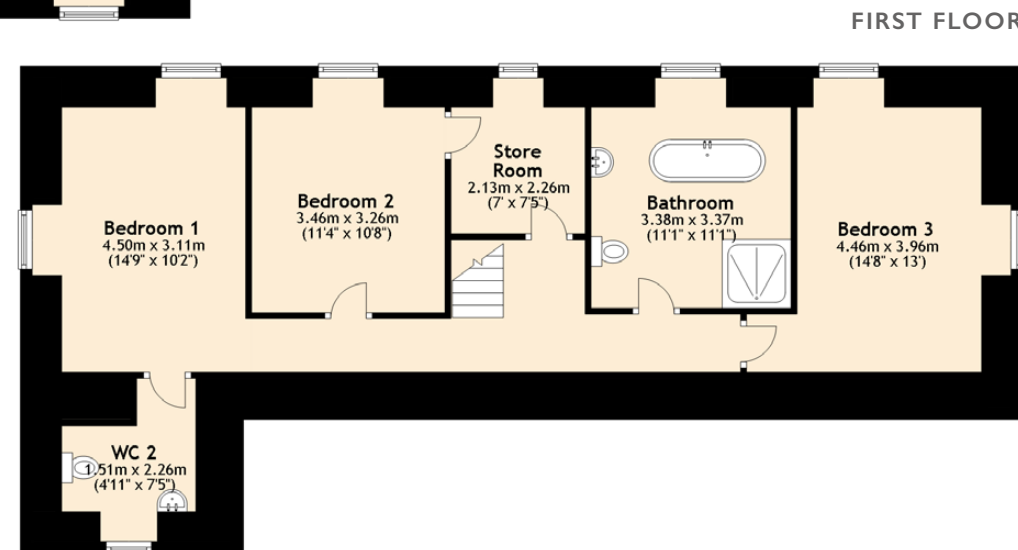
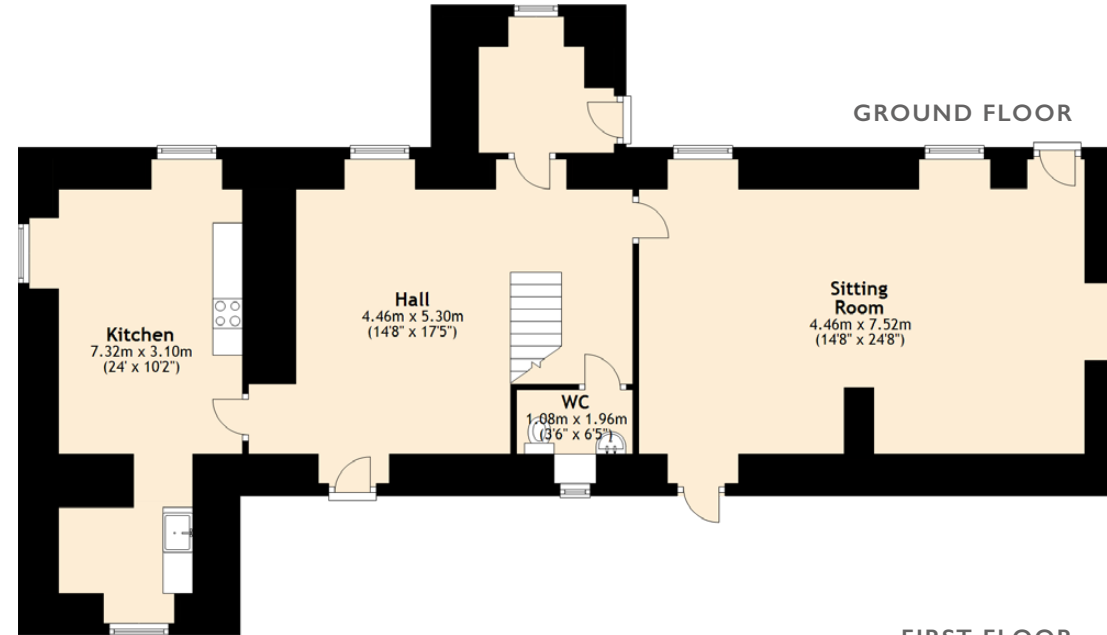


SPECIFICATIONS

FLOOR PLANS & LOCATION

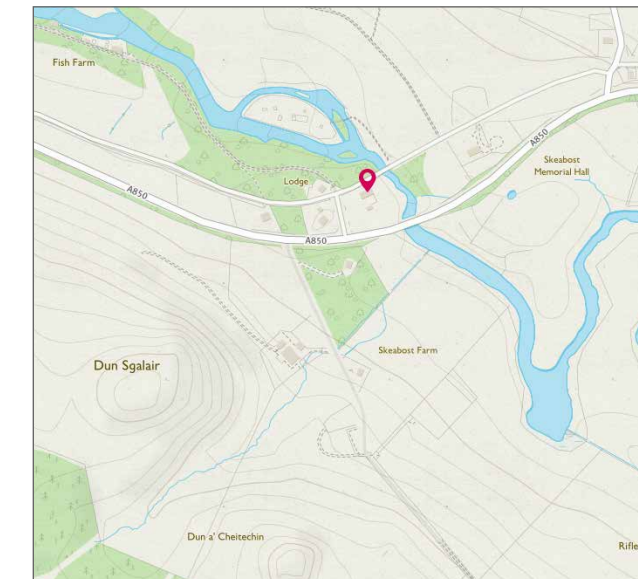
EXTRAS (INCLUDED IN THE SALE):

All fixed floor coverings and blinds where applicable, oil fired central heating, garden shed. Garden ornaments to be agreed by separate negotiation.

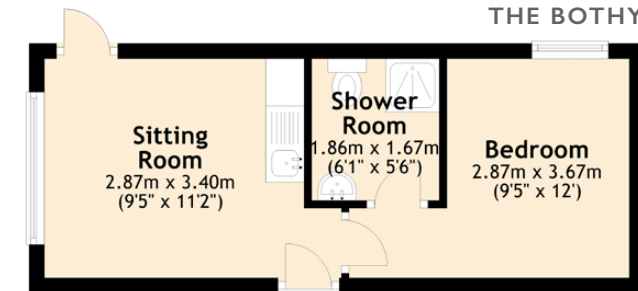


DIRECTIONS:

From the Skye Bridge, travel to Portree. Once on the outskirts of the village of Portree, take the Dunvegan Road A 850 and travel about seven miles to Skeabost, remembering to fork left at the junction for Dunvegan/Uig. The Poste House is two miles from this junction, situated on the right side of the road immediately after crossing the Snizort's bridge.



THE BOTHY





McEwan Fraser Legal

Solicitors & Estate Agents

Tel. 01463 211 116
www.mcewanfraserlegal.co.uk
info@mcewanfraserlegal.co.uk

Part
Exchange
Available

Disclaimer : The copyright for all photographs, floorplans, graphics, written copy and images belongs to McEwan Fraser Legal and use by others or transfer to third parties is forbidden without our express consent in writing. Prospective purchasers are advised to have their interest noted through their solicitor as soon as possible in order that they may be informed in the event of an early closing date being set for the receipt of offers. These particulars do not form part of any offer and all statements and photographs contained herein are for illustrative purposes and are not guaranteed or warranted. Buyers must satisfy themselves for the accuracy and authenticity of the brochure and should always visit the property to satisfy themselves of the property's suitability and obtain in writing via their solicitor what's included with the property including any land. The dimensions provided may include, or exclude, recesses intrusions and fitted furniture. Any measurements provided are for guide purposes only and have been taken by electronic device at the widest point. Any reference to alterations to, or use of, any part of the property does not mean that any necessary planning, building regulations or other consent has been obtained. A buyer must find out by inspection or in other ways that all information is correct. None of the appliances/services stated or shown in this brochure have been tested by ourselves and none are warranted by our seller or MFL.



Text and description
ANDREW REID
 Surveyor



Layout graphics and design
ALAN SUTHERLAND
 Designer