

Article

Sequencing of Organellar Genomes of *Nowellia curvifolia* (Cephaloziaceae Jungermanniales) Revealed the Smallest Plastome with Complete Gene Set and High Intraspecific Variation Suggesting Cryptic Speciation

Jakub Sawicki ^{1,*} , Katarzyna Krawczyk ¹ , Monika Ślipiko ¹  and Monika Szczecińska ²

¹ Department of Botany and Nature Protection, University of Warmia and Mazury in Olsztyn, Plac Łódzki 1, 10-727 Olsztyn, Poland; katarzyna.krawczyk@uwm.edu.pl (K.K.); monika.slipiko@uwm.edu.pl (M.Ś.)

² Department of Ecology and Environmental Protection, University of Warmia and Mazury in Olsztyn, Plac Łódzki 3, 10-727 Olsztyn, Poland; monika.szczecińska@uwm.edu.pl

* Correspondence: jakub.sawicki@uwm.edu.pl

Abstract: The leafy liverwort *Nowellia curvifolia* is a widespread Holarctic species belonging to the family Cephaloziaceae. It is made up of a newly sequenced, assembled and annotated organellar genomes of two European specimens, which revealed the structure typical for liverworts, but also provided new insights into its microevolution. The plastome of *N. curvifolia* is the second smallest among photosynthetic liverworts, with the shortest known inverted repeats. Moreover, it is the smallest liverwort genome with a complete gene set, since two smaller genomes of *Aneura mirabilis* and *Cololejeunea lanciloba* are missing six and four protein-coding genes respectively. The reduction of plastome size in leafy liverworts seems to be mainly impacted by deletion within specific region between *psbA* and *psbD* genes. The comparative intraspecific analysis revealed single SNPs difference among European individuals and a low number of 35 mutations differentiating European and North American specimens. However, the genetic resources of Asian specimen enabled to identify 1335 SNPs in plastic protein-coding genes suggesting an advanced cryptic speciation within *N. curvifolia* or the presence of undescribed morphospecies in Asia. Newly sequenced mitogenomes from European specimens revealed identical gene content and structure to previously published and low intercontinental differentiation limited to one substitution and three indels. The RNA-seq based RNA editing analysis revealed 17 and 127 edited sites in plastome and mitogenome respectively including one non-canonical editing event in plastid *chlL* gene. The U to C editing is common in non-seed plants, but in liverwort plastome is reported for the first time.

Keywords: *Nowellia curvifolia*; plastome; mitogenome; intraspecific variation; cryptic speciation; RNA editing



Citation: Sawicki, J.; Krawczyk, K.; Ślipiko, M.; Szczecińska, M. Sequencing of Organellar Genomes of *Nowellia curvifolia* (Cephaloziaceae Jungermanniales) Revealed the Smallest Plastome with Complete Gene Set and High Intraspecific Variation Suggesting Cryptic Speciation. *Diversity* **2021**, *13*, 81. <https://doi.org/10.3390/d13020081>

Academic Editor: Eric Buffetaut
Received: 21 January 2021
Accepted: 11 February 2021
Published: 15 February 2021

Publisher's Note: MDPI stays neutral with regard to jurisdictional claims in published maps and institutional affiliations.



Copyright: © 2021 by the authors. Licensee MDPI, Basel, Switzerland. This article is an open access article distributed under the terms and conditions of the Creative Commons Attribution (CC BY) license (<https://creativecommons.org/licenses/by/4.0/>).

1. Introduction

Organellar genomes of early land plants are known from their stable structure and almost identical gene order present in all main evolutionary lineages [1–5], which include complex thalloids, simply thalloids, leafy and early divergent leafy liverworts from the order Treubiales and Haplomitriales. Despite the fact that the organellar genomes of model liverwort *Marchantia polymorpha* were among first sequenced plant plastomes [6] and mitogenomes [7], the number of complete genomes sequences was very limited, till the end of the second decade of XXI century, when several paper were published significantly expanding our knowledge about evolutionary dynamics of these molecules [2–5]. The current genomic resources comprise 61 mitogenomes and 59 plastomes complete sequences, but many liverwort families do not have their representatives.

Among all known liverwort chloroplast genomes, the typical structure is present including large single copy unit (LSC) and small single copy unit (SSC), which are sep-

arated by two inverted repeats (IRs), however the plastome size and GC content differ among lineages.

The smallest plastome (108,007 bp) was found in mycoheterotrophic *Aneura mirabilis* [8], while the largest one (128,728 bp) in the early divergent *Haplomitrium blumei* [4]. The plastome of the latter species also shows the highest GC-content, with 44.4%, whereas the lowest GC-content (28.2%) was found in the plastid genome of the complex thalloid *Conocephalum salebrosum* [9].

The structural changes of plastomes are mainly limited to small rearrangements at borders of inverted repeats and single copy regions, which lead to IR expansion [4,7] or losing of six genes by a pseudogenization in mycoheterotrophic species [6]. The gene content of plastome units is conserved in almost all known liverworts, with exception of *Conocephalum conicum* where two genes, *rps7* and *rps12* were transferred from LSC to IR [9].

Apart from vascular plants the liverwort mitogenomes are structurally stable, with only one known exception of *Gymnomitrium concinnatum*, where two recombination events appear [10]. This stability seems to be associated with the lack of a repetitive sequence in the mitogenomes of early land plants, which are common in seed plants [1]. However, in the case of the species mentioned above, the number of repeats is lower than in other liverworts. The other differences in liverwort mitogenome structures include changes of an intron content in leafy liverwort lineage [3,11] and presence of the *nad7* gene in early divergent Treubiales and Haplomitriales [3,12].

The leafy liverwort *Nowellia curvifolia* (Dicks.) Mitt. belongs to the family Cephaloziaceae, which includes 17 genera. The genus *Nowellia* has been resolved by phylogenetic studies as a sister to *Cephalozia* [13]. *Nowellia* is a small genus, which includes only two species: *N. curvifolia* widespread in Holarctic and *N. wrightii* endemic to Cuba. *N. curvifolia* grows on rotting logs in forests and produces up to 20 mm long shoots, which are green in the shade and red in the sunny condition. The morphology of *N. curvifolia* is very characteristic by its inflated leaves with two long, narrow, incurved lobes ended with long, slender teeth [14]. The well-developed morphological features are one of the reasons of overlooked cryptic diversity, which often lead to description of new species [15–17]. Despite recent publication of several papers dealing with liverwort plastomes [4,5,9,10,18], the GenBank entries didn't include any representative of the Cephaloziaceae family.

In the present study, we sequenced, assembled and characterized organellar genomes of two *N. curvifolia* specimens from Europe. Obtained genomes were compared to close relatives of *Nowellia* and to shed some light on intraspecific variation of these molecules. We also report the first complete plastome sequences of a member of the Cephaloziaceae family.

2. Materials and Methods

The specimen details, including herbarium number and locality are given in Supplementary Table S1. The DNA was extracted using the Qiagen Plant Mini-kit (Qiagen, Hilden, Germany) from a fresh material from two European localities collected in silica gel bags. One branched individual was ground with silica beads in a MiniBead-Beater homogenizer for 50 s and subsequently processed according to the manufacturer protocol. DNA quantity was estimated using the Qubit fluorometer and Qubit™ dsDNA BR Assay Kit (Invitrogen, Carlsbad, NM, USA). DNA quality was checked by electrophoresis in 0.5% agarose gel stained with Euryx Simple Safe (Eurx, Gdańsk, Poland).

The genomic libraries were constructed with Qiagen FX DNA kit (Qiagen) and were sequenced using HiSeqX (Illumina) to generate 150 bp paired-end reads at Macrogen Inc. (Seoul, Korea) with 350 bp insert in size between paired-ends. Afterwards, sequencing reads were cleaned by removing the adaptor sequences and low quality reads with Trimmomatic v0.36 [19]. Trimmed reads were assembled using NOVOplasty 4.2 [20] with previously published *Nowellia curvifolia* (MK230952) mitochondrial, and *Calypogeia integris-tipula* chloroplast (MK293997) reference genomes, respectively. The GeSeq software was used for annotation of organellar genomes [21] and genome maps were drawn using OGDRAW web server [22]. The junctions between chloroplast inverted repeats and single copy

regions were visualized using IRscope software [23]. To assemble the third plastome of the individual used for MK230952 assembly, SSR8246023 archive was used. The specimens details, including GenBank accession numbers of newly assembled genomes are given in Supplementary Table S1.

As the backbone of phylogenetic analysis we used plastid CDS alignment from studies on Ptilidiales [24]. Existing dataset, which includes a set of plastid *Nowellia curvifolia* genes from Asian specimens, was expanded by adding CDS from three newly assembled plastomes (two from Europe and one from North America). To keep a congruence with a previous study, we applied Maximum Likelihood and Bayesian inference methods using RAxML [25] and MrBayes [26] with parameters used during studies on Ptilidiales [19].

The RNA-seq library of *Nowellia curvifolia* (Accession number SRR8202183) was mapped onto organellar genomes using Geneious 2020 software [27] and the alignment mismatches with variant frequency >0.50 were subsequently compared with the RNA editing sites predicted by PREPACT 3.12.0 [28].

3. Results and Discussion

3.1. The Characteristics of *Nowellia curvifolia* Plastome

Newly sequenced and assembled plastomes are 114,423–114,469 bp long and their structure is typical for other known liverwort genomes (Figure 1). The overall length of *Nowellia curvifolia* plastome is the shortest among its closest relatives with known complete genome sequences: *Scapania ampliata* (NC_051002.1: 118,026 bp) and *Douinia plicata* (NC_051003.1: 118,797 bp).

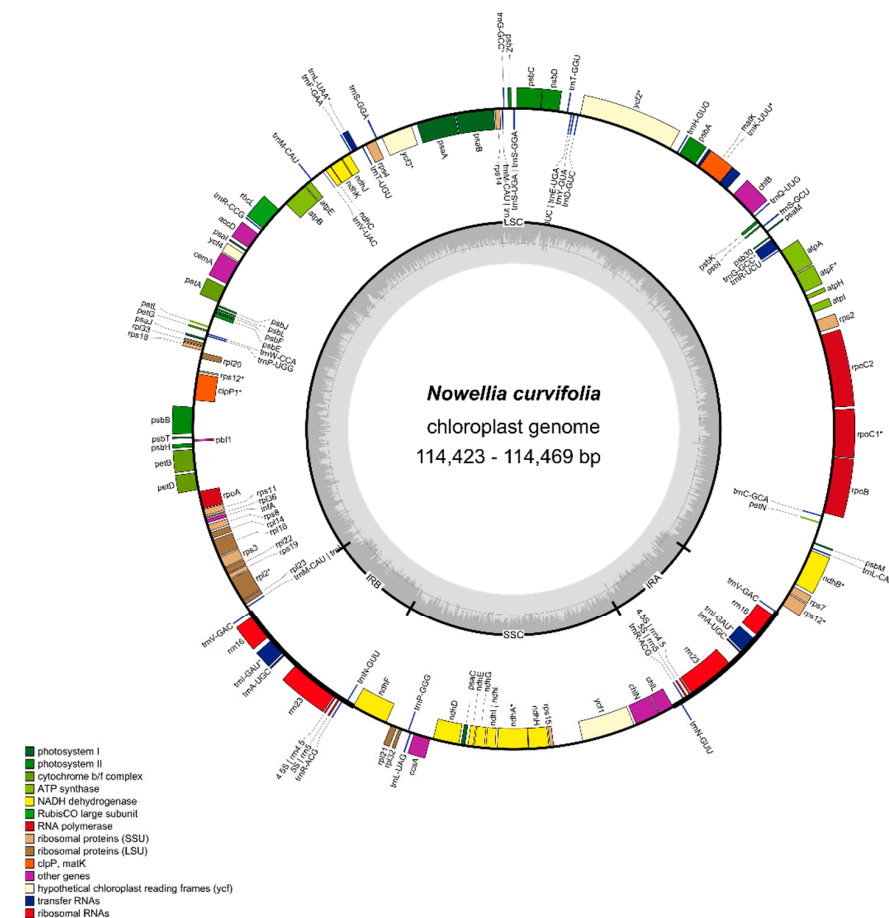


Figure 1. Gene map of the chloroplast genome of *Nowellia curvifolia*. Genes inside and outside the outer circle are transcribed in counterclockwise and clockwise directions, respectively. The genes are color-coded based on their function. The inner circle visualizes the G/C content.

The reduction of plastome length is splitted among all four regions (Supplementary Figure S1): detected IRs were 8086 bp (8870 bp and 9022 bp in *Scapania*, and *Douinia*, respectively), LSC is 79,341–79,293 bp (80,850 bp and 81,142 bp in *Scapania* and *Douinia* respectively) and SSC is 18,956 (19,436 bp and 19,611 bp in *Scapania*, and *Douinia*, respectively). Considering all known complete liverwort plastome sequences, *Nowellia* chloroplast genome is the third smallest one, with *Cololejeunea lanciloba* second (108,674 bp) and mycoheterotrophic *Aneura mirabilis* with the smallest genome among liverworts (108,007 bp). The biggest difference among these three species is the length of SSC, which is 13,974 bp and 14,268 bp in *A. mirabilis* and *C. lanciloba* respectively, in the latter caused by the deletion of the *ndhF-ccsA* region. The differences in LSC length are much smaller (77,553 bp in *A. mirabilis* and 78,204 bp in *C. lanciloba*), but the IRs of *N. curvifolia* plastome are the shortest among known liverwort chloroplast sequences, passing *C. lanciloba* by 15 bp.

The reduction of plastome length in leafy liverworts is often caused by deletions around the *ycf2* gene [10]. The region between *psbA* and *psbD* genes contains, besides the previously mentioned *ycf2* gene, four tRNAs: *trnH*-GUG, *trnD*-GUC, *trnY*-GUA and *trnE*-UCC, and in the case of *Nowellia* and *Scapania* this region is 1797 bp shorter in the former. Keeping in mind that the total difference in LSC length between these species is 1509 bp, the role of this region in plastome length reduction is leading.

As in the closest known relatives with a plastome sequence mentioned above, the plastome of *N. curvifolia* consists of 121 unique genes, including 81 protein-coding genes, 6 genes of unknown function (*ycf* genes), 4 ribosomal RNAs and 30 transfer RNAs (Supplementary Table S2). The gene order and content seem to be stable in the most of leafy and simple thalloid liverworts [4,5,10,18,29,30], with some exceptional gene deletions as in the mentioned above *Cololejeunea lanciloba* [4] or mycoheterotrophic *A. mirabilis* [8].

3.2. The Characteristics of *Nowellia curvifolia* Mitogenome

The newly sequenced *Nowellia curvifolia* mitogenomes are 148,199 bp long (Figure 2) and are slightly longer than the closest related species with a known mitogenome structure: *Scapania ampliata* (143,664 bp) and *Scapania ornithopodioides* (142,992 bp). Both mitogenomes contain a typical liverwort set of genes, including 42 protein-coding genes, 25 tRNA and three rRNA genes. The gene order and intron content is the same as in *Calypogeia* species, but the closest relatives with known mitogenome sequences - representatives of the genus *Scapania* (*S. ampliata* and *S. ornithopodioides*) lack intron 8 (*cox1i1116g1*) of *cox1* gene (Figure 3). The losses of introns in leafy liverworts lineage seem to be common and it is probably done via retroprocessing [3,11].

However, the loss of an intron alone does not explain the almost 5k bp-difference in mitogenome length between *Nowellia* and *Scapania*, since the size of the intron *cox1i1116g1* ranges 1.6–1.8 kb in Jungermanniales. The reduction or increase of mitogenome length in leafy liverworts is often caused by deletions between genes *nad3* and *rpl10*. This region contains the pseudogenized *nad7* gene and four tRNAs: *trnV*-UAC, *trnD*-GUC, *trnS*-GCU and is a main source of mitogenome size variation among in *Nowellia* and its relatives. In *Nowellia* mitogenome the distance between *nad3* and *rpl10* gene is 17,620 bp and in *Scapania* species ranged from 8350 bp to 8364 bp. Moreover, the length of this region in *Nowellia* is even longer than in the genus *Calypogeia* (ca. 14.5 kb), which mitogenomes are significantly bigger with ca. 163 kb [11]. The described patterns are similar to those found in results of comparative analysis of *Nowellia* and its close relatives.

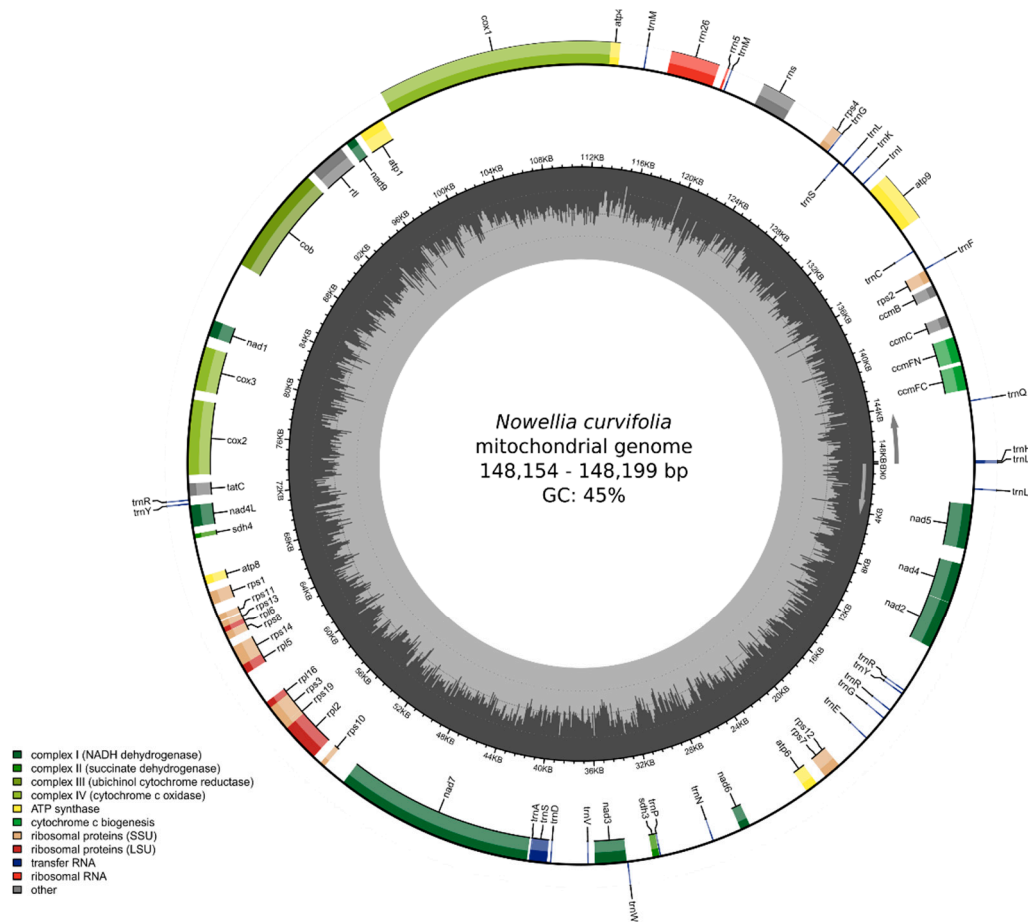


Figure 2. Gene map of the mitochondrion of *Nowellia curvifolia*. Genes inside and outside the outer circle are transcribed in counterclockwise and clockwise directions, respectively. The genes are color-coded based on their function. The inner circle visualizes the G/C content.



Figure 3. The main sources of mitogenome length variation among *Nowellia* and its close relatives: 1—*Calypogeia integristipula*, 2—*Nowellia curvifolia*, 3—*Scapania ornithopodioides*, 4—*Scapania ampliata*. (A)—intron reductions in *cox1* gene; (B)—deletion in region between *nad3* and *rpl10*.

3.3. Intraspecific Variation of *Nowellia curvifolia* Organellar Genomes

The variation of organellar genomes among tested European samples was low. The mitogenomes and plastomes of both sequenced samples were almost identical and differed in only one SNP in the intergenic spacer *atp1-cox1* (mitochondrial) and *rps4-trnM-CAU* (plastid). Newly sequenced mitogenomes were longer than mitogenome of North American sample available in Genbank (accession number MK230952) due to three indels: 2 bp long in *trnN-GUU* and *trnP-UGG* spacer, 42 bp long in spacer between *rps14* and *rps8*, 1 bp long in intron 2 of *cob* gene. Only one substitution was found in *atp1-cox1* spacer in the case of the NCU specimen.

Comparative analyses of European and North American plastomes revealed presence of 35 SNPs and one 41bp long indel between *ndhJ* and *ndhK* genes. Almost half of detected SNPs were found in 12 protein-coding genes (Supplementary Table S2), but with exception of *ycf2* (4 SNPs), *rps7* (2 SNPs) and *chlL* (2 SNPs) remaining genes differed by single substitution. Since no Asian complete plastome was available, the comparative analysis of CDS revealed presence of 1335 SNPs unique for this sample (Supplementary Table S2). Top-five most variable genes include *rpoB* (98 SNPs), *ycf2* (81 SNPs), *ycf1* (51), *ndhD* (51), *ndhF* (46) and *ndhB* (46). Four of these genes (*ycf1*, *ycf2*, *ndhB*, *ndhD*) were among most variable plastid genes of the leafy liverwort genus *Calypogeia* [5] and *ycf1* and *ycf2* were the most variable genes of simple thalloid *Aneura pinguis* complex [18]. Both *ycf* genes are often considered as promising barcodes in many taxa of vascular plants [31–34]. The phylogenetic position of Asian specimens reflects their divergence from European and North American specimens (Figure 4), but it does not impact a general tree layout as it is congruent with previously published one [24].

The comparative data for genus or species levels are very limited, since most sequenced genera consist of genome sequence of single species [4,10,29,30]. The number of SNPs between closely related *Calypogeia* species (*C. muelleriana* and *C. integristipula*) detected for the whole genome was one third of the amount detected for CDS for *Nowellia* specimens, and the intraspecific differentiation was limited to few SNPs, however all the samples had European origin [5]. Lower genetic differentiation was also detected at inter- and intraspecific level of complex thalloid liverwort genera *Marchantia* and *Conocephalum* [9], but this lineage is known from low genetic differentiation and slow evolutionary rate of organellar genomes [35]. The level of CDS polymorphism found among remaining Asian specimens is similar to those found among cryptic lineages of *A. pinguis* complex [18,36,37].

The numbers of detected SNPs reflect the genetic identity which amounted to 99.98% among European and North American samples, and 97.49% among Asian and European/North American ones. This value is rather characteristic for interspecific values, as mean genetic identity among ten *Calypogeia* species was 97.50% and 99.81% at intraspecific level [5]. Similar genetic identity were found among complex thalloid *Conocephalum* species with 97.67% at interspecific and 99.98% at intraspecific levels [9]. The high genetic differentiation could be explained by population origin or could suggest a cryptic speciation. The morphological differentiation in easily delimited liverwort taxa is often overlooked, especially if well-established features, like characteristic macromorphology or unique micromorphological characters, are present. With very characteristic morphology, *N. curvifolia* falls within this group of species. Detailed studies based on wide material collection often lead to description of new species [16,38].

Intraspecific differentiation of *N. curvifolia* was not studied using morphological or molecular methods, but genetic distances between European and Asian samples suggest presence of geographical races or cryptic species, which are known in liverworts [17,36,39]. Application of integrative taxonomy approach enabled description of new species within genera like *Conocephalum* [15], *Calypogeia* [16] and *Marsupella* [40]. However in some cryptic species morphological characters are too blurry despite strong molecular, physiological and environmental differentiation, but this concerns mainly simple thalloids [37,41,42].



Figure 4. Phylogenetics relationships of 44 bryophyte species based on protein-coding sequences obtained using ML analysis. Bootstrap values lower than 100 are given at the nodes. Bayesian inference resulted in a tree with congruent topology and PP values lower than 1 are given below branches.

3.4. RNA Editing in Organellar Genomes

RNA editing alters the identity of nucleotides in an RNA sequence so that the mature transcript differs from the template defined in the genome. This process has been observed in chloroplasts and mitochondria of both seed and early land plants, including liverworts. In plant organellar genomes two types of RNA edition are known: typical C to U and reverse U to C [43].

The RNA editing in liverwort plastomes is poorly explored, especially with direct use of RNA-seq data. In plastome of *Nowellia curvifolia* 17 RNA editing sites were confirmed by RNA sequencing (Table S3). Single nucleotide edition was confirmed for dehydrogenases (*ndhB*, *ndhC*, *ndhF*, *ndhG*, *ndhI*), genes of photosystem I and II (*psaI*, *psbH*, *psbZ*) and other like: *rpoB*, *petB*, *ycf4*, *ycf66*. Two edited nucleotides were found in genes *petD* and *atpI*, and one edition in the latter is obligatory to create a start codon. Among 16 typical C-U editing events, that are common in plant plastomes and mitogenomes, the reverse edition

U-C was found in the plastid *chlL* gene. The reverse U-to-C RNA editing appears to be restricted to hornworts, some lycophytes, and ferns [44], but has not been confirmed in liverwort plastomes up to the date. The robust reverse editing was predicted for plastome of *Gymnomitrium concinatum* [10], but in silico prediction tools seem to be incorrect in the case of U to C ending in the early land plants [2].

The RNA editing within mitochondrial transcripts was more frequent with 127 edited sites along 23 genes, but all of them were canonical C-U events (Supplementary Table S3). Among most edited were genes *ccmC* (15), *cox1* (10), *atp6*, *ccmB* and *ccmFN* (9). The disproportion between editing events in plastome and mitogenome is bigger than an average for liverworts, where usually RNA edition is three times more frequent in mitogenome than plastome, but in few species from genera *Bazzania*, *Lepidozia* and *Odonthoschizma* edition in plastid transcript is more frequent than in mitochondrial transcript [45]. Overall RNA editing frequency of *Nowellia curvifolia* organellar genes is lower than the average for Jungermanniales (210).

4. Conclusions

Recently published papers significantly expand our knowledge of liverworts organellar genomes, but their infra-specific variation remained almost unexplored. The newly assembled plastomes of *Nowellia curvifolia* revealed the smallest size among species with a complete set of genes and the shortest IRs among all liverworts. However, the size reduction was not equally distributed along the genome, but mostly focused in the region between *psbA* and *psbD* genes. The comparative analysis of chloroplast genes enables identification of significant amounts of SNPs between American, European and Asian specimens suggesting advanced cryptic speciation in this morphologically defined species. However, further studies are required to better understand this process in *Nowellia*, including wider sampling and morphological studies with special focus on Asian populations. Detailed analysis of RNA-editing revealed one example of non-canonical, reverse editing in chloroplast *chlL* gene, which was not reported in liverworts to date. The previous studies reported the possibility of reverse editing, but RNA-seq datasets didn't confirm U to C edition in plastid genomes of liverworts, which is quite common in other non-seed plants lineages.

Supplementary Materials: The following are available online at <https://www.mdpi.com/1424-2818/13/2/81/s1>, Figure S1: The comparison of *Nowellia* plastome with close relatives and two liverworts with smaller genomes with reduced gene sets (*Aneura mirabilis* and *Cololejeunea lanciloba*), Table S1: Specimens details, Table S2: Number of SNPs detected in chloroplast CDS, Table S3: Number of edited sites in plastid and mitochondrial transcripts.

Author Contributions: Conceptualization: J.S., M.S., writing: J.S., K.K., M.Ś., M.S., laboratory analyses: M.Ś., M.S., resources: J.S., M.S., data validation: K.K., J.S. All authors have read and agreed to the published version of the manuscript.

Funding: The sequencing of liverwort organellar genomes was financially supported by The National Science Center Kraków, Poland: Grant No. 2015/19/B/NZ8/03970.

Institutional Review Board Statement: Not applicable.

Informed Consent Statement: Not applicable.

Data Availability Statement: The newly sequenced organellar genomes sequenced are submitted to GenBank database.

Conflicts of Interest: The authors declare no conflict of interest.

References

1. Liu, Y.; Medina, R.; Goffinet, B. 350 My of Mitochondrial Genome Stasis in Mosses, an Early Land Plant Lineage. *Mol. Biol. Evol.* **2014**, *31*, 2586–2591. [CrossRef]
2. Myszczyński, K.; Ślipiko, M.; Sawicki, J. Potential of Transcript Editing Across Mitogenomes of Early Land Plants Shows Novel and Familiar Trends. *Int. J. Mol. Sci.* **2019**, *20*, 2963. [CrossRef]

3. Dong, S.; Zhao, C.; Zhang, S.; Zhang, L.; Wu, H.; Liu, H.; Zhu, R.; Jia, Y.; Goffinet, B.; Liu, Y. Mitochondrial genomes of the early land plant lineage liverworts (Marchantiophyta): Conserved genome structure, and ongoing low frequency recombination. *BMC Genom.* **2019**, *20*, 1–14. [[CrossRef](#)]
4. Yu, Y.; Liu, H.; Yang, J.; Ma, W.; Pressel, S.; Wu, Y.; Schneider, H. Exploring the plastid genome disparity of liverworts. *J. Syst. Evol.* **2019**, *57*, 382–394. [[CrossRef](#)]
5. Ślipiko, M.; Myszczyński, K.; Buczkowska, K.; Bączkiewicz, A.; Szczecińska, M.; Sawicki, J. Molecular delimitation of European leafy liverworts of the genus *Calypogeia* based on plastid super-barcodes. *BMC Plant Biol.* **2020**, *20*, 243. [[CrossRef](#)]
6. Ohyama, K.; Fukuzawa, H.; Kohchi, T.; Sano, T.; Sano, S.; Shirai, H.; Umesono, K.; Shiki, Y.; Takeuchi, M.; Aota, Z.C.S.-I.; et al. Structure and organization of *Marchantia polymorpha* chloroplast genome. *J. Mol. Biol.* **1988**, *203*, 281–298. [[CrossRef](#)]
7. Oda, K.; Yamato, K.; Ohta, E.; Nakamura, Y.; Takemura, M.; Nozato, N.; Akashi, K.; Kanegae, T.; Ogura, Y.; Kohchi, T.; et al. Gene organization deduced from the complete sequence of liverwort *Marchantia polymorpha* mitochondrial DNA. *J. Mol. Biol.* **1992**, *223*, 1–7. [[CrossRef](#)] [[PubMed](#)]
8. Wickett, N.J.; Zhang, Y.; Hansen, S.K.; Roper, J.M.; Kuehl, J.V.; Plock, S.A.; Wolf, P.G.; Depamphilis, C.W.; Boore, J.L.; Goffinet, B. Functional Gene Losses Occur with Minimal Size Reduction in the Plastid Genome of the Parasitic Liverwort *Aneura mirabilis*. *Mol. Biol. Evol.* **2008**, *25*, 393–401. [[CrossRef](#)]
9. Sawicki, J.; Bączkiewicz, A.; Buczkowska, K.; Górski, P.; Krawczyk, K.; Mizia, P.; Myszczyński, K.; Ślipiko, M.; Szczecińska, M. The Increase of Simple Sequence Repeats during Diversification of Marchantiidae, An Early Land Plant Lineage, Leads to the First Known Expansion of Inverted Repeats in the Evolutionarily-Stable Structure of Liverwort Plastomes. *Genes* **2020**, *11*, 299. [[CrossRef](#)] [[PubMed](#)]
10. Myszczyński, K.; Górski, P.; Ślipiko, M.; Sawicki, J. Sequencing of organellar genomes of *Gymnomitrium concinnatum* (Jungermanniales) revealed the first exception in the structure and gene order of evolutionary stable liverworts mitogenomes. *BMC Plant Biol.* **2018**, *18*, 321. [[CrossRef](#)] [[PubMed](#)]
11. Ślipiko, M.; Myszczyński, K.; Buczkowska-Chmielewska, K.; Bączkiewicz, A.; Szczecińska, M.; Sawicki, J. Comparative Analysis of Four *Calypogeia* Species Revealed Unexpected Change in Evolutionarily-Stable Liverwort Mitogenomes. *Genes* **2017**, *8*, 395. [[CrossRef](#)]
12. Liu, Y.; Xue, J.-Y.; Wang, B.; Li, L.; Qiu, Y.-L. The Mitochondrial Genomes of the Early Land Plants *Treubia lacunosa* and *Anomodon rugelii*: Dynamic and Conservative Evolution. *PLoS ONE* **2011**, *6*, e25836. [[CrossRef](#)]
13. Feldberg, K.; Váňa, J.; Krusche, J.; Kretschmann, J.; Patzak, S.D.F.; Pérez-Escobar, O.A.; Rudolf, N.R.; Seefelder, N.; Schäfer-Verwimp, A.; Long, D.G.; et al. A phylogeny of *Cephaloziaceae* (Jungermanniopsida) based on nuclear and chloroplast DNA markers. *Org. Divers. Evol.* **2016**, *16*, 727–742. [[CrossRef](#)]
14. Lincoln, M. *Liverworts of New England; Memoirs of the New York Botanical Garden*; Botanical Garden Press: New York, NY, USA, 2008; Volume 99.
15. Szweykowski, J.; Buczkowska, K.; Odrzykoski, I.J. *Conocephalum salebrosum* (Marchantiopsida, Conocephalaceae)—A new Holarctic liverwort species. *Plant Syst. Evol.* **2005**, *253*, 133–158. [[CrossRef](#)]
16. Buczkowska, K.; Bakalin, V.; Bączkiewicz, A.; Agüero, B.; Gonera, P.; Ślipiko, M.; Szczecińska, M.; Sawicki, J. Does *Calypogeia azurea* (Calypogeiaceae, Marchantiophyta) occur outside Europe? Molecular and morphological evidence. *PLoS ONE* **2018**, *13*, e0204561. [[CrossRef](#)]
17. Heinrichs, J.; Hentschel, J.; Bombosch, A.; Fiebig, A.; Reise, J.; Edelmann, M.; Kreier, H.-P.; Schäfer-Verwimp, A.; Caspari, S.; Schmidt, A.R.; et al. One species or at least eight? Delimitation and distribution of *Frullania tamarisci* (L.) Dumort. s. l. (Jungermanniopsida, Porellales) inferred from nuclear and chloroplast DNA markers. *Mol. Phylogenetics Evol.* **2010**, *56*, 1105–1114. [[CrossRef](#)]
18. Myszczyński, K.; Bączkiewicz, A.; Buczkowska, K.; Ślipiko, M.; Szczecińska, M.; Sawicki, J. The extraordinary variation of the organellar genomes of the *Aneura pinguis* revealed advanced cryptic speciation of the early land plants. *Sci. Rep.* **2017**, *7*, 9804. [[CrossRef](#)]
19. Bolger, A.M.; Lohse, M.; Usadel, B. Trimmomatic: A flexible trimmer for Illumina sequence data. *Bioinformatics* **2014**, *30*, 2114–2120. [[CrossRef](#)] [[PubMed](#)]
20. Dierckxsens, N.; Mardulyn, P.; Smits, G. NOVOPlasty: de novo assembly of organelle genomes from whole genome data. *Nucleic Acids Res.* **2017**, *45*, e18. [[CrossRef](#)]
21. Tillich, M.; Lehwark, P.; Pellizzer, T.; Ulbricht-Jones, E.S.; Fischer, A.; Bock, R.; Greiner, S. GeSeq—Vand accurate annotation of organelle genomes. *Nucleic Acids Res.* **2017**, *45*, W6–W11. [[CrossRef](#)] [[PubMed](#)]
22. Greiner, S.; Lehwark, P.; Bock, R. OrganellarGenomeDRAW (OGDRAW) version 1.3.1: Expanded toolkit for the graphical visualization of organellar genomes. *Nucleic Acids Res.* **2019**, *47*, W59–W64. [[CrossRef](#)] [[PubMed](#)]
23. Amiryousefi, A.; Hyvönen, J.; Poczai, P. IRscope: An online program to visualize the junction sites of chloroplast genomes. *Bioinformatics* **2018**, *34*, 3030–3031. [[CrossRef](#)] [[PubMed](#)]
24. Yu, Y.; Yang, J.; Ma, W.; Pressel, S.; Liu, H.; Wu, Y.; Schneider, H. Chloroplast phylogenomics of liverworts: A reappraisal of the backbone phylogeny of liverworts with emphasis on Ptilidiales. *Cladistics* **2020**, *36*, 184–193. [[CrossRef](#)]
25. Stamatakis, A. RAxML version 8: A tool for phylogenetic analysis and post-analysis of large phylogenies. *Bioinformatics* **2014**, *30*, 1312–1313. [[CrossRef](#)]

26. Ronquist, F.; Teslenko, M.; Van Der Mark, P.; Ayres, D.L.; Darling, A.; Höhna, S.; Larget, B.; Liu, L.; Suchard, M.A.; Huelsenbeck, J.P. MrBayes 3.2: Efficient Bayesian Phylogenetic Inference and Model Choice Across a Large Model Space. *Syst. Biol.* **2012**, *61*, 539–542. [[CrossRef](#)]
27. Kearse, M.; Moir, R.; Wilson, A.; Stones-Havas, S.; Cheung, M.; Sturrock, S.; Buxton, S.; Cooper, A.; Markowitz, S.; Duran, C.; et al. Geneious Basic: An integrated and extendable desktop software platform for the organization and analysis of sequence data. *Bioinformatics* **2012**, *28*, 1647–1649. [[CrossRef](#)] [[PubMed](#)]
28. Lenz, H.; Knoop, V. PREPACT 2.0: Predicting C-to-U and U-to-C RNA Editing in Organelle Genome Sequences with Multiple References and Curated RNA Editing Annotation. *Bioinform. Biol. Insights* **2013**, *7*. [[CrossRef](#)]
29. Forrest, L.L.; Wickett, N.J.; Cox, C.J.; Goffinet, B. Deep sequencing of *Ptilidium* (Ptilidiaceae) suggests evolutionary stasis in liverwort plastid genome structure. *Plant Ecol. Evol.* **2011**, *144*, 29–43. [[CrossRef](#)]
30. Grosche, C.; Funk, H.T.; Maier, U.G.; Zauner, S. The Chloroplast Genome of *Pellia endiviifolia*: Gene Content, RNA-Editing Pattern, and the Origin of Chloroplast Editing. *Genome Biol. Evol.* **2012**, *4*, 1349–1357. [[CrossRef](#)]
31. Dong, W.; Liu, J.; Yu, J.; Wang, L.; Zhou, S. Highly Variable Chloroplast Markers for Evaluating Plant Phylogeny at Low Taxonomic Levels and for DNA Barcoding. *PLoS ONE* **2012**, *7*, e35071. [[CrossRef](#)]
32. Dong, W.; Xu, C.; Li, C.; Sun, J.; Zuo, Y.; Shi, S.; Cheng, T.; Guo, J.; Zhou, S. *ycf1*, the most promising plastid DNA barcode of land plants. *Sci. Rep.* **2015**, *5*, 8348. [[CrossRef](#)]
33. Szczecińska, M.; Sawicki, J. Genomic Resources of Three *Pulsatilla* Species Reveal Evolutionary Hotspots, Species-Specific Sites and Variable Plastid Structure in the Family Ranunculaceae. *Int. J. Mol. Sci.* **2015**, *16*, 22258–22279. [[CrossRef](#)]
34. Zhang, W.; Zhao, Y.; Yang, G.; Peng, J.; Chen, S.; Xu, Z. Determination of the evolutionary pressure on *Camellia oleifera* Hainan Island using the complete chloroplast genome sequence. *PeerJ* **2019**, *7*, e7210. [[CrossRef](#)] [[PubMed](#)]
35. Villarreal, A.J.C.; Crandall-Stotler, B.J.; Hart, M.L.; Long, D.G.; Forrest, L.L. Divergence times and the evolution of morphological complexity in an early land plant lineage (*Marchantiopsida*) with a slow molecular rate. *New Phytol.* **2015**, *209*, 1734–1746. [[CrossRef](#)] [[PubMed](#)]
36. Bączkiewicz, A.; Sawicki, J.; Buczkowska, K.; Polok, K.; Zieliński, R. Application of Different DNA Markers in Studies on Cryptic Species of *Aneura pinguis* (Jungermanniopsida, Metzgeriales). *Cryptogam. Bryol.* **2008**, *29*, 3–21.
37. Bączkiewicz, A.; Szczecińska, M.; Sawicki, J.; Stebel, A.; Buczkowska, K. DNA barcoding, ecology and geography of the cryptic species of *Aneura pinguis* and their relationships with *Aneura maxima* and *Aneura mirabilis* (Metzgeriales, Marchantiophyta). *PLoS ONE* **2017**, *12*, e0188837. [[CrossRef](#)] [[PubMed](#)]
38. Bakalin, V.; Vilnet, A.; Klimova, K.; Nguyen, V.S. *Calypogeia vietnamica* sp. nov. (Calypogeiaceae, Hepaticae) from North Vietnam and Diversification in Calypogeia Taxa with Blue Oil Bodies. *Herzogia* **2019**, *32*, 219–229. [[CrossRef](#)]
39. Feldberg, K.; Groth, H.; Wilson, R.; Heinrichs, J. Cryptic speciation in *Herbertus* (Herbertaceae, Jungermanniopsida): Range and morphology of *Herbertus sendtneri* inferred from nrITS sequences. *Plant Syst. Evol.* **2004**, *249*, 247–261. [[CrossRef](#)]
40. Bakalin, V.A.; Fedosov, V.E.; Fedorova, A.V.; Nguyen, V.S. Integrative Taxonomic Revision of *Marsupella* (Gymnomitriaceae, Hepaticae) Reveals Neglected Diversity in Pacific Asia. *Cryptogam. Bryol.* **2019**, *40*, 59. [[CrossRef](#)]
41. Fiedorow, P.; Odrzykoski, I.; Szweykowski, J.; Szweykowska-Kulińska, Z. Phylogeny of the European species of the genus *Pellia* (Hepaticae; Metzgeriales) based on the molecular data from nuclear tRNA Leu CAA intergenic sequences. *Gene* **2001**, *262*, 309–315. [[CrossRef](#)]
42. Diatta, J.; Bączkiewicz, A.; Drapikowska, M.; Rodkiewicz, P.; Sawicki, J.; Szczecińska, M.; Buczkowska, K. Geochemical Al-kalinity and Acidity as Preferential Site-Specific for Three Liverwort Lineages of *Aneura pinguis* Cryptic Species A. *Sci. Rep.* **2021**, in press.
43. Knoop, V. When you can't trust the DNA: RNA editing changes transcript sequences. *Cell. Mol. Life Sci.* **2010**, *68*, 567–586. [[CrossRef](#)] [[PubMed](#)]
44. Knie, N.; Grewe, F.; Fischer, S.; Knoop, V. Reverse U-to-C editing exceeds C-to-U RNA editing in some ferns—A monilophyte-wide comparison of chloroplast and mitochondrial RNA editing suggests independent evolution of the two processes in both organelles. *BMC Evol. Biol.* **2016**, *16*, 1–12. [[CrossRef](#)]
45. Dong, S.; Zhao, C.; Zhang, S.; Wu, H.; Mu, W.; Wei, T.; Li, N.; Wan, T.; Liu, H.; Cui, J.; et al. The Amount of RNA Editing Sites in Liverwort Organellar Genes Is Correlated with GC Content and Nuclear PPR Protein Diversity. *Genome Biol. Evol.* **2019**, *11*, 3233–3239. [[CrossRef](#)] [[PubMed](#)]