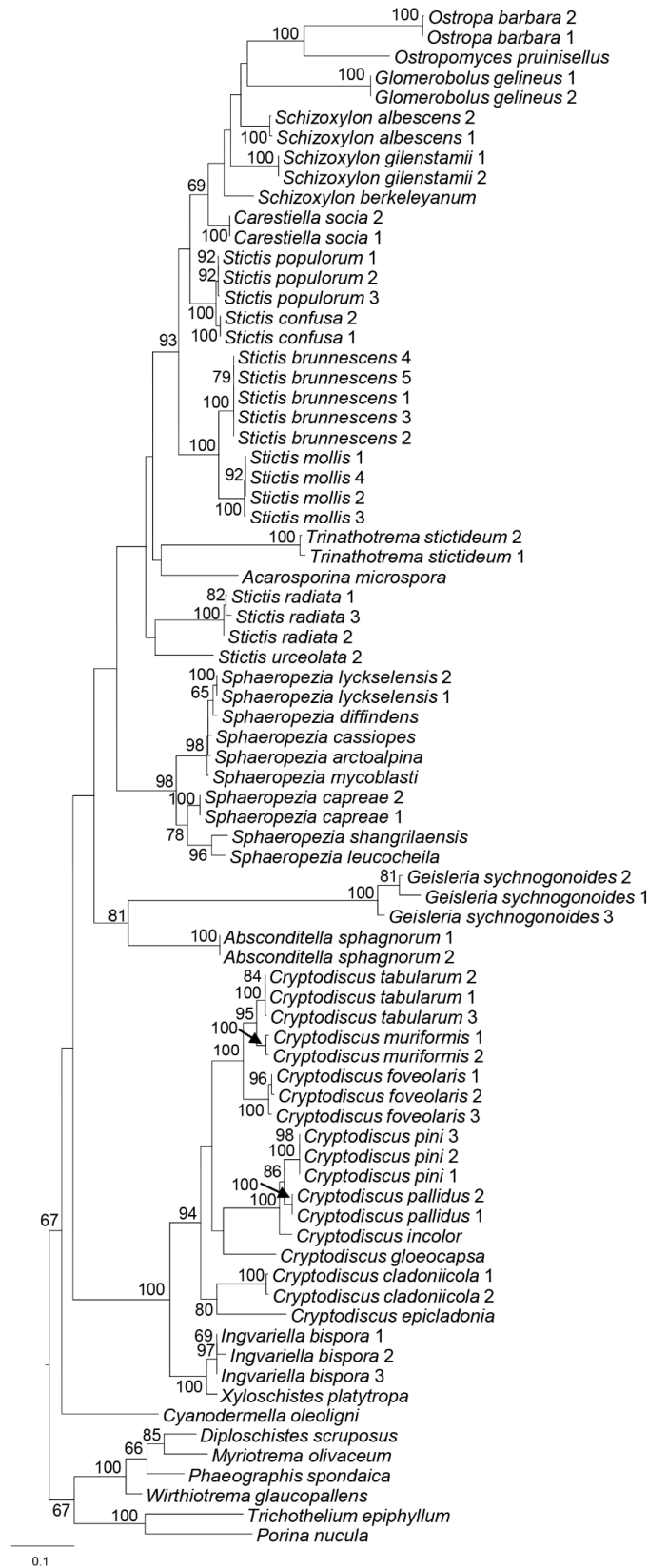


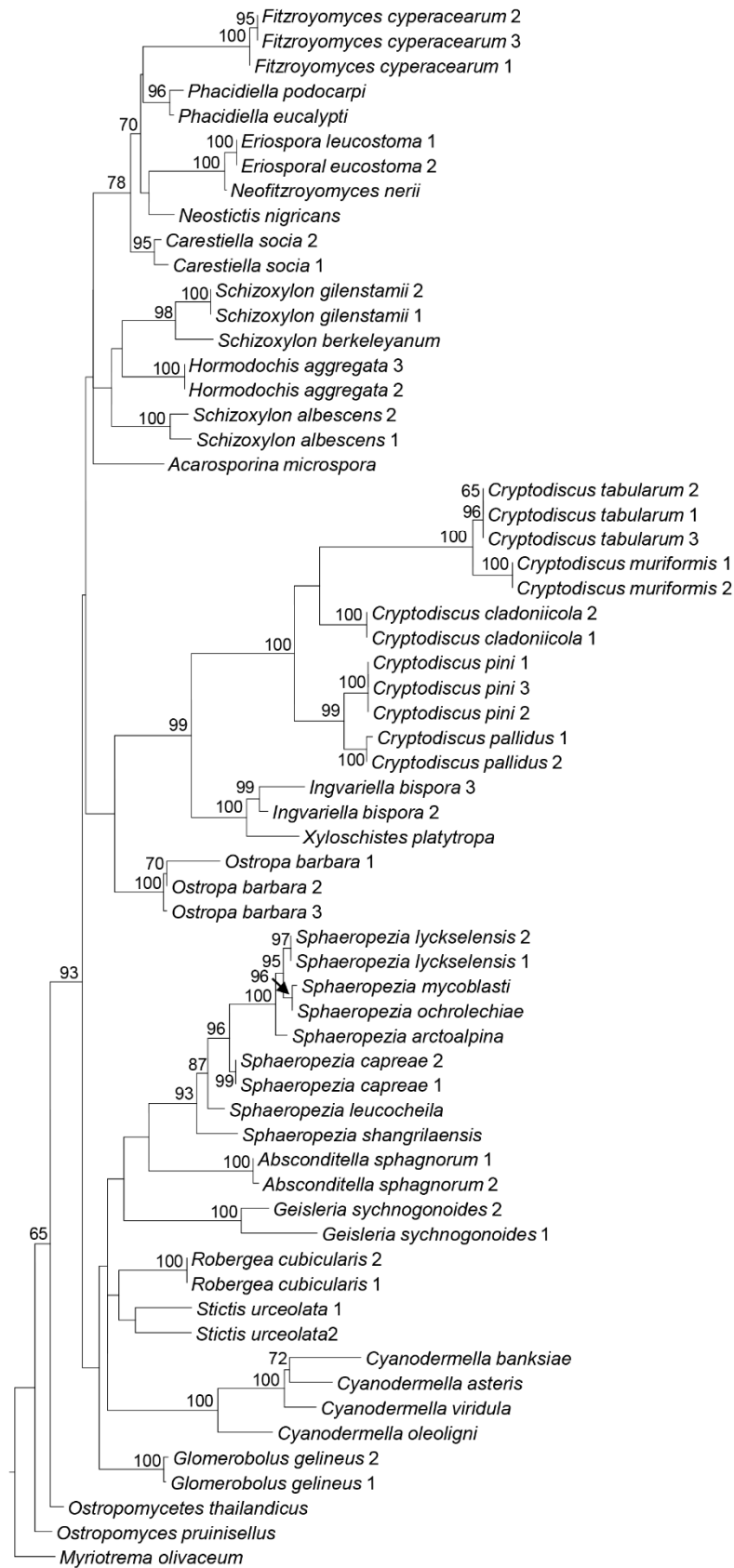
**Supplementary Materials:**

**Figure S1.** Best-scoring RAxML tree reconstructed based on analysis of a single dataset of mtSSU sequence data. Bootstrap support values for ML equal to or greater than 65% is defined above the nodes.



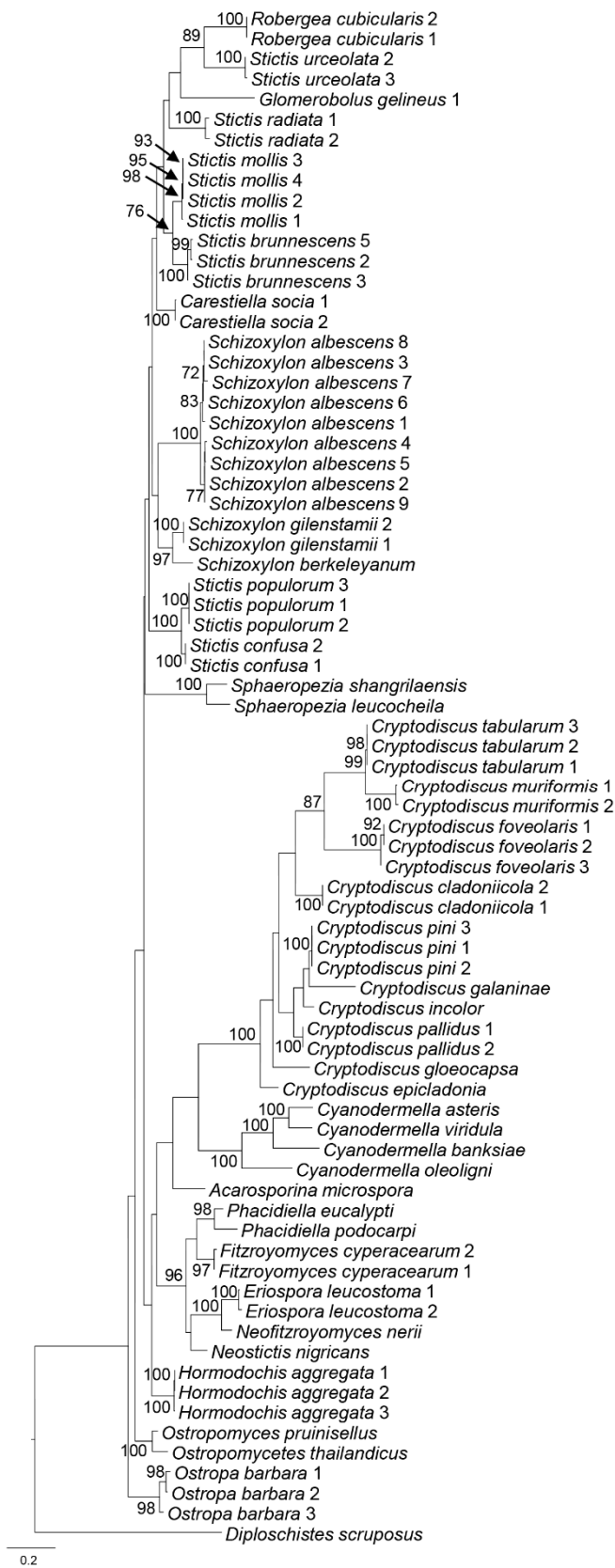
0.1

**Figure S2** Best-scoring RAxML tree reconstructed based on analysis of a single dataset of LSU sequence data. Bootstrap support values for ML equal to or greater than 65% is defined above the nodes.



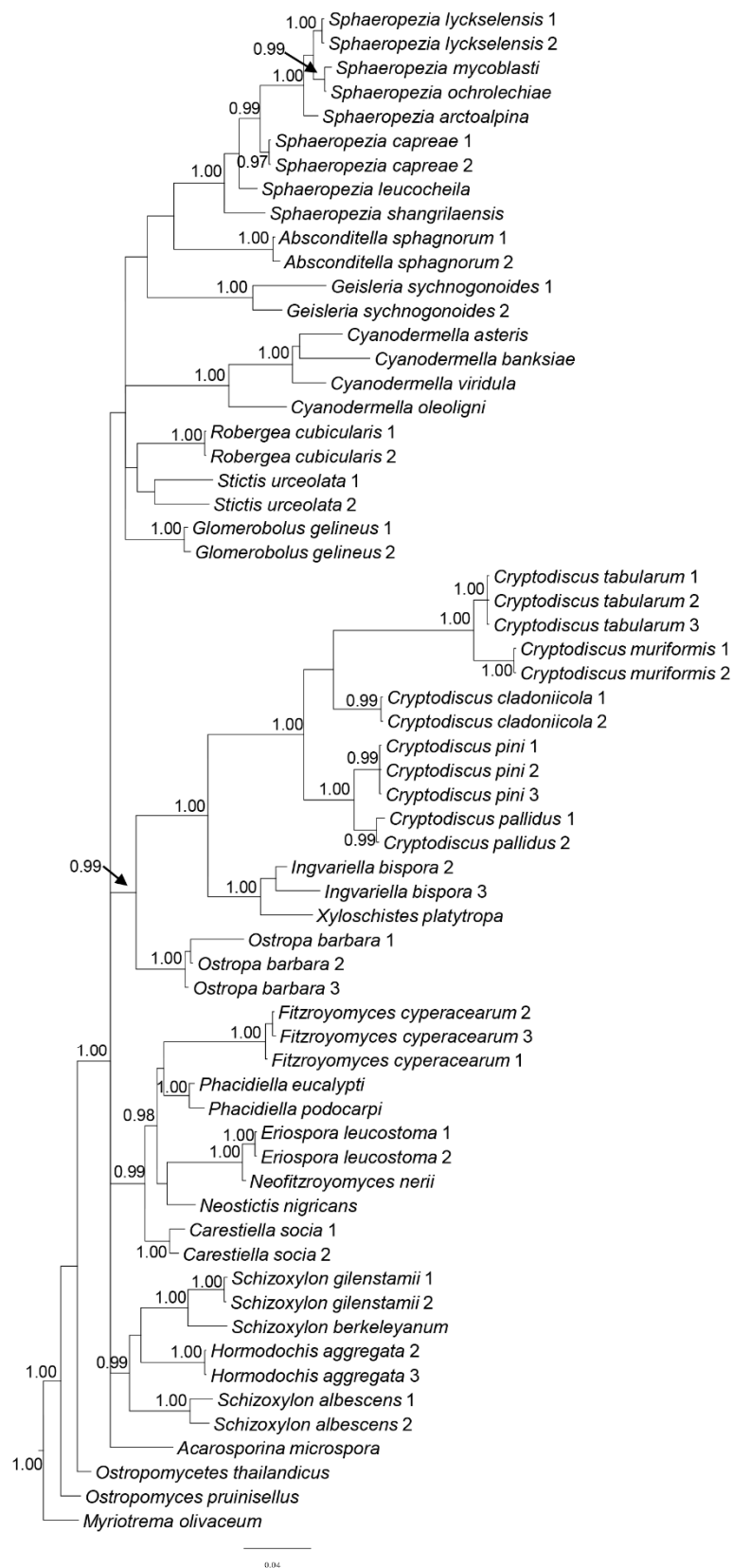
0.03

**Figure S3** Best-scoring RAxML tree reconstructed based on analysis of a single dataset of ITS sequence data. Bootstrap support values for ML equal to or greater than 65% is defined above the nodes.

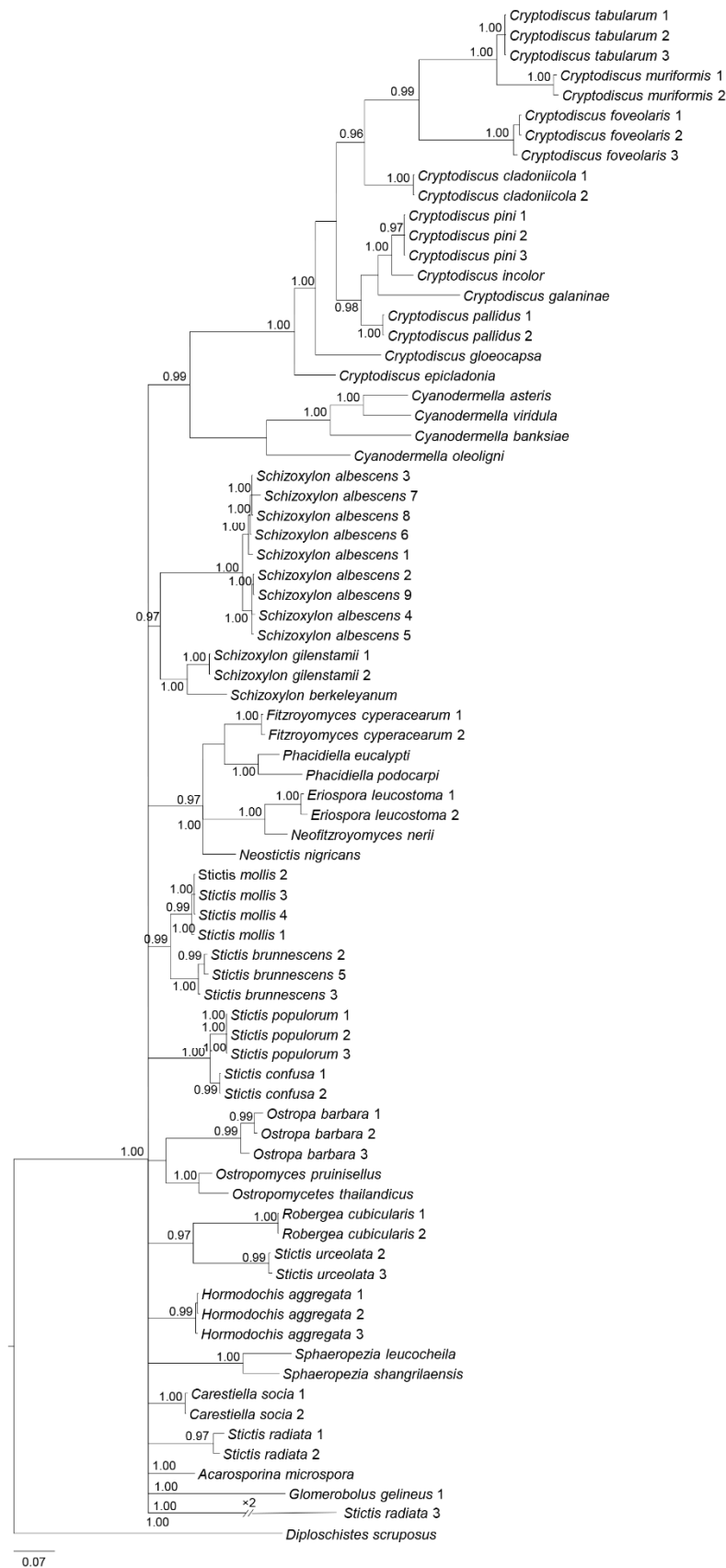




**Figure S5** Best-scoring RAxML tree reconstructed based on analysis of a single dataset of LSU sequence data. Bootstrap support values for BP equal to or greater than 0.90 is defined above the nodes.



**Figure S6** Best-scoring RAxML tree reconstructed based on analysis of a single dataset of ITS sequence data. Bootstrap support values for BP equal to or greater than 0.90 is defined above the nodes.



0.07