

Article

# Qualitative Analysis and Componential Differences of Chemical Constituents in Taxilli Herba from Different Hosts by UFLC-Triple TOF-MS/MS

Jiahuan Yuan <sup>1</sup>, Li Li <sup>2</sup>, Zhichen Cai <sup>1</sup>, Nan Wu <sup>1</sup>, Cuihua Chen <sup>1</sup>, Shengxin Yin <sup>1</sup>, Shengjin Liu <sup>1,\*</sup>, Wenxin Wang <sup>1</sup>, Yuqi Mei <sup>1</sup>, Lifang Wei <sup>1</sup>, Xunhong Liu <sup>1,\*</sup>, Lisi Zou <sup>1</sup> and Haijie Chen <sup>1</sup>

- <sup>1</sup> College of Pharmacy, Nanjing University of Chinese Medicine, Nanjing 210023, China; 20200655@njucm.edu.cn (J.Y.); caizhichen2008@126.com (Z.C.); wunan7272@163.com (N.W.); cuihuachen2013@163.com (C.C.); yinshengxin723@163.com (S.Y.); wangwenxin66666666@163.com (W.W.); 18260028173@163.com (Y.M.); weilifangquiet@163.com (L.W.); zlstcm@126.com (L.Z.); chenhaijie039X@163.com (H.C.)
- <sup>2</sup> College of Pharmacy, Guangxi University of Chinese Medicine, Nanning 530220, China; 000682@gxtcmu.edu.cn
- \* Correspondence: lsj@njucm.edu.cn (S.L.); 300100@njucm.edu.cn (X.L.); Tel./Fax: +86-25-8581-1524 (S.L. & X.L.)

**Citation:** Yuan, J.; Li, L.; Cai, Z.; Wu, N.; Chen, C.; Yin, S.; Liu, S.; Wang, W.; Mei, Y.; Wei, L.; et al. Qualitative Analysis and Componential Differences of Chemical Constituents in Taxilli Herba from Different Hosts by UFLC-Triple TOF-MS/MS. *Molecules* **2021**, *26*, 6373. <https://doi.org/10.3390/molecules26216373>

Academic Editors: Francesco Cacciola, Yi Wang and Xingxian Zhang

Received: 30 August 2021  
Accepted: 19 October 2021  
Published: 21 October 2021

**Publisher's Note:** MDPI stays neutral with regard to jurisdictional claims in published maps and institutional affiliations.



**Copyright:** © 2021 by the authors. Licensee MDPI, Basel, Switzerland. This article is an open access article distributed under the terms and conditions of the Creative Commons Attribution (CC BY) license (<http://creativecommons.org/licenses/by/4.0/>).

**Abstract:** Taxilli Herba (TH) is a well-known traditional Chinese medicine (TCM) with a wide range of clinical application. However, there is a lack of comprehensive research on its chemical composition in recent years. At the same time, *Taxillus chinensis* (DC) Danser is a semi parasitic plant with abundant hosts, and its chemical constituents varies due to hosts. In this study, the characterization of chemical constituents in TH was analyzed by ultra-fast liquid chromatography coupled with triple quadrupole-time of flight tandem mass spectrometry (UFLC-Triple TOF-MS/MS). Moreover, partial least squares discriminant analysis (PLS-DA) was applied to reveal the differential constituents in TH from different hosts based on the qualitative information of the chemical constituents. Results showed that 73 constituents in TH were identified or tentatively presumed, including flavonoids, phenolic acids and glycosides, and others; meanwhile, the fragmentation pathways of different types of compounds were preliminarily deduced by the fragmentation behavior of the major constituents. In addition, 23 differential characteristic constituents were screened based on variable importance in projection (VIP) and *p*-value. Among them, quercetin 3-*O*- $\beta$ -D-glucuronide, quercitrin and hyperoside were common differential constituents. Our research will contribute to comprehensive evaluation and intrinsic quality control of TH, and provide a scientific basis for the variety identification of medicinal materials from different hosts.

**Keywords:** Taxilli Herba; hosts; chemical constituents; UFLC-Triple TOF-MS/MS

## 1. Introduction

The traditional Chinese medicine Taxilli Herba (TH) is the dried stems and branches with leaves of *Taxillus chinensis* (DC.) Danser. It is a famous genuine medicinal material of Guangxi Province in China, with the properties of dispelling rheumatism, nourishing liver and kidney, strengthening muscles and bones, and miscarriage prevention. TH is frequently prescribed for rheumatic arthralgia, waist and knee weakness, muscle weakness, metrorrhagia, bleeding during pregnancy, fetal movement, dizziness, and other symptoms [1]. Modern pharmacological studies showed that TH has significant effects on anti-inflammatory and analgesic, anti-tumor, lowering blood pressure, lowering blood sugar, and protecting nerves and so on [2]. Chemical composition is the

material basis of clinical efficacy. Phytochemical analysis has revealed that TH contains multiple chemical constituents such as flavonoids [3–7], phenolic acids [5], volatiles [8–11], terpenoid derivatives [12], and other chemical constituents based on previous literature. However, the chemical constituents of TH is still lack of in-depth analysis. Flavonoids were recommended as the inspection indicators in the quality evaluation reports, mainly focusing on the quantitative determination of quercetin, quercitrin and avicularin. Therefore, it is of great significance to clarify the main chemical constituents of TH for better control the quality of medicinal materials.

Since *Taxillus chinensis* (DC.) Danser is a semi-parasitic plant, the complex diversity of host plants constitutes an important biological feature of TH. According to the results of the resource survey, there are currently more than 150 kinds of hosts for TH. Nevertheless, it is difficult to distinguish TH from different hosts based on their appearance. Simultaneously, the host plants affect the quality of TH through the special relationship between the hosts and TH in terms of chemical constituents and pharmacological effects [13]. Hence, distinguishing the differences in the chemical constituents of TH from different hosts is also extremely necessary and important.

In recent years, Liquid chromatography-mass spectrometry (LC-MS) technique has become the most widely used analytical method for direct identification of multiple constituents in traditional Chinese medicine (TCM), because it combines the high separation performance of chromatography with the high discrimination ability of mass spectrometry. Among them, ultra-fast liquid chromatography coupled with triple quadrupole-time of flight tandem mass spectrometry (UFLC-Triple TOF-MS/MS) has complementary advantages, with strong separation ability, high detection sensitivity and strong specificity, etc [14]. Partial least squares discriminant analysis (PLS-DA) is a supervised statistical method of discriminant analysis, which can be used to establish a model of the relationship between the expression of metabolites and the sample category to realize the prediction of the sample category. At present, PLS-DA is widely used in the quality control of traditional Chinese medicines, such as the authentication identification of medicinal materials, the identification of base sources, and the rapid identification of medicinal materials of different origins [15–18]. Thus, in this study, qualitative analysis of TH from *Morus alba* L. was carried out based on UFLC-Triple TOF-MS/MS. A total of 73 constituents were identified by UFLC-Triple TOF-MS/MS and the fragmentation pathways of different types of compounds was summarized according to the fragmentation behavior of the major constituents. PLS-DA was applied to discriminate TH samples from seven common hosts based on the above qualitative results. 23 differential characteristic constituents were identified according to variable importance in projection (VIP) and *p*-value. Among them, quercetin 3-O- $\beta$ -D-glucuronide, quercitrin and hyperoside were the common differential constituents. Our study could be conducive to the standard formulation and comprehensive quality control of TH and could also provide a scientific basis for the identification of TH from different hosts.

## 2. Results

### 2.1. Optimization of Extraction Conditions

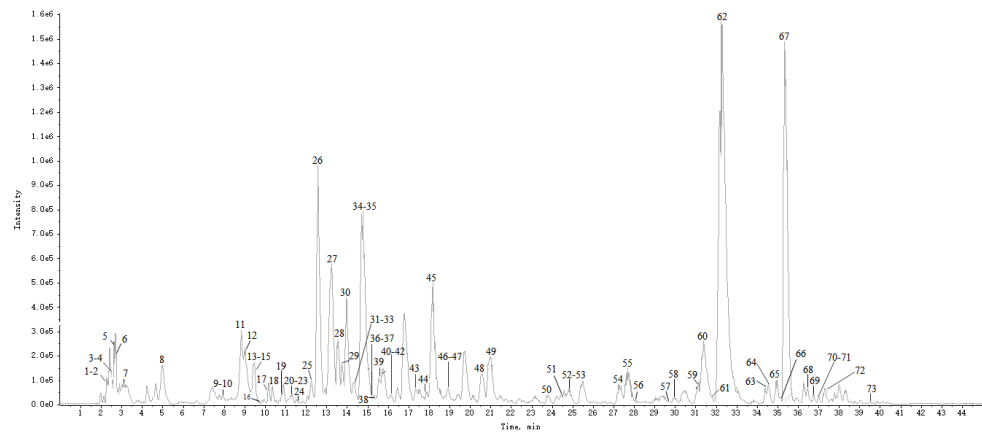
In order to optimize the extraction conditions, several factors were examined with different concentrations of extraction solvent (30%, 40%, 50%, 60%, 70%, 80% and 100% methanol); solid-liquid ratio (1:10, 1:20, 1:30, 1:40 and 1:50, *w/v*); and extraction time (15, 30, 45, 60, 75 and 90 min), which might have different effects on extraction efficiency. The results showed that the chromatogram had the most peaks and the extraction efficiency was relatively high with the conditions of a 1:30 ratio in 50% methanol for 30 min at room temperature.

## 2.2. Optimization of UFLC-Triple TOF-MS/MS Conditions

The effects of methanol-water, acetonitrile-water, methanol–0.4% (*v/v*) formic acid water solution, methanol: acetonitrile (1:1)–0.4% (*v/v*) formic acid water solution as the mobile phase, flow rates (0.8 and 1.0 mL/min), and column temperatures (25, 30, 35 °C) on the resolution of each peak in the samples were compared to achieve higher separation. The results showed that each peak could achieve a good separation effect when we chose methanol: acetonitrile (1:1)–0.4% (*v/v*) formic acid water solution as the mobile phase.

## 2.3. Identification of the Constituents in TH

The base peak chromatogram (BPC) of TH sample (S1–4, 4 batches of Taxilli Herba samples from *Morus alba* L. were numbered S1-1, S1-2, S1-3, S1-4.) in the negative ion mode was shown in Figure 1. Finally, 73 constituents were identified, including 33 flavonoids, 7 phenolic acids, 4 phenylpropanoids, 5 tannins, 13 glycosides, and 11 other constituents. Among them, 15 compounds were identified by comparison with the retention time and characteristic fragment ions of the standards, and the rest were speculated based on databases and related literature. The detailed information of the identified compounds was shown in Table 1, with their corresponding structures in Figure 2.



**Figure 1.** The base peak chromatogram (BPC) of Taxilli Herba from *Morus alba* L. in negative ion mode.

**Table 1.** Identification of 73 constituents in Taxilli Herba from *Morus alba* L. by UFLC-Triple TOF-MS/MS.

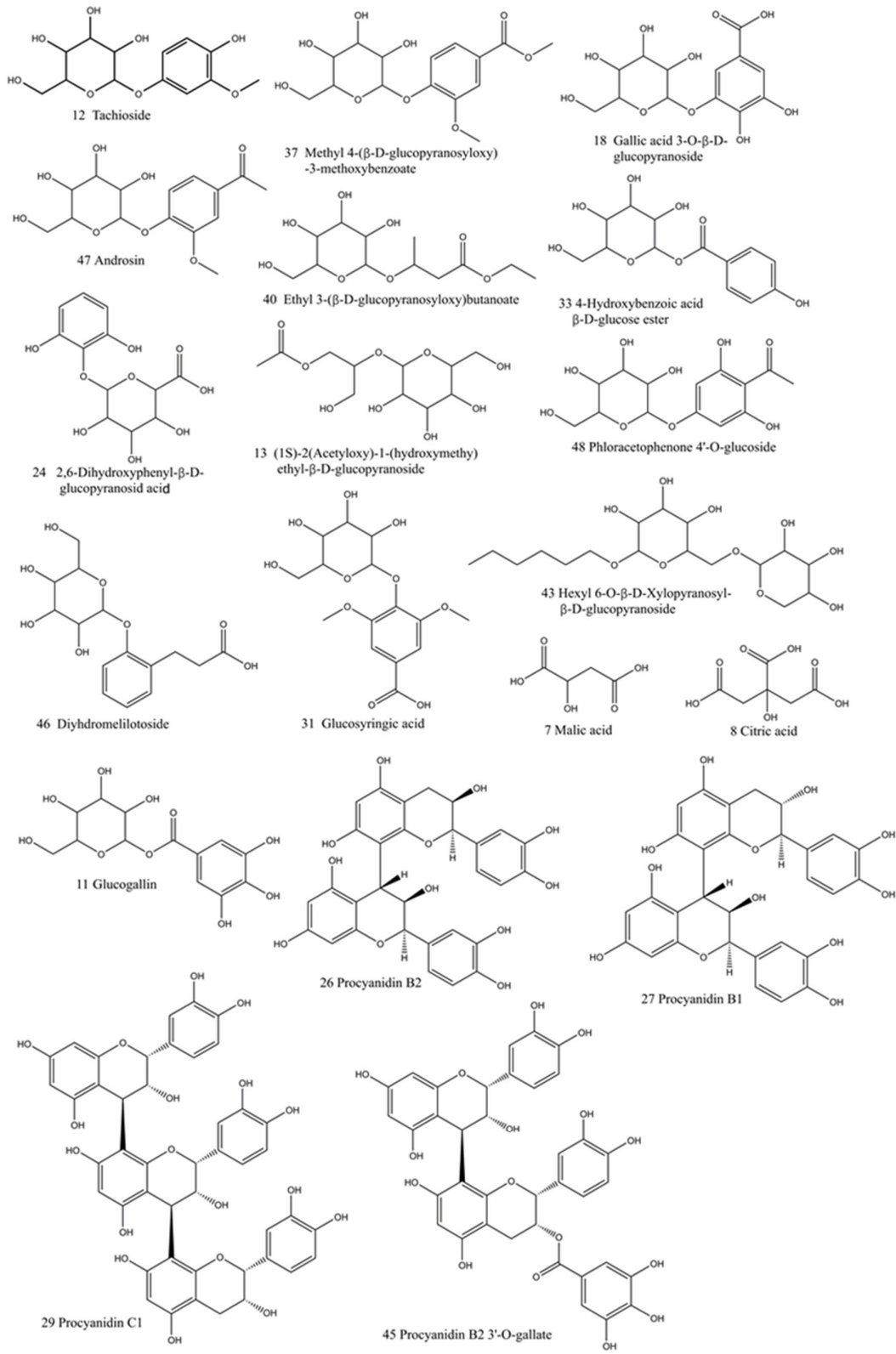
No.	tr /min	Molecular Formula	MS <sup>1</sup> (m/z)	MS <sup>2</sup> (m/z)	Error /ppm	Compound	References
1	2.24	C <sub>6</sub> H <sub>12</sub> O <sub>6</sub>	179.0561[M-H] <sup>-</sup>	161.0457[M-H-H <sub>2</sub> O] <sup>-</sup> , 117.0207, 89.0248, 71.0158	0.05	Glucose	[19]
2	2.27	C <sub>5</sub> H <sub>10</sub> N <sub>2</sub> O <sub>3</sub>	145.0633[M-H] <sup>-</sup>	128.0539[M-H-NH <sub>3</sub> ] <sup>-</sup> , 127.0514[M-H-H <sub>2</sub> O] <sup>-</sup> , 101.0725[M-H-CO <sub>2</sub> ] <sup>-</sup> , 99.0560[M-H-HCOOH] <sup>-</sup>	0.70	Glutamine	[20]
3	2.54	C <sub>11</sub> H <sub>20</sub> O <sub>10</sub>	311.0991[M-H] <sup>-</sup>	233.0654[M-H-C <sub>2</sub> H <sub>3</sub> O <sub>2</sub> -CHOH] <sup>-</sup> , 173.0446[M-H-C <sub>2</sub> H <sub>3</sub> O <sub>2</sub> -CHOH-C <sub>2</sub> H <sub>4</sub> O <sub>2</sub> ] <sup>-</sup> , 131.0341[M-H-C <sub>6</sub> H <sub>11</sub> O <sub>6</sub> ] <sup>-</sup> , 99.0095[M-H-Xyl-C <sub>3</sub> H <sub>6</sub> O <sub>2</sub> ] <sup>-</sup> , 71.0155[M-H-Xyl-C <sub>4</sub> H <sub>8</sub> O <sub>3</sub> ] <sup>-</sup>	1.93	Primeverose	[21]
4*	2.59	C <sub>10</sub> H <sub>13</sub> N <sub>5</sub> O <sub>5</sub>	282.0830[M-H] <sup>-</sup>	150.0426[M-H-Rib] <sup>-</sup> , 133.0153[M-H-Rib-H <sub>2</sub> O] <sup>-</sup>	4.90	Guanosine	[22]
5	2.63	C <sub>7</sub> H <sub>12</sub> O <sub>6</sub>	191.0057[M-H] <sup>-</sup>	173.0454[M-H-H <sub>2</sub> O] <sup>-</sup> , 127.0397[M-H-H <sub>2</sub> O-HCOOH] <sup>-</sup> , 59.0160, 71.0161, 85.0304	0.05	Quinic acid	[23]
6	2.86	C <sub>7</sub> H <sub>10</sub> O <sub>5</sub>	173.0472[M-H] <sup>-</sup>	155.0407[M-H <sub>2</sub> O] <sup>-</sup> , 137.0246[M-H-2H <sub>2</sub> O] <sup>-</sup> , 129.0189[M-H-CO <sub>2</sub> ] <sup>-</sup> , 111.0451[M-H-CO <sub>2</sub> -H <sub>2</sub> O] <sup>-</sup>	1.10	Shikimic acid	[24]
7	3.12	C <sub>4</sub> H <sub>6</sub> O <sub>5</sub>	133.0146[M-H] <sup>-</sup>	115.0041[M-H-H <sub>2</sub> O] <sup>-</sup> , 71.0160[M-H-H <sub>2</sub> O-CO <sub>2</sub> ] <sup>-</sup>	2.60	Malic acid	[25]
8	4.96	C <sub>6</sub> H <sub>8</sub> O <sub>7</sub>	191.0206[M-H] <sup>-</sup>	173.0101[M-H-H <sub>2</sub> O] <sup>-</sup> , 154.9982[M-H-2H <sub>2</sub> O] <sup>-</sup> , 129.0187[M-H-H <sub>2</sub> O-CO <sub>2</sub> ] <sup>-</sup> , 103.0400[M-H-2CO <sub>2</sub> ] <sup>-</sup>	0.00	Citric acid	[26]
9*	7.93	C <sub>7</sub> H <sub>6</sub> O <sub>5</sub>	169.0138[M-H] <sup>-</sup>	125.0240[M-H-CO <sub>2</sub> ] <sup>-</sup> , 107.0141[M-H-CO <sub>2</sub> -H <sub>2</sub> O] <sup>-</sup> , 97.0341[M-H-CO <sub>2</sub> -CO] <sup>-</sup> , 69.0374[M-H-CO <sub>2</sub> -2CO] <sup>-</sup>	2.60	Gallic acid	[27,28]
10	8.00	C <sub>19</sub> H <sub>16</sub> O <sub>4</sub>	307.1029[M-H] <sup>-</sup>	145.0508, 127.0397	2.60	Bisdemethoxycurcumin	[29]
11	8.86	C <sub>13</sub> H <sub>16</sub> O <sub>10</sub>	331.0673[M-H] <sup>-</sup>	179.0137[M-H-G] <sup>-</sup> , 169.0253, 161.024[M-H-G-H <sub>2</sub> O] <sup>-</sup>	1.80	Glucogallin	[28]
12	9.03	C <sub>13</sub> H <sub>18</sub> O <sub>8</sub>	301.0928[M-H] <sup>-</sup>	139.0324[M-H-Glc] <sup>-</sup> , 123.0089[M-H-Glc-O] <sup>-</sup>	1.66	Tachioside	[26]
13	9.34	C <sub>11</sub> H <sub>20</sub> O <sub>9</sub>	295.1045[M-H] <sup>-</sup>	131.0934[M-H-Glc] <sup>-</sup> , 113.0252[M-H-Glc-H <sub>2</sub> O] <sup>-</sup> , 85.0306, 71.016, 59.0162	0.30	(1S)-2(Acetyloxy)-1-(hydroxymethyl)ethyl-β-D-	[30]
14	9.39	C <sub>20</sub> H <sub>20</sub> O <sub>11</sub>	435.1129[M-H] <sup>-</sup>	271.0448[M-H-Glc] <sup>-</sup> , 313.0354, 151.0037, 125.0245	2.52	Homomangiferin	[31]
15	9.43	C <sub>24</sub> H <sub>20</sub> O <sub>8</sub>	435.1124[M-H] <sup>-</sup>	313.0509, 151.0025, 123.0085	0.23	Isochinomin	[32]
16	9.55	C <sub>26</sub> H <sub>22</sub> O <sub>10</sub>	493.1183[M-H] <sup>-</sup>	331.0654[M-H-Gal] <sup>-</sup>	1.42	Fluorescein-β-D-galactopyranoside	[29]
17	10.16	C <sub>23</sub> H <sub>18</sub> O <sub>7</sub>	405.1031[M-H] <sup>-</sup>	169.0134, 71.0154	4.93	Toddacoumaquinone	[32]
18	10.31	C <sub>13</sub> H <sub>16</sub> O <sub>10</sub>	331.1061[M-H] <sup>-</sup>	169.0134[M-H-Glc] <sup>-</sup> , 125.0240[M-H-Glc-CO <sub>2</sub> ] <sup>-</sup>	0.60	Gallic acid 3-O-β-D-glucopyranoside	[33–35]
19	10.77	C <sub>22</sub> H <sub>16</sub> O <sub>6</sub>	375.0927[M-H] <sup>-</sup>	285.0437[M-H-Benzyl group] <sup>-</sup> , 151.0030 <sup>[1,3A]</sup>	1.06	7-O-Benzyl Luteolin	[27]
20	11.12	C <sub>24</sub> H <sub>20</sub> O <sub>7</sub>	419.1177[M-H] <sup>-</sup>	271.0421, 151.0033	3.50	Artonol B	[36]
21	11.13	C <sub>25</sub> H <sub>20</sub> O <sub>9</sub>	463.0869[M-H] <sup>-</sup>	435.0761[M-H-CO] <sup>-</sup> , 273.0364[M-H-C <sub>10</sub> H <sub>11</sub> O <sub>3</sub> ] <sup>-</sup> , 151.0927 <sup>[1,3A]</sup>	0.00	Hydrocarpin	[37,38]
22	11.30	C <sub>26</sub> H <sub>30</sub> O <sub>14</sub>	565.1547[M-H] <sup>-</sup>	403.0473[M-H-Glc] <sup>-</sup> , 241.0241[M-H-2Glc] <sup>-</sup>	2.80	Mulberroside F	[39]
23*	11.38	C <sub>7</sub> H <sub>6</sub> O <sub>4</sub>	153.0194[M-H] <sup>-</sup>	109.0303[M-H-CO <sub>2</sub> ] <sup>-</sup> , 101.0314[M-H-CO <sub>2</sub> -CO] <sup>-</sup>	6.90	Protocatechuic acid	[27]

24	11.68	C <sub>12</sub> H <sub>14</sub> O <sub>9</sub>	301.0565[M-H] <sup>-</sup>	283.0456[M-H-H <sub>2</sub> O] <sup>-</sup> , 125.0241[M-H-Glc UA] <sup>-</sup> , 107.0144[M-H-Glc UA-H <sub>2</sub> O] <sup>-</sup>	0.00	2,6-Dihydroxyphenyl-β-D-glucopyranosiduronic acid	[40]
25	12.24	C <sub>9</sub> H <sub>8</sub> O <sub>3</sub>	163.0401[M-H] <sup>-</sup>	119.0482[M-H-CO <sub>2</sub> ] <sup>-</sup> , 93.0316[M-H-CO <sub>2</sub> -C <sub>2</sub> H <sub>2</sub> ] <sup>-</sup>	0.18	p-Coumaric acid	[23]
26	12.57	C <sub>30</sub> H <sub>26</sub> O <sub>12</sub>	577.1354[M-H] <sup>-</sup>	451.0989[M-H-H <sub>2</sub> O-C <sub>6</sub> H <sub>5</sub> O <sub>2</sub> ] <sup>-</sup> , 425.0835[M-H-C <sub>8</sub> H <sub>8</sub> O <sub>3</sub> ] <sup>-</sup> , 407.0733[M-H-C <sub>8</sub> H <sub>8</sub> O <sub>3</sub> -H <sub>2</sub> O] <sup>-</sup> , 289.0685[M-H-TOP] <sup>-</sup> , 245.0768[M-H-TOP-CO <sub>2</sub> ] <sup>-</sup> , 179.0733[M-H-TOP-C <sub>6</sub> H <sub>5</sub> O <sub>2</sub> ] <sup>-</sup> , 125.0231[ <sup>1,4</sup> A] <sup>-</sup>	0.40	Procyanidin B2	[41–43]
27	13.22	C <sub>30</sub> H <sub>26</sub> O <sub>12</sub>	577.1354[M-H] <sup>-</sup>	451.0986[M-H-H <sub>2</sub> O-C <sub>6</sub> H <sub>5</sub> O <sub>2</sub> ] <sup>-</sup> , 425.0829[M-H-C <sub>8</sub> H <sub>8</sub> O <sub>3</sub> ] <sup>-</sup> , 407.0745[M-H-C <sub>8</sub> H <sub>8</sub> O <sub>3</sub> -H <sub>2</sub> O] <sup>-</sup> , 289.0698[M-H-TOP] <sup>-</sup> , 245.0743[M-H-TOP-CO <sub>2</sub> ] <sup>-</sup> , 179.0721[M-H-TOP-C <sub>6</sub> H <sub>5</sub> O <sub>2</sub> ] <sup>-</sup> , 125.0228[ <sup>1,4</sup> A] <sup>-</sup>	0.30	Procyanidin B1	[41–43]
28	13.54	C <sub>45</sub> H <sub>38</sub> O <sub>18</sub>	865.1952[M-H] <sup>-</sup>	739.1671[M-H-C <sub>6</sub> H <sub>5</sub> O <sub>2</sub> -H <sub>2</sub> O] <sup>-</sup> , 713.1887[M-C <sub>8</sub> H <sub>8</sub> O <sub>3</sub> ] <sup>-</sup> , 577.1301[M-H-TOP] <sup>-</sup> , 407.0782[M-H-TOP-C <sub>8</sub> H <sub>8</sub> O <sub>3</sub> -H <sub>2</sub> O] <sup>-</sup> , 289.0712[M-H-2TOP] <sup>-</sup> , 245.0800[M-H-2TOP-CO <sub>2</sub> ] <sup>-</sup> , 125.0236[ <sup>1,4</sup> A] <sup>-</sup>	3.80	Procyanidin C1	[41–43]
29	13.73	C <sub>21</sub> H <sub>32</sub> O <sub>10</sub>	443.1904[M-H] <sup>-</sup>	425.1931[M-H-H <sub>2</sub> O] <sup>-</sup> , 281.1394[M-H-Glc] <sup>-</sup> , 263.1289[M-H-Glc-H <sub>2</sub> O] <sup>-</sup>	1.13	Cynaroside A	[44]
30*	13.96	C <sub>16</sub> H <sub>14</sub> O <sub>5</sub>	285.0620[M-H] <sup>-</sup>	151.0184[ <sup>1,3</sup> A] <sup>-</sup> , 107.0291[ <sup>1,3</sup> A-CO <sub>2</sub> ] <sup>-</sup>	3.16	Isosakuranetin	[45]
31	14.15	C <sub>15</sub> H <sub>20</sub> O <sub>10</sub>	359.0967[M-H] <sup>-</sup>	197.0515[M-H-Glc] <sup>-</sup> , 153.0028[M-H-Glc-CO <sub>2</sub> ] <sup>-</sup> , 127.0245[M-H-Glc-CO <sub>2</sub> -C <sub>2</sub> H <sub>2</sub> ] <sup>-</sup> , 121.0081[M-H-Glc-CO <sub>2</sub> -OCH <sub>3</sub> ] <sup>-</sup>	1.90	Glucosyringic acid	[46]
32	14.32	C <sub>7</sub> H <sub>6</sub> O <sub>3</sub>	137.0224[M-H] <sup>-</sup>	93.0334[M-H-CO <sub>2</sub> ] <sup>-</sup>	0.30	4-Hydroxybenzoic acid	[47]
33	14.34	C <sub>13</sub> H <sub>16</sub> O <sub>8</sub>	299.0776[M-H] <sup>-</sup>	137.0241[M-H-Glc] <sup>-</sup> , 93.0351[M-H-Glc-CO <sub>2</sub> ] <sup>-</sup>	1.2	4-Hydroxybenzoic acid β-D-glucose ester	[48]
34*	14.74	C <sub>15</sub> H <sub>14</sub> O <sub>6</sub>	289.0724[M-H] <sup>-</sup>	245.0235[M-H-CO <sub>2</sub> ] <sup>-</sup> , 179.0341[M-H-B ring] <sup>-</sup> , 167.0339[ <sup>1,2</sup> A] <sup>-</sup> , 163.0385[M-H-H <sub>2</sub> O-B ring] <sup>-</sup> , 149.0234[ <sup>1,3</sup> B] <sup>-</sup> , 137.0237[ <sup>1,3</sup> A] <sup>-</sup> , 125.0235[ <sup>1,4</sup> A] <sup>-</sup> , 109.0289[B ring] <sup>-</sup>	0.82	(+)-catechin	[34,36]
35	14.75	C <sub>15</sub> H <sub>14</sub> O <sub>6</sub>	289.0722[M-H] <sup>-</sup>	245.0300[M-H-CO <sub>2</sub> ] <sup>-</sup> , 179.0339[M-H-B ring] <sup>-</sup> , 167.0340[ <sup>1,2</sup> A] <sup>-</sup> , 163.0379[M-H-H <sub>2</sub> O-B ring] <sup>-</sup> , 149.0246[ <sup>1,3</sup> B] <sup>-</sup> , 137.0237[ <sup>1,3</sup> A] <sup>-</sup> , 125.0229[ <sup>1,4</sup> A] <sup>-</sup> , 109.0199[B ring] <sup>-</sup>	0.56	Epicatechin	[36]
36	14.76	C <sub>9</sub> H <sub>8</sub> O <sub>4</sub>	179.0389[M-H] <sup>-</sup>	135.0472[M-H-CO <sub>2</sub> ] <sup>-</sup> , 109.0440[M-H-CO <sub>2</sub> -CO] <sup>-</sup> , 89.0413[M-H-CO <sub>2</sub> -CO-H <sub>2</sub> O] <sup>-</sup>	3.46	Caffeic acid	[49]
37	14.91	C <sub>15</sub> H <sub>20</sub> O <sub>9</sub>	343.1029[M-H] <sup>-</sup>	181.0490[M-H-Glc] <sup>-</sup> , 135.0427[M-H-Glc-CH <sub>4</sub> O <sub>2</sub> ] <sup>-</sup> , 121.0286[M-H-Glc-COOCH] <sup>-</sup>	2.04	Methyl4-(β-D-glucopyranosyloxy)-3-methoxybenzoate	[48]
38*	15.27	C <sub>16</sub> H <sub>18</sub> O <sub>9</sub>	353.0875[M-H] <sup>-</sup>	191.0554[M-H-caffeoyl] <sup>-</sup> , 179.0365[M-H-C <sub>7</sub> H <sub>10</sub> O <sub>5</sub> ] <sup>-</sup>	0.90	Chlorogenic acid	[23]
39	15.43	C <sub>15</sub> H <sub>14</sub> O <sub>7</sub>	305.0667[M-H] <sup>-</sup>	179.03325[M-H-B ring] <sup>-</sup> , 125.0245[ <sup>1,4</sup> A] <sup>-</sup>	0.10	Epigallocatechin	[48]
40	16.13	C <sub>12</sub> H <sub>22</sub> O <sub>8</sub>	293.1245[M-H] <sup>-</sup>	131.0710[M-H-Glc] <sup>-</sup>	0.70	Ethyl3-(β-D-glucopyranosyloxy)butanoate	[26]
41	16.23	C <sub>15</sub> H <sub>12</sub> O <sub>7</sub>	303.0540[M-H] <sup>-</sup>	151.0051[ <sup>1,3</sup> A] <sup>-</sup> , 152.0502[ <sup>1,3</sup> B] <sup>-</sup> , 175.0386[M-H-H <sub>2</sub> O-B ring] <sup>-</sup>	2.50	Taxifolin	[50,51]
42	16.28	C <sub>21</sub> H <sub>20</sub> O <sub>10</sub>	431.1181[M-H] <sup>-</sup>	269.0453[M-H-Glc] <sup>-</sup> , 225.0671[M-H-Glc-CO] <sup>-</sup> , 151.0033[ <sup>1,3</sup> A] <sup>-</sup> , 107.01[ <sup>1,3</sup> A-CO <sub>2</sub> ] <sup>-</sup>	1.47	Cosmosiin	[52]
43	17.59	C <sub>17</sub> H <sub>32</sub> O <sub>10</sub>	395.1919[M-H] <sup>-</sup>	263.0437[M-H-Xyl] <sup>-</sup> , 101.0242[M-H-Xyl-Glc] <sup>-</sup>	0.71	Hexyl 6-O-β-D-Xylopyranosyl-β-D-glucopyranoside	[53]

44	17.89	C <sub>16</sub> H <sub>20</sub> O <sub>10</sub>	373.1128[M-H] <sup>-</sup>	193.0511[M-H-Glc] <sup>-</sup> , 149.0617[M-H-Glc-CO <sub>2</sub> ] <sup>-</sup> , 123.0743[M-H-Glc-CO <sub>2</sub> -C <sub>2</sub> H <sub>2</sub> ] <sup>-</sup> , 97.0547[M-H-Glc-CO <sub>2</sub> -2C <sub>2</sub> H <sub>2</sub> ] <sup>-</sup>	0.27	Swertiamarin	[40]
45	18.16	C <sub>37</sub> H <sub>30</sub> O <sub>16</sub>	729.1441[M-H] <sup>-</sup>	577.1324[M-H-G] <sup>-</sup> , 441.0743[M-H-TOP] <sup>-</sup>	1.91	Procyanidin B2 3'-O-gallate	[41–43]
46	18.71	C <sub>15</sub> H <sub>20</sub> O <sub>8</sub>	327.1085[M-H] <sup>-</sup>	165.0551[M-H-Glc] <sup>-</sup> , 147.0446[M-H-Glc-H <sub>2</sub> O] <sup>-</sup> , 119.0498[M-H-Glc-H <sub>2</sub> O-COOH] <sup>-</sup>	0.92	Diyhdromelilotoside	[54]
47	18.97	C <sub>15</sub> H <sub>20</sub> O <sub>8</sub>	327.1088[M-H] <sup>-</sup>	165.0554[M-H-Glc] <sup>-</sup> , 147.0447[M-H-Glc-H <sub>2</sub> O] <sup>-</sup>	0.9	Androsin	[55]
48	20.57	C <sub>14</sub> H <sub>18</sub> O <sub>9</sub>	329.0877[M-H] <sup>-</sup>	167.0338[M-H-Glc] <sup>-</sup> , 123.0444[M-H-Glc-CO <sub>2</sub> ] <sup>-</sup>	2.33	Phloracetophenone 4'-O- glucoside	[28]
49	20.96	C <sub>27</sub> H <sub>30</sub> O <sub>14</sub>	577.1329[M-H] <sup>-</sup>	431.0985[M-H-Rha] <sup>-</sup> , 285.0244[M-H-2Rha] <sup>-</sup> , 256.0179[M-H-2Rha-CO] <sup>-</sup>	4.33	Kaempferitrin	[56]
50	23.64	C <sub>15</sub> H <sub>10</sub> O <sub>7</sub>	301.1189[M-H] <sup>-</sup>	283.1076[M-H-H <sub>2</sub> O] <sup>-</sup> 271.1089[M-H-CO <sub>2</sub> ] <sup>-</sup> , 161.0470[M-H-B ring-H <sub>2</sub> O] <sup>-</sup>	0.00	Tricetin	[28]
51	24.42	C <sub>22</sub> H <sub>20</sub> O <sub>12</sub>	477.1014[M-H] <sup>-</sup>	315.0562[M-H-Glc] <sup>-</sup> , 300.0131[M-H-Glc-CH <sub>3</sub> ] <sup>-</sup> , 151.0026 <sup>[1,3A]</sup>	1.78	Brassicin	[55]
52	24.81	C <sub>5</sub> H <sub>10</sub> O <sub>5</sub>	269.0647[M-H] <sup>-</sup>	241.0466[M-H-CO] <sup>-</sup> , 226.0396[M-H-C <sub>2</sub> H <sub>2</sub> O] <sup>-</sup> , 197.0431[M-H-CO-CO <sub>2</sub> ] <sup>-</sup>	0.706	Galangin	[57]
53	24.84	C <sub>5</sub> H <sub>10</sub> O <sub>5</sub>	269.0650[M-H] <sup>-</sup>	241.0507[M-H-CO] <sup>-</sup> , 225.0538[M-H-CO <sub>2</sub> ] <sup>-</sup> , 197.0582[M-H-CO <sub>2</sub> -CO] <sup>-</sup> , 182.0574[M-H-CO-CO <sub>2</sub> -CH <sub>3</sub> ] <sup>-</sup>	1.67	Emodin	[58]
54	27.32	C <sub>22</sub> H <sub>18</sub> O <sub>10</sub>	441.0817[M-H] <sup>-</sup>	289.0713[M-H-G] <sup>-</sup> , 271.0630[M-H-G-H <sub>2</sub> O] <sup>-</sup> , 179.0362[M-H-G-B ring] <sup>-</sup> , 135.0242 <sup>[1,3A]</sup> , 125.0247,109.0292[B ring] <sup>-</sup>	2.30	(-)-Epicatechin gallate	[59]
55	27.57	C <sub>22</sub> H <sub>24</sub> O <sub>12</sub>	479.1198[M-H] <sup>-</sup>	315.0564[M-H-Glc] <sup>-</sup> , 211.0523 <sup>[0,4B]</sup> , 165.0558 <sup>[1,3B]</sup> , 151.0542 <sup>[1,3A]</sup> , 127.0244[B ring] <sup>-</sup>	0.60	3'-O-methyl-dihydroquercetin -7-O-β-D-glucoside	[60]
56*	28.18	C <sub>28</sub> H <sub>24</sub> O <sub>16</sub>	615.0991[M-H] <sup>-</sup>	463.0868[M-H-G] <sup>-</sup> , 301.3056[M-H-G-Glc/Gal] <sup>-</sup>	0.09	Quercetin-3-O-(6''-galloyl)-β- galactopyranside/Quercetin-3-O-(6''- galloyl)-β-glucopyranside	[61]
57	29.73	C <sub>21</sub> H <sub>20</sub> O <sub>12</sub>	463.0866[M-H] <sup>-</sup>	301.0347[M-H-Rha] <sup>-</sup> , 151.0022 <sup>[1,2A-CO]</sup> , 107.0149 <sup>[1,2A-CO-CO<sub>2</sub>]</sup>	3.40	Myricetrin	[62]
58	29.94	C <sub>18</sub> H <sub>24</sub> O <sub>10</sub>	399.1298[M-H] <sup>-</sup>	329.0508[M-H-C <sub>5</sub> H <sub>10</sub> ] <sup>-</sup> , 169.0150[M-H-C <sub>5</sub> H <sub>10</sub> -Glc] <sup>-</sup> , 151.0072[M-H-C <sub>5</sub> H <sub>10</sub> -Glc-H <sub>2</sub> O] <sup>-</sup> , 125.0236[M-H-C <sub>5</sub> H <sub>10</sub> -Glc-CO <sub>2</sub> ] <sup>-</sup> , 107.0142[M-H-C <sub>5</sub> H <sub>10</sub> -Glc-CO <sub>2</sub> -H <sub>2</sub> O] <sup>-</sup>	0.50	Taxilluside A	[12]
59*	31.17	C <sub>27</sub> H <sub>30</sub> O <sub>16</sub>	609.1453[M-H] <sup>-</sup>	301.0354[M-H-RG] <sup>-</sup> , 151.0028[M-H-RG- <sup>1,3B</sup> ]	1.32	Rutin	[63]
60*	31.30	C <sub>21</sub> H <sub>20</sub> O <sub>12</sub>	463.0864[M-H] <sup>-</sup>	301.0341[M-H-Gal] <sup>-</sup> , 271.0233[M-H-Gal-CHO] <sup>-</sup> , 151.0025 <sup>[1,3A]</sup>	3.40	Hyperoside	[62]
61*	32.06	C <sub>21</sub> H <sub>18</sub> O <sub>13</sub>	477.0655[M-H] <sup>-</sup>	301.6332[M-H-Glc UA] <sup>-</sup> , 283.0230[M-H-Glc UA-H <sub>2</sub> O] <sup>-</sup> , 151.0027 <sup>[1,3A]</sup> , 107.0140 <sup>[0,4A]</sup>	4.12	Quercetin 3-O-β-D-glucuronide	[61]
62*	32.46	C <sub>21</sub> H <sub>20</sub> O <sub>12</sub>	463.0872[M-H] <sup>-</sup>	301.0346[M-H-Glc] <sup>-</sup> 151.0034 <sup>[1,3A]</sup>	2.2	Isoquercitrin	[64]
63*	34.39	C <sub>20</sub> H <sub>18</sub> O <sub>11</sub>	433.0772[M-H] <sup>-</sup>	301.0354[M-H-Ara] <sup>-</sup> , 151.0037 <sup>[1,3A]</sup> , 107.0139 <sup>[0,4A]</sup>	0.12	Avicularin	[65]
64	34.42	C <sub>21</sub> H <sub>20</sub> O <sub>12</sub>	465.1035[M-H] <sup>-</sup>	313.0140 <sup>[1,3B]</sup> , 303.0570[M-H-Glc] <sup>-</sup> , 151.0391 <sup>[1,3A]</sup> , 123.0085 <sup>[1,4A]</sup>	0.774	Taxifolin 3'-O-β-D-glucopyranoside	[54]
65	34.99	C <sub>27</sub> H <sub>30</sub> O <sub>15</sub>	593.1501[M-H] <sup>-</sup>	285.0405[M-H-RG] <sup>-</sup>	1.80	Kaempferol 3-rutinoside	[58]
66	35.11	C <sub>21</sub> H <sub>20</sub> O <sub>11</sub>	447.0935[M-H] <sup>-</sup>	285.0393[M-H-Glc] <sup>-</sup> , 243.0497[M-H-Glc-C <sub>2</sub> H <sub>2</sub> O] <sup>-</sup> , 241.0341[M-H-Glc-CO <sub>2</sub> ] <sup>-</sup> , 151.0029 <sup>[1,3A]</sup>	0.50	Luteolin-7-O-glucoside	[13]
67*	35.38	C <sub>21</sub> H <sub>20</sub> O <sub>11</sub>	447.0921[M-H] <sup>-</sup>	301.0354[M-H-Rha] <sup>-</sup> , 283.0223[M-H-Rha-H <sub>2</sub> O] <sup>-</sup> , 151.0024 <sup>[1,3A]</sup>	2.7	Quercitrin	[55]
68	36.54	C <sub>23</sub> H <sub>24</sub> O <sub>10</sub>	459.1288[M-H] <sup>-</sup>	297.0762[M-H-Glc] <sup>-</sup> , 191.0342[M-H-Glc-B ring] <sup>-</sup>	1.74	8-methylretusin-7β-glucoside	[51]

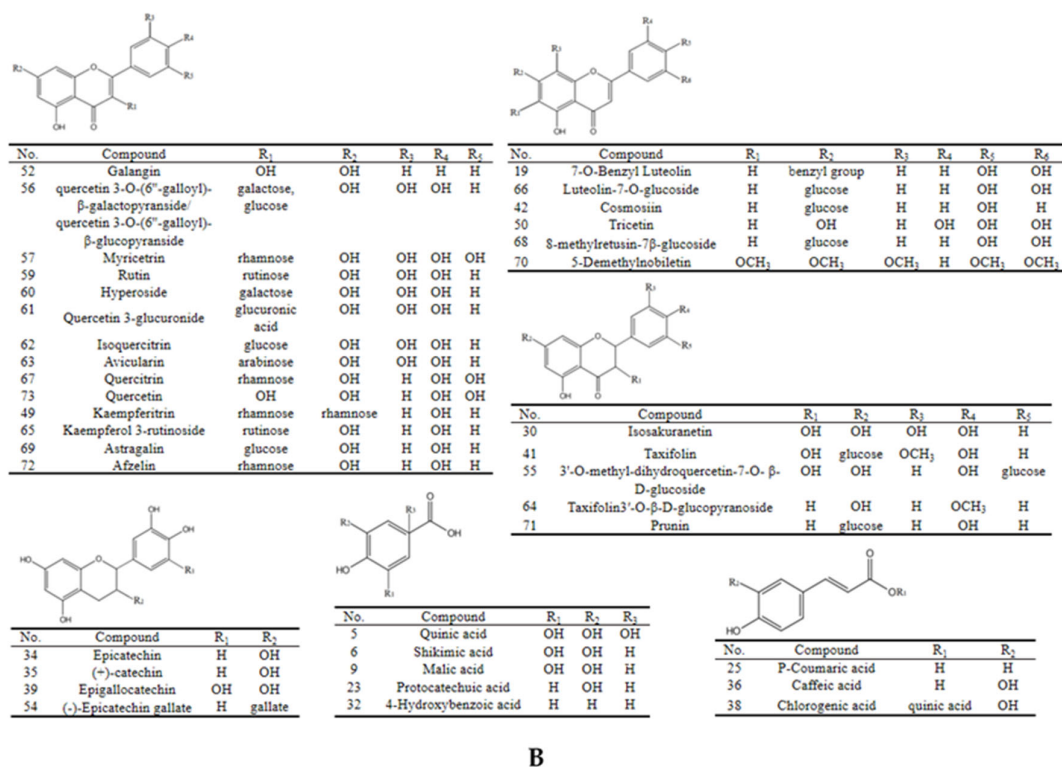
69	36.71	C <sub>21</sub> H <sub>20</sub> O <sub>11</sub>	447.0925[M-H] <sup>-</sup>	285.0389[M-H-Glc] <sup>-</sup> , 151.0022 <sup>[1,3A]</sup>	1.50	Astragalin	[65]
70	37.07	C <sub>20</sub> H <sub>20</sub> O <sub>8</sub>	387.1141[M-H] <sup>-</sup>	341.1081[M-H-CH <sub>3</sub> -OCH <sub>3</sub> ] <sup>-</sup> , 218.8840[M-H-OCH <sub>3</sub> -2OCH <sub>3</sub> -B ring] <sup>-</sup> , 119.0350[M-H-C <sub>12</sub> H <sub>11</sub> O <sub>6</sub> -CH <sub>3</sub> ] <sup>-</sup>	1.30	5-Demethylnobiletin	[66]
71	37.09	C <sub>21</sub> H <sub>22</sub> O <sub>10</sub>	433.1131[M-H] <sup>-</sup>	311.0641 <sup>[1,3A]</sup> , 271.0641[M-H-Glc] <sup>-</sup> , 151.0031 <sup>[1,3A]</sup> , 119.0511 <sup>[1,3B]</sup> , 107.0135[B ring] <sup>-</sup>	0.02	Prunin	[28,55]
72	37.40	C <sub>21</sub> H <sub>20</sub> O <sub>10</sub>	431.0981[M-H] <sup>-</sup>	285.0406[M-H-Rha] <sup>-</sup> , 227.0352[M-H-Rha-2CO] <sup>-</sup>	0.60	Afzelin	[60,61]
73*	39.51	C <sub>15</sub> H <sub>10</sub> O <sub>7</sub>	301.0354[M-H] <sup>-</sup>	273.0376[M-H-CO] <sup>-</sup> , 178.9988 <sup>[1,2A]</sup> , 151.0030 <sup>[1,3A]</sup> , 121.0296 <sup>[1,2B]</sup> , 107.0143 <sup>[0,4A]</sup>	0.73	Quercetin	[61]

Note: (1) \*: comparison with reference standards; (2) Xyl: D-xylose; G: Gallic acid; Rib: D-ribose; Glc: D-glucose; Gal: D-galactose; Rha: L-rhamnose; Ara: L-arabinose; Glc UA: Glucuronic acid; RG: Rutinose.



A





## B

Figure 2. Chemical structures of compounds identified in the Taxilli Herba (A) exact structures, (B) general structures.

### 2.3.1. Identification of Flavonoids

Flavonoids are the main active ingredients of TH. A total of 33 flavonoids were identified in this study, including dihydroflavones, dihydroflavonols, flavonols, isoflavones, flavones, flavanes, and other flavonoids.

In the structure of various flavonoids, the substituents on the A and B rings are mostly hydroxyl, methyl, and methoxy groups, while the C ring is generally connected to monosaccharides or polysaccharides. The basic cleavage methods are loss of neutral fragments and the Retro-Diels-Alder (RDA) cleavage of the C ring. Several RDA cleavage modes of flavonoids were shown in Figure 3.

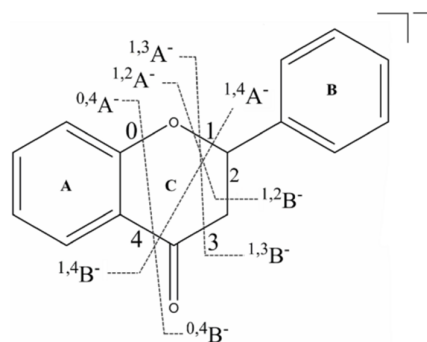


Figure 3. Schematic diagram of the fracture site of flavonoid aglycone in negative ion mode.

Dihydroflavones and dihydroflavonols: compounds 30 and 71 were identified as dihydroflavones, and compounds 41, 55, and 64 were identified as dihydroflavonols. It can be seen from the fragment ions of these compounds that dihydroflavonoids generally do not lose neutral fragments such as CO (28 Da) and CO<sub>2</sub> (44 Da). Dihydroflavonoids are

prone to have RDA reactions, where 1, 3 bonds of C ring are more likely to break to produce [<sup>1,3</sup>A]<sup>-</sup> and [<sup>1,3</sup>B]<sup>-</sup>. Compound **71** (Figure 4A) was substituted by glucose at position 7 in A ring, and it was speculated that there were two possible cleavage pathways inferred based on the MS/MS spectrum. The first pathway was to break the 1,3 bonds of the C ring directly, producing a fragment with a sugar group, the second pathway was to lose glycosides to obtain aglycones, and then break the 1, 3 bonds of C ring. The cracking law of dihydroflavonols is similar to that of dihydroflavones. Although compounds **55** and **64** had the same glucose groups in their structures, the substitution positions were different. Compound **55** lost one molecule of glycoside and then RDA reaction occurred, while the fragment ions generated by compound **64** were different from that of compound **55**. It followed that the position of the substituent had a great influence on the cleavage sequence of the sugar chain and the C ring.

Flavanes: compounds **34**, **35**, **39**, and **54** were flavan-3-ols as well as belonged to catechin compounds. The cleavage process generally occurred in the A, B, and C rings. Taking (+)-catechin as an example, Figure 4B showed an accurate mass of [M-H]<sup>-</sup> ion at *m/z* 289.0724, which corresponded to the molecular formula of this compound as C<sub>15</sub>H<sub>14</sub>O<sub>6</sub>. The compound was identified as (+)-catechin based on the mass spectrometry data in literature and compared with the reference substance. There were numerous breaks between 1 and 2, 3, 4 bonds in the C ring resulting in 167.0339 [<sup>1,2</sup>A]<sup>-</sup>, 137.0234 [<sup>1,3</sup>A]<sup>-</sup>, 125.0235 [<sup>1,4</sup>A]<sup>-</sup>. Successive loss of H<sub>2</sub>O and B ring (C<sub>6</sub>H<sub>6</sub>O<sub>2</sub> 109 Da) generated the fragment ion at *m/z* 163.0385, and the fragment ion at *m/z* 179.0341 was produced by losing the B ring directly without losing water. The ion at *m/z* 245.0235 suggested that the A ring lost a neutral fragment of CO<sub>2</sub>. The others had similar cracking laws.

Flavonoids existed as glycosides or completely in free form in plants. Compounds **19**, **42**, **66**, **50**, and **70** were classified as flavones. In the primary mass spectrum, the flavones all showed the quasi-molecular ion peak [M-H]<sup>-</sup> without other fragment ions. Flavones exhibited some of the same cracking patterns in MS<sup>2</sup>, such as the loss of neutral fragments of CO, CO<sub>2</sub>, H<sub>2</sub>O (18 Da), CH<sub>3</sub> (15 Da), and OCH<sub>3</sub> (31 Da). In the negative ion mode, the C ring broke to produce <sup>1,3</sup>A<sup>-</sup> (151 Da), <sup>1,3</sup>B<sup>-</sup> (133 Da), and (<sup>1,3</sup>A-CO<sub>2</sub>)<sup>-</sup> (107 Da), of which <sup>1,3</sup>A<sup>-</sup> was the main fragment ion. The fragment ions generated in the second mass spectrum would also increase in parallel with the number of hydroxyl substitutions increasing. Compounds **19** and **66** used luteolin as the basic nucleus, with characteristic fragment ions at *m/z* 285 and *m/z* 151 (<sup>1,3</sup>A<sup>-</sup>) in the second mass spectrum. Neither compound lost fragments of C<sub>3</sub>O<sub>2</sub>, which might be related to the substituents on the A ring. Compounds **19**, **42**, **50**, and **66** had hydroxyl substitutions at different positions on the B ring. The compounds with substituents on 3', 4', and 5' would not break between C1 and C4. The compound **70** only lost OCH<sub>3</sub>, CH<sub>3</sub>, and other fragments without other fragments of RDA reaction in the MS spectrum for the reason that the only substitution of OCH<sub>3</sub> on the structure hid the cleavage of the C ring. Figure 4C showed the possible cleavage pathway of Luteolin-7-O-glucoside.

Flavonols: In the negative ion mode, flavonols usually experienced the loss of OH, CO, CO<sub>2</sub>, C<sub>2</sub>H<sub>2</sub>O, B ring as well as the cracking of the C ring. Compared with flavones, the C ring of flavonols was easier to open. For example, compound **73** (Figure 4D) showed that [M-H]<sup>-</sup> molecular ion was at *m/z* 301.0354 and other abundant fragment ions, such as ions at *m/z* 273.0376, 178.9988 [<sup>1,2</sup>A]<sup>-</sup>, 151.0030 [<sup>1,3</sup>A]<sup>-</sup>, 121.0296 [<sup>1,2</sup>B]<sup>-</sup>, 107.0143 [<sup>0,4</sup>A]<sup>-</sup>. Among them, fragments were more common formed by the cracking of 1, 3 bonds. Meanwhile, it was compared with the standard product information and confirmed as quercetin. The structure of flavonol glycosides contained more hydroxyl groups, which easily formed [M-H]<sup>-</sup> quasi-molecular ion peaks, and further removed the sugar chain to form aglycone (Y<sub>0</sub><sup>-</sup>). Compounds **49**, **51**, **52**, **56**, **57**, **59**, **60**, **61**, **62**, **63**, **65**, **67**, **69**, and **72** were identified as flavonol glycosides. Among them, compounds **49**, **65**, **69**, and **72** were flavonol glycosides with kaempferol as the core, while **56**, **57**, **59**, **60**, **61**, **62**, **63**, and **67** were flavonol glycosides with quercetin as the core. Taking quercitrin as an example, the quasi-molecular ion peak of 447.0921 [M-H]<sup>-</sup> was first formed. Fragment ion at *m/z* 301.0354,

283.0223 represented the neutral loss of rhamnose and H<sub>2</sub>O. The ion at 151.0024 was produced by the breakage of 1, 3 bonds. In the flavonoid glycosides with quercetin as the basic nucleus, characteristic ion could be seen as at *m/z* 301 after the loss of the sugar chain, which could be used as a basis for determining whether the core is quercetin. Similarly, with kaempferol as the basic nucleus, the characteristic fragment ions at *m/z* 285 could also be regarded as a basis to judge whether kaempferol is the core.

Other flavonoids: compounds 14 and 15 were identified as bisphenirone flavonoids, which were a special type of flavonoids with a C6-C1-C6 skeleton. Compound 21 was identified as a flavonoid lignan compound with a complex structure, and compound 68 was identified as isoflavones.

### 2.3.2. Identification of Phenolic Acids

The mass spectrometry cleavage behavior of phenolic acids was relatively simple. In the negative ion mode, the primary mass spectrum mainly existed in the form of molecular ion peaks of [M-H]<sup>-</sup>. The secondary mass spectrum mainly showed the loss of CO<sub>2</sub> and H<sub>2</sub>O resulting in [M-H-CO<sub>2</sub>]<sup>-</sup> or [M-H-H<sub>2</sub>O]<sup>-</sup> fragment ions. Compounds 5, 6, 7, 8, 9, 23, and 32 were identified as phenolic acid. Fragments after losing CO<sub>2</sub> or COOH (45 Da) were usually seen in the mass spectrogram due to the common feature inclusion of COOH groups in these compound structures. Loss of substituents also occurred if the compound had other substituents such as hydroxyl groups. For example, compound 9 was speculated that its molecular formula might be C<sub>7</sub>H<sub>6</sub>O<sub>5</sub> based on the ion [M-H]<sup>-</sup> at *m/z* 169.0138. The fragment ions at 125.0240, 107.0141, 97.0341, and 69.0374 were inferred to be caused by the loss of CO<sub>2</sub>, H<sub>2</sub>O, and CO. Finally, it was verified that the compound corresponding to peak 9 was gallic acid (Figure 4E). In the same way, compounds 5, 6, 7, 8, 23, 32 were speculated as quinine acid, shikimic acid, malic acid, citric acid, protocatechuic acid, and 4-hydroxybenzoic acid, respectively. Fragment ions after loss of CO<sub>2</sub> and COOH were shown in the MS<sup>2</sup> of these 7 compounds. With different amounts of hydroxyl substitutions in compounds 6, 7, 9, 23, and 32, varying degrees of losing H<sub>2</sub>O could be seen in the corresponding fragments. The fragment information was shown in Table 2.

Table 2. Identification of the differential chemical constituents.

No.	tr /min	Compound	Molecular Formular	MS <sup>1</sup> (m/z)	MS <sup>2</sup> (m/z)	References
1	5.97	Monotropein	C <sub>16</sub> H <sub>22</sub> O <sub>11</sub>	389.1082[M-H] <sup>-</sup>	227.0543[M-H-Glc] <sup>-</sup> , 165.0544[M-H-Glc-COOH] <sup>-</sup>	[67]
2*	12.57	Procyanidin B2	C <sub>30</sub> H <sub>26</sub> O <sub>12</sub>	577.1321[M-H] <sup>-</sup>	451.0989[M-H-H <sub>2</sub> O-C <sub>6</sub> H <sub>5</sub> O <sub>2</sub> ] <sup>-</sup> , 425.0835[M-H-C <sub>8</sub> H <sub>8</sub> O <sub>3</sub> ] <sup>-</sup> , 407.0733[M-H-C <sub>8</sub> H <sub>8</sub> O <sub>3</sub> -H <sub>2</sub> O] <sup>-</sup> , 289.0685[M-H-TOP] <sup>-</sup> , 245.0768[M-H-TOP-CO <sub>2</sub> ] <sup>-</sup> .	[41–43]
3	12.85	Neohesperidin	C <sub>28</sub> H <sub>36</sub> O <sub>15</sub>	611.1235[M-H] <sup>-</sup>	300.9969[M-H-Neo] <sup>-</sup> , 275.0183	[29]
4*	13.22	Procyanidin B1	C <sub>30</sub> H <sub>26</sub> O <sub>12</sub>	577.1354[M-H] <sup>-</sup>	451.0986[M-H-H <sub>2</sub> O-C <sub>6</sub> H <sub>5</sub> O <sub>2</sub> ] <sup>-</sup> , 425.0829[M-H-C <sub>8</sub> H <sub>8</sub> O <sub>3</sub> ] <sup>-</sup> , 407.0745[M-H-C <sub>8</sub> H <sub>8</sub> O <sub>3</sub> -H <sub>2</sub> O] <sup>-</sup> , 289.0698[M-H-TOP] <sup>-</sup> , 245.0743[M-H-TOP-CO <sub>2</sub> ] <sup>-</sup> ,	[41–43]
5*	13.96	Procyanidin C1	C <sub>45</sub> H <sub>38</sub> O <sub>18</sub>	865.1952[M-H] <sup>-</sup>	739.1671[M-H-B ring-H <sub>2</sub> O] <sup>-</sup> , 713.1887[M-H- <sup>1,3</sup> B] <sup>-</sup> , 695.1411[M-H- <sup>0,3</sup> B] <sup>-</sup> , 577.1301,407.0782, 289.0712, 245.0800, 125.0236[ <sup>1,4</sup> A] <sup>-</sup>	[41–43]
6*	14.77	(+)-Catechin	C <sub>15</sub> H <sub>14</sub> O <sub>6</sub>	289.0724[M-H] <sup>-</sup>	245.0235[M-H-CO <sub>2</sub> ] <sup>-</sup> , 179.0341[M-H-B ring] <sup>-</sup> , 167.0339[ <sup>1,2</sup> A] <sup>-</sup> , 163.0385[M-H-H <sub>2</sub> O-B ring] <sup>-</sup> , 149.0234[ <sup>1,3</sup> B] <sup>-</sup> , 137.0237[ <sup>1,3</sup> A] <sup>-</sup> , 125.0235[ <sup>1,4</sup> A] <sup>-</sup> ,	[34,36]
7	18.23	Procyanidin B2 3'-O-	C <sub>37</sub> H <sub>30</sub> O <sub>16</sub>	729.1432[M-H] <sup>-</sup>	577.1324[M-H-Gallate] <sup>-</sup> , 441.0743[M-H-top-unit] <sup>-</sup>	[41–43]
8	20.93	kaempferitrin	C <sub>27</sub> H <sub>30</sub> O <sub>14</sub>	577.1329[M-H] <sup>-</sup>	430.0985[M-H-Rha] <sup>-</sup> , 283.0244[M-H-2Rha] <sup>-</sup> , 256.0179[M-H-2Rha-CO <sub>2</sub> ] <sup>-</sup>	[56]
9*	27.26	(-)-Epicatechin gallate	C <sub>22</sub> H <sub>18</sub> O <sub>10</sub>	441.0817[M-H] <sup>-</sup>	289.0713[M-H-C <sub>7</sub> H <sub>4</sub> O <sub>4</sub> ] <sup>-</sup> , 271.0630[M-H-C <sub>7</sub> H <sub>4</sub> O <sub>4</sub> -H <sub>2</sub> O] <sup>-</sup> , 179.0362[M-H-C <sub>7</sub> H <sub>4</sub> O <sub>4</sub> -B ring] <sup>-</sup> , 135.0242[ <sup>1,3</sup> A] <sup>-</sup> , 125.0247, 109.0292[B ring] <sup>-</sup>	[59]
10*	31.39	Hyperoside	C <sub>21</sub> H <sub>20</sub> O <sub>12</sub>	463.0859[M-H] <sup>-</sup>	301.0341[M-H-Glc] <sup>-</sup> , 271.0233, 151.0025[ <sup>1,3</sup> A] <sup>-</sup>	[62]
11	31.95	Astilbin	C <sub>21</sub> H <sub>22</sub> O <sub>11</sub>	449.1077[M-H] <sup>-</sup>	431.0945[M-H-H <sub>2</sub> O] <sup>-</sup> , 303.0478[M-H-Rha] <sup>-</sup> , 285.0380[M-H-Rha-H <sub>2</sub> O] <sup>-</sup> , 178.9977[M-H-Rha-H <sub>2</sub> O-B ring] <sup>-</sup> , 151.0030, 125.0240	[68]
12*	32.24	Quercetin 3-O-β-D-	C <sub>21</sub> H <sub>18</sub> O <sub>13</sub>	477.066[M-H] <sup>-</sup>	301.6332[M-H-Glc UA] <sup>-</sup> , 283.0230[M-H-GlcA-H <sub>2</sub> O] <sup>-</sup> , 151.0027[ <sup>1,3</sup> A] <sup>-</sup> , 107.0140[B	[61]
13	32.39	Acteoside	C <sub>29</sub> H <sub>36</sub> O <sub>15</sub>	623.1976[M-H] <sup>-</sup>	461.1651[M-H-C <sub>9</sub> H <sub>6</sub> O <sub>3</sub> ] <sup>-</sup> , 315.1087[M-H-C <sub>9</sub> H <sub>6</sub> O <sub>3</sub> -C <sub>6</sub> H <sub>10</sub> O <sub>4</sub> ] <sup>-</sup> , 179.0340, 161.0232,	[69]
14*	32.88	Isoquercitrin	C <sub>21</sub> H <sub>20</sub> O <sub>12</sub>	463.0866[M-H] <sup>-</sup>	301.0346[M-H-Glc] <sup>-</sup> , 151.0034[ <sup>1,3</sup> A] <sup>-</sup>	[64]
15	34.48	Narcissin	C <sub>28</sub> H <sub>32</sub> O <sub>16</sub>	623.1975[M-H] <sup>-</sup>	461.1654[M-H-Rha] <sup>-</sup> , 315.1075[M-H-Rha-Glc] <sup>-</sup>	[70]
16	35.19	Isoastilbin	C <sub>21</sub> H <sub>22</sub> O <sub>11</sub>	449.1073[M-H] <sup>-</sup>	431.0945[M-H-H <sub>2</sub> O] <sup>-</sup> , 303.0478[M-H-Rha] <sup>-</sup> , 285.0380[M-H-Rha-H <sub>2</sub> O] <sup>-</sup> , 178.9977[M-H-Rha-H <sub>2</sub> O-B ring] <sup>-</sup> , 151.0030, 125.0240	[68]
17*	35.35	Quercitrin	C <sub>21</sub> H <sub>20</sub> O <sub>11</sub>	447.0924[M-H] <sup>-</sup>	301.0354[M-H-Rha] <sup>-</sup> , 283.0223[M-H-Rha-H <sub>2</sub> O] <sup>-</sup> , 151.0024[M-H-Rha- <sup>1,3</sup> B] <sup>-</sup>	[55]
18	35.54	Isohemiphloin	C <sub>21</sub> H <sub>22</sub> O <sub>10</sub>	433.1131[M-H] <sup>-</sup>	269.0442[M-H-Glc] <sup>-</sup> , 178.9977[M-H-Glc-B ring] <sup>-</sup> , 151.0028[ <sup>1,3</sup> A] <sup>-</sup>	[71]
19	36.48	(-)-Epiarizolechin 3-O-	C <sub>22</sub> H <sub>18</sub> O <sub>9</sub>	425.0874[M-H] <sup>-</sup>	273.0478[M-H-C <sub>7</sub> H <sub>4</sub> O <sub>4</sub> ] <sup>-</sup> , 151.0390[ <sup>1,3</sup> A] <sup>-</sup> , 137.0234, 125.0237[ <sup>1,4</sup> A] <sup>-</sup>	[72]
20	36.83	Rhamnitrin	C <sub>22</sub> H <sub>22</sub> O <sub>11</sub>	461.0713[M-H] <sup>-</sup>	312.9958[M-H-Rha] <sup>-</sup> , 285.0016[M-H-Rha-OCH <sub>3</sub> ] <sup>-</sup>	[73]
21	37.89	Cascaroside A	C <sub>27</sub> H <sub>32</sub> O <sub>14</sub>	579.2082[M-H] <sup>-</sup>	371.1496[M-H-Glc-CH <sub>2</sub> OH] <sup>-</sup> , 256.1267[M-H-2Glc] <sup>-</sup> , 228.0413[M-H-2Glc-CO] <sup>-</sup>	[74]
22	38.64	Apigenin-7-O-rutinoside	C <sub>27</sub> H <sub>30</sub> O <sub>14</sub>	577.0974[M-H] <sup>-</sup>	415.0855[M-H-Rha] <sup>-</sup> , 269.0745[M-H-Rha-Glc] <sup>-</sup> , 225.0675[M-H-Rha-Glc-CO] <sup>-</sup>	[75]
23	38.85	Apimaysin	C <sub>27</sub> H <sub>28</sub> O <sub>13</sub>	559.1580[M-H] <sup>-</sup>	397.0178[M-H-Rha] <sup>-</sup> , 280.4159[M-H-C <sub>12</sub> H <sub>18</sub> O <sub>8</sub> ] <sup>-</sup>	[76]

Note: (1)\*: comparison with reference standards; (2) Glc: D-glucose; Rha: L-rhamnose; Ara: Glc UA: Glucuronic acid.

### 2.3.3. Identification of Phenylpropanoids

Phenylpropanoids were generally a class of compounds composed of C6-C3 as the basic unit, including simple phenylpropanoids, coumarins, and lignans. Our study inferred 4 phenylpropanoids, including simple phenylpropanoids (**25**, **36**, **38**) and coumarins (**17**), respectively. Simple amphetamine compounds were more likely to lose neutral molecules such as H<sub>2</sub>O, CO, and CO<sub>2</sub> during the cracking progress. For example, compound **36** continuously lost H<sub>2</sub>O, CO, and CO<sub>2</sub> resulting in the generation of fragment ions such as [M-H-CO<sub>2</sub>-CO]<sup>-</sup> (109.0440 Da), [M-H-CO<sub>2</sub>-CO-H<sub>2</sub>O]<sup>-</sup> (89.0413 Da). The compound **36** was identified ultimately as caffeic acid based on the primary mass spectrometry and secondary debris ions of the compound combined with relevant literature. Similarly, fragment ions after loss of CO<sub>2</sub> were presented in MS<sup>2</sup> of p-Coumaric acid. Compound **38** chlorogenic acid belonged to the class of caffeoylquinic acid, and there were two possible cleavage methods at the position of the ester bond. One was that the acyl-oxygen bond fractured leading to the loss of a molecule of caffeoyl (162 Da) and obtained an ion at *m/z* 191.0554. The second was that the fragments ions at *m/z* 173 and 179 were obtained after the alkoxy group were broken. The possible cleavage pathway was shown in figure 4F.

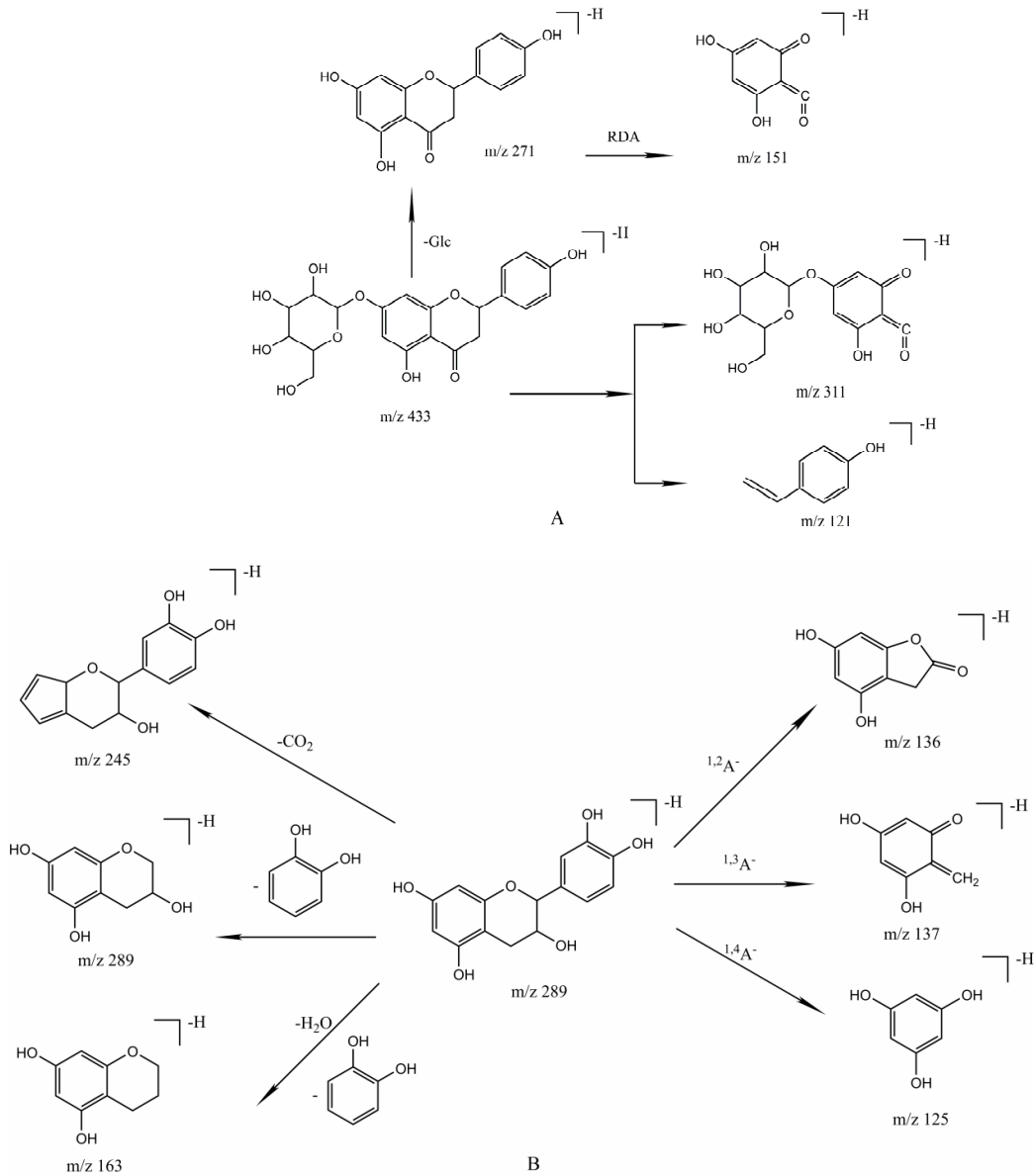
### 2.3.4. Identification of Tannins

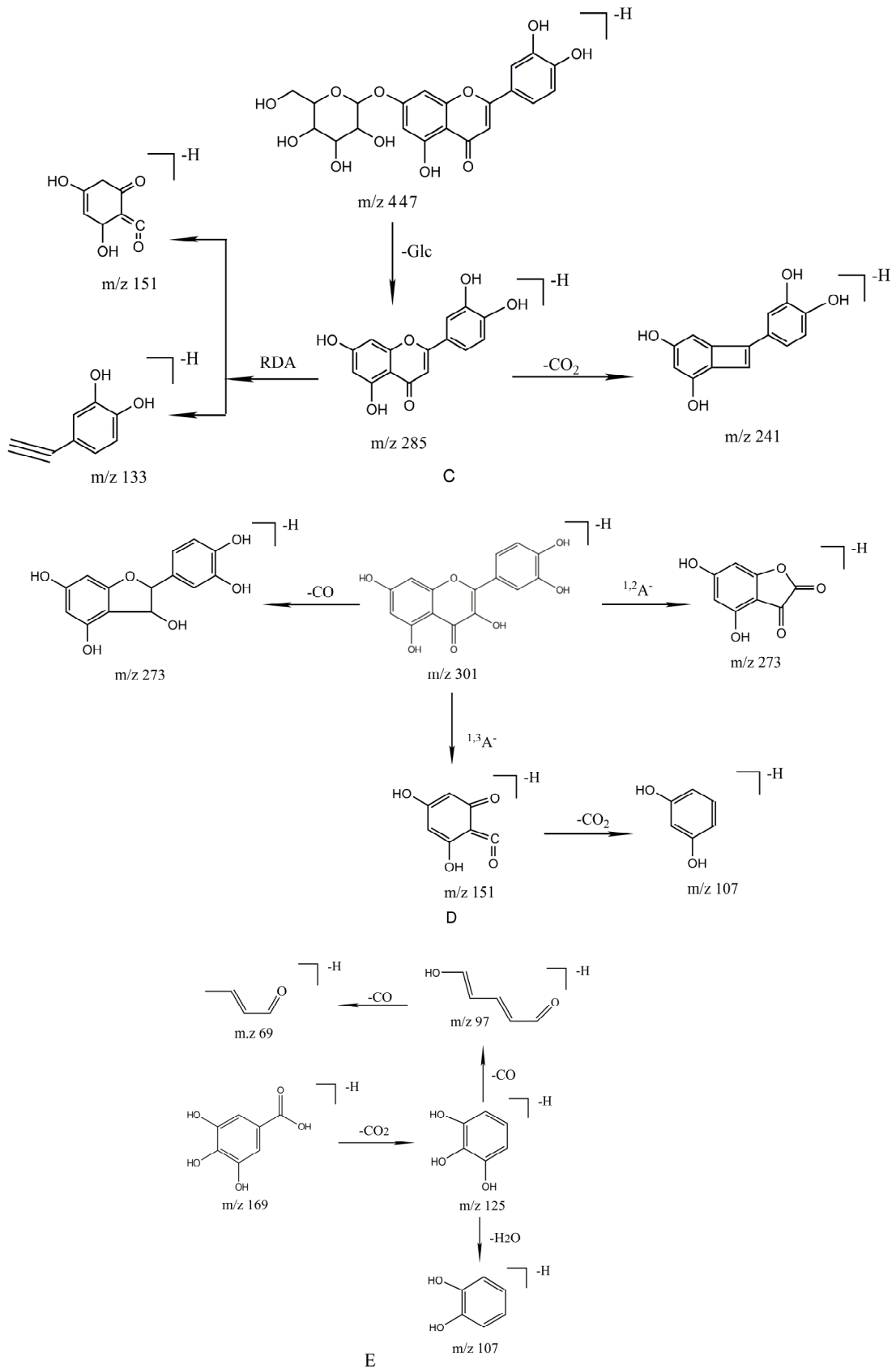
Compounds **11**, **26**, **27**, **28**, and **45** belonged to tannins, among which **11** were hydrolysable tannins and the rest were condensed tannins. The basic composition of condensed tannins is catechin/epicatechin, which is a polymer formed by polymerization of C4-C6 bonds or C4-C8 bonds (esters formed by dehydrated with gallic acid). The cracking methods of proanthocyanidin polymers mainly included the fragmentation between flavanes and the RDA reaction. There were two possibilities for the break between flavanes. On the one hand, it lost the neutral fragments of the top unit T-unit (TOP) which was only connected to other units by C4 bonds to form the fragment at *m/z* 287. On the other hand, it lost the bottom unit B-unit (BASE) which was connected to other units by C6 or C8 bonds to form the fragment at *m/z* 289. Flavanes generally underwent a RDA reaction and lost a neutral structure of C<sub>8</sub>H<sub>8</sub>O<sub>3</sub> (152 Da). Taking the procyanidin B2 (Figure 4G) as an example, the ion fragment at *m/z* 289 was produced by losing a molecule of catechin. The fragment ion at *m/z* 425 was produced by RDA rearrangement, and an ion at *m/z* 407 was produced by continuing to lose one molecule of H<sub>2</sub>O based on the ion fragment at *m/z* 425. Another possible way of cleavage was to lose one molecule of H<sub>2</sub>O first, and then lose one C<sub>6</sub>H<sub>5</sub>O<sub>2</sub> (109 Da) fragment to get an ion at *m/z* 451. The cleavage law of trimer procyanidin C1 and proanthocyanidin B2 was virtually identical. At the same time, there was also a dimer anion fragment at *m/z* 577 by losing one top-unit and a monomeric anion fragment at *m/z* 289 by losing two top-units. Compound **45** showed a [M-H]<sup>-</sup> ion at *m/z* 729.1441. The fragment ions at *m/z* 577.1324 and 441.0743 were produced by the loss of C<sub>7</sub>H<sub>4</sub>O<sub>4</sub> (152 Da) and a T-unit. The specific fragment information was shown in Table 2.

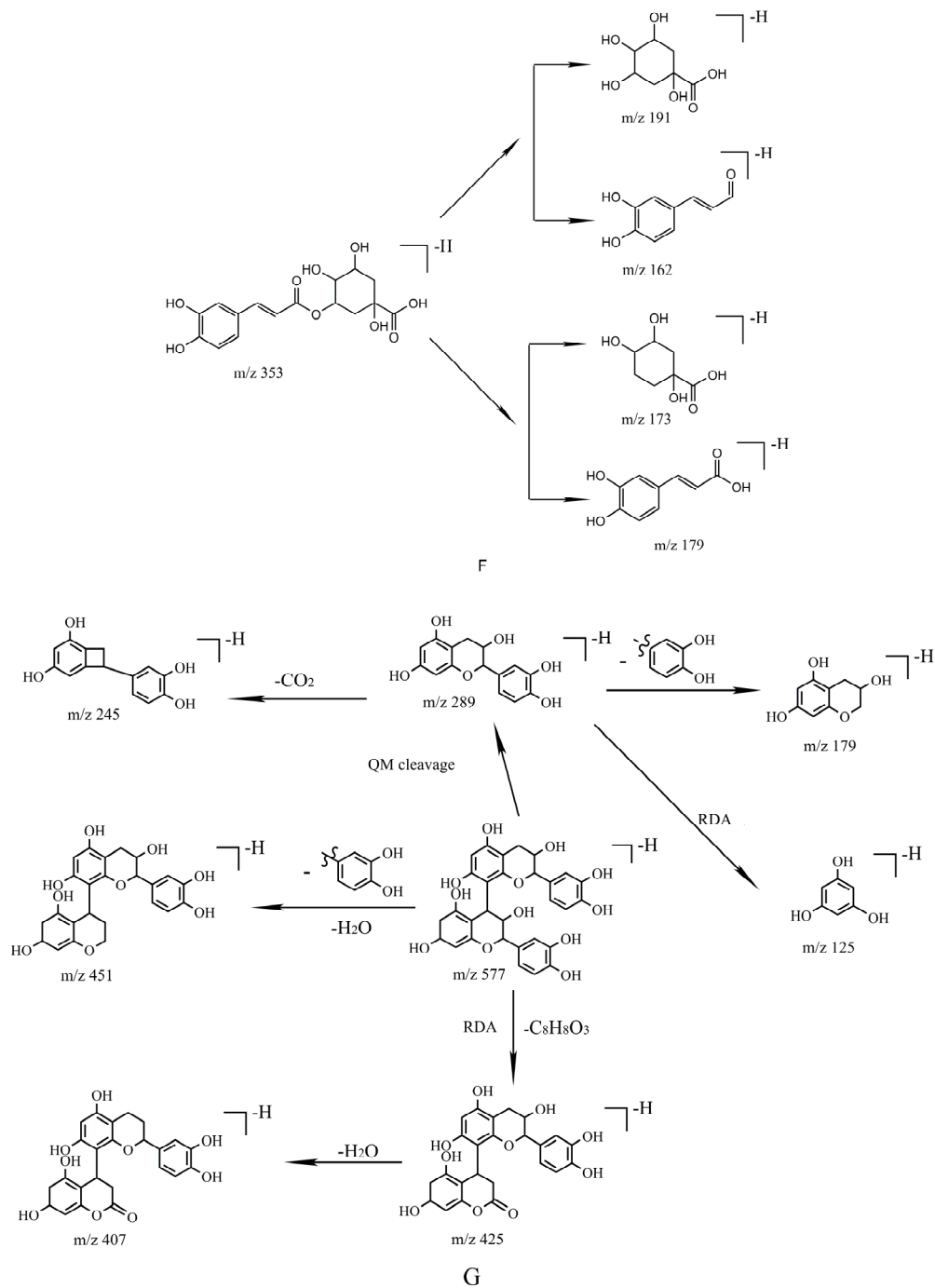
### 2.3.5. Identification of Glycosides

Glycosides were a class of compounds formed by connecting saccharides or saccharides derivatives with another non-sugar substance through the carbon atom of the terminal group of the sugar. Compounds **12**, **13**, **18**, **24**, **31**, **33**, **37**, **40**, **43**, **46**, **47**, **48**, and **58** were identified as glycosides. The 13 compounds were all oxyglycosides formed by connecting oxygen atoms with sugars, among which compounds **33** and **58** were ester glycosides and the others were phenol glycosides, respectively. The characteristic ion fragments after the loss of one glucose (162 Da) could be seen clearly from the MS<sup>2</sup> of these compounds. The ion at *m/z* 101.0437 was formed when compound **43** lost one molecule of xylose and glucose successively. Compound **24** was linked to glucuronic acid, and the

fragment ion after the loss of glucuronic acid (176 Da) could also be clearly visible from MS<sup>2</sup>. The details were shown in Table 2.







**Figure 4.** The possible fragmentation pathways of Prunin (A), (+)-catechin (B), Luteolin-7-O-glucoside (C), Quercetin (D), Gallic acid (E), Chlorogenic acid (F), and Procyanidin B2 (G) in *Taxilli Herba*.

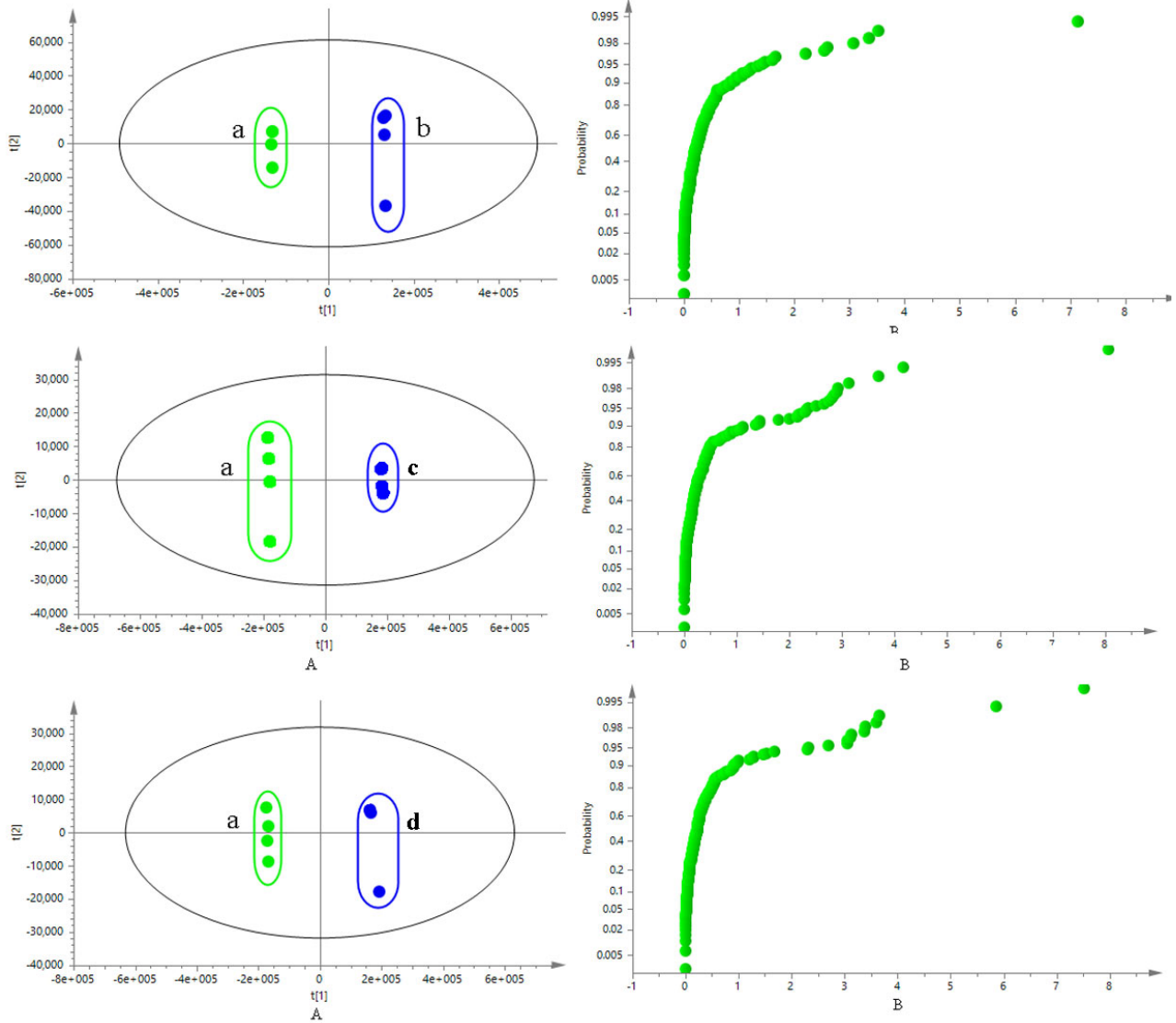
#### 2.4. Analysis of the Differential Constituents of TH from Different Hosts

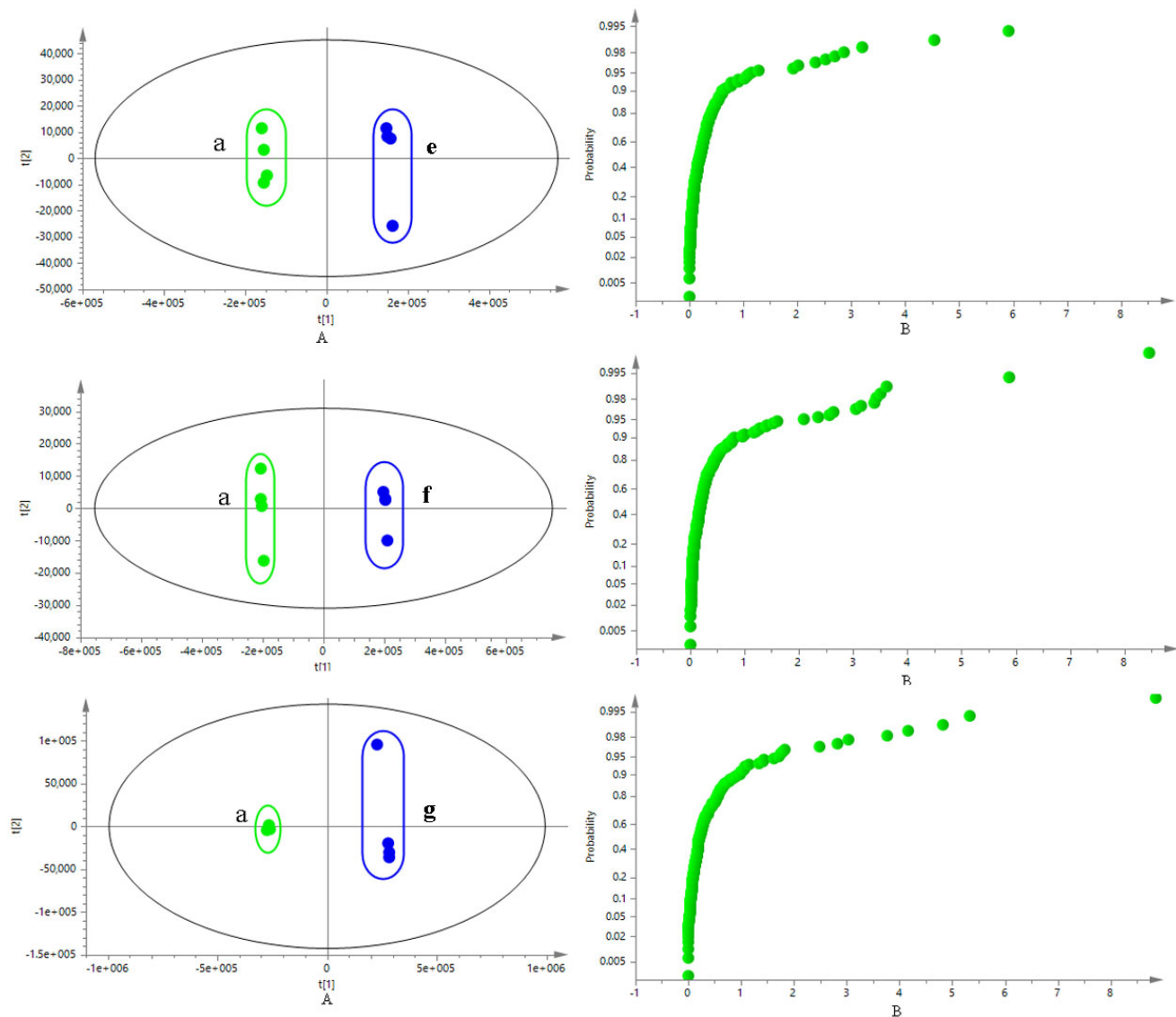
##### 2.4.1. PLS-DA of the Samples

A pattern-supervised identification method PLS-DA analysis was used to compare the chemical constituents in TH from different hosts comprehensively. The potential differential chemical constituents were found based on the VIP obtained from the PLS-DA model, and the T-test was used to verify whether the differential chemical constituents in multi-dimensional statistics had significant differences in one-dimensional statistics,



where  $p < 0.05$  indicated significant differences. In this experiment, the samples from the other 6 common hosts were compared with the samples from *Morus alba* L. and analyzed by PLS-DA. The results were shown in Figure 5. Two samples from different hosts were clearly separated along the PIC axis, and the model verification results ( $R^2Y = 0.496, 0.123, 0.602, 0.034, 0.001, 0.153$ ;  $Q^2 = -0.207, -0.247, -0.297, -0.264, -0.263, -0.289$ , respectively.) showed that the models were effective and reliable.





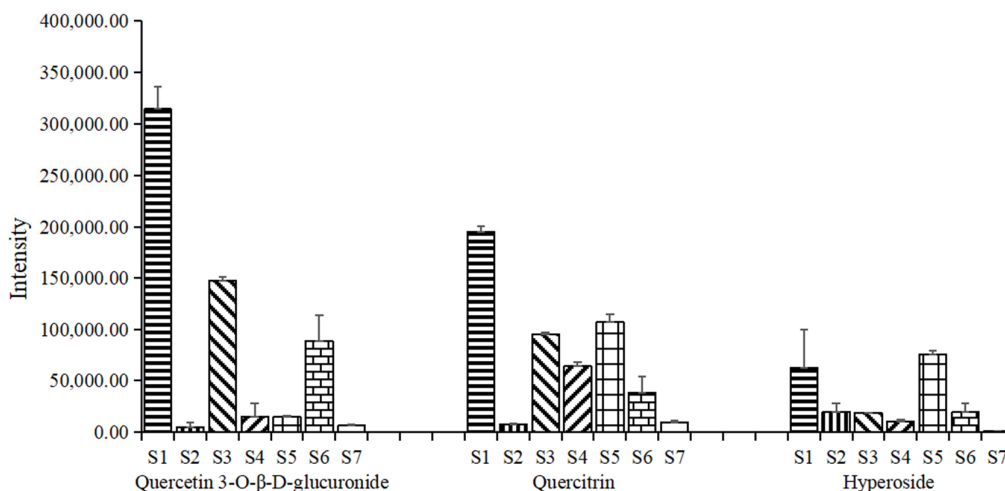
**Figure 5.** PLS-DA scores plot and VIP score plot of TH samples from different hosts. (*Morus alba* L. (a), *Liquidambar formosana* Hance. (b), *Ilex latifolia* Thunb. (c), *Crataegus pinnatifida* Bge. var. *major* N.E.Br. (d), *Passiflora edulis* Sims. (e), *Pyrus pyrifolia* (Burm. F.) Nakai. (f), and *Cinnamomum camphora* (L.) Presl (g).)

#### 2.4.2. Identification of the Differential Chemical Constituents

A total of 23 differential chemical constituents were initially identified in samples from 7 hosts, including monotropein, procyanidin B2, procyanidin B2 3'-O-gallate, hyperoside, quercetin 3-O- $\beta$ -D-glucuronide, isoquercitrin, quercitrin, procyanidin B1, procyanidin C1, (+)-catechin, (-)-epicatechin gallate, acteoside, narcissin, (-)-epiafzelechin 3-O-gallate, cascaroside A, apigenin-7-O-rutinoside, apimaysin, kaempferitrin, isohemiphloin, isoastilbin, astilbin, rhamnitrin, neohesperidin dihydrochalcone. The results and the 85 constituents identified in different samples from 7 hosts are shown in Table 2 and Supplementary Table S1, respectively 2.4.3. Relative Content of Common Differential Chemical Constituents.

The three common differential constituents were quercetin 3-O- $\beta$ -D-glucuronide, quercitrin and hyperoside. The relative content was represented by the corresponding peak area of common differential constituents in each group of samples. The average value and standard deviation of the peak area of the same chemical constituent in different

samples were calculated to obtain the relative content changes of common different constituents between different samples. The results showed that TH from *Morus alba* L. contained higher levels of these 3 constituents, and TH from *Ilex latifolia* Thunb. contained high relative content of quercetin 3-*O*- $\beta$ -D-glucuronide and quercitrin, and TH from *Passiflora edulia* Sims. contained high relative content of quercitrin and hyperoside. The results were shown in Figure 6.



**Figure 6.** Relative contents of the common differential chemical constituents.

### 3. Discussion

As mentioned previously, Taxilli Herba is a semi parasitic plant with complex hosts. The demand for TH in clinical is gradually increasing as well. In recent years, there have been few research reports on the chemical composition of TH. What's more, the TH from different hosts currently circulating on the market are difficult to distinguish based on their appearance. In this study, we tried to establish a methodology to exploring the chemical constituents in TH. There were 73 chemical constituents identified ultimately in TH from *Morus alba* L., and flavonoids were the main constituents (Table 1). The scores scatter plot of PLS-DA showed that the samples from *Morus alba* L. and other hosts were significantly divided into two groups (Figure 5). 23 differential chemical constituents were initially identified of samples from 7 hosts, and the relative contents of three common differential constituents of quercetin 3-*O*- $\beta$ -D-glucuronide, quercitrin and hyperoside in TH from *Morus alba* L. were higher than that of samples from other hosts (Figure 6). The results revealing possible components in TH will help us to have a deeper understanding of this medicine material, and can also be used as a basis for distinguishing samples of TH from different hosts. As far as the current situation is concerned, the diversified sources of medicinal materials are an important reason for the uneven quality of TH. At present, there are many medicinal materials from different host plants on the market, and TH from *Morus alba* L. is the most widely used clinically. However, the impact of the hosts on the quality of the medicinal materials in many aspects is still unknown. Systematic research on multiple levels from ingredients to curative effects to explain whether the effects of TH from different hosts are the same or different is also a question worthy of discussion. The most important thing is that this study could provide basic information for the quality formation of TH.

## 4. Materials and Methods

### 4.1. Chemicals and Reagents

The standard substances of isosakuranetin and quercetin 3-*O*- $\beta$ -*D*-glucuronide were purchased from Nanjing Liangwei Biotechnology Co., Ltd. (Nanjing, China). Hyperin, auicularin, catechin, quercetin 3-*O*-(6''-*O*-galloyl)- $\beta$ -galactoside and quercetin 3-*O*-(6''-*O*-galloyl)- $\beta$ -glucoside were supplied by Shanghai Yuanye Biotechnology Co., Ltd. (Shanghai, China). Chlorogenic acid was received from Baoji Chengguang Biotechnology Co., Ltd. (Baoji, China). Isolquercitrin was provided by Chengdu Chroma Biotechnology Co., Ltd. (Chengdu, China). Kaempferitrin was obtained from Chengdu Alfa Biotechnology Co., Ltd. (Chengdu, China). Protocatechuic acid was acquired from Shanghai Winherb Medical Technology Co., Ltd. (Shanghai, China). Quercetrin was purchased from the National Institute for the control of Pharmaceutical and Biological Products (Beijing, China). Rutin, quercetin, and gallic acid were purchased from the National Institutes for Food and Drug Control (Beijing, China). The purity of all compounds was more than 98% determined by HPLC. Formic acid, methanol, and acetonitrile of HPLC grade (Merck, Darmstadt, Germany). Ultra-pure water was prepared by a Milli-Q water purification system (Millipore, Bedford, MA, USA).

### 4.2. Plant Materials

TH from 7 different hosts were collected from two regions in Guangxi Province in China, and 4 batches of samples from each host were dried under the same conditions. See Table 3 for detailed information. The botanical origins of the materials were authenticated by Professor Xunhong Liu (Department for Authentication of Chinese Medicines, School of Pharmacy, Nanjing University of Chinese Medicine, Nanjing, China). Voucher specimens were deposited in the laboratory of Chinese medicine identification, Nanjing University of Chinese Medicine.

**Table 3.** Information of Taxilli Herba samples from 7 different hosts.

No.	Family	Hosts	Producing Area	Harvest Time
S1	Moraceae	<i>Morus alba</i> L.	Wuzhou Guangxi	2020.12.28
S2	Hamamelidaceae	<i>Liquidambar formosana</i> Hance.	Wuzhou Guangxi	2020.12.28
S3	Aquifoliaceae	<i>Ilex latifolia</i> Thunb.	Wuzhou Guangxi	2019.5.19
S4	Rosaceae	<i>Crataegus pinnatifida</i> Bge. var. <i>major</i> N.E.Br.	Wuzhou Guangxi	2019.5.19
S5	Passifloraceae	<i>Passiflora edulia</i> Sims.	Wuzhou Guangxi	2019.5.20
S6	Rosaceae	<i>Pyrus pyrifolia</i> (Burm. F.) Nakai.	Wuzhou Guangxi	2019.5.19
S7	Lauraceae	<i>Cinnamomum camphora</i> (L.) Presl.	Gongcheng Guangxi	2020.12.21

### 4.3. UFLC-Triple TOF-MS/MS analysis of TH

#### 4.3.1. Preparation of Standard and Sample Solutions

A mixed standard stock solution of 15 standard substances (quercetin 3-*O*- $\beta$ -*D*-glucuronide, isosakuranetin, quercetin 3-*O*-(6''-*O*-galloyl)- $\beta$ -galactoside, quercetin 3-*O*-(6''-*O*-galloyl)- $\beta$ -glucoside, hyperin, auicularin, isolquercitrin, chlorogenic acid, catechin, kaempferitrin, protocatechuic acid, quercetrin, rutin, quercetin, and gallic acid) was prepared with 50% methanol at a final concentration of 5  $\mu$ g/mL. The diluted solutions were used for UFLC-Triple TOF MS/MS analysis. All the solutions were stored at 4 °C for further analysis.

All samples were crushed and passed through 50-mesh. Accurately 0.5 g of TH powders were weighed and ultrasonically extracted with 15 mL of 50% methanol for 30

min in a conical flask at room temperature. After the extraction was paused for a few minutes, the supernatant was taken and centrifuged at 13000 rpm/min for 10min (H1650-W high speed centrifuge, Hunan Xiangyi Laboratory Instrument Development Co., Ltd., Hunan, China). The supernatant was filtered through 0.45  $\mu\text{m}$  membrane (Jinteng laboratory equipment Co., Ltd., Tianjin, China) prior to injection of UFLC-Triple TOF-MS/MS analysis.

#### 4.3.2. UFLC-Triple TOF-MS/MS Conditions

The UFLC system (Shimadzu, Kyoto, Japan) was used for sample analysis. The separation was conducted by an Agilent ZORBAX SB-C18 column (4.6 mm  $\times$  250 mm, 5  $\mu\text{m}$ ) at 30  $^{\circ}\text{C}$ . The mobile phase was composed of methanol-acetonitrile (1:1) (A) and 0.4% formic acid water (B) with the gradient elution: 0–5 min, 2%–6% A; 5–6 min, 6%–10% A; 6–8 min, 10%–15% A; 8–12 min, 15%–18% A; 12–18 min, 18%–21% A; 18–21min, 21%–23% A; 21–26 min, 23%–25% A; 26–30 min, 25%–27% A; 30–33 min, 27%–40% A; 33–38 min, 40%–50% A; 38–40 min, 50%–2% A; 40–45 min, 2%–2% A. The injection volume was 10  $\mu\text{L}$  and the flow rate was 1.0 mL/min.

Mass spectrometry (MS) detection was performed by AB Sciex Triple TOF TM 5600 system-MS/MS (AB SCIEX, Framingham, MA, USA), equipped with an electrospray ionization (ESI) source in negative ion mode. The optimized MS conditions were set as follows: the ion source temperature (TEM): 600  $^{\circ}\text{C}$ ; the flow rate of curtain gas (CUR): 40 psi; the flow rate of nebulization gas (GS1): 60 psi; the flow rate of auxiliary gas (GS2): 60 psi; the ion spray voltage floating (ISVF): 4500 V; the collision energy: –10 V; the declustering potential: –100 V. TOF MS and TOF MS/MS were scanned with the mass range of  $m/z$  100–2000 and 50 ~ 1500, respectively.

#### 4.3.3. Identification of the Constituents

On the one hand, it was identified by compared with the previously established chemical composition database, and verified with the retention time and mass spectrometry data of the standards. On the other hand, the identification of other unknown chemical composition was inferred based on the fragment information of MS/MS with the combination of SciFinder (<https://scifinder.cas.org/>), HMDB (<https://hmdb.ca/>), CNKI (<https://kns.cnki.net/>) and related literature.

### 4.4. Analysis of Differential Constituents in TH from Different Hosts

#### 4.4.1. Chromatographic Processing and Statistical Analysis

Mass spectrometry data processed by Peakview 1.2 (Sciex AB, Framingham, MA, USA) and Markerview 1.2.1 (Sciex AB, Framingham, MA, USA) software were imported into SIMCA-P 13.0 (Umetrics AB, Umea, Sweden) software for analysis. Based on the above qualitative results, PLS-DA using the SIMCA-P 13.0 software (Umetrics AB, Umea, Sweden) was used to perform dimensionality reduction analysis on the data to obtain information about differences between groups. The difference chemical components of TH from different hosts were found according to the VIP and  $p$ -value obtained by the PLS-DA model.

#### 4.4.2. Identification of the Differential Chemical Constituents

Except for comparison with the constituents in Table 1, other unknown differential constituents were identified through databases and literature including SciFinder (<https://scifinder.cas.org/>), HMDB (<https://hmdb.ca/>), CNKI (<https://kns.cnki.net/>).

## 5. Conclusions

In our study, an efficient method based on UFLC-Triple TOF-MS/MS was established for the qualitative characterization of Taxilli Herba from *Morus alba* L. The results showed that 73 constituents were identified in total including flavonoids and phenolic acids, etc. The fragmentation pathways of flavonoids, phenolic acids, phenylpropanoids, tannins and glycosides were preliminarily deduced by the fragmentation behavior of the major constituents. Simultaneously, the results of PLS-DA showed that TH samples from *Morus alba* L and other hosts were clearly separated. 23 differential characteristic constituents were screened based on PLS-DA scores plot and VIP plot, and three common differential constituents showed different changing laws. In a word, the results could help us have a clearer understanding of the chemical constituents of TH and reveal differential constituents in TH from different hosts. The findings will contribute to comprehensive evaluation and intrinsic quality control of TH and provide a scientific basis for the identification of TH from different hosts.

**Supplementary Materials:** The following is available, Table S1: identification of 85 constituents in Taxilli Herba from 7 hosts by UFLC-Triple TOF-MS/MS.

**Author Contributions:** J.Y., S.L. and X.L. conceived and designed the experiments; J.Y., H.C., N.W., Z.C., C.C. and S.Y. performed the experiments; J.Y., H.C., Y.M., L.W. and W.W. analyzed the data; J.Y. wrote the manuscript; J.Y. and Z.C. revised the manuscript; L.L. and L.Z. provided the samples of Taxilli Herba. All authors read and approved the final manuscript.

**Funding:** This research was funded by Guangxi Key Laboratory of Zhuang and Yao Ethnic Medicine, grant number GXZYKF2020-2 and the General Project of Natural Science Research in Universities of Jiangsu Province, grant number 20KJD360001.

**Institutional Review Board Statement:** Not applicable.

**Informed Consent Statement:** Not applicable.

**Data Availability Statement:** The data presented in this study are available in Supplementary Materials.

**Conflicts of Interest:** The authors confirm that there are no conflicts of interest.

**Sample Availability:** Samples of the Taxilli Herba are available from the authors

## References

1. National Pharmacopoeia Committee. *Pharmacopoeia of the People's Republic of China. Part I*; Chemical Industry Press: Beijing, China, 2020; p. 312.
2. Zhang, H.; Huang, F.Y.; Su, B.W. Impacts of different host trees on the quality of Taxillus Chinensis. *Mod. Trad. Chin. Med. Mat. Sci. Tech.* **2016**, *18*, 1182–1187.
3. Lv, L.; Zhu, Y.M.; Xu, M.D. Study on flavones from Taxillus Chinensis (DC.) Danser and assay of its quercetin. *Chin. Tradit. Pat. Med.* **2004**, *26*, 68–70.
4. Chen, J.T.; Feng, F. Studies on chemical constituents of Taxillus sutchuenensis. *J. Chin. Med. Mater.* **2007**, *30*, 1393–1395.
5. Li, M.R.; Li, L.Q.; Ma, X.Y.; Hu, X.B. Studies on chemical constituents of Song-Ji-Sheng isolation and identification of d-catechin and quercitrin from the leaves of Guang-Ji-Sheng (Taxillus Chinensis (DC.) Danser). *West China J. Pharm. Sci.* **1986**, *1*, 131–134.
6. Li, L.Q.; Li, M.R. Isolation and identification of hyperin from the the leaves of Chinensis (DC.) Danser. *West China J. Pharm. Sci.* **1989**, *4*, 153–154.
7. Li, L.Q.; Li, M.R.; Yang, Z.B.; Hu, X.B. Studies on the chemical constituents of Hairy leaf Taxillus (Taxillus nigrans). *Chin. Tradit. Herb. Drugs.* **1995**, *26*, 118–121.
8. Huang, F.T.; Liu, R.Y.; Chai, Z.S.; Su, B.W.; Zhu, K.X.; Lu, H.L.; Li, Y.H. Study on aromatic components in essential oils of Taxillus Chinensis from different cold/hot properties hosts by GC-MS. *Asia-Pac. Trad. Med.* **2019**, *15*, 61–66.
9. Li, B.; Jia, N.F.; Zhu, X.Y.; Lv, R.M.; Liao, P.Y. Studies on chemical constituents of essential oils from the two different host's Taxillus chinensis by SFE-CO<sub>2</sub>. *Lishizhen Med. Mater. Med. Res.* **2013**, *24*, 837–838.
10. Wang, Y.L.; Zhang, W.L.; Zhou, H.H.; Long, X.Q.; Lou, T.T.; Zhou, C.; Xu, H. Research on the effects of Taxillus sutchuenensis volatile components in different host plants. *Chin. J. Ethnomed. Ethnopharm.* **2015**, *24*, 17–32.
11. Liao, P.Y.; Li, B.; Zhu, X.Y.; Shao, M.M.; Lu, R.M. Volatile constituents from Taxillus chinensis (DC.) Danser extracted by steam distillation and CO<sub>2</sub> supercritical fluid extraction. *Lishizhen Med. Mater. Med. Res.* **2012**, *23*, 32–34.

12. Ding, B.; Dai, Y.; Hou, Y.L.; Wu, X.M.; Chen, X.; Yao, X.S. Four new hemiterpenoid derivatives from *Taxillus chinensis*. *Fitoterapia*. **2013**, *86*, 1–5.
13. Wang, J. Sang parasitic research overview. *J. Pract. Trad. Chin. Int. Med.* **2018**, *32*, 74–77.
14. Li, D.; Li, A.P.; Li, K.; Liu, Y.T.; Qin, X.M. Reseach on qualitative analysis of chemical coposition of traditional chinese medicine by liqiud chromatography-mass spectrom. *Drug. Eval. Res.* **2020**, *43*, 2112–2119.
15. Wong, Ka.H.; Valentina Razmovski-Naumovski.; Li, K.M.; George Q, Li.; Kelvin, Chan. Differentiating *Puerariae Lobatae Radix* and *Puerariae Thomsonii Radix* using HPTLC coupled with multivariate classification analyses. *J. Pharm. Biomed. Anal.* **2014**, *95*, 11–19.
16. Sun, L.L.; Ren, X.L.; Zhang, H.J.; Wang, M.; Liu, Y.N.; Deng, Y.R.; Qi, A.D. Research on processing of *Radix Polygoni Multiflori* based on UPLC fingerprints and chemometrics. *Chin J. Tradit. Chin. Med. Pharm.* **2017**, *32*, 2194–2197.
17. Zhou, X.D.; Tang, L.Y.; Wu, H.W.; Zhou, G.H.; Wang, T.; Kou, Z.Z.; Li, S.X.; Wang, Z.J. Chemometric analyses for the characterization of raw and processed seeds of *Descurainia sophia* (L.) based on HPLC fingerprints. *J Pharm Biomed Anal.* **2015**, *111*, 1–6.
18. Zhang, D.K.; Han, X.; Li, R.Y.; Niu, M.; Zhao, Y.L.; Wang, K.B.; Yang, M.; Xiao, X.H. Analysis on characteristic constituents of crude *Aconitum carmichaelii* in different regions based on UPLC-Q-TOF-MS. *China J. Chin. Mater. Med.* **2016**, *41*, 463–469.
19. Wu, H.G.; Zhong, S.M.; Peng, L.; Wu, W.G.; Li, Z.; Li, W.L. HPLC-ESI-MS/MS analysis of active component differences in *Astragalus* before and after honey-fried. *J. Chin. Mass Spectrom. Soc.* **2020**, *41*, 637–647.
20. Su, N. Study on fragmentation regularity and HPLC/MS analysis of carbohydrate. D, Hunan Normal University, Hunan, **2010**.
21. Rutherford, D.; Richtmyer, NK. Primeverulose (6-O- $\beta$ -D-xylopyranosyl-D-fructose) and some derivatives thereof. *Carbohydr. Res.* **1969**, *11*, 41–345.
22. Huang, L.P.; Huang, L.Y.; Li, Z.X. Analysis of six nucleosides from *Goodyera matsumurana* by high performance liquid chromatography-mass spectrometry. *Chin. J. Hosp. Pharm.* **2015**, *35*, 678–682.
23. Yin, Z.H. Quantum Chemistry Study on ESI-ITMs<sup>n</sup> Fragmentation of Caffeoylquinin Acids. Ph.D. Thesis, Jiamusi University, Heilongjiang, China, 2017.
24. Liu, B.M.; Lin, X. Study on the mass spectra of shikimic acid. *J. Guangxi Acad. Sci.* **2006**, *22*, 469–470+474.
25. Mao, Q.P.; He, M.Z.; Huang, X.F.; Du, H.; Luo, D.W.; Zhang, H.Q.; OuYang, H.; Fu, G.Q.; Fei, N.; Zhong, K. Analysis of chemical components of *Perilla frutescens* based on ultra high performance liquid chromatography-quadrupole/time of flight mass spectrom(UHPLC-Q/TOF MS). *Mod. Food Sci. Technol.* **2021**, *37*, 282–291+259.
26. Yang, R.R. Quality Control of *Caulis Spatholobi* and Its antithromboticeffect on zebrafish. Ph.D. Thesis, Beijing University of Chinese Medicine, Beijing, China, 2018.
27. Yang, J.; Li, Z.L.; Zhou, L.; Zuo, L.H.; Wang, S.; Li, D.L.; Kang, J.; Sun, Z.; Zhang, X.J. Multiple constituents study of *Qianliexin* Capsule based on UHPLC-Q-OrbitrapHRMS. *Chin. Tradit. Herb. Drugs.* **2019**, *50*, 3291–3301.
28. Ma, S.Z.; Qin, H.Y.; Long, F.; Yu, W.; OuYang, H.; Chen, W.; Han, B. Identification and fragmentation regularity of polyphenol compounds from *Galla Quercina* by UPLC-MS/MS. *Chin. Tradit. Herb. Drugs.* **2017**, *48*, 4632–4638.
29. Allen, F.; Greiner, R.; Wishart, D.; Competitive fragmentation modeling of ESI-MS/MS spectra for putative metabolite identification. *Metabolomics.* **2015**, *11*, 98–110.
30. Kaneda, M. Lilioideside a from *Lilium longiflorum*: Synthesis and absolute configuration. *Phytochemistry.* **1990**, *29*, 3559–3564.
31. Chen, Y.Q.; Fan, X.S.; Zhu, Z.H.; Peng, G.P.; Duan, J.A. Chenical constituents of shuangshen pingfei granules by UPLC-ESI-Q-TOF-MS/MS. *Chin. Tradit. Herb. Drugs.* **2020**, *51*, 321–329.
32. Ishii, H.; Kobayashi, J.I.; Seki, H.; Ishikawa, T. Toddacoumaquinone, a unique coumarin-naphthoquinone dimer, from *toddalia asiatica* (L.) lam. (t. aculeata pers.). *Chem. Pharm. Bull.* **2008**, *40*, 1358–1359.
33. Jaing, H.Q.; Rong, R.; Lv, H.Q. Identification of chemical composition in *Rhubarb* by high performance liquid chromatography with mass spectrometry. *Lishizhen Med. Mater. Med. Res.* **2011**, *22*, 1705–1706.
34. Diao, Y.P. Chemical composition of compound *Ziling* Capsule by UPLC-ESI-QTOF-MS-MS. *Chin. J. Exp. Tradit. Med. Formulae.* **2011**, *17*, 64–68.
35. Wang, Q.; Lu, Z.W.; Liu, Y.H.; Wang, M.L.; Fu, S.; Zhang, Q.Q.; Zhao, H.Z.; Zhang, Z.X.; Xie, Z.Y.; Huang, Z.H.; Yu, H.H.; Zhou, W.J.; Gao, X.Y. Rapid analysis on phenolic compounds in *Rheum palmatum* based on UPLC-Q-TOF/MS<sup>E</sup> combined with diagnostic ions filter. *China J. Chin. Mater. Med.* **2017**, *42*, 1922–1931.
36. Nomura, T.; Aida, M.; Yamaguchi, N.; Hano, Y. Artonols A, B, C, D, and E, Five New Isoprenylated Phenols from the Bark of *Artocarpus communis* Forst. *Heterocycles.* **1997**, *45*, 163–175.
37. Ranganathan, K.R.; Seshadri, T.R. A new flavono-lignan from *hydnocarpus wightiana*. *Tetrahedron Lett.* **1973**, *14*, 3481–3482.
38. Li, Y.; Wu, Q.; Li, Q.; Li, X.; Dong, Z.j. Quick identification and analysis of chemical constituents in *silymarin* capsules by UPLC-QTOF/MS. *Chin. J. Hosp. Pharm.* **2017**, *37*, 2259–2265.
39. Zhao, T.T. Studies on the correlation between efficacies and active ingredients in the same origin herbal raw materials, *Mori Ramulus* and *Mori Cortex*. Ph.D. Thesis, Shanxi Med University, Shanxi, China, 2017.
40. Jing, L.; Feng, X.; Zhang, Y.Z.; Huang, S.; Zang, X.Y.; Zhao, X.; Lei, Z.; Shang, M.Y.; Yang, D.H.; Xuan, W. The profiling and identification of the absorbed constituents and metabolites of *Paeoniae Radix Rubra* decoction in rat plasma and urine by the HPLC-DAD-ESI-IT-TOF-MS(n) technique: A novel strategy for the systematic screening and identification of absorbed. *J. Pharm. Biomed. Anal.* **2013**, *83*, 108–121.
41. Yang, D.X.; Chen, X.J.; Hu, Q.J.; Yang, J.Y.; Xiao, B.K.; Huang, Q.R. LC-MS method for determination of 5 kinds of polyphenols in grape seed extract. *Chin. J. Pharm. Anal.* **2016**, *36*, 1330–1337.
42. Gao, N.Q.; Cao, Y.H.; Tao, G.J. HPLC-MS analysis of *cynomorium songaricum* rupr. *Mod. Chem. Ind.* **2010**, *30*, 91–93.

43. Ren, Q.L.; Wei, G.H.; Jin, M.C.; Su, B.G.; Huang, M. Determination of oligomeric proanthocyanidins in grape seeds by RP-HPLC/ESI-MS. *Food Ferment. Ind.* **2006**, *32*, 79.
44. Zhang, X.N.; Su, M.S.; Du, J.H.; Zhou, H.J.; Li, X.W.; Li, X.; Ye, Z.W. Comparison of Phytochemical Differences of the Pulp of Different Peach [*Prunus persica* (L.) Batsch] Cultivars with Alpha-Glucosidase Inhibitory Activity Variations in China Using UPLC-Q-TOF/MS. *Molecules* **2019**, *24*, 1968–1982.
45. Fabre, N.; Rustan, I.; Hoffmann, E.D.; Quetin-Leclercq, J. Determination of flavone, flavonol, and flavanone aglycones by negative ion liquid chromatography electrospray ion trap mass spectrometry. *J. Am. Soc. Mass Spectrom.* **2001**, *12*, 707–715.
46. Yang, Y.X.; Liao, S.G.; Wang, Z.; Li, Y.J.; Liang, Y.; Hao, X.Y.; Wang, Y.L. Analysis of water-soluble chemical constituents of Indigoferae Stachyoidis Radix by UHPLC-DAD-Q-TOF-MS/MS. *Chin. J. Exp. Tradit. Med. Formulae* **2014**, *20*, 63–67.
47. Wang, T.S.; He, C.G.; Wen, Q.H.; Liu, P.M.; Yang, M. Fragmentation study of benzoic acid type small aromatic molecules by ESI-MS<sup>n</sup>. *J. Hainan Norm. Univ. Nat. Sci.* **2020**, *33*, 36–43.
48. Li, C.M.; An, Y.T.; Wang, T.; Shang, H.H.; Gao, X.M.; Zhang, Y. Isolation and identification of chemical constituents from the flowers of *Abelmoschus manihot* (L.) Medic(III). *J. Shenyang Pharm. Univ.* **2011**, *28*, 520–525.
49. Wang, Y.L.; Zhang, C.; Zhang, F.; Huang, J.; Wang, D.D.; Zhao, Y.F.; Liu, W.; Ge, G.B.; Xu, J.G. Chemical profile and tissue distribution study of Jingyin granules in rats using UHPLC-Q-Exactive Orbitrap HR-MS. *China J. Chin. Mater. Med.* **2020**, *45*, 5537–5554.
50. Meng, X.W.; Cai, D.J.; Zhu, Q.; Zhang, H.G.; Wang, M.F.; Liu, Y.; Tang, R.F.; Shao, F.; Chen, L.Y.; Liu, R.H. Rapid identification and analysis of chemical components in heartwood of *Dalbergia cochinchinensis* by UPLC-Q-TOF-MS/MS. *Chin. J. Exp. Tradit. Med. Formulae* **2020**, *26*, 143–156.
51. Jin, J.Z.; Shen, T.C.; Xu, H.Y.; Zhou, Z.Q. Extraction and identification of dihydroquercetin from Larch Wood. *J. Zhejiang. For. Sci. Tech.* **2004**, *24*, 16–18.
52. Wang, Y.Q.; Li, S.J.; Zhuang, G. The analysis of serum pharmacology of *Bidens bipinnata* L. based on HPLC-Q-TOF/MS. *Chin. Tradit. Pat. Med.* **2020**, *42*, 3074–3078.
53. Kilic, A.; Kollmannsberger, H.; Nitz, S. Glycosidically bound volatiles and flavor precursors in *Laurus nobilis*. *J. Agr. Food Chem.* **2005**, *53*, 2231.
54. Shu, P.; Hong, J.L.; Wu, G.; Yu, B.Y.; Qin, M.J. Analysis of flavonoids and phenolic acids in *Iris tectorum* by HPLC-DAD-ESI-MS<sup>n</sup>. *Chin. J. Nat. Med.* **2010**, *8*, 202–207.
55. Kang, Y.; Mao, Y.N.; Wang, F.F.; Wu, W.Q.; Liu, Y. Analysis of chemical components in leaves of *Hippophae rhamnoides* by UPLC-LTQ Orbitrap MS. *Mod. Chin. Med.* **2018**, *20*, 1340–1346+1366.
56. Li, W.; Feng, Y.L.; Li, T.E.; Wu, H.; Li, Y.; Zhong, G.Y.; Wu, B.; He, M.Z. Rapid analysis on flavonoids in *Glechoma longituba* (Nalai) Kupr by UPLC-Q-TOF/MS couple with diagnostic ions. *J. Chin. Mass Spectrom. Soc.* **2016**, *37*, 504–516.
57. Li, X. Quantum chemistry study on ESI-ITMS<sup>n</sup> cleavage regularity of flavonol compounds. Ph.D. Thesis, Jiamusi University, Heilongjiang, China, 2015.
58. Yong, P.; Liu, Y.; Lv, L.Y.; Zhang, Z.F.; Luo, H.; Zeng, R. Rapid identification on chemical compounds in roots of *Rheum nobile* based on UPLC-ESI-HRMS<sup>n</sup>. *Chin. Tradit. Herb. Drugs* **2019**, *50*, 1066–1074.
59. Liu, G.Q.; Dong, J.; Wang, H.; Wan, L.R.; Duan, Y.S.; Chen, S.Z. ESI fragmentation studies of four tea catechins. *Chem. J. Chin. Univ.* **2009**, *30*, 1566–1570.
60. KeYiMu, A. Study on the mass spectrometric analytical method of flavonoid glycosides. Ph.D. Thesis, Peking Union Medical College, Beijing, China, 2006.
61. Wang, Y.; Gu, W.T.; Ding, Z.H.; Chen, S.Q.; Xiao, S.Y.; Yu, Y.H.; Du, B.F.; Song, Y.T. Identification and analysis of quercetin and its glycosides in *Rosa roxburghii* by Ultra High Performance Liquid Chromatograph-Tandem High Resolution Mass Spectrometry. *Chin. J. Anal. Chem.* **2020**, *48*, 955–961.
62. Zuo, L.H.; Zhou, L.; Li, Z.L.; Wang, Z.H.; Shi, Y.Y.; Jiang, X.F.; Li, X.; Sun, Z.; Zhang, X.J. Study on chemical constituents of Tiandan Tongluo Capsule based on UPLC-Q-Orbitrap HRMS. *Chin. Tradit. Herb. Drugs* **2018**, *49*, 1031–1040.
63. Li, Z.H.; Wei, Y.; Fan, Y.; Zhu, J.; Zhao, T.Z. Analysis of rutin by electrospray ion trap mass spectrometry. *Chin. J. Anal. Lab.* **2015**, *34*, 186–189.
64. Cheng, R.S. Analysis of the basis of pharmacodynamics of mulberry herbs (*Mori Folium*, *Mori Ramulus*, *Mori Cortex*, *Mori Fructus*). Ph.D. Thesis, Jiangsu University, Jiangsu, China, 2019.
65. Xu, W.; Fu, Z.Q.; Lin, J.; Huang, X.C.; Chen, D.; Yu, H.M.; Fan, S.M. Qualitative and quantitative analysis of major constituents in *Tetrastigma hemsleyanum* by HPLC-Q-TOF-MS and UPLC-QqQ-MS. *China J. Chin. Mater. Med.* **2014**, *39*, 4365–4372.
66. Li, R.R.; Zhao, D.; Li, M.M.; Shu, S.N.; Wang, P.Y.; Li, H.R.; Feng, S.X. Study on the metabolites of *Bulbus Fritillariae Thunbergii* and *Pericarpium Citri Reticulatae* in rats based on HPLC-Q Exactive-Orbitrap high-resolution mass spectrometry. *Chin. J. Pharm. Anal.* **2020**, *40*, 1413–1424.
67. Zhao, X.S.; Yang, M.H.; Wu, H.F.; Shu, X.Y. Fragmentation behaviour for Iridoid glucosides and anthraquinones in *Morinda officinalis* by ESI-Q-TOF-MS/MS in negative mode. *J. Chin. Mass Spectrom.* **2018**, *39*, 342–350.
68. Shao, B.; Xiong, Y.X.; Xie, B.; Chen, F.; Zhu, Y.Y.; Yuan, E.; Li, Y.G. Analysis of chemical components of *Sarcandrae Herba* based on UPLC-Q-TOF-MS. *Chin. J. Pharm. Anal.* **2021**, *41*, 1054–1063.
69. Xie, J.; Zhang, L.; Zeng, J.X.; Li, M.; Wang, J.; Xie, X.X.; Zhong, G.Y.; Luo, G.M.; Yuan, J.B.; Liang, J. Fast identification of constituents of *Logotis brevituba* by using UPLC-Q-TOF-MS/MS method. *China J. Chin. Mater. Med.* **2017**, *42*, 2123–2130.



70. Zhao, X.M.; Cheng, Y.X.; Liang, C.X.; Guo, J.; Liu, X.Q.; Feng, W.H.; Zhao, Z.B.; Yan, L.H.; Wang, Z.M. Analysis of chemical constituents in *Euodiae fructus* by UPLC-Q-TOF-MS/MS. *Chin. J. Exp. Tradit. Med. Formulae* **2021**, *27*, 113–126.
71. Long, H.P.; Li, X.; Wang, T.T.; Wei, J.Y.; Li, D.F.; Zhang, Y.; Tang, C.Y.; Tang, D.F.; Wu, H.W.; Yang, H.J. Study on chemical constituents from Xiaer Fupi Granules based on UPLC-LTQ-Orbitrap-MS. *Chin. Tradit. Herb. Drugs* **2018**, *49*, 5522–5531.
72. Dong, J.; Wang, H.; Wan, L.R.; Duan, Y.S.; Chen, S.Z. Study on the fragmentation of EGC/GC and EGCG/GCG using ESI-IT-TOF. *J. Chin. Mass Spectrom.* **2009**, *30*, 287–294.
73. Qin, Z.X.; Zhang, Y.; Qi, M.D.; Zhang, Q.; Liu, S.; Li, Y.H.; Liu, Y.G.; Liu, H. Rapid analysis of compounds in leaves of Chinese seabuckthorn and Tibetan seabuckthorn by UPLC/Q-TOF-MS. *China J. Chin. Mater. Med.* **2016**, *41*, 1461–1468.
74. Li, L.Y.; Wang, Y.; Liu, M.J.; Zhang, X.; Li, X.Q.; Dai, Y.J.; Ma, Y.L.; Zhang, C. Analysis of chemical components in Zhizi Jinhua Wan by UPLC-Q-TOF-MS/MS. *Chin. J. Exp. Tradit. Med. Formulae* **2017**, *23*, 1–11.
75. Du, C.S.; Wu, L.Q.; Li, J.G.; Ma, H.Y. Rapid analysis of chemical components in *Flos Chrysanthemi* by UPLC-Q-TOF-MS. *J. Chin. Med. Mat.* **2017**, *40*, 621–623.
76. Yi, T.; Zhao, Z.X.; Liu, M.Y. Analysis of the chemical constituents of Flavonoids in Corn Stigma by UPLC-Q-TOF-MS. *Chin Pharm.* **2019**, *22*, 1776–1780.