

AUSTRALIAN MUSEUM SCIENTIFIC PUBLICATIONS

Jones, D. S., J. T. Anderson and D. T. Anderson, 1990. Checklist of the Australian Cirripedia. *Technical Reports of the Australian Museum* 3: 1–38. [24 August 1990].

doi:10.3853/j.1031-8062.3.1990.76

ISSN 1031-8062

Published by the Australian Museum, Sydney

nature culture **discover**

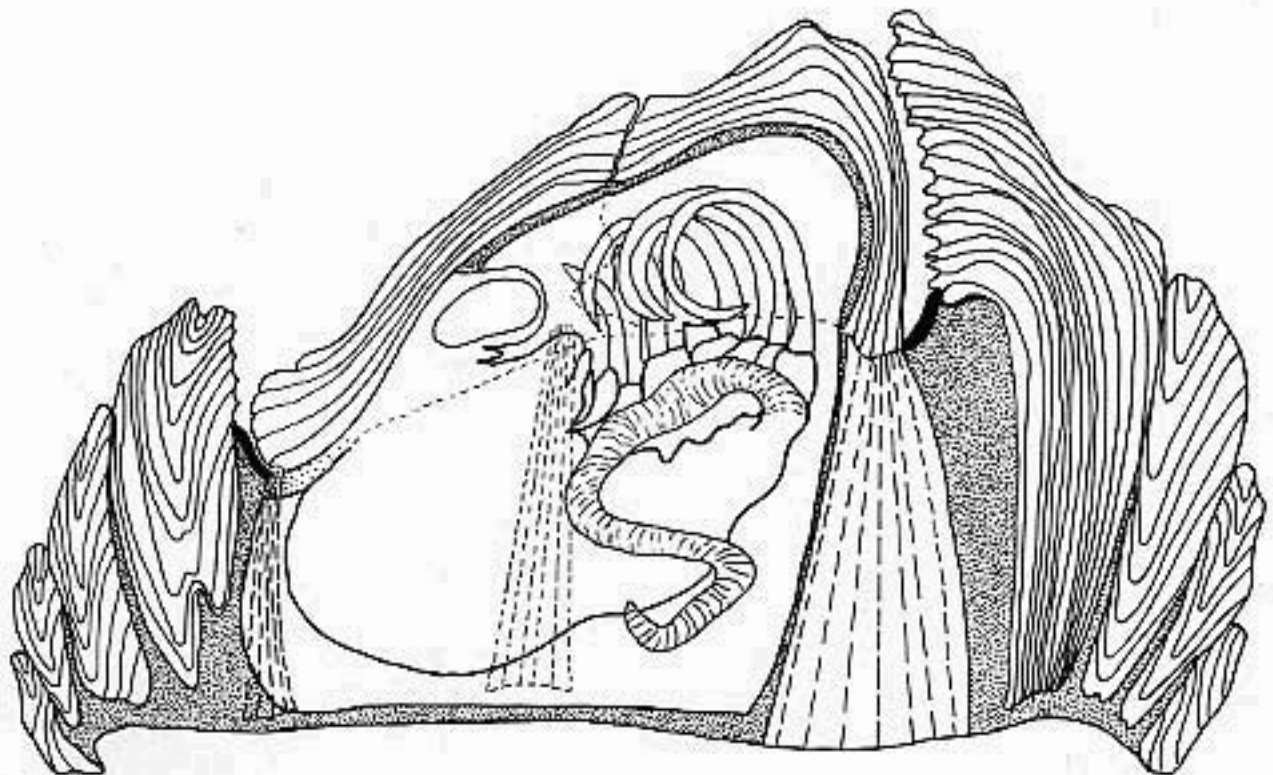
Australian Museum science is freely accessible online at
www.australianmuseum.net.au/publications/
6 College Street, Sydney NSW 2010, Australia



ISSN 1031-8062
ISBN 0 7305 7938 7

Checklist of the Australian Cirripedia

D.S. Jones, J.T. Anderson & D.T. Anderson



**Technical Reports of the Australian Museum
Number 3**

TECHNICAL REPORTS OF THE AUSTRALIAN MUSEUM

Director:

D.J.G. Griffin

Editor:

J.K. Lowry

Assistant Editor:

J.E. Gates

Associate Editors:

Anthropology:

J.R. Specht

Invertebrates:

W.B. Rudman

Geology:

F.L. Sutherland

Vertebrates:

A.E. Greer

© Copyright Australian Museum, 1990

No part of this publication may be reproduced without permission of the Editor.

Produced by the Australian Museum

24 August 1990

\$10.00 bought at the Australian Museum

\$12.50 posted within Australia or New Zealand

\$18.00 posted airmail to other countries

Technical Reports of the Australian Museum is a series of occasional papers which publishes bibliographies, catalogues, surveys, and data bases in the fields of anthropology, geology and zoology. The journal is an adjunct to *Records of the Australian Museum* and the *Supplement* series which publish original research in natural history. It is designed for the quick dissemination of information at a moderate cost. The information is relevant to Australia, the South-west Pacific and the Indian Ocean area. Submitted manuscripts are reviewed by external referees. A reasonable number of copies are distributed to scholarly institutions in Australian and around the world.

Submitted manuscripts should be addressed to the Editor, Australian Museum, P.O. Box A285, Sydney South, N.S.W. 2000, Australia. Manuscripts should preferably be on 3 or 5 inch diskettes in DOS format and should include an original and two copies.

Technical Reports are not available through subscription. New issues will be announced in the *Records*. Orders should be addressed to the Assistant Editor (Community Relations), Australian Museum, P.O. Box A285, Sydney South, N.S.W. 2000, Australia.

Cover illustration: A vertical section through the barnacle *Catomerus*

By Don Anderson

Checklist of the Australian Cirripedia

D.S. JONES¹, J.T. ANDERSON² & D.T. ANDERSON²

¹Department of Aquatic Invertebrates, Western Australian Museum,
Francis Street, Perth, WA 6000, Australia

²School of Biological Sciences, University of Sydney,
Sydney, NSW 2006, Australia

ABSTRACT. The occurrence and distribution of thoracican and acrothoracican barnacles in Australian waters are listed for the first time since Darwin (1854). The list comprises 204 species. Depth data and museum collection data (for Australian museums) are given for each species. Geographical occurrence is also listed by area and depth (littoral, neuston, sublittoral or deep). Australian contributions to the biology of Australian cirripedes are summarised in an appendix. All listings are indexed by genus and species.

JONES, D.S., J.T. ANDERSON & D.T. ANDERSON, 1990. Checklist of the Australian Cirripedia. Technical Reports of the Australian Museum No. 3: 1-38.

Darwin (1851, 1854) included a number of cirripedes from Australian waters in his comprehensive survey of the group. The second volume of Darwin's monograph (1854:171) contains a list of species characteristic of the Australian region, notable for its brevity but at the same time for its large endemic content. If one adds to this list the species of *Lepas* recognised by Darwin in Australian seas as part of their world distribution, the cirripede fauna known for Australia in 1854 comprised 28 species as listed in Table 1.

Darwin's list included many of the common and characteristic cirripedes of Australian shores, but only a few sublittoral species.

The general perception of the Australian barnacle fauna by non-specialists has changed little since Darwin's time. W.J. Dakin's "Australian Seashores", for example, in the revised edition by I. Bennett (1987), adds only *Lepas fascicularis* and *Balanus variegatus* as components of the known shore and drift fauna, an

insignificant change. The Fauna of Australia, Volume 1A (Dyne & Walton, 1987) categorises cirripedes in Australia merely as "...known to be present...". The reason for this limited recognition is plain. Darwin's monograph remains the only published listing of Australian cirripedes. The well-known Australian student of cirripedes, Elizabeth C. Pope, made extensive collections from all parts of the continent during the nineteen forties, fifties and sixties. The records and specimens from these collections are housed in the Australian Museum, Sydney, where Miss Pope was the Curator of Crustacea. Although Miss Pope published in detail mainly on the chthamaloids (Pope, 1965), we have in our possession her unpublished checklist of Australian cirripedes, assembled during the 1960's, in which she named 61 species, including the 28 listed by Darwin. In a century of investigation, therefore, 33 more species of barnacles had been added to the Australian fauna list, but only expert cirripedologists were aware of it. Foster

Table 1. Australian cirripedes listed by Darwin (1854).

Current name	Darwin's name (where different)	Current name	Darwin's name (where different)
<i>Lithotrya nicobarica</i>	<i>Lithotrya cauta</i>	<i>Epopella simplex</i>	<i>Elminius simplex</i>
<i>Smilium peronii</i>	<i>Scalpellum peronii</i>	<i>Tetraclitella purpurascens</i>	<i>Tetraclita purpurascens</i>
<i>Ibla quadrivalvis</i>		<i>Tesseropora rosea</i>	<i>Tetraclita rosea</i>
<i>Lepas anatifera</i>		<i>Tetraclita squamosa</i>	<i>Tetraclita porosa</i>
<i>Lepas anserifera</i>		<i>Tetraclita vitata</i>	
<i>Lepas australis</i>		<i>Armatobalanus allium</i>	<i>Balanus allium</i>
<i>Lepas hillii</i>		<i>Chirona amaryllis</i>	<i>Balanus amaryllis</i>
<i>Lepas pectinata</i>		<i>Acasta glans</i>	
<i>Conchoderma auritum</i>		<i>Acasta sulcata</i>	
<i>Catomerus polymerus</i>	<i>Catophragmus polymerus</i>	<i>Elminius modestus</i>	
<i>Pachylasma aurantiacum</i>		<i>Balanus amphitrite</i>	
<i>Chthamalus antennatus</i>		<i>Balanus trigonus</i>	
<i>Chamaesipho tasmanica</i>	<i>Chamaesipho columna</i>	<i>Austromegabalanus nigrescens</i>	<i>Balanus nigrescens</i>
<i>Austrobalanus imperator</i>	<i>Balanus imperator</i>	<i>Megabalanus tintinnabulum</i>	<i>Balanus tintinnabulum</i>

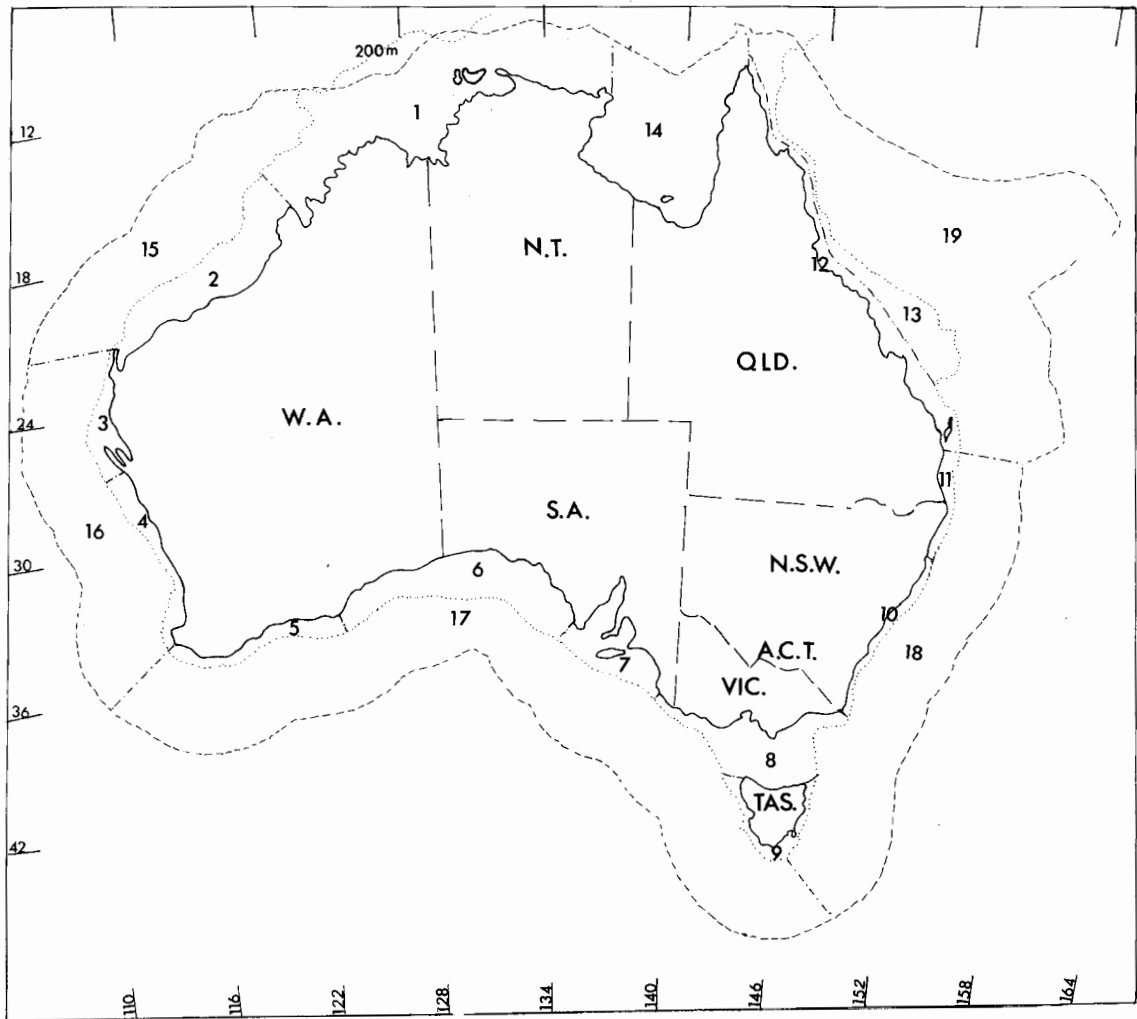


Fig.1. Geographical subdivisions for the currently known distribution of each species in Australian waters, based on areas defined by the Bureau of Fauna and Flora, Canberra, ACT for the Zoological Catalogue of Australia.

(1978) mentioned the Australian occurrence of several of these additional species in his review of the New Zealand barnacle fauna, but appropriately did not assemble an Australian faunal list. Zevina (1981a, 1982) and Newman & Ross (1976) included many Australian locality records in their comprehensive surveys of the lepadomorph and balanomorph species of the world, but neither work is easily accessible to the non-specialist.

Our own work on this topic has been developed over the last ten years (1978-1988), initially as independent investigations by D.S. Jones in Western Australia and D.T. and J.T. Anderson in eastern and northern Australia. Through our individual and, more recently, collaborative efforts, together with the cooperation of collectors and Museums throughout the country, we have been able to assemble a list of 204 species of cirripedes in Australian waters, covering the littoral, shelf and slope faunas around the continent. Almost none of the species are new to science, but many of them are recorded from Australian waters for the first time.

In assembling this checklist, we have used the classification and sequence of Zevina (1981a, 1982) for the Lepadomorpha and the classification and sequence of Newman & Ross (1976) for the Balanomorpha. Acrothoracicans are classified following the work of Tomlinson (1969). The currently known distribution of each species in Australian waters is given in terms of the geographical subdivisions shown in Figure 1, based on areas defined by the Bureau of Fauna and Flora, Canberra, ACT for the Zoological Catalogue of Australia. Coastal areas within the 200 m bathymetric contour are numbered 1-14 anticlockwise, beginning with the north coast. Adjacent areas of deeper water, delimited marginally by the boundary of the 200 nautical mile Australian fishing zone, are numbered 15-19 anticlockwise, beginning with the North West oceanic area. The Australian marine biogeographical areas and their designations are (for explanation of abbreviations used here see Geographical Occurrence of Australian Cirripede Species): 1 - N coast; 2 - NW coast; 3 - Central W coast; 4 - Lower W coast; 5 - SW coast; 6 - Great Australian Bight; 7 - S Gulfs coast; 8 - Bass Strait; 9 - Tasmanian coast; 10 - Lower E coast; 11 - Central E coast; 12 - NE coast; 13 - Great Barrier Reef; 14 - Gulf of Carpentaria; 15 - NW oceanic; 16 - W oceanic; 17 - S oceanic; 18 - SE oceanic; 19 - NE oceanic. Lists of the species known to occur in each area are presented after the main Checklist.

Many of the species in the Checklist have distributions beyond Australian waters. These broader geographical occurrences were indicated by Zevina (1981a, 1982) for lepadomorph species and Newman & Ross (1976) for balanomorphs and are not included in the present work. The name of each species is accompanied by a reference to the synonymy of the species and by one or more references to papers in which a diagnosis of the species has been published. No attempt has been made to include comprehensive lists of references to work on the species. For the most part, these are available in the papers of Zevina and of Newman & Ross, cited above. Only a few of the 204 species in the Checklist have

been the subject of publications by Australian marine zoologists. These papers, and the species to which they pertain, are listed in Appendix A.

The depth at which each species has been found is given either as a depth range in metres, or in terms of littoral distribution or occasionally sublittoral distribution (less than 10 m but not precisely recorded). For epizoic species, a general indication is given of the types of host occupied by the species.

The museum locations of specimens in public collections are indicated for each species. Abbreviations of museum locations of specimens are: AM - Australian Museum; MV - Museum of Victoria; QM - Queensland Museum; SAM - South Australian Museum; WAM - Western Australian Museum. If museum references are not cited, this indicates a literature record and no material exists in Australian museums. The majority of specimens for these records occur in European museums.

Checklist of the Australian Cirripede Fauna

(The species included in an unpublished list of E.C. Pope are marked with an asterisk)

Order THORACICA Darwin, 1854

Suborder LEPADOMORPHA Pilsbry, 1916

Family Scalpellidae Pilsbry, 1916

Subfamily Lithotryinae Gruvel, 1905

Lithotrya Sowerby, 1822

Lithotrya dorsalis (Ellis, 1786)

Synonymy: Ellis, 1786: pl.15 fig.4; Zevina, 1981a: 46
 Diagnosis: Darwin, 1851: 351
 Collection: AM, WAM
 Distribution: 1, 2
 Depth: Sublittoral

Lithotrya nicobarica Reinhardt, 1850

Synonymy: Reinhardt, 1859: 1; Zevina, 1981a: 45
 Diagnosis: Darwin, 1851: 359; Sewell, 1926: 269
 Collection: AM
 Distribution: 2, 13
 Depth: Sublittoral - 25 m

**Lithotrya valentiana* (Gray, 1825)

Synonymy: Gray, 1825: 102; Zevina, 1981a: 47
 Diagnosis: Darwin, 1851: 371; Cannon, 1935: 1
 Collection: AM, WAM
 Distribution: 1, 2, 13
 Depth: Littoral - sublittoral

Subfamily Calanticinae Zevina, 1978

Calantica Gray, 1825

Calantica studeri (Weltner, 1922)

Synonymy: Weltner, 1922: 100; Zevina, 1981a: 65
 Diagnosis: Weltner, 1922: 100
 Distribution: 3
 Depth: 60 - 248 m

Smilium Gray, 1825

**Smilium peronii* Gray, 1825

Synonymy: Gray, 1825: 100; Zevina, 1981a: 73
 Diagnosis: Darwin, 1851: 264; Krüger, 1914: 431
 Collection: AM, MV, WAM
 Distribution: 4, 5, 8, 9, 10, 11
 Depth: 0 - 135 m

Smilium sinense (Annandale, 1910b)

Synonymy: Annandale, 1910b: 211; Zevina, 1981a: 83
 Diagnosis: Annandale, 1910b: 211; Annandale, 1914: 274
 Collection: MV
 Distribution: 8
 Depth: 92 - 857 m

Subfamily Scalpellinae Pilsbry, 1907b

Scalpellum Leach, 1817

Scalpellum stearnsi Pilsbry, 1890

Synonymy: Pilsbry, 1890: 441; Zevina, 1981a: 98
 Diagnosis: Pilsbry, 1890: 441; Nilsson-Cantell, 1921: 175
 Collection: AM, WAM
 Distribution: 1, 2, 15
 Depth: 11 - 2117 m

Subfamily Meroscalpellinae Zevina, 1978b

Litoscalpellum Newman & Ross, 1971

Litoscalpellum giganteum (Gruvel, 1902b)

Synonymy: Gruvel, 1902b: 153; Zevina, 1981a: 137
 Diagnosis: Gruvel, 1902b: 153
 Collection: AM, MV
 Distribution: 18
 Depth: 406 - 1100 m

Litoscalpellum intermedium (Hoek, 1883)

Synonymy: Hoek, 1883: 70; Zevina, 1981a: 120
 Diagnosis: Hoek, 1883: 70; Nilsson-Cantell, 1921: 208
 Distribution: 18
 Depth: 740 - 1275 m

Litoscalpellum juddi (Calman, 1918)

Synonymy: Calman, 1918: 116; Zevina, 1981a: 135
 Diagnosis: Calman, 1918: 116
 Collection: AM, WAM
 Distribution: 1, 15
 Depth: 455 - 2743 m

Litoscalpellum nipponense (Pilsbry, 1907b)

Synonymy: Pilsbry, 1907b: 73; Zevina, 1981a: 123
 Diagnosis: Pilsbry, 1907b: 73; Hiro, 1933: 25
 Distribution: 15, 17
 Depth: 150 - 824 m

Alcockianum Zevina, 1978b

Alcockianum alcockianum (Annandale, 1906a)

Synonymy: Annandale, 1906a: 392; Zevina, 1981a: 149
 Diagnosis: Annandale, 1906a: 392; Nilsson-Cantell, 1928: 6
 Collection: AM, QM
 Distribution: 19
 Depth: 1280 - 1800 m

Annandaleum Newman & Ross, 1971

Annandaleum lambda (Annandale, 1910a)

Synonymy: Annandale, 1910a: 115; Zevina, 1981a: 168
 Diagnosis: Annandale, 1910a: 115
 Collection: QM
 Distribution: 19
 Depth: 237 - 1960 m

Subfamily Arcoscalpellinae Zevina 1978b

Planoscalpellum Zevina, 1978b

Planoscalpellum planum (Hoek, 1883)

Synonymy: Hoek, 1883: 116; Zevina, 1981a: 185
 Diagnosis: Hoek, 1883: 116
 Collection: MV
 Distribution: 18
 Depth: 421 - 4755 m

*Verum Zevina, 1978b**Verum australicum* (Hoek, 1883)

Synonymy: Hoek, 1883: 118; Zevina, 1981a: 223
 Diagnosis: Hoek, 1883: 118
 Collection: QM
 Distribution: 19
 Depth: 463 - 2561 m

Verum candidum (Hoek, 1907)

Synonymy: Hoek, 1907: 119; Zevina, 1981a: 233
 Diagnosis: Hoek, 1907: 119
 Distribution: 17
 Depth: 204 - 310 m

Verum novaezelandiae (Hoek, 1883)

Synonymy: Hoek, 1883: 124; Zevina, 1981a: 228
 Diagnosis: Hoek, 1883: 124
 Distribution: 18
 Depth: 882 - 4850 m

Verum virgatum (Hoek, 1907)

Synonymy: Hoek, 1907: 120; Zevina, 1981a: 226
 Diagnosis: Hoek, 1907: 120
 Distribution: 1
 Depth: 1600 - 3030 m

*Anguloscalpellum Zevina, 1978b**Anguloscalpellum pedunculatum* (Hoek, 1883)

Synonymy: Hoek, 1883: 99; Zevina, 1981a: 266
 Diagnosis: Hoek, 1883: 99
 Collection: AM, QM
 Distribution: 12, 19
 Depth: 202 - 478 m

*Amigoscalpellum Zevina, 1978b**Amigoscalpellum costellatum* (Withers, 1935)

Synonymy: Withers, 1935: 279; Zevina, 1981a: 270
 Diagnosis: Hoek, 1883: 93
 Distribution: 18
 Depth: 110 - 2397 m

Amigoscalpellum daschae Zevina, 1981b

Synonymy: Zevina, 1981b: 87
 Diagnosis: Zevina, 1981b: 87
 Collection: QM
 Distribution: 19
 Depth: 1517 - 3080 m

Amigoscalpellum elegans (Hoek), 1907: 107

Synonymy: Zevina, 1981a: 268
 Diagnosis: Hoek, 1907: 107
 Collection: QM
 Distribution: 19
 Depth: 687 - 1886 m

*Trianguloscalpellum Zevina, 1978b**Trianguloscalpellum hirsutum* (Hoek, 1883)

Synonymy: Hoek, 1883: 88; Zevina, 1981a: 309
 Diagnosis: Hoek, 1883: 88
 Collection: QM
 Distribution: 19
 Depth: 390 - 6135 m

Trianguloscalpellum regium regium (Thomson, 1877)

Synonymy: Thomson, 1877: 4; Zevina, 1981a: 309
 Diagnosis: Hoek, 1883: 106
 Distribution: 17, 18
 Depth: 1507 - 6135 m

Arcoscalpellum Hoek, 1907*Arcoscalpellum dubium* (Hoek, 1883)

Synonymy: Hoek, 1883: 125; Zevina, 1981a: 348
 Diagnosis: Hoek, 1883: 125
 Distribution: 19
 Depth: 2520 - 2561 m

Arcoscalpellum gryllum Zevina, 1981b

Synonymy: Zevina, 1981b: 77
 Diagnosis: Zevina, 1981b: 77
 Distribution: 18
 Depth: 4850 m

Arcoscalpellum inum Zevina, 1981b

Synonymy: Zevina, 1981b: 80
 Diagnosis: Zevina, 1981b: 80
 Distribution: 17
 Depth: 1100 m

Arcoscalpellum michelottianum (Seguenza, 1876)

Synonymy: Seguenza, 1876: 381; Zevina, 1981a: 343
 Diagnosis: Hoek, 1883: 96; Newman & Ross, 1971: 71
 Collection: QM
 Distribution: 15, 19
 Depth: 64 - 5190 m

Arcoscalpellum moluccanum (Hoek, 1883)

Synonymy: Hoek, 1883: 104; Nilsson-Cantell, 1927: 747
 Diagnosis: Hoek, 1883: 104
 Collection: QM
 Distribution: 19
 Depth: 904 - 2743 m

Arcoscalpellum pertosum Foster, 1978

Synonymy: Foster, 1978: 63
 Diagnosis: Foster, 1978: 63
 Collection: MV
 Distribution: 8
 Depth: 380 - 1402 m

Arcoscalpellum truncatum (Hoek, 1883)

Synonymy: Hoek, 1883: 92; Zevina, 1981a: 334
 Diagnosis: Hoek, 1883: 92
 Distribution: 19
 Depth: 1561 - 4162 m

Family Heteralepadidae Nilsson-Cantell, 1921

Heteralepas Pilsbry, 1907b

Heteralepas adiposa Zevina, 1982

Synonymy: Zevina, 1982: 120
 Diagnosis: Zevina, 1982: 120
 Collection: AM
 Distribution: 11
 Depth: 400 m

Heteralepas cornuta (Darwin, 1881)

Synonymy: Darwin, 1881: 165; Ross, 1975: 18
 Diagnosis: Darwin, 1881: 165
 Collection: AM
 Distribution: 11
 Depth: 90 - 4315 m

Heteralepas dubia Broch, 1922

Synonymy: Broch, 1922: 288
 Diagnosis: Broch, 1922: 288
 Collection: AM
 Distribution: 10
 Depth: 100 m, Epizoic (*Leptomithrax waitei*)

Heteralepas japonica (Aurivillius, 1894)

Synonymy: Aurivillius, 1894: 125; Hiro, 1933: 48
 Diagnosis: Aurivillius, 1894: 28; Nilsson-Cantell, 1927: 755
 Collection: AM, WAM
 Distribution: 1, 2, 10, 11
 Depth: 5 - 2090 m

Heteralepas utinomii Newman, 1960

Synonymy: Newman, 1960: 110
 Diagnosis: Newman, 1960: 110
 Distribution: 18
 Depth: 450 m

Paralepas Pilsbry, 1907b

**Paralepas dannevigii* (Broch, 1922)

Synonymy: Broch, 1922: 282
 Diagnosis: Broch, 1922: 282
 Collection: AM
 Distribution: 8, 18
 Depth: 273 - 476 m

Paralepas georgei Daniel, 1970

Synonymy: Daniel, 1970: 33; D. Jones, 1987; D. Jones, 1990
 Diagnosis: Daniel, 1970: 33
 Collection: WAM
 Distribution: 4, 6, 8
 Depth: 40 - 80 m

**Paralepas intermedia* (Hoek, 1907)

Synonymy: Hoek, 1907: 37
 Diagnosis: Hoek, 1907: 37
 Collection: AM
 Distribution: 18
 Depth: 90 - 462 m

Paralepas minuta (Phillipi, 1836)

Synonymy: Phillipi, 1836: pl.12 fig.23; Hiro, 1933: 51
 Diagnosis: Darwin, 1881: 160; Hiro, 1939c: 205
 Collection: AM
 Distribution: 10
 Depth: 82 - 736 m

Paralepas morula (Hoek, 1907)

Synonymy: Hoek, 1907: 35
 Diagnosis: Hoek, 1907: 35
 Distribution: 18
 Depth: 182 - 538 m

Paralepas palinura urea Newman, 1960

Synonymy: Newman, 1960: 112
 Diagnosis: Newman, 1960: 112
 Collection: AM
 Distribution: 10
 Depth: Sublittoral epizoic (*Jasus novaehollandiae*)

Paralepas pedunculata (Hoek, 1883)

Synonymy: Hoek, 1883: 57; Krüger, 1911a: 34
 Diagnosis: Hoek, 1883: 57; Krüger, 1911a: 34
 Collection: QM
 Distribution: 10, 19
 Depth: 135 - 750 m

Paralepas quadrata (Aurivillius, 1894)

Synonymy: Aurivillius, 1894: 30; Foster, 1978: 17
 Diagnosis: Aurivillius, 1894: 30; Krüger, 1911a: 30
 Collection: AM, WAM
 Distribution: 4, 10
 Depth: 0 - 150 m

Paralepas scyllarusi Utinomi, 1967a

Synonymy: Utinomi, 1967a: 117
 Diagnosis: Utinomi, 1967a: 117
 Collection: AM
 Distribution: 11, 12
 Depth: Low intertidal

Paralepas tuberosa (Nilsson-Cantell, 1932)

Synonymy: Nilsson-Cantell, 1932: 3
 Diagnosis: Nilsson-Cantell, 1932: 3
 Collection: AM
 Distribution: 11
 Depth: 60m

Family Iblidae Leach, 1825

Ibla Leach, 1825**Ibla cumingi* Darwin, 1851

Synonymy: Darwin, 1851: 183; Annandale, 1911: 229;
 Newman, 1960: 100
 Diagnosis: Darwin, 1851: 183; Hoek, 1907: 48; Hiro,
 1937b: 393
 Collection: AM, WAM
 Distribution: 1, 2, 12, 13
 Depth: Littoral

Ibla idiotica Batham, 1945

Synonymy: Batham, 1945: 347; Foster, 1978: 21
 Diagnosis: Batham, 1945: 347
 Collection: MV
 Distribution: 8
 Depth: Littoral - 920 m

Ibla pygmaea Broch, 1922

Synonymy: Broch, 1922: 262
 Diagnosis: Broch, 1922: 262
 Distribution: 18
 Depth: 182 - 291 m

**Ibla quadrivalvis* (Cuvier, 1817)

Synonymy: Cuvier, 1817: pl.1 figs 15-16; Darwin, 1851:
 204
 Diagnosis: Darwin, 1851: 204
 Collection: AM, WAM
 Distribution: 4, 5, 6, 7, 8, 9, 10, 11
 Depth: Littoral

Family Lepadidae Darwin, 1851

Lepas Linnaeus, 1758*Lepas (Lepas)* Pilsbry, 1907b**Lepas (Anatifa) anatifera* Linnaeus, 1758

Synonymy: Linnaeus, 1758: 668; Memmi, 1982: 1165
 Diagnosis: Darwin, 1851: 73; Memmi, 1982: 1165
 Collection: AM, QM, WAM
 Distribution: 1, 2, 3, 4, 5, 8, 9, 10, 11, 12, 13, 16, 17, 18, 19
 Depth: Neuston

**Lepas (Anatifa) anserifera* Linnaeus, 1767

Synonymy: Linnaeus, 1767: 1109; Gruvel, 1905: 106
 Diagnosis: Darwin, 1851: 81; Gruvel, 1905: 106
 Collection: AM, QM, WAM
 Distribution: 1, 2, 3, 4, 5, 8, 9, 10, 11, 12, 13, 16, 17, 18, 19
 Depth: Neuston

**Lepas (Anatifa) australis* Darwin, 1851

Synonymy: Darwin, 1851: 89; Newman & Ross, 1971: 31
 Diagnosis: Darwin, 1851: 89; Gruvel, 1905: 109
 Collection: AM, WAM
 Distribution: 4, 5, 6, 8, 9, 10, 17, 18
 Depth: Neuston

**Lepas (Anatifa) hillii* (Leach, 1818)

Synonymy: Leach, 1818: 413; Gruvel, 1905: 110
 Diagnosis: Darwin, 1851: 77; Gruvel, 1905: 110
 Collection: AM, QM, WAM
 Distribution: 4, 5, 8, 9, 10, 12, 13
 Depth: Neuston

**Lepas (Anatifa) pectinata* Spengler, 1793

Synonymy: Spengler, 1793: 106; Foster, 1978: 33
 Diagnosis: Darwin, 1851: 85; Foster, 1978: 34
 Collection: AM, WAM
 Distribution: 2, 3, 4, 5, 8, 10, 11, 18
 Depth: Neuston

Lepas (Anatifa) testudinata Aurivillius, 1892

Synonymy: Aurivillius, 1892: 123; Foster, 1978: 31
 Diagnosis: Darwin, 1851: 374; Gruvel, 1905: 109
 Collection: WAM
 Distribution: 5, 9, 18
 Depth: Neuston

Lepas (Dosima) Gray, 1825**Lepas (Dosima) fascicularis* Ellis & Solander, 1786

Synonymy: Ellis & Solander, 1786: 197; Newman & Ross, 1971: 33; Foster, 1978: 34
 Diagnosis: Darwin, 1851: 92; Foster, 1978: 34
 Collection: AM, WAM
 Distribution: 5, 8, 10, 18
 Depth: Neuston

Conchoderma Olfers, 1814**Conchoderma auritum* (Linnaeus, 1767)

Synonymy: Linnaeus, 1767: 1110; Gruvel, 1905: 144; Foster, 1978: 36
 Diagnosis: Darwin, 1851: 141
 Collection: AM, QM, WAM
 Distribution: 3, 4, 5, 8, 9, 10, 11, 13, 19
 Depth: Epizoic (fish, turtles, whales; also fouling)

**Conchoderma virgatum* (Spengler, 1790)

Synonymy: Spengler, 1790: 207; Gruvel, 1905: 144; Newman & Ross, 1971: 35
 Diagnosis: Darwin, 1851: 146; Annandale, 1909: 80
 Collection: AM, WAM
 Distribution: 1, 2, 4, 5, 6, 10, 11, 13, 18
 Depth: Epizoic (decapods, fish, turtles, seasnakes, whales; also fouling)

Conchoderma virgatum chelonophilum (Leach, 1818)

Synonymy: Leach, 1818: 412; Stubbings, 1961a: 16
 Diagnosis: Darwin, 1851: 151
 Collection: QM
 Distribution: 13
 Depth: Epizoic (turtles)

Alepas Sander Rang, 1829**Alepas pacifica* Pilsbry, 1907b

Synonymy: Pilsbry, 1907b: 105; Hiro, 1937b: 404; Foster, 1978: 37
 Diagnosis: Pilsbry, 1907b: 105; Nilsson-Cantell, 1921: 243
 Collection: AM
 Distribution: 8, 9, 10, 11
 Depth: Epizoic (Medusae)

Family Oxynaspidae Pilsbry, 1907b*Oxynaspis* Darwin, 1851**Oxynaspis indica* Annandale, 1909

Synonymy: Annandale, 1909: 69; Newman, 1973: 206
 Diagnosis: Annandale, 1909: 69; Darwin, 1851: 134; Broch, 1922: 275
 Collection: WAM
 Distribution: 4, 8, 12, 16, 18
 Depth: 31 - 293 m Epizoic (antipatharians)

Family Poecilasmatidae Annandale, 1910c*Trilasmis* Hinds, 1844**Trilasmis (Poecilasma) eburnea* Hinds, 1844

Synonymy: Hinds, 1844: 60; Pilsbry, 1907a: 183; Nilsson-Cantell, 1938: 9
 Diagnosis: Darwin, 1851: 112
 Collection: WAM
 Distribution: 2, 4, 15
 Depth: 20 - 448 m

Megalasma Hoek, 1883*Megalasma (Megalasma)* Hoek, 1883*Megalasma (Megalasma) striatum* Hoek, 1883

Synonymy: Hoek, 1883: 51; Utinomi, 1958: 292
 Diagnosis: Hoek, 1883: 51
 Collection: AM, QM, WAM
 Distribution: 1, 10, 15, 18
 Depth: Sublittoral - 1070 m

Megalasma (Glyptelasma) Pilsbry, 1907b*Megalasma (Glyptelasma) gigas* (Annandale, 1916)

Synonymy: Annandale, 1916: 299; Nilsson-Cantell, 1938: 10
 Diagnosis: Annandale, 1916: 229; Calman, 1919: 364
 Distribution: 15
 Depth: 73 - 1610 m

Megalasma (Glyptelasma) gracile (Hoek, 1883)

Synonymy: Hoek, 1883: 46; Nilsson-Cantell, 1938: 10
 Diagnosis: Hoek, 1883: 46
 Collection: QM
 Distribution: 18, 19
 Depth: 703 - 918 m

Megalasma (Glyptelasma) hamatum Calman, 1919

Synonymy: Calman, 1919: 370; Nilsson-Cantell, 1928: 23
 Diagnosis: Calman, 1919: 370
 Distribution: 8
 Depth: 366 - 3660 m

Megalasma (Glyptelasma) orientale Calman, 1919

Synonymy: Calman, 1919: 367; Nilsson-Cantell, 1928: 22
 Diagnosis: Calman, 1919: 367; Nilsson-Cantell, 1928: 22
 Collection: AM, MV
 Distribution: 15, 18
 Depth: 1097 - 2743 m

Poecilasma Darwin, 1851**Poecilasma kaempferi* Darwin, 1851

Synonymy: Darwin, 1851: 102; Foster, 1978: 24
 Diagnosis: Darwin, 1851: 102; Nilsson-Cantell, 1921: 254
 Collection: AM, WAM
 Distribution: 4, 5, 6, 8, 9, 10, 12, 14, 15, 18
 Depth: Sublittoral - 1070 m

Octolasmis Gray, 1825*Octolasmis aymonini* Lessona & Tapparone-Canefri, 1874

Synonymy: Lessona & Tapparone-Canefri, 1874: 191; Newman, 1967: 14
 Diagnosis: Lessona & Tapparone-Canefri, 1874: 191; Hiro, 1937b: 419
 Collection: MV
 Distribution: 8
 Depth: 792 - 1908 m

Octolasmis clubii Daniel, 1953

Synonymy: Daniel, 1953: 223
 Diagnosis: Daniel, 1953: 223
 Collection: AM
 Distribution: 10
 Depth: Sublittoral

Octolasmis cor (Aurivillius, 1892)

Synonymy: Aurivillius, 1892: 124; Annandale, 1909: 119; Barnard, 1924: 58
 Diagnosis: Aurivillius, 1894: 20; Annandale, 1909: 119
 Collection: AM
 Distribution: 11, 12
 Depth: 0 - 50 m

Octolasmis geryonophila geryonophila Pilsbry, 1907b

Synonymy: Pilsbry, 1907b: 94
 Diagnosis: Pilsbry, 1907b: 94
 Collection: AM
 Distribution: 10, 11
 Depth: 800 - 1000 m

Octolasmis hawaiiense (Pilsbry), 1907a

Synonymy: Pilsbry, 1907a: 184
 Diagnosis: Pilsbry, 1907a: 184
 Collection: AM
 Distribution: 15
 Depth: 367 - 400 m

Octolasmis hoeki (Nilsson-Cantell), 1927

Synonymy: Nilsson-Cantell, 1927: 763
 Diagnosis: Nilsson-Cantell, 1927: 763
 Collection: AM
 Distribution: 11
 Depth: 60 m

Octolasmis indubia Newman, 1961

Synonymy: Newman, 1961: 102
 Diagnosis: Newman, 1961: 102
 Collection: MV
 Distribution: 8
 Depth: 2510 m

Octolasmis lowei (Darwin, 1851)

Synonymy: Darwin, 1851: 128; Newman, 1960: 106
 Diagnosis: Hiro, 1939c: 206; Newman, 1960: 106
 Collection: AM, WAM
 Distribution: 4, 9, 10
 Depth: 0 - 500 m

**Octolasmis neptuni neptuni* (Macdonald, 1869)

Synonymy: Macdonald, 1869: 440; Wu, 1967: 276; Utinomi, 1970: 343
 Diagnosis: Macdonald, 1869: 440; Newman, 1961: 100
 Collection: AM, WAM
 Distribution: 3, 4, 9, 10, 11, 12
 Depth: 0 - 33 m

Octolasmis nierstraszi (Hoek, 1907)

Synonymy: Hoek, 1907: 21; Stubbings, 1936: 8;
Nilsson-Cantell, 1938: 29
Diagnosis: Hoek, 1907: 21
Distribution: 1
Depth: 16 - 135 m

**Octolasmis orthogonia* (Darwin, 1851)

Synonymy: Darwin, 1851: 130; Nilsson-Cantell, 1938: 29
Diagnosis: Darwin, 1851: 130; Nilsson-Cantell, 1925: 21
Collection: AM, WAM
Distribution: 1, 2, 4, 10, 15, 16, 18
Depth: 0 - 818 m

Octolasmis scuticosta Hiro, 1939a

Synonymy: Hiro, 1939a: 238
Diagnosis: Hiro, 1939a: 238
Collection: AM
Distribution: 11
Depth: Epizoic (*Ranina ranina*)

**Octolasmis warwicki* (Gray, 1825)

Synonymy: Gray, 1825: 100; Nilsson-Cantell, 1928: 18;
Wu, 1967: 274
Diagnosis: Darwin, 1851: 120
Collection: AM
Distribution: 1, 10, 12
Depth: 0 - 87 m

Temnaspis Fischer, 1884

Temnaspis bathynomi (Annandale, 1906b)

Synonymy: Annandale, 1906b: 45; Nilsson-Cantell, 1938:
10
Diagnosis: Annandale, 1906b: 45
Collection: AM, WAM
Distribution: 12, 15, 19
Depth: 356 - 1086 m

Temnaspis fissum Darwin, 1851

Synonymy: Darwin, 1851: 109; Rosell, 1972: 160
Diagnosis: Darwin, 1851: 109; Rosell, 1972: 160
Collection: AM, WAM
Distribution: 4, 10, 18
Depth: 0 - 137 m

Temnaspis kilepoeae Zevina, 1968

Synonymy: Zevina, 1968: 38
Diagnosis: Zevina, 1968: 38
Collection: AM
Distribution: 10
Depth: Epizoic (*Leptomithrax waiteti*)

Temnaspis tridens asymmetrica Broch, 1947

Synonymy: Broch, 1947: 20
Diagnosis: Broch, 1947: 20
Collection: AM
Distribution: 12
Depth: 16 - 296 m

Suborder BALANOMORPHA Pilsbry, 1916

Superfamily Chthamaloidea Darwin, 1854

Family Catophragmidae Utinomi, 1968a

Catomerus Pilsbry, 1916

**Catomerus polymerus* (Darwin, 1854)

Synonymy: Darwin, 1854: 487; Pope, 1965: 16
Diagnosis: Pope, 1965: 16
Collection: AM, WAM
Distribution: 4, 6, 8, 9, 10
Depth: Littoral

Family Chthamalidae Darwin, 1854

Subfamily Pachylasminae Utinomi, 1968a

Pachylasma Darwin, 1854

**Pachylasma aurantiacum* Darwin, 1854

Synonymy: Darwin, 1854: 480; Foster, 1981: 354
Diagnosis: Darwin, 1854: 480; Foster, 1981: 354
Collection: AM
Distribution: 10
Depth: 132 - 2050 m

Pachylasma japonicum Hiro, 1933

Synonymy: Hiro, 1933, 65; Utinomi, 1968a: 22
Diagnosis: Utinomi, 1968a: 22
Collection: QM
Distribution: 19
Depth: 35 - 503 m

**Pachylasma scutistriata* Broch, 1922

Synonymy: Broch, 1922: 301; Utinomi, 1968a: 26
Diagnosis: Utinomi, 1968a: 26
Collection: AM, MV, WAM
Distribution: 6, 8, 9
Depth: 73 - 2060 m

Subfamily Euraphiinae Newman & Ross, 1976*Octomeris* Sowerby, 1825**Octomeris brunnea* Darwin, 1854

Synonymy: Darwin, 1854: 484; Pope, 1965: 20
 Diagnosis: Pope, 1965: 20
 Collection: AM
 Distribution: 12
 Depth: Littoral

Octomeris intermedia Nilsson-Cantell, 1921

Synonymy: Nilsson-Cantell, 1921: 303
 Diagnosis: Nilsson-Cantell, 1921: 303
 Collection: AM
 Distribution: 12
 Depth: Littoral

Subfamily Euraphiinae Newman & Ross, 1976*Euraphia* Conrad, 1837**Euraphia caudata* (Pilsbry), 1916

Synonymy: Pilsbry, 1916: 315; Pope, 1965: 35
 Diagnosis: Pilsbry, 1916: 315; Pope, 1965: 35
 Collection: AM, WAM
 Distribution: 1, 2, 12, 13
 Depth: Littoral

**Euraphia withersi* (Pilsbry, 1916)

Synonymy: Pilsbry, 1916: 312; Pope, 1965: 39
 Diagnosis: Pope, 1965: 39
 Collection: AM, WAM
 Distribution: 1, 12, 14
 Depth: Littoral

Subfamily Chthamalinae Darwin 1854*Chthamalus* Ranzani, 1817**Chthamalus antennatus* Darwin, 1854

Synonymy: Darwin, 1854: 460; Pope, 1965: 45
 Diagnosis: Pope, 1965: 45
 Collection: AM, WAM
 Distribution: 4, 6, 7, 8, 9, 10, 11, 12
 Depth: Littoral

**Chthamalus malayensis* Pilsbry, 1916

Synonymy: Pilsbry, 1916: 310; Pope, 1965: 51
 Diagnosis: Pope, 1965: 51
 Collection: AM, WAM
 Distribution: 1, 2, 3, 4, 11, 12, 13, 14
 Depth: Littoral

Chamaesipho Darwin, 1854**Chamaesipho tasmanica* Foster & Anderson, 1986

Synonymy: Foster & Anderson, 1986: 57
 Diagnosis: Foster & Anderson, 1986: 57
 Collection: AM
 Distribution: 8, 9, 10, 11
 Depth: Littoral

Superfamily Coronuloidea Leach, 1817**Family Coronuloidae Leach, 1817****Subfamily Chelonibiinae Pilsbry, 1916***Chelonibia* Leach, 1817**Chelonibia caretta* (Spengler, 1790)

Synonymy: Spengler, 1790: 185; Pilsbry, 1916: 267
 Diagnosis: Darwin, 1854: 394
 Collection: AM, QM, WAM
 Distribution: 1, 12, 13, 19
 Depth: Epizoic (turtles)

**Chelonibia patula* (Ranzani, 1818)

Synonymy: Ranzani, 1818: 86; Pilsbry, 1916: 268;
 Stubbings, 1967: 297
 Diagnosis: Pilsbry, 1916: 268; Stubbings, 1967: 297
 Collection: AM, QM, WAM
 Distribution: 2, 4, 10, 11, 14
 Depth: Epizoic (decapods)

**Chelonibia testudinaria* (Linnaeus, 1758)

Synonymy: Linnaeus, 1758: 668; Hiro, 1939c: 214
 Diagnosis: Nilsson-Cantell, 1921: 369; Daniel, 1955: 31
 Collection: AM, QM, WAM
 Distribution: 1, 2, 3, 4, 5, 12, 13, 14
 Depth: Epizoic (turtles)

Subfamily Coronulinae Leach, 1817*Cetopirus* Ranzani, 1817**Cetopirus complanatus* (Mörch), 1852

Synonymy: Mörch, 1852: 67; Pilsbry, 1916: 276
 Diagnosis: Pilsbry, 1916: 276
 Collection: AM
 Distribution: 3, 8, 9, 10
 Depth: Epizoic (whales)

Coronula Lamarck, 1802**Coronula diadema* (Linnaeus), 1767

Synonymy: Linnaeus, 1767: 1108; Hiro, 1939c: 214
 Diagnosis: Pilsbry, 1916: 273; Cornwall, 1924: 421
 Collection: AM, WAM
 Distribution: 1, 3, 4, 5, 8, 9, 10, 11
 Depth: Epizoic (whales)

Cylindrolepas Pilsbry, 1916*Cylindrolepas darwiniana* Pilsbry, 1916

Synonymy: Pilsbry, 1916: 288; Hiro, 1936b: 319
 Diagnosis: Pilsbry, 1916: 288; Monroe, 1981: 237
 Collection: AM, QM
 Distribution: 11
 Depth: Epizoic (turtles)

Platylepas Gray, 1825*Platylepas coriacea* Monroe & Limpus, 1979

Synonymy: Monroe & Limpus, 1979: 208
 Diagnosis: Monroe & Limpus, 1979: 208
 Collection: AM, QM
 Distribution: 9, 11
 Depth: Epizoic (seasnakes, turtles)

Platylepas decorata Darwin, 1854

Synonymy: Darwin, 1852: 429; Monroe & Limpus, 1979: 206
 Diagnosis: Nilsson-Cantell, 1921: 376; Monroe & Limpus, 1979: 206
 Collection: AM, QM
 Distribution: 10, 11, 13
 Depth: Epizoic (seasnakes, turtles)

**Platylepas hexastylus* (Fabricius, 1798)

Synonymy: Fabricius, 1798: 35; Pilsbry, 1916: 285
 Diagnosis: Pilsbry, 1916: 285; Hiro, 1937b: 472; Monroe & Limpus, 1979: 206
 Collection: AM, QM
 Distribution: 1, 2, 10, 11, 12, 13
 Depth: Epizoic (fish, seasnakes, turtles)

Platylepas ophiophilus Lanchester, 1902

Synonymy: Lanchester, 1902: 371; Utinomi, 1970: 360
 Diagnosis: Utinomi, 1970: 360
 Collection: AM
 Distribution: 2, 3, 4
 Depth: Epizoic (seasnakes)

Subfamily Xenobalaninae Gruvel, 1903*Stephanolepas* Fischer, 1886*Stephanolepas muricata* Fischer, 1886

Synonymy: Fischer, 1886: 193; Monroe & Limpus, 1979: 201
 Diagnosis: Monroe & Limpus, 1979: 201
 Collection: QM
 Distribution: 11, 12, 13
 Depth: Epizoic (turtles)

Stomatolepas Pilsbry, 1910*Stomatolepas dermochelys* Monroe & Limpus, 1979

Synonymy: Monroe & Limpus, 1979: 203
 Diagnosis: Monroe & Limpus, 1979: 203
 Collection: QM
 Distribution: 11, 12
 Depth: Epizoic (turtles)

Stomatolepas praegustator Pilsbry, 1910: 304

Synonymy: Pilsbry, 1910: 304; Monroe & Limpus, 1979: 203
 Diagnosis: Pilsbry, 1910: 304
 Collection: AM, QM
 Distribution: 11, 12, 13
 Depth: Epizoic (turtles)

Stomatolepas transversa Nilsson-Cantell, 1930a: 2

Synonymy: Nilsson-Cantell, 1930a: 2; Monroe & Limpus, 1979: 205
 Diagnosis: Nilsson-Cantell, 1930a: 2
 Collection: QM
 Distribution: 13
 Depth: Epizoic (turtles)

Tubicinella Lamarck, 1802*Tubicinella cheloniae* Monroe & Limpus, 1979

Synonymy: Monroe & Limpus, 1979: 199
 Diagnosis: Monroe & Limpus, 1979: 199
 Collection: AM, QM
 Distribution: 11, 12
 Depth: Epizoid (turtles)

Xenobalanus Steenstrup, 1851**Xenobalanus globicipitis* Steenstrup 1851

Synonymy: Steenstrup, 1851: pl.3 figs 11-15; Cornwall, 1927: 510; Stubbings, 1965: 902
 Diagnosis: Cornwall, 1927: 510; Stubbings, 1965: 902
 Collection: AM
 Distribution: 1, 10, 13
 Depth: Epizoid (fish, dolphins, porpoises, whales)

Family Bathylasmatidae Newman & Ross, 1971

Subfamily Hexelasminae Newman & Ross, 1976

Hexelasma Hoek, 1913*Hexelasma alearum* Foster, 1978

Synonymy: Foster, 1978: 80
 Diagnosis: Foster, 1978: 80
 Collection: AM, MV
 Distribution: 8
 Depth: 414 - 1750 m

Hexelasma nolearia Foster, 1978

Synonymy: Foster, 1978: 85; Foster, 1981: 361
 Diagnosis: Foster, 1978: 85
 Collection: MV
 Distribution: 17
 Depth: 70 - 778 m

Family Tetracitidae Gruvel, 1903

Subfamily Austrobalaninae Newman & Ross, 1976

Austrobalanus Pilsbry, 1916**Austrobalanus imperator* (Darwin, 1854)

Synonymy: Darwin, 1854: 288; Pope, 1945: 364; Ross, 1971: 266
 Diagnosis: Pope, 1945: 364; Ross, 1971: 266
 Collection: AM
 Distribution: 10, 11, 12
 Depth: Littoral

Epopella Ross, 1970**Epopella simplex* (Darwin, 1854)

Synonymy: Darwin, 1854: 353; Pope, 1945: 370; Ross, 1970: 9
 Diagnosis: Pope, 1945: 370; Ross, 1970: 9
 Collection: AM, WAM
 Distribution: 4, 5, 7, 8, 9, 10
 Depth: Littoral

Subfamily Tetracitellinae Newman & Ross, 1976

Tetracitella Hiro, 1939b*Tetracitella divisa* (Nilsson-Cantell, 1921)

Synonymy: Nilsson-Cantell, 1921: 362; Ross, 1968: 13
 Diagnosis: Stubbings, 1967: 291
 Collection: AM
 Distribution: 12
 Depth: Littoral

**Tetracitella multicostata* (Nilsson-Cantell, 1930a)

Synonymy: Nilsson-Cantell, 1930a: 2; Utinomi, 1962: 231
 Diagnosis: Utinomi, 1962: 231
 Collection: AM
 Distribution: 1, 12
 Depth: Littoral

**Tetracitella purpurascens* (Wood, 1815)

Synonymy: Wood, 1815: 55; Nilsson-Cantell, 1921: 358; Foster & Anderson, 1986: 64
 Diagnosis: Pope, 1945: 367; Foster & Anderson, 1986: 64
 Collection: AM, WAM
 Distribution: 4, 5, 6, 7, 8, 9, 10, 11, 12, 13
 Depth: Littoral

Subfamily Tetracitinae Gruvel, 1903

Tesseropora Pilsbry, 1916**Tesseropora rosea* (Krauss, 1848)

Synonymy: Krauss, 1848: 136; Pilsbry, 1916: 260
 Diagnosis: Pope, 1945: 366
 Collection: AM, WAM
 Distribution: 4, 8, 10, 11, 12
 Depth: Littoral

Tesseropora wireni (Nilsson-Cantell, 1921)

Synonymy: Nilsson-Cantell, 1921: 366; Hiro, 1937a: 68
 Diagnosis: Hiro, 1937a: 68
 Collection: AM
 Distribution: 18
 Depth: Littoral

Tetraclita Schumacher, 1817

**Tetraclita coerulescens* (Spengler, 1790)

Synonymy: Spengler, 1790: 19; Nilsson-Cantell, 1938: 77
 Diagnosis: Broch, 1931: 116
 Collection: AM
 Distribution: 12
 Depth: Littoral

**Tetraclita squamosa squamosa* (Bruguère, 1789)

Synonymy: Bruguère, 1789: 170; Henry, 1957: 33
 Diagnosis: Pilsbry, 1916: 251; Krüger, 1911a: 61
 Collection: AM, WAM
 Distribution: 1, 2, 3, 4, 12, 13, 14
 Depth: Littoral - 5 m

**Tetraclita vitiata* Darwin, 1854

Synonymy: Darwin, 1854: 340; Nilsson-Cantell, 1938: 76
 Diagnosis: Broch, 1922: 339
 Collection: AM, WAM
 Distribution: 1, 2, 12, 13
 Depth: Littoral

Superfamily Balanoidea Leach, 1817

Family Archaeobalanidae Newman & Ross, 1976

Subfamily Archaeobalaninae Newman & Ross, 1976

Armatobalanus Hoek, 1913

**Armatobalanus allium* (Darwin, 1854)

Synonymy: Darwin, 1854: 281; Zullo, 1963: 588
 Diagnosis: Utinomi, 1949: 30
 Collection: AM
 Distribution: 1, 13
 Depth: 9 - 55 m

Armatobalanus arcuatus Hoek, 1913

Synonymy: Hoek, 1913: 210
 Diagnosis: Hoek, 1913: 210
 Collection: AM
 Distribution: 1
 Depth: 9 m

Armatobalanus cepa (Darwin, 1854)

Synonymy: Darwin, 1854: 283; Nilsson-Cantell, 1938: 52; Utinomi, 1949: 29
 Diagnosis: Nilsson-Cantell, 1938: 52; Utinomi, 1949: 29
 Collection: AM
 Distribution: 1
 Depth: Sublittoral - 50 m

Armatobalanus filigranus (Broch, 1916)

Synonymy: Broch, 1916: 8
 Diagnosis: Broch, 1916: 8
 Collection: AM
 Distribution: 2
 Depth: 3 - 26 m

Armatobalanus terebratus (Darwin, 1854)

Synonymy: Darwin, 1854: 285; Nilsson-Cantell, 1938: 51
 Diagnosis: Hoek, 1913: 207
 Collection: AM
 Distribution: 1, 2
 Depth: 0 - 55 m

Chirona Gray, 1835

Chirona (Striatobalanus) Hoek, 1913

**Chirona (Striatobalanus) amaryllis* (Darwin, 1854)

Synonymy: Darwin, 1854: 279; Hoek, 1913: 179
 Diagnosis: Darwin, 1854: 279; Hoek, 1913: 179
 Collection: AM, WAM
 Distribution: 1, 2, 3, 10, 11, 12, 14, 15, 18, 19
 Depth: 0 - 500 m

Chirona (Striatobalanus) bimae (Hoek, 1913)

Synonymy: Hoek, 1913: 182
 Diagnosis: Hoek, 1913: 182
 Collection: AM
 Distribution: 1
 Depth: 12 - 35 m

Chirona (Striatobalanus) tenuis (Hoek, 1883)

Synonymy: Hoek, 1883: 154; Hiro, 1937b: 439
 Diagnosis: Hoek, 1913: 185
 Collection: AM, QM, WAM
 Distribution: 1, 2, 3, 4, 12, 19
 Depth: 7 - 522 m

Solidobalanus Hoek, 1913**Solidobalanus auricoma* (Hoek, 1913)

Synonymy: Hoek, 1913: 198; Zullo & Newman, 1964: 198
 Diagnosis: Hoek, 1913: 198; Nilsson-Cantell, 1938: 49
 Collection: AM, MV, WAM
 Distribution: 1, 2, 5, 8, 10, 18
 Depth: Sublittoral - 376 m

Solidobalanus ciliatus (Hoek, 1913)

Synonymy: Hoek, 1913: 199; Zullo & Newman, 1964: 368;
 Henry & McLaughlin, 1967: 47
 Diagnosis: Hoek, 1913: 199; Nilsson-Cantell, 1934: 68
 Collection: AM
 Distribution: 2, 11
 Depth: 13 - 220 m

Solidobalanus compressus (Hoek, 1913)

Synonymy: Hoek, 1913: 202; Zullo & Newman, 1964: 369;
 Henry & McLaughlin, 1967: 47
 Diagnosis: Hoek, 1913: 202
 Collection: AM
 Distribution: 5
 Depth: 75 - 112 m

Solidobalanus solidus (Broch, 1931)

Synonymy: Broch, 1931: 76; Zullo & Newman, 1964: 369;
 Henry & McLaughlin, 1967: 47
 Diagnosis: Broch, 1931: 76
 Collection: AM
 Distribution: 12
 Depth: 5 - 300 m

Membranobalanus Hoek, 1913*Membranobalanus cuneiformis* (Hiro, 1936a)

Synonymy: Hiro, 1936a: 627; Hiro, 1939a: 243
 Diagnosis: Hiro, 1939a: 243
 Collection: AM
 Distribution: 1
 Depth: 0 - 15 m

Acasta (Leach), 1817*Acasta antipathidis* Broch, 1916

Synonymy: Broch, 1916: 13
 Diagnosis: Broch, 1916: 13
 Collection: AM
 Distribution: 2
 Depth: 23 - 24 m

Acasta cyathus Darwin, 1854

Synonymy: Darwin, 1854: 312; Zullo & Standing, 1983:
 468
 Diagnosis: Pilsbry, 1916: 244
 Collection: AM, MV
 Distribution: 1, 4, 10
 Depth: 15 - 180 m

**Acasta dofleini* Krüger, 1911a

Synonymy: Krüger, 1911a: 56; Hiro, 1937b: 454
 Diagnosis: Broch, 1922: 330
 Collection: AM, MV, WAM
 Distribution: 1, 2, 4, 5, 12
 Depth: Littoral - 280 m

**Acasta glans* Lamarck, 1818

Synonymy: Lamarck, 1818: 398; Utinomi, 1969: 91
 Diagnosis: Hoek, 1913: 241
 Collection: AM, WAM
 Distribution: 2, 6, 10, 11
 Depth: 15 - 55 m

Acasta hirsuta Broch, 1916

Synonymy: Broch, 1916: 10
 Diagnosis: Broch, 1916: 10
 Collection: AM
 Distribution: 1, 2
 Depth: 24 - 140 m

Acasta pectinipes Pilsbry, 1912

Synonymy: Pilsbry, 1912: 294; Hiro, 1937b: 463
 Diagnosis: Nilsson-Cantell, 1938: 57
 Collection: AM, MV
 Distribution: 3, 8, 11
 Depth: 0 - 170 m

Acasta purpurata Darwin, 1854

Synonymy: Darwin, 1854: 318
 Diagnosis: Darwin, 1854: 318
 Collection: AM
 Distribution: 12
 Depth: 0 - 5 m

Acasta spinitergum Broch, 1931

Synonymy: Broch, 1931: 112
 Diagnosis: Broch, 1931: 112
 Collection: AM
 Distribution: 1
 Depth: 0 - 35 m

Acasta spongites (Poli, 1795)

Synonymy: Poli, 1795: 75; Darwin, 1854: 308
 Diagnosis: Utinomi, 1958: 300
 Collection: AM, WAM
 Distribution: 1, 4, 5
 Depth: 5-33 m

**Acasta sulcata* Lamarck, 1818

Synonymy: Lamarck, 1818: 398; Darwin, 1854: 310; Hiro, 1937b: 451
 Diagnosis: Stubbings, 1961b: 174
 Collection: AM, WAM
 Distribution: 1, 3, 4, 6, 10, 11
 Depth: 5-25 m

**Acasta zuiho* (Hiro, 1936a)

Synonymy: Hiro, 1936a: 632; Newman & Ross, 1976: 54
 Diagnosis: Hiro, 1936a: 632
 Collection: AM
 Distribution: 1
 Depth: Unknown

Conopea Say, 1822

**Conopea calceola* (Ellis, 1758)

Synonymy: Ellis, 1758: 853; Hiro, 1937b: 443
 Diagnosis: McLaughlin & Henry, 1972: 24
 Collection: AM, WAM
 Distribution: 1, 2, 11, 12
 Depth: 16-250 m

Conopea cymbiformis (Darwin, 1854)

Synonymy: Darwin, 1854: 221; Utinomi, 1962: 219
 Diagnosis: Darwin, 1854: 221
 Collection: AM
 Distribution: 1
 Depth: 27-453 m

Conopea mjobergi (Broch, 1916)

Synonymy: Broch, 1916: 7; Newman & Ross, 1976: 55
 Diagnosis: Broch, 1916: 7
 Collection: AM
 Distribution: 2
 Depth: 45-220 m

Subfamily Elminiinae Foster, 1982

Elminius Leach, 1825

Elminius (Austrominius) Buckeridge, 1983

Elminius adalaidae Bayliss, 1988

Synonymy: Bayliss, 1988: 75
 Diagnosis: Bayliss, 1988: 75
 Collection: MV, SAM, WAM
 Distribution: 7
 Depth: Littoral

Elminius (Austrominius) covertus Foster, 1982

Synonymy: Foster, 1982: 24
 Diagnosis: Foster, 1982: 24
 Collection: AM, MV, WAM
 Distribution: 4, 5, 6, 7, 8, 9, 10, 11, 12
 Depth: Littoral

**Elminius (Austrominius) modestus* Darwin, 1854

Synonymy: Darwin, 1854: 350; Foster, 1982: 23
 Diagnosis: Darwin, 1854: 350; Foster, 1982: 23
 Collection: AM, WAM
 Distribution: 5, 6, 8, 9, 10
 Depth: Littoral

Hexaminius Foster, 1982

Hexaminius foliorum Anderson, Anderson & Egan, 1988

Diagnosis: Anderson, Anderson & Egan, 1988: 207
 Collection: AM
 Distribution: 10
 Depth: Littoral

Hexaminius popeiana Foster, 1982

Diagnosis: Foster, 1982: 28
 Collection: AM
 Distribution: 10, 12
 Depth: Littoral

Family Pyrgomatidae Gray, 1825**Subfamily Pyrgomatinae Gray, 1825***Cantellius* Ross & Newman, 1973*Cantellius acutum* (Hiro, 1938)

Synonymy: Hiro, 1938: 398; Utinomi, 1962: 227; Ross & Newman, 1973: 150
 Diagnosis: Hiro, 1938: 398
 Collection: AM
 Distribution: 12, 13
 Depth: 0-5 m

Cantellius euspinulosum (Broch, 1931)

Synonymy: Broch, 1931: 118; Utinomi, 1962: 226
 Diagnosis: Darwin, 1854: 377; Hiro, 1935: 5
 Collection: AM
 Distribution: 18
 Depth: 0-20 m

Cantellius gregarius (Sowerby, 1823)

Synonymy: Sowerby, 1823: no pagination; Ross & Newman, 1973: 150
 Diagnosis: Darwin, 1854: 378; Nilsson-Cantell, 1938: 30
 Collection: AM
 Distribution: 13
 Depth: 0-70 m

Cantellius pallidus (Broch, 1931)

Synonymy: Broch, 1931: 118; Hiro, 1935: 6
 Diagnosis: Hiro, 1935: 6
 Collection: AM
 Distribution: 13, 18
 Depth: 0-5 m

Cantellius secundus (Broch, 1931)

Synonymy: Broch, 1931: 118; Utinomi, 1962: 227; Ross & Newman, 1973: 153
 Diagnosis: Darwin, 1854: 378
 Collection: AM
 Distribution: 13, 18
 Depth: 0-20 m

Cantellius septimus (Hiro, 1938)

Synonymy: Hiro, 1938: 395; Ross & Newman, 1973: 153
 Diagnosis: Darwin, 1854: 380
 Collection: AM
 Distribution: 13, 18
 Depth: 0-20 m

Savignium Leach, 1925*Savignium crenatum* (Sowerby, 1823)

Synonymy: Sowerby, 1823: no pagination; Ross & Newman, 1973: 159
 Diagnosis: Darwin, 1854: 370
 Collection: AM
 Distribution: 13
 Depth: 0-20 m

Savignium dentatum (Darwin, 1854)

Synonymy: Darwin, 1854: 369; Hiro, 1935: 12
 Diagnosis: Hiro, 1935: 12
 Collection: AM, WAM
 Distribution: 1, 2, 3, 4, 13
 Depth: 0-20 m

Savignium elongatum (Hiro, 1931)

Synonymy: Hiro, 1931: 154
 Diagnosis: Hiro, 1931: 154
 Collection: AM
 Distribution: 13
 Depth: 0-5 m

Savignium milleporum (Darwin, 1854)

Synonymy: Darwin, 1854: 367; Ross & Newman, 1973: 59
 Diagnosis: Darwin, 1854: 367
 Collection: AM
 Distribution: 13
 Depth: 0-5 m

Creusia Leach, 1817**Creusia spinulosa* Leach, 1818

Synonymy: Leach, 1818: 171; Ross & Newman, 1973: 154
 Diagnosis: Darwin, 1854: 380
 Collection: AM
 Distribution: 13
 Depth: 0-5 m

Nobia Sowerby, 1839*Nobia conjugatum* (Darwin, 1854)

Synonymy: Darwin, 1854: 364; Ross & Newman, 1973: 155
 Diagnosis: Hiro, 1935: 15
 Collection: AM
 Distribution: 1
 Depth: 4-9 m

Nobia grandis Sowerby, 1839

Synonymy: Sowerby, 1839: 71; Darwin, 1854: 365;
Nilsson-Cantell, 1938: 68
Diagnosis: Darwin, 1854: 365
Collection: AM
Distribution: 1
Depth: 4-9 m

Nobia projectum (Nilsson-Cantell, 1938)

Synonymy: Nilsson-Cantell, 1938: 70
Diagnosis: Nilsson-Cantell, 1938: 70
Collection: AM
Distribution: 13
Depth: 0-5 m

Pyrgoma Leach, 1817*Pyrgoma cancellata* Leach, 1818

Synonymy: Leach, 1818: 171; Hiro, 1935: 10; Ross &
Newman, 1973: 156
Diagnosis: Nilsson-Cantell, 1938: 67
Collection: AM
Distribution: 1
Depth: 4-9 m

Family Balanidae Leach, 1817

Balanus da Costa, 1778Group of *Balanus amphitrite**Balanus albicostatus* Pilsbry, 1916

Synonymy: Pilsbry, 1916: 90; Utinomi, 1967b: 209
Diagnosis: Utinomi, 1967b: 209
Collection: AM
Distribution: 10
Depth: Fouling

**Balanus amphitrite* Darwin, 1854

Synonymy: Darwin, 1854: 240; Utinomi, 1967b: 200;
Southward, 1975: 6
Diagnosis: Harding, 1962: 274; Stubbings, 1967: 271
Collection: AM, WAM
Distribution: 2, 3, 4, 5, 6, 7, 8, 9, 10, 11, 12
Depth: Littoral - 9 m (and fouling)

Balanus cirratus Darwin, 1854

Synonymy: Darwin, 1854: 241; Lewis, 1985: 129
Diagnosis: Harding, 1962: 293; Lewis, 1985: 129
Collection: AM, WAM
Distribution: 1, 2
Depth: Littoral - sublittoral

Balanus pallidus (Darwin, 1854)

Synonymy: Darwin, 1854: 240; Utinomi, 1967b: 206
Diagnosis: Stubbings, 1963: 15
Collection: AM
Distribution: 4, 5
Depth: Littoral

Balanus reticulatus Utinomi, 1967b

Synonymy: Utinomi, 1967b: 216; Southward, 1975: 11
Diagnosis: Southward, 1975: 11
Collection: AM, WAM
Distribution: 4, 12, 14
Depth: Littoral - 56 m

**Balanus variegatus* Darwin, 1854

Synonymy: Darwin, 1854: 241; Lewis, 1985: 119
Diagnosis: Lewis, 1985: 119
Collection: AM, QM, WAM
Distribution: 3, 4, 5, 6, 7, 8, 10, 11, 12
Depth: Littoral (and fouling)

Group of *Balanus trigonus***Balanus trigonus* Darwin, 1854

Synonymy: Darwin, 1854: 223; Pilsbry, 1916: 111
Diagnosis: Pilsbry, 1916: 111
Collection: AM, MV, QM, WAM
Distribution: 2, 3, 4, 8, 9, 10, 11, 12
Depth: 3 - 120 m

Subfamily Megabalaninae Newman, 1979

Notomegabalanus Newman, 1979*Notomegabalanus algicola* (Pilsbry, 1916)

Synonymy: Pilsbry, 1916: 72; Utinomi, 1968b: 170
Diagnosis: Pilsbry, 1916: 72
Collection: AM
Distribution: 10
Depth: Sublittoral (and fouling)

Austromegabalanus Newman, 1979**Austromegabalanus nigrescens* (Lamarck, 1818)

Synonymy: Lamarck, 1818: 391; Darwin, 1854: 210
Diagnosis: Krüger, 1914: 435; Pope, 1945: 361
Collection: AM, WAM
Distribution: 4, 5, 6, 7, 8, 9, 10, 11, 12
Depth: Littoral - 9 m

Megabalanus Hoek, 1913**Megabalanus ajax* (Darwin, 1854)

Synonymy: Darwin, 1854: 214; Henry & McLaughlin, 1986: 49
 Diagnosis: Nilsson-Cantell, 1938: 34; Henry & McLaughlin, 1986: 49
 Collection: AM
 Distribution: 13
 Depth: 0-5 m

Megabalanus rosa (Pilsbry, 1916)

Synonymy: Pilsbry, 1916: 61; Henry & McLaughlin, 1986: 37
 Diagnosis: Yamaguchi, 1973: 130; Henry & McLaughlin, 1986: 37
 Collection: AM, WAM
 Distribution: 2, 3, 10
 Depth: Littoral - 300 m (and fouling)

**Megabalanus tintinnabulum* (Linnaeus, 1758)

Synonymy: Linnaeus, 1758: 668; Henry & McLaughlin, 1986: 17
 Diagnosis: Pilsbry, 1916: 55; Henry & McLaughlin, 1986: 17
 Collection: AM, MV, WAM
 Distribution: 1, 2, 3, 4, 8, 10, 12
 Depth: Littoral - sublittoral (and fouling)

Megabalanus validus (Darwin, 1854)

Synonymy: Darwin, 1854: 195; Henry & McLaughlin, 1986: 43
 Diagnosis: Hoek, 1913: 164, 166; Henry & McLaughlin, 1986: 43
 Collection: AM
 Distribution: 3
 Depth: Littoral - 12.5 m

Megabalanus volcano (Pilsbry, 1916)

Synonymy: Pilsbry, 1916: 60; Henry & McLaughlin, 1986: 45
 Diagnosis: Pilsbry, 1916: 60; Henry & McLaughlin, 1986: 45
 Collection: AM
 Distribution: 10
 Depth: (Fouling)

Suborder VERRUCOMORPHA Pilsbry, 1916

Family Verrucidae Darwin, 1854

Altiverruca Pilsbry, 1916*Altiverruca conchula* Hoek, 1913

Synonymy: Hoek, 1913: 146
 Diagnosis: Hoek, 1913: 146
 Collection: QM
 Distribution: 1, 19
 Depth: 310-908 m

Altiverruca cristallina Gruvel, 1907

Synonymy: Gruvel, 1907: 2; Nilsson-Cantell, 1929: 477
 Diagnosis: Gruvel, 1907: 2; Hoek, 1913: 138
 Distribution: 1
 Depth: 794 - 1600 m

Altiverruca gibbosa Hoek, 1883

Synonymy: Hoek, 1883: 134; Nilsson-Cantell, 1928: 25
 Diagnosis: Hoek, 1883: 134, 139
 Collection: QM
 Distribution: 1, 19
 Depth: 590 - 1203 m

Altiverruca navicula Hoek, 1913

Synonymy: Hoek, 1913: 134; Nilsson-Cantell, 1927: 778
 Diagnosis: Hoek, 1913: 134; Nilsson-Cantell, 1927: 778
 Collection: QM
 Distribution: 1, 8, 10, 19
 Depth: 520 - 2745 m

Metaverruca Pilsbry, 1916*Metaverruca sculpta* Aurivillius, 1898

Synonymy: Aurivillius, 1898: 197; Nilsson-Cantell, 1929: 461
 Diagnosis: Aurivillius, 1898: 197; Pilsbry, 1907a: 188; Hoek, 1913: 130
 Collection: AM, QM
 Distribution: 1, 8, 10, 19
 Depth: 252 - 2018 m

Order ACROTHORACICA Gruvel, 1905

Suborder PYGOPHORA Berndt, 1907

Family Lithoglyptidae Aurivillius, 1892

Weltneria Berndt, 1907

Weltneria apta Tomlinson, 1969

Synonymy: Tomlinson, 1969: 44
 Diagnosis: Tomlinson, 1969: 44
 Collection: AM, MV
 Distribution: 10
 Depth: Sublittoral - 940 m

Weltneria hirsuta (Tomlinson, 1963)

Synonymy: Tomlinson, 1963: 299; Tomlinson, 1969: 36
 Diagnosis: Tomlinson, 1969: 36
 Collection: AM, MV
 Distribution: 8
 Depth: 90m

Weltneria reticulata Tomlinson, 1969

Synonymy: Tomlinson, 1969: 39
 Diagnosis: Tomlinson, 1969: 39
 Collection: AM, MV
 Distribution: 13
 Depth: Sublittoral

Lithoglyptes Aurivillius, 1892

Lithoglyptes habei (Tomlinson, 1963)

Synonymy: Tomlinson, 1963: 270; Tomlinson, 1969: 61
 Diagnosis: Tomlinson, 1969: 61
 Collection: AM, MV
 Distribution: 7, 10, 12
 Depth: 10m

Lithoglyptes scamborachis Tomlinson, 1969

Synonymy: Tomlinson, 1969: 55
 Diagnosis: Tomlinson, 1969: 55
 Collection: AM, MV
 Distribution: 13
 Depth: Sublittoral

Lithoglyptes spinatus Tomlinson & Newman, 1960

Synonymy: Tomlinson & Newman, 1960: 519; Tomlinson, 1969: 49
 Diagnosis: Tomlinson, 1969: 49
 Collection: AM, MV
 Distribution: 10, 13
 Depth: Littoral

Kochlorine Noll, 1872a

Kochlorine anchorella Tomlinson, 1969

Synonymy: Tomlinson, 1969: 69
 Diagnosis: Tomlinson, 1969: 69
 Collection: MV
 Distribution: 10, 12, 13
 Depth: Sublittoral

Kochlorine hamata Noll, 1872a

Synonymy: Noll, 1872a: 50; Tomlinson, 1969: 65
 Diagnosis: Tomlinson, 1969: 65
 Collection: AM, MV
 Distribution: 1
 Depth: Sublittoral

Berndtia Utinomi, 1950

Berndtia fossata Tomlinson, 1969

Synonymy: Tomlinson, 1969: 79
 Diagnosis: Tomlinson, 1969: 79
 Collection: AM
 Distribution: 1, 13
 Depth: 4 - 9 m

Berndtia purpurea Utinomi, 1950

Synonymy: Utinomi, 1950: 84; Tomlinson, 1969: 79
 Diagnosis: Tomlinson, 1969: 79
 Collection: AM
 Distribution: 1
 Depth: 4 - 9 m

Family Cryptophialidae Gerstaecker, 1866

Cryptophialus Darwin, 1854

Cryptophialus heterodontus Tomlinson, 1969

Synonymy: Tomlinson, 1969: 90
 Diagnosis: Tomlinson, 1969: 90
 Collection: AM, MV
 Distribution: 13
 Depth: Sublittoral

Cryptophialus lanceolatus Tomlinson, 1969

Synonymy: Tomlinson, 1969: 107
 Diagnosis: Tomlinson, 1969: 107
 Collection: AM, MV
 Distribution: 13
 Depth: Sublittoral

Cryptophialus wainwrighti Tomlinson, 1969

Synonymy: Tomlinson, 1969: 97
 Diagnosis: Tomlinson, 1969: 97
 Collection: AM, MV
 Distribution: 13
 Depth: Sublittoral

Geographical Occurrence of Australian Cirripede Species

1. NORTH COAST

Littoral	<i>Lithotrya valentiana</i> <i>Ibla cumingi</i> <i>Euraphia caudata</i> <i>Euraphia withersi</i> <i>Chthamalus malayensis</i> <i>Tetraclitella multicosmata</i> <i>Tetraclita squamosa squamosa</i> <i>Tetraclita vitiata</i> <i>Balanus cirratus</i> <i>Megabalanus tintinnabulum</i>
Neuston	<i>Lepas (Anatifa) anatifera</i> <i>Lepas (Anatifa) anserifera</i>
Sublittoral (- 200 m)	<i>Lithotrya dorsalis</i> <i>Lithotrya valentiana</i> <i>Scalpellum stearnsi</i> <i>Heteralepas japonica</i> <i>Conchoderma virgatum</i> <i>Megalasma (Megalasma) striatum</i> <i>Octolasmis nierstraszi</i> <i>Octolasmis orthogonia</i> <i>Octolasmis warwicki</i> <i>Chelonibia caretta</i> <i>Chelonibia testudinaria</i> <i>Coronula diadema</i> <i>Platylepas hexastylus</i> <i>Xenobalanus globicipitis</i> <i>Tetraclita squamosa squamosa</i> <i>Armatobalanus allium</i> <i>Armatobalanus arcuatus</i> <i>Armatobalanus cepa</i> <i>Armatobalanus terebratus</i> <i>Chirona (Striatobalanus) amaryllis</i> <i>Chirona (Striatobalanus) bimae</i> <i>Chirona (Striatobalanus) tenuis</i> <i>Solidobalanus auricoma</i> <i>Membranobalanus cuneiformis</i> <i>Acasta cyathus</i> <i>Acasta dofleini</i> <i>Acasta hirsuta</i> <i>Acasta spinitergum</i> <i>Acasta spongites</i> <i>Acasta sulcata</i> <i>Acasta zuiho</i> <i>Conopea calceola</i> <i>Conopea cymbiformis</i> <i>Savignium dentatum</i> <i>Nobia conjugatum</i> <i>Nobia grandis</i> <i>Pyrgoma cancellata</i> <i>Balanus cirratus</i> <i>Megabalanus tintinnabulum</i> <i>Kochlorine hamata</i> <i>Berndtia fossata</i> <i>Berndtia purpurea</i>
Deep (200 m +)	<i>Scalpellum stearnsi</i> <i>Litoscalpellum juddi</i>

Verum virgatum
Heteralepas japonica
Megalasma (Megalasma) striatum
Octolasmis orthogonia
Chirona (Striatobalanus) amaryllis
Chirona (Striatobalanus) tenuis
Solidobalanus auricoma
Conopea cymbiformis
Altierruca conchula
Altierruca cristallina
Altierruca gibbosa
Altierruca navicula
Metaverruca sculpta

2. NORTH-WEST COAST

Littoral	<i>Lithotrya valentiana</i> <i>Ibla cumingi</i> <i>Euraphia caudata</i> <i>Chthamalus malayensis</i> <i>Tetraclita squamosa squamosa</i> <i>Balanus amphitrite</i> <i>Balanus cirratus</i> <i>Megabalanus rosa</i> <i>Megabalanus tintinnabulum</i>
Neuston	<i>Lepas (Anatifa) anatifera</i> <i>Lepas (Anatifa) anserifera</i> <i>Lepas (Anatifa) pectinata</i>
Sublittoral (- 200 m)	<i>Lithotrya dorsalis</i> <i>Scalpellum stearnsi</i> <i>Heteralepas japonica</i> <i>Conchoderma virgatum</i> <i>Trilasmis (Poecilasma) eburnea</i> <i>Octolasmis orthogonia</i> <i>Chelonibia patula</i> <i>Chelonibia testudinaria</i> <i>Platylepas hexastylus</i> <i>Platylepas ophiophilus</i> <i>Tetraclita squamosa squamosa</i> <i>Armatobalanus filigranus</i> <i>Armatobalanus terebratus</i> <i>Chirona (Striatobalanus) amaryllis</i> <i>Chirona (Striatobalanus) tenuis</i> <i>Solidobalanus auricoma</i> <i>Solidobalanus ciliatus</i> <i>Acasta antipathidis</i> <i>Acasta dofleini</i> <i>Acasta glans</i> <i>Acasta hirsuta</i> <i>Conopea calceola</i> <i>Conopea mjobergi</i> <i>Savignium dentatum</i> <i>Balanus amphitrite</i> <i>Balanus cirratus</i> <i>Balanus trigonus</i> <i>Megabalanus rosa</i> <i>Megabalanus tintinnabulum</i>
Deep (200 m +)	<i>Scalpellum stearnsi</i> <i>Heteralepas japonica</i> <i>Trilasmis (Poecilasma) eburnea</i>

	<i>Octolasmis orthogonia</i> <i>Chirona (Striatobalanus) amaryllis</i> <i>Chirona (Striatobalanus) tenuis</i> <i>Solidobalanus auricoma</i>	Sublittoral (- 200 m)	<i>Smilium peronii</i> <i>Paralepas georgei</i> <i>Paralepas quadrata</i> <i>Conchoderma auritum</i> <i>Conchoderma virgatum</i> <i>Oxynaspis indica</i> <i>Trilasmis (Poecilasma) eburnea</i> <i>Poecilasma kaempferi</i> <i>Octolasmis lowei</i> <i>Octolasmis neptuni neptuni</i> <i>Octolasmis orthogonia</i> <i>Temnaspis fissum</i> <i>Chelonibia patula</i> <i>Chelonibia testudinaria</i> <i>Coronula diadema</i> <i>Platylepas ophiophilus</i> <i>Tetraclita squamosa squamosa</i> <i>Chirona (Striatobalanus) tenuis</i> <i>Acasta cyathus</i> <i>Acasta dofeini</i> <i>Acasta spongites</i> <i>Acasta sulcata</i> <i>Savignium dentatum</i> <i>Balanus reticulatus</i> <i>Balanus trigonus</i> <i>Austromegabalanus nigrescens</i> <i>Megabalanus tintinnabulum</i>
3. CENTRAL WEST COAST			
Littoral	<i>Chthamalus malayensis</i> <i>Tetraclita squamosa squamosa</i> <i>Balanus amphitrite</i> <i>Balanus variegatus</i> <i>Megabalanus rosa</i> <i>Megabalanus tintinnabulum</i> <i>Megabalanus validus</i>		
Neuston	<i>Lepas (Anatifa) anatifera</i> <i>Lepas (Anatifa) anserifera</i> <i>Lepas (Anatifa) pectinata</i>		
Sublittoral (- 200 m)	<i>Calantica studeri</i> <i>Conchoderma auritum</i> <i>Octolasmis neptuni neptuni</i> <i>Chelonibia testudinaria</i> <i>Cetopirus complanatus</i> <i>Coronula diadema</i> <i>Platylepas ophiophilus</i> <i>Tetraclita squamosa squamosa</i> <i>Chirona (Striatobalanus) amaryllis</i> <i>Chirona (Striatobalanus) tenuis</i> <i>Acasta pectinipes</i> <i>Acasta sulcata</i> <i>Savignium dentatum</i> <i>Balanus amphitrite</i> <i>Balanus trigonus</i> <i>Megabalanus rosa</i> <i>Megabalanus tintinnabulum</i> <i>Megabalanus validus</i>	Deep (200 m +)	<i>Oxynaspis indica</i> <i>Trilasmis (Poecilasma) eburnea</i> <i>Poecilasma kaempferi</i> <i>Octolasmis lowei</i> <i>Octolasmis orthogonia</i> <i>Chirona (Striatobalanus) tenuis</i>
Deep (200 m +)	<i>Chirona (Striatobalanus) amaryllis</i> <i>Chirona (Striatobalanus) tenuis</i>		
4. LOWER WEST COAST			
Littoral	<i>Ibla quadrivalvis</i> <i>Catomerus polymerus</i> <i>Chthamalus antennatus</i> <i>Chthamalus malayensis</i> <i>Epopella simplex</i> <i>Tetraclitella purpurascens</i> <i>Tesseropora rosea</i> <i>Tetraclita squamosa squamosa</i> <i>Elminius covertus</i> <i>Balanus amphitrite</i> <i>Balanus pallidus</i> <i>Balanus reticulatus</i> <i>Balanus variegatus</i> <i>Austromegabalanus nigrescens</i> <i>Megabalanus tintinnabulum</i>		
Neuston	<i>Lepas (Anatifa) anatifera</i> <i>Lepas (Anatifa) anserifera</i> <i>Lepas (Anatifa) australis</i> <i>Lepas (Anatifa) hillii</i> <i>Lepas (Anatifa) pectinata</i> <i>Lepas (Anatifa) testudinata</i> <i>Lepas (Dosima) fascicularis</i>		
		Sublittoral (- 200 m)	<i>Smilium peronii</i> <i>Conchoderma auritum</i> <i>Conchoderma virgatum</i> <i>Poecilasma kaempferi</i> <i>Chelonibia testudinaria</i> <i>Coronula diadema</i> <i>Solidobalanus auricoma</i>
			5. SOUTH-WEST COAST
		Littoral	<i>Ibla quadrivalvis</i> <i>Epopella simplex</i> <i>Tetraclitella purpurascens</i> <i>Elminius covertus</i> <i>Elminius modestus</i> <i>Balanus amphitrite</i> <i>Balanus pallidus</i> <i>Balanus variegatus</i> <i>Austromegabalanus nigrescens</i>
		Neuston	<i>Lepas (Anatifa) anatifera</i> <i>Lepas (Anatifa) anserifera</i> <i>Lepas (Anatifa) australis</i> <i>Lepas (Anatifa) hillii</i> <i>Lepas (Anatifa) pectinata</i> <i>Lepas (Anatifa) testudinata</i> <i>Lepas (Dosima) fascicularis</i>
		Sublittoral (- 200 m)	<i>Smilium peronii</i> <i>Conchoderma auritum</i> <i>Conchoderma virgatum</i> <i>Poecilasma kaempferi</i> <i>Chelonibia testudinaria</i> <i>Coronula diadema</i> <i>Solidobalanus auricoma</i>

	<i>Solidobalanus compressus</i>	Neuston	<i>Lepas (Anatifa) anatifera</i>
	<i>Balanus amphitrite</i>		<i>Lepas (Anatifa) anserifera</i>
	<i>Austromegabalanus nigrescens</i>		<i>Lepas (Anatifa) australis</i>
	<i>Acasta dofleini</i>		<i>Lepas (Anatifa) hillii</i>
	<i>Acasta spongites</i>		<i>Lepas (Anatifa) pectinata</i>
Deep (200 m +)	<i>Poecilasma kaempferi</i>		<i>Lepas (Dosima) fascicularis</i>
	<i>Solidobalanus auricoma</i>	Sublittoral (- 200 m)	<i>Smilium peronii</i>
6. GREAT AUSTRALIAN BIGHT			
Littoral	<i>Ibla quadrivalvis</i>		<i>Paralepas georgei</i>
	<i>Catomerus polymerus</i>		<i>Ibla idiotica</i>
	<i>Chthamalus antennatus</i>		<i>Conchoderma auritum</i>
	<i>Tetraclitella purpurascens</i>		<i>Alepas pacifica</i>
	<i>Elminius covertus</i>		<i>Oxynaspis indica</i>
	<i>Elminius modestus</i>		<i>Poecilasma kaempferi</i>
	<i>Balanus amphitrite</i>		<i>Pachylasma scutistriata</i>
	<i>Balanus variegatus</i>		<i>Cetopirus complanatus</i>
	<i>Austromegabalanus nigrescens</i>		<i>Coronula diadema</i>
Neuston	<i>Lepas (Anatifa) australis</i>		<i>Solidobalanus auricoma</i>
Sublittoral (- 200 m)	<i>Paralepas georgei</i>		<i>Acasta pectinipes</i>
	<i>Conchoderma virgatum</i>		<i>Balanus amphitrite</i>
	<i>Poecilasma kaempferi</i>		<i>Balanus trigonus</i>
	<i>Pachylasma scutistriata</i>		<i>Austromegabalanus nigrescens</i>
	<i>Acasta glans</i>		<i>Megabalanus tintinnabulum</i>
	<i>Acasta sulcata</i>		<i>Weltneria hirsuta</i>
	<i>Austromegabalanus nigrescens</i>	Deep (200 m +)	<i>Smilium sinense</i>
Deep (200 m +)	<i>Poecilasma kaempferi</i>		<i>Arcoscalpellum pertosum</i>
	<i>Pachylasma scutistriata</i>		<i>Paralepas dannevi</i>
7. SOUTH GULFS COAST			
Littoral	<i>Ibla quadrivalvis</i>		<i>Oxynaspis indica</i>
	<i>Chthamalus antennatus</i>		<i>Megalasma (Glyptelasma) hamatum</i>
	<i>Epopella simplex</i>		<i>Poecilasma kaempferi</i>
	<i>Tetraclitella purpurascens</i>		<i>Octolasmis aymonini</i>
	<i>Elminius adalaidae</i>		<i>Octolasmis indubia</i>
	<i>Elminius covertus</i>		<i>Pachylasma scutistriata</i>
	<i>Balanus amphitrite</i>		<i>Hexelasma alearum</i>
	<i>Balanus variegatus</i>		<i>Solidobalanus auricoma</i>
	<i>Austromegabalanus nigrescens</i>		<i>Altiverruca navicula</i>
Sublittoral (- 200 m)	<i>Balanus amphitrite</i>		<i>Metaverruca sculpta</i>
	<i>Austromegabalanus nigrescens</i>	9. TASMANIAN COAST	
	<i>Lithoglyptes habeii</i>	Littoral	<i>Ibla quadrivalvis</i>
8. BASS STRAIT			
Littoral	<i>Ibla quadrivalvis</i>		<i>Catomerus polymerus</i>
	<i>Catomerus polymerus</i>		<i>Chthamalus antennatus</i>
	<i>Chthamalus antennatus</i>		<i>Chamaesipho tasmanica</i>
	<i>Chamaesipho tasmanica</i>		<i>Epopella simplex</i>
	<i>Epopella simplex</i>		<i>Tetraclitella purpurascens</i>
	<i>Tetraclitella purpurascens</i>		<i>Elminius covertus</i>
	<i>Tesseropora rosea</i>		<i>Elminius modestus</i>
	<i>Elminius covertus</i>		<i>Balanus amphitrite</i>
	<i>Elminius modestus</i>		<i>Austromegabalanus nigrescens</i>
	<i>Balanus amphitrite</i>	Neuston	<i>Lepas (Anatifa) anatifera</i>
	<i>Balanus variegatus</i>		<i>Lepas (Anatifa) anserifera</i>
	<i>Austromegabalanus nigrescens</i>		<i>Lepas (Anatifa) australis</i>
	<i>Megabalanus tintinnabulum</i>		<i>Lepas (Anatifa) hillii</i>
			<i>Lepas (Anatifa) testudinata</i>
		Sublittoral (- 200 m)	<i>Smilium peronii</i>
			<i>Conchoderma auritum</i>
			<i>Alepas pacifica</i>
			<i>Poecilasma kaempferi</i>
			<i>Octolasmis lowei</i>

	<i>Octolasmis neptuni neptuni</i>		<i>Cetopirus complanatus</i>
	<i>Pachylasma scutistriata</i>		<i>Coronula diadema</i>
	<i>Cetopirus complanatus</i>		<i>Platylepas decorata</i>
	<i>Coronula diadema</i>		<i>Platylepas hexastylus</i>
	<i>Platylepas coriacea</i>		<i>Xenobalanus globicipitis</i>
	<i>Balanus amphitrite</i>		<i>Chirona (Striatobalanus) amaryllis</i>
	<i>Balanus trigonus</i>		<i>Solidobalanus auricoma</i>
	<i>Austromegabalanus nigrescens</i>		<i>Acasta cyathus</i>
Deep	<i>Poecilasma kaempferi</i>		<i>Acasta glans</i>
(200 m +)	<i>Octolasmis lowei</i>		<i>Acasta sulcata</i>
	<i>Pachylasma scutistriata</i>		<i>Balanus albicostatus</i>
			<i>Balanus amphitrite</i>
			<i>Balanus trigonus</i>
10. LOWER EAST COAST			<i>Notomegabalanus algicola</i>
Littoral	<i>Ibla quadrivalvis</i>		<i>Austromegabalanus nigrescens</i>
	<i>Catomerus polymerus</i>		<i>Megabalanus rosa</i>
	<i>Chthamalus antennatus</i>		<i>Megabalanus tintinnabulum</i>
	<i>Chamaesipho tasmanica</i>		<i>Megabalanus volcano</i>
	<i>Austrobalanus imperator</i>		<i>Weltneria aapta</i>
	<i>Epopella simplex</i>		<i>Lithoglyptes habeii</i>
	<i>Tetraclitella purpurascens</i>		<i>Kochlorine anchorella</i>
	<i>Tesseropora rosea</i>	Deep	<i>Heteralepas japonica</i>
	<i>Elminius covertus</i>	(200 m +)	<i>Paralepas minuta</i>
	<i>Elminius modestus</i>		<i>Paralepas pedunculata</i>
	<i>Hexaminius foliorum</i>		<i>Megalasma (Megalasma) striatum</i>
	<i>Hexaminius popeiana</i>		<i>Poecilasma kaempferi</i>
	<i>Balanus amphitrite</i>		<i>Octolasmis orthogonia</i>
	<i>Balanus variegatus</i>		<i>Pachylasma aurantiacum</i>
	<i>Austromegabalanus nigrescens</i>		<i>Chirona (Striatobalanus) amaryllis</i>
	<i>Megabalanus rosa</i>		<i>Solidobalanus auricoma</i>
	<i>Megabalanus tintinnabulum</i>		<i>Altiverruca navicula</i>
	<i>Megabalanus volcano</i>		<i>Metaverruca sculpta</i>
	<i>Lithoglyptes spinatus</i>		<i>Weltneria aapta</i>
Neuston	<i>Lepas (Anatifa) anatifera</i>		
	<i>Lepas (Anatifa) anserifera</i>		
	<i>Lepas (Anatifa) australis</i>		
	<i>Lepas (Anatifa) hillii</i>		
	<i>Lepas (Anatifa) pectinata</i>		
	<i>Lepas (Dosima) fascicularis</i>		
Sublittoral	<i>Lithotrya nicobarica</i>		
(- 200 m)	<i>Smilium peronii</i>		
	<i>Heteralepas dubia</i>		
	<i>Heteralepas japonica</i>		
	<i>Paralepas minuta</i>		
	<i>Paralepas palinura urea</i>		
	<i>Paralepas pedunculata</i>		
	<i>Paralepas quadrata</i>		
	<i>Conchoderma auritum</i>		
	<i>Conchoderma virgatum</i>		
	<i>Alepas pacifica</i>		
	<i>Megalasma (Megalasma) striatum</i>		
	<i>Poecilasma kaempferi</i>		
	<i>Octolasmis clubii</i>		
	<i>Octolasmis lowei</i>		
	<i>Octolasmis neptuni neptuni</i>		
	<i>Octolasmis orthogonia</i>		
	<i>Octolasmis warwicki</i>		
	<i>Temnaspis fissum</i>		
	<i>Temnaspis kilepoae</i>		
	<i>Pachylasma aurantiacum</i>		
	<i>Chelonibia patula</i>		
		11. CENTRAL EAST COAST	
		Littoral	<i>Paralepas scyllarusi</i>
			<i>Ibla quadrivalvis</i>
			<i>Chthamalus antennatus</i>
			<i>Chthamalus malayensis</i>
			<i>Chamaesipho tasmanica</i>
			<i>Austrobalanus imperator</i>
			<i>Tetraclitella purpurascens</i>
			<i>Tesseropora rosea</i>
			<i>Elminius covertus</i>
			<i>Balanus amphitrite</i>
			<i>Balanus variegatus</i>
			<i>Austromegabalanus nigrescens</i>
		Neuston	<i>Lepas (Anatifa) anatifera</i>
			<i>Lepas (Anatifa) anserifera</i>
			<i>Lepas (Anatifa) pectinata</i>
		Sublittoral	<i>Smilium peronii</i>
		(- 200 m)	<i>Heteralepas japonica</i>
			<i>Paralepas tuberosa</i>
			<i>Conchoderma auritum</i>
			<i>Conchoderma virgatum</i>
			<i>Alepas pacifica</i>
			<i>Octolasmis cor</i>
			<i>Octolasmis hoeki</i>
			<i>Octolasmis neptuni neptuni</i>
			<i>Octolasmis scuticosta</i>

Chelonibia patula
Coronula diadema
Cylindrolepas darwiniana
Platylepas coriacea
Platylepas decorata
Platylepas hexastylus
Stephanolepas muricata
Stomatolepas dermochelys
Stomatolepas praegustator
Tubicinella cheloniae
Chirona (Striatobalanus) amaryllis
Solidobalanus ciliatus
Acasta glans
Acasta pectinipes
Acasta sulcata
Conopea calceola
Balanus amphitrite
Balanus trigonus
Austromegabalanus nigrescens
 Deep
 (200 m +) *Heteralepas adiposa*
Heteralepas japonica
Octolasmis geryonophila geryonophila
Chirona (Striatobalanus) amaryllis

12. NORTH-EAST COAST

Littoral *Paralepas scyllarusi*
Ibla cumingi
Octomeris brunnea
Octomeris intermedia
Euraphia caudata
Euraphia withersi
Chthamalus antennatus
Chthamalus malayensis
Austrobalanus imperator
Tetraclitella divisa
Tetraclitella multicostata
Tetraclitella purpurascens
Tesseropora rosea
Tetraclita coerulescens
Tetraclita squamosa squamosa
Tetraclita vitiata
Elminius covertus
Hexaminius popeiana
Balanus amphitrite
Balanus reticulatus
Balanus variegatus
Austromegabalanus nigrescens
Megabalanus tintinnabulum
 Neuston *Lepas (Anatifa) anatifera*
Lepas (Anatifa) anserifera
Lepas (Anatifa) hillii
 Sublittoral
 (- 200 m) *Heteralepas cornuta*
Oxynaspis indica
Poecilasma kaempferi
Octolasmis cor
Octolasmis neptuni neptuni
Octolasmis warwicki
Temnaspis tridens asymmetrica
Chelonibia caretta

Chelonibia testudinaria
Platylepas hexastylus
Stephanolepas muricata
Stomatolepas dermochelys
Stomatolepas praegustator
Tubicinella cheloniae
Tetraclita squamosa squamosa
Chirona (Striatobalanus) amaryllis
Chirona (Striatobalanus) tenuis
Solidobalanus solidus
Acasta dofleini
Acasta purpurata
Conopea calceola
Cantellius acutum
Balanus amphitrite
Balanus reticulatus
Balanus trigonus
Austromegabalanus nigrescens
Megabalanus tintinnabulum
Lithoglyptes habeii
Kochlorine anchorella
 Deep
 (200 m +) *Anguloscalpellum pedunculatum*
Heteralepas cornuta
Oxynaspis indica
Poecilasma kaempferi
Temnaspis tridens asymmetrica
Temnaspis bathynomi
Chirona (Striatobalanus) amaryllis
Chirona (Striatobalanus) tenuis
Solidobalanus solidus

13. GREAT BARRIER REEF

Littoral *Lithotrya valentiana*
Ibla cumingi
Euraphia caudata
Chthamalus malayensis
Tetraclitella purpurascens
Tetraclita squamosa squamosa
Tetraclita vitiata
Lithoglyptes spinatus
 Neuston *Lepas (Anatifa) anatifera*
Lepas (Anatifa) anserifera
Lepas (Anatifa) hillii
 Sublittoral
 (- 200 m) *Conchoderma auritum*
Conchoderma virgatum
Conchoderma virgatum chelonophilum
Chelonibia caretta
Chelonibia testudinaria
Platylepas decorata
Platylepas hexastylus
Stephanolepas muricata
Stomatolepas praegustator
Stomatolepas transversa
Xenobalanus globicipitis
Tetraclita squamosa squamosa
Armatobalanus allium
Cantellius acutum
Cantellius gregarius
Cantellius pallidus

Cantellius secundus
Cantellius septimus
Savignium crenatum
Savignium dentatum
Savignium elongatum
Savignium milleporum
Creusia spinulosa
Nobia projectum
Megabalanus ajax
Weltneria reticulata
Lithoglyptes scamborachis
Kochlorine anchorella
Berndtia fossata
Cryptophialus heterodontus
Cryptophialus lanceolatus
Cryptophialus wainwrighti

14. GULF OF CARPENTARIA

Littoral *Euraphia withersi*
Chihamalus malayensis
Tetraclita squamosa squamosa
Balanus reticulatus

Sublittoral (- 200 m) *Poecilasma kaempferi*
Chelonibia patula
Chelonibia testudinaria
Tetraclita squamosa squamosa
Chirona (Striatobalanus) amaryllis
Balanus reticulatus

Deep (200 m +) *Poecilasma kaempferi*
Chirona (Striatobalanus) amaryllis

15. NORTH-WEST OCEANIC

Sublittoral (- 200 m) *Scalpellum stearnsi*
Litoscalpellum nipponense
Arcoscalpellum michelottianum
Trilasmis (Poecilasma) eburnea
Megalasma (Megalasma) striatum
Megalasma (Glyptelasma) gigas
Poecilasma kaempferi
Octolasmis orthogonia
Chirona (Striatobalanus) amaryllis

Deep (200 m +) *Scalpellum stearnsi*
Litoscalpellum juddi
Litoscalpellum nipponense
Arcoscalpellum michelottianum
Trilasmis (Poecilasma) eburnea
Megalasma (Megalasma) striatum
Megalasma (Glyptelasma) gigas
Megalasma (Glyptelasma) orientale
Poecilasma kaempferi
Octolasmis hawaiiense
Octolasmis orthogonia
Temnaspis bathynomi
Chirona (Striatobalanus) amaryllis

16. WEST OCEANIC

Neuston *Lepas (Anatifa) anatifera*
Lepas (Anatifa) anserifera

Sublittoral (- 200 m) *Oxynaspis indica*
Octolasmis orthogonia

Deep (200 m +) *Oxynaspis indica*
Octolasmis orthogonia

17. SOUTH OCEANIC

Neuston *Lepas (Anatifa) anatifera*
Lepas (Anatifa) anserifera
Lepas (Anatifa) australis

Sublittoral (- 200 m) *Litoscalpellum nipponense*
Hexelasma nolearia

Deep (200 m +) *Litoscalpellum nipponense*
Verum candidum
Trianguloscalpellum regium regium
Arcoscalpellum inum
Hexelasma nolearia

18. SOUTH-EAST OCEANIC

Littoral *Tesseropora wireni*

Neuston *Lepas (Anatifa) anatifera*
Lepas (Anatifa) anserifera
Lepas (Anatifa) australis
Lepas (Anatifa) pectinata
Lepas (Anatifa) testudinata
Lepas (Dosima) fascicularis

Sublittoral (- 200 m) *Amigdoscalpellum costellatum*
Paralepas intermedia
Paralepas morula
Ibla pygmaea
Conchoderma virgatum
Oxynaspis indica
Megalasma (Megalasma) striatum
Poecilasma kaempferi
Octolasmis orthogonia
Temnaspis fissum
Chirona (Striatobalanus) amaryllis
Solidobalanus auricoma
Cantellius euspinulosum
Cantellius pallidus
Cantellius secundus
Cantellius septimus

Deep (200 m +) *Litoscalpellum giganteum*
Litoscalpellum intermedium
Planoscalpellum planum
Verum novaezelandiae
Amigdoscalpellum costellatum
Trianguloscalpellum regium regium
Arcoscalpellum gryllum
Heteralepas utinomii
Paralepas dannevigii
Paralepas intermedia
Paralepas morula
Ibla pygmaea
Oxynaspis indica
Megalasma (Megalasma) striatum
Megalasma (Glyptelasma) gracile
Megalasma (Glyptelasma) orientale

Poecilasma kaempferi
Octolasmis orthogonia
Chirona (Striatobalanus) amaryllis
Solidobalanus auricoma

19. NORTH-EAST OCEANIC

Neuston *Lepas (Anatifa) anatifera*
 Lepas (Anatifa) anserifera

Sublittoral *Arcoscalpellum michelottianum*
 (- 200 m) *Paralepas pedunculata*
 Conchoderma auritum
 Pachylasma japonicum
 Chelonibia caretta
 Chirona (Striatobalanus) amaryllis
 Chirona (Striatobalanus) tenuis

Deep *Alcockanium alcockanium*
 (200 m +) *Annandaleum lambda*
 Verum australicum

Anguloscalpellum pedunculatum
Amigdoscalpellum daschae
Amigdoscalpellum elegans
Trianguloscalpellum hirsutum
Arcoscalpellum dubium
Arcoscalpellum michelottianum
Arcoscalpellum moluccanum
Arcoscalpellum truncatum
Paralepas pedunculata
Megalasma (Glyptelasma) gracile
Temnaspis bathynomi
Pachylasma japonicum
Chirona (Striatobalanus) amaryllis
Chirona (Striatobalanus) tenuis
Altiverruca conchula
Altiverruca gibbosa
Altiverruca navicula
Metaverruca sculpta

References

(Taxonomic)

- Anderson, D.T., J.T. Anderson & E.A. Egan, 1988. Balanoid barnacles of the genus *Hexaminius* (Archaeobalanidae : Elminiinae) from mangroves of New South Wales, including a description of a new species. *Records of the Australian Museum* 40: 205-223.
- Annandale, N., 1906a. Natural history notes from the R.I.M.S. "Investigator", Capt. I.H. Heming, R.N. commanding. Series III, No. 12. Preliminary report on the Indian stalked barnacles. *Annals and Magazine of Natural History* 7(17): 389-400.
- Annandale, N. 1906b. Two new barnacles dredged in 1905-1906. *Annals and Magazine of Natural History* 7(18): 44-47.
- Annandale, N., 1909. An account of the Indian Cirripedia Pedunculata. Part I. Family Lepadidae (s.str.). *Memoirs of the Indian Museum* 2(2): 61-137.
- Annandale, N., 1910a. Description of a new species of *Scalpellum* from the Andaman Sea. *Records of the Indian Museum* 5(2): 115-116.
- Annandale, N., 1910b. Notes on Cirripedia Pedunculata in the collection of the University of Copenhagen. *Videnskabelige Meddelelser fra Dansk Naturhistorisk Forening i Kjobenhavn*: 211-218.
- Annandale, N., 1910c. The Indian barnacles of the subgenus *Smilium*, with remarks on the classification of the genus *Scalpellum*. *Records of the Indian Museum* 5: 145-155.
- Annandale, N., 1911. On the distribution of the different forms of the genus *Ibla*. *Records of the Indian Museum* 7: 229-230.
- Annandale, N., 1914. New and interesting pedunculate barnacles from the Indian Seas. *Records of the Indian Museum* 10: 273-280.
- Annandale, N., 1916. Barnacles from deep-sea telegraph cables in the Malay Archipelago. *Journal of the Straits Branch of the Royal Asiatic Society* 74: 281-302.
- Aurivillius, C.W.S., 1892. Neue Cirripeden aus dem Atlantischen, Indischen und Stillen Ocean. *Oefversigt af Kungliga Vetenskapsakademiens Forhandlingar*, Stockholm 3: 123-134.
- Aurivillius, C.W.S., 1894. Studien über Cirripeden. *Kungliga Svenska vetenskapsakademiens handlingar*, Stockholm 26(7): 5-107.
- Aurivillius, C.W.S., 1898. Cirripèdes nouveaux provenant des campagnes scientifiques de S.A.S. le Prince de Monaco. *Bulletin de la Société Zoologique de France* 23: 189-198.
- Barnard, K.H., 1924. Contributions to the crustacean fauna of South Africa. No. 7 Cirripedia. *Annals of the South African Museum* 20(1): 1-103.
- Batham, E.J., 1945. Description of female, male and larval forms of a tiny stalked barnacle, *Ibla idiotica*. *Transactions of the Royal Society of New Zealand* 75: 347-356.
- Bayliss, D.E., 1988. A new intertidal barnacle of the genus *Elminius* (Cirripedia: Thoracica) from South Australia. *Transactions of the Royal Society of South Australia* 112(2): 75-79.
- Berndt, W., 1907. Über das System der Acrothoracica. *Archiv für Naturgeschichte Jahrgang* 73(1): 287-289.
- Broch, H., 1916. Results of Dr. E. Mjöberg's Swedish Scientific Expeditions to Australia 1910-1913, No. VIII. Cirripeden. *Kungliga Svenska vetenskapsakademiens handlingar* 52(8): 1-16.
- Broch, H., 1922. Papers from Dr. Th. Mortensen's Pacific Expedition 1914 - 1916. No. X. Studies on Pacific cirripeds. *Videnskabelige Meddelelser fra Dansk Naturhistorisk Forening i Kjobenhavn* 73: 215-358.
- Broch, H., 1931. Papers from Dr. Th. Mortensen's Pacific Expedition 1914 - 1916. LVI. Indomalayan Cirripedia. *Videnskabelige Meddelelser fra Dansk Naturhistorisk Forening i Kjobenhavn* 91: 1-146.
- Broch, H., 1947. Cirripedes from Indo-Chinese shallow-waters. *Avhandlingar Norske videnskapsakademi i Oslo* 7: 3-32.
- Bruguière, M. (1789-1791). *Encyclopédie méthodique: Histoire naturelle des vers*. 1(1): *Anatifa* pp. 60-67; *Balanus* pp. 158-173 (published 1792).
- Buckeridge, J.S., 1983. The barnacle subfamily

- Elminiinae - two new subgenera and a new Miocene species from Victoria. *Journal of the Royal Society of New Zealand* 12(4): 353-357.
- Calman, W.T., 1918. On barnacles of the genus *Scalpellum* from deep-sea telegraph cables. *Annals and Magazine of Natural History* 9(1): 94-124.
- Calman, W.T., 1919. On barnacles of the genus *Megalasma* from deep-sea telegraph cables. *Annals and Magazine of Natural History* 9(4): 361-374.
- Cannon, H.G., 1935. On the rock-boring barnacle *Lithotrya valentiana*. *Scientific Reports. Great Barrier Reef Expedition 1928-1929* 5(1): 1-17.
- Conrad, T.A., 1837. Descriptions of new marine shells from upper California, collected by Thomas Nuttall, Esq. *Journal of the Academy of Natural Sciences of Philadelphia, Series 1, 7(2)*: 227-268.
- Cornwall, I.E., 1924. Notes on West American whale barnacles. *Proceedings of the California Academy of Sciences, Series 4, 13(26)*: 421-431.
- Cornwall, I.E., 1927. Some North Pacific whale barnacles. *Contributions to Canadian Biology & Fisheries* 3: 503-517.
- Cuvier, G., 1817. Mémoires pour servir à l'histoire naturelle et l'anatomie des Mollusques, Article Anatifa.
- da Costa, E., 1778. *Historia naturalis testaceorum Britanniae, or the British conchology*, London. 254 pp.
- Dakin, W.J., 1987. *Australian Seashores*, 4th edition, revised I. Bennett. Angus & Robertson, Sydney. 411 pp.
- Daniel, A., 1953. Some new cirripedes from the Madras Coast. *Journal of Madras University, series B, 23(3)*: 219-226.
- Daniel, A., 1955. The Cirripedia of the Madras coast. *Bulletin of the Madras Government Museum (Natural History Society) new series, 6(2)*: 1-40.
- Daniel, A., 1970. A new pedunculate barnacle *Paralepas georgei* sp.nov. (Crustacea: Cirripedia-Thoracica) epizooic on Australian spiny lobsters and crabs. *Journal of the Royal Society of Western Australia* 53(2): 33-36.
- Darwin, C., 1851. A monograph of the subclass Cirripedia, with figures of all species. The Lepadidae: or, pedunculated cirripedes. Ray Society, London. 400 pp.
- Darwin, C., 1854. A monograph of the subclass Cirripedia with figures of all species. The Balanidae, the Verrucidae, etc. Ray Society, London. 684 p.
- Dyne, G.R. & D.W. Walton, (eds) (1987). *Fauna of Australia. General Articles*. Canberra : Australian Government Publishing Service, Volume 1A, x + 339 pp.
- Ellis, J., 1758. An account of several rare species of barnacles. *Philosophical Transactions of the Royal Society* 50(2): 845-855.
- Ellis, J. & D. Solander, 1786. The natural history of many curious and uncommon zoophytes collected from various parts of the globe. Cirripedia. pp. 197-198.
- Fabricius, O., 1798. Tillaeg-till Conchyliæ-Slaegterne Lepas, Pholas, Mya og Solen. *Skrifter af Naturhistorie Selskabet, Kjøbenhavn* 4(2): 34-51.
- Fischer, P., 1884. Cirripèdes de l'Archipel de la Nouvelle-Calédonie. *Bulletin de la Société Zoologique de France* 9: 355-360.
- Fischer, P., 1886. Description d'un nouveau genre de Cirripèdes (*Stephanolepas*) parasite des tortues marines. *Actes de la Société Linnéenne de Bordeaux* (4)10: 193-196.
- Foster, B.A., 1978. The marine fauna of New Zealand: Barnacles (Cirripedia: Thoracica). *New Zealand Oceanographic Institute Memoir* 69: 1-160.
- Foster, B.A., 1981. Cirripedes from ocean ridges north of New Zealand. *New Zealand Journal of Zoology* 8(3): 349-367.
- Foster, B.A., 1982. Two new intertidal balanoid barnacles from eastern Australia. *Proceedings of the Linnaean Society of New South Wales* 106: 21-32.
- Foster, B.A. & D.T. Anderson, 1986. New names for two well-known shore barnacles (Cirripedia, Thoracica) from Australia and New Zealand. *Journal of the Royal Society of New Zealand* 16(1): 57-69.
- Gerstaecker, A., 1866-1879. *Arthropoda. Bronn's Klassen und Ordnung. Leipzig und Heidelberg, C.F. Winter, 5*: 406-589.
- Gray, J.E., 1825. A synopsis of the genera of Cirripedes arranged in natural families, with a description of some new species. *Annals of Philosophy, n.s.* 10(2): 97-107.
- Gray, J.E., 1835. In Lyell, C. On the proofs of a gradual rising of the land in certain parts of Sweden. *Philosophical transactions of the Royal Society of London* 125: 37-38.
- Gravel, A., 1902a. Revision des Cirripèdes appartenant à la collection du Muséum d'Histoire Naturelle, Pedonculés. I. Partie systématique. *Nouvelles archives du Muséum d'histoire naturelle* 4(4): 215-312.
- Gravel, A., 1902b. Cirripèdes. Expéditions scientifiques du "Travailleur" et du "Talisman" pendant les années 1880, 1881, 1882, 1883: 1-178, Masson, Paris.
- Gravel, A., 1903. Revision des Cirripèdes appartenant à la collection du Muséum d'Histoire Naturelle (Operculés). II. Partie systématique. *Nouvelles Archives du Muséum d'Histoire Naturelle, Paris, Series 4, 5*: 95-170.
- Gravel, A., 1905. *Monographie des cirripèdes ou thécostracés*. Masson et Cie, éditeurs, Paris, 472 p.
- Gravel, A., 1907. Cirripèdes operculés de l'Indian Muséum de Calcutta. *Memoirs of the Asiatic Society of Bengal* 2: 1-10.
- Harding, J.P., 1962. Darwin's type specimens of varieties of *Balanus amphitrite*. *Bulletin of the British Museum (Natural History), Zoology* 9(7): 273-296.
- Henry, D.P., 1957. Some littoral barnacles from the Tuamotu, Marshall and Caroline Islands. *Proceedings of the United States National Museum* 107(3381): 25-38.
- Henry, D.P. & P.A. McLaughlin, 1967. A revision of the subgenus *Solidobalanus* Hoek (Cirripedia, Thoracica) including a description of a new species with complementary males. *Crustaceana* 12(1): 43-58.
- Henry, D.P. & P.A. McLaughlin, 1986. The recent species of *Megabalanus* (Cirripedia, Balanomorphia) with special emphasis on *Balanus tintinnabulum* (Linnaeus) *sensu lato*. *Zoologische Verhandelingen, Leiden* 235: 1-69.
- Hinds, R.B., 1844. *Mollusca from the voyage of "Sulphur" 1836 - 1842*. London.
- Hiro, F., 1931. Notes on some new Cirripedia from Japan. *Memoirs of the College of Science, Kyoto University series B, 7(3)*: 143-158.
- Hiro, F., 1933. Report of the Cirripedia collected by the surveying ships of the Imperial Fisheries Experimental Station on the continental shelf bordering Japan. *Record of Oceanographic Works in Japan* 5(1): 11-84.
- Hiro, F., 1935. A study of cirripeds associated with coral occurring in Tanabe Bay. *Record of Oceanographic*

- Works in Japan 7(1): 1-28.
- Hiro, F., 1936a. Report on the Cirripedia collected in the Malayan waters by the ship "Zuihomaru". Japanese Journal of Zoology 6(19): 621-636.
- Hiro, F., 1936b. Occurrence of the cirriped *Stomatolepas elegans* on a Loggerhead turtle found at Seto. Annotationes Zoologicae Japonenses 15(3): 312-320.
- Hiro, F., 1937a. Cirripeds of the Palao Islands. Palao Tropical Biological Station Studies 1: 37-72.
- Hiro, F., 1937b. Studies on cirripedian fauna of Japan. II. Cirripeds found in the vicinity of the Seto Marine Biological Laboratory. Memoirs of the College of Science, Kyoto University, Series B, 12(3) (17): 385-478.
- Hiro, F., 1937c. Order Thoracica. I. (Cirripedia, Pedunculata). Fauna Nipponica 9(1): 1-116 (Sanseido, Tokyo) (in Japanese).
- Hiro, F., 1938. Studies on animals inhabiting reef corals. II. Cirripedes of the genera *Creusia* and *Pyrgoma*. Palao Tropical Biological Station Studies 3: 391-416.
- Hiro, F., 1939a. Studies on the cirripedian fauna of Japan. III. Supplementary notes on the cirripeds found in the vicinity of Seto. Memoirs of the College of Science, Kyoto University Series B 15(2): 237-244.
- Hiro, F., 1939b. Studies on the cirripedian fauna of Japan. IV. Cirripeds of Formosa (Taiwan), with some geographical and ecological remarks on the littoral forms. Memoirs of the College of Science, Kyoto University, Series B 15(2): 245-284.
- Hiro, F., 1939c. Studies on the cirripedian fauna of Japan. V. Cirripeds of the northern part of Honsyu. Science Reports of the Tohoku University Series 4 (Biology), 15(2-3): 201-218.
- Hoek, P.P.C., 1883. Report on the Cirripedia collected by H.M.S. Challenger during the years 1873-1876. Report of the Scientific Results from the Exploratory Voyages of H.M.S. Challenger, Zoology 8(25): 1-169.
- Hoek, P.P.C., 1907. The Cirripedia of the Siboga Expedition. A. Cirripedia Pedunculata. Siboga Expeditie Monographie 31a: v-xxv, 1-127.
- Hoek, P.P.C., 1913. The Cirripedia of the Siboga Expedition. B. Cirripedia Sessilia. Siboga Expeditie Monographie 31b: i-xxv, 129-275.
- Jones, D.S., 1987. Systematics and biogeography of western Australian cirripedes (Thoracica-Lepadomorpha, Balanomorpha). Unpublished M.Sc. thesis, Zoology Department, University of Western Australia, 650 pp.
- Jones, D.S., 1990. The shallow-water barnacles of southern Western Australia. In F.E. Wells, D.I. Walker, H. Kirkman & R. Lethbridge (eds). Proceedings of the Third International Marine Biological Workshop: The Marine Flora and Fauna of Albany, Western Australia. Western Australian Museum Press, Perth. (in press).
- Krauss, F., 1848. Die sudafrikanischen Mollusken. Ein Beitrag zur Kenntnis der Mollusken des Kap- und Natal-landes und zur geographischen Verbreitung derselben, mit Beschreibung und Abbildung der neuen Arten. (Stuttgart).
- Krüger, P., 1911a. Beiträge zur Cirripedenfauna Ostasiens. Beiträge zur Naturgeschichte Ostasiens herausgegeben von F. Doflein. Kongelige Bayerische Akademie der Wissenschaften, Munich Mathematische-physikalische Klasse, Abhandlungen Supplement- Band 2(6): 1-72.
- Krüger, P., 1911b. Zur Cirripedenfauna Ostasiens. Zoologischer Anzeiger 38(20/21): 459-464.
- Krüger, P., 1914. Cirripeden. pp. 427-441. In W. Michaelson & E. Hartmeyer (eds). Die Fauna Südwest-Australiens 4. Fisher, Jena.
- Lamarck, J.B.P.A., de M., ch. de, 1802. Memoire sur la Tubicinelle. Archives du Museum d'Histoire Naturelle, Paris 1: 461-464.
- Lamarck, J.B.P.A., de M., ch. de, 1818. Histoire naturelle des animaux sans vertèbres. Volume 5, 612 p. (Deterville, Paris).
- Lanchester, W.F., 1902. On the Crustacea collected during the "Skeat-Expedition" to the Malay Peninsula. Proceedings of the Zoological Society of London 2(3): 363-381.
- Leach, W.E., 1817. Distribution systematique de la class Cirripèdes. Journal de Physique, de Chimie et d'Histoire Naturelle, Paris 85: 67-69.
- Leach, W.E., 1818. Narrative of an Expedition to explore the river Zaire, usually called the Congo...in 1816. To which is added the journal of Prof. (C.) Smith....and an appendix containing the natural history..... Tuckey's Congo Expedition 498 p. London.
- Leach, W.E., 1825. A tabular view of the genera composing the Class Cirripedes, with descriptions of the species of *Otion*, *Cineras* and *Clypra*. Zoological Journal, London 2(6): 208-215.
- Lessona, C. & C. Tapparone-Canefri, 1874. Nota sulla *Macrocheira kaempferi* sibe. e. sopra una nuova sp. del gen. *Dichelaspis*. Atti dell'Accademia delle scienze, Torino 9(2): 185-194.
- Lewis, J.A., 1985. A re-examination of *Balanus variegatus* Darwin (Cirripedia, Thoracica) from southern Australia. Crustaceana 48(2): 117-132.
- Linnaeus, C., 1758. Systema Naturae. Holmiae. Editio Decima, Reformata, Volume 1 824 p.
- Linnaeus, C., 1767. Systema naturae per regna tria naturae - editio duodecima, reformata. Holmiae. 1(2): 533-1327.
- MacDonald, J.D., 1869. On an apparently new genus of minute parasitic cirripede, between *Lepas* and *Dichelaspis*. Proceedings of the Zoological Society of London 1869: 440-444.
- McLaughlin, P.A. & D.P. Henry, 1972. Comparative morphology of complementary males in four species of *Balanus* (Cirripedia Thoracica). Crustaceana 22(1): 13-30.
- Memmi, M., 1982. Revision of the species *Lepas anatifera* (Crustacea: Cirripedia). Zoologicheskij Zhurnal 59: 1165-1170.
- Monroe, R., 1981. Studies on the Coronulidae (Cirripedia): shell morphology, growth and function, and their bearing on subfamily classification. Memoirs of the Queensland Museum 20(2): 237-251.
- Monroe, R. & C.J. Limpus, 1979. Barnacles on turtles in Queensland waters with descriptions of three new species. Memoirs of the Queensland Museum 19(3): 197-223.
- Mörch, O.A.L., 1852. Cephalophora Catalogus Conchyliorum: 65-68 (Cirripedia).
- Newman, W.A., 1960. Five pedunculate cirripedes from the West Pacific, including two new forms. Crustaceana 1(1): 100-116.
- Newman, W.A., 1961. On certain littoral species of *Octolasmis* (Cirripedia, Thoracica) symbiotic with decapod Crustacea from Australia, Hawaii and Japan. Veliger 4(2): 99-107.

- Newman, W.A., 1967. Shallow-water versus deep-sea *Octolasmis* (Cirripedia, Thoracica). *Crustaceana* 12(1): 13-32.
- Newman, W.A., 1973. An oxynaspid (Cirripedia, Thoracica) from the eastern Pacific. *Crustaceana* 23: 202-208.
- Newman, W.A., 1979. On the biogeography of balanomorph barnacles of the southern ocean including two new balanid taxa: a subfamily, two genera and three species. *New Zealand Department of Science and Industrial Research Information Service* 137(1): 279-306.
- Newman, W.A. & A. Ross, 1971. Antarctic Cirripedia. Antarctic Research Series Volume 14, American Geophysical Union, 257 p.
- Newman, W.A. & A. Ross, 1976. Revision of the balanomorph barnacles, including a catalog of the species. *San Diego Society of Natural History Memoir* 9: 1-108.
- Nilsson-Cantell, C.A., 1921. Cirripeden-Studien. Zur Kenntnis der Biologie, Anatomie und Systematik dieser Gruppe. *Zoologiska bidrag fran Uppsala* 7: 75-395.
- Nilsson-Cantell, C.A., 1925. Neue und wenig bekannte Cirripeden aus den Museen zu Stockholm und zu Uppsala. *Arkiv for Zoologi* 18A(3): 1-46.
- Nilsson-Cantell, C.A., 1927. Some barnacles in the British Museum (Natural History). *Proceedings of the Zoological Society of London* 1927(3): 743-790.
- Nilsson-Cantell, C.A., 1928. Studies on cirripedes in the British Museum (Natural History). *Annals and Magazine of Natural History*, series 10, 2(7): 1-39.
- Nilsson-Cantell, C.A., 1929. Cirripeden des genus *Verruca* der Deutschen Tiefsee-Expedition au dem Dampfer "Valdivia", 1898-1899. *Zoologische Jahrbucher (Abteilung fur Systematik, Okologie und Geographie der Tier)* 58: 459-480.
- Nilsson-Cantell, C.A., 1930a. Diagnoses of some new Cirripedes from the Netherlands Indies collected by the Expedition of His Royal Highness the Prince Leopold of Belgium in 1929. *Bulletin du Musée Royal D'Histoire Naturelle de Belgique* 6(4): 1-2.
- Nilsson-Cantell, C.A., 1930b. Cirripedes. Résultats Scientifiques du Voyage aux Indes Orientales Néerlandaises de LL.AA.RR. le Prince et la Princesse Léopold de Belgique. *Mémoires du Musée Royal D'Histoire Naturelle de Belgique (Hors série)* 3(3): 1-24.
- Nilsson-Cantell, C.A., 1932. Cirripeden aus Japan. *Arkiv for Zoologi, Stockholm, Band 24A, No.4*: 1-30.
- Nilsson-Cantell, C.A., 1934. Indo-Malayan cirripedes in the Raffles Museum, Singapore. *Bulletin of the Raffles Museum* 9: 42-73.
- Nilsson-Cantell, C.A., 1938. Cirripedes from the Indian Ocean in the collection of the Indian Museum, Calcutta. *Memoirs of the Indian Museum* 13(1): 1-81.
- Noll, F.C., 1872a. Mitheilung von Dr. F.C. Noll. Bericht Uber die Senckenbergische naturforschende Gesellschaft 1871-1872, 3: 21-26.
- Noll, F.C., 1872b. *Kochlorine hamata* N., ein bohrender Cirripede. Bericht über die Senckenbergische naturforschende Gesellschaft 1871-72, 4: 50-58.
- Olfers, J.F., 1814. Der Gesellschaft naturforschender Freunde zu Berlin, *Magazin fur die neuesten Entdeckunge in der gesammten Naturkunde, Jahrgang VIII, drittes Quartal*, 1814: 177.
- Phillipi, R.A., 1836. Cirripedia. In, *Enumeratio Molluscorum Siciliae viventium in tellure tertiaria fossilium quae in itinere suo observavit. Berolini*, 267 pp.
- Pilsbry, H.A., 1890. Description of a new Japanese Scalpellum. *Proceedings of the Academy of Natural Science, Philadelphia* 42: 442-443.
- Pilsbry, H.A., 1907a. Hawaiian Cirripedia. *Bulletin of the Bureau of Fisheries, Washington* 26: 181-190.
- Pilsbry, H.A., 1907b. The barnacles (Cirripedia) contained in the collection of the United States National Museum. *Bulletin of the United States National Museum* 60: 1-122.
- Pilsbry, H.A., 1910. *Stomatolepas*, a barnacle commensal in the throat of the Loggerhead turtle. *American Naturalist* 44: 304-306.
- Pilsbry, H.A., 1912. Diagnosis of new barnacles from the Philippine Archipelago and China Sea. *Proceedings of the United States National Museum* 42(1902): 291-294.
- Pilsbry, H.A. 1916. The sessile barnacles (Cirripedia) contained in the collections of the United States National Museum; including a monograph of the American species. *Bulletin of the United States National Museum* 93: 1-366.
- Poli, G.S., 1795. Testacea utriusque Siciliae eorumque historia et anatome. Tom 2 Testacea Utriusque Siciliae 2: 75-264.
- Pope, E.C., 1945. A simplified key to the sessile barnacles found on rocks, boats, wharf piles and other installations in Port Jackson and adjacent waters. *Records of the Australian Museum* 21(6): 351-372.
- Pope, E.C., 1965. A review of Australian and some Indomalayan Chthamalidae (Crustacea, Cirripedia). *Proceedings of the Linnean Society of New South Wales* 90:10-77.
- Ranzani, C., 1817. Osservazioni su i Balanidi. *Opuscoli Scientifici* 1(4): 276.
- Ranzani, C., 1818. Osservazioni su i Balanidi. *Opuscoli Scientifici* 2(2): 63-93.
- Reinhardt, J.T., 1850. Om Slaegten Lithotryas Evne til at bore sig ind i Steenblokke. *Videnskabelige Meddelelser fra Dansk Naturhistorisk Forening i Kjobenhavn* 1: 1-8.
- Rosell, N.C., 1972. Some barnacles (Cirripedia, Thoracica) of Puerto Galera found in the vicinity of the U.P. Biological Laboratory. *National Applied Sciences Bulletin* 24:143-285.
- Ross, A., 1968. Bredin-Archbold-Smithsonian Biological Survey of Dominica. 8. The intertidal balanomorph Cirripedia. *Proceedings of the United States National Museum* 125(3665): 1-22.
- Ross, A., 1970. Studies on the Tetraclitidae (Cirripedia: Thoracica). A proposed new genus for the Austral species *Tetraclita purpurascens breviscutum*. *Transactions of the San Diego Society of Natural History* 16(1): 1-12.
- Ross, A., 1971. A new genus of Chthamalidae (Cirripedia) from the southeastern Pacific island of San Ambrosia. *Transactions of the San Diego Society of Natural History* 16(11): 265-278.
- Ross, A., 1975. *Heteralepas cornuta* (Darwin) in the eastern Pacific abyssal fauna (Cirripedia, Thoracica). *Crustaceana* 28(1): 17-20.
- Ross, A. & W.A. Newman, 1973. Revision of the coral inhabiting barnacles (Cirripedia: Balanidae). *Transactions of the San Diego Society of Natural History* 17(12): 137-174.

- Sander Rang, P.K., 1829. Manuel de l'Histoire Naturelle des Mollusques et de leurs Coquilles, ayant pour base de classification celle de M. le Baron Cuvier. Manuel des Mollusques: 1 - 390. (Paris).
- Say, T., 1822. An account of some marine shells of the United States. Journal of the Academy of Natural Sciences, Philadelphia 2(2): 221-248, 302-325.
- Schumacher, C.F., 1817. Essai d'un nouveau système des habitations des vers testacés. Copenhagen. 287 pp.
- Seguenza, G., 1873-1876. Richerchei Palaeontologiche intorno ai Cirripedi terziari della provincia de Messina. Con appendice intorno ai Cirripedi: vivienti nel Mediterraneo e sui fossili, terziari dell'Italia Meridionale. Parte I(1873); Parte II (1876). Atti della Accademia Pontaniana 10: 267-481.
- Sewell, R.B.S., 1926. A study of *Lithotrya nicobarica* Reinhardt. Records of the Indian Museum 28: 269-330.
- Southward, A.J., 1975. Intertidal and shallow water Cirripedia of the Caribbean. Studies on the Fauna of Curacao and other Caribbean Islands 46(150): 1-53.
- Sowerby, G.B. (1822-1834). The genera of recent and fossil shells, for the use of students in Conchology and Geology, with original plates by James Sowerby (Nos. i-xvii), continued by J. de C. Sowerby (Nos. xviii-xlii).
- Sowerby, G.B. II, 1839. A conchological manual. G.B. Sowerby, London. 130 pp, 530 figs.
- Spengler, L., 1790. Beskrivelse og Oplysning over den hidintil lidet udarbejdede Slaegt af mangeskallede Konchylier, som Linnaeus har daldet Lepas, med tilfojede nye og ubeskrevne Arter. (Om Conchylii-Slaegten Lepas). Skriver af Naturhistorie Selskabet 1(1): 158-212.
- Spengler, L., 1793. Beskrivelse over tvende nye Arter af Lepas. Skrifter Naturhist Selskabet 2: 103-110.
- Steenstrup, J.J.S. 1851. Videnskabelige Meddelelser fra Dansk naturhistoriske Forening i Kjobenhaven, 1851: pl.3, figs 11-15.
- Stubbings, H.G., 1936. The John Murray Expedition 1933-34 Scientific Reports, Cirripedia. British Museum (Natural History) 4(1): 1-70.
- Stubbings, H.G., 1961a. Cirripedia Thoracica from tropical West Africa. Atlantide Report 6: 7-41
- Stubbings, H.G., 1961b. Some Cirripedia from the Persian Gulf. Annals and Magazine of Natural History Series 13, 4(34): 171-176.
- Stubbings, H.G., 1963. Cirripedia of the tropical south Atlantic coast of Africa. Résultats Scientifiques, Expédition Océanographique Belge dans les Eaux Côtières Africaines de L'Atlantique Sud (1948-1949). Institut Royal des Sciences Naturelles de Belgique 3(10): 1-39.
- Stubbings, H.G., 1965. West African Cirripedia in the collections of the Institut Francais d'Afrique Noire, Dakar, Senegal. Bulletin de l'Institut Francais d'Afrique Noire, series A, 27(3): 876-907.
- Stubbings, H.G., 1967. The cirriped fauna of tropical West Africa. Bulletin of the British Museum (Natural History) Zoology, 15(6): 229-319.
- Thomson, C. Wyville, 1877. The voyage of the Challenger. The Atlantic, II; p.4, fig.2, p.7, fig. 3.
- Tomlinson, J.T., 1963. Two new acrothoracican cirripeds from Japan. Publications of the Seto Marine Biological Laboratory 11(2): 263-280.
- Tomlinson, J.T., 1969. The burrowing barnacles (Cirripedia: Order Thoracica). Publications of the United States National Museum 296: 1-162.
- Tomlinson, J.T. & W.A. Newman, 1960. *Lithoglyptes spinatus*, a burrowing barnacle from Jamaica. Proceedings of the United States National Museum 112(3445): 517-526.
- Utinomi, H., 1949. Studies on the cirripedian fauna of Japan. VI. Cirripeds from Kyusyu and Ryukyu Islands. Publications of the Seto Marine Biological Laboratory 1(2): 19-37.
- Utinomi, H., 1950. A new remarkable coral-boring acrothoracican cirriped. Memoirs of the College of Science, Kyoto University, Series B, 19(3, 18): 83-89.
- Utinomi, H., 1958. Studies on the cirripedian fauna of Japan. VII. Cirripeds from Sagami Bay. Publications of the Seto Marine Biological Laboratory 6(3): 281-311.
- Utinomi, H., 1962. Studies on the cirripedian fauna of Japan. VIII. Thoracic cirripeds from western Kyusyu. Publications of the Seto Marine Biological Laboratory 10(2): 211-239.
- Utinomi, H., 1967a. Occurrence of a new pedunculate cirripede on a small Spanish lobster *Scyllarus bicuspidatus* (de Man) from Kamae Bay, northeastern Kyusyu. Publications of the Seto Marine Biological Laboratory 15(2): 117-120.
- Utinomi, H., 1967b. Comments on some new and already known cirripeds with emended taxa, with special reference to the parietal structure. Publications of the Seto Marine Biological Laboratory 15(3): 199-237.
- Utinomi, H., 1968a. A revision of the deep sea barnacles *Pachylasma* and *Hexelasma* from Japan, with a proposal of new classification of the Chthamalidae (Cirripedia, Thoracica). Publications of the Seto Marine Biological Laboratory 16(1): 21-39.
- Utinomi, H., 1968b. Pelagic, shelf and shallow water Cirripedia from the Indo-West Pacific. Videnskabelige Meddelelser fra Dansk naturhistorisk Forening 131: 161-186.
- Utinomi, H., 1969. Cirripedia of the Iranian Gulf. Videnskabelige Meddelelser fra Dansk naturhistorisk Forening 132: 79-94.
- Utinomi, H., 1970. Studies on the cirripedian fauna of Japan. IX. Distributional survey of thoracic cirripeds in the southeastern part of the Japan Sea. Publications of the Seto Marine Biological Laboratory 17(5): 339-372.
- Weltner, W., 1922. Cirripedia der deutschen Tiefsee-Expedition. Wissenschaftliche Ergebnisse der deutschen Tiefsee-Expedition auf dem Dampfer "Valdivia" 1895-1899, 23(2): 59-112.
- Withers, T.H., 1935. Catalogue of fossil Cirripedia in the Department of Geology of the British Museum. Vol. 2, Cretaceous. London, British Museum, 433 pp.
- Wood, W., 1815. General conchology; or a description of shells arranged according to the Linnaean system. (John Booth, London). 246 p.
- Wu, Shi-kuei, 1967. Two new records of octolasmid cirripedes from Taiwan. Crustaceana 12: 274-278.
- Yamaguchi, T., 1973. On *Megabalanus* (Cirripedia, Thoracica) of Japan. Publications of the Seto Marine Biological Laboratory 21(2): 115-140.
- Zevina, G.B., 1968. New species of Lepadomorpha (Cirripedia, Thoracica) from the Bay of Tonkin. Crustaceana 15: 35-40.
- Zevina, G.B., 1978a. A new classification of the Scalpellidae (Cirripedia, Thoracica). 1. Subfamilies Lithotryinae, Calanticinae, Pollicipinae, Scalpellinae,

- Brochiinae and Scalpellopsinae. Zoologicheskyy Zhurnal 57(7): 998-1007 (in Russian).
- Zevina, G.B., 1978b. A new classification of the Scalpellidae (Cirripedia, Thoracica). 2. Subfamilies Arcoscalpellinae and Meroscalpellinae. Zoologicheskyy Zhurnal 57(9): 1343-1352. (in Russian).
- Zevina, G.B., 1981a. Cirripede crustaceans of the suborder Lepadomorpha (Cirripedia, Thoracica) of the World Oceans. Part I. Family Scalpellidae. Opredeliteli fauna SSSR. Number 127: 1-398 (in Russian).
- Zevina, G.B., 1981b. Deep-sea Cirripedia of the Australian and New Zealand waters. Trudy Institute of Oceanology 115: 76-93 (in Russian).
- Zevina, G.B., 1982. Barnacles of the suborder Lepadomorpha of the World Oceans. Part 2. Opredeliteli fauna SSSR Number 133: 1-223.
- Zevina, G.B., 1987. Deep-sea Verrucomorpha (Cirripedia, Thoracica) of the Pacific. 1. The North Pacific. Zoologicheskyy Zhurnal 66: 1812-1821.
- Zullo, V.A., 1963. A review of the subgenus *Armatobalanus* Hoek. (Cirripedia: Thoracica) with the description of a new species from the Californian coast. Annals and Magazine of Natural History, Series 13, 6: 587-594.
- Zullo, V.A. & W.A. Newman, 1964. Thoracic Cirripedia from a southeast Pacific guyot. Pacific Science 18(4): 355-372.
- Zullo, V.A. & J.D. Standing, 1983. Sponge inhabiting barnacles (Cirripedia: Archaeobalanidae) of the Carolinian province, southeastern United States, with the description of a new *Membranobalanus* Pilsbry. Proceedings of the Biological Society of Washington 96: 468-477.

Accepted 19 October 1989

Appendix A

Australian contributions to the biology of Australian cirripedes.

General and Comparative

- Anderson & Southward, 1987 (cirral activity)
 Healy & Anderson, 1990 (sperm ultrastructure)
 Jones, 1987 (Western Australian cirripedes)

Lepadomorpha

- Calantica studeri*
 Jones, 1990c (distribution)
- Smilium peronii*
 Jones, 1990c (distribution)
- Paralepas georgei*
 Jones, 1990b (distribution)
- Paralepas quadrata*
 Jones, 1990b (distribution)
- Ibla cumingi*
 Endean, Kenny & Stephenson, 1956 (distribution)
 Pope, 1959 (general)
- Ibla quadrivalvis*
 Anderson, 1965, 1987 (embryology)
 Jones, 1990b (distribution)
 Pope, 1943 (distribution)
- Lepas anatifera*
 Jones, 1990b,c (distribution)
 MacIntyre, 1966 (growth)
- Lepas anserifera*
 Jones, 1990b,c (distribution)
- Lepas australis*
 Jones, 1990b (distribution)
- Lepas hillii*
 Jones, 1990b (distribution)
 Monroe & Limpus, 1979 (on turtles)
- Lepas pectinata*
 Anderson, 1980 (feeding)
- Lepas testudinata*
 Jones, 1990b (distribution)
- Lepas fascicularis*
 Jones, 1990b (distribution)
- Conchoderma auritum*
 Jones, 1990b,c (distribution)
 MacIntyre, 1966 (growth)
 Monroe & Limpus, 1979 (on turtles)

Conchoderma virgatum

Jones, 1990b (distribution)

Oxynaspis indica

Jones, 1990b,c (distribution)

Poecilasma kaempferi

Jones, 1990b (distribution)

Trilasmis fissus

Jones, 1990b (distribution)

Balanomorpha

Catomerus polymerus

- Anderson, 1983 (morphology, feeding)
 Bennett & Pope, 1953, 1960 (distribution)
 Dakin, Bennett & Pope, 1948 (distribution)
 Endean, Kenny & Stephenson, 1956 (distribution)
 Egan & Anderson, 1989 (larval development)
 Pope, 1945 (systematics); 1965 (systematics; distribution)
 Wisely & Blick, 1964 (breeding)
 Womersley & Edmonds, 1958 (distribution)

Octomeris brunnea

Pope, 1965 (systematics; distribution)

Euraphia withersi

Pope, 1965 (systematics; distribution)

Chthamalus antennatus

- Anderson, 1969 (embryology)
 Bennett & Pope, 1953, 1960 (distribution)
 Egan & Anderson, 1989 (larval development)
 Pope, 1943 (distribution); 1945 (systematics)
 Pope, 1965 (systematics; distribution)
 Wisely & Blick, 1964 (breeding)
 Womersley & Edmonds, 1958 (distribution)

Chthamalus malayensis

- Endean, Kenny & Stephenson, 1956 (distribution)
 Endean, Stephenson & Kenny, 1956 (distribution)
 Jones, 1990b,c (distribution)
 Pope, 1965 (systematics; distribution)

Chamaesipho tasmanica

- Anderson, 1969 (embryology)
 Bennett & Pope, 1953 (distribution)
 Dakin, Bennett & Pope, 1948 (distribution)

- Denley & Underwood, 1979 (ecology)
 Foster & Anderson, 1986 (systematics)
 Endean, Stephenson & Kenny, 1956 (distribution)
 Pope, 1945 (systematics); 1965 (systematics; distribution)
 Underwood, 1981 (ecology)
 Underwood, Denley & Moran, 1983 (ecology)
 Womersley & Edmonds, 1958 (distribution)
- Chelonibia caretta*
 Monroe, 1981 (systematics; host)
 Monroe & Limpus, 1979 (systematics; host)
- Chelonibia patula*
 Monroe, 1981 (systematics; host)
- Chelonibia testudinaria*
 Jones, 1990b,c (distribution)
 Monroe, 1981 (systematics; hosts)
 Monroe & Garrett, 1979 (host)
 Monroe & Limpus, 1979 (systematics; host)
- Cetapirus complanatus*
 Jones, 1990c (distribution)
- Coronula diadema*
 Jones, 1990c (distribution)
- Epopella simplex*
 Dakin, Bennett & Pope, 1948 (distribution)
 Jones, 1990b (distribution)
 Pope, 1945 (systematics), 1966 (distribution)
- Tetraclitella divisa*
 Anderson, 1986 (morphology; embryology)
- Tetraclitella purpurascens*
 Anderson, 1969 (embryology)
 Anderson & Anderson, 1985 (morphology)
 Anderson & Buckle, 1983 (cirral activity)
 Dakin, Bennett & Pope, 1948 (distribution)
 Denley & Underwood, 1979 (ecology)
 Egan & Anderson, 1988 (larval development)
 Endean, Kenny & Stephenson, 1956 (distribution)
 Foster & Anderson, 1986 (systematics)
 Jones, 1987b, 1987c, 1990b (distribution)
 Pope, 1943 (distribution), 1945 (systematics)
 Wisely & Blick, 1964 (breeding)
- Tetraclitella squamosa*
 Jones, 1990c (distribution)
- Tesseropora rosea*
 Anderson, 1969 (embryology)
 Anderson & Anderson, 1985 (morphology)
 Anderson & Buckle, 1983 (cirral activity)
 Caffey, 1982, 1985 (ecology)
 Dakin, Bennett & Pope, 1948 (distribution)
 Denley & Underwood, 1979 (ecology)
 Egan & Anderson, 1988 (larval development)
 Endean, Kenny & Stephenson, 1956 (distribution)
 Jones, 1990a (distribution)
 Otway & Anderson, 1985 (growth)
 Otway & Underwood, 1987 (ecology)
 Pope, 1943 (distribution), 1945 (systematics)
 Wisely & Blick, 1964 (breeding)
- Tetraclitella coerulea*
 Endean, Kenny & Stephenson, 1956 (distribution)
- Tetraclitella vitata*
 Endean, Kenny & Stephenson, 1956 (distribution)
 Endean, Stephenson & Kenny, 1956 (distribution)
 Stephenson, 1961, 1968 (distribution)
 Stephenson, Endean & Bennett, 1958 (distribution)
- Chirona amaryllis*
 Endean, Kenny & Stephenson, 1956 (distribution)
 Jones, 1990c (distribution)
- Pope, 1945 (systematics)
- Chirona tenuis*
 Jones, 1990c (distribution)
- Acasta dofleini*
 Jones, 1990b (distribution)
- Acasta pecinipes*
 Jones, 1990c (distribution)
- Acasta spongites*
 Jones, 1990b (distribution)
- Acasta sulcata*
 Jones, 1990b,c (distribution)
- Elminius adelaidae*
 Bayliss, 1988 (systematics)
- Elminius covertus*
 Egan & Anderson, 1985 (larval development)
 Foster, 1982 (systematics)
 Jones, 1990b (distribution)
- Elminius modestus*
 Foster, 1982 (systematics)
 Jones, 1990b (distribution)
- Hexaminus foliorum*
 Anderson, Anderson & Egan, 1988 (systematics; cirral activity; reproduction)
 Egan & Anderson, 1985 (larval development [as *H. popeiana*])
- Hexaminus popeiana*
 Anderson, Anderson & Egan, 1988 (systematics; cirral activity; reproduction; larval development)
 Foster, 1982 (systematics)
- Balanus amphitrite*
 Egan & Anderson, 1986 (larval development)
 Jones, 1987b, 1987c, 1990b,c (distribution)
 Pope, 1945 (systematics)
 Wisely & Blick, 1964 (breeding)
- Balanus reticulatus*
 Jones, 1990b (distribution)
- Balanus variegatus*
 Allen, 1950, 1953 (distribution)
 Egan & Anderson, 1986 (larval development)
 Jones, 1987b, 1987c, 1990b,c (distribution)
 Lewis, 1981, 1982 (distribution); 1985 (systematics)
 Pope, 1945 (systematics); 1966 (distribution)
 Russ, 1977 (distribution)
 Russ & Wake, 1975 (distribution)
 Wisely & Blick, 1964 (breeding)
- Balanus trigonus*
 Jones, 1987b, 1987c, 1990b,c (distribution)
 Monroe & Limpus, 1979 (on turtles)
 Pope, 1945 (systematics)
 Wisely & Blick, 1964 (breeding)
- Notomegalanus algicola*
 Dakin, Bennett & Pope, 1948 (distribution)
- Austromegalanus nigrescens*
 Dakin, Bennett & Pope, 1948 (distribution)
 Egan & Anderson, 1987 (larval development)
 Endean, Kenny & Stephenson, 1956 (distribution)
 Jones, 1987b, 1987c, 1990b (distribution)
 Pope, 1943 (distribution); 1945 (systematics)
 Womersley & Edmonds, 1958 (distribution)
- Megalobalanus tintinnabulum*
 Jones, 1990b,c (distribution)
- Megalobalanus validus*
 Jones, 1990c (distribution)

References

(Biological - Appendix A)

- Allen, F.E., 1950. Investigations on underwater fouling. III Notes on the fouling organisms attached to naval mines in north Queensland waters. *Australian Journal of Marine and Freshwater Research* 1: 106-109.
- Allen, F.E., 1953. Distribution of marine invertebrates by ships. *Australian Journal of Marine and Freshwater Research* 4(2): 307-316.
- Anderson, D.T., 1965. Embryonic and larval development and segment formation in *Ibla quadrivalvis* Cuvier (Cirripedia). *Australian Journal of Zoology* 13: 1-15.
- Anderson, D.T., 1969. On the embryology of the cirripede crustaceans *Tetraclita rosea* (Krauss), *Tetraclita purpurascens* (Wood), *Chthamalus antennatus* (Darwin) and *Chamaesipho columna* (Spengler) and some considerations of crustacean phylogenetic relationships. *Philosophical Transactions of the Royal Society, London, Series B*, 256: 183-235.
- Anderson, D.T., 1980. Cirral activity and feeding in the lepadomorph barnacle *Lepas pectinata* Spengler (Cirripedia). *Proceedings of the Linnean Society of New South Wales* 104: 147-159.
- Anderson, D.T., 1983. *Catomerus polymerus* and the evolution of the balanomorph form in barnacles (Cirripedia). *Memoirs of the Australian Museum* 18: 7-20.
- Anderson, D.T., 1986. The circumtropical barnacle *Tetraclitella divisa* (Nilsson-Cantell) (Balanomorpha, Tetraclitidae): cirral activity and larval development. *Proceedings of the Linnean Society of New South Wales* 109: 107-116.
- Anderson, D.T., 1987. The larval musculature of the barnacle *Ibla quadrivalvis* Cuvier (Cirripedia, Lepadomorpha). *Proceedings of the Royal Society, London, Series B*, 231: 313-338.
- Anderson, D.T. & J.T. Anderson, 1985. Functional morphology of the balanomorph barnacles *Tesseropora rosea* (Krauss) and *Tetraclitella purpurascens* (Wood) (Tetraclitidae). *Australian Journal of Marine and Freshwater Research* 36: 87-113.
- Anderson, D.T., J.T. Anderson & E.A. Egan, 1988. Balanoid barnacles of the genus *Hexaminius* (Archaeobalanidae: Elminiinae) from mangroves of New South Wales, including a description of a new species. *Records of the Australian Museum* 40: 205-223.
- Anderson, D.T. & J. Buckle, 1983. Cirral activity and feeding in the coronuloid barnacles *Tesseropora rosea* (Krauss) and *Tetraclitella purpurascens* (Wood) (Tetraclitidae). *Bulletin of Marine Science* 33: 645-655.
- Anderson, D.T. & A.J. Southward, 1987. Cirral activity of barnacles. pp. 135-174. In A.J. Southward (ed.). *Barnacle Biology*. A.A. Balkema, Rotterdam.
- Bayliss, D.E., 1988. A new intertidal barnacle of the genus *Elminius* (Cirripedia: Thoracica) from South Australia. *Transactions of the Royal Society of South Australia* 112(2): 75-79.
- Bennett, I. & E.C. Pope, 1953. Intertidal zonation of the exposed rocky shores of Victoria, together with a rearrangement of the biogeographical provinces of temperate Australian shores. *Australian Journal of Marine and Freshwater Research* 4: 105-159.
- Bennett, I. & E.C. Pope, 1960. Intertidal zonation of the exposed rocky shores of Tasmania and its relationship with the rest of Australia. *Australian Journal of Marine and Freshwater Research* 11: 182-221.
- Caffey, H.M., 1982. No effect of naturally-occurring rock types on settlement or survival in the intertidal barnacle *Tesseropora rosea* (Krauss). *Journal of Experimental Marine Biology and Ecology* 63: 119-132.
- Caffey, H.M., 1985. Spatial and temporal variation in settlement and recruitment of intertidal barnacles. *Ecological Monographs* 55: 313-332.
- Dakin, W., I. Bennett & E.C. Pope, 1948. A study of certain aspects of the ecology of the intertidal zone of the New South Wales coast. *Australian Journal of Scientific Research, series B*, 1(2): 176-230.
- Denley, E.J. & A.J. Underwood, 1979. Experiments on factors influencing the settlement, survival and growth of two species of barnacle in New South Wales. *Journal of Experimental Marine Biology and Ecology* 36: 269-293.
- Egan, E.A. & D.T. Anderson, 1985. Larval development of *Elminius covertus* Foster and *Hexaminius popeiana* Foster (Cirripedia, Archaeobalanidae, Elminiinae) reared in the laboratory. *Australian Journal of Marine and Freshwater Research* 36: 383-404.
- Egan, E.A. & D.T. Anderson, 1986. Larval development of *Balanus amphitrite* Darwin and *Balanus variegatus* Darwin (Cirripedia, Balanidae) from New South Wales, Australia. *Crustaceana* 51: 188-207.
- Egan, E.A. & D.T. Anderson, 1987. Larval development of the megabalanine balanomorph *Austromegabalanus nigrescens* (Lamarck) (Cirripedia, Balanidae). *Australian Journal of Marine and Freshwater Research* 38: 511-522.
- Egan, E.A. & D.T. Anderson, 1988. Larval development of the coronuloid barnacles *Austrobalanus imperator* (Darwin), *Tetraclitella purpurascens* (Wood) and *Tesseropora rosea* (Krauss) (Cirripedia: Tetraclitidae). *Journal of Natural History* 22: 1379-1405.
- Egan, E.A. & D.T. Anderson, 1989. Larval development of the chthamloid barnacles *Catomerus polymerus* Darwin, *Chamaesipho tasmanica* Foster & Anderson and *Chthamalus antennatus* Darwin (Cirripedia, Chthamaloidea). *Zoological Journal of the Linnean Society, London* 95(1): 1-28.
- Endean, R., R. Kenny & W. Stephenson, 1956. The ecology and distribution of intertidal organisms on the rocky shores of the Queensland mainland. *Australian Journal of Marine and Freshwater Research* 7(1): 88-146.
- Endean, R., W. Stephenson & R. Kenny, 1956. The ecology and distribution of intertidal organisms on certain islands off the Queensland coast. *Australian Journal of Marine and Freshwater Research* 7(3): 317-342.
- Foster, B.A., 1982. Two new intertidal balanoid barnacles from eastern Australia. *Proceedings of the Linnean Society of New South Wales* 106: 21-32.
- Foster, B.A. & D.T. Anderson, 1986. New names for two well known shore barnacles (Cirripedia: Thoracica) from Australia and New Zealand. *Journal of the Royal Society of New Zealand* 16: 57-69.

- Healy, J.M. & D.T. Anderson, 1990. Sperm ultrastructure in the Cirripedia and its phylogenetic significance. *Records of the Australian Museum* 42: 1-26.
- Jones, D.S., 1987a. Systematics and biogeography of western Australian cirripedes (Thoracica-Lepadomorpha, Balanomorpha). Unpublished M.Sc. thesis, Zoology Department, University of Western Australia, 650 pp.
- Jones, D.S., 1987b. Preliminary investigations on the barnacles of the Swan-Canning river estuary. pp. 141-152. In J. John (ed.). *Swan River Estuary, Ecology and Management*. Curtin University Environmental Studies Group Report No. 1.
- Jones, D.S., 1987c. A key to the common sessile barnacle species in Swan-Canning river estuary, Western Australia. pp. 153-162. In J. John (ed.). *Swan River Estuary, Ecology and Management*. Curtin University Environmental Studies Group Report No. 1.
- Jones, D.S., 1990a. Occurrence of the barnacle *Tesseropora rosea* Krauss (Thoracica, Balanomorpha, Tetracitidae) in western Australian waters. *Records of the Western Australian Museum* 14(4): 665-668.
- Jones, D.S., 1990b. The shallow-water barnacles of southern Western Australia. In F.E. Wells, D.I. Walker, H. Kirkman & R. Lethbridge (eds). *Proceedings of the Third International Marine Biological Workshop: The Marine Flora and Fauna of Albany, Western Australia*. Western Australian Museum, Perth (in press).
- Jones, D.S., 1990c. A guide to the shallow water barnacles (Cirripedia: Lepadomorpha, Balanomorpha) of the Shark Bay area of Western Australia. pp. 209-229. In P. Barry, S. Bradshaw & B. Wilson (eds). *Research in Shark Bay: Report of the France-Australie Bicentenary Committee*, Western Australian Museum.
- Lewis, J.A., 1981. Records of Australian fouling organisms: sessile barnacles (Crustacea, Cirripedia). Australian Department of Defence, Defence Science and Technology Organisation, Materials Research Laboratories. Report MRL-R-809.
- Lewis, J.A., 1982. A guide to the principle marine fouling organisms with particular reference to Cockburn Sound. Australian Department of Defence, Defence Science and Technology Organisation, Material Research Laboratories. Report MRL-R-858.
- Lewis, J.A., 1985. A reexamination of *Balanus variegatus* Darwin (Cirripedia, Thoracica) from southern Australia. *Crustaceana* 48(2): 117-132.
- MacIntyre, R.J., 1966. Rapid growth in stalked barnacles. *Nature*, London 212: 637-638.
- Monroe, R., 1981. Coronulidae (Cirripedia): shell morphology, growth and function, and their bearing on subfamily classification. *Memoirs of the Queensland Museum* 20(2): 327-252.
- Monroe, R. & R. Garrett, 1979. *Chelonibia testudinaria* (L.) (Cirripedia, Coronulidae) on *Crocodylus porosus* Schneider, a new host record. *Crustaceana* 36(1): 108.
- Monroe, R. & C.J. Limpus, 1979. Barnacles on turtles in Queensland waters with descriptions of three new species. *Memoirs of the Queensland Museum* 19(3): 197-223.
- Otway, N.M. & D.T. Anderson, 1985. Variability of shell growth and morphology of the wall-plate junctions of the intertidal barnacle *Tesseropora rosea* (Cirripedia; Tetracitidae). *Marine Biology* 85: 171-183.
- Otway, N.M. & A.J. Underwood, 1987. Experiments on orientation of the intertidal barnacle *Tesseropora rosea*. *Journal of Experimental Marine Biology and Ecology* 105: 85-106.
- Pope, E.C., 1943. Animal and plant communities of the coastal rock platform at Long Reef, New South Wales. *Proceedings of the Linnean Society of New South Wales* 68(5-6): 221-254.
- Pope, E.C., 1945. A simplified key to the sessile barnacles on the rocks, boats, wharf piles and other installations in Port Jackson and adjacent waters. *Records of the Australian Museum* 21(6): 351-372.
- Pope, E.C., 1958. The barnacle *Xenobalanus globicipitis* Steenstrup, in Australian seas. *Proceedings of the Royal Zoological Society of New South Wales* 1956-1957: 159-161.
- Pope, E.C., 1959. Some Australian barnacles. *Australian Museum Magazine* December, 1959: 116-119.
- Pope, E.C., 1965. A review of Australian and some Indomalayan Chthamalidae (Crustacea, Cirripedia). *Proceedings of the Linnean Society of New South Wales* 90(1): 10-77.
- Pope, E.C., 1966. Sessile barnacles (Thoracica, Cirripedia). Port Phillip Survey 1957-1963. *Memoirs of the National Museum of Melbourne* 27: 179-182.
- Russ, G.R., 1977. A comparison of the marine fouling occurring at the two principal Australian Naval Dockyards. Department of Defence, Defence Science and Technology Organisation, Materials Research Laboratories. Report MRL-R-688.
- Russ, G.R. & L.V. Wake, 1975. A manual of the principal marine fouling organisms. Department of Defence, Australian Defence Scientific Service, Materials Research Laboratories. Report MRL-R-644.
- Stephenson, W., 1961. Experimental studies on the ecology of intertidal environments at Heron Island. II. The effect of substratum. *Australian Journal of Marine and Freshwater Research* 12(2): 164-176.
- Stephenson, W., 1968. The intertidal acorn barnacle *Tetraclita vitiata* Darwin on Heron Island. University of Queensland Papers, Great Barrier Reef Committee, Heron Island Research Station 1(3): 51-59.
- Stephenson, W., R. Endean & I. Bennett, 1958. An ecological survey of the marine fauna of Low Isles, Queensland. *Australian Journal of Marine and Freshwater Research* 9(2): 261-318.
- Underwood, A.J., 1981. Structure of the rocky intertidal community in New South Wales: patterns of vertical distribution and seasonal changes. *Journal of Experimental Marine Biology and Ecology* 51: 57-85.
- Underwood, A.J., E.J. Denley & M.J. Moran, 1983. Experimental analysis of the structure and dynamics of mid-shore rocky intertidal communities in N.S.W. *Oecologia* 56: 202-219.
- Walker, G. & D.T. Anderson, 1990. Haemolymph pressures in barnacles. *Proceedings of the Royal Society of London* (in press).
- Wisely, B. & R.A.P. Blick, 1964. Seasonal abundance of first stage nauplii in ten species of barnacles at Sydney. *Australian Journal of Marine and Freshwater Research* 15(2): 162-171.
- Womersley, H.B.S. & S.J. Edmonds, 1958. A general account of the intertidal ecology of South Australian coasts. *Australian Journal of Marine and Freshwater Research* 9(2): 217-260.

INDEX

(bold figure refers to main checklist)

- aapta*, *Weltneria* 20, 24
Acasta 2, 15, 21, 22, 23, 24, 25
acutum, *Cantellius* 17, 25
adelaidae, *Elminius* 16, 23, 33
adiposa, *Heteralepas* 6, 25
ajax, *Megabalanus* 19, 26
albicostatus, *Balanus* 18, 24
Alcockianum 4, 27
alcockianum, *Alcockianum* 4, 27
alearum, *Hexelasma* 13, 23
Alepas 8, 23, 24
algicola, *Notomegabalanus* 18, 24, 33
allium, *Armatobalanus* 2, 14, 21, 25
Altiverruca 19, 21, 23, 24, 27
amaryllis, *Chirona* (*Striatobalanus*)
..... 2, 14, 21, 22, 24, 25, 26, 27, 33
Amigdoscalpellum 5, 26, 27
amphitrite, *Balanus* 2, 18, 21, 22, 23, 24, 25, 28, 33
anatifera, *Lepas* 2, 7, 21, 22, 23, 24, 25, 26, 27, 32
anchorella, *Kochlorine* 20, 24, 25, 26
Anguloscalpellum 5, 25, 27
Annandaleum 4, 27
anserifera, *Lepas* 2, 7, 21, 22, 23, 24, 25, 26, 32
antennatus, *Chthamalus* 2, 11, 22, 23, 24, 25, 32
antipathidis, *Acasta* 15, 21
Arcoscalpellum 5, 23, 24, 27
arcuatus, *Armatobalanus* 14, 21
Armatobalanus 2, 14, 21, 25
aurantiacum, *Pachylasma* 2, 10, 24
auricoma, *Solidobalanus* 15, 21, 22, 23, 24, 26, 27
auritum, *Conchoderma* 2, 8, 22, 23, 24, 25, 27, 32
australicum, *Verum* 5, 27
australis, *Lepas* 2, 7, 22, 23, 24, 26
Austrobalanus 2, 13, 24, 25
Austromegabalanus 2, 18, 22, 23, 24, 25, 33
aymonini, *Octolasmis* 9, 23
Balanus 2, 18, 21, 22, 23, 24, 25, 26, 33
bathynomi, *Temnaspis* 10, 25, 26, 27
Berndtia 20, 21, 26
bimae, *Chirona* (*Striatobalanus*) 14, 21
brunnea, *Octomeris* 11, 25, 32
Calantica 4, 22
calceola, *Conopea* 16, 21, 25
cancellata, *Pyrgoma* 18, 21
candidum, *Verum* 5, 26
Cantellius 17, 25, 26
caretta, *Chelonibia* 11, 21, 25, 27, 32
Catomerus 2, 10, 22, 23, 24
Catophragmus 2
caudata, *Euraphia* 11, 21, 25
cauta, *Lithotrya* 2
cepa, *Armatobalanus* 14, 21
Cetopirus 13, 22, 23, 24
Chamaesipho 2, 11, 23, 24, 32
cheloniae, *Tubicinella* 13, 25
Chelonibia 11, 21, 22, 24, 25, 26, 27, 32
Chirona 2, 14, 21, 22, 24, 25, 26, 27, 33
Chthamalus 2, 11, 21, 22, 23, 24, 25, 26, 32
ciliatus, *Solidobalanus* 15, 21, 25
cirratus, *Balanus* 18, 21
clubii, *Octolasmis* 9, 24
coerulescens, *Tetraclita* 14, 25, 33
columna, *Chamaesipho* 2
complanatus, *Cetopirus* 12, 22, 23, 24
compressus, *Solidobalanus* 15, 23
Conchoderma 2, 8, 21, 22, 23, 24, 25, 26, 27, 32
conchula, *Altiverruca* 19, 21, 27
conjugatum, *Nobia* 17, 21
Conopea 16, 21, 25
cor, *Octolasmis* 9, 24, 25
coriacea, *Platylepas* 12, 24, 25
cornuta, *Heteralepas* 6, 25
Coronula 12, 21, 22, 23, 24, 25
costellatum, *Amigdoscalpellum* 5, 26
covertus, *Elminius* 16, 22, 23, 24, 25, 33
crenatum, *Savignium* 17, 26
Creusia 17, 26
crystallina, *Altiverruca* 19, 21
Cryptophialus 20, 26
cumingi, *Ibla* 7, 21, 25, 32
cuneiformis, *Membranobalanus* 15, 21
cyathus, *Acasta* 15, 21, 22, 24
Cylindrolepas 12, 25
cymbiformis, *Conopea* 16, 21
dannevigi, *Paralepas* 6, 23, 26
darwiniana, *Cylindrolepas* 12, 25
daschae, *Amigdoscalpellum* 5, 27
decorata, *Platylepas* 12, 24, 25
dentatum, *Savignium* 17, 21, 22, 26
dermochelys, *Stomatolepas* 12, 25
diadema, *Coronula* 12, 21, 22, 23, 24, 25
divisa, *Tetraclitella* 13, 25, 32
dofleini, *Acasta* 15, 21, 22, 23, 25
dorsalis, *Lithotrya* 3, 21
Dosima 8
dubia, *Heteralepas* 6, 24
dubium, *Arcoscalpellum* 5, 27
eburnea, *Trilasmis* (*Poecilasma*) 8, 21, 22, 26
elegans, *Amigdoscalpellum* 5, 27
elongatum, *Savignium* 17, 26
Elminius 2, 16, 22, 23, 24, 25, 33
Epopella 2, 13, 22, 23, 24, 32
Euraphia 11, 21, 25, 26, 32
euspinulosum, *Cantellius* 17, 26
fascicularis, *Lepas* (*Dosima*) 8, 22, 23, 24, 26
filigranus, *Armatobalanus* 14, 21
fiissum, *Temnaspis* 10, 22, 24, 26
foliorum, *Hexaminus* 16, 24, 33
fossata, *Berndtia* 20, 21, 26
georgei, *Paralepas* 6, 22, 23
geryonophila, *Octolasmis* 9, 25
gibbosa, *Altiverruca* 19, 21, 27
giganteum, *Litoscalpellum* 4, 26
gigas, *Megalasma* (*Glyptelasma*) 8, 26
glans, *Acasta* 2, 15, 21, 23, 24, 25
globicipitis, *Xenobalanus* 1, 13, 21, 24, 25, 34
gracile, *Megalasma* (*Glyptelasma*) 9, 26, 27
grandis, *Nobia* 18, 21
gregarius, *Cantellius* 17, 25
grillum, *Arcoscalpellum* 5, 26
habei, *Lithoglyptes* 20, 23, 24, 25
hamata, *Kochlorine* 20, 21
hamatum, *Megalasma* (*Glyptelasma*) 9, 23
hawaiense, *Octolasmis* 9, 26
Heteralepas 6, 21, 24, 25
heterodontus, *Cryptophialus* 20, 26
Hexaminus 16, 24, 25, 33

hexastylus, *Platylepas* 12, 21, 24, 25
Hexelasma 13, 23, 26
hillii, *Lepas* 2, 7, 22, 23, 24, 25, 32
hirsuta, *Acasta* 15, 21
hirsuta, *Weltneria* 20, 23
hirsutum, *Trianguloscapellum* 5, 27
hoeki, *Octolasmis* 9, 24
Ibla 2, 7, 21, 22, 23, 24, 25, 26, 32
idiotica, *Ibla* 7, 23
imperator, *Austrobalanus* 2, 13, 24, 25
indica, *Oxynaspis* 8, 22, 23, 25, 26
indubia, *Octolasmis* 9, 23
intermedia, *Octomeris* 11, 25
intermedia, *Paralepas* 6, 26
intermedium, *Litoscapellum* 4, 26
inum, *Arcoscapellum* 5, 26
japonica, *Heteralepas* 6, 21, 24, 25
japonicum, *Pachylasma* 10, 27
juddi, *Litoscapellum* 4, 21, 26
kaempferi, *Poecilasma* 9, 22, 23, 24, 25, 26, 27
kilepoeae, *Temnaspis* 10, 24
Kochlorine 20, 21, 24, 25, 26
lambda, *Annandaleum* 4, 27
lanceolatus, *Cryptophilus* 20, 26
Lepas 2, 7, 21, 22, 23, 24, 25, 26, 27, 32
Lithoglyptes 20, 23, 24, 25, 26
Lithotrya 2, 3, 21, 24, 25
Litoscapellum 4, 21, 26
lowei, *Octolasmis* 9, 22, 23, 24
malayensis, *Chthamalus* 11, 21, 22, 24, 25, 26, 32
Megabalanus 2, 9, 21, 22, 23, 24, 25, 26
Megalasma (*Megalasma*) 8, 21, 24, 26, 27
Megalasma (*Glyptelasma*) 8, 23, 26
Membranobalanus 15, 21
Metaverruca 19, 21, 23, 24, 27
michelottianum, *Arcoscapellum* 5, 26, 27
milleporum, *Savignium* 17, 26
minuta, *Paralepas* 6, 24
mjobergi, *Conopea* 16, 21
modestus, *Elminius* 2, 16, 22, 23, 24
moluccanum, *Arcoscapellum* 6, 27
morula, *Paralepas* 6, 26
multicostata, *Tetraclitella* 13, 21, 25
muricata, *Stephanolepas* 12, 25
navicula, *Altiverruca* 19, 21, 23, 24, 26
neptuni neptuni, *Octolasmis* 9, 22, 24, 25
nicobarica, *Lithotrya* 2, 3, 24
neirstraszi, *Octolasmis* 10, 21
nigrescens, *Austromegabalanus* 2, 18, 22, 23, 24, 25, 33
nipponense, *Litoscapellum* 4, 26
Nobia 17, 21, 26
nolearia, *Hexelasma* 13, 26
Notomegabalanus 18, 24, 33
novaezelandiae, *Verum* 5, 26
Octolasmis 9, 21, 22, 23, 24, 25, 26, 27
Octomeris 11, 25, 32
ophiophilus, *Platylepas* 12, 21, 22
orientale, *Megalasma* (*Glyptelasma*) 9, 26
orthogonia, *Octolasmis* 10, 21, 22, 24, 26, 27
Oxynaspis 8, 22, 23, 25
Pachylasma 2, 10, 23, 24, 27
pacifica, *Alepas* 8, 23, 24
palinura urea, *Paralepas* 6, 24
pallidus, *Balanus* 18, 22
pallidus, *Cantellius* 17, 25, 26
Paralepas 6, 22, 23, 24, 25, 27

patula, *Chelonibia* 11, 21, 22, 24, 25, 26, 32
pectinata, *Lepas* 2, 8, 21, 22, 23, 24, 26, 32
pectinipes, *Acasta* 15, 22, 23, 25
pedunculata, *Paralepas* 7, 24, 27
pedunculatum, *Anguloscapellum* 5, 25, 27
peronii, *Smilium* 2, 4, 22, 23, 24
pertosum, *Arcoscapellum* 6, 23
Planoscapellum 4, 26
planum, *Planoscapellum* 4, 26
Platylepas 12, 21, 22, 24, 25
Poecilasma 9, 22, 23, 24, 25, 26, 27
polymerus, *Catomerus* 2, 10, 22, 23, 24, 32
popeiana, *Hexaminus* 16, 24, 25, 33
porosa, *Tetraclita* 2
praegustator, *Stomatolepas* 12, 25
projectum, *Nobia* 18, 26
purpurascens, *Tetraclitella* 2, 13, 22, 23, 24, 25, 32
purpurata, *Acasta* 15, 25
purpurea, *Berndtia* 20, 21
pygmaeae, *Ibla* 7, 26
Pygoma 18, 21
quadrata, *Paralepas* 7, 22, 24
quadrivalvis, *Ibla* 2, 7, 22, 23, 24, 32
regium, *Trianguloscapellum* 5, 26
reticulata, *Weltneria* 20, 26
reticulatus, *Balanus* 18, 22, 25, 26
rosa, *Megabalanus* 19, 21, 22, 24
rosea, *Tesseropora* 2, 13, 22, 23, 24, 25, 33
Savignium 17, 21, 22, 26
Scapellum 2, 4, 21, 26
scamborachis, *Lithoglyptes* 20, 26
sculpta, *Metaverruca* 19, 21, 23, 24, 27
scuticosta, *Octolasmis* 10, 24
scutistriata, *Pachylasma* 10, 23, 24
scyllarusi, *Paralepas* 7, 24, 25
secundus, *Cantellius* 17, 26
septimus, *Cantellius* 17, 26
simplex, *Epopella* 2, 13, 22, 23, 24, 32
sinense, *Smilium* 4, 23
Smilium 2, 4, 22, 23, 24
Solidobalanus 15, 21, 22, 23, 24, 25, 27
solidus, *Solidobalanus* 15, 25
spinatus, *Lithoglyptes* 20, 24, 25
spinitergum, *Acasta* 15, 21
spinulosa, *Creusia* 17, 26
spongites, *Acasta* 16, 21, 22, 23
squamosa squamosa, *Tetraclita* 2, 14, 21, 22, 25, 26
stearnsi, *Scapellum* 4, 21, 26
Stephanolepas 12, 25
Stomatolepas 12, 25
striatum, *Megalasma* (*Megalasma*) 8, 21, 24, 26
studerii, *Calantica* 4, 22
sulcata, *Acasta* 2, 16, 21, 22, 23, 24, 25
tasmanica, *Chamaesipho* 2, 11, 23, 24, 32
Temnaspis 10, 22, 24, 25, 26, 27
tenuis, *Chirona* (*Striatobalanus*) 14, 21, 22, 25
terebratus, *Armatobalanus* 14, 21
Tesseropora 2, 13, 22, 24, 25, 33
testudinaria, *Chelonibia* 11, 21, 22, 25, 26, 32
testudinata, *Lepas* 8, 22, 23, 26
Tetraclita 2, 14, 21, 22, 25, 26, 33
Tetraclitella 2, 13, 21, 22, 23, 24, 25, 32
tintinnabulum, *Megabalanus* 2, 19, 21, 22, 23, 24, 25
transversa, *Stomatolepas* 12, 25
Trilasmis 8, 21, 22, 26
Trianguloscapellum 5, 26, 27

<i>tridens asymmetrica</i> , <i>Temnaspis</i>	10, 25
<i>trigonus</i> , <i>Balanus</i>	2, 18, 21, 22, 23, 24, 25, 33
<i>truncatum</i> , <i>Arcoscalpellum</i>	6, 27
<i>tuberosa</i> , <i>Paralepas</i>	7, 24
<i>Tubicinella</i>	13, 25
<i>utinomii</i> , <i>Heteralepas</i>	6, 26
<i>valentiana</i> , <i>Lithotrya</i>	3, 21, 25
<i>validus</i> , <i>Megabalanus</i>	19, 22
<i>variegatus</i> , <i>Balanus</i>	18, 22, 23, 24, 25, 33
<i>Verum</i>	5, 21, 26, 27
<i>virgatum</i> , <i>Conchoderma</i>	8, 21, 22, 23, 24, 25, 26
<i>virgatum chelonophilium</i> , <i>Conchoderma</i>	8, 25
<i>virgatum</i> , <i>Verum</i>	5, 21
<i>vitiata</i> , <i>Tetraclita</i>	2, 14, 21, 25, 33
<i>volcano</i> , <i>Megabalanus</i>	19, 24
<i>wainwrighti</i> , <i>Cryptophialus</i>	20, 26
<i>warwicki</i> , <i>Octolasmis</i>	10, 21, 24, 25
<i>Weltneria</i>	20, 23, 24, 26
<i>wireni</i> , <i>Tesseropora</i>	14, 26
<i>withersi</i> , <i>Euraphia</i>	11, 21, 25, 26, 32
<i>Xenobalanus</i>	13, 21, 24, 25
<i>zuiho</i> , <i>Acasta</i>	16, 21