

5033-91
5034-91

AUSTRALIAN MUSEUM,
SYDNEY.

CATALOGUE

OF THE

FISHES

IN THE COLLECTION OF THE

AUSTRALIAN MUSEUM.

PART I.

RECENT PALÆICHTHYAN FISHES

BY

J. DOUGLAS OGILBY, F.L.S.

Assistant in Zoology.

PRINTED BY ORDER OF THE TRUSTEES.

E. P. Ramsay, Curator.

Sydney:

F. W. WHITE, PRINTER, 39 MARKET STREET WEST.

1888.



Handwritten red ink scribble or signature.

AUSTRALIAN MUSEUM,
SYDNEY.

CATALOGUE

OF THE

FISHES

IN THE COLLECTION OF THE

AUSTRALIAN MUSEUM.

PART I.

RECENT PALÆICHTHYAN FISHES

BY

J. DOUGLAS OGILBY, F.L.S.

Assistant in Zoology.

PRINTED BY ORDER OF THE TRUSTEES.

E. P. Ramsay, Curator.

Sydney :

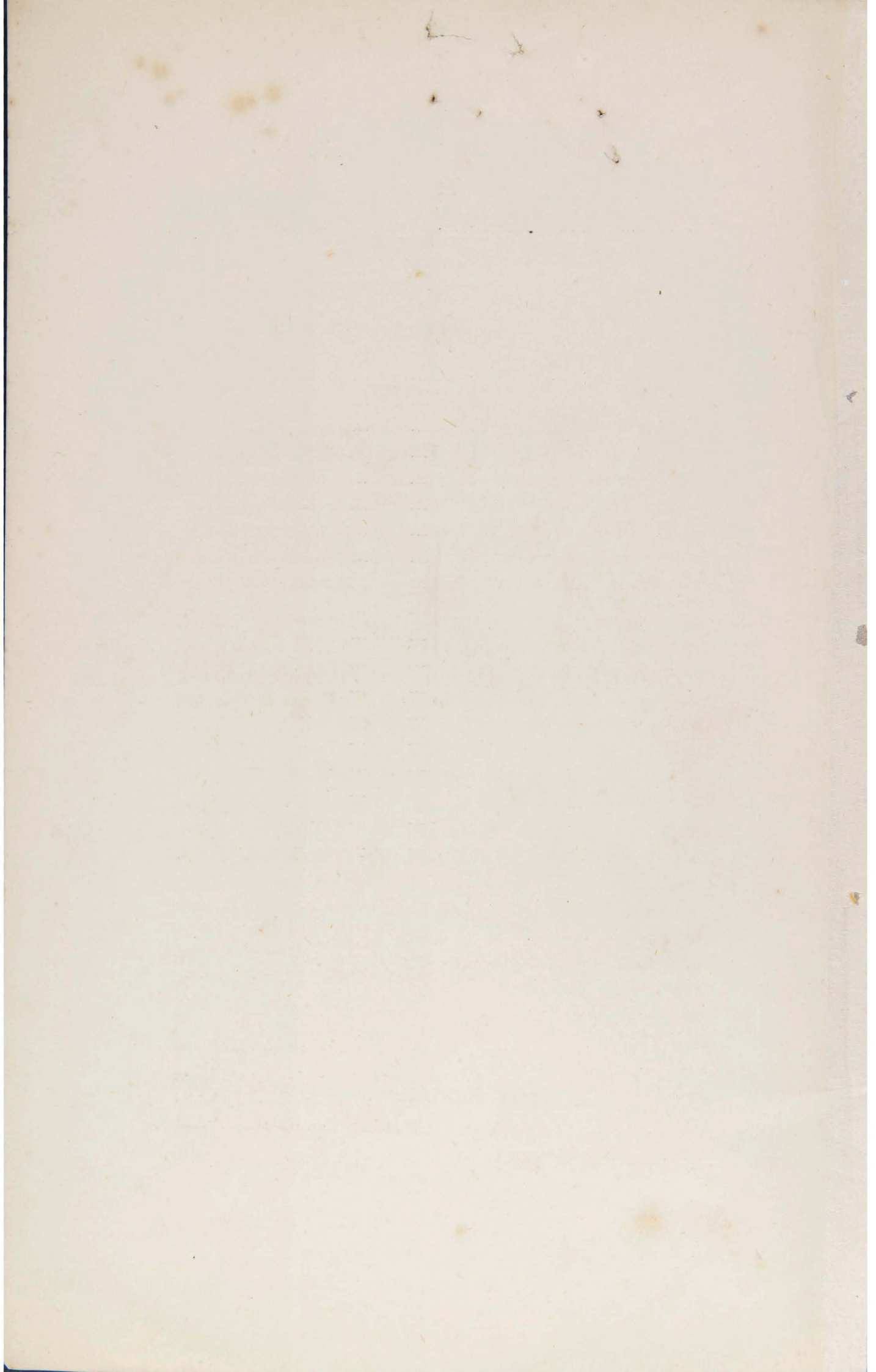
F. W. WHITE, PRINTER, 39 MARKET STREET WEST.

1888.

Australian Museum Library



060684



PREFACE.

IN the present Catalogue all the specimens, four hundred and twenty two in number, of recent Palæichthyan Fishes contained in the collection of the Australian Museum, are enumerated; and each one of these specimens has been carefully examined by Mr. Ogilby. Of this number two hundred and ten have been selected and set out for exhibition. The total number representing species is one hundred and nine, fifty-three genera, and twenty families.

Of this Sub-class the Museum contains nine types, namely, *Carcharias macrurus*, Ramsay & Ogilby; *Scyllium anale*, Ogilby; *Parascyllium nuchale*, McCoy; *Heterodontus japonicus*, Maclay & Macleay; *Raia australis*, Macleay; *Urolophus bucculentus*, Macleay; *Pteroplatea australis*, Ramsay & Ogilby; *Chimæra neglecta*, Ogilby; and *Cephaloptera alfredi*, Krefft. In addition to these the Museum possesses the types of *Carcharias malabaricus*, Day, which that author subsequently decided to be synonymous with *C. menisorrah*, M. & H., and that of *Tæniura mortoni*, Macleay, which cannot be considered specifically distinct from *T. lymma*, Forskäl; also of *Ceratodus miolepis*, Gnth., the fellow specimen to that named by Dr. Günther himself, and brought back from the International Fisheries Exhibition, London, 1883; this is at the most a barely distinguishable variety of *C. forsteri*, (Krefft, sp.). There is also on exhibition a co-type (see Proc. U.S. Nat. Museum 1881, p. 17) of *Raia inornata*, J. & G.

In the Catalogue will be found the names of all the species at present represented in the Museum, and as the species of living Palæichthyans are computed to amount to about three hundred and twenty-five, it will be seen that almost exactly one-third of the total number is on exhibition.

The following list shews in a concise form the number of genera, species, and specimens belonging to each family of Palæichthyan Fishes now in the collection.

Families.	Genera.	Species.	Specimens.
CARCHARIIDÆ	6	19	60
LAMNIDÆ... ..	5	5	14
NOTIDANIDÆ	1	1	5
SCYLLIIDÆ	7	12	50
HETERODONTIDÆ	1	5	47
SPINACIDÆ	6	8	15
RHINIDÆ... ..	1	1	12
PRISTIOPHORIDÆ... ..	1	1	6
PRISTIDÆ	1	4	21
RHINOBATIDÆ	3	7	39
TORPEDINIDÆ	3	5	24
RAIDÆ	2	8	19
TRYGONIDÆ	5	15	71
MYLIOBATIDÆ	3	5	10
CHIMÆRIDÆ	2	3	7
SIRENIDÆ	2	2	9
ACIPENSERIDÆ	1	4	5
POLYODONTIDÆ	1	1	1
POLYPTERIDÆ	1	1	5
LEPIDOSTEIDÆ	1	2	2
	53	109	422

For the information of the public the following explanation of the method on which this Catalogue has been drawn up may be useful. When possible, the sex, age, method of preservation, locality whence it came, and means by which it was obtained are given with every specimen; and in the case of those on exhibition the corresponding number on the Museum Register, and the part of the building in which they may be seen is added. Case 13, containing the smaller specimens, is situated on the ground floor, at the left hand side of the main staircase, while the larger specimens are hung round the

Central Hall, upper floor, separating the Australian and Foreign Ornithological galleries.

All specimens to which no number is attached are available for exchange.

Where the word Commission is used, such as "Straits' Settlements Commission," it is to be understood that the specimen was obtained from the Commissions representing that particular Section or Country at the Great International Fisheries Exhibition, London, 1883.

The abbreviations used throughout the Catalogue are (D.) Donated by ; (C.) Collected by ; (E.) Received by exchange from ; (P.) Purchased of ; (T.) Obtained by the Museum trawls ; (O.C.) Old Collection.

Australian Museum,
5th May, 1888.

1840

1841

1842

1843

1844

1845

1846

1847

1848

1849

1850

1851

1852

1853

1854

1855

1856

Class PISCES.

Sub-class I. PALÆICHTHYES.

Order I. CHONDROPTERYGII.

Sub. Order I. PLAGIOSTOMATA.

Division A. SELACHOIDEI.

Family I. Carchariidæ.

Genus I. CARCHARIAS.

1. CARCHARIAS LATICAUDUS, *M. & H.*

a. Female imm., 16 inches, spirits. Bombay. From Dr. Day's collection. *Case 13. I. 76.*

2. CARCHARIAS ACUTUS, *Rüpp.*

a. Female imm., 12 inches, spirits. Burnett River, Q. Mr. H. Smithurst (D.). *Case 13. B. 7028.*

b. Female imm., 13 inches, spirits. Madras. From Dr. Day's collection. *Case 13. I. 77.*

c. Female imm., 13 inches, spirits. No particulars.

3. CARCHARIAS DUMERILII, *Bleek.*

a. Female ad., 30 inches, spirits. New Hebrides (P.). *Case 13. B. 3809.*

4. CARCHARIAS GLAUCUS, (*Linn., sp.*)

a - c. Fœtus, spirits. Australia (O.C.). *Case 13. I. 1425.*

d. Female imm., 36 inches, spirits. Megavissey, England (P.).

5. *CARCHARIAS DUSSUMIERI*, *M. & H.*

- a.* Male imm., 19 inches, spirits. Salangore. Straits' Settlements Commission (E.). *Case 13.* B. 5052.

6. *CARCHARIAS MACRURUS*, *R. & O.*

- a.* Male imm., 35 inches, mounted. Port Jackson (P.). Type of the species. *Case 13.* I. 1155.
- b.* Male imm., 40 inches, spirits. Port Jackson (P.).
- c, d.* Females imm., 38 inches, spirits. Port Jackson (P.).
- e.* Male imm., 42 inches, skin. Port Jackson (P.).
- f.* Female imm., 34 inches, skin. Port Jackson (P.).

7. *CARCHARIAS MELANOPTERUS*, *Q. & G.*

- a - e.* Fœtus, spirits. Ugi, Solomon Islands. Mr. A. Morton (C.). *Case 13.* I. 1621.

8. *CARCHARIAS MENISORRAH*, *M. & H.*

- a.* Female imm., 17 inches, spirits. Calicut. From Dr. Day's collection. Type of *C. malabaricus*, Day. *Case 13.* I. 61.
- b, c.* Males imm., 24 and 26 inches, spirits. Port Moresby, New Guinea (P.).

Genus 2. *GALEOCERDO*.9. *GALEOCERDO RAYNERI*, *McDon. & Bar.*

- a.* Female ad., 13 feet, mounted. Port Jackson. Mr. S. Barnett (D.). *Central Hall, upper floor.* A. 12216.
- b.* Female ad., 10½ feet, mounted. Port Jackson (P.). *Central Hall, upper floor.* I. 1733.
- c.* Female imm., 6½ feet, mounted. Port Jackson. Mr. I. Josephson (D.).

10. GALEOCERDO TIGRINUS, *M. & H.*

- a.* Male imm., 30 inches, mounted. Ugi, Solomon Islands. Mr. A. Morton (C.). *Case 13.* A. 11366.
- b.* Female imm., 36 inches, spirits. Ugi, Solomon Islands. Mr. A. Morton (C.). *Case 13.* A. 11367.

Genus 3. GALEUS.

11. GALEUS VULGARIS, *Flem.*

- a.* Male imm., 17 inches, spirits. Megavissey, England (P.). *Case 13.* B. 5127.
- b.* Male imm., 12 inches, spirits. England (P.). *Case 13.* B. 5400.
- c.* Male imm., 14 inches, spirits. Monterey, Cal. Smithsonian Inst. (E.). *Case 13.* I. 1645.

12. GALEUS AUSTRALIS, *Macleay*

- a.* Female ad., 5 feet, mounted. Port Jackson (P.). *Case 13.* I. 1647.
- b - g.* Fœtus, taken from mother, spirits. Port Jackson (T.). *Case 13.* B. 8391.
- h.* Male imm., 16 inches, spirits. Port Jackson. Mr. J. Douglass (D.).

Genus 4. ZYGÆNA.

13. ZYGÆNA MALLEUS, (*Shaw*, sp.)

- a.* Female imm., 4½ feet, mounted. Port Jackson. Mr. I. Josephson (D.). *Case 13.* A. 1385.
- b.* Female ad., 14 feet, mounted. Richmond River, N.S.W. Mr. T. Temperley (D.). *Central Hall, upper floor.* I. 1734.
- c.* Fœtus, taken from *b*, spirits. *Case 13.* B. 7052.
- d, e.* Fœtus, taken from *b*, spirits.
- f.* Male imm., 30 inches, spirits. Brisbane Water, N.S.W. Mr. J. Longmore (D.).
- g.* Male imm., 40 inches, skin. Port Jackson. Mr. I. Josephson (D.).

14. ZYGÆNA TUDES, *Cuv.*

- a.* Female imm., 18 inches, spirits. Madras. From Dr. Day's collection. *Case* 13. I. 112.

Genus 5. TRIACIS.

15. TRIACIS SEMIFASCIATA, *Girard*

- a.* Male imm., 18 inches, spirits. Santa Barbara, Cal. Smithsonian Inst. (E.). *Case* 13. I. 1642.

Genus 6. MUSTELUS.

16. MUSTELUS VULGARIS, *M. & H.*

- a.* Male imm., 24 inches, spirits. Santa Barbara, Cal. Smithsonian Inst. (E.). *Case* 13. I. 1644.

17. MUSTELUS CANIS, (*Mitch.*, sp.)

- a.* Male imm., 26 inches, spirits. Wood's Holl, Mass. Smithsonian Inst. (E.). *Case* 13. I. 1643.

18. MUSTELUS LEVIS, *Risso*

- a.* Jaws. Mediterranean. Mr. V. Friç (P.). *Case* 13. I. 1717.

19. MUSTELUS ANTARCTICUS, *Gnth.*

- a.* Male ad., 40 inches, mounted. Port Jackson (P.). *Case* 13. B. 3487.

- b-f.* Fœtus, taken from mother, spirits. Broken Bay (P.). *Case* 13. B. 7210.

- g.* Male imm., 12 inches, spirits. Launceston, Tas. Mr. K. Broadbent (C.).

- h.* Female imm., 14 inches, spirits. Launceston, Tas. Mr. K. Broadbent (C.).

Family II. Lamnidæ.

Genus 7. LAMNA.

20. LAMNA GLAUCA, (*M. & H.* sp.)

- a.* Male imm., 40 inches, mounted. Port Jackson (P.). *Case 13.*
A. 17694.
- b.* Female imm., 36 inches, mounted. Port Jackson (P.). *Central Hall, upper floor.* B. 3518,
- c.* Head, spirits. Botany Bay. Mr. L. Miller (D.). *Case 13.*
A. 10508.

Genus 8. CARCHARODON.

21. CARCHARODON RONDELETHI, *M. & H.*

- a, b.* Males ad., 10 and 11 feet, mounted. Port Jackson (P.).
Central Hall, upper floor. I. 1723,-4.
- c, d.* Females ad., 9 and 12 feet, mounted. Port Jackson (P.).
Central Hall, upper floor. I. 1742,-25.
- e.* Male ad., 9 feet, skeleton. Port Jackson (P.). *Case 18.* B. 31.

Genus 9. ODONTASPIS.

22. ODONTASPIS AMERICANUS, (*Mitch.*, sp.)

- a, b.* Males ad., 7 feet, mounted. Port Jackson (P.). *Central Hall, upper floor.* A. 5204,-5.
- c.* Male imm., 4 feet, mounted. Port Jackson (P.). *Central Hall, upper floor.* I. 1727.
- d.* Female ad., 10 feet, skin. Port Jackson (P.).

Genus 10. ALOPIAS.

23. ALOPIAS VULPES, (*Gmel.*, sp.)

- a.* Female ad., 8½ feet, mounted. English Coast (P.). *Central Hall, upper floor.* B. 4646.

Genus 11. CETORHINUS.

24. CETORHINUS MAXIMUS, (*Gunner*, sp.)

- a. Portion of the Gill-rakers of a large example. Portland, Vic.
Mr. H. Barnes (C.). *Case* 13. I. 1753.

Family III. Notidanidæ.

Genus 12. NOTIDANUS.

25. NOTIDANUS INDICUS, *Cuv.*

- a. Male ad., 6 feet, mounted. Port Jackson (P.). *Central Hall, upper floor.* B. 4595.
- b. Female ad., 5½ feet, mounted. Port Jackson (P.). *Central Hall, upper floor.* B. 4647.
- c. Female imm., 52 inches, mounted. Broken Bay (P.). *Case* 13. I. 854.
- d. Female ad., 6½ feet, skin. Port Jackson (P.).
- e. Male ad., 6 feet, skeleton. Botany Bay (P.). *Case* 18. I 1750.

Family IV. Scylliidæ.

Genus 13. SCYLLIUM.

26. SCYLLIUM ANALE, *Ogilby*

- a. Male ad., 24 inches, mounted. Port Jackson. Bondi Aquarium Co. (D.). *Case* 13. I. 1754.
- b. Male ad., 22 inches, spirits. Port Jackson (T.). Type of the species. *Type-room.* B. 8447.
- c. Male ad., 20 inches, spirits. Port Jackson (P.). *Case* 13. I. 1700.
- d. Male ad., 19 inches, spirits. Port Jackson. Bondi Aquarium Co. (D.).
- e. Male ad., 20 inches, spirits. Port Jackson (P.).
- f. Female ad., 23 inches, spirits. Port Jackson (P.).

27. SCYLLIUM CANICULA, (*Linn.*, sp.)

- a. Female ad., 18 inches, spirits. England(O.C.). *Case* 13. I. 1428.
- b. Female ad., 18 inches, spirits. Mediterranean (O.C.). *Case* 13. I. 1427.
- c. Male ad., 24 inches, spirits. France, Paris Mus. (E.).
- d. Male ad., 16 inches, spirits. England (O.C.).
- e. Female ad., 16 inches, spirits. England (O.C.).

Genus 14. PRISTIURUS.

28. PRISTIURUS MELANOSTOMUS, *Bp.*

- a. Female imm., 20 inches, spirits. Mediterranean (O.C.). *Case* 13. I. 1426.

Genus 15. GINGLYMOSTOMA.

29. GINGLYMOSTOMA CONCOLOR, (*Rüpp.*, sp.)

- a. Male imm., 5½ feet, mounted. Purves Sound, Solomon Islands. Mr. A. Morton (C.). *Case* 13. A. 10620.

Genus 16. STEGOSTOMA.

30. STEGOSTOMA TIGRINUM, (*Gmel.*, sp.)

- a. Female imm., 30 inches, spirits. Cape York, Q. Mr. A. Morton (C.). *Case* 13. I. 1720.
- b. Female imm., 17 inches, spirits. Madras. From Dr. Day's collection. *Case* 13. I. 62.
- c. Female imm., 13 inches, spirits. Formosa (O.C.). *Case* 13. I. 1432.

Genus 17. PARASYLLIUM.

31. PARASYLLIUM VARIOLATUM, (*Dum.*, sp.)

- a. Male ad., 32 inches, mounted. Hobart. Tasmanian Mus. (E.). *Case* 13. B. 3519.

32. PARASCYLLIUM NUCHALE, *McCoy*

- a.* Female ad., 25 inches, mounted. Port Phillip. Prof. McCoy (D.). *Case 13.* A. 10582.

Genus 18. CHILOSCYLLIUM.

33. CHILOSCYLLIUM OCELLATUM, (*Gmel.*, sp.)

- a.* Female ad., 22 inches, mounted. Port Jackson (P.). *Case 13.* I. 1596.
- b.* Female ad., 23 inches, spirits. Port Jackson (P.). *Case 13.* B. 8389.
- c.* Female ad., 25 inches, spirits. Port Jackson (P.).
- d, e.* Males ad., 25 and 27 inches, spirits. South-eastern New Guinea. Mr. E. J. Cairn (C.).
- f, g.* Females ad., 26 inches, spirits. South-eastern New Guinea. Mr. E. J. Cairn (C.).
- h.* Female ad., 18 inches, spirits. Port Moresby, New Guinea. Mr. A. Goldie (C.).
- i.* Male imm., 14 inches, spirits. Port Moresby, New Guinea. Mr. A. Goldie (C.).

34. CHILOSCYLLIUM INDICUM, (*Gmel.*, sp.)

- a.* Female ad., 24 inches, spirits. Malabar. From Dr. Day's collection. (*Var. obscurum*). *Case 13.* I. 56.
- b.* Male imm., 15 inches, spirits. Singapore. Straits' Settlements Commission (E.). (*Var. plagiosum*). *Case 13.* B. 4984.
- c-f.* Males imm., 7 to 9 inches, spirits. Chinese seas (O.C.).

35. CHILOSCYLLIUM MODESTUM, *Gnth.*

- a.* Female ad., 30 inches, mounted. Port Jackson (T.). *Case 13.* I. 1397.
- b.* Female ad., 30 inches, mounted. Port Jackson (T.).
- c.* Male ad., 24 inches, mounted. Port Jackson (P.).
- d.* Female imm., 10 inches, spirits. Broken Bay (P.). *Case 13.* I. 1655.

Genus 19. CROSSORHINUS.

36. CROSSORHINUS BARBATUS, (*Gmel.*, sp.)

- a, b.* Males ad., 6 to 7 feet, mounted. Port Jackson (P.). *Central Hall, upper floor.* I. 1735,-6.
- c.* Female ad., 36 inches, mounted. Richmond River, N.S.W. Mr. J. Thorpe (C.). *Case 13.* I. 1763.
- d.* Male ad., 32 inches, mounted. Port Stephens, N.S.W. Messrs. Brazier and Thorpe (C.). *Case 13.* A. 13223.
- e.* Male imm., 22 inches, spirits. Port Jackson. Mr. Fitzhardinge (D.). *Case 13.* A. 4063.
- f.* Male imm., 19 inches, spirits. Port Stephens, N.S.W. Messrs. Brazier and Thorpe (C.).
- g, h.* Males imm., 22 and 24 inches, spirits. Port Jackson (T.)
- i, j.* Female imm., 23 to 26 inches, spirits. Port Jackson (T.).
- k.* Female ad., 36 inches, skin. Richmond River, N.S.W. Mr. J. Thorpe (C.).
- l.* Male ad., 5 feet, skeleton. Port Jackson (P.). *Case 18.* I. 1746.

37. CROSSORHINUS DASYPOGON, *Bleek.*

- a.* Female ad., 4 feet, mounted. Torres Straits. Mr. F. Summers (D.). *Case 13.* A. 12536.

Family V. Heterodontidæ.

Genus 20. HETERODONTUS.

38. HETERODONTUS PHILLIPI, (*Schn.*, sp.)

- a.* Female ad., 4 feet, mounted. Port Jackson. Mr. I. Josephson (D.). *Case 13.* A. 180.
- b.* Female imm., 14 inches, spirits. Port Jackson (T.). *Case 13.* B. 8986.
- c.* Male imm., 29 inches, spirits. Port Jackson. Mr. I. Josephson (D.).

- d, e.* Males imm., 8 and 24 inches, spirits. Port Jackson. Dr. J. Cox (D.).
- f-n.* Males, 17 to 36 inches, spirits. Port Jackson (T.).
- o-q.* Females imm., 7 to 19 inches, spirits. Port Jackson (T.).
- r.* Male ad., 31 inches, skin. Port Hacking, N.S.W. Dr. J. Cox (D.).
- s.* Male ad., 36 inches, skin. Broken Bay. Dr. W. Williams (D.).
- t.* Female ad., 46 inches, skin. Port Jackson. Mr. I. Josephson (D.).
- u-w.* Males ad., 28 to 40 inches, skins. Port Jackson (T.).
- x.* Female ad., 48 inches, skin. Port Jackson (P.).
- y.* Male ad., 32 inches, skeleton. Port Jackson (T.). *Case 18.*
I. 1742.
- z.* Egg-case containing foetus, spirits. Bondi Aquarium Co. (D.).
Case 13. I. 1417.

39. HETERODONTUS ZEBRA, *Gray*

- a.* Female imm., 18 inches, spirits. Open sea off Swatow, China. Chinese Commission (E.). *Case 13.* I. 1366.

40. HETERODONTUS JAPONICUS, *Maclay & Macleay*

- a.* Female imm., 16 inches, spirits. Tokio, Japan. Educational Mus., Tokio (E.). Type of the species. *Case 13.* B. 68.

41. HETERODONTUS FRANCISCI, (*Girard*, sp.)

- a.* Female imm., 7 inches, spirits. San Diego, Cal. Smithsonian Inst. (E.). *Case 13.* I. 545.

42. HETERODONTUS GALEATUS, (*Gnth.*, sp.)

- a.* Female ad., 38 inches, mounted. Port Jackson (P.). *Case 13.*
A. 9628.
- b.* Female imm., 14 inches, spirits. Port Jackson (T.). *Case 13.*
B. 8985.

- c.* Female ad., 24 inches, spirits. Port Stephens. Dr. J. Cox (D.).
d. Male ad., 21 inches, spirits. Port Stephens. Messrs. Brazier & Thorpe (C.).
e-l. Males, 7 to 24 inches, spirits. Port Jackson (T.).
m-q. Females, 9 to 18 inches, spirits. Port Jackson (T.).
r. Female ad., 36 inches, skeleton. Port Jackson (T.). *Case* 18. I. 1740.

Family VI. Spinacidæ.

Genus 21. CENTRINA.

43. CENTRINA SALVIANI, *Risso*

- a.* Female ad., 25 inches, mounted. Mediterranean. Florence Mus. (E.). *Case* 13. I. 1752.

Genus 22. ACANTHIAS.

44. ACANTHIAS VULGARIS, *Risso*

- a.* Female ad., 25 inches, spirits. Port Jackson (P.). *Case* 13. A. 8434.
b. Male imm., 15 inches, spirits. England (P.). *Case* 13. B. 5408.
c. Female ad., 46 inches, spirits. Norway. Norwegian Commission (E.).
d-f. Males imm., 12 to 15 inches, spirits. England (P.).
g, h. Females imm., 12 and 14 inches, spirits. England (P.).

45. ACANTHIAS BLAINVILLII, *Risso*

- a.* Female imm., 14 inches, spirits. Adriatic (O.C.). *Case* 13. I. 1431.

Genus 23. SPINAX.

46. SPINAX NIGER, *Bp.*

- a.* Female imm., 13 inches, spirits. Norway. Norwegian Commission (E.). *Case* 13. B. 4909. (Sent as *Squalus acanthias*).

47. SPINAX PUSILLUS, (*Lowe*, sp.)

- a.* Male imm., 12 inches, spirits. Madeira (O.C.). *Case* 13.
I. 1430.

Genus 24. SCYMNUS.

48. SCYMNUS LICHIA, (*Lacép.*, sp.)

- a.* Jaws. Mediterranean. Mr. V. Friê (P.). *Case* 13. I. 1718.

Genus 25. LÆMARGUS.

49. LÆMARGUS BOREALIS, (*Scoresby*, sp.)

- a.* Female ad., 25½ inches, mounted. North Sea. Norwegian
Commission (E.). *Central Hall, upper floor.* I. 1741.

Genus 26. ECHINORHINUS.

50. ECHINORHINUS SPINOSUS, (*Gmel.*, sp.)

- a.* Female ad., 5 feet, mounted. Mediterranean. Florence Mus.
(E.). *Case* 13. I. 1751.

Family VII. Rhinidæ.

Genus 27 RHINA.

51. RHINA SQUATINA, (*Linn.*, sp.)

- a.* Female ad., 42 inches, mounted. Port Jackson. Mr. —
Skinner (D.). A. 4036.
- b.* Male imm., 10 inches, spirits. Port Jackson (T.). *Case* 13.
B. 6128.
- c.* Female ad., 36 inches, sprits. Port Jackson (T.).
- d, e.* Females ad., 30 inches, spirits. Port Jackson (T.).
- f - h.* Females imm., 9 to 11 inches, spirits. Megavissey,
England (P.).
- i, j.* Female imm., 9 and 13 inches, spirits. England (P.).
- k.* Male ad., 40 inches, skin. Port Jackson (T.).
- l.* Male ad, 33 inches, skeleton. Port Jackson (T.). *Case* 18.
I. 1744.

Family VIII. Pristiophoridae.

Genus 28. PRISTIOPHORUS.

52. PRISTIOPHORUS CIRRATUS, (*Lath.*, sp.)

- a.* Male ad., 36 inches, mounted. Broken Bay (P.). *Case 13.*
I. 1394.
- b.* Male ad., 43 inches, mounted. Manly. Mr. H. Prince (D.).
- c.* Female ad., 44 inches, mounted. Port Jackson (T.).
- d, e.* Females ad., 38 inches, skins. Port Jackson. Dr. J. Cox (D.).
- f.* Female ad., 36 inches, skeleton. Port Jackson (T.). *Case 18.*
I. 1747.

Division B. BATOIDEI.

Family IX. Pristidae.

Genus 29. PRISTIS.

53. PRISTIS ZYSRON, *Bleek*

- a.* Female ad., 15 feet, mounted. Moreton Bay, Q. (P.). *Central*
Hall, upper floor. I. 1722.
- b.* Male ad., 12 feet, mounted. Moreton Bay, Q. (P.). *Central*
Hall, upper floor. I. 1739.
- c.* Female imm., 30 inches, mounted. Lake Macquarie, N.S.W.
(P.). *Case 13.* I. 1755.
- d.* Female ad., 16 feet, mounted. Lake Macquarie, N.S.W. (P.).
- e - g.* Males imm., 30 to 33 inches, skins. Lake Macquarie,
N.S.W. (P.).
- h, i.* Females imm., 30 and 32 inches, skins. Lake Macquarie,
N.S.W. (P.).
- j, k.* Rostra, 25 and 27 inches. Queensland. Mr. W. Hargraves
(D.). *Case 13.* A. 129,—130.
- l.* Rostrum, 48 inches. Maryborough, Q. Insp. Lloyd (D.).
- m.* Rostrum, 63 inches. Queensland. Dr. J. Cox (D.).

- n.* Rostrum, 50 inches. Locality unknown. Mr. G. McConnell (D.).
o - q. Rostra, 40 to 58 inches. No particulars.

54. *PRISTIS PECTINATUS*, *Lath.*

- a.* Rostrum, 35 inches. Red Sea. Florence Mus. (E.). *Case* 13.
 B. 6682.

55. *PRISTIS ANTIQUORUM*, *Lath.*

- a.* Rostrum, 38 inches. Brazil. Florence Mus. (E.). *Case* 13.
 B. 6681.

56. *PRISTIS CUSPIDATUS*, *Lath.*

- a, b.* Rostra, 27 inches. Madras (P.). *Case* 13. I. 1760,-1.

Family X. Rhinobatidæ.Genus 30. *RHYNCHOBATUS*.57. *RYNCHOBATUS DJEDDENSIS*, (*Forsk.*, sp.)

- a, b.* Females ad., 5 and 6 feet, mounted. Locality unknown.
Central Hall, upper floor. I. 1728,-38.
c. Female ad., 4 feet, mounted. Port Jackson (P.). *Case* 13.
 B. 8394.
d. Female imm., 20 inches, spirits. Madras. From Dr. Day's
 collection. *Case* 13. I. 23.

Genus 31. *RHINOBATUS*.58. *RHINOBATUS HALAVI*, (*Forsk.*, sp.)

- a.* Female ad., 30 inches, mounted. Cochin. From Dr. Day's
 collection. *Case* 13. I. 21.

59. *RHINOBATUS GRANULATUS*, *Cuv.*

- a.* Female ad., 36 inches, mounted. Lagoon on Stradbroke Island,
 Moreton Bay, Q. Mr. J. D. Ogilby (D.). *Case* 13. I. 475.
b. Male imm., 14 inches, spirits. Madras. From Dr. Day's
 collection. *Case* 13. I. 26.

- c, d.* Males imm., 12 and 14 inches, spirits. South-eastern New Guinea. Mr. E. J. Cairn (C.).
- e.* Female imm., 13 inches, spirits. South-eastern New Guinea. Mr. E. J. Cairn (C.).

60. RHINOBATUS BOUGAINVILLII, *M. & H.*

- a.* Female ad., 30 inches, mounted. Port Jackson. Mr. J. Hughes (D.). *Case 13.* I. 1714.
- b.* Female imm., 10 inches, spirits. Port Jackson (T.). *Case 13.* B. 6521.
- c-f.* Males ad., 32 to 40 inches, spirits. Port Jackson (T.).
- g.* Female ad., 32 inches, spirits. Parramatta River (T.).
- h.* Female ad., 32 inches, skin. Port Jackson. Mr. I. Josephson (D.).
- i.* Male ad., 34 inches, skin. Port Jackson. Dr. J. Cox (D.).
- j.* Male ad., 32 inches, skin. Port Jackson (T.).
- k.* Female ad., 32 inches, skin. Port Jackson (T.).

61. RHINOBATUS COLUMNÆ, *M. & H.*

- a, b.* Females imm., 10 and 12 inches. Mangalore. From Dr. Day's collection. *Case 13.* I. 27,-28.

62. RHINOBATUS PRODUCTUS, *Ayres*

- a.* Female ad., 30 inches, mounted. San Pedro, Cal. Smithsonian Inst. (E.). *Case 13.* I. 633.

Genus 32. TRYGONORHINA.

63. TRYGONORHINA FASCIATA, *M. & H.*

- a.* Female ad., 34 inches, mounted. Port Jackson (T.). *Case 13.* I. 1353.
- b.* Female imm., 12 inches, spirits. Port Jackson (T.). *Case 13.* I. 1598.
- c.* Female ad., 25 inches, spirits. Port Jackson. Mr. W. G. Pitt (D.).

- d.* Male ad., 30 inches, spirits. Port Jackson (T.).
e-h. Males imm., 9 to 12 inches, spirits. Port Jackson (T.).
i-l. Females imm., 9 to 14 inches, spirits. Port Jackson (T.).
m, n. Females ad., 18 and 28 inches, skins. Port Jackson. Dr.
 J. Cox (D.).
o. Female ad., 40 inches, skeleton. Port Jackson (T.). *Case 18.*
 I. 1726.

Family XI. Torpedinidæ.

Genus 33. TORPEDO.

64. TORPEDO NARCE, (*Nardo*, sp.)

- a.* Male imm., 6 inches, spirits. Bay of Naples. Zoological Station,
 Naples (E.). *Case 13.* I. 1639. (Sent as *T. ocellata*.)
b. Female imm., 5 inches, spirits. Bay of Naples. Zoological
 Station, Naples (E.). *Case 13.* I. 1640. (Sent as *T. ocellata*.)

65. TORPEDO MARMORATA, *Risso*

- a.* Female imm., 10 inches, spirits. Atlantic (O.C.). *Case 13.*
 I. 1429.

Genus 34. NARCINE.

66. NARCINE TIMLEI, (*Schn.*, sp.)

- a.* Female imm., 8 inches, spirits. Madras. From Dr. Day's
 collection. *Case 13.* I. 49.

67. NARCINE CALIFORNICA, (*Ayres*, sp.)

- a.* Male imm., 10 inches, spirits. Soquel, Cal. Smithsonian Inst.
 (E.). *Case 13.* I. 1705. (Sent as *Torpedo californica*.)

Genus 35. HYPNOS.

68. HYPNOS SUBNIGRUM, *Dum.*

- a.* Female imm., 7 inches, spirits. Clarence River, N.S.W.
 Mr. T. Temperley (D.). *Case 13.* I. 498.

- b.* Male imm., 6 inches, spirits. Port Jackson (T.).
c-l. Males ad., 12 to 22 inches, spirits. Port Jackson (T.).
m, n. Females ad., 14 and 24 inches, spirits. Port Jackson (T.).
o. Male imm., 5 inches, spirits. Port Jackson (T.).
p-r. Females imm., 6 to 10 inches, spirits. Port Jackson (T.).
s. Female ad., 20 inches, skeleton. Port Jackson (T.). *Case* 18.
 I. 1748.

Family XII. Raiidæ.

Genus 36. RAI A.

69. RAI A CLAVATA, *Linn.*

- a.* Male ad., 24 inches, mounted. Mediterranean. Florence Mus.
 (E.). *Case* 13. I. 1445.
b. Male imm., 14 inches, spirits. England (O.C.). *Case* 13.
 I. 1710.
c-g. Males imm., 10 to 13 inches, spirits. England (O.C.).

70. RAI A MACULATA, *Mont.*

- a.* Male imm., 14 inches, spirits. England (O.C.). *Case* 13. I. 1709.
b, c. Males imm., 13 and 15 inches, spirits. England (O.C.).
d. Female imm., 14 inches, spirits. England (O.C.).

71. RAI A SCABRA, *Ogilby**

- a.* Female ad., 5½ feet, mounted. Manly (P.). *Central Hall,*
upper floor. I. 1346.
b. Male imm., 2 feet, spirits. Port Phillip. Mr. A. Morton (C.).

72. RAI A LEMPRIERI, *Rich.*

- a.* Male ad., 18 inches, spirits. Hobart. Tasmanian Mus. (E.).
Case 13. B. 5600.

* As Count Castelnau's name, *Raia rostrata*, has been previously used both by Lacépède and Risso it cannot of course stand, and I have therefore been obliged to substitute that now proposed.

73. *RAIA AUSTRALIS*, *Macl.*

- a.* Male ad., 18 inches, spirits. Off Port Jackson (T.). Type of the species. *Type room.* I. 1055.
- b.* Female ad., 15 inches, spirits. Off Port Jackson (T.). *Case* 13. B. 295.

74. *RAIA INORNATA*, *J. & G.*

- a.* Male ad., 21 inches, spirits. Monterey, Cal. Smithsonian Inst. (E.). Co-type of the species. *Case* 13. I. 1711.

75. *RAIA MACRORHYNCHUS*, *Rafin.*

- a.* Male ad., 17 inches, spirits. Mediterranean. Florence Mus. (E.). *Case* 13. I. 1712.

Genus 37. *PLATYRHINA*.76. *PLATYRHINA*, sp.*

- a.* Male ad., 18 inches, spirits. Santa Barbara, Cal. Smithsonian Inst. (E.). *Case* 13. I. 634.

Family XIII. Trygonidæ.Genus 38. *UROGYMNUS*.†77. *UROGYMNUS ASPERRIMUS*, (*Schn.*, sp.)

- a.* Female imm., dry skin. Kingsmill Islands. Mr. J. Brazier (D.). *Case* 13. I. 1721.

* This specimen bears a label corresponding to the number against *Rhinobatus triseriatus*, J. & G., on the accompanying Smithsonian Institution list. As this is doubtless an accidental error in the labelling I have refrained from re-naming this interesting species, since it has in all probability been previously described under its true genus, but the want of the necessary books debars me from ascertaining its correct name.

† With this and the succeeding genera of Batoideans the measurements given apply to the breadth of the disk.

Genus 39. TRYGON.

78. TRYGON UARNAK, (*Forsk.*, sp.)

- a. Female ad., 32 inches, mounted. Burdekin River, Q. Mr. A. Morton (C.). *Case 13. I. 1729.*
- b. Female imm., 12 inches, spirits. Malabar. From Dr. Day's collection. *Case 13. I. 18.*
- c. Female ad., 17 inches, spirits. Maryborough, Q. Mr. J. Thorpe (C.).
- d, e. Females imm., 9 inches, spirits. Port Essington, Q. Mr. A. Morton (C.).

79. TRYGON WALGA, *M. & H.*

- a. Male imm., 5 inches, spirits. Bombay. From Dr. Day's collection. *Case 13. I. 29.*
- b. Female imm., 9 inches, spirits. Madras. From Dr. Day's collection. *Case 13. I. 19.*
- c. Female imm., 6 inches, spirits. Singapore. Straits' Settlements Commission (E.). *Case 13. B. 4962.*

80. TRYGON PASTINACA, (*Linn.*, sp.)

- a. Female ad., 5½ feet, mounted. Port Jackson (P.). *Central Hall, upper floor. I. 1737.*
- b. Female imm., 27 inches, skin. Port Jackson (T.).
- c. Female imm., 28 inches, skeleton. Port Jackson (P.). *Case 18. I. 1745.*

81. TRYGON KUHLII, *M. & H.*

- a. Male ad., 20 inches, mounted. Parramatta River, N.S.W. (T.). *Case 13. I. 1091.*
- b. Female imm., 5 inches, spirits. Malay Archipelago. From Dr. Day's collection. *Case 13. B. 7807.*
- c. Male ad., 17 inches, spirits. Parramatta River, N.S.W. (T.).
- d. Male ad., 12 inches, spirits. Tonga. Rev. — Gray (D.).

- e.* Female imm., 5 inches, spirits. Port Essington, Q. Mr. A. Morton (C.).
- f, g.* Males ad., 11 inches, spirits. Ugi, Solomon Islands. Mr. A. Morton (C.).
- h.* Female ad., 12 inches, spirits. Ugi, Solomon Islands. Mr. A. Morton (C.).
- i.* Female ad., 13 inches, spirits. South-eastern New Guinea. Mr. E. J. Cairn (C.).

82. TRYGON TUBERCULATA, *Lacép.*

- a.* Male imm., 20 inches, mounted. Port Jackson (T.). Case 13. B. 8395.
- b.* Female ad., 5½ feet, skin. Port Jackson (P.).

83. TRYGON ZUGEL, *M. & H.*

- a.* Female imm., 7 inches, spirits. Madras. From Dr. Day's collection. Case 13. I. 20.

84. TRYGON SEPHEN, (*Forsk.*, sp.)

- a.* Male imm., 18 inches, mounted. Burdekin River, Q. Mr. A. Morton (C.). Case 13. I. 1758.
- b.* Male imm., 14 inches, spirits. Burdekin River, Q. Mr. A. Morton (C.).
- c.* Female imm., 15 inches, spirits. South-eastern New Guinea. Mr. E. J. Cairn (C.).

Genus 40. TÆNIURA.

85. TÆNIURA LYMMA, (*Forsk.*, sp.)

- a.* Female imm., 6 inches, spirits. Cape York, Q. Mr. A. Morton (C.). Type of *T. mortoni*, Macl. Case 13. B. 9177.
- b, c.* Males imm., 4½ and 8 inches, spirits. South-eastern New Guinea. Mr. E. J. Cairn (C.).

Genus 41. UROLOPHUS.

86. UROLOPHUS CRUCIATUS, (*Lacép.*, sp.)

- a.* Male ad., 9 inches, spirits. Port Jackson (T.). *Case* 13. I. 1027.
b. Male imm., 5 inches, spirits. Port Jackson (T.).
c - e. Females ad., 9 to 13 inches, spirits. Port Jackson (T.).

87. UROLOPHUS HALLERI, *Cooper*

- a.* Female ad., 8 inches, spirits. San Pedro, Cal. Smithsonian Inst. (E.). *Case* 13. I. 1713.

88. UROLOPHUS TESTACEUS, (*M. & H.*, sp.)

- a.* Female ad., 9 inches, spirits. Port Jackson (T.). *Case* 13. I. 1050.
b. Male ad., 10 inches, spirits. Port Jackson (T.).
c - h. Females ad., 9 to 11 inches, spirits. Port Jackson (T.).
i - m. Males imm., 4 to 7 inches, spirits. Port Jackson (T.).
n - v. Females imm., 4 to 7 inches, spirits. Port Jackson (T.).
w. Male imm., 6 inches, spirits. Port Phillip. Mr. A. Morton (C.). *Case* 13. A. 9206.*

89. UROLOPHUS BUCCULENTUS, *Macl.* †

- a.* Female ad., 21 inches, mounted. Off Barranjoey, N.S.W. (P.). *Case* 13. I. 817.
b. Female ad., 21 inches, mounted. Off Port Jackson (P.).
c - e. Females ad., 16 to 18 inches, skins. Off Port Jackson. N.S.W. Fisheries Commissioners (D.). Types of the species. B. 641,-3.

* This may eventually prove to be a different species, but with an immature example only before me, I consider it unwise to describe it.

† It is worthy of remark that all our examples of this species are of large size, and females.

Genus 42. PTEROPLATEA.

90. PTEROPLATEA MARMORATA, *Cooper*

- a.* Male imm., 11 inches, spirits. San Diego, Cal. Smithsonian Inst. (E.). *Case* 13. I. 1053.

91. PTEROPLATEA AUSTRALIS, *R. & O.*

- a.* Female ad., 34 inches, mounted. Broken Bay (P.). *Case* 13. I. 1100.
- b.* Male ad., 27 inches, spirits. Cape Hawke, N.S.W. Mr. J. Brown (D.). Type of the species. *Type room.* A. 9357.
- c.* Male ad., 18 inches, spirits. Broken Bay (P.). *Case* 13. I. 1007.
- d-f.* Fœtus, from *a*, 6 inches spirits. *Case* 13. I. 1101.

Family XIV. Myliobatidæ.

Genus 43. AËTOBATIS.

92. AËTOBATIS NARINARI, (*Euphr.*, sp.)

- a.* Female ad., 23 inches, mounted. Cape Hawke, N.S.W. Mr. J. Brown (D.). *Case* 13. A. 9355.
- b.* Female ad., 23 inches, spirits. Cape Hawke. Mr. J. Brown (D.).
- c.* Female ad., 19 inches, spirits. Madras. From Dr. Day's collection. *Case* 13. I. 22.

Genus 44. MYLIOBATIS.

93. MYLIOBATIS AUSTRALIS, *Macleay*

- a.* Female ad., 30 inches, mounted. Port Jackson. Mr. I. Josephson (D.). *Case* 13. B. 8424.
- b.* Female imm., 9 inches, spirits. Parramatta River, N.S.W. (T.). *Case* 13. B. 6522.
- c.* Male ad., 25 inches, skeleton. Port Jackson (P.). *Case* 18. I. 1749.

94. MYLIOBATIS CALIFORNICA, *Gill*

- a. Female imm., 12 inches, spirits. Santa Barbara, Cal.
Smithsonian Inst. (E.). *Case 13. I. 1715.*

Genus 45. CERATOPTERA.

95. CERATOPTERA ALFREDI, *Kreffl*

- a. Female ad., 11 feet, mounted. Port Jackson (P.). Type of
the species. *Central Hall, upper floor. I. 1731.*
- b. Male imm., $4\frac{1}{2}$ feet, mounted. Port Jackson (P.). *Central
Hall, upper floor. I. 1732.*

96. CERATOPTERA, sp.

- a. Female imm., 4 feet, mounted. New Hebrides (P.). *Central
Hall, upper floor. I. 1730,*

Sub. Order II. HOLOCEPHALA.

Family XV. Chimæridæ.

Genus 46. CHIMÆERA.

97. CHIMÆERA NEGLECTA, *sp. nov.**

- a. Male imm., 17 inches, spirits. No particulars. *Case 13.
I. 1757.*

98. CHIMÆERA COLLIEI, *Benn.*

- a. Female ad., 20 inches, spirits. Monterey, Cal. Smithsonian
Inst. (E.). *Case 13. I. 632.*

* This species, which, should it prove to be new, may be named as above, differs from *C. monstrosa* in having three dorsal fins, and from *C. colliei* in having the first and second of these fins sub-continuous, and the claspers divided into three branches.

Genus 47. CALLORHYNCHUS.

99. CALLORHYNCHUS ANTARCTICUS, (*Lacép.*, sp.)

- a.* Female ad., 36 inches, mounted. Bass' Straits. National Mus., Vic. (E.). *Case* 13. A. 9820.
- b.* Female ad., 32 inches, mounted. Bass' Straits. National Mus., Vic. (E.).
- c.* Female imm., 8 inches, spirits. Tasmania. Mr. K. Broadbent (C.). *Case* 13. A. 5347.
- d, e.* Females ad., 32 inches, spirits. Hobart. Tasmanian Mus. (E.).

Order II. GANOIDEI.

Sub. Order III. DIPNOI.

Family XVI. Sirenidæ.

Genus 48. PROTOPTERUS.

100 PROTOPTERUS ANNECTENS, *Owen*

- a.* 12 inches, spirits. Zanzibar (O.C.). *Case* 13. I. 265.
- b - d.* 4½ to 7 inches, spirits. Bahr-el-Arab, Soudan. Imperial Mus., Vienna (E.). *Case* 13. B. 3888,-90.

Genus 49. CERATODUS.

101. CERATODUS FORSTERI, (*Kreffft.*, sp.)

- a.* 44 inches, mounted. Mary River, Q. Mr. G. Masters (C.). *Case* 13. I. 1423.
- b.* 25 inches, mounted. Mary River, Q. Mr. — Buchanan (D.). Co-type of *C. miolepis*, Gnth. *Case* 13. A. 14079.
- c.* 36 inches, mounted. Queensland. Queensland Mus. (E.). *Case* 13. A. 14065.
- d.* 28 inches, spirits. Mary River, Q. (P.). *Case* 13. A. 8884.
- e.* 30 inches, spirits. Queensland. Queensland Mus. (E.).

Sub. Order IV. CHONDROSTEI.

Family XVII. Acipenseridæ.

Genus 50. ACIPENSER.

102. ACIPENSER RUTHENUS, *Linn.*

a. 9 inches, spirits. Russia (O.C.). *Case 13. I. 758.*

103. ACIPENSER NACCARI, *Bp.*

a. 18 inches, spirits. Venice. Florence Mus. (E.). *Case 13. I. 1289.*

104. ACIPENSER STURIO, *Linn.*

a. 3 feet, mounted. Locality unknown (O.C.). *Case 13. I. 1759.*

b. 15 inches, spirits. Locality unknown (O.C.). *Case 13. I. 1785.*

105. ACIPENSER OXYRHYNCHUS, *Mitch.*

a. 5 feet, mounted. New Brunswick. Canadian Commission (E.).
Case 13. B. 3079.

Family XVIII. Polyodontidæ.

Genus 51. POLYODON.

106. POLYODON FOLIUM, *Lacép.*

a. 15 inches, spirits. Mississippi (O.C.). *Case 13. I. 1422.*

Sub. Order V. POLYPTEROIDEI.

Family XIX. Polypteridæ.

Genus 52. POLYPTERUS.

107. POLYPTERUS BICHIR, *Geoffr.*

a. 12 inches, spirits. Africa (O.C.). *Case 13. I. 264.*

b - e. 9 to 14 inches, spirits. Bahr-el-Arab, Soudan. Imperial
Mus., Vienna (E.). *Case 13. B. 3871,-4.*

Sub. Order VI. LEPIDOSTEOIDEI.

Family XX. Lepidosteidæ.

Genus 53. LEPIDOSTEUS.

108. LEPIDOSTEUS VIRIDIS, (*Gmel.*, sp.)

a. 45 inches, mounted. North America (O.C.). *Case* 13. I. 1424.

109. LEPIDOSTEUS OSSEUS, (*Linn.*, sp.)

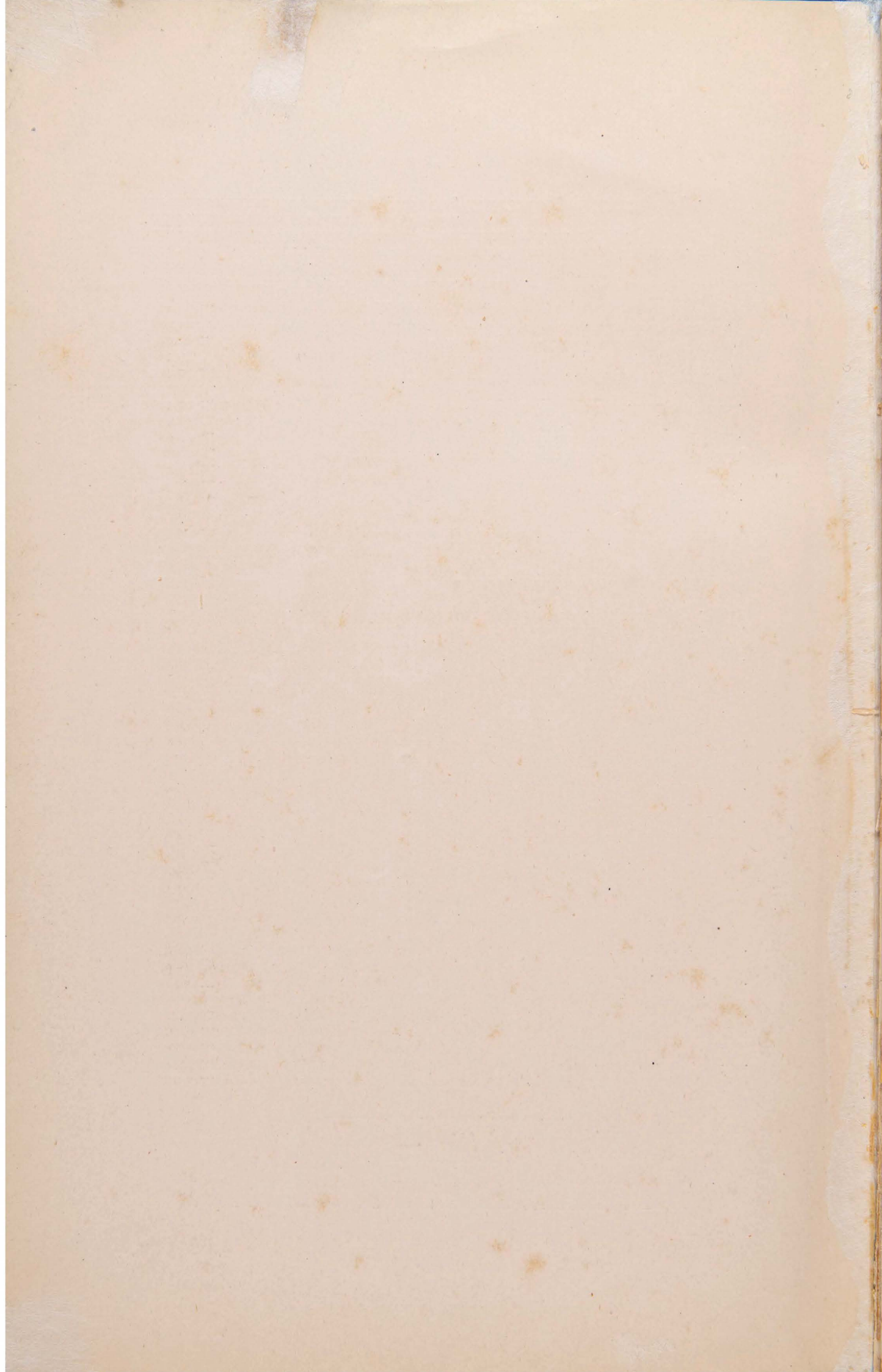
a. 22 inches, spirits. North America (O.C.). *Case* 13. I. 1421.

INDEX.

	PAGE.		PAGE
Acanthias	11	dasyopogon (Crossorhinus) ...	9
<i>acanthias</i> (<i>Squalus</i>)	11	Dipnoi	24
Acipenseridæ	25	djeddensis (Rhynchobatus) ...	14
Acipenser	25	dumerilii (Carcharias) ...	1
acutus (Carcharias)	1	dussumieri (Carcharias) ...	2
Aëtobatis	22	Echinorhinus	12
alfredi (Ceratoptera)	23	fasciata (Trygonorhina) ...	15
Alopias	5	folium (Polyodon)	25
americanus (Odontaspis)	5	forsteri (Ceratodus)	24
anale (Scyllium)	6	francisci (Heterodontus) ...	10
annectens (Protopterus)	24	galeatus (Heterodontus) ...	10
antarcticus (Callorhynchus) ...	24	Galeocerdo	2
antarcticus (Mustelus)	4	Galeus	3
antiquorum (Pristis)	14	Ganoidei	24
asperimus (Urogymnus)	18	Ginglymostoma	7
australis (Galeus)	3	glauca (Lamna)	5
australis (Myliobatis)	22	glaucus (Carcharias)	1
australis (Pteroplatea)	22	granulatus (Rhinobatus) ...	14
australis (Raia)	18	halavi (Rhinobatus)	14
barbatus (Crossorhinus)	9	halleri (Urolophus)	21
Batoidei	13	Heterodontidæ	9
bichir (Polypterus)	25	Heterodontus	9
blainvillii (Acanthias)	11	Holocephala	23
borealis (Lamargus)	12	Hypnos	16
bougainvillii (Rhinobatus) ...	15	indicum (Chiloscyllium) ...	8
bucculentus (Urolophus)	21	indicus (Notidanus)	6
californica (Myliobatis)	23	inornata (Raia)	18
californica (Narcine)	16	japonicus (Heterodontus) ...	10
<i>californica</i> (<i>Torpedo</i>)	16	kuhlii (Trygon)	19
Callorhynchus	24	Lamargus	12
canicula (Scyllium)	7	lævis (Mustelus)	4
canis (Mustelus)	4	Lamna	5
Carcharias	1	Lamnidæ	5
Carchariidæ	1	laticaudus (Carcharias) ...	1
Carcharodon	5	lemprieri (Raia)	17
Centrina	11	Lepidosteidæ	26
Ceratodus	24	Lepidosteoidei	26
Ceratoptera	23	Lepidosteus	26
Cetorhinus	6	lichia (Scymnus)	12
Chiloscyllium	8	lymma (Tæniura)	20
Chimæra	23	macrorhynchus (Raia)	18
Chimæridæ	23	macrurus (Carcharias)	2
Chondropterygii	1	maculata (Raia)	17
Chondrostei	25	<i>malabaricus</i> (Carcharias) ...	2
cirratus (Pristiophorus)	13	malleus (Zygæna)	3
clavata (Raia)	17	marmorata (Pteroplatea) ...	22
colliei (Chimæra)	23		
columnæ (Rhinobatus)	15		
concolor (Ginglymostoma)	7		
Crossorhinus	9		
cruciatus (Urolophus)	21		
cuspidatus (Pristis)	14		

INDEX.

	PAGE		PAGE
<i>marmorata</i> (Torpedo) ...	16	Rhinidæ ...	12
<i>maximus</i> (Cetorhinus) ...	6	Rhinobatidæ ...	14
<i>melanopterus</i> (Carcharias) ...	2	Rhinobatus ...	14
<i>melanostomus</i> (Pristiurus) ...	7	Rhynchobatus ...	14
<i>menisorrah</i> (Carcharias) ...	2	<i>rondeletii</i> (Carcharodon) ...	5
<i>miolapis</i> (Ceratodus) ...	24	<i>rostrata</i> (Raia) ...	17
<i>modestum</i> (Chiloscyllium) ...	8	<i>ruthenus</i> (Acipenser) ...	25
<i>monstrosa</i> (Chæmera) ...	23		
<i>mortoni</i> (Tæniura) ...	20	<i>salviani</i> (Centrina) ...	11
Mustelus ...	4	<i>scabra</i> (Raia) ...	17
Myliobatidæ ...	22	Scylliidæ ...	6
Myliobatis ...	22	Scyllium ...	6
		Scymnus ...	12
<i>naccarii</i> (Acipenser) ...	25	Selachoidæ ...	1
<i>narce</i> (Torpedo) ...	16	<i>semifasciata</i> (Triacis) ...	4
Narcine ...	16	<i>sephen</i> (Trygon) ...	20
<i>narinari</i> (Aëtobatis) ...	22	Sirenidæ ...	24
<i>neglecta</i> (Chimæra) ...	23	Spinacidæ ...	11
<i>niger</i> (Spinax) ...	11	Spinax ...	11
Notidanidæ ...	6	<i>spinus</i> (Echinorhinus) ...	12
Notidanus ...	6	Squalus ...	11
<i>nuchale</i> (Parascyllum) ...	8	<i>squatina</i> (Rhina) ...	12
		Stegostoma ...	7
<i>obscurum</i> (Chiloscyllium) ...	8	<i>sturio</i> (Acipenser) ...	25
<i>ocellatum</i> (Chiloscyllium) ...	8	<i>subnigrum</i> (Hypnos) ...	16
Odontaspis ...	5		
<i>osseus</i> (Lepidosteus) ...	26	Tæniura ...	20
<i>oxyrhynchus</i> (Acipenser) ...	25	<i>testaceus</i> (Urolophus) ...	21
		<i>tigrinum</i> (Stegostoma) ...	7
Palæichthyes ...	1	<i>tigrinus</i> (Galeocerdo) ...	3
Parascyllum ...	7	<i>timlei</i> (Narcine) ...	16
<i>pastinaca</i> (Trygon) ...	19	Torpedinidæ ...	16
<i>pectinatus</i> (Pristis) ...	14	Torpedo ...	16
<i>phillipi</i> (Heterodontus) ...	9	Triacis ...	4
Pisces ...	1	<i>triseriatus</i> (Rhinobatus) ...	18
Plagiostomata ...	1	Trygon ...	19
<i>plagiosum</i> (Chiloscyllium) ...	8	Trygonidæ ...	18
Platyrhina ...	18	Trygonorhina ...	15
Polyodon ...	25	<i>tuberculata</i> (Trygon) ...	20
Polyodontidæ ...	25	tudes (Zygæna) ...	4
Polypteridæ ...	25		
Polypteroidei ...	25	<i>uarnak</i> (Trygon) ...	19
Polypterus ...	25	Urogymnus ...	18
Pristidæ ...	13	Urolophus ...	21
Pristiophoridæ ...	13		
Pristiophorus ...	13	<i>variolatum</i> (Parascyllum) ...	7
Pristis ...	13	<i>viridis</i> (Lepidosteus) ...	26
Pristiurus ...	7	<i>vulgaris</i> (Acanthias) ...	11
<i>productus</i> (Rhinobatus) ...	15	<i>vulgaris</i> (Galeus) ...	3
Protopterus ...	24	<i>vulgaris</i> (Mustelus) ...	4
Pteroplatea ...	22	<i>vulpes</i> (Alopias) ...	5
<i>pusillus</i> (Spinax) ...	12		
		<i>walga</i> (Trygon) ...	19
Raia ...	17	<i>zebra</i> (Heterodontus) ...	10
Raiidæ ...	17	<i>zugei</i> (Trygon) ...	20
<i>rayneri</i> (Galeocerdo) ...	2	Zygæna ...	3
Rhina ...	12	<i>zysron</i> (Pristis) ...	13



PUBLICATIONS OF THE AUSTRALIAN MUSEUM.

JULY, 1888.

-
- CATALOGUE OF THE SPECIMENS OF NATURAL HISTORY AND MISCELLANEOUS CURIOSITIES IN THE AUSTRALIAN MUSEUM, by G. Bennett. 1837. 8vo, pp. 71. (Out of print.)
- HISTORY AND DESCRIPTION OF THE SKELETON OF A NEW SPERM WHALE IN THE AUSTRALIAN MUSEUM, by W. S. Wall. 1851. 8vo, pp. 66, with 2 plates. Reprint 1887. Wrappers 2s. 6d.
- CATALOGUE OF MAMMALIA IN THE COLLECTION OF THE AUSTRALIAN MUSEUM, by G. Krefft. 1864. 12mo, pp. 133. (Out of print.)
- GUIDE TO THE AUSTRALIAN FOSSIL REMAINS IN THE AUSTRALIAN MUSEUM. 1870. 8vo. (Out of print.)
- CATALOGUE OF THE MINERALS AND ROCKS IN THE COLLECTION OF THE AUSTRALIAN MUSEUM, by G. Krefft. 1873. 8vo, pp. xvii.-115. (Out of print.)
- CATALOGUE OF THE AUSTRALIAN BIRDS IN THE AUSTRALIAN MUSEUM, by E. P. Ramsay. Part I., Accipitres. 1876. 8vo, pp. viii.-64. Boards, 2s.; cloth, 3s.
- CATALOGUE OF THE AUSTRALIAN STALK- AND SESSILE-EYED CRUSTACEA, by W. A. Haswell. 1882. 8vo, pp. xxiv.-324, with 4 plates. Wrapper, scarce, 21s.
- GUIDE TO THE CONTENTS OF THE AUSTRALIAN MUSEUM. 1883. 8vo, pp. iv.-56. Wrapper, 3d.
- CATALOGUE OF THE LIBRARY OF THE AUSTRALIAN MUSEUM. 1883. 8vo, pp. 178. Wrapper, 1s. 6d., with two supplements.
- CATALOGUE OF A COLLECTION OF FOSSILS IN THE AUSTRALIAN MUSEUM, WITH INTRODUCTORY NOTES, by F. Ratte. 1883. 8vo, pp. xxviii.-160. Wrapper, 2s. 6d.
- CATALOGUE OF THE AUSTRALIAN HYDROID ZOOPHYTES, by W. M. Bale. 1884. 8vo, pp. 198, with 19 plates. Wrapper, 3s. 6d.
- LIST OF OLD DOCUMENTS AND RELICS IN THE AUSTRALIAN MUSEUM. 1884. 8vo, pp. 4.
- DESCRIPTIVE CATALOGUE OF THE GENERAL COLLECTION OF MINERALS IN THE AUSTRALIAN MUSEUM, by F. Ratte. 1885. 8vo, pp. 221, with a plate. Boards, 2s. 6d.; cloth, 3s. 6d.
- CATALOGUE OF ECHINODERMATA IN THE AUSTRALIAN MUSEUM, by E. P. Ramsay. Part I., Echini. 1885. 8vo, pp. iii. ii.-54. 5 plates. Wrapper, 2s. 6d.; cloth, 3s. 6d.
- DESCRIPTIVE LIST OF ABORIGINAL WEAPONS, IMPLEMENTS, &c., FROM THE DARLING AND LACHLAN RIVERS. 1887. 8vo, pp. 8.
- NOTES FOR COLLECTORS. 1887. 8vo, 1s. Containing—
Hints for the Preservation of Specimens of Natural History, by E. P. Ramsay, pp. 17.
Hints for Collectors of Geological and Mineralogical Specimens, by F. Ratte, pp. 26, with a plate. (The two parts may be obtained separately. Price, 6d. each.)
- DESCRIPTIVE CATALOGUE OF THE MEDUSÆ OF THE AUSTRALIAN SEAS. Part I., Scyphomedusæ. Part II., Hydromedusæ, by R. von Lendenfeld. 1887, 8vo, pp. 32 and 49. Boards, 2s. 6d.; cloth, 3s. 6d.
- DESCRIPTIVE CATALOGUE OF THE NESTS AND EGGS OF AUSTRALIAN BIRDS, by A. J. North.
- DESCRIPTIVE CATALOGUE OF THE SPONGES IN THE AUSTRALIAN MUSEUM, by R. von Lendenfeld. Boards, 7s. 6d.; cloth, 10s. 6d.
- CATALOGUE OF THE FISHES IN THE AUSTRALIAN MUSEUM, Part I., Palæichthyan Fishes, by J. Douglas Ogilby, 1888, pp. 34. Wrapper 2s. 6d.; boards 3s. 6d.

In Preparation :—

- CATALOGUE OF THE LIBRARY. Revised and corrected.
- GUIDE TO THE MUSEUM. New Edition.
- CATALOGUE OF SHELLS. Hargraves and General Collections, by J. Brazier.
- CATALOGUES OF LIZARDS, BATRACHIA, FISHES, &c., by J. D. Ogilby.
- CATALOGUE OF BUTTERFLIES, by A. S. Olliff.
- REPORTS ON LORD HOWE ISLAND, Edited by E. P. Ramsay and R. Etheridge.