

Canon

imageRUNNER®
2230 / 3530



imageRUNNER®
2230 / 3530

ACHIEVE MORE WITHOUT EXHAUSTING YOUR BUDGET.

A new lineup of powerful Canon
multifunction office systems
that can take your business to
a higher level.



Your growing business is unique. You need greater productivity as well as the flexibility to shape office solutions around your specific needs. That's why you need the Canon imageRUNNER 2230/3530 digital multifunction office systems.

Take command of your office productivity, starting with a standard copier configuration, and build a system to meet your printing, scanning, faxing, and document storage needs as your business dictates. The latest ImagePlatform architecture ensures concurrent processing of each task for maximum productivity every time, for every job.

And when the imageRUNNER 2230/3530 devices are fully connected to your network, all users can leverage system capabilities directly from their desktops through intuitively designed drivers—complete with finishing and paper supply functions. All this in an extremely compact, cost-effective system your business can count on.



INTRODUCING THE imageRUNNER 2230/3530

imageRUNNER 2230

With the ability to deliver output at 22 pages per minute, the compact imageRUNNER 2230 model is perfect for small businesses and workgroups.



imageRUNNER 3530

At 35 pages per minute, the imageRUNNER 3530 is an ideal solution for busier, medium-size offices and departments within larger corporations.

| Feature | Standard Configuration | Available with optional Hard Disk and Additional Memory* |
|-----------------|------------------------|--|
| Memory Capacity | RAM: 128MB | RAM: 256MB Hard Disk: 20GB |
| Copy | Standard | Standard |
| Mail Box | Optional* | Standard |
| Network Print | Optional* | Standard (UFR II or UFR II/PCL 5e/6) |
| Network Scan | Optional* | Standard |
| Fax | Optional*† | Optional† |

* Requires additional 20GB Hard Disk and 128MB RAM (ships with the UFR II/PCL Printer Kit-E2).

† Requires the Super G3 Fax Board-Q1 with optional 20GB Hard Disk and additional 128MB RAM to be installed.

A SINGLE DEVICE THAT CAN DO THE WORK OF MANY

In addition to enhancing productivity, the imageRUNNER 2230/3530 devices save space and reduce costs.

Compact, Durable Design

The incredibly compact imageRUNNER 2230/3530 models are built to accommodate busy office environments with limited space. High-yielding supplies and consumables keep running costs and downtime to a minimum for top-notch efficiency. And thanks to an easy-to-load bottle design, toner replenishment is quick and clean.

An optional 50-sheet Duplexing Automatic Document Feeder easily handles multiple-page originals so you can focus on other tasks. The system handles various paper formats, from A5-R to A3, with a maximum paper capacity of 2,250 sheets to keep your business moving. The imageRUNNER 2230/3530 devices also support a range of output options to increase productivity, including an innovative built-in finishing option that offers full sorting, stapling, and optional hole-punching, without taking up any extra space.

Ease-of-Use

The imageRUNNER 2230/3530 models are designed for easy operation at the device through an intuitive touch-screen panel or at a desktop using a Remote UI™** (User Interface) that allows users to control operations via their Web browser. Canon also provides a complete set of device management and monitoring utilities embodied in the NetSpot® Suite. As an ENERGY STAR® qualified system, the imageRUNNER 2230/3530 systems are designed with the environment in mind.

Image of a Leader

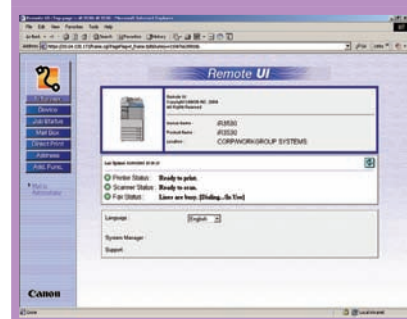
Canon continues to set new standards for quality, performance, and reliability. That's why you can trust Canon to provide you with solutions to make your business more productive and competitive.



Control Panel



Remote UI



** Requires UFR II/PCL Printer Kit-E2.

A FIRST IMPRESSION ALWAYS LASTS.

Make Your Business Stand Out From All the Others.

Produce High-Quality Digital Copies with Confidence

The imageRUNNER 2230/3530 models are designed to make your documents look their best. These systems can capture images at true 600 x 600 dpi resolution and produce high-quality output for both text and images—equivalent to 1200 x 600 dpi for copying and 2400 x 600 dpi for printing, with 256 gradations. Each model hosts a number of productivity-enhancing copy features that save time and money. Standard Automatic Duplexing provides two-sided printing to conserve time and paper. Also, with Canon's RAPID Fusing System™, warm-up times and energy consumption costs are kept to a minimum.

A Multifunctional Delight

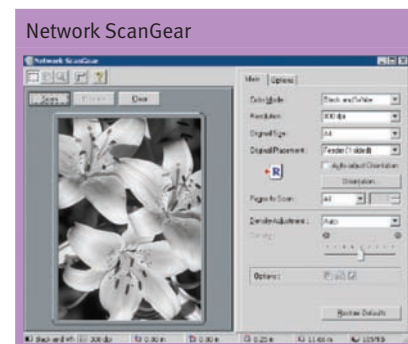
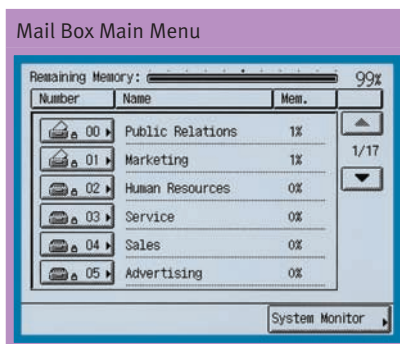
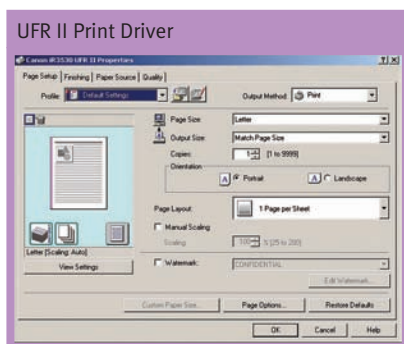
The imageRUNNER system, when equipped with an optional printer kit, is transformed into a productive multifunction device that can greatly improve your workflow. As networked printers, the imageRUNNER 2230/3530 devices support the latest Canon Ultra Fast Rendering II (UFR II) technology for fast document processing, and available support for popular PCL 5e/6 page description languages. And with the Canon

Network ScanGear utility** you can easily integrate scanned images with your documents using TWAIN-compatible software.

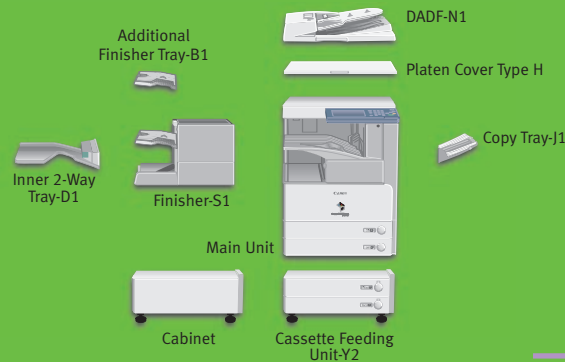
Innovative Mail Box features** provide the ability to store scanned documents and printed files directly into device memory for later use. Each Mail Box can be customized and password-protected for complete confidentiality.

Powerful Document Distribution

The imageRUNNER 2230/3530 systems can handle all your heavy-duty faxing needs when equipped with the optional Super G3 Fax Board.** Time-saving features include a high-capacity address book and auto-dialing to speed operation, as well as PC Fax capabilities that allow you to transmit fax documents easily from a networked computer.



** Requires UFR II/PCL Printer Kit-E2.



imageRUNNER®
2230/3530

imageRUNNER 2230/3530 Specifications

| | |
|--------------------------------------|--|
| Type: | Digital, Multifunction Imaging System |
| Imaging System: | Laser Dry Electrostatic Transfer |
| Developing System: | Dry Mono Component Developing System |
| Fixing System: | RAPID Fusing System |
| Image Server Memory | |
| Standard: | 128MB RAM |
| Optional: | 256MB RAM/20GB HDD |
| First-copy Time | |
| imageRUNNER 2230: | 4.9 Seconds from Platen Glass |
| | 6.9 Seconds from Feeder |
| imageRUNNER 3530: | 3.9 Seconds from Platen Glass |
| | 5.9 Seconds from Feeder |
| Warm-up Time: | 10 Seconds or Less from Sleep Mode |
| | 15 Seconds or Less from Main Power Off |
| | 30 Seconds or Less from Main Power Off when configured with either printer kit |
| Copy/Print Speed: | 22/35 ppm (A4) |
| Max. Copy Reservation: | +5 Jobs |
| Actual Resolution: | 600 dpi x 600 dpi |
| Interpolated Resolution: | 1200 dpi x 600 dpi (Copy) |
| | 2400 dpi x 600 dpi (Print) |
| Halftone: | 256 Gradations of Gray |
| Duplexing: | Standard Automatic Trayless Duplexing |
| Magnification Reduction/Enlargement: | 25% to 400%—Platen |
| | 25% to 200%—Feeder |
| | (in 1% increments) |
| Exposure Control: | Automatic or Manual (9 Levels) |
| Paper Sources | |
| Standard: | Dual 550-sheet Paper Cassettes (1,100 Sheets) |
| | Stack Bypass (50 Sheets) |
| Optional: | Dual 550-sheet Cassette Feeding Unit (2,250 Sheets Max.) |
| Multiple Copies: | 1 to 999 |
| Paper Weights: | 64-80 g/m ² (Cassette) |
| | 64-128 g/m ² (Stack Bypass) |
| Network Interface | |
| Connections: | 10/100Base-T (RJ-45) |
| Dimensions (H x W x D): | 29-7/8" x 22-1/4" x 27-5/8" (761mm x 565mm x 700mm) |
| Installation Space: (W x D): | 34" x 27-5/8" |
| Weight: | 69kg |
| Power Requirements: | 230V/6A/50Hz |
| Power Consumption: | 1.35kW (Max.) |

| | |
|--|---|
| Drum: | Organic Photo Conductor (OPC) |
| Estimated Yield: | 75,000 Impressions (2230) |
| | 85,000 Impressions (3530) |
| Toner Yield: | 21,000 @ 6% Coverage (2230) |
| | 24,000 @ 6% Coverage (3530) |
| Optional Accessories | |
| Duplexing Automatic Document Feeder-N1 | |
| Acceptable Originals: | A5 to A3 |
| Capacity: | 50 Sheets (80g/m ² /A4) |
| Max. Paper Weight: | 42 to 128g/m ² |
| Cassette Feeding Unit-Y2 | |
| Paper Capacity: | Dual 550-sheet Paper Cassettes (1,100 Sheets/80g/m ²) |
| Acceptable Paper Sizes: | A5-R to A3 |
| Acceptable Paper Weights: | 64 to 80g/m ² |
| Inner 2-Way Tray-D1* | |
| Number of Trays: | 2 Trays |
| Tray Capacity | |
| Lower Output Tray: | 250 Sheets (A4) |
| Upper Output Tray: | 100 Sheets (A4) |
| Acceptable Paper Sizes: | A5 to A3 |
| Attachable Accessories: | Copy Tray-J1 |
| Finisher-S1* | |
| Number of Trays: | 1 Tray (Second Tray Optional) |
| Tray Capacity | |
| Non-collate, Collate, | |
| Group Mode: | 1,000 Sheets (A4) |
| Staple Mode: | 1,000 Sheets |
| Tray Capacity (with Additional Finisher Tray-B1) | |
| Non-collate, Collate, | |
| Group Mode: | 300 Sheets per Tray (A4) |
| Staple Mode: | 300 Sheets |
| Staple Position/Size: | Corner Stapling |
| Max. Stapling Capacity (Up to 20 lb. Bond): | 50 Sheets (A4) |
| Attachable Accessories: | Additional Finisher Tray-B1 |
| | Puncher Unit-Q1 |
| | Copy Tray-J1 |

| | |
|---|--|
| Copy Tray-J1 (option for Inner 2-Way Tray and Finisher-S1) | |
| Tray Capacity: | 150 Sheets (A4) |
| Super G3 Fax Board-Q1 | |
| Applicable Line: | Public Switched Telephone Network (PSTN) |
| Connection Lines: | One |
| Sending/Original Sizes: | A5 to A3 (from Document Feeder) |
| Recording/Printing Sizes: | A5 to A3 |
| UFR II/PCL Printer Kit-E2 | |
| Processor: | Canon Custom Processor—Shared |
| RAM: | 256MB—Shared |
| Hard Disk: | 20GB—Shared |
| PDL Support | |
| UFR II Printer Kit-E3: | UFR II |
| UFR II/PCL Printer Kit-E2: | UFR II/PCL |
| Interface Connections | |
| Standard: | 10/100 Base-T (RJ-45), USB 2.0 High-speed |
| Network OS: | Windows® 98/Me* Windows 2000/XP Windows NT* 4.0*/Server 2003 Macintosh® OS 10.1.5 or Later (PPD) Solaris™ 1.1x, 2.5x, or Later Novell® NetWare® v3.2, 4.1, 4.11, 4.2, 5, 5.1, 6, 6.5 (IPX/SPX™) |
| Additional Optional Accessories and Utilities | |
| Platen Cover Type H | |
| Envelope Feeder Attachment-C1 | |
| Card Reader-C1 | |
| Card Sets | |
| imageRUNNER Security Kit-A2 | |
| * Requires 3-Way unit. | |
| * UFR II not supported. | |
| * Requires optional IR System Expansion Kit-A1. | |

Canon

Regional office:
Canon Singapore Pte Ltd
1 HarbourFront Avenue
#04-01 Keppel Bay Tower
Singapore 098632
Tel: 65-6799 8888
Fax: 65-6799 8882

Distributors & representative Offices:

| | |
|--------------------|---|
| Bangladesh: | Flora Limited Afamee Court Annex-2 (4th Floor) 119-120 Motijheel Commercial Area Dhaka 1000 Bangladesh Tel: 880-2-956 7846 / 7162742-46 Fax: 880-2-955 0030 |
| Brunei: | INTERHOUSE COMPANY No 5-7 Bunut Jaya Complex Spg 574, Jalan Tutong, BF1320 P.O. Box 423, Seri Complex Bandar Seri Begawan, BA 1779 Brunei Darussalam Tel: 673-2-653001 Fax: 673-2-653003 |
| Cambodia: | Royal Cambodia Co., Ltd #427 Preab Monivong Blvd. Phnom Penh Kingdom of Cambodia Tel: 855-23-428955 Fax: 855-23-722961 |
| Hong Kong: | Canon Hongkong Co. Ltd 19/F, The Metropolis Tower, 10 Metropolis Drive, Hungghom, Kowloon, Hong Kong Tel: 852-2170 2828 Fax: 852-2723 9684 |

| | |
|-------------------|--|
| India: | Canon India PVT.Ltd. 2nd Floor, Tower A&B Cyber Greens, DLF Phase III Gurgaon-122002 Haryana, India Tel: 91-124-516 0000 Fax: 91-124-516 0011 |
| Indonesia: | PT Samafitro Jalan Ir. H Juanda No. 8 Jakarta 10120 Indonesia Tel: 62-21-365 5521 Fax: 62-21-384 4271 |
| Malaysia: | Canon Marketing (Malaysia) Sdn Bhd Block D, Peremba Square Saujana Resort Section U2 40150 Shah Alam Selangor Darul Ehsan, Malaysia Tel: 60-3-7844 6000 / 7845 0055 Fax: 60-3-78446196/6198 |
| Maldives: | SIMDI Company Pte. Ltd. No. 3, Koli Umaru Maniku Goalhi Male* 20-02 Republic of Maldives Tel: 960-324 819 Fax: 960-310 549 |
| Myanmar: | Accel International Co. Ltd. FJV Commercial Centre, Level 6, No. 422 - 426 Strand Road, Botataung Township, Yangon, Myanmar Tel: 95-1-202092 to 96 Fax: 95-1-202079 |
| Nepal: | International Electronics Concern (P) Ltd. Kha 14 1st Floor Haratibhawan Putalisadak Ramshah Path Kathmandu Nepal P.O.Box 12588 Tel: 977-1-4421 991 Fax: 977-1-4421 909 |

| | |
|---------------------|--|
| Pakistan: | Shirazi Trading Company (Pvt) Ltd. 2nd Floor Nadir House I.I. Chundrigar Road Karachi 74000, Pakistan Tel: 92-21-242 4075 Fax: 92-21-241 4998 |
| Philippines: | Canon Marketing (Philippines) Inc. Marvin Plaza Building 2153 Don Chino Rocas Avenue Makati City Metro Manila Philippines Tel: 632-812 6047 Fax: 632-812 0067 |
| Sri Lanka: | Metropolitan Office (Pvt) Ltd. 12, Magazine Road Colombo 08, Sri Lanka Tel: 94-11-2437797 Fax: 94-11-2448980 |
| Thailand: | Canon Marketing (Thailand) Co. Ltd. 10th Floor Bangkok City Tower 179/34-45 South Sathorn Road Bangkok 10120 Tel: 66-2-344 9999 Fax:66-2- 344 9960 |
| Vietnam: | Canon Singapore Pte. Ltd Ho Chi Minh City Representative Office 11 Me Linh Square, Ho Huan Nghiep St. Ground Floor, Dist.1, HCM City, Vietnam Tel: 848- 8277311 Fax:848- 8277283 |
| | Hanoi City Representative Office Unit 601 and 602, 6th Floor, Viet Au Building 205 Giang Vo, Hanoi Tel: 844- 5121033 Fax: 844- 5121022 |

0051W392 © Canon Singapore Pte Ltd 2005
Printed in Singapore

Specifications are subject to change without notice. Option names and availability may vary by region. PostScript and PostScript 3 are trademarks of Adobe Systems Incorporated, registered in certain jurisdictions. Microsoft and Windows are registered trademarks of Microsoft Corporation in the United States and other countries. All other brand and product names are trademarks and/or registered trademarks of their respective owners.