

Large Format Printers

Canon

 **imagePROGRAF**

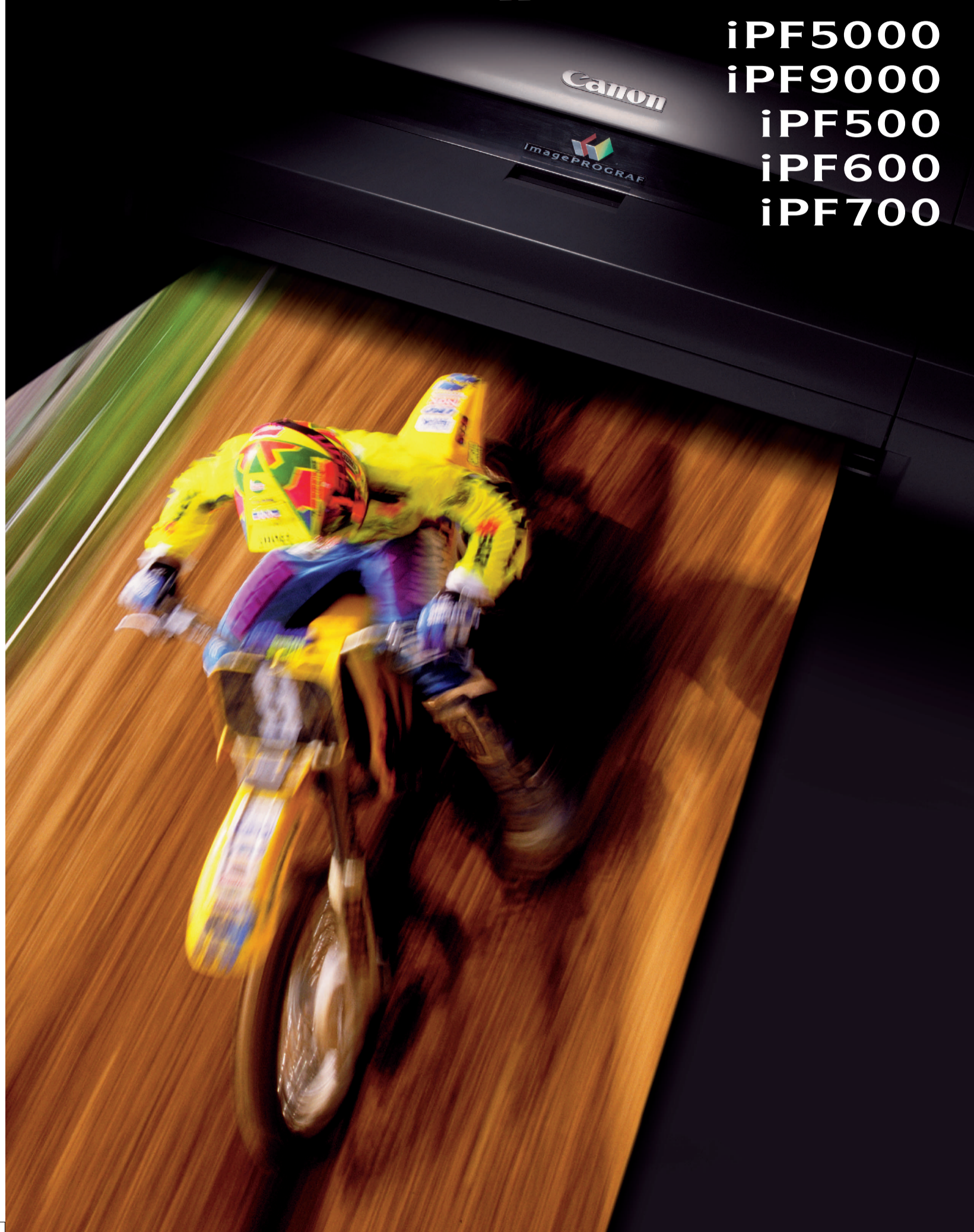
iPF5000

iPF9000

iPF500

iPF600

iPF700



12Colors
iPF5000

NEW

iPF5000

SIZE		IMAGE QUALITY	
17 inch	2400 x 1200dpi (max)	4 pl	12 COLORS
SPEED		PRINTING	
30,720 nozzles	L-COA image processor	Long banner	Borderless
HIGH PRODUCTIVITY			
130ml ink tank	Roll media (optional)	Cassette/manual feed (top-front loading)	Roll remaining detection (optional)
Roll/cassette auto switch (optional)	High-performance cutter	Ink level detection	Non-firing detection and compensation
INTERFACE		OTHERS	
Network	USB 2.0 Hi-Speed	IEEE 1394 (optional)	Desktop installation
STANDARD SOFTWARE			
Printer Driver 2006	Poster Artist 2006	Plug-In for Digital Photo Professional	Plug-In for Photoshop
Digital Photo Print Pro	Media Configuration Tool		
LUCIA ink FINE Full-bleed lithography Inkjet Finest Inkjet Engineering			
Size	Media	Mode	Print speed
A2	Plain paper/cassette	Draft	Apx. 0.8 min.
	Glossy photo paper/roll	Standard	Apx. 2.5 min.



*With optional Auto Roll Feed Unit *For the printing conditions, refer to the end of this catalog.

Note: Model shown includes optional Auto Roll Feed Unit

Full frontal operation for ease of use.

Paper feed from roll and cassette is performed at the front of the printer. Settings are controlled easily at the front operation panel. And ink tanks are also easily changed at the front.

■ Roll paper and cut sheets are easily changed at the front

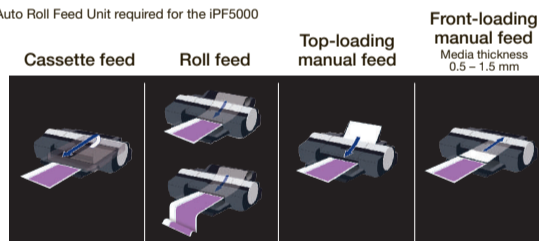


Note: With optional Auto Roll Feed Unit

4 media-feed methods—roll, cassette and manual from 2 directions.

The iPF5000 features 4 media-feed methods: roll*, cassette, top-loading manual and front-loading manual. Media up to 1.5 mm thick can be inserted in front-loading manual feed. The cassette holds 250 sheets of plain paper. When both the cassette and roll paper are loaded at the same time, you simply select the media-feed method on the printer driver and the printer automatically switches to the correct media.

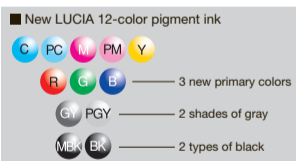
*Optional Auto Roll Feed Unit required for the iPF5000



New LUCIA 12-color pigment ink delivers professional graphic-art quality.

NEW LUCIA ink

New 12-color LUCIA pigment inks feature 3 special color inks and 2 gray shades. The large color gamut enables the output of brilliant hues and tones on a wide variety of media, including glossy, art, matte and signage. New LUCIA pigment inks offer exceptional permanence for beautiful long-lasting prints.



2 types of gray inks offer smoother gradations and less graininess, and minimize color shift.

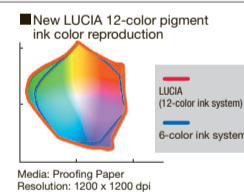
NEW

From the highlights to the shadows of monochrome photographs, our new gray and photo gray inks, in combination with our superior black inks, help to ensure rich gradation with less graininess. Furthermore, by reducing the use of color ink, LUCIA produces more stable, higher-quality monochrome expression, thus avoiding color shift.

Red, green and blue inks expand the range of color reproduction.

NEW

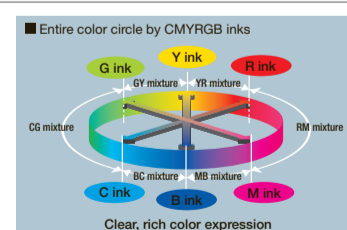
The addition of red, green and blue inks meets a wider range of professional needs, such as digital photo prints and posters requiring more vivid colors.



LUCIA: New ink system with 3 primary colors. New color clarity from a pigment inkjet printer.

NEW

The iPF5000/iPF9000 with the new LUCIA ink system features 3 primary colors. The 3 new inks—red, green, and blue (RGB)—are used alongside conventional C (cyan), M (magenta) and Y (yellow). By using these RGB inks, which are symmetrical in hue to the CMY inks, you get distortion-free, well-balanced and clear color expression over the entire color circle.



NEW

iPF9000

SIZE IMAGE QUALITY

60 inch	2400 x 1200dpi (max)	4 pl	12 COLORS
------------	-------------------------------	------	--------------

SPEED PRINTING

30,720 nozzles	L-COA image processor	Long banner	Borderless
-------------------	-----------------------------	----------------	------------

HIGH PRODUCTIVITY

330ml 700ml ink tank (optional)	Roll remaining detection	Ink level detection	Non-firing detection and compensation
--	--------------------------------	---------------------------	--

Media Take-up Unit	High- performance cutter	HDD
--------------------------	--------------------------------	-----

INTERFACE

Network	USB 2.0 Hi-Speed	IEEE 1394 (option)
---------	---------------------	--------------------------

STANDARD SOFTWARE

Printer Driver 2006	Poster Artist 2006	Plug-In for Photoshop	Digital Photo Print Pro	Media Configuration Tool
---------------------------	--------------------------	-----------------------------	-------------------------------	--------------------------------

L-COA ink	LUCIA ink	FINE Full-page high-resolution 1440 x 720 Dye Engineering
--------------	--------------	---

Size	Media	Mode	Print speed
A0	Heavyweight coated paper, roll	Standard	Apx. 5 min.

60"
12
COLORS

*For the printing conditions, refer to the end of this catalog.



Large graphical LCD panel presents key information simply and logically.

The LCD panel constantly displays the selected media type, ink level and other key operational information. For primary procedures such as media changing, ink changing and error recovery, easy step-by-step instructions are displayed on the panel in an animated graphical format, which enables easy intuitive operation without the need to refer to the manual.



Accepts both 330-ml and 700-ml ink tanks. Choose according to your level of use.

The iPF9000 accepts both 330-ml and 700-ml ink tanks. For frequently used colors, use the 700-ml size to minimize the work needed for changing the tanks. You can use insert any combination of the two sizes for efficient management of ink use.



Media Take-up Unit comes standard.

The Media Take-up Unit automatically rewinds roll media as it is output, allowing continuous printing, which reduces manpower needs and improves productivity. This feature is extremely valuable for continuous running at night and unattended operation.



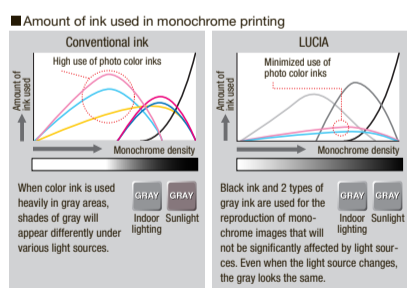
Embedded hard disc drive handles many operations, freeing up the host computer.

An embedded high-capacity hard disc drive improves productivity in several ways. Multiple printing jobs are saved to the disc, freeing up host computers for other work. If a printing error occurs, printing can be resumed from the job data saved onto the disc without using the host computer, and from the Status Monitor as well. After transferring jobs to the hard disc drive, the host computer can be shut down, so unmanned overnight printing is possible.

Reduced color ink usage and metamerism.

NEW

Metamerism, the difference in how a color appears under different light sources, often occurs when color ink is applied to produce monochrome. Employing mainly gray and photo gray ink rather than color ink in monochrome expression helps to prevent metamerism. You get superior quality without worry about the effects of different light sources.



Automatic switching of black inks enhances work speed.

NEW

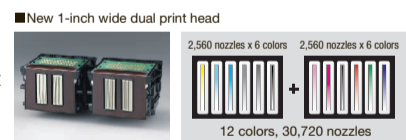
The pigment black ink ensures excellent color reproduction on photo paper while the pigment matte black ink produces ultra-dense black on matte paper. Both inks are simultaneously loaded in the printer. Whenever you switch media types, optimal ink is automatically used. The result: improved work efficiency and less wasted ink.



New 1-inch wide dual print head system delivers blazing speed and optimal image quality.

NEW

Unlike conventional printers, the iPF5000 and iPF9000 feature a dual 1-inch wide print head. There are 2,560 nozzles for each of the 12 colors, a total of 30,720 nozzles. The unrivalled nozzle density enables printing of high quality images at remarkable speed.

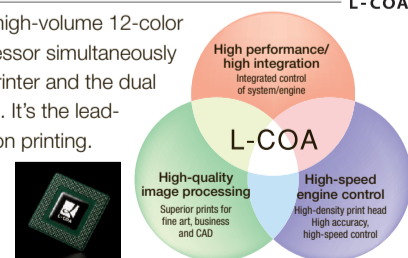


Innovative L-COA image processor intelligently increases image-processing speed.

NEW



For high-speed processing of high-volume 12-color image data, an exclusive processor simultaneously controls the operation of the printer and the dual high-density print head system. It's the leading-edge brain for high-precision printing.



5Colors
iPF500

NEW

iPF500

SIZE IMAGE QUALITY

17 inch 2400 x 1200dpi (max) 4 pl 5 COLORS

SPEED PRINTING

15,360 nozzles L-COA image processor Long banner Borderless

HIGH PRODUCTIVITY

130ml ink tank Roll media (option) Cassette/manual feed (top-front loading) Roll remaining detection (option) Ink level detection Non-firing detection and compensation Roll/cassette auto switch (option) High-performance cutter

INTERFACE OTHERS

Network USB 2.0 Hi-Speed IEEE 1394 (option) Desktop installation

STANDARD SOFTWARE

Printer Driver 2006 Poster Artist 2006 HDI Driver Media Configuration Tool

FINE
Full-Color Imaging from
Nozzle Engineering

Size	Media	Mode	Print speed
A2	Plain paper/cassette	Draft	Apx. 0.3 min.
	Glossy photo paper/roll*	Standard	Apx. 1.6 min.

*With optional Auto Roll Feed Unit *For the printing conditions, refer to the end of this catalog.



New 5-color dye and pigment reactive ink system reproduces text and line drawings sharply and colors vividly.

2 ink tanks of pigment matte black ink are loaded to maximize black density on plain paper. Dye black ink produces beautifully smooth tones on photo glossy paper. The new dye inks offer improved color fastness to light and gas. The 5-color image-PROGRAF series handles various media, covering the needs for CAD/GIS, posters, business documents and more.

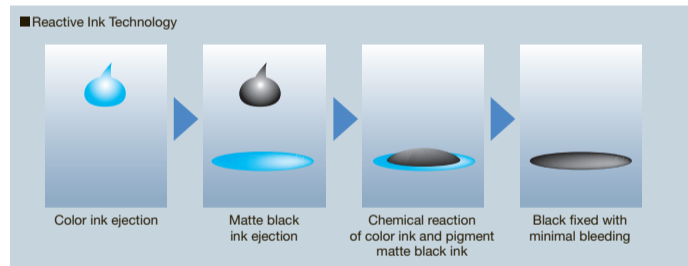


■ New 5-color dye and pigment reactive ink system



Reactive Ink Technology minimizes boundary smudge on color.

Proprietary Reactive Ink Technology eliminates boundary smudge by controlling the reaction between pigment matte black ink and dye color ink. With the improved fixing quality of black ink, you get crisper results where black line drawings and/or text appear next to color, such as in CAD drawings and graphs.

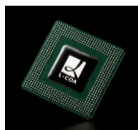
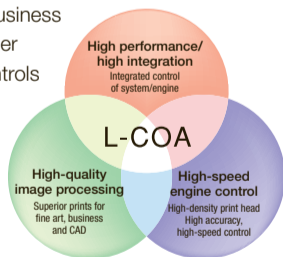


(image diagram)

Innovative L-COA image processor delivers high-speed image processing.



L-COA ensures high-speed processing of business documents, CAD drawings, posters and other high-volume data. It also simultaneously controls the operation of the printer and the high-density single print head system for our new 5-color dye and pigment reactive ink. This single chip is the leading-edge brain for high-resolution printing.

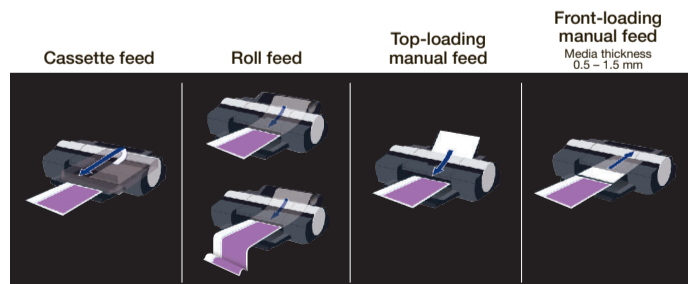


4 media-feed methods—roll, cassette and manual from 2 directions.

iPF500 / iPF600

The iPF500 and iPF600 feature 4 media-feed methods: roll*, cassette, top-loading manual and front-loading manual. Media up to 1.5 mm thick can be inserted in front-loading manual feed. The cassette holds 250 sheets of plain paper. When both the cassette and roll paper are loaded at the same time, you simply select the media-feed method on the printer driver and the printer automatically switches to the correct media.

*Optional Auto Roll Feed Unit required for the iPF500



NEW

iPF600

SIZE	IMAGE QUALITY
24 inch	2400 x 1200dpi (max)
4 pl	5 COLORS

SPEED	PRINTING
15,360 nozzles	L-COA image processor
Long banner	Borderless

HIGH PRODUCTIVITY			
130ml ink tank	Roll media	Cassette/manual feed (top/front loading)	Roll remaining detection (option)
Ink level detection	Non-firing detection and compensation	Roll/cassette auto switch	High-performance cutter

INTERFACE	OTHERS
Network	USB 2.0 Hi-Speed
IEEE 1394 (option)	Desktop installation

STANDARD SOFTWARE			
Printer Driver 2006	Poster Artist 2006	HDI Driver	Media Configuration Tool



Size	Media	Mode	Print speed
A1	Plain paper/roll	Draft	Apt. 0.6 min.
	Glossy photo paper/roll	Standard	Apt. 2.8 min.
A1 CAD	Plain paper/roll	Draft	Apt. 0.6 min.

*For the printing conditions, refer to the end of this catalog.

5Colors iPF600



Note: Model shown includes optional Printer Stand

High-precision line reproduction with ±0.1% accuracy.

Accurate reproduction of ultra-thin lines and extra small text is crucial for CAD applications. The 5-color imagePROGRAF series reproduces lines as thin as 0.02 mm*1 with range accuracy of ± 0.1%*2. Diagonal and curved lines are reproduced more smoothly and smaller text more sharply in 1200 dpi rendering.

*1 Theoretical value. Results may vary according to data resolution.

*2 User adjustments necessary. Printing environment and media to be printed must match that used for the adjustments. CAD paper required: plain paper, coated paper, CAD tracing paper and CAD translucent matte film

■ 1200 dpi rendering technology

	Mode	Photo
iPF500 iPF600 iPF700	Line/text High 1200 dpi	
Conventional dye ink printer	CAD High 600 dpi	

Ink level detection

Ink levels are displayed and a warning is issued whenever ink runs low. A smart chip in each tank stores information on the remaining amount of ink, so even if a tank is changed in mid-use, when it is reinserted, ink amount is correctly detected. For further convenience, an ink lamp issues warnings for incorrect installation and low ink levels.



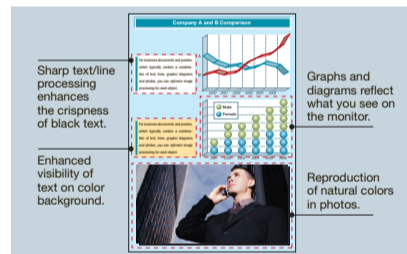
The optimal black for the media type is automatically selected. Switching ink tanks not required.

Black dye ink serves best on glossy paper, while pigment matte black ink achieves the best high-density expression on plain and CAD paper. With the 5-color imagePROGRAF series, you load both inks together and the right one is automatically selected for the type of media used. For business documents, CAD drawings, posters and other materials, you get optimum results. Plus, there is no wasted ink from changing tanks.



Optimal image processing by object for clearer, more precise business documents and posters.

For business documents and posters, which typically contain a combination of text, lines, graphs/diagrams and photos, you can optimize image processing for each object. The results are sharper text and more natural colors in photos. Graphs and diagrams are reproduced as displayed on the computer monitor. Text on color backgrounds appears more vivid.



Simple setup for long banner/borderless printing*. Printing from Microsoft Office applications is easy, too.

High-impact banners are as easy to produce as 1-2-3: Just click two boxes—Borderless Printing and Scale to fit Roll Paper Width—then print. You can also easily print from popular software such as Microsoft Office. No special software is necessary even for long banner printing and borderless printing.

*Note: With the iPF5000/500, the optional Auto Roll Feed Unit is required

Page Size: Long banner

Borderless Printing Method: Borderless Printing

Fit Media Size: Scale to fit Roll Paper Width: Print Image with Actual Size:

Media Size: Auto

■ Normal printing

■ Borderless printing of a long banner

NEW

iPF700

SIZE IMAGE QUALITY

36 inch 2400 x 1200dpi (max) 4 pl 5 COLORS

SPEED PRINTING

15,360 nozzles L-COA image processor Long banner Borderless

HIGH PRODUCTIVITY

130ml ink tank Roll remaining detection Ink level detection Non-firing detection and compensation High-performance cutter

INTERFACE

Network USB 2.0 Hi-Speed IEEE 1394 (option)

STANDARD SOFTWARE

Printer Driver 2006 Poster Artist 2006 HDI Driver Media Configuration Tool

FINE Full-photolithography Inkjet Inkjet Engineering L-COA

Size	Media	Mode	Print speed
A0	Plain paper/roll	Draft	Apx. 1.2 min.
A0 CAD		Draft	Apx. 1.2 min.

*For the printing conditions, refer to the end of this catalog.



4 exclusive CAD printing modes ensure optimal lines.

Select from 4 CAD printing modes—Fast, Line Drawing, High Accuracy and Monochrome Line Drawing—to achieve the optimal results. Ultra-thin lines are reproduced accurately even in Fast mode.

Poster (Graphic Image)
POP Ad
CAD (Line Drawing)
CAD (Fast)
CAD (Monochrome Line Drawing)
CAD (High Accuracy)
Photo (from digital camera)
Poster (Notice Announcement)

CAD (Fast): For printing drafts for proofing
CAD (Line Drawing): Optimal output of color drawings
CAD (Monochrome Line Drawing): Optimal output of monochrome drawings
CAD (High Accuracy): For smoother lines and small text

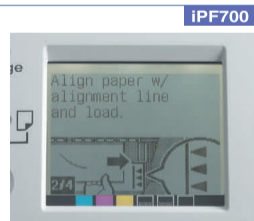
Finer, more realistic output from 3D CAD, GIS and perspective drawings.

3D/GIS Map mode of the imagePROGRAF Printer Driver 2006 helps to achieve optimal color results from 3D CAD and GIS applications, and perspective drawings.

Drawings provided by A&A Inc.

Large graphical LCD panel presents key information simply and logically.

The LCD panel constantly displays the selected media type, ink level and other key operational information. For primary procedures such as media changing, ink changing and error recovery, easy step-by-step instructions are displayed on the panel in an animated graphical format, which enables easy intuitive operation without the need to refer to the manual.



Monitors amount of remaining roll paper.

For roll paper, an internal counter calculates the amount used and the amount remaining. If not enough paper remains in a roll to complete a job, a warning is issued before printing starts. If you change paper mid-roll, a barcode, the media type and the amount remaining are printed on the edge of the paper. When you reinsert the roll, the printer reads the barcode and resumes monitoring the roll.

Note: To use roll paper with the IPF5000/500, an optional Auto Roll Feed Unit is required.

Accurately indicates the remaining amount of ink

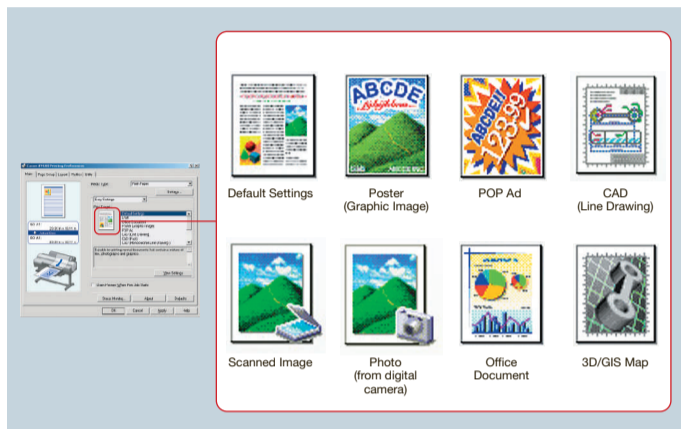
Indication of remaining roll paper

Wide range of print driver functions allows you to precisely control the look of the finished product.

imagePROGRAF Print Driver 2006

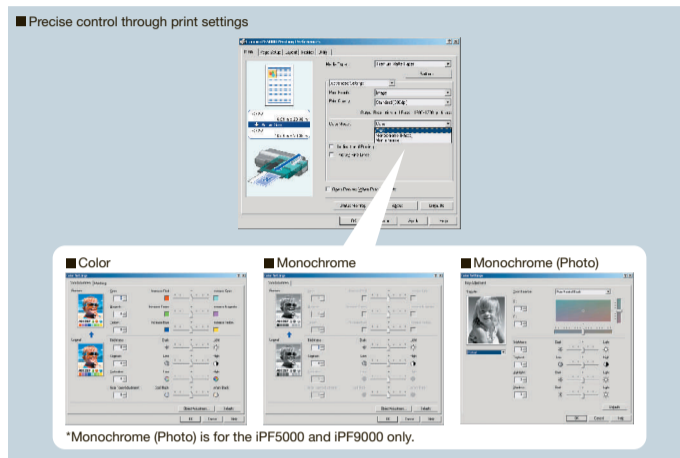
Easy Settings: Just select the setting for your purpose.

15 printer settings—for digital camera photographs, posters, CAD (line drawings), etc.—can be called up at a single click. It's easy to add settings and edit existing settings. The graphical preview screen allows you to easily confirm the print size, position and orientation of the design before actual printing.



Advanced Settings: Make a print reflect your vision.

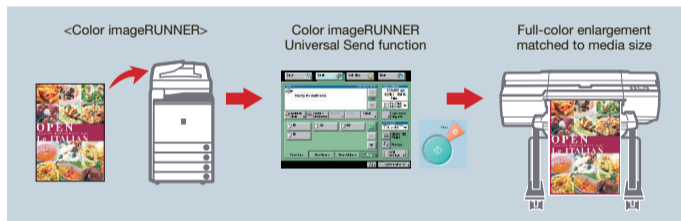
Professionals will appreciate the versatility of Advanced Settings. The detailed preferences allow your vision to be reflected directly in your prints.



Color imageRUNNER Enlargement Copy. As easy to produce as copies.

NEW

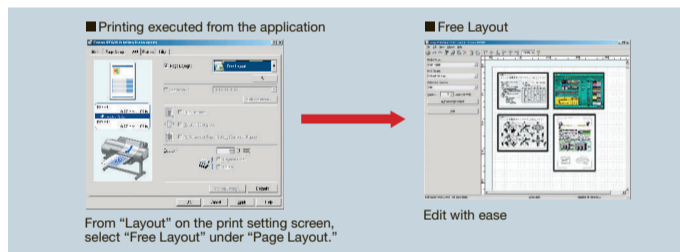
Place any document up to A3 size on your Color imageRUNNER, press the start button and the imagePROGRAF will make beautiful enlargements. No special software required. The imagePROGRAF Printer Driver 2006 handles the work.



Free Layout. For layout of data from a wide range of software.

NEW

From Microsoft Word, PowerPoint and Excel, Adobe Acrobat and other popular applications, you can import selected pages, edit and make a layout in a single large sheet using print images (metafiles). Just use the usual operations of your software to move, align, enlarge/reduce and rotate objects. Creating posters could hardly be easier.



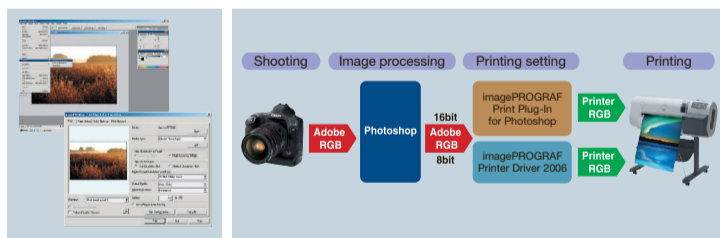
Directly export Adobe Photoshop image data to the imagePROGRAF.

imagePROGRAF Print Plug-In for Photoshop

NEW

Windows | Macintosh

16-bit RGB images processed in Adobe Photoshop can be directly exported to the imagePROGRAF. The broad color gamut and smooth gradation is retained, and printing is easy. In addition to offering color adjustments, the preview function helps to guarantee optimal printing results. For Adobe Photoshop users, this large-format printing environment is a true breakthrough.



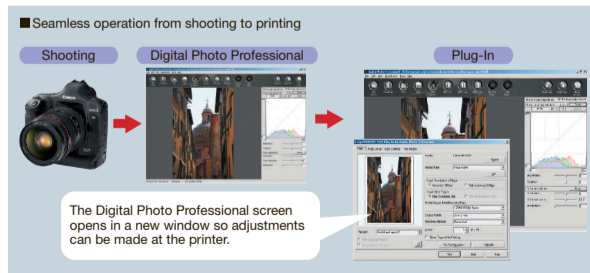
Print RAW image data with the imagePROGRAF.

imagePROGRAF Print Plug-In for Digital Photo Professional

NEW

Windows | Macintosh

For EOS DIGITAL camera users, a new plug-in allows images to be exported directly from the camera's Digital Photo Professional (version 2.1) software to the imagePROGRAF. This enables professional-quality prints that take advantage of the EOS camera's large color gamut. Brightness, white balance, picture style, and other adjustments made by the photographer in the Digital Photo Professional software are retained, ensuring that prints reflect the photographer's vision.

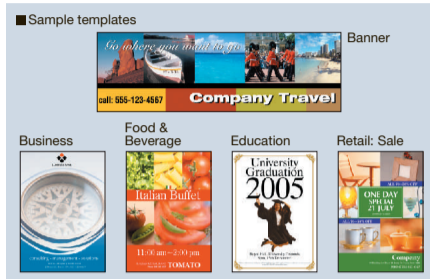


**No need for special skills.
Anybody can easily create professional-quality posters.**

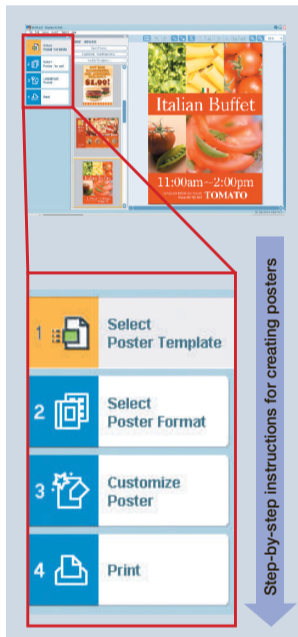
PosterArtist 2006

Wide selection of smartly designed templates.

Around 200 templates covering many fields including distribution, retail, restaurant, education and offices are available. For easy selection, the templates are sorted by index.



Four simple steps for creating a professional-quality poster.



- 1 Select a template**
Around 200 templates designed for various fields and areas of business are available.
- 2 Select poster format**
Select the media type, size and orientation.
- 3 Customize poster**
Select from our large collection of photos, clip art, or import your own digital camera photo data, for your design. Perform editing right on the screen.
- 4 Print**
Print your poster. Since the image-PROGRAF is interlinked with Printer Driver 2006, the previously bothersome setup required for oversize banner printing and borderless printing is now handled through simple setup in PosterArtist 2006.

QuickCopy. Easily edit and make enlargements from CanoScan data.

NEW

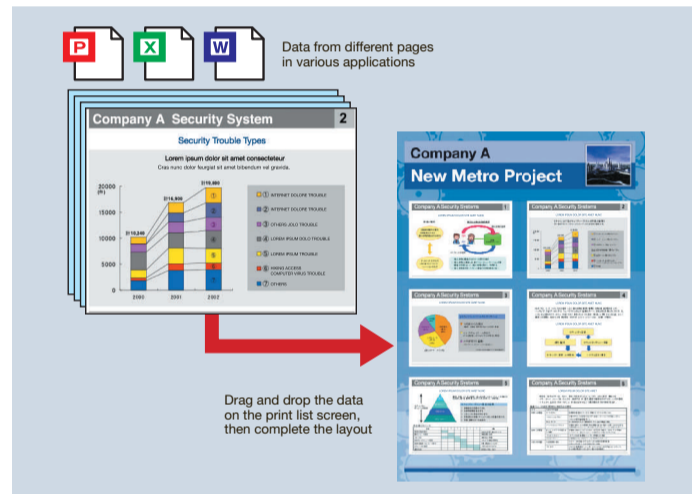
Large-format prints from data scanned with CanoScan are as easy to make as regular copies. You can also easily load the data into PosterArtist 2006 and create posters.



Page Capture. Import data from frequently used applications into a poster that you design.

NEW

Any desired Microsoft Word, Excel or PowerPoint page can be imported as a printable image in PosterArtist 2006 and included in your layout. Easily create perfect posters for company bulletin boards and poster sessions.



Special image editing software for digital photo data.

imagePROGRAF Digital Photo Print Pro

iPF5000 / iPF9000

Windows 2000/XP

This software allows digital photo data to be edited more easily. One-touch adjustments include moiré removal, skin tone enhancement, backlight correction and more. The soft proof function helps you to ensure that your color prints match what you see on the display. With Digital Photo Professional, you can easily work with RAW data. Multiple screen layouts and a calendar feature further expand the world of large-format photo printing.



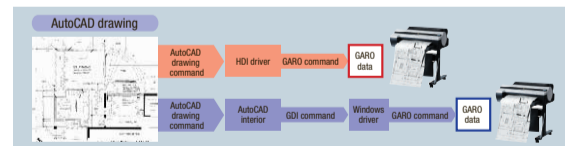
Special support for CAD applications.

imagePROGRAF HDI Driver

iPF500 / iPF600 / iPF700

Windows

An exclusive driver is provided for AutoCAD/AutoCAD LT. The imagePROGRAF HDI driver offers the same printing environment as regular HDI/ADI drivers, allowing you to work in the printing environment to which you are accustomed.



Ideal for various design and printing businesses: from plate making to Print-for-Pay

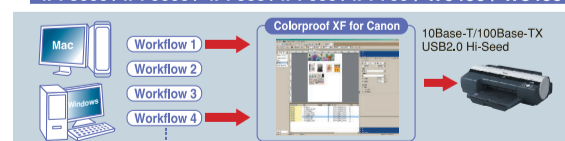
EFI Colorproof XF for Canon

NEW

iPF5000 / iPF9000 / iPF500 / iPF600 / iPF700 / W6400 / W8400

Option

Managing operations with pre-settings eliminates the need for time-consuming setup for high-quality printing. We support a wide range of file formats commonly used in the graphic design and printing industries.



Specifications

■ IPF5000/IPF9000/IPF500/IPF600/IPF700

Model name			imagePROGRAF IPF5000	imagePROGRAF IPF9000	imagePROGRAF IPF500	imagePROGRAF IPF600	imagePROGRAF IPF700
Print head (Nozzles)			MBK, BK, C, M, Y, PC, PM, R, G, B, GY, PGY; 2,560 nozzles per color Total: 30,720 nozzles	MBK, BK, C, M, Y, PC, PM, R, G, B, GY, PGY; 2,560 nozzles per color Total: 30,720 nozzles	MBK, BK, C, M, Y, PC, PM, R, G, B, GY, PGY; 2,560 nozzles per color Total: 30,720 nozzles	MBK, BK, C, M, Y, PC, PM, R, G, B, GY, PGY; 2,560 nozzles per color Total: 30,720 nozzles	MBK, BK, C, M, Y, PC, PM, R, G, B, GY, PGY; 2,560 nozzles per color Total: 30,720 nozzles
Maximum print resolution (dpi)			2400 x 1200 dpi		2400 x 1200 dpi		2400 x 1200 dpi
Ink tanks			130 ml each (bundled starter ink: 90 ml) Tubing system (independent ink tanks)		700 ml / 330 ml each (bundled starter ink: 330 ml) Tubing system (independent ink tanks)		130 ml each (bundled starter ink: 90 ml) Tubing system (independent ink tanks)
Media feed			Cassette, Manual feed (top-loading), Manual feed (front-loading), Roll paper*1		Manual feed (front-loading), Roll paper		Cassette, Manual feed (top-loading), Manual feed (front-loading), Roll paper*1
Maximum printable length*2			18 m		18 m		18 m
Maximum media width			431.8 mm (17")		1,524 mm (60")		431.8 mm (17")
Media size			ISO A4, A3, A3+, A2, ARCH B, JIS B3, B4, ANSI Letter, Legal, B, B super, C (17 x 22"), 8 x 10", 10 x 12", 10 x 15", 12 x 16", 14 x 17", 16 x 20" (US Photo), 13 x 22"		—		ISO A4, A3, A3+, A2, ARCH B, JIS B3, B4, ANSI Letter, Legal, B, B super, C (17 x 22"), 8 x 10", 10 x 12", 10 x 15", 12 x 16", 14 x 17", 16 x 20" (US Photo), 13 x 22"
Media size			Cut sheet		Cassette		Manual feed from the top
Media size			Manual feed from the top		203.2 mm (8") x 279.0 mm - 431.8 mm (17") x 609.6 mm (24")		203.2 mm (8") x 279.0 mm - 431.8 mm (17") x 609.6 mm (24")
Media size			Manual feed from the front		203.2 mm (8") x 520.0 mm - 431.8 mm (17") x 609.6 mm (24")		203.2 mm (8") x 520.0 mm - 431.8 mm (17") x 609.6 mm (24")
Media size			Roll paper*1		Media width: 203.2 mm (8") - 431.8 mm (17")		Media width: 203.2 mm (8") - 431.8 mm (17")
Margins			Printable area		Cassette		Manual feed
Margins			Manual feed		Top: 3 mm, bottom: 3 mm, left: 3 mm, right: 3 mm		Top: 3 mm, bottom: 3 mm, left: 3 mm, right: 3 mm
Margins			Roll paper*1		Top: 3 mm, bottom: 23 mm, left: 3 mm, right: 3 mm		Top: 3 mm, bottom: 23 mm, left: 3 mm, right: 3 mm
Margins			Recommended print area		Cassette		Manual feed
Margins			Manual feed		Top: 20 mm, bottom: 27 mm, left: 7 mm, right: 7 mm		Top: 20 mm, bottom: 27 mm, left: 7 mm, right: 7 mm
Margins			Roll paper*1		Top: 20 mm, bottom: 23 mm, left: 7 mm, right: 7 mm		Top: 20 mm, bottom: 23 mm, left: 7 mm, right: 7 mm
Media Type*3			Plain paper, High resolution paper, Coated paper, Heavyweight coated paper, Premium matte paper, Matte photo paper, Glossy photo paper, Semi-glossy photo paper, Heavyweight glossy photo paper, Heavyweight semi-glossy photo paper, Photo paper plus, Photo paper plus semi-glossy, Synthetic paper, Backlit film, Backprint film, Thin fabric banner, Proofing paper, Fine art photo, Fine art heavyweight photo, Fine art textured, Fine art watercolor, Fine art block print, Canvas matte, Japanese paper wash, CAD tracing paper, CAD translucent matte film, POP board and others		Plain paper, Recycled coated paper, Coated paper, Heavyweight coated paper, Extra heavyweight coated paper, Premium matte paper, Glossy photo paper, Semi-glossy photo paper, Heavyweight glossy photo paper, Heavyweight semi-glossy photo paper, Synthetic paper, Backlit film, Backprint film, Flame-resistant cloth, Fabric banner, Thin fabric banner, Proofing paper, Fine art photo, Fine art heavyweight photo, Fine art textured, Fine art watercolor, Fine art block print, Canvas matte, Canvas semi-glossy, Japanese paper wash, CAD tracing paper, CAD translucent matte film, CAD clear film and other		Plain paper, High resolution paper, Coated paper, Heavyweight coated paper, Premium matte paper, Matte photo paper, Glossy photo paper, Semi-glossy photo paper, Heavyweight glossy photo paper, Heavyweight semi-glossy photo paper, Photo paper plus, Photo paper plus semi-glossy, Synthetic paper, Backlit film, Backprint film, Thin fabric banner, Proofing paper, Fine art photo, Fine art heavyweight photo, Fine art textured, Fine art watercolor, Fine art block print, Canvas matte, Canvas semi-glossy, Japanese paper wash, CAD tracing paper, CAD translucent matte film, POP board and others
Borderless printing media width (roll media only)			254 mm (10"), 257 mm (B4), 329 mm (A3+), 355.6 mm (14"), 406.4 mm (16"), 420 mm (A2)*4, 431.8 mm (17")		254 mm (10"), 355.6 mm (14"), 406.4 mm (16"), 515 mm (B2), 594 mm (A1), 609.6 mm (24"), 841 mm (A0), 914.4 mm (36"), 1,030 mm (B0), 1,066.8 mm		254 mm (10"), 257 mm (B4), 329 mm (A3+), 355.6 mm (14"), 406.4 mm (16"), 420 mm (A2)*4, 431.8 mm (17")
Maximum Outside Diameter of Roll Paper			150.0 mm		150.0 mm		150.0 mm
Media Thickness			Cut sheet		Cassette		Manual feed from the top
Media Thickness			Manual feed from the top		0.08 - 0.3 mm		0.08 - 0.3 mm
Media Thickness			Manual feed from the front		0.08 - 0.5 mm		0.08 - 0.5 mm
Media Thickness			Roll paper*1		0.5 - 1.5 mm		0.5 - 1.5 mm
Media Thickness			Roll paper*1		0.07 - 0.8 mm		0.07 - 0.8 mm
Interface			Standard		10base-T/100base-TX, USB2.0 Hi-Speed		10base-T/100base-TX, USB2.0 Hi-Speed
Interface			Option		IEEE 1394*6		IEEE 1394
Printer language			GARO (Graphic Arts language with Raster Operations)		GARO (Graphic Arts language with Raster Operations)		GARO (Graphic Arts language with Raster Operations)
Printer driver OS support			Windows*8 Macintosh*5		Windows 98 SE / Me / 2000 / XP*7 / Server2003*7 Mac OS 9.1/10.2 or later		Windows 98 SE / Me / 2000 / XP*7 / Server2003*7 Mac OS 9.1/10.2 or later
Printer driver languages			US-English, French, German, Italian, Spanish, Chinese (Mac OS 9 excluded), Korean (Mac OS 9 excluded), Japanese		US-English, French, German, Italian, Spanish, Chinese (Mac OS 9 excluded), Korean (Mac OS 9 excluded), Japanese		US-English, French, German, Italian, Spanish, Chinese (Mac OS 9 excluded), Korean (Mac OS 9 excluded), Japanese
Memory			192 MB		640 MB		192 MB
Hard disk			—		40 GB		—
Power supply			AC 100 - 120 V(50/60Hz), AC 220 - 240 V(50/60Hz)		AC 100 - 240 V (50/60Hz)		AC 100 - 120 V (50/60Hz)
Power consumption			Operation		100 W or less		TBD
Power consumption			Standby (At the low power mode)		100 V - 120 V: 6 W or less, 220 V - 240 V: 7 W or less		100 V - 120 V: 5 W or less, 220 V - 240 V: 6 W or less
Power consumption			Power off (standby)		1 W or less (in compliance with Executive Order of the President of the United States of America)		1 W or less (in compliance with Executive Order of the President of the United States of America)
Acoustic noise level			Operation: approx. 53 dB (A) or less, Standby: approx. 35 dB (A) or less		TBD		Operation: approx. 53 dB (A) or less, Standby: approx. 35 dB (A) or less
Operational environment			Temperature: 15 - 30°C, Humidity: 10 - 80% (condensation free)		Temperature: 15 - 30°C, Humidity: 10 - 80% (condensation free)		Temperature: 15 - 30°C, Humidity: 10 - 80% (condensation free)
Dimensions (W x D x H)			Main unit		999 x 733 x 317 mm		2,299 x 766 x 1,144 mm (Stand included)
Dimensions (W x D x H)			Main unit with option/Stand		999 x 733 x 317 mm		2,299 x 766 x 1,144 mm (Stand included)
Weight			Approx. 45 kg (with Auto Roll Feed Unit: approx. 49 kg)		TBD		Approx. 39 kg (with Auto Roll Feed Unit: approx. 43 kg)
Environment certifications			ENERGY STAR, RoHS directive, IT ECO Declaration, WEEE, Executive Order of the President of the United States of America, Law on Promoting Green Purchasing, GPN, J-MOSS (Green mark)		ENERGY STAR, RoHS directive, IT ECO Declaration, WEEE, Executive Order of the President of the United States of America, Law on Promoting Green Purchasing, GPN, J-MOSS (Green mark)		ENERGY STAR, RoHS directive, IT ECO Declaration, WEEE, Executive Order of the President of the United States of America, Law on Promoting Green Purchasing, GPN, J-MOSS (Green mark)

*1 For the use of IPF5000/IPF500, the optional Auto Roll Feed Unit is required. *2 Maximum printable length varies according to the OS and application. *3 For the information on purchasable media, contact your sales representative. *4 The borderless print spacer included with roll holder is required. *5 Not compatible with Mac OS X classic mode. For an Intel-based Macintosh, use Mac OS X 10.4.11 or later. *6 Not compatible with Mac OS X classic mode. For an Intel-based Macintosh, use Mac OS X 10.4.11 or later. *7 Not compatible with Windows XP Professional x64 Edition / Windows Server 2003 x64 Editions.

■ Options

Model name	Note	IPF5000	IPF9000	IPF500	IPF600	IPF700
Auto Roll Feed Unit RU-01	For the use of roll paper for IPF5000 and IPF500	●	—	●	—	—
Printer Stand ST-24	Optional stand for IPF600	—	—	—	●	—
Printer Stand ST-32	Optional stand for IPF700	—	—	—	—	●
Roll Holder Set RH2-11	Spindle for both 2-inch core and 3-inch core; for IPF5000 and IPF500	●	—	●	—	—
Roll Holder Set RH2-24	Spindle for both 2-inch core and 3-inch core; for IPF600	—	—	—	●	—
Roll Holder Set RH2-32	2-inch core spindle for IPF700	—	—	—	—	●
Roll Holder Set RH3-32	3-inch spindle for IPF700	—	—	—	—	●
Roll Holder Set RH2-63	2-inch core spindle for IPF9000	—	●	—	—	—
Roll Holder Set RH3-63	3-inch core spindle for IPF9000	—	●	—	—	—
Basket BU-01	Basket to catch printouts	—	●	—	—	—
IEEE 1394 Expansion Board EB-05	IEEE 1394 board with 6 pins	●	●	●	●	●

■ Ink Tanks

Model name	Note	IPF5000	IPF9000	IPF500	IPF600	IPF700
PFI-101	MBK, BK, C, M, Y, PC, PM, R, G, B, GY, PGY	●	—	—	—	—
PFI-301	MBK, BK, C, M, Y, PC, PM, R, G, B, GY, PGY	—	●	—	—	—
PFI-701	MBK, BK, C, M, Y, PC, PM, R, G, B, GY, PGY	—	●	—	—	—
PFI-102	MBK, BK, C, M, Y	—	—	●	●	●

■ Print Head

Model name	Note	IPF5000	IPF9000	IPF500	IPF600	IPF700
Print Head PF-01	6 colors integrated type	●	—	●	●	●
Print Head PF-02	—	—	●	—	—	—

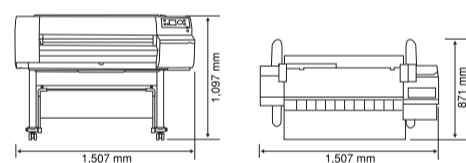
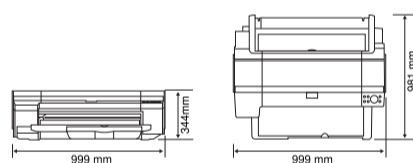
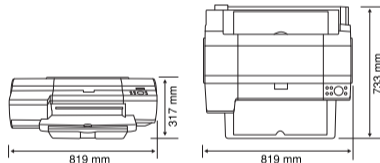
■ Maintenance Cartridge

Model name	Note	IPF5000	IPF9000	IPF500	IPF600	IPF700
Maintenance Cartridge MC-05	Cartridge to absorb waste ink for IPF5000 and IPF500	●	—	●	—	—
Maintenance Cartridge MC-06	Cartridge to absorb waste ink for IPF600	—	—	—	●	—
Maintenance Cartridge MC-07	Cartridge to absorb waste ink for IPF700	—	—	—	—	●
Maintenance Cartridge MC-08	Cartridge to absorb waste ink for IPF9000	—	●	—	—	—

■ Cutter Blade

Model name	Note	IPF5000	IPF9000	IPF500	IPF600	IPF700
Cutter Blade CT-05	Cutter blade for IPF700	—	—	—	—	●
Cutter Blade CT-06	Cutter blade for IPF9000	—	●	—	—	—

	imagePROGRAF IPF500	imagePROGRAF IPF600	imagePROGRAF IPF700
	MBK, BK, C, M, Y; 5,120 nozzles for MBK, 2,560 nozzles for each other color Total: 15,360 nozzles	MBK, BK, C, M, Y; 5,120 nozzles for MBK, 2,560 nozzles for each other color Total: 15,360 nozzles	MBK, BK, C, M, Y; 5,120 nozzles for MBK, 2,560 nozzles for each other color Total: 15,360 nozzles
	2400 x 1200 dpi	2400 x 1200 dpi	2400 x 1200 dpi
	130ml each (bundled starter ink: 90 ml)	130ml each (bundled starter ink: 90 ml)	130ml each (bundled starter ink: 90 ml)
	Tubing system (independent ink tanks)	Tubing system (independent ink tanks)	Tubing system (independent ink tanks)
	Cassette, Manual feed (top-loading), Manual feed (front-loading), Roll paper*1	Cassette, Manual feed (top-loading), Manual feed (front-loading), Roll paper	Manual feed (front-loading), Roll paper
	18 m	18 m	18 m
	431.8 mm (17")	609.6 mm (24")	917 mm (36")
	ISO A4, A3, A3+, A2, ARCH B, JIS B3, B4, ANSI Letter, Legal, B, B super, C (17 x 22"), 8 x 10", 10 x 12", 10 x 15", 12 x 16", 14 x 17", 16 x 20" (US Photo), 13 x 22"	ISO A4, A3, A3+, A2, ARCH B, JIS B3, B4, ANSI Letter, Legal, B, B super, C (17 x 22"), 8 x 10", 10 x 12", 10 x 15", 12 x 16", 14 x 17", 16 x 20" (US Photo), 13 x 22"	---
	203.2 mm (8") x 279.0 mm - 431.8 mm (17") x 609.6 mm (24")	203.2 mm (8") x 279.0 mm - 609.6 mm (24") x 1,600 mm	---
	203.2 mm (8") x 520.0 mm - 431.8 mm (17") x 609.6 mm (24")	203.2 mm (8") x 520.0 mm - 609.6 mm (24") x 1,600 mm	203.2 mm (8") x 203.2 mm - 917 mm (36") x 1,600 mm
	Media width: 203.2mm (8") - 431.8mm (17")	Media width: 203.2mm (8") - 609.6mm (24")	Media width: 254mm (10") - 914.4mm (36")
	Top: 3 mm, bottom: 3 mm, left: 3 mm, right: 3 mm	Top: 3 mm, bottom: 3 mm, left: 3 mm, right: 3 mm	---
	Top: 3 mm, bottom: 23 mm, left: 3 mm, right: 3 mm	Top: 3 mm, bottom: 23 mm, left: 3 mm, right: 3 mm	Top: 3 mm, bottom: 23 mm, left: 3 mm, right: 3 mm
	Top: 3 mm, bottom: 3 mm, left: 3 mm, right: 3 mm	Top: 3 mm, bottom: 3 mm, left: 3 mm, right: 3 mm	Top: 3 mm, bottom: 3 mm, left: 3 mm, right: 3 mm
	Top: 20 mm, bottom: 27 mm, left: 7 mm, right: 7 mm	Top: 20 mm, bottom: 27 mm, left: 7 mm, right: 7 mm	---
	Top: 20 mm, bottom: 23 mm, left: 7 mm, right: 7 mm	Top: 20 mm, bottom: 23 mm, left: 7 mm, right: 7 mm	Top: 20 mm, bottom: 23 mm, left: 7 mm, right: 7 mm
	Top: 20 mm, bottom: 5 mm, left: 7 mm, right: 7 mm	Top: 20 mm, bottom: 5 mm, left: 7 mm, right: 7 mm	Top: 20 mm, bottom: 5 mm, left: 7 mm, right: 7 mm
	Plain paper, High resolution paper, Coated paper, Heavyweight coated paper, Premium matte paper, Matte photo paper, Glossy photo paper, Semi-glossy photo paper, Heavyweight glossy photo paper, Heavyweight semi-glossy photo paper, Glossy paper, Photo paper pro, Photo paper plus, Photo paper plus semi-glossy, Synthetic paper, Proofing paper, CAD tracing paper, CAD translucent matte film, POP board and others	Plain paper, Recycled coated paper, High resolution paper, Coated paper, Heavyweight coated paper, Extra heavyweight coated paper, Premium matte paper, Matte photo paper, Glossy photo paper, Semi-glossy photo paper, Heavyweight glossy photo paper, Heavyweight semi-glossy photo paper, Glossy paper, Photo paper pro, Photo paper plus, Photo paper plus semi-glossy, Synthetic paper, Proofing paper, CAD tracing paper, CAD translucent matte film, POP board and others	Plain paper, Recycled coated paper, Coated paper, Heavyweight coated paper, Extra heavyweight coated paper, Premium matte paper, Glossy photo paper, Semi-glossy photo paper, Heavyweight glossy photo paper, Heavyweight semi-glossy photo paper, Synthetic paper, Proofing paper, CAD tracing paper, CAD translucent matte film, CAD clear film and others
	254 mm (10"), 257 mm (B4), 329 mm (A3+), 355.6 mm (14"), 406.4 mm (16"), 420 mm (A2)*4, 431.8 mm (17")	254 mm (10"), 257 mm (B4), 329 mm (A3+), 355.6 mm (14"), 406.4 mm (16"), 420 mm (A2)*4, 431.8 mm (17"), 515 mm (B2), 594 mm (A1)*4, 609.6 mm (24")	254 mm (10"), 355.6 mm (14"), 406.4 mm (16"), 515 mm (B2), 594 mm (A1), 609.6 mm (24"), 728 mm (B1), 841 mm (A0), 914.4 mm (36")
	150.0 mm	150.0 mm	150.0 mm
	0.08 - 0.3 mm	0.08 - 0.3 mm	---
	0.08 - 0.5 mm	0.08 - 0.5 mm	---
	0.5 - 1.5 mm	0.5 - 1.5 mm	0.07 - 0.8 mm
	0.07 - 0.8 mm	0.07 - 0.8 mm	0.07 - 0.8 mm
	10base-T/100base-TX, USB2.0 Hi-Speed	10base-T/100base-TX, USB2.0 Hi-Speed	10base-T/100base-TX, USB2.0 Hi-Speed
	IEEE 1394*6	IEEE 1394*6	IEEE 1394*6
	GARO (Graphic Arts language with Raster Operations)	GARO (Graphic Arts language with Raster Operations)	GARO (Graphic Arts language with Raster Operations)
	Windows 98 SE / Me / 2000 / XP*7 / Server2003*7	Windows 98 SE / Me / 2000 / XP*7 / Server2003*7	Windows 98 SE / Me / 2000 / XP*7 / Server2003*7
	Mac OS 9.1/10.2 or later	Mac OS 9.1/10.2 or later	Mac OS 9.1/10.2 or later
	US-English, French, German, Italian, Spanish, Chinese (Mac OS 9 excluded), Korean (Mac OS 9 excluded), Japanese	US-English, French, German, Italian, Spanish, Chinese (Mac OS 9 excluded), Korean (Mac OS 9 excluded), Japanese	US-English, French, German, Italian, Spanish, Chinese (Mac OS 9 excluded), Korean (Mac OS 9 excluded), Japanese
	128 MB	192 MB	256 MB
	---	---	---
	AC 100 - 120 V(50/60Hz) , AC 220 - 240 V(50/60Hz)	AC 100 - 120 V(50/60Hz) , AC 220 - 240 V(50/60Hz)	AC 100 - 240 V(50/60Hz)
	100 W or less	100 W or less	140 W or less
	100 V - 120 V: 6 W or less, 220 V - 240 V: 7 W or less	100 V - 120 V: 6 W or less, 220 V - 240 V: 7 W or less	100 V - 120 V: 5 W or less, 220 V - 240 V: 6 W or less
	1 W or less (in compliance with Executive Order of the President of the United States of America)	1 W or less (in compliance with Executive Order of the President of the United States of America)	1 W or less (in compliance with Executive Order of the President of the United States of America)
	Operation: approx. 53 dB (A) or less, Standby: approx. 35 dB (A) or less	Operation: approx. 53 dB (A) or less, Standby: approx. 35 dB (A) or less	TBD
	Temperature: 15 - 30°C, Humidity: 10 - 80% (condensation free)	Temperature: 15 - 30°C, Humidity: 10 - 80% (condensation free)	Temperature: 15 - 30°C, Humidity: 10 - 80% (condensation free)
	819 x 733 x 317 mm	997 x 810 x 344 mm	1,507 x 871 x 1,097 mm (Stand included)
	819 x 810 x 344 mm (with Auto Roll Feed Unit)	999 x 981 x 990 mm (with Auto Roll Feed Unit)	---
	Approx. 39 kg (with Auto Roll Feed Unit: approx. 43 kg)	Approx. 55 kg (with Stand: approx. 72 kg)	TBD
	ENERGY STAR, RoHS directive, IT ECO Declaration, WEEE, Executive Order of the President of the United States of America, Law on Promoting Green Purchasing, GPN, J-MOSS (Green mark)	ENERGY STAR, RoHS directive, IT ECO Declaration, WEEE, Executive Order of the President of the United States of America, Law on Promoting Green Purchasing, GPN, J-MOSS (Green mark)	ENERGY STAR, RoHS directive, IT ECO Declaration, WEEE, Executive Order of the President of the United States of America, Law on Promoting Green Purchasing, GPN, J-MOSS (Green mark)



*with Mac OS X classic mode. For an Intel-based Macintosh computer, the Macintosh printer driver ver.3.10 or later is required. *6 When using on an Intel-based Macintosh computer, the Macintosh printer driver ver.3.20 or later is required.

■ Printing conditions

Print image 1

	IPF5000	IPF9000	IPF500	IPF600	IPF700
Image size	410 mm x 512.5 mm	827 mm x 1,033 mm	410 mm x 512.5 mm	580 mm x 724.9 mm	827 mm x 1,033 mm
PC	Pentium4 3.2 GHz				
OS	Windows XP SP2				
RAM	1 GB				
Application	Adobe Photoshop 7.0				
Interface	USB 2.0 Hi-Speed				

*Excluding data-transfer time. *Printing speed may vary according to the conditions such as print data size, compute, application software, interface. *Measured by Canon Inc.

Print image 1



Print image 2



*cottage plan and elevation.dwg
(This image was produced with AutoCAD 2004LT)

Print image 2

	IPF600	IPF700
Image size	580 mm x 724.9 mm	827 mm x 1,033 mm
PC	Pentium4 3.2 GHz	
OS	Windows XP SP2	
RAM	1 GB	
Application	AutoCAD 2004LT	
Interface	USB 2.0 Hi-Speed	

Microsoft® and Windows® are registered trademarks of Microsoft Corporation and its foreign subsidiaries.

Mac OS is a registered trademark of Apple Computer Inc.

Adobe, Acrobat, and Photoshop are either registered trademarks or trademarks of Adobe Systems Incorporated in the United States and/or other countries.

AutoCAD and AutoCAD LT are either registered trademarks or trademarks of Autodesk, Inc., in the USA and/or other countries.

All other product names and logos are trademarks or registered trademarks of their respective manufacturers.

Canon

Canon Inc. 30-2, Shimomaruko 3-Chome, Ohta-ku, Tokyo 146-8501, Japan

Canon Marketing Japan Inc. 16-6, Kounan 2-Chome, Minato-ku, Tokyo 108-8011, Japan

Canon U.S.A., Inc. One Canon Plaza, Lake Success, NY 11042, U.S.A.

Canon Europa N.V. Bovenkerkerweg 59-61, 1185 XB Amstelveen, The Netherlands

Canon (China) Co., Ltd. 15F Jinbao Building No. 89 Jinbao Street, Dongcheng District, Beijing, 100005, China

Canon Australia Pty. Ltd. 1 Thomas Holt Drive, North Ryde, Sydney N.S.W. 2113, Australia