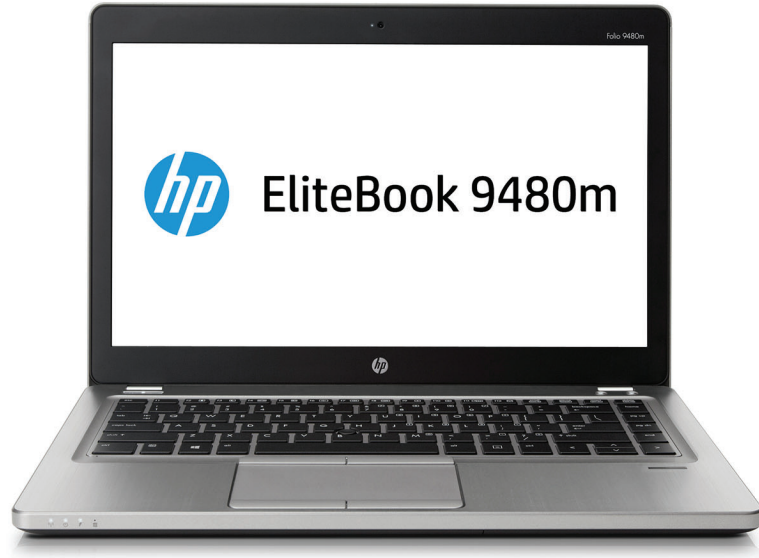




HP EliteBook Folio 9480m Notebook PC

Introducing the next generation HP EliteBook Folio 9480m Ultrabook™₂.

Timeless, ultra slim profile in an all metal design with optional 4G Broadband wWAN, and 4th Generation Intel® Core™ Processing Technology.



HP recommends Windows.

- Windows 10¹
- Screen Size: 14" diagonal
14" diagonal HD or HD+ Display
- HP SureStart Self Healing BIOS
- Global Availability
- Passed multiple Mil-STD Tests¹¹
- Enterprise Docking
- Serviceable¹²
- Removable battery

Thin. Powerful. Serious.

- Enjoy all the mobility of the 3/4-inch (19.05 mm) thin, 3.44 pound (1.56 kg) EliteBook Folio 9480m Ultrabook™₂ with a 14-inch diagonal HD or HD+³ display.

Made for Mobile.

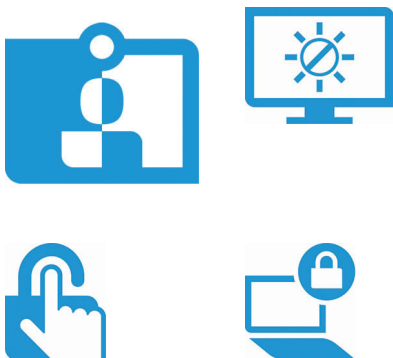
- Stay connected in more places around the world with mobile broadband options featuring 3G⁵ and 4G LTE⁵ capabilities.

Professional to the core.

- Be ready for the challenges of the business day with the strong security features, manageability options, and powerful processors in the HP EliteBook Folio Ultrabook™₂.

Featuring

- Work up to 13 hours and 15 minutes on your HP EliteBook Folio 9480m Ultrabook™₂ or 29 hours¹¹ using the optional long life slice battery³ built with professionals in mind.



HP EliteBook Folio 9480m Notebook PC Specifications Table



Available Operating System	Windows 10 Pro 64 ¹ Windows 10 Home 64 ¹ Windows 8.1 Pro 64 ¹ Windows 7 Professional 64 (available through downgrade rights from Windows 10 Pro) ² Windows 7 Professional 64 (available through downgrade rights from Windows 8.1 Pro) ²³ FreeDOS 2.0 Ubuntu Linux
Processor Family	Intel® Core™ i7 processor; Intel® Core™ i5 processor
Available Processors	Intel® Core™ i7-4650U with Intel HD Graphics 5000 (1.7 GHz, 4 MB cache, 2 cores); Intel® Core™ i7-4600U with Intel HD Graphics 4400 (2.1 GHz, 4 MB cache, 2 cores); Intel® Core™ i5-4310U with Intel HD Graphics 4400 (2 GHz, up to 3 GHz with Intel Turbo Boost Technology, 3 MB cache, 2 cores); Intel® Core™ i5-4210U with Intel HD Graphics 4400 (1.7 GHz, up to 2.7 GHz with Intel Turbo Boost Technology, 3 MB cache, 2 cores)
Chipset	Chipset is integrated with processor
Maximum Memory	16 GB DDR3L-1600 SDRAM ⁴ Transfer rates up to 1600 MT/s
Memory Slots	2 SODIMM
Internal Storage	up to 500 GB SATA (7200 rpm) ⁵ 128 GB up to 240 GB SATA SSD ⁵ up to 256 GB SATA SE SSD ⁵
Flash Cache	32 GB MLC M.2
Display	14" diagonal HD anti-glare LED-backlit (1366 x 768); 14" diagonal HD+ anti-glare LED-backlit (1600 x 900) ⁸
Available Graphics	Integrated: Intel HD Graphics 4400; Intel HD Graphics 5000
Audio	HD audio with DTS Studio Sound; Integrated stereo speakers; Integrated dual-microphone array; Headphone/microphone combo port
Wireless Technologies	Intel Dual Band Wireless-AC 7260 802.11 a/b/g/n/ac (2x2) WiFi and Bluetooth® 4.0 Combo; Intel Dual Band Wireless-N 7260AN 802.11 a/b/g/n (2x2) WiFi and Bluetooth® 4.0 Combo; HP hs3110 HSPA+ Mobile Broadband; HP lt4211 LTE/EV-DO/HSPA+ Qualcomm® Gobi™ 4G Mobile Broadband ^{6,7}
Communications	Intel I218-LM GbE (10/100/1000 NIC)
Expansion Slots	1 multi-format digital media reader (Supports SD, SDHC, SDXC)
Ports and Connectors	2 USB 3.0; 1 USB 3.0 (charging/powering port); 1 headphone/microphone combo; 1 AC power; 1 docking connector; 1 secondary battery connector; 1 RJ-45; 1 DisplayPort 1.2a with Multi-Stream Transport (MST) support; 1 VGA
Input Device	Full-sized, spill resistant backlit keyboard; Glass touchpad (with chemically etched surface) with on/off button, two finger scrolling, pinch zoom, rotating and three-finger flick gestures, two pick buttons. Pointstick with two additional pointstick buttons (for a total of four)
Camera	720p HD webcam (select models) ⁸
Available Software	Foxit PhantomPDF Express; HP Support Assistant; HP Software Setup; HP SoftPaq Download Manager; HP ePrint Driver; HP 3D Driveguard (for hard drive only); Intel WiDi Software; CyberLink Power2Go; CyberLink PowerDVD; Absolute Persistence; HP File Sanitizer; HP Client Security; Microsoft Security Essentials ^{10,11,12,13,14,15,16,17}
Security Management	Absolute Data Protect (models with Windows 8.1 only); Absolute Persistence Module; Device Access Manager with Just in Time Authentication; HP File Sanitizer; HP Client Security; HP Secure Erase; HP SpareKey; Microsoft Security Essentials; Microsoft Defender (models with Windows 8.1 only); Security lock slot; TPM 1.2 Embedded Security Chip; Integrated smart card reader (active); HP Drive Encryption; HP SureStart; HP Fingerprint reader (optional) ^{11,14,16,17,18,19,20}
Power	45 W Smart AC adapter; 45 W Smart AC adapter 2-prong (Japan only); 65 W Smart EM AC adapter (PRC (China), India only) HP Long Life 4-cell, 52 WHr Li-ion; HP Long Life Slice 6-cell, 60 WHr Li-ion (secondary, optional) 4-cell, 52 WHr primary; up 13 hours 15 minutes; 4-cell, 52 WHr primary and optional 6-cell, 60 WHr Slice; up 29 hours ^{21,22}
Dimensions	13.3 x 9.09 x 0.75 in 33.8 x 23.1 x 1.89 cm
Weight	Starting at 3.56 lb Starting at 1.61 kg (Weight will vary by configuration.)
Environmental	Low halogen ⁹
Energy Efficiency Compliance	ENERGY STAR® qualified configurations available
Expansion Solutions	E271i Elite 27" Display S230tm Elite Touch Monitor
Warranty	Limited 3 year, 1 year and 90 day warranty options available, depending on country, 1 year limited warranty on primary battery. Optional HP Care Pack Services are extended service contracts which go beyond your standard warranties.

HP EliteBook Folio 9480m Notebook PC

Accessories and services (not included)

HP 2013 UltraSlim Docking Station



Quickly and easily expand your display, network, and device connectivity to customize an always-ready workspace with the HP 2013 UltraSlim Docking Station, a simple one-click, slide-in side dock for select ultraslim HP EliteBook Notebook PCs.

Product number: D9Y32AA

HP Ultraslim Keyed Cable Lock



Designed to fit industry standard lock slot on most HP notebooks

Product number: H4D73AA

HP External USB DVDRW Drive



Connect the HP External USB DVD/RW to any available USB port on your PC¹ to get immediate read/write access to your optical media.

Product number: F2B56AA

HP BA06 Long Life Battery



The HP BA06 Long Life Battery is a slice battery that slides onto the bottom of the HP EliteBook Folio 9470m Notebook PC to help you be productive longer than using the primary battery alone.

Product number: H4Q48AA

HP DisplayPort to HDMI 1.4 Adapter



Make the most of the available ports on your HP Business Notebook by converting its DisplayPort output to HDMI for quick and easy connection to a range of multimedia devices.

Product number: F3W43AA

HP 65W Slim AC Adapter



Be productive with the HP Slim 65W Combo Adapter, which can power your HP Business Notebook or Ultrabook™.

Product number: H6Y82AA

Messaging Footnotes

- ¹ Not all features are available in all editions or versions of Windows. Systems may require upgraded and/or separately purchased hardware, drivers and/or software to take full advantage of Windows functionality. See <http://www.microsoft.com>.
- ² Not all configurations will qualify as Ultrabooks™.
- ³ Sold separately or as an optional feature.
- ⁵ 3G and 4G LTE WWAN is an optional feature, requires factory configuration and is not available on all products, in all regions and requires separately purchased service contract. Check with service provider for coverage and availability. Connection speeds will vary due to location, environment, network conditions, and other factors.
- ⁶ Requires Windows.
- ⁷ Requires Windows Operating System.
- ⁸ LANDesk software is sold separately. Managed devices must be connected to the management server. Requires active LANdesk maintenance service. Wipe functionality performs a "Windows 8 Reset" and requires Windows 8. Lock performs a Windows "Lock Computer."
- ⁹ Some functionality of this technology, such as Intel® Active management technology and Intel Virtualization technology, requires additional 3rd party software in order to run. Availability of future "virtual appliances" applications for Intel vPro technology is dependent on 3rd party software providers. Windows required.
- ¹⁰ Multi-Core is designed to improve performance of certain software products. Not all customers or software applications will necessarily benefit from use of this technology. 64-bit computing system required. Performance will vary depending on your hardware and software configurations. Intel's numbering is not a measurement of higher performance.
- ¹¹ Requires separately purchased slice battery. Windows 7 battery life will vary depending on various factors including product model, configuration, loaded applications, features, use, wireless functionality, and power management settings. The maximum capacity of the battery will naturally decrease with time and usage. See www.bapco.com for additional details.
- ¹² Memory and storage upgrades after factory configuration are only available through an HP Authorized Service Provider or for participants in HP's Self Maintainer program <http://www.hp.com/partners/Smprogram>

Technical Specifications Footnotes

- ¹ Not all features are available in all editions or versions of Windows. Systems may require upgraded and/or separately purchased hardware, drivers, software or BIOS update to take full advantage of Windows functionality. Windows 10 is automatically updated, which is always enabled. ISP fees may apply and additional requirements may apply over time for updates. See <http://www.microsoft.com>.
- ² This system is preinstalled with Windows 7 Professional software and also comes with a license and media for Windows 10 Pro software. You may only use one version of the Windows software at a time. Switching between versions will require you to uninstall one version and install the other version. You must back up all data (files, photos, etc.) before uninstalling and installing operating systems to avoid loss of your data.
- ³ Multi-Core is designed to improve performance of certain software products. Not all customers or software applications will necessarily benefit from use of this technology. 64-bit computing system required. Performance will vary depending on your hardware and software configurations. Intel's numbering is not a measurement of higher performance.
- ⁴ Maximum memory capacities assume Windows 64-bit operating systems. With Windows 32-bit operating systems, memory above 3 GB may not all be available due to system resource requirements.
- ⁵ For storage drives, GB = 1 billion bytes. Actual formatted capacity is less. Up to 30 GB (for Windows 8.1/10) is reserved for system recovery software.
- ⁶ Wireless is an optional add-on feature and requires wireless access point and Internet service is required and is not included. Availability of public wireless access points limited.
- ⁷ Mobile Broadband is an optional feature and requires factory configuration. Use requires separately purchased service contract. Check with service provider for coverage and availability in your area. Connection speeds will vary due to location, environment, network conditions, and other factors. 4G LTE not available on all products, and in all regions.
- ⁸ HD content required to view HD images.
- ⁹ External power supplies, power cords, cables and peripherals are not Low Halogen. Service parts obtained after purchase may not be Low Halogen. To be low halogen, printed boards and substrate laminates must not contain more than 1500 ppm of total halogens with a maximum chlorine of 900 ppm and maximum bromine of 900 ppm, and plastic within other components must contain less than 1000 ppm of bromine (if the source is from BFRs) and less than 1000 ppm of chlorine (if the chlorine source is from chlorinated flame retardants, PVC, or PVC copolymers).
- ¹⁰ ePrint requires an Internet connection to HP web-enabled printer. HP ePrint account registration required. For a list of eligible printers, supported documents and image types, and for complete details, see www.hp.com/eprint
- ¹¹ File Sanitizer is for the use cases outlined in the DOD 5220.22-M Supplement. Does not support Solid State Drives (SSDs). Initial setup required. Web history deleted only in Internet Explorer and Firefox browsers and must be user enabled.
- ¹² HP 3D Drive Guard requires Windows.
- ¹³ HP Support Assistant: internet access required.
- ¹⁴ Microsoft Security Essentials on Windows 7 only. Internet access required.
- ¹⁵ WiDi: Intel® Wireless Display requires a separate Wireless Display receiver with a USB port and an HDTV or monitor with HDMI input.
- ¹⁶ HP Client Security requires Windows.
- ¹⁷ BIOS Absolute Persistence module is shipped turned off, and will be activated when customers purchase and activate a subscription. Service may be limited. Check with Absolute for availability outside the U.S. The optional subscription service of Absolute Recovery Guarantee is a limited warranty. Certain conditions apply. For full details visit: <http://www.absolute.com/company/legal/agreements/computrace-agreement>. If Data Delete is utilized, the Recovery Guarantee payment is null and void. In order to use the Data Delete service, customers must first sign a Pre-Authorization Agreement and either create a PIN or purchase one or more RSA SecurID tokens from Absolute Software.
- ¹⁸ Microsoft Defender requires internet access.
- ¹⁹ HP Drive Encryption requires Windows. Drive Encryption encodes all the information on a hard disk drive (HDD), helping to keep your business-critical information protected and unreadable to unauthorized users. Turning the PC off or into hibernate requires the user to authenticate in order to get access to the data.
- ²⁰ Secure Erase is for the methods outlined in the National Institute of Standards and Technology Special Publication 800-88.
- ²¹ Windows 7 battery life will vary depending on various factors including product model, configuration, loaded applications, features, use, wireless functionality, and power management settings. The maximum capacity of the battery will naturally decrease with time and usage. See www.bapco.com for additional details.
- ²² Requires separately purchased slice battery. Windows 7 battery life will vary depending on various factors including product model, configuration, loaded applications, features, use, wireless functionality, and power management settings. The maximum capacity of the battery will naturally decrease with time and usage. See www.bapco.com for additional details.
- ²³ This system is preinstalled with Windows 7 Professional software and also comes with a license and media for Windows 8.1 Pro software. You may only use one version of the Windows software at a time. Switching between versions will require you to uninstall one version and install the other version. You must back up all data (files, photos, etc.) before uninstalling and installing operating systems to avoid loss of your data.

Sign up for updates
hp.com/go/getupdated

Learn more at
hp.com

© Copyright 2015. Hewlett-Packard Development Company, L.P. The information contained herein is subject to change without notice. The only warranties for HP products and services are set forth in the express warranty statements accompanying such products and services. Nothing herein should be construed as constituting an additional warranty. HP shall not be liable for technical or editorial errors or omissions contained herein.

Bluetooth is a trademark of its proprietor and used by Hewlett-Packard Company under license. Intel, Core and Celeron are trademarks of Intel Corporation in the U.S. and other countries. ENERGY STAR is a registered mark owned by the U.S. government. Qualcomm and Gobi are trademarks of Qualcomm Incorporated, registered in the United States and other countries. Trademarks of Qualcomm Incorporated are used with permission. All other trademarks are the property of their respective owners.

