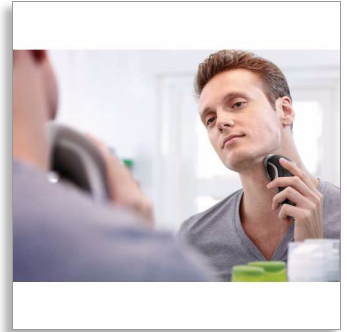




Philips Shaver series 3000  
dry electric shaver

CloseCut heads Flex & Float  
35+ mins' cordless use/8-hr  
charge



HQ6927/16

## Close even on the neck

### CloseCut blades

A close and comfortable shave for an affordable price. The Flex & Float system is combined with CloseCut blades, guaranteeing a close and comfortable shave.

#### Comfortably close

- Replacement heads
- CloseCut blades, durable and self-sharpening for a close shave

#### Adjusts to every curve of your face and neck

- Flex & Float adjusts to face and neck curves

#### Easy to use

- 35+ shaving minutes, 8-hour charge
- 2-year guarantee, worldwide voltage and replaceable blades
- Can be used corded and cordless

#### Easy grip

- Ergonomically designed grip for easy handling



Dry electric shaver  
CloseCut heads Flex & Float 35+ mins' cordless use/8-hr charge

HQ6927/16

## Specifications

### Accessories

- Maintenance: Cleaning brush, Protective cap

### Ease of use

- Charging: 8 hours
- Charging: Corded/cordless, Charging indicator

### Power

- Automatic voltage: 100–240 V
- Run time: 35 min

### Service

- Replacement head: Replace every 2 yrs with HQ56

### Shaving Performance

- Shaving system: CloseCut
- Contour-following: Reflex Action system, Individual floating heads

## Highlights

### Easy grip for optimal handling



This ergonomically designed grip enables easy handling for a comfortable shave.

### Replacement heads

For maximum performance replace your shaving heads every two years with HQ56



Issue date 2016-07-03

Version: 6.0.1

EAN: 08 71010 36157 43

© 2016 Koninklijke Philips N.V.  
All Rights reserved.

Specifications are subject to change without notice.  
Trademarks are the property of Koninklijke Philips N.V.  
or their respective owners.

[www.philips.com](http://www.philips.com)