



The fascination
of flash photography.

2014 / 2015



“Paint” with the flash.



Every subject has its own particular charm. The creative use of flash opens up numerous photographing possibilities, e.g. reducing the subject contrast, highlighting certain picture areas or getting rid of unwanted shadows. The first-class flash units from Metz offer natural colours and harmonious mood lighting – with every subject.





Contents

- 05 Tradition with a focus on the future
- 06 Your subject in the best possible light
- 30 accessories
- 34 Technical glossary
- 36 Technical specifications

10 System flash units



12 mecablitz
64 AF-1 digital



14 mecablitz
52 AF-1 digital



16 mecablitz
44 AF-2 digital



18 mecablitz
26 AF-2 digital



20 mecablitz
36 AF-5 digital



21 mecablitz
24 AF-1 digital

22 Specialist flash units



24 mecablitz
76 MZ-5 digital



26 mecablitz
15 MS-1 digital-Kit



28 mecablitz
36 C-2



29 mecablitz
20 C-2

A focus on quality.

Whether light output, convenience of use or reliability, the first-class quality of Metz flash units is unquestionable – as proven in numerous independent tests. In order to ensure this high standard in the future too, our products are predominantly developed and produced at our site in Germany. The technical perfection of our products is based on highly-qualified employees and systematic quality management.



We have a long-standing tradition of innovation.

The name Metz has been synonymous with professional flash units for decades. Our company's exceptional reputation has been shaped by numerous technical innovations – such as the use of USB connections which allow flash units within the camera system to be updated for the latest camera model even after purchase. Today, we offer a diverse range of products from convenient compact flashes right through to powerful handheld flash guns.

Technical perfection.

Metz flash units are highly regarded around the world – among amateur and professional photographers alike. After all, we develop products which satisfy the standards of tomorrow, today. The use of high-quality components in conjunction with cutting-edge, high-tech manufacturing processes ensures that our products can always be relied upon. Our know-how and experience also guarantee technical perfection for the future.



Brilliant light for the perfect moment.

Your subject in the best possible light.

Using a flash no longer simply means making a dark subject lighter. Anyone using additional light when taking a shot can creatively manipulate the light to suit their requirements – aiming it directly at the subject, indirect flash with a reflector, or even flash “without constraints” with devices that can be used independently of the camera.

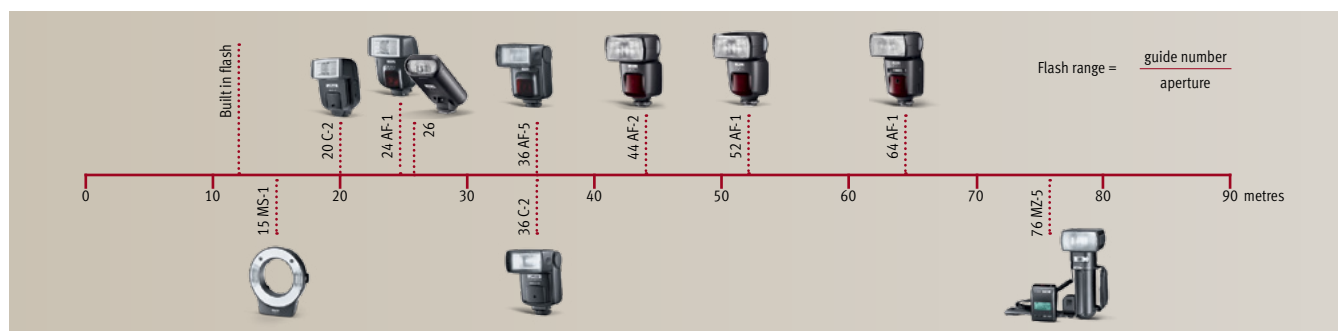
Many Metz flash units make it possible to calibrate light levels, weighting them as desired to deliver just the right mood lighting. Even by day, the right flash can deliver better photos; brightening shadows or contre-jour to give pictures undreamt of sharpness and brilliance.

High guide number, high light output.

An integrated flash normally has a guide number of around 12 (ISO 100/21°). That means that a maximum distance of around 2m can be sufficiently lit with f-stop 5.6. In comparison, an average system flash with a guide number of 50 and the same light sensitivity could provide superb results up to a distance

of 9m. Under the same conditions, a high-performance unit with a guide number of 76 can easily illuminate objects as far as 13m away.

Maximum flash range for ISO100 and f-stop 1 in comparison





Spanning great distances.

Thanks to digital flash control (e.g. E-TTL) the light output of a Metz system flash unit can be controlled via the camera. In order to preserve the ambient mood lighting, the shutter speed should be longer than the flash sync speed – but no longer than 1/60 second for portraits.



Touch display with swivel function.

The mecablitz 64 AF-1 digital's new, colourfully lit touch display presents a real flash unit innovation: when turned from the vertical to horizontal view, the screen also automatically changes the viewing mode. This means that you always have the best access to all functions.

Whether used vertically or horizontally: the back-lit colour touch display is always perfectly aligned.



Contre-jour flash.

Manipulated with skill, contre-jour can deliver interesting lighting effects. Using a flash is a must. Reducing the f-stop by one or two points makes it possible to retain the character of the ambient light. The higher the guide number, the greater the range of the flash unit.



with flash



without flash

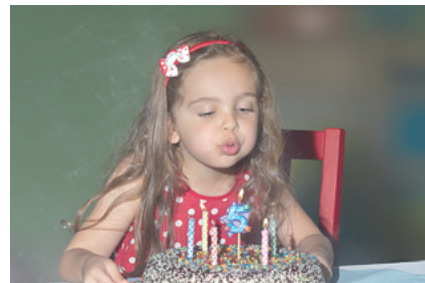


Bouncing flash.

When it comes to portraits, turning or rotating the reflector head for a bouncing flash can be highly effective. Light can be deflected via a special reflector umbrella or a flip-out reflector card integrated into the flash unit itself – to create soft harmonious lighting.



bouncing flash



direct flash

Off-camera flash with master and slave.

Several flash units can be used simultaneously to evenly illuminate shots or achieve effects. The remote systems on modern digital cameras are particularly suited to this. With most systems a Metz flash unit, like the mecablitz 64 AF-1 digital, can be set as the ‘master’. This allows the corresponding slave flash units –

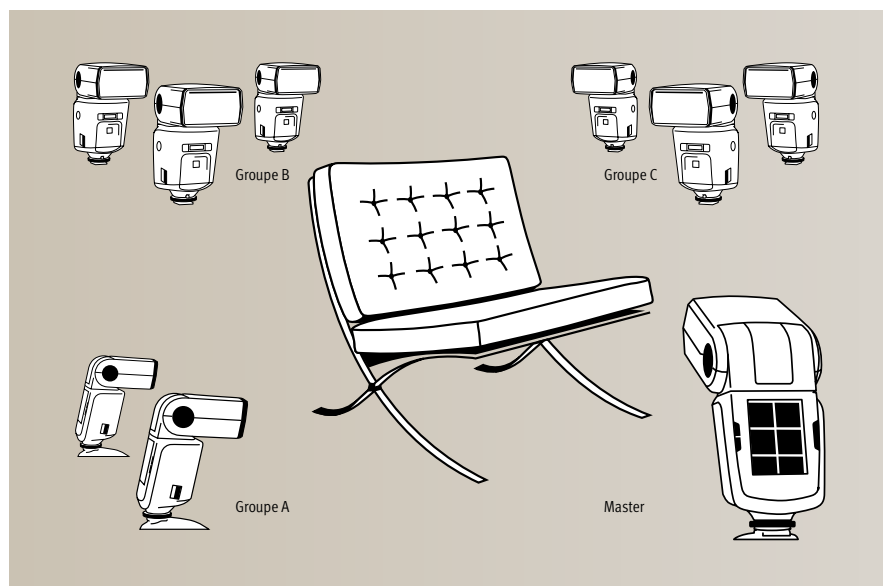
the number of which is unlimited – to be activated wirelessly, as well as controlled using the camera-specific TTL flash mode. All flash units with slave function are suited to slave mode*.



“Off-camera flash”.



with or without slave flash mode



A remote system consists of a master or controller flash unit on the camera and one or more slave flash units. The slave flash unit is wirelessly remotely controlled by the master or controller flash unit. Unlike a controller flash unit, with a master flash unit, the flash contributes to the exposure.

Slave flash mode is perfect for particularly creative lighting design. This involves the positioning and use of an external flash unit wherever required, and entirely without the need for a cable. This can create interesting light accents – or with the use of several slaves the split lighting of subject and background.

* in the respective camera system



Long shutter speeds.



Get creative and try taking shots with longer exposure times than sync times. In this way, moving subjects can, in around one second, create interesting blur effects and a corresponding lightening of the foreground.

USB connection

Metz flash units with USB interfaces are particularly future-proof. Straightforward firmware updates are possible at anytime via the internet.



Intelligent secondary reflector technology.

Portrait shots with direct flash can quite often be identified by their typically harsh and distinct shadow formation. These shadows can be avoided by using a bouncing flash. But even a bouncing flash can produce undesirable effects. These are typically shadows under the model's nose or on their eye sockets.

This can be remedied by a secondary reflector, which in addition to the pivoted main reflector illuminates the subject directly to achieve even illumination.

For example, the new, top-of-the-range mecablitz 64 AF-1 digital is equipped with this intelligent secondary reflector technology, which is fully integrated into the camera's photometer.



The mecablitz 64 AF-1 digital secondary reflector offers evenly distributed light.

A lot of power for the best light.



Optimal light – even at a great distance: Metz's powerful flash units have enough power to perfectly illuminate your photos – e.g. subjects that move. Light levels can be controlled as desired and adjusted according to the situation: in this way, the flash creates sharper and more brilliant photos – even in daylight.







Connection friendly, thanks to an integrated sync cable socket.

mecablitz 64 AF-1 digital

The new star of the flash world.

This top model puts every subject in the perfect light.

The mecablitz 64 AF-1 digital impresses with its high-performance guide number 64 at ISO 100/21° and 200mm focal length. This makes the mecablitz 64 AF-1 digital one of the most powerful compact flash units in the world and what's more it boasts impeccable workmanship and abundant functions. The new rotating touch display with coloured lighting is a particular highlight. Coupled with its intuitive operating system, this allows the photographer to make quick adjustments to the multifarious setting options, no matter what the situation. The newly-developed motorised zoom means the mecablitz 64 AF-1 digital is capable of illuminating focal lengths from 24 to 200mm superbly. Moreover, this flexible high-performance unit boasts a USB interface that enables the specific firmware for each of the models to be conveniently updated via computer and Internet. Its design and pleasant feel also leave nothing to be desired. Not only does the powerful mecablitz 64 AF-1 digital look fantastic, it provides perfect illumination for any flash exposure. The 64 AF-1 is the top of the Metz flash unit range, and features intelligent secondary reflector technology, which allows wonderfully balanced light distribution, especially for portrait shots.



CANON

NIKON

OLYMPUS

PANASONIC

PENTAX

SONY

Overview:



Flip-out
reflector card



Swivel reflector



USB interface

And the new rotating touch display with coloured lighting is a particular highlight.



Flash output *

- High max. guide number 64 for ISO 100 (200 mm)

Basic configuration*

- Secondary reflector with 2 light levels
- Vertical (–9/+90°) and horizontal (300°) swivel reflector
- Large illuminated, graphic touch display in colour, with automatic rotating function (90°)
- Simple operating concept
- Motorised zoom for 24–200 mm illumination
- Spot and extended zoom
- Integrated wide-angle diff user for 12 mm illumination
- Flip-out reflector card
- Modelling light (permanent light for checking shadows)
- Integrated autofocus multi-zone flash metering
- Flash readiness indicator and correct exposure display on unit and on camera **
- Flash range displayed on graphic display
- Acoustic status notifications (beep)
- Automatic unit shut-off and manual key lock
- Wake-up function via the camera
- Integrated sync cable socket
- Power pack connection
- Rapid mode
- Programme memory (4 memory locations)
- Metal base*** with quick lock

Standard flash modes

- TTL flash mode
- Automatic flash mode with 12 f-stops
- Manual flash mode with 25 partial lighting levels
- Strobe flash mode
- Servo flash mode with learning function
- HSS – high speed synchronisation**
- 1st and 2nd shutter curtain synchronisation
- Manual flash exposure correction for TTL or automatic flash mode
- Automatic fill-in flash
- Flash bracketing

Ready for the future

- Firmware update via integrated USB socket

Power supply

- 4 × AA alkaline-magnesium or lithium batteries
- 4 × AA NiMH rechargeable batteries
- High performance Metz NiMH power pack P76 with V58-50 cable

Included as standard

- Belt pouch
- Slave stand

Camera-specific system flash modes(**)

■ Canon version

- E-TTL / E-TTL II flash mode
- E-TTL remote mode

■ Nikon version

- i-TTL / i-TTL BL flash mode
- i-TTL remote mode

■ Olympus/Panasonic/Leica version

- Micro four thirds / four thirds TTL flash mode
- Micro four thirds TTL remote mode

■ Pentax version

- P-TTL flash mode
- P-TTL remote mode

■ Sony Multi Interface version

- ADI flash mode / TTL pre-flash
- ADI remote mode

* Focal length indication in KB format

** Functions depend upon camera being used

*** Excludes Sony Multi Interface version

mecablitz 52 AF-1 digital

Perfect mood lighting.

High-tech innovative operation.

Genuine enlightenment for all modern cameras. Thanks to its maximum guide number 52 for ISO 100, the Metz mecablitz 52 AF-1 has more than enough power to cope with any shot – the horizontally swivelling and vertically tilting reflector ensures optimal lighting control. Any subject can be professionally set off to best advantage with the help of the integrated diffuser for wide angle shots, and the white reflector card. The fully automatic motorised zoom can adjust lighting angles to precisely suit the focal length of the lens. And even wireless flash – whether in TTL or servo mode – is mastered to perfection by the Metz mecablitz 52 AF-1. Even in low light, the powerful autofocus metering flash can achieve razor-sharp images – and the modelling light makes it possible to evaluate light and shade on the subject prior to shooting. What's more, it holds its own in terms of ease of operation too. The Metz mecablitz 52 AF-1 is the first compact flash unit in the world to be equipped with an illuminated touchscreen display which can be swivelled through 90° – particularly practical for portrait shots. A free software update is available via the USB interface at any time.



Illuminated touch-screen display with automatic swivel function (90°).



CANON

NIKON

OLYMPUS

PANASONIC

PENTAX

SONY

Overview:



Detail metal base*



Flip-out reflector card



Swivel reflector

Firmware updates can be easily installed using the USB interface.



Flash output

- High max. guide number 52 for ISO 100/21° and 105 mm

Basic configuration

- Vertical (+90°) and horizontal (300°) swivel reflector
- Illuminated touchscreen display with automatic swivel function (90°)
- Simple operating concept
- Motorised zoom for 24–105 mm illumination
- Spot zoom mode
- Integrated wide-angle diffuser for 12 mm illumination
- Flip-out reflector card
- Modelling light (permanent light to check shadow)
- Integrated autofocus flash metering
- Flash readiness indicator and correct exposure display on unit and on camera**
- LCD flash range display
- Automatic unit shut-off
- Metal base* with quick lock

Standard flash modes

- TTL flash mode (digital only)
- Manual flash mode with 22 partial lighting levels
- Servo flash mode with learning function
- HSS – high speed synchronisation**
- 1st and 2nd shutter curtain synchronisation
- Manual flash exposure correction for TTL flash mode
- Automatic fill-in flash

Ready for the future

- Firmware update via integrated USB socket

Power supply

- 4 × AA alkaline-magnesium or lithium batteries
- 4 × AA NiMH rechargeable batteries

Included as standard

- Belt pouch
- Slave stand

Camera-specific system flash modes**

- **Canon version**
 - E-TTL / E-TTL II flash mode
 - E-TTL remote mode
- **Nikon version**
 - i-TTL / i-TTL BL flash mode
 - i-TTL remote mode
- **Olympus/Panasonic/Leica version**
 - Micro four thirds / four thirds TTL flash mode
 - Micro four thirds TTL remote mode
- **Pentax version**
 - P-TTL flash mode
 - P-TTL remote mode
- **Sony Multi Interface version**
 - ADI flash mode / TTL pre-flash
 - ADI remote mode

* Excludes Sony Multi Interface version

** Functions depend upon camera being used

mecablitz 44 AF-2 digital

Simply better lightning.

Allrounder with even more potential.

The mecablitz 44 AF-2 digital is the ideal solution for price-conscious, dedicated video- and photographers. The clear control panel on the back of the unit impresses with its easy usability and offers a high level of functional reliability. The high performance affords power reserves in any photo situation (max. guide number 44 for ISO 100/21° and 105 mm). Depending on the camera, it has the appropriate application possibilities for any lighting conditions in TTL mode. The photographer can manually set up to 4 light levels, allowing to vary the lighting effects. The integrated high-performance LED creates additional light for video recording.

With the appropriate camera model the mecablitz can also be synchronised to the first or second shutter curtain and supports the High Speed Synchronisation (HSS respectively FP). This enables variable options for creative lighting. Depending on the camera, the Metz 44 AF-2 also offers a slave mode, making wireless TTL flash a child's play – and opens up new dimensions in flash photography. Its motorised zoom function (24-105 mm), the fully swivelling reflector with flip-out reflector card and the integrated wide-angle diffuser (12 mm) affords the photographer additional creative scope.



Clear and easy to operate.



Overview:



USB interface

Flip-out
reflector card

Its fully swivelling reflector with flip-out reflector card and the integrated wide-angle diffuser (12 mm) afford the photographer additional creative scope.



Flash output

- High max. guide number 44 for ISO 100/21° and 105 mm
- High flash numbers (e. g. 270 full flashes with NiMH batteries [2100 mAh])
- Flash delay 0.1–3 sec. (depending on power source and flash output)

Basic configuration

- Simple operating concept
- Vertical (+90°) and horizontal (300°) swivel reflector
- Motorised zoom for 24–105 mm illumination
- Integrated wide-angle diffuser for 12 mm illumination
- Flip-out reflector card
- Modelling light (permanent light to check shadow)**
- Integrated autofocus flash metering
- Flash readiness indicator and correct exposure display on unit and on camera**
- Automatic unit shut-off
- Wake-Up function by camera
- Metal base*** with quick lock
- High performance LED video light, adjustable in 4 levels

Standard flash modes

- TTL flash mode (digital only)
- Manual flash mode with 4 lighting levels
- Automatic fill-in flash
- 1st and 2nd shutter curtain synchronisation**
- Pre-flash for Red-eye reduction**
- High speed synchronisation (HSS/FP)**

Ready for the future

- Firmware update via integrated USB socket

Power supply

- 4 x AA alkaline-magnesium or lithium batteries
- 4 x AA NiMH rechargeable batteries

Included as standard

- Belt pouch
- Slave stand

Camera-specific system flash modes**

■ Canon Version

- E-TTL/E-TTL II flash mode
- E-TTL remote mode*

■ Nikon Version

- i-TTL/i-TTL BL flash mode
- i-TTL remote mode*

■ Olympus/Panasonic/Leica Version

- Micro four thirds/four thirds TTL flash mode
- Micro four thirds/four thirds TTL remote mode*

■ Pentax Version

- P-TTL flash mode
- P-TTL remote mode*

■ Sony Multi Interface Version

- ADI flash mode/pre-flash TTL
- ADI remote mode*

■ Samsung Version

- A-TTL flash mode
- A-TTL remote mode*

■ Fujifilm Version

- TTL Auto flash mode

* Slave mode

** Functions depend upon camera being used

mecablitz 26 AF-2



The smart flash satisfaction.

A compact all-rounder that is setting standards.

Despite its compact size – it even fits in a shirt pocket – the new mecablitz 26 AF-2 boasts of comprehensive features. The device fits perfectly for compact system cameras and compact cameras with hot shoe. The flash output impresses with a guide number of 26 for ISO 100/21° and 85mm, and outperforms camera integrated flashes. Its handy format makes it the ideal trip companion. Adjustments can be set using the function keys – ideal for flash beginners who expect nothing less than a perfect illumination. The ingenious design enables the reflector to be rotated for an indirect

flash. Together with the integrated wide angle diffuser (24 mm), the mecablitz 26 AF-2 allows sufficient creative scope for inventive illumination.

Thanks to the additional two-levels adjustable high-performance LED, the mecablitz 26 AF-2 creates good light also for video recording. Depending on the camera, the flash also offers a slave mode, for making wireless TTL flash. A suitable flash stand for switching the position of the flash aside the camera is now included.



*Simple and intuitive operation
– ideal for flash novices*

CANON

NIKON

OLYMPUS

PANASONIC

PENTAX

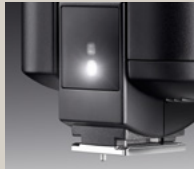
SONY

FUJIFILM

Overview:



Detail metal base**



LED-Video light



Swivel reflector

The diffuser can be easily attached.



Flash output

- High max. guide number 26 for ISO 100/21° and 85 mm

Basic configuration

- 90° vertical bounce facility
- Simple operating concept
- Integrated wide-angle diffuser for 24 mm illumination
- Flash readiness indicator and correct exposure display on unit and on camera ***
- Status LED
- AF-assist light on Video LED
- Automatic unit shut-off (flash mode)
- Metal base* with quick lock

Standard flash modes

- TTL flash mode (digital only)
- 1st and 2nd shutter curtain synchronisation***
- Automatic fill-in flash***

Video-Light

- High performance LED
- 30 Lux / 1 m
- 2 stage adjustable

Ready for the future

- Firmware update via integrated USB socket

Power supply

- 2 × AAA alkaline-magnesium batteries
- 2 × AAA NiMH rechargeable batteries

Included as standard

- Pouch
- Slave stand
- Telephoto diffuser

Camera-specific system flash modes***

■ Canon version

- E-TTL / E-TTL II flash mode
- E-TTL remote mode*

■ Nikon version

- i-TTL / i-TTL BL flash mode
- i-TTL remote mode*

■ Olympus/Panasonic/Leica version

- Micro four thirds / four thirds TTL flash mode
- Micro four thirds TTL remote mode*

■ Pentax version

- P-TTL flash mode
- P-TTL remote mode*

■ Sony Multi Interface version

- ADI flash mode / pre-flash TTL
- ADI remote mode*

■ Fujifilm version

- TTL flash mode

* Slave mode

** Excludes Sony Multi Interface version

*** Functions depend upon camera being used

CANON

NIKON

OLYMPUS

PANASONIC

PENTAX

SONY

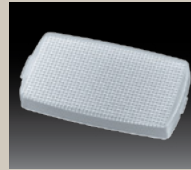
mecablitz 36 AF-5 digital

The compact category.

Presenting the practical cobra design Metz mecablitz 36 AF-5 digital in five versions, compatible with respective system flash operating modes. With a guide number of 36 for ISO 100/21° and 85 mm, the entry-level model delivers superior light output in any shooting scenario. What's more, its accessible ease of operation makes it a real winner. Even bouncing flash is child's play thanks to the vertically tilting reflector. And the manually-configurable zoom reflector yields even more benefits. By adjusting the reflector to different focal lengths, the illumination angle of the 36 AF-5 digital can be optimally exploited for each scenario.



Very practical: the manually-configurable zoom reflector.



Wide-angle adapter



AF beam



Swivel reflector

Flash output

- Max. guide number 36 for ISO 100/21° and 85 mm

Basic configuration

- Vertical swivel reflector +90°
- LED displays
- Manual zoom reflector for 28–85 mm illumination
- Integrated autofocus flash metering
- Flash readiness indicator and correct exposure display on unit and on camera*
- 18 mm diffuser included as standard
- Automatic unit shut-off

Standard flash modes

- TTL flash mode (digital only)
- 1st and 2nd shutter curtain synchronisation*
- Manual flash exposure correction for TTL flash mode*
- Automatic fill-in flash

Ready for the future

- Firmware update via Metz Service

Power supply

- 4 × AA alkaline-magnesium batteries
- 4 × AA NiMH rechargeable batteries

Camera-specific system flash modes

- **Canon version**
 - E-TTL flash mode
- **Nikon version**
 - i-TTL flash mode
- **Olympus/Panasonic/Leica version**
 - Micro four thirds / four thirds TTL flash mode
- **Pentax version**
 - P-TTL flash mode
- **Sony version**
 - TTL pre-flash mode

* Functions depend upon camera being used

CANON

NIKON

OLYMPUS

PANASONIC

PENTAX

SONY

mecablitz 24 AF-1 digital

The travelling companion.

The ideal solution when you're out and about, the mecablitz 24 AF-1 digital – the smallest Metz system flash unit with GN 24 for ISO 100/21° and 35 mm focal length, it is particularly suited to flash novices who are looking for better illumination in their photos. Thanks to intelligent TTL camera control the mecablitz 24 AF-1 digital even makes automatic fill-in flash possible. Additional illumination levels can be achieved thanks to the 90° adjustable swivel reflector. Flash readiness and exposure levels are displayed on the back of the unit via two LED indicators.



AF beam



Swivel reflector

Thanks to its compact, slim-line and lightweight build, the Metz mecablitz 24 AF-1 digital can be stashed easily in any jacket pocket.

Flash output

- Max. guide number 24 for ISO 100/21° and 35 mm

Basic configuration

- Vertical swivel reflector +90°
- LED displays
- Integrated autofocus flash metering
- Flash readiness indicator and correct exposure display on unit and on camera*

Standard flash modes

- TTL flash mode (digital only)
- 1st and 2nd shutter curtain synchronisation*
- Manual flash exposure correction for TTL flash mode*
- Automatic fill-in flash

Ready for the future

- Firmware update via Metz Service

Power supply

- 2 × AA alkaline-magnesium batteries
- 2 × AA NiMH rechargeable batteries

Camera-specific system flash modes

- **Canon version**
 - E-TTL flash mode
- **Nikon version**
 - i-TTL flash mode
- **Olympus/Panasonic/Leica version**
 - Micro four thirds / four thirds TTL flash mode
- **Pentax version**
 - P-TTL flash mode
- **Sony version**
 - TTL pre-flash mode

* Functions depend upon camera being used

Every detail absolutely brilliant.



Discover the great fascination of small worlds: macrophotography shifts tiny details into focus that remain hidden from the naked eye. Flash can do a lot more than illuminate a subject: with targeted use, it can produce unique pictures that impress with their undreamt-of sharpness and brilliance.



mecablitz 76 MZ-5 digital

Because every second counts.



Control unit with LC display and integrated AF flash metering.



Professional technology with secondary reflector.

Professional photographers all over the world trust the powerful 76 MZ-5 digital from Metz. Most notably at weddings and fashion shoots, its expertise in rapid succession shots comes to the fore. Its secondary reflector is worth its weight in gold, creating perfect highlights around the eyes. It goes without saying that the camera-specific system flash modes of other manufacturers can also be used to optimal effect with this professional flash. All settings on the logically structured menu can be accessed directly on the units – and an extended key function for all buttons limits the risk of unintentionally overwriting fixed values. The 76 MZ-5 digital is,

of course, right up to date and affords exceptional flash convenience with vast creative latitude. Included as standard, the NiMH rechargeable battery and Metz charging unit deliver lasting flash power for exacting requirements. The control unit of the 76 MZ-5 digital has been specially equipped with a large illuminated dot matrix display. Over and above this, is the fact that the reflector on the zoom flash automatically adapts the zoom ratio from 24–105 mm depending on camera type. And the wide angle diffuser included as standard makes it possible to extend this by a further 20 mm.

CANON

NIKON

LEICA

OLYMPUS

PANASONIC

PENTAX

Overview:



Illuminated dot matrix display on control unit



Swivel reflector



SCA 3002 adapter (optional)

Secondary reflector with 3 selectable light levels.



Flash output

- High max. guide number 76 for ISO 100/21° and 105 mm

Basic configuration

- SCA adapter system (flash unit universally suitable for use with different cameras)
- Secondary reflector with 3 light levels
- Vertical (+90°) and horizontal (270°) swivel reflector
- Motorised zoom for 24–105 mm illumination
- Control unit with illuminated dot matrix display
- Simple operating concept
- Wide-angle diffuser for 20 mm illumination included
- Modelling light (permanent light to check shadow)
- Integrated autofocus flash metering in control unit
- Flash readiness indicator and correct exposure display on unit and on camera*
- Flash range display in LCD
- Manual key lock

Standard flash modes

- TTL flash mode
- Automatic flash mode with 12 automatic apertures
- Manual flash mode with 25 partial lighting levels
- Strobe flash mode
- 1st and 2nd shutter curtain synchronisation*
- Manual flash exposure correction for TTL or automatic flash mode*
- Automatic fill-in flash
- Flash bracketing

Ready for the future

- Firmware update via Metz Service

Power supply

- Metz NiMH rechargeable battery 76-56 (included as standard)
- High performance Metz NiMH power pack P76 with V 76 cable (Optional accessories)

Included as standard

- Basic stand
- Camera rail
- NiMH rechargeable battery
- Charging unit
- Wide-angle diffuser (20 mm)

Camera-specific system flash modes

- **With adapter SCA 3102 für Canon**
 - E-TTL/E-TTL II flash mode
- **With adapter SCA 3402 for Nikon**
 - i-TTL/i-TTL BL flash mode
- **With adapter SCA 3202 für Olympus/Panasonic/Leica**
 - Micro four thirds / four thirds TTL flash mode
- **With adapter SCA 3702 für Pentax**
 - P-TTL flash mode
- **With adapter SCA 3502 für Leica**
 - TTL flash mode

* Functions depend upon camera being used

mecablitz 15 MS-1 digital-Kit

Big on detail.

Macro flash with individual reflectors.

The Metz mecablitz 15 MS-1 digital provides wireless macro flash via two individually-controlled reflectors. In doing so, the innovative macro flash ring guarantees balanced, precision illumination whilst opening up new creative possibilities for macro shots. With the help of individually variable reflectors (0° – 20°) and their precision light distribution, individual creativity really does have full rein. Creating effective light accents has never been so easy, regardless of the subject. And all this with superior convenience of use – after all, the Metz mecablitz 15 MS-1 digital automatically provides the right level of light both reliably and with precision – all thanks to wireless TTL* operation. Over and above this is a clear dot matrix display which serves to make operation of the mecablitz 15 MS-1 digital even easier. Anyone looking for even more creative latitude can fall back on the manual controls on the new mecablitz 15 MS-1 and vary the prescribed light output via the six partial light output settings. Space-saving internal (rechargeable) batteries provide efficient power supply.



Simple operation with the dot matrix display.



SUITABLE FOR ALL CAMERAS WITH MASTER FLASH OR SYNC SOCKET

Overview:



3-stage swivel reflector



The bounce diffuser, included as standard, softens light.



Wireless TTL flashes
(infrared-translucent clamp
is included as standard)

Flash output

- Max. guide number 15 for ISO 100/21° and 50mm

Basic configuration

- Dual reflector system, can be individually swivelled (0°, 10°, 20°) and controlled separately
- Ratio (light distribution from left to right) 8:1, 4:1, 2:1, 1:1, 1:2, 1:4, 1:8
- Dot matrix display
- 2nd shutter curtain synchronisation (subject to camera)
- Slow synchronisation (Slow)
- Autofocus auxiliary light

Standard flash modes

- Wireless servo flash mode with/without pre-flash suppression
- Servo mode with learning function
- Manual flash mode (operation via sync socket/servo)

Ready for the future

- Firmware update via integrated USB socket

Power supply

- 2 × AAA (Micro)alkaline magnesium batteries (1,5V)
- 2 × AAA (Micro) NiMH/NC rechargeable batteries (1,2V)
- 2 × AAA (Micro) lithium batteries (1,5V)

Included as standard (Kit-Version)

- Bounce diffuser
- Adapter ring 52 mm, 55 mm, 58 mm, 62 mm, 67 mm, 72 mm
- Standard sync cable 15-50
- IR filter bracket
- Belt pouch

* A master flash unit is required to make use of TTL mode in remote mode. Subject to manufacturer and camera model, the integrated flash or an external flash unit is equipped with this TTL-specific master function, for example the Metz 64 AF-1 or the Metz 52 AF-1. Find out more at www.metz-mecatech.de.

Camera-specific system flash modes

- Wireless TTL flash control, remote slave mode selectable for:
 - Canon
 - E-TTL/E-TTL II flash mode
 - Nikon
 - i-TTL flash mode
 - Olympus / Panasonic
 - RC system
 - Pentax
 - P-TTL flash mode
 - Sony
 - TTL pre-flash mode
 - Samsung
 - A-TTL flash mode

mecablitz 36 C-2

Reliable.

Anyone looking for a precise automatic flash unit with swivelling reflector can rely on the mecablitz 36 C-2. It is equipped with three different automatic apertures (8, 4, 2 for ISO 100/21°), as well as a manually adjustable zoom reflector which optimises light output within a focal length range of 28–85 mm. LED displays on the back of the device provide information about flash readiness and correct exposure.



Manually configurable zoom reflector (28–85mm).



Flash output

- Max. guide number 36 for ISO 100/21° and 85 mm

Basic configuration

- Camera connection via central contact (x-synchronisation) or via sync cable (included as standard)
- Vertical swivel reflector +90°
- LED displays
- Manual zoom reflector for 28–85 mm illumination
- Flash readiness indicator and correct exposure display on device

Standard flash modes

- Automatic flash mode with 3 automatic apertures
- Manual flash mode

Power supply

- 4 × AA alkaline-magnesium batteries
- 4 × AA NiMH rechargeable batteries

Included as standard

- Standard sync cable

SUITABLE FOR ALL CAMERAS WITH MASTER FLASH OR SYNC SOCKET

mecablitz 20 C-2

Small – but packs a punch.

An ideal complementary device for anyone with a love of the compact but who doesn't want to risk inferior flash shots. Currently the smallest automatic flash unit from Metz and considerably more effective than a built-in camera flash. The mecablitz 20 C-2 with guide number 20 for ISO 100/21° and 35 mm focal length is perfect for anyone who prefers to have a flash that can even fit into a jacket pocket. The smart little thing has two automatic apertures. And the real highlight – the swivel reflector! LED indicators on the back of the unit not only provide information on flash readiness, but also on correct exposure.



Flash output

- Max. guide number 20 for ISO 100/21° and 35 mm

Basic configuration

- Camera connection via central contact (x-synchronisation) or via sync cable (included as standard)
- Vertical swivel reflector +90°
- LED displays
- Flash readiness indicator and correct exposure display on device

Standard flash modes

- Automatic flash mode with 2 automatic apertures
- Manual flash mode

Power supply

- 2 × AA alkaline-magnesium batteries
- 2 × AA NiMH rechargeable batteries

Included as standard

- Standard sync cable

*Practical
swivel reflector*



Creative lighting.

mecabounce diffuser attachments

Perfect for portrait photography: the white mecabounce diffusers produce a particularly soft and natural light – also with wide-angle illumination. They can be quickly and easily attached to the flash reflector head.

For corresponding compact flash units**

- mecabounce diffusor MBM-01
- mecabounce diffusor MBM-02
- mecabounce diffusor MBM-03
- mecabounce diffusor MBC-10
- mecabounce diffusor MBC-11



mecabounce
Diffuser for compact flash units

Easy soft boxes with accessories

Perfect for smaller product and portrait photography: the 360-degree rotatable Easy soft boxes ensure soft and balanced mood lighting. They can be folded, assembled and disassembled in a flash.

Easy soft box ESB 60-60

Dimensions: 60 × 60 cm

Includes front and rear diffuser and carry bag

Easy soft box ESB 40-40

Dimensions: 40 × 40 cm

Includes front and rear diffuser and carry bag

Adapter between compact flash units and Easy soft boxes

Adjustable flash shoe height

Can be attached to Metz LS-247 and LS-200 lighting tripods

Lighting tripod LS-247

Maximum height 247cm/weight 3.0kg

With air cushioning

Lighting tripod LS-200

Maximum height 200cm/weight 2.5kg

With air cushioning

Flash unit holder FGH 40-60



Easy soft box ESB 60-60



Flash unit holder FGH 40-60

Whether it's product photos or portrait shots: with the folding Mini and Mini Octagon soft boxes you can swathe your subject in soft and harmonious lighting. Thanks to a Velcro strap it can be easily attached to any compact flash unit and transported in its accompanying bag.

Mini soft boxes

Perfect for smaller product shots

Mini soft box SB 30-20

(colour: white, dimensions: 30 × 20 cm)

Mini soft box SB 22-16

(colour: white, dimensions: 22 × 16 cm)

Mini soft box SB 18-15

(colour: white, dimensions: 18 × 15 cm)

Mini Octagon soft boxes

Perfect for passport and portrait photographs

Mini Octagon soft box SB 34-34

(colour: white, dimensions: Ø 34 cm)

Mini Octagon soft box SB 20-20

(colour: white, dimensions: Ø 20 cm)

Mini Octagon soft box SB 15-15

(colour: white, dimensions: Ø 15 cm)



Mini soft box SB 30-30



Mini Octagon soft box SB 34-34

Whether you are looking for a precise spotlight or weak, indirect illumination, we have the perfect reflector umbrella for any compact flash unit – to suit every photographic requirement. What's more, the Velcro strap means it can be quickly and easily attached to the flash unit head.

Spot reflector umbrellas

Spot reflector umbrella SD 30-26 W

Colour: white for neutral light / dimensions: 30 × 26cm

Spot reflector umbrella SD 30-26 S

Colour: silver for cool light / dimensions: 30 × 26cm

Spot reflector umbrella SD 30-26 G

Colour: silver for warm light / dimensions: 30 × 26cm

Reflector umbrellas

Perfect for portrait shots and close-ups. Light loss approx. 3 f-stops..

Reflector umbrella 76-23

(for all Metz handheld flash guns)*

Reflector umbrella 58-23

(for numerous Metz, Canon and Nikon flash units)*



Spot reflector umbrella SD 30-26 G



Reflector umbrella 76-23

*For an overview of compatible units go to page 42.

Adapters and accessories.

SCA adapters and accessories

The unique special feature of Metz SCA flash units is that one and the same flash unit can be used with different cameras. Simply by switching the adapter it is possible to use the system cameras of various manufacturers.*

SCA 3102 for Canon system cameras (Canon E-TTL / E-TTL II)

SCA 3402 for Nikon system cameras (Nikon i-TTL / i-TTL-BL)

SCA 3202 for Olympus/Panasonic system cameras (Olympus/Panasonic TTL)

SCA 3702 for Pentax system cameras (Pentax P-TTL)

SCA 3502 for Leica cameras R8 / R9 / M-series (Leica TTL)

SCA 3045 digital connection cable between SCA 3002 adapter and 45 CL 4 digital

SCA 3000 C connection cable between adapter SCA 3000/3002 with 60 CT-4, 45 CL/T-4, -3 or power bracket G 15

SCA 300 A connection cable between adapter SCA 300, handheld flash guns or power bracket

SCA 301 basic stand, compatible with all SCA flash units; incl. sync cable socket

SCA 307 A connection cable between adapter SCA 300 on the camera's flash shoe and the Metz flash unit on the camera rail



SCA 3102 adapter



SCA 3045 digital

TTL connection cable

The 1.8 metre long TTL connection cable for compact flash units enables complete TTL exposure control. Equipped with tripod socket.

TTL connection cable, available for:

Canon, Nikon and Sony cameras**** and compatible flash units**



TTL connection cable for Canon TCC-10

Flash shoe adapter

Flash shoe adapter with sync cable socket to control compatible external flash units or studio flash units.***

Flash shoe adapter for Canon TSC-11

Flash shoe adapter with sync cable socket

Flash shoe adapter for Nikon TSC-20

Flash shoe adapter with accessory flash shoe and sync cable socket

Flash shoe for Sony TSC-50****

Flash shoe adapter with accessory flash shoe and sync cable socket

Power pack

NiMH power pack P 76 set**

Metz NiMH high-performance power pack P 76 with international charging unit for significantly higher flash numbers and reduced flash delay.

- For Metz flash units with power pack socket
- Charge and discharge function
- Readiness display
- Overheating protection
- Charging status display 20, 40, 60, 80, 100 %



Flash shoe adapter for Canon TSC-11



Flash shoe adapter for Nikon TSC-20



NiMH power pack P 76 set

Synchronisation and attachment.

Sync cable

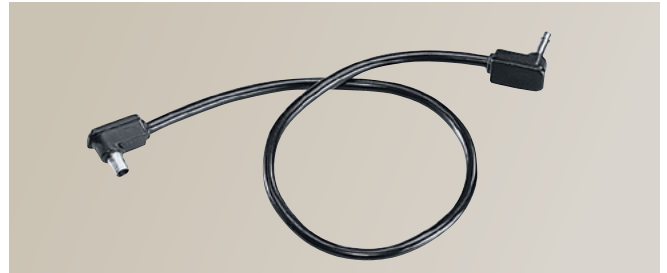
Sync cable for all Metz flash units with sync sockets, basic stand SCA 301 or for flash shoe adapter.

Spiral sync cable

- Length 20 – 60 cm (cable 36 – 52)
- For corresponding compact flash units and Metz handheld flash guns**

Standard sync cable

- Length 25 cm (cable 15-50, 36-50)
- Length 40 cm (cable 45-47)
- For corresponding compact flash units and Metz handheld flash guns**



Standard sync cable 36-50

Camera rails and accessories **

Camera rail 40-36

- For all compact flash units
- For connection to flash units beside the camera
- Perfect for large cameras

Camera rail 32-38

- For all compact flash units and Power brackets
- Replacement for attached camera rails on handheld guns

Rail adapter 60-28

- For 45 CL 4 digital, 45 CL/CT 4, 3, 1, 45 CT 5 and 60 CT 1
- For fixing the height offset between camera subject and the handheld flash gun's reflector, height-adjustable

Rail plates 70-35

- For all handheld guns and Power brackets
- For the attachment of medium and large format cameras on flash rail 32-38; incl. large steel tripod screw



Camera rail 40-36



Rail adapter 60-28

* Adapter SCA 3902 for Hasselblad and SCA 3952 for Mamiya are available from the camera manufacturer

** For an overview of compatible units go to page 36 – 39.

*** Simultaneous use of TTL and sync cable is only possible with Nikon and Sony cameras. For this reason the version for Canon only comes equipped with a sync socket.

**** not for Sony Multi Interface

Innovative technology explained simply.

Acoustic status notification (BEEP)

Additional acoustic status notifications can be activated for flash readiness, flash exposure control and alerts.

AF flash metering

An autofocus auxiliary light (AF measurement flash) integrated in the flash unit automatically supports the central autofocus sensor of the camera in low ambient light conditions. A multizone AF measurement flash, also supports decentralised AF sensors.

Automatic unit shut-off

During extended breaks from photographing, the flash unit switches automatically to an energy saving standby mode to prevent the power source from discharging (Auto-Off). The wake-up function (» Wake-Up function) reactivates the flash unit e.g. by lightly depressing the camera shutter.

Automatic flash mode

A photo sensor integrated in the flash unit measures the flash exposure of the subject during photographing, and automatically terminates the light output as soon as the subject is correctly exposed.

Correct exposure display

The correct exposure display o.k., appears on the flash unit after photographing if the subject in automatic or TTL flash mode is correctly lit.

Dot matrix display with soft keys

Individual adaptation of the display on the camera system and the operating status for optimum and self-explanatory operation of the flash unit via soft keys.

D-TTL

Further development of the TTL flash control with metering pre-flash technology for Nikon cameras.

3D and D-TTL 3D

With the 3D-TTL (Nikon) and D-TTL 3D flash control, additional data such as the distance to the subject is taken into account during flash exposure.

E-TTL

Innovative advancement of TTL flash control with pre-flash metering technology for Canon EOS and PowerShot cameras.

E-TTL II

With the E-TTL II flash control, additional data is taken into account during flash exposure, such as the distance to the subject and the guide number of the flash unit.

Extended zoom

With the motorised zoom mode the main reflector illuminates the subject more than necessary by one reflector position. Thereby providing additional scattered light indoors for a softer illumination of the subject.

Flash bracketing

Flash bracketing series with three shots of different flash exposure: minus correction value, no correction value, and plus correction value.

Flash readiness display

The flash readiness display lights up when the flash unit's flash capacitor possesses sufficient energy for the shot.

Guide number

The guide number is the code number for the light output of a flash unit. It is dependent upon the preset ISO light sensitivity and (with zoom reflectors) on the position of the reflector, as well as on the potential use of reflector attachments (e.g. accessory wide-angle or telephoto lens). With high speed synchronisation (HSS) the guide number also depends on the shutter speed.

HSS – high speed synchronisation

In high speed synchronisation (HSS), you can flash with shutter speeds that are shorter than the flash sync time of the camera. As a result, flash photos with wide focal aperture are possible in high ambient light levels, for example in order to limit the depth of field in portrait shots.

i-TTL

Innovative advancement of the TTL flash control with metering pre-flash technology for Nikon cameras.

i-TTL-BL

With the i-TTL-BL flash control, additional data such as the distance to the subject is taken into account by the flash lighting.

Key function

Locking of operational controls. Protects against unintentional overwriting.

LCD display

Provides information about the operating modes and settings being used. (» Dot matrix display)

Learning mode

The flash unit is capable of recognising the camera's pre-flash technology and in turn of circumventing pre-flash technology. The flash is therefore only activated as the main flash when taking photographs (subject to camera).

Manual flash mode

Flash mode with unregulated light output. The flash unit delivers the full light output, provided no partial light output is set.

Manual zoom

The zoom position of the main reflector and thus the illumination of the flash unit can be adjusted manually to the focal length of the lens.

Metal stand

High-quality metal base for secure attachment on camera shoe.

Modelling light

The modelling light is a stroboscope light with a high flash frequency lasting a few seconds. This “quasi permanent light”, allows you to evaluate the light distribution and shadow formation on the subject before taking the photograph.

Motor zoom

The zoom position of the main reflector and thus the illumination of the flash unit is automatically adjusted to the focal length of the lens.

Partial light mode

Manual flash mode with unregulated light output. By setting partial light mode on the flash unit, the light output or illumination duration of the flash unit can be specifically adapted to the photographic situation.

P-TTL

Innovative advancement of the TTL flash control with metering pre-flash technology for Pentax cameras.

REAR

Synchronisation to the 2nd shutter curtain for more natural blur effects for longer exposure times.

Remote mode

A remote system consists of a master or controller flash unit on the camera and one or more slave flash units. The slave flash unit is wirelessly remotely controlled by the master or controller flash unit. Unlike a controller flash unit, with a master flash unit, the flash contributes to the exposure.

SCA-3002 adapter system

For system cameras with digital or analog data transmission between the camera and flash unit. By using an SCA adapter from the SCA 3002 system, there are numerous additional system flash functions available with flash units from the SCA 3002 system, depending on the type of camera. The firmware of an SCA adapter from the SCA 3002 system can be updated via Metz Service for future cameras.

Secondary reflector

To brighten shadows cast at close range which appear when using an indirect flash.

Servo mode

The servo mode allows you to operate the Metz flash unit of the corresponding camera system wirelessly with the built-in flash unit on the digital camera. It allows light output to be manually calibrated as partial lighting.

Slave mode

An integrated sensor makes this wireless slave flash mode possible in combination with a master or controller flash unit. (>> Remote mode)

Sony / ADI

Innovative further development of the TTL flash control for Sony Alpha cameras in which, for example, information regarding the distance to the subject is included in the flash exposure.

Spot zoom mode

While zooming the reflector increases by one illumination level on the object over the selected position. This centrally highlights the shot. Example: the zoom reflector adjusts to 70mm for a set focal length of 50mm. The information in the display of the flash unit remains however at 50mm, the original focal length of the lens.

Strobe mode

Manual flash mode for flash sequences with a selectable intensity, frequency, and flash number, e.g. for special effect photos and motion studies.

Swivel reflector

Can be tilted horizontally and vertically for bouncing flash. Can be tilted vertically for a bouncing flash.

Touch display

Illuminated graphic display that can be operated by touching the display panel.

TTL fill-in flash control

Reduces too high subject contrast (e.g. to brighten dark shadowy areas in bright sunshine).

TTL mode

While taking the photograph, the flash is measured through the lens (TTL = through the lens) by a sensor in the camera. The light output of the flash unit is terminated as soon as the subject is correctly exposed.

USB

Interface for firmware updates via the Internet.

Wake-up

The flash unit can be reactivated by lightly depressing the shutter if it has been in energysaving standby mode after an extended break from taking photographs. (>> Automatic unit switch-off)

Wide-angle adapter

Increases the light angle of the flash unit. Depending on the type of flash unit, the wide-angle attachment is available either integrated or attachable as an accessory.

Overview of accessories

	Current Metz flash units							Other Metz flash units					FLASH UNITS FROM OTHER MANUFACTURERS *			
	64 AF-1 DIGITAL	52 AF-1 DIGITAL	44 AF-2 DIGITAL	36 AF-5 DIGITAL	26 AF-2 DIGITAL	24 AF-1 DIGITAL	76 MZ-5 DIGITAL	15 MS-1 DIGITAL	36 C-2	20 C-2	60 CT-4	58 AF-1 / 58 AF-2 DIGITAL	54 MZ-4i DIGITAL	50 AF-1 / 48 AF-1 DIGITAL	45 CL-4 DIGITAL	
MECABOUNCE DIFFUSER ATTACHMENTS																
mecabounce diffusor MBM-01 / Metz 58 AF-.. / 50 AF-1												•		•		
mecabounce diffusor MBM-02 / Metz 52 AF-1, 44 AF-1+2		•	•													
mecabounce diffusor MBM-03 / Metz 64 AF-1	•															
mecabounce diffusor MBC-10 / Canon 580 EX II																•
mecabounce diffusor MBC-11 / Canon 430 EX II																•
EASY SOFT BOXES WITH ACCESSORIES																
Easy soft box ESB 60-60	•	•	•	•	•	•				•	•		•	•		•
Easy soft box ESB 40-40	•	•	•	•	•	•				•	•		•	•		•
Flash unit holder FGH 40-60 (for lighting tripods)	•	•	•	•	•	•				•	•		•	•		•
MINI SOFT BOXES																
Mini soft box SB 30-20	•	•	•	•						•	•		•	•		•
Mini soft box SB 22-16	•	•	•	•						•	•		•	•		•
Mini soft box SB 18-15	•	•	•	•						•	•		•	•		•
MINI OCTAGON SOFT BOXES																
Mini Octagon soft box SB 34-34	•	•	•	•						•	•		•	•		•
Mini Octagon soft box SB 20-20	•	•	•	•						•	•		•	•		•
Mini Octagon soft box SB 15-15	•	•	•	•						•	•		•	•		•
SPOT ATTACHMENTS																
Spot reflector umbrella SD 30-26 W (white)	•	•	•	•						•	•		•	•		•
Spot reflector umbrella SD 30-26 S (silver)	•	•	•	•						•	•		•	•		•
Spot reflector umbrella SD 30-26 G (gold)	•	•	•	•						•	•		•	•		•
REFLECTOR UMBRELLAS																
Reflector umbrella 76-23								•			•					•
Reflector umbrella 58-23	•	•	•								•	•	•	•		•
SCA ADAPTERS																
SCA 3102 / Canon								•				•		•		
SCA 3402 / Nikon								•				•		•		
SCA 3202 / Olympus - Panasonic								•				•		•		
SCA 3702 / Pentax								•				•		•		
SCA 3502/ Leica								•				•		•		
SCA 3902/ Hasselblad**								•				•		•		
SCA 3952/ Mamiya**								•				•		•		
SCA ACCESSORIES																
SCA 3045 digital / connection cable															•	
SCA 3000 C / connection cable											•					
SCA 300 A / connection cable											•					
SCA 301 / basic stand								•								
SCA 307 A / connection cable															•	

	Current Metz flash units								Other Metz flash units					FLASH UNITS FROM OTHER MANUFACTURERS*		
	64 AF-1 DIGITAL	52 AF-1 DIGITAL	44 AF-2 DIGITAL	36 AF-5 DIGITAL	26 AF-2 DIGITAL	24 AF-1 DIGITAL	76 MZ-5 DIGITAL	15 MS-1 DIGITAL	36 C-2	20 C-2	60 CT-4	58 AF-1 / 58 AF-2 DIGITAL	54 MZ-4i DIGITAL	50 AF-1 / 48 AF-1 DIGITAL	45 CL-4 DIGITAL	
TTL CONNECTION CABLES																
TTL connection cable for Canon TCC-10	•	•	•	•	•	•						•	•	•		•
TTL connection cable for Nikon TCC-20	•	•	•	•	•	•						•	•	•		•
TTL connection cable for Sony/Minolta TCC-50				•		•						•	•	•		•
FLASH SHOE ADAPTERS																
Flash shoe adapter for Canon TSC-11																
Flash shoe adapter for Nikon TSC-20	•	•	•	•	•	•	•					•	•	•	•	•
Flash shoe adapter for Sony/Minolta TSC-50				•		•	•					•	•	•	•	•
SYNC CABLES																
Spiral sync cable 45-49											•			•		
Standard sync cable 15-50								•								
Standard sync cable 36-50							•			•	•			•		•
Standard sync cable 45-47											•			•		
CAMERA RAILS AND ACCESSORIES																
Camera rail 40-36	•	•	•	•	•	•				•	•					•
Camera rail 32-38							•							•		
Rail adapter 60-28														•		
Rail plate 70-35							•							•		•
POWER PACKS AND ACCESSORIES																
NiMH power pack P 76 set	•						•					•	•	•		
Connection cable V 76							•							•		
Connection cable V 58-50	•											•				
Connection cable V 54-50												•				
RECHARGEABLE BATTERIES AND CHARGER SETS																
NiMH rechargeable battery with charging unit B 47							•							•		
NiMH rechargeable battery with charging unit B 46														•		
NiMH rechargeable battery 76-56							•							•		
NiMH rechargeable battery 45-56														•		
Battery basket 45-39														•		
Dry rechargeable battery 60-38											•					
TBAGS AND CARRYING STRAPS																
Flash unit bag T 58		•	•									•	•	•		•

* For further information visit www.metz-mecatech.de

** Adapter is available from the camera manufacturer.

Technology at a glance

System flash units

Specialist flash units

FLASH OUTPUT (METERS)

Guide number for ISO 100, **35mm** and 50mm

Guide number for ISO 100 and max. zoom

64 AF-1 DIGITAL	52 AF-1 DIGITAL	44 AF-2 DIGITAL	36 AF-5 DIGITAL	26 AF-2 DIGITAL	24 AF-1 DIGITAL
43	38	32	30	20	24
64	52	44	36	26	24

76 MZ-5 DIGITAL	15 MS-1 DIGITAL	36 C-2	20 C-2
54	15	30	20
76	15	36	20

BASIC CONFIGURATION

Adapter system SCA 300

Adapter system SCA 3002

Illumination from ... mm (35 mm format)

Motorised zoom main reflector

Manual zoom main reflector

Extended zoom mode / Spot zoom mode for main reflector

Main reflector swivelling / rotating

Vertical tilt range in °

Horizontal swivel range in °

Integrated wide-angle diffuser for illumination in mm (35 mm format)

Accessory wide-angle, telephoto lens, and bouncer attachments

Integrated reflector card for main reflector

Secondary reflector / partial lighting levels (manually adjustable)

Secondary reflector support for system flash functions

Dot matrix display / illuminated

Illuminated touchscreen display with automatic swivel function (90°) / colour

LED displays

Range display

Flash readiness display / correct exposure display on the flash unit

Acoustic status notifications (beep)

Modelling light function

Manual key lock (KEYLOCK)

Automatic unit shut-off (Auto-Off)

Wake-up function via the camera

Automatic AF flash metering / multiple zone AF flash metering

AF auxiliary light

Integrated LED video lights

Programme memory

Metz remote flash mode (master/slave)

64 AF-1 DIGITAL	52 AF-1 DIGITAL	44 AF-2 DIGITAL	36 AF-5 DIGITAL	26 AF-2 DIGITAL	24 AF-1 DIGITAL
12	12	12	18	24	35
•	•	•			
			•		
•/•	•/•				
•/•	•/•	•/•	•/-	•/-	•/-
-9/+90	90	90	90	90	90
300	300	300			
12	12	12		24	
			•/-/-	-/•/-	
•	•	•			
•/1					
•					
•/•	•/•				
•/•	•/-				
		•	•	•	•
•	•				
•/•	•/•	•/•	•/•	•/•	•/•
•					
•	•	•2)			
•	•				
•	•	•	•	•	•
•	•	•	•	•	•
•/•	•/-	•/-	•/-	•/-	•/-
		•		•	
4					

76 MZ-5 DIGITAL	15 MS-1 DIGITAL	36 C-2	20 C-2
•			
•			
20	50	28	35
•			
		•	
•/-			
•/•	-/•	•/-	•/-
90		90	90
270	20		
•/-/-	•/-/-		
•/2			
•			
•/•	•/-		
		•	•
•			
•/•	•/•	•/•	•/•
•			
•	•		
•			
•/-			
	•		
•/•			

STANDARD FLASH MODES

TTL flash mode (without pre-flash)

Automatic flash mode (f-stops)

Rapid mode

Manual flash mode

light levels

Servo flash mode 2) (without pre-flash suppression/with pre-flash suppression/learning function)

Strobe flash mode

64 AF-1 DIGITAL	52 AF-1 DIGITAL	44 AF-2 DIGITAL	36 AF-5 DIGITAL	26 AF-2 DIGITAL	24 AF-1 DIGITAL
•(12)					
•					
•	•	•			
25	22	4			
•/•/•	•/•/•				
•					

76 MZ-5 DIGITAL	15 MS-1 DIGITAL	36 C-2	20 C-2
•			
•(12)		•(3)	•(2)
•		•	•
•	•	•	•
25	6		
1)/1)/-	•/•/•		
•			

SYSTEM FLASH MODES²⁾

Automatic fill-in flash

Flash readiness display in camera viewfinder

Correct exposure display in viewfinder²⁾

First and second shutter curtain synchronisation

High speed synchronisation (HSS and FP)

Manual flash exposure correction

Manual flash bracketing

Pre-flash function against "red eye"

64 AF-1 DIGITAL	52 AF-1 DIGITAL	44 AF-2 DIGITAL	36 AF-5 DIGITAL	26 AF-2 DIGITAL	24 AF-1 DIGITAL
•	•	•	•	•	•
•	•	•	•	•	•
•	•	•	•	•	•
•	•	•	•	•	•
•	•	•	•	•	•
•	•	•	•	•	•
•	•	•	•	•	•

76 MZ-5 DIGITAL	15 MS-1 DIGITAL	36 C-2	20 C-2
•			
•			
•			
•	•		
•			
•			
•			

1) with slave adapter SCA 3083 digital 2) subject to camera 3) micro-cell (AAA) operated: NiMH (1000 mAh) 4) subject to version

This product has been designed for illuminating photographic motifs. It is not suitable for room lighting purposes in the household.

Metz – always first class.

System flash units

Specialist flash units

SYSTEM FLASH MODES ⁴⁾

	64 AF-1 DIGITAL	52 AF-1 DIGITAL	44 AF-2 DIGITAL	36 AF-5 DIGITAL	26 AF-2 DIGITAL	24 AF-1 DIGITAL	76 MZ-5 DIGITAL	15 MS-1 DIGITAL	36 C-2	20 C-2
Canon E-TTL/E-TTL-II flash mode	•/•	•/•	•/•	•/-	•/•	•/-	•/•			
Canon FE-flash memory for E-TTL and E-TTL-II flash mode	•	•	•	•	•	•	•			
Canon E-TTL remote flash system as master/controller/slave	•/•/•	•/•/•	-/-/•		-/-/•			-/-/•		
Leica guide number control (GNC)							•			
Nikon i-TTL/i-TTL-BL flash mode	•/•	•/•	•/•	•/-	•/•	•/-	•/•			
Nikon 3D multi-sensor fill-in flash mode							•			
Nikon D-TTL/D-TTL-3D flash mode							•/•			
Nikon FV flash output memory for i-TTL and i-TTL-BL flash mode	•	•	•	•	•	•	•			
Nikon matrix controlled fill-in flash mode							•			
Nikon under exposure display in EV (f-stop)	•	•					•			
Nikon i-TTL remote flash system as master/controller/slave	•/•/•	•/•/•	-/-/•		-/-/•			-/-/•		
Olympus/Panasonic/Leica micro-four-thirds/four thirds system (TTL compatible)	•	•	•	•	•	•	•			
Olympus four thirds system as master/controller/slave	•/•/•	•/•/•	-/-/•		-/-/•			-/-/•		
Pentax P-TTL flash mode	•	•	•	•	•	•	•			
Pentax contrast control	•	•					•			
Pentax spot beam mode	•	•					•			
Pentax P-TTL remote flash system as master/controller/slave	•/•/•	•/•/•	-/-/•		-/-/•			-/-/•		
Samsung A-TTL flash mode			•		•					
Samsung A-TTL remote flash system as slave			•		•			•		
Sony ADI flash control	•	•	•		•		•			
Sony TTL pre-flash mode	•	•	•	•	•	•	•			
Sony remote flash system (CTRL / CTRL+ operation) as master/controller/slave	•/•/•	•/•/•	-/-/•		-/-/•			-/-/•		
Fujifilm TTL mode			•		•					

READY FOR THE FUTURE

Firmware update via Metz Service	•	•	•	•	•	•	•	•		
Firmware update via USB socket	•	•	•		•			•		

POWER SUPPLY

Operation with alkaline-magnesium batteries (1,5 V)	•	•	•	•	•	•		•	•	•
Operation with NC or NiMH rechargeable batteries (1,2 V)	•	•	•	•	•	•		•	•	•
Operation with lithium batteries (1,5 V)	•	•	•		•			•		
Operation with Metz NiMH rechargeable battery pack								•		
External energy supply with Metz power pack P 76	•							•		

FLASH NUMBERS (FOR FULL LIGHT OUTPUT)

Operation with alkaline-magnesium batteries (1,5 V)	140	140	220	450	100 ³⁾	200	140 ³⁾	450	150
Operation with NiMH rechargeable batteries (1,2 V/2100 mAh)	190	240	270	460	110 ³⁾	250	200 ³⁾	460	190
Operation with lithium batteries (1,5 V)	290	370	450		160 ³⁾		250 ³⁾		
Operation with Metz NiMH rechargeable battery pack (1650 mAh)							160		
External energy supply with Metz power pack P 76	360						350		

FLASH DELAY IN SECONDS (MIN./MAX.)

Operation with alkaline-magnesium batteries (1,5 V)	0,1/4,4	0,1/4	0,1/3	0,3/3	0,3/8	0,3/5	0,3/4	0,3/5	0,3/10
Operation with NiMH rechargeable batteries (1,2 V)	0,1/1,8	0,1/3,5	0,1/3	0,3/3	0,3/8	0,3/6	0,3/4	0,3/5	0,3/8
Operation with lithium batteries (1,5 V)	0,1/4,2	0,1/4,5	0,1/4		0,3/8		0,3/5		
Operation with Metz NiMH rechargeable battery pack							0,1/4		
External energy supply with Metz power pack P 76	0,1/1,6						0,3/2,5		

DIMENSIONS AND WEIGHT

	Flash gun	Control unit	Flash gun	Control unit	Flash gun	Control unit	Flash gun	Control unit	Flash gun	Control unit	
Weight without power sources in g (approx.)	422	346	306	195	115	126	1126	138	209	196	124
W	Flash gun	78	73	73	73	63	64	103	130	73	65
	Control unit							67			
H	Flash gun	148	134	130	113	85	95	246	144	115	93
	Control unit							35			
D	Flash gun	112	90	106	86	85	68	121	37	92	66
	Control unit							89			

Dimensions in mm approx.(W×H×D)



Metz – the specialist for perfect illumination.

When it comes to illumination, Metz always has the perfect solution – whether it's for amateur photographers or professionals. Our innovative products score points through high-performance technology and reliable quality.

For further information regarding our current range visit www.metz-mecatech.de – or organise your own personal consultation with your Metz specialist dealer. Take a look at our latest catalogues and request them free of charge!

mecastudio



Studio photography in the best light:

The latest mecastudio catalogue provides you with everything you need to know about flash photography, technical accessories and complete studio flash kits for amateur and professional photographers alike.

mecalight



Perfect light for moving images:

Perfect light for moving images: in the new mecalight catalogue we present compact and high-performance LED video lighting along with additional accessories – for camcorder or still camera with video function.

Your authorised Metz dealer

Metz mecatech GmbH

Ohmstraße 55
90506 Zirndorf/Germany
Fon: +49 (0) 911 – 97 06 0
Fax: +49 (0) 911 – 97 06 340

Technische Hotline:

+49 (0) 911 – 97 06 172

www.metz-mecatech.de
info@metz-mecatech.de