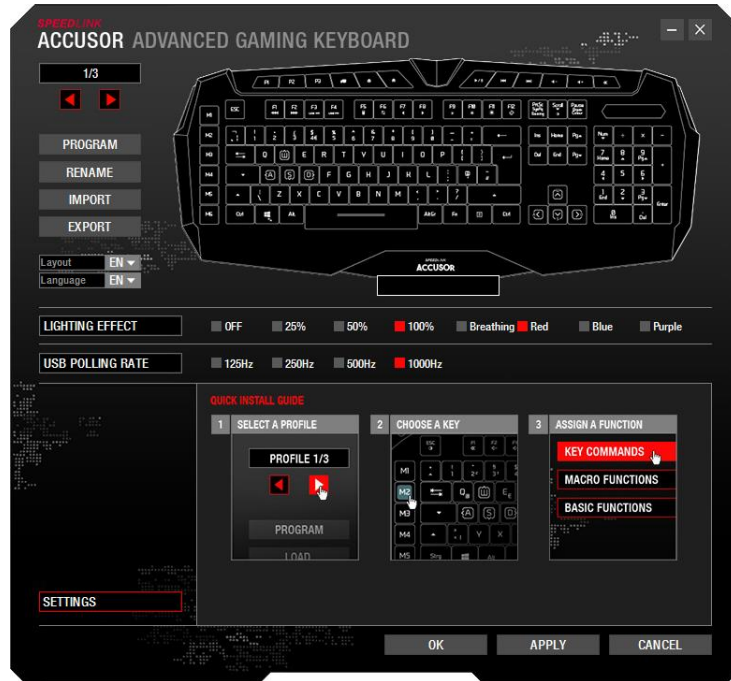


SL-670005-BK

ACCUSOR ADVANCED GAMING KEYBOARD



You can switch between 3 different profiles at the top of the left-hand column. A default profile is configured when the driver is installed for the first time. In the row beneath that, you can:

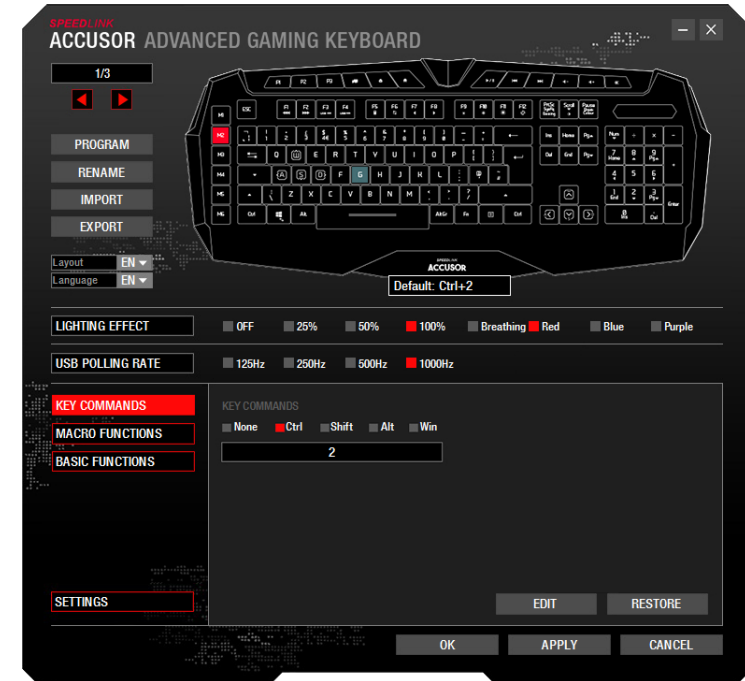
- select a 'PROGRAM' which, when started, launches the profile,
- 'RENAME' the profile,
- 'IMPORT' or 'EXPORT' a profile,
- change the displayed language layout, and
- change the driver menu language.

Below this, you can also configure:

- the lighting effect and lighting intensity for the current profile and
- the USB polling rate.

The displayed keyboard lets you select specific keys to change their functions.

Note: Save your settings after each change by clicking 'OK' or 'APPLY'.



Changing key functions

Click the desired button on the displayed keyboard. In the menu on the bottom left, you can choose between Key Commands, Macro Functions or Basic Functions (macro function only available for macro keys)

Key commands

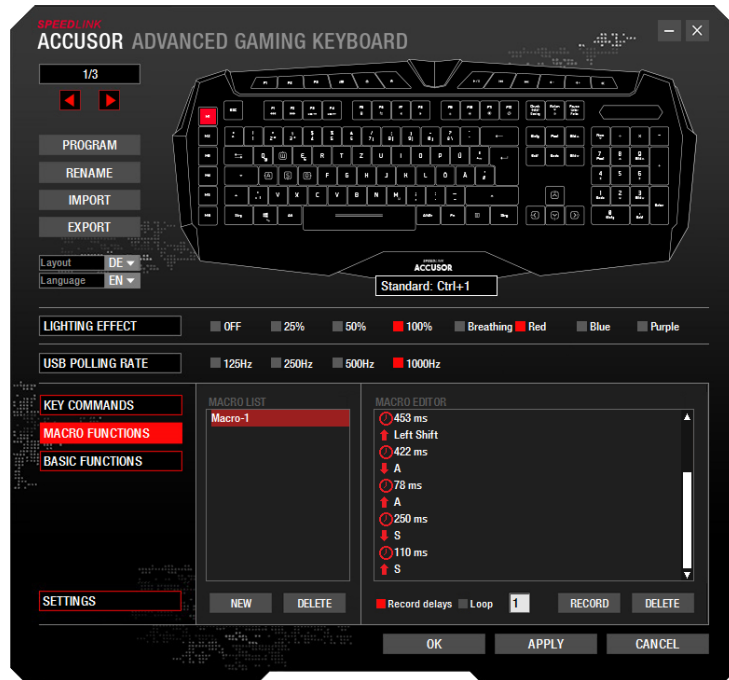
Here you can assign specific shortcuts to a selected key:

1. Click 'EDIT'
2. Press the desired button on the keyboard
3. Click 'EDIT' again

Note: You can also select an additional modifier key (e.g. Ctrl) if required.

SL-670005-BK

ACCUSOR ADVANCED GAMING KEYBOARD



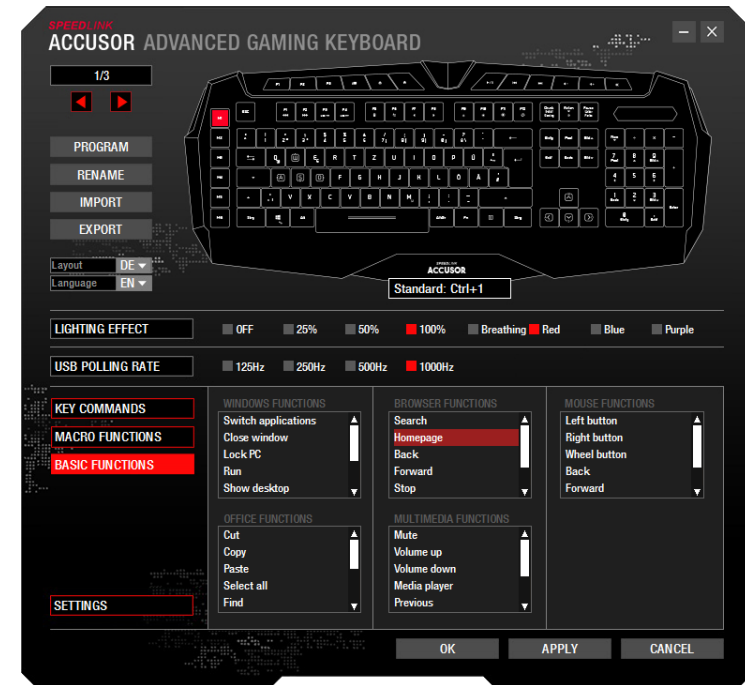
Macro functions (macro keys only)

The left-hand column includes a list of macros created using the driver. On the left, select the macro. On the right, click the Macro Editor pane to record or edit the macro.

Creating a new macro:

1. Click 'NEW' to enter a name and confirm by hitting the 'Enter' key
2. On the right-hand side in the Macro Editor pane, click 'RECORD' and enter your macro
3. Click 'STOP' to stop recording

Note: You can edit the macro or add new commands after recording. To do this, simply right-click the Macro Editor pane.



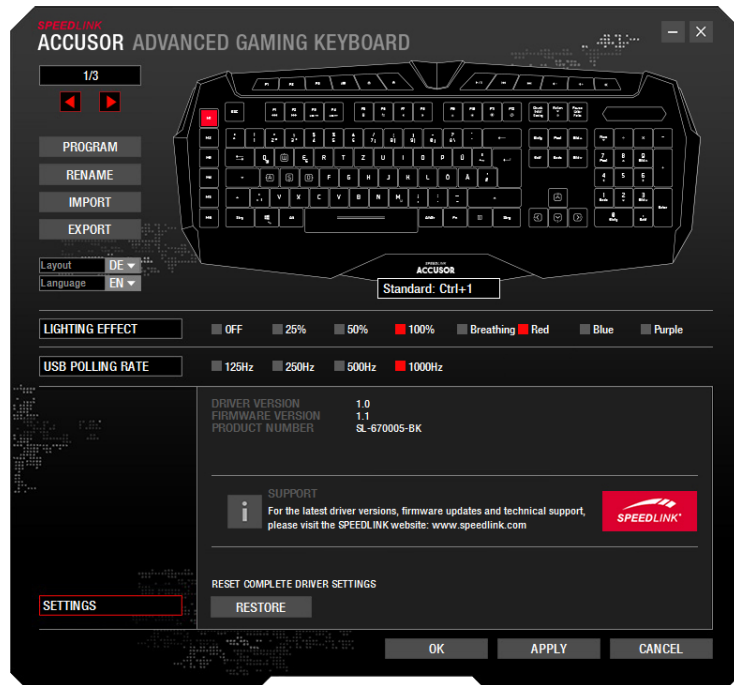
Basic functions

In the 'BASIC FUNCTIONS' menu, an advanced basic function can be mapped to any key on the ACCUSOR (some functions are only available for the macro keys):

- Windows function, e.g. close window, show desktop
- Office function, e.g. cut, copy
- Browser function, e.g. back, forward
- Media player: (default operating system player), e.g. mute, volume up, volume down

SL-670005-BK

ACCUSOR ADVANCED GAMING KEYBOARD



Settings

In the 'SETTINGS' menu you can view the driver version, firmware version and article number of your ACCUSOR.

Click 'RESTORE' to reset all your keyboard settings to their factory settings.