

# CYCLESTORIES

ISSUE 01/2017



2002257937045

PRESENTED BY  
**ROSE**

# 110 YEARS OF ROSE!

**1907** – Who still remembers 1907? It was the time of the German Empire, the year when Astrid Lindgren was born and the Tour de France celebrated its fifth anniversary. But what happened in the tranquil town of Bocholt in Germany back then? Exactly 110 years ago, grandfather Rose opened the smallest bicycle shop in town and thus laid the foundations for what ROSE Bikes is today. Of course, a lot has changed since then. In the past, we used to sell bicycles during summer and sewing machines in winter. Today, more than 350 employees work with commitment and passion to deliver our customers top products and best service.

It is definitely not possible to tell all stories and storyettes of the past 110 years, yet we have collected some of them. In the category "Milestones" on page 15, we want to share the many small and big events that have occurred during this long period of time with you.

In the category "12 Questions" on page 22, too, we will give out some private details. My son-in-law Thorsten and I have revealed some secrets about which issues are discussed during family meetings, which bikes we prefer to ride and much more.


Nothing is as constant as change and this also holds true for ROSE. Ranging from the opening of the smallest bicycle shop of Bocholt via our first catalogue through to the openings of our BIKETOWN stores and the online trade, there are already many milestones in the history of the company. One of the greatest challenges in our work in all these years has always been to adapt to this constant change. Customer requirements, products, distribution channels – the bicycle market is very dynamic and constantly changing. There have been and still are new challenges we have grown with so far and will hopefully also grow with in future. Another milestone is already in the pipeline: In spring, we will offer you a whole new web shop on rosebikes.com that will combine online shop, service and information in a completely new way to offer an even better shopping experience.

In this way, it will be easier and faster for customers to order their new dream bike. Customer satisfaction is our number-one priority. Whether online or in our BIKETOWN stores – we want to offer an excellent range of branded products and outstanding service to make shopping an experience.

By the way: During our anniversary year 2017, we will regularly present promotions and special offers on rosebikes.com. Visit our website, it's worth it!

Enjoy reading and cycling! We are looking forward to serving you for many more years to come.

Yours sincerely, Erwin Rose



Erwin Rose, company founder and managing director

**ROOT MILLER**  
**29" TRAIL MONSTER**  
BOOST YOUR RIDE TO THE NEXT LEVEL

# WHAT'S INSIDE

- 03 EDITORIAL: 110 years of ROSE!
- 06 GALLERY MTB
- 08 GALLERY ROAD
- 10 GALLERY TREKKING/ FITNESS
- 12 INFO POINT: News from the cycling world of ROSE
- 15 MILESTONES! 110 years of ROSE
- 22 12 QUESTIONS FOR: Erwin Rose & Thorsten Heckrath-Rose
- 92 Saving the beautiful for last: smart, practical and fascinating
- 98 ROSE ONLINE: with one click into the world of ROSE!

## MTB

- 24 WHAT'S YOUR BIKE, PRO? MTB fun in Schladming-Dachstein
- 34 SHOPPING MALL! On the mountain biker's shopping list!
- 40 LA PALOMA IN LA POMA! Winter training with Jakub Vencel and Marc Diekmann
- 46 CYCLE FASHION!

## ROAD

- 52 CUSTOM-MADE: the XEON CDX CROSS-4400 Gravel 1x111
- 56 TOP PRODUCT: ROSE TOP CYW jersey and bib shorts
- 58 TORTURE YOURSELF, YOU BASTARD! A tour through the Vosges
- 68 LADIES ONLY! Discover the new ROSE ladies world
- 72 LADIES ONLY! Lovely parts for the new woman
- 74 NEW 2017 BIKES: the PRO SL DISC

## TRIATHLON

- 76 SHOPPING MALL! On the triathlete's shopping list!

## TREKKING

- 80 CYCLING ACROSS AMERICA WITH TAILWIND!  
Bike adventurer Thomas Widerin on the tour of his life
- 88 SHOPPING MALL! On the shopping list!

## BORDO™ BLACK 6510 – THE JUBILEE LOCK

The jubilee lock BORDO™ Black for the 10th birthday of BORDO™. As a Limited Edition in a black style the lock is a combination of the best technology and features from the BORDO™ family. It is presented in a brilliant presentation packaging with a BORDO™ Black scarf as a free gift on top.



2016  
BORDO BLACK 6510  
Ordercode 2251983

2006  
Bordo 6000

2007  
Bordo Combo  
6100

2010  
Bordo Lite  
6050

2010  
Bordo Combo  
Lite 6150

2011  
Bordo Big 6000

2011  
Bordo Granit  
X Plus 6500

2012  
Bordo 6000  
Ecolution

2013  
uGrip Bordo  
5700

2015  
Bordo Centium





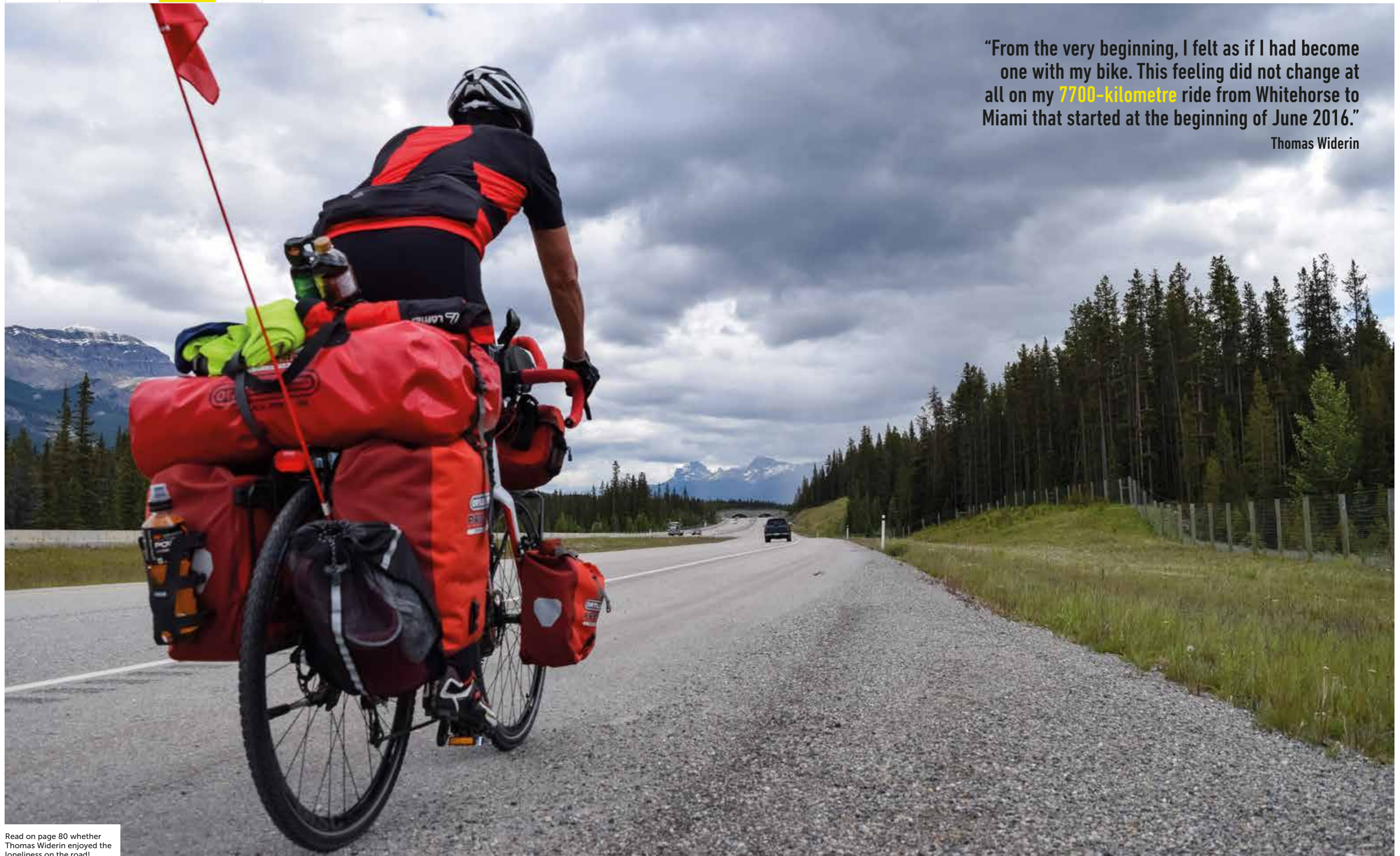
You can even have a lot of fun in the Planai bike park when you are not part of the **world cup circus.**

World cup downhillers Manuel Gruber and David Trummer on the trails in Schladming-Dachstein. Read the story from page 24!

It's not only because of the proximity to Germany and the interesting topography that **the Vosges** are a hotspot for road cyclists.



On the road in the Vosges with brand-new bikes – read the whole story on page 58!



“From the very beginning, I felt as if I had become one with my bike. This feeling did not change at all on my **7700-kilometre** ride from Whitehorse to Miami that started at the beginning of June 2016.”

Thomas Widerin

Read on page 80 whether Thomas Widerin enjoyed the loneliness on the road!

# INFOPOINT

WHAT'S NEW IN THE CYCLING WORLD OF ROSE? THE INFO POINT IS THE SECTION FOR ALL EVENTS, TEAM NEWS, ANNOUNCEMENTS OR ANYTHING ELSE THAT IS CURRENTLY HAPPENING. COME RIGHT IN AND TAKE A LOOK AT THE PRESENT AND THE FUTURE!

## ROSE BIKETOWN BOCHOLT IS STORE OF THE YEAR

In February, the ROSE BIKETOWN store in Bocholt received the 2017 Stores of the Year Award in the "Out of Line" category. For the second time already, the German Retail Association HDE honoured the innovative and creative store concepts of the company ROSE Bikes with this award. The modernization of the flagship store in Bocholt has taken the retail-digitalization strategy of BIKETOWN Munich, that received the award two years ago, to the next level. The expert jury based its decision in favour of ROSE BIKETOWN Bocholt on the fact that the store offers a unique

staging of everything to do with bicycles. In his laudation, Michael Reink of HDE said that the customers can expect a feel-good world on a sales area of around 4000 m<sup>2</sup> that leaves nothing to be desired. The expert bike advice, the possibility to have your body measured in a professional way and the inviting community lounge with delicious snacks and drinks have made a lasting impression. The ROSE BIKETOWN store in Bocholt successfully competed against the Munich store of the brand Decathlon and the store concept of Foto Koch in Düsseldorf.



## 2017 MUKO BIKE TOUR

Cycling, meeting new people – and doing something good! In 2017, too, our MUKO BIKE TOUR will bring together people and their concerns. The bike tour for the benefit of cystic fibrosis research leads 400 cyclists 95 kilometres across the beautiful Münsterland region. Research is important. Thanks to new therapies and earlier diagnoses, the life expectancy of people affected is constantly increasing. Today, a newborn suffering from mucoviscidosis has a realistic chance to reach retirement age. We can all help! Last year, we raised a

record sum of 57 000 euros! So, take a red pen and mark this date in your calendar: The event is going to take place on 8 July 2017 at ROSE BIKETOWN Bocholt. Those who want to get a starting place or one of the limited 2017 MUKO BIKE TOUR jerseys can simply browse on [www.rosebikes.com/mukobiketour](http://www.rosebikes.com/mukobiketour). The net proceeds from the jersey and starting place sales are completely donated to the German Cystic Fibrosis Society (Deutsche Fördergesellschaft für die Mukoviszidoseforschung). See you on the 2017 MUKO BIKE TOUR!



## SHIMANO-M088 – LIMITED EDITION!

Just in time for the new season, we present you the revival of a classic: the M088 by SHIMANO in a limited edition. These mountain bike shoes have been developed in cooperation with SHIMANO and are exclusively available with us in a limited number of only 1500 pieces. It was important for us to develop a shoe that perfectly meets the requirements of riders. That is why we have focussed on high-quality materials, a precise closure mechanism and a slip-resistant rubber tread. The cycling shoes are made from shape-retaining synthetic leather with mesh inserts to offer high comfort. Thanks to a ratchet closure and two asymmetric velcros, the shoes allow for fast and individual adjustment. The sole



consists of a robust rubber tread and a fibreglass reinforced polyamide midsole. Here, the M088 impresses with efficient power transfer and best grip. The weight is approx. 750 grams per pair, the MTB

shoes are compatible with SPD pedal systems. More information? Simply enter the item number into the search field on [rosebikes.com](http://rosebikes.com): 2255561.

## JAN ULLRICH IS BRAND AMBASSADOR FOR ROSE BIKES!

He is considered to be one of the best known and most talented cyclists Germany has ever seen and he still loves cycle racing: Jan Ullrich. From now on, he will be riding on ROSE bikes, just in time for our anniversary year. "We strongly believe that 110 years of ROSE Bikes and 20 years of Jan Ullrich's Tour victory are a good

formula for a successful cooperation," managing director Thorsten Heckrath-Rose explains. "Jan is an unparalleled stylist on the bike and an absolutely likeable person in private life. When meeting Jan, you will meet a family person who has dedicated his life to cycling. He is still ready to give a lot more to his sport."

During a test ride in Majorca, Jan Ullrich could convince himself of the bikes' quality and riding characteristics: "My ROSE X-Lite Team feels like a real competition bike: lightweight, stiff and blessed with impressive acceleration. The first kilometres on the current top model of ROSE's road bike series were a great pleasure", this is the verdict of the Tour de France winner, world champion and Olympic gold medallist.

All this promises a successful cooperation in the future, because for him, cycle racing primarily means one thing: pure passion! And this is exactly what the company ROSE Bikes and Jan Ullrich have in common.





# MILESTONES 110 YEARS OF ROSE

AUTHOR ERWIN ROSE PICTURES ROSE

1907 WAS THE YEAR WHEN A LOT HAPPENED. YOU DON'T BELIEVE IT? THEN CHECK THIS OUT: IN THE UNITED KINGDOM, PEOPLE REJECTED THE PROPOSAL ON THE CONSTRUCTION OF A TUNNEL UNDER THE ENGLISH CHANNEL, AS THEY FEARED A FRENCH INVASION. IN BERLIN, THE DEPARTMENT STORE OF THE WEST AND THE HOTEL ADLON WERE OPENED. AT THE SAME TIME ON THE FAROEER ISLANDS, THE PROHIBITION BEGAN. THE PREMIERE OF BEN-HUR WAS SHOWN IN THE CINEMA, HENKEL LAUNCHED THE LAUNDRY DETERGENT PERSIL, JOHN WAYNE AND ASTRID LINDGREN WERE BORN. AND IN BOCHOLT, A SMALL BICYCLE SHOP OPENED WITH A SIGN WITH THE NAME 'ROSE' ON IT HANGING ABOVE THE FRONT DOOR.

# ALBERTO

BIKE

**ANTI-SLIP BAND**  
in the elastic waistband

**STRETCH PATCH**  
for better comfort of movement

**REFLECTORS**  
on the pants cuffs

ALBERTO



It has been 110 years since my grandfather Heinrich Rose hung up this sign. The sales area of once 30 square metres has turned into 32 000 square metres of company area in total. The small bike shop in the city centre of Bocholt that advertised with the slogan "Im kleinsten Laden kaufen Sie am billigsten" ("The price is cheapest in the smallest shop") has become one of Europe's biggest bike mail order companies with over 140 own bicycle models and more than 350 employees. We have gone a long way. When thinking of this way as a road and looking back, I can see many waymarks lining the street. Some of them are big and well decorated, some of them are small and simple and still others are brightly coloured and round or black and charred. There were signposts and small stumbling blocks, and there were

milestones. All of them were important and have made us what we are today and what ROSE will always be in future: a company that places the customer's satisfaction and the passion for cycling above everything else.

In the first decades, we sold bicycles in summer and sewing machines in winter. Back then, the people rather saw a bike as a means of transportation than as a training tool. I have always been a passionate road cyclist and wanted to bring my passion to bear and so I set up a cycling department in 1970. Thanks to our sewing machine trade, I had good relations to Japan and I was convinced of the product quality. So, I became one of the first Europeans to offer high-quality road bikes from Japan in the late 1970s. With the brand Nishiki, that carried very good bikes,

I started to design our own models that were tailored to the German market and to the needs of German cyclists. The first bikes of this own series were launched in 1979, still bore the name Nishiki and represented one of those milestones for me and the company. From that moment on, it was clear that we wanted to develop and produce our own bikes. Another milestone was the creation of our first catalogue. Considering how digitalized and automated everything is today, nobody would believe how we cobbled it together back then. When thinking about how I was standing in front of the black and white photocopier to copy every single page to put them all together afterwards, I have to laugh. Today, we have an own department for graphic design and layout alone with highly skilled employees, not to men-



tion the copywriters, photographers and printers. Back then, I wrote everything by hand first before typesetting it. It was not only genuine handwork, but also a devil of a job! During the day, I took the pictures; in the evening, I wrote the texts and at night, I set the headlines with large adhesive letters. Creating this catalogue took several night shifts, however, it was worth the effort. It was the start of a nationwide business and without it, ROSE would not be what it is today. The first catalogue ran to only 64 pages and was printed with a circulation of 3000 copies. In the middle of the year 2000, the ROSE mail order catalogue was a real heavyweight on the German catalogue market with more than 800 000 copies and around 1000 pages. At that time, women repeatedly came to our sales assistants and complained

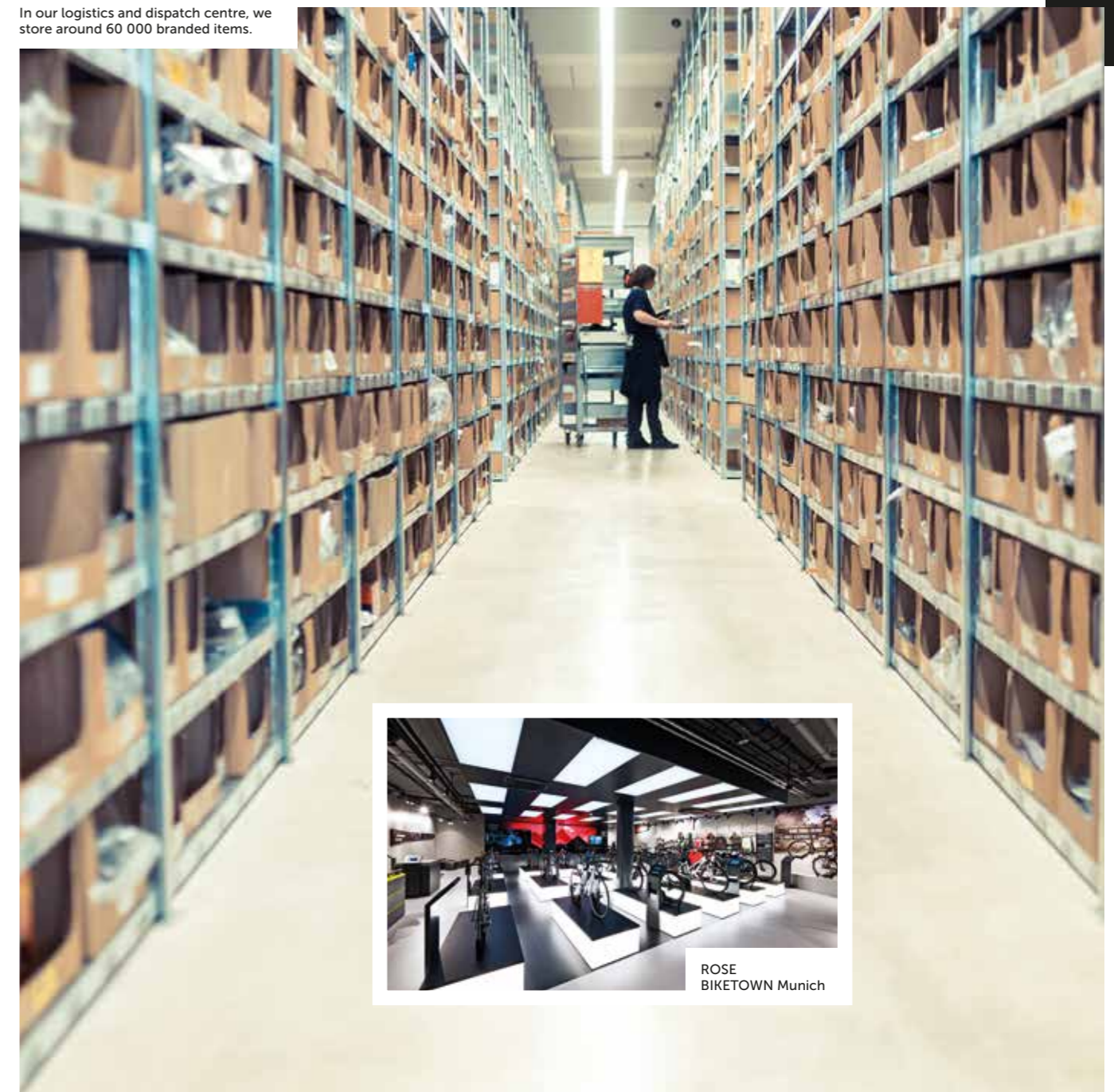
about their husbands spending more time with the catalogue in bed in the evenings than with them. Maybe that is why ROSE probably shares the blame for the current demographic change.

The mid-1980s saw a mountain bike boom controlling the cycling world. Despite my very strong passion for road cycling, I was also a real fan of the vehicle with knobby tyres. Back then, Canada was one of the seedbeds for mountain biking. I myself also spent some time over there, met a very good frame builder and designed our first MTBs with the name RED BULL together with him. The rights to the use of the name were soon clarified, the energy drink of the same name was still in its infancy back then and I did not want to expand into the food market anyway. This

is when the MTB chapter began for ROSE. At the same time, however, there was a waymark you can safely call a stumbling block. I wanted to be one of the first companies to offer cycling holidays in Canada and heli biking. Unfortunately, it turned out to be a real flop. I was at least five to ten years too early with my idea. Today, cycling holidays are a huge business and Canada is one of the most popular holiday regions.

In 1990, we decided to only build bikes for sporty use. Whether road bikes, mountain bikes or trekking bikes – we wanted all our bikes to have a sporty character. Of very high quality, with a great frame, selected components, very lightweight, not off the shelf, but custom-made. This is what has been run-

In our logistics and dispatch centre, we store around 60 000 branded items.



ROSE BIKETOWN Munich



1



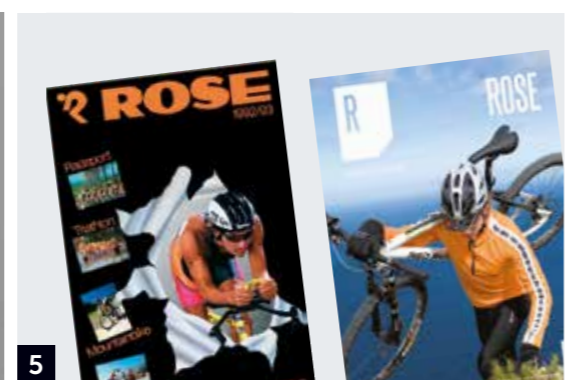
2



3



4



5

Milestones in the company's history:  
 1: The first shop  
 2: Münsterland cycling classic  
 3: The first catalogue, still photocopied  
 4: Historic head badge  
 5: The ROSE catalogue temporarily grew to almost 1000 pages

ning like a common thread through our company's philosophy until today: Build your own dream bike, your bike! Today, as then, customers can replace single components and thus configure their individual dream bike. Of course, with our support – on many levels. In the stores, via our order hotline or online via the bike configurator. I have always wished that people say: "Yes, that's a ROSE bike, but it's not just any bike, it's MINE. I have worked on it, too!" Many thousands of cyclists have already fulfilled my dream.

Apart from our huge dispatch department, it has always been important to me to present the bikes in an experienceable way. That is why we opened the extraordinary bike shop ROSE BIKETOWN in Bocholt in 2005 – another milestone. I still know how excited I was on this 17 March when the doors in the entrance area were opened for the very first time. I hoped that the people would be just as enthusiastic about BIKETOWN as I was. When the first visitors romped about the 6000-square meter big sales area and brought it to life, I knew I had succeeded.

Last year, we completely renovated ROSE BIKETOWN Bocholt to meet the latest demands on technology and the requirements of our customers. After the catalogue, the logistics centre, the BIKETOWN and a lot of bicycle components bore the name ROSE, it was time to also give our beloved cycles the family name. That is why we introduced the bicycle brand ROSE to the public in 2008. It all started with mountain bikes, because in the MTB sector, a completely new frame generation was developed. New developers, new bikes, a new style.



After the renovation, the ROSE BIKETOWN store in Bocholt shines like new.

I am incredibly proud of what we have achieved together in the last 110 years. Thank you for the great time I have had so far. I am looking forward to the next 110 years!"



A temple of bicycles made from glass and steel: ROSE BIKETOWN

We wanted the name to be an homage to our family tradition and to attract a new type of rider. Today, as in the past, the entire team does an incredibly good job. However, my great passion has always been road cycling. Full of curiosity and joy, I still like to test the prototypes (and sometimes also the new developments of our competitors). When looking at our sophisticated high-end road bikes, I am full of praise for everyone involved in the development process. I am especially proud and happy to see that our bikes achieve numerous test victories in German and European specialist magazines. Yet it is not only our road bike engineers that impress me again and again, but also our testers, designers and sales assistants in the field of mountain bikes, trekking bikes or accessories that are all real specialists in their field.

Times are changing and you cannot close your eyes to the changes ahead. In the past, I had to send drafts to Japan and wait two to three months for a reply to discuss frame geometries. Today, Japan is only a few clicks away. Nevertheless, the work requires just as much specialist knowledge as in the past. Yet not only cycling changes continuously, but the entire industry is subject to this change. One reason for us to move with the times and to open up new and exciting ways with our own customer's magazine CYCLE STORIES and a ROSE concept store in Munich. Time will show whether they will also become milestones, at least they are already some brightly shining waymarks.

Now I have talked about so many milestones and other marks and yet it was

at most a little excerpt from the history of ROSE. I have not lost my passion for cycling in all these years and I will not in future. I am incredibly proud of what we have achieved together in the last 110 years. Thank you for the great time I have had so far. I am looking forward to the next 110 years! ■

200% magnified 3D Bionic Sphere® System with anatomically optimised form.

It doubles the cooling effect, helps the body keep a stable body core temperature of 37 °C and leaves even more energy reserves for your training and your sporting performance.

Protected by Patent EP1476033, DK1476033T, SI1476033T, CN3807886, JP 4 546 734, CA 2475537



During activity:  
Cools when you sweat.



During recovery:  
Warms when you're cold.

The TWYCE innovation: the Y-Structure created from hydrophobic and hydrophilic fibres generates a "push – pull effect", which helps to transport sweat more quickly from the 3D Bionic Sphere® System, and to distribute it where it can evaporate with maximum cooling effect.



Hydrophilic yarn (evaporation).



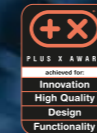
Hydrophobic yarn (transportation).

X-BIONIC®  
**TWYCE**  
DOUBLE COOLING, MORE PERFORMANCE.

*"If we could double the sweat evaporation zone, we would also have more cooling."*

Dr. René Rossi, EMPA Scientist

© 2016, X-Technology Swiss R&D AG



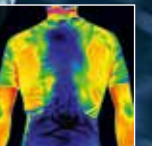
2016  
X-BIONIC® TWYCE



X-BIONIC® is winner of the "Most Innovative Brand Award" 2009, 2010, 2011, 2012, 2013, 2014, 2015 and 2016.

More Performance with  
37 °C CCR-Technology.

The thermal scan evidence: various structures optimise heat dissipation. Cool colours, such as those along the 3D Bionic Sphere® System in the centre of the back, identify the areas with high insulation. Benefit from this intelligent temperature management for increased performance.



X-BIONIC® TWYCE  
Biking Shirt Short  
French Blue/Black  
Item no.: 2159638



X-BIONIC® TWYCE  
Bike Bib Tight Short  
Black/Anthracite  
Item no.: 2159665

turn sweat into energy®

Developed by scientists – proven by athletes.  
[www.sportscience-laboratories.com](http://www.sportscience-laboratories.com) | [www.x-bionic.com](http://www.x-bionic.com)



More information at: [www.rosebikes.com/x\\_bionic](http://www.rosebikes.com/x_bionic)

# 12 QUESTIONS FOR ERWIN ROSE & THORSTEN HECKRATH-ROSE

ON THE OCCASION OF THE COMPANY'S ANNIVERSARY, TWO PEOPLE WHO OUGHT TO KNOW GET A CHANCE TO SPEAK TODAY: COMPANY FOUNDER ERWIN ROSE AND THORSTEN HECKRATH-ROSE. THE FIRST ONE WAS PART OF IT FROM THE VERY START, THE OTHER ONE LOOKS INTO THE FUTURE WITH GREAT ENTHUSIASM. THE TWO RUN THE ROSE BUSINESS WITH A LOT OF PASSION AND LOVE, DIVIDED INTO NARROW TYRES (ERWIN) AND WIDE TYRES (THORSTEN). SO, IT'S HIGH TIME FOR THE TWO TO ANSWER OUR QUESTIONS – 12 QUESTIONS FOR THE MANAGEMENT!

## 01 ROSE dispatches up to 7000 parcels per day – what was the worst selling product in the company's history?

Erwin Rose: No doubt: Loose-fitting MTB clothes from Canada in the 90s. After a cycling holiday in Whistler, British Columbia, I ordered an enormous amount of baggy shorts made from Cordura, loose-fitting MTB shirts etc. – MTB clothes nobody knew in Europe. "We will never sale these clothes, Mr. Rose!" was all my sales assistants said. The ladies turned out to be right.

## 02 Looking back, what was your most important bike, a real milestone?

Erwin Rose: A real milestone was the import of Japanese bikes in 1978/1979. Japanese material was not popular in the traditional road cyclist scene back then. Therefore, it was a high risk to import a whole container of Japanese frames and components. I could have never sold these amounts of road bikes here in the Münsterland region alone. So, I acted from necessity and started the catalogue selling of road bikes and components. At night, I wrote the texts for the first catalogues.

## 03 ROSE has grown from the smallest bicycle shop of Bocholt to a company with more than 350 employees. What do you miss most when thinking back to the beginning?

Erwin Rose: What made the early days so special surely is that

you really knew every colleague personally. Everything was closer, also with regards to space, of course. Until 1993, we managed the entire shipping process in the small shop and did everything we do now, but with only 50 people on around 1000 square metres. Today, we have 350 employees and 20 000 square metres. It has always been and still is excellent teamwork.

## 04 Steve Jobs, Albert Einstein, Donald Trump – are there any personalities that inspire you?

Thorsten: The exciting thing about us is that we have already been running this business with two generations for more than 20 years now. We entered the business with completely different technologies and under completely different conditions. What fascinates us is rather cycling as a way of life, the dynamics of the bicycle market and the challenges of industrial change than personalities. We all grew up in Bocholt, where people are proverbially born on a bike and where there are more bicycles than inhabitants. There is no better environment to get inspired. The fact that Erwin sold sewing machines in addition to bikes in the first years and that we now develop all bikes in-house, frequently achieve top marks in tests and offer the possibility to configure a bike with a smartphone shows that there are many possibilities when you are open to further development. These new possibilities are our source of inspiration.

## 05 What will bicycles be like in 20 years? Electric, ultra-light, networked?

Thorsten: You can make a safe bet on those technologies, as they will definitely be an important part of bicycles in future. They have actually already become reality – yet not for the broad mass of bicycles. We also assume that a local production, for instance of bicycle frames, will become more important. Especially with regards to innovative materials and manufacturing processes, we expect major innovative progress. Presumably, this will make bikes even more individual, which fits in with our strategy, as we already focus on individuality.

## 06 You are a classic family-run business. What do you talk about at family meetings?

Thorsten: No matter where we meet, we always talk about bicycles and the company. As there is sometimes not enough time to coordinate with one another at work, we automatically discuss ideas or exchange information at any given opportunity. When the atmosphere is getting too business-like though, we bring each other back into line. This works for around half an hour, but then we are again right in the middle of it. We simply cannot do without bikes...

## 07 How do perfect holidays look like: cycling in the Alps or lazing around in the Algarve?

Erwin Rose: I prefer a combination of both relaxation and cy-

cling. This is how to relax best. I think we agree that the best place for this is Majorca. Over there, you have all possibilities and perfect conditions for cycling.

## 08 Who is right when you have different opinions?

Erwin Rose: Both! However, the truth is always somewhere in the middle. It's the mix that makes up the quality of our cooperation. On the one hand, the experience and infallible sense of the bike trends of tomorrow and on the other hand, the impulses from digitalization and the testing of new concepts Thorsten mostly takes care of.



Thorsten: Even though we do not always agree immediately, we really appreciate that there are no generational conflicts. Erwin totally trusts us when it's about further developing the organisation and business or following new avenues. Especially in family-owned businesses, this is everything else but given and requires a lot of calmness. Hopefully, we will also be that calm in future.

## 09 How many bikes do you have in your garage at home? What are your real gems?

Erwin Rose: I have two vintage cars in my garage I have repaired myself and cared for for 20 years: an Austin Healey MK3 and a Triumph TR6. Apart from that, my everyday bike, a MULTISTREET, and the BLACK CREEK of

my wife are standing in the garage. In my bike room, I store an X-LITE CW, an X-LITE CDX Gran Fondo, a XEON CDX CROSS Grinder and an MTB full-susser THRILL HILL 27,5. I love to have the right bike for different uses. My X-LITE CW with a high average speed is my favourite for sporty rides. My X-LITE CDX is by far the most used bike. I love this all-rounder that is lightweight, comfortable and zippy thanks to great aerodynamics. It's a bike that impresses with a lot of characteristics. I like to ride my XEON CDX CROSS Grinder on narrow tracks in the forest. It is an all-rounder I love to train with during

five bikes in my garage, I would definitely go for the XEON CDX CROSS-4400 GRAVEL 1x11, if I had to decide. It simply is the perfect universal weapon for me. I use the bike to go to work every day and as it is equipped with mudguards, I even do not have to get changed. Thanks to a low weight and great off-road performance, I can take every rat run or turn the way back home into a training round. For me, this bike currently is the epitome of universality.

## 11 110 years of ROSE – what are you particularly proud of?

Erwin Rose: We are especially proud that we have successfully mastered the changes in the bicycle industry and industry in general with our team. Over the years, we have faced many new challenges that helped us grow. We are proud that ROSE has become a synonym for excellent service and innovative bikes. What is also important to us is that our family business has shown a solid development and retained its independence. This allows for flexibility and fast decision making.

## 12 What would you do differently, knowing what you know today?

Thorsten: In order to further develop, it is

important to try new things and to make mistakes. When doing mistakes, you often advance faster than you would when everything goes off smoothly. That is why we are always eager to try out new things and to use all impulses and chances. We would have definitely speeded up the progress towards e-commerce and we would have used our brand name ROSE for bikes earlier. Yet I think we are well prepared for the next 110 years. ■

## 10 If you were only allowed to have one bike, which bike would that be?

Thorsten: At the moment, the choice is simple. Even though I do currently have



# WHAT'S YOUR BIKE, PRO?

SCHLADMING-DACHSTEIN DISCOVERED TOGETHER WITH  
THE PRO RIDERS MANUEL GRUBER AND DAVID TRUMMER

AUTHOR & PICTURES JAN VOLBRACHT

300 MOUNTAIN LAKES, 1000 SOURCES AND 100 WATERFALLS – THE SCHLADMING-DACHSTEIN REGION IS ONE OF AUSTRIA'S MOST WATER-RICH AREAS. AND I WILL DEFINITELY NEED A LOT OF WATER, BECAUSE TODAY, I WILL ACCOMPANY TWO REAL PRO RIDERS. OUR BIKES: A GROUND CONTROL, A GRANITE CHIEF AND A SOUL FIRE. OUR LOCATION: THE TRAILS IN THE HOLIDAY REGION OF SCHLADMING-DACHSTEIN AND PLANAI BIKE PARK.

**M**y camera backpack is packed and my mission is clear: Today, I will meet the Austrian world cup downhillers Manuel Gruber and David Trummer on behalf of Cycle Stories. A special task for me, as I am not only a photographer, but also a passionate cyclist who likes to spend his time on demanding trails. Manuel and Daniel ride for the ROSE Racing Project team. Between races, they like to come to Styria for training. Manuel tells me: "Modern downhill tracks are becoming longer, tougher and more demanding. You have to be top fit for that. That is why we spend so much time on our trail bikes. It allows us to strengthen the muscle groups we need for races in a targeted way."

A trail bike offers the possibility to improve technical skills and endurance. Therefore, the two pro riders ride a GROUND CONTROL and a GRANITE CHIEF today. The GROUND CONTROL is a classic touring full-susser: It is very agile and nimble thanks to 27,5" wheels and with a rear travel of 130 mm, it also has enough reserves to easily master rough tracks. It especially feels at home on winding tracks and in tight bends. Here, the GROUND CONTROL impresses with excellent handling. Its balanced geometry predestines it for long tours. Thus, it can show its strengths on the expected long slopes in Schladming-Dachstein. The top model GROUND CONTROL 3 comes with an extensive Shimano equipment: rear derail-

leur, front derailleur, shifters, cassette and crankset all bear the XT label. At the front, an excellent FOX 34 Float FIT DPS Performance Elite suspension fork carries out its duties. The bike rolls on high-quality DT Swiss XM 1501 system wheels.

The GRANITE CHIEF offers the same wheel size, but comes with 150 mm of travel which is around 20 mm more than the GROUND CONTROL. With that, it has even more reserves downhill and presents itself as a real trail racer. It quickly reacts to steering inputs – it is a little enduro bike with the look of a trail bike. It is efficient to pedal and accelerate though, its range of uses is huge. The GRANITE CHIEF is a versatile and reliable tool with a lot of sophisticated details. The clever cable inlets have been newly designed to eliminate rattling noises. In addition, the frame comes with an effective down tube protection to protect from flying rocks.

When we ride past the place name sign of Schladming, the tyres are still rolling over asphalt. We are still in the valley. We still have power in our legs and water in our drink bottles. Yet we soon take a turn into the forest path, soon we start to gain elevation, as we enter our first climb up to Lake Giglach. "So, the times when you could party before a race and ride onto the podium the next day are over?" I want to know. The two start to laugh. "Absolutely, at least with regards to the world cup!" David tells me. We turn off into a



A relaxed start into the day: trail fun in the morning

**We soon take a turn into the forest path, soon we start to gain elevation."**

forest path that will lead us to the mountain lake where we have an appointment. Johanna is already waiting for us at the toll booth. She grew up here and will show us the trail around Lake Giglach. After a short "Hi everyone" we ride off through the idyllic valley and up the mountain. I can see a mountain hut coming up behind the mountain top, but Johanna pushes us further: "This is where the real climb begins!" Unfortunately, she will be proved right. The forest path

is getting steeper and steeper. Here, it definitely pays off that our bikes are real mountain goats.

However, when we arrive at Lake Giglach on top we agree: Each metre climbed was worth the effort. The view is breathtaking. The calm and clear lake lies between majestic rocks. We stop for a second to enjoy the view before we continue our way on the circuit track. Again and again, our eyes wander over the lake to the mountain tops.





Johanna knows the way, Schladming-Dachstein is her home base.

SHIMANO

SH-M088  
LIMITED  
EDITION

ALL  
OF  
THE  
COMFORT

NONE OF THE STRESS



FOR GREATER  
PEDAL EFFICIENCY,  
STABILITY AND COMFORT

Save an exclusive copy from the limited edition now!  
Item number: 2255561 | [www.rosebikes.com/m088](http://www.rosebikes.com/m088)



Paul Lange & Co. OHG | [www.paul-lange.de](http://www.paul-lange.de) Thalinger Lange GmbH | [www.thalinger-lange.com](http://www.thalinger-lange.com) Fuchs-Movesa AG | [www.fuchs-movesa.ch](http://www.fuchs-movesa.ch)



Taking a bath or continuing the ride? Lake Giglach leaves it up to you to choose!



**Schladming-Dachstein offers a lot of variety and so many possibilities. There are lots of different tracks to ride.**

When the trail is getting narrower and more demanding, David and Manuel show that it is not without reason that they take part in world cup races. On the rocky and narrow sections, the two pick up speed. Johanna and I can no longer keep up with them, as we rather reduce our speed. We only meet again at the Ignaz Mattis hut. When we arrive, they have already ordered a Kaiserschmarrn. We share and share alike while enjoying the view. Lost in thought, Johanna says: "I love to come back here from time to time. Schladming-Dachstein offers a lot of variety and so many possibilities. There are lots of different tracks to ride, ranging from technically and physically demanding tracks like this one or Planai bike park through to more relaxed tracks I also ride with my mother." After we have had a delicious coffee, we enter the downhill trail. Next to the forest path, David and Manuel again and again find little trails to put their knobby tyres on. Back down we part company. Johanna got to leave to sit down at her desk: "Duty calls. I really need to finish my term paper."

The guys take me to the bike park. When we buy our lift tickets at the rental station, we see a father with his quite young

daughter. "So Planai must offer even more than the legendary world cup downhill track," I think for myself.

David and Manuel have their downhill weapons with them, their SOUL FIRE bikes. They are based on an extremely robust aluminium frame with sophisticated kinematics and a travel adjustment from 180 mm to 190 mm. The main swingarm bearing provides an extremely stiff rear stay which also features the Boost standard. As it is equipped with 27,5" wheels, the SOUL FIRE offers a lot of grip and best roll-over characteristics. In addition, it impresses with playful handling. "We also use the SOUL FIRE in world cup races, as we appreciate the advantages of 27,5 inches and really want to use bikes with this wheel size," the two tell me while we are pushing our bikes into the lift.

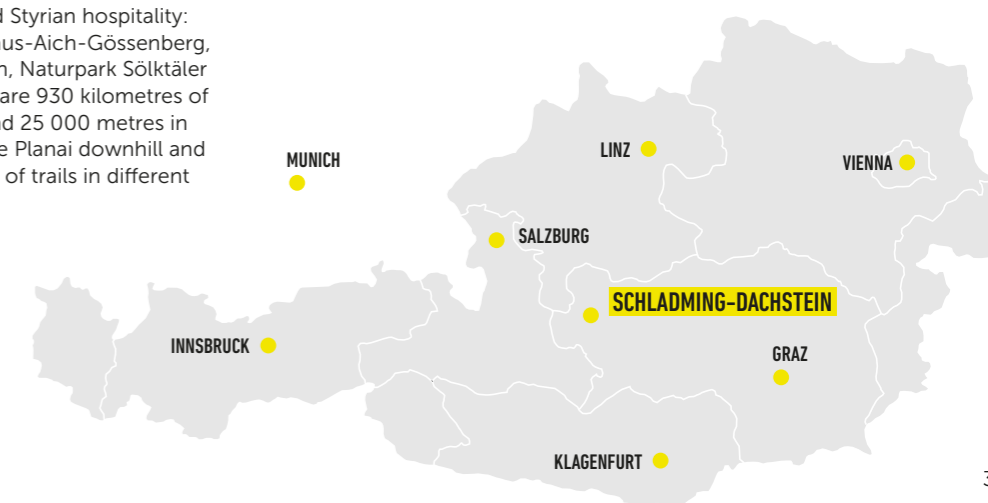
As you would expect from pro riders, David and Manuel have equipped their bikes to make them suitable for world cup use. Some secret ingredients decorate their well-equipped bikes, such as a Rock Shox Vivid rear shock with titanium spring and customized Spank cockpits.

On top of the lift, I see the two disappear towards the "Fairy Trail". The easy track was opened in 2016. With a moderate gradient and easy obstacles, it is perfectly suitable for bike park newcomers – a nice warm-up for the pros. We ride towards the flowline. "Let's start the warm-up!" Manuel shouts while opening the brakes and disappearing into the trail. David is right at his rear wheel. I even struggle to stay in visual contact. However, you can even have a lot of fun in the Planai bike park when you are not part of the world

#### About Schladming-Dachstein

Schladming-Dachstein is less than an hour's drive away from the German border. The popular travel destination lies in the upper Ennstal valley in the Liezen region of Styria. The holiday region Schladming-Dachstein consists of seven tourists centres with a huge range of offers and Styrian hospitality: Schladming, Ramsau am Dachstein, Haus-Aich-Gössenberg, Gröbminger Land, Öblarn-Niederöblarn, Naturpark Sölktaier and Grimming-Donnersbachtal. There are 930 kilometres of mountain bike trails in total, with around 25 000 metres in altitude. Moreover, the region offers the Planai downhill and bike park with more than 12 kilometres of trails in different levels of difficulty.

**For more information see:**  
[www.schladming-dachstein.at](http://www.schladming-dachstein.at)  
[www.bikeparkplanai.at](http://www.bikeparkplanai.at)







**Schladming-Dachstein is so versatile you can hardly discover it on a single weekend."**

cup circus. The track is full of jumps, drops and, of course, it offers many, many berms. On all difficult sections, you can find so-called Chicken Ways that allow you to simply ride around the obstacles. In the end, the two chase me over the pump track. I am amazed by the power the two guys have.

After a long day on the bike, we all ride back to our hotel Waldfrieden. With a shandy and an apple spritzer in our hands, we sit in the winter garden and look down into the valley until one after the other disappears into bed or to the wellness area.

Schladming-Dachstein is so versatile you can hardly discover it on a single weekend. Not only trail bikers will get their money worth, but also freeriders and bike park newcomers. Everything is surrounded by the impressive south face of the Dachstein mountains and the Schladming Tauern. Plenty of nature and trails, a real biker's paradise with fun factor – even when you are always riding behind like me... ■



Manuel Gruber and David Trummer – passionate bike pros

## THE QUICK WAY!

### SIGMA ROX 11.0 GPS SET BIKE COMPUTER\*

The top model. Shows everything you need to know at a glance: speed, heart rate, power, calories and much more. With GPS track navigation and sport profiles.



€ 224,95  
Item no.: 2251879

### SQLAB 411 INNERBARENDS

Bright sparks: The 411 INNERBARENDS are not mounted on the outer end of the grips, but on the inner end. They provide relief for your wrists for a comfortable feeling.



€ 39,95  
Item no.: 2251609



€ 119,95  
Item no.: 2084556

### FIVE TEN FREERIDER CONTACT FLAT PEDAL SHOES

The update: The successor model of the FREERIDER Xvi notches up its performance. STEALTH Mi6 sole for an outstanding grip, made from robust synthetic leather, with sewn sole.

### 100% AIRMATIC FAST TIMES CYCLING SHIRT

For really fast riders. This cycling shirt offers high breathability and a perfect fit for wild enduro rides. Material: 100% polyester; mesh: 92% polyester, 8% elastane.



€ 59,95  
Item no.: 2231118

€ 179,00  
Item no.: 2195302

### MAVIC CROSSRIDE DISC MTB WHEELS

Roll smoothly – proven quality from Mavic. Hubs with cartridge bearings, high thru axle compatibility and, thanks to a 26,5 mm wider rim, also suitable for trail riders.



€ 89,95  
Item no.: 2252622



### IXS THE CARVE EVO KNEE PROTECTORS

A life insurance for your knees: protectors with a high protection level for your knees thanks to innovative EVA padding and X-MATTER foam. Easy to put on, breathable inserts, durable thanks to kevlar.

\*Please note the battery law information on [rosebikes.com/battg](http://rosebikes.com/battg)

# ON THE SHOPPING LIST

## MOUNTAIN BIKE SHOPPING MALL

WHAT ARE YOU WAITING FOR? GO AND HIT THE TRAIL! BUT DON'T FORGET TO USE THE RIGHT EQUIPMENT! IN THIS WAY, MOUNTAIN BIKING WILL BE EVEN MORE FUN!

### FINISH LINE TEFLON PLUS LUBRICANT

Teflon – nothing will stick to it. What is regarded as a rather negative human characteristic is expressly desired for lubricants. The FINISH LINE TEFLON PLUS is a **100% synthetic oil** – clean and lasting. Microscopic irregularities on metal are filled with diverse **additives like Teflon and Trilinium**. Besides, it improves the components' gliding properties and finishes squeaking. Available in different sizes.

60 ml € 3,90  
(Basic price 1 l € 65,00)  
Item no.: 492018



€ 142,90  
Item no.: 2250841

### SQLAB 611 ERGOWAVE ACTIVE TITUBE

The dream of the perfect frame is coming closer to reality, at least for trail and enduro riders. The 611 ERGOWAVE ACTIVE TITUBE MTB saddle by SQLAB offers a perfect hold to the rear and **best pressure distribution** even on wild downhill rides, thanks to a wave-like shape and a raised rear part. **Elastomers for suspension** are included in three different hardness levels, a high-quality Kevlar cover protects sensitive areas.

### ROSE DRUCKMACHER GF-56 FLOOR PUMP

This floor pump with a robust pressure cylinder made of steel and an extra-long hose allows for comfortable inflation. This is also achieved through an ergonomically shaped plastic handle and an easy-to-read **2,5" gauge for up to 11 bars / 160 PSI**. The practical Clever Twin-Valve 2-in-1 pump head is suitable for **Presta, Schrader and Dunlop valves**.

€ 22,95  
Item no.: 2224321



### THULE EASYFOLD XT 933 BIKE RACK

The most important tuning part of every motor vehicle: a THULE EASYFOLD XT 933 bike carrier. Makes room for the essentials. Whether you have a road bike, an MTB with a wide handlebar, an e-bike or a fat bike – this rack is compatible with all kinds of bikes thanks to many clever features. The carrier holds two bikes, a **large folding angle** makes sure you will also reach the trunk when the carrier is loaded. Pst: Also **available for three bikes** with item no.:2255886.

€ 699,95  
Item no.: 2255885

### LEZYNE DIGITAL SHOCK DRIVE SHOCK AND SUSPENSION FORK PUMP\*

With this shock and suspension fork pump, Lezyne sets a high standard: The DIGITAL SHOCK DRIVE impresses with a **digital high-precision pressure gauge**. The compact and light aluminium construction features an integrated flexible hose that **can be turned through 360°** and a pump head with screw connection for Schrader valves.

€ 69,95  
Item no.: 2256211



### RIE:SEL DESIGN SCHLAMM:PE MUDGUARD

No more mud freckles: The rie:sel design SCHLAMM:PE mudguard protects your complexion and t-shirt. The little helper weighs only 33 grams and is designed to meet the **requirements of modern suspension forks**. Easily installed on the suspension fork with cable ties. Can also be used alternatively **as a rear shock or rear stay fender** on many bike models. Available in many different designs.

€ 9,95 each  
Item no.: 2254705 (stealth)



€ 149,95  
Item no.: 2252527

### RUDY PROJECT FOTONYK SPORTS GLASSES

Quite clever: The FOTONYK sports glasses **feature shock-absorbing bumpers** on the lower frame that can be removed whenever you feel like it. The lenses, too, are quick and easy to replace. Thanks to an **integrated ventilation system** inside the frame, the lenses do not fog up that easily. Nose bridges and temple ends consist of a metal core covered with a thermoplastic elastomer and can thus be shaped in any direction.

### VAUDE MOAB PRO 20 M PROTECTOR BACKPACK

Give me some adventures! This VAUDE protector backpack is storage miracle and patron saint in one. The **TÜV approved ORTEMA CB1 LIGHT back protector** offers protection on ambitious downhill sections, the **SYNERGY MOLD ACTIVE** ventilation system ensures best air exchange. A main compartment with organizer, a **detachable tool** compartment, a helmet mount and many more packing options ensure everything is in perfect order.

€ 189,95  
Item no.: 2250214 (royal)



### ZIMTSTERN OTIZ CYCLING SHIRT

In summer, too, two are better than one: The OTIZ cycling shirt by Zimtstern impresses with two different materials. While being especially breathable on chest, shoulders and sleeves, the lower part is made from a soft, **fast-drying fabric with antibacterial SANITIZED treatment**. A **short front zip with a stay-down zipper pull** and chin guard additionally offers fresh air.  
*Material: 100% polyester.*

€ 74,95  
Item no.: 2254421



€ 49,95  
Item no.: 2254088 (black)

### POC RESISTANCE ENDURO GLOVE

Have everything well in hand – the Resistance Enduro cycling gloves with a palm made from perforated synthetic leather offer **perfect grip** on the handlebar, even when it's getting unpleasant. The back of the hand is made of **breathable** fabrics, silicone prints on index and middle finger offer a firm hold on shift and brake levers. *Material: back of the hand: 90% polyester, 10% elastane; palm: 60% polyamide, 40% polyurethane.*

### O'NEAL SINNER KEVLAR KNEE RACE GUARD KNEE PROTECTORS AND REPLACEMENT KNEE CAP

Uncompromising bodyguard for valuable kneecaps: These O'NEAL protectors convince with their inner values. Inside, there is an IPX protector that hardens in case of an impact and returns to its original shape afterwards. When it's getting rougher, you can also rely on help from the outside: a plastic shell **attached with velcros** offers additional protection. Thanks to a **side zip**, the protectors are easy to put on and take off!

Knee protectors: € 109,95  
Knee cap: € 5,95  
Item no.: 2255585  
Item no.: 2255587



€ 69,95  
Item no.: 2252700

### ENDURA HUMMVEE SHORT II

Made for the Scottish Highlands: There are only few cycling shorts that are as robust as Endura's HUMMVEE shorts. Their **durable nylon mini rip stop fabric** with a water-repellent surface coating even braves toughest conditions. The **ENDURA CLICKFAST SYSTEM inner pants** are removable and the elastic waistband additionally comes with a belt.  
*Material: 70% polyamide, 15% polyester, 10% elastane, 5% polyurethane. Inner pants: 90% polyester, 10% elastane.*

### ION RASCAL SHOES

Something for your feet and your eyes: The RASCAL by ION is a style icon packed with high-end features. **The light, synthetic leather** used offers high breathability and the combination of a **classic lacing and a velcro bar** ensures a perfect fit. The anti-slip rubber sole (SPD compatible) with EVA midsole guarantees top power transfer to the pedals and comfortable walking.

€ 139,95  
Item no.: 2250453 (blue)





# TRAIL FUN AROUND THE RESCHEN PASS

Actually, I would like to travel south and finally soak up some sun and energy after all that rain up north. Also, my bike needs to kick some dust again instead of getting constantly stuck in the mud. The weather is already improving between Landeck and Pfunds and the sun pushes the last clouds away. Reason enough to stay in Austria and to take a stop in Nauders. Much has been done for MTB tourism in the last few years here in the tri-border region Austria-Switzerland-Italy; new trails have been created or existing hiking trails have been turned into flowy enduro pistes.

A tour with three lifts and the region's best trails is suggested by Gerry, experienced guide of the Bike-Hotel Central, and he knows that this will convince me immediately. Nauders is located in around 1.400 metres above sea level, in a high mountain valley between the Finstermünz Pass to the north and the Reschen Pass to the south. The neighbouring mountains are all rocky giants, which promise steep, interlocked trails. After a leisurely ascent with the Bergkastel cable car, we get a first fantastic view to the Ortler, the king and highest mountain in South Tyrol, and its glaciated neighbours. I am surprised that the soil here is so dry, which is of course is a great advantage when considering the difficulties, the Bunker Trail holds for us. Gerry tells me that Nauders already enjoys the dry climate typical for the Vinschgau District and that this location offers favourable weather conditions. The beautiful view to Lake Reschen accompanies us until we get to the forest

and change to the Adige Trail, which has been named after Italy's second-longest river and which starts here by the wayside. This flowy trail, which leads across wonderful forest soil, ends at the northern shores of Lake Reschen and we cycle past the sunken church of Graun in the Vinschgau District in southern direction to the Haideralm lift.

Having enjoyed a wonderful espresso at the upper terminus, Gerry keeps his promise not to cycle manmade trails only and delights me with a sequence of technically challenging trails which are hard to beat. The only downer is that we have to push the pedals all the way from Lake Haider and Lake Reschen in northern direction to the Schöneben lift, which takes us a few altitude metres closer to the top of the mountain. The upper Schöneben Trail is genius but only a short pleasure as we are already climb uphill again to enjoy a late lunch on the Reschener Alm. "Now it's getting really cool!", says Gerry, who knows this area like the back of his hand. He also has given some of the bike trails here a finishing touch. The 3-Country Trail leads first to Lake Grünsee, whose beauty we hardly notice as we concentrate on the countless root-covered passages. We continue to Lake Schwarzsee, which is not only natural landmark but also Austria's highest-situated hellebore pond. With enough energy left, we take the ascent to the Mutzkopf in addition and, instead of the obvious Gerry Trail, we pick up the Elven Trail downhill to Nauders – a trail after my own heart.

Simply sensational, this is my verdict after this unique tour in the Nauders region at the Reschen Pass where one trail is better than the other – excellent choice, Gerry



## NAUDERS AT THE RESCHEN PASS

**MORE INFORMATION ABOUT NAUDERS AT THE RESCHEN PASS:**  
[www.nauders.com](http://www.nauders.com)

**THE BIKE SPECIALIST IN THE REGION:**  
 Alpen-Comfort-Hotel Central, [www.hotel-central.at](http://www.hotel-central.at)

**INFORMATION ABOUT ALL MOUNTAIN BIKE REGIONS AND HOTELS:**  
[www.bike-holidays.com](http://www.bike-holidays.com)



# SPORTS NUTRITION MADE IN GERMANY



For all Xenofit products see:  
[rosebikes.com/xenofit](http://rosebikes.com/xenofit)



# LA PALOMA IN LA POMA!

WINTER TRAINING WITH JAKUB VENCĽ  
AND MARC DIEKMANN IN BARCELONA

AUTHOR & PICTURES JAN VOLBRACHT

DIRTY WEATHER IN GERMANY, ALL TRAILS IMPASSABLE, PURE TRISTESSE? THAT DOESN'T HAVE TO BE! "GOODBYE, WINTER!" IS WHAT THE TWO DIRT JUMPERS JAKUB VENCĽ AND MARC DIEKMANN SAID TO THEMSELVES BEFORE GETTING ONTO A PLANE AND HEADING OFF TO BARCELONA. IN THE LA POMA BIKE PARK, THEY MET A BUNCH OF LIKE-MINDED PEOPLE AND FOUND LOADS OF PRIME TRAILS!

**V**iewed from above, La Poma bike park looks like a lunar landscape – and like a dream landscape to dirt jumpers! Like dozens of anthills the jumps snuggle up against a slightly sloping hillside. Behind them are lots of North Shore trails, a foam pit and a pump track.

This is the winter hotspot of top riders. The park offers year-round good weather for dirt jumping and great fun. Jakub and Marc had good reasons to choose this spot for their little escape. The trails are extremely well looked after and of highest quality, the crème de la crème of international top bikers has contributed to the making of the park.



No need for a between-seasons jacket: Jakub Vencľ and Marc Diekmann in La Poma

**For us, it is important to have perfect training conditions, especially in winter."**



Jakub soars through the sky of Barcelona.



Don't fly too high, my friend! Jakub speeds up.

"For us, it is important to have perfect training conditions, especially in winter," says Marc Diekmann, "because winter is the perfect time to learn the new tricks you want to show in the next season. Summer hardly leaves any time to intensely work on new things, because our calendar is almost always full of events then."

What also matters to Jakub and Marc is the exchange with other pro riders. The dirt jump family stands together – they

**Summer hardly leaves any time to intensely work on new things, because our calendar is almost always full of events then."**

help and advice each other, they train and party together. And when the sun goes down at the horizon, the near city of Barcelona tempts you with its impulsive night life and cultural variety. When the dust settles in the evening and Jakub Vencl and Marc Diekmann pack in their dirt bikes, they can be sure that there is hardly any better place in the world for a winter holiday than La Poma. ■

Want to go there, too?  
[www.lapomabikepark.com](http://www.lapomabikepark.com)



# ➤ Bring your bikes



### Thule EasyFold XT 933

The fully foldable, compact, and easy-to-use towbar-mounted bike rack for all types of bikes. Fits up to 2 bikes.

Ordernr.: 2255885  
 €699,95



### Thule EasyFold XT 934

The fully foldable, compact, and easy-to-use towbar-mounted bike rack for all types of bikes. Fits up to 3 bikes.

Ordernr.: 2255886  
 €799,95



### Thule EasyFold XT 2-bike Carrying Bag

Protects you and your car from dirt when transporting and storing the Thule EasyFold XT bike rack. For Thule EasyFold XT 933.

Ordernr.: 2255891  
 €49,95



### Thule EasyFold XT 3-bike Carrying Bag

Protects you and your car from dirt when transporting and storing the Thule EasyFold XT bike rack. For Thule EasyFold XT 934.

Ordernr.: 2255888  
 €39,95



### Thule EasyFold XT Loading Ramp

Convenient foldable ramp for easy loading and unloading of your bikes.

Ordernr.: 2255891  
 €49,95



# CYCLEFASHION



POC TECTAL helmet  
Item no.: 2254007  
€ 199,95

POC DO BLADE sports glasses  
Item no.: 2254012  
€ 229,95

POC RESISTANCE PRO ENDURO TEE shirt  
Material: 72% polyamide, 28% elastane  
Back panel: 88% polyester, 12% elastane  
Item no.: 2254055  
€ 179,95

POC RESISTANCE PRO ENDURO shorts  
Material: 95% polyamide, 5% elastane,  
Reinforcements: 100% polyurethane,  
Lining: 100% polyester  
Item no.: 2254057  
€ 139,95

POC RESISTANCE ENDURO gloves  
Material: back of the hand:  
90% polyester, 10% elastane, palm:  
60% polyamide, 40% polyurethane  
Item no.: 2254088  
€ 49,95

POC JOINT VPD 2.0 knee protectors  
Item no.: 1911101  
€ 99,95

POC RESISTANCE socks  
Material: 80% Polyamid,  
20% Elasthan  
Item no.: 2254091  
€ 19,95

SHIMANO SH-ME7 MTB shoes  
Item no.: 2251333  
€ 199,95

ALPINA MYTHOS 3.0 LE MTB helmet  
Item no.: 2251220  
€ 89,95

Nike FLEET glasses  
Item no.: 2254768  
€ 119,00

Zimtstern KELZIE women's cycling shirt with ¾ sleeves  
Material: 100% polyester  
Item no.: 2254469  
€ 74,95

Zimtstern TAILA women's cycling shorts  
Material: 90% polyamide,  
10% elastane, lining: 100% polyester  
Item no.: 2254463  
€ 109,95

O'NEAL ELEMENT gloves  
Material: 49% polyamide,  
43% polyurethane, 8% polyester  
Item no.: 2252191  
€ 22,95

FOX DH socks  
Material: 90% polyamide,  
6% polyester, 4% elastane  
Item no.: 2203753  
€ 9,95

NORTHWAVE OUTCROSS PLUS women's trekking shoes  
Item no.: 2252449  
€ 129,95



FOX FLUX 1.5 helmet  
Item no.: 2162951  
€ 94,95

uvex SPORTSTYLE 117 glasses  
Item no.: 2252049  
€ 49,95

FOX ASCENT jersey  
Material:  
89% polyester,  
11% elastane  
Item no.: 2254242  
€ 74,95

FOX ASCENT bib shorts  
Material:  
85% polyester,  
15% elastane  
Item no.: 2254244  
€ 129,95

FOX DIRTPAW RACE gloves  
Material: 61% polyamide,  
16% polyurethane, 14% elastodiene,  
7% polyester, 2% elastane  
Item no.: 1965591  
€ 31,95

FOX DH socks  
Material: 90% polyamide,  
6% polyester, 4% elastane  
Item no.: 2203744  
€ 9,95

SIDI EAGLE 7 MTB shoes  
Item no.: 2241948  
€ 189,95

MAVIC AKSIUM ELITE W women's helmet  
Item no.: 2252114  
€ 89,95

ROSE PS 07 Photochromic glasses  
Item no.: 2240754  
€ 64,95

MAVIC SEQUENCE GRAVIC women's jersey  
Material: 100% polyester  
Item no.: 2252337  
€ 79,95

MAVIC ECHAPPÉE women's cycling shorts  
Material: 88% polyester,  
12% elastane, inner pants:  
89% polyester, 11% elastane  
Item no.: 2252340  
€ 79,95

ROECKL IDEGAWA gloves  
Material: back of the hand:  
82% polyamide, 14% elastane,  
4% polyurethane, palm:  
85% polyester, 15% polyamide  
Item no.: 2162720  
€ 39,95

ROSE ERGO SPORT socks  
Material: 70% polyamide,  
27% polypropylene, 3% elastane  
Item no.: 1913932  
€ 6,50

VAUDE ARESA TR trekking shoes  
Item no.: 2149808  
€ 99,95







**FOX METAH helmet**  
Item no.: 2204196  
€ 139,95

**OAKLEY CATALYST glasses**  
Item no.: 2192703  
€ 118,00

**ION SEEK DR technical shirt**  
Material: 85% polyester,  
15% cotton  
Item no.: 2250444  
€ 39,95

**ION TRAZE\_AMP cycling shorts**  
Material: 100% polyester,  
inserts: 88% polyester, 12% elastane  
Item no.: 2250426  
€ 99,95

**100% RIDE CAMP cycling gloves**  
Material: 69% polyamide,  
14% polyurethane, 7% polyester,  
7% elastane, 3% cotton  
Item no.: 2253299  
€ 29,95

**ION BD 2.0 Protection socks**  
Material: 59% polyester,  
29% polyamide,  
10% cotton, 2% elastane  
Item no.: 2250995  
€ 39,95

**ION RASCAL trekking / MTB shoes**  
Item no.: 2250453  
€ 139,95

**ION RAMPART 16 I backpack**  
Item no.: 2250459  
€ 119,95

**O'NEAL DEFENDER helmet**  
Item no.: 2168803  
€ 79,95

**ALPINA RANOM glasses**  
Item no.: 2251312  
€ 24,95

**ION SCRUB\_AMP women's long-sleeved cycling shirt**  
Material: 100% polyester, inserts:  
86% polyester, 14% cotton  
Item no.: 2250382  
€ 89,95

**ION TRAZE\_AMP women's cycling shorts**  
Material: 100% polyester  
Inserts: 88% polyester, 12% elastane  
Item no.: 2250374  
€ 99,95

**O'NEAL ELEMENT gloves**  
Material: 49% polyamide,  
43% polyurethane, 8% polyester  
Item no.: 2252191  
€ 22,95

**O'NEAL JUNCTION LITE knee protectors**  
Material: 43% polyamide, 24% polyurethane,  
19% polyester, 11% polychloride, 3% aramid  
Item no.: 2168627  
€ 59,95

**FIVE TEN 5.10 socks**  
Material: 60% polyamide (nylon),  
39% polyester (Coolmax),  
1% elastane (Lycra)  
Item no.: 2084592  
€ 14,95

**FIVE TEN FREERIDER CONTACT LADY flat pedal shoes**  
Item no.: 2169723  
€ 119,95



**ALPINA CARAPAX helmet**  
Item no.: 2251201  
€ 114,00

**ALPINA EYE-5 HR S CM+ glasses**  
Item no.: 2251295  
€ 79,95

**VAUDE MOAB LS women's shirt**  
Material: 95% polyester, 5% elastane  
Item no.: 2250071  
€ 54,95

**VAUDE TREMALZO skirt II**  
Material: 67% polyamide,  
20% polyester, 13% elastane,  
Inner pants: 92% polyester, 8% elastane  
Item no.: 2250081  
€ 89,95

**CARRERA FOLDABLE CRIT helmet**  
Item no.: 2176404  
€ 129,95

**RUDY PROJECT SENSOR glasses**  
Item no.: 2086998  
€ 74,00

**CRAFT RIDE windbreaker**  
Material: 100% polyester,  
Inserts on collar and cuffs:  
89% polyester, 11% elastane,  
Mesh under the arms and  
on pockets: 90% polyester,  
10% elastane  
Item no.: 2250632  
€ 99,95

**CRAFT RIDE shorts**  
Material: 94% polyamide, 6% elastane,  
pockets: 100% polyester  
Item no.: 2250628  
€ 79,95

**ROECKL OTTAWA gloves**  
Material: back of the hand: 70% polyamide,  
18% polyester, 12% elastane, palm:  
100% polyamide  
Item no.: 2252896  
€ 34,95

**FALKE TK2 COOL socks**  
Material: 36% polypropylene,  
33% lyocell, 15% polyamide,  
15% polyester,  
1% elastane  
Item no.: 2225889  
€ 17,95

**CHROME TRUK PRO shoes**  
Item no.: 2189286  
€ 119,95

**CHROME CITIZEN messenger bag**  
Item no.: 2189198  
€ 179,95





**ROSE C-SHOT helmet**  
Item no.: 2206510  
€ 79,95

**ROSE RETRO 1907 cap**  
Material: 100 % cotton  
Item no.: 2257895  
€ 5,95

**NORTHWAVE TOUR PRO glasses set**  
Item no.: 2081726  
€ 54,95

**ROSE RETRO 1907 jersey**  
Main fabric: 100% polyester, inserts:  
78% polyester, 22% elastane  
Item no.: 2250282  
€ 64,95

**ROSE RETRO 1907 bib shorts**  
Material: 80% polyamide,  
20% elastane, seat pad:  
100% polyester  
Item no.: 2250291  
€ 74,95

**ROSE RSH GEL 05 gloves**  
Material: 40% polyurethane,  
34% polyester,  
20% polyamide, 6% elastane  
Item no.: 2096205  
€ 18,95

**ROSE COLOURFEET socks**  
Material: 50% polyester,  
48% polyamide, 2% elastane  
Item no.: 1914001  
€ 6,95

**ROSE RRS CARBON COMPOSITE road shoes**  
Item no.: 2224400  
€ 149,95

**ROSE BLOCK socks**  
Material: 58% polyamide,  
40% polypropylene, 2% elastane  
Item no.: 2196994  
€ 7,95

**ROSE RRS 11 road shoes**  
Item no.: 2149738  
€ 89,95



**ROSE PACER II helmet**  
Item no.: 1980882  
€ 64,95

**ROSE PS 08 Photochromic glasses**  
Item no.: 2240790  
€ 59,95

**ROSE PRO FIBRE women's wind vest**  
Material: 100% polyester  
Item no.: 1867943  
€ 34,95

**ROSE RACE CYW women's jersey**  
Material: 100 % polyester  
Item no.: 2151706  
€ 44,95

**ROSE CYW women's cycling shorts**  
Material: 80% polyamide, 20% elastane,  
Seat pad: 100% polyester  
Item no.: 2160333  
€ 44,95

**ROSE LADY LINE CYW GEL gloves**  
Material: 50% polyurethane, 25% polyamide,  
20% elastane, 5% polyester  
Item no.: 2168496  
€ 16,95

**MET MANTA HES helmet**  
Item no.: 2254861  
€ 199,95

**RUDY PROJECT AGON glasses**  
Item no.: 2086828  
€ 229,95

**CASTELLI CLIMBER'S women's jersey**  
Material: 93% polyester,  
7% elastane,  
Cuffs: 81% polyester,  
19% elastane  
Item no.: 2251442  
€ 79,95

**CASTELLI VELOCISSIMA women's bib shorts**  
Material: 71% polyamide,  
29% elastane,  
Mesh: 78% polyester, 22% elastane,  
Inserts: 80% polyamide, 20% elastane,  
Leg grippers: 53% elastane,  
47% polyester  
Item no.: 2083627  
€ 99,95

**GORE BIKE WEAR ELEMENT gloves**  
Material: back of the hand:  
82% polyamide, 18% elastane,  
Palm: 60% polyamide, 40% polyurethane  
Terry: 100% polyester  
Item no.: 2167211  
€ 37,95

**CASTELLI ROSSO CORSA 6 socks**  
Material: 85% polyamide,  
15% elastane  
Item no.: 2082840  
€ 14,95

**MAVIC AKSIUM III road shoes**  
Item no.: 2252123  
€ 89,00

**GIRO SYNTHÉ helmet**  
Item no.: 2174372  
€ 259,95

**NORTHWAVE SWITCH cap**  
Material: 65% polyester,  
35% cotton  
Item no.: 2252510  
€ 15,95

**OAKLEY RADAR EV Path glasses**  
Item no.: 2215174  
€ 134,00

**NORTHWAVE PALM BEACH jersey**  
Material: 80% polyester,  
20% elastane  
Item no.: 2252562  
€ 64,95

**NORTHWAVE LOGO 3 bib shorts**  
Material: 80% polyester,  
20% elastane  
Item no.: 2252569  
€ 69,95

**NORTHWAVE SWITCH LINE gloves**  
Material: back of the hand:  
100% polyester, palm:  
55% polyester, 45% polyurethane  
Item no.: 2252512  
€ 24,95

**NORTHWAVE SWITCH LINE socks**  
Material: 60% polypropylene,  
20% polyamide, 20% elastane  
Item no.: 2252489  
€ 13,95

**NORTHWAVE EVOLUTION PLUS road shoes**  
Item no.: 2252392  
€ 199,95



# CUSTOM-MADE

## XEON CDX CROSS-4400 GRAVEL 1X11

AUTHOR THORSTEN HECKRATH-ROSE PICTURES ROSE



CUSTOM-MADE — MADE TO THE CUSTOMER'S SPECIFICATIONS. BECAUSE A BIKE SHOULD FIT LIKE A GLOVE, ONLY THEN IT CAN SHOW ITS STRENGTHS. WITH THE CONFIGURATOR, ROSE OFFERS THE IDEAL BASIS TO CREATE YOUR INDIVIDUAL BIKE. WE PRESENT ESPECIALLY INTERESTING, EXTRAVAGANT OR INDIVIDUAL CUSTOM-MADE BIKES — AS INSPIRATION AND MOTIVATION FOR YOUR BIKE PURCHASE!

**Who?** My name is Thorsten Heckrath-Rose, I live in Bocholt and I run the company ROSE Bikes GmbH together with my wife Stefanie and my father-in-law Erwin Rose. Since 1995, I have been using my bikes for sport, yet I am also connected to all kinds of bicycles apart from that. At home, we only have one car that I use to do the weekly shopping or for longer distances. Apart from that, I go everywhere by bike. That is also why you can find bikes for almost every occasion in my garage. I do most of my kilometres on my way to work and back home. In addition, I like to ride tours (on- and off-road) to stay fit and relax. With some colleagues, I regularly ride in the evening after work and I also like to take part in local events like the RTF bike tour of RC77 or the Muko Bike Tour. For the summer, we are planning to take part in the 24h race in Duisburg with several ROSE teams.

**What?** The basis of Thorsten's custom-made project is the XEON CDX CROSS-4400 Gravel 1x11, an off-road racer and all-rounder of a very special kind. Made for gravel roads and rough tracks, the crosser impresses with a high-end carbon frame with a modern tube design, a lightweight carbon fork and disc brakes. It's a bike that covers a wide range of uses, ranging from everyday commutes through to competitions.

**Why this bike?** What I find particularly appealing about the XEON CDX CROSS is its versatility. I wanted to have a bike for universal use. This crosser allows me as a commuter to quickly ride through the city and to also use rat runs. Besides, it gives me the flexibility to spontaneously prolong my way back home by integrating a training session. The XEON CDX CROSS is simply perfect for the terrain here around Bocholt and the neighbour-

ing Netherlands with a lot of easy forest paths and unpaved side roads. In summer, when the weather is dry, the sand can be very deep and in autumn, it can also get muddy. The XEON CDX CROSS will do it all. For me, biting disc brakes with great braking power modulation are extremely important, too, as I set a high value on high braking power in any weather. Besides, I've got the perfect tyres with the Schwalbe G-One that offer grip off-road, roll fast on the road and offer high safety in wet conditions. As a 1x fan I opted for the SRAM Force 1x11, of course. The combination of a clean look thanks to a single chainring, a wide gear ratio and high simplicity thanks to the absence of a front derailleur really impresses me. The XEON CDX CROSS is the most versatile bike I have in my garage, which is why it is also by far the most frequently used.

Small but important: a bell within easy reach



A splash of colour matching the frame design.



**How did you customize the XEON CDX CROSS to suit your requirements?** I have further upgraded the already high-quality equipment of the XEON CDX CROSS-4400 Gravel 1x11 with a few special parts and thus tuned it to be even more universal. With the use of SKS mudguards and a Tubus rack, I have made the XEON CDX CROSS suitable for use in the city, which is perfect for my way to work. Besides, the parts are extremely lightweight and slim and can be removed quickly if need be.



It just couldn't be a better all-rounder: XEON CDX CROSS

I usually ride all my bikes with SPD or Look clipless pedal systems. For the cross bike, I chose the Xtreme Duo X pedals that come with a platform on the one and with a click system on the other side. The perfect combination for me.

The Spacerbell is one of my favourite parts. It is so simple, yet clever and useful. It is perfectly integrated and helps me to catch other road users' attention before rushing past...

I primarily opted for the green handlebar tape by fi'zi:k because of its look. It perfectly matches the colour of the frame and is a real eye-catcher. Moreover, it offers high comfort and grip. The Ritchey Evo

Curve drop bar offers a great combination of stiffness and many different, easy-to-reach positions. As I am a rider who tends to change the hand position quite often, this is especially important to me.

**Have you achieved your custom-made goal?** My custom bike leaves nothing to be desired and even is as versatile as I have imagined. I have also equipped the bike with battery-powered lights. When riding off the roads, I use the Supernova

Airstream in front, as it literally turns night into day. The XEON CDX CROSS is simply fun. It rides like a road bike, is almost as lightweight as a thoroughbred racer and comes with a sporty geometry.

The ROSE carbon wheels provide great acceleration. In addition, the bike has great off-road characteristics thanks to the use of disc brakes and wide gravel tyres. It just couldn't be a better all-rounder! ■



For the cross bike, I chose the Xtreme Duo X pedals – the perfect choice for daily commutes and sport. Every time I ride a longer tour, I use my MTB pedals though.

- Tubus Fly rack
- SKS CAB B 45 T28" mudguard set
- Xtreme Duo X pedals
- ROSE Spacerbell
- fi'zi:k handlebar tape green
- Ritchey Evo Curve blatte drop bar

# Saddle discomfort? Switch saddles now!

Terry saddles are proven to effectively stop seating discomfort. The saddles are available in two widths and are specifically developed and designed for both male and female anatomies. The step-free 3-Zone-Comfort-Principle saddle surface with the ergonomic relief channel is proven effective against seating discomfort while riding.

Sport Series  
Butterfly/Fly  
Exera starting at  
**59,95 €**  
MSRP



Available for Men or Women



### Ergonomically and Medically Approved.

Terry saddles are developed using the latest sensor pressure measuring technologies in collaboration with our expert team consisting of Dr. med. Uwe Niekerken (Urologist), Hedda zu Putlitz (Physiotherapist) and Dr. Kim Tofaute (Sports Scientist and Ergonomist) in our Terry ergonomic laboratory.



Saddle shown: Butterfly Exera Gel Woman, Item no.: 2256160, 79,95 € – other models available: [www.rosebikes.com/terry](http://www.rosebikes.com/terry)

# ROSE TOP CYW JERSEY AND BIB SHORTS

OUR TOP PRODUCT IS A SPECIAL RECOMMENDATION THAT MAKES LIFE WITH YOUR BIKE EASIER, MORE CONVENIENT AND MORE BEAUTIFUL. WHETHER IT'S A BIKE COMPONENT, A PIECE OF CLOTHING OR AN ACCESSORY – THESE ARE VERY SPECIAL TIPS FOR BETTER BIKING!



**ROSE TOP CYW  
SHORT-SLEEVED  
JERSEY**  
€ 69,95  
Item no.: 2201083

**ROSE TOP CYW  
BIB SHORTS**  
€ 79,95  
Item no.: 2201065

**C**atch a glimpse of spring: The ROSE TOP CYW outfit makes your racer's heart beat faster, full of anticipation for the warm season. The jersey is made from elastic, robust material with mesh sleeves. A full-length front zip with garage leads from a small stand-up collar down to the bottom. The longer back panel features three back pockets and one small zip pocket at the side. A silicone gripper on the bottom hem prevents the jersey from riding up. Reflective elements at the back sparkle like little tiger eyes.

These are the only ones that can keep up with this jersey: the matching bib shorts. They are made from a highly technical material mix and their mesh straps, just as their rubberised leg grippers and their LUCKY seat pad provide outstanding wearing comfort. The seamless seat pad is made from elastic microfibre and features two different densities. Thanks to high-quality foam, it perfectly absorbs vibrations of the saddles and road unevenness. Bring it on, summer!

**Jersey** Material: 100% polyester; mesh: 80% polyester, 20% elastane  
**Bib shorts** Material: 80% polyamide, 20% elastane; inserts: 80% polyester, 20% elastane

ONLINE RATINGS // ROSE TOP CYW bib shorts // total ratings: 5 out of 5 stars

★★★★★

by master-roy (written on 20.09.2016)

I am 1,83 metres tall and I weigh 75 kg. The shorts fit well in size L, but XL would probably be a little better because of the straps. Apart from that, they are very comfortable to wear and well made. Very good leg grippers, too, and an excellent seat pad. I have just done two rides of about 80 km so far, yet I think the comfort will also still be guaranteed after more than 100 km. Will surely make it this autumn. What I personally like is the design and I love to advertise Rose. You will hardly find better shorts at this price...

★★★★★

by Sven Feigl (written on 21.05.2016)

Great shorts, great pad. Top!

★★★★★

by Jaakko Toppari (written on 27.06.2016)

Very good. I have had assos shorts, these are just as good, but cheaper.

ONLINE RATINGS // ROSE TOP CYW short-sleeved jersey // total ratings: 5 out of 5 stars

★★★★★

by Uwe Beyer (written on 18.08.2016)

Very comfortable to wear. Super fit and looks great, too.

★★★★★

by Jaakko Toppari (written on 27.06.2016)

Very good

★★★★★

by Anton Stifter (written on 09.01.2017)

Great

Customers have their say: Here you will find impressions, reviews and first-hand experiences with our products. Seen at [www.rosebikes.com](http://www.rosebikes.com). Reading and participating expressly welcome!

# TORTURE YOURSELF, YOU BASTARD!

**THE VOSGES –  
WITHIN REACH**

AUTHOR PAUL WELLER

PICTURES CHRISTOPH LAUE

IS THIS SENTENCE UDO BÖLTS SCREAMED AT HIS TEAM CAPTAIN JAN ULLRICH IN THE VOSGES ON THE 18TH STAGE OF THE TOUR DE FRANCE IN 1997 THE MOST FAMOUS SENTENCE IN THE HISTORY OF CYCLE RACING? I DON'T KNOW, BUT IT IMMEDIATELY COMES TO MY MIND WHEN THE CLIMB IS GETTING EVEN TOUGHER. THE VOSGES ARE SO CLOSE YET SO DEMANDING. A FIRST-CLASS BIKE REGION AND THE PERFECT PLACE TO RUSH SOME BRAND-NEW ROSE ROAD BIKES OVER THE ASPHALT.



**For road cyclists, the climbs are not long, but tough and definitely more suitable for sporty riders than for newcomers."**

swirl around grey house facades in the lowlands. It is the largest single expanse of woodland France has to offer. As the mountains are partially so steep that no forestry machinery can go there, the original character of the forests has been retained. For road cyclists, the climbs are not long, but tough and definitely more suitable for sporty riders than for newcomers.

I have a date with Rebecca and Maria, two passionate road cyclists and true climb specialists, and we agreed to meet here on this small hill. While I am seeing the stork flying away, the two approach at breakneck speed. "Salut!" they shout when stopping close in front of me and laughing. "Okay," I think, "let's do it."

For our tour, we could choose from ROSE's huge fleet of vehicles: Rebecca rides a PRO CGF, Maria a PRO SL in the ladies' version and I'm sitting on an X-LITE CDX. We follow the road, as we want to go to the Col de la Schlucht. The 1139 m high pass is an important road axis between

the Alsace and Lorraine region and has already been the scene of exciting Tour de France skirmishes several times. It probably is the most famous pass of the Vosges – and one of the toughest, at least for cyclists. Despite the steep slope, I sit comfortably on my X-LITE CDX. The geometry is especially designed for long distances, efficient and energy-saving, because when sitting comfortably, you won't suffer from fatigue for quite some time.

The bike is a real eye-catcher and comes with a high-quality carbon frame that is extremely lightweight, extremely stiff and extremely robust. 30 mm wide tyres effectively absorb bumps. Microvibrations cannot get through to my body.

Rebecca's PRO CGF also comes with a long-distance geometry made for gran fondo, the popular endurance ride. In spite of excellent marathon genes, the GF series is extremely sporty. Rebecca presses hard on the climb so that we ride up the mountain at relatively high speed.

Is this sentence Udo Bölts screamed at his team captain Jan Ullrich in the Vosges on the 18th stage of the Tour de France in 1997 the most famous sentence in the history of cycle racing? I don't know, but it immediately comes to my mind when the climb is getting even tougher. My name is Anatol Sostmann, I am marketing and PR manager at ROSE Bikes and I have been coming here regularly for more than 10 years now. The

Vosges are so close yet so demanding. A first-class bike region and the perfect place to rush some brand-new ROSE road bikes over the asphalt.

I have never experienced this before: Just when I stop at the agreed meeting point, a stork is landing only a few metres away from me on a meadow. We look each other into the eyes. After it has laboriously taken a few steps through the high grass, it

stretches its enormous wings and raises into the air again. The Vosges are only a stone's throw away from the German border and yet you can already feel the French way of life here.

When riding through the little, sleepy villages in Alsace, it seems as if time has stood still for a while. There are hardly any cars on the narrow roads, cows graze on countless willows with boredom, wafts of mist



Keeping the eyes on the road.



There are only few even roads in the Vosges, they mostly lead up- and downhill.



Maria eats miles!



**Riding on the road is quite relaxed here, the French car drivers are patient."**

We finally arrive on top, where we can catch a great panoramic view of endless forests when glimpsing through the trees. We close our jerseys and enter the downhill section. This is where the special strength of my X-LITE CDX comes into effect: The bike comes with hydraulic disc brakes. I have to admit that I need some time to get familiar with this system on a road bike even though I perfectly know the handling of disc brakes on mountain bikes. Compared to a rim brake, the hand forces are significantly lower and the brake must be controlled even more sensitively. Once you have gotten used to it though, you will enjoy a completely new feeling of safety. You can decelerate later and more precisely; the advantages primarily show in wet conditions and on long downhill sections. The two fast ladies now struggle to stay at

my rear wheel, but once we arrive at the bottom, we continue our ride together.

Like a mirror image the Vosges lie opposite the Black Forest. Colmar on the French and Freiburg im Breisgau on the German side are only 50 km away from each other. Colmar and Strasbourg are the perfect destinations for day-trippers. In between, there is a lot to see for those interested in history, as many fortresses and castle ruins line the Rhine river.

We continue towards the Route des Crêtes and tackle the next climb. Riding on the road is quite relaxed here, the French car drivers are patient, they greet and do not tailgate, it's a nice coexistence. So, we have some time to take a closer look at Maria's PRO SL LADIES. She is the only one riding a model made from

aluminium, the material that currently experiences a little renaissance. Many people appreciate the special riding quality and high suitability for daily use this material offers. Moreover, her PRO SL is especially adapted to the female anatomy. Equipped with a smaller handlebar, a specially shaped and padded women's saddle and an adapted crankset, it is thought-out down to the last detail. Besides, it impresses with very sporty all-round qualities. It simply is the perfect vehicle for a region as versatile and challenging as the Vosges. The stylish frame sparkles blue in the sun, invisible weld seams and internally routed cables give the bike an elegant look.

The Route des Crêtes winds its way along the main ridge of the southern Vosges at a height of around 1100 to 1200 metres.





A sensation made of carbon: the X-LITE TEAM

# FC SYSTEM



## FC 35 & 25 HYDRATION SYSTEM

- No-plash refill port
- Swap straw with gap cap to place straw in the front or rear of bottle
- Reverse mount for lower profile
- Fits on aerobars at its narrowest

FC 25 - 739ml (89,99€) *without decoration* | ord. no.: 2254098

FC 35 - 1035ml (99,95€) *without decoration* | ord. no.: 2254104

POWERED BY WORLD CHAMPIONS



### AERODRINK BRACKET ADAPTER

Compatibility: FC25, FC35, AeroHC, Standard Bottle, Aerodrink, Aqualite

29,99€ | ord. no.: 2251548



### FC25 BOTTLE KIT

Compatible with the bracket for Aerodrink or Aqualite hydration systems

39,99€ | ord. no.: 2254101

[rosebikes.de/profiledesign](http://rosebikes.de/profiledesign)



**Yet we soon enter the downhill section, at least we still have to go to Metzeral where we have booked a room."**

It is 75 kilometres long in total and leads from the Col du Bonhomme in the north via the Col de la Schlucht, Hohneck, Markstein, Grand Ballon and Cernay through to Thann in the south.

It is one of France's most impressive mountain roads and a popular getaway route. There is slightly more traffic here, especially motorcyclists like to ride the high-lying panorama route. Yet for road cyclists, too, this road is an absolute must see. We happily eat miles, enjoy the sun and soon start to get hungry.

And so we stop off at one of the many mountain farmers' hotels to enjoy the

traditional milker's meal. We are served vegetable soup, meat pie (Tourte) with "Roigabrageldi" (thinly-sliced fried potatoes) and alpine cheese. After that, we get a blueberry tart for dessert. Our meal does not have much in common with the former meal for cowherds, yet it is definitely a culinary highlight.

We hop on our saddles again. This time it's more relaxed to break in. Yet we soon enter the downhill section, at least we still have to go to Metzeral where we have booked a room. The day slowly draws to a close, I say goodbye to Rebecca and Maria – tomorrow, we will do the Col du Platzerwasel, a nice horn with an altitude of 1182 metres.

It's not only because of the proximity to Germany and the interesting topography that the Vosges are a hotspot for road cyclists. Way of life, culture and nature are so original and lovely you can hardly escape their charm. Yet an appropriate level of fitness or a private domestique that will shout you up the mountain is required – otherwise, the Vosges mountains will soon show you who is the real team captain. However, the reward is quite big. Winding roads, great views and fast downhill rides are really tempting. And with a bit of luck, you will even see a stork flying around! ■



The reward after the uphill section: a winding descent

## FOR YOUR NEXT RIDE



€ 89,95  
Item no.: 2181798

**SELLE ITALIA MAX SLR GEL FLOW SADDLE**  
It fits! With a self-moulding padding and an extra-large cut-out, the Max SLR Gel Flow saddle provides relief for the perineal area, as well as highest comfort. Weight: approx. 250 g.

### DT SWISS PR1400 DICUT OXIC ROAD WHEELS

The wheel reinvented. The DT SWISS PR1400 DICUT OXIC road wheels impress with a ceramic OXiC surface coating for best braking performance. A weight of only 1435 g ensures excellent acceleration values.

€ 999,00  
Item no.: 2252867



€ 149,99  
Item no.: 2253545

### GIRO CINDER MIPS BIKE HELMET

Remain guarded! The GIRO CINDER covers your head with MIPS: This system additionally protects you from rotational forces. 26 vents and breathable AIR FX pads inside provide pleasant temperatures underneath the cap.

### ROSE BLACK HIGH END JERSEY + BIB SHORTS

The little black dress. Breathable INTERLOCK fabric, stand-up collar, seamless cuffs with silicone print, anti-slip silicone bottom hem, mesh straps, Lucky seat pad, elastic leg grippers, flat seams. Any questions?  
Main fabric jersey: 100% polyester; sleeves + side panels: 86% polyester, 14% elastane. Main fabric bib shorts: 80% polyamide, 20% elastane; straps: 80% polyamide, 20% elastane.

### DEXTRO ENERGY LIQUID GEL

It is all a question of good taste. The short-chain carbohydrate concentrate by Dextro Energy is now also available with grapefruit flavour. Thanks to a liquid form, it's not necessary to drink immediately afterwards. Lactose-free. 1x 60ml gel.

€ 1,60 (basic price 1 l € 26,67)  
Item no.: 2256424



€ 79,95 Jersey  
€ 94,95 Bib shorts  
Item no.: 2251131 + 2251132

# LADIES ONLY!

## DISCOVER THE NEW ROSE LADIES WORLD



Sketches are discussed.

**IN CYCLE RACING, WOMEN HAVE LARGELY BEEN UNNOTICED AS A TARGET GROUP FOR MANY YEARS. IN EVERY NOOK AND CRANNY, WOMEN'S SPECIFIC BIKES, CLOTHES AND ACCESSORIES ARE STILL LACKING – EVEN THOUGH MORE AND MORE WOMEN HOP ON THEIR BIKE. A "ROSE BIKES LADY CYCLING" TEAM SET UP EXPRESSLY FOR THIS PURPOSE HAS TAKEN UP THIS CHALLENGE SINCE LAST YEAR.**

**R**OSE simply fits women – "ROSE fits me". True to this motto, a lot has happened at the bike expert since last year to design a completely new ROSE ladies' world. Eleven ROSE Bikes ladies – and three brave men – have been working on broadening and optimizing the product range for women ever since. For products that are even

better adapted to the female anatomy and the requirements of women. The motto "ROSE fits me" already sets the target: womenswear that leaves nothing to be desired. 110 years of experience as a bike expert make it possible. Ranging from summer cycling gloves through to ladies' road bikes – everything that is designed by our "Lady Cycling" team is

tested on performance and discussed until it meets the requirements of all group members who are real bike enthusiasts themselves. From the idea to the finished product – here, everything is brought together to create the best possible ROSE ladies' world. Our ROSE Bikes ladies know from their own experience what women need for cycling.

A range from women for women. A road bike and matching racing clothes pave the way for a completely new ROSE ladies' world. Top of the class is our new PRO SL LADIES racer that is perfectly adapted to the female anatomy, primarily thanks to a shorter seat tube, a lower seat stay and a specific women's saddle. The STI levers allow for individual lever reach adjustment and the stem, too, can be precisely adjusted. A full carbon fork

# CATCH ME IF YOU CAN™

provides high comfort at an unbeatable value for money. The brand-new, highly technical collection with the eye-catching slogan "Catch me if you can" on the back panel is matched to the colour of the bike and will whet your appetite for racing, as it shows what women want: to be right at the front. The perfectly fitting cycling clothes with comfortable features and a trendy design are real eye-catchers your



Ride to the top with the PRO SL LADIES.

The PRO SL LADIES



opponents will remember for a long time. ROSE Bikes will also have a lot up its sleeves for female bike enthusiasts in future. A striking 2017 mountain bike collection for all off-road adventurers, exciting ladies-only events with bicycle technology workshops, a lady community to talk about everything to do with bikes and even more women's specific bikes of every type are planned. ■



**OUR ROSE BIKES LADIES KNOW FROM THEIR OWN EXPERIENCE WHAT WOMEN NEED FOR CYCLING. A RANGE FROM WOMEN FOR WOMEN."**

# ON THE SHOPPING LIST LADIES ONLY!

ALL THAT WOMEN NEED: THESE PRODUCT HIGHLIGHTS WILL TURN YOUR NEXT RIDE WITH YOUR ROAD BIKE INTO A GREAT EXPERIENCE.

## GARMIN VIVOSMART HR+ FITNESS TRACKER\*

A personal coach, a perfect training partner or a little advisor – with versatile smart features, GPS and an integrated **heart rate monitor** you will wear your coaching staff around your wrist in future. Stay active – in the gym or outdoors. Thanks to **GPS support**, the activity tracker automatically tracks and saves distance, time and pace, while even differing between indoor and outdoor activities.



€ 178,95  
Item no.: 2251616 (blue)



€ 12,95  
Item no.: 2254028

## AQUA SPHERE HAWAII BATHING SLIPPERS

After a tour, cyclists mostly like to get out of their cycling shoes and into their sandals. What a wonderful feeling! To make sure it will remain wonderful, we strongly recommend you the Aqua Sphere Hawaii bathing shoes. A **soft fabric** inside offers high comfort and a **textured Super-Grip** sole ensures slip resistance – whether in the shower, sauna or swimming pool. *Material: EVA.*

## TERRY BUTTERFLY EXERA MAX WOMEN'S SADDLE

The female body is very special. The designers of Terry know this, too. That is why they have developed the Butterfly Exera Max saddle for women. It is especially adapted to the **female anatomy** and offers **highest comfort** for on the bike thanks to a 3-zone comfort padding, micro air chambers and comfort foam.



€ 59,95  
Item no.: 2256158



€ 109,00  
Item no.: 2107130

## KASK MOJITO ROAD HELMET

"Hey, Harald!" "Yep?" "Am I already wearing my helmet?" "Yes, you are!". With the KASK MOJITO helmet, you may experience situations like this or similar. This lightweight (**weight approx. 220 g**) offers high-level protection for your think tank. Besides, it features INMOULD technology, an MIT polycarbonate shell and an UP&DOWN adjustment system. Available in eight cool colour combinations.

## ROSE CHASE WOMEN'S JERSEY "CATCH ME IF YOU CAN"

Up and away with the "Catch me if you can"! **Mesh inserts** under the arms, a full-length front zip, seamless cuffs with silicone prints and a **breathable fabric** are not only perfect for chasing though! *Material: 100% polyester; mesh: 86% polyester, 14% elastane.*



€ 79,95  
Item no.: 2250391



€ 84,95  
Item no.: 2251460

## ROSE CHASE BIB SHORTS "CATCH ME IF YOU CAN"

Like the jersey of the same name, the CHASE bib shorts for women impress with high-quality materials and **excellent comfort**. Flat seams ensure a perfect fit and a LUCKY LADY seat pad provides **perfect comfort** on the bike. *Material: 80% polyamide, 20% elastane.*

## NORTHWAVE VERVE SRS WOMEN'S ROAD SHOES

The VERVE SRS by NORTHWAVE are a no men zone. Because these high-end road shoes impress with a **women's specific fit** and thus with highest comfort for the wearer. In addition, they come with an extra-hard **NRG AIR carbon sole**. Weight: approx. 256 g (per shoe, size 38).



€ 119,95  
Item no.: 2252445

NEW IN 2017!

# THE PRO SL DISC

## HIGH TECHNOLOGY AT A LOW PRICE

THE FIRST STEP IS ALWAYS THE MOST EXPENSIVE? IT DOES NOT HAVE TO BE LIKE THAT! THE PRO SL LINE ONCE AGAIN PROVES THAT EXCELLENT QUALITY AND ATTRACTIVE SPECS DO NOT HAVE TO BE EXPENSIVE. THE MARATHON MACHINES OF THE MEDIUM-PRICE RANGE ARE NOW EVEN AVAILABLE WITH BITING DISC BRAKES: THE PRO SL DISC IS THE CONSISTENT FURTHER DEVELOPMENT OF ROSE'S PRODUCT RANGE AND OFFERS NEWCOMERS EVEN MORE BRAKING POWER.



Red-hot design with innovative braking power.

# MARATHON RACER

There clearly is a trend towards disc brakes in cycle racing. Thanks to a higher surface pressure, the braking power of disc brakes is significantly higher compared to rim brakes – even in wet conditions. This aspect provides increased safety and we also want to offer our customers this added value in the entry-level range. No matter if you want to ride a gran fondo or go on a weekend tour with your friends. Thanks to a high-quality frame and first-class components, the PRO SL Disc can do it all and thus offers every cyclist the possibility to benefit from the advantages of a disc brake,” explains Petra Hügging, head of road bike product management at ROSE Bikes. Apart from their great braking power, road bikes with disc brakes also impress with high durability: The bikes’ rims suffer less, as only the pads and discs will wear out over time. Moreover, rims are protected from overheating when riding long descents in mountainous regions where you have to brake often.

Just like all frames of the PRO SL family, the aluminium frame of the PRO SL DISC, too, is handmade and equipped with triple-butted tubes – for excellent stability and even pressure distribution. Like a pro bike, this bike comes with a highly functional Ritchey stem and an elegant Ritchey Stream handlebar, as well as with a top full carbon fork with 12mm thru axle and FlatMount disc. The full carbon fork combines high lateral stiffness with good comfort and a low weight. Depending on the specific model, the bike even features a complete Shimano Ultegra groupset you usually only find on higher-priced bicycles.

One thing is for sure: When riding the PRO SL DISC, newcomers will feel like a champ and enjoy cycling during training and races.

“The PRO SL DISC not only rides fast on the road, but it will also be delivered to our customers quickly. This is thanks to the fact that the bike is available as a BIKE NOW! model in our web shop. This means that the road bike has already been preconfigured by our experts with best components and that it does not have to be built from scratch. This saves time, as the colleagues working in the logistics centre can directly pack the bike into the box and thus prepare it for shipping,” Petra explains. In this way, riding pleasure won’t be long in coming.■

**PRO SL DISC – an all-rounder with a high level of safety!**

For more information on the bike see [rosebikes.com](http://rosebikes.com).



- 1. For high performances:** 4-axis stem and Stream handlebar by Ritchey
- 2. Carbon look** thanks to smooth lines at the junctions and smooth weld seams.
- 3. Full carbon fork** with 12 mm thru axle and hydraulic FlatMount Disc for excellent braking performance.
- 4. The FlatMount standard** allows for a seamless integration of the disc.

# ON THE SHOPPING LIST

## TRIATHLON SHOPPING MALL

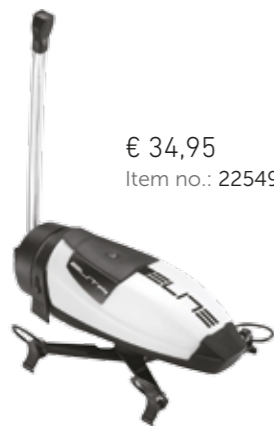
THE PERFECT EQUIPMENT PLAYS A DECISIVE ROLE IN TRIATHLON. WE'LL SHOW YOU PRODUCTS THAT WILL SAVE TIME IN THE TRANSITION ZONE AND HELP YOU GET FASTER TO THE FINISH.

### HIDEMYBELL 2.0 HANDLEBAR MOUNT

Hark how the bells... You think that a bell is disturbing to the eyes and a waste of handlebar space? No problem, the HideMyBell 2.0 **disguises itself as a handlebar mount** for your navigation device or bike computer. Almost invisible, extremely useful and **easy to access**. You will get additional safety for free. Available for Garmin, Polar or Wahoo Element.



€ 34,95  
Item no.: 2256188



€ 34,95  
Item no.: 2254935

### ELITE BUTA HYDRATION SYSTEM

Drink effortlessly – no problem with the Elite Buta hydration system. Its **aerodynamic shape** perfectly adapts to your aero bike, while keeping you aerodynamic and well hydrated. The drink bottle has a volume of 750 ml, is BPA-free and food-safe. Designed for personal best times and compatible with **aero bars** with a distance of 70 to 180 mm between the extensions.

### PROFILE T1 PLUS AERO BAR

The Profile T1 Plus helps you get into a stretched position in your battle against time! And in a comfortable way, as the ski bend extensions help you **relieve your wrists and tendons**. Besides, the double-bend shape provides an additional grip position in the centre of the bar. Top: The aero bar is also ready for **internal cable routing** of Shimano Di2 cables and housings. Also available in elegant carbon.



from € 89,95  
Item no.: 2254141

### ROTOR INPOWER 3D+ COMPACT CRANK POWER METER

For watt? The Rotor INpower 3D+ compact power meter represents the perfect entry and advancement for your **watt-based training**. Accurate, light, reliable – besides, the technology is housed inside the axle to **protect it from shocks and water**. A very elegant solution to better analyse and understand your training and thus to improve your performance.



€ 799,95  
Item no.: 2188676

### TOPEAK TRI-BACKUP PRO V BOTTLE CAGE

A second saver. On the hunt for best times, little details can be decisive. This is what Topeak has designed the Tri-Backup Pro V bottle cage for. It allows you to fix **up to two drinks bottles** behind the saddle – ready at hand, aerodynamically efficient. The installation is a child's play and the inclination can be **easily adjusted**, too.



€ 49,95  
Item no.: 2256166

### FI'ZI:K MISTICA K:IUM SADDLE

It's all about performance... and comfort! And these are exactly the two aspects the fi'zi:k Mistica k:iium saddle perfectly combines. The **ergonomic** saddle shell is made from carbon fibre reinforced nylon; a **shorter saddle nose** especially helps you achieve new best times, especially when riding in a stretched position in a triathlon or time trial.



€ 149,95  
Item no.: 2256183



### RUDY PROJECT BOOST 01 ROAD HELMET

A first-class head needs a first-class helmet. And so, the BOOST 01 by RUDY PROJECT not only offers **maximum ventilation**, but also high safety and best aerodynamics for your think tank. Ten large vents and internal ventilation channels provide a perfect climate.

€ 219,95  
Item no.: 2175292



### UVEX VARIOTRONIC S GLASSES

The VARIOTRONIC S measure changeable light conditions with an integrated sensor and automatically **tint the lenses** within 0.1 seconds, if need be. If this is too technical for you, you can decide for yourself whether you want the glasses to darken **automatically** or whether you prefer to change the lens tinting **with a touch of a button**. A gadget 007 would have wished to get from Q.

€ 279,95  
Item no.: 2164409

### Gore BIKE WEAR PHANTOM PLUS ZIP-OFF-JACKET

A universal weapon for your torso: **windproof, water-repellent and breathable**. The PHANTOM PLUS GWS zip-off jacket offers protection in bad weather and **thanks to zip-off sleeves and short jersey sleeves underneath**, it also gives you the possibility to react to a visit of the sun. *Material: 100% polyester. GORE WINDSTOPPER: 100% ePTFE (expanded polytetrafluoroethylene); stretch: 85% polyamide, 15% elastane.*



€ 189,95  
Item no.: 2252224

### ALÉ FORMULA 1.0 ULTIMATE JERSEY

You are cutting a fine figure on the bike? Then you are probably already wearing the Formula 1.0 Ultimate jersey! **Classic, elegant, sexy!** This is not enough for you? You will get a breathable RIPEX fabric, a close-fitting collar and a **full-length front zip on top**. *Material: 100% polyester; collar and sleeves: 88% polyester, 12% elastane; lower sleeves and cuffs: 81% polyester, 19% elastane.*



€ 94,95  
Item no.: 2252639



### CRAFT VERVE GLOW BIB SHORTS

The CRAFT VERVE GLOW BIB SHORTS are simply perfect for cycling on warm days. Thanks to the **innovative COLDBLACK technology** inside the breathable and light compression fabric, the shorts heat up less in sunlight. Moreover, they come with complex BODY MAPPING mesh straps for **improved ventilation**. Available in additional colours. *Material: 78% polyamide, 22% elastane; Straps: 95% polyester, 5% elastane.*

€ 139,95  
Item no.: 2250593 (orange)



### ROECKL IZU CYCLING GLOVES

Elegant hand covering for fashion-conscious cyclists. The IZU is a good choice especially for the warmer season. A **shock-absorbing XRD padding** and a very lightweight and **breathable micro mesh fabric** ensure highest comfort for the hands. *Material: back of the hand: 68% polyamide, 17% polyester, 15% elastane; Palm: 100% polyester.*

€ 34,95  
Item no.: 2252937

### GAERNE CARBON G STILO+ ROAD SHOES

Lay your feet on carbon – or to be more precise: into the CARBON G STILO+ road shoes by GAERNE. These **breathable** cycling shoes are lightweight and equipped with an extremely stiff EPS LIGHT WEIGHT FULL CARBON outsole. Thanks to a DUAL FITTING CLOSURE SYSTEM with two **BOA IP-1** Speed Lacing reels, the shoes are adjusted **quickly and precisely**.



€ 359,95  
Item no.: 2252501 (white)

### X SOCKS BIKING SILVER SOCKS

The BIKING SILVER by X SOCKS are real high-end socks. Especially adapted to the needs of cyclists, the socks combine **padding and protection** with excellent ventilation and an **antibacterial footbed**. What more could a cyclist's foot wish for? *Material: 70 % polyamide, 14 % polypropylene, 13 % polyester, 3 % elastane.*



€ 19,50  
Item no.: 810777



# CYCLING ACROSS AMERICA WITH TAILWIND

THOMAS WIDERIN'S LONG WAY FROM YUKON TO FLORIDA

AUTHOR & PICTURES THOMAS WIDERIN

HE FINALLY MADE IT: THOMAS WIDERIN HAS NOT ONLY CONQUERED HIMSELF, BUT ALSO THE INCREDIBLE STRETCH OF ALMOST 7700 KILOMETRES FROM WHITEHORSE, ALASKA, TO MIAMI, FLORIDA. HE ALREADY TRIED TO UNDERTAKE THIS VENTURE IN 2012, BUT HE HAD TO GIVE UP WHEN HE REACHED HIS PHYSICAL AND PSYCHOLOGICAL LIMITS. IN CYCLE STORIES, HE TELLS HIS IMPRESSIVE STORY...



I am looking into the distance in astonishment. I have rarely seen something this beautiful. The highway seems to go on forever in a straight line, into the horizon. On the left and right side of the road, there are forests as far as the eye can see. So dense and dark that it seems almost impossible to get through. In the distance I can see high mountains. The longer my eyes follow the course of the road, the narrower it gets until I can only see a small line in the distance.

I am standing on the Alaska Highway. The famous road that leads over 2288 kilometres from Dawson Creek in British Columbia to Delta Junction in Alaska. My fully packed TEAM DX CROSS is standing next to me on the highway. It is equipped with all imaginable gear I need for my long journey. I slowly swing my left leg over the frame of the bicycle and place my foot on the pedal. When the cleat engages, I hear a clicking noise. The noise I have been looking forward to for so long.

Then my journey begins... I have prepared myself for this moment for almost four years. In summer 2012, I was already in the same place with my bike. I was on my way to New York, but had to cancel the trip early. After I had been diagnosed with burnout, several months of therapy and a hard way back into "normal" life followed. I soon started yearning to again start my unfinished project. Shortly after, the preparations began.

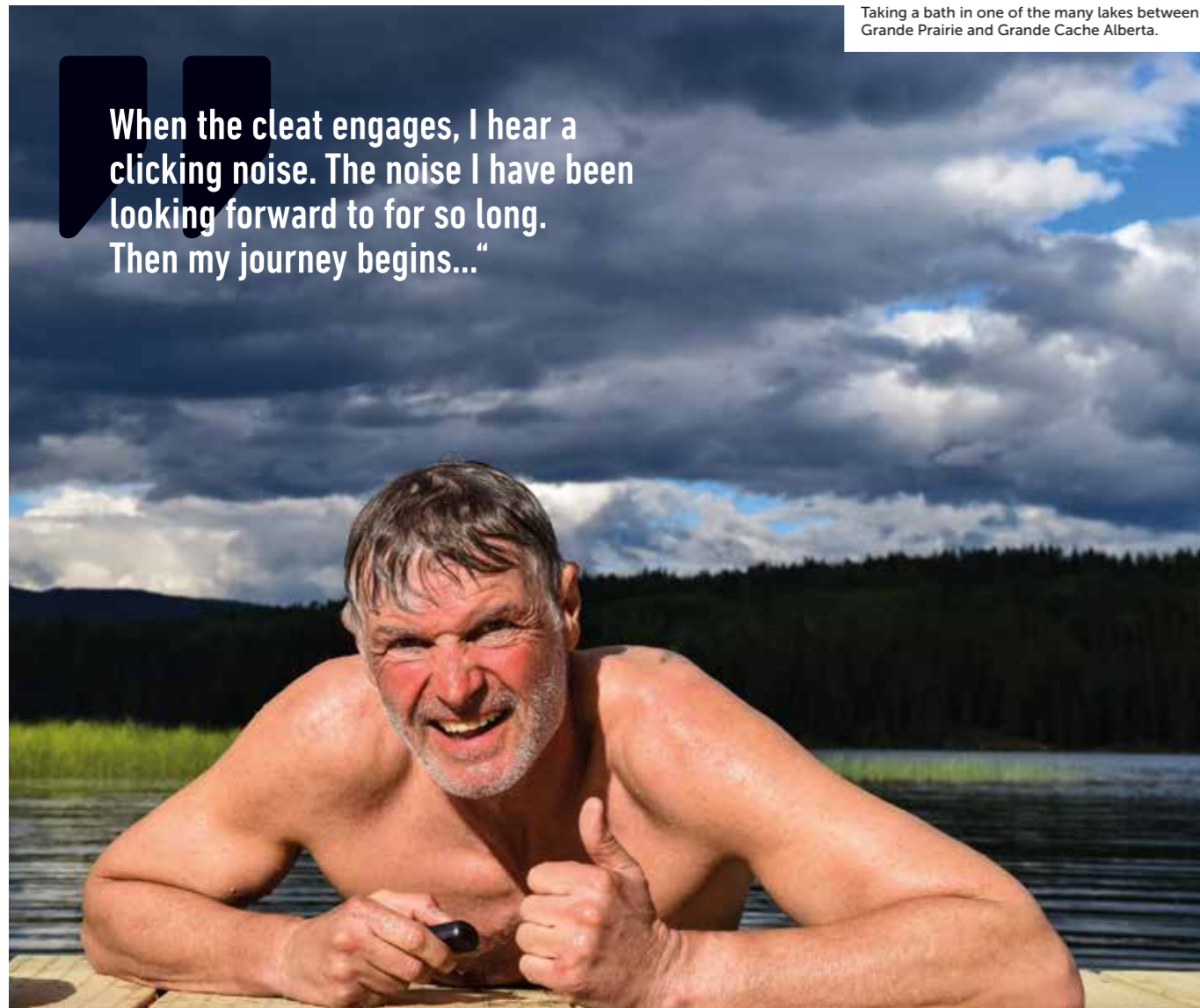


Taking a bath in one of the many lakes between Grande Prairie and Grande Cache Alberta.



A furry travelling companion: a black bear standing next to the Alaska Highway.

When the cleat engages, I hear a clicking noise. The noise I have been looking forward to for so long. Then my journey begins..."





1



2



3



4

1: Good food at a hot-dog stand south of Live Oak, Florida.

3: The family is always there, laminated on the top tube.

2: A pelican species on a pier near Carabelle, Gulf of Mexico.

4: One of the greatest challenges: the loneliness of the road.

### A new, old project

Based on the experiences gained during my previous journeys, I knew I needed a very special bike. On the one hand, it had to be robust enough to not only transport the rider, but also a lot of luggage. On the other hand, it should be easy to ride on different surfaces. ROSE Bikes, my partner for this big project, provided me with the perfect tool: the TEAM DX CROSS. After the bike had been equipped with all special accessories required, I started my training and test rides. From the very beginning, I felt as if I had become one with my bike. This feeling did not change at all on my 7700-kilometre ride from Whitehorse to Miami that started at the beginning of June 2016.

### Loneliness and bears

At first, the famous Alaska Highway ran almost 2000 kilometres through lonely hinterland, lined with nothing but forests and mountains, leading up- and downhill. My TEAM DX CROSS already had to prove itself during the first part of my journey: asphalt roads alternated with permafrost and gravel roads. I cycled through a fascinating landscape and daily encountered wild animals. Mountain sheep, bison and above all black bears and grizzlies belonged to my constant companions. As I was biking through the hinterland, I had to transport a lot of equipment with my ORTLIEB panniers. My initial concerns that this heavy gear could drop off my bike became less present from day to day. There were no problems at all.

### Over the Rocky Mountains and across the national parks to North America

After I had left the Alaska Highway, I cycled through three of Canada's most beautiful regions including Jasper, Banff and Kootenay national park. As an experienced climber from Tyrol, I especially enjoyed biking in the Rocky Mountains. However, to make climbing mountains a real pleasure, ROSE Bikes had equipped the bike with special gears. This gear ratio even allowed me to climb up several passes without even having to get out of the saddle. In Montana, I crossed the border from Canada to North America. In Wyoming and Nebraska, I left the Rockies behind and entered the infinite widths of the prairie. On my way I met Indians, Amish people and a shaman – those

Almost 7700 kilometres without a single puncture – this is only possible with a top bike!"

were very special experiences for me. Everywhere they marvelled at "the cyclist from Austria", the Indians in particular could not see enough of my bike. I spent almost a whole afternoon explaining everything about it and everyone wanted to go for a ride.

### A disaster and a rescue through ROSE Bikes

In the middle of Kansas I got into huge difficulties through no fault of my own. It's hard to believe: So far, my TEAM DX CROSS had perfectly mastered all challenges and now it broke down due to a standard

service in a bike shop in Manhattan, Kansas! A mechanic used a hammer to install the rear wheel and thus destroyed the internal components of the axle. Irreparable, no replacement part available. Without my partner ROSE Bikes my journey would have been about to end. In Bocholt, they took all the necessary steps to ship a completely new wheel to Kansas. Yet this meant a lot of stomach ache and a forced break of five days for me.

### Heat, wind and a fight

I continued my way across Oklahoma, Missouri, Arkansas and Mississippi. Here, I

not only faced heat, wind and almost endless widths, but I also got into incredible situations. I encountered a murderer who had just been released from prison and experienced an encounter of Ku Klux Klan members.

South of Jackson, the capital of Mississippi, I learned how sensitive the issue "Elections" really was in the USA. I entered a gas station to fill up my reserves. Some locals were there, too, and I immediately got into conversation with them. It would have been better if I had not asked my question "Who will be the next president?". At first, they all looked at me

A cool picnic area: Columbia Icefield Jasper national park, British Columbia.





A short break near the Kootenav River in Canada.

**My TEAM DX CROSS by ROSE Bikes has been the most reliable companion during the whole trip!**

quietly, but within a very short time a heated debate developed. When a woman got up and started to gesticulate wildly, bedlam broke loose. A fight between several men followed and only stopped when two patrol cars with four police officers arrived. During the fight, I stood wide-eyed next to the bar and couldn't believe what I had done. The officers only let me go when I showed them my warrant card. Until now I cannot say which of the two groups finally won.



My trip continued across Louisiana. You could feel the aftermaths of hurricane Katrina who had caused havoc here in 2005 almost every day and I was also shocked by the criminality in the big city of New Orleans. The police did not allow me to camp in the open – I had to stay in a hotel.



**I did it: I finally reached the south!**

Riding along the Gulf of Mexico is like a cyclist's dream. Sand, dunes and sea air – wonderful! No more mountains, only little hills, many bridges and sections that have to be done by ferry. After another two weeks of cycling, I entered the Miami conurbation. Again a lot of traffic, again a big city. But then I finally made it and I could look back on a fantastic journey and a dream route: 7680 kilometres ridden, 43,560 metres in altitude (uphill), three times crossing of the Rockies, 14 states (three of which are in Canada), 25 kilo-



grams of additional luggage every day as well as water and nutrition, three worn chains, but not a single puncture. It is thanks to the TEAM DX CROSS and my partner ROSE Bikes that everything went so smoothly during the entire journey. I'm looking forward to continuing this great cooperation and making even more unforgettable journeys! ■

More pictures of my trip:  
[www.thomas-widerin.at](http://www.thomas-widerin.at) or  
[facebook.com/Thomas-widerin](https://facebook.com/Thomas-widerin)

# ON THE ROAD AGAIN

## GARMIN OREGON 600 NAVIGATION DEVICE TOPO GERMANY V7 PRO MAP\*

A path-breaking orientation officer with touchscreen. Knows more than 350 000 km of cycle path network thanks to the TOPO GERMANY V7 PRO map. It is robust and waterproof, with GPS and GLONASS satellite tracking.

€ 324,95  
 Item no.: 2130970



## ROSE CYCLE YOUR WAY DRINK BOTTLE 1 LITRE

For a great water balance: drink bottle with a volume of 1 litre and an anti-slip grip inside the BPA-free material. Also nice: a screw cap with bite valve and a high liquid flow.

€ 2,70  
 Item no.: 2203814



€ 64,95

Item no.: 1980882

## ROSE PACER II BIKE HELMET

Safer than Fort Knox: This ROSE helmet ensures even better impact protection thanks to a polycarbonate hard shell with a firmly attached polystyrene body. With a clever one-hand adjustment system.



from € 179,95  
 Item no.: 2215369

## LÖFFLER GORE-TEX ACTIVE COMFORT FIT JACKET

Weather protection for all those who know how to enjoy life. Windproof, waterproof and with a three-layer membrane technology excellently breathable. Material: 100% polyamide; inner and outer laminate: 100% polyester; membrane: 100% PTFE (polytetrafluorethylene).

## ORTLIEB BACK ROLLER PLUS PANNIERS

A perfect couple that is fond of travelling: Ortlieb's panniers can take a fair bit (approx. 20 l per bag), the roll closure keeps away dust and splashing water. Easy to click onto the rack with the Quick-Lock2.1 mounting system.



€ 139,95  
 Item no.: 2089852



€ 59,90

Item no.: 2256167

## SELLE ROYAL LOOKIN ATHLETIC UNISEX SADDLE

Welcome to the comfort zone: guarantor of comfort for her and him with Royalgel padding (reduces pressure peaks by up to 40%) and sealed Royal Vaccum Light surface.

\*Please note the battery law information on [rosebikes.com/battg](http://rosebikes.com/battg)

# ON THE SHOPPING LIST

## TREKKING/FITNESS SHOPPING MALL

WHETHER FOR CITY TOURS, FITNESS TRAINING OR BIKE TOURS:  
THE BEST PRODUCTS FOR BETTER CYCLING!

### BROOKS C17 CARVED SADDLE

How you saddle is how you sit – on this paragon here you will also **sit comfortably without breaking in**. The C17 CARVED from the British cult label BROOKS is not made from leather – surprise! – but comes with a Cambium saddle cover. **Vulcanized natural rubber** covered with a layer of organic cotton and a top layer made of textured textile – this offers high flexibility, durability and comfort even on longer bike tours.



€ 114,95  
Item no.: 2118899



€ 99,95  
Item no.: 2165781 (black)

### B + M IQ-X LED HEADLIGHT\*

This bright boy passes the **100-lux mark**: The IQ-X front light by B + M with a broad, homogeneous wide-field illumination turns night into day. Yet it also shines with its design: The **housing is made from high-quality aluminium** and serves as a cooling body. In addition, the B + M IQ-X LED headlight features sensor-controlled daytime-running light and parking light.



€ 19,90 each  
Item no.: 2254302 (rose gold)

### KNOG OI BELL

Looks like beamed down from the Enterprise: The KNOG OI bell probably is the most beautiful bell of the universe. Thanks to its **elegant design**, it perfectly integrates into every cockpit. And to make sure that everyone will find their own little bell, it is available in **two different diameters** and many different colours. Clever: a cut-out offers space for brake or shift cables. The weight? Only approx. 18 g (small) or approx. 25 g (large).

### TEASI ONE<sup>3</sup> EXTEND NAVIGATION DEVICE\*

Your private travel guide: The TEASI ONE<sup>3</sup> EXTEND navigation device knows its way around 28 countries thanks to **pre-installed maps** – including field, forest and hiking paths. Routing is based on the selected profile, which means that asphalt roads are preferred for road bikes and action-packed off-road trails for MTBs. **Navigation is done turn by turn** with a map and arrow, the integrated trip computer knows all important data, incl. graphic route profile, altitude and speed profile. Including handlebar bracket with ball joint for Ø 21-31,8 mm.



€ 154,95  
Item no.: 2256077



€ 38,95 per set  
Item no.: 2252364 (blue)



### ABUS NUTFIX SOLID AXLE SET

Small parts, big impact: The Nutfix axles by ABUS will drive wheel thieves mad. How it works? It's quite simple: Remove the old quick release axles, fit the new ones and add the special nut – done. The highlight: **The Nutfix cap** can only be removed when in vertical position, i.e. when the bike is lying on the ground. Pure **gravitation technology!** When secured to an object in a standing position, criminals will have a tough time. A conventional 11 mm open-end spanner is required for installation.

### ROSE TOUR GRIP PRO PLUS PEDALS

Too good to trample on: The ROSE TOUR GRIP PRO PLUS pedals are made for a stylish appearance on trekking, city and e-bikes. The durable **anti-slip platform** made of stainless steel even offers good grip when wearing low-tread shoes, **integrated reflectors** will let you shine in road traffic. With a CroMo axle with 2 cartridge bearings, the ROSE TOUR GRIP PRO PLUS pedals also offer a technical highlight.



€ 29,95  
Item no.: 2252346



€ 159,99  
Item no.: 2255502

### LIVALL BH62 BIKE HELMET

The dream of all music-mad cyclists: The LIVALL BH62 cycle helmet exposes its wearer to music via **integrated stereo loudspeakers!** This is how it works: The helmet is connected to your smartphone via Bluetooth so that you can use the LIVALL app to play music, answer calls, send SOS signals and much more. A **remote control for the handlebar** or buttons on the helmet allow you to comfortably control all features. The microphone is protected from wind and thus turns the helmet into a fully adequate headset.



€ 135,00  
Item no.: 2192697

### OAKLEY LATCH GLASSES

What for some are bikes, are glasses for others: You cannot have enough of them. The LATCH by OAKLEY is a hybrid of clever features and a stylish design. A **three-point fit** offers top comfort, performance and a precise optical alignment of the lenses. **Polarized lenses** filter reflections and – thanks to PLUTONITE glass – 100% of harmful UV rays. A clip inside the hinge allows you to securely fix the glasses to your clothes.

### CHROME SKYLINE PULLOVER JACKET

Rain? Wind? What are you talking about? The SKYLINE ANORAK pullover jacket by CHROME will turn you into a stoic who couldn't care less. Thanks to a **wind-resistant and water-repellent fabric**, this jacket is the favourite piece of clothing for in-between seasons. Numerous pockets on front and back offer a lot of storage space. A must-have for the urban jungle!  
*Material: 65% polyester, 35% cotton;*  
*Lining: 100% polyester.*

€ 149,95  
Item no.: 2256142 (black)



### LÖFFLER URBAN TECHNICAL SHIRT

Have you ever seen a sheep freezing? Or sweating? The woolly little animals are the masters of thermoregulation. With the LÖFFLER URBAN technical shirt you are very close to it! It is made from a technical **material mix consisting of merino wool and polyester** and thus combines the best of both worlds. It is **especially breathable**, offers best moisture management and great comfort.  
*Material: 50% polyester, 50% wool (merino).*

from € 59,95  
Item no.: 2253853 (grey)



€ 69,95  
Item no.: 2253064

### BASIL MILES DAYPACK PANNIER

This bag is as stylish as versatile: The MILES DAYPACK pannier by Basil is waterproof and can be used as a backpack, **shoulder bag or messenger bag**, thanks to included **shoulder straps**. Of course, you can also simply fix the bag to your rack with the **HOOK-ON SYSTEM**. A zip outer compartment holds everything you want to have ready at hand, two inner compartments with zip offer enough space for everything else.



€ 34,95  
Item no.: 2255966

### RAINLEGS REFLECTIVE RAIN PROTECTION

You no longer want to leave the field open to the weather? The RAINLEGS REFLECTIVE rain protection stands up to annoying rainfalls. The **wind- and waterproof** material with polyurethane coating trumps with a waterproof rating of approx. 10 000 mm and is even **reflective** in low incidence of light. And for the exceptional case that the sun is shining, you can simply roll up the legs and wear it as a belt.  
*Material: 100 % polyamide.*

### LEVI'S COMMUTER 511 5PKT JEANS

A convertible or an SUV – you always have to make a decision. This can be annoying. With the LEVI'S COMMUTER 511 everything is different, as these jeans are both, fish AND fowl: On the one hand, technical cycling trousers with a **water- and dirt-repellent surface treatment**, a high-cut back and a robust **CORDURA-cotton blend**; on the other hand, a stylish pair of trousers in a slim fit, with two hip pockets and a reflective band on the turn-ups.  
*Material: 97,7% cotton, 2,3% elastane.*

€ 109,95  
Item no.: 2251765



### NORTHWAVE OUTCROSS KNIT TREKKING SHOES

The very model of a travel companion: robust, braves all weathers, helps you to stand firm and does not eat up your provisions. You can go hiking or cycling with it and it even lets you look good: The OUTCROSS KNIT by NORTHWAVE (compatible with SPD) can do all of that and more. The **EXPLORER sole** with a Michelin rubber tread guarantees especially good grip. Certainly a good choice.

€ 89,95  
Item no.: 2252430 (blue)



# SAVING THE BEAUTIFUL FOR LAST!

IS THIS ALREADY THE LAST CHAPTER? TIME REALLY DOES FLY! OUR CYCLE STORIES HAVE INDEED ALMOST COME TO AN END, BUT WE HAVE SAVED SOME REAL GEMS FOR YOU! PRODUCTS THAT MERIT SPECIAL ATTENTION – SMART, PRACTICAL AND FASCINATING. SIMPLY THE BEAUTIFUL FOR LAST!



## MAVIC COSMIC PRO HELMET

Everyone who wants to ride fast wears red! The world's fastest superhero "The Flash" already knew this, too, and so, MAVIC has designed the COSMIC PRO in the same colour. Ride at full speed and enjoy high performance, comfort and safety! The LIVE FIT SL headband with the vertically adjustable ERGO HOLD SL system allows for individual adjustment to your head shape and thus ensures a perfect fit and a pleasant feeling. The latter is also thanks to removable, washable inside pads made from breathable 37.5 fabric. Besides, the COSMIC PRO is a real lightweight, weighing only approx. 230 g (size M). All those who think red is too fast can also choose between the colour combinations blue/black (item no.: 2252108) or white/black (item no.: 2252109).

€ 164,95

Item no.: 2252110

# ERGON IP3 SOLESTAR INSOLES

Those two are made for each other: ergonomics expert Ergon and insole specialist Solestar. Together, they have developed a pair of insoles that stabilize the feet in their natural position and thus prevent pronation and supination, the movements of the foot joint. The IP3 insoles transfer the power from the legs via the feet straight to the pedals in a biomechanically perfect way while protecting joints and tendons. In this way, the IP3 allow for more relaxed and healthy riding, as well as for more power on the pedals. The insoles made in Germany are compatible with all kinds of cycling shoes. The outer fabric consists of antibacterial carbon fabric, the padding uses orthopaedic EVA foam. Let your feet relax and enjoy more speed and fun on the bike! For more information on the ERGON IP3 SOLESTAR insoles visit [www.rosebikes.com](http://www.rosebikes.com).

€ 49,95

Item no.: 2253809



# FIVE TEN FREERIDER PRO FLAT PEDAL SHOES

The next generation of cycling shoes: The FIVE TEN FREERIDER PRO flat pedal shoes represent the evolution of the bestseller FIVE TEN FREERIDER. The cycling shoe pros from the USA have put a lot of innovations into the new flat pedal reference model. The popular MTB shoes are now even lighter and come with an optimized shape and an especially reinforced toe cap. The extremely slip-resistant STEALTH S1 sole with Dotty Rubber tread on the contrary has not been changed. As usual, it offers a lot of grip, best shock absorption, extremely high robustness and durability. However, no foot is like the other. That is why there is a special version of the FREERIDER PRO available for both men and women. The women's version is perfectly adapted to the female anatomy: It fits close around the heel and has a smaller forefoot area. To make sure that the shoes will match your outfit, both versions are available in different colour combinations.

€ 124,95

Item no.: 2251000 + 2251793



## GARMIN FĒNIX 5 / 5S MULTISPORT WATCH\*

Actually, the GARMIN fēnix 5 multisport watch should measure your heart rate and not make your heart beat faster. Yet, it is difficult to control the feeling of joy when wearing this stylish high-tech piece around your wrist. This flagship comes with a lot of new features, such as Bluetooth compatibility, improved heart rate measurement thanks to sensors at the wrist, an optimized display and easier handling. If you want to save, analyse or compare your data, you cannot only use a Strava integration, but also the Garmin Connect IQ™ platform. A performance widget on the display allows you to quickly and easily call up your data. Besides, you can use the group tracking function to track the current position of group members during your activity. In daily use, the GARMIN fēnix 5 impresses with a long battery life, smart notifications and a fitness tracker. There are two different case sizes available: The fēnix 5 comes with a diameter of 47 mm and the fēnix 5S is perfectly suitable for smaller wrists thanks to a diameter of only 42 mm. All those who are still thirsting for information can visit [www.rosebikes.com](http://www.rosebikes.com).

€ 599,99

Item no.: 2257946 (fēnix 5, black)  
Item no.: 2257933 (fēnix 5S, white)

\*Please note the battery law information on [rosebikes.com/battg](http://rosebikes.com/battg)





VAUDE AQUA BACK PLUS II



VAUDE AQUA BOX II

# VAUDE AQUA BACK PLUS II + AQUA BOX II

Even the weather gods would like these bags. Because no matter how much rain they send on earth, the Vaude Aqua will keep the contents dry. It is a real adventurer, perfect for long tours and cycling journeys. The roll closure is waterproof and thanks to the ECO FINISH, the bag simply repels water. A detachable shoulder strap, a volume of approx. 51 litres and anti-slip bottom feet make the bag suitable for daily use. The lockable QMR 2.0 mounting system of the Aqua bag fits racks with a tube diameter of 8 to 16 mm. The Aqua Back Plus II is sold in a set of two bags. For everything you want to have ready at hand and in view, the 6-litre handlebar bag Aqua Box II is the perfect place of storage. It is fixed to the handlebar with the KLICKfix adapter system and can thus be removed quickly with one hand, if need be. The Aqua Box can also be worn over the shoulders when you are not riding, thanks to a detachable carrying strap.

VAUDE AQUA BACK PLUS II (set of 2) € 149,95  
VAUDE AQUA BOX II € 89,95

Item no.: 2250703  
Item no.: 2250273

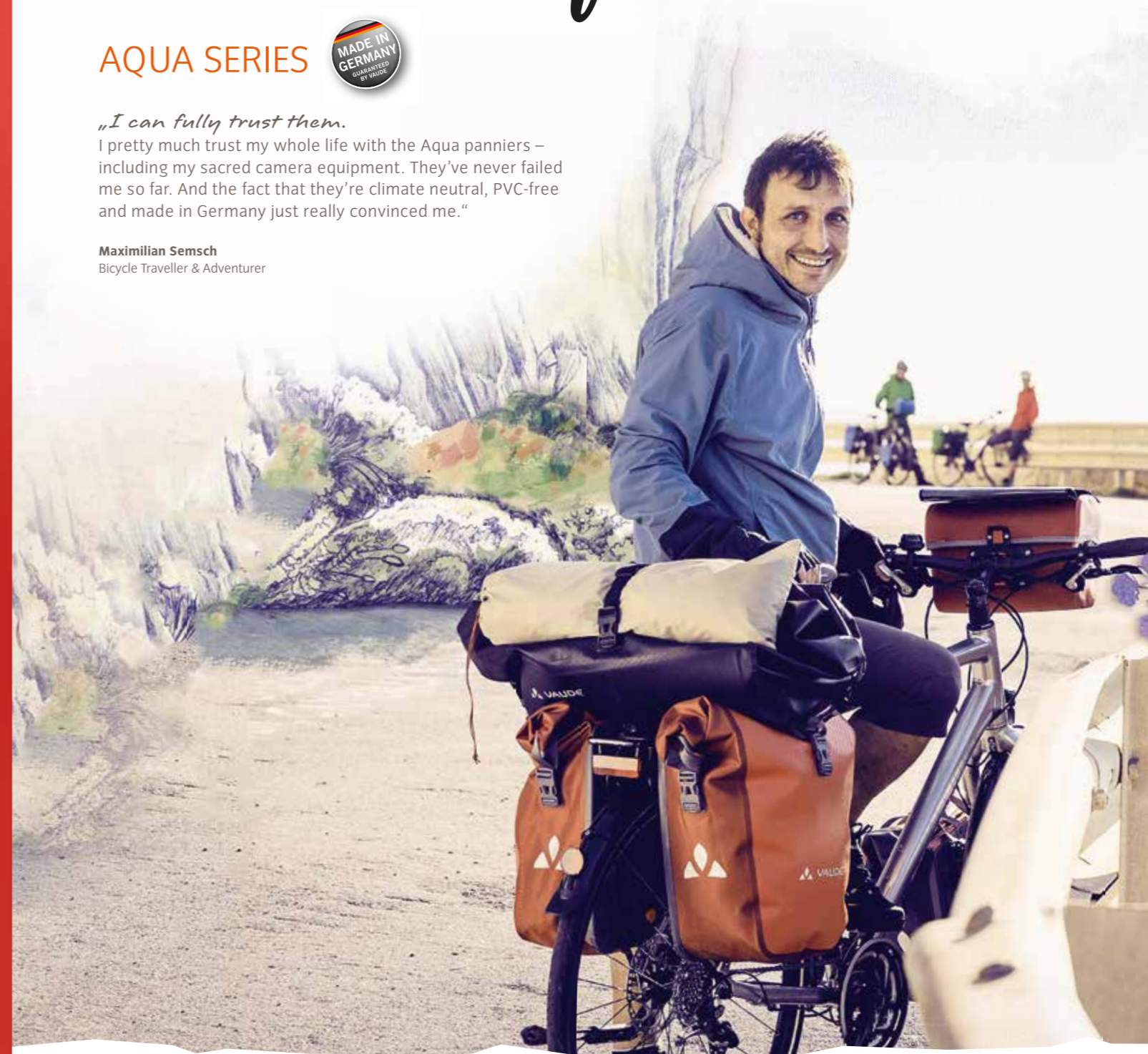
# All-time favourites

AQUA SERIES



*„I can fully trust them.*  
I pretty much trust my whole life with the Aqua panniers – including my sacred camera equipment. They’ve never failed me so far. And the fact that they’re climate neutral, PVC-free and made in Germany just really convinced me.“

**Maximilian Semsch**  
Bicycle Traveller & Adventurer



Available colors:

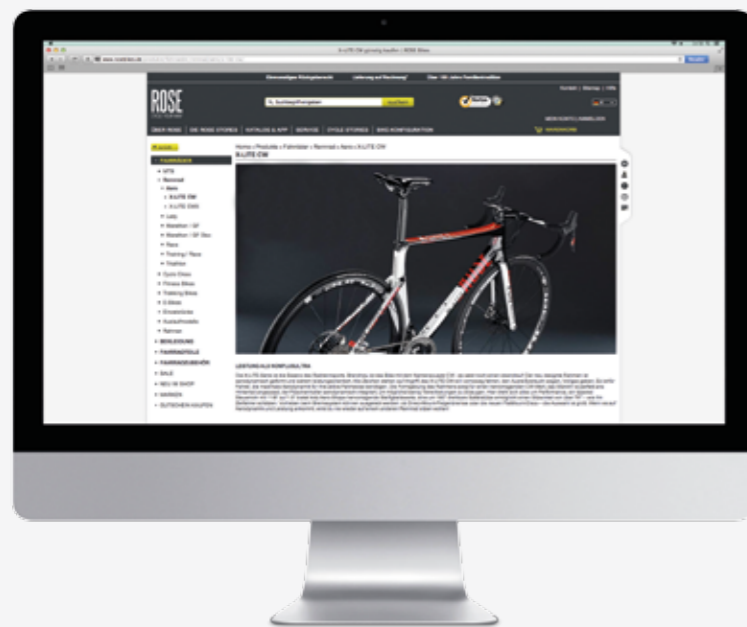


[www.rosebikes.com/vaude](http://www.rosebikes.com/vaude)



# ROSE ONLINE **WITH ONE CLICK** **INTO THE WORLD OF ROSE!**

HUGE RANGE AND TOP QUALITY – EASY ORDERING, FAST DELIVERY.



CYCLING IS OUR PASSION AND WE LOVE TO SHARE IT WITH YOU. ON ROSEBIKES.COM, WE MAKE SHOPPING AN EXPERIENCE – THANKS TO OUR PERFECT SERVICE AND A TOP SELECTION OF MANY BRANDED PRODUCTS.

ALL PRODUCTS IN THIS MAGAZINE CAN ALSO BE FOUND IN OUR WEB SHOP. SIMPLY ENTER THE INDICATED ITEM NUMBER INTO THE SEARCH FIELD ON ROSEBIKES.COM. THIS WILL GET YOU STRAIGHT TO THE PRODUCT PAGE. HERE, YOU CAN ORDER DIRECTLY AND FIND FURTHER INFORMATION ON THE PRODUCT, CURRENT PRICES, DELIVERY TIMES AND MUCH MORE.

## THE ADVANTAGES OF ROSE

- ✓ Fast delivery
- ✓ More than 4 million items available
- ✓ Individual configuration of your dream bike
- ✓ Assembly in Germany
- ✓ More than 100 years of family tradition
- ✓ Permanently updated range with new products and highlights

## WE BUILD YOUR DREAM BIKE.

CUSTOM-MADE – A BIKE MADE ACCORDING TO YOUR WISHES. BECAUSE A BIKE CAN ONLY SHOW ITS FULL POTENTIAL WHEN ALL COMPONENTS ARE ADAPTED TO YOUR REQUIREMENTS. OUR CONFIGURATOR ALLOWS FOR SUCH A CUSTOMIZATION: HERE YOU CAN CHOOSE FROM A LARGE NUMBER OF PARTS TO TURN A BIKE INTO YOUR INDIVIDUAL DREAM BIKE.

Step by step to your dream bike



Any Questions?  
**online** or by phone:  
 00 800 22 77 55 55



## CONTACT:

### ORDER HOTLINE:

For orders, product information, ROSE BIKETOWN and appointments with the BIKETOWN service workshop.  
 + 49 (0) 28 71/27 55 55  
 customerservice@rosebikes.com

### HOTLINE FRAMES/BIKES:

For sales, advice, orders and order processing regarding new bikes.  
 + 49 (0) 28 71/27 55 70  
 bikesales@rosebikes.com

### HOTLINE BIKE SERVICE, REPAIR AND MAINTENANCE::

For appointments and information on sent-in bikes.  
 + 49 (0) 28 71/27 55 14  
 (for calls from Germany)  
 bikeservice@rosebikes.com  
 rosebikes.com/bikeservice

### INTERNATIONAL NUMBER:

Free from landlines:  
 AT, BE, CH, DK, ES, FI, FR, HU, IT, LU, NL, NO, PL, PT, SE, UK  
 00 800 22 77 55 55  
 Calls from mobiles may be charged.

### HELPLINE:

+ 49 (0) 28 71/27 55 55  
 customerservice@rosebikes.com

### FAX:

FAX: +49 (0) 28 71/27 55 50

### OPENING HOURS SERVICE HOTLINE:

Mon.-Fri. 8 a.m.-6.30 p.m.  
 Sat. 9 a.m.-1 p.m.

except on public holidays in North-Rhine Westphalia, Germany

## IMPRINT

### ROSE BIKES ONLINE

On [www.rosebikes.com](http://www.rosebikes.com), you can find further information on bikes, fashion, accessories and much more. Take your time for choosing and ordering, with free shipping from 50 euros (within Germany). A one-month right of return applies to all products (except for customized goods, audio and video recordings and software, if the data media have already been unsealed).

### PROVIDER IDENTIFICATION

Indications of weight, geometries and features are information provided by the manufacturer. Technical changes for the purpose of technical progress as well as colour deviations, errors and typing errors are accepted. Delivery is conditional on the availability of stock. The delivery is carried out on the basis of our general standard terms and conditions. All prices are stated in euros and include the German value-added tax (currently 19% or 7%). The final price is calculated in accordance with the VAT rate valid in the country of delivery. You can find our terms and conditions online at [www.rosebikes.com](http://www.rosebikes.com).

ROSE Bikes GmbH, Schersweide 4, 46395 Bocholt, Germany, phone: 00 800 22 77 55 55\*, fax: +49 (0) 28 71/27 55 50, headquarters: Bocholt, commercial register: HRB 8315, district court of Coesfeld, management: Erwin Rose, Stefanie Rose, Thorsten Heckrath-Rose, German VAT (USt) ID no.: DE 811 440 544, WEEE Reg. no.: DE 26905420



# X-LITE CDX

GRAN FONDO DELUXE  
RIDE MORE, SUFFER LESS



[rosebikes.com/xlitecdx](http://rosebikes.com/xlitecdx)