

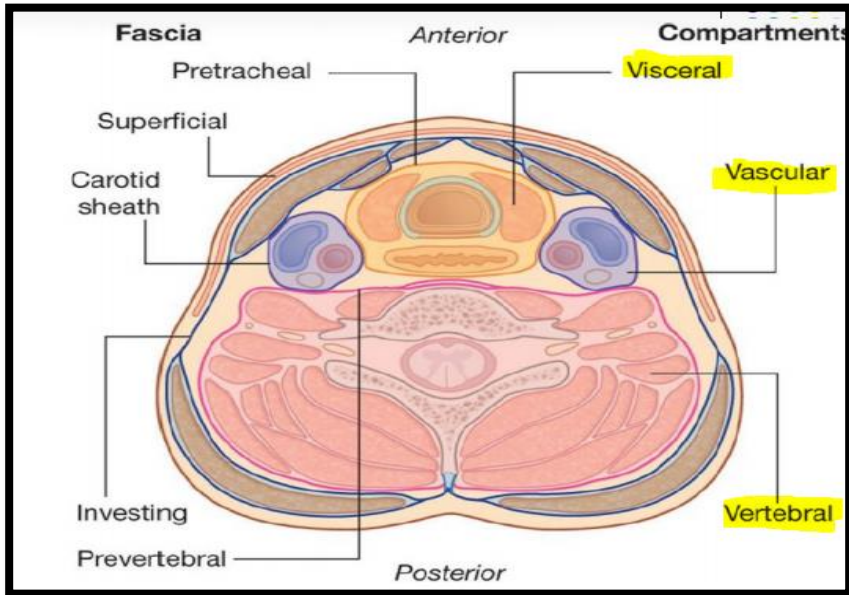


النادي الطبي | الجامعة الأردنية

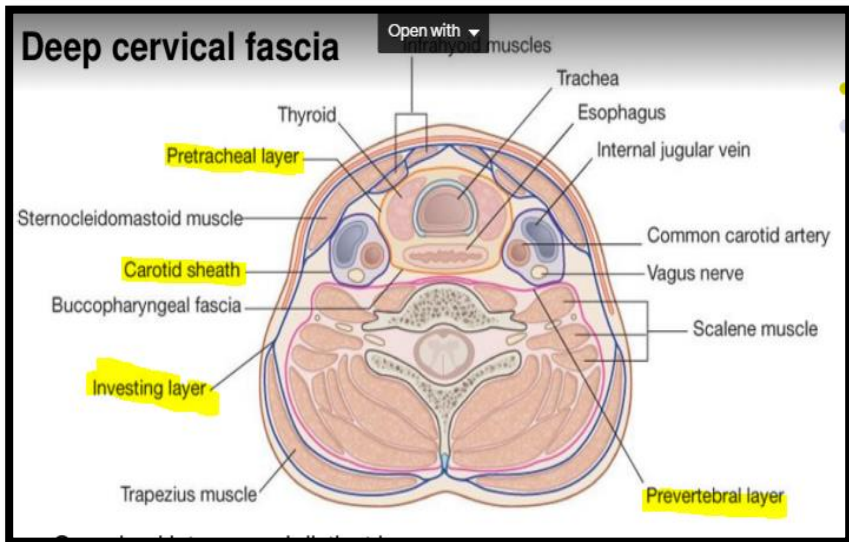
**Anatomy 2 lab**

**Dentistry /Batch 2017**

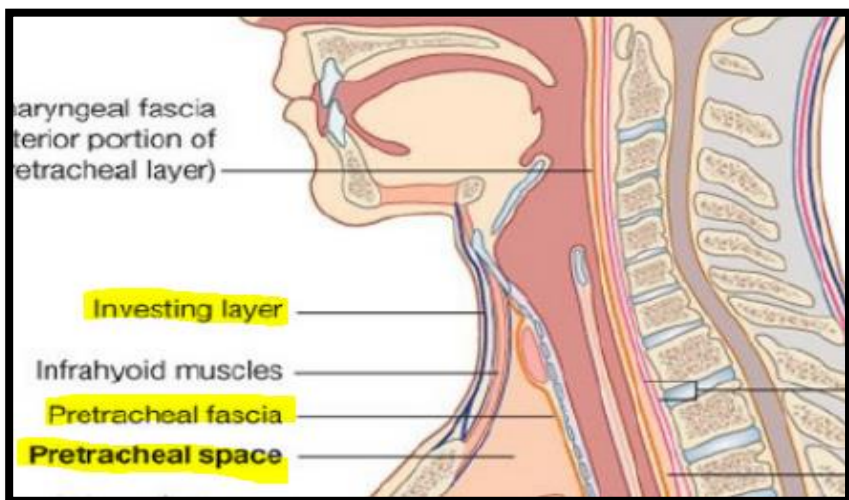
**S**arah **A**lhunity



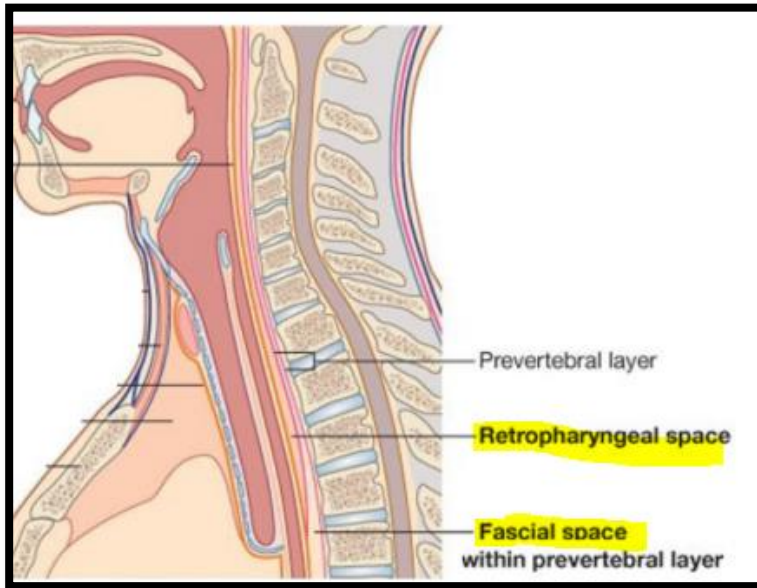
Neck compartments



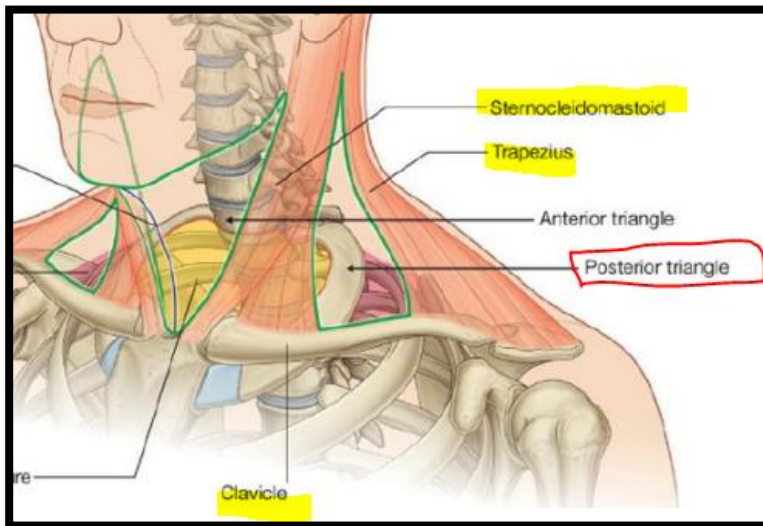
Deep cervical fascia



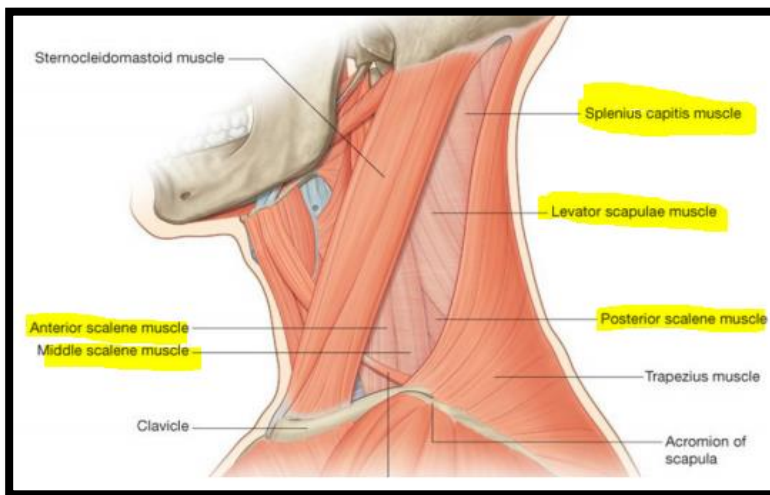
Pretracheal space



Retropharyngeal space and fascial space

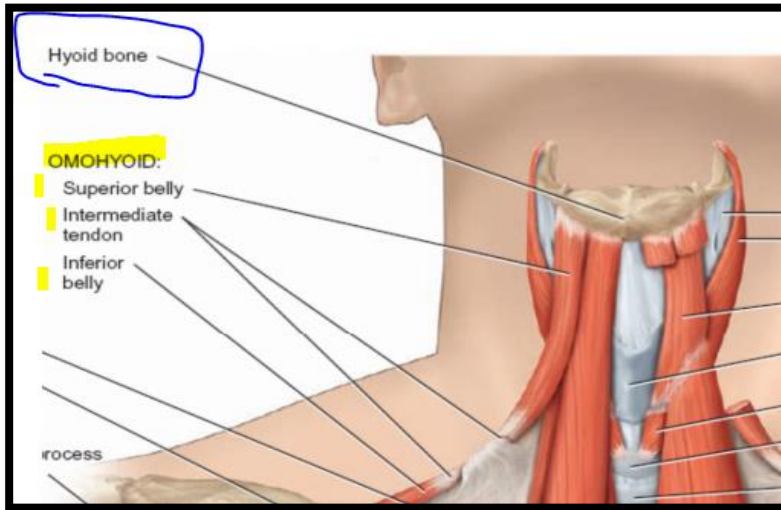


Posterior triangle borders

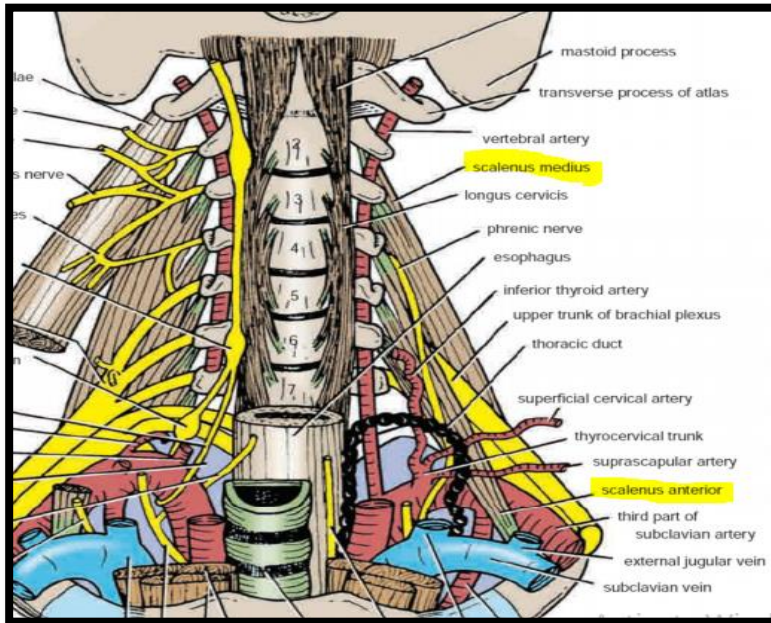


Posterior triangle floor

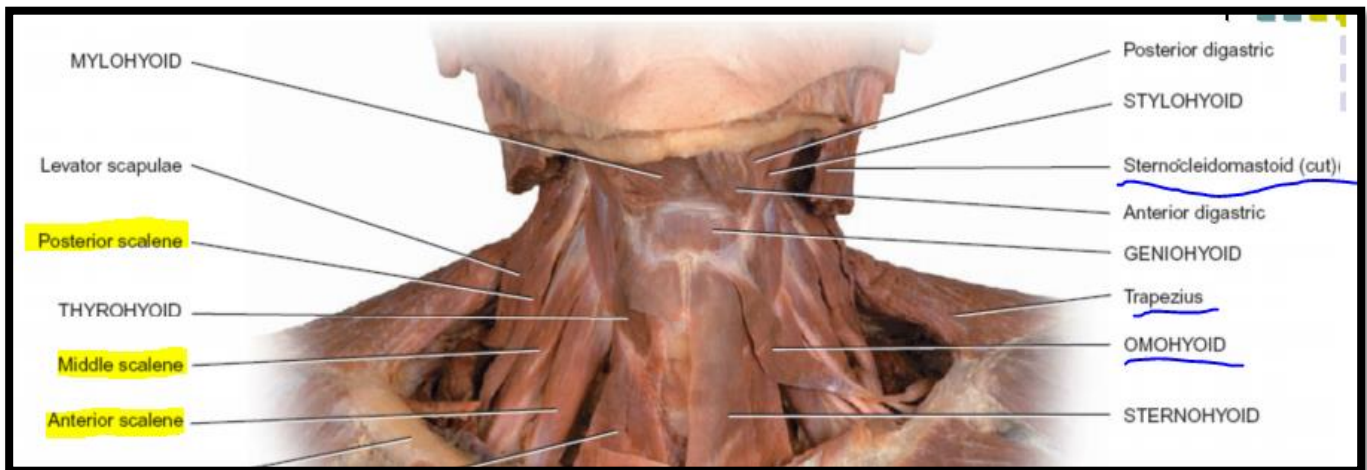


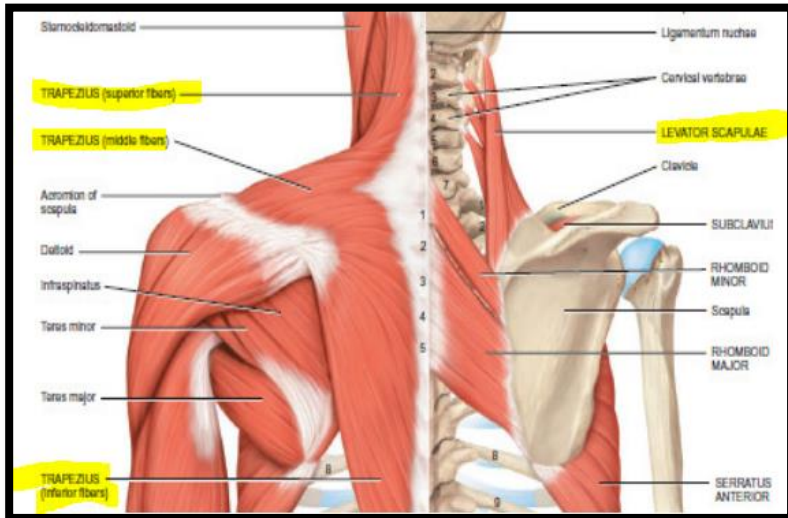


**Omohyoid Muscle**

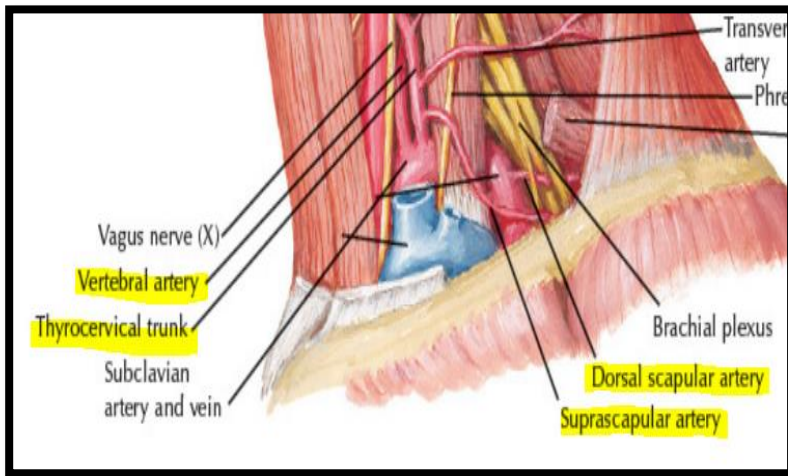


**Scalenus medius  
,anterior,posterior**

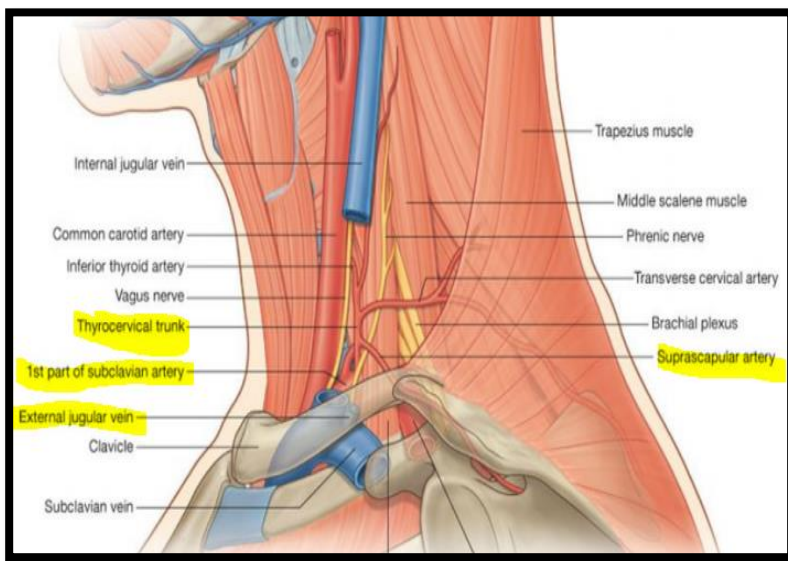


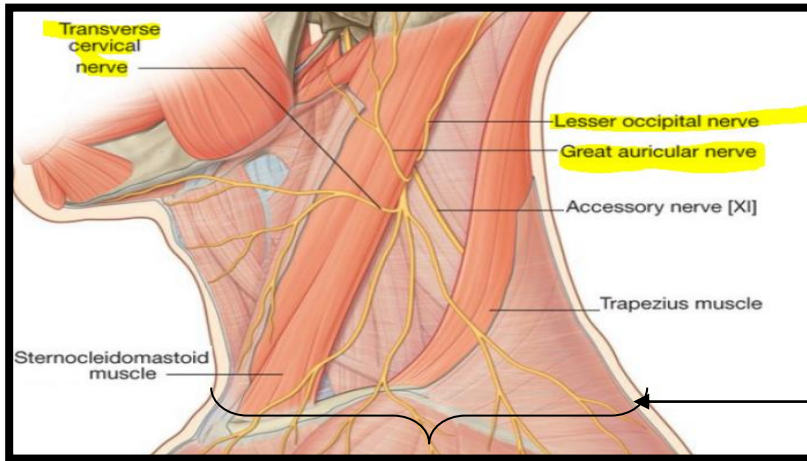


Levator scapulae & Trapezius

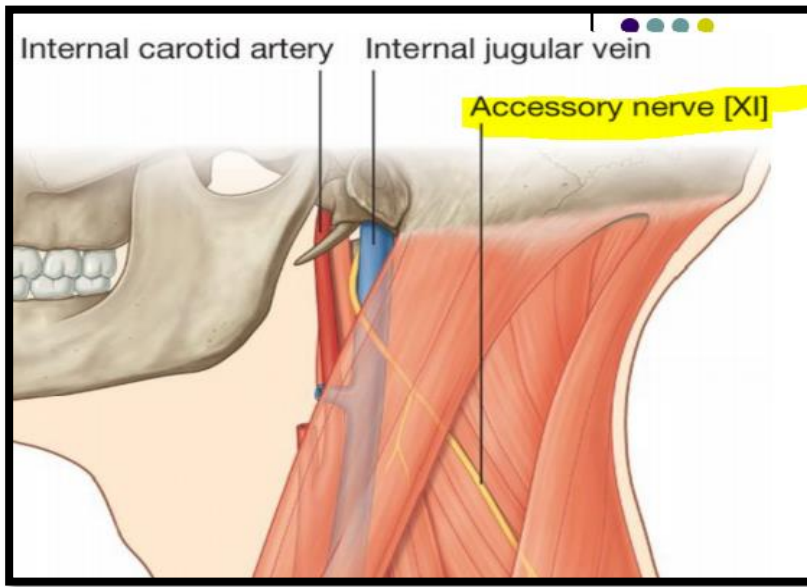
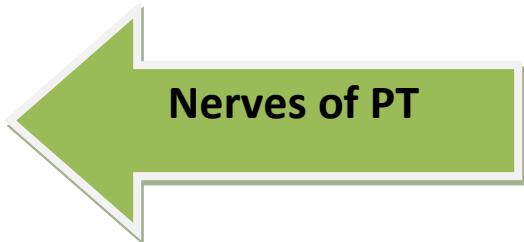
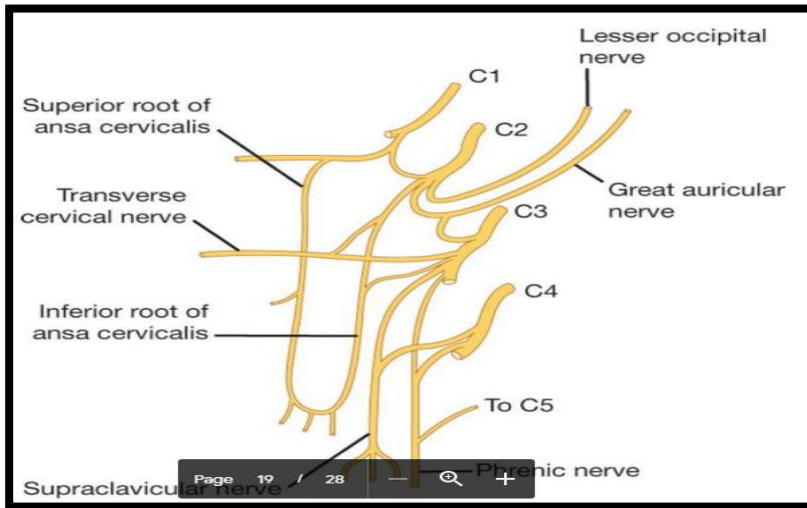


Vessels of PT

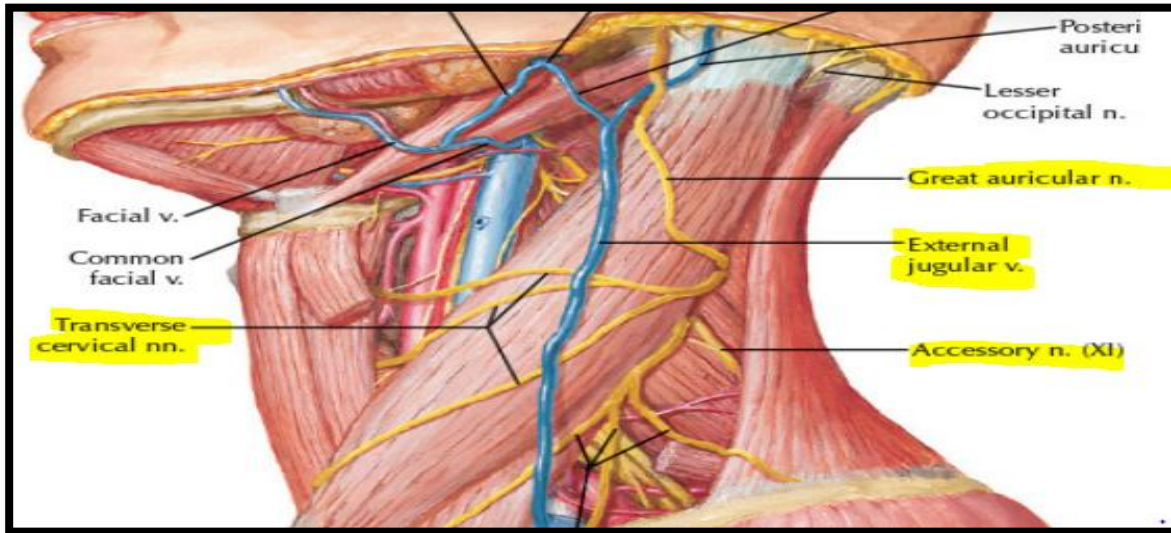




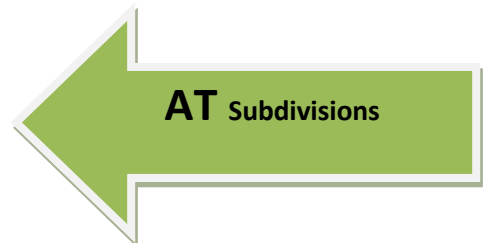
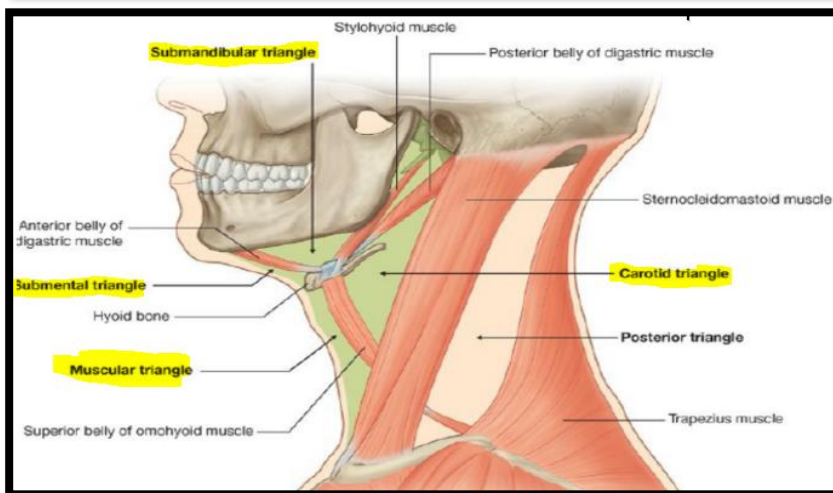
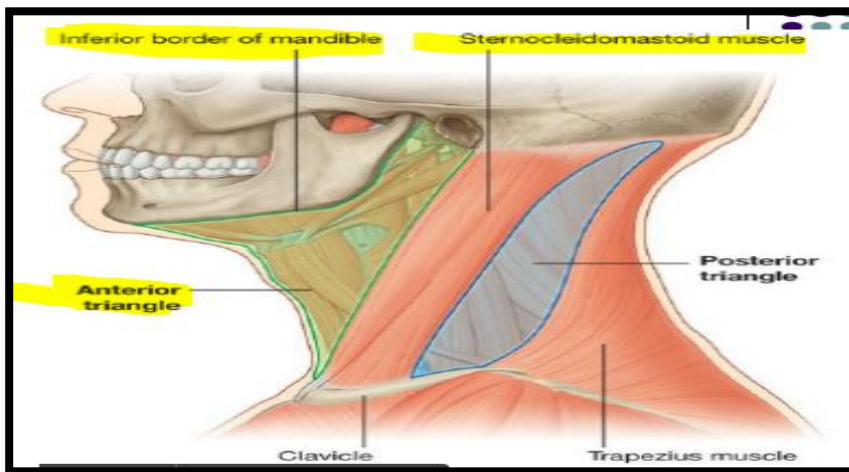
Supraclavicular  
nerves C3, C4

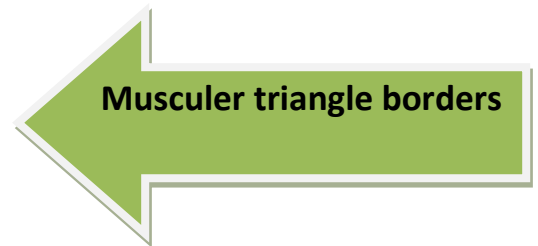
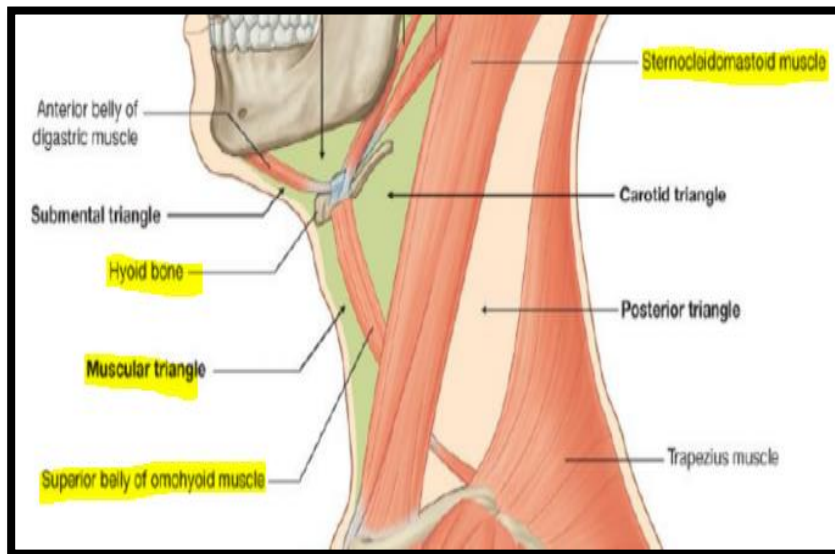
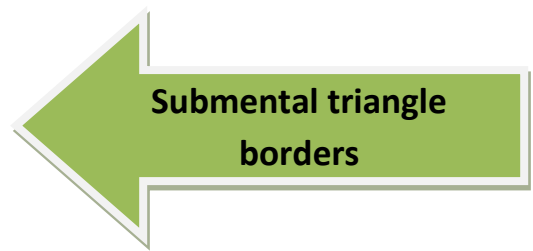
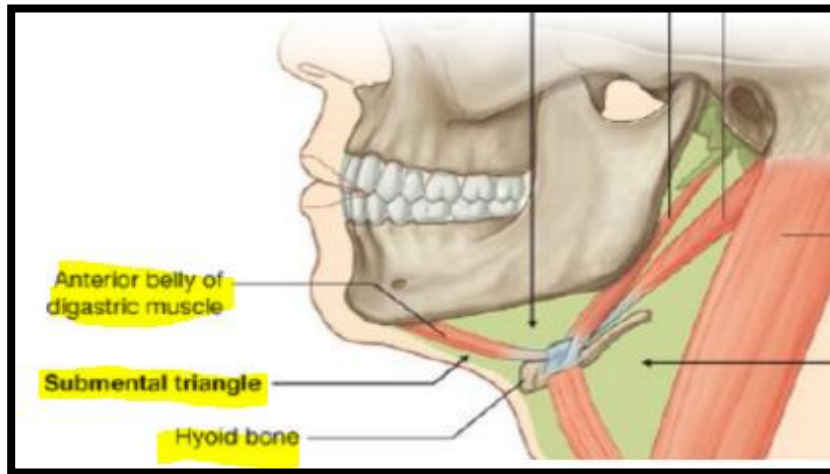
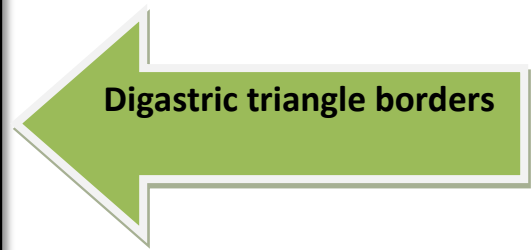
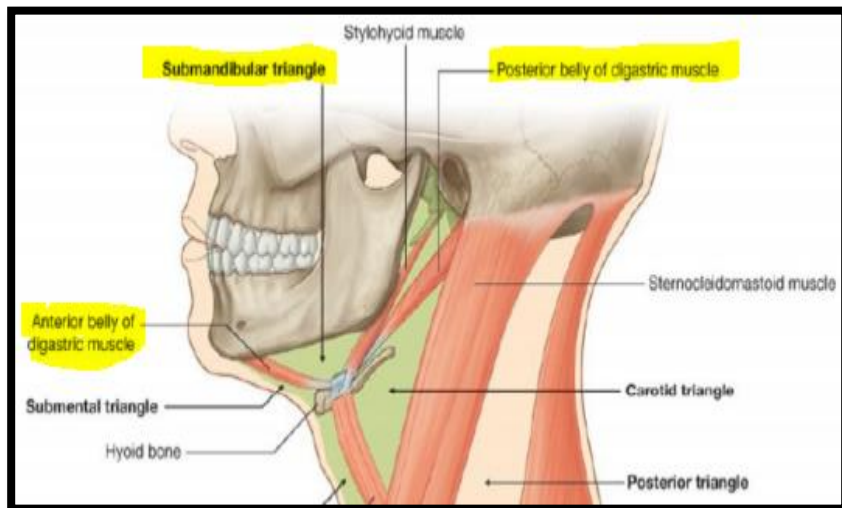




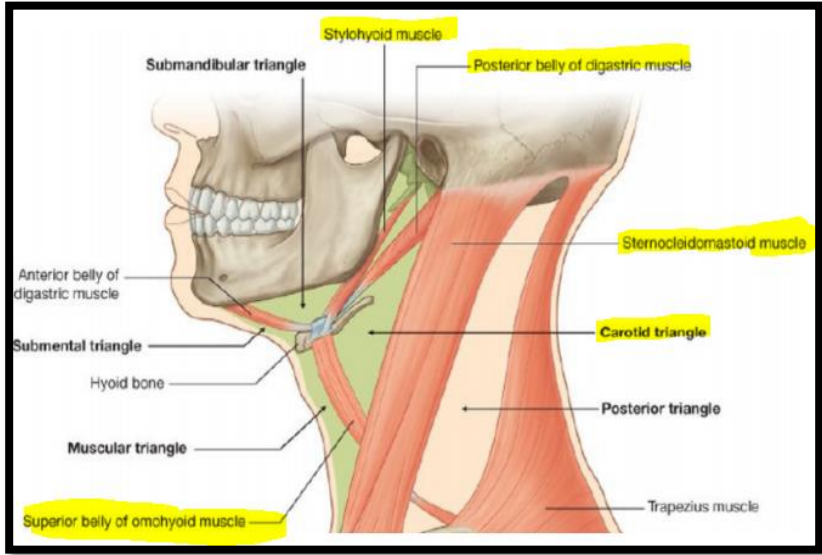


*End of PT slides*

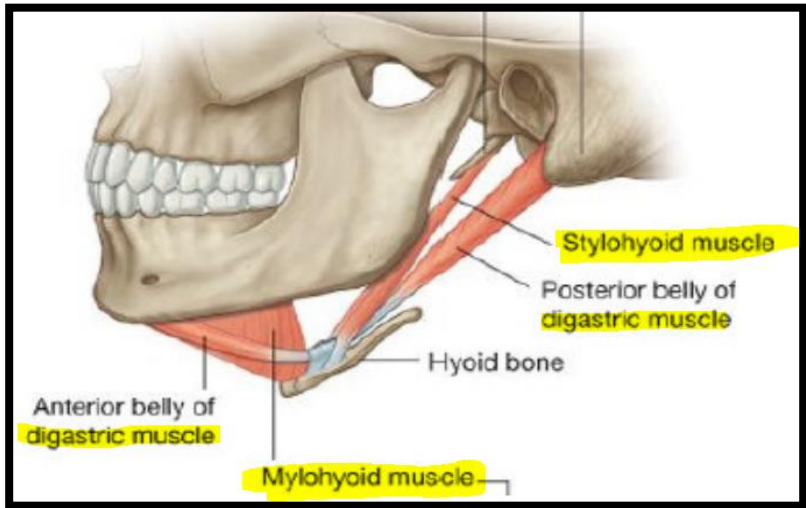




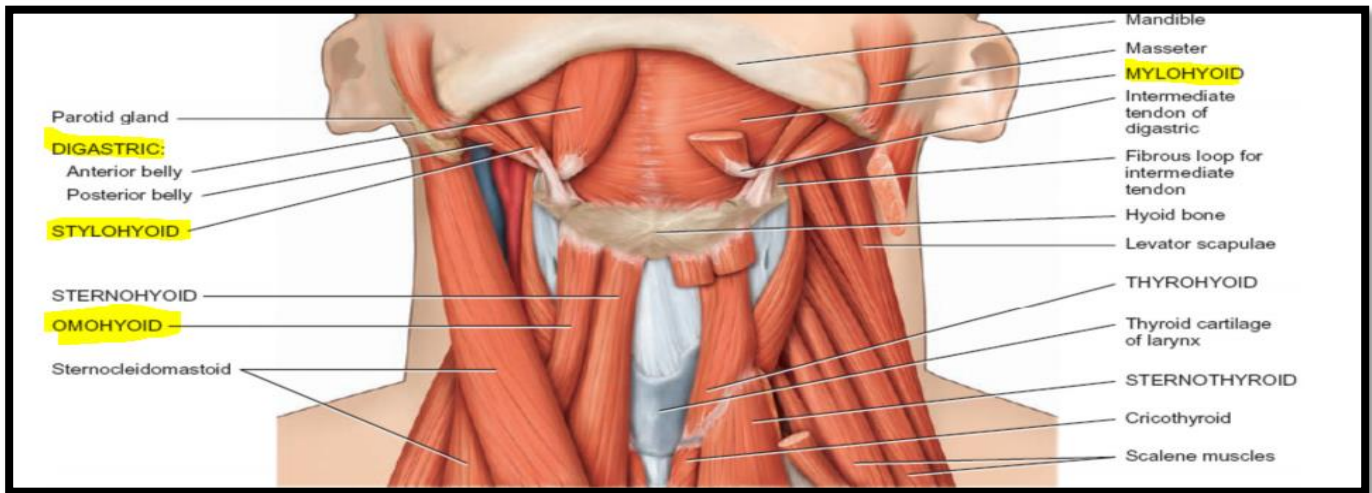


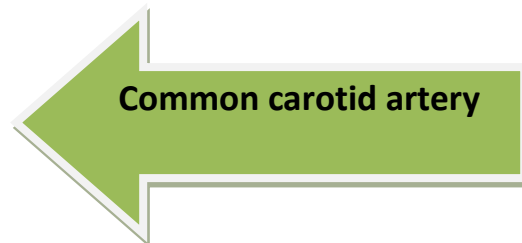
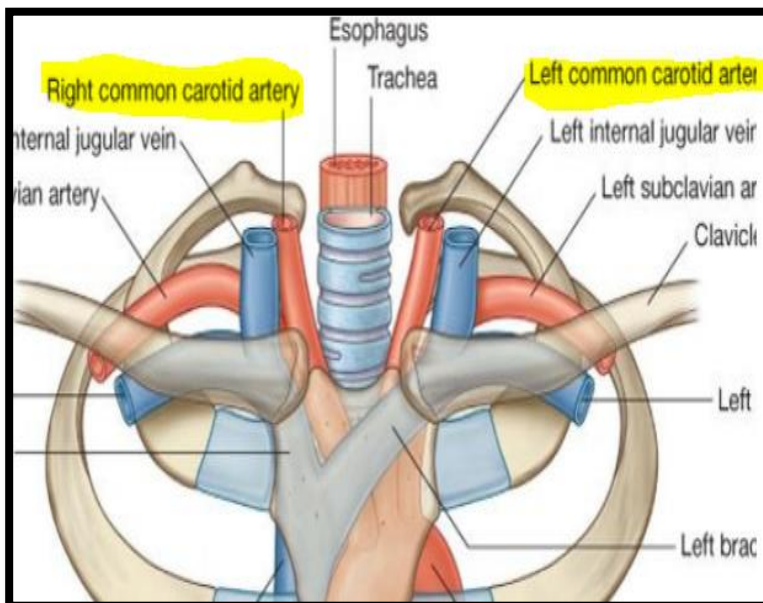
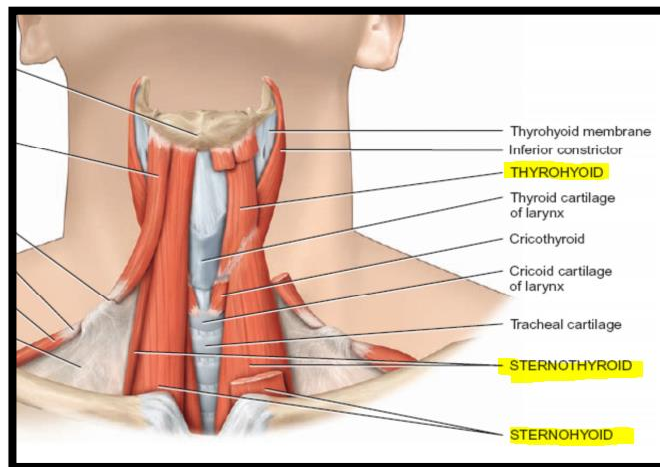
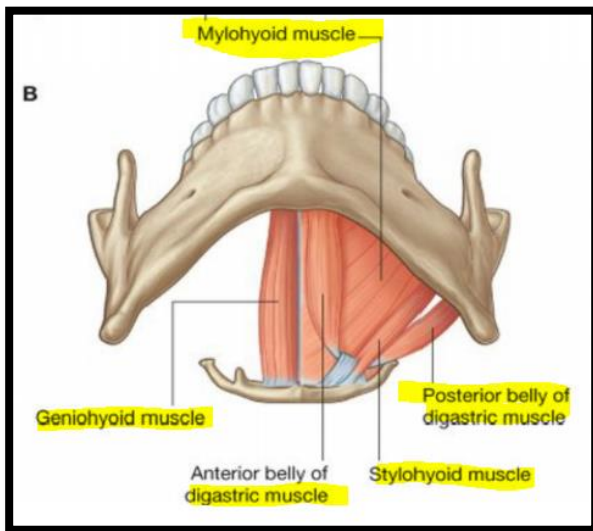
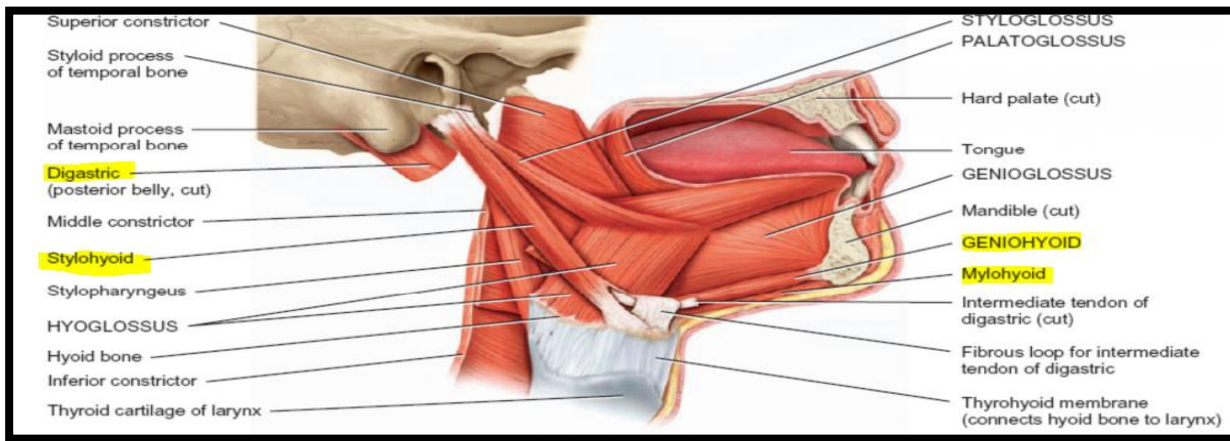


Carotid triangle borders

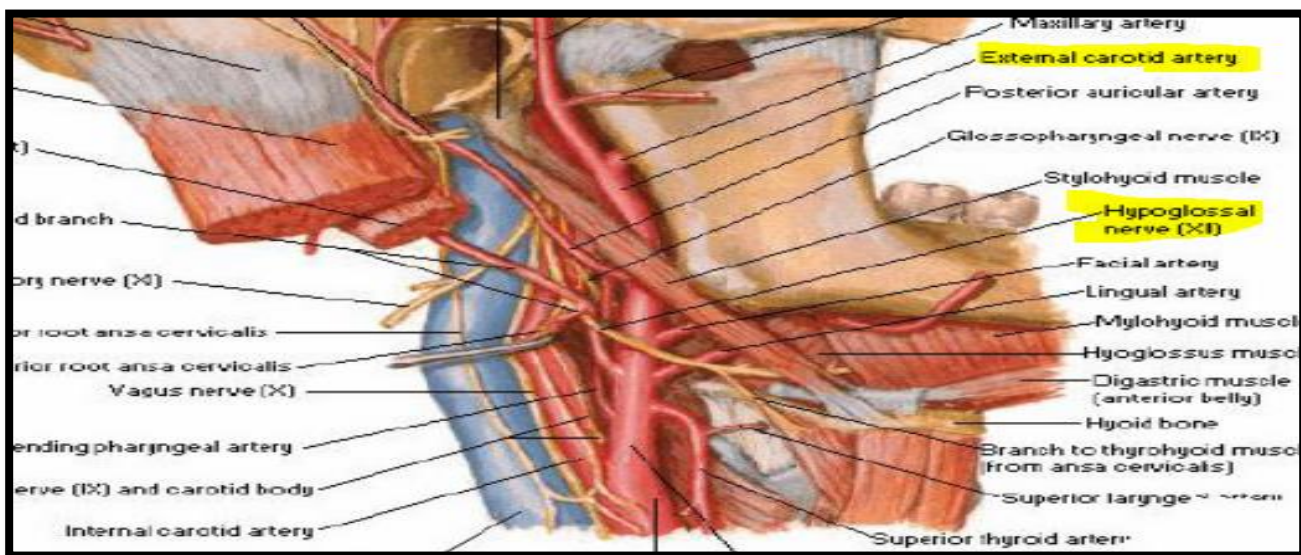
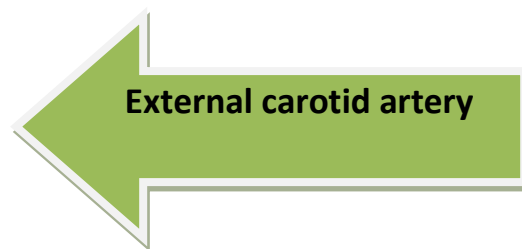
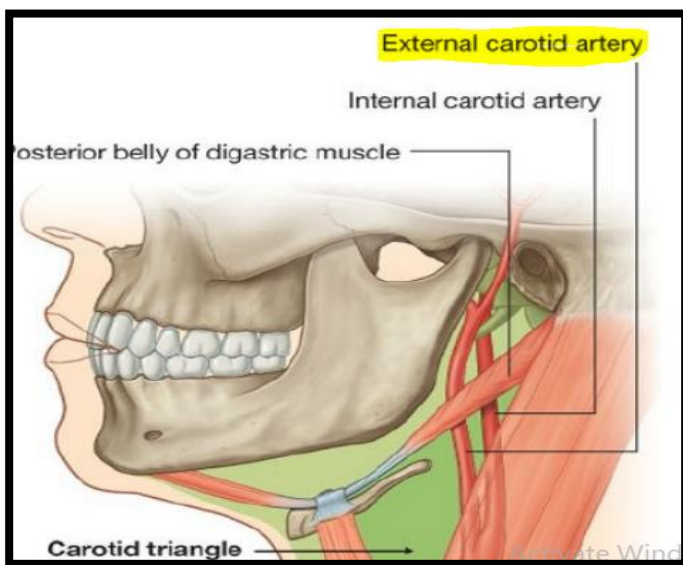
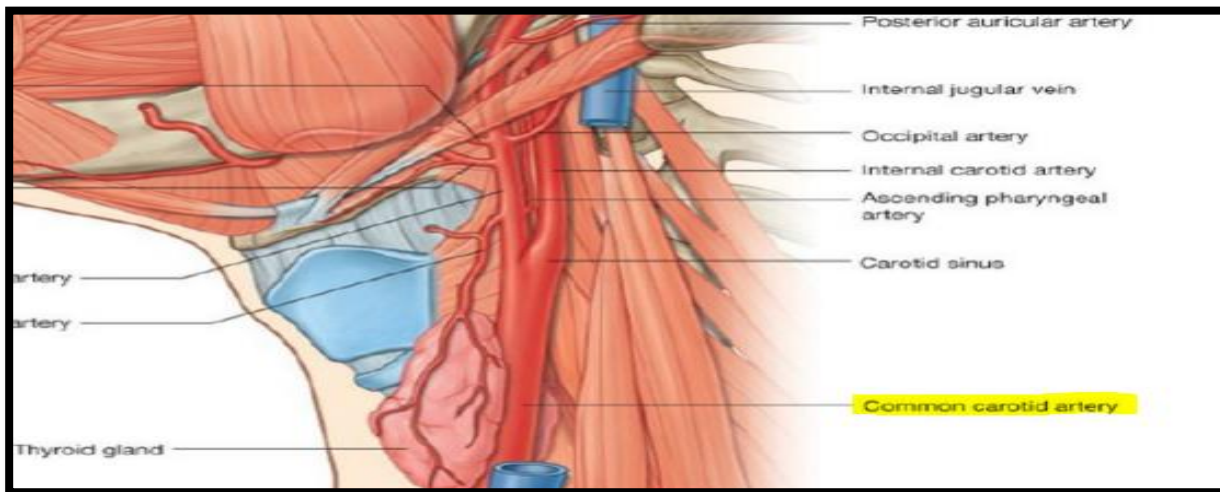


Anterior triangle Muscles

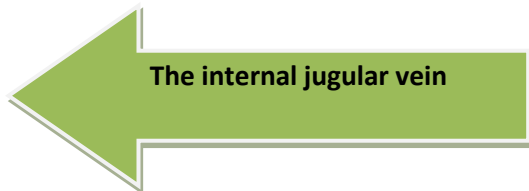
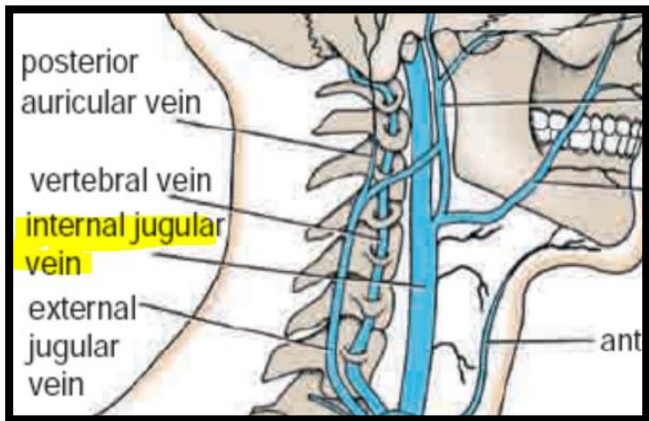
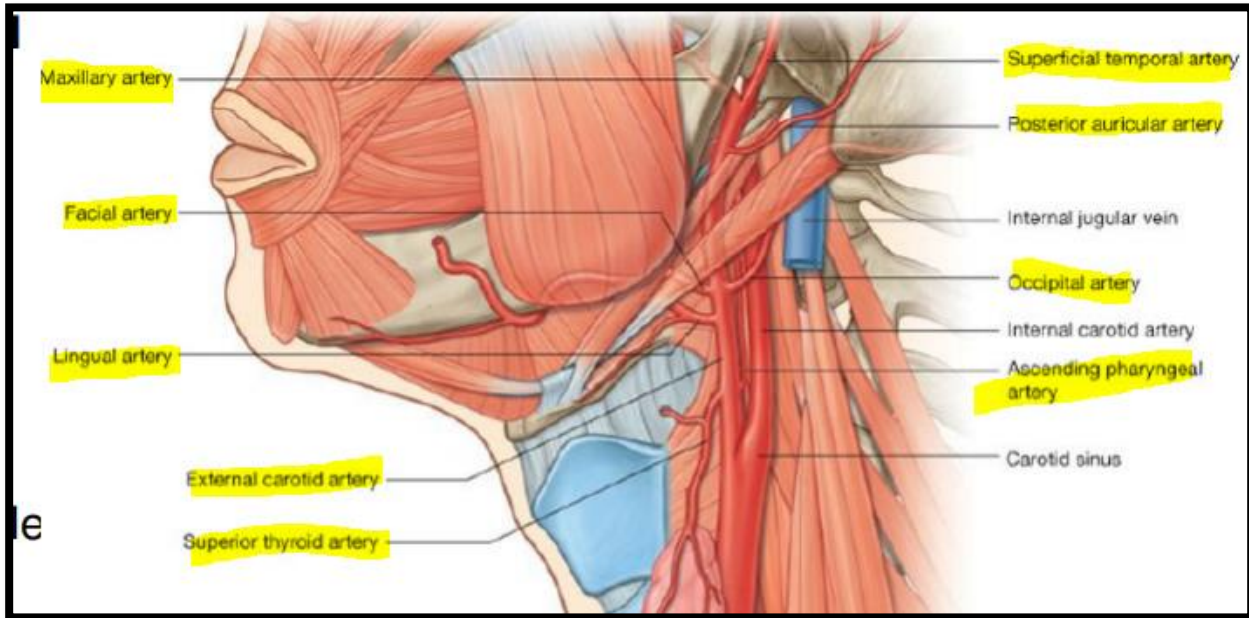
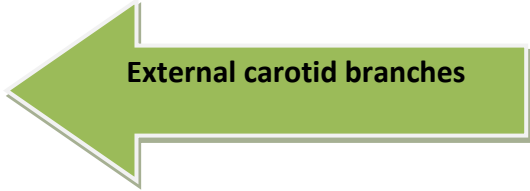
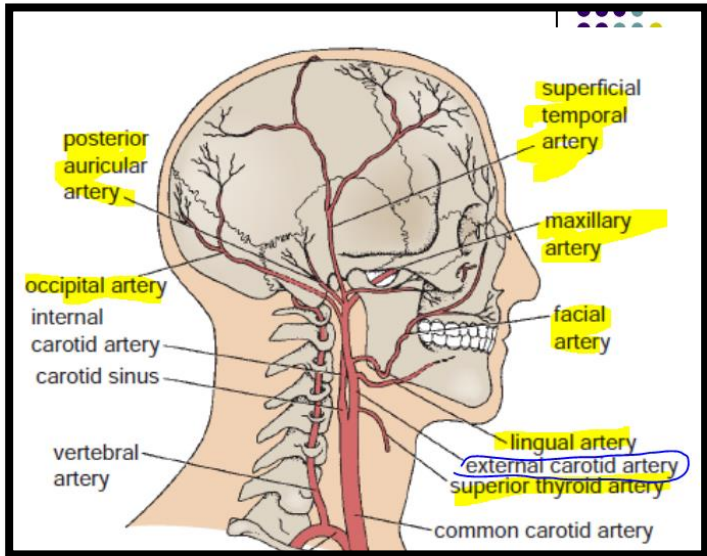


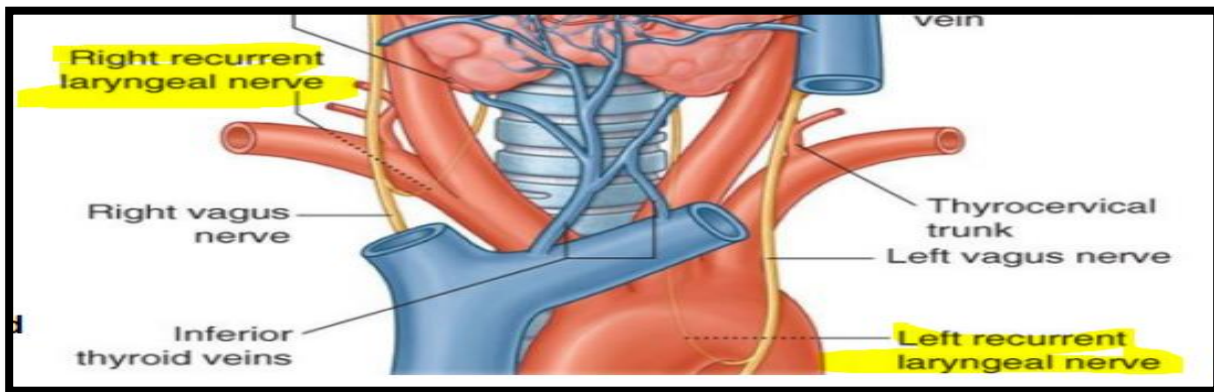
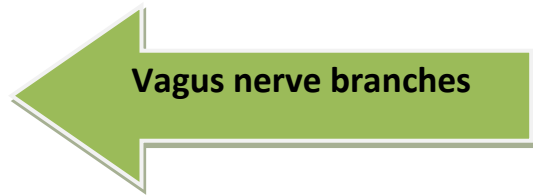
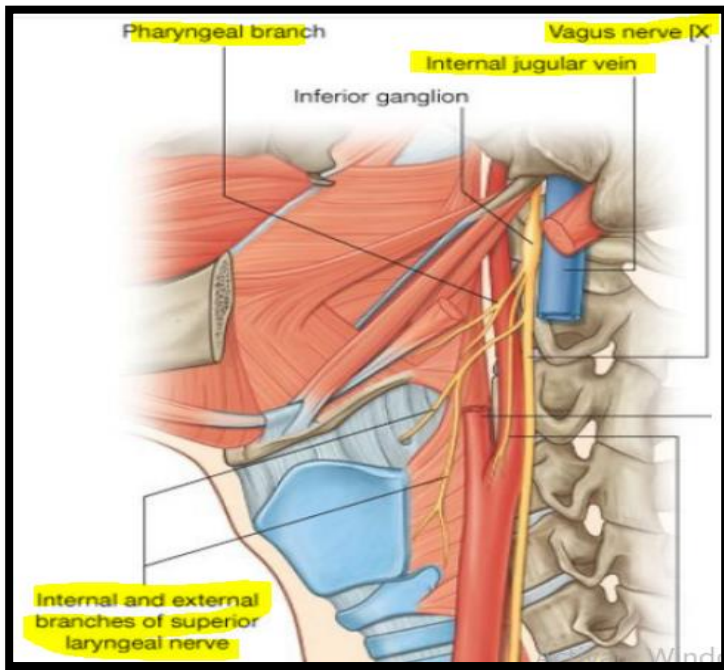
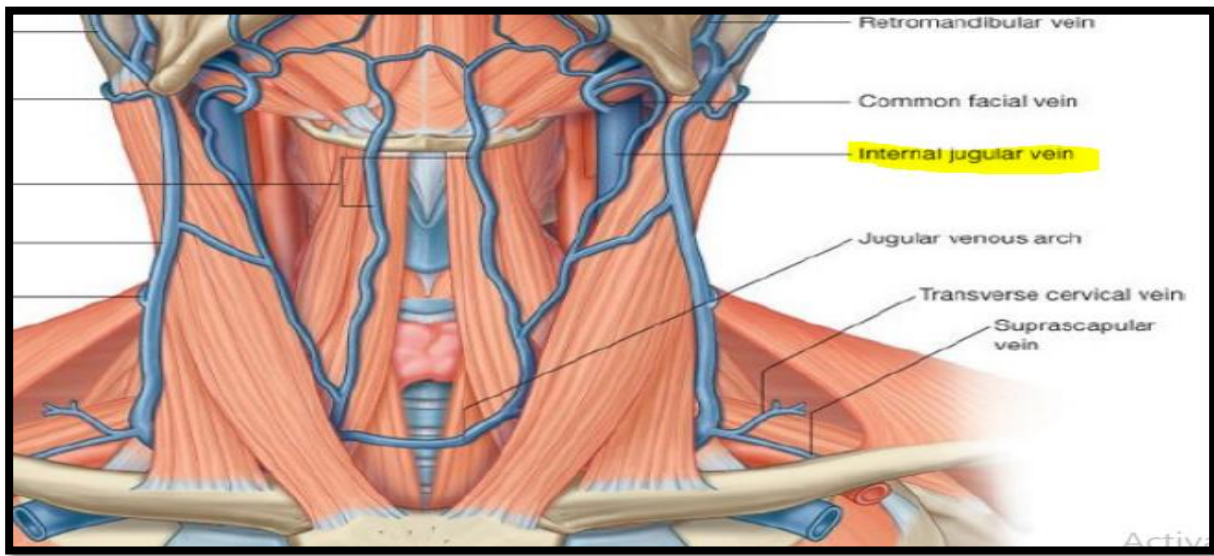


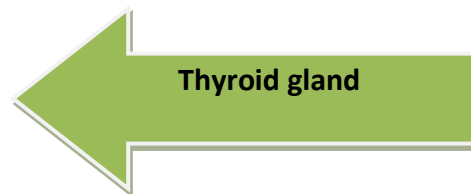
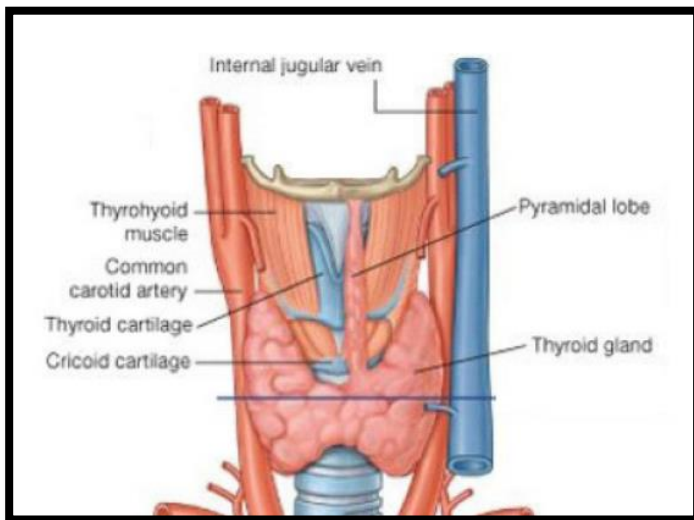
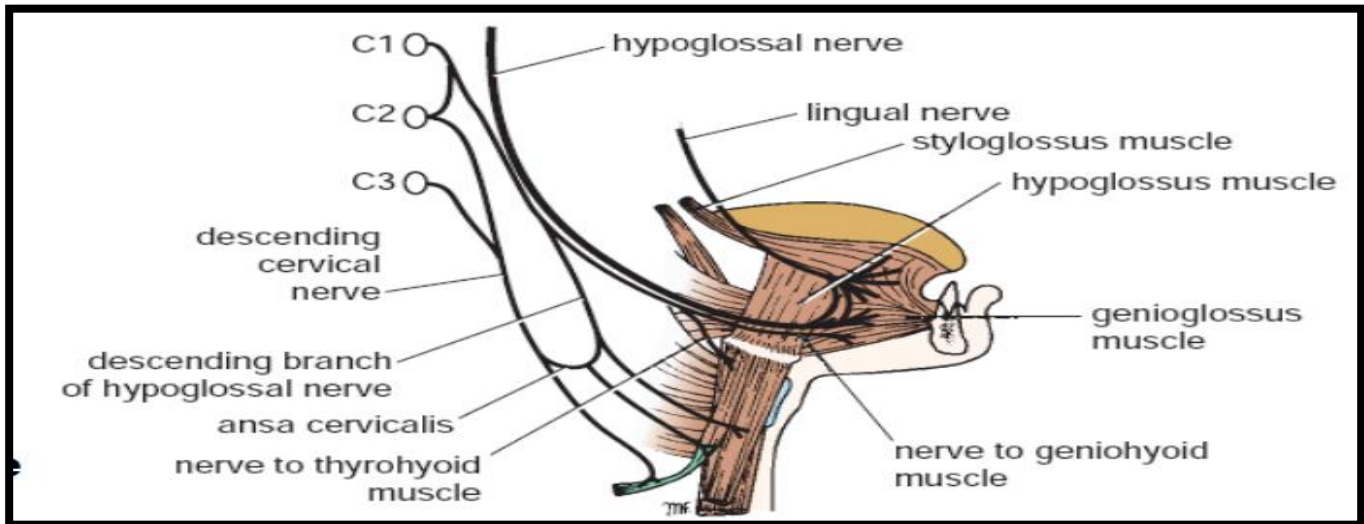
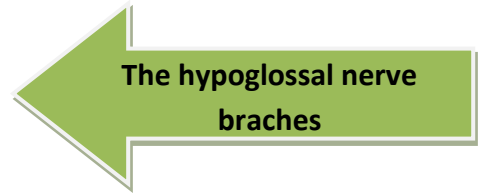
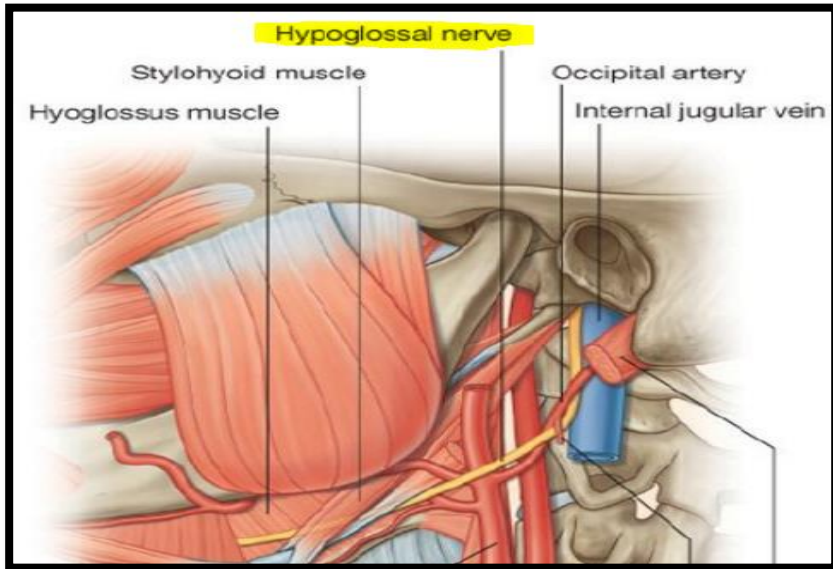




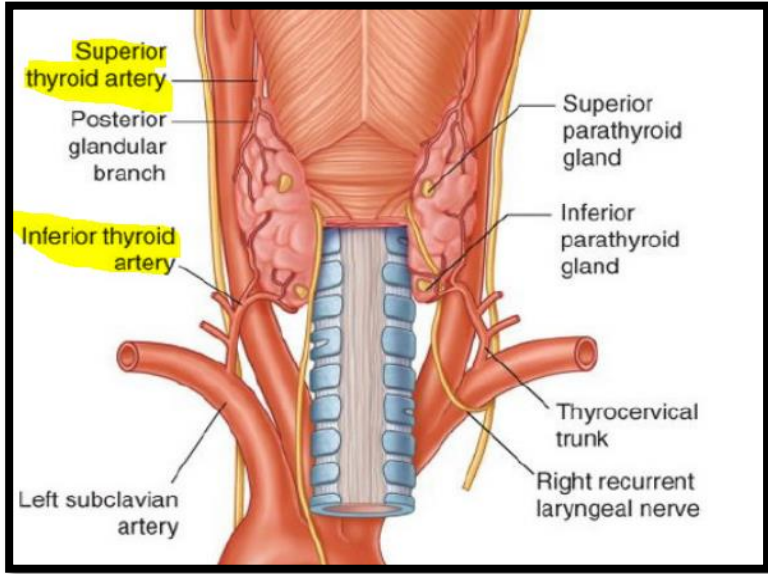




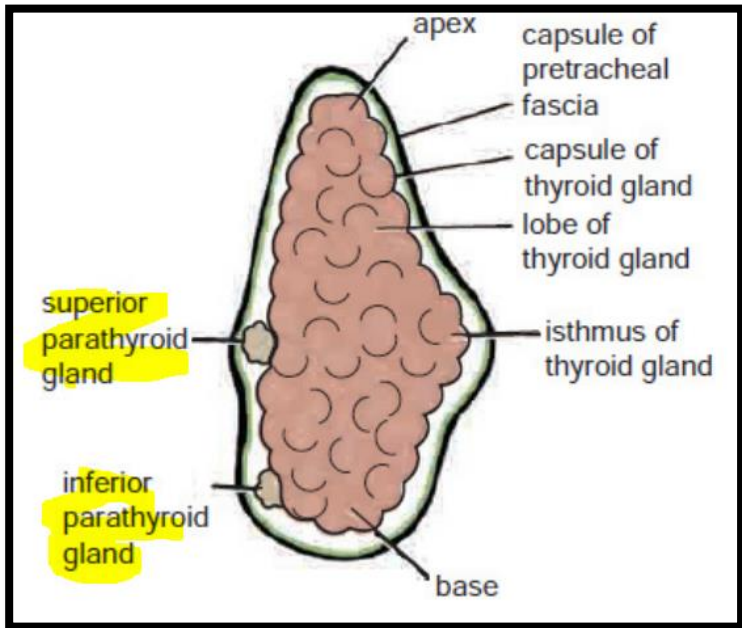
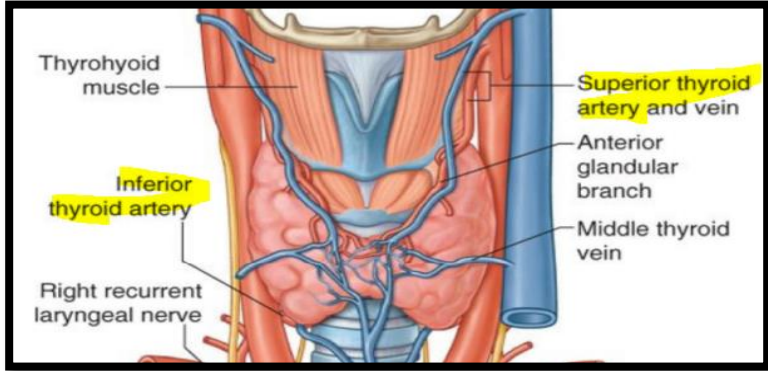






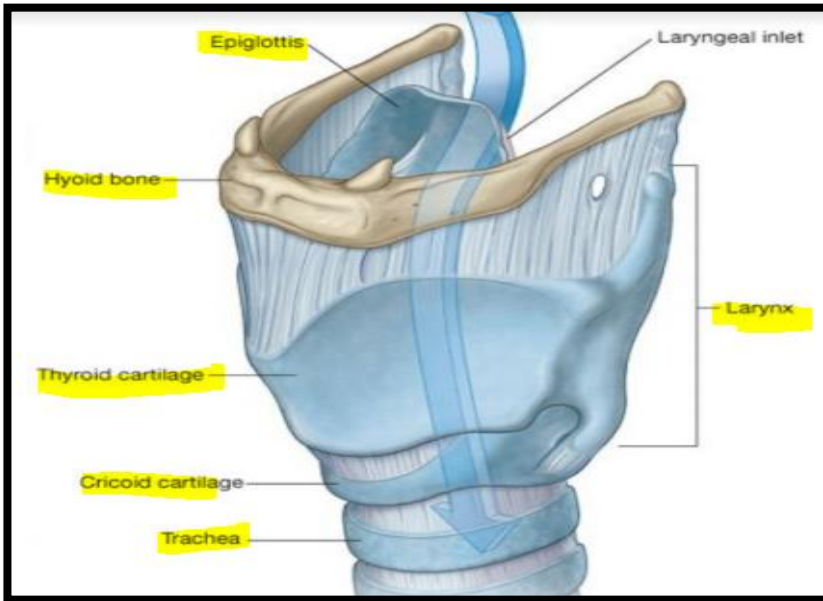


← Thyroid gland blood supply

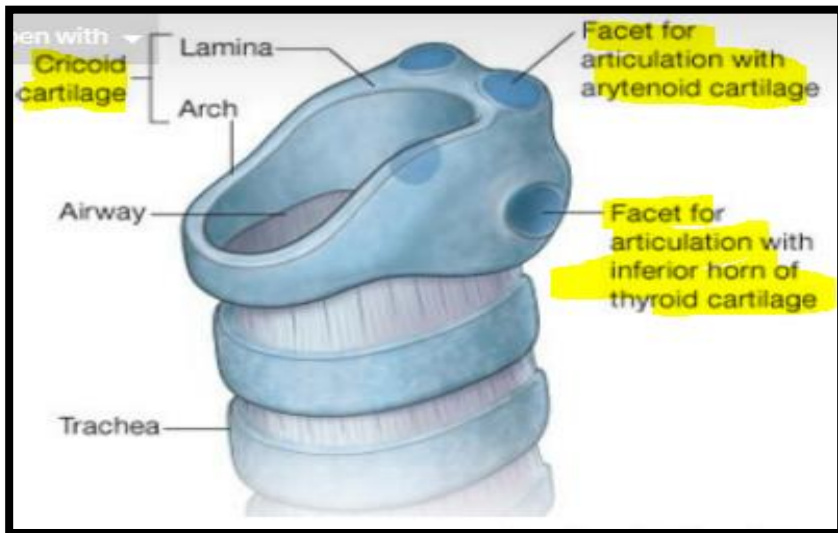


← Parathyroid Glands

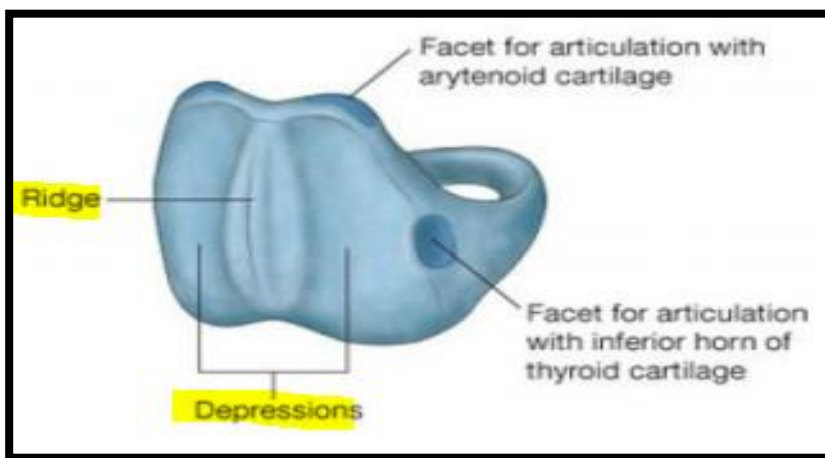
End of AT slides



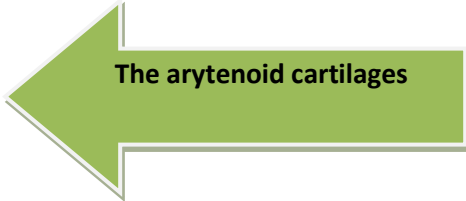
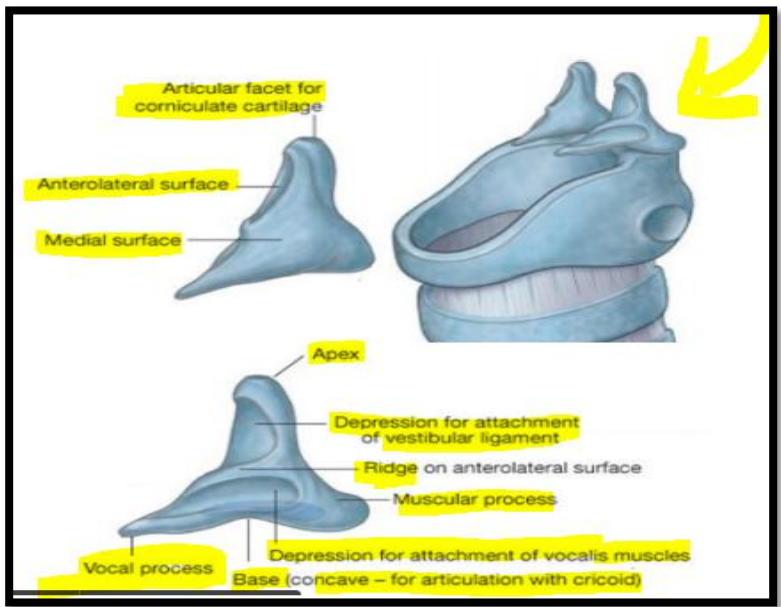
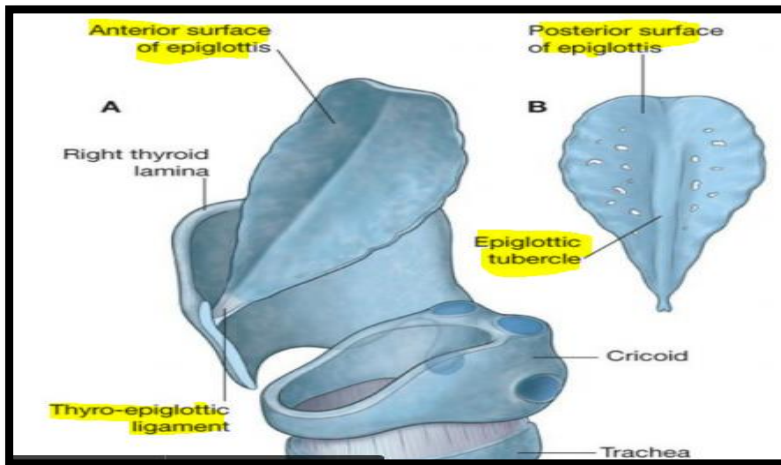
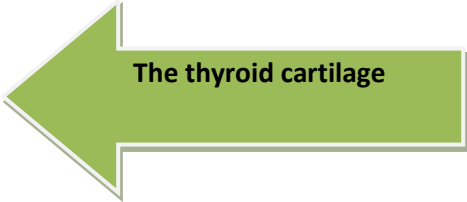
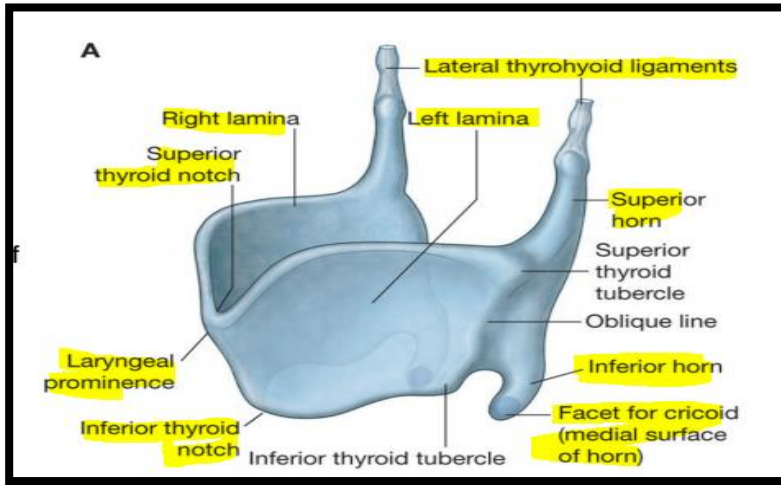
Larynx \laryngeal cartilages



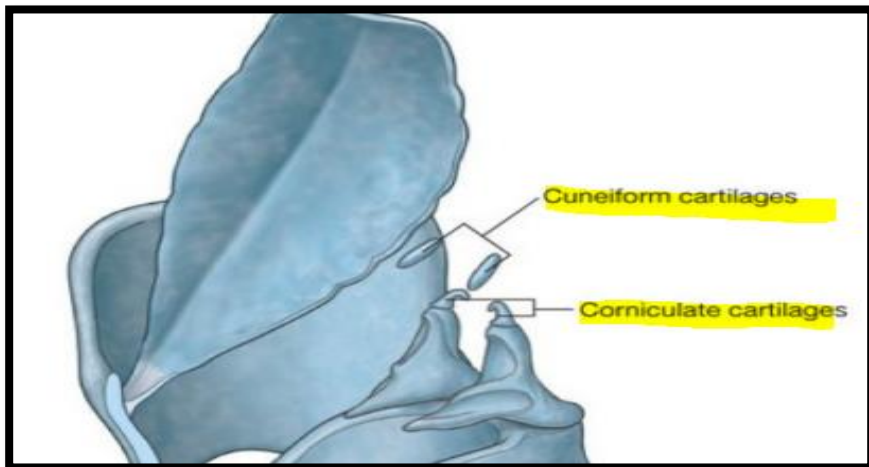
The cricoid cartilage



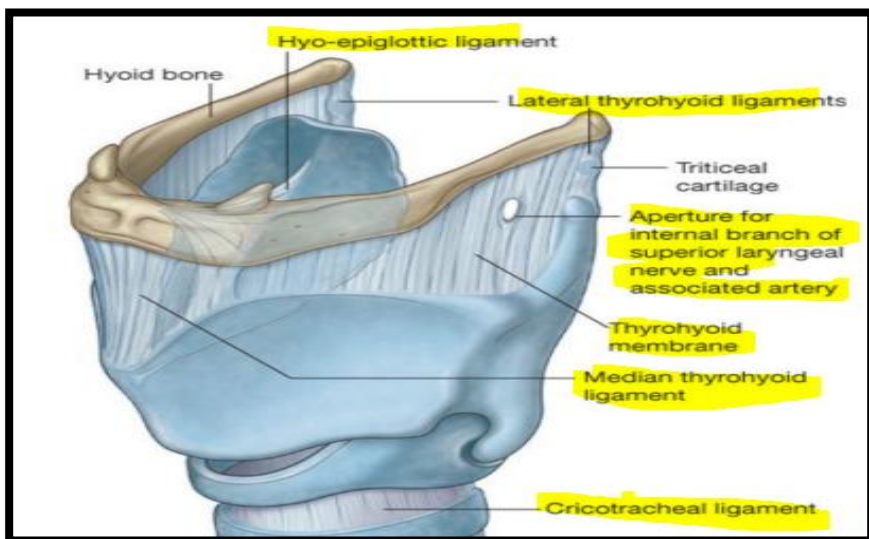
The cricoid cartilage/Posterior surface of lamina:



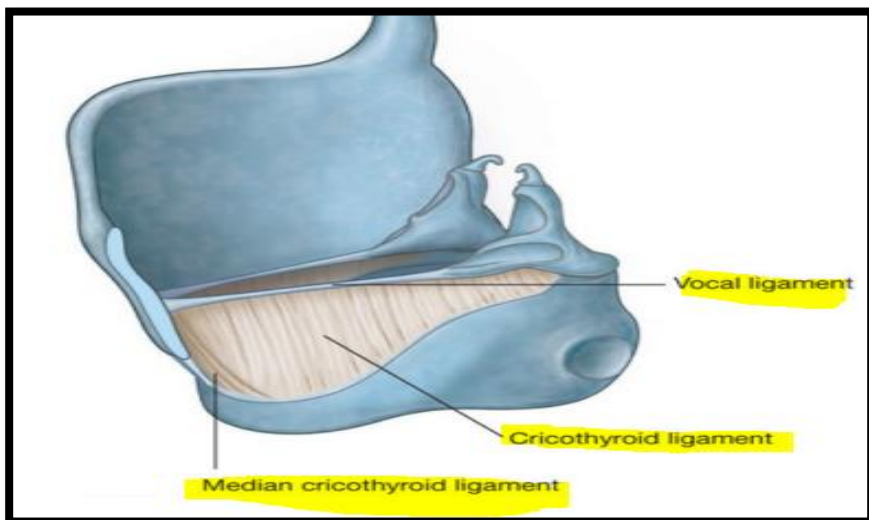




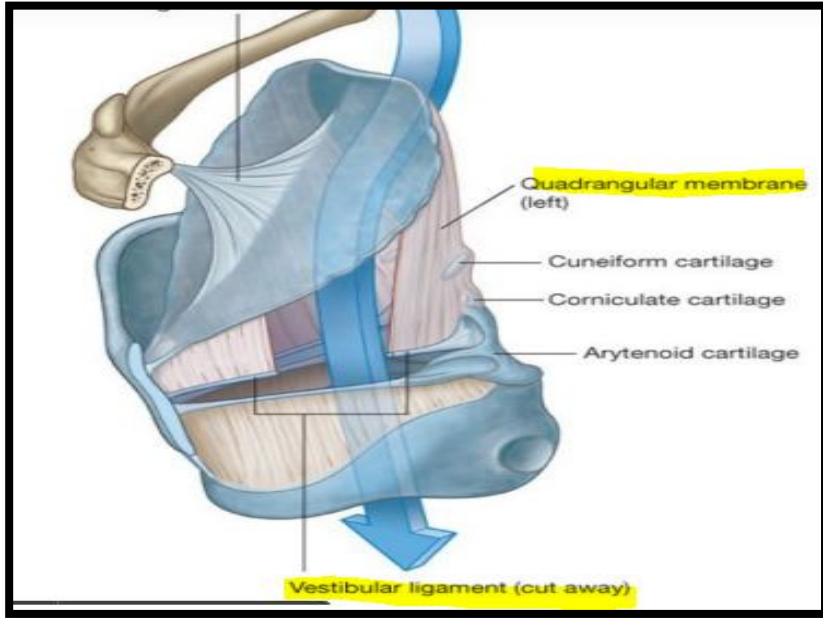
The corniculate and The Cuneiform cartilages



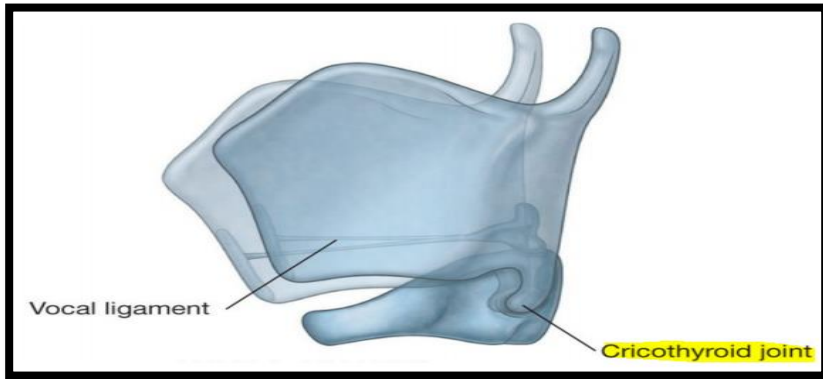
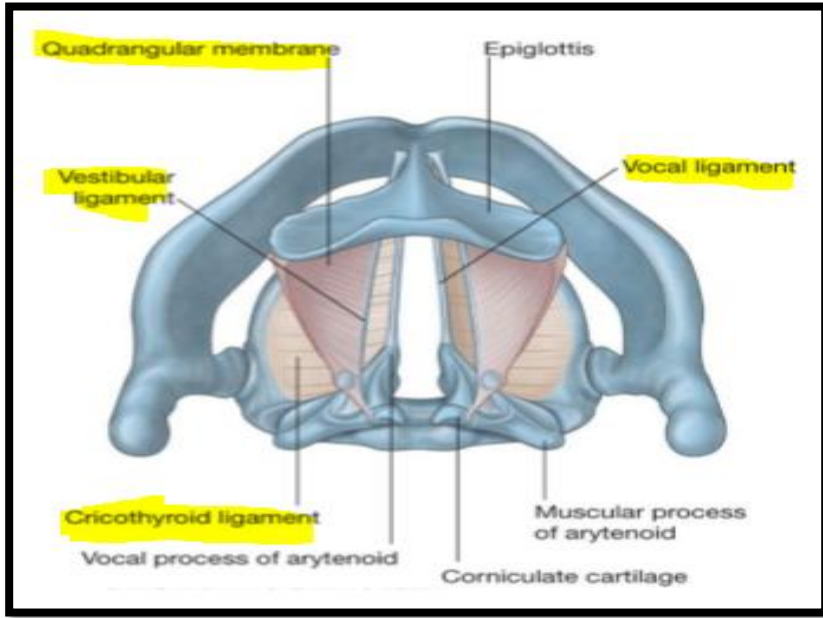
Extrinsic ligaments of layrynx



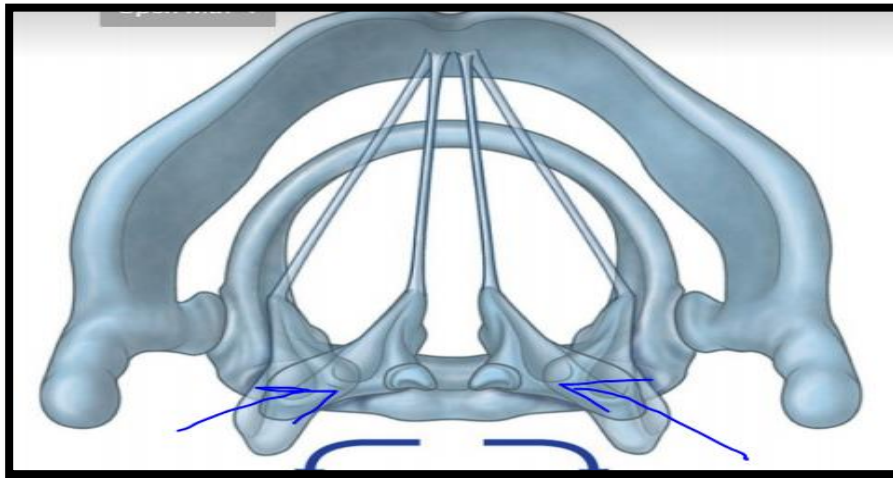
Intrinsic ligaments/  
cricothyroid ligament



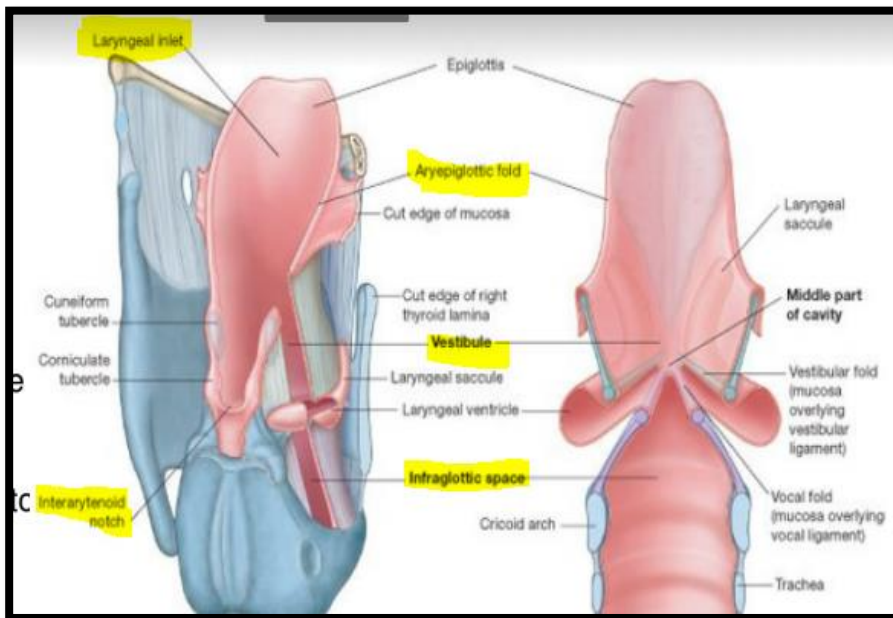
**Intrinsic ligaments/  
 The quadrangular membrane**



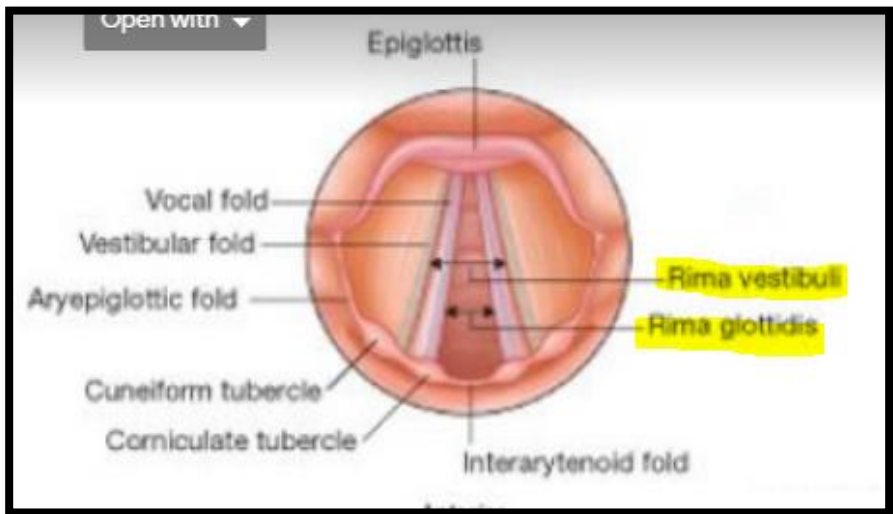
**Cricothyroid joints**



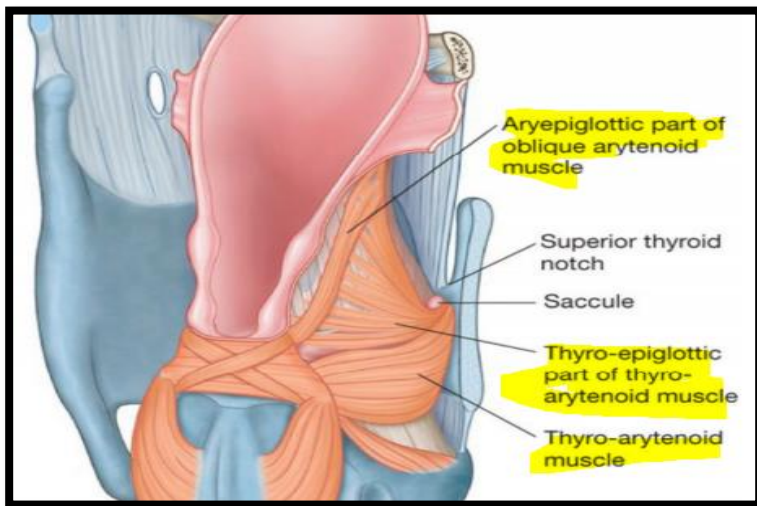
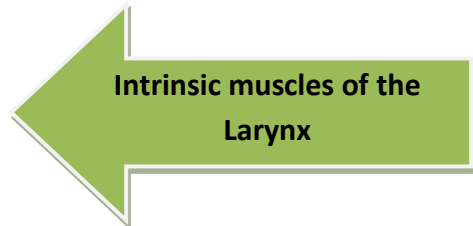
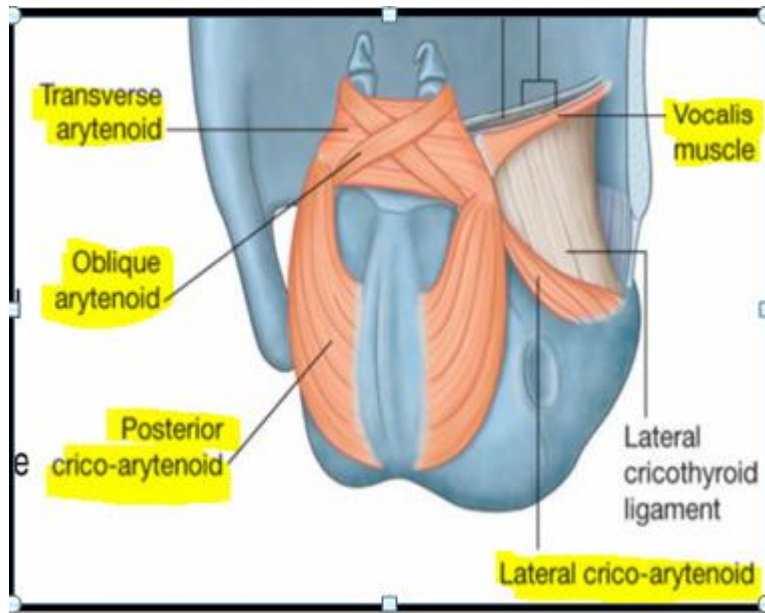
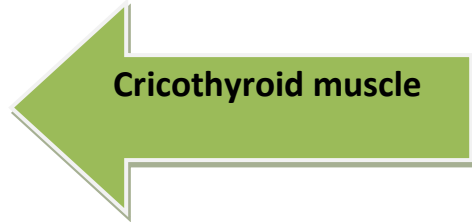
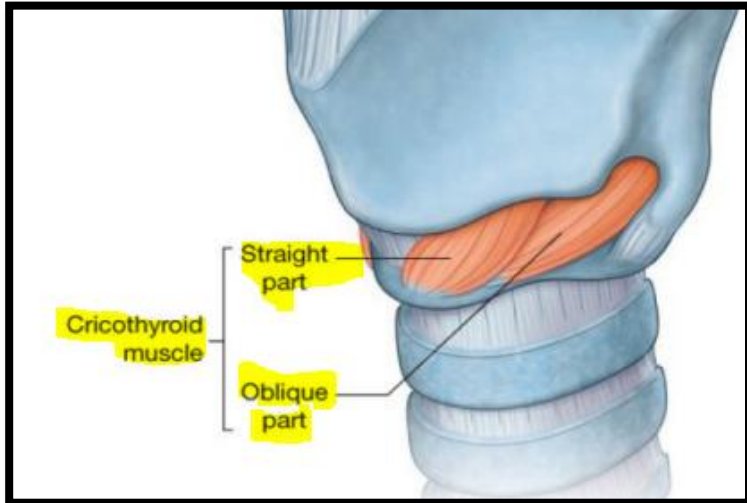
Crico-arytenoid joints

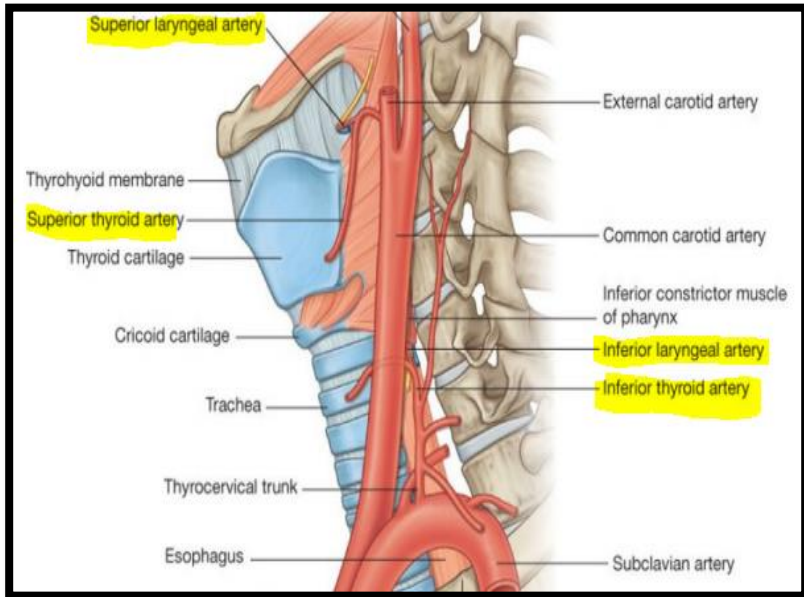


Cavity of the larynx

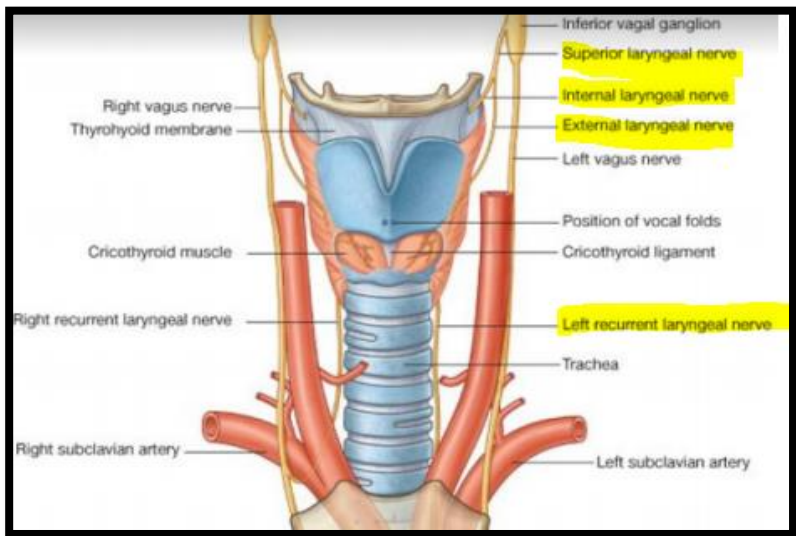
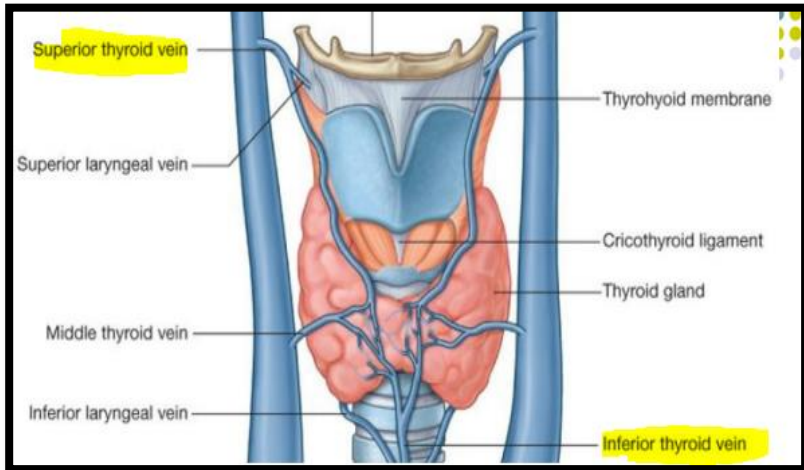




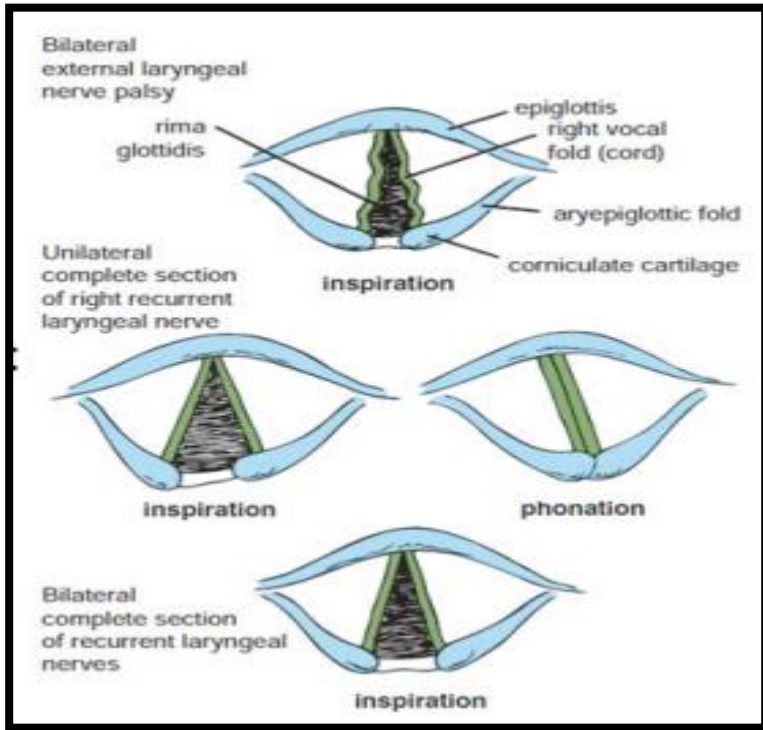




**Blood supply of the larynx**

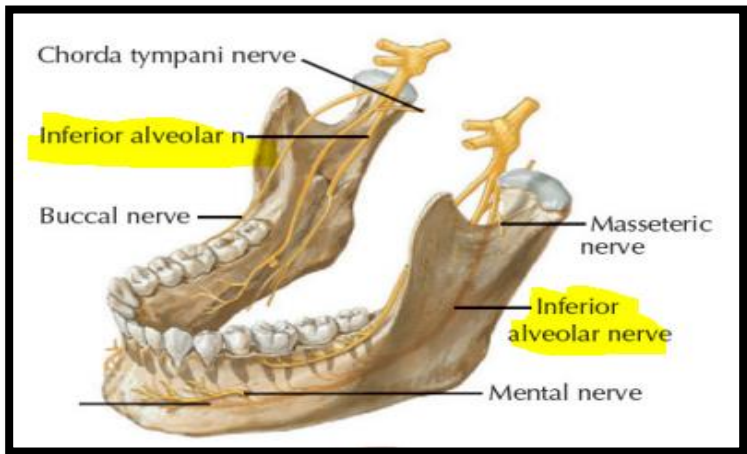


**Nerve supply of the larynx**



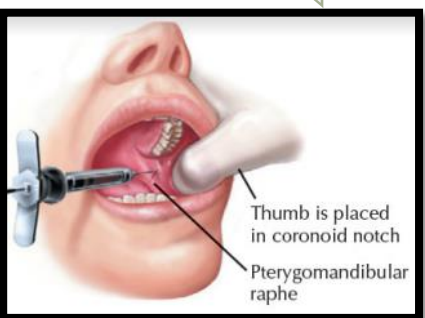
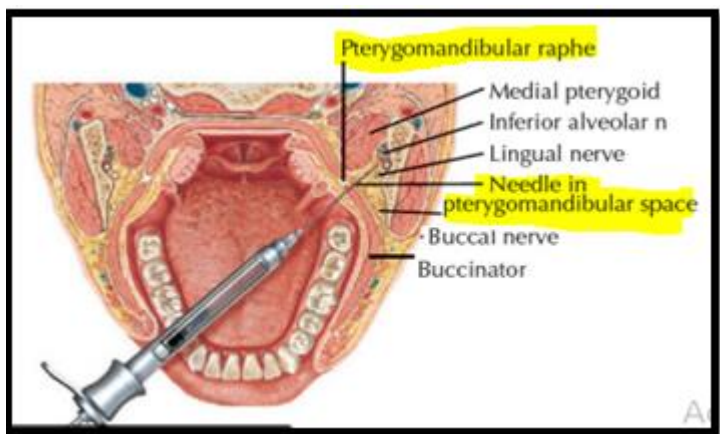
**Movements of the Vocal Folds with Respiration**

End of larynx slides



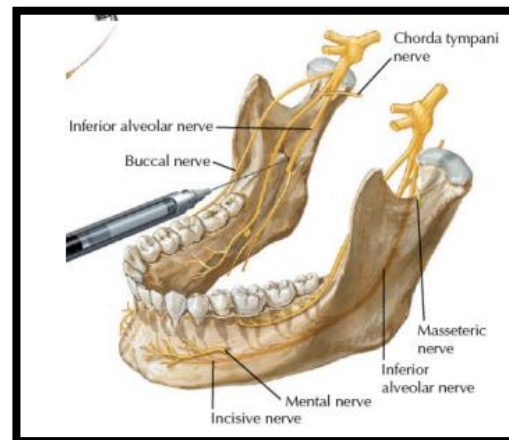
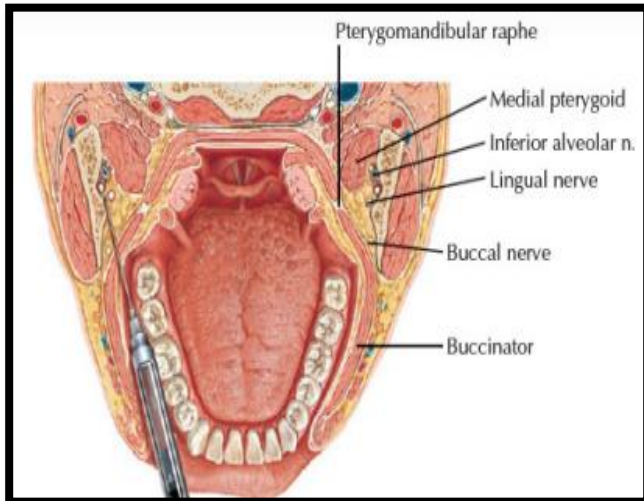
**Inferior alveolar nerve**

**Inferior alveolar nerve block**

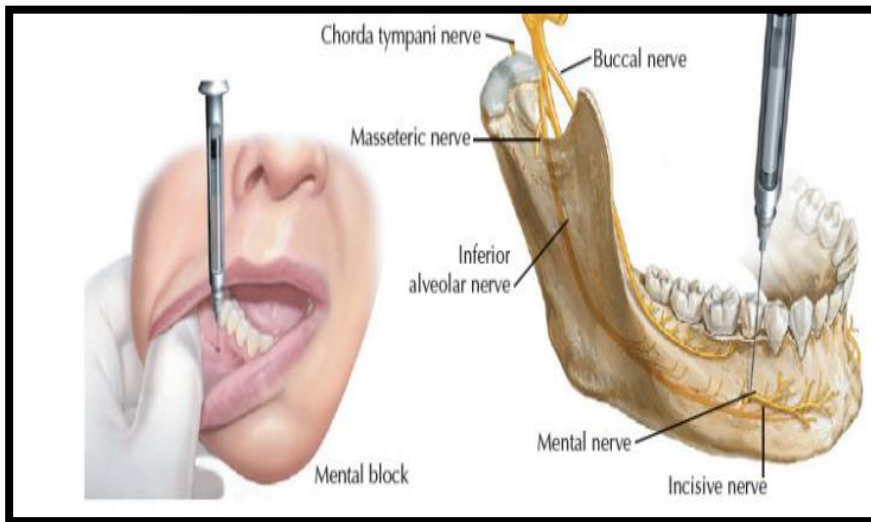




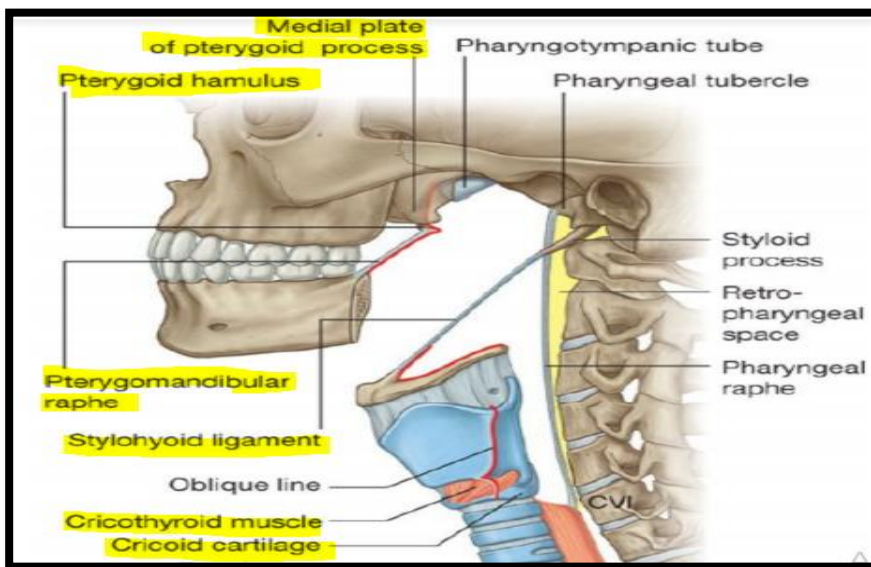
**Akinosi block**

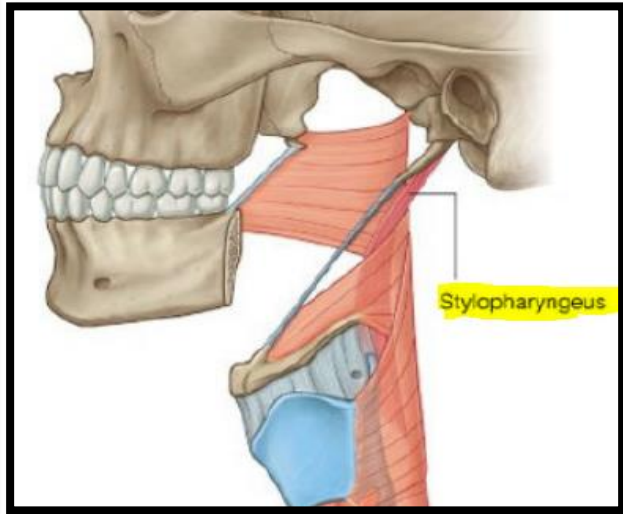
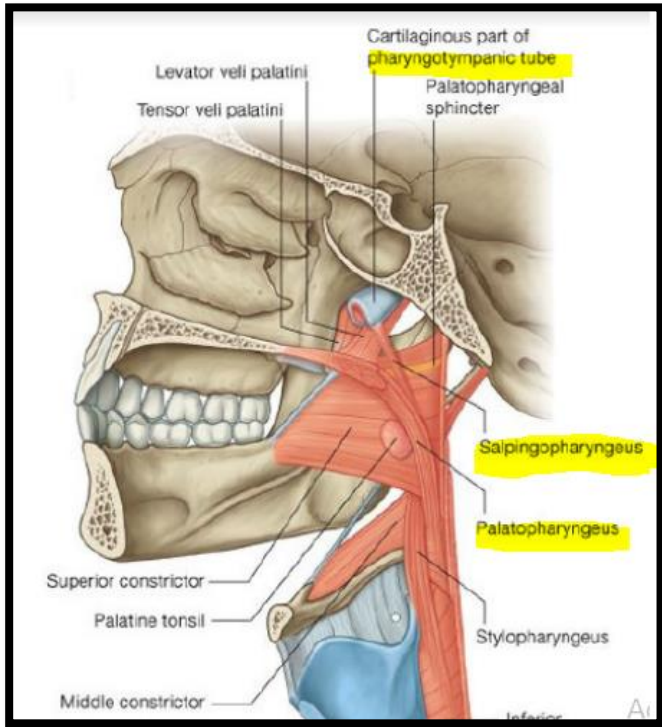
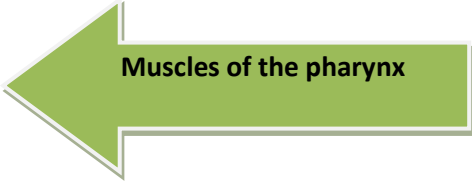
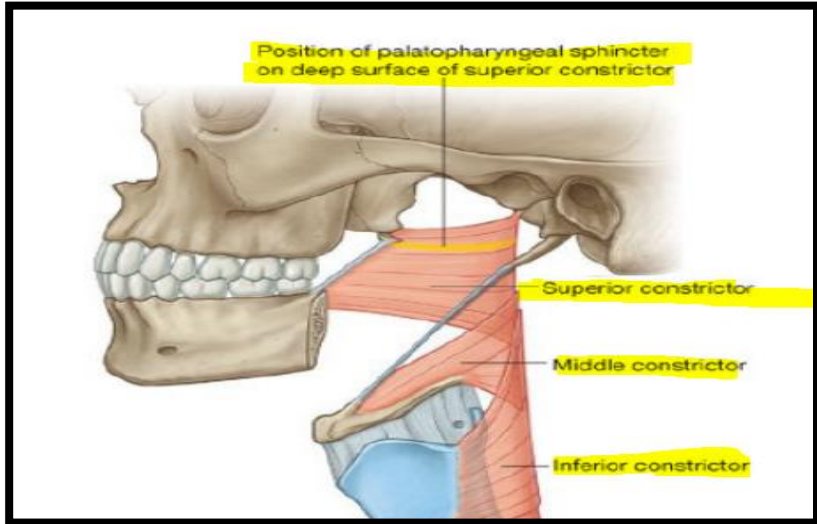


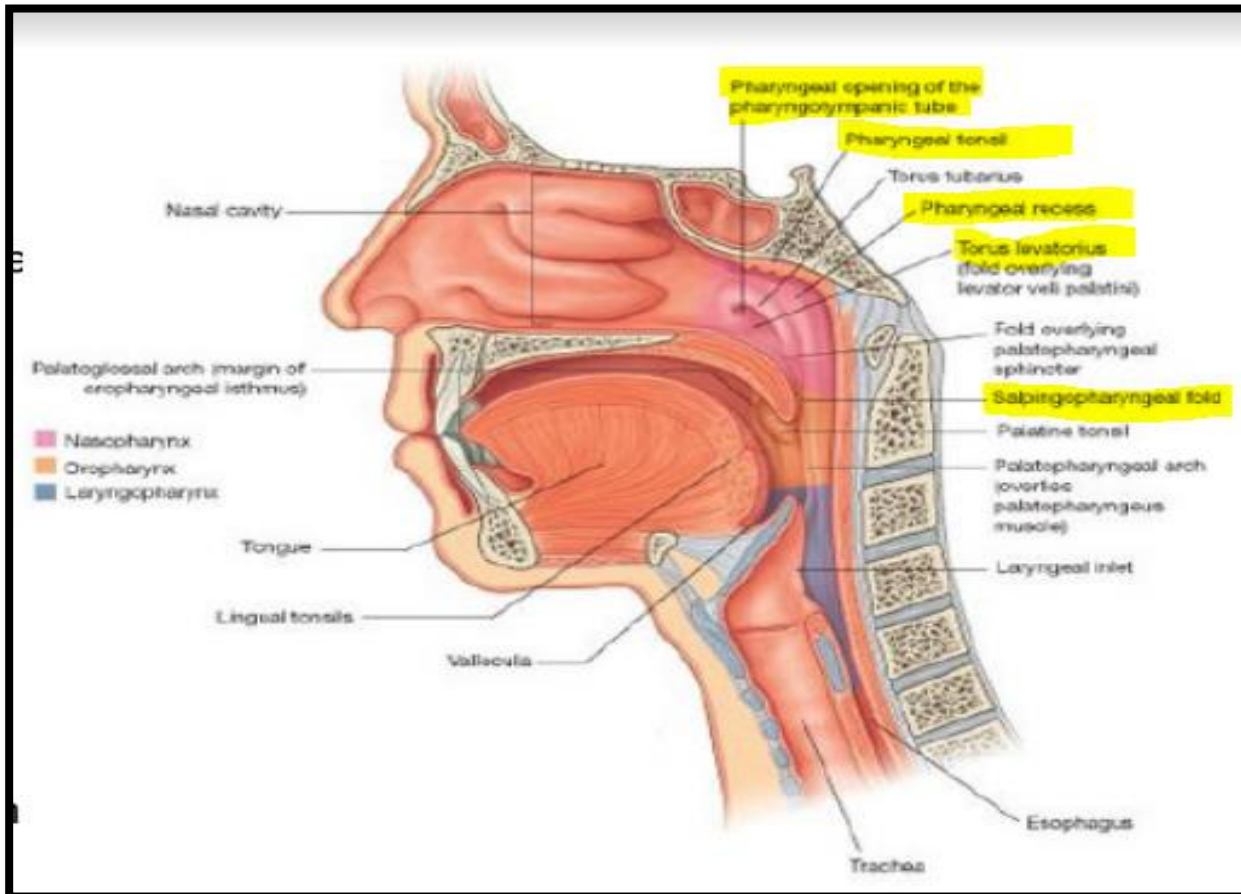
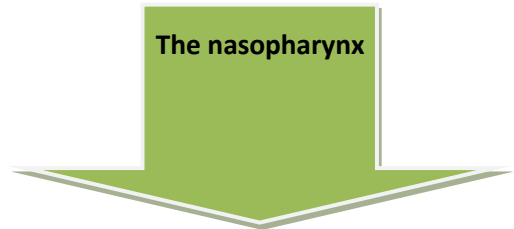
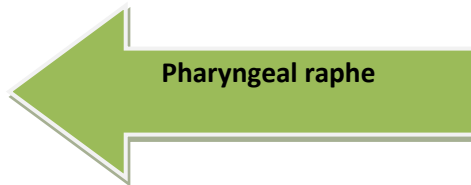
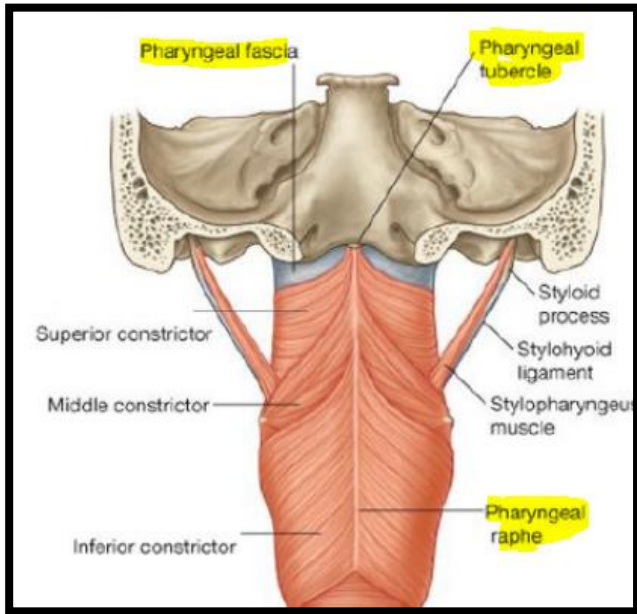
**Mental/incisive nerves block**



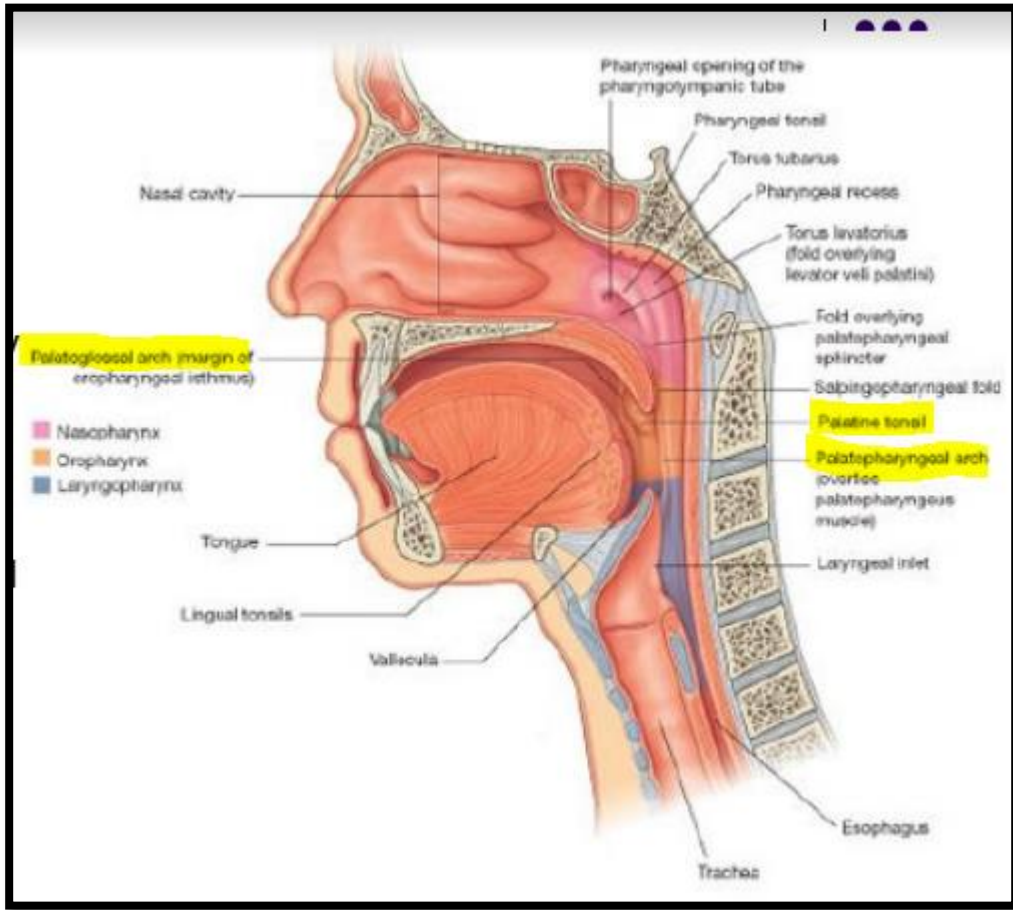
**Attachments of the pharynx**



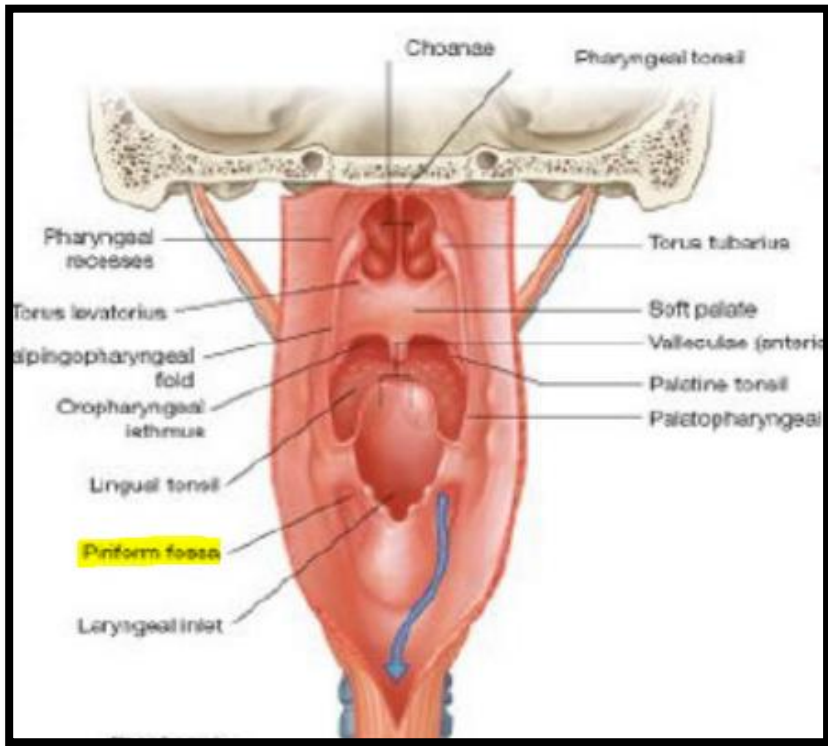




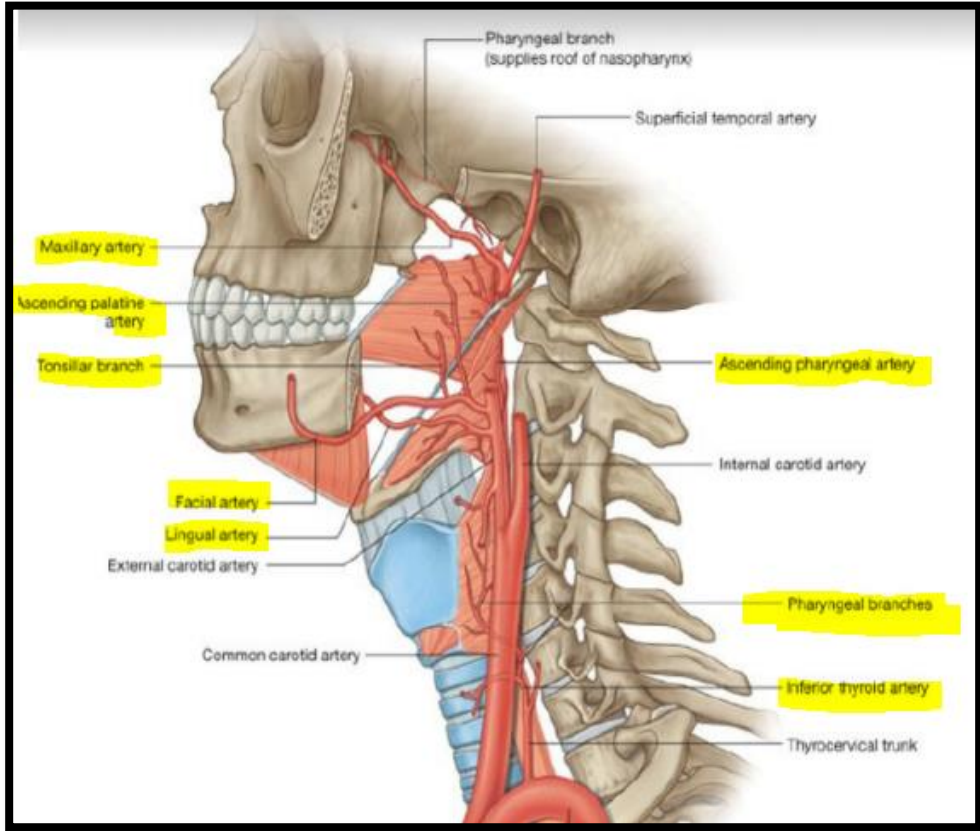




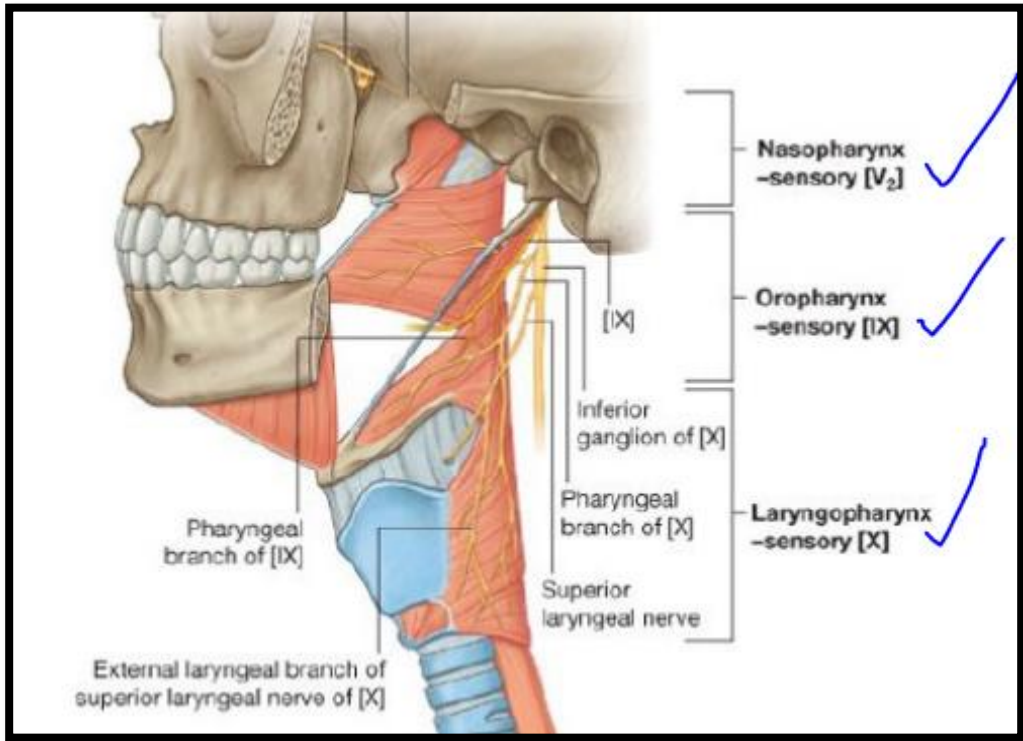
The oropharynx



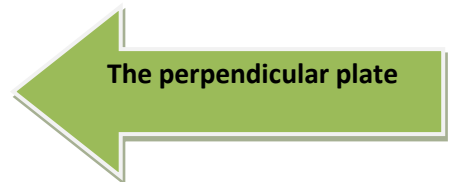
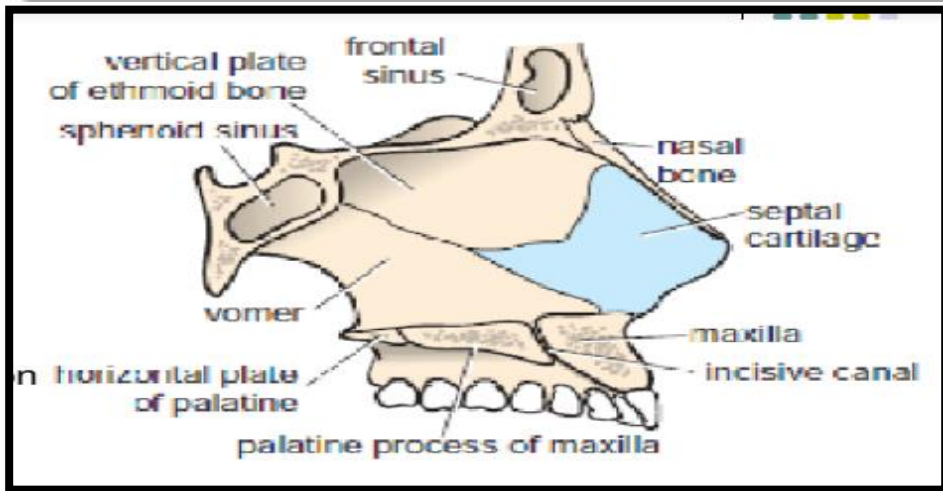
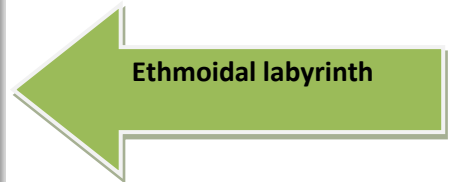
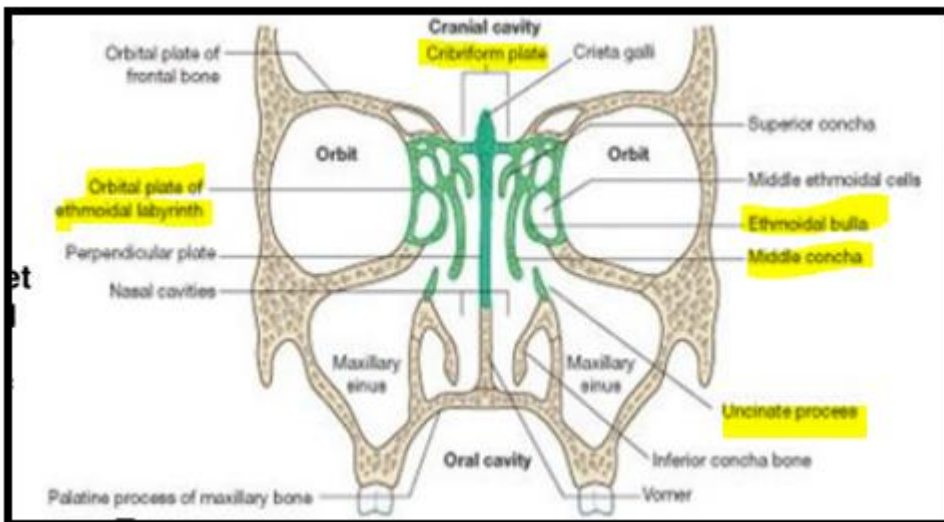
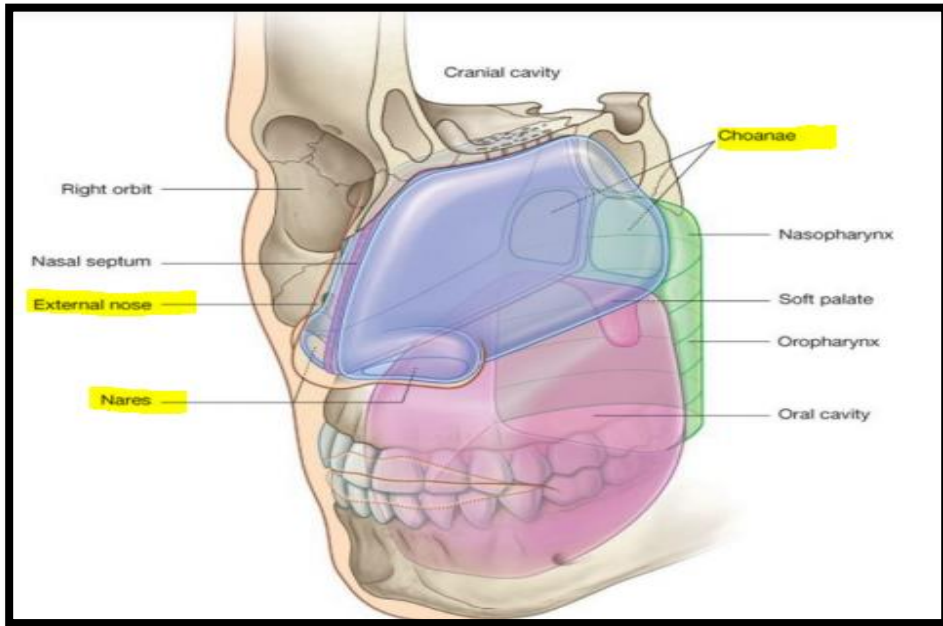
Laryngopharynx/  
Piriform fossae



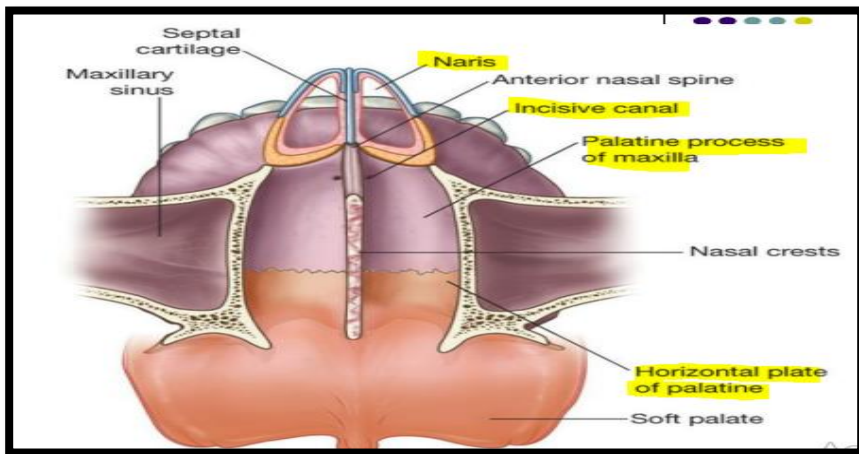
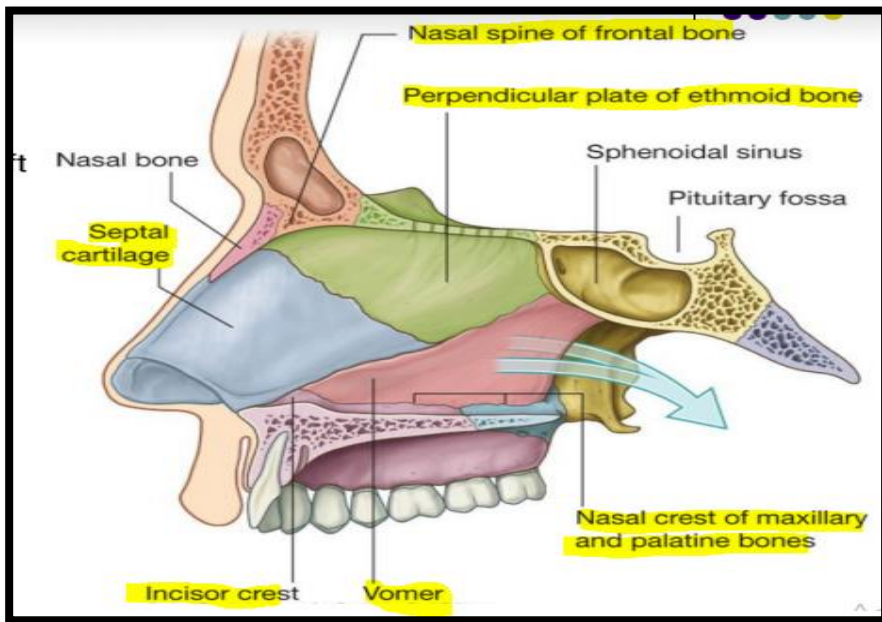
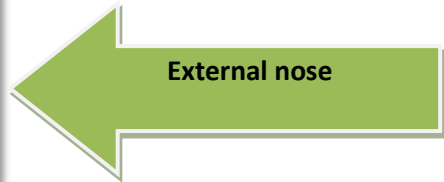
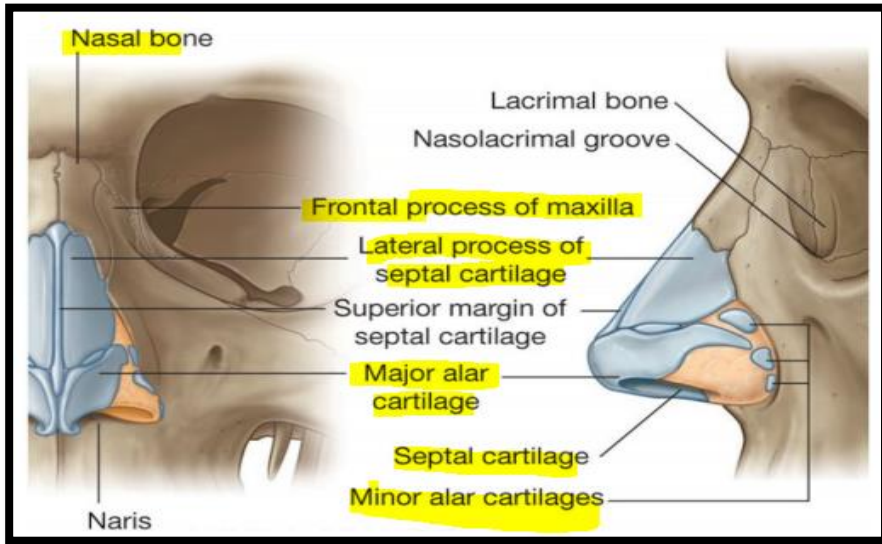
← Nerve supply of the pharynx

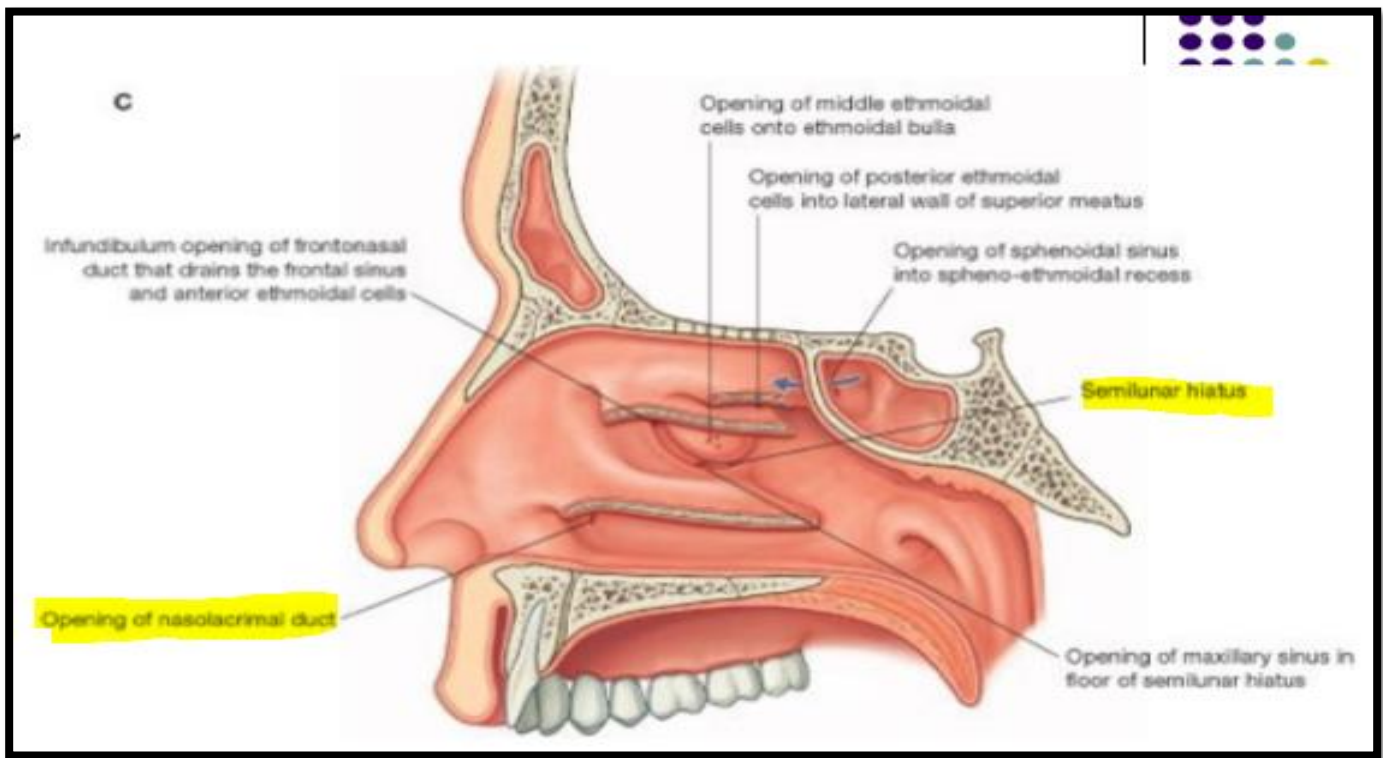
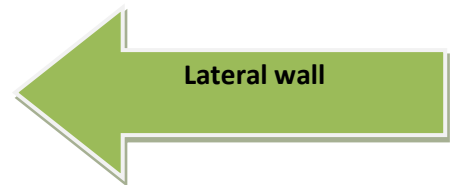
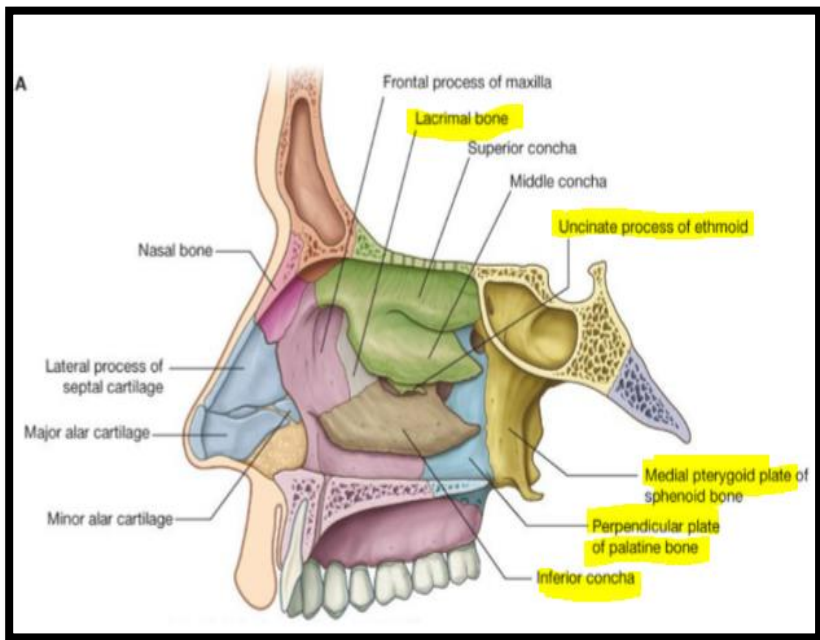


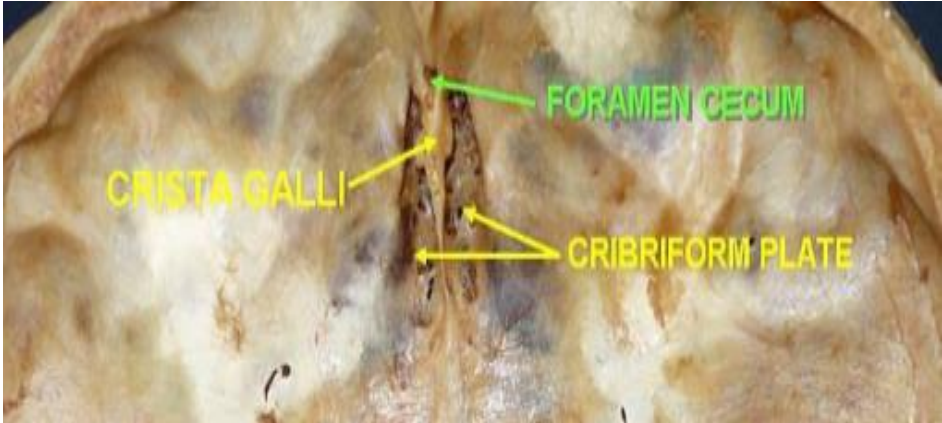
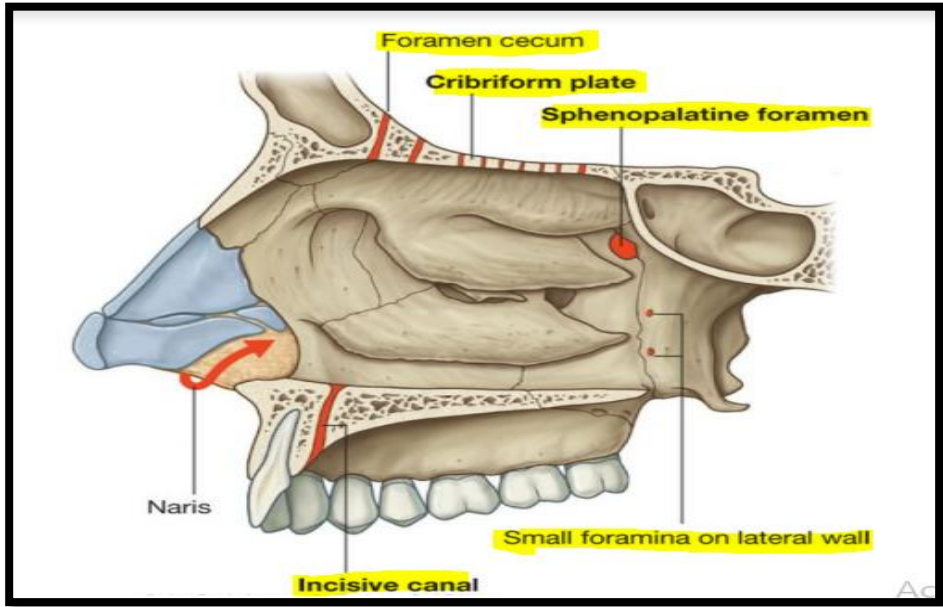
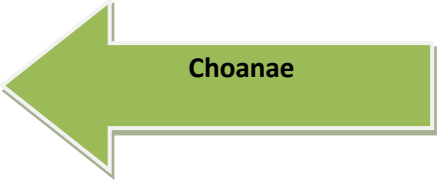
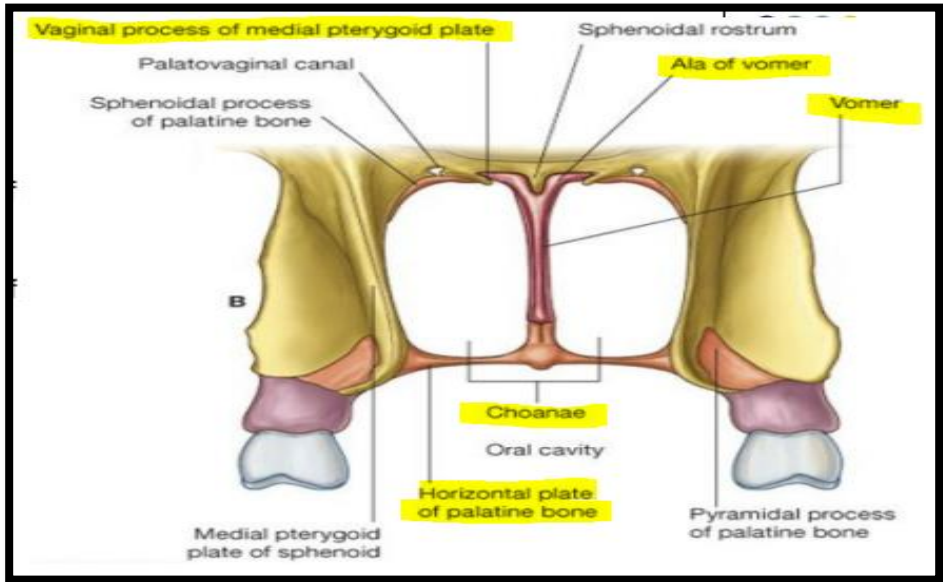
End of pharynx slides



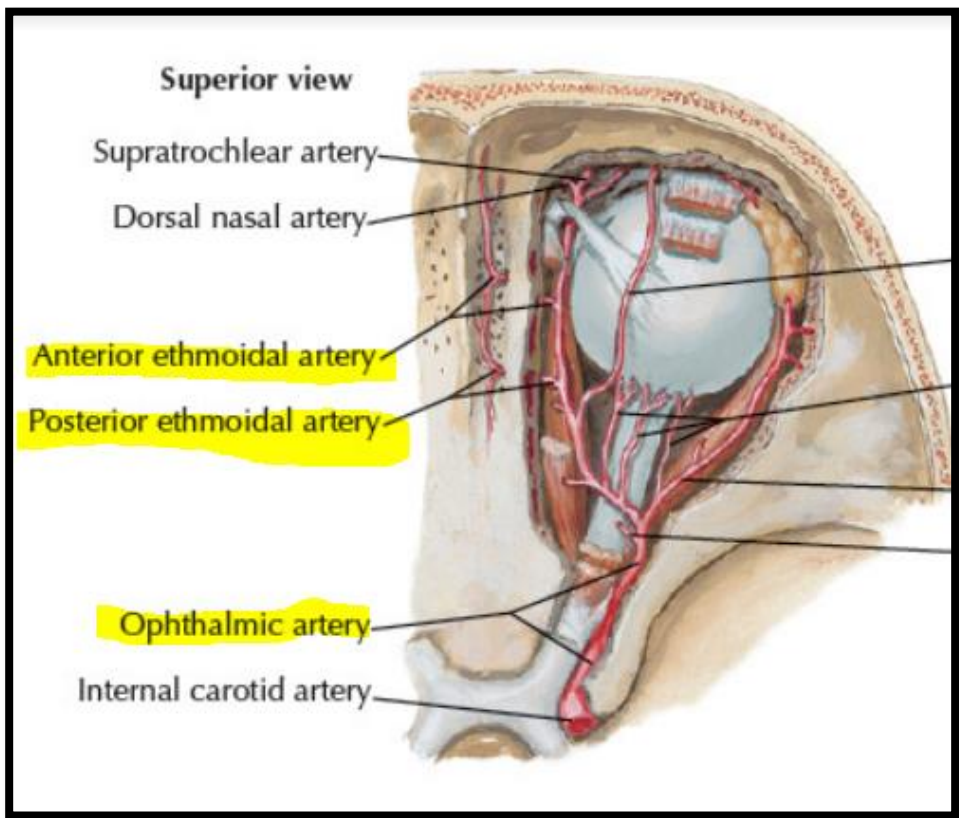
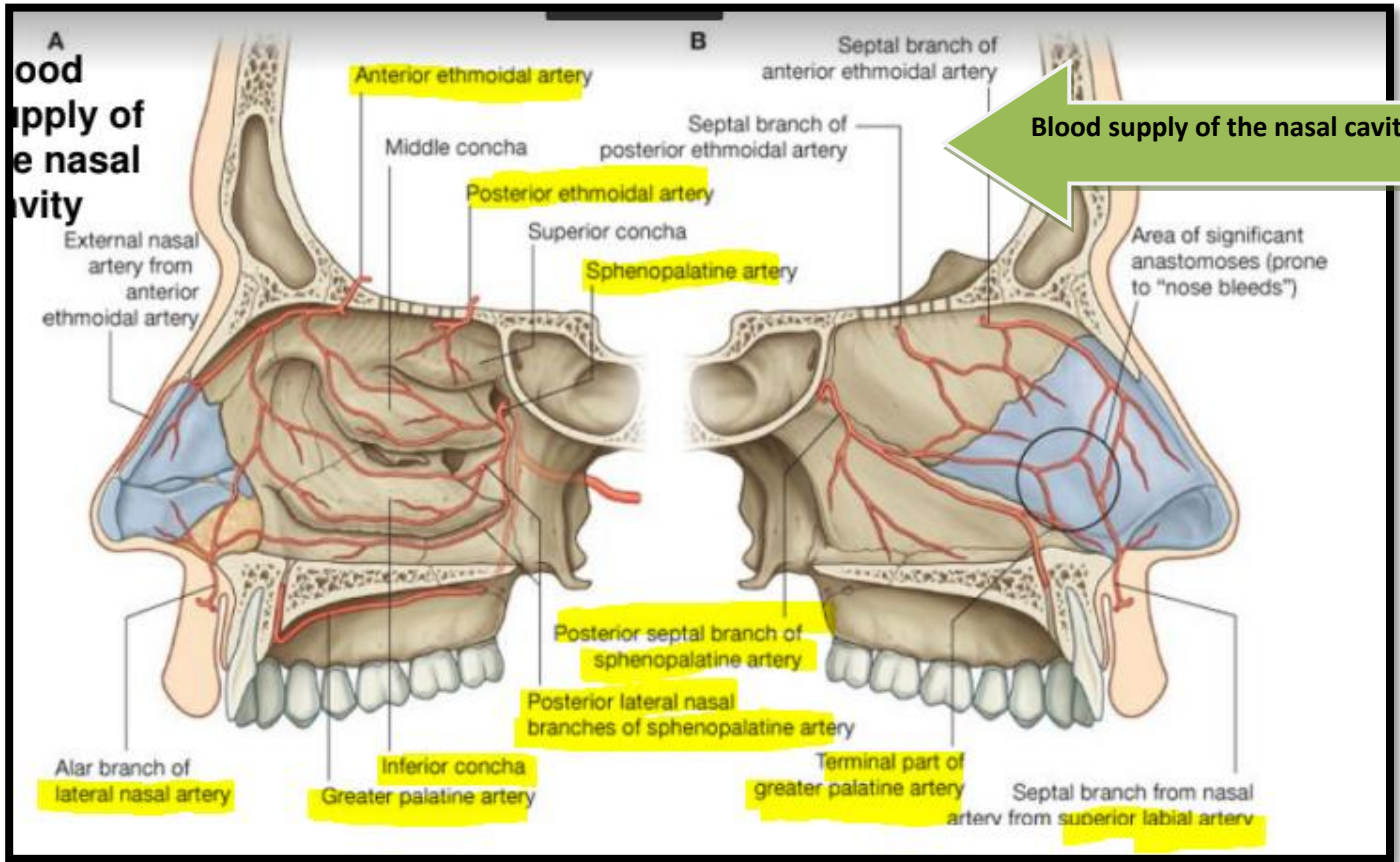




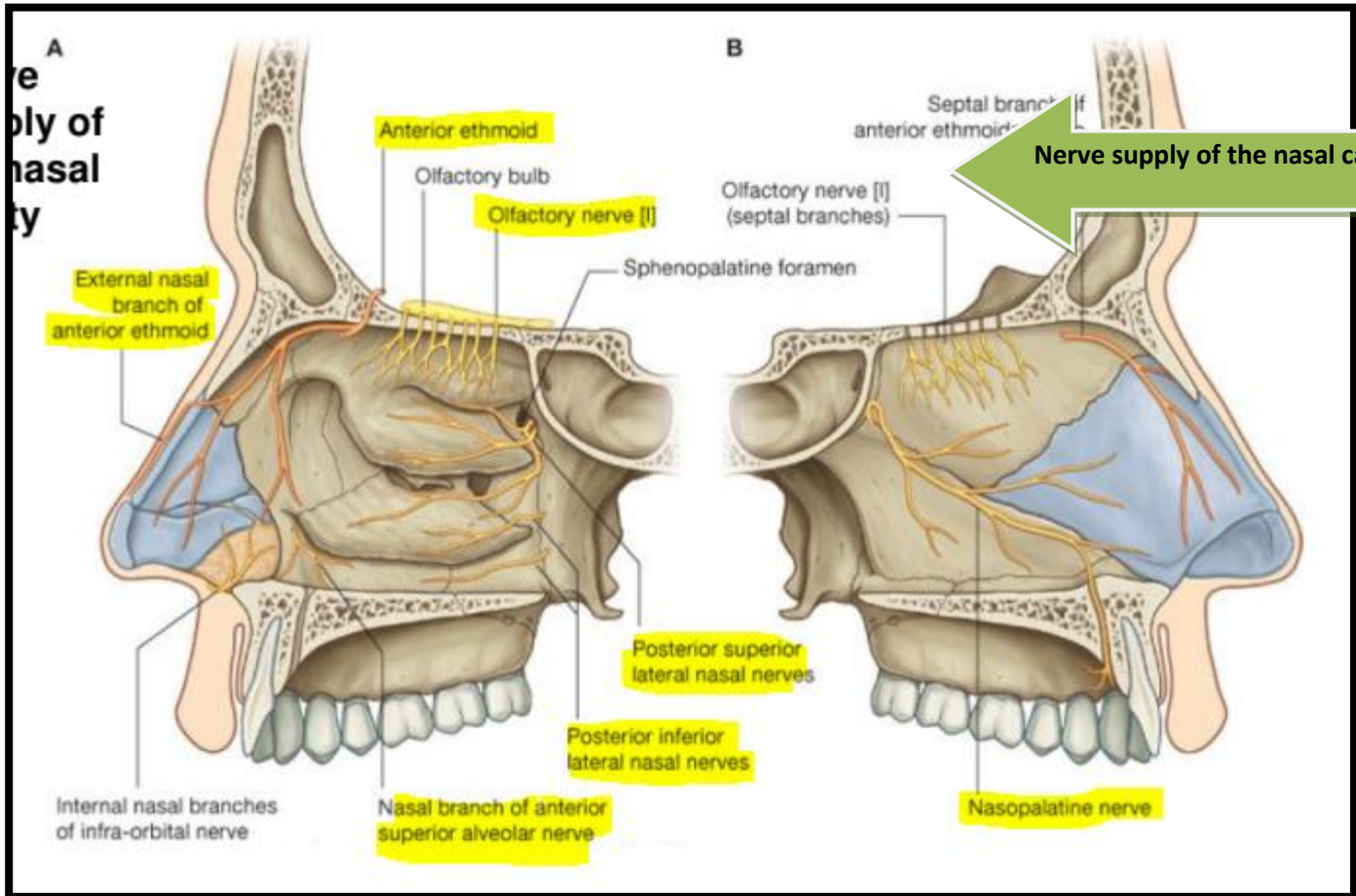




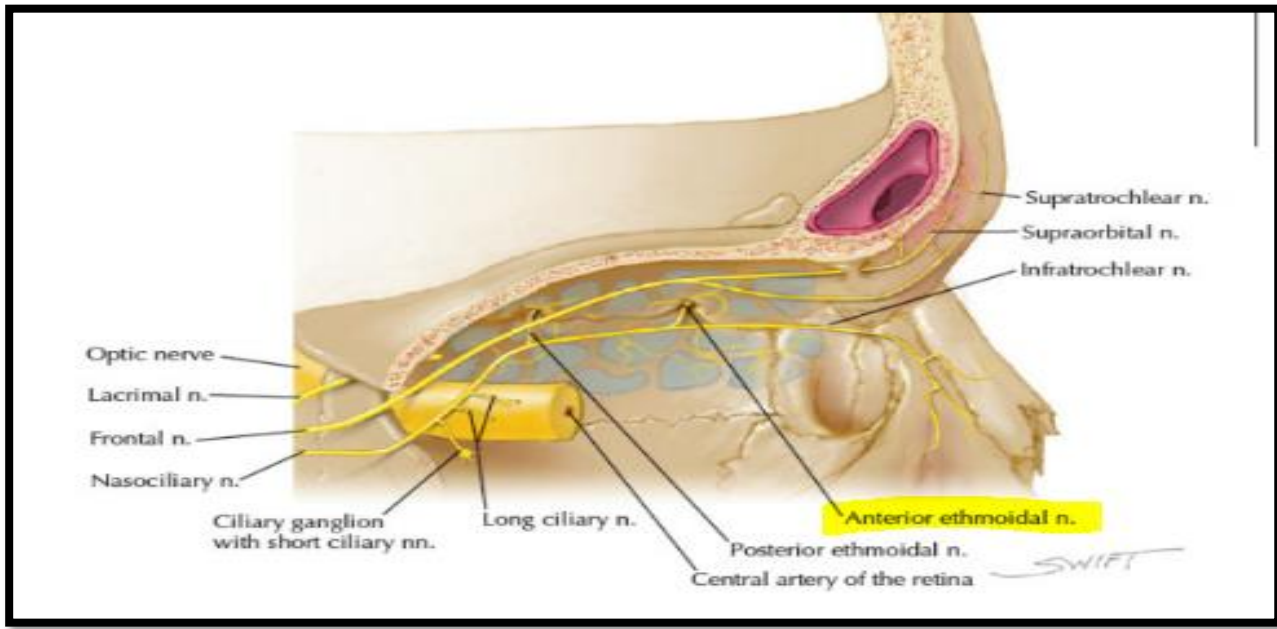


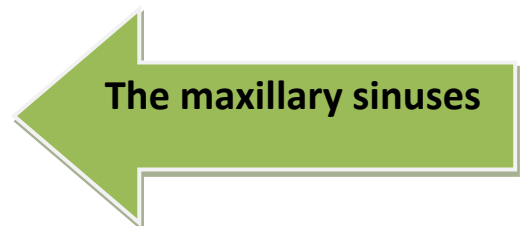
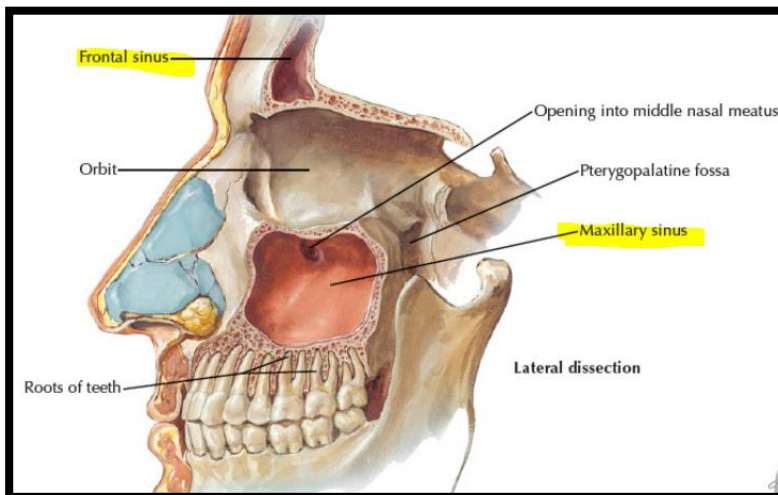
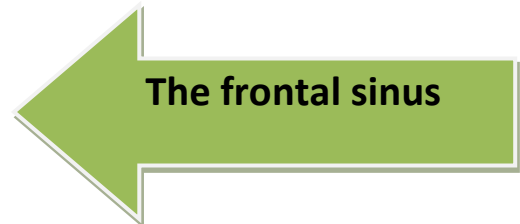
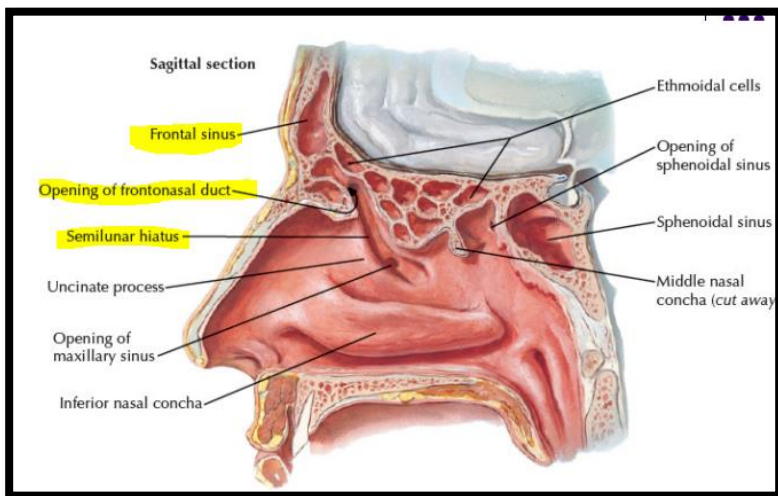
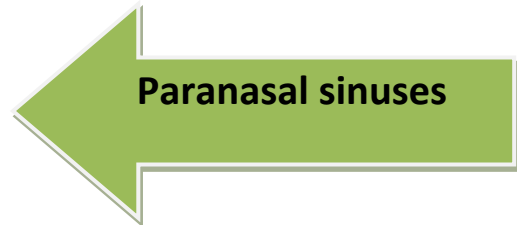
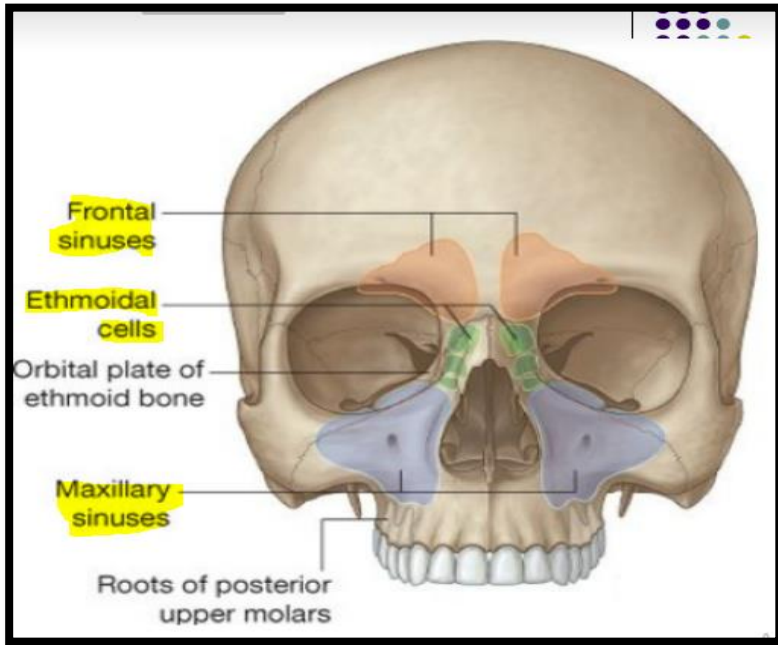


**Supply of nasal cavity**

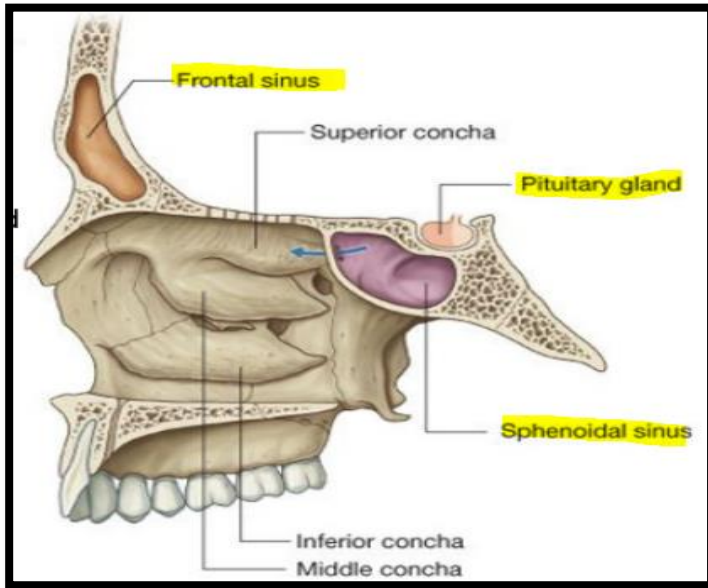


Nerve supply of the nasal cavity



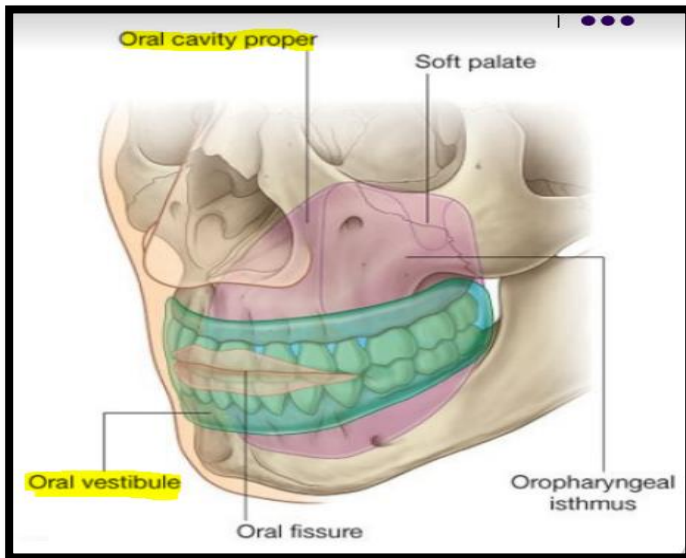




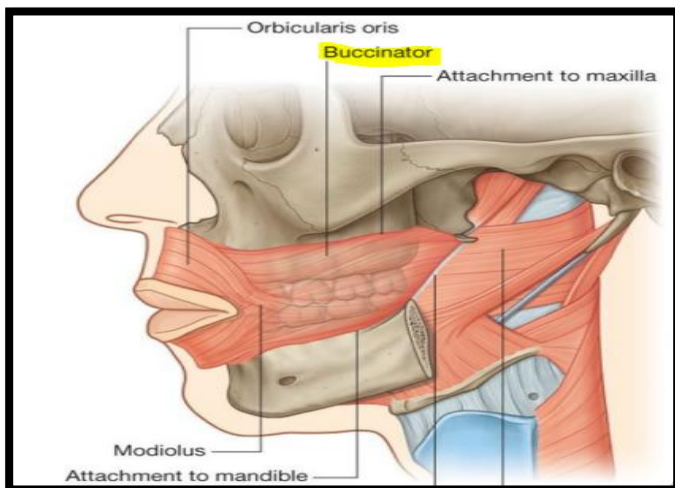


The sphenoidal sinuses

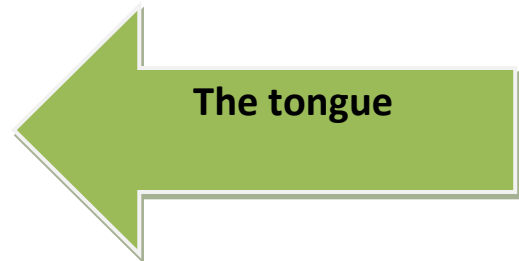
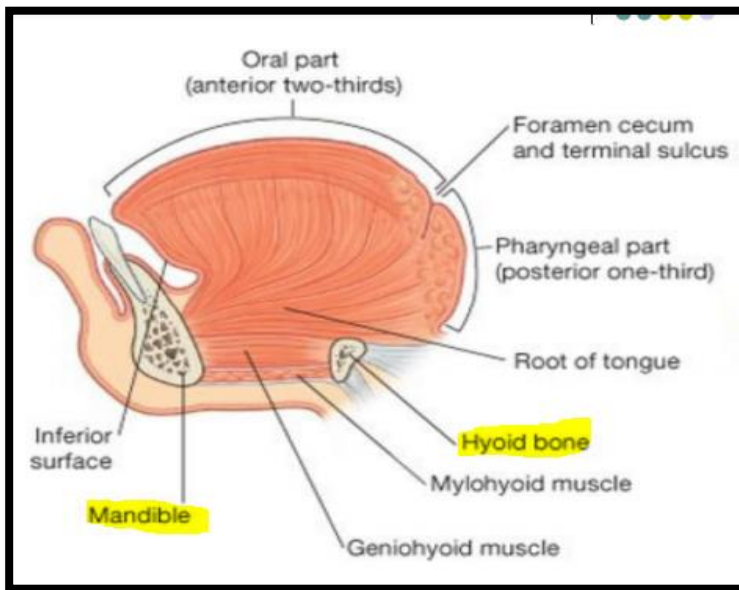
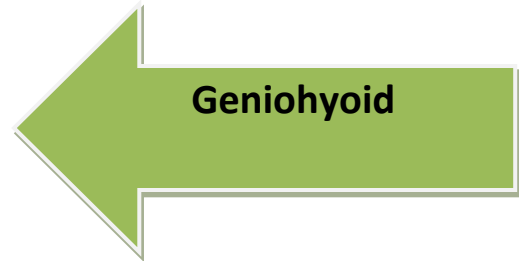
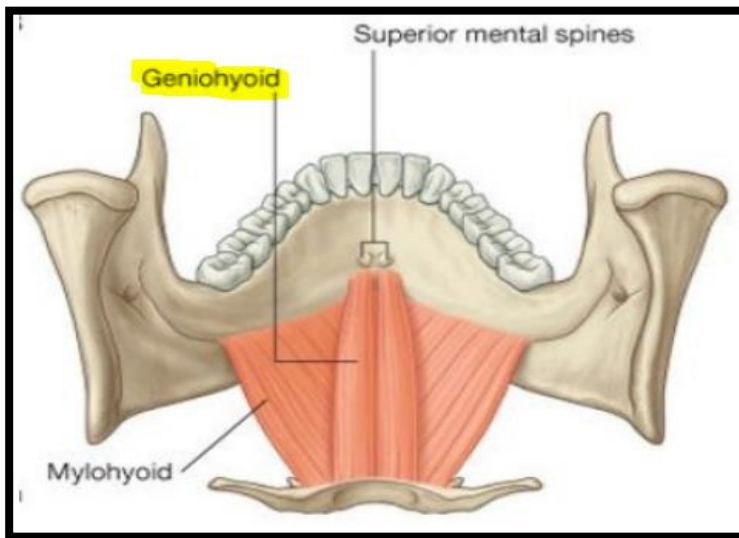
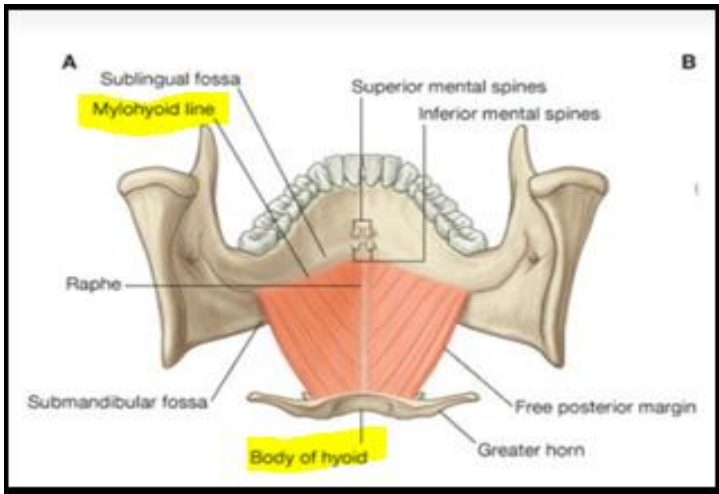
End of paranasal slides

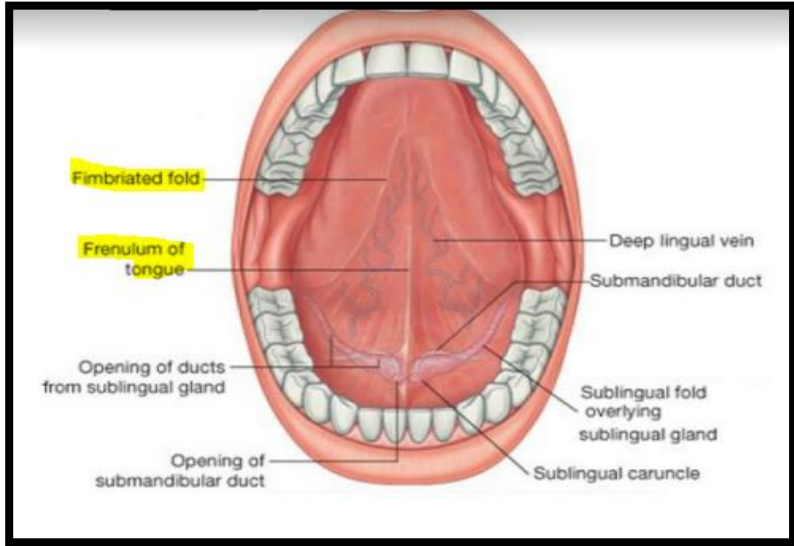


ORAL CAVITY

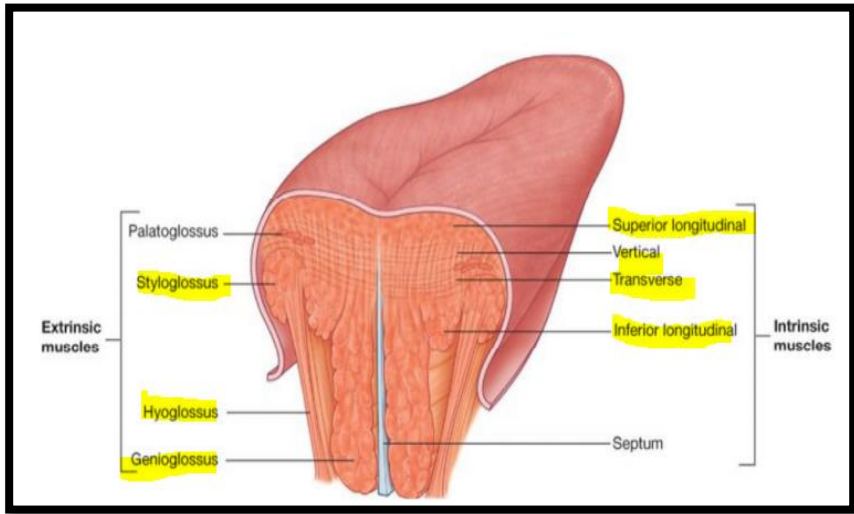


the cheeks

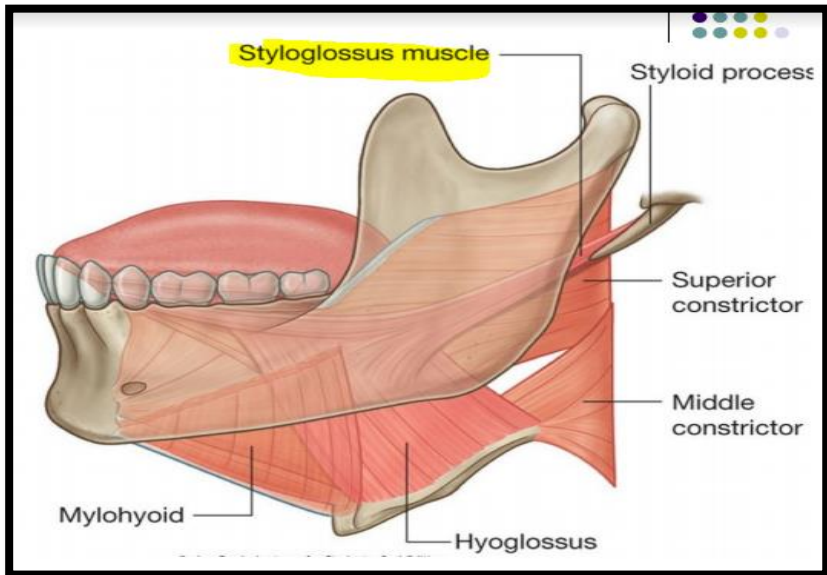




Inferior surface of tongue

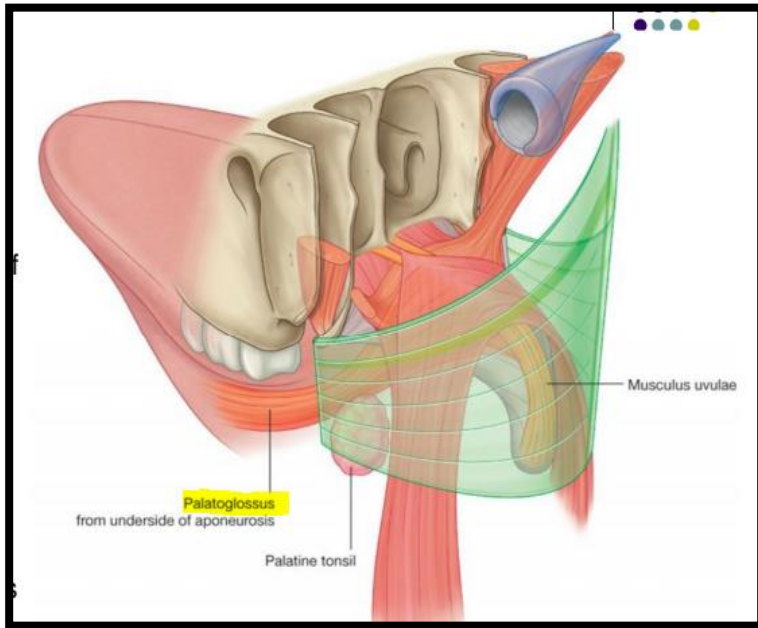


muscles of the tongue

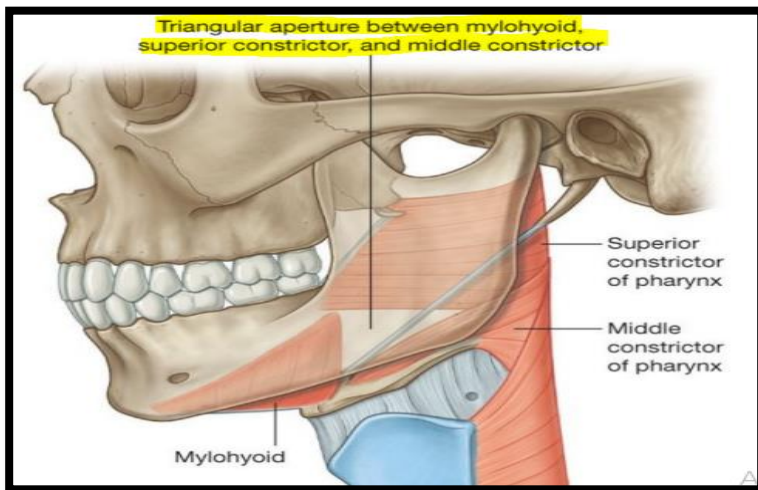


Styloglossus

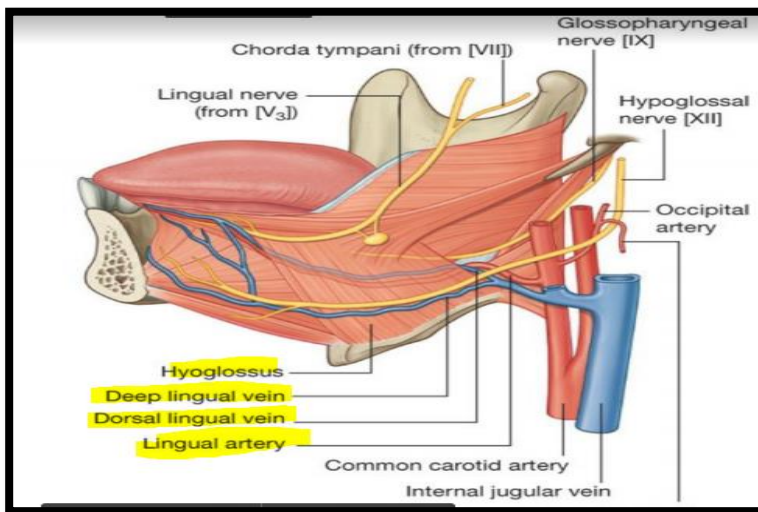




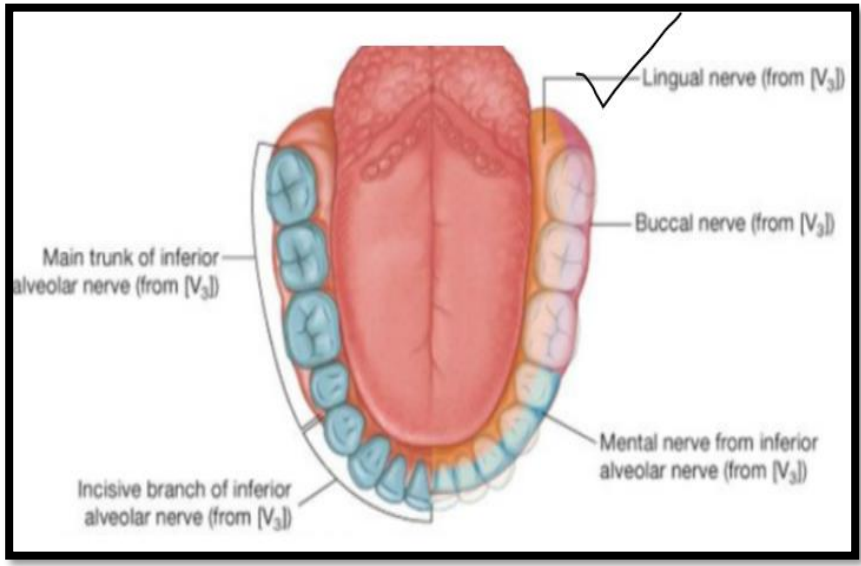
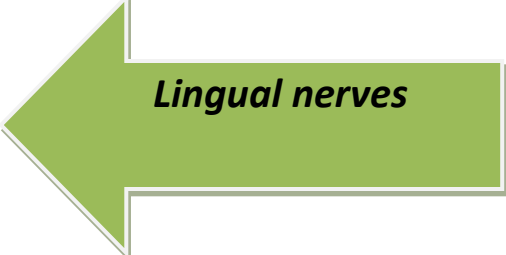
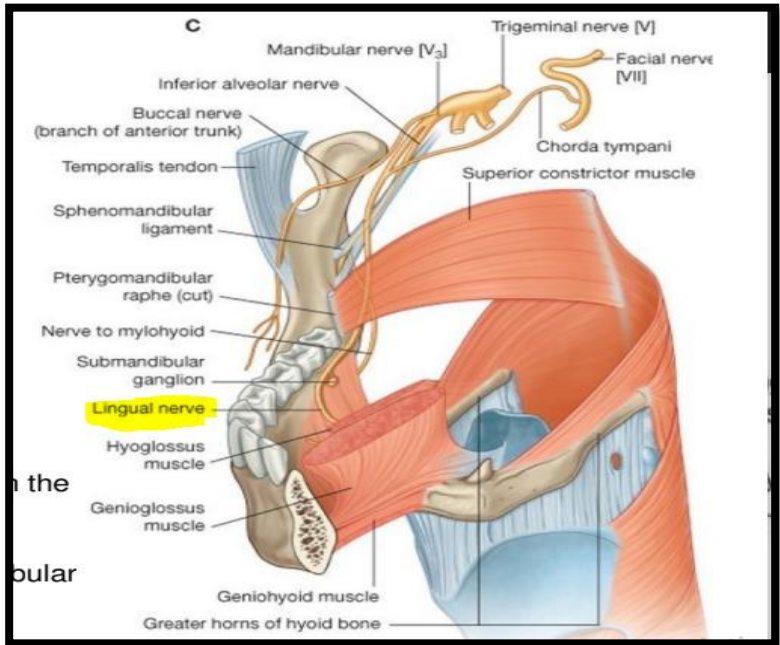
← **Palatoglossus**

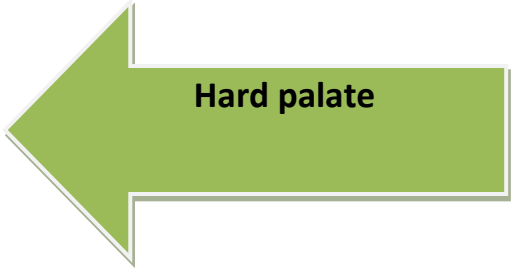
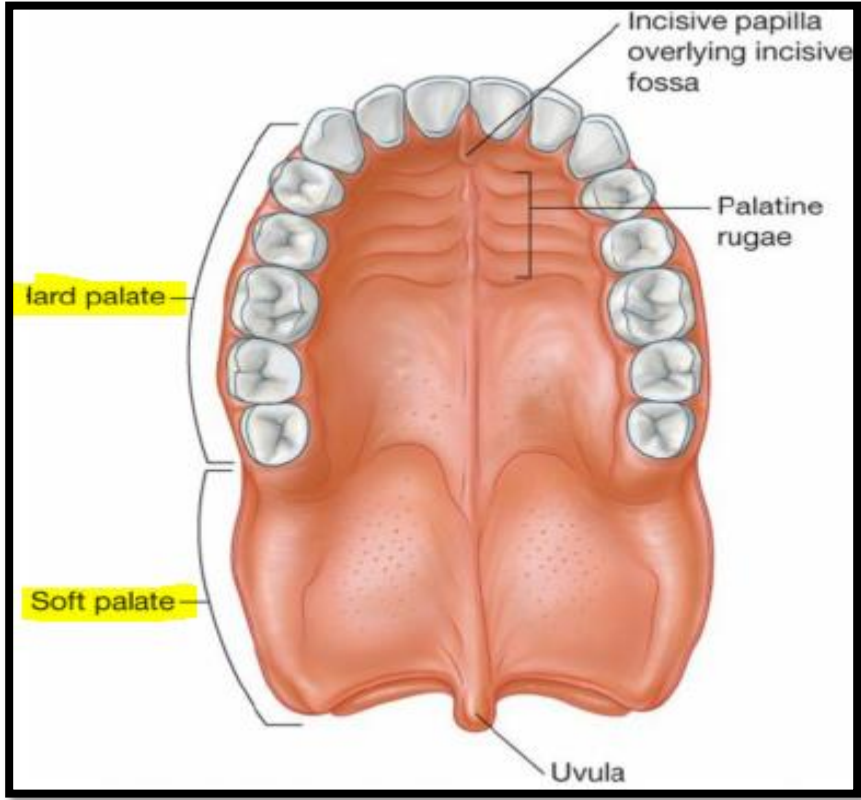
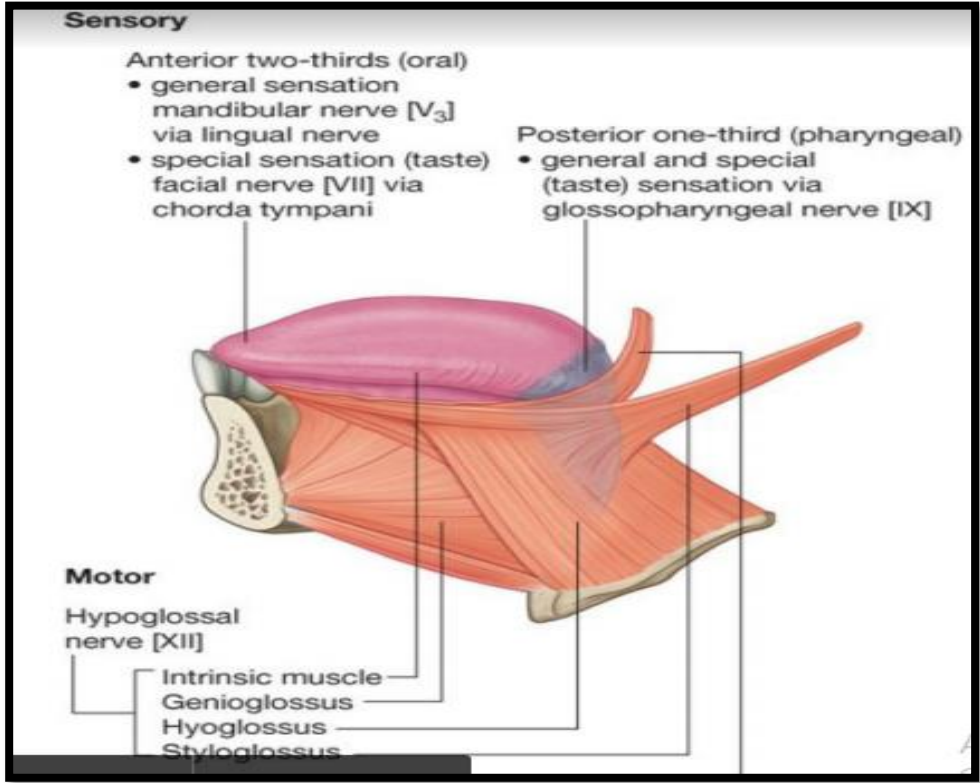


← **Triangular aperture**

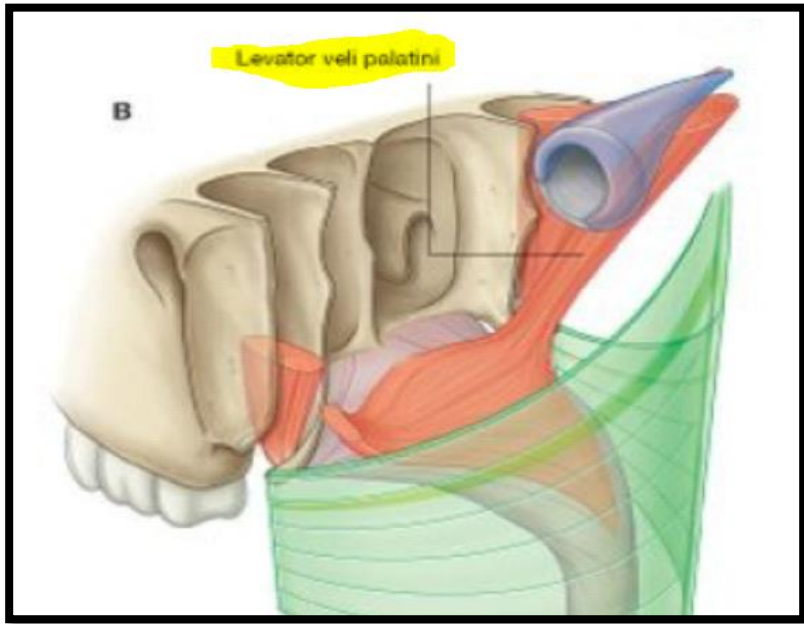


← **Lingual artery and veins**

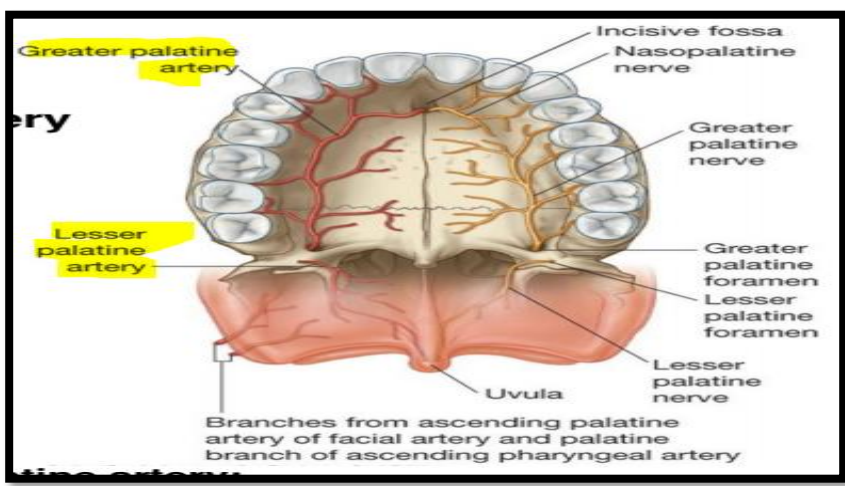
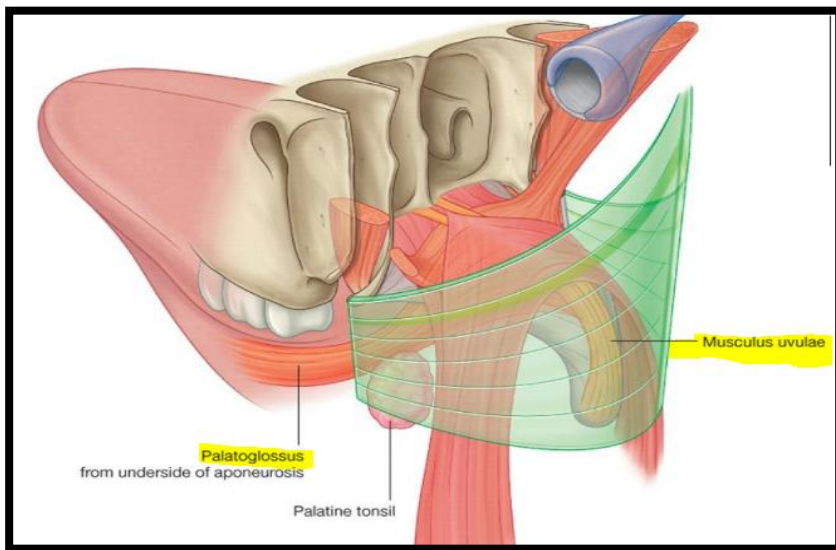








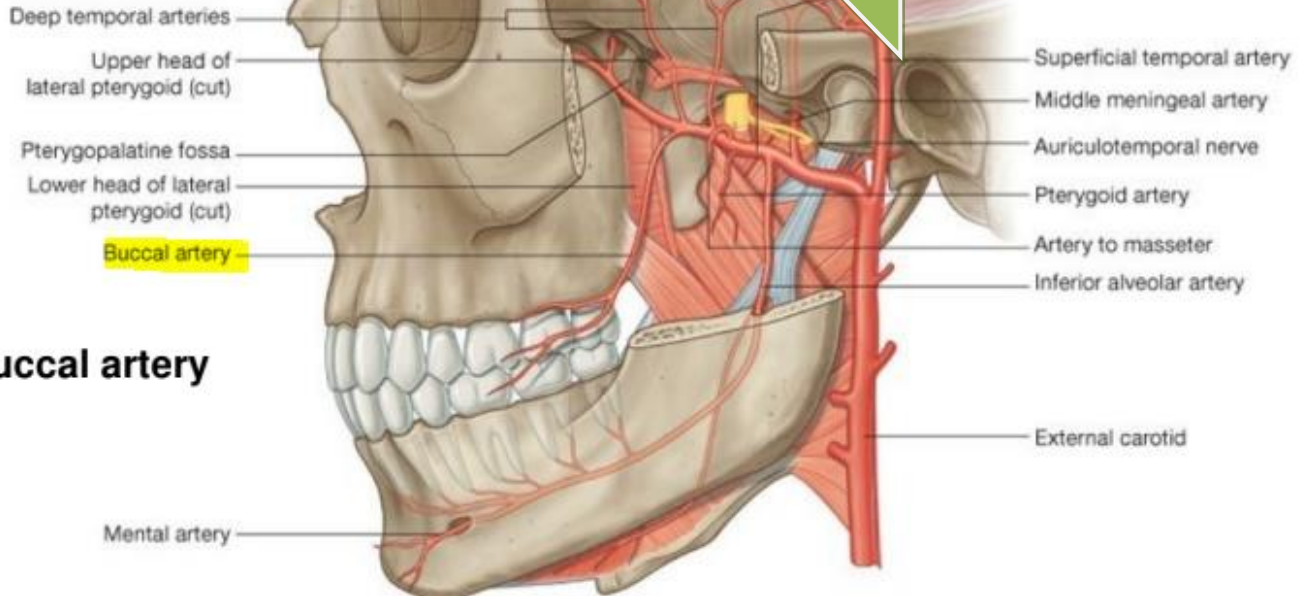
Muscles of soft palat



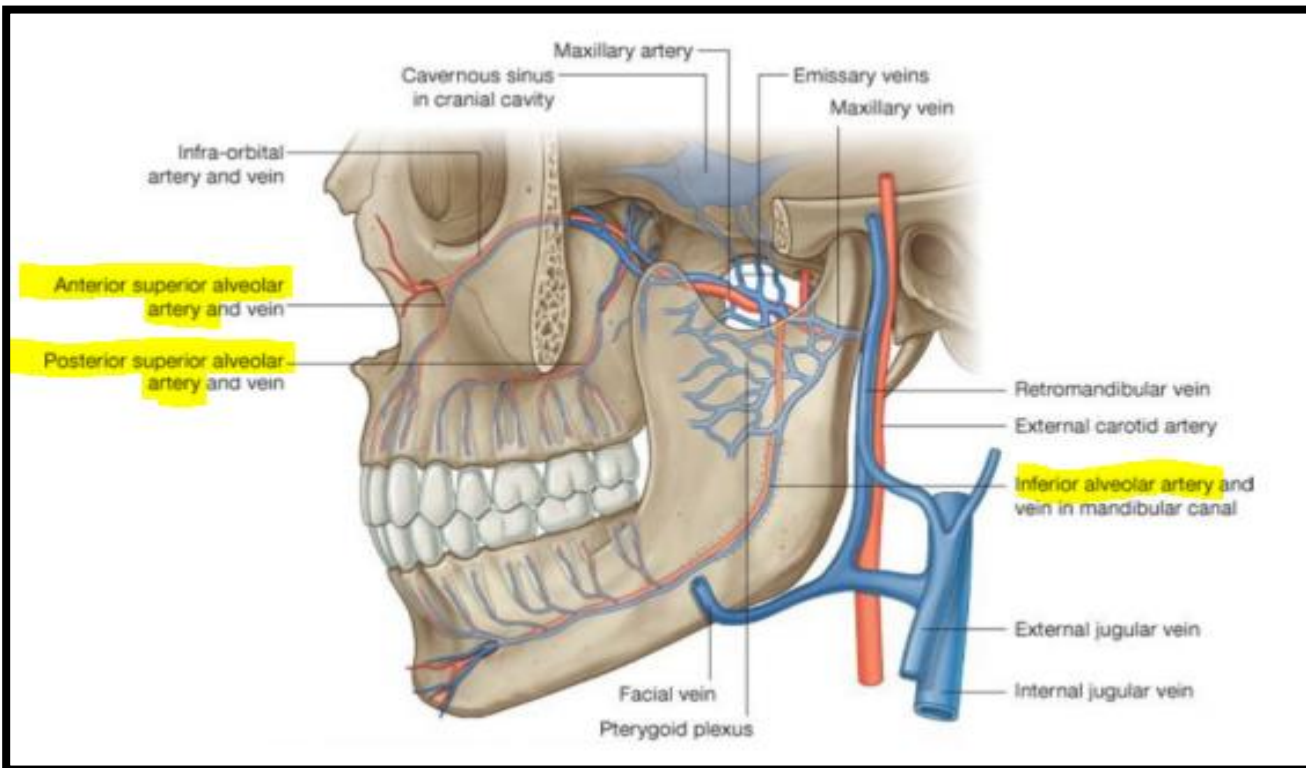
Blood supply of palate

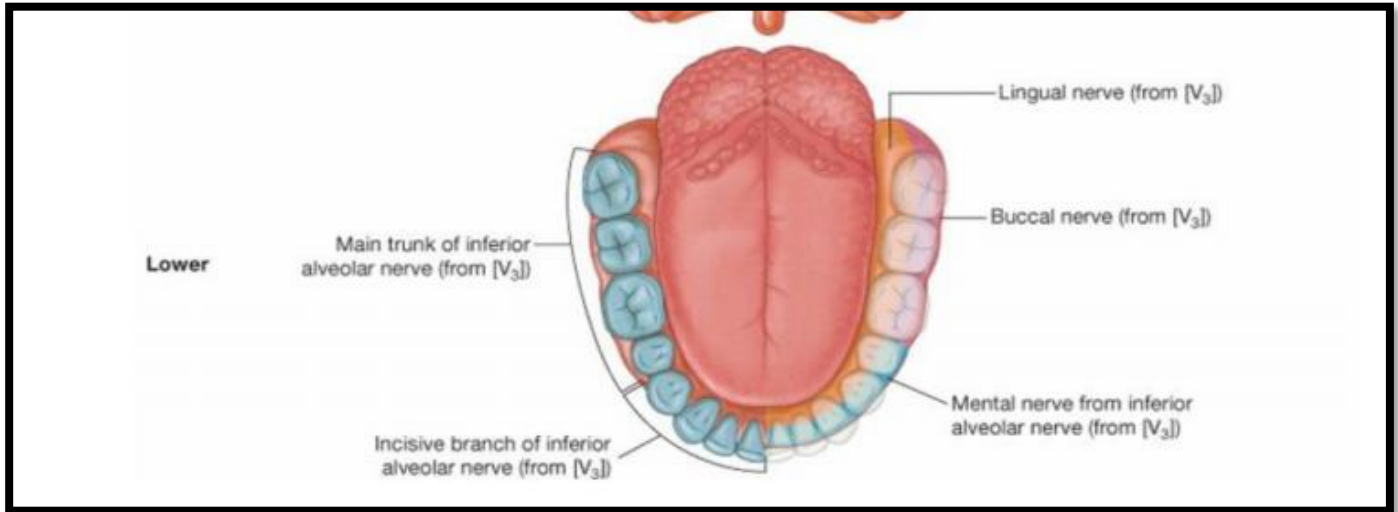
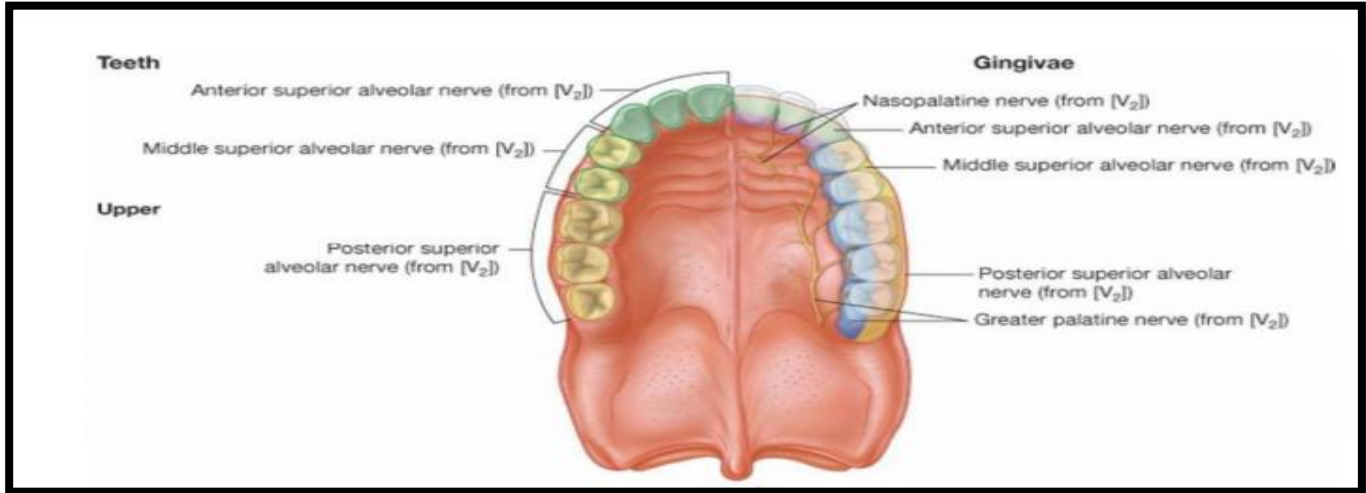
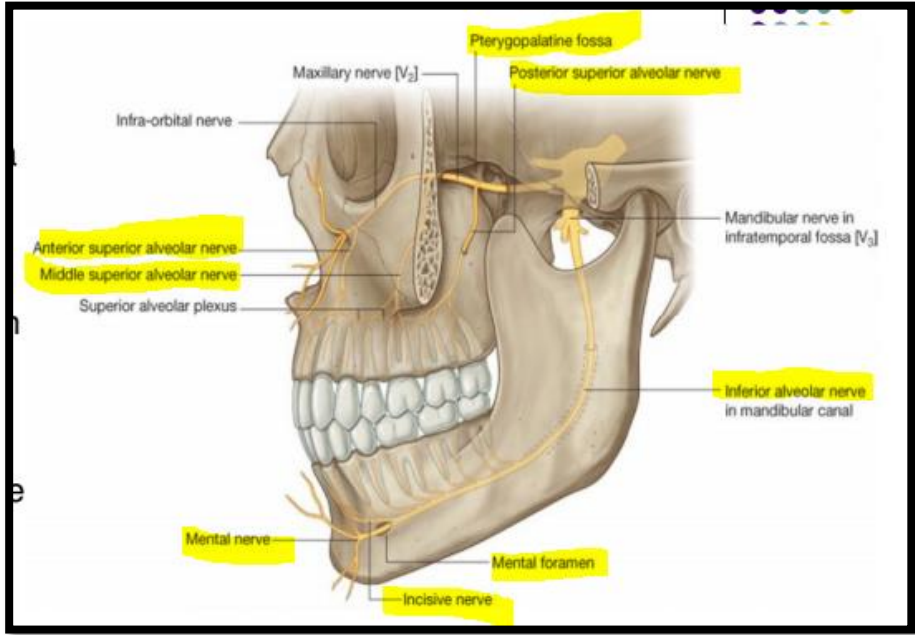
# Blood supply of Lateral wall of oral cavity

Blood supply of Lateral wall of oral cavity

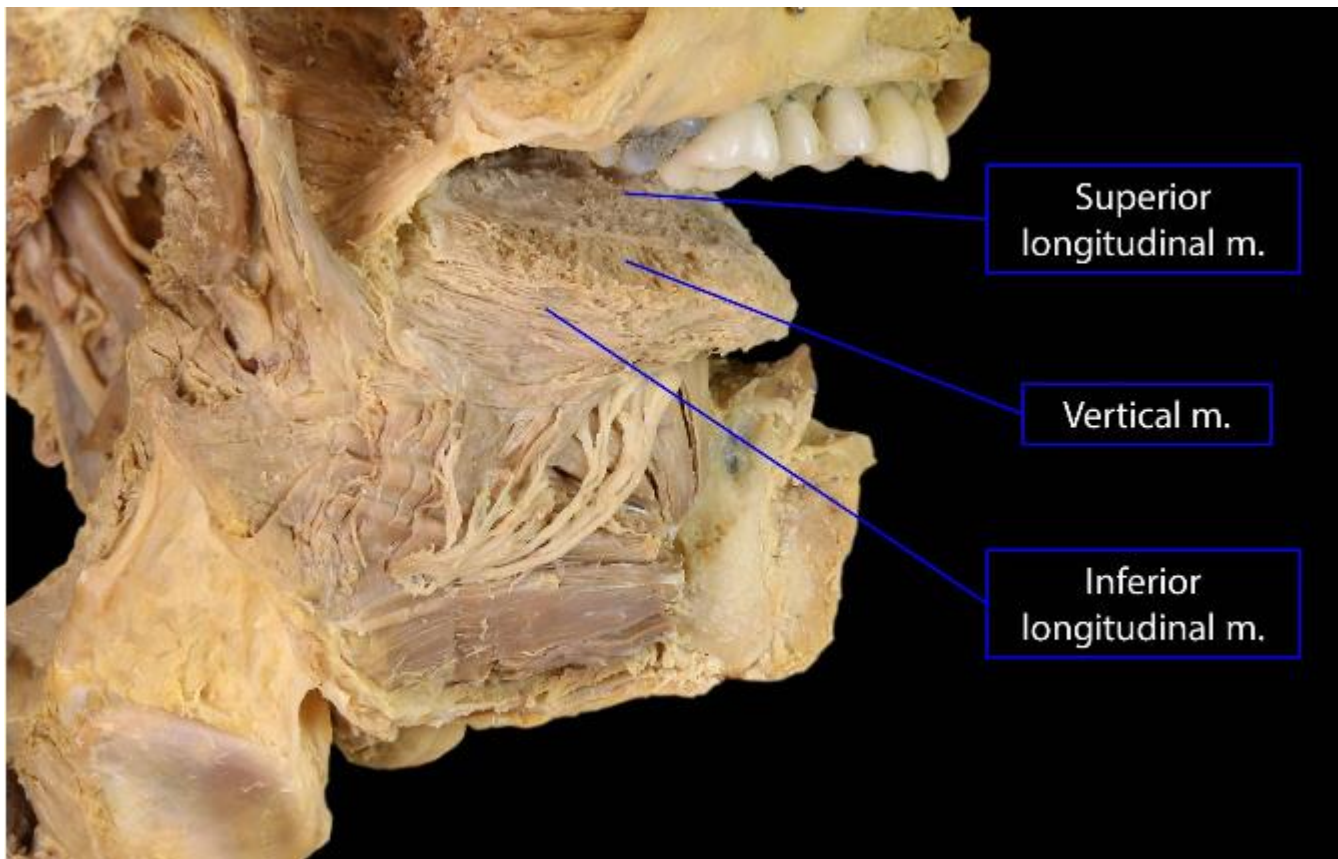
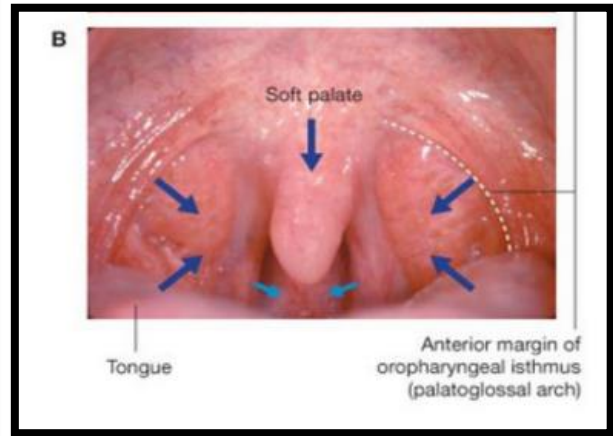
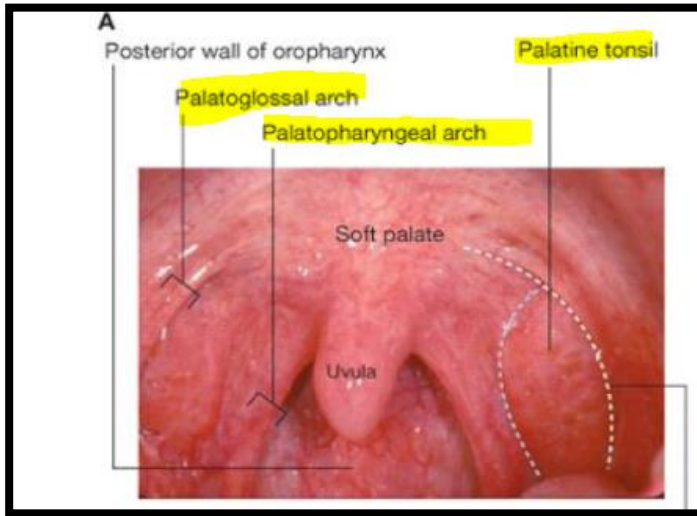


## Buccal artery









"يأت بها الله إن الله لطيف خبير"